



Enterprise Reporting Solution

Argos 5.4 Release Guide

Product version 5.4

Last updated 7/26/2017

Trademark, Publishing Statement, and Copyright Notice

© 1998-2017 Evisions, Inc. All rights reserved.

This software and related documentation are provided under a license agreement containing restrictions on use and disclosure and are protected by intellectual property laws. No part of this document may be reproduced, stored in or introduced into a retrieval system, or transmitted in any form or by any means (electronic, mechanical, photocopying, recording, or otherwise), or for any purpose, without the express written permission of Evisions, Inc.

The information contained herein is subject to change without notice and is not warranted to be error-free. Product features referenced herein for a period of time may not match product contents. Evisions, Inc. does not warrant that the functions contained in the software will meet your requirements or that the operation of the software will be uninterrupted or error free. Evisions, Inc. reserves the right to make changes and/or improvements in the software without notice at any time.

This software and documentation may provide access to or information on content, products, and services from third parties. Evisions, Inc. and its affiliates are not responsible for and expressly disclaim all warranties of any kind with respect to third-party content, products, and services. Evisions, Inc. and its affiliates will not be responsible for any loss, costs, or damages incurred due to your access to or use of third-party content, products, or services. Evisions, Inc. does not endorse the content or developer of any products or web sites mentioned.

All information in this guide is designed for instructional purposes only. Evisions, Inc. makes no guarantees regarding the accuracy or performance of any techniques used in this guide. Software configurations and environments may vary, and some techniques used in this guide may not operate efficiently under all configurations. This guide may contain examples of various technologies or products, which are the sole property and responsibility of their creators.

Trademarks are the property of the respective owners for any products mentioned herein.

Table of Contents

What's New in Argos 5.4?	4
MAPS and Argos Updates	4
Product versions	4
Installation	4
1. Prepare test environment and ensure current backup	4
2. Check for updates	5
3. Allow update process to complete	5
4. Verify the latest version is installed	5
DataBlock Designers	6
Running Schedules on Demand	6
Accessible Text and Labels for Dashboard Objects	7
Accessible Text	7
Labeled By	7
Other Considerations	8
PDF Options - Scheduled Reports	9
PDF Options - API	14
Argos 5.4 Release Notes	16
Getting Help	23

What's New in Argos 5.4?

Evisions is pleased to announce the release of Argos version 5.4, which includes the following changes:

Enhancements:

- Added a "Run Schedule Now" button to the list of actions available for schedules. Selecting this option will execute the schedule immediately, instead of at the next scheduled time.
- DataBlock designers can now specify alt text for dashboard objects and associate objects with text labels. These properties are read to screen reader users in the Web Viewer to improve the accessibility of the dashboard.
- When creating PDF reports via the API GET method, you can now include various PDF options in the report URL.
- When creating a schedule that generates PDF output, you now have access to the full range of PDF configuration options that were previously only available when saving a report manually.
- Added the GetExpr and ResetExpr functions to the expression builder for use in extract reports. Previously these functions were only available in banded reports.
- CSV and extract reports now have an option in the report configuration to append a blank line at the end of the report.

Resolved Issues:

- After upgrading to Argos 5.3, some users on Windows 10 and Surface Pro machines were encountering an access violation in module "combase.dll" when testing DataBlocks.
- When using a native database connection, attempting to use the SUM function within an extract report caused the report to fail with the error "Expected a numeric value on line 1 position 6".
- When printing a report, Argos was using the default color setting for the printer regardless of whether color or black and white printing was chosen in the print dialog.
- Additional enhancements and resolved issues.

We appreciate the feedback received from all of our users. Our products would not be what they are today without your continued support. If you have any comments or suggestions, please do not hesitate to [open a HelpDesk ticket](#) and let us know.

MAPS and Argos Updates

Some of the changes in this release require an update to MAPS as well as to Argos. We recommend upgrading both products to the latest versions concurrently.

[Product versions](#)

The latest versions of MAPS and Argos included in this release are:

- Argos mapplet 5.4.0.1529 / Argos client 5.4.0.1962 / Web Viewer 5.4.0.8
- MAPS service 5.4.0.1602 / MAPS Config 5.4.0.857 / eLauncher 5.4.0.5

Installation

[1. Prepare test environment and ensure current backup](#)

We highly recommend installing updates in a test environment before applying them to your production environment. You should make sure that a current backup is available in case of any unforeseen issues. To create a full backup of your MAPS environment, go to the **Server** ->

Backups screen in MAPS and click **Backup Now**.

[2. Check for updates](#)

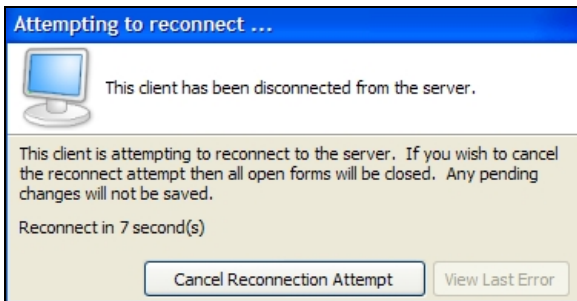
Click the **Check for Updates** button in the MAPS Configuration tool to view available updates.

If you are not already running Argos and MAPS 4.x, please refer to the [Argos 4.0 Release Guide](#) for instructions prior to proceeding with this upgrade.

It is possible to apply updates when users are on the system; however, to avoid the possibility of losing unsaved work we recommend applying updates during off hours.

[3. Allow update process to complete](#)

When applying updates to the MAPS service you will be temporarily disconnected from the server:



The update process may take a few minutes to complete. **Do NOT cancel the reconnection attempt or manually restart the server.** You will automatically be reconnected to the server once the update has been applied.

[4. Verify the latest version is installed](#)

To ensure that you are on the most current version, continue clicking the **Check for Updates** button and applying the updates until no new updates are available.

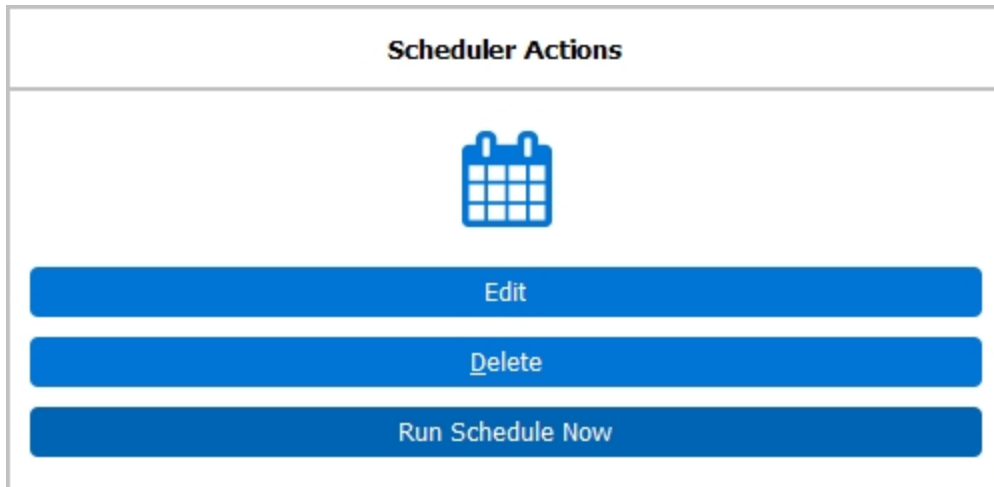
[Please Provide Us with Your Feedback!](#)

As always, we welcome any [feedback or suggestions](#) you may have. We very much appreciate your thoughts and suggestions, so please keep the great ideas coming!

DataBlock Designers

Running Schedules on Demand

Users who have permission to edit schedules now have the ability to run a schedule on demand from the Scheduler Actions card. Selecting the **Run Schedule Now** button executes the schedule immediately, as though its next scheduled date were the current time.



Note:

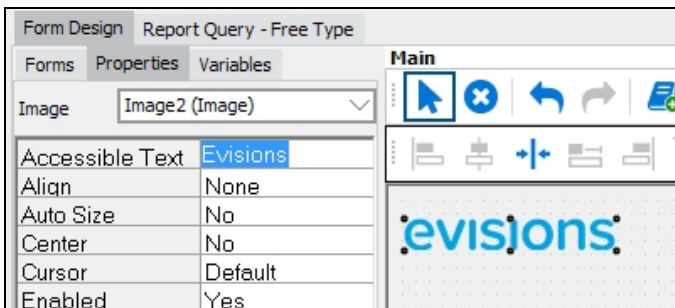
- The schedule will execute as your current user regardless of who created the schedule, unless there is a system-level override configured in MAPS.
- Running the schedule now has no effect on the next scheduled date of execution.
- Unlike the Test button in the Edit Schedule dialog, choosing Run Schedule Now does not populate the schedule name variable with "Test of <schedule name>".
- As with any active schedule, if the Email task is configured it's a good idea to make sure that it lists only the desired recipients before running the schedule.

Accessible Text and Labels for Dashboard Objects

When creating a dashboard form, DataBlock Designers now have two additional object properties that can be used to provide accessibility support for screen readers. These options are currently only supported in the Web Viewer, and do not have any effect when using a screen reader in the Argos client (may be added in a future release). As a best practice, you should always fill these fields out where they make sense to do so. This ensures the best possible experience for users who rely on assistive technology to navigate Argos.

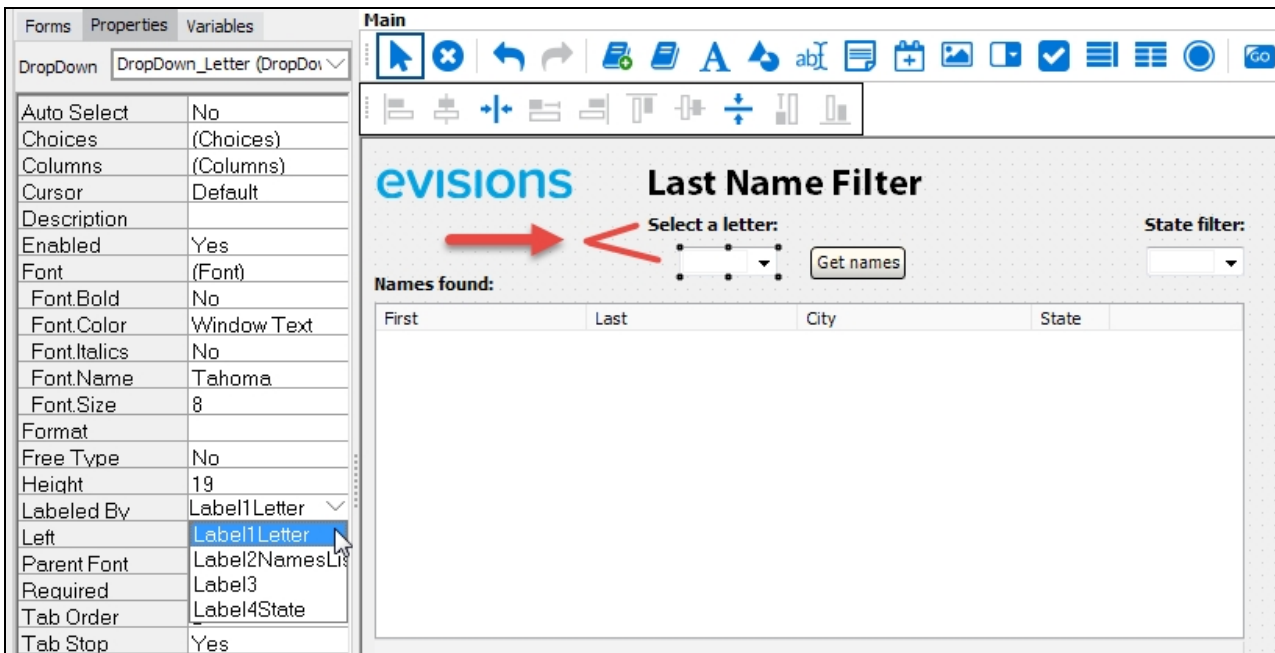
Accessible Text

The Accessible Text property can be used to provide a text alternative to objects that contain visual information, such as images, charts, OLAP cubes, and shapes. It also works with edit boxes and list/multi-column list boxes. When a screen reader user navigates the dashboard in the Web Viewer, this text is read to the user, helping them to identify the content if they are unable to see it.



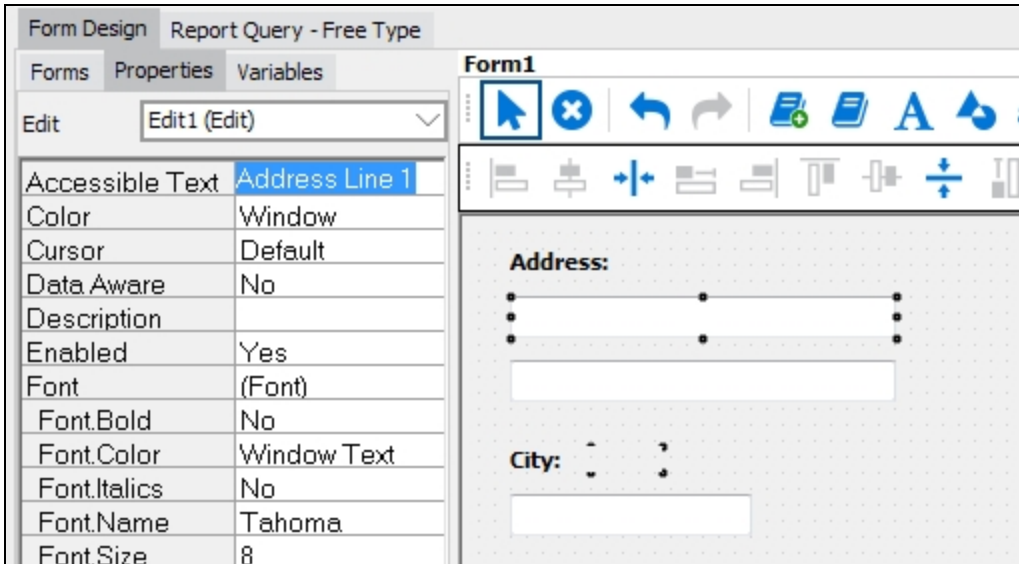
Labeled By

The Labeled By property is a drop-down field that allows you to choose an existing text object on the dashboard to assign as the label for this object. When using a screen reader in the Web Viewer, the selected text label will be read to the user when they navigate to the object. When designing a DataBlock with accessibility in mind, it is a best practice to assign labels for all form input fields, particularly edit boxes, date edits, and drop-down controls. This property can also be used with checkbox and radio button groups, list and multi-column list boxes (note: does not work with list boxes using JAWS/IE), and memo fields.



In the example above, the variable name of the label with text "Select a letter" label is `Label1Letter`. To associate it with the dropdown that the label is describing, select the dropdown field and then set the Labeled By property to the variable `Label1Letter`.

Note: Most edit boxes should use the Labeled By property to associate the edit box with its visible label. In the case of edit boxes that do not have a text label, or that require more specific information than the label includes in order to communicate something that is obvious visually, you can use Accessible Text to provide this. A good example is a set of two fields intended for entering different lines of an address. A sighted user can see that the "Address" text label belongs to both fields, but a screen reader user would benefit from having a label on each field since they are unable to see the grouping visually.



Other Considerations

When designing for accessibility, there are a few additional things to keep in mind when creating dashboard form fields:

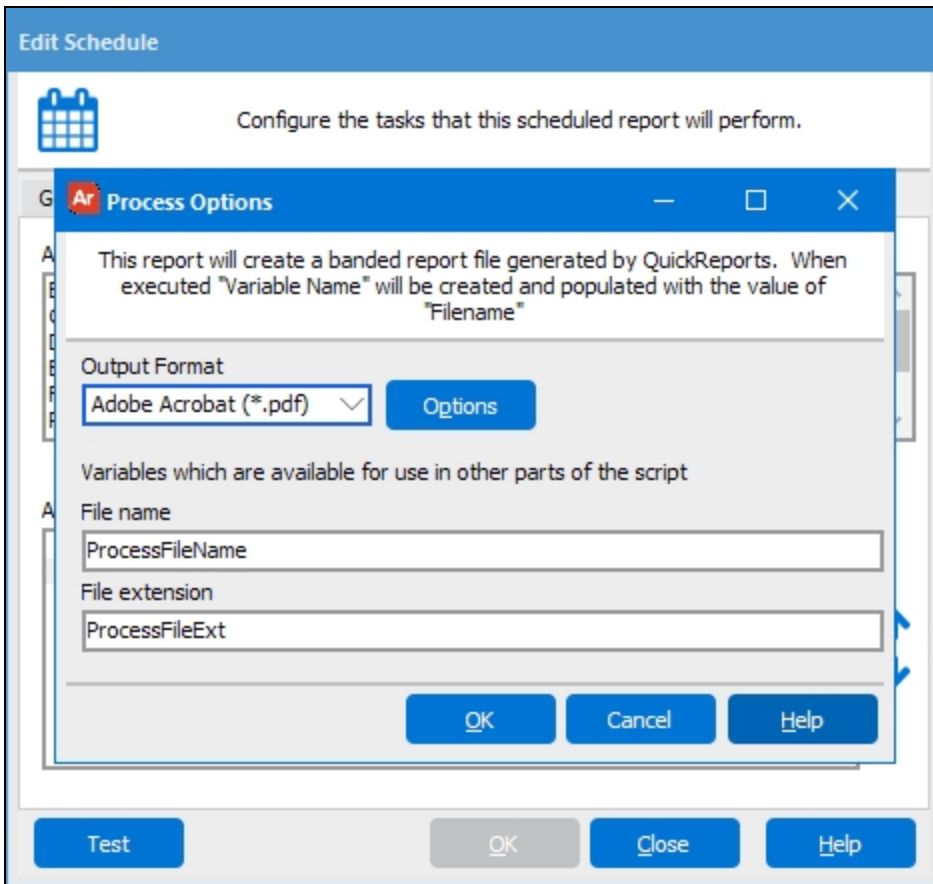
- The existing **Tab Stop** property should be set to Yes for objects that users should be able to get to using the keyboard, such as form fields, buttons, and hyperlinks.
- The **Tab Order** property controls the navigation order when using the keyboard to tab through dashboard objects. The tab order should ideally match the visual tab order on the screen, and should make sense to the user when hearing the fields in sequence. The default tab order is the order that fields were added to the dashboard, so you may need to adjust this as you add, remove, or reposition form elements.

We will be including additional accessibility-related enhancements in future releases of Argos. If you have any questions, comments, or feedback on these features or would like to see a specific feature added or prioritized, please [let us know](#).

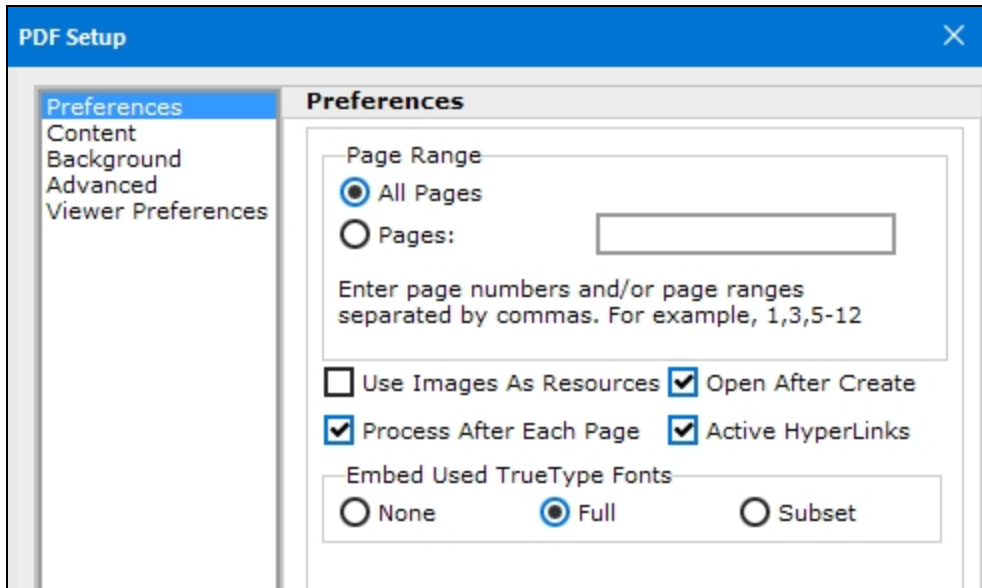
PDF Options - Scheduled Reports

When configuring a scheduled report to produce PDF output, you now have access to the full range of PDF options that were previously only available when saving a report manually.

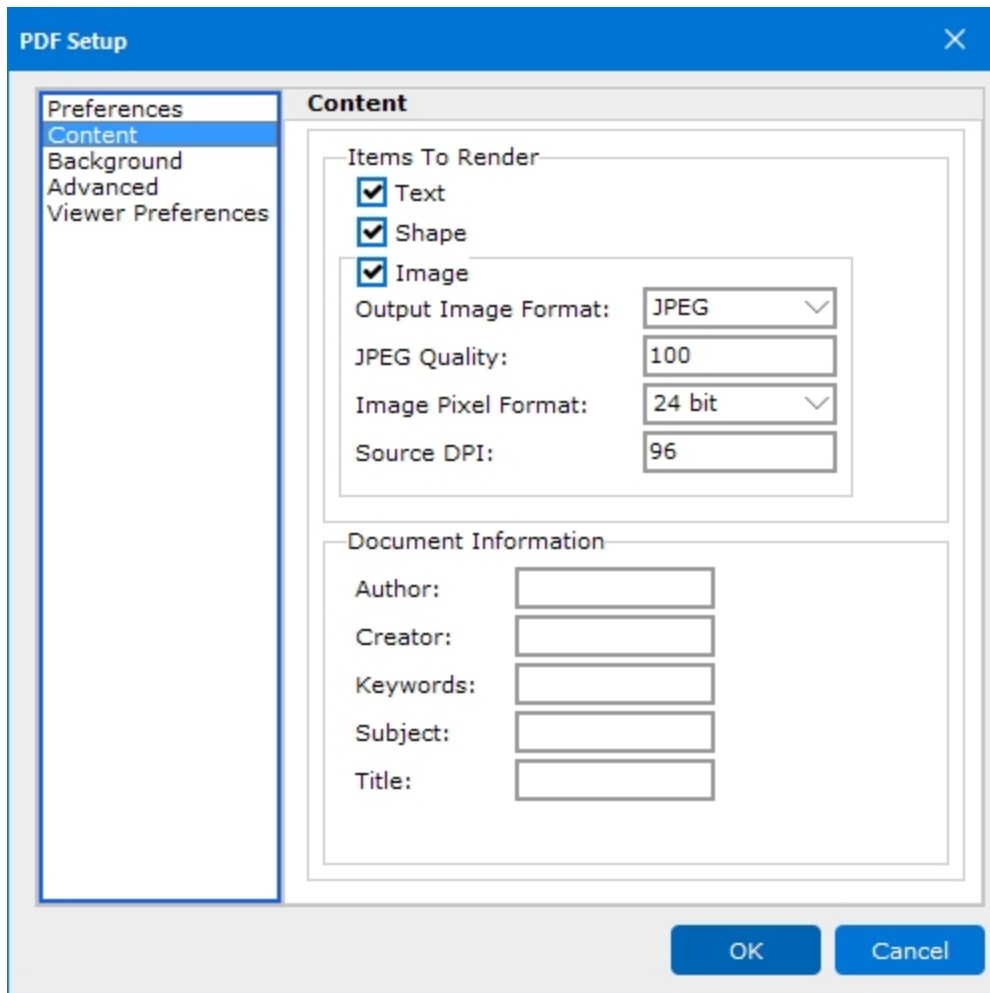
PDF options are configured as part of the **Process and Save** task:



After setting the **Output Format** to "Adobe Acrobat (*.pdf)", the **Options** button brings up the PDF Setup dialog, which has five sections of configuration options.

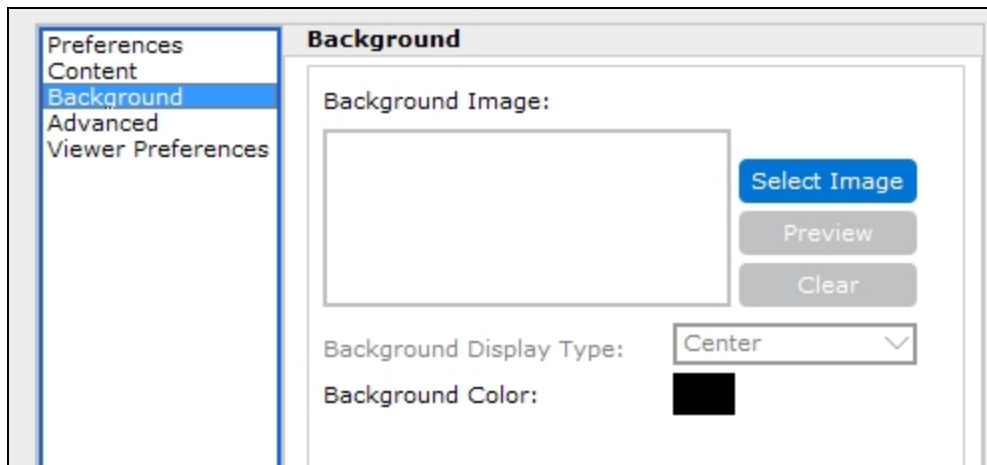


- **Page Range** - Specify which pages of the report should be included in the PDF. This option is not available for scheduled reports.
- **Use Images As Resources** - When checked, Argos does not process images until the end of the document, preventing duplicate copies of images from being stored in the PDF. This option has no effect when Process After Each Page is enabled.
- **Process After Each Page** - When checked, Argos performs page processing at the end of each page. This option is useful for conserving memory, especially with very long reports. If the box is unchecked, all pages are processed together when the end of the file is reached.
- **Open After Create** - When saving a PDF report manually, checking this box will cause the PDF to open immediately after saving the file. This option is not available for scheduled reports.
- **Active Hyperlinks** - When checked, hyperlinks in the document will be clickable.
- **Embed Used TrueType Fonts** - By default, Argos uses **Full** font embedding for TrueType fonts to ensure that the output looks the same on different machines. You can choose to change it to **Subset** embedding, which embeds only the specific characters used in the output, or **None** to use the fonts available on the local system. Turning off font embedding reduces the file size of the output. Embedding a font typically adds a few hundred kilobytes of information to each file, so you may wish to turn off embedding if you are generating a large number of small PDFs and have space concerns. Subset embedding uses less space than full embedding, but may limit the ability to edit the file's text later in some PDF editing applications.



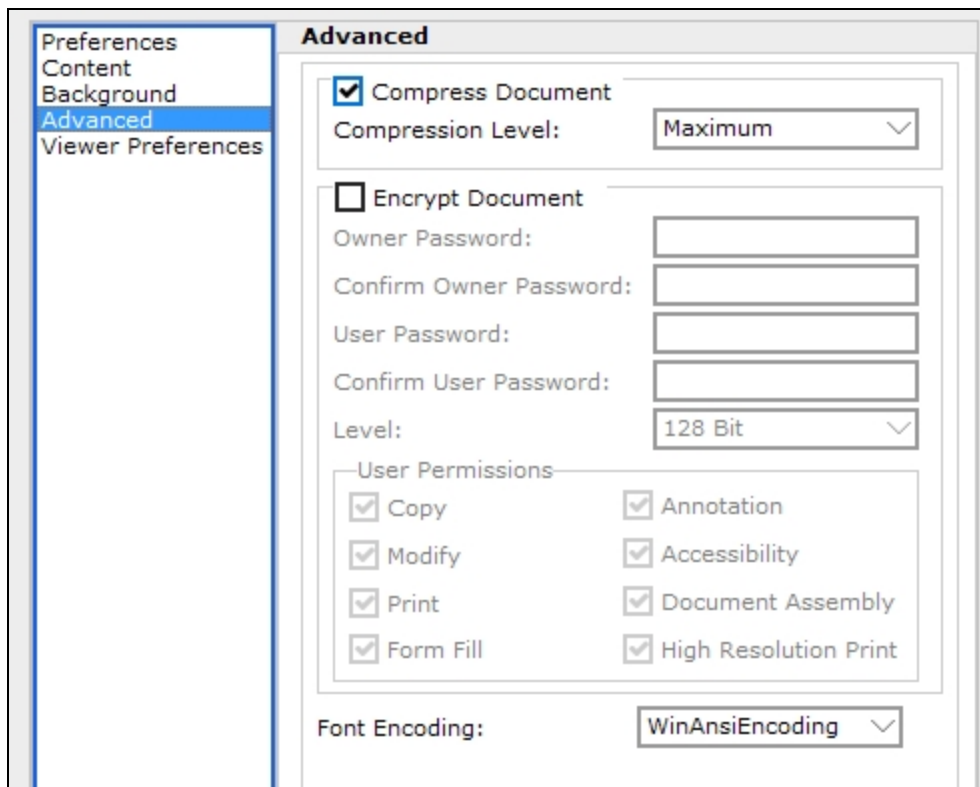
- **Items To Render** - Choose whether or not to include text, shapes, and images in the output. Uncheck the box to remove that item type from the output.
- **Output Image Format** - Choose from JPEG, BMP, GIF, CCITT3, or CCITT4. The default is JPEG.
- **JPEG Quality** - If the Output Image Format is JPEG, this option can be used to change the image quality. Values range from 0 to 100, with 100 being the default. Larger values result in better image quality, but also increased file size.
- **Image Pixel Format** - Controls the internal image and color depth of the image. Choose from Device, 1bit, 4bit, 8bit, 15bit, 16bit, 24bit (default), or 32bit.
- **Source DPI** - Specify the DPI value to be used when encoding images in the PDF. Higher DPI values will result in a larger file size. The default is 96.
- **Document Information** - Optional fields to specify the PDF's author, creator (creating application), keywords, subject, and title.
Note: Some PDF readers identify the "Creator" field as "Application". This field is typically used for the name of the application that generated the PDF.

Background



- **Background Image** - Use the **Select Image** button to browse for an image to be used as the background for the PDF. This feature can be used to include a watermark, logo, or other image in the output.
- **Background Display Type** - Choose a position for the image, or tile it over the entire background.
- **Background Color** - Choose a background color for the PDF document.

Advanced

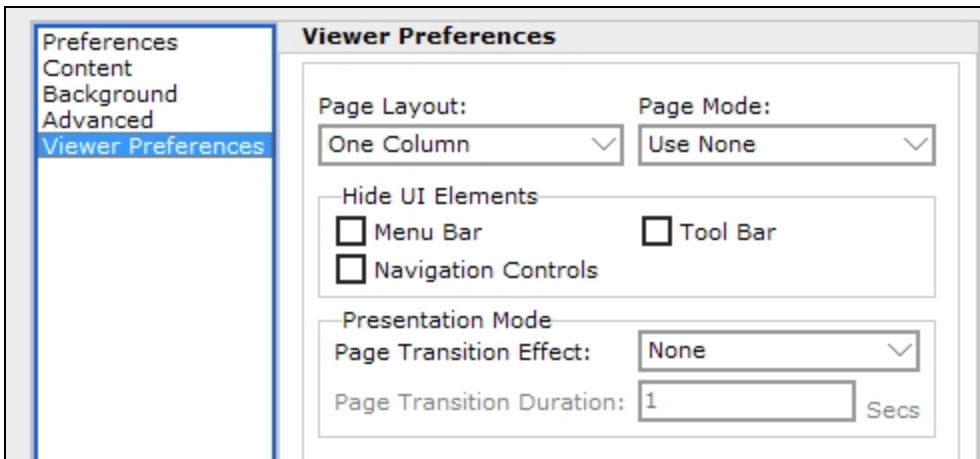


- **Compress Document** - Apply a PDF compression algorithm to reduce the file size. Choose from Maximum (default), Fastest, or Normal.

- **Encrypt Document** - Check this box to enable the PDF encryption options.
 - **Owner Password** - Specify a password that controls access to the permission settings for the PDF file. Click the ellipsis to use Argos variables or expressions to build the password.
 - **User Password** - Specify a password users must enter to open the PDF file. Click the ellipsis to use Argos variables or expressions to build the password.
 - **Level** - Choose a desired encryption strength (48 bit or 128 bit). Defaults to 128 bit.
 - **User Permissions** - Uncheck the relevant box(es) to deny users specific permissions for the PDF: copy, modify, print, form fill, annotation, accessibility, document assembly, and/or high resolution print.
- **Font Encoding** - Choose how the fonts should be encoded: WinAnsiEncoding (default), StandardEncoding, PDFDocEncoding, MacRomanEncoding, or MacExpertEncoding. If an incorrect encoding is selected, some characters may not display properly in the PDF.

Viewer Preferences

The Viewer Preferences screen contains options that specify how your PDF viewer should display the PDF upon opening it. These settings are intended for use with Acrobat Reader, but may also work in other PDF viewers. Note that these settings define the initial view; however, the user is free to change the display options in their PDF viewer.



- **Page Layout** - Determines how document pages are arranged (single page, one column, two columns with odd numbered pages on the left, two columns with odd numbered pages on the right). Defaults to One Column.
- **Page Mode** - Optionally display the document outline, thumbnail images, or display the document in full screen mode. The default is Use None (normal view).
- **Hide UI Elements** - Check the desired box(es) to hide the menu bar, tool bar, and/or navigation controls.
- **Presentation Mode** - Specify options that apply when the PDF is viewed in presentation mode:
 - **Page Transition Effect** - The visual [transition effect](#) that should be used in between pages.
 - **Page Transition Duration** - How long the effect should last, if one is selected.

PDF Options - API

When generating a PDF of a report via an [Argos API](#) call that uses the GET method, you now have the ability to specify a number of PDF options in the report URL. These options correspond to the PDF options that are available when saving a PDF report in the Argos client.

A typical API call includes the report unique identifier followed by any parameters needed to generate the report:

```
https://localhost/mrr?report=XPOUZHFMRTUT606MXV2UG66NX6VZPUTPT52WEVCYJYDVHQXUPXUJJRKOMPE6ZYUOULWAC7N5PGHE&Main_lb_AddrType.STVATYP_CODE=BU&Main_dd_entityInd.EntityCode=P
```

To specify PDF options, simply add an ampersand (&) followed by the option name and value for each option you wish to specify. For example:

```
https://localhost/mrr?report=XPOUZHFMRTUT606MXV2UG66NX6VZPUTPT52WEVCYJYDVHQXUPXUJJRKOMPE6ZYUOULWAC7N5PGHE&Main_lb_AddrType.STVATYP_CODE=BU&Main_dd_entityInd.EntityCode=P&PDF.EmbedFonts=None&PDF.Encryption.UserPassword=12345&PDF.Author=Evisions&PDF.Title=My Document Title
```

Similarly, when using POST, you can specify PDF options as additional parameters using the <input> tag:

```
<form method=post action="https://mapstestkit01/mrr">
  <input type="hidden" name="report"
value="SH6QCJUWS2ALZR63XC43UH4GK7LGVAI5BRGWSGARXSOXEXVFMJBNICZNN274JPKHRB7IVRVJQMEXC">
  <input type="hidden" name="REPORTFORMAT" value="PDF">
  <input type="hidden" name="PDF.EmbedFonts" value="None">
  <input type="hidden" name="PDF.Encryption.UserPassword" value="12345">
  <input type="hidden" name="PDF.Author" value="Evisions">
  <input type="hidden" name="PDF.Title" value="My Document Title">
  <input type="submit" value="Click Here to Run Report">
</form>
```

The table below lists all of the available PDF options, followed by their possible values. If you do not specifically include an option in the URL, it will use the value marked as its **(default)**.

PDF Option	Available Values
PDF.UseImagesAsResources	True, False (default)
PDF.ProcessAfterEachPage	True (default), False
PDF.ActiveHyperlinks	True (default), False
PDF.EmbedFonts	Full (default), None, Subset
PDF.Text	True (default), False
PDF.Shape	True (default), False
PDF.Image	True (default), False
PDF.Image.OutputImageFormat	BMP, JPEG (default), CCITT3, CCITT4
PDF.JPEGQuality	Integer, defaults to 100
PDF.Image.ImagePixelFormat	Device, 1bit, 4bit, 8bit, 15bit, 16bit, 24bit (default), 32bit
PDF.Image.SourceDPI	Integer, defaults to 96
PDF.Author	String, defaults to null
PDF.Creator	String, defaults to null . In Acrobat, the "Creator" property is displayed as "Application".
PDF.Keywords	String, defaults to null

PDF Option	Available Values
PDF.Subject	String, defaults to null
PDF.Title	String, defaults to null
PDF.BackgroundColor	<ul style="list-style-type: none"> ■ Hex value in RRGGBB format (e.g., FF0000) ■ Hex value in BBGGRR format with the addition of the prefix "0x" (e.g., 0x0000FF) ■ Any of the named colors supported in Argos: Black, Maroon, Green, Olive, Navy, Purple, Teal, Gray, Silver, Red, Lime, Yellow, Blue, Fuchsia, Aqua, White, MoneyGreen, SkyBlue, Cream, MedGray, ActiveBorder, ActiveCaption, AppWorkSpace, Background, BtnFace, BtnHighlight, clBtnShadow, BtnText, CaptionText, Default, GradientActiveCaption, GradientInactiveCaption, GrayText, Highlight, HighlightText, HotLight, InactiveBorder, InactiveCaption, InactiveCaptionText, InfoBk, InfoText, Menu, MenuBar, MenuHighlight, MenuText, None, ScrollBar, 3DDkShadow, 3DLight, Window, WindowFrame, WindowText
PDF.Compression	True (default), False
PDF.Compression.CompressionLevel	Maximum (default), Fastest, Normal
PDF.Encryption	True, False (default)
PDF.Encryption.UserPassword	String, defaults to null (no password)
PDF.Encryption.OwnerPassword	String, defaults to null (no password)
PDF.Encryption.AllowCopy	True (default), False
PDF.Encryption.AllowModify	True (default), False
PDF.Encryption.AllowPrint	True (default), False
PDF.Encryption.AllowFillForm	True (default), False
PDF.Encryption.AllowAnnotation	True (default), False
PDF.Encryption.AllowDocumentAssembly	True (default), False
PDF.Encryption.AllowHighResolutionPrint	True (default), False
PDF.Encryption.AllowAccessibility	True (default), False
PDF.FontEncoding	WinAnsiEncoding (default), StandardEncoding, PDFDocEncoding, MacRomanEncoding, MacExpertEncoding
PDF.PageLayout	OneColumn (default), SinglePage, TwoColumnLeft, TwoColumnRight
PDF.PageMode	UseNone (default), FullScreen, UseOutlines, UseThumbs
PDF.HideMenuBar	True, False (default)
PDF.HideNavigationControls	True, False (default)
PDF.HideToolBar	True, False (default)
PDF.PageTransitionEffect	None (default), BlindsHorizontal, BlindsVertical, BoxInward, BoxOutward, Dissolve, GlitterLeftToRight, GlitterTopLeftToBottomRight, GlitterTopToBottom, SplitHorizontalInward, SplitHorizontalOutward, SplitVerticalInward, SplitVerticalOutward, WipeBottomToTop, WipeLeftToRight, WipeRightToLeft, WipeTopToBottom
PDF.PageTransitionDuration	Integer, defaults to 1 second

Argos 5.4 Release Notes

Argos Mapplet 5.4.0.1529 / Argos Client 5.4.0.1962 / Web Viewer 5.4.0.8
MAPS Service 5.4.0.1602 / MAPS Config 5.4.0.857 / eLauncher 5.4.0.5

Argos

Enhancements

Area	Description	Issue number
API	When generating a PDF of a report via an API call using the GET/POST methods, you now have the option to append parameters specifying various PDF options similar to the PDF options available when saving a report in the Argos client.	AR-574
Accessibility	In the banded report editor, you can now open the right-click context menu using the keyboard's Menu key (if present) or Shift-F10.	AR-4919
Accessibility	Added a "Labeled By" property to dashboard form objects that allows DataBlock Designers to associate objects with an existing text label on the dashboard. Filling out this field can make your DataBlocks easier to navigate for users of assistive technology (such as screen reading software) who are using the dashboard in the Web Viewer.	AR-4423
Accessibility	The Create Shortcut, Share, and Details buttons in the Explorer, and the Details, Locate, Edit, and Remove buttons on the Shortcuts tab are now accessible using the keyboard and have been given descriptive alt text.	AR-2243
Accessibility	Added an "Accessible Text" property to certain dashboard form objects that may require additional information for users of assistive technology (such as screen reading software). DataBlock Designers can use this property to add alt text that describes images, charts, OLAP cubes, shapes, edit boxes, and list/multi-column list boxes. When navigating the dashboard in the Web Viewer, this text is read to the user, helping them to identify the content if they are unable to see it.	AR-2232
Banded reports	Objects on banded reports now have an option to "Repeat on new page". When checked, this property causes the object to reprint on any additional pages that are created due to other objects that may stretch the band onto a new page.	AR-4334
Charting	When downloading a chart image from the Web Viewer, the downloaded image now uses the same fonts and background color as the original chart.	AR-4899
Dashboards	You can now specify a background color for scroll boxes. Previously, scroll boxes always took on the color of their parent object.	AR-4471
DataBlocks	When exporting the object contents of a DataBlock, you can now choose to retain the original formatting of SQL queries instead of converting them to string format.	AR-3503
Expression parser	Added two new functions (EncodeURI and EncodeURIComponent) to the expression builder that allow you to encode URLs and URL fragments that may include special characters. One example use scenario would be to encode URL parameters in a hyperlink on a dashboard, or for any other situations where you need to safely encode special characters within a URL.	AR-4941

Area	Description	Issue number
Extract reports	Added the GetExpr and ResetExpr functions to the expression builder for use in extract reports. Previously these functions were only available in banded reports. The functions can be used to retrieve or reset the value of a named expression.	AR-2472
Help	When opening the help from within Argos or the Argos Web Viewer, you will now always be taken to the latest version of the help regardless of your installed Argos version.	AR-4606
Help	Added Help buttons to the dialogs for editing various schedule tasks that link to the appropriate sections of the online help.	AR-3283
OLAP	When looking at a saved setting for an OLAP cube, the name and description of the saved setting are now shown at the top of the cube.	AR-1693
OLAP	When configuring OLAP cube dimensions in the wizard, you can now sort the lists of available, column, and row dimensions alphabetically by right-clicking within the list and selecting Sort(a-z).	AR-1652
Queries	Added the ability to find/replace text within free type queries using the keyboard shortcut Ctrl-H.	AR-3313
Reports	When overriding the main report query sort in the Edit Report dialog, you can now drag and drop fields to move them into the list or to reorder them. Similarly, you can now drag and drop fields into the text box on the Filters tab.	AR-3229
Reports	CSV and extract reports now have an option in the report configuration to append a blank line at the end of the report. This was the default behavior in previous versions of Argos, so the option will be checked automatically for all existing reports. For new reports, it defaults to unchecked.	AR-3528
Scheduling	Added a "Run Schedule Now" button to the list of actions available for schedules. Selecting this option will execute the schedule immediately, instead of at the next scheduled time. Choosing this option will not affect the next scheduled date.	AR-4850
Scheduling	When creating a schedule that generates PDF output, you now have access to the full range of PDF configuration options that were previously only available when saving a report manually.	AR-755
User interface	The plus button in the icon used to add objects to the Library of Objects is now green to help distinguish it from the icon used to insert objects from the Library of Objects. The tooltip wording has also been improved.	AR-4371
User roles	For custom Report Viewer roles that also have the Edit Schedule permission configured in MAPS, the user now only requires Create/Modify Children permission on the report in order to edit its schedules. Previously, the Edit Schedule permission was required.	AR-4995
Web Viewer	In the Web Viewer, when a column in a multi-column list box is too small to display the full value, the full value is now displayed in hover text.	AR-3418

Resolved Issues

Area	Description	Issue number
API	When making an Argos API call via an OnClick event in the Web Viewer, only the first line of any memo box parameters was being passed over to Argos. As part of the resolution for this issue, two new URI encoding functions have been added to the expression parser in Argos (see release note for AR-4941), which should be used when constructing OnClick URLs that may contain special characters such as the newline character required in this instance.	AR-4884
Accessibility	In the OLAP cube wizard, pressing Shift-Tab to navigate to previous fields did not allow users to navigate to the Available Fields/Measures sections using the keyboard.	AR-5014
Authentication	In Argos 5.3.x, users were unable to log in to Argos on MAPS servers where the regional settings were configured to use a comma as the decimal symbol. The error message seen by users was "Error initializing the scheduler: near ",": syntax error".	AR-4986
Banded reports	When viewing a banded report that was designed at 120 DPI on a system at 96 DPI, some objects were incorrectly shifting position on the generated report.	AR-4788
Banded reports	Attempting to insert an item from the Library of Objects into a banded report in Argos version 5.2 and higher resulted in an access violation error.	AR-4596
Charting	In the Web Viewer, when a chart contained both a "sides" bar series and a line series, the line series was appearing shifted slightly to the right.	AR-4973
Charting	When downloading a chart image from the Web Viewer, the legend was always shown in the upper right regardless of the actual legend position.	AR-4898
Charting	In the Argos client, charts containing multiple series of different types (for example, line charts and bar charts) caused the legend to display incorrect colors for subsequent series.	AR-4824
Charting	Legend titles using the default font options for standard charts were appearing partially cut off in the Web Viewer.	AR-4823
Charting	Setting the legend of a standard chart to invisible resulted in the vertical and horizontal axes being shifted too far left and down, respectively.	AR-4984
Charting	Standard charts in the Web Viewer were ignoring any font options specified in the Argos client for the axis and legend titles.	AR-4760
Dashboards	Viewing a dashboard that contained multiple panels with their alignment set to a relative position such as Top, Bottom, Left, or Right on a system that had a DPI different to the DPI the dashboard was designed in resulted in the panels shifting to different locations.	AR-4792
Dashboards	In the Web Viewer, pressing Ctrl-A while focus was inside a multi-column list box selected all content outside of the list box as well as content within it.	AR-3555
Data connections	When using a native database connection, attempting to use numbers stored in string format as part of a SUM function within an extract report caused the report to fail with the error "Expected a numeric value on line 1 position 6".	AR-4329
Explorer Tree	After attempting to delete a DataBlock or report while another user was editing it and receiving a "Could not get write lock" message, even after the user closed the object it was still showing as locked unless you attempted to delete some other object in Argos and then went back to delete the first object.	AR-4918

Area	Description	Issue number
Explorer Tree	Cutting an item in the explorer tree and then immediately copying and pasting it resulted in the object being moved rather than copied.	AR-4875
Extract reports	In fixed-width extract reports, setting a field's width to '0' was causing the field to be omitted from the report, rather than acting as a variable-width field as it should have.	AR-4966
Extract reports	In fixed-width extract reports, copying and pasting a field of width 0 (variable width) incorrectly resulted in the pasted field having a width equal to the default width set in the report options.	AR-4975
Extract reports	In extract reports, if a field was set to a maximum width that was less than the combined lengths of its prefix and postfix, the specified width was ignored.	AR-4959
Extract reports	Extract reports that had more than one data set were taking significantly longer to run then they did in Argos 5.0 and earlier.	AR-4485
Extract reports	Attempting to burst a scheduled extract report that used a dataset was resulting in an error indicating that variables in the master dataset (ArgosData) did not exist.	AR-2885
Library of Objects	After inserting an object from the Library of Objects into a banded report, the object did not receive focus, making it difficult to manipulate using the keyboard.	AR-4928
Localization	Attempting to run or edit a banded report that had dataset containing a special character in its name was resulting in the error "Invalid starting position (0) for object".	AR-3786
OLAP	The OLAP measure calculation methods 1st Quartile, Median, 3rd Quartile, InterQuartile, Quartile Deviation, and Coeff(icient of) Quartile Variance were returning incorrect results.	AR-4943
Printing	When printing a report, Argos was using the default color setting for the printer regardless of whether color or black and white printing was chosen in the print dialog.	AR-3526
Queries	Manually removing a table alias for an Oracle query that was created in the Visual Designer caused the query to fail with the error "ORA-00904: invalid identifier" due to Argos wrapping the table names in either quotes or brackets.	AR-4417
Reports	The values of manual sub-variables were not being passed to the report when running it in the Web Viewer.	AR-5005
Stability	After upgrading to Argos 5.3, some users on Windows 10 and Surface Pro machines were encountering an access violation in module "combase.dll" when testing DataBlocks. This issue was caused by a recent accessibility improvement to text edit boxes in some locations, which has been temporarily reverted until it can be implemented without breaking Argos.	AR-4913
Stability	Attempting to cut and then paste a DataBlock into the same folder resulted in an access violation.	AR-3469
Standard Charts	For smaller pie charts that have the legend located on top, the legend was overlapping labels shown near the top of the chart.	AR-4827
System variables	The system variable \$\$Schedule.Note was not populating with data when testing the Email task in a schedule.	AR-4835
System variables	The system variable \$Report.GUID was not populating with data when used in an email sent from a schedule that failed due to timeout.	AR-4833
System variables	DataBlock system variables were incorrectly refreshing when switching to a different dashboard form via a button click in the Web Viewer.	AR-4786

Area	Description	Issue number
User interface	In the Manage Saved Settings dialog, the checkbox to share a saved setting with other users was showing as active when no saved setting was selected.	AR-4620
User interface	After cutting a folder or DataBlock in the Explorer Tree, clicking Refresh, and then pasting, Argos attempted to move a different object than the one that had been cut.	AR-4855
Visual Designer	Updated the icons used for the different types of unions in the visual designer and corrected the description of the MINUS union, which was not accurate.	AR-5001
Web Viewer	Attempting to change the chart type of an OLAP chart in the Web Viewer was resulting in an error.	AR-5025
Web Viewer	Buttons and hyperlinks that used a variable as part of the file path in a "fetch file" on-click event were generating an invalid path when attempting to download the file in the Web Viewer.	AR-4880
Web Viewer	When a "fetch file" on-click event failed due to an error, the Web Viewer was opening a blank page instead of displaying an appropriate error message.	AR-4701

Enhancements

Area	Description	Issue number
Applications	Removed Windows XP from the list of supported operating systems. The MAPS applications currently run on Windows XP; however, any users who are still on this operating system should be aware that Microsoft's extended support period ended on April 8th, 2014 and we may therefore be unable to resolve issues with running our software on Windows XP should they occur in the future.	MAPS-1348
Applications	Removed Windows Vista from the list of supported operating systems. The MAPS applications currently run on Windows Vista; however, any users who are still on this operating system should be aware that Microsoft's extended support period ended on April 11th, 2017 and we may therefore be unable to resolve issues with running our software on Windows Vista should they occur in the future.	MAPS-1363
Diagnostics	When performing a functional or automatic backup, MAPS now stores a copy of the diagnostic information in a server_diagnostics.txt file in the backup directory.	MAPS-948
Email	Removed the character limit for the "To:" field when sending emails. Previously, only 128 characters were allowed for the email address(es).	MAPS-1460
Email	When an email is stuck in the MAPS queue due to a transmission error, you can now edit an invalid email address so the email can be resent.	MAPS-1050
HTTP/HTTPS	Improved the process for binding the ports used for HTTP, HTTPS, and TCP to reduce issues if the ports are not released in a timely manner after the nightly restart. Instead of failing after 5 attempts several seconds apart, MAPS now waits 60 seconds before attempting to bind the port again, and continues until success. If the port is unavailable, MAPS now adds useful debugging information to the log file.	MAPS-1490
Help	The "What's New" link in the eLauncher now always opens the latest version of the page regardless of the version of the eLauncher you are running.	MAPS-1458
Help	When opening the help from within MAPS, you will now always be taken to the latest version of the help regardless of your installed MAPS version.	MAPS-1375
LDAP	When configuring an LDAP server, you can now edit the default user search class of "objectClass=user". This provides better support for authentication sources that use object classes other than the default. Previously, using such a server required adding all users to MAPS individually.	MAPS-453
Scheduling	When editing a schedule, the dialog now indicates if the "Run schedule as this user" field is being overridden by a system-level Run As user on the Scheduling -> Configuration screen.	MAPS-1330
User interface	Added search boxes to the Users, LDAP Resource Users, Groups, Data Connections, and Schedules screens to allow you to find items more easily.	MAPS-1077

Resolved Issues

Area	Description	Issue number
Data connections	Selecting the entire contents of a multi-column list box was taking significantly longer when using a native database connection than it did when using an ADO connection.	MAPS-1472
LDAP	When using an LDAP server that did not have the "objectClass=user" user search class, users were unable to log in after the upgrade to MAPS 5.0 even when they had been added to MAPS as individual users. This issue was resolved as part of the enhancement to support custom object classes (MAPS-453).	MAPS-1409
Scheduling	After clicking the Refresh button at the top of the Scheduling screen in MAPS Config and then editing any schedule, the Maximum Timeout field in the schedule was displaying as "Use default" regardless of the actual value. This was a display issue only; the value in the database was not changed.	MAPS-1376
Security	When changing the password on the Driver Properties screen of a data connection, the old and new passwords were being logged in the auditing tables in the MAPS and Data Warehouse databases. The auditing records now just state that the password was changed.	MAPS-1475

Getting Help

For information on using the software, please refer to the in-product Help, which contains detailed information on all aspects of the product.

If you are having problems with the installation or configuration, you can search our knowledge base of common issues and their resolutions at <http://helpdesk.evisions.com>. If you are unable to find the solution, submit a HelpDesk request with a detailed explanation of the problem you are experiencing.

Please do not hesitate to contact the Evisions HelpDesk if any questions or problems arise. We are here to help you and want to ensure your success.

If you find that areas of this documentation could benefit from additional detail or clarification, please let us know. We are constantly trying to improve the installation process to make it as easy as possible.