

Watson & Walker zRoadshow

Session 26202

Mario Bezzi (mario@watsonwalker.com)

Frank Kyne (frank@watsonwalker.com)



Welcome/Adios

- Who are we?
 - Cheryl **Watson**, CEO of Watson & Walker Inc. since 1986, working on IBM mainframes since 1965 and her husband Tom **Walker**.
 - Brenda White, Mario Bezzi, Scott Barry, and Frank Kyne, plus Alan Murphy and Graham Horne.
- We publish Cheryl Watson's Tuning Letter (since 1991) and provide performance, sysplex, and software pricing consulting.
- Our latest addition is our Starter Pack Service Offering, where we help clients get the maximum value from their z/OS systems.
- We have two websites:
 - Watsonwalker.com General web site, free access for everyone.
 - Watsonwalkerpublications.com Subscriber-only – all Tuning Letters for last 29 years.
- This session provides some tidbits of information that we hope you will find valuable.



Topics - Mario

- **Our Important Messages Check**
- **Using SMF30 Counters to identify SIIS Activity**
- **Working with RAW SMF data in a workstation environment**
- **The IBM Record Generator**
- **Miscellanea**

Topics - Frank

- **SMF Record Generator**
- **z Open Automation Utilities**
- **Quick survey**
- **Some important dates**
- **User Key Common Storage Reminder for z/OS 2.4**
- **zEDC and z15 und zee IFAPRDxx member**
- **ERV refresher**
- **CPENABLE Update**
- **CICS Liberty High CPU APAR**
- **zIIPs, HiperDispatch, and Db2**
- **zPDT 'free' zIIPs**
- **Availability of FICON End-to-End Encryption**
- **DFSMSdss Tips**
- **Z Workload Interaction Correlator and z Workload Interaction Navigator**

Our Important Messages Check

The IMPORTANT_MESSAGES Check

- IBM recommends passing certain system messages to your alerting infrastructure so that the right people can be informed. However, identifying the specific messages that require this treatment, and using an available local automation package to detect and handle them is the customer's responsibility.
- The Watson and Walker IMPORTANT_MESSAGES check tracks specific system messages, raising a Health Checker exception if these messages are detected.
- It is provided with a default list of critical messages we build from Redbooks, manuals, APARs, customers' experiences. Users can extend this list with their own groups of environment-specific messages.
- We plan to periodically deliver updated versions of the important messages list, based on our continuous analysis of new software functions and on the feedback of users of the check.

What's new

- We asked **Adrian Burke** from Db2 for z/OS Development to help us identify Db2 specific messages which in his experience affected customers the most.
- 47 important Db2 messages were defined to a new Db2 specific Important Messages Check.

```

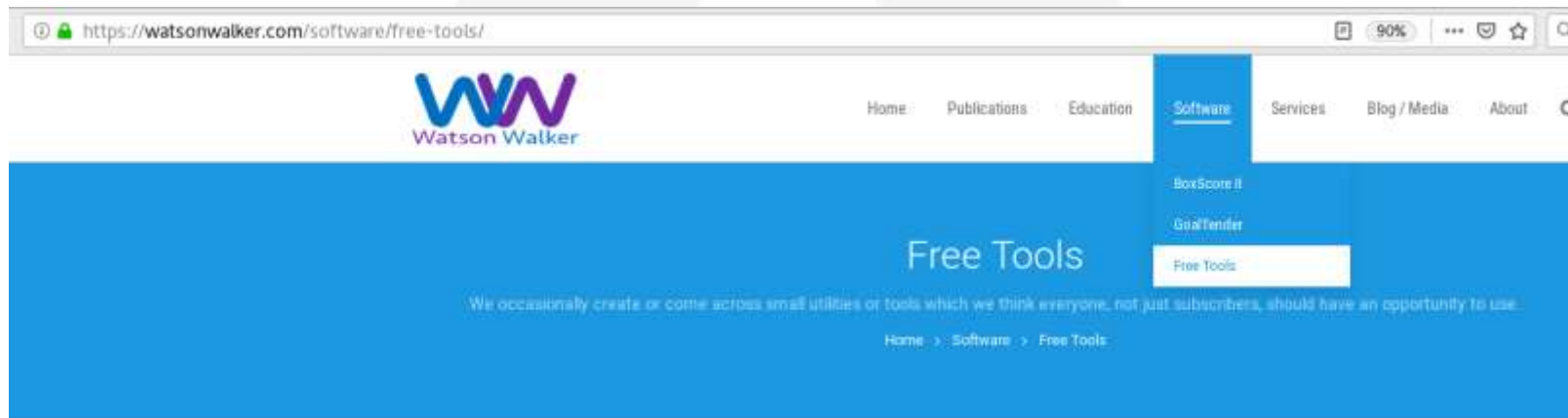
  Display  Filter  View  Print  Options  Search  Help
-----
SDSF HEALTH CHECKER DISPLAY  S0W1                LINE 66-84 (212)
COMMAND INPUT ==> █                               SCROLL ==>
NP      NAME                                     CheckOwner      State
      IMPORTANT_MESSAGES_CUSTOM                WATSONWALKER    ACTIVE(ENABLED)
      IMPORTANT_MESSAGES_SYS_CRIT              WATSONWALKER    ACTIVE(ENABLED)
      IMPORTANT_MESSAGES_WWD21911              WATSONWALKER    ACTIVE(ENABLED)
      IMPORTANT_MESSAGES_WWIM1905              WATSONWALKER    ACTIVE(ENABLED)
  
```

- These are in addition to the 152 we already track for z/OS plus the ones tagged as critical by z/OS.

Thank You Adrian!

Interested in getting it? Its free!

- We made the check available to the z/OS user community to help improve systems' availability.
- Some 70 customers downloaded it so far.



We'll occasionally place various small utilities and tools on this page, free for the taking. We provide no warranty for these tools, nor do we provide any support. (If you have a problem or suggestion, please let us know and we may pursue it if we have time.) The utilities and tools have no copyright, and we request that you not attempt to sell them for profit. Click on the heading of each item to read more about the tool.

IMPORTANT MESSAGES Health Check

How many times have you experienced a serious outage, only to discover that there was a warning message on the console, informing you of the impending doom? Of course, you only discover the message after the outage. Or even worse, when you discover the message, a colleague says "Oh, I saw that message, but I didn't think it was important." Grrr.

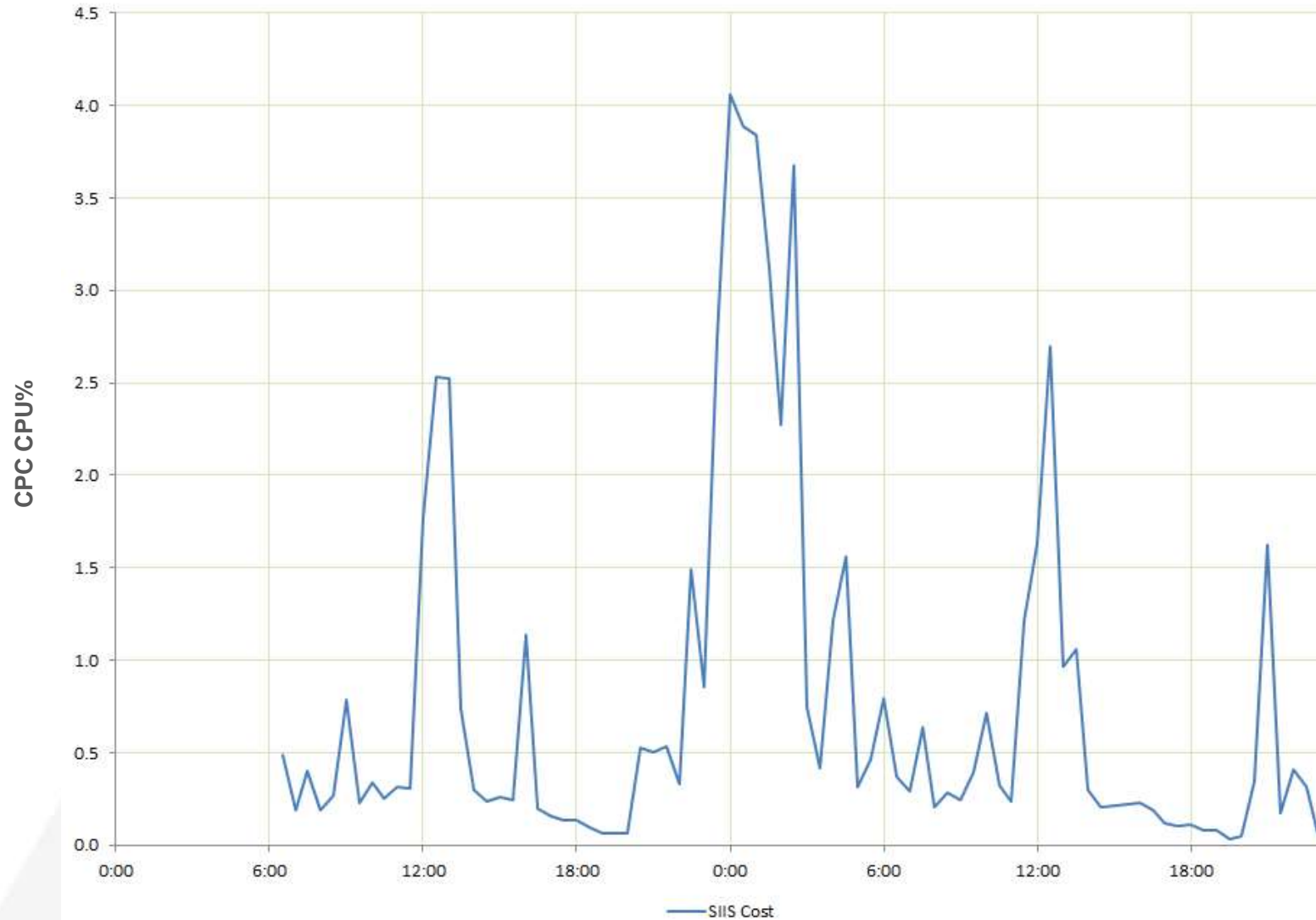
<https://watsonwalker.com/software/free-tools/>

Using SMF30 Counters to identify SaaS Activity

Store Into Instruction Stream (SIIS)

- Modern CPCs really don't like programs that store into the instruction stream (SIIS). As a result affected program's CPU utilization increases **significantly**.
- IBM has warned against this for years, but it is more of an issue now.
- Compilers are designed not to do this, however, if you have Assembler programs that do a lot of this, that could be an issue.
- CPU MF can be used to help identify the potential SIIS timeframes. This is not an exact measurement as the used metric has inherent noise, but experience has shown that when certain thresholds are exceeded, it is likely because of SIIS activity. SMF30COUNT data can be used to attempt identify the culprit by looking at individual program's CPI.
- For additional information see:
 Identifying “Store Into Instruction Stream”•(SIIS) Inefficiency by Using CPU MF Counters
<http://www-03.ibm.com/support/techdocs/atmastr.nsf/WebIndex/WP102806>

Store Into Instruction Stream (SIIS)



SMF 30 Instruction Counts – aka SMF30COUNT

z/OS 2.1 introduced the ability to collect instruction counts at the job/step level, meant to provide a more consistent metric of the work done compared to CPU time.

Optionally provides Instruction Counts in SMF 30 Counter Data Section

- Requires CPUMF basic counters in HIS be active
- New keyword SMF30COUNT|NOSMFCOUNT in SMFPRMxx

Not really designed to calculate the CPI – It doesn't provide the number of cycles – but less accurate CPI values can be calculated and used to detect large variations in programs' behavior.

SMF 30 Counter Data Section

| | | | | | |
|----|----|--------------------------------|---|--------|--|
| 8 | 8 | SMF30_Inst_CP_Task | 8 | binary | The number of instructions executed while running on a standard processor as a task when it is not eligible for an offload processor and it is not associated with an enclave. |
| 16 | 10 | SMF30_Inst_CP_NonPreemptSRB | 8 | binary | The number of instructions executed while running on a standard processor as a non-preemptable SRB. |
| 24 | 18 | SMF30_Inst_CP_PreemptSRB | 8 | binary | The number of instructions executed while running on a standard processor as a preemptable or client SRB when it is not associated with an enclave. |
| 32 | 20 | SMF30_Inst_Offload | 8 | binary | The number of instructions executed while running on an offload processor when not associated with an enclave. |
| 40 | 28 | SMF30_Inst_OffloadOnCP | 8 | binary | The number of instructions executed while running on a standard processor as eligible for an offload processor while not associated with an enclave. |
| 48 | 30 | SMF30_Inst_CP_Enclave | 8 | binary | The number of instructions executed while running on a standard processor as not eligible for an offload processor for an independent enclave. |
| 56 | 38 | SMF30_Inst_Offload_Enclave | 8 | binary | The number of instructions executed while running on an offload processor for an independent enclave. |
| 64 | 40 | SMF30_Inst_OffloadOnCP_Enclave | 8 | binary | The number of instructions executed while running on a standard processor as eligible for an offload processor for an independent enclave. |
| 72 | 48 | SMF30_Inst_CP_DepEnc | 8 | binary | The number of instructions executed while running on a standard processor as not eligible for an offload processor for a dependent enclave. |
| 80 | 50 | SMF30_Inst_Offload_DepEnc | 8 | binary | The number of instructions executed while running on an offload processor for a dependent enclave. |
| 88 | 58 | SMF30_Inst_OffloadOnCP_DepEnc | 8 | binary | The number of instructions executed while running on a standard processor as eligible for an offload processor for a dependent enclave. |

SMF 30 Instruction Counts – aka SMF30COUNT

When originally introduced, early use of the provided metrics showed unexpected variability due to impact of system related activity like interrupts on recorded values.

For this reason for some time IBM recommended not using them.

The recommendation recently changed to “Use them with a grain of salt: Make sure you identify and discard measurements affected by the above issue.”

But how do I do it?

Our experience with SMF30COUNT

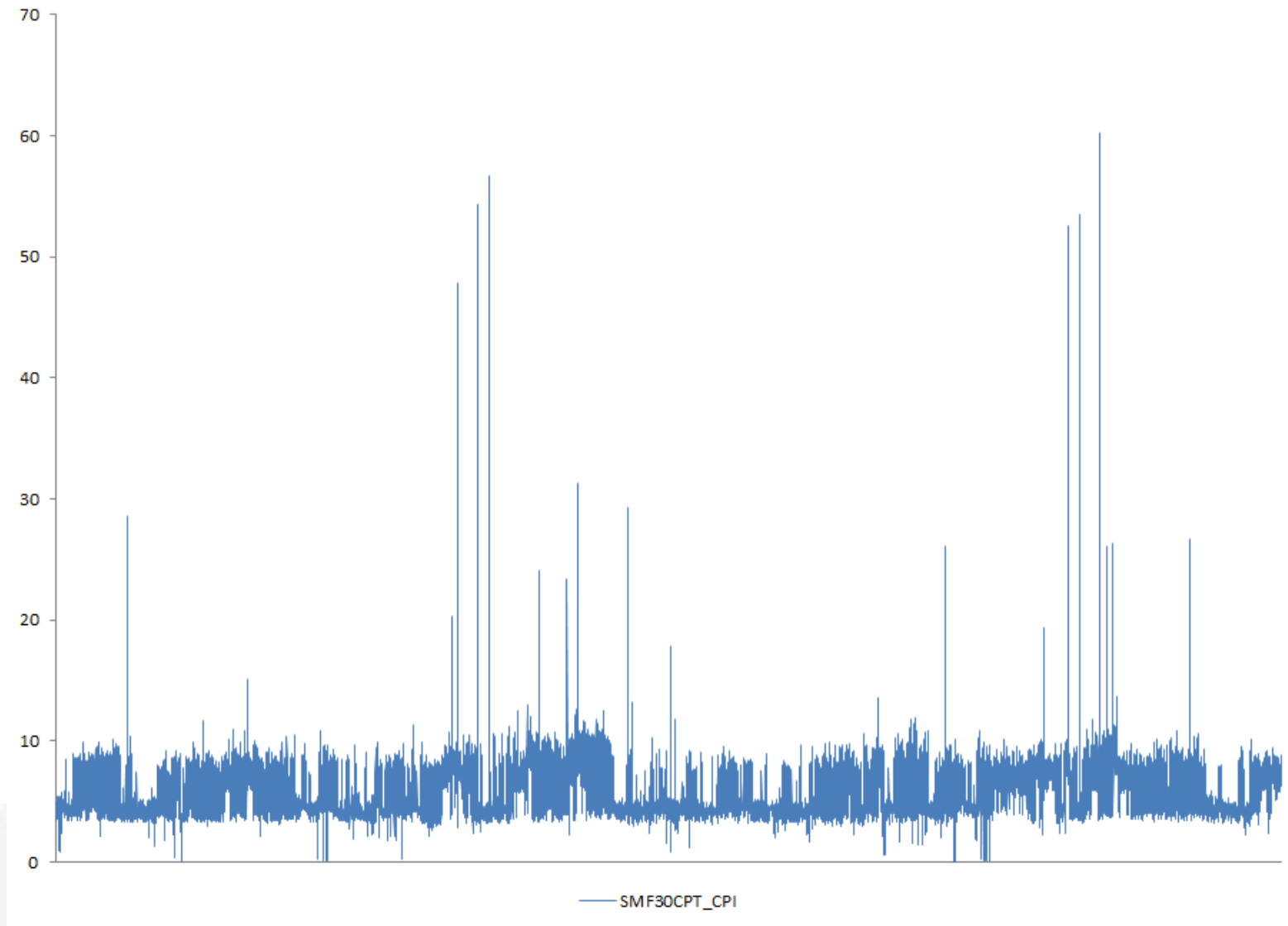
- Asked the customer to activate the recording
- Collected one week of SMF 30 data in conjunction with SMF 7x and SMF 113
- Confirmed the SIIS pattern shown above
- Analyzed SMF 30 Instruction Counters for a large number of individual program executions, taking into account average and max CPI

The following few charts report about three different programs showing very different behaviors.

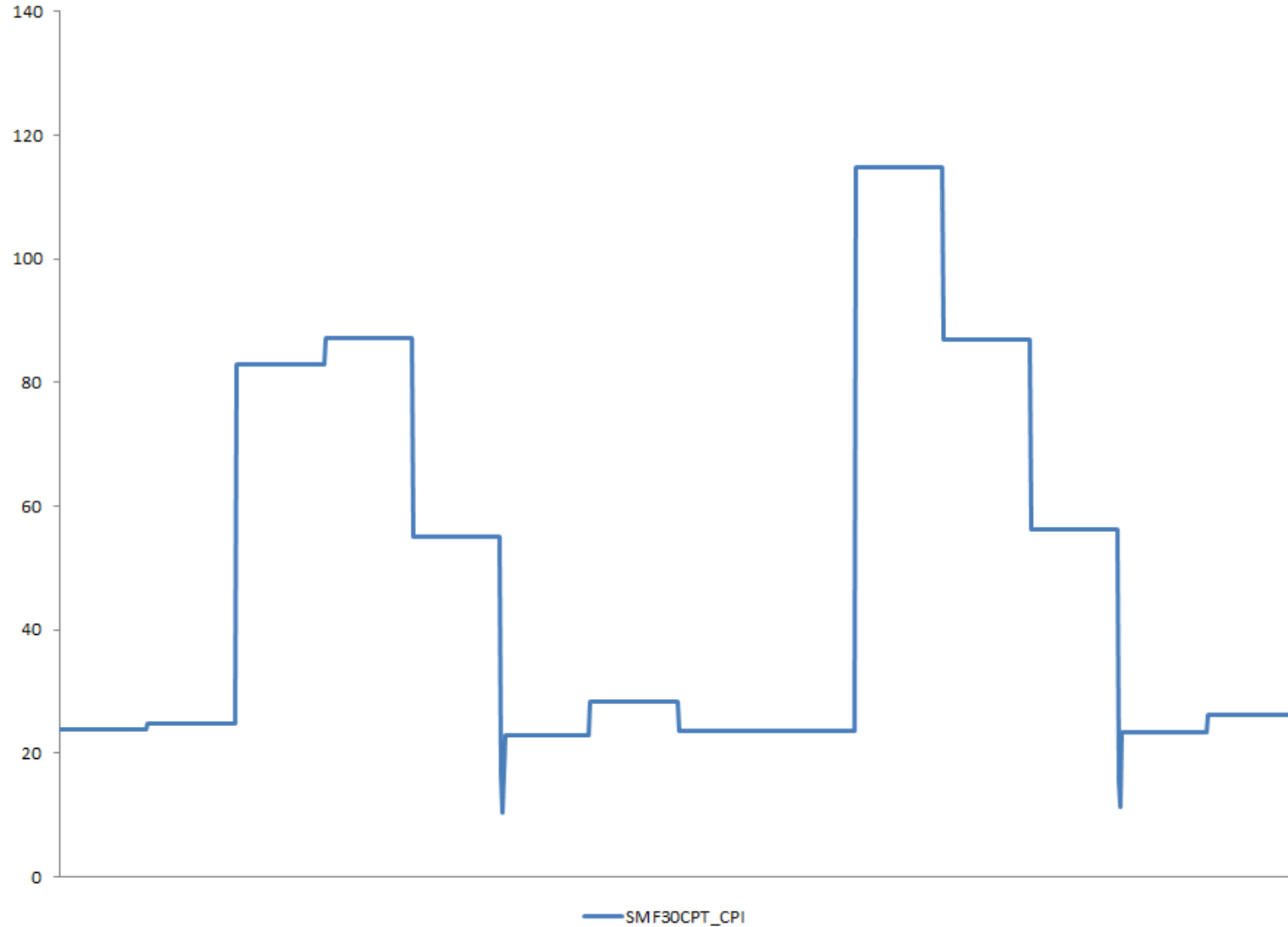
Calculating the CPI by executed program

```
Query History
1 SELECT SMFXDTE, SMFXTME, SMF30INSTFLGS1MRS,
2         SMF30PGM, SMF30CPT,
3         (SMF30_INST_CP_TASK + SMF30_INST_CP_ENCLAVE + SMF30_INST_CP_DEPENC + SMF30_INST_CP_PREEMPTSRB +
4         SMF30_INST_OFFLOADONCP + SMF30_INST_OFFLOADONCP_ENCL + SMF30_INST_OFFLOADONCP_DEPENC) as SMF30CPT_INST,
5
6         (SMF30CPT * 50000000.0) / -- Note: SMF30CPT * 50000000 gives the approximate number of cycles (z13)
7         (SMF30_INST_CP_TASK + SMF30_INST_CP_NONPREEMPTSRB + SMF30_INST_CP_PREEMPTSRB +
8         SMF30_INST_CP_ENCLAVE + SMF30_INST_CP_DEPENC +
9         SMF30_INST_OFFLOADONCP + SMF30_INST_OFFLOADONCP_ENCL + SMF30_INST_OFFLOADONCP_DEPENC) as SMF30CPT_CPI,
10
11        SMF30_INST_CP_TASK,
12        SMF30_INST_CP_NONPREEMPTSRB
13        SMF30_INST_CP_ENCLAVE,
14        SMF30_INST_CP_DEPENC,
15        SMF30_INST_CP_PREEMPTSRB,
16        SMF30_INST_OFFLOADONCP,
17        SMF30_INST_OFFLOADONCP_ENCL,
18        SMF30_INST_OFFLOADONCP_DEPENC
19
20 FROM SMF304CDS
21 WHERE SMF30INSTFLGS1MRS = 0
```

Case #1 – Stable user program (19K Observations)

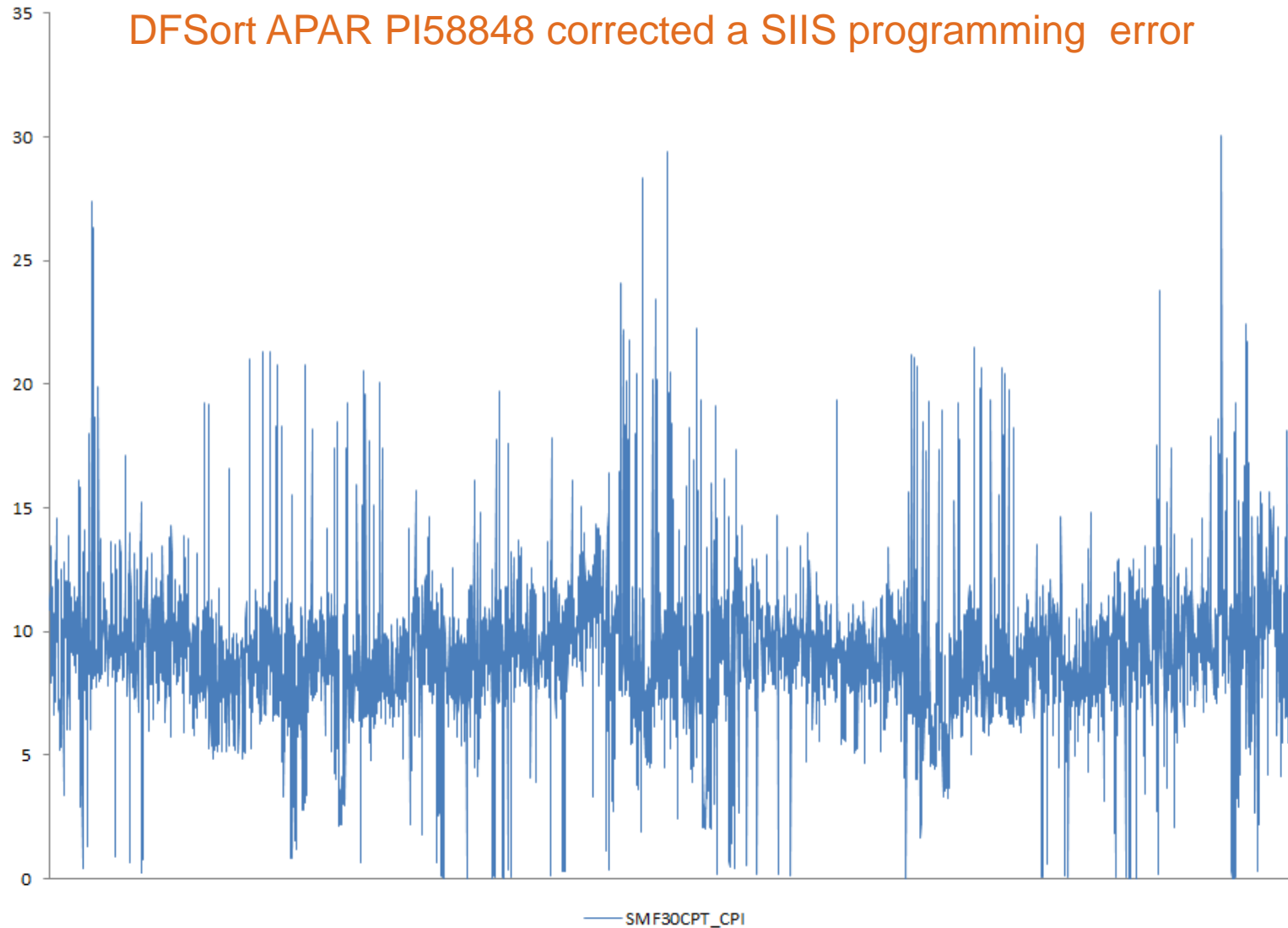


Case #2 – User program probably affected by SIIS (700 observations)



Case #3 – DFSort (5500 observations).

DFSort APAR PI58848 corrected a SIIIS programming error



Summary

- Store Into the Instruction Stream (SIIS) can impact your system efficiency.
- Hardware Instrumentation (SMF 113) can help detect it. Enable it everywhere!
- Although designed for different scopes SMF 30 Instruction Counters can be used to identify programs affected by SIIS activity.
- In our experience SMF 30 Instruction Counters proved very useful in spotting unusual behaviors. The margin of error in the measurements was low and the outliers easy to identify.
- For these reasons we recommend enabling the SMF30COUNT setting.

Working with RAW SMF data in a workstation environment

Our SMF processing flow

SMF data come in, normally in TERSE format



We upload it to our z/OS System

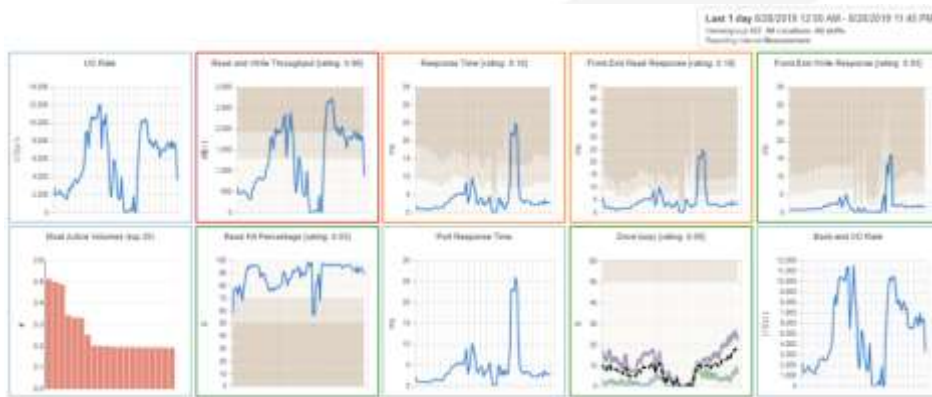


Here data is entered, checked for validity, prepared for processing with IM Vision, run some reduction tool.

Data is downloaded to workstation for additional processing



Workstation tools we use for SMF include IM Vision, EasySMF, homegrown..



Our SMF processing needs

- Most of our SMF data processing tools run or may run in our workstations.
- Unterse, validity check and preparation for Intellimagic Vision (RMFPACK) must be performed under z/OS. This requires lengthy uploads and downloads of large amounts of data.
- To make the process more efficient we worked to see if was possible to perform these three steps in a workstation environment. To do so:
 - We created an unterse program able to properly manage VBS records.
 - We created a SMF summary report generator like the one we made available on z/OS¹.
 - In cooperation with Intellimagic we created a Java version of their RMFPACK tool.
 - We started exploring using Java to process SMF data.

¹ The z/OS version of SMFSCRUB is available at <https://watsonwalker.com/software/free-tools/>

Untersing SMF data on my workstation

```
mario@ubuntu > ls -l SYSA.SMFALL.TRS  
-rw-r--r-- 1 mario_bezzi mario_bezzi 291506176 Jan 21 16:23 SYSA.SMFALL.TRS
```

Untersing SMF data on my workstation

```
mario@ubuntu > ls -l SYSA.SMFALL.TRS  
-rw-r--r-- 1 mario_bezzi mario_bezzi 291506176 Jan 21 16:23 SYSA.SMFALL.TRS
```

```
mario@ubuntu > time unterse SYSA.SMFALL.TRS SYSA.SMFALL.SMF
```

Untersing SMF data on my workstation

```
mario@ubuntu > ls -l SYSA.SMFALL.TRS
-rw-r--r-- 1 mario_bezzi mario_bezzi 291506176 Jan 21 16:23 SYSA.SMFALL.TRS
```

```
mario@ubuntu > time unterse SYSA.SMFALL.TRS SYSA.SMFALL.SMF
** unterse starting terse decode unpack v1.2.3 01:25:13 02/28/2020 **
** unterse derived from github.com/openmainframeproject/tersedecompress **
** unterse input - filename: SYSA.SMFALL.TRS
** unterse output - filename: SYSA.SMFALL.SMF
** unterse blksize= 32760 lrecl=32767 packtype=PACK recfm=VARIABLE
** unterse input file size: 291505932 bytes output file size: 2052780682 bytes compression ratio: 14%
** unterse terse complete decode unpack 01:25:55 02/28/2020 **
** unterse return code: 0
```

```
real    0m42.491s
user    0m41.386s
sys     0m1.088s
```

Checking SMF data for validity

```
mario@ubuntu > time smfscrub -f SYSA.SMFALL.SMF
```

Checking SMF data for validity

```
mario@ubuntu > time smfscrub -f SYSA.SMFALL.SMF
SMFSCRUB v2.1 Processing started on Fri Feb 28 01:30:55 2020
```

SMF Basic Information:

| Type | Sub | Sid | Records | Bytes | MinLen | AvgLen | MaxLen | Min DateTime | Max DateTime |
|------|-----|------|---------|-----------|--------|--------|--------|---------------------|---------------------|
| 2 | 0 | SYB0 | 1 | 18 | 18 | 18 | 18 | 2020-01-20 11:49:16 | 2020-01-20 11:49:16 |
| 3 | 0 | SYB0 | 1 | 18 | 18 | 18 | 18 | 2020-01-20 12:16:13 | 2020-01-20 12:16:13 |
| 110 | 2 | SYB0 | 377296 | 635966704 | 186 | 1685 | 32754 | 2019-11-03 22:22:02 | 2019-11-04 23:21:23 |
| 110 | 2 | SYB1 | 344381 | 411645644 | 186 | 1195 | 32756 | 2019-11-03 23:21:21 | 2019-11-04 23:13:00 |
| 110 | 2 | SYB2 | 337865 | 384920928 | 186 | 1139 | 32754 | 2019-11-03 23:59:37 | 2019-11-04 23:44:49 |
| 110 | 2 | SYB3 | 349876 | 620247370 | 186 | 1772 | 32754 | 2019-11-03 22:41:23 | 2019-11-04 23:47:11 |

```
SMFSCRUB - Processing ended on Fri Feb 28 01:31:03 2020
```

```
SMFSCRUB - Completion code is 0
```

```
real    0m7.936s
user    0m7.533s
sys     0m0.404s
```

Preparing for processing with IM Vision

```
mario@ubuntu > ls -l SYSA.SMFALL.*  
-rw-r--r-- 1 mario_bezzi mario_bezzi 2052780682 Feb 28 01:25 SYSA.SMFALL.SMF  
-rw-r--r-- 1 mario_bezzi mario_bezzi 291506176 Jan 21 16:23 SYSA.SMFALL.TRS
```


Preparing for processing with IM Vision

```
mario@ubuntu > ls -l SYSA.SMFALL.*  
-rw-r--r-- 1 mario_bezzi mario_bezzi 2052780682 Feb 28 01:25 SYSA.SMFALL.SMF  
-rw-r--r-- 1 mario_bezzi mario_bezzi 291506176 Jan 21 16:23 SYSA.SMFALL.TRS  
  
mario@ubuntu > time java SMF2ZRF SYSA.SMFALL.SMF SYSA.SMFALL.ZRF
```

Preparing for processing with IM Vision

```
mario@ubuntu > ls -l SYSA.SMFALL.*  
-rw-r--r-- 1 mario_bezzi mario_bezzi 2052780682 Feb 28 01:25 SYSA.SMFALL.SMF  
-rw-r--r-- 1 mario_bezzi mario_bezzi 291506176 Jan 21 16:23 SYSA.SMFALL.TRS
```

```
mario@ubuntu > time java SMF2ZRF SYSA.SMFALL.SMF SYSA.SMFALL.ZRF  
SMF2ZRF Copyright (c) 2020 IntelliMagic B.V.  
INFILE: SYSA.SMFALL.SMF succesfully opened for reading data set records  
OUTFILE: SYSA.SMFALL.ZRF succesfully opened for writing compressed data  
The SMF2ZRF compressor has been started. Version 1.0.0.  
Ready: 1409420 records processed from INFILE,  
1957.7 MB (2052780682 bytes) written to OUTFILE,  
as 187.5 MB (196560154 bytes) compressed data.  
SMF2ZRF processing completed successfully
```

```
real    0m36.140s  
user    0m28.417s  
sys     0m7.002s
```

Preparing for processing with IM Vision

```
mario@ubuntu > ls -l SYSA.SMFALL.*  
-rw-r--r-- 1 mario_bezzi mario_bezzi 2052780682 Feb 28 01:25 SYSA.SMFALL.SMF  
-rw-r--r-- 1 mario_bezzi mario_bezzi 291506176 Jan 21 16:23 SYSA.SMFALL.TRS
```

```
mario@ubuntu > time java SMF2ZRF SYSA.SMFALL.SMF SYSA.SMFALL.ZRF  
SMF2ZRF Copyright (c) 2020 IntelliMagic B.V.  
INFILE: SYSA.SMFALL.SMF succesfully opened for reading data set records  
OUTFILE: SYSA.SMFALL.ZRF succesfully opened for writing compressed data  
The SMF2ZRF compressor has been started. Version 1.0.0.  
Ready: 1409420 records processed from INFILE,  
1957.7 MB (2052780682 bytes) written to OUTFILE,  
as 187.5 MB (196560154 bytes) compressed data.  
SMF2ZRF processing completed successfully
```

```
real    0m36.140s  
user    0m28.417s  
sys     0m7.002s
```

```
mario@ubuntu > ls -l SYSA.SMFALL.*  
-rw-r--r-- 1 mario_bezzi mario_bezzi 2052780682 Feb 28 01:25 SYSA.SMFALL.SMF  
-rw-r--r-- 1 mario_bezzi mario_bezzi 291506176 Jan 21 16:23 SYSA.SMFALL.TRS  
-rw-r--r-- 1 mario_bezzi mario_bezzi 196560154 Feb 28 01:46 SYSA.SMFALL.ZRF
```

The IBM Record Generator

The IBM Record Generator for Java

- Provides a stand-alone utility to generate Java helper classes based on the associated-data (ADATA) files produced from compiling COBOL copybooks or assembler DSECTs.
- These Java helper classes can then be used in Java applications to access data from the COBOL or assembler language-specific record structures.
- The Record Generator for Java V3.0 is freely available to download for all users of z/OS V2.1, or later. License redistribution rights are provided for deployment to non-z/OS platforms to support distributed development and build.

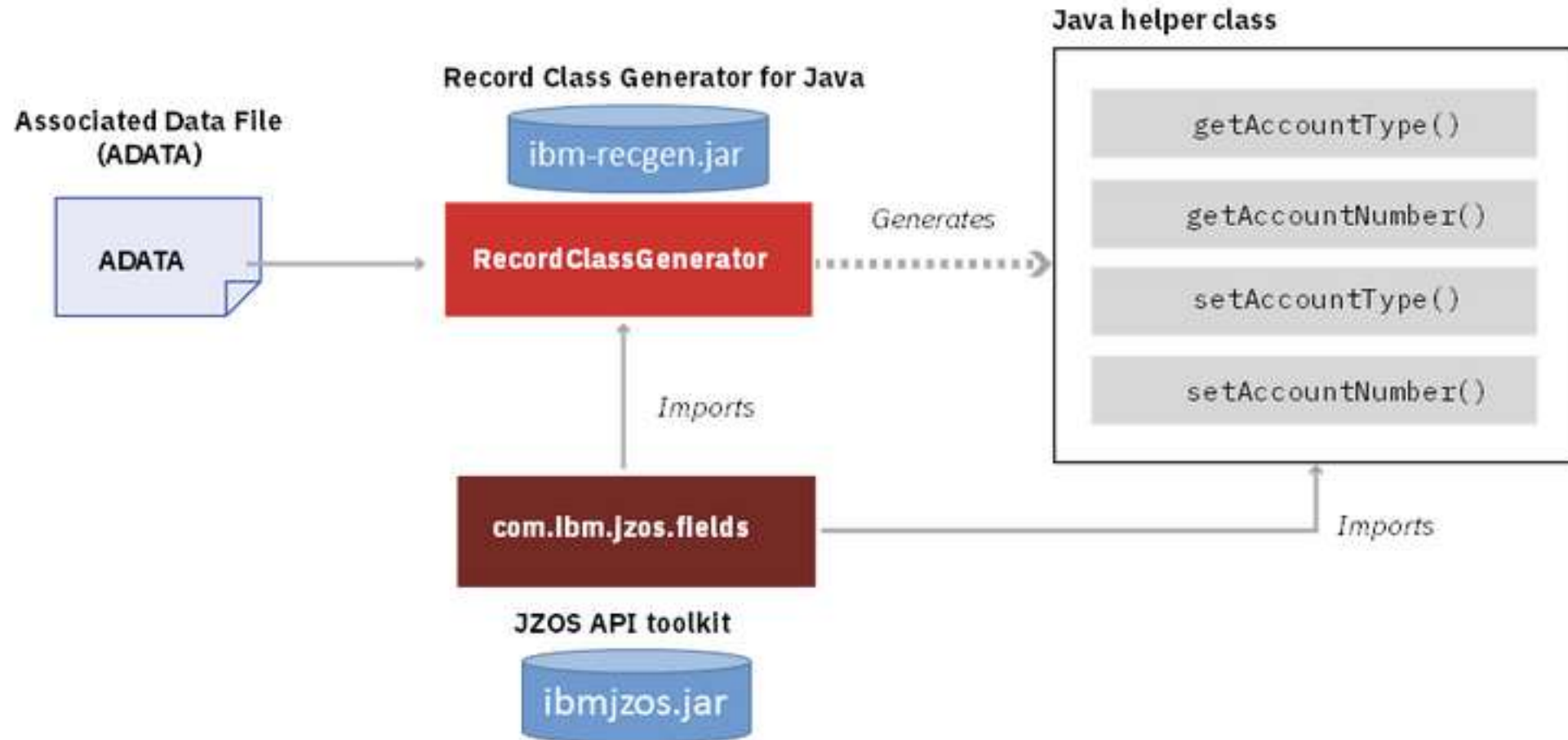
Home Page https://www.ibm.com/support/knowledgecenter/SSMQ4D_3.0.0/documentation/welcome.html

Announcement Letter <https://www-01.ibm.com/common/ssi/cgi-in/ssialias?infotype=an&subtype=ca&supplier=897&letternum=ENUS217-295>

EasySMF:JE

- For our SMF processing needs we also use EasySMF by Black Hill Software.
- EasySMF offers an optional component called EasySMF:JE, which makes processing SMF in Java very easy. As part of EasySMF:JE Andrew Rowling ships ready to use helper classes for most popular SMF records.
- EasySMF:JE helper classes, which are custom built around SMF, provide more sophisticated data access methods than those created by the IBM Record Generator, which is a general purpose ADATA translator.

The IBM Record Generator for Java



The IBM Record Generator for Java

- Download the ibmjzos-2.4.4 or later jar file from your z/OS system – in our system it is located in /usr/lpp/java/J8.0_64/lib/ext
- Download the ibm-recgen.jar from: <https://developer.ibm.com/mainframe/products/record-generator-for-java/>
- Add both to your Java class path.
- On z/OS Run Assembler to generate the ASMADATA you need and download it to your workstation.
- Run the IBM Record Generator to create the Java helper classes you need.

The IBM Record Generator for Java

```
mario@ubuntu > ls -l
total 7880
-rw-r--r-- 1 mario_bezzi mario_bezzi 468274 Jan 11 17:20 asmadata.rawout ←
drwxr-xr-x 3 mario_bezzi mario_bezzi 4096 Apr 2 2019 com
-rw-rw-r-- 1 mario_bezzi mario_bezzi 78004 Feb 26 2019 ENUS217-295.PDF
-rw-r--r-- 1 mario_bezzi mario_bezzi 565660 Feb 26 2019 ibmjzos.jar ←
-rw-r--r-- 1 mario_bezzi mario_bezzi 135659 Feb 27 2018 ibm-recgen.jar
-rw-rw-r-- 1 mario_bezzi mario_bezzi 371662 Feb 26 2019 'IBM Record Generator for Java English 2017.09.29 ibm-recgen.zip'
-rw-rw-r-- 1 mario_bezzi mario_bezzi 417914 Feb 26 2019 'IBM Record Generator for Java.pdf'
-rw-r--r-- 1 mario_bezzi mario_bezzi 4823657 Jan 3 16:23 'IBM Record Generator for Java V3.0 PDFs.zip'
-rw-rw-r-- 1 mario_bezzi mario_bezzi 249707 Feb 26 2019 jzos_samples.zip
-rw-rw-r-- 1 mario_bezzi mario_bezzi 900408 Feb 26 2019 jzos_users_guide_v8.pdf
```

All we really need are the output from ASSEMBLER, and the two jar files mentioned above

The IBM Record Generator for Java

```
mario@ubuntu > time java \  
> -cp ./ibm-recgen.jar:./ibmjzos.jar com.ibm.recordgen.asm.RecordClassGenerator \  
> outputdir=./ gencache=false gensetters=false bufoffset=true \  
> adatafile=asmadata.rawout section=SMF71HDR \  
> package=com.ibm.rmfreq71 class=JZ0SSMF71HdrWrapper
```

The IBM Record Generator for Java

```
mario@ubuntu > time java \  
> -cp ./ibm-recgen.jar:./ibmjzos.jar com.ibm.recordgen.asm.RecordClassGenerator \  
> outputdir=./ gencache=false gensetters=false bufoffset=true \  
> adatafile=asmadata.rawout section=SMF71HDR \  
> package=com.ibm.rmfreq71 class=JZ0SSMF71HdrWrapper
```

```
IBM Record Generator for Java V3.0.1 Build 20180227-1206 on: Thu Feb 27 23:58:28 CET 2020  
Generating asmadata.rawout to: com/ibm/rmfrec71/JZ0SSMF71HdrWrapper.java
```

```
real    0m0.112s  
user    0m0.162s  
sys     0m0.022s
```

The IBM Record Generator for Java

```
mario@ubuntu > time java \  
> -cp ./ibm-recgen.jar:./ibmjzos.jar com.ibm.recordgen.asm.RecordClassGenerator \  
> outputdir=./ gencache=false gensetters=false bufoffset=true \  
> adatafile=asmadata.rawout section=SMF71HDR \  
> package=com.ibm.rmfreq71 class=JZOSSMF71HdrWrapper
```

```
IBM Record Generator for Java V3.0.1 Build 20180227-1206 on: Thu Feb 27 23:58:28 CET 2020  
Generating asmadata.rawout to: com/ibm/rmfrec71/JZOSSMF71HdrWrapper.java
```

```
real    0m0.112s  
user    0m0.162s  
sys     0m0.022s
```

```
mario@ubuntu > ls -l com/ibm/rmfrec71/JZOSSMF71HdrWrapper.java  
-rw-r--r-- 1 mario_bezzi mario_bezzi 824 Feb 27 23:58 com/ibm/rmfrec71/JZOSSMF71HdrWrapper.java
```


A simple helper class

```
JZOSSMF71HdrWrapper.java ✖
1 import com.ibm.jzos.fields.*;
2
3 // Generated by IBM Record Generator for Java V3.0.1 Build 20180227-1206 on: Fri Jan 03 16:24:42 CET 2020
4
5 public class JZOSSMF71HdrWrapper {
6     protected static AssemblerDatatypeFactory factory = new AssemblerDatatypeFactory();
7     static { factory.setStringTrimDefault(false); }
8
9     /** <pre>
10     SMF71HDR  DSECT </pre> */
11     public static final int SMF71HDR = factory.getOffset();
12
13     /** <pre>
14     SMF71HDC  DS      CL36      COMPLETE HEADER+PRODUCT SECTION TRIPL  &#x0040;WA05544
15             ORG      SMF71HDC                                &#x0040;WA05544 </pre> */
16     protected static final StringField SMF71HDC = factory.getStringField(36);
17
18     /** <pre>
19     SMF71LEN  DS      BL2      RECORD LENGTH </pre> */
20     static { factory.incrementOffset(-36); }
21     protected static final BinaryAsIntField SMF71LEN = factory.getBinaryAsIntField(2, false);
22
23     /** <pre>
24     SMF71SEG  DS      BL2      SEGMENT DESCRIPTOR </pre> */
25     protected static final BinaryAsIntField SMF71SEG = factory.getBinaryAsIntField(2, false);
26
27     /** <pre>
28     SMF71FLG  DS      BL1      HEADER FLAG BYTE </pre> */
29     protected static final BinaryAsIntField SMF71FLG = factory.getBinaryAsIntField(1, false);
30
```

Processing SMF record with Java

```
JZOSSMF71HdrWrapper.java  ReadSMFFile.java ✕
1 import java.io.*;
2
3 public class ReadSMFFile {
4
5     private static final int redbuf_SIZE = 32768;
6
7     public static void main(String[] args) throws IOException {
8
9         SMFReader MySMFReader = new SMFReader();
10        MySMFReader.Open(InputFile, redbuf_SIZE);
11
12        System.out.format(headingFormat, "Smf71Snm", "Smf71Dte", "Smf71Tme", "Smf71Dat", "Smf71Ist", "Smf71Int");
13
14        while ((reclen = MySMFReader.GetSMFRecord(redbuf)) != -1) {
15            reccount += 1; totlen += reclen;
16
17            JZOSSMF71HdrWrapper r71Hdr = new JZOSSMF71HdrWrapper(redbuf, 0);
18            if ((r71Hdr.getSmf71Rty() == 71) & (r71Hdr.getSmf71Prn() > 0)) {
19                JZOSSMF71ProWrapper r71Pro = new JZOSSMF71ProWrapper(redbuf, (int) r71Hdr.getSmf71Prs());
20                System.out.format(outputFormat,
21                    r71Pro.getSmf71Snm(),
22                    SMFFields.smfjdate(r71Hdr.getSmf71Dte()),
23                    SMFFields.smftime(r71Hdr.getSmf71Tme()),
24                    SMFFields.smfjdate(r71Pro.getSmf71Dat()),
25                    SMFFields.rmfirst(r71Pro.getSmf71Ist()),
26                    SMFFields.rmfind(r71Pro.getSmf71Int()));
27            }
28        }
29        System.out.println("Read " + reccount + " records, " + totlen + " bytes.");
30    }
31}
```


Processing SMF record with Java

```
Console  JZOSSMF71HdrWrapper.java  ReadSMFFile.java
<terminated> ReadSMFFile [Java Application] /usr/lib/jvm/java-8-openjdk-amd64/bin/java (Feb 28, 2020, 12:25:05 AM)
Smf71Snm Smf71Dte Smf71Tme Smf71Dat Smf71Ist Smf71Int
SYSA 2019/10/02 12:15:00.11 2019/10/02 12:00:00 899
SYSA 2019/10/02 12:30:00.09 2019/10/02 12:15:00 899
SYSA 2019/10/02 12:45:00.09 2019/10/02 12:30:00 900
SYSA 2019/10/02 13:00:00.08 2019/10/02 12:45:00 899
SYSA 2019/10/02 13:15:00.08 2019/10/02 13:00:00 900
SYSA 2019/10/02 13:30:00.09 2019/10/02 13:15:00 900
SYSA 2019/10/02 13:45:00.17 2019/10/02 13:30:00 900
SYSA 2019/10/02 14:00:00.15 2019/10/02 13:45:00 899
SYSA 2019/10/02 14:15:00.12 2019/10/02 14:00:00 899
SYSA 2019/10/02 14:30:00.26 2019/10/02 14:15:00 900
SYSA 2019/10/02 14:45:00.33 2019/10/02 14:30:00 900
SYSA 2019/10/02 15:00:00.13 2019/10/02 14:45:00 899
SYSA 2019/10/02 15:15:00.09 2019/10/02 15:00:00 899
SYSA 2019/10/02 15:30:00.07 2019/10/02 15:15:00 899
SYSA 2019/10/02 15:45:00.07 2019/10/02 15:30:00 900
SYSA 2019/10/02 16:00:00.13 2019/10/02 15:45:00 900
SYSA 2019/10/02 16:15:00.08 2019/10/02 16:00:00 899
SYSA 2019/10/02 16:30:00.07 2019/10/02 16:15:00 899
SYSA 2019/10/02 16:45:00.07 2019/10/02 16:30:00 900
```

Summary

- With a reasonable programming effort we were able to create workstation versions of programs to untruncate, validity check and prepare SMF data for processing with Intellimagic Vision.
- In our limited, early tests, Java and the IBM Record Generator utility gave promising results for ad-hoc analysis of SMF metrics otherwise not available.
- These new tools significantly reduced time and effort we spend to processing large amounts of SMF data.

Miscellanea

Interesting sessions we attended in Fort Worth

IBM WSC Hot Topics by Kathy Walsh

<https://events.share.org/Winter2020/Public/SessionDetails.aspx?&SessionID=10355>

Understanding LPAR Controls for Better Performance by Kathy Walsh

<https://events.share.org/Winter2020/Public/SessionDetails.aspx?&SessionID=10303>

IBM z15 System Recovery Boost by Dave Surman

<https://events.share.org/Winter2020/Public/SessionDetails.aspx?&SessionID=10239>

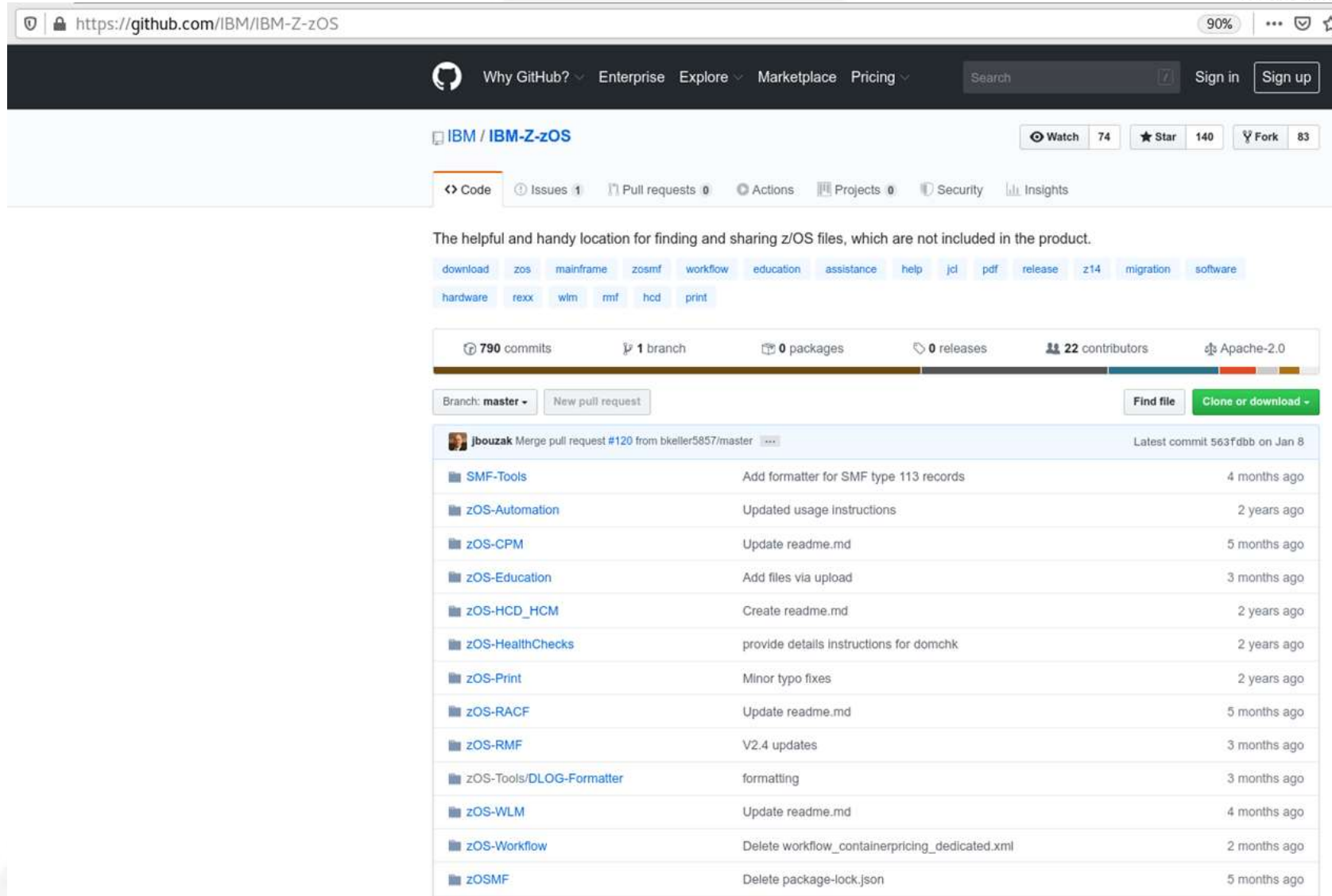
What's New in z/OS Communications Server? by Gus Kassimis and Sam Raynolds

<https://events.share.org/Winter2020/Public/SessionDetails.aspx?&SessionID=9520>

The Hitchhiker's Guide to MIPS and Capacity Planning by David Hutton

<https://events.share.org/Winter2020/Public/SessionDetails.aspx?&SessionID=10277>

z/OS GitHub



The screenshot shows the GitHub repository page for `IBM/IBM-Z-zOS`. The page includes a navigation bar with links for Why GitHub?, Enterprise, Explore, Marketplace, and Pricing. The repository name is `IBM / IBM-Z-zOS`, with 74 watches, 140 stars, and 83 forks. The main content area shows a list of files and folders, including `SMF-Tools`, `zOS-Automation`, `zOS-CPM`, `zOS-Education`, `zOS-HCD_HCM`, `zOS-HealthChecks`, `zOS-Print`, `zOS-RACF`, `zOS-RMF`, `zOS-Tools/DLOG-Formatter`, `zOS-WLM`, `zOS-Workflow`, and `zOSMF`. The repository has 790 commits, 1 branch, 0 packages, 0 releases, and 22 contributors.

790 commits 1 branch 0 packages 0 releases 22 contributors Apache-2.0

Branch: master - New pull request Find file Clone or download -

| File/Folder | Description | Last Commit |
|--------------------------|--|--------------|
| SMF-Tools | Add formatter for SMF type 113 records | 4 months ago |
| zOS-Automation | Updated usage instructions | 2 years ago |
| zOS-CPM | Update readme.md | 5 months ago |
| zOS-Education | Add files via upload | 3 months ago |
| zOS-HCD_HCM | Create readme.md | 2 years ago |
| zOS-HealthChecks | provide details instructions for domchk | 2 years ago |
| zOS-Print | Minor typo fixes | 2 years ago |
| zOS-RACF | Update readme.md | 5 months ago |
| zOS-RMF | V2.4 updates | 3 months ago |
| zOS-Tools/DLOG-Formatter | formatting | 3 months ago |
| zOS-WLM | Update readme.md | 4 months ago |
| zOS-Workflow | Delete workflow_containerpricing_dedicated.xml | 2 months ago |
| zOSMF | Delete package-lock.json | 5 months ago |

Educational Assistance Modules for z/OS

The screenshot shows a GitHub repository page for `IBM-Z-zOS` at the `master` branch, specifically the `zOS-V2.4-Education` directory. The page displays a list of files added to the repository, all dated 7 months ago. The files are PDF documents related to z/OS V2.4 Education (IEA) Files. The repository is owned by `jbouzak` and has its latest commit by `358ede6` on Dec 10, 2019.

| File Name | Description | Added |
|--|-------------------------------------|--------------|
| .. | | |
| IEA V2R4 AT-TLS support for TLS v1.3.pdf | Add z/OS V2.4 Education (IEA) Files | 7 months ago |
| IEA V2R4 Allocation.pdf | Add z/OS V2.4 Education (IEA) Files | 7 months ago |
| IEA V2R4 Alternate subchannel set support for Linux... | Add z/OS V2.4 Education (IEA) Files | 7 months ago |
| IEA V2R4 Binder COMPAT(MIN.XX).pdf | Add z/OS V2.4 Education (IEA) Files | 7 months ago |
| IEA V2R4 Communications Server epics.pdf | Add z/OS V2.4 Education (IEA) Files | 7 months ago |
| IEA V2R4 Continuous Delivery Items.pdf | Add z/OS V2.4 Education (IEA) Files | 7 months ago |
| IEA V2R4 DFSMS.pdf | Add z/OS V2.4 Education (IEA) Files | 7 months ago |
| IEA V2R4 Dynamic IO for standalone CF.pdf | Add z/OS V2.4 Education (IEA) Files | 7 months ago |
| IEA V2R4 Health Check for JES2 Checkpoint Reconf... | Add z/OS V2.4 Education (IEA) Files | 7 months ago |
| IEA V2R4 ITDS Activity log support async queue.pdf | Add z/OS V2.4 Education (IEA) Files | 7 months ago |
| IEA V2R4 ITDS Password prompt support.pdf | Add z/OS V2.4 Education (IEA) Files | 7 months ago |
| IEA V2R4 InfoPrint Server Epics.pdf | Add z/OS V2.4 Education (IEA) Files | 7 months ago |
| IEA V2R4 JES2 64-bit checkpoint sharing.pdf | Add z/OS V2.4 Education (IEA) Files | 7 months ago |
| IEA V2R4 JES2 Disk Reader Support.pdf | Add z/OS V2.4 Education (IEA) Files | 7 months ago |
| IEA V2R4 JES2 Encryption of SPOOL data sets.pdf | Add z/OS V2.4 Education (IEA) Files | 7 months ago |
| IEA V2R4 JES2 Multi job NJE Job Streams .pdf | Add z/OS V2.4 Education (IEA) Files | 7 months ago |
| IEA V2R4 JES2 assembler exit config options remed... | Add z/OS V2.4 Education (IEA) Files | 7 months ago |
| IEA V2R4 JES2 exploitation of non executable mem... | Add z/OS V2.4 Education (IEA) Files | 7 months ago |
| IEA V2R4 JES2 support of JES3 ROUTE XEQ JECL... | Add z/OS V2.4 Education (IEA) Files | 7 months ago |
| IEA V2R4 Language Environment.pdf | Add z/OS V2.4 Education (IEA) Files | 7 months ago |

Frank

End of Support Quick Reference

| Prod Name | Prod Number | Release | GA Date | EoS Date |
|-----------|-------------|---------|------------|------------|
| z/OS | 5650-ZOS | 2.1 | 2013-09-30 | 2018-09-30 |
| z/OS | 5650-ZOS | 2.2 | 2015-09-30 | 2020-09-30 |
| z/OS | 5650-ZOS | 2.3 | 2017-09-30 | |
| z/OS | 5650-ZOS | 2.4 | 2019-09-30 | |
| CICS | 5655-Y04 | 5.1 | 2012-12-14 | 2019-07-01 |
| CICS | 5655-Y04 | 5.2 | 2014-06-13 | 2020-12-31 |
| CICS | 5655-Y04 | 5.3 | 2015-12-11 | |
| CICS | 5655-Y04 | 5.4 | 2017-06-16 | |
| CICS | 5655-Y04 | 5.5 | 2018-12-14 | |
| CICS | 5655-Y04 | 5.6 | Open Beta | |
| CICS | 5655-S97 | 4.1 | 2009-06-26 | 2017-09-30 |
| CICS | 5655-S97 | 4.2 | 2011-06-24 | 2018-09-30 |
| Db2 | 5605-DB2 | 10.1 | 2010-10-22 | 2017-09-30 |
| Db2 | 5615-DB2 | 11.1 | 2013-10-25 | 2020-09-30 |
| Db2 | 5650-DB2 | 12.1 | 2016-10-21 | |

End of Support Quick Reference

| Prod Name | Prod Number | Release | GA Date | EoS Date |
|------------------|-------------|---------|------------|------------|
| IMS | 5635-A04 | 13.1 | 2013-10-25 | 2018-11-06 |
| IMS | 5635-A05 | 14.1 | 2015-10-30 | 2020-11-30 |
| IMS | 5635-A06 | 15.1 | 2017-10-27 | |
| WebSphere MQ | 5655-R36 | 7.1 | 2011-11-25 | 2017-11-06 |
| MQ for z/OS | 5655-W97 | 8.0 | 2014-06-13 | 2020-04-30 |
| MQ for z/OS | 5655-MQ9 | 9.0 | 2016-06-17 | |
| MQ for z/OS | 5655-MQ9 | 9.1 | 2018-07-03 | |
| Enterprise COBOL | 5655-S71 | 4.1 | 2007-12-14 | 2014-04-30 |
| Enterprise COBOL | 5655-S71 | 4.2 | 2009-08-28 | 2021-09-30 |
| Enterprise COBOL | 5655-W32 | 5.1 | 2013-06-21 | 2020-04-30 |
| Enterprise COBOL | 5655-W32 | 5.2 | 2015-02-27 | 2020-04-30 |
| Enterprise COBOL | 5655-EC6 | 6.1 | 2016-03-18 | |
| Enterprise COBOL | 5655-EC6 | 6.2 | 2017-09-08 | |
| Enterprise COBOL | 5655-EC6 | 6.3 | 2019-09-06 | |

User Key Common Storage Reminder

CICS/TS 5.2 is Minimum CICS level for z/OS 2.4

- z/OS 2.3 was the last z/OS release to support user key common storage.
 - It is being removed because it represents a security exposure.
- To provide *temporary* relief for customers that still have programs that rely on user key common storage, APAR [OA56180](#) for z/OS 2.1/2.2/2.3 delivered a function called Restricted Use CSA (RUCSA).
 - This lets you control who can use user key CSA, but it doesn't eliminate the security concern.
 - RUCSA is enabled by adding RUCSA=(x,y) to your IEASYSxx member.
- To further encourage customers to completely eliminate the use of user key CSA, RUCSA is a chargeable z/OS option in z/OS 2.4.
 - This means that you must enable it in your IFAPRDxx member.
 - Because this is a chargeable feature, you must inform IBM that you plan to use it. This should result in your ServerPac order including the appropriate definitions in the IFAPRDxx member that is supplied as part of your ServerPac order.
 - If your z/OS 2.4 IEASYSxx specifies RUCSA, but your IFAPRDxx does not, your system will wait state when you IPL.
- See TL article [Bye Bye User Key Common Storage](#) for more info about RUCSA.

zEDC Changes on z15

- On z15, the zEDC PCIE card is replaced by the on-chip zEDC Accelerator.
 - Unlike the zEDC PCIE cards, there is no charge for the accelerator.
 - However, there IS still a zEDC chargeable feature on z/OS.
- On z15, the zEDC compression/decompression function can be called Synchronously or Asynchronously – this differentiation is new with z15.
 - Synchronous callers do NOT require the chargeable z/OS feature. So no changes are required to IFAPRDxx.
 - Asynchronous requests are handled by a SAP processor. These DO require that the IFAPRDxx member is updated to reflect that you are using the chargeable feature.
- To our knowledge, the only IBM exploiters of the Synchronous interface are zlib, MQ, and Connect Direct. All other IBM exploiters (BSAM/QSAM, HSM, DSS, SMF, zFS, etc) use the asynchronous interface and therefore DO require the chargeable feature.
- If you use ISV products that exploit zEDC, consult your vendor to see which flavor they use.

ERV Refresher

- The ENQUEUE Residence Value (ERV) specifies how many service units a unit of work should receive a temporary dispatching priority boost if it is holding an ENQ that is being requested by a higher importance unit of work.
 - This is intended to improve availability of high importance work.
 - It does NOT remove the need for you to identify and address the causes of high importance work being delayed by ENQ contention with lower importance work.
- The default ERV value is 500 service units. The IBM recommendation is to set this to 50,000 service units AND to address the cause of the contention.
- You control the length of the temporary boost using the ERV parm, but you do NOT have any control over the target dispatching priority.
- The system dynamically identifies a DP that should place the unit of work that is holding the ENQ above about 40% of the work in the system.
 - If you have an environment where > 55% of the system capacity is being used by high importance work, this could result in the lower importance work impacting the capacity that is available to your high importance work.
 - The 'PROMOTED' section of the RMF Workload Activity report shows the CPU seconds used by promoted work units. If this is high, ADDRESS THE ROOT CAUSE of the contention.
- Thanks to **Kathy Walsh** for providing this info. See [User Experience](#) in latest TL for more info.

CPENABLE Changes

- The CPENABLE parm in IEAOPTxx specifies the low and high thresholds that should be used to determine whether to enable more CPs to process I/O interrupts.
- The *default* values are (0,0), meaning that all CPs should be enabled for I/O interrupts.
 - However for the longest time, the *recommended* values have been (10,30).
- Due to the speed of recent CPCs, and to maintain a balance between responsiveness and throughput, the WSC is changing the recommended values for z14 and z15 to be (5,15).
- WSC [FLASH10337](#) (currently being updated) provides guidance for CPCs all the way back to z890 and will soon contain the new recommendations.
- For much more information on this topic, as well as tips about fine-tuning, refer to **Kathy Walsh's *Understanding LPAR Controls for Better Performance*** session [27021](#).
 - Also see related APAR [OA57270](#).

CICS Liberty High CPU APAR

- CICS APAR [PH20006](#) (still **OPEN**) addresses a situation whereby CICS automatically enabled some new tracing options provided in WebSphere Liberty
 - *“After migrating to Liberty 19.0.0.3 CICS experiences an increase in CPU consumption. Health Center data shows that method `org.eclipse.osgi.internal.log.LoggerImpl.getLocation()` is consuming a large **(50%+)** amount of the CPU cycles of those sampled.”*
 - CICS was moved to Liberty 19.0.0.3 by APAR [PH09600](#), delivered in July/Sept 2019.
- The APAR text provides a temporary workaround (manual update to server.xml file) until the CICS PTF is provided.
- Thanks to **Dave Follis** for help with this.

zIIPs, HiperDispatch, and Db2

- In our customer performance reviews, we frequently find very finely-tuned LPAR CP weights like 346, 297, 275, 32, 27, and 23. And the same LPARs will have zIIP weights of 10, 10, 10, 10, 10, and 10!
 - We *rarely* see Vertical High zIIPs.
- However, in every release, Db2 is making more and more of its code zIIP-eligible.
- The combination of lots of zIIP-eligible Db2 work and no VH zIIP engines is becoming a more common cause of Db2 performance issues:
 - The Managing Db2 Performance book explicitly calls out (in an ‘Important’ box!) the importance of having VH zIIPs available to Db2 if the performance/availability of that Db2 is important.
 - To reinforce this message, a new Health Check ([OA58654](#)) is on the way that will complain if it finds that the LPAR does not have at least one VH zIIP.
- The message – zIIPs ARE CHEAP, this is *not* the place to scrimp!
- For more info, refer to [Db2 Performance Redbook](#) and [User Experience](#) in TL 19-4.

'Free' zIIPs, zPDT, and z/OSMF

For ISVs

- Starting with zPDT GA8, zPDT provides the ability to have free zIIP engines, in addition to whatever number of general purpose CPs you are licensed for (limited by the number of cores in your PC).
- Depending on the underlying **PC**, a fully-configured z/OSMF can take > 20 minutes to start.
- So ~~we~~ I decided that adding a zIIP might help, but couldn't hurt.
- **WRONG!** The startup time increased from 25 minutes to over 1 hour!
- Why? The WLM policy that is provided with ADCD defaults the IZUSVR1 address space to a Discretionary Service Class. zIIP processors will not issue a Needs Help signal for discretionary work. So our 3 CPs were twiddling their thumbs, while our 1 zIIP ran at a solid 100%, processing nearly all the work that was previously handled by our 3 CPs.
- The lesson – zPDT free zIIPs are fine, but beware the use of discretionary service classes for zIIP-eligible work.

FICON End-to-End Encryption

- The IBM z15 announcement included a Statement of Direction for End-to-End encryption support on FICON channels.
- That support is available now (as of Feb 27):
 - Formally announced in IBM announcement letter [120-013](#) on January 14, 2020.
 - Only available on z15
 - Requires Endpoint Security Enablement (feature code 1146), and CPACF enablement (FC3863)
 - Requires the latest FICON Express 16SA+ adapters for encryption and authentication
 - Although authentication will be supported on the FICON Express 16S+ adapters (introduced with z14 CPC).
 - The only supported DASD are the recently-announced IBM DS8900F.
 - Supported in z/OS 2.2/2.3/2.4 with APAR [OA56294](#).
- Note that zHyperLinks do NOT support End-to-End Encryption.

DFSMSdss Tips

- DFSMSdss standalone restore does NOT support restore from full volume dumps created with COMPRESS, HWCOMPRESS, or ZCOMPRESS options.
 - This is currently not documented, but [OA58859](#) will update DSS manual with this information.
- In z/OS 1.12, DFSMSdss made changes to improve the efficiency of logical data set dumps to tape. However, those changes did not apply to Extended Format data sets – this results in those data sets having 5x as many write I/Os as non-EF data sets.
 - New Function APAR [OA58019](#) extends this enhancement to **Version 2** format single-stripe Extended Format data sets.
- Thanks to **Rob Gensler** for this information. If you are a DFSMSdss user, check out Rob's Session [26800](#) for this and other valuable information.
- And ALWAYS check out **Barb McDonald's** information-packed "[What's New in DFSMS](#)" session for a list of the latest enhancements to DFSMS.

zWIC and zWIN

- IBM Announcement Letter [220-032](#) announced a new chargeable z/OS feature called z Workload Interaction Correlator.
- This product is based on the existing High Frequency Throughput Statistics (SMF 98) function, but provides an infrastructure that can be used by other z/OS components and other products.
 - The only currently-announced z/OS exploiter is Supervisor – that is the support that was delivered in z/OS 2.2. We assume that other z/OS components will be added in the future.
- Information is gathered at 5-second intervals, providing visibility of problems or relationships that disappear in a typical 15-minute SMF/RMF interval.
- Its GA date is March 20, 2020.
 - The z/OS function will be available for z/OS 2.3 and 2.4 via APAR [OA56175](#).
 - It will only be available on z14 or later.
 - The Correlator is a chargeable z/OS feature, so you will need to discuss with IBM and presumably update your IFAPRDxx member.
 - IMS Support will be shipped by APAR [PH15072](#).
 - There will also be CICS support, but we don't have the APAR number yet.

Recommended HFTSINTVL is 5 Seconds

zWIC and zWIN

- zWIC provides the data gathering infrastructure. The analysis and presentation of that information will be provided by another (chargeable (IPLA)) product called z Workload Interaction Navigator (zWIN) – 5698-WKN.
 - Announced on Feb 25, 2020 in IBM US Announcement Letter [220-100](#).
- **zWIN requires Zowe.**
- Also planned to be available on March 20, 2020.
- Existing HFTS SMF Records have already proved valuable in investigating issues that disappear in a normal 15-minute SMF interval.

Quick Links to z/OS Announcement Letters

- [z/OS 2.3 Announcement, July 17, 2017.](#)
- [z/OS 2.3 Enhancements, November 21, 2017.](#)
- [z/OS 2.3 Enhancements, March 6, 2018.](#)
- [z/OS 2.3 Enhancements, May 15, 2018.](#)
- [z/OS 2.3 Enhancements, August 7, 2018.](#)
- [z/OS 2.3 Enhancements, November 13, 2018.](#)
- [z/OS 2.4 Preview, February 26, 2019.](#)
- [z/OS 2.3 Enhancements, March 5, 2019.](#)
- [z/OS 2.3 Enhancements, April 23, 2019.](#)
- [z/OS 2.4 Announcement Letter, July 23, 2019.](#)
- [z/OS 2.4 Enhancements, December 10, 2019.](#)

Thank You!

- If you have any questions, suggestions, comments, or general abuse, please email us at technical@watsonwalker.com
- Have a safe trip home, thank you for coming, and we hope to see you in Boston in August. Enjoy your summer!
- Please complete the online evaluation!



Thanks!!!

