



Vertiv™ Knürr  
INR Network Rack  
INR Server Rack

Specifications & Accessories



## **Vertiv™**

Vertiv designs, builds and services mission critical technologies that enable the vital applications for data centers, communication networks, and commercial and industrial environments. We support today's growing mobile and cloud computing markets with our portfolio of power, thermal, infrastructure management products, software and solutions, all complemented by our global service network. Bringing together global reach and local knowledge, and our decades-long heritage including brands like ASCO®, Chloride®, Liebert®, NetSure™ and Trellis™, our team of experts is ready to take on your most complex challenges, creating solutions that keep your systems running—and your business moving. Together, we're building the future of a world where critical technologies always work.

*YOUR VISION, OUR PASSION.*

**VertivCo.com**





## Vertiv™ Knürr INR Network Rack

The standard Vertiv™ Knürr INR Network Rack network rack features:



### Intelligent Design

Intelligent Design - The preassembled Vertiv Knürr INR Network Rack is easily adaptable to buildings with restricted access, allowing for an easy disassembly in less than 30 minutes. Its intelligent design and modularity make it the perfect solution for different applications. Vertiv Knürr INR Network Rack can alternatively be shipped flat packed.



### Easy Access

Vertically separated side panels provide easy handling and fast, simple access to installed equipment.



### Load Capacity

The stable 19" frame allows for loads of up to 800 kg to be installed.



### Flexible Cabling

Frameless architecture eliminates the need for cable threading allowing for optimal cable management.



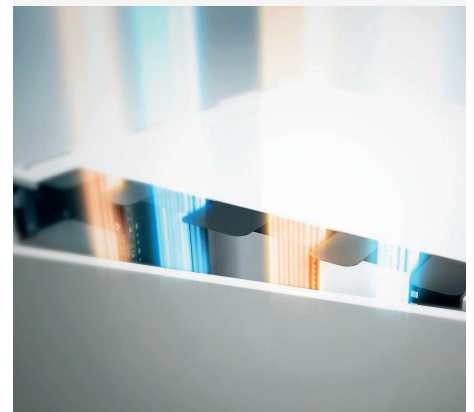
### Tool-less Installation

No need for tools when installing Rack-PDU MPH2, MPE and vertical side panels.

### Vertiv Knürr INR Network Rack

New modular rack enclosure optimized for fast assembly, easy installation and simplified cabling.

Vertiv's new Vertiv Knürr INR Network Rack is designed to meet your LAN rack enclosure needs, offering all of the advantages of an easy to install and cost-effective modular solution. This modular rack enclosure offers stability with an 800 kg load carrying capacity. Furthermore, its intelligent design makes it easy to dismount and relocate wherever needed.





## Flexible Cabling and Fast Assembly

### • Flexible Cabling

The 800 mm wide universal top cover features cable entry points at the front, rear and sides for flexible and simplified cable management. Additional side openings allow cables to be easily routed between the 19" level and side panel. Brush strips for sealing the cable entry points are available as accessories.

### • Ventilation

The opening in the top cover used to install a CoolBlast® ventilation unit can be removed at any point. This allows a 3-fold thermostatically regulated or RPM-regulated CoolBlast to be installed. A fan guard can also be installed above the CoolBlast ventilation unit.

### • Fast Assembly

Vertiv™ Knürr INR Network Rack comprises only a small number of parts and identical screw connections, allowing fast and easy assembly and disassembly while providing a high degree of stability.

### • Load Rating

Vertiv Knürr INR Network Rack features a stable 19" frame that can securely carry loads up to 800 kg. A 12.5 mm grid in the front jumpering area and the insertion depth area allows 19" frames to be adapted to suit customers' requirements.

### • Easy Access

Side panels can be easily mounted and locked without using tools. Front and rear doors feature same closure types. Racks deeper than 1,000 mm have side panels formed by two parts ensuring optimum vertical access and minimum packing volume (800 mm flat pack maximum width).

### • Technical Details

- 19" LAN rack featuring IP20 protection class
- Steel construction design with removable side panels
- Glass door at the front and single steel sheet door at the back
- Special 19" profiles for mounting all standard 19" components
- Large floor clearance
- Cable entry via bottom and top
- Break-out openings for cable entry and fans are positioned in the top cover of the InstaRack Server.

### • Rack PDUs

All rack PDUs and MPH2™ in particular can be easily and securely integrated into the Vertiv Knürr INR Network Rack to create more space for fixtures.

### • Rack Base

Vertiv Knürr INR Network Rack features an open base, guaranteeing easy cable management. The base can be sealed using an additional cover. Cabling can be run either in front of or behind the 19" unit.

### • Leveling Feet, Castors

The LAN rack comes with leveling feet which can also be fitted with castors (accessories).

### • Grounding

Grounding is available as an accessory and can be ordered if required. The grounding is installed safely in compliance with the applicable standard.

### • Delivery

- Two 19" frames with a hole grid
- Four depth braces
- Eight 19" brackets
- Two side panels for 800 mm depth and four two-piece side panels for 1,000 mm depth
- A glass door at the front
- A single steel sheet door at the back
- A top cover with perforations for cable entry and CoolBlast unit
- Assembly instructions enclosed.

### • Accessories

- Brush strip for break-outs
- Base plate
- Castors
- Rack coupling chains
- C profile rails
- Base support for roof cabling.

### • Color

Visible surfaces, linings, 19" frame, depth braces and 19" brackets are painted in RAL7035 light gray.

### • Material/Finish

- Basic rack, depth braces, doors and side panels: powder-coated sheet metal
- 19" profiles, 2.0 mm sheet metal, coated.

### • Tests

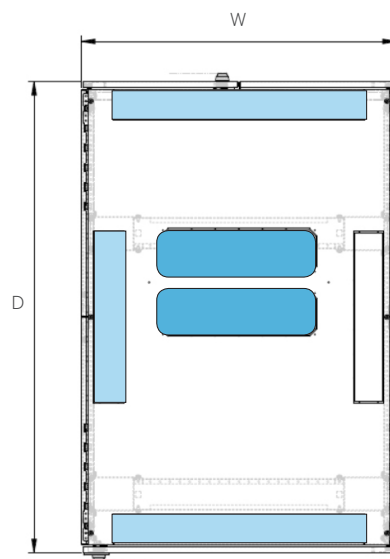
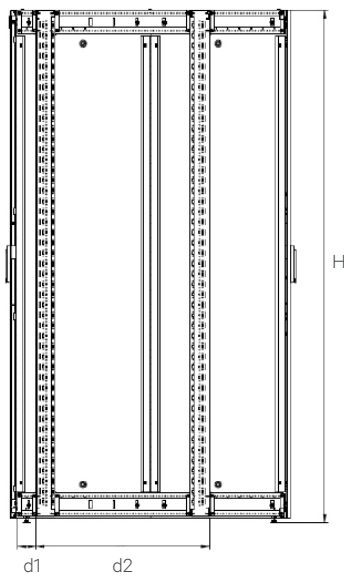
Safety grounding in compliance with VDE 0100 T 540.

## Vertiv™ Knürr INR Network Rack Specifications

W	H	D	U	d1	d2	Gross Weight	Description	Part no.	UP
800	2000	800	42			132 kg	Vertiv Knürr INR Network Rack - flat packed	011500041006	1 unit
800	2000	1000	42			137 kg	Vertiv Knürr INR Network Rack - flat packed	011500041007	1 unit
800	2200	800	47			137 kg	Vertiv Knürr INR Network Rack - flat packed	011500041011	1 unit
800	2200	1000	47			145 kg	Vertiv Knürr INR Network Rack - flat packed	011500041012	1 unit
800	2000	800	42	78	544,5	115 kg	Vertiv Knürr INR Network Rack - assembled	011501041006	1 unit
800	2000	1000	42	78	744,5	120 kg	Vertiv Knürr INR Network Rack - assembled	011501041007	1 unit
800	2200	800	47	78	544,5	120 kg	Vertiv Knürr INR Network Rack - assembled	011501041011	1 unit
800	2200	1000	47	78	744,5	128 kg	Vertiv Knürr INR Network Rack - assembled	011501041012	1 unit

d1) Jumpering space (standard depth, can be adjusted in 12,5 mm steps)

d2) Useful depth (standard depth, can be adjusted in 12,5 mm steps)



- Removable parts for brush strips.
- Removable parts for fan units.



## Vertiv™ Knürr INR Server Rack

The standard Vertiv™ Knürr INR Server Rack features:



### Intelligent Design

The preassembled Vertiv Knürr INR Server Rack is easily adaptable to buildings with restricted access, allowing for an easy disassembly in less than 30 minutes.

Its intelligent design and modularity make it the perfect solution for different applications. Vertiv Knürr INR Server Rack can alternatively be shipped flat packed.



### Easy Access

Vertically separated side panels provide fast and simple access to installed server equipment.



### Load Capacity

The stable 19" frame allows for loads of up to 800 kg to be installed.



### Optimized Airflow

Its large perforated surface optimizes air ventilation for single components either in a single rack or in rows of racks. Maximum air flow of 83%.



### Flexible Cabling

Frameless architecture eliminates the need for cable threading allowing for optimal cable management.



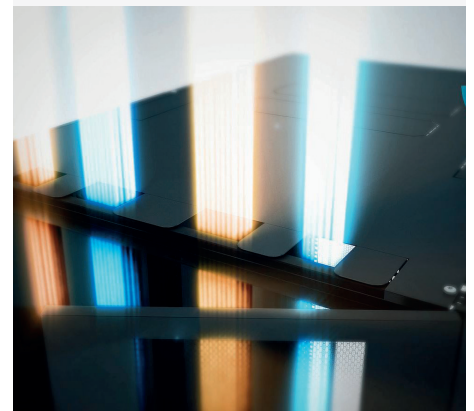
### Tool-less Installation

No need for tools when installing Rack-PDU MPH2, MPE and vertical side panels.

### Modular Vertiv Knürr INR Server Rack:

New modular rack enclosure optimized for fast assembly, easy installation and simplified cabling and maximum air flow circulation.

Vertiv's new Vertiv Knürr INR Server Rack is designed to meet your server rack enclosure needs, offering all of the advantages of an easy to install and cost-effective modular solution. This modular rack enclosure offers stability with an 800 kg load carrying capacity, with perforated front and rear doors for maximum air flow. Furthermore, its intelligent design makes it easy to dismount and relocate wherever needed.







## Flexible Cabling and Fast Assembly

- **Flexible Cabling**

The 800 mm wide universal top cover features cable entry points at the front, rear and sides for flexible and simplified cable management. Additional side openings allow cables to be easily routed between the 19" level and side panel. Brush strips for sealing the cable entry points are available as accessories.

- **Ventilation**

The opening in the top cover used to install a CoolBlast® ventilation unit can be removed at any point. This allows a 3-fold thermostatically regulated or RPM-regulated CoolBlast to be installed. A fan guard can also be installed above the CoolBlast ventilation unit.

- **Fast Assembly**

Vertiv™ Knürr INR Server Rack comprises only a small number of parts and identical screw connections, allowing fast and easy assembly and disassembly while providing a high degree of stability.

- **Load Rating**

Vertiv Knürr INR Server Rack features a stable 19" frame that can securely carry loads up to 800 kg. A 12.5 mm grid in the front jumpering area and insertion depth area allows 19" frames to be adapted to suit customers' requirements.

- **Easy Access**

Side panels can be easily mounted and locked without using tools. Front and rear doors feature same closure types. Racks deeper than 1,000 mm have side panels formed by two parts ensuring optimum vertical access and minimum packing volume (800 mm flat pack maximum width).

- **Technical Details**

- 19" server rack featuring IP20 protection class
- Steel construction design with removable side panels
- Perforated single-leaf steel sheet door at the front and perforated double-leaf steel sheet door at the back
- Special 19" profiles for mounting all standard 19" components
- Large floor clearance
- Cable entry via bottom and top
- Break-out openings for cable entry and fans are positioned in the top cover of the InstaRack Server.

- **Rack PDUs**

All rack PDUs and MPH2™ in particular can be easily and securely integrated into the Vertiv Knürr INR Server Rack to create more space for fixtures.

- **Rack Base**

Vertiv Knürr INR Server Rack features an open base, guaranteeing maximum cooling air flow and easy cable management. The base can be sealed using an additional cover. Cabling can be run either in front of or behind the 19" unit.

- **Leveling Feet, Castors**

The server rack comes with leveling feet which can also be fitted with castors (accessories).

- **InstaRack Air Partition**

The cold/warm area partition can be rapidly and easily fitted into the Vertiv Knürr INR Server Rack at a later date. The partition is available either with enclosed lateral screens or with 3 x 1 HE break-outs with a cover. The partition is sealed to the side panel using a foam element. The air partition is fitted to the 19" frame and can be pushed lower at 12.5 mm intervals.

- **Grounding**

Grounding is available as an accessory and can be ordered if required. Grounding is installed safely in compliance with the applicable standard.

- **Delivery**

- Two 19" frames with a hole grid
- Four depth braces
- Eight 19" brackets (on 800 width model)
- Four two-piece side panels (for 1,000 mm depth and greater)
- A perforated single-leaf steel sheet door at the front
- A perforated double-leaf steel sheet door at the back
- A top cover with perforations for cable entry and CoolBlast unit
- Assembly instructions included.

- **Accessories**

- Brush strip for break-outs
- Base plate
- Castors
- Air partition
- Rack coupling chains
- C profile rails
- Base support for roof cabling.

- **Color**

Visible surfaces, linings, 19" frame, depth braces and 19" brackets are painted in RAL7021 dark gray.

- **Material/Finish**

- Basic rack, depth braces, doors and side panels: powder-coated sheet metal
- 19" profiles, 2.0 mm sheet metal, powder-coated.

- **Tests**

Safety grounding in compliance with VDE 0100 T 540.

## Vertiv™ Knürr INR Server Rack Specifications

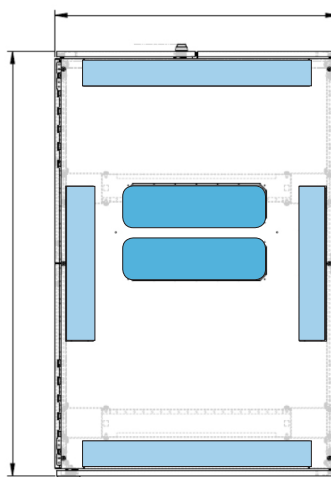
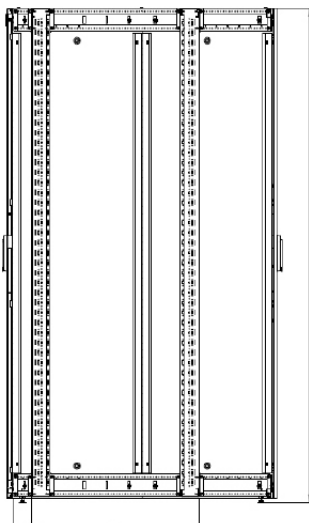
Vertiv™ Knürr INR Server Rack Type	Gross Dimensions (height x width x depth in mm incl. pallet)	Gross Weight
4 x type 1 racks on pallet	2260 x 2270 x 900	500 kg
4 x type 2 racks on pallet	2260 x 2270 x 900	510 kg
4 x type 3 racks on pallet	2260 x 2270 x 900	530 kg
4 x type 4 racks on pallet	2260 x 2270 x 900	700 kg
4 x type 5 racks on pallet	2260 x 2270 x 900	710 kg
4 x type 6 racks on pallet	2260 x 2270 x 900	730 kg
4 x type 7 racks on pallet	2260 x 2270 x 900	460 kg
4 x type 8 racks on pallet	2260 x 2270 x 900	470 kg
4 x type 9 racks on pallet	2260 x 2270 x 900	490 kg
4 x type 10 racks on pallet	2260 x 2270 x 900	660 kg
4 x type 11 racks on pallet	2260 x 2270 x 900	670 kg
4 x type 12 racks on pallet	2260 x 2270 x 900	690 kg

Vertiv™ Knürr INR Server Rack Type Single Carton Without Pallet	Gross Dimensions (height x width x depth in mm incl. pallet)	Gross Weight
Type 1 racks	530 x 2230 x 860	119 kg
Type 2 racks	530 x 2230 x 860	122 kg
Type 3 racks	530 x 2230 x 860	127 kg
Type 4 racks	530 x 2230 x 860	169 kg
Type 5 racks	530 x 2230 x 860	172 kg
Type 6 racks	530 x 2230 x 860	177 kg
Type 7 racks	530 x 2230 x 860	109 kg
Type 8 racks	530 x 2230 x 860	112 kg
Type 9 racks	530 x 2230 x 860	117 kg
Type 10 racks	530 x 2230 x 860	159 kg
Type 11 racks	530 x 2230 x 860	162 kg
Type 12 racks	530 x 2230 x 860	167 kg

W	H	D	U	d1	d2	Gross Weight	Description	Part no.	UP
600	2000	1000	42			119 kg	Vertiv Knürr INR Server Rack - flat packed	011500078007	1 unit
600	2000	1100	42			122 kg	Vertiv Knürr INR Server Rack - flat packed	011500078008	1 unit
600	2000	1200	42			127 kg	Vertiv Knürr INR Server Rack - flat packed	011500078009	1 unit
600	2200	1000	47			169 kg	Vertiv Knürr INR Server Rack - flat packed	011500078012	1 unit
600	2200	1100	47			172 kg	Vertiv Knürr INR Server Rack - flat packed	011500078013	1 unit
600	2200	1200	47			177 kg	Vertiv Knürr INR Server Rack - flat packed	011500078014	1 unit
800	2000	1000	42			109 kg	Vertiv Knürr INR Server Rack - flat packed	011500088007	1 unit
800	2000	1100	42			112 kg	Vertiv Knürr INR Server Rack - flat packed	011500088008	1 unit
800	2000	1200	42			117 kg	Vertiv Knürr INR Server Rack - flat packed	011500088009	1 unit
800	2200	1000	47			159 kg	Vertiv Knürr INR Server Rack - flat packed	011500088012	1 unit
800	2200	1100	47			162 kg	Vertiv Knürr INR Server Rack - flat packed	011500088013	1 unit
800	2200	1200	47			167 kg	Vertiv Knürr INR Server Rack - flat packed	011500088014	1 unit
600	2000	1000	42	78	744,5	92 kg	Vertiv Knürr INR Server Rack - assembled	011501078007	1 unit
600	2000	1100	42	78	744,5	95 kg	Vertiv Knürr INR Server Rack - assembled	011501078008	1 unit
600	2000	1200	42	78	744,5	100 kg	Vertiv Knürr INR Server Rack - assembled	011501078009	1 unit
600	2200	1000	47	78	744,5	142 kg	Vertiv Knürr INR Server Rack - assembled	011501078012	1 unit
600	2200	1100	47	78	744,5	145 kg	Vertiv Knürr INR Server Rack - assembled	011501078013	1 unit
600	2200	1200	47	78	744,5	150 kg	Vertiv Knürr INR Server Rack - assembled	011501078014	1 unit
800	2000	1000	42	78	744,5	102 kg	Vertiv Knürr INR Server Rack - assembled	011501088007	1 unit
800	2000	1100	42	78	744,5	105 kg	Vertiv Knürr INR Server Rack - assembled	011501088008	1 unit
800	2000	1200	42	78	744,5	110 kg	Vertiv Knürr INR Server Rack - assembled	011501088009	1 unit
800	2200	1000	47	78	744,5	152 kg	Vertiv Knürr INR Server Rack - assembled	011501088012	1 unit
800	2200	1100	47	78	744,5	155 kg	Vertiv Knürr INR Server Rack - assembled	011501088013	1 unit
800	2200	1200	47	78	744,5	160 kg	Vertiv Knürr INR Server Rack - assembled	011501088014	1 unit

d1) Jumpering space (standard depth, can be adjusted in 12,5 mm steps)

d2) Useful depth (standard depth, can be adjusted in 12,5 mm steps)

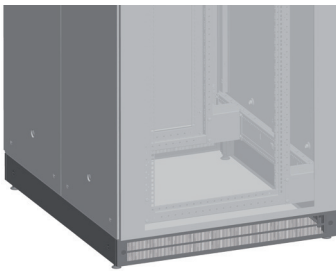
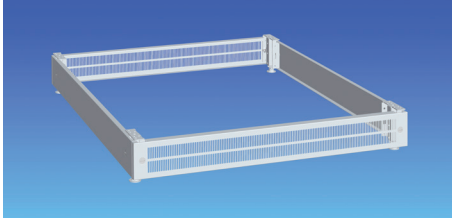


- Removable parts for brush strips.
- Removable parts for fan units.

## Accessories

## Technical Specifications

### InstaRack Plinth



- Stationary
- Cable entry possible from all sides
- Front and rear panels with vent slots.

#### Includes:

- 4 plinth corners
- 2 plinth panels with slots
- 2 plinth panels closed on the side
- Mounting material.

#### Load rating:

- 4000 N static.

#### Material/finish:

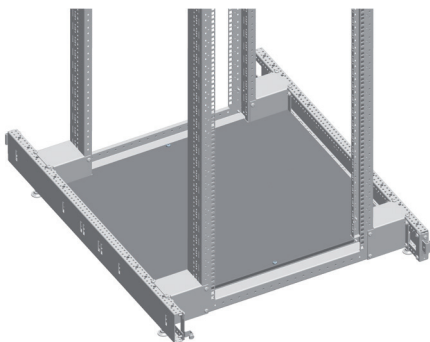
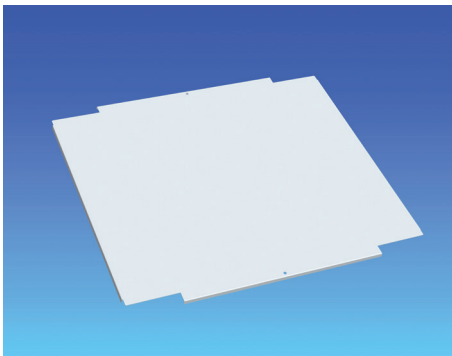
- Steel sheet, powder-coated texture,
- Color code: 1 = RAL 7035, light grey
- Color code: 8 = RAL 7021, dark-grey.

#### Supplied as:

- 1 piece.

W	H	D	Rack type	Part No. (X=insert color code)	UP
800	100	800	InstaRack	01150041X005	1 piece
800	100	1000	InstaRack	01150041X006	1 piece
800	100	1100	InstaRack	01150041X007	1 piece
800	100	1200	InstaRack	01150041X008	1 piece

### InstaRack Bottom Cover closed



- For covering the base of the rack.

#### Material/finish:

- Steel sheet 1 mm, zinc passivated.

#### Supplied as:

- 1 piece.

#### Includes:

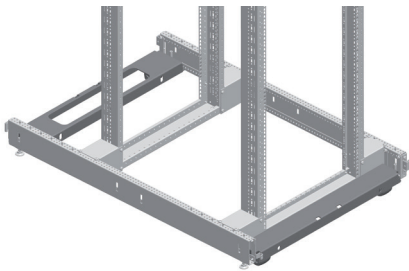
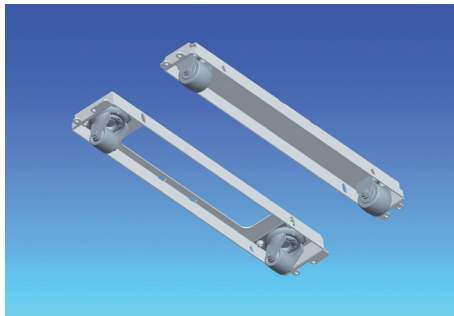
- Bottom cover, mounting material.

*W	d	Rack type	Rack depth	Part No.	UP
600	544.5	InstaRack	800	011500330001	1 piece
600	644.5	InstaRack	1000	011500330002	1 piece
600	744.5	InstaRack	1100-1200	011500330003	1 piece
800	544.5	InstaRack	800	011500330004	1 piece
800	644.5	InstaRack	1000	011500330005	1 piece
800	744.5	InstaRack	1100-1200	011500330006	1 piece

\*Dimensions in mm: W = Width · H = Height · D = Depth · h = installation height · d = useful depth · L = Length · X = insert color code · HU = standardized height unit (1 HU = 44.45 mm).

**Accessories** **Technical Specifications**

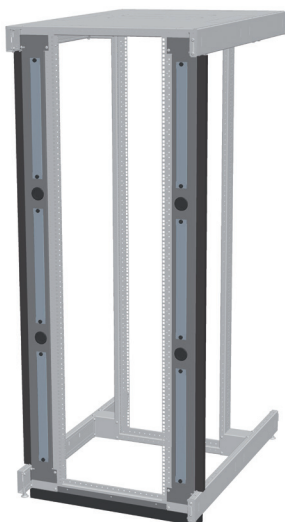
**InstaRack cross-beam with casters**



- On wheels: also includes two caster receptors with casters and integrated cable insertion with use of this castors, the load capacity of the rack is only 300 kg!
- **Material/surface:**
  - Steel sheet
  - Powder-coated, structure RAL 7021.
- **Includes:**
  - 1 set of cross-beam with casters
  - Mounting material.
- **How supplied:**
  - In sets
  - 1 Set of 2 pieces.
- **Remark:**
  - Rack Load capacity with mobile castors: 300 kg

*W	Rack type	Part No.	UP
600	InstaRack	011500608001	1 Set of 2 pieces
800	InstaRack	011500608002	1 Set of 2 pieces

**InstaRack air partitioning**



- Quick and easy retrofitting of hot/cold area separation within the rack
- Panels on sides each have two slots for cable feed-through
- 3 x 1 HU slots, covered with panels
- Screwed on the sides of the 19" profiles
- Sealing with lateral parts or with same plane in the cabinet placed side-by-side using foam elements; depth can thus be slightly adjusted.
- **Standard inclusion:**
  - Steel sheet
  - Diagonal struts: powder-coated RAL 7021 black grey, structure.
- **Includes:**
  - 2 lateral panels
  - 1 panel on base
  - 1 foam material on base
  - 2 vertical foam materials
  - Mounting material.
- **How supplied:**
  - In sets
  - 1 Set.

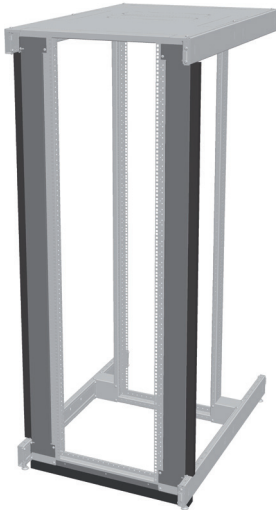
*W	H	Version	Rack type	Part No.	UP
800	2000	3 x 1 HU slot	InstaRack	011500628001	1 Set
800	2200	3 x 1 HU slot	InstaRack	011500628002	1 Set

\*Dimensions in mm: W = Width · H = Height · D = Depth · h = installation height · d = useful depth · L = Length · X = insert color code · HU = standardized height unit (1 HU = 44.45 mm).

## Accessories

## Technical Specifications

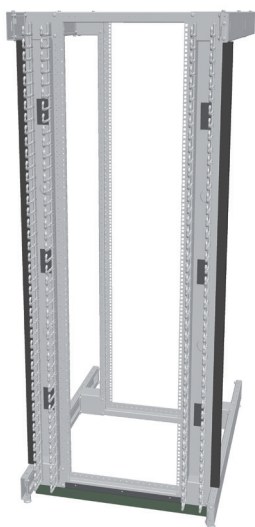
### Closed InstaRack air partitioning



- Quick and easy retrofitting of hot/cold area separation with in the rack
- Closed lateral panels
- Screwed on the sides of the 19" profiles
- Sealed with lateral parts or with same plane in the cabinet and placed side-by-side using foam elements; depth can thus be slightly adjusted.
- **Material/surface:**
  - Steel sheet
  - Diagonal struts: powder-coated RAL 7021 black grey, structure.
- **Supply schedule:**
  - 2 lateral panels (B800 only)
  - 2 vertical foam materials
  - 1 panel on base (for B800 only)
  - 1 foam material on base.
  - Mounting material.
- **How supplied:**
  - In sets
  - 1 Set.

*Wrack	Hrack	Version	Rack type	Part No.	UP
600	2000	Closed	InstaRack	011500648001	1 Set
800	2000	Closed	InstaRack	011500648002	1 Set
600	2000	Closed	InstaRack	011500648003	1 Set
800	2200	Closed	InstaRack	011500648004	1 Set

### Closed InstaRack air partitioning



- Compatible with InstaRack
- Separates hot/cold areas in side the cabinet
- Avoids hot spots (air recirculation).
- **Material/surface:**
  - Panel: 1.0 mm steel sheet
  - Part number end digit .8: powdercoated, RAL 7021, black grey, structure
  - Filling foam: polyurethane ether foam (UL94 HF-1).
- **Includes:**
  - 1 panel on base
  - 6 covers for cable feed-through
  - 2 foam materials, vertical
  - Mounting material.
- **How supplied:**
  - In sets
  - 1 Set of 2 pieces.

W	HU	Rack type	Part No.	UP
800	42	InstaRack	011500568001	1 Set of 2 pieces
800	42	InstaRack	011500568002	1 Set of 2 pieces

\*Dimensions in mm: W = Width · H = Height · D = Depth · h = installation height · d = useful depth · L = Length · X = insert color code · HU = standardized height unit (1 HU = 44,45 mm).

**Accessories** **Technical Specifications**

**InstaRack cable manager**



- Left and right versions (2 cable managers) supplied
  - Ideal for orderly guiding patch cables (copper conductors and optical fibers)
  - Retrofitting possible
  - Made for complete hot/cold partitioning
  - Cable fingers easy to mount (clip on)
  - Cables can be fed through the rear of the rack thanks to rubber grommets and slots
  - For mount depths of 145 mm and above.
- **Material/surface:**
    - Cable duct: steel sheet; 2.0 mm  
Part number end digit .8: powder-coated RAL 7021, black grey, structure
    - Cable fingers: polyamide (UL 94 V-0), black.
  - **Includes:**
    - 1 left cable duct
    - 1 right cable duct
    - 4 rows with cable fingers
    - 4 rubber grommets
    - Mounting material.
  - **How supplied:**
    - In pairs (cable fingers included loose)
    - 1 pair.

*W <sub>rack</sub>	H <sub>rack</sub>	Mount Depth	Rack type	Part No.	UP
800	2000	145 and above	InstaRack	011500558001	1 pair
800	2200	145 and above	InstaRack	011500558002	1 pair

**C-rail**



- For securing cables using bolt clamps or cable management strips
  - Space-saving installation with in the InstaRack.
- **Material/surface:**
    - Steel sheet 1.5 mm, galvanized.
  - **Includes:**
    - 4 C-rails
    - Mounting material.
  - **How supplied:**
    - In sets
    - 1 Set of 4 pieces.
- Note:**  
Please order bolt clamps, cable management strips or threaded plate at the same time.

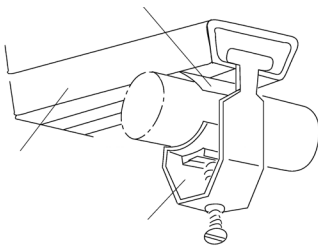
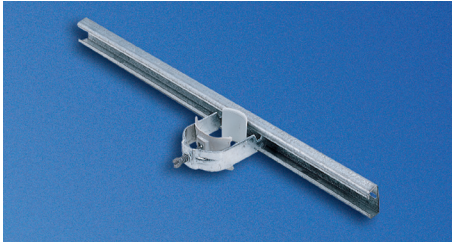
L	Rack type	Insertion Depth	Part No.	UP
380	InstaRack	544.5	011511317001	1 Set of 4 pieces
480	InstaRack	644.5	011511317002	1 Set of 4 pieces
580	InstaRack	744.5	011511317003	1 Set of 4 pieces

\*Dimensions in mm: W = Width · H = Height · D = Depth · h = installation height · d = useful depth · L = Length · X = insert color code · HU = standardized height unit (1 HU = 44.45 mm).

## Accessories

## Technical Specifications

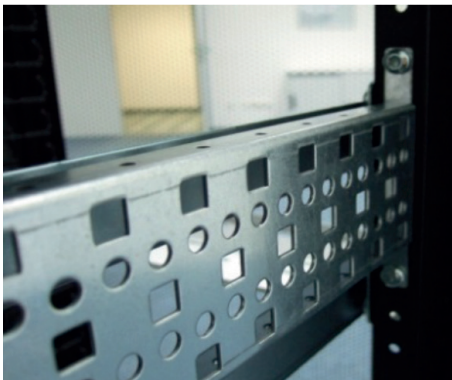
### Bolt clamp



- To release tension and guide individual cables and lines
- Clamping range: 12-52 mm.
- **Material/surface:**
  - Steel/plastic.
- **Includes:**
  - 25 bolt clampst
  - 25 counter troughs.
- **How supplied:**
  - In sets
  - 1 Set of 25 pieces.

Clamping Range	Rack type	Part No.	UP
12-16 mm	InstaRack	050401519	1 Set of 25 pieces
22-28 mm	InstaRack	050401549	1 Set of 25 pieces
46-52 mm	InstaRack	050401579	1 Set of 25 pieces

### Multifunctional brace



- For cable management with cable ties
- Provides universal securing options
- Holes for mounting caged nuts
- Installation between the 19" Frame front and rear side.
- **Material:**
  - Sheet steel, 1.5 mm.
- **Finish:**
  - Zinc-passivated.
- **Material:**
  - Sheet steel, 1.5 mm.
- **Standard inclusion:**
  - Set of 4 x multifunctional braces.
- **Delivery:**
  - 1 Set of 4 pieces.

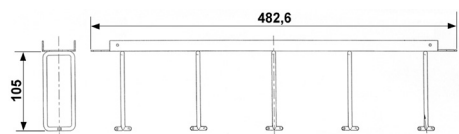
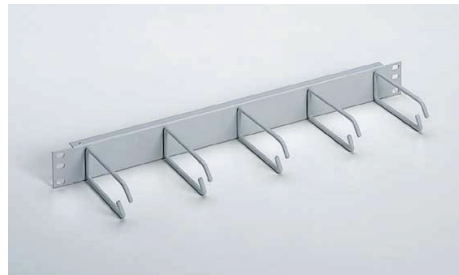
d	Rack type	Part No.	UP
544.5	InstaRack	011510489001	1 Set of 4 pieces
644.5	InstaRack	011510489002	1 Set of 4 pieces
744.5	InstaRack	011510489003	1 Set of 4 pieces

\*Dimensions in mm: W = Width · H = Height · D = Depth · h = installation height · d = useful depth · L = Length · X = insert color code · HU = standardized height unit (1 HU = 44.45 mm).



**Accessories** **Technical Specifications**

**Cable Routing Board, 1U**

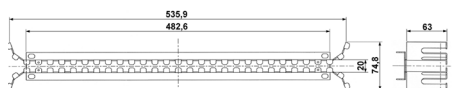


- For orderly cable routing
- For safe and secure copper and fiberglass cable routing.

- **Material/finish:**
  - Front panel, steel sheet 1.5 mm, powder-coated,  
Color code: 1 = RAL 7035, light grey  
Color code: 8 = RAL 7021, dark grey.
- **Includes:**
  - 19" Front panel
  - Cable routers.
- **Supplied as:**
  - Preassembled
  - 1 piece.

Description	Rack type	Part No. (X=insert color code)	UP
Cable routing board, 1U	InstaRack	01117144X	1 piece

**Fiber Optic Cable Routing Board, 1U**

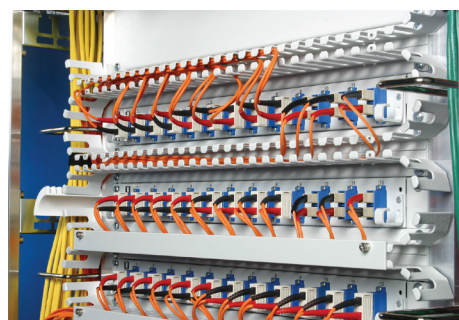


- For orderly cable routing
- For safe and secure fiberglass cable routing
- Optionally with cover panels to protect the cables as well as a labeling option.

- **Material/finish:**
  - Steel sheet 1.5 mm, powder-coated, texture,  
Color code: 1 = RAL 7035, light grey  
Color code: 8 = RAL 7021, dark grey.
- **Includes:**
  - Cable routing board.
- **Supplied as:**
  - 1 piece.

Description	Rack type	Part No.	UP
Fiber optic cable routing board, 1U	InstaRack	05040050X	1 piece

**Cover for Cable Routing Board**



- Cover for cable routing board.
- **Includes:**
  - Cover.
- **Supplied as:**
  - 1 piece.
- **Finish:**
  - Powder-coated,  
Color code: 1 = RAL 7035, light grey  
Color code: 8 = RAL 7021, dark grey.

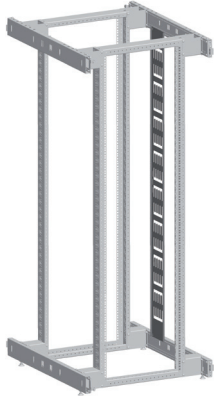
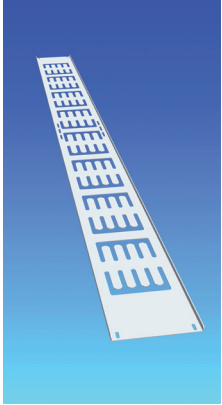
Description	Rack type	Part No. (X=insert color code)	UP
Cover for fiber optic cable routing board	InstaRack	05040051X	1 piece

\*Dimensions in mm: W = Width · H = Height · D = Depth · h = installation height · d = useful depth · L = Length · X = insert color code · HU = standardized height unit (1 HU = 44.45 mm).

## Accessories

## Technical Specifications

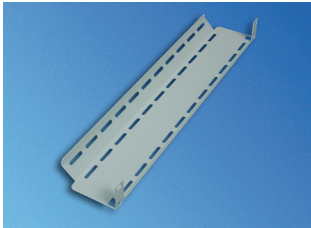
### Cable Tray



- For orderly cable management with in the rack
- Cable fixing possible using Velcro strips or cable ties.
- **Material/finish:**
  - Steel sheet 1.5 mm, zinc passivated, powder-coated, Color code: 8 = RAL 7021, dark grey.
- **Includes:**
  - Cable tray
  - Mounting material.
- **Supplied as:**
  - 1 piece.

*H	W	Rack type	Part No.	UP
2000	150	InstaRack	011511238001	1 piece
2200	150	InstaRack	011511238002	1 piece

### 19" Cable tray



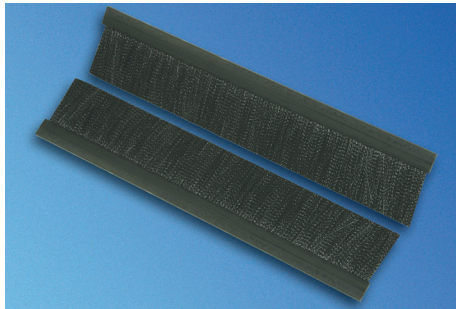
- For orderly cable management in front of the 19" front
- Cable fixing possible using Velcro strips or cable ties
- Mounting on front panels possible.
- **Material/finish:**
  - Sheet 1.5 mm, powder-coated, Color code: 1 = RAL 7035, light grey
  - Color code: 8 = RAL 7021, dark grey.
- **Includes:**
  - Cable tray.
- **Supplied as:**
  - 1 piece.

D	U	Rack type	Part No. (X=insert color code)	UP
100	1	InstaRack	05040055X	1 piece

\*Dimensions in mm: W = Width · H = Height · D = Depth · h = installation height · d = useful depth · L = Length · X = insert color code · HU = standardized height unit (1 HU = 44.45 mm).

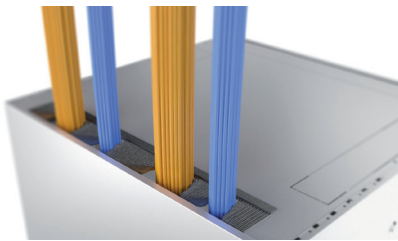
**Accessories** **Technical Specifications**

**Brush strip**

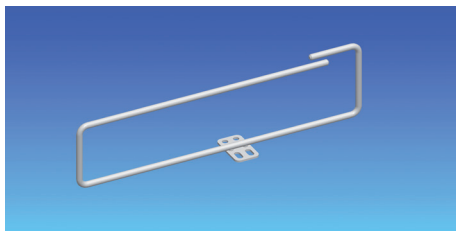


- Brush strip for top covers for flexible cable-entry.
- **Supplied:**
  - 1 piece.

*L	Rack type	Part No.	UP
436	InstaRack	011511299001	1 piece
636	InstaRack	011511299002	1 piece

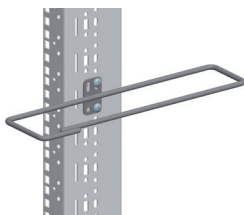


**Square Jumpering Bracket**



- For orderly cable management
- Open version, not threading
- Mounted on the external side of the 19" extrusion
- All installation positions available
- For large cable volumes.

- **Includes:**
  - 4 square jumpering brackets, mounting material.
- **Finish:**
  - Zinc-passivated.
- **Supplied as:**
  - 1 Set of 4 pieces.

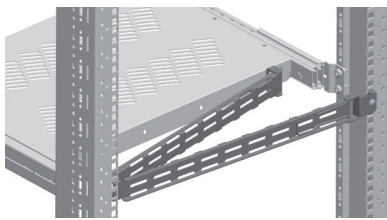
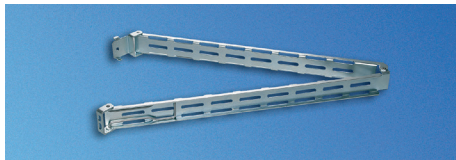


Description	Rack type	Part No.	UP
Square jumpering bracket	InstaRack	050402219	1 Set of 4 pieces

\*Dimensions in mm: W = Width · H = Height · D = Depth · h = installation height · d = useful depth · L = Length · X = insert color code · HU = standardized height unit (1 HU = 44.45 mm).

Accessories	Technical Specifications
-------------	--------------------------

## Cable Cantilever



- For easy mounting in rack/on the shelf; Rapid connection to and from the shelf or rack with a spring clip
- Guarantees defined and kink-free cable management
- Minimum space requirement behind the pushed-in shelves: 40 mm.

**Includes:**

- Cable cantilever girder, mounting material.

**Material/finish:**

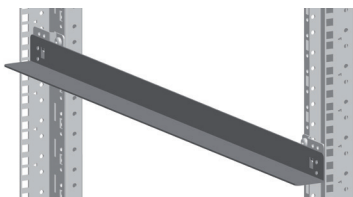
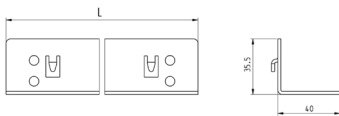
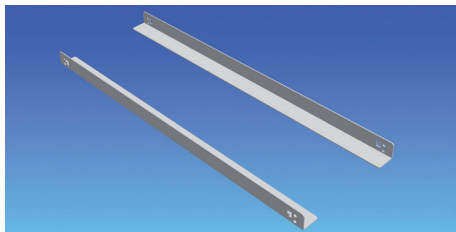
- Sheet steel 1.5 mm, zinc-passivated.

**Supplied as:**

- 1 piece.

Description	Rack type	Part No.	UP
Cable cantilever	InstaRack	011511270001	1 piece

## Hook-IN chassis runner



- For installation in 19" rack and enclosure
- Hang-ON for quick and easy mounting
- Can also be screwed for heavier load rating
- Can be screwed from the inside (use in rack suites)
- Height setting possible for various main section heights.

**Material/finish:**

- Steel sheet 2.0 mm, zinc passivated, blue chrome-plated.

**Includes:**

- Slot-in rails, mounting material.

**Supplied as:**

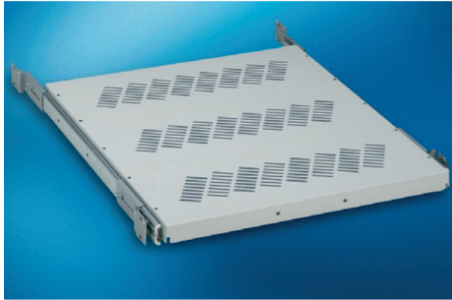
- 1 Set of 2 pieces.

*d	L	Rack type	Part No.	UP
544.5	515.5	InstaRack	011511287001	1 Set of 2 pieces
644.5	615.5	InstaRack	011511287002	1 Set of 2 pieces
744.5	715.5	InstaRack	011511287003	1 Set of 2 pieces

\*Dimensions in mm: W = Width · H = Height · D = Depth · h = installation height · d = useful depth · L = Length · X = insert color code · HU = standardized height unit (1 HU = 44.45 mm).

**Accessories** **Technical Specifications**

**19" retractable shelf**



- Integrated mounting holes, front and rear for handle or hinged cable routing
  - Perforated to optimize air supply
  - Locks in retracted position (friction lock); easy conversion to form lock with stop spring.
  - Quick separator for tool-less removal and decoupling of shelf board.
- **Material/finish:**
    - Sheet steel 1.0 mm, electroplated zinc, powder-coated texture.
  - **Color:**
    - Color code: 1 = RAL 7035, light grey
    - Color code: 8 = RAL 7021, dark-grey.
  - **Load rating:**
    - 500 N static per item.
- **Standard inclusion:**
    - 1 x pair of telescopic slides
    - 1 x shelf board
    - 1 x extension board (from L = 600)
    - 1 x Mounting kit.
  - **Delivery:**
    - In sets.
- Note:**  
Order requisite mounting adapter: P/N 011476409.

Useful depth	For Rack depth	WxL	Retractable	Part No. (X=insert colr code)	UP
544.5	800 mm	430x360 mm	Partially	<b>01102042X001</b>	Set of 1 unit
644.5	1000 mm	430x560 mm	Partially	<b>01102043X001</b>	Set of 1 unit
744.5	1100-1200 mm	430x560 mm	Partially	<b>01102043X001</b>	Set of 1 unit
744.5	1200 mm	430x560 mm	Fully	<b>01102041X001</b>	Set of 1 unit

**19" shelf fixed**



- Integrated mounting holes; front and rear for handle or hinged cable routing
  - Perforated to optimize air supply.
- **Material/finish:**
    - Sheet steel 1.0 mm, electroplated zinc, powder-coated texture.
  - **Color:**
    - Color code: 1 = RAL 7035, light grey
    - Color code: 8 = RAL 7021, dark-grey.
  - **Load rating:**
    - 500 N static per item.
- **Standard inclusion:**
    - 2 x mounting rails, incl. mounting bracket
    - 1 x shelf board
    - 1 x extension board (from L = 600)
    - 1 x Mounting kit.
  - **Delivery:**
    - In sets.
- Note:**  
Please order requisite mounting adapter: P/N 011476409.

Useful depth	For Rack depth	WxL	Part No. (X=insert colr code)	UP
544.5	800 mm	430x300 mm	<b>01102002X</b>	Set of 1 unit
544.5; 644.5	1000 mm	430x500 mm	<b>01102003X</b>	Set of 1 unit
644.5; 744.5	1100-1200 mm	430x600 mm	<b>01102004X</b>	Set of 1 unit
744.5	1200 mm	430x600 mm	<b>01102005X</b>	Set of 1 unit

\*Dimensions in mm: W = Width · H = Height · D = Depth · h = installation height · d = useful depth · L = Length · X = insert color code · HU = standardized height unit (1 HU = 44.45 mm).

## Accessories

## Technical Specifications

### Mounting Adapter



- For mounting standard Knürr components (storage shelves, drawers, chassis rails, keyboard tray, etc.) in 19" installation space.
- **Material/finish:**
  - Steel sheet, zinc-passivated 2.5 mm.
- **Standard inclusion:**
  - 4 x adapters.

Description	Part No.	UP
Mounting adapter for 19" server extrusion	011476409	Set for one shelf or one pair of chassis runners
		Set of 4 units

### Mounting Set Cage Nuts



- Front panel mounting set; mounting holes, M5/plate, 2.5 mm
- For securing 19" front panels and 19" components.
- **Standard inclusion:**
  - Type 1:
    - 50 x cage nuts M5 /plate, 2.5 mm
    - 50 x oval-head screws, Z-form, M5 x 16.
  - Type 2:
    - 50 x cage nuts M5 /plate, 2.5 mm
    - 50 x countersunk screws, M5 x 16
    - 50 x rosettes.
- **Delivery:**
  - In sets.

Description	Part No.	UP
Type 1: Z-form screw	050413379	1 set
Type 2: screw + rosette	050413429	1 set

### InstaRack sheettracs M6x13



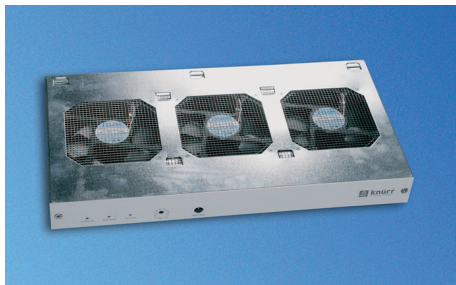
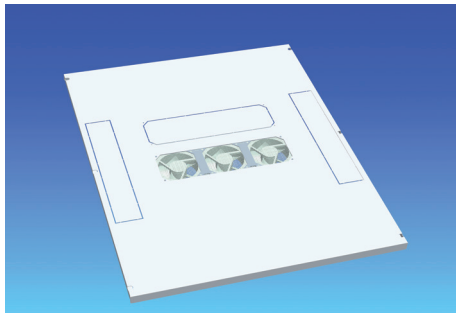
- **Standard inclusion:**
  - 50 x SHEETtracs M6x13.
- **Delivery:**
  - 1 Set.

Description	Part No.	UP
Sheettracs M6x13	011510670001	1 Set

\*Dimensions in mm: W = Width · H = Height · D = Depth · h = installation height · d = useful depth · L = Length · X = insert color code · HU = standardized height unit (1 HU = 44.45 mm).

Accessories	Technical Specifications
-------------	--------------------------

### CoolBlast® Fan Unit for Roof Installation thermostat controlled



- For forced rack cooling
- Suitable for installation at any time in the InstaRack top
- 115 VAC versions up on request
- Fan function (ON/OFF) thermostat controlled, setting from 0° to +60° C.
- **Material:**
  - Housing: Sheet, high-grade steel grid.
- **Finish:**
  - Zinc-passivated.
- **Approvals:**
  - CE symbol in accordance with Low Voltage Directive, 73/23/EEC, EMC directive 89/366/EEC.
- **Includes:**
  - 1 CoolBlast fan unit, 1 mains cable, 3 m with safety plug (230 VAC), mounting material, operating instructions.
- **How supplied:**
  - Assembled, wired and tested.
- **Supplied as:**
  - 1 piece.

**Note:**  
Please also order specific mains cable.

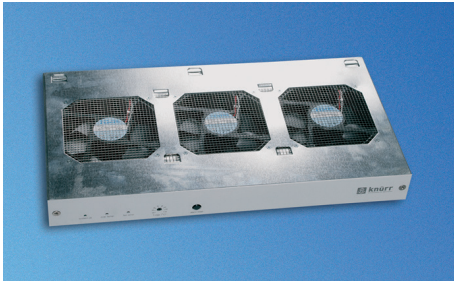
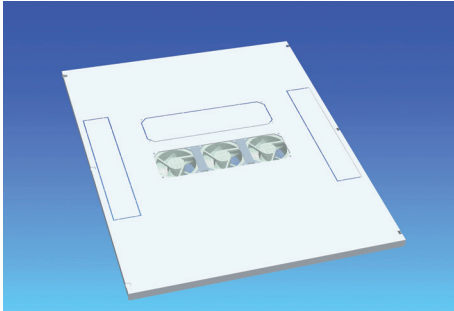
Name	Model	Description	P(W)	V(m³/h)	ΔP(Pa)	P(Pa)	Part No.	UP
CoolBlast® 230V 3-piece	Thermostatet	207....253 VAC; 50/60 Hz	45	495	74	45.2	<b>030273111</b>	1 piece

\*Dimensions in mm: W = Width · H = Height · D = Depth · h = installation height · d = useful depth · L = Length · X = insert color code · HU = standardized height unit (1 HU = 44.45 mm).

## Accessories

## Technical Specifications

### CoolBlast® Fan Unit for Roof Installation speed controlled



- For forced rack cooling
  - Suitable for installation at any time in the InstaRack top
  - DC version up on request (see CoolBlast fan units)
  - Settable reference temperature (20°C to 55°C)
  - Speed control: 30 to 100%, with sensor break 100 % rotation
  - Individual fan monitoring
  - Floating common alarm output for excess temperature alarm and fan failure
  - Optical status display for, O.K., excess temperature, and fan failure
  - Acoustic warning including reset button.
- **Material:**
    - Housing: Sheet, high-grade steel grid.
  - **Finish:**
    - Zinc-passivated front panel, powder-coated, smooth in RAL 7035 light gray.
  - **Approvals:**
    - CE symbol in accordance with Low Voltage Directive, 73/23/EEC, EMC directive 89/366/EEC.

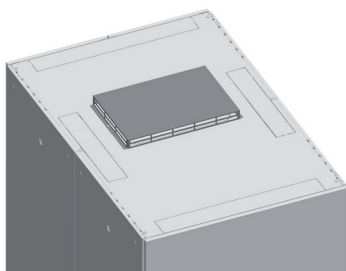
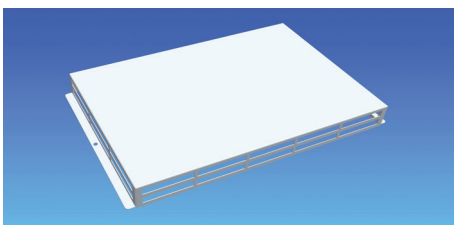
- **Includes:**
  - 1 CoolBlast fan unit®, 1 sensor cable, 2 m (plug-in), 1 signal cable, 2 m (plug-in), 1 mains cable, 3 m with safety plug (230 VAC), mounting material, operating instructions.
- **How supplied:**
  - Assembled, wired and tested.
- **Supplied as :**
  - 1 piece.

**Note:**

Please also order specific mains cable.

Name	Model	Description	P(W)	V(m³/h)	ΔP(Pa)	P(Pa)	Part No.	UP
CoolBlast® 230V 3-piece	Controlled SP	100...253 VAC; 50/60 Hz	25	553	68	49.6	<b>030273211</b>	1 piece
CoolBlast® 230V 3-piece	Controlled HP	100...253 VAC; 50/60 Hz	32	711	173	55.8	<b>030273241</b>	1 piece

### Cover for roof mount ventilation unit



- **Material/Surface:** CoolBlast® ventilation unit.
  - Base plate, covers: 1.0 mm steel sheet
  - Part number end digit 1: powdercoated, RAL 7035, light grey, structure.
- **Includes:**
  - 1 roof mount ventilation unit
  - Mounting material.
- **How supplied:**
  - 1 piece.

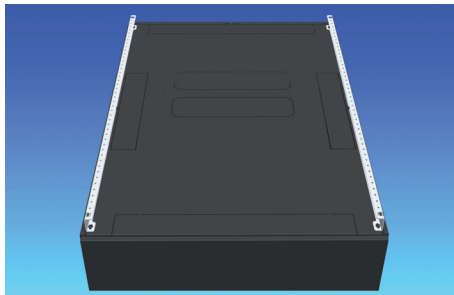
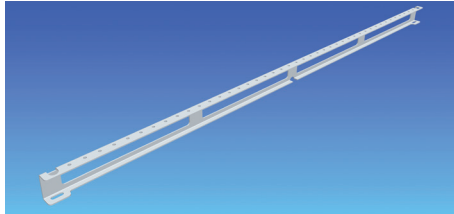
L	W	H	Rack type	Part No.	UP
468	299	40	InstaRack	<b>011500181001</b>	1 piece

\*Dimensions in mm: W = Width · H = Height · D = Depth · h = installation height · d = useful depth · L = Length · X = insert color code · HU = standardized height unit (1 HU = 44.45 mm).



**Accessories** **Technical Specifications**

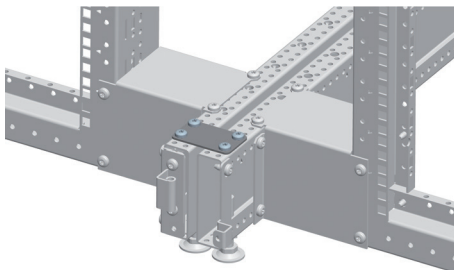
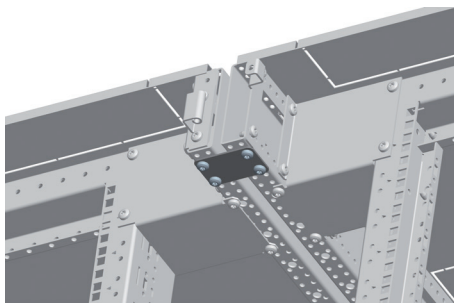
**InstaRack base support for roof cabling**



- Quick and easy to mount
- Compatible with InstaRack
- With screw holes for fixing angular brackets, transition and end parts.
- **Material/surface:**
  - Steel sheet 2.0 mm
  - Part number end digit .8: powdercoated, RAL 7021 black grey.
- **Includes:**
  - 2 base supports
  - Mounting material.
- **How supplied:**
  - In sets
  - 1 Set of 2 pieces.

*H	D	Rack type	Part No.	UP
44	800	InstaRack	011510548001	1 Set of 2 pieces
44	1000	InstaRack	011510548003	1 Set of 2 pieces
44	1100	InstaRack	011510548004	1 Set of 2 pieces
44	1200	InstaRack	011510548005	1 Set of 2 pieces

**Instarack side-by-side row connector**



- For a mechanical and stable connection between InstaRack rows.
- **Material/surface:**
  - Steel sheet, 2 mm galvanized.
- **Installation positions:**
  1. On the base of the upper depth structure
  2. On the top of the lower depth structure.
- **Includes:**
  - 4 side-by-side row connectors
  - Mounting material.
- **How supplied:**
  - In sets
  - 1 Set of 4 pieces.

**Note:**

Suitable only for cabinets without partitioned walls.

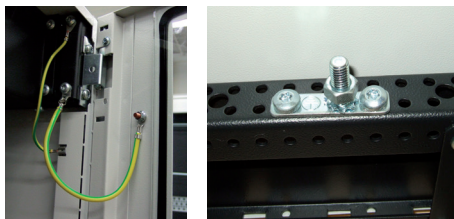
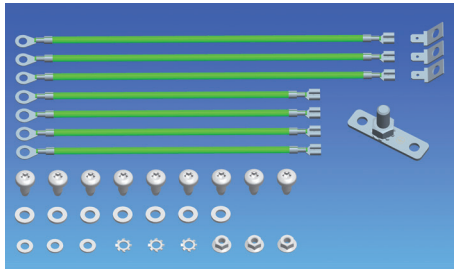
Rack type	Part No.	UP
InstaRack	011510660001	1 Set of 4 pieces

\*Dimensions in mm: W = Width · H = Height · D = Depth · h = installation height · d = useful depth · L = Length · X = insert color code · HU = standardized height unit (1 HU = 44.45 mm).

## Accessories

## Technical Specifications

### Earthing set for InstaRack



- For earthing top cover/ side panel and doors
- With central earthing bolt.
- **Includes:**
  - Earthlines
  - washers
  - screws
  - earthing bolt.

- **Supplied as:**
  - In sets
  - 1 Set.

Description	Rack type	Part No.	UP
Earthing set	InstaRack	011511179001	1 Set

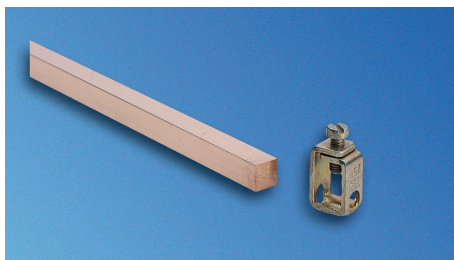
### Contact clamp



- Enables safe connection of equipment and components to grounding bar.
- For cables up to 25 mm<sup>2</sup>.
- **Lieferumfang:**
  - 20 x contact clamps.

Part No.	UP
011107159	20 Units

### Grounding bar



- For safe grounding or potential equalization of equipments and components.
- **Material:**
  - Electrolyte copper 9 x 9.
- **Scope of delivery:**
  - 1 x grounding bar
  - 2 x brackets
  - 1 x Mounting kit.

HU	Rack type	Part No.	UP
41	for MIR2 / DCM / INR	011107089	1 piece

\*Dimensions in mm: W = Width · H = Height · D = Depth · h = installation height · d = useful depth · L = Length · X = insert color code · HU = standardized height unit (1 HU = 44.45 mm).

Accessories	Technical Specifications
-------------	--------------------------

### Instarack locking set for side or rear panel



- For installation in the side or rear panel
- For protection against unauthorized access
- Can be retrofitted.
- **Standard inclusion:**
  - 1 x lockable fastener
  - 2 x keys.
- **Delivery:**
  - Set of 2 units (for 1 side panel).

Rack type	Part No.	UP
InstaRack	011500158001	Set of 2 units

### Door locking set



- **Scope of delivery:**
  - 1 lock set.
  - 2 keys (half-cylinder).

Rack type	Part No.	UP
INR / MIR2 / DCM	050412999	1 Set

\*Dimensions in mm: W = Width · H = Height · D = Depth · h = installation height · d = useful depth · L = Length · X = insert color code · HU = standardized height unit (1 HU = 44.45 mm).



**VertivCo.com** | Vertiv GmbH, Lehrer-Wirth-Str. 4, 81829, München, Germany Id.-Nr. De 131181345, WEEE DE90254228

© 2016 Vertiv Co. All rights reserved. Vertiv™, the Vertiv logo, Vertiv™ Knürr INR Network Rack, Rack PDUs, Rack MPH2™ and CoolBlast® are trademarks or registered trademarks of Vertiv Co. All other names and logos referred to are trade names, trademarks or registered trademarks of their respective owners. While every precaution has been taken to ensure accuracy and completeness herein, Vertiv Co. assumes no responsibility, and disclaims all liability, for damages resulting from use of this information or for any errors or omissions. Specifications are subject to change without notice.