

BALL VALVES FOR GAS TURBINES

**Reliable combination:
Ball Valve & Actuator**

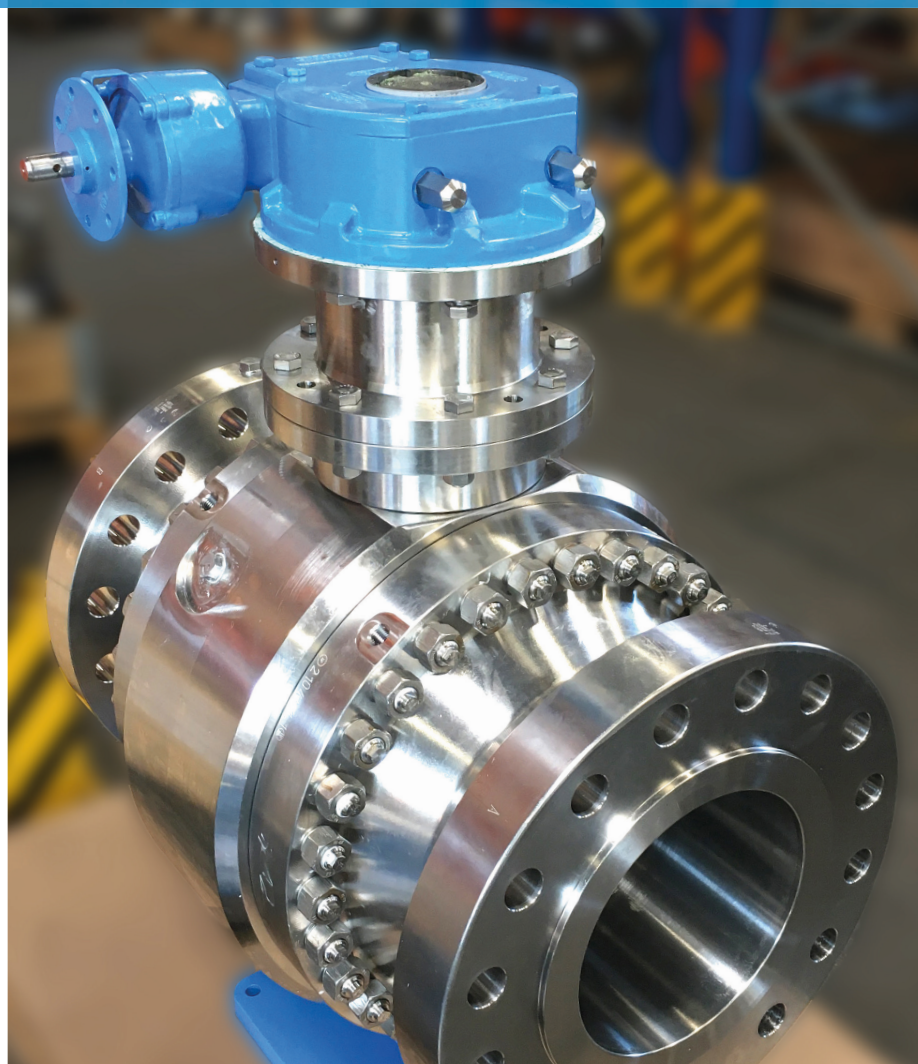
Gas Turbines:

Siemens

SGT5-4000F (V94.3A)

SGT5-2000E (V94.2)

Ansaldo AE94.3A, AE94.2



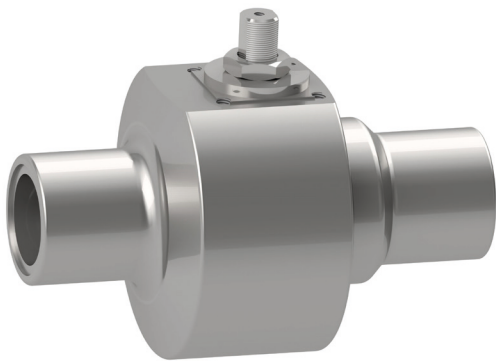
OVERVIEW

TURBINE TYPE	DN	PN	SERVICE	HARTMANN ARTICLE NO.	CONSISTING OUT OF	VALVE MATERIAL	CONN.	ACTUATOR	PAGE
	25	160	Fuel Oil Drain	40005338	valve with actuator	Stainless Steel	G1¼"	TA 130 FM	4
				40001245	valve w/o adaption				
				40001208	valve with adaption				
				10027695-001	actuator with controls				
	25	160	Fuel Oil Drain	40001977	valve with actuator	Stainless Steel	G1¼"	TA 130 HA	4
				40001245	valve w/o adaption				
				40001208	valve with adaption				
				10054223-001	actuator with controls				
	25	160	Fuel Oil Drain	40005339	valve with actuator	Stainless Steel	G1¼"	B1JU10/40HFL	4
				40005353	valve w/o adaption				
				10057530-001	actuator with controls				
SGT5-4000F (V94.3A) / AE94.3A	25	160	Fuel Oil Drain	40000399	valve with actuator	Stainless Steel	G1¼"	TA 120/2 FM	4
				40001245	valve w/o adaption				
				40001208	valve w/o adaption				
				10028238-001	actuator with controls				
	50	160	Fuel Oil Drain	40000166	valve with actuator	Stainless Steel	R13	ET-SO300-5 - 1x SOV	5
				40000606	valve w/o adaption				
	50	160	Fuel Oil Drain	10024676-001	actuator with controls				
				40005260	valve with actuator	Stainless Steel	R13	ET-SO300-5 - 2x SOV	5
				40000606	valve w/o adaption				
				10079138-001	actuator with controls				
SGT5-2000E (V94.2) / AE94.2	50	160	Fuel Oil Drain	40005336	valve with actuator	Carbon Steel	E	ET-SO600-6	5
				40005354	valve w/o adaption				
				10027655-001	actuator with controls				
	25	40	Purge Air	40001190	valve with actuator	Stainless Steel	B2	ET-SO00150-6 U	6
	50	40	Purge Air	40000098	valve with actuator	Stainless Steel	B2	ET-SC00600-6 U	7
	100	40	Purge Air	40001182	valve with actuator	Stainless Steel	B2	ET-SC00900-6 U	8
	100	40	Purge Air	40001189	valve with actuator	Stainless Steel	B2	ET-SC00900-6 U with positioner	8
	250	100	Fuel Gas	40001946	valve with gearbox	Stainless Steel	RF		9

TURBINE TYPE	SGT5-2000E (V94.2) / AE94.2								
	DN	PN	SERVICE	HARTMANN ARTICLE NO.	CONSISTING OUT OF	VALVE MATERIAL	CONN.	ACTUATOR	PAGE
	40	100	Fuel Oil Transfer	40000103	valve with actuator	Stainless Steel	R13	ET25-2-220-04	10
				40001426	valve w/o adaption				
				40002102					
				40002103					
				40005351					
				10027624-00					
	10068980-002	actuator with controls							
	40	40	Pilot Gas Stop	40004311	valve with actuator	Stainless Steel	B2	ET25-2-220-04	11
				40005355	valve w/o adaption				
				10068980-002	actuator with controls				
	100	40	Fuel Gas Stop	40004310	valve with actuator	Stainless Steel	B2	ET25-2-220-04	12
40005356				valve w/o adaption					
10068980-002				actuator with controls					
100	16	Fuel Oil	40005337	valve with actuator	Stainless Steel	E	ET-SC00600-6	13	
			40005357	valve w/o adaption					
			10023817-001	actuator with controls					
Electrical Actuator for SGT5-2000E			10068980-002	actuator with controls			ET25-2-220-04		
Ask for detailed product range									

Further ball valves for turbines on request.

BALL VALVE DN 25 PN 160

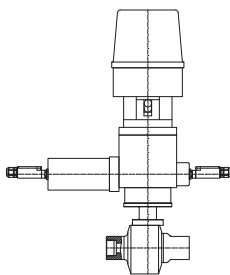
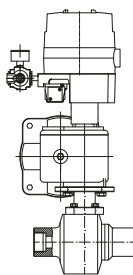
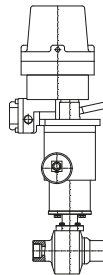
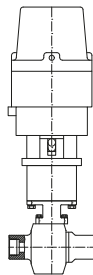


Gas Turbine: SGT5-4000F (V94.3A) / AE94.3A

Service: Fuel Oil Drain
Function: Shut-Off Valve
Features: Metal-seated, PTFE coating
Type: ASFS
End Connection: ISO G 1¼"
Length (mm): 216

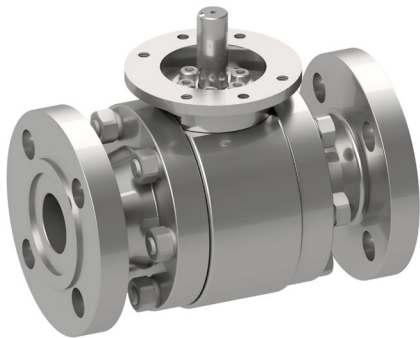
Media (Temperature): Fuel Oil (+55°C),
Natural Gas (+315°C, max. 10 s)

Material Body: Stainless Steel
Material Internals: Stainless Steel



Actuator	TA 130 HA electric	TA 130 FM electric	B1JU10/40HFL electric	TA 120/2 FM electric
Hartmann Article No.:	40005338	40001977	40005339	40000399

BALL VALVE DN 50 PN 160

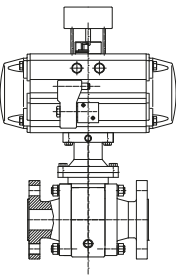
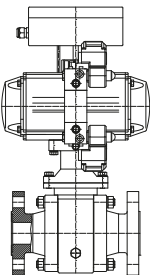
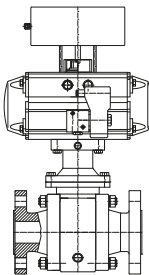


Gas Turbine: SGT5-4000F (V94.3A) / AE94.3A

Service: Fuel Oil Drain
Function: Shut-Off Valve
Features: PTFE coating
Type: AST
End Connection: DIN EN 1092-1 F;
DIN EN 1092-1 B2
Length (mm): 300

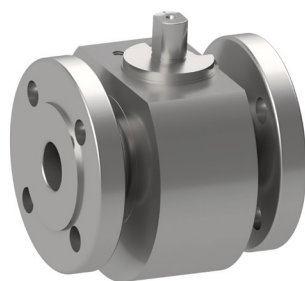
Media (Temperature): Fuel Oil (+55°C, +100°C),
Water (+100°C), Air (+200°C)

Material Body: Stainless Steel, Carbon Steel
Material Internals: Stainless Steel



Actuator	ET-SO300-5 pneumatic 1x SOV	ET-SO300-5 pneumatic 2x SOV	ET-SO600-6 pneumatic
Hartmann Article No.:	40000166	40005260	40005336

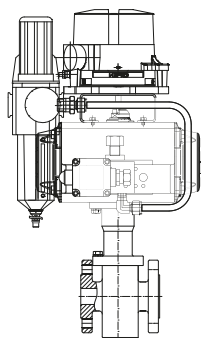
BALL VALVE DN 25 PN 40



Gas Turbine: SGT5-4000F (V94.3A) / AE94.3A

Service: Purge Air
Function: Shut-Off Valve
Type: ASF
End Connection: DIN EN 1092-1 B2
Length (mm): 125

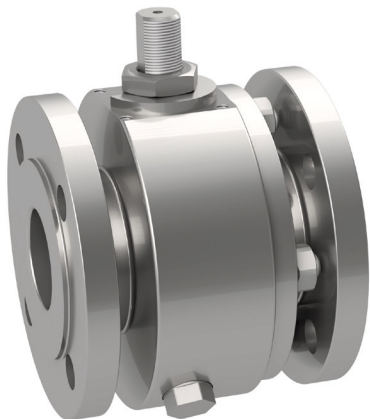
Media (Temperature): Air (+220°C)
Material Body: Stainless Steel
Material Internals: Stainless Steel



Actuator ET-S000150-6 U pneumatic

Hartmann Article No.: 40001190

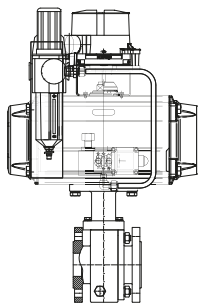
BALL VALVE DN 50 PN 40



Gas Turbine: SGT5-4000F (V94.3A) / AE94.3A

Service: Purge Air
Function: Shut-Off Valve
Type: ASF
End Connection: DIN EN 1092-1 B2
Length (mm): 150

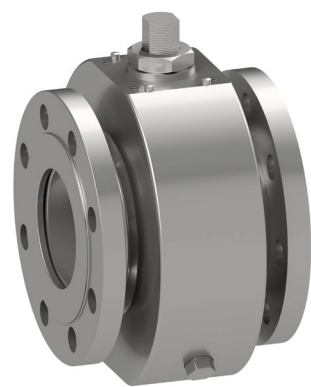
Media (Temperature): Air (+220°C)
Material Body: Stainless Steel
Material Internals: Stainless Steel



Actuator ET-SC00600-6 U pneumatic

Hartmann Article No.: 40000098

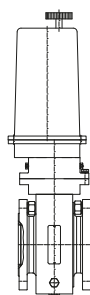
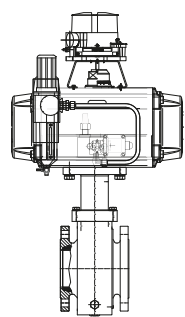
BALL VALVE DN 100 PN 40



Gas Turbine: SGT5-4000F (V94.3A) / AE94.3A

Service: Purge Air
Function: Shut-Off Valve
Type: AST
End Connection: DIN EN 1092-1 B2
Length (mm): 190

Media (Temperature): Air (+220°C)
Material Body: Stainless Steel
Material Internals: Stainless Steel



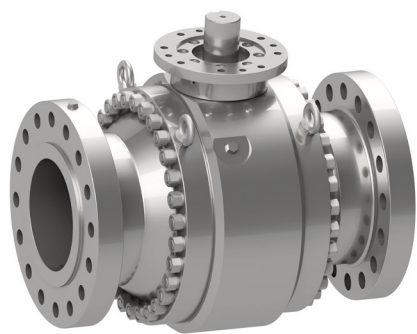
Actuator ET-SC00900-6 U X
pneumatic

Hartmann Article No.: 40001182

ET-SC00900-6 U
pneumatic + pos.

40001189

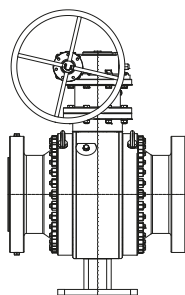
BALL VALVE DN 250 PN 100



Gas Turbine: SGT5-4000F (V94.3A) / AE94.3A

Service: Fuel Gas
Function: Shut-Off Valve
Features: Metal-seated
Type: AST
End Connection: RF
Length (mm): 787

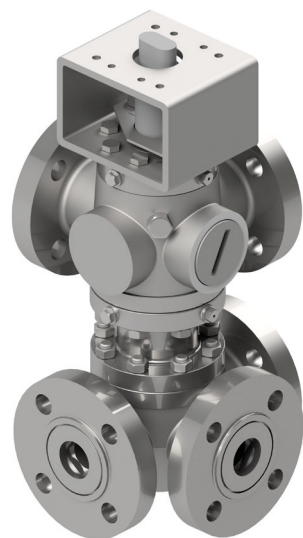
Media (Temperature): Fuel Gas (+250°C)
Material Body: Stainless Steel
Material Internals: Stainless Steel



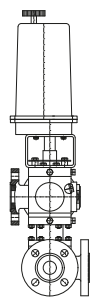
Actuator Gearbox + Handwheel

Hartmann Article No.: 40001946

BALL VALVE DN 40 PN 100



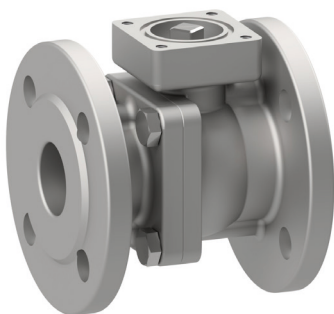
Gas Turbine:	SGT5-2000E (V94.2) / AE94.2
Service:	Fuel Oil Transfer
Function:	Elbow Valve + Three-Way-Valve
Type:	KUT
End Connection:	DIN EN 1092-1 B2
Length (mm):	240
Media (Temperature):	Fuel Oil, light (LFO) (+55°C), Fuel Oil, heavy (RFO) (+140°C), Air (+160°C)
Material Body:	Stainless Steel
Material Internals:	Stainless Steel



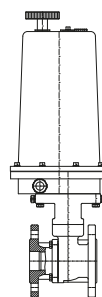
Actuator ET25-2-220-04 electric

Hartmann Article No.: 40000103

BALL VALVE DN 40 PN 40



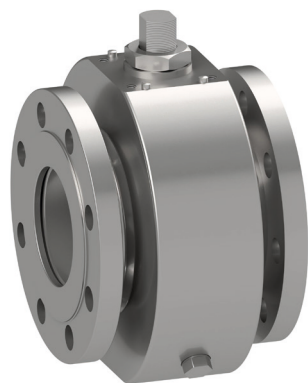
Gas Turbine:	SGT5-2000E (V94.2) / AE94.2
Service:	Pilot Gas Stop
Function:	Shut-Off Valve
Type:	ASF
End Connection:	DIN EN 1092-1 B2
Length (mm):	140
Media (Temperature):	Natural Gas (+200°C)
Material Body:	Stainless Steel
Material Internals:	Stainless Steel



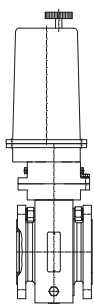
Actuator ET25-2-220-04 electric

Hartmann Article No.: 40004311

BALL VALVE DN 100 PN 40



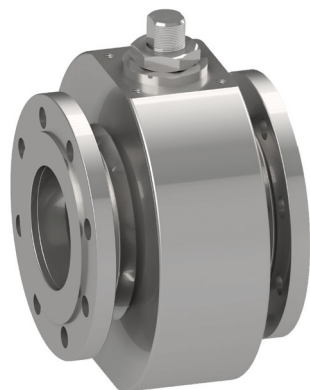
Gas Turbine:	SGT5-2000E (V94.2) / AE94.2
Service:	Fuel Gas Stop
Function:	Shut-Off Valve
Type:	ASTG
End Connection:	DIN EN 1092-1 B2
Length (mm):	190
Media (Temperature):	Natural Gas (+200°C)
Material Body:	Stainless Steel
Material Internals:	Stainless Steel



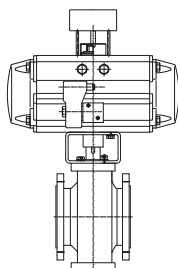
Actuator ET25-2-220-04 electric

Hartmann Article No.: 40004310

BALL VALVE DN 100 PN 16

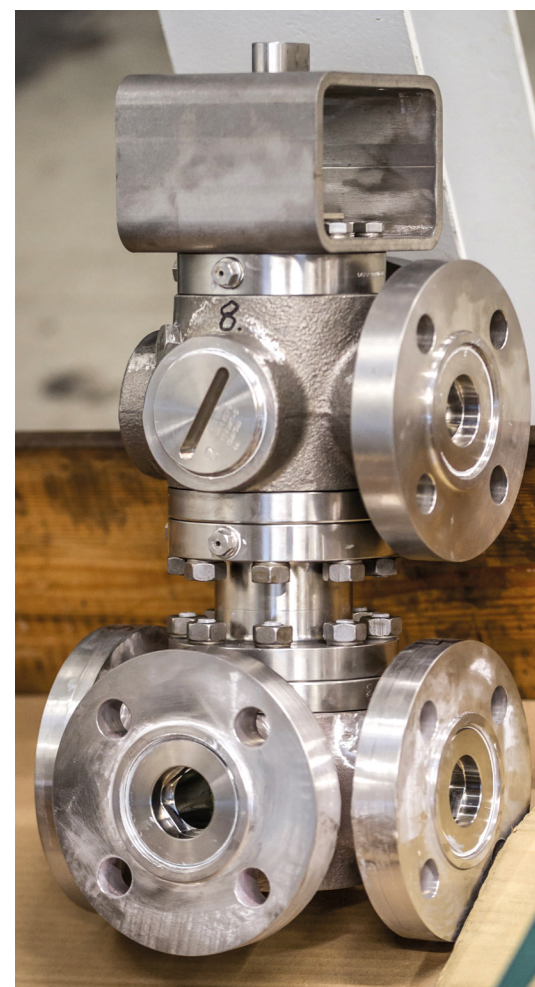
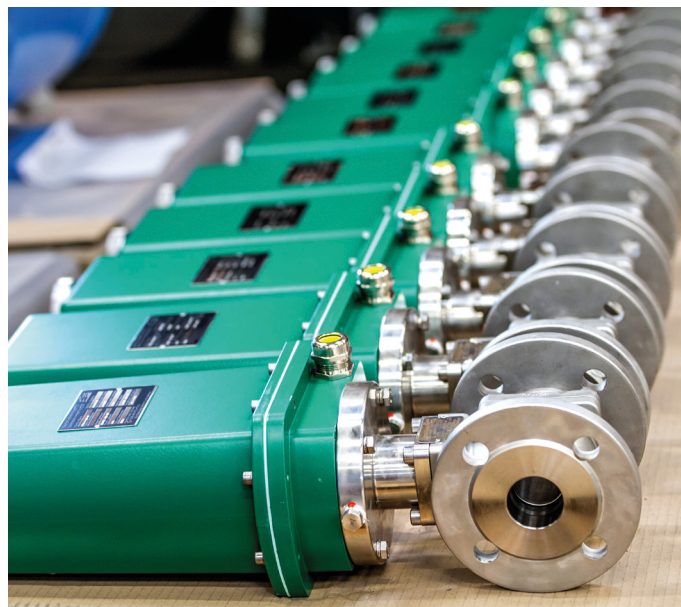


Gas Turbine:	SGT5-2000E (V94.2) / AE94.2
Service:	Fuel Oil
Function:	Shut-Off Valve
Type:	ASTG
End Connection:	DIN EN 1092-1 B2
Length (mm):	190
Media (Temperature):	Fuel Oil (+55°C)
Material Body:	Carbon Steel
Material Internals:	Stainless Steel



Actuator ET-SC00600-6 pneumatic

Hartmann Article No.: 40005337



QUALITY MADE IN GERMANY

Safe. Reliable. Long-lasting.



INDIVIDUAL DESIGN

Our sales and design engineers eagerly await your enquiries from the high performance sector. In close collaboration we develop suitable components for your special applications.



SOLUTIONS FOR EXTREME AREAS

Hartmann ball valves and wellheads are designed for pressure classes up to 690 bar, temperatures from -200 to +550°C as well as for high cycle operations and media of all types.



QUALITY THAT PAYS

Durable and low maintenance products reduce the life cycle costs of your plants. This is why we develop, assemble and test exclusively in Germany.



EXPERTISE & CONSULTATION FROM A SINGLE SOURCE

You profit from more than 70 years experience during all project phases. We provide you with support, from consulting, development right through to installation and maintenance service.

HARTMANN VALVES & WELLHEADS

The family-owned Hartmann Valves GmbH is one of the leading manufacturers of special ball valves, scraper valves and wellheads. Our high performance components are installed all over the world - in the crude oil, natural gas, (petro)chemical industry as well as in power plant technology, geothermal and other renewables such as power to gas.

All products are designed to individual requirements and equipped with our metal-to-metal sealing system. Design, assembly and tests are carried out solely in our factories in Celle and Burgdorf-Ehlershausen. Hartmann is now run by the third family generation and have developed into an international system supplier that today employs over 160 people.



A GLIMPSE INTO OUR PRODUCTION

www.hartmann-valves.com/en/film

CONTACT

HARTMANN VALVES GMBH GERMANY - WORLDWIDE

Bussardweg 15
31303 Burgdorf-Ehlershausen
Germany

SALES MANAGER

THOMAS DANZMANN
+49 5085 980127
[t.danzmann\[at\]hartmann-valves.com](mailto:t.danzmann@hartmann-valves.com)



www.hartmann-valves.com

