



# Email Security appliances and software

Protect your infrastructure from email threats and compliance violations with powerful, easy-to-use solutions.

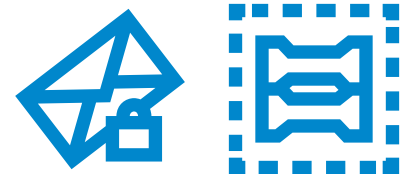
Email is crucial for your business communication, but it can also expose your business to sabotage and productivity drains if email-based threats such as spam, phishing, spoofing, viruses and zombies flood your mail servers and user inboxes. What's more, government regulations now hold your business accountable for protecting confidential data and ensuring it is not leaked and that email containing sensitive customer data or confidential information is securely exchanged. Whether your organization is a growing small-to medium-sized business (SMB), a large, distributed enterprise or a managed service provider (MSP), you need a cost-effective way to deploy email security and encryption, and the scalability to easily grow capacity for—and delegate management across—organizational units and domains.

Dell™ SonicWALL™ Email Security appliances and software provide superior protection from inbound and outbound email threats and compliance violations by scanning all inbound and outbound email content and attachments for sensitive data, delivering real-time protection from spam, phishing, viruses, spoofing, zombies, directory harvest (DHA), Denial of Service (DoS) and other attacks. The solution leverages multiple, patented<sup>d</sup> Dell SonicWALL threat detection techniques and a unique, worldwide attack identification and monitoring network.

The solution also includes Domain-based Message Authentication, Reporting and Conformance (DMARC), a powerful email authentication method that helps identify spoofed mail, reducing spam and phishing attacks, and also reports on sources and senders of email, so you can identify and shut down unauthorized senders falsifying email with your address and protect your brand. In addition, it prevents confidential data leaks and regulatory violations with advanced compliance scanning and management, including integrated email encryption cloud service to ensure secure exchange of sensitive data.

Dell SonicWALL Email Security is a flexible solution that deploys as a scalable hardware appliance, virtual appliance or software optimized for Microsoft® Windows Server®, and it scales easily to protect 10 to 100,000 mailboxes. Large enterprises can configure the solution for high availability in split mode to centrally and reliably manage large-scale deployments.

Administration of the Email Security solution is intuitive, quick and simple. You can safely delegate spam management to end users, while still retaining ultimate control over security enforcement. You can also easily manage user and group accounts with seamless multi-LDAP synchronization. For large, distributed environments, multi-tenancy support lets you delegate sub-administrators to manage settings at multiple organizational units (such as enterprise divisions or MSP customers) within a single Email Security deployment.



## Benefits:

- Advanced analysis techniques to stop spam, phishing, spoofing, zombie and virus attacks
- 24/7 access to the Dell SonicWALL GRID Network to stop new threats as they emerge
- Add-on anti-virus and anti-spyware protection for multi-layer security
- Optional Email Compliance and Encryption subscription services for secure, mobile-ready, email encryption and exchange
- Intelligent automation, task delegation, at-a-glance customizable dashboard and robust reporting for simplified management
- Flexible deployment options for long-term value

## Features

**Advanced analysis techniques** — Stop spam, phishing, spoofing, zombie and virus attacks with over 99% effectiveness using multiple proven, patented<sup>1</sup> techniques including reputation checks that check not only a message's sender IP reputation, but also the reputation of its content, structure, links, images and attachments. Email Security protects against DHA and DoS attacks, and ensures sender validation. Advanced analysis techniques include adversarial Bayesian filtering, image analysis and gibberish detection to uncover hidden known threats, and new threats.

**Dell SonicWALL GRID Network** — Receive the most accurate and up-to-date protection against new spam attacks while ensuring delivery of benign email with real-time threat information from the Dell SonicWALL Global Response Intelligent Defense (GRID) network, which collects information from millions of data sources. The Dell SonicWALL threat team analyzes that information and performs rigorous testing to establish reputation scores for senders and content, identifying new threats in real-time.

**Anti-virus and anti-spyware protection** — Get up-to-date anti-virus and anti-spyware protection with Dell SonicWALL GRID Anti-Virus™. Also add Cyren, Kaspersky and McAfee® anti-virus signatures for multi-layer protection that is superior to that provided by solutions that rely on a single anti-virus technology.

Moreover, you can safeguard your network from the time a new virus outbreak occurs until the time an anti-virus signature update is available by adding the predictive technology of Dell SonicWALL Time Zero Virus Protection.

**Intelligent automation, task delegation and robust reporting** — Simplify management with intelligent automation, task delegation and robust reporting. Automatically manage email addresses, accounts and user groups. Seamlessly integrate with multiple-LDAP servers. Confidently delegate spam management to end users with the downloadable Junk Button for Outlook® plug-in, while still retaining full control. Locate any email in seconds with the Rapid Message Search Engine. Centralized reporting (even in split mode) gives you easily customizable, system-wide and granular information on attack types, solution effectiveness and built-in performance monitoring and reports are available in PDF and JPEG formats.

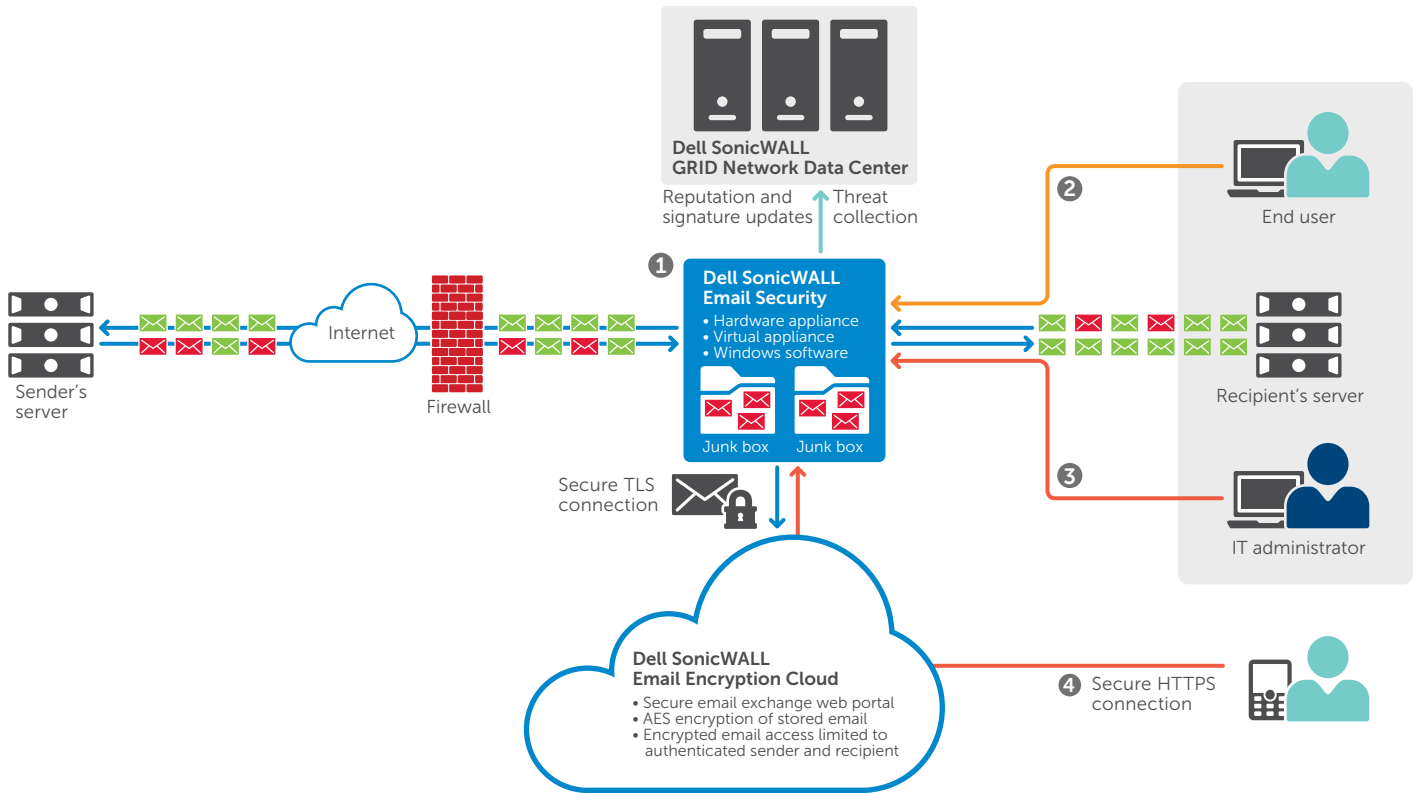
**Compliance Policy Management** — This add-on service enables compliance with regulatory mandates by helping you to identify, monitor and report on email that violates compliance regulations and guidelines (e.g., HIPAA, SOX, GLBA, and PCI-DSS) or corporate data loss guidelines. The subscription service also enables policy-based routing of mail for approval, archiving and encryption.

**Email Encryption** — Add a powerful framework for stopping data leaks, managing and enforcing compliance requirements and providing mobile-ready secure email exchange for organizations of all sizes.

Encrypted email can be tracked to confirm the time of receipt and time opened. Intuitive for the recipient, a notification email is delivered to the recipient's inbox with instructions to simply log into a secure portal to read or securely download the email. The service is cloud-based with no additional client software necessary and unlike competitive solutions; the encrypted email may be accessed and read from mobile devices or laptops.

**Flexible deployment options** — Gain scalable, long-term value by configuring your solution for growth and redundancy with minimal upfront costs. You can deploy Email Security as a hardened, high-performance appliance, as software leveraging existing infrastructure or as a virtual appliance leveraging shared computing resources to optimize utilization, ease migration and reduce capital costs. Start with a single system and then as your business grows, add capacity and move to a fail-over enabled, split-mode architecture. Multi-tenancy support allows large enterprise or managed service provider deployments with multiple departments or customers to establish organizational units with one or multiple domains. The deployment may be centrally managed, but still allows a given organizational unit to have its own users, sub-administrators, policy rules, junk boxes and more.

<sup>1</sup> U.S. Patents 7,814,545; 7,343,624; 7,665,140; 7,653,698; 7,546,348



- 1 Inspect and protect**
- Multiple proven, patented<sup>1</sup> techniques: Anti-spam, anti-phishing, anti-spoofing and anti-virus
  - Real-time threat updates with GRID Network
  - Dell SonicWALL GRID AV, Time Zero AV, McAfee AV, Kaspersky AV and Cyren AV
  - Compliance scan and routing

- 2 Managed by end user**
- Junk mailbox
  - Allow/block list
  - Junk summary settings

- 3 Managed by IT administrator**
- Set up
  - Configure
  - Monitor

- 4 Access to encrypted email**
- Mobile and desktop access to encrypted email
  - Read or download encrypted email
  - Send encrypted reply

<sup>1</sup> U.S. Patents 7,814,545; 7,343,624; 7,665,140; 7,653,698; 7,546,348

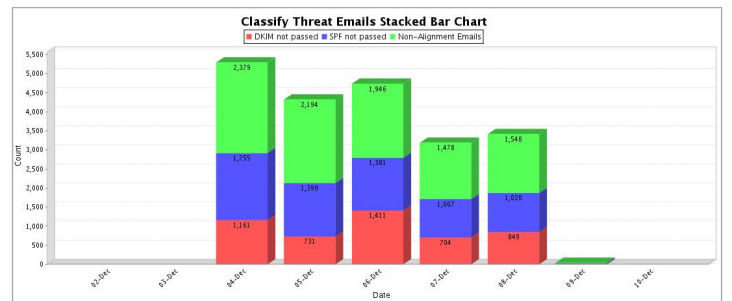
## Reports and monitoring

Dell SonicWALL Email Security with customizable, drag and drop, at-a-glance dashboard is easy to set up, easy to manage and easy to own.



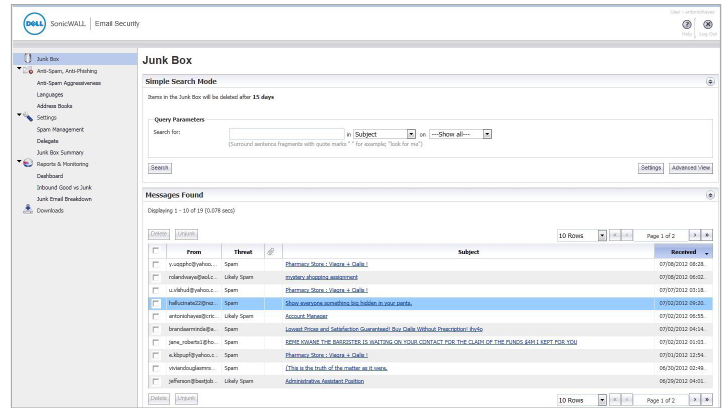
## Anti-spoofing DMARC report

Identify sources and senders of unauthorized email.



## Junk Box summaries

Junk Box summaries optimize end-user email productivity, reduce complaints and improve overall effectiveness.



## Dell SonicWALL Email Security deployments

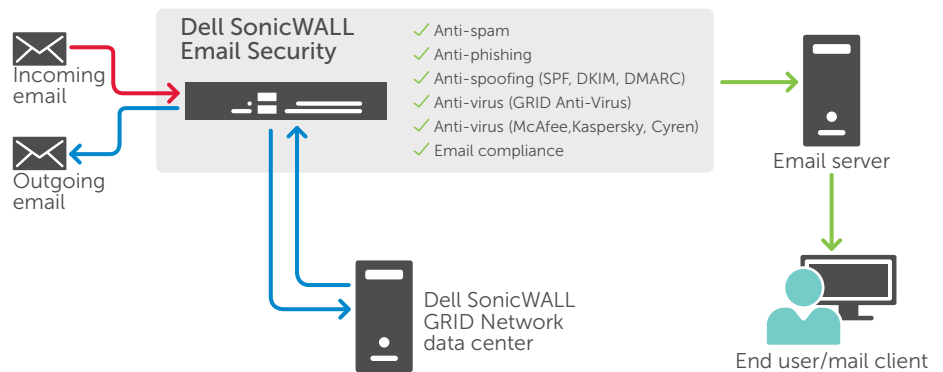
The highly flexible architecture of Dell SonicWALL Email Security enables deployments in organizations that require a highly scalable, redundant and distributed email protection solution that can be centrally managed. Dell SonicWALL Email Security can be deployed in either **all-in-one** (Figure 1) or **split mode** (Figure 2).

In **split mode**, systems may be configured as a remote analyzer or a control center. In a typical split-mode setup, one or more **remote analyzers** is connected to a **control center**. The **remote analyzer** receives email from one or more domains and applies connection management, email filtering (anti-spam, anti-phishing and anti-virus) and advanced policy techniques to deliver benign email to the downstream email server. The **control center** centrally manages all remote

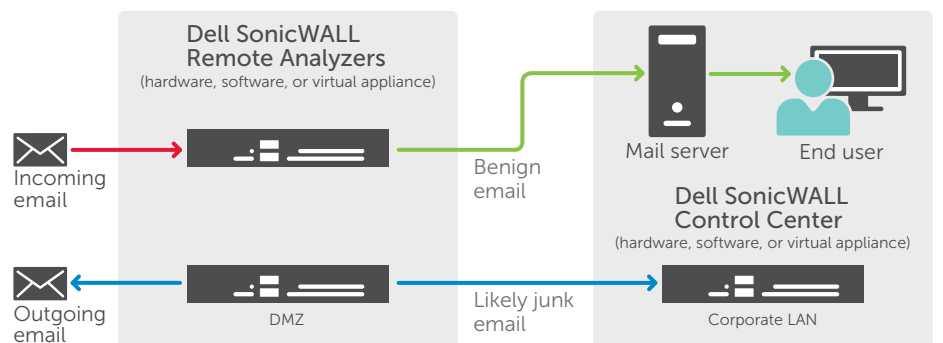
analyzers and collects and stores junk email from the remote analyzers. Centralized management includes reporting and monitoring of all related systems. This paradigm allows the solution to cost-effectively scale and protect both inbound and outbound email for growing organizations. Using Dell SonicWALL Email Security Virtual Appliances, split mode can be fully deployed on one or multiple servers for optimal efficiencies of scale.

## Flexible, scalable deployment options

**All-in-one configuration** (Figure 1) In an all-in-one configuration, filtering and management take place on the same system.



**High availability deployment** (Figure 2) For load balancing and redundancy, split mode enables organizations to filter at the network perimeter while providing centralized control. Administrators can easily synchronize Dell SonicWALL Email Security across multiple LDAP servers in distributed and hosted environments for scalable deployment.



## Specifications

Appliance and software features – subscriptions available in 25, 50, 100, 250, 500, 1,000, 2,000, 5,000, and 10,000 user packs

	Appliance, Virtual Appliance	Windows Server®	
<b>Complete inbound and outbound email protection</b>			
Anti-spam effectiveness	99%+	99%+	
Connection management with advanced IP reputation	Yes	Yes	
Phishing detection, classification, blocking	Yes	Yes	
Directory harvest, denial of service, NDR protection	Yes	Yes	
Anti-spoofing with support for SPF, DKIM and DMARC	Yes	Yes	
Policy rules for user, group, all	Yes	Yes	
In memory message transfer agent (MTA) for enhanced throughput	Yes	Yes	
Complete inbound and outbound protection in a single system	Yes	Yes	
<b>Easy administration</b>			
Installation	< 1 hour	< 1 hour	
Management per week	< 10 min	< 10 min	
Automatic multi-LDAP sync for users, groups	Yes	Yes	
Compatible with all SMTP email servers	Yes	Yes	
Allow/deny end user controls	Yes	Yes	
Customize, schedule and email 30+ reports	Yes	Yes	
Judgment details	Yes	Yes	
At-a-glance, customizable management dashboard	Yes	Yes	
Rapid message search engine	Yes	Yes	
Scalable split-mode architecture	Yes	Yes	
Clustering and remote clustering	Yes	Yes	
<b>Easy for end users</b>			
Single sign-on	Yes	Yes	
Per user junk boxes, junk box summary actionable email	Yes	Yes	
Per user anti-spam aggressiveness, block/allow lists	Yes	Yes	
<b>Email protection subscription with dynamic support—required</b>			
Dell SonicWALL GRID anti-virus, anti-spam, anti-phishing auto-updates every 5 minutes	Yes	Yes	
8x5 or 24x7 support	Yes	Yes	
RMA (appliance replacement)	Yes	Yes	
Software/firmware updates	Yes	Yes	
<b>Anti-virus subscription—optional</b>			
McAfee anti-virus	Yes	Yes	
Dell SonicWALL TimeZero anti-virus	Yes	Yes	
Zombie detection	Yes	Yes	
<b>Compliance subscription—optional</b>			
Robust policy management,	Yes	Yes	
Attachment scanning	Yes	Yes	
Record ID matching	Yes	Yes	
Dictionaries	Yes	Yes	
Approval boxes/workflow	Yes	Yes	
Email archiving	Yes	Yes	
Compliance reporting	Yes	Yes	
<b>Encryption subscription—optional</b>			
Compliance subscription capabilities plus policy-enforced email encryption and secure email exchange	Yes	Yes	
<b>Total secure subscription—optional</b>			
Includes email protection dynamic 24x7 subscription plus multi-layer anti-virus (McAfee, Kaspersky, Cyren) and compliance management subscription features	Yes	Yes	
<b>Email Security Appliances</b>			
	3300	4300	ES8300
Domains	Unrestricted		
Operating system	Hardened Dell SonicWALL Linux OS appliance		
Rackmount chassis	1RU	1RU	2RU
CPU(s)	Intel 2.0GHz	Intel Core 2 Duo 2.13 GHz	Quad Core Xeon 2.0GHz
RAM	2 GB	4 GB	4 GB
Hard drive	250 GB	2 x 250 GB	4 x 750 GB
Redundant disk array (RAID)	—	RAID 1	RAID 5
Hot swappable drives	No	Yes	Yes
Redundant power supply	No	No	Yes
SAFE Mode Flash	Yes	Yes	Yes
Dimensions	17.0 x 16.4 x 1.7 in 43.18 x 41.59 x 4.44 cm	17.0 x 16.4 x 1.7 in 43.18 x 41.59 x 4.44 cm	27.5 x 19.0 x 3.5 in 69.9 x 48.3 x 8.9 cm
Weight	16 lbs / 7.26 kg	16 lbs / 7.26 kg	50.0 lbs/ 22.7 kg
WEEE weight	16 lbs / 7.37 kg	16 lbs / 22.2 kg	48.9 lbs/ 22.2 kg
Power consumption (watts)	86	101	280
BTUs	293	344	1098
MTBF @25C in hours	125,004	125,004	125,004
MTBF @25C in years	14.27	14.27	14.27
<b>Email Security Software</b>			
Domains	Unrestricted		
Operating system	Microsoft Hyper-V Server 2012 (64-bit) or higher Windows Server 2008 R2 or higher x64 bit only		
CPU	Intel Pentium: P4 or compatible CPU		
RAM	8 GB minimum configuration		
Hard drive	160 GB minimum configuration		
<b>Email Security Virtual Appliance</b>			
Hypervisor	ESXi™ and ESX™ (version 5.0 and newer)		
Operating system installed	Hardened SonicLinux		
Allocated memory	4 GB		
Appliance disk size	160 GB		
VMware hardware compatibility guide	<a href="http://www.vmware.com/resources/compatibility/search.php">http://www.vmware.com/resources/compatibility/search.php</a>		

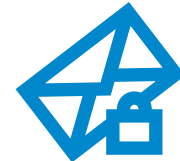


### Dell SonicWALL Email Security Appliances

Dell SonicWALL Email Security Appliance 3300  
01-SSC-6607

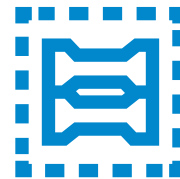
Dell SonicWALL Email Security Appliance 4300  
01-SSC-6608

Dell SonicWALL Email Security Appliance ES8300  
01-SSC-6609



### Dell SonicWALL Email Security Software

01-SSC-6636



### Dell SonicWALL Email Security Virtual Appliance

01-SSC-7636

### Subscriptions

01-SSC-7405 Dell SonicWALL Total Secure Email Subscription 10,000 users (1Yr)

01-SSC-7404 Dell SonicWALL Total Secure Email Subscription 5,000 users (1Yr)

01-SSC-7403 Dell SonicWALL Total Secure Email Subscription 2,000 users (1Yr)

01-SSC-7398 Dell SonicWALL Total Secure Email Subscription 1,000 users (1Yr)

01-SSC-7402 Dell SonicWALL Total Secure Email Subscription 750 users (1Yr)

01-SSC-7397 Dell SonicWALL Total Secure Email Subscription 500 users (1Yr)

01-SSC-7401 Dell SonicWALL Total Secure Email Subscription 250 users (1Yr)

01-SSC-7406 Dell SonicWALL Total Secure Email Subscription 100 users (1Yr)

01-SSC-7400 Dell SonicWALL Total Secure Email Subscription 50 users (1Yr)

01-SSC-7399 Dell SonicWALL Total Secure Email Subscription 25 users (1Yr)

Visit [www.sonicwall.com](http://www.sonicwall.com) for additional user packs.

### For more information

Dell network security (SonicWALL)  
5455 Great America Parkway  
Santa Clara, CA 95054-3645

[www.sonicwall.com](http://www.sonicwall.com)  
T +1 408.745.9600  
F +1 408.745.9300

### Dell Software

5 Polaris Way, Also Viejo, CA 92656 | [dellsoftware.com](http://dellsoftware.com)  
If you are located outside North America, you can find local office information on our Web site.

© 2015 Dell, Inc. ALL RIGHTS RESERVED. Dell, Dell Software, the Dell Software logo and products — as identified in this document — are registered trademarks of Dell, Inc. in the U.S.A. and/or other countries. All other trademarks and registered trademarks are property of their respective owners.

Datasheet-SonicWALL-EmailSecuritySeries-US-KS-26863

