



FTTH

Fiber To The Home

For Outdoor Transitions

OUTDOOR FIBER INTERFACE DEVICES/SLACK STORAGE UNITS

Fiber Interface Device/Slack Storage Transition Enclosures provide a point of connection between the OSP fiber drop and customer fiber drop. Tii Transition Enclosures are offered in a variety of sizes to meet your installation and placement requirements. Available with slack storage and accommodations for up to 16 fiber terminations.



6.11" x 4.33" x 2.15"

Up to 4 fibers, indoor or outdoor

169F	XX	XX			
	ADAPTER TYPE		NO. OF PORTS		
	01 - SC-APC	02 - SC-UPC	01 - 1	02 - 2	03 - 4



6.67" x 6.56" x 2.87"

*Terminates Up to Two Single-Fiber Cables (Four with LC)
Optional Copper Connectivity Interface for Small Cells, DAS, or G.fast*

171F	-XX	X	XX
	SERIES	MIDDLE PLATE	GRD STUD
	00 = No FP Plate, No Adapters 01 = FP Plate, No Adapters U1 = One SC UPC Adapter on FP Plate A2 = Two SC APC Adapter on FP Plate	0 = None 1 = Middle Plate	0 = None 1 = Ground Stud
	U2 = Two SC UPC Adapter on FP Plate A1 = One SC APC Adapter on FP Plate		



10.26" x 9.94" x 2.91"

Up to 12 fibers, up to 50' slack storage, indoor or outdoor

506F	-XX	-XX	-XX	-X
	SERIES	ADAPTER TYPE	NO. OF PORTS	CONFIGURATION OPTIONS
	01 = Fiber Plate (1, 2, or 4 adapters only) 02 = Fiber Plate (6 Adapters) 04 = Fiber Plate (12 Adapters)	01 = SC-APC 02 = SC-UPC	01 = 1 02 = 2 04 = 4 06 = 6 12 = 12	N = None C = Cable Entry Clamp E = External Ground D = External Ground and Cable Entry Clamp Installed



11.19" x 8.38" x 3.19"

Up to 12 Fibers, up to 50' Slack Storage, Mid-Span LB Conduit Ports

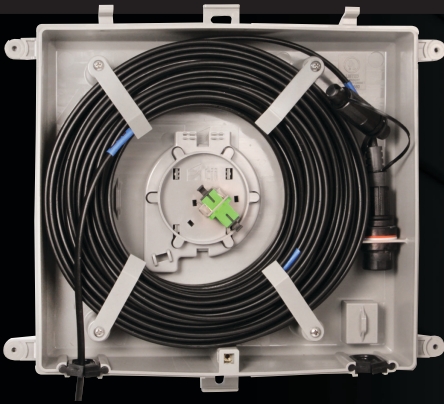
507F	-XX	-XX	-XX
	SERIES	ADAPTER TYPE	NO. OF PORTS
	01 = Fiber Plate (1, 2, or 4 adapters) 02 = Fiber Plate (6 adapters) 03 = 1.5" Fiber Storage Tray 04 = Fiber Plate (12 adapters)	01 = SC-APC 02 = SC-UPC 12 = MTP/MPO	01 - 12



12.54" x 8.39" x 3.19"

Designed for rigid drop fiber installations with up to 3 inch bend radius

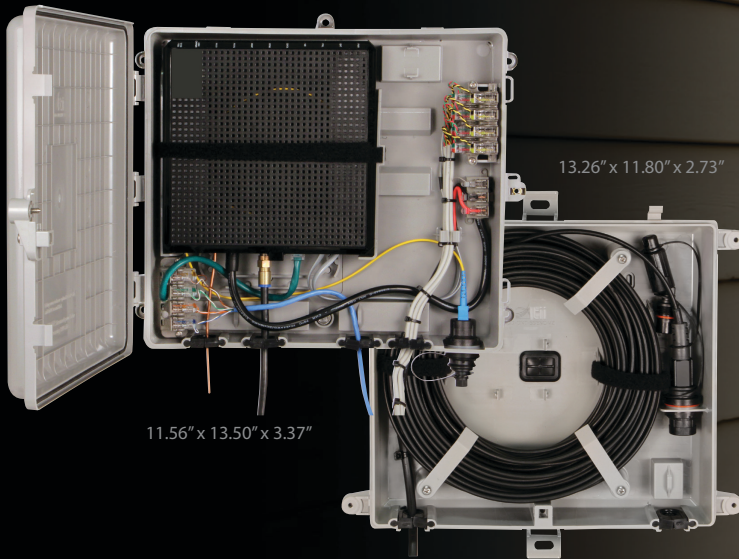
508F	-XX	-XX	-XX	-X
	SERIES	ADAPTER TYPE	NO. OF ADAPTERS	CONFIGURATION OPTIONS
	01 = Fiber Plate (1, 2, or 4 adapters only) 02 = Fiber Plate (6 Adapters) 03 = 1.5" Fiber Storage Tray 04 = Fiber Plate (12 Adapters)	01 = SC/APC 02 = SC/UPC 03 = LC/APC 04 = LC/UPC	01 = 1 04 = 4 02 = 2 06 = 6 03 = 3 12 = 12	N = None C = Cable Entry Clamp E = External Ground D = External Ground & Cable Entry Clamp Installed



10.73" x 12.63" x 3.0"

Up to 90 ft. of slack storage with accommodations for up to 12 fiber terminations and one hardened OSP termination

509F	-XX	-XX	-XX				
ADAPTER MOUNTING OPTIONS		ADAPTER TYPE	NO. OF PORTS				
00	= No Plate	00	= None	00	= 0	04	= 4
01	= Fiber Plate (1, 2, or 4 adapters only)	01	= SC-APC	01	= 1	06	= 6
		02	= SC-UPC	02	= 2	12	= 12
				04	= 4		



13.26" x 11.80" x 2.73"

11.56" x 13.50" x 3.37"

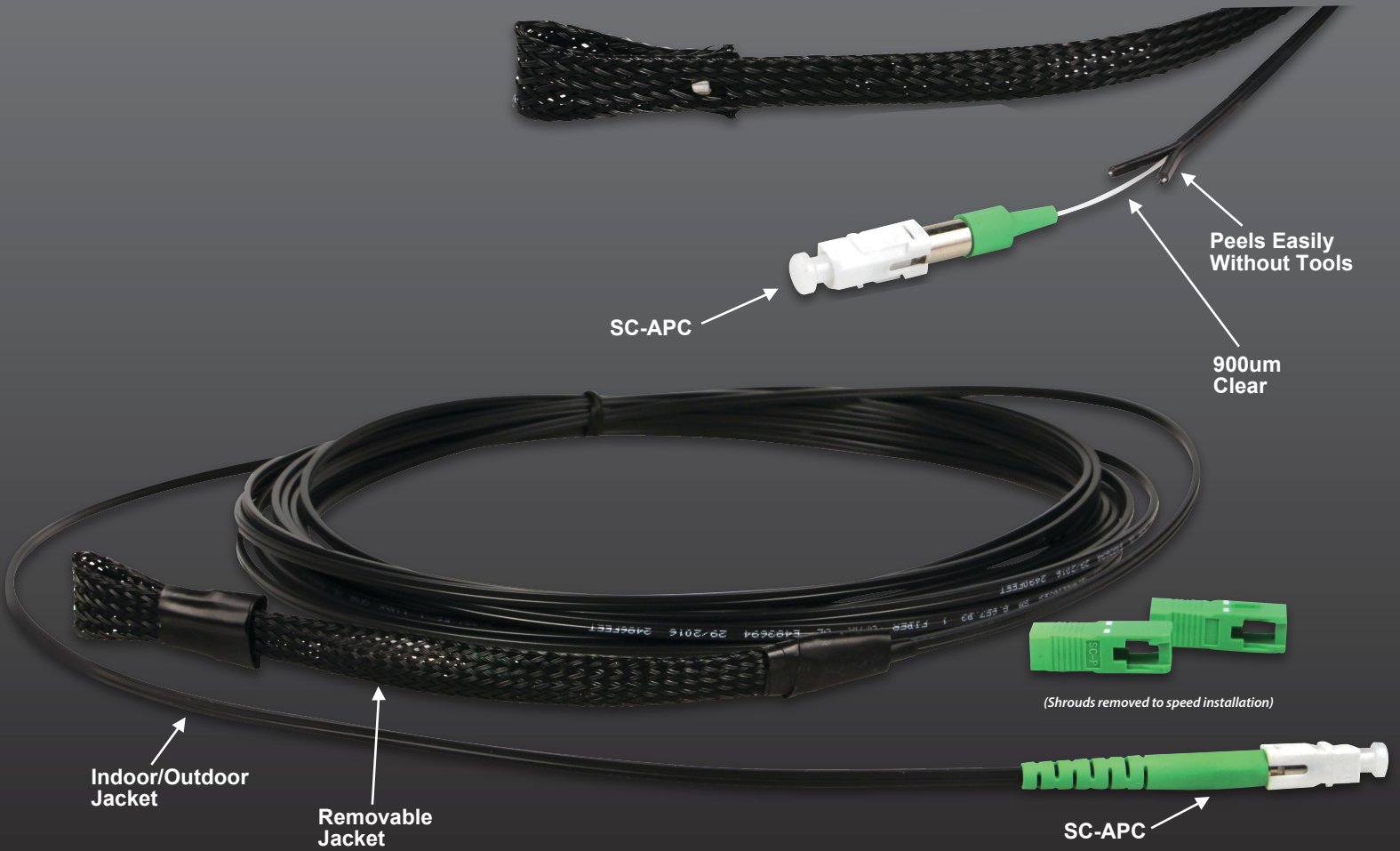
OUTDOOR OPTICAL NETWORK TERMINAL ENCLOSURE

Houses the components of a typical FTTH installation. Designed to mount to a wall, or directly on optional slack storage enclosure which accommodates up to 75 feet of fiber.

- OD-ONT-ENC** Outdoor Optical Network Terminal Enclosure
- OD-ONT-SSENC** Outdoor Optical Network Terminal Slack Storage Enclosure – no cover
- OD-ONT-SSC** Cover for OD-ONT-SSENC

THE 509F AND OD-ONT-SSENC PRODUCTS ARE MADE SUBJECT TO A LICENSE FROM CORNING OPTICAL COMMUNICATIONS LLC.

For Outdoor to Indoor Transitions



PEELABLE MICRODROP CABLE & ACCESSORIES

Tii's MicroDrop cable is an indoor/outdoor rugged fiber optic service cable. When transitioning from outside to an inside living or work space, the outer jacket is easily removed to expose a clear 900uM subunit that is almost invisible when routing indoors.

Perfect transition cable from an outdoor FTTH transition enclosure to the customer ONT connection point providing the best signal quality with least visual impact to the premise.

Pre-Connectorized

Z1K9R8-SASA025F-02	MicroDrop OFNR Peelable SC-APC/SC-APC 25 ft.
Z1K9R8-SASA050F-02	MicroDrop OFNR Peelable SC-APC/SC-APC 50 ft.
Z1K9R8-SASA075F-02	MicroDrop OFNR Peelable SC-APC/SC-APC 75 ft.
Z1K9R8-SASA100F-02	MicroDrop OFNR Peelable SC-APC/SC-APC 100 ft.

Please contact Tii Customer Service for units without break-out to remove outer jacket

Single and Dual Bulk Fiber and Installation Accessories

FRB-Z1K9R8-610M	Pull Box Single-Fiber Peelable MicroDrop Cable 2000 ft. (610M)
FRB-Z2K9R8-457M	Pull Box 2-Fiber Peelable MicroDrop 1500 FT (457 M)
Z1K9R8-183M	Disposable Reel Single-Fiber Peelable MicroDrop 600 FT
Z2K9R8-122M	Disposable Reel 2-Fiber Peelable MicroDrop 400 FT
HW-CLIP-01	Clear Vinyl Siding Clip for Peelable Drop Cable
HW-CLIP-02	Screw Type Clip for Peelable Drop Cable
FRS-BC	Belt Clip for 400/600 FT Peelable MicroDrop Cable
OCWS	MicroDrop Cable Wall Sleeve with Universal Cap



FIBER PATHWAY SYSTEM & ACCESSORIES

Tii's Fiber Pathway System (FPS) provides aesthetically pleasing fiber protection for routing 900um fiber within indoor residential or office applications. Featuring a high bonding adhesive backing material with an easy-peel liner, installation is as simple as peel and stick. When used in conjunction with Tii's Peelable MicroDrop products, the FPS provides a labor and time optimized solution for bringing fiber drop into the living unit, connecting to a fiber jack or directly to the ONT.

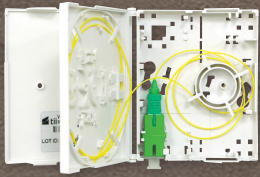


FPS-S-32	Fiber Pathway Strip 32"
FPS-C-32	Fiber Pathway Cover 32"
FPS-FC90	Fiber Pathway Flat Corner 90 Degree Radius Control
FPS-EC90	Fiber Pathway Elevated Corner 90 Degree Radius Control
OCWS	Wall Sleeve with Universal Cap
FPT-01	Fiber Pathway Installation Tool

For Indoor Transitions

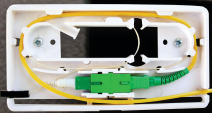
CCP SERIES - CUSTOMER CONNECTION POINT

Compact, indoor wall mount fiber termination and distribution terminals typically used in FTTD, FTTH and MDU ONT access points.



Greenfield Installation: Separate Splice Tray Door with Slack Storage, Hinged Top Cover with Hex Lock Screw

CCP1R1SAN	1 Port SC APC Wall Terminal
CCP1R1SA9	1 Port SC APC Wall Terminal with Splice Chip and 900um Pigtail
CCP1R2SAN	2 Port SC APC Wall Terminal
CCP1R2SA9	2 Port SC APC Wall Terminal with Splice Chip and 900um Pigtail



Typically Used As MDU Point-of-Entry. One-Pass Fiber Pathway Compatible

CCP2R1SAN	1 Port SC APC Wall Terminal
------------------	-----------------------------

Multiple Cable Entry Options



CCP3R1SAN	1 Port SC APC Wall Terminal
CCP3R1SA9	1 Port SC APC Wall Terminal with Splice Chip and 900um Pigtail
CCP3R2SAN	2 Port SC APC Wall Terminal
CCP3R2SA9	2 Port SC APC Wall Terminal with Splice Chip and 900um Pigtail

Flexible Mounting Options: Wall, Baseboard, Wall Plate Mount



CCP5R1SSNP	1 Port SC APC Wall Terminal with Internal Shutter. Includes Wallplate.
CCP5R1SANP	1 Port SC APC Wall Terminal. Includes Wallplate.
CCP5R1SAN	1 Port SC APC Wall Terminal
CCP5-WP	CCP5 Wall Plate

Features Secondary Keystone or SpeedStar™ Port for Optional Connections Such As Coax, RJ-45 or RJ-11



CCP6R1SSNK	1 Port SC APC Wall Terminal with Internal Shutter
CCP6R1SANK	1 Port SC APC Wall Terminal

Low Profile, Splice Option, Select ONT Interface

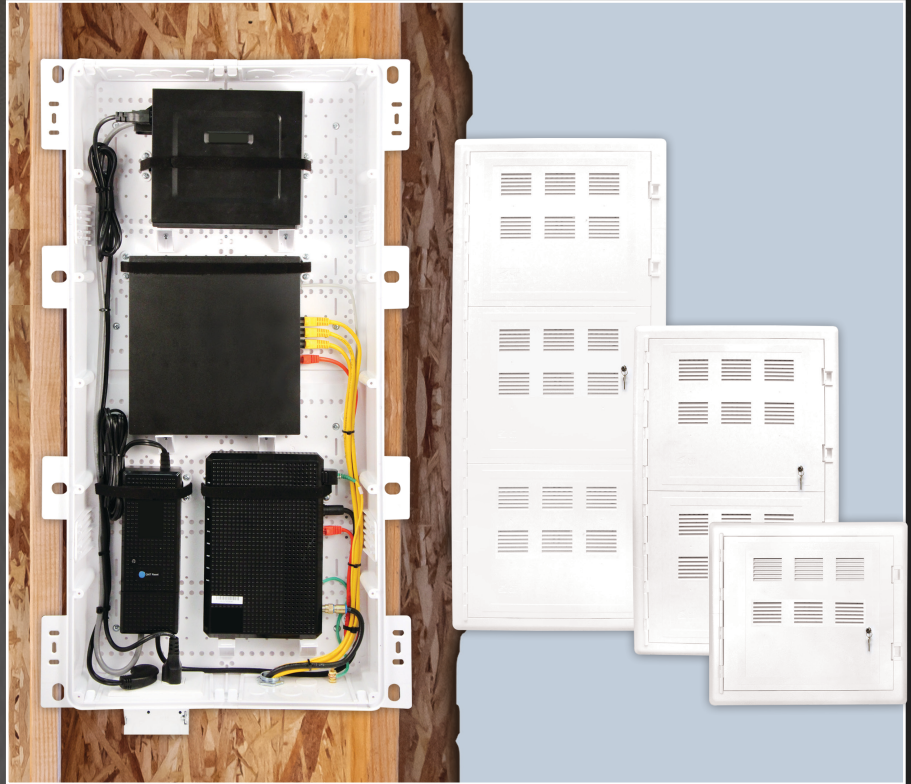


CCP7-ONT	1 Port SC APC Wall Terminal with Internal Shutter Includes Base and Select ONT Mounting Plate
CCP7-BCVR	1 Port SC APC Wall Terminal with Internal Shutter Includes Base and Low Profile Cover
CCP7-BCVR-LC	2 Port LC APC Wall Terminal with Internal Shutter Includes Base and Low Profile Cover
CCP7-CVR	Low Profile Cover

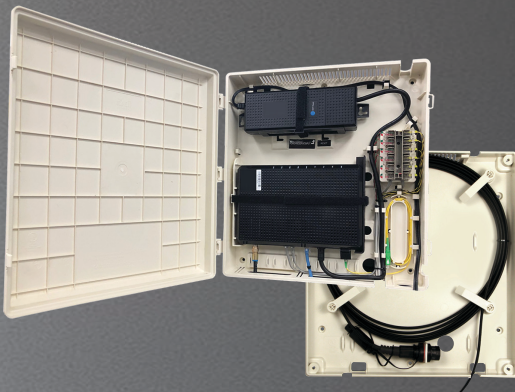
STRUCTURED WIRE FLUSH MOUNT CLOSURES

Available in 15", 30" and 45" lengths, Tii's Flush Mount Closures provide an ideal solution to centrally locate equipment used to deliver voice, data, video, audio or wireless services at the premise. Manufactured from high performance engineering thermoplastic the FMC Series will not impede RF signals where wireless networks are deployed.

Provides ease of installation and efficient organization of ONTs, battery back-up and residential gateways. Modular design and rear mounting pattern give a wide latitude for hardware locations with ample ventilation to keep equipment cool. 180 degree hinged cover allows for quick and easy access to network equipment which can be mounted in multiple locations by means of Velcro straps, shelving support clips and other cable management components.



FMC-15	15 Inch Base, Cover, Installation Hardware and Paint Shield
FMC-30	30 Inch Base, Cover, Installation Hardware and Paint Shield
FMC-45	45 Inch Base, Cover, Installation Hardware and Paint Shield
FMC-RGSHELF	Accessory Kit: (1) 8.17" x 4.18" Shelf, (2) Velcro Tie Clips, (22") 1/2 Inch Velcro, Mounting Screws
FMC-A1	Component Mounting Accessory Kit: Ground Stud, Hardware, Mini-Shelves, Velcro and Velcro/Wire Tie Clip
FMC-LK	Cam Lock Kit
FMC-MP	Door Mounting Plate Kit
FMC-PLT-1	Gang Box Plate
FMC-PLT-2	Conduit Plate



INDOOR OPTICAL NETWORK TERMINAL ENCLOSURE

Indoor enclosure designed to hold the components of a typical FTTH installation. Designed to mount to a wall or on an optional slack storage enclosure that can accommodate greater than 50' of flat drop fiber.

ONT-ENC-LA	Optical Network Terminal Enclosure
ONT-SSENC-LA	Optical Network Terminal Slack Storage Tray for ONT-ENC-LA



- » Industry Leader with over 50 Years Experience
- » World Class Manufacturing Infrastructure
- » State-of-the-art Technology
- » Global Distribution Network



Tii Technologies Inc.

Corporate Headquarters:
141 Rodeo Drive
Edgewood, NY 11717
Phone: 631.789.5000
Fax: 631.789.5063
Toll Free: 888.844.4720
sales@tiitech.com
www.tiitech.com

INFORMATION CONTAINED IN THIS PUBLICATION IS PROVIDED ONLY FOR YOUR CONVENIENCE AND IS SUBJECT TO CHANGE WITHOUT NOTICE. TII TECHNOLOGIES MAKES NO REPRESENTATIONS OR WARRANTIES OF ANY KIND WHETHER EXPRESS OR IMPLIED, WRITTEN OR ORAL, STATUTORY OR OTHERWISE, RELATED TO THE INFORMATION, INCLUDING BUT NOT LIMITED TO ITS CONDITION, QUALITY, PERFORMANCE, MERCHANTABILITY OR FITNESS FOR PURPOSE; AND TII TECHNOLOGIES DISCLAIMS ALL LIABILITY ARISING FROM THE USE OF THIS INFORMATION.