



60HZ

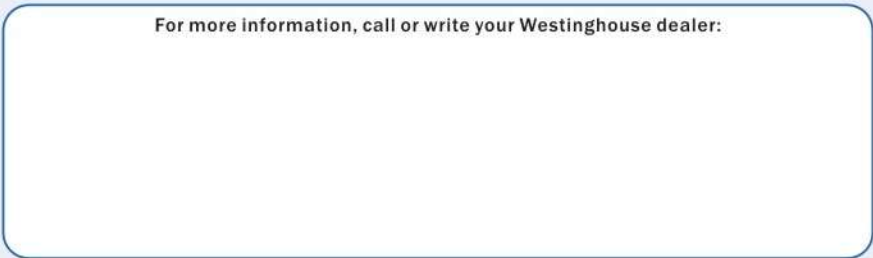
**Air Conditioners
Mini-Split Products**




- Mini-Split Air Conditioners
- Mini-Split Heat Pumps
- Horizontal Condensing Units
- Plastic Casing Condensing Units
- Ducted Type
- Floor Ceiling
- Cassette
- Universal Outdoor

You can be sure...if it's Westinghouse 

For more information, call or write your Westinghouse dealer:



 Westinghouse and You can be sure...if it's Westinghouse are trademarks of Westinghouse Electric Corporation and used under license to NORDYNE.

Specifications and illustrations subject to change without notice and without incurring obligation.

The designs and specifications might be changed without prior notice for product improvement

www.westinghousevac-intl.com

© 2009

Product Line Up

60Hz		CAPACITY RANGE								REFRIGERANT & Frequency	
		9000BTU	12000BTU	18000BTU	24000BTU	30000BTU	36000BTU	48000BTU	60000BTU		
Wall Mounted R-22		●	●	●	●	●	●				P09
Inverter R-410A		●	●	●	●						P11
High EER R-410A		●	●	●	●						P13
Multi-Split				●	●		●	●			P15
Plastic Outdoor Unit			●	●	●						P17
Floor Ceiling			●	●	●	●	●	●	●		P19
Cassette				●	●		●	●			P21
FCU 1-Uncased				●	●		●	●	●	 	P23
FCU 1-Cased					●	●	●	●	●	 	P23
FCU 2 - Med ESP		●	●	●	●						P25
FCU 2 - Low ESP			●	●	●		●	●	●		P25
Universal Outdoor				●	●		●	●	●		P27

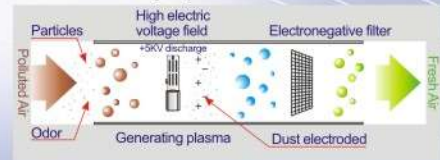
OPTIONAL FEATURES

Health & Environment



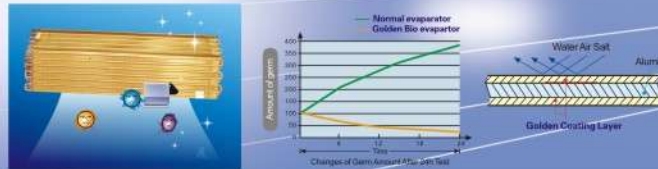
Plasma Filter

The Plasma can create an ionization zone. When the polluted air gets through the ionization zone, the microscopic contaminants can be eliminated efficiently. It can reduce not only the dust, but also reduce smoke, housemites, pollen, pet fur, and then reduce user's allergy and asthma symptoms.



Golden Fin

It is an anti bacteria and anti corrosive coating on heat exchanger. It can prevent bacteria and germs breeding inside, and withstand the salty air, dirty water and other corrosion as well.



Ionizer

Ionizer can create more than 1,000,000/cm³ anions, which can stimulate the blood circulation system, improve lung function and prevent respiratory passage illnesses.



Auto Clean

One of the main causes of odour emitting from an air conditioner is the mould and bacteria breeding on the evaporator. Auto Clean function can clean the evaporator automatically and reduce the possibility of mould and bacteria breeding inside the air conditioner. On the other hand, cleaning evaporator helps the air conditioner keep working efficiently and save energy.



Nano Silver Cross Fan

There is a nano silver cross coating on the indoor cross fan. It can suppress bacteria breeding efficiently.



Total Air Solutions

Air conditioners made not only to cool and heat, Westinghouse wall split offers you total solutions to indoor air quality.



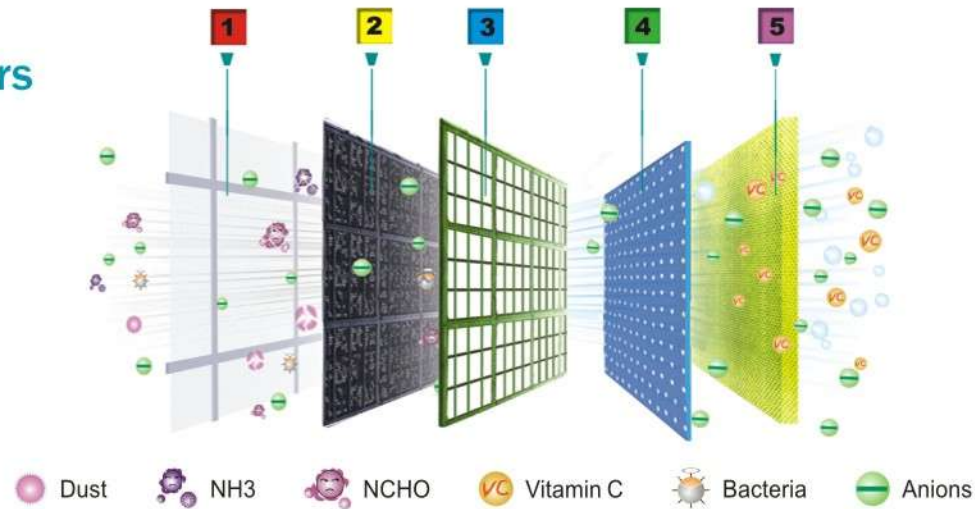
Multi-Filters

Multi Filters System can provide you different kinds of filters to secure the indoor air quality. It includes Nano Silver Filter, Active Carbon Filter, Bio Filter, Vitamin C Filter, etc. Multi Filter can efficiently eliminate dust and kill different kinds of bacteria. Also Vitamin C Filter can bring VC into your room air.



OPTIONAL FEATURES Health & Environment

Multi-Filters



1 Anti-Dust Filters

Dust filter is the traditional filter which can catch most small dust particles and easily to wash and clean.

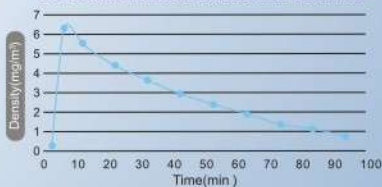
2 Active Carbon Filters

Active carbon filter electrostatic filter can absorb many kinds of odors such as Ammonia(NH₃)and deactivate harmful chemical gas such as formaldehyde(HCHO).It can also absorb small dust particle,smoke and prevent allergic diseases.

NH₃ Removal Ratio of Active Carbon Filter

Time (min)	Density of NH ₃ (mg/m ³)	Nh ₃ Removal Ratio (mg/m ³)
0	3.17	—
30	0.51	83.91
60	0.28	91.17
120	0.22	93.06

Dust Removal Ratio of Electrostatic Fibre Filter



3 BIO Filters

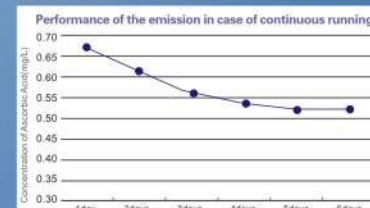
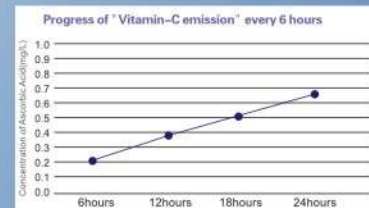
BIO filter has a high photo catalyzing power, which can absorb and deactivate unpleasant odors, virus, formaldehyde and other chemical vapors. The Nano-meter catalyst can restore the deodorizing function by only exposing to the sunlight.

4 Nano Silver Filters

Nano silver filter can destroy the cell-film of bacterium or strongly absorbing the SH group of the protein in bacterium, the killing rate is higher than 99%.

5 Vitamin C Filters

Vitamin C filter is using VC emission material, which can bring Vitamin C to the air, soften the skin and reduce your pressure, like a spa of air.



OPTIONAL FEATURES Intelligence & Efficiency



Sleep Mode

In sleep mode, the setting temperature increases (cooling) 1 °C or decreases (heating) 2 °C per hour automatically in first two hours after setting sleep mode, which helps achieve for the user the most comfortable temperature and save energy as well.



Turbo

Turbo function can cool down or warm up the room to the setting temperature in a shortest time.



Auto Restart

In case of power off, the microcomputer chip will memorize the running mode, and air con can restart with previous running mode automatically when power resumes.



Strong Dehumidification

It is usually used in rainy days or damp area. By operating dehumidifying mode, the room can achieve comfortable humidity level for the user without reducing room temperature.



Anti-rust Outdoor Casing

The outdoor unit casing is made from electrolytic zinc steel sheet.



Inner Grooved Copper Tube

Superior inner-grooved copper tube makes refrigerant flow much faster in the copper tube, and enhance heat-exchange efficiency up to 30%-50% compared with the traditional smooth copper tube.



Low Noise Air Flow System Large Diameter Cross Fan

Without decreasing the flow volume, the large diameter cross fan can reduce indoor unit's noise greatly.



Valve Protection Cover

It protects the valves and prevents waters.



Temperature Compensation (heating mode)

During heating mode, the ceiling temperature is usually quite higher than the floor temperature. So when the indoor unit is running at a temperature set by user, the floor temperature is actually lower than the setting one. But with temperature compensation function, the temperature difference can be eliminated, and you can enjoy the real temperature setting by you.



Anti-cold Air Function

When starting the heating function, the indoor fan starts only when the pipe temperature is high enough, so as to avoid the uncomfortable cold air blowing to the user.



Self-diagnosis and Auto-protection Function

With self-diagnosis function, errors will be detected by microcomputer chips and displayed by LED on the indoor unit. Protection will then be automatically taken.



Hydrophilic Aluminum Fin

The hydrophilic aluminum fin of the evaporator and condenser can make the condensed water flow freely between the fins and then help to improve the cooling efficiency. Also it can improve the heating efficiency by accelerating the defrosting process.



Condenser Heating Kits

Condenser heating kits help the condenser free from getting frozen during heating mode in low temperature winter, then the air conditioner can run heating mode properly.



Low Ambient Kit

The unit can be operated in cooling mode at low ambient temperature conditions.



LED Display

It helps the user monitor and operate the unit clearly and easily.



Soft Start Kit

The starting current is limited within 45A. This is to avoid the sudden high current when starting running air conditioner, and then protect the electricity equipment.



Easy Wiring Connection

The integrated terminal board contributes to a quick and simple cable connecting between the indoor and outdoor unit.



Compressor Heating Kits

During winter with extremely low temperature, the compressor is easy to get frozen and then hardly get started. But with compressor heating kits, the compressor can be warmed up slowly and then get started properly.



Quick Connector

With quick connector system consumers can install the air conditioner by themselves. They just need to connect easily the specially designed copper pipe connector and signal wire connector. And it does not require professional tools. Quick connector can save a lot of time and installation fee.

Control Type

Remote Control



60HZ Series
 Wall Mounted R-22
 Inverter R-410A
 High EER R-410A
 Multi-Split
 Plastic Outdoor Unit
 Floor Ceiling
 Ducted-Type
 Cassette
 Universal Outdoor

Wired Control



Wall Mounted R-22



R22 60HZ

- | | |
|--------------|--------------|
| WIWXL-09KNW1 | WIWPL-09KNW1 |
| WCHXL-09KCR1 | WCHPL-09KCR1 |
| WIWXL-12KNW1 | WIWPL-12KNW1 |
| WCHXL-12KCR1 | WCHPL-12KCR1 |
| WIWXL-18KNW1 | WIWPL-18KNW1 |
| WCHXL-18KCR1 | WCHPL-18KCR1 |
| WIWXL-24KNW3 | WIWPL-24KNW3 |
| WCHXL-24KCR3 | WCHPL-24KCR3 |
| WIWXL-30KNW2 | WIWPL-30KNW3 |
| WCHXL-30KCR2 | WCHPL-30KCR3 |
| WIWXL-36KNW2 | WIWPL-36KNW3 |
| WCHXL-36KCR2 | WCHPL-36KCR3 |

Features

Standard

- Anti-Dust Filters
- Sleep Mode
- Temperature Compensation
- All-cool Air Function
- Self-dignosis and Auto-protection
- Inner Gloved Copper Tube
- Hydrophilic Aluminium Fin

Optional

- Auto Restart
- Ionizer
- Light Wave
- Golden Fin
- Vitamin C Filters
- Nano Silver Filters
- BIO Filters
- Active Carbon Filters
- Nano Silver Cross Fan



SPECIFICATIONS: AIR CONDITIONING

R22



Model	Indoor		WIWXL-09KNW1	WIWXL-12KNW1	WIWXL-18KNW1	WIWXL-24KNW3	WIWXL-30KNW2	WIWXL-36KNW2
	Outdoor		WCHXL-09KCR1	WCHXL-12KCR1	WCHXL-18KCR1	WCHXL-24KCR3	WCHXL-30KCR2	WCHXL-36KCR2
Nominal Capacity	Cooling	Btu/h	9000	12000	18000	24000	30000	36000
Power Supply	V / Ph / Hz		208-230 / 1 / 60					
Rated Load Current	Amps.		4.5	5.9	8.6	12.4	16.6	16.8
Starting Current	Amps.		13	18	27	40	49	50
Airflow	CFM		270	330	460	625	700	700
Sound Level	dB (A)		38	40	43	50	52	52
Compressor	Type		Rotary					
Refrigerant	Type		R - 22					
Piping Connection	Liquid	Inch	1/4	1/4	1/4	3/8	3/8	3/8
	Suction	Inch	3/8	1/2	1/2	5/8	5/8	5/8
Dimension (W x H x D)	Indoor	MM	800x290x196	800x290x196	860x292x205	1080x330x220	1250x325x230	1250x325x230
	Outdoor	MM	600x480x250	700x540x255	770x520x280	910x690x370	880x790x360	880x790x360
Weight (Net)	Indoor	Kg	10	10	12	15	17	17
	Outdoor	Kg	25	29	39	59	68	78

SPECIFICATIONS: HEAT PUMP

R22

Model	Indoor		WIWPL-09KNW1	WIWPL-12KNW1	WIWPL-18KNW1	WIWPL-24KNW3	WIWPL-30KNW3	WIWPL-36KNW3
	Outdoor		WCHPL-09KCR1	WCHPL-12KCR1	WCHPL-18KCR1	WCHPL-24KCR3	WCHPL-30KCR3	WCHPL-36KCR3
Nominal Capacity	Cooling	Btu/h	9000	12000	18000	24000	30000	36000
	Heating	Btu/h	9000	12000	18000	25000	31000	37000
Power Supply	V / Ph / Hz		208 - 230 / 1 / 60					
Rated Load Current	Amps.		4.2	5.7	8.6	12.8	16.6	16.5
Starting Current	Amps.		13	18	27	40	49	50
Airflow	CFM		270	330	460	625	700	700
Sound Level	dB (A)		38	40	43	50	52	52
Compressor	Type		Rotary					
Refrigerant	Type		R - 22					
Piping Connection	Liquid	Inch	1/4	1/4	1/4	3/8	3/8	3/8
	Suction	Inch	3/8	1/2	1/2	5/8	5/8	5/8
Dimension (W x H x D)	Indoor	MM	800x290x196	800x290x196	860x292x205	1080x330x220	1250x325x230	1250x325x230
	Outdoor	MM	600x480x250	700x540x255	770x520x280	910x690x370	880x790x360	880x790x360
Weight (Net)	Indoor	Kg	10	10	12	15	17	17
	Outdoor	Kg	26	30	40	60	69	79

Inverter R-410A



60HZ

- | | |
|--------------|--------------|
| WIWXN-09KNW1 | WIWPN-09KNW1 |
| WCHXN-09KCR1 | WCHPN-09KCR1 |
| WIWXN-12KNW1 | WIWPN-12KNW1 |
| WCHXN-12KCR1 | WCHPN-12KCR1 |
| WIWXN-18KNW1 | WIWPN-18KNW1 |
| WCHXN-18KCR1 | WCHPN-18KCR1 |
| WIWXN-24KNW1 | WIWPN-24KNW1 |
| WCHXN-24KCR1 | WCHPN-24KCR1 |

Features

Standard



Optional



SPECIFICATIONS: AIR CONDITIONING



Model	Indoor		WIWXN-09KNW1	WIWXN-12KNW1	WIWXN-18KNW1	WIWXN-24KNW1
	Outdoor		WCHXN-09KCR1	WCHXN-12KCR1	WCHXN-18KCR1	WCHXN-24KCR1
Power Supply	V / Ph / Hz		208-230 / 1 / 60			
Nominal Capacity	Cooling	Btu/h	9000(4000-10200)	12000(4500-12600)	17000(6800-18000)	2200(7800-24000)
	Input	Watt	800(270-1100)	1050(340-1350)	1750(320-2000)	2100(580-2250)
	Rated Current	Amps.	3.40(1.3-5.0)	4.8(1.6-6.1)	7.1(1.4-9.2)	9.6(2.7-10.3)
	EER		4.13	4.13	4.13	4.13
Max. Input Consumption	Watt	1900	2000	2400	3520	
Max. Current	Amps.	8.8	8.87	10.65	15	
Airflow	CFM	260	300	500	640	
Sound Level	dB (A)	38	40	43	50	
Compressor	Type	Rotary				
Refrigerant	Type	R - 410A				
Piping Connection	Liquid	Inch	1/4	1/4	1/4	3/8
	Suction	Inch	3/8	1/2	1/2	5/8
Dimension (W x H x D)	Indoor	MM	800x290x196	800x290x196	860x292x205	1080x330x220
	Outdoor	MM	770x520x280	770x520x280	770x520x280	880x790x360
Weight (Net)	Indoor	Kg	10	10	12	15
	Outdoor	Kg	32	37	41	70

SPECIFICATIONS: HEAT PUMP



Model	Indoor		WIWPN-09KNW1	WIWPN-12KNW1	WIWPN-18KNW1	WIWPN-24KNW1
	Outdoor		WCHPN-09KCR1	WCHPN-12KCR1	WCHPN-18KCR1	WCHPN-24KCR1
Power Supply	V / Ph / Hz		208-230 / 1 / 60			
Nominal Capacity	Cooling	Btu/h	9000(4000-10200)	12000(4500-12600)	17000(6800-18000)	2200(7800-24000)
	Input	Watt	800(270-1100)	1050(340-1350)	1750(320-2000)	2100(580-2250)
	Rated Current	Amps.	3.40(1.3-5.0)	4.8(1.6-6.1)	7.1(1.4-9.2)	9.6(2.7-10.3)
	EER		4.13	4.13	4.13	4.13
Nominal Capacity	Heating	Btu/h	10000(4700-15000)	13000(5000-17000)	19000(7500-23000)	26000(8000-28000)
	Input	Watt	800(300-1600)	1050(350-1600)	1640(440-2400)	2250(520-2700)
	Rated Current	Amps.	3.55(1.4-7.3)	4.7(1.6-7.0)	7.4(2.0-10.8)	11(2.4-12.1)
	COP		3.66	3.63	3.40	3.37
Max. Input Consumption	Watt	1900	2000	2400	3520	
Max. Current	Amps.	8.8	8.87	10.65	15	
Airflow	CFM	260	300	500	640	
Sound Level	dB (A)	38	40	43	50	
Compressor	Type	Rotary				
Refrigerant	Type	R - 410A				
Piping Connection	Liquid	Inch	1/4	1/4	1/4	3/8
	Suction	Inch	3/8	1/2	1/2	5/8
Dimension (W x H x D)	Indoor	MM	800x290x196	800x290x196	860x292x205	1080x330x220
	Outdoor	MM	770x520x280	770x520x280	770x520x280	880x790x360
Weight (Net)	Indoor	Kg	10	10	12	15
	Outdoor	Kg	32	37	41	70

High EER R-410A



60HZ

- | | |
|--------------|--------------|
| WIWXM-09ANW1 | WIWPM-09ANW1 |
| WCHXM-09ACR1 | WCHPM-09ACR1 |
| WIWXM-12ANW1 | WIWPM-12ANW1 |
| WCHXM-12ACR1 | WCHPM-12ACR1 |
| WIWXM-12KNW1 | WIWPM-18KNW1 |
| WCHXM-12KCR1 | WCHPM-18KCR1 |
| WIWXM-18KNW1 | WIWPM-24KNW3 |
| WCHXM-18KCR1 | WCHPM-24KCR3 |
| WIWXM-24KNW2 | |
| WCHXM-24KCR2 | |

Features

Standard



Optional



SPECIFICATIONS: AIR CONDITIONING



Model	Indoor		WIWXM-09ANW1	WIWXM-12ANW1	WIWXM-12KNW1	WIWXM-18KNW1	WIWXM-24KNW2
	Outdoor		WCHXM-09ACR1	WCHXM-12ACR1	WCHXM-12KCR1	WCHXM-18KCR1	WCHXM-24KCR2
Power Supply	V / Ph / Hz		115 / 1 / 60			208-230 / 1 / 60	
Nominal Capacity	Cooling	Btu/h	9000	12000	12000	18000	24000
	Input	Watt	750	950	1000	1450	1990
	Rated current	Amps.	6.9	8.3	4.3	6.8	8.6
	EER		3.33	3.37	3.50	3.5	3.5
Starting Current	Amps.		20.7	16.5	26	30	52
Airflow	CFM		230	365	380	650	700
Sound Level	dB (A)		38	42	42	50	52
Compressor	Type		Rotary				
Refrigerant	Type		R - 410A				
Piping Connection	Liquid	Inch	1/4	1/4	1/4	1/4	3/8
	Suction	Inch	3/8	1/2	1/2	1/2	5/8
Dimension (W x H x D)	Indoor	MM	800x290x196	860x292x205	860x292x205	1080x330x220	1250x325x230
	Outdoor	MM	700x540x255	790x540x245	790x540x245	845x680x310	880x790x360
Weight (Net)	Indoor	Kg	10	10	10	15	17
	Outdoor	Kg	25	31	31	49	68

SPECIFICATIONS: HEAT PUMP



Model	Indoor		WIWPM-09ANW1	WIWPM-12ANW1	WIWPM-18KNW1	WIWPM-24KNW3	
	Outdoor		WCHPM-09ACR1	WCHPM-12ACR1	WCHPM-18KCR1	WCHPM-24KCR3	
Power Supply	V / Ph / Hz		115 / 1 / 60			208-230 / 1 / 60	
Nominal Capacity	Cooling	Btu/h	9000	12000	18000	24000	
	Input	Watt	750	950	1450	1990	
	Rated current	Amps.	6.9	8.3	6.8	8.6	
	EER		3.33	3.37	3.5	3.5	
Nominal Capacity	Heating	Btu/h	9000	12000	18000	24000	
	Input	Watt	750	930	1500	2000	
	Rated current	Amps.	6.9	8.1	6.4	8.7	
	COP		3.33	3.44	3.46	3.5	
Starting Current	Amps.		20.7	16.5	30	52	
Airflow	CFM		230	365	650	700	
Sound Level	dB (A)		38	42	50	52	
Compressor	Type		Rotary				
Refrigerant	Type		R - 410A				
Piping Connection	Liquid	Inch	1/4	1/4	1/4	3/8	
	Suction	Inch	3/8	1/2	1/2	5/8	
Dimension (W x H x D)	Indoor	MM	800x290x196	860x292x205	1080x330x220	1250x325x230	
	Outdoor	MM	700x540x255	790x540x245	845x680x310	880x790x360	
Weight (Net)	Indoor	Kg	10	10	15	17	
	Outdoor	Kg	26	37	50	70	

Multi-Split



R22 60HZ

- WCMXL-18KCR3
- WCMXL-24KCR3
- WCMXL-36KCR3
- WCMXL-48KCR3
- WCMXL-48KCR3 (21224)

Features

Standard

- 
- 
- 
- 
- 
- 
- 

Optional

- 
- 
- 
- 
- 
- 
- 
- 
- 
- 

SPECIFICATIONS: AIR CONDITIONING

R22



Model		WCMXL-18KCR3	WCMXL-24KCR3	WCMXL-36KCR3	WCMXL-48KCR3	WCMXL-48KCR3 (21224)	
Power supply	V-Ph-Hz	208-230 / 1 / 60Hz					
Cooling	Capacity	Btu/h	9000 + 9000	12000 + 12000	18000 + 18000	24000 + 24000	2 x 12000 + 24000
	Input	W	900 + 900	1150 + 1150	1680 + 1680	2420 + 2420	2 x 1150 + 2420
	Rated current	A	4.1 + 4.1	5.4 + 5.4	7.5 + 7.5	10.5 + 10.5	2 x 5.4 + 10.5
	EER		2.72	2.89	2.77	2.69	2.69
Max. input consumption	W	2250	3000	4000	6500	6500	
Max. current	A	9.98	13.31	17.75	28.84	28.84	
Starting current	A	20	28	43	65*2	65*2	
Compressor	Type		Rotary	Rotary	Rotary	Rotary	
	Capacity	W	2720	3706	5370	7270	7270
	Input	W	900	1193	1720	2315	2315
	Rated current(RLA)	A	3.97	5.4	7.59	10.3	2 x 5.4 + 10.3
Locked rotor Amp(LRA)	A	20	28	43	65	2 x 28 + 65	
Noise level	dB(A)	57	58	59	65	65	
Unit dimension (WxHxD)	mm	813 x 680 x 310	845 x 680 x 310	880 x 790 x 360	890 x 1230 x 380	890 x 1230 x 380	
Packing (WxHxD)	mm	1010 x 765 x 430	1010 x 765 x 430	1030 x 890 x 480	945 x 1340 x 455	945 x 1340 x 455	
Net weight	Kg	50	56	78	95	95	
Gross weight	Kg	55	61	88	105	105	
Refrigerant type		R22	R22	R22	R22	R22	
Refrigerant charge	g	820 + 820	1000 + 1000	1390 + 1390	1600 + 1600	2 x 100 + 1600	
Design pressure	Mpa	2.7	2.7	2.7	2	2	
Refrigerant Pipe	Liquid side	Inch	1/4	1/4	1/4	3/8	2 x 1/4 + 3/8
	Gas side	Inch	3/8	1/2	1/2	5/8	2 x 1/2 + 5/8
	Max. refrigerant pipe length	m	15	15	15	15	15
	Max. difference in level	m	7	7	7	7	7

Plastic Outdoor Unit



R22 60HZ

- WCHXC-12KCR1
- WCHXC-18KCR1
- WCHXC-24KCR3



Rlastic Casing With A Gold Coated Fin



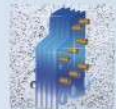
Tube



Flexible Wiring Connection



Powerful Compressor



Hydrophilic Aluminum Fins

SPECIFICATIONS: AIR CONDITIONING

R22



Model	Outdoor	WCHXC-12KCR1	WCHXC-18KCR1	WCHXC-24KCR3	
Power Supply	V / Ph / Hz	220 - 240 / 1 / 60			
Nominal Capacity	Cooling	Btu/h	12000	18000	24000
	Input	Watt	1185	1890	2260
	Rated current	Amps.	5.5	7.7	10.4
	EER		9.28	10.65	9.61
Starting Current	Amps.	27	42	57	
Sound Level	dB (A)	54	50	52	
Compressor	Type	Rotary			
Refrigerant	Type	R-22			
Piping Connection	Liquid	Inch	1/4	1/4	3/8
	Suction	Inch	1/2	1/2	5/8
Dimension	Width	MM	710	900	900
	Height	MM	293	330	330
	Depth	MM	543	630	630
Weight (Net)	Kg	29	40	45	

Floor Ceiling



SPECIFICATIONS: AIR CONDITIONING



Model	Indoor	WIFXL-12SVW2	WIFXL-18SVW2	WIFXL-24SVW2	WIFXL-30SVW2	WIFXL-36SVW2	WIFXL-48SVW2	WIFXL-60SVW2	
Nominal Capacity	Cooling	Btu/h	12,000	18,000	24,000	30,000	36,000	48,000	60,000
Power Supply	V / Ph / Hz	220 - 240 / 1 / 50-60							
Motor	No.	1			2				
	HP	1/8	1/6	1/6	1/3	1/3	1/4 X 2	1/3 X 2	
	Speed	3							
Blower	Size	MM	150 X 200	150 X 200	150 X 240	150 X 200	150 X 200	150 X 200	150 X 240
	Qty.	NO.	2	2	2	3	3	4	4
Coil	Size (Inch)		10 X 27	10 X 27	10 X 27	10 X 38	10 X 38	10 X 50	10 X 60
	Fins Per Inch		15	15	18	15	18	15	15
	No.of Rows		2	2	3	3	3	3	3
	Tube Size (mm)		7.0						
	Tube Type		Inner Groove						
No.of Circuit		2	4	4	6	6	6	6	
Fin Type		Sine Wave							
Airflow - Nominal	CFM	350	500	700	800	1000	1400	1600	
Sound Level	dB (A)	36	48	52	53	55	58	59	
Refrigerant	Type	R - 22							
Piping Connection	Liquid	Inch	3 / 8			3 / 4			
	Suction	Inch	5 / 8			7 / 8			
Drain Connection	Inch	7 / 8							
Dimension	Length	MM	1010	1010	1010	1310	1310	1610	1910
	Depth	MM	240	240	240	240	240	240	240
	Height	MM	630	630	630	630	630	630	630
Weight (aprox.)	Net	Lbs.	65	71	88	93	95	138	163
	Shipping	Lbs.	68	75	97	99	102	145	170



- WIFXL-12SVW2 WIFXL-36SVW2
- WIFXL-18SVW2 WIFXL-48SVW2
- WIFXL-24SVW2 WIFXL-60SVW2
- WIFXL-30SVW2

Features

Standard



Optional



Cassette



R22 60HZ

- WICXL-18SVW2
- WICXL-24SVW2
- WICXL-36SVW2
- WICXL-48SVW2

Features

Standard



Optional



SPECIFICATIONS: AIR CONDITIONING

R22

Model Number	Indoor	WICXL-18SVW2	WICXL-24SVW2	WICXL-36SVW2	WICXL-48SVW2	
Nominal Capacity	Btu/h	18000	24000	36000	48000	
Power Supply	V / Ph / Hz	220 - 240 V / 1 Ph / 50-60 Hz				
Rated Load Current	Amps.	1.56	1.64	1.75	1.75	
Airflow	CFM	450	700	930	980	
Sound Level	dB (A)	42	45	45	51	
Refrigerant	Type	R-22				
Piping Connection	Liquid	Inch	1/4	3/8	3/8	3/8
	Suction	Inch	1/2	5/8	5/8	3/4
Dimension (W x H x D)	Unit	MM	580 x 290 x 580	840 x 230 x 840	840 x 305 x 840	840 x 305 x 840
	Panel	MM	680 x 30 x 680	953 x 60 x 953	953 x 60 x 953	953 x 60 x 953
Weight (Net)	Unit	Kgs	24	27	33	33
	Panel	Kgs	3	6	6	6

Fan Coil Unit 1



  60HZ

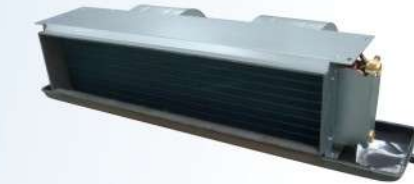
- | | |
|--------------|--------------|
| WIBXE-18SVS2 | WIDXE-24SVS2 |
| WIBXE-24SVS2 | WIDXE-30SVS2 |
| WIBXE-36SVS2 | WIDXE-36SVS2 |
| WIBXE-48SVS2 | WIDXE-48SVS2 |
| WIBXE-60SVS2 | WIDXE-60SVS2 |



FCU 1-Uncased

SPECIFICATIONS: AIR CONDITIONING



Model Number		Indoor	WIBXE-18SVS2	WIBXE-24SVS2	WIBXE-36SVS2	WIBXE-48SVS2	WIBXE-60SVS2
Nominal Capacity	Cooling	Btu/h	18000	24000	36000	48000	60000
Power Supply		V / Ph / Hz	220 - 240 Volts / 1 Ph / 50-60 Hz				
Rated Load Current		Amps.	0.70	0.99	1.76	2.60	4.10
External Static Pressure		Pa	50	50	50	70	70
Airflow @ rated Pa		CFM	620	830	1150	1550	2070
Sound Level		dB (A)	40	40	45	45	45
Refrigerant		Type	R-22 / R-410A				
Piping Connection	Liquid	Inch	3/8	3/8	3/8	3/8	3/8
	Suction	Inch	5/8	5/8	3/4	3/4	3/4
Drain Connection		Inch	3/4				
Dimension (W x H x D)	Height	MM	285	285	336	438	438
	Width	MM	1045	1130	1130	1232	1232
	Depth	MM	500	500	500	523	523
Weight	Net	Kg	18	21	28	39	42
	Shipping	Kg	19	23	30	42	46

OPTIONS:1. Heat Pump Model 2. Return Plenum with Filter 3. Chilled Water Coil

FCU 1-Cased

SPECIFICATIONS: AIR CONDITIONING



Model Number		Indoor	WIDXE-24SVS2	WIDXE-30SVS2	WIDXE-36SVS2	WIDXE-48SVS2	WIDXE-60SVS2
Nominal Capacity	Cooling	Btu/h	24000	30000	36000	48000	60000
Power Supply		V / Ph / Hz	220 - 240 Volts / 1 Ph / 50-60 Hz				
Fan Motor		HP	1/6	1/4	1/4	1/3	3/4
External Static Pressure		Pa	70	70	70	100	100
Airflow @ rated Pa		CFM	800	1000	1200	1600	2000
Refrigerant		Type	R-22 / R-410A				
Piping Connection	Liquid	Inch	3/8	3/8	3/8	3/8	3/8
	Suction	Inch	5/8	5/8	3/4	3/4	3/4
Drain Connection		Inch	3/4				
Dimension (W x H x D)	Height	MM	310	325	325	350	350
	Width	MM	900	966	966	1105	1400
	Depth	MM	567	620	620	620	620
Weight	Net	Kg	39	49	49	55	75
	Shipping	Kg	42	52	52	58	78

OPTIONS:1. Heat Pump Model 2. Chilled Water Coil

Fan Coil Unit 2



R22 60HZ

- WIBXL-09KNA1
- WCHXL-09KCR1 (DL)
- WIBXL-12KNA1
- WCHXL-12KCR1 (DL)
- WIBXL-18KNA1
- WCHXL-18KCR1 (DL)
- WIBXL-24KNA3
- WCHXL-24KCR3 (DL)
- WIDXL-18KNA1
- WCHXL-18KCR1 (DM)
- WIDXL-24KNA3
- WCHXL-24KCR3 (DM)
- WIDXL-36KNA3
- WCHXL-36KCR3 (DM)
- WIDXL-48KNA3
- WCHXL-48KCS3 (DM)
- WIDXL-60KNA3
- WCHXL-60KCS3 (DM)



FCU 2 - Low ESP

SPECIFICATIONS: AIR CONDITIONING

R22



Model		Indoor	WIBXL-09KNA1	WIBXL-12KNA1	WIBXL-18KNA1	WIBXL-24KNA3
		Outdoor	WCHXL-09KCR1(DL)	WCHXL-12KCR1(DL)	WCHXL-18KCR1(DL)	WCHXL-24KCR3(DL)
Nominal Capacity	Cooling	Btu/h	9000	12000	18000	24000
Power Supply	V / Ph / Hz		208 - 230 / 1 / 60			
Rated Load Current	Amps.		4.44	5.94	8.70	13.04
External Static Pressure	Pa		30	30	30	30
Airflow	CFM		250	320	500	750
Sound Level	dB (A)		30/34/38	31/35/40	32/37/42	31/36/42
Compressor	Type		Rotary			
Refrigerant	Type		R - 22			
Piping Connection	Liquid	Inch	1/4	1/4	1/4	3/8
	Suction	Inch	3/8	1/2	1/2	5/8
Dimension (W x H x D)	Indoor	MM	815x240x490	815x240x490	1000x240x490	1130x240x490
	Outdoor	MM	665x505x295	840x510x310	860x690x370	900x690x370
Weight (Net)	Indoor	Kg	13.5	14.5	17.5	18.5
	Outdoor	Kg	26	37	50	60

FCU 2 - Med ESP

SPECIFICATIONS: HEAT PUMP

R22



Model		Indoor	WIDXL-18KNA1	WIDXL-24KNA3	WIDXL-36KNA3	WIDXL-48KNA3	WIDXL-60KNA3
		Outdoor	WCHXL-18KCR1 (DM)	WCHXL-24KCR3 (DM)	WCHXL-36KCR3 (DM)	WCHXL-48KCS3 (DM)	WCHXL-60KCS3 (DM)
Nominal Capacity	Cooling	Btu/h	18000	24000	36000	48000	60000
Power Supply	V / Ph / Hz		208 - 230 / 1 / 60				
Rated Load Current	Amps.		9.66	13.04	18.4	24.6	28.5
External Static Pressure	Pa		50	70	70	13	130
Airflow	CFM		500	800	1000	1350	1600
Sound Level	dB (A)		31 - 42	31 - 42	33 - 45	42 - 50	42 - 50
Compressor	Type		Rotary				Scroll
Refrigerant	Type		R - 22				
Piping Connection	Liquid	Inch	1/4	3/8	3/8	3/8	3/8
	Suction	Inch	1/2	5/8	3/4	3/4	3/4
Dimension (W x H x D)	Indoor	MM	850x250x745	1055x295x755	1055x295x755	1385x312x830	1385x312x830
	Outdoor	MM	860x890x370	940x800x420	940x800x420	973x1260x410	973x1260x410
Weight (Net)	Indoor	Kg	31	42	44	60	60
	Outdoor	Kg	53	69	72	107	124

Universal Outdoor



SPECIFICATIONS: AIR CONDITIONING

R22

Model		WCUXL-18KNR2	WCUXL-24KNR2	WCUXL-36KNR2	WCUXL-48KNS2	WCUXL-60KNS2
Nominal Cooling Capacity	Btu/h	18000	24000	36000	48000	60000
Power Supply	V / Ph / Hz	220-240 V / 1-Ph / 60 Hz				
Rated Current	Amps.	8.6	11.0	18.4	24.6	28.5
Compressor	Type	Rotary			Scroll	
Refrigerant	Type	R - 22				
Noise Level	dB (A)	55	58	58	62	64
Piping Connection	Liquid (φ) Inch	3/8	3/8	3/8	3/8	3/8
	Suction (φ) Inch	5/8	5/8	3/4	3/4	3/4
Maximum Ref. Pipe Length	Meter	20	25	40	40	40
Maximum Ref. Pipe Elevation	Meter	10	10	12	15	15
Dimension	Width MM	770	940	940	973	1000
	Height MM	520	800	800	1260	1460
	Depth MM	280	420	420	410	420
Weight	Kgs	39	69	72	107	124

Features: 1. 24 Volts Control Voltage 2. High Efficiency Rotary and Scroll Compressors 3. Compatible with Different Type of Indoor Unit

R22

60HZ

- WCUXL-18KNR2
- WCUXL-24KNR2
- WCUXL-36KNR2
- WCUXL-48KNS2
- WCUXL-60KNS2

Features

Standard



Optional

