

Smarter technology for all

Instore screen Displays

Lenovo

Partnership Portfolio
OEM Solutions

Instorescreen Core Principles



Unmatched reliability & durability

HIGH QUALITY, DURABLE, COMMERCIAL
GRADE SOLUTIONS MADE IN-HOUSE
FROM QUALITY COMPONENTS



Purposeful design

PURPOSE-BUILT DIGITAL SIGNAGE AND
TOUCH SCREENS DESIGNED FOR THE
BEST USER EXPERIENCE.



Lenovo preferred partners

TRUSTED AND TESTED TO MEET
LENOVO'S HIGH STANDARDS FOR
SOLUTION PARTNERSHIP



Long lifecycle

3-5 YEAR LIFECYCLE AND PRODUCT
TRANSITION MANAGEMENT FOR
PREDICTIVE LIFECYCLE STABILITY



Customer Pain Points

Instore screen products address a variety of issues that retail customers have with other screen options and providers.

01



CHEAPER RETAIL SOLUTIONS END UP COSTING TOO MUCH LONG-TERM

04



OTHER SOLUTIONS TAKE TOO LONG TO ROI

02



SUPPLY CHAIN AVAILABILITY

05



POOR RELIABILITY & INCONSISTENT SCREEN QUALITY

03



TOUCH POINT CLEANLINESS

06

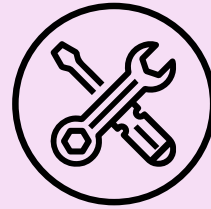


LACK OF INDUSTRY EXPERTISE & ABILITY TO ADDRESS COMPLEX SOLUTION NEEDS



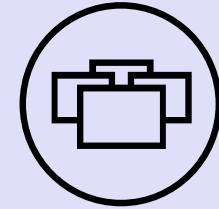
Touch Screens

Touch enabled displays for Kiosk, POS, wayfinding and Interactive signage.



Custom

Custom displays and All-in-one solutions for unique project-based requirements.



Digital Signage

Smart Retail 2.0 digital signage enhances customer experiences in Retail, Workspaces and Hospitality.

InTouch Displays





InTouch

OEM Touch Displays | Purpose Built Digital Signage

- **Available Sizes**

- 10.1", 15.6" and 21.5"
- 23.8" and 27"

- **Long Life Commercial Grade Components**

- Industrial design with premium styling
- Sleek All-Aluminum Chassis
- Latest LCD Technology
- Corning® Antimicrobial Gorilla® Glass.
- USB-C (Power, Data, Visual)

- **Option**

- All-in-One Compute Mounts
- POS and Tabletop Stands Available

10.1"

15.6"

24"

24"

21.5"

27"



InTouch

OEM Touch Displays | Purpose Built Digital Signage



32"



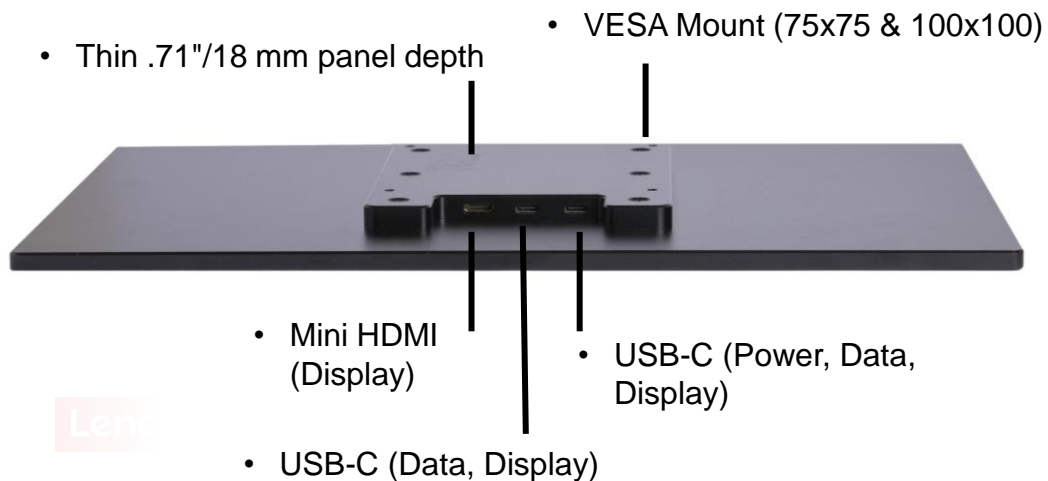
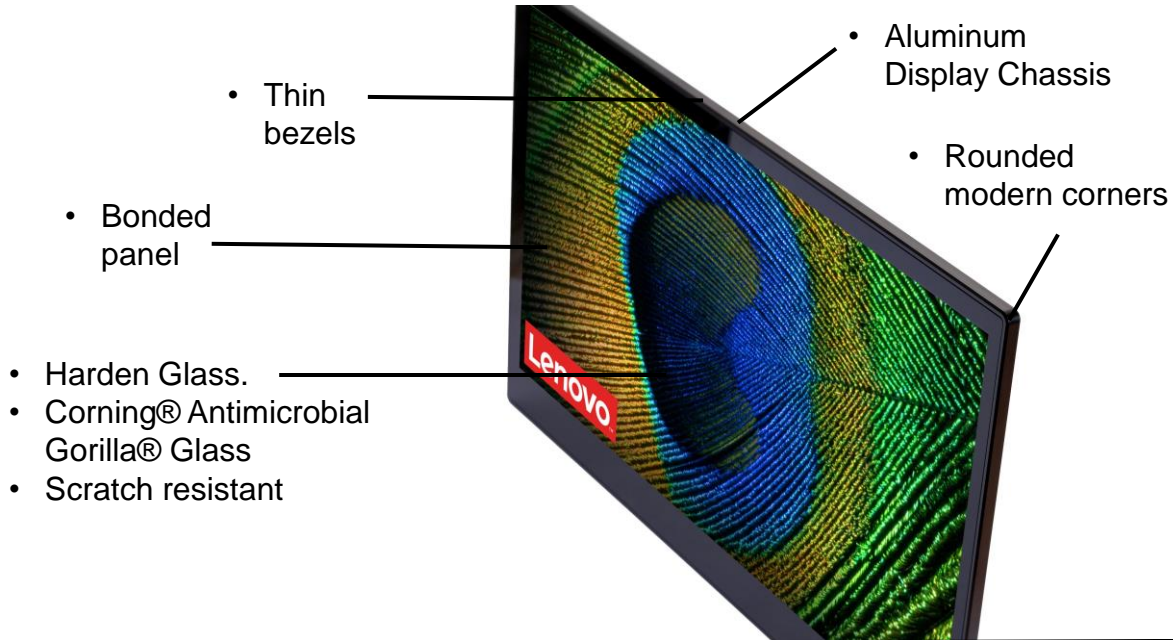
43"



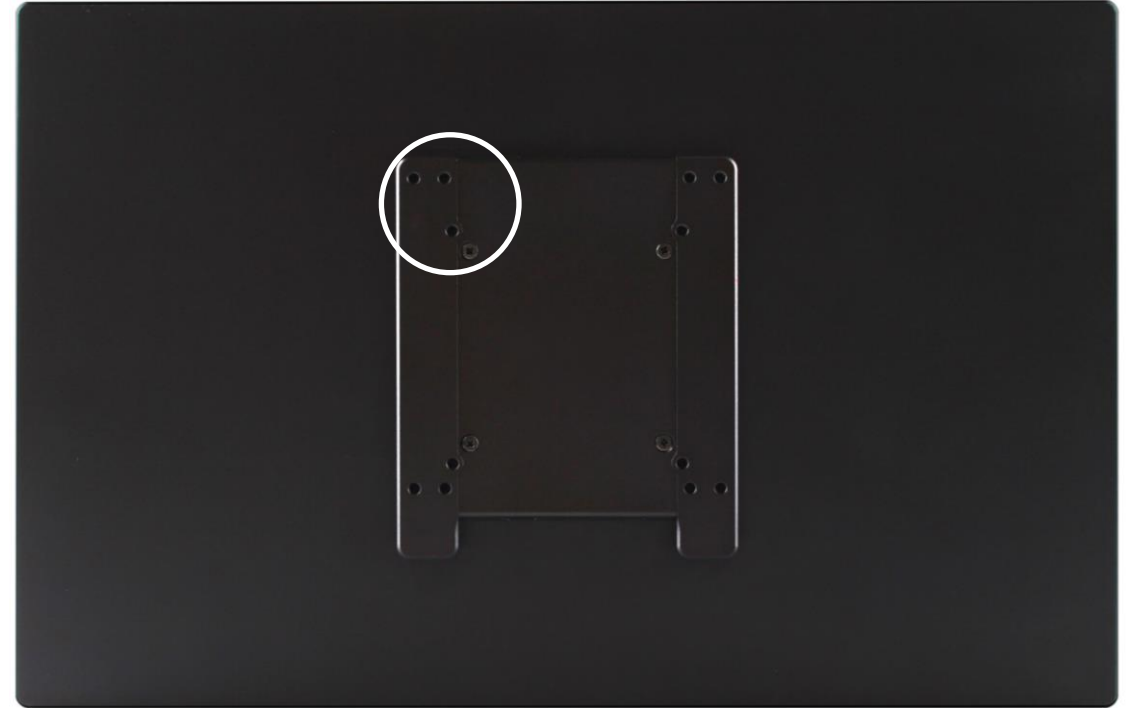
55"

- **Available Sizes**
 - 32", 43" and 55"
- **Diverse ISV Platforms**
 - Embedded Android 11 OS
 - HDMI IN for PC Driven Solution
- **Long Life Commercial Grade Components**
 - Industrial design with premium styling
 - Sleek All-Aluminum Chassis
 - Latest LCD Technology
 - Corning® Gorilla® Glass.
 - USB-C 3.2 gen2 (Touch, Video)
- **Option**
 - Kiosk and Wayfinding stand available

Instorescreen InTOUCH | Product design features



VESA Mount
75x75mm & 100x100mm



VESA Standard: FDMI MIS-D

InFLEX Displays: Designed with...



InFLEX Display

InFlex Displays are the latest product series from Instorescreen.

- **Available Sizes**
 - 15.6" or 21.5" size
- **Multi-functional | Purpose Built Design**
 - Conceals Lenovo Chromebox Micro
 - Flex ports for peripherals
- **Long Life Commercial Grade Components**
 - Full HD LCD IPS Panel
 - Hardened, easy to clean protective glass
 - Durable and sturdy enclosure
 - Commercial grade (24/7 usage)
- **Connectivity**
 - Lenovo Chromebox Micro
 - PC (HDMI, DP, USB-C, USB-A ports)

Instorescreen Core Principles



Reliability & durability
High quality, durable, commercial grade solutions made in-house from quality components.



Purposeful design
Purpose-built digital signage and touch screens designed for the best user experience.



Lenovo preferred partners
Trusted and tested to meet Lenovo's high standards for solution partnership



Long lifecycle
3-5 Year lifecycle and product transition management for predictive lifecycle stability.

Lenovo Chromebox Micro in mind!



Lenovo Chromebox Micro sold separately

The Perfect Fit

At 6.42 x 3.11 x 0.78 Inches the Lenovo Chromebox Micro can fit comfortably secured at the rear of the 15.6 or 21.5 Inch inflex Display ensuring unhindered access to all ports, while offering a streamlined and integrated appearance.



Flexible Peripheral Ports

In time, the InFLEX series will offer a range of add-on devices including fingerprint reader, 3-in-1 card reader, camera and more... Each will attach via micro-USB ports located discreetly on either of the four sides making these displays even more versatile!





InTOUCH Point of Sale, Stands and Kiosk Lineup

- All-Aluminum Framing
- Built for Lenovo Computing
- Modern designs

Tiny_POS

- Single or Dual Sided POS
- 10.1" Customer Facing
- 15.6" or 21.5" Employee Facing
- VESA Mounting
- Lenovo Tiny Series Compartment



InPOS101 InPOS215

- Simplified tabletop stands
- Supports 10.1" – 27" Displays
- VESA Mounting



InPOS Compute

- Single Sided Stand
- 10.1" or 15.6" Displays
- VESA Mount
- Lenovo Tiny or Nano Series





Leading
Together with
Digital
Transformation
Solutions

Lenovo OEM Solutions Compute Portfolio: Digital Signage

ThinkEdge



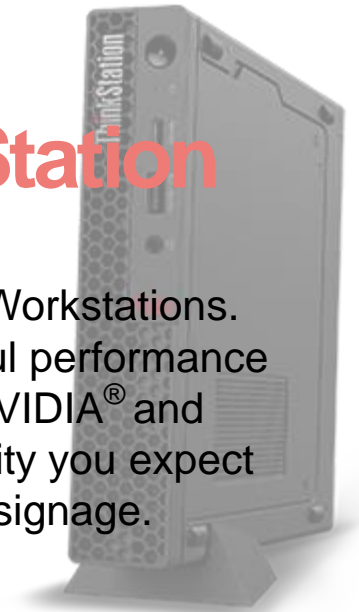
Introduce new technologies
without increasing network
latency.

ThinkCentre



M Tiny Series Desktop. Full-
featured compact desktop
delivering performance,
durability, efficiency and
security expected in your POS,
Kiosk, signage solution.

ThinkStation



P Tiny Series Workstations.
Delivers powerful performance
backed by NVIDIA® and
superior reliability you expect
for digital signage.

Lenovo OEM Benefits



Full OEM Portfolio of Offerings

- Commercial product offerings including PCs, Smart Edge Gateways, Tablets, Servers, Storage, Networking & 3rd Party offerings.
- Extended Life Program: providing 3-5 years, lifecycle across multiple platforms.
- Global warranty and premier services.



Global OEM Specialization

- Dedicated OEM sales specialists with global and regional coverage.
- Dedicated engineering resources focused on innovation for your solution development needs.
- Vertical positioning and industry expertise.



OEM Capabilities

- E2E program management for your solution.
- Multi-level customization services, including blank chassis, bezels, packaging, logos, documentation, WW Label, imaging and global deployment services.
- Strategic technology partnerships, including Intel IOTG Solution Alliance, RFP Ready Kits and Market Ready Solutions.



Smart Retail

by INSTORESCREEN™

Purpose-built Digital Signage

Lenovo

2023 Lenovo Confidential. All rights reserved.



Latest LCD Technology
Long Life Commercial Grade
Glass Front
Aluminum Chassis
Daisy Chain Technology

“When you change the way you look at things, the things you look at change”.

~Dr. Wayne Dyer

Industry Signage Verticals



Retail

Grocery, Consumer outlet,
Convenience, Department,
Drug Stores



Workspace

Lobby, Commercial,
Conference, Banking



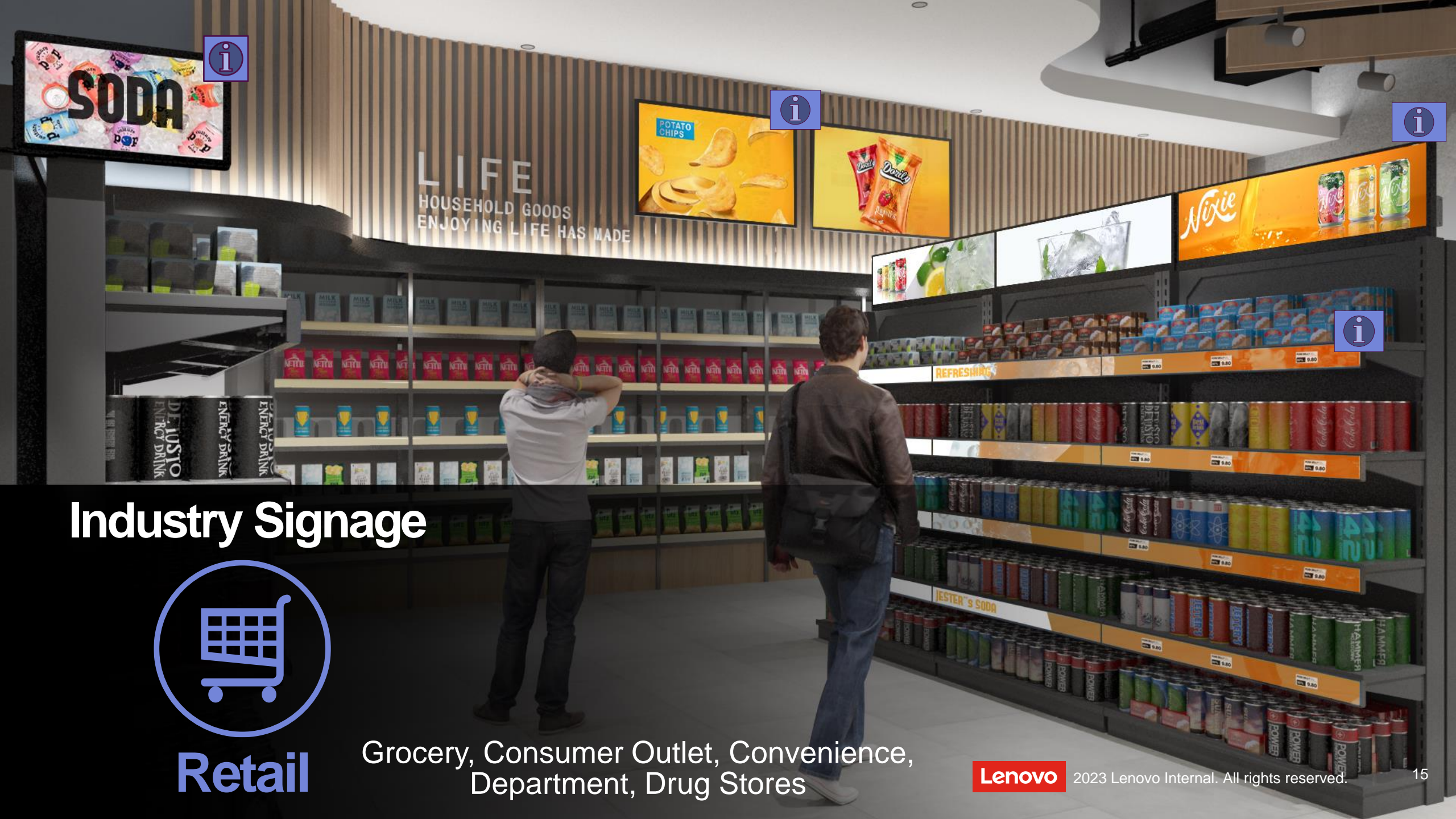
Hospitality

Hotel, Dinning,
Entertainment, Tourism



Manufacturing

Warehouse,
Manufacturing



Industry Signage



Retail

Grocery, Consumer Outlet, Convenience,
Department, Drug Stores

Lenovo

2023 Lenovo Internal. All rights reserved.



Industry Signage

Office Building



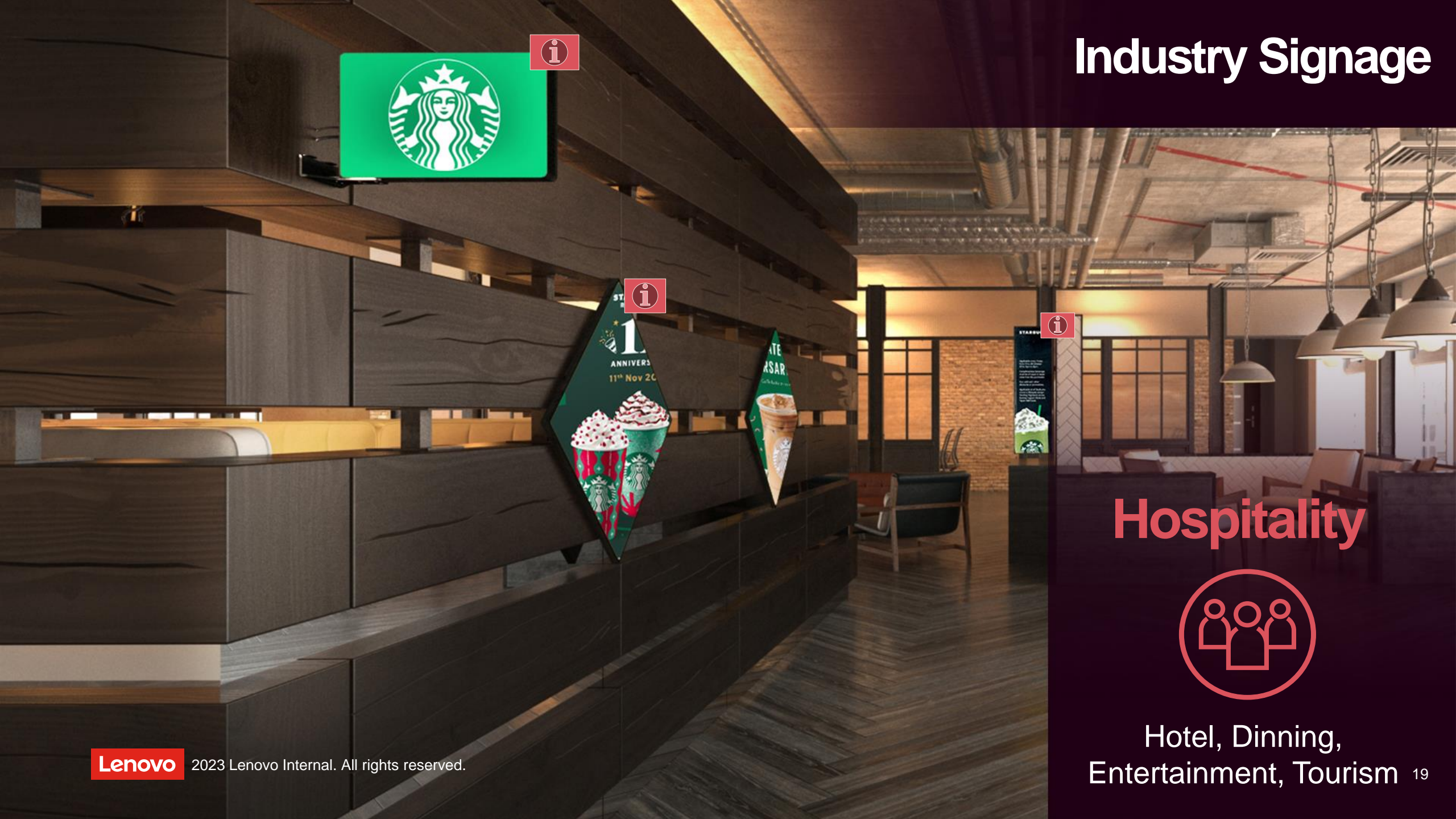
Lobby, Commercial,
Conference, Banking



Office Setting



Industry Signage



Hospitality

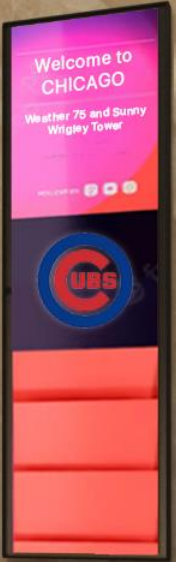


Hotel, Dining,
Entertainment, Tourism 19

Hotel Check-in



Elevator Advertising



Hotel Guest Suite



Industry Signage



Manufacturing





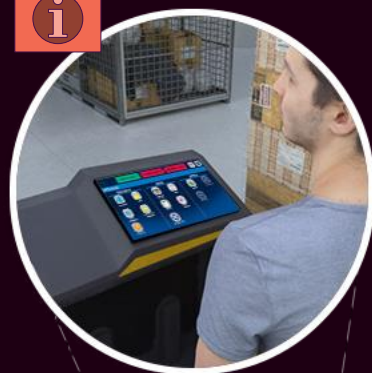
A



Flush mounted displays for messaging



Touchscreen displays and stands



Integrated touchscreens



Shelving category flags



Double sided navigation signage



Elevator signage
Employee messaging



Smarter
technology
for all

Lenovo

thanks.

Why Instorescreen's Digital Displays?

Meaningful Design, Customer ROI and Longevity are top priority.

- Daisy Chain content across multiple screens
- One compute delivers content to upwards of 100+ displays
- Reduction in hidden cost:
 - WIFI touchpoints are reduced by the number of computes delivering content.*
 - Lower software complexity and license fee.**
- Top-Grade LCDs components:
 - Consistent brightness and colors
 - Longest life LCDs available
- Aluminum chassis and hardened glass for longevity and effortless cleaning***.
- Scalable business model with noticeable ROI

Bringing Durability, Quality, and Style to consumers across multiple industries



InPOS Compute

OEM Touch Displays | Purpose Built Digital Signage

Instorescreen InTOUCH Point of Sale



- Single Sided POS
 - 10.1” or 15.6” Employee Facing
- VESA Mounting
- Lenovo Tiny or Nano Compartment
 - ThinkCentre M70q or M90q
 - ThinkCentre M90n-1 Nano IoT

Solution BOM

- InTOUCH101B - 4ZF1A40503
- InTOUCH156B - 4ZF1B20559
- InPOS Compute - 40C1SS1002
- Single Cable Solution
 - Lenovo USB-C Cable - 4X90U90619
- 2-Cable solution
 - InTOUCH Cable Kit –A - 40EQCC1001



Tiny_POS

OEM Touch Displays | Purpose Built Digital Signage

Instorescreen InTOUCH Point of Sale



- Single or Dual Sided POS
 - 10.1" Customer Facing
 - 15.6" or 21.5" Employee Facing
- VESA Mounting
- Lenovo Tiny Series Compartment
- Optional I/O Box
 - Connect up-to 8 external devices

Solution BOM

- InTOUCH101B - 4ZF1A40503
- InTOUCH156B - 4ZF1B20559
- InTOUCH215B - 4ZF1C05251
- Tiny_POS - 40ENSD1015
- External I/O Box- 4ZW1L84160
 - Power Supply - 4ZW1L84158
 - Power Cable – NA (4ZW1L84159), EU (4ZW1M22157), UK (4ZW1M22158)



InPOS101S & InPOS215S

OEM Touch Displays | Purpose Built Digital Signage

Instorescreen InTOUCH Stand

- Tabletop VESA Mount Stand
 - 10.1”, 15.6” OR
 - 21.5”, 24”, 27”
- Optional VESA Mounted PC Shell



Solution BOM

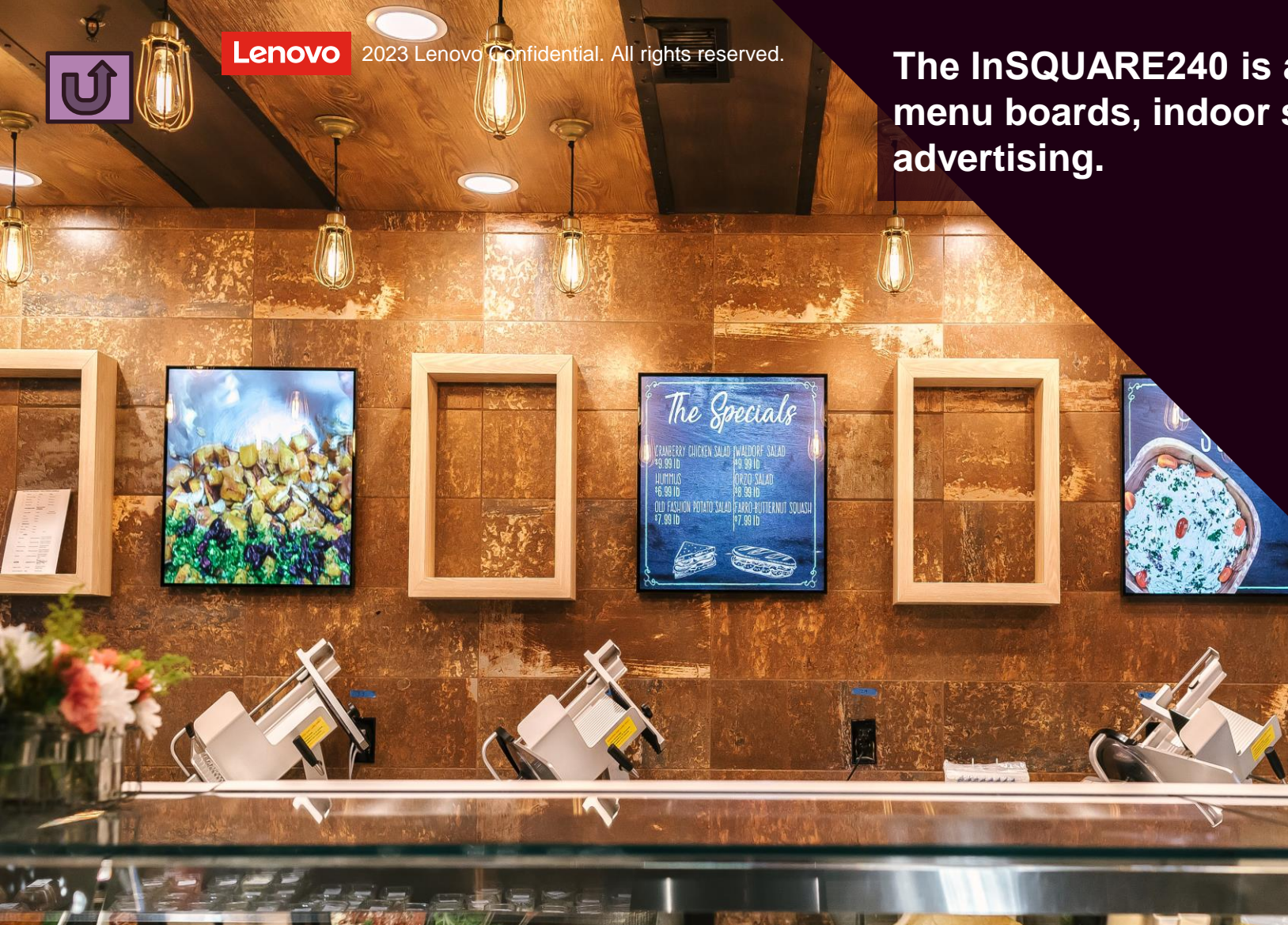
- InPOS101S - 4ZE1D33864
 - InTOUCH101B - 4ZF1A40503
 - InTOUCH156B - 4ZF1B20559
 - InTOUCH Cable Kit –A - 40EQCC1001
- InPOS215S - 40ENSD1014
 - InTOUCH215B - 4ZF1C05251
 - InTOUCH240B - 4ZE1D97335
 - InTOUCH270B - 40EMTD1006
 - InTOUCH Cable Kit – B - 40EQCC1011



Lenovo

2023 Lenovo Confidential. All rights reserved.

The InSQUARE240 is a 24'x24' quadratic monitor used for menu boards, indoor signage, digital art display & advertising.



- VESA Mountable or Flush Mount
- 500 Nits Brightness
- Long Life Commercial Grade Components
- Sturdy Aluminum Chassis with
- Hardened Glass
- 3-yr Global Warranty

InSQUARE - 4ZF1D32961

InSQUARE240

OEM Displays | Purpose Built Digital Signage



The InCAP series are stretch displays use on retail gondolas, freezer headers or wall mounted for informational content & advertising in portrait or landscape orientation.

- Standard sizes avail. 24", 36" and 48"
- Latest LCD Technology
- Long Life Commercial Grade Components
- Sturdy Aluminum Chassis with Hardened Glass
- Daisy Chain Technology
- Chassis color in Black or White
- Cameras for Analytics (Optional)
- 3-yr Global Warranty

InCAP240 - 40EMTD1022

InCAP360 - 4ZF0W90173

InCAP480 - 4ZF0W90176

InCAP - Stretch Displays

OEM Displays | Purpose Built Digital Signage





The InSHELF series are narrow stretch displays use on retail gondolas, informational content & advertising in portrait or landscape orientation.



- Standard sizes avail. 24", 36" and 48"
- Latest LCD Technology
- Long Life Commercial Grade Components
- Sturdy Aluminum Chassis with Hardened Glass
- Daisy Chain Technology
- Chassis color in Black or White
- 3-yr Global Warranty

InSHELF240 - 4ZF0W90165
InSHELF360 - 4ZF0W90168
InSHELF480 - 4ZF0X19175

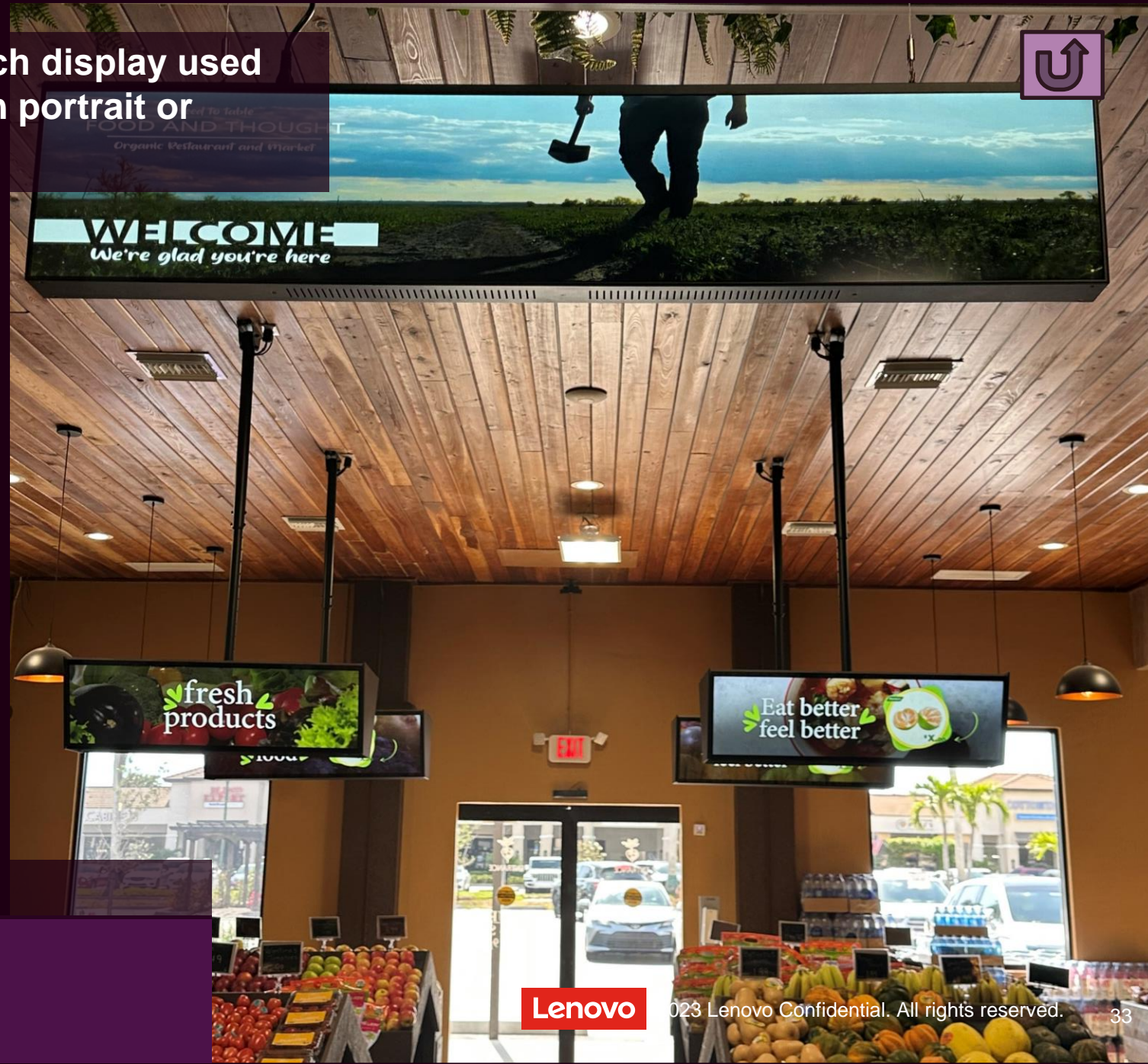
InSHELF - Stretch Displays

OEM Displays | Purpose Built Digital Signage



The InCAP480-D is a dual-sided 48' stretch display used for informational content & advertising in portrait or landscape orientation.

- Standard size 48" dual sided display
- Latest LCD Technology
- Long Life Commercial Grade Components
- Sturdy Aluminum Chassis with Hardened Glass
- Daisy Chain Technology
- 3-yr Global Warranty



InCAP480B-D - 40EMTD1023

InCAP480B-D

OEM Displays | Purpose Built Digital Signage

Lenovo

© 2023 Lenovo Confidential. All rights reserved.



The InVIEW156A is a dual sided 15.6" non-touch displays for digital banners or category flags. Built-in Android OS

- Standard size 15.6" dual sided display
- Latest LCD Technology
- Long Life Commercial Grade Components
- Sturdy Aluminum Chassis with Hardened Glass
- Black Bezel, Lozier attachment bracket included.
- Built-in Android OS
- 3-yr Global Warranty



InSQUARE240
Lenovo part #4ZF1D32961

InVIEW156A - 40EMTD1015

InVIEW156A

OEM Displays | Purpose Built Digital Signage



2023 Lenovo Confidential. All rights reserved.

The InBAN series are double-sided stretch displays used as gondola toppers and aisle banners for informational content & advertising while in portrait or landscape orientation.

- Standard size avail. 19”
- Latest LCD Technology
- Long Life Commercial Grade Components
- Sturdy Aluminum Chassis with Hardened Glass
- Built-in Android OS
- Chassis color in Black
- 3-yr Global Warranty

InBAN190 - 4ZF0W90170

InBAN190 – 2-sided Banners

OEM Displays | Purpose Built Digital Signage



Lenovo

2023 Lenovo Confidential. All rights reserved.