



© 2019 Lennox Industries Inc.  
Dallas, Texas, USA

507992-01  
09/2019

## REPLACEMENT CONTROL KIT

### INSTALLATION INSTRUCTIONS FOR REPLACEMENT UTEC BLOWER CONTROL KIT

#### WARNING

This kit is to be installed by a licensed professional technician (or equivalent) or other agency in accordance with the manufacturer's instructions, and in accordance with all codes and requirements of the authority having jurisdiction.

#### Shipping & Packing List

Package 1 of 1 contains:

- 1- UTEC control board
- 1- 6 pin wire harness (with a 3/16 quick connect blue wire)
- 1- wire nut
- 6- #8 screws

#### Application

This kit (48K98) is for use on G20, G20R, G23 and G26 series units. The UTEC functions and troubleshoots the same as the other BCC control.

#### Installation

#### WARNING


Protect the control from direct contact with water. If the control has been in direct contact with water, replace the control.

WHEN SERVICING CONTROLS, label all wires prior to disconnecting. Wiring errors can cause improper and dangerous operation.

VERIFY proper operation after servicing.

#### ELECTROSTATIC DISCHARGE (ESD) Precautions and Procedures

#### CAUTION

 Electrostatic discharge can affect electronic components. Take precautions to neutralize electrostatic charge by touching your hand and tools to metal prior to handling the control.

- 1- Turn off electrical power.
- 2- Remove access panel.
- 3- Remove control box cover. (G20R units not equipped with control box cover.)

- 4- Disconnect and mark wires one at a time from the existing BCC control.
- 5- Remove BCC blower control. Use a 1/8" drill bit and the provided #8 screws to install replacement UTEC board. Make note the UTEC screw holes will not line up with the current BCC screw holes.
- 6- Install the provided 6 pin wire harness to the UTEC control. Reconnect marked wires using table 1 and figure 1 for the BCC wiring to UTEC equivalent and follow the steps below.

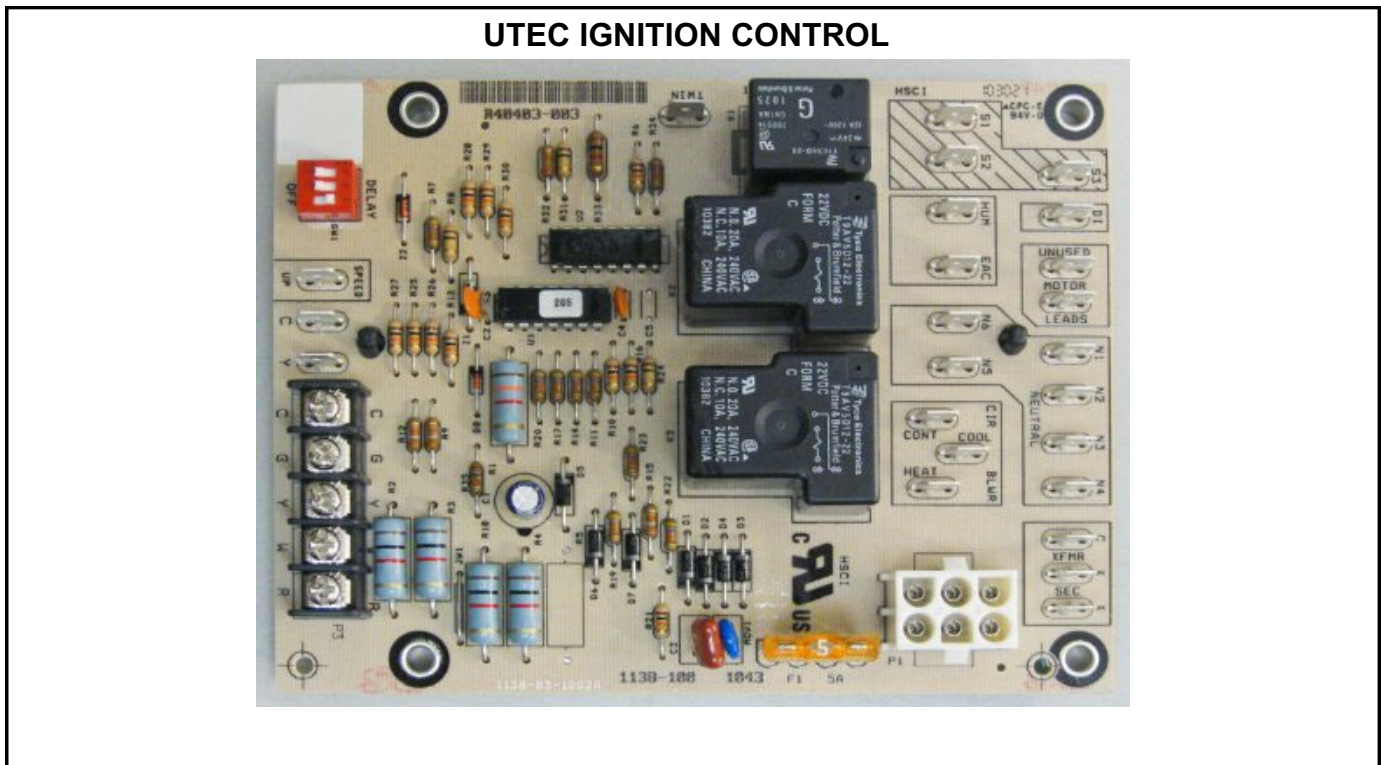
**NOTE** - Transfer wires from the one control to another one at a time.

- 1- **Tape off** the "valve sense" orange wire from the BCC terminal. It will not be used.
- 2- If the "24V" terminal on the BCC control has a 3/16" quick connect terminal, use the provided blue wire to connect to the existing wire and the other end to the UTEC control "X". If the "24V" BCC terminal is 1/4" then use the existing wire and the provided blue wire will not be used.
- 3- Connect the "ACC" brown wire to the "EAC" terminal on the UTEC. **Note** - The ACC terminal may not be used on all BCC controls.
- 4- Connect the "CF" wire to the "CONT" terminal on the UTEC. **Note** - The CF terminal may not be used on all BCC controls.
- 5- Connect the black "XFMR" to the "S1" terminal on the UTEC.
- 6- Connect the black wire "A" to the "COOL" terminal on the UTEC.
- 7- Connect the red wire "H" to the "HEAT" terminal on the UTEC.
- 8- Connect black wire "L1" to "S2" terminal on the UTEC.
- 9- Connect the black wire "CAB" to the "DI" terminal on the UTEC.
- 10- Take the black wire "WI" or "W" and tie into the jumper between pins 5 and 3 on the plug on the UTEC. Cut all three wires then strip to appropriate length and wire nut together.
- 11- Connect the white wire "NEUTRAL" to the "NEUTRAL" terminal on the UTEC.
- 12- Connect the white wire "NEUTRAL" to the "NEUTRAL" terminal on the UTEC.
- 13- Connect the white wire "NEUTRAL" to the "NEUTRAL" terminal on the UTEC.

- 14- Connect the white wire "NEUTRAL" to the "NEUTRAL" terminal on the UTEC..
- 15- Connect the blue wire "LIMIT" to the purple wire with the ¼" quick connect from pin 6 on the plug on the UTEC.
- 16- Connect the yellow wire "C" to the "COM" on the UTEC.
- 17- Connect the conjoined yellow and green wires "C" to the "C" terminal on the UTEC.
- 18- Connect the yellow wire "T" to the "C" terminal on the UTEC. ground to ground on the UTEC. **Note** - The T terminal may not be used on all BCC controls
- 19- Replace access panel.
- 20- Restore electrical power and refer to unit installation instructions for start-up and check-out procedures.

**TABLE 1**

Existing Control	Replacement Control
BCC Control	UTEK Control
24V	X
Limit	Pin 6
N/A	Jumper Pin 3 to Pin 5
L1	S2
Valve Sense	N/A
Neutral	Neutral
Neutral	Neutral
Neutral	Neutral
Neutral	Neutral
A	COOL
H	HEAT
CF	CONT
CAB	DI
ACC	EAC
XFMR	S1
C	C
C	C
WI or W	Ties to jumper pin 3 and 5
T (-01 and -02 only)	C



**FIGURE 1**

# BCC IGNITION CONTROL

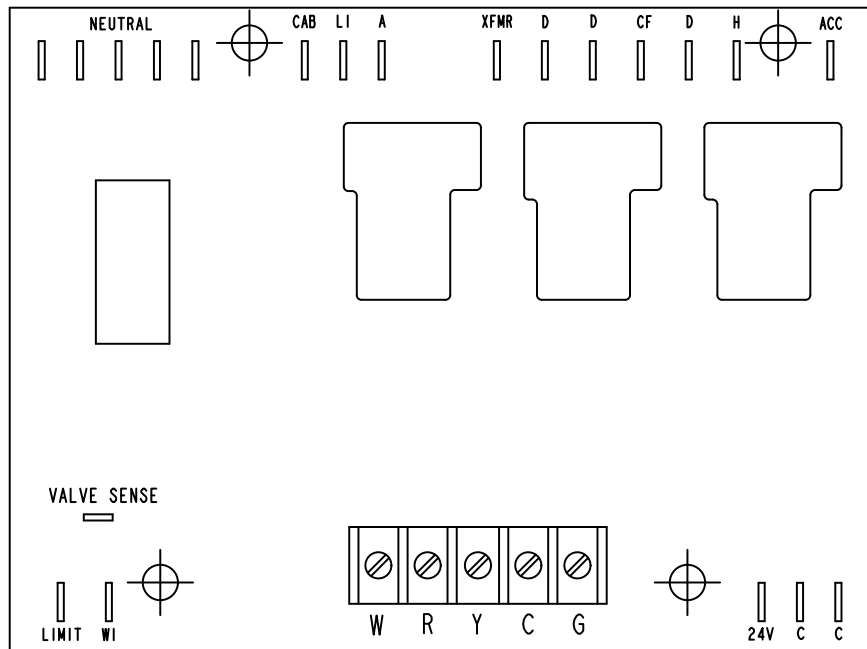


FIGURE 2