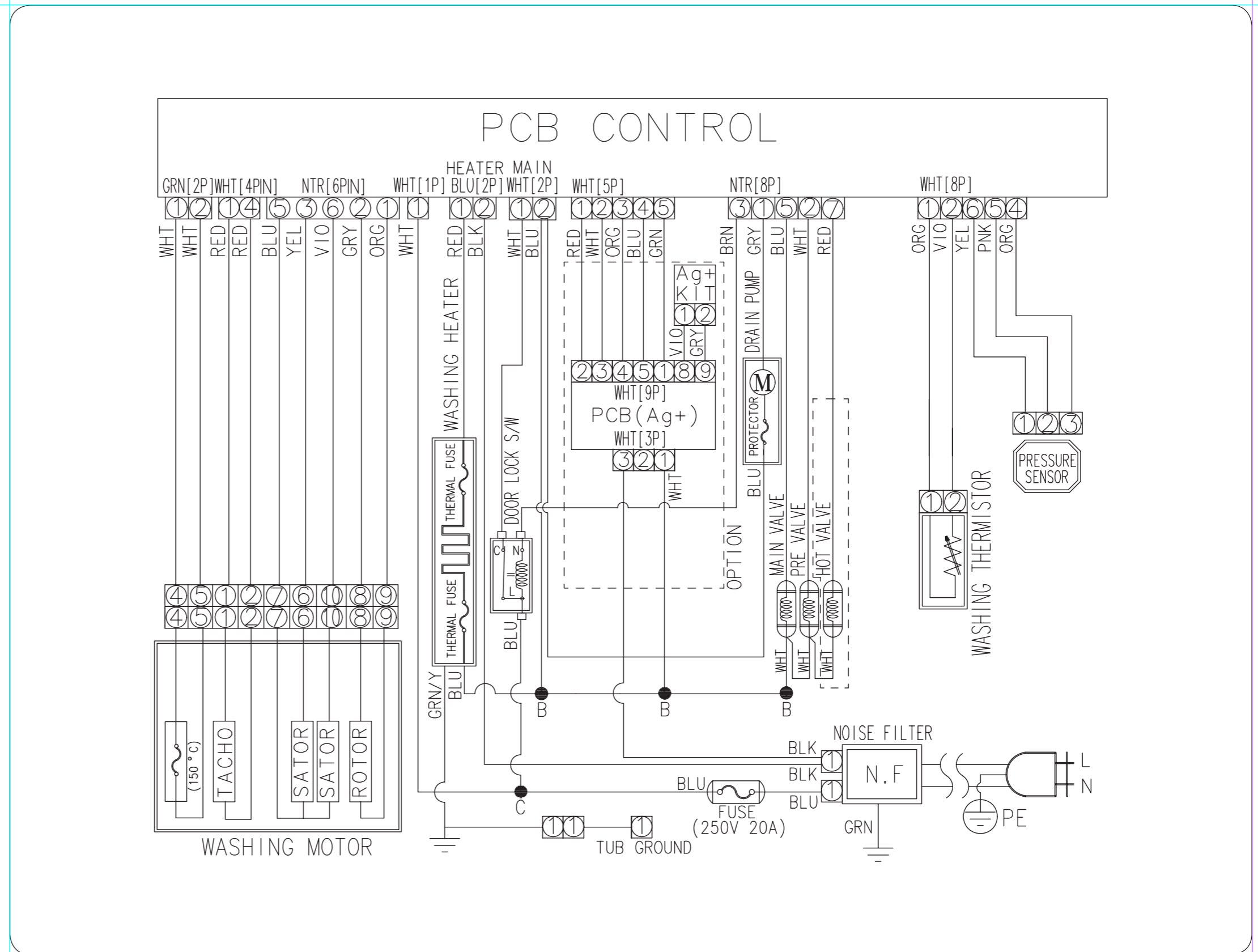


## 7. WIRING DIAGRAM

### 7-1. WIRING DIAGRAM

#### ■ REFERENCE INFORMATION

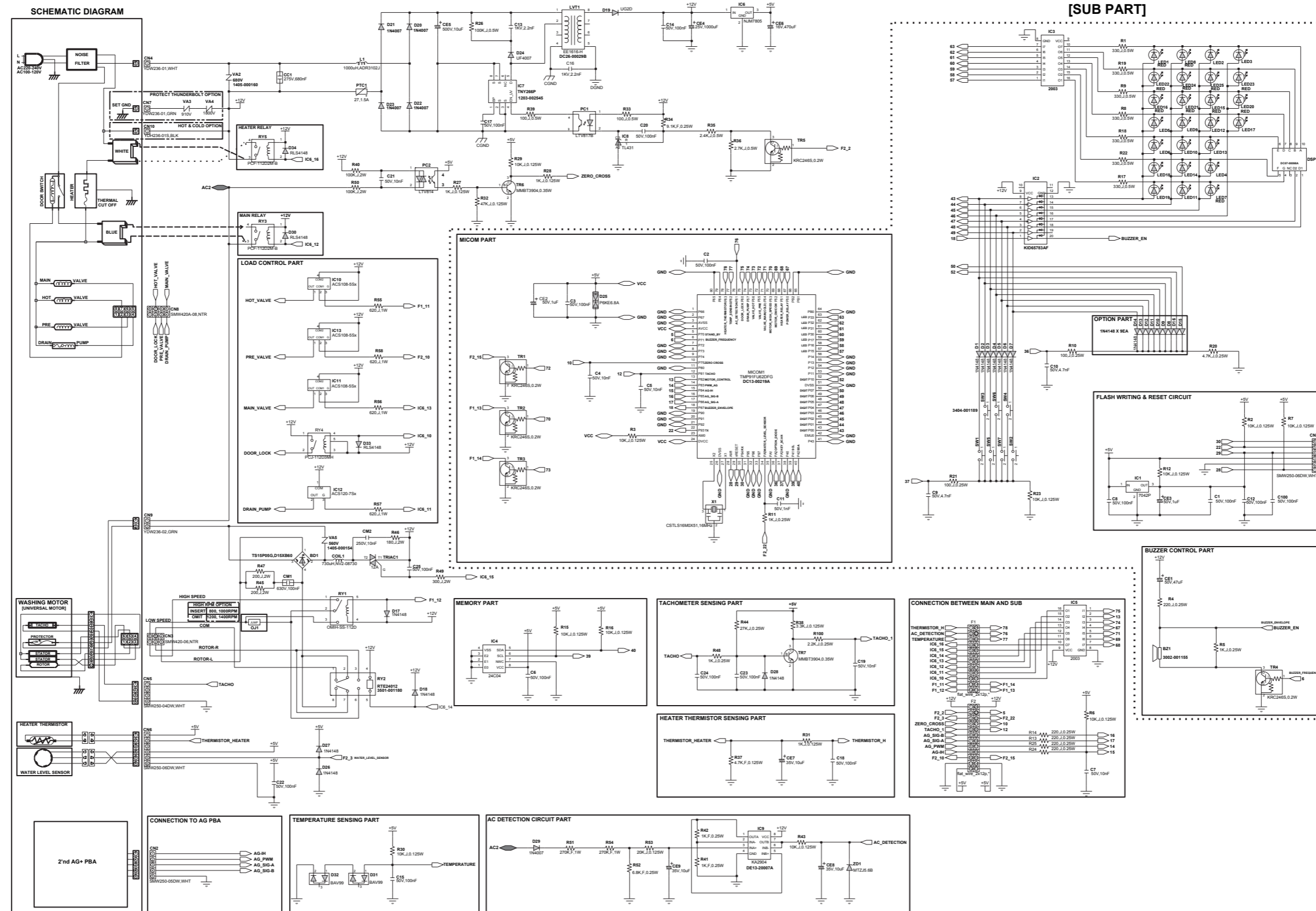
BLK	BLACK
BLU	BLUE
GRN	GREEN
GRY	GRAY
NTR	NATURAL
ORG	ORANGE
PNK	PINK
RED	RED
SKYBLU	SKYBLUE
VIO	VIOLET
WHT	WHITE
YEL	YELLOW



# 8. SCHEMATIC DIAGRAM

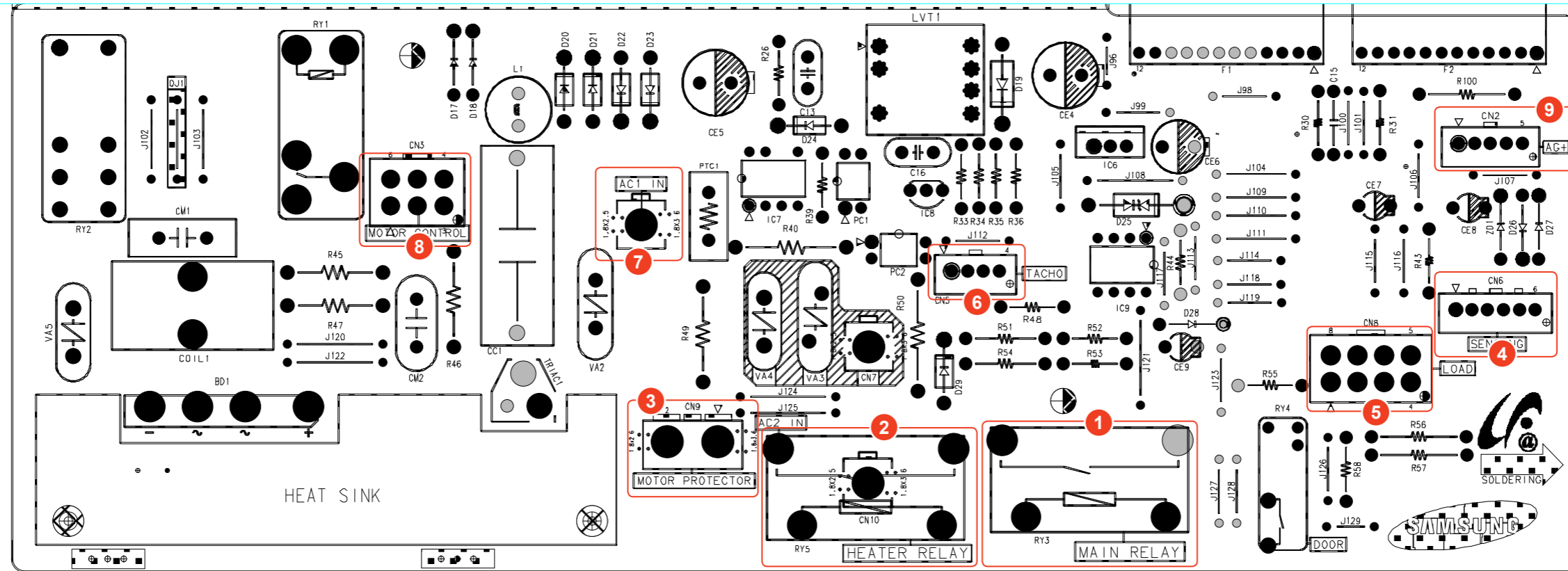
## 8-1. MAIN/SUB CONTROL

▶ This Document can not be used without Samsung's authorization.



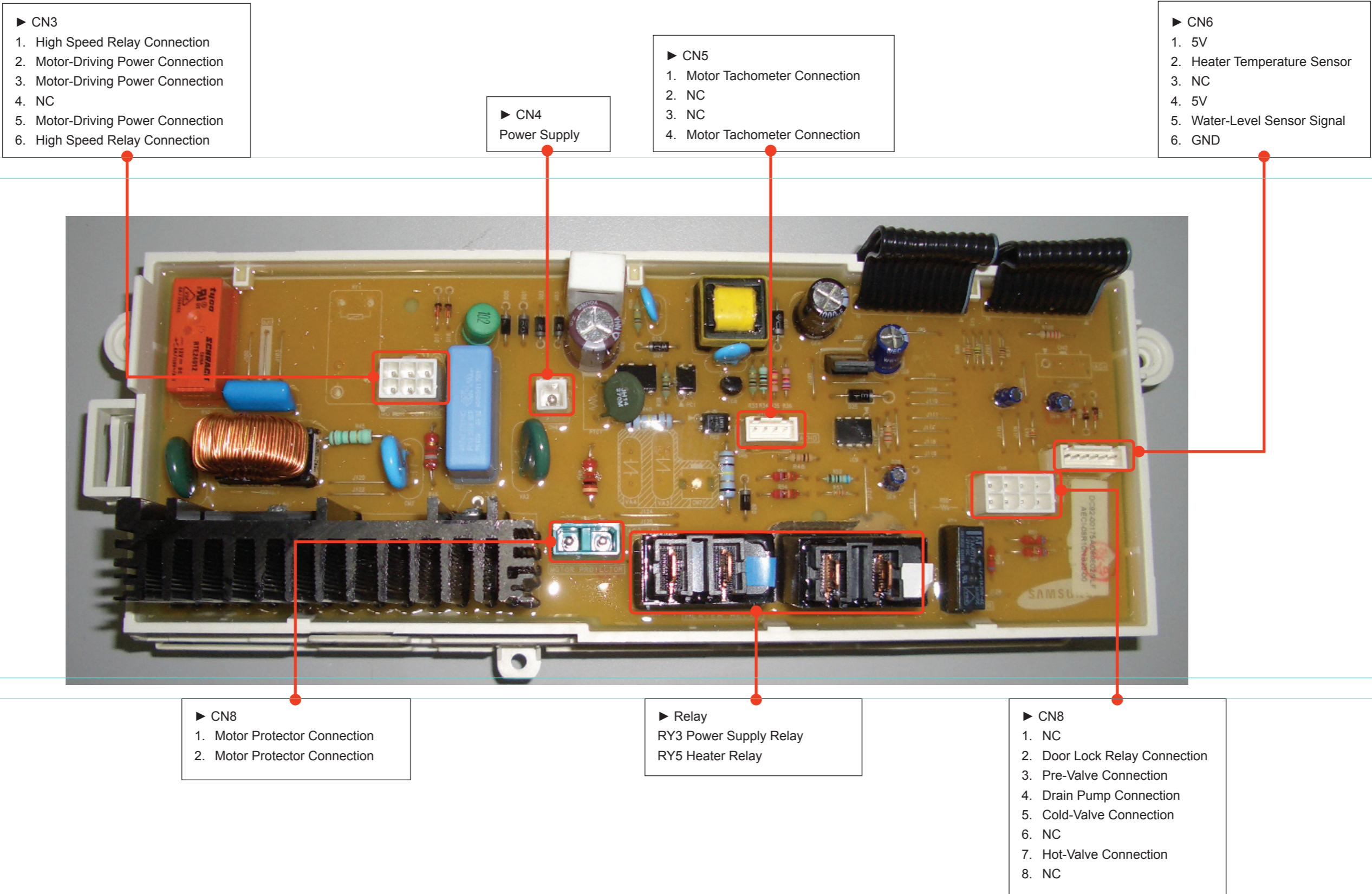
## 6. PCB DIAGRAM

### 6-1. MAIN PCB

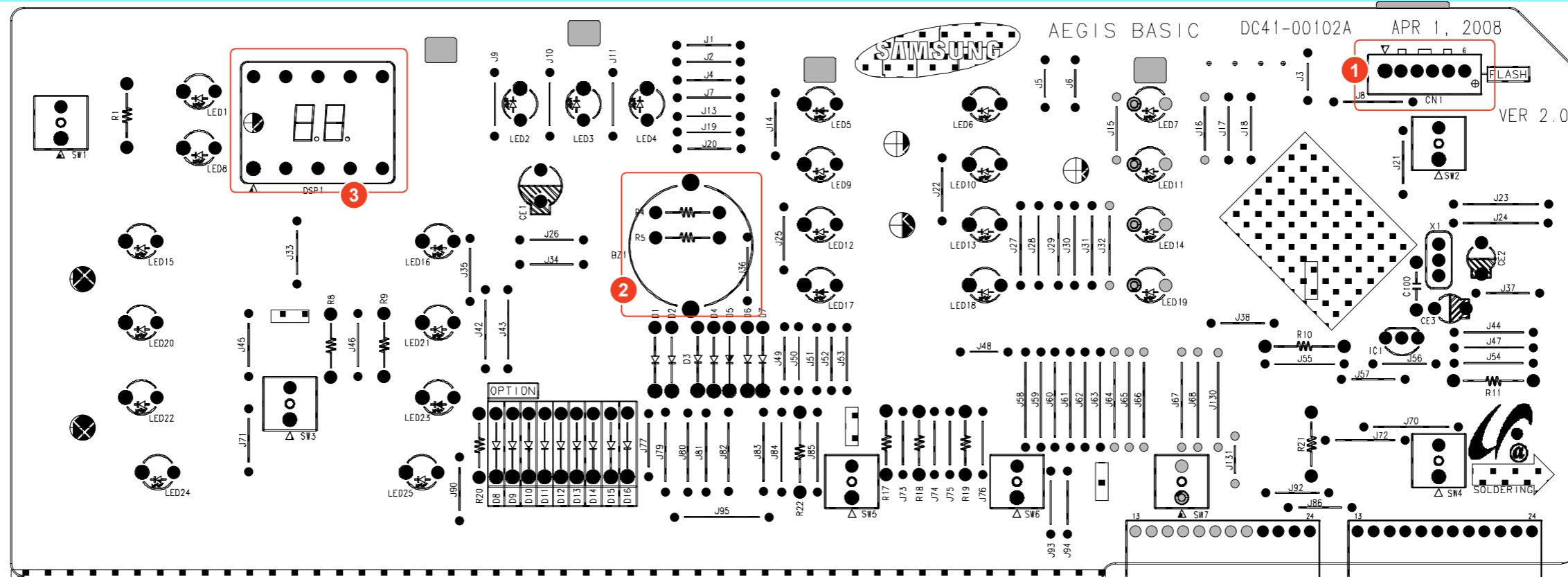


Location	Part No.	Function	Description
1	RY3	Main Relay	Receive 220 ACV to operate the PBA
2	RY5	Heater Realy	For driving the heater power
3	CN9	Motor Protector Connection Terminal	Protects the motor against abnormal current
4	CN6	Water Level and Thermal Sensor Connection Terminal	Detect the water supply / drainage and the heater operations
5	CN8	Terminal for Each Driving Section	Locks the door, supplies cold/hot water and operates the drain motor
6	CN5	Motor Tacho Connection Terminal	Controls the speed of the motor with the tachometer
7	CN4	Power Supply Terminal	Receive 220 ACV to operate the PBA
8	CN3	Motor Power Supply Terminal	Detects whether the motor is operating normally
9	CN2	Silver-Nano Control Connection Terminal	Controls the behavior of the silver-nano control PBA

## 6-2. CIRCUIT DIAGRAMS OF MAIN PARTS

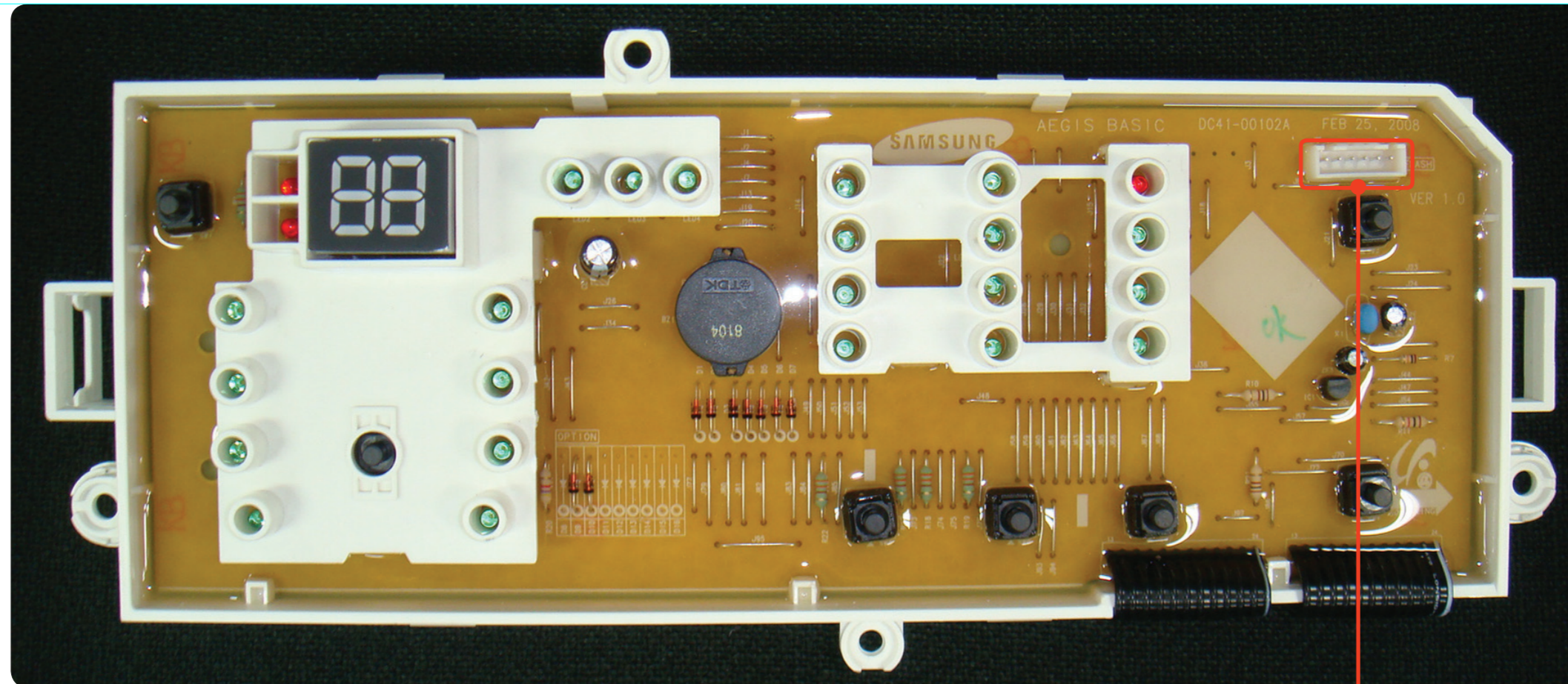


6-3. SUB PCB



Location	Part No.	Function	Description
1	CN1	Program Writing	Connect when writing a program for updating or modifying the software
2	BZ1	BUZZER Circuitry	Emits a sound when a menu key is pressed or when a program is finished
3	DSP1	Time Display	Displays the remaining time of the selected cycle

6-4. DETAILED DESCRIPTIONS OF CONTACT TERMINALS (SUB PCB)



- ▶ CN1
- 1. Program Writing ISP\_TEST Connection
- 2. GND
- 3. 5V
- 4. Program Writing RESET Connection
- 5. Program Writing TX Connection
- 6. Program Writing RX Connection