



HCD Series

Hot-Water Pressure Washer

Diesel / Skid Model

#1 in North America for High-Pressure Cleaning Equipment

Universal illustrated instructions for operator safety and owner liability protection



Heater coil carries a 5-year warranty

Durable, **horizontal-style hot water coil** made of 1/2-inch, Schedule 80 steel pipe and cold rolled for years of leak-free operation; with insulated **stainless steel coil wrap** and easy coil access design

Thermal pump saver valve protects against hot-water damage by venting recirculated water

Pressure Relief Valve attached to discharge side of heating coil protects against excessive pressure and heat

Reliable **Lombardini diesel engine** with **electric start**

Water-resistant control panel with adjustable thermostat, hour meter and burner on/off switch

Adjustable upstream detergent injection provides high-pressure sudsing for better cleaning

Rugged chassis made of 1-1/4-inch steel and painted with an **epoxy powder coat finish** for all-weather resistance

Rust-free polyethylene fuel tanks for hours of uninterrupted operation (20 gallon fuel tank)

Four conveniently mounted **nozzles** to vary fan spray

Power platform cushioned on 8 **vibration isolators** for smoother operation and longer life



Hotsy-designed Triplex pumps carry a 7-year limited warranty

Heavy-duty, insulated trigger gun with fatigue-free handle

HCD-563569 E
27-HP Lombardini diesel engine
5.6 GPM @ 3500 PSI; Belt Drive

Tangle free, **swivel crimp fitting** positioned on hose for ease of operation

50-ft. **wire-braid hose** with **safety hose guard** for burst protection

FEATURES

- Lombardini Diesel Engine
- 4.4 GPM @ 3000 PSI
- Belt Drive / Electric Start
- Completely Self-Contained

HCD SERIES Hot Water Pressure Washer

■ Lombardini Diesel Engine ■ 4.4 GPM @ 3000 PSI ■ Belt Drive / Electric Start ■ Completely Self-Contained ■ 7-year pump warranty

Designed for tough, affordable industrial cleaning.

SPECIFICATIONS

BELT DRIVE

MODEL	GPM	PSI	ENGINE	FUEL	CC's (HP)	BURNER	BTU/HR	PUMP MODEL	PUMP RPM	DIMENSIONS	SHIP WT (lbs)
HCD-563569E	5.6	3500	Lombardini	Diesel	27	12V DC	411,000	HM4035R.2	1350	51"LX44" WX41"H	1195



Clean better with Hotsy detergents

Hotsy pressure washers and parts washers clean best when matched with specially formulated Hotsy detergents. More than 40 liquids and powders meet every cleaning need imaginable. Nearly all contain Hotsy's exclusive advanced-formula HCC additives to help prevent scale build-up and to fight corrosion in your equipment. Most Hotsy detergents are USDA and Canadian Agriculture approved. All are highly concentrated, so a little goes a long way.

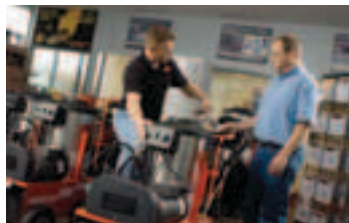
Looking to save time and money? See a Hotsy foamer in action!



Spend some time with a Hotsy Expert

Hotsy has more than 160 local distributors in North America, all factory-trained to properly evaluate your high-pressure cleaning needs.

Over 80% of Hotsy's distributors have been supporting Hotsy systems for more than 20 years.



Rely on our network of seasoned service professionals for the safest, most effective and most efficient solution to your specific cleaning need.

OPTIONS

- **Steam Combination**—when steam is preferred
- **Portagear Kit**—includes pneumatic wheel kit and handle for machine mobility

Hotsy Accessories customize your application for top performance



High-pressure turbo nozzles for faster cleaning

360° Pivot and non-pivot hose reels keep hose neatly stored and shop areas safe



Heavy-duty, high-pressure hoses in lengths up to 150-ft.



Rotary surface cleaner attaches to your pressure washer; reduces overspray and zebra striping

Telescoping wands extend to 24' to reach high places without scaffolding



Distributed by:



Tel: (800) 525-1976 Fax: (888) 880-9631
 www.Hotsy.com email: info@Hotsy.com
 P/N Web Only Effective 8/12 Specifications & product descriptions subject to change without notice. ©2012 Hotsy
 A member of KÄRCHER North America

NOTE: We are constantly improving and updating our products. Consequently, pictures, features & specifications in this brochure may differ slightly from current models. Flow rates & pressure ratings may vary due to variances allowed by manufacturers of our machine components. We attempt to keep our machine performance within ± 5% of listed specifications.