



avitor

AUDIO VISUAL & IT



AVITOR
COLLECTION

ISSUE NUMBER 1 | NOVEMBER 2023

INTRODUCING THE AVITOR COLLECTION

Avitor Group are pleased to launch our first showcase brochure, the Avitor Collection.

The Avitor Collection spotlights our brand portfolio and some of the complete solutions we supply to achieve the perfect AV environment - from MS Teams rooms to Education, whatever your requirement or vertical focus, we can provide the perfect kit with a high level of service.

Bringing together the best of LED, Unified Communications, Commercial Display, Digital Signage, software, mounting solutions and cables. Avitor Group, a trade only distributor, focus on key brands for core solutions - enabling a quicker route to supply and a simple order process.

With regular updates to the Avitor Collection - from new vertical inclusion, new Vendors and case studies - follow Avitor Group Distribution on LinkedIn and request our weekly newsletter to keep up to date with all news and developments. We can also provide a stock file and price list for you.

With Avitor Ireland being the fastest growing AV Distributor in Ireland and the more recently formed Avitor UK - Avitor Group provide a complete solution distribution route in both the UK and Irish markets, with experienced local sales teams. Offering core brands with a focus on ease of supply, customer experience and technical knowledge.

Need further information on any of our brands, product ranges or further information on the Avitor Group? Contact a member of our helpful, technical sales team and we'll be happy assist you to win that project!

We look forward to developing our partnerships with you.



CONTENTS

Complete Solutions

LED	5-8
Teams meeting rooms	9-10
Collaboration	11-12
Education - interactive classroom	13-14
Digital signage	15-20
Indoor	15-18
Outdoor signage	19-20
Retail	21-22
Workspace	23-24
Hybrid working	25-26

Vendor Spotlight

Display, Interactive Solutions & Digital signage	29-34
Newline	29-30
Vestel	31-32
Hisense	33-34
Allsee	35-36
Smart Office Solutions	37-40
Smart	37-38
GoBright	39
Nureva	40
Unified Communications	41-42
Yealink	41-42
LED	43-46
LED Studio	43-44
Unilumin	45-46
Software	47-50
NowSignage	47-48
Bluescape	49-50
Accessories	51-54
Neomounts	51-52
Kordz	53-54
Avitor showroom and Experience Centres	55-56
Partner Product Demonstration and Experience Centres	57-58
Sales process	59
Open a Trade Account	59
Meet the team	60

COMPLETE SOLUTIONS

LED	5-8
Teams meeting rooms	9-10
Collaboration	11-12
Education – interactive classroom	13-14
Digital signage	15-20
Indoor	15-18
Outdoor signage	19-20
Retail	21-22
Workspace	23-24
Hybrid working	25-26



COMPLETE SOLUTIONS LED SOLUTIONS

LEDstudio

EDGE SERIES LED DISPLAY

Introducing the groundbreaking 55" EDGE LED display - a game-changer in large format display technology. The world's first single diecast cabinet, matching the size of the beloved LCD videowall 55" panel. Experience unmatched quality and affordability with this cost-effective alternative to videowalls.

The 55" EDGE is the perfect, cost-effective solution for creating stunning, seamless visuals for an array of visual applications. From digital signage to boardrooms, reception areas, and control rooms, the 55" EDGE offers a versatile alternative to LCD video walls.



SOLARIS CHIP ON BOARD, COMMON CATHODE, MICROLED

Embodying the pinnacle of COB (Chip-On-Board) common cathode pixel technology. SOLARIS is a testament to sustainability, operating with remarkable efficiency by using up to 46% less energy than comparable SMD displays of the same size and resolution.



NOWSIGNAGE

CLOUD-BASED CMS DIGITAL SIGNAGE SOFTWARE FOR ANY SCREEN, ANYWHERE.

NowSignage makes multi-screen management easy for all users. With a strong commitment to customer satisfaction, NowSignage offers reliable customer support and is adaptable to current trends, making sure your digital signage reaches its maximum potential at all times.



COMPLETE SOLUTIONS LED SOLUTIONS

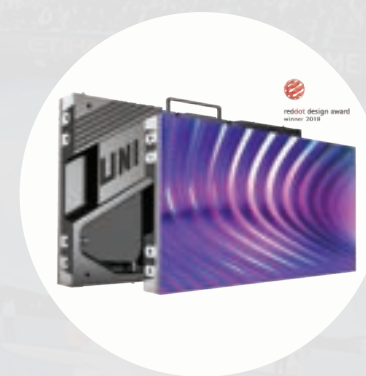


MANCHESTER CITY FOOTBALL CLUB

- PRODUCT: **USPORTX6**
- SCREEN SIZE: **446SQM**
- LOCATION: **UK**

The City of Manchester Stadium is a professional football stadium in Manchester, England. Unilumin provides 446 square meters of IP65 high-protection double-layer perimeter screens, and the project passed the UEFA test with world-class product performance, very suitable for outdoor all-weather use.

The soft rubber protective cover and silicone soft mask are designed to ensure that players are protected from injury and meet the impact of external forces on the screen. The project uses Virtual Technology to allow television viewers in different regions to see different ads on the double-layer perimeter screens, supporting HD display and precision placement advertising to improve the value of advertising.



UPANELIII

Intelligent MDC mode – realize quick switch to different scene modes.



UMICRO

Displays more vivid and detailed content EDL technology for ultra-high consistency.



UPANELSII

Shape the Future Of Connectivity. Ensuring Energy Efficiency User-level Experience.

COMPLETE SOLUTIONS MS TEAMS MEETING ROOM



Yealink

MVC400

MICROSOFT TEAMS ROOMS SYSTEM FOR HUDDLE AND SMALL ROOMS

Getting started with Yealink UVC40, the all-in-one USB video bar offers a video and voice experience with an integrated AI-powered camera, microphone arrays and speaker. With the MTouch II and MCore mini-PC, Yealink MVC400 video solution for Teams conference rooms brings a dedicated MTR system that meets the requirements of focus and small meeting rooms.



UVC84-BYOD

MEETING KIT FOR MEDIUM AND LARGE ROOMS

Yealink UVC84-BYOD meeting kit is dedicated for medium and large rooms with UVC84 4K camera, audio devices and BYOD box for the complete meetings with any UC platforms. Users can enjoy the easy plug-and-play installation, excellent video and audio experience with the cost-effective solution.



MVC-BYOD EXTENDER

UNLEASH MEETING ROOMS POTENTIAL

Yealink MVC-BYOD-Extender supports the transformation between Microsoft Teams Rooms (MTR) and different types of UC platforms. Bring your own device, plug the extender USB cable into the laptop, and start a video meeting whatever you want.



Neomounts®

FL55-875BL1 & AFL-875BL1

NEOMOUNTS MOTORISED FLOOR STAND WITH VIDEOBAR & MULTIMEDIA KIT

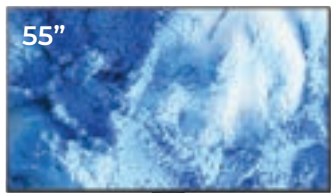
The Neomounts AFL-875BL1 is a videobar & multimedia kit optional for the FL55-875BL1 mobile floor stand and WL55-875BL1 wall mount. The kit enables the installation of a separate cam shelf and multimedia device shelf to the trolley.

Hisense

55B4E31T

55" 4K UHD DIGITAL SIGNAGE DISPLAY

The Hisense E Series 18/7 display delivers 500 nits brightness for enhanced visibility in brightly lit environments. This higher brightness helps Hisense Commercial Displays provide better colour accuracy and vibrancy, meaning colours appear more lifelike and true to their intended experience, creating a more immersive viewing experience.



COMPLETE SOLUTIONS COLLABORATION



Yealink

AVITOR COLLECTION 2024

MEETINGBOARD

FROM MANAGER OFFICE TO LARGE ROOMS

Yealink MeetingBoard consists of a 4k camera, crystal-clear speaker, full-duplex microphones, and a 65/86 inch smart collaboration whiteboard to provide an immersive meeting experience and allow collaboration anytime, anywhere.

With the 4K camera and powerful encoding and decoding capabilities, MeetingBoard realizes truly smooth and stable HD Teams meetings. Powered by AI technology, the camera brings diverse views such as Auto Framing, Speaker Tracking, Multi-Focus Framing and Picture-in-Picture.



MEETINGBAR A20

ALL-IN-ONE VIDEO COLLABORATION BAR

Designed with simplicity, Yealink MeetingBar A20 integrates the conference room webcam, microphone and speakers into an all-in-one system. No PC or individual components are required, allowing plug-and-play for a dedicated small meeting room setup within minutes.



CTP18

COLLABORATION TOUCH PANEL

CTP18 is a collaboration touch panel that can be paired with video conference endpoint. Its 8-inch touch screen and native Teams or Zoom controller experience allow users to join or control a meeting quickly and effortlessly.



WPP30

WI-FI 6 MODULE

Thanks to the high-performance 2x2 MIMO, Wi-Fi 6 module, WPP30 delivers immediate response, smooth and trouble-free presenting experience with low latency.

ALL IN ONE MEETING ROOM SOLUTION AND KIT

COMPLETE SOLUTIONS INTERACTIVE CLASSROOM



newline

LYRA INTERACTIVE SMART WHITEBOARD 65"

**THE POWERFUL, SECURE AND SAFE SOLUTION
FOR NEXT-GEN CLASSROOMS!**

All Newline interactive display features have been developed to offer you maximum support without any complicated procedures that detract from the essential interaction between teachers and students.

Newline's aim is to make touchscreen use and integration in the classroom as easy as natural as possible in order to let you focus on teaching exactly how you want to, whilst offering students the help they need.

USER PROFILE SETTINGS

Home screen and carefully tailored settings can be saved for teachers, students, teams, or departments. Eliminate the hassle of device and user switching – no more logging into devices and customizing the screen for your session. Perfect for today's flexible learning environments.

PLUG AND PLAY ALL THE WAY

Streamlining your setup with fast and easy USB-C connection. Thanks to plug & play USB-C, your entire setup process requires plugging in one cable – which transports data, audio, video and power. Connect and disconnect immediately or switch devices without any hassle – just plug in and get straight to teaching. No more delays, troubleshooting, or fidgety kids!

Neomounts®

FL55-875BL1 NEOMOUNTS MOTORIZED FLOOR STAND

The Neomounts FL55-875BL1 MOVE Lift is a mobile floor stand for displays up to 100" with a maximum weight capacity of 110 kg. The trolley has 65 cm motorized height adjustment (35 mm/second), is operated with a wired remote control and features an anti-collision system for extra safety. A lockable, ventilated hardware compartment with cable opening is included and optional for installation.

COMPLETE SOLUTIONS INDOOR DIGITAL DISPLAY

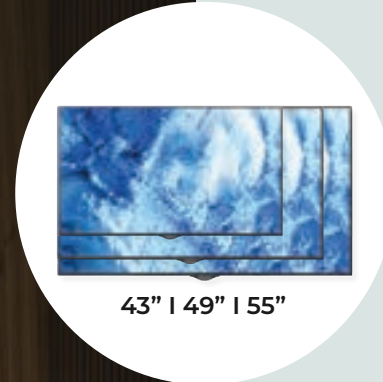


NOWSIGNAGE

CLOUD-BASED CMS

DIGITAL SIGNAGE SOFTWARE FOR ANY SCREEN, ANYWHERE.

NowSignage makes multi-screen management easy for all users. With a strong commitment to customer satisfaction, NowSignage offers reliable customer support and is adaptable to current trends, making sure your digital signage reaches its maximum potential at all times.



43" | 49" | 55"



HISENSE BM SERIES - 43" | 49" | 55" 4K UHD DIGITAL SIGNAGE DISPLAY - 24/7 OPERATION

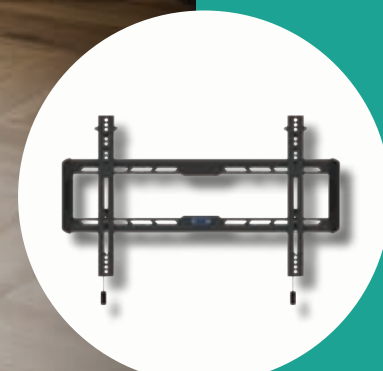
Hisense Commercial Display solutions are perfect for high volume retail and corporate installation. A combination of seamless design and enhanced brightness ensure digital content vividly stands out from the crowd. The Hisense M Series display delivers 500 nits brightness for enhanced visibility in brightly lit environments.

NMPRO-WMB3 NEOMOUNTS PRO MENU BOARD WALL MOUNT

The Neomounts Pro menuboard wall mount, model NMPRO-WMB3, is a tiltable wall mount for three flat screens up to 55"/65". This mount is a great choice when you want the ultimate viewing flexibility with your flat screen.



55"



HISENSE BM SERIES 55" 4K UHD DIGITAL SIGNAGE DISPLAY

Hisense Commercial Display solutions are perfect for high volume retail and corporate installation. A combination of seamless design and enhanced brightness ensure digital content vividly stands out from the crowd. The Hisense M Series display delivers 500 nits brightness for enhanced visibility in brightly lit environments.

WL35-550BL16 NEOMOUNTS TILTING WALL BRACKET WL35

The Neomounts Pro menuboard wall mount, model NMPRO-WMB3, is a tiltable wall mount for three flat screens up to 55"/65". This mount is a great choice when you want the ultimate viewing flexibility with your flat screen.



RESIDENTIAL DISPLAY SOLUTIONS

COMPLETE SOLUTIONS INDOOR DIGITAL DISPLAY



TAO55H KIOSKS PCAP DIGITAL

This all-in-one solution is designed for the fast food sector but can also be used in a range of retail spaces providing a PCAP touch screen, QR Code scanner, printer in one solution. There is also space to integrate a credit card payment reader.

The numerous benefits for self service systems are clear, from allowing staff to focus more on customer service, reducing queues and waiting times as well as improving and optimising the overall customer experience.



L50HD FREESTANDING DIGITAL POSTERS

The tempered glass face, rounded corners, super slim perceived depth, aluminium surround and narrow border around the screen give a captivating tablet-like aesthetic. They also protect the internal components from potential damage in public spaces.

Designed for continuous use in public spaces, these displays utilise commercial grade LCD panels, LED backlights and internal components. This means they can run 24/7 for over 70,000 hours. To avoid tampering, they also have no external buttons or controls.



ALLSEE CMS AWARD WINNING CONTENT MANAGEMENT SYSTEM

With the ALLSEE Digital Signage CMS you can send content from your PC to your display or media player in a matter of seconds using a user-friendly drag-and-drop system. Specifically designed to be used with the screens and media players that ALLSEE manufacture; providing an all-in-one integrated solution.

COMPLETE SOLUTIONS OUTDOOR DIGITAL DISPLAY



OT55E-T2

ANDROID FREESTANDING DIGITAL POSTERS

With four times the resolution of Full HD you can achieve a truly immersive experience with an incredible image quality. 4K content can be displayed via USB plug and play, via our CMS My Signage Portal, third party Android software or by using third-party devices via the HDMI input, giving you ultimate flexibility.

The thicker robust enclosure, tempered glass face, rounded corners, aluminium surround and classic piano black colour give an attractive colossal tablet-like aesthetic. They also protect the internal components from potential damage in public spaces.



OAB43HD8-C

OUTDOOR DIGITAL ANDROID BATTERY A-BOARDS

With a moulded polymer rear these displays are incredibly lightweight and this, along with their rugged castors, means they can easily be moved by one person. The specialised castors are designed to minimise vibrations on uneven surfaces, protecting the internal components for a longer product lifespan.

These displays feature a tempered glass front that has been specially treated to give an anti-glare finish. This completely diffuses external light reflections without reducing the brightness of the screen, improving the readability of on-screen content.



ALLSEE CMS

AWARD WINNING CONTENT MANAGEMENT SYSTEM

With the ALLSEE Digital Signage CMS you can send content from your PC to your display or media player in a matter of seconds using a user-friendly drag-and-drop system. Specifically designed to be used with the screens and media players that ALLSEE manufacture; providing an all-in-one integrated solution.

COMPLETE SOLUTIONS RETAIL



TAO55H

KIOSKS P CAP DIGITAL

This all-in-one solution is designed for the fast food sector but can also be used in a range of retail spaces providing a PCAP touch screen, QR Code scanner, printer in one solution. There is also space to integrate a credit card payment reader.



STRETCHED DIGITAL SIGNAGE

PERFECT IN RETAIL STORES AND SUPERMARKETS

Whether being used as part of an end-aisle display or as a unique individual screen, this solution offers a versatile range of possible applications. The flexibility of portrait or landscape use and the ultra-wide aspect ratio make them the perfect accompaniment for our LCD Shelf Edge Displays.



RETAIL ESL

ELECTRONIC SHELF LABELS

Electronic shelf label systems are used to display and automatically update product pricing shown on shelves. The label management software provides an intuitive way for users to easily manage pricing and stock information for every product across their entire network of stores.



COMPLETE SOLUTIONS WORKSPACE

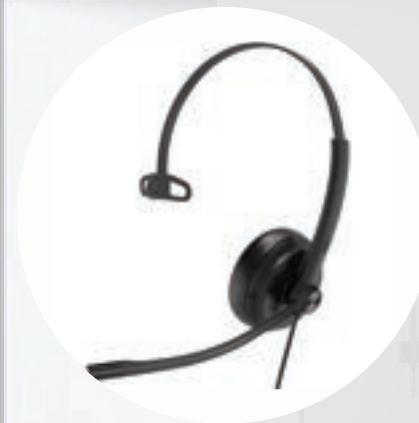


Neomounts®

DS70S-950WH1

HIGH CAPACITY / SUITABLE FOR CURVED SCREEN

The Neomounts DS70S-950WH1 NEXT One is a full motion desk mount for screens up to 49". The DS70S-950WH1 is a true all-in one solution for small to large displays. The NEXT One features a strengthened head specifically designed to also support curved ultra-wide screens and features a higher maximum weight capacity up to 18 kg (curved 15 kg).



Yealink

YEALINK UH34

MONO USB WIRED HEADSET

With full capability, the UH34 only weights 82.5g for the Mono and 118g for the Dual, which is 10%-30% lighter than other headsets in the same range. The extremely lightweight design enables all-day wearing comfortable without pressure.



Hisense

HISENSE BM SERIES - 55"

4K UHD DIGITAL SIGNAGE DISPLAY - 24/7 OPERATION

Hisense Commercial Display solutions are perfect for high volume retail and corporate installation. A combination of seamless design and enhanced brightness ensure digital content vividly stands out from the crowd. The Hisense M Series display delivers 500 nits brightness for enhanced visibility in brightly lit environments.

COMPLETE SOLUTIONS HYBRID WORKING

newline



FLEX

LEADING THE NEXT GEN OF DESKTOP COLLABORATION

Newline has developed an all new concept that enables you to communicate intuitively in the digital workspace. A product that will revolutionize your working day.

Capturing your voice in a pleasant way without echo or background noise, seeing you from the right angle in a natural way and having the opportunity to intuitively express yourself by touch and writing are needed to get there. Meet FLEX!



Neomounts®

NS-WS300BLACK

NEOMOUNTS SIT-STAND WORKSTATION

The Neomounts sit-stand workstation, model NS-WS300BLACK, converts a table top into a healthy sit-stand workstation. This workstation includes a spacious upper display surface and lower keyboard and mouse desk. It features spring-assisted lift mechanism that lets you switch easily between sitting and standing in just a few seconds.



FPMA-D890WHITE

NEOMOUNTS MONITOR DESK MOUNT

The Neomounts desk mount, model FPMA-D890WHITE is a tilt-, swivel and rotatable desk mount for flat screens up to 30". This mount is a great choice for space saving placement on desks using a desk stand.



DS 15-545WH1

NEOMOUNTS TABLET STAND

The Neomounts DS15-540WH1 is an universal tablet stand for tablets from 4,7" up to 12,9" with a weight capacity of 1 kg. The tablet stand is ideal for hands-free video calling, watching a movie or playing a game.



VENDOR SPOTLIGHT

Display, Interactive Solutions & Digital signage	29-34
Newline	29-30
Vestel	31-32
Hisense	33-34
Allsee	35-36
Smart Office Solutions	37-40
Smart	37-38
GoBright	39
Nureva	40
Unified communications	41-42
Yealink	41-42
LED	43-46
LED Studio	43-44
Unilumin	45-46
Software	47-50
NowSignage	47-48
Bluescape	49-50
Accessories	51-54
Neomounts	51-52
Kordz	53-54



newline

Connect. Create. Collaborate.

LET'S REVOLUTIONISE THE WORKSPACE TOGETHER!



- ✓ 55" up to 98" touch screens
- ✓ Extensive range of interactive displays
- ✓ 3-years warranty for corporate and 5-years warranty for education deinstall and reinstall
- ✓ Full solutions for corporate and education
- ✓ Showroom in London and Manchester
- ✓ Product demonstrations

4K   700 NIT   

Who we are.

“

A grounded, authentic industry-leading technology company with the heart, soul and drive of a start-up.

VESTEL



Our displays have been designed to fit into your world. Ranging from 32” up to 98”, and packed with features including built-in OPS slots, SoC and auto-launch features, our goal is to help you get your message across as easily as possible.



Warranty Support

3 years Mainland UK de/re as standard

Hisense | COMMERCIAL DISPLAY



DIGITAL SIGNAGE



E-Series 55"

4K UHD Digital Signage Display - 18/7 Operation

- UHD Display, Brilliant Picture
- Landscape & Portrait
- Multi-Format Signal Input
- Support WiFi
- With SoC, Support APK Installation

M-Series 43" | 49" | 55" | 86"

4K UHD Digital Signage Display - 24/7 Operation

- Landscape & Portrait
- High Brightness 500nit
- Anti-glare coating
- Wireless screen sharing
- Failover
- VisionInfo CMS

WF-Series 55"

Window Facing High Brightness Display

- High Brightness 2500 Nits
- Landscape & Portrait
- Round-the-clock operation
- Smart brightness sensor
- 178° Wide viewing angle

INTERACTIVE DISPLAYS

BE-Series 75" | 86"

Advanced Interactive Display (with optional plug-in camera)

- 4K Ultra HD, Brilliant Picture
- One Touch Transmission
- Plug-in camera & ultra wide 120° angle
- Six array microphones without auditory distraction
- Automatic sound bar
- Multi-voting selection & real time comments



LED SOLUTIONS



HAIO-Series 138" | 163"

All-In-One LED

- Easy installation & maintenance
- Simple power connection & power saving
- Operating in a humid environment
- Seamless splicing screen



Your Digital Signage Partner



What sets us apart from other display manufacturers who offer commercial screen solutions is that we are one of the world's biggest and most established manufacturers that is exclusively dedicated to the commercial display and Digital Signage market. Using our years of industry expertise we are fully equipped to provide complete turnkey solutions; developing software to be used alongside the hardware that we manufacture. Thanks to this factor, as well as the huge diversity in the solutions that we offer, we are a one-stop-shop for all Digital Signage integrators and resellers.

We understand that every Digital Signage project is different and that is why working with a dedicated manufacturer such as ourselves can be so beneficial. We can help you to find a tailored solution for your clients by either manufacturing bespoke solutions or altering our existing products to meet their exact needs.

Our Digital Signage Solutions Include:

- Digital Posters
- Menu Boards
- Window Displays
- Commercial Monitors
- Direct View LEDs
- Outdoor Displays
- Touch Screens
- Battery Powered Screens
- LCD Video Walls
- Wide Format Displays
- Small-Sized Screens
- Media Players

Outside our standard range of solutions we can also manufacture bespoke Digital Signage solutions



Our Award Winning Digital Signage Software Solution

Our Content Management System Software My Signage Portal allows anybody to design and schedule content, regardless of their technical knowledge or resources. Designed to work in conjunction with Allsee Digital Signage hardware, we were awarded the Queens Award for Enterprise: Innovation for our ground breaking solutions that makes Digital Signage accessible to everyone.

Who are we?

Founded in the UK in 2007, Allsee Technologies has quickly developed into a market leading Digital Advertising Display Manufacturer with an impressive Blue Chip client portfolio. To meet the demand of our global distribution network of resellers, our factory in China has the capability to produce 2,000 displays every day. We have offices in the UK, Europe, China, the US and Africa. Our success has been driven by our focus on delivering supreme quality, market leading customer service and unparalleled industry expertise. We are the only manufacturer committed to simplifying the emerging technology of Digital Signage for our customers.





SMART®

ONLY SMART enables multiple users to intuitively write, erase, touch, and gesture at the same time, across platforms and apps, without interfering with another's tool choice.



The world's **ONLY** interactive technology for true student collaboration

Solutions for the modern workplace

Ready to use when you walk into the room. No training needed: just pick up a pen and write. With iQ embedded computing, SMART interactive displays are the digital hub of your workspaces.

NEW!



SMART Board QX Pro series with iQ

The all-in-one powerhouse display for seamless collaboration and interactivity.



SMART Board MX Pro series with iQ

The display that packs a punch when it comes to creative brainstorming and productivity.



SMART Board GX series

Connect and engage teams affordably without sacrificing the SMART difference.

SMART Podium Interactive pen display

Make anything interactive.



The world leader in interactive technology



THE GAME CHANGER

MX series (V4)

iQ embedded computing

- Powered by Android 11
- OPS upgradable
- Automatic OTA updates & upgrades

iQ whiteboard

- Live broadcast to connected devices with multi-way inking
- Presenter and participant-paced navigation modes
- Ready-made digital manipulatives
- Native and app-based screen share

4k display features:

- 2 x 20W speakers
- Integrated mic array
- NFC Reader
- Sensors: ambient light
- 2x USB C 3.2 15W (front) 65W (rear)



THE BETTER BASIC DISPLAY

GX series (V2)

Embedded Android computing

- Android 11
- OTA updates

Android-based whiteboard

- Native and app-based screen share

Features:

- 2x 20W front-facing speakers
- Sensors: ambient light
- 2 x USB C

Compare industry-leading interactivity

SMART TeamWorks



Launch meetings faster

Launch meetings with one touch from the home screen on most popular conferencing platforms such as Microsoft Teams, Zoom, Google Meet, Webex and more.



Collaborate and share

Wirelessly screencast up to 8 devices with native Airplay, Google Cast and Miracast. Share content remotely and increase collaboration with mark-up capabilities on shared screens.



Leverage dynamic content

Add and interact with dynamic content in a collaborative whiteboard. Draw and work with multiple objects including images, PDFs, Microsoft Office files, sticky notes and more.



Windows 11 compatible

Enjoy video-conferencing platform versatility and extensive whiteboard collaboration on a powerful Windows 11 computer with a connected SMART OPS PC.



Bring your device

Access your OneDrive, Google Drive and Dropbox files and personal calendar directly from TeamWorks by simply scanning a QR code.



Save and share your work

After a meeting, save your workspace to your TeamWorks app or save and share a PDF recap with meeting participants.

Room Booking

Check the availability of meeting rooms and book your room within seconds. Combine our software with a variety of hardware panels to ensure staff can clearly see room availability, report issues and make ad hoc bookings.



Desk Booking

Book desks within seconds via the GoBright app, Teams app, web browser or check in via the hardware. Find the perfect space to work and search for your colleagues to easily collaborate. Need to work as a team? Group bookings allow you to book on behalf of a group of colleagues.



Visitor Management

Whether you have a busy reception area, or an unmanned lobby, with GoBright's Visitor Management Software your guests are welcomed immediately.



View

GoBright's digital signage allows you to display the correct content at the right time and efficiently inform your staff of any upcoming notices.



Wayfinding

Easily find your way through the building with Wayfinding and display upcoming meetings and availability of rooms.



Integrations

- Microsoft Teams
- O365
- Active Directory
- SSO
- Yealink, Philips, ProDVX, IAdea



Mapping

With Mapping employees have a visual display of the entire office and can check the availability of meeting rooms and desks on each floor.



Parking

Check the availability of parking spaces and book your preferred spot directly.



Locker Booking

Vecos are the market leader in the supply and implementation of Smart Locker Technology. With GoBright, you can see and book Vecos lockers that are close to your other bookings for the day.

Audio Conferencing Systems

Powered by Microphone Mist™ Technology, Nureva's HDL audio conferencing solutions have the power to simultaneously process every audio source in a room and deliver a more natural sense of communication. Microphone Mist™ fills a space with virtual microphones in the form of a grid and intelligently auto-calibrates to learn the size of the room. The system is intelligent rather than dumb so it eliminates echo and prioritises the human voice over other noises. This creates natural, seamless audio - a microphone system that "just works" provides a great audio experience.

Active Zone Control

Active Zone Control, an extension of Microphone Mist™, emphasises pickup of the virtual mics in a zone at the front of the room while inhibiting pickup from the virtual mics in the rest of the space. Giving lecturers or presenters the freedom to move around the space.

Camera Tracking

The precise sound location data from the microphone and speaker bars can be used to steer and switch between the third-party cameras in the room, providing remote participants with a clear view of who's speaking at all times.



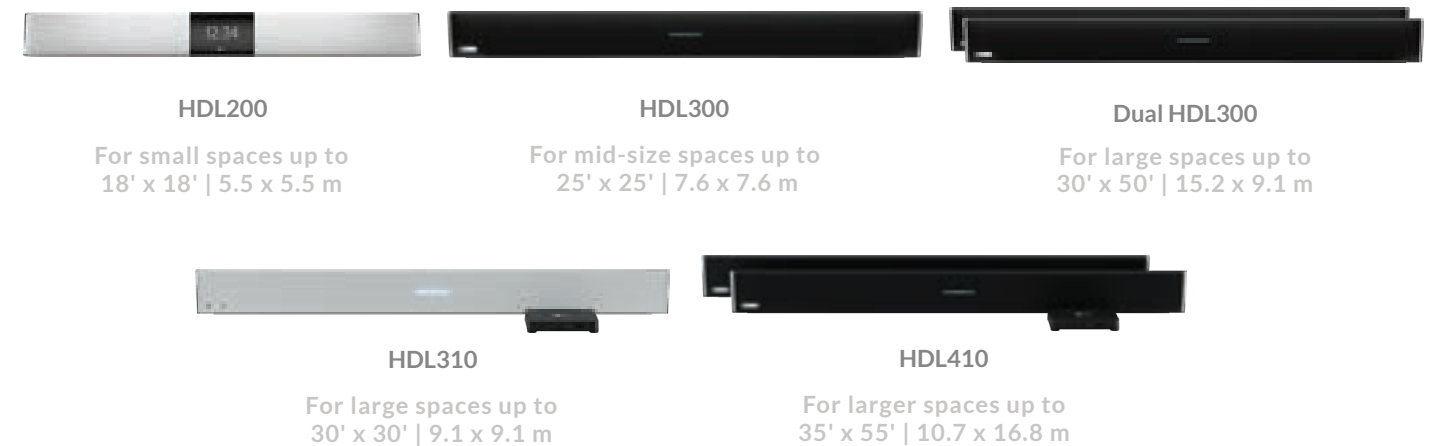
Nureva Console

Intelligent room monitoring means IT Managers always know their rooms are ready. With multiple HDL systems in rooms across the workplace, Nureva's cloud-based Console allows the management across multiple locations from a single, secure dashboard. Whether working on Windows or Mac, this scalable system lets one person configure and maintain all HDL units, regardless of if you have 1 or 10,000.

Voice Amplification Mode

Voice Amplification Mode is designed to work in typical meeting spaces using the HDL300 and Dual HDL300 systems, amplifying the presenter's voice through both microphone and speaker bars in rooms up to 30' x 50' (9.1 x 15.2 m). Voice is picked up via a wireless headset and amplified in the room through the HDL300 speakers. In-room workers have the added benefit of amplified speaker voice, and UCC sharing ensures remote participants continue to have a great listening experience.

A scalable platform to cover any space up to 15.2 x 9.1m



ONE PAGE TO KNOW ALL OF YEALINK SOLUTIONS

© TOP5 Video Conferencing Provider | TOP3 UC Headset Provider | Top1 IP Phone Provider

A NEW-GEN OF MVC SERIES FOR MICROSOFT TEAMS ROOMS ON WINDOWS

DEVICE PORTFOLIO OVERVIEW

Teams Rooms on Windows



Teams Rooms on Android



Speakerphones Headsets USB Camera



Desk Phone Conference Phone



ONE-STOP SOLUTION, WORRY-FREE MANAGEMENT

Get the 'total package' of Yealink's hybrid work solution for any place you work. Experience unified and hassle-free use and management with our comprehensive solution.



Intelligent in Every Room: Medium Rooms (7-11 people)

MVC S60

- Equal layout and multi-stream
- People Identification
- Intelligent audio features
- Supported Copilot



Intelligent in Every Room: Divisible Rooms (> 18 people)

MVC S90

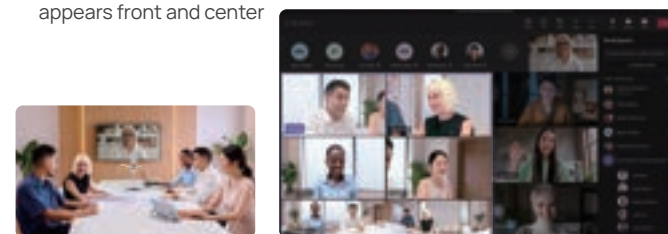
- Easy divide and merge two spaces
- Different angles with multi-camera
- Presenter Tracking in multiple modes
- Flexible audio options
- Supports Multi-Camera Intelliframe



Take Your Teams Rooms to A Higher Level Of Equity

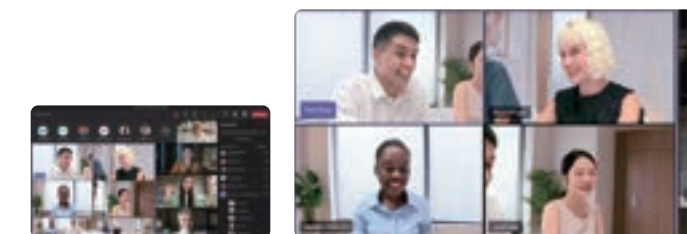
Multi-Stream People Feed

- No one is hidden from view with a 360° panoramic view
- A 10K camera for stunning images
- Individual video feeds of 4 in-room participants, ensuring everyone appears front and center



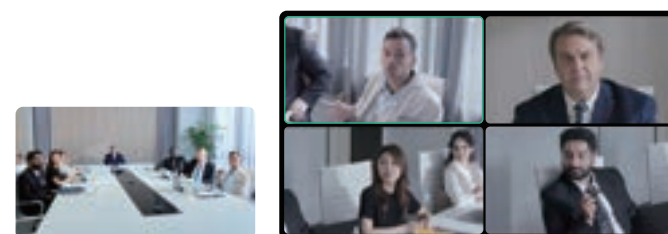
Voice and Face Recognition

- Connect peers by associating names with faces and speeches.
- Enjoy automatic speech-to-text transcription with speakers identified by their names



Multi-Camera Intelliframe

- Focus on the latest 4 active speakers to ensure natural conversations
- Fast and precise tracking for a seamless meeting flow



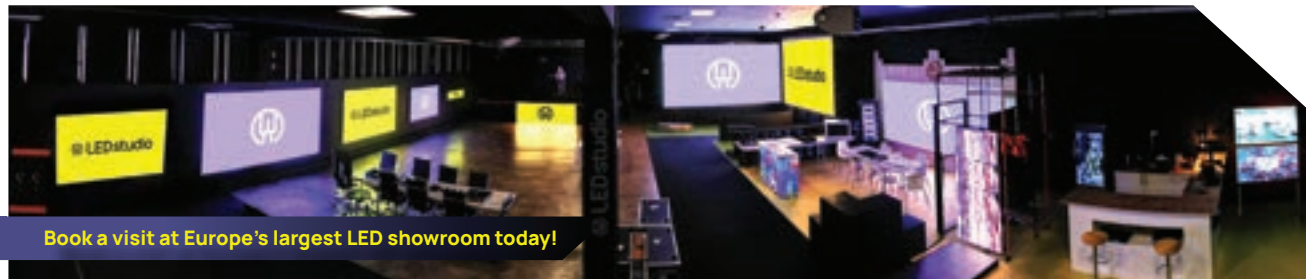
Copilot Integration

- Keep up on action items with AI-generated tasks (coming soon)
- Get a summary of every meeting
- Review content that's most relevant to you
- Translate meeting captions



We **DESIGN**. we **INNOVATE**. we **INSPIRE**.

LED Studio, a multi-award-winning LED display manufacturer, operates out of four global offices to best serve your large format display project needs. With our main office located in the UK, we boast Europe's largest showroom in Swindon. Our additional offices in the US, Cyprus, and Dubai strategically position us to assist you effectively, no matter where your next project is located. Each of our locations is ready and equipped to help you with your next large format display project, offering unparalleled expertise and support.



Book a visit at Europe's largest LED showroom today!

LED Studio's Global headquarters based in Swindon is open 5 days a week for product demonstrations, training, and development.

Our core values lie in LED display education and expertise, sustainable designs, and continuous innovation, ensuring we deliver unparalleled products and services to our valued clients. Join us on this illuminating journey as we redefine the LED display experience.

Without innovation, you can forget sustainable technology

- Robert Bint, Owner & Chief Designer

Hero Products: the EDGE series



Wales Millennium Centre - A 16m wide 55" EDGE display wows visitors as they enter the iconic venue.

LED Studio's Award Winning EDGE Series represents a breakthrough in fine pixel pitch LED displays, offering a truly sustainable, future-proof, and economically conscious alternative to end-of-life 43" and 55" LCD video wall displays. The EDGE series has been meticulously designed with sustainability at its core, aiming to combat the prevailing throwaway technology culture.



- GOB upgrade
- V1 3 pixel technology options
- 1080p, 4k, 8k or custom resolutions
- 16:9 aspect ratio
- Front serviceable
- 100,000+ hours lifetime
- Ultra-thin profile
- Lightweight
- 2 mounting methods
- Energy efficient

SOLARIS (Chip on board, Common Cathode, MicroLED)



Embodying the pinnacle of COB (Chip-On-Board) common cathode pixel technology, SOLARIS is a testament to sustainability, operating with remarkable efficiency by using up to 46% less energy than comparable SMD displays of the same size and resolution.

LED Studio takes pride in strategic investments made in our COB production lines, allowing the provision of SOLARIS at prices that are not only competitive but also offer unmatched value against SMD displays. This competitive pricing model reflects our unwavering commitment to promoting eco-conscious technology solutions, without compromising on quality or affordability.

- Excellent Picture Quality
- Durable
- High Contrast
- Thermal Efficiency
- Easy Install
- DCI-P3 Colour Profile
- 16:9 Aspect Ratio
- Lightweight
- Fixed Resolutions & Custom Sizes
- Energy efficient

46% energy savings vs SMD



Cutting through ESG & sustainability "buzzword & misinformation" campaigns

If it's not using common cathode pixel technology, you should be asking "why not?"

- Ross Noonan - Technical Sales and Marketing Manger

The hidden truth about some "Manufacturers" first and foremost, it's crucial to address a pressing issue in the LED display industry. Many so-called "manufacturers" don't produce their own LED displays. Instead, they source outdated, legacy technologies and label them as sustainable or energy efficient. This deceptive practice not only misleads customers but also contributes to environmental harm, and it's on the rise as more and more manufacturers feel the pressure to jump on the ESG and sustainability "buzzword" bandwagon.



It's important to note that Common Cathode technology is now available across all pixel types, including SMD, Flip Chip, and Chip on Board. This wide availability empowers you to make an

informed decision when sourcing LED displays in the future, and of course, LED Studio offers Common Cathode solutions across a range of our latest products.

Education Links:

- What makes up and LED display: https://www.youtube.com/watch?v=GD1tKVL_ip8
- What are the different pixel technologies: https://www.youtube.com/watch?v=IHosaPglXLw&t=5s&ab_channel=LEDStudio
- Pixel technology deep dive: <https://www.theledstudio.co.uk/blog/led-display-pixel-technologies-explained>
- What is common cathode technology: <https://www.theledstudio.co.uk/blog/what-is-common-cathode-led-display-technology>
- What is GOB? - is it worth the investment: <https://www.theledstudio.co.uk/blog/glue-on-board>

Unilumin

World-class LED displays

World-class LED solutions provider of high quality LED display and lighting products. Unilumin Group has been the world's No.1 exporter of LED displays for over five consecutive years.

Headquartered in Fuhai, Shenzhen, Unilumin has two smart manufacturing bases in Pingshan, Shenzhen and Daya Bay, Huizhou, with first-class R&D, production and experimental equipment.



KSLIM II



UMicro

600 X 337.5mm

- Displays more vivid and detailed content
- EDL technology for ultra-high consistency



Upanel SII

610 X 343mm

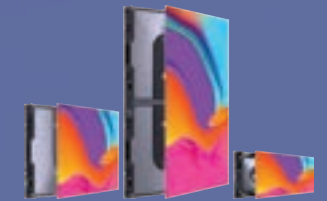
- Shape the Future Of Connectivity
- Ensuring Energy Efficiency
- User-level Experience



ULW III

600 X 337.5/675mm

- Premium viewing experience
- Ultra stable operation
- User-friendly design
- Intelligent management
- Less maintenance trouble



Uslim II

500*250/500/1000

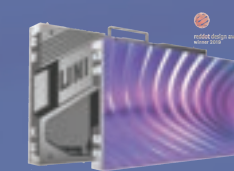
- Impressive Viewing
- Experience Intelligent
- Operation & Maintenance
- Control Various Creative
- Shapes User-friendly Design



UMini III Pro / UMini III

600x337.5mm

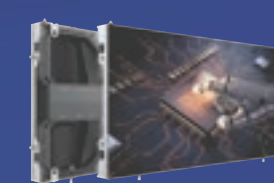
- Impressive viewing experience and dazzling color with 30000:1 super high contrast
- Extremely comfortable experience enhanced by eye protection
- Energy-saving technology in use & standby
- Convenient operation and maintenance



Upanel II

610 x 343mm

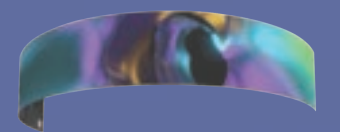
- Intelligent MDC mode – realize quick switch to different scene modes (Optional)
- U-shield protection – high efficient heat dissipation & high protection of IP60
- Front maintenance
- Wireless connection between cabinets – prolonging the life span of the screen



ULW III BROADCASTING V

600 X 337.5/675mm

- Premium viewing experience
- Ultra stable operation
- User-friendly design
- Intelligent management
- Less maintenance trouble



UHF

500mm*500/1000mm

- Dynamic creativity – available for arbitrary arc shape
- Excellent image performance on color uniformity by the high flatness
- Stress is evenly distributed to all parts of modules – Sustainable reliability
- The advanced modular technology fully maximize the screen smoothness

NowSignage is a multi-award-winning cloud-based CMS crafted with unique simplicity, flexibility and scalability.



Footasylum, Retail
LED Video Walls, Branded Promotions, Social Media, Point of Sale.

“We moved our large digital signage network to the NowSignage CMS to find a more effective way to manage our content. The user interface of the NowSignage platform makes it so simple to perform our entire content strategy, including the display of synchronised HD video content, interactive social media walls, and transparent LED walls in an array of custom resolutions.”

All features included out-of-the-box with every license purchase!



University of Chester, Education
Internal Comms, Image and Video Promotions, Catering Comms.

“The NowSignage system is intuitive and easy to use but not lacking in the features that we need. It is incredibly easy to install and maintain across a range of devices and the ability to run SoC has been particularly useful.”

Why choose NowSignage?

Most Affordable

True SaaS, all users, are granted access to the exact same features and functionality at no extra cost. Our aim is to develop and maintain the best CMS on the market.

Secure & Reliable

We pride ourselves on maintaining the correct and latest security processes across all aspects of our platform, holding security and compliance in the highest regard.

Easy To Use

Possibly the easiest to use CMS anywhere in the world today, which means that any end-user can be fully trained and competent on NowSignage within just 30 minutes.

Hardware Agnostic

Hardware-agnostic through a single codebase, you can therefore rest assured that whatever hardware, media player or SoC, NowSignage will just work.

Custom Integrations

Industry leaders in achieving award-winning direct integrations with 3rd party softwares. When we develop an integration, we do it properly with a full API integration.

Superior Support

Uncompromising when it comes to support, we provide unlimited access to pre & post sales support, plus free automatic upgrades as we release improvements.

Hardware agnostic software working across a range of media players and SoC devices!



Wingstop, Quick Service Restaurants
Digital Menu Boards, Window Displays, Advertising

“NowSignage continues to advance their software to provide us with functionality that delivers great results. In the past 6-months they have released screen sync for our digital menu boards, weather based content triggers for our window displays and proof-of-play to analyse our content playback. We look forward to using all of these features as we continue to roll-out more UK locations.”

INTRODUCING BLUESCAPE

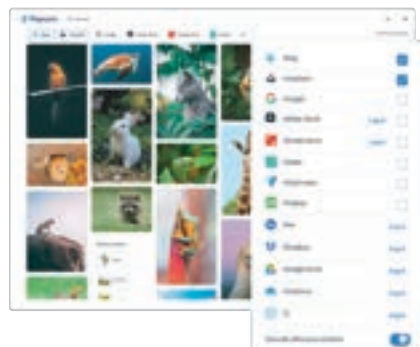
A CREATIVE CANVAS TO FIND, SHAPE, AND SHARE YOUR VISION

Bluescape is a visual collaboration solution for creative teams to brainstorm, present, and review content. Whiteboard, share documents and media, and meet in secure, virtual workspaces where you can bring everything together from anywhere. Make instant comparisons and decisions about projects and be more productive, innovative, and efficient, no matter where you need to be.

The Total Economic Impact™ of Bluescape

Findings from a commissioned study conducted by Forrester Consulting on behalf of Bluescape revealed that a composite organization comprised of customers with experience using Bluescape realized:

- 60% reduction in time spent searching for documents
- 20% reduction in project timelines
- 15% increase in meeting efficiency



WHY CHOOSE BLUESCAPE?

For a creative team, there's nothing more painful than searching for an idea and nothing more joyful than inviting the world to discover it. Bluescape provides a complete suite of tools to help teams bring their biggest ideas to life. From finding inspiration to establishing a mood and aligning on a direction, you have a one-stop-shop to deliver the right content, to the right people, at the right time.

Happy Searching

Find that perfect image faster. Bluescape features Popsync, an image metasearch capability to search stock photo libraries, cloud storage solutions, and your digital asset management systems—all at the same time, all with one search.

No Assembly Required

Contain the chaos of organizing your files for meetings and reviews. Templates and curation tools make it easy to order and arrange your content. Make inspiration boards, presentation boards, and more—no printing, no powerpointing, no hassles.

Share The Joy

Invite others and gather in a secure setting purpose-built for collaboration. Upload additional documents and media, present work, add emoji reactions, mark up files, and leave notes and comments. Everything you need is all in one place.

TAKE THE EXPRESS TRAIN TO “AHA!”

When you can instantly recall assets during meetings, you can make faster decisions and immediately rally your team around a shared creative vision—no need for more meetings, emails, and messages. The team can start executing right away with more confidence and fewer follow-ups.

- Prepare creative reviews in seconds instead of hours
- Accelerate creative workflows by reducing the time wasted searching for and distributing assets
- Reduce rework and waste from ambiguous or insufficient direction or feedback
- Increase the productivity of remote and hybrid teams by providing a single, secure location to find, collect, and share content

BLUESCAPE FEATURES

You need more than sticky notes and a pen to inspire, illustrate, present, approve, and bring an idea to life. You need content and a secure space to share, meet, and reference your work, no matter where you are and where your work is stored. We provide teams with a virtual space of their own and the tools they need to accelerate decision making and time to market.

POPSYNC

Search multiple content libraries, including Adobe Experience Manager Assets; cloud storage solutions including Box, Dropbox, and Google Drive; and stock photo providers like Getty Images, Adobe Stock, and Shutterstock, all at the same time.

VIRTUAL WORKSPACES

Store, find, organize, create, and share content to discuss and collaborate with others.

CONTENT SHARING

Upload content or add links from your favorite apps, including Office 365 and Google Docs. Share presentations, documents, graphics, photos, and videos and make them accessible to your whole team.

VISUAL ORGANIZATION

Assemble and arrange content and activities with canvases and workspace templates.

COLLABORATION

Capture thoughts and reactions by drawing on the workspace or directly on the content. Use emojis and @mention colleagues to share feedback or alert them of tasks or new information.

MEETINGS

Schedule or launch instant video meetings in your workspace or use Bluescape in tandem with Cisco Webex or Microsoft Teams through our integrations.

WHITEBOARDING

Capture ideas, visualize concepts, and plan projects with drawing and diagramming tools, sticky notes, and templates.

DEPLOYMENT OPTIONS

Deploy via the cloud or on-premises to give you the flexibility and security you need.

API

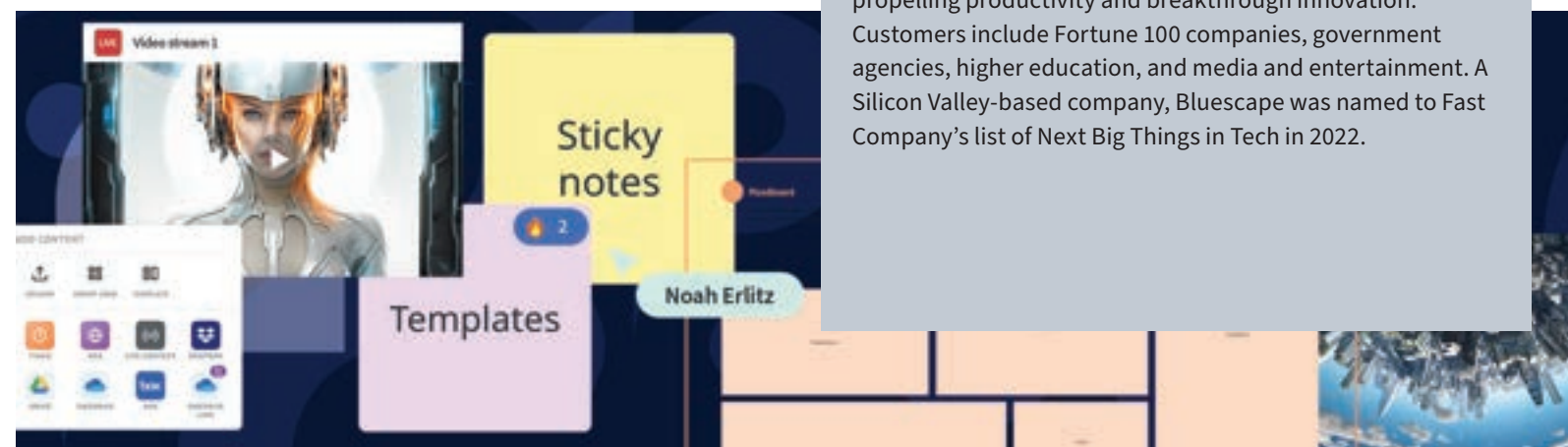
Integrate third-party software and streamline workflows through our extensible API.

SECURITY

Bluescape is the most advanced, FedRAMP-authorized, visual collaboration solution available today. The intelligence community, federal agencies, and leaders in media and entertainment all trust Bluescape with their most sensitive content and data.

ABOUT BLUESCAPE

Bluescape is the visual platform for high-value collaboration. We bring teams and their work together in one place to overcome information silos and communication barriers, propelling productivity and breakthrough innovation. Customers include Fortune 100 companies, government agencies, higher education, and media and entertainment. A Silicon Valley-based company, Bluescape was named to Fast Company's list of Next Big Things in Tech in 2022.



The best support for your AV & IT

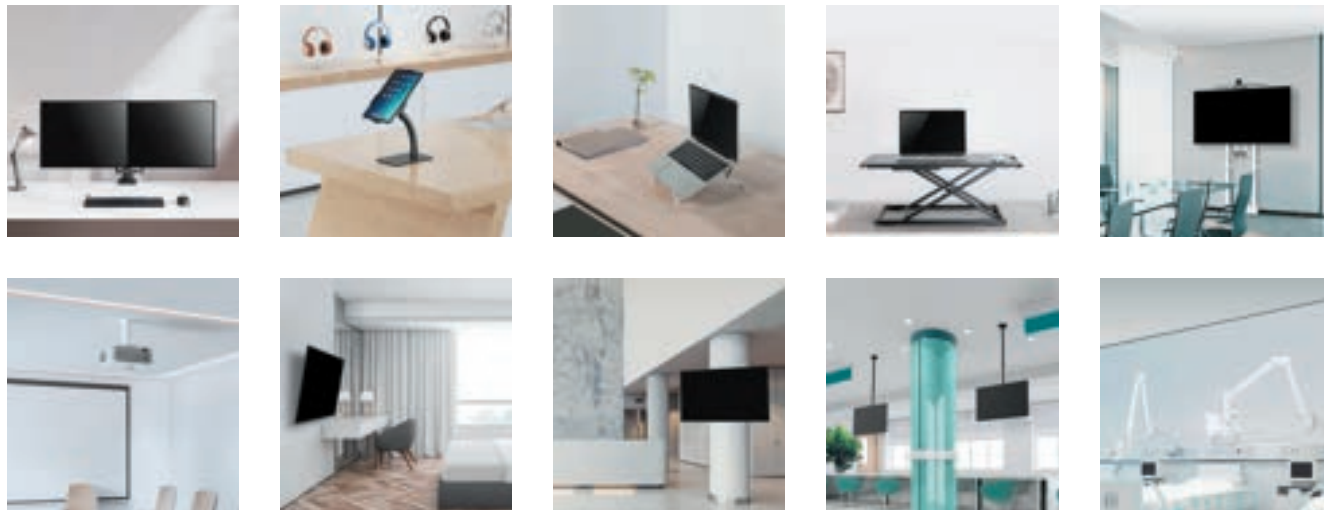


Neomounts offers the most comprehensive, up-to-date assortment of high-quality mounting solutions, according to the latest trends in the AV and IT market.

The products in the Neomounts range are designed with an eye for detail quality, value for money and ease of installation. A 5-year warranty is given on all products as standard.

Founded in 1996 and active in more than 30 countries worldwide, the Neomounts range is readily available. Our mission is that you always experience the best viewing and working position, resulting in optimal posture and maximum comfort whilst using your screen.

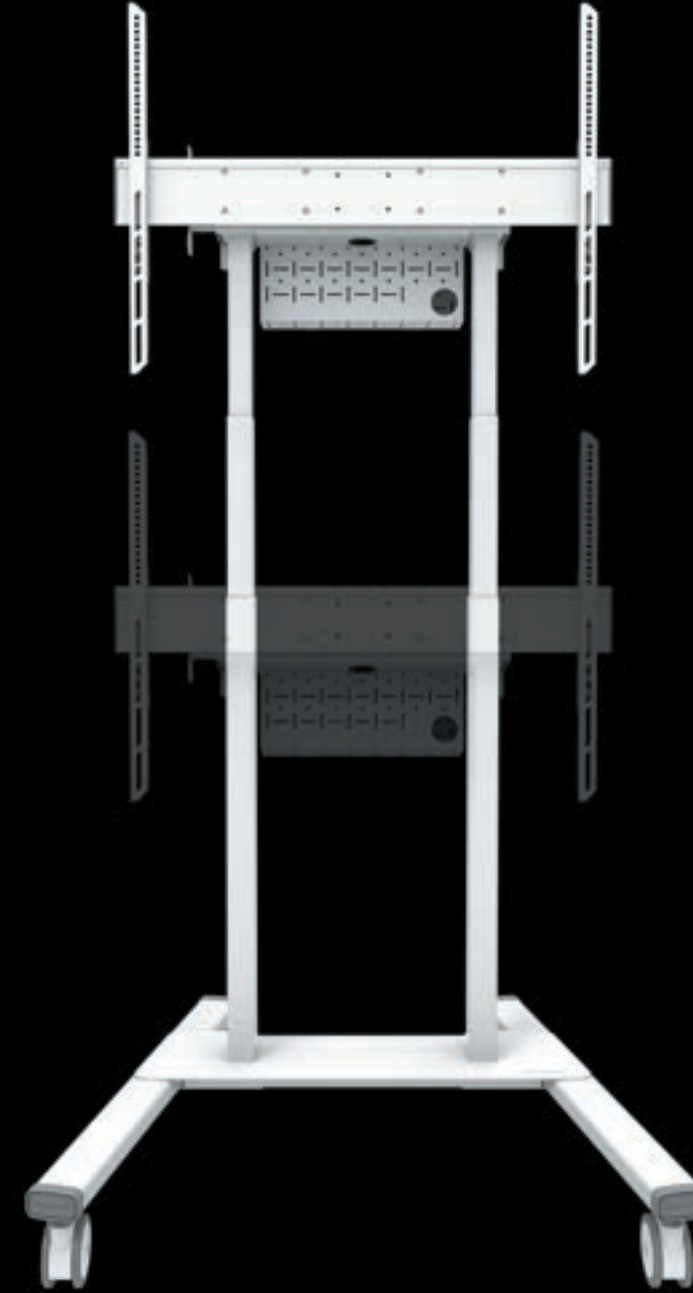
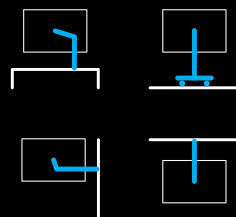
With over 25 years of experience, Neomounts offers the best mounting solutions for you.



Neomounts products:

Also available in **pCon**

- Extensive range for all mounting requirements
- High quality & exquisite design
- Affordability
- High margins, sales & project support
- Demo unit options
- Fast delivery and 5 year warranty
- Green sheets available



Get the best out of your meetings

- > Maximum comfort
- > Optimal flexibility
- > The best viewing angle
- > Various upgrades available



Dual screen adapter



Videobar kit



Caster brake lock



Floor plate

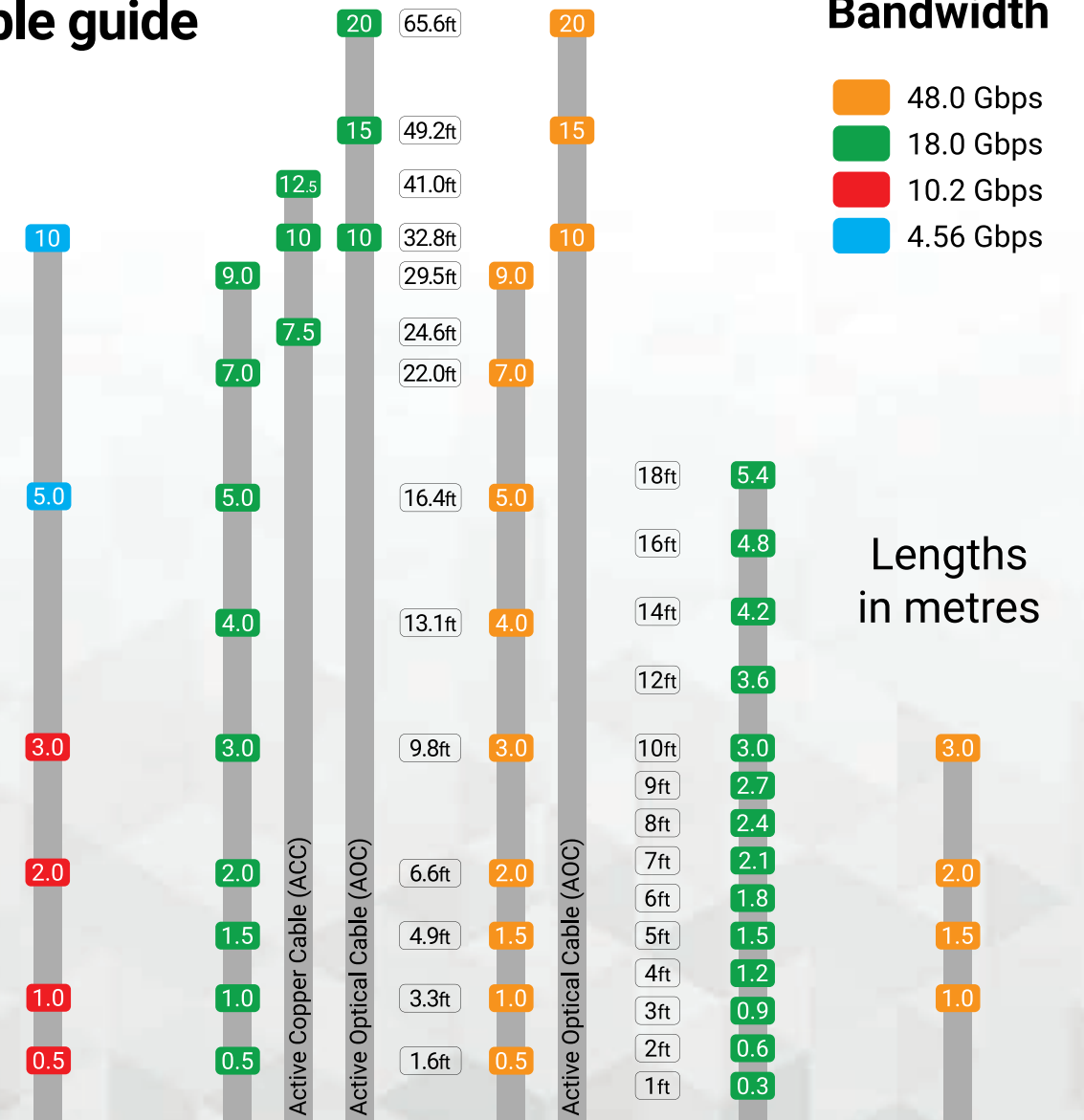
www.neomounts.com

Professional grade cabling products designed for systems technicians

Robust, fast and effective products that deliver optimum installation performance with unmatched ease of use to help you push the boundaries of AV experience.



HDMI Cable guide



ONE PRO³ PRS⁴ R.3 Bravo





AVITOR SHOWROOM & EXPERIENCE CENTRE



In partnership with Haworth – one of the largest Furniture and Design workplace manufacturers, with offices all over the world, their London showroom is based in the prestigious Clerkenwell area

The showroom features a mix of collaborative and individual work spaces to support the variety of ways in which people work, demonstrating the relevant display and uc products to support.



Within the Haworth showroom Avitor feature the key solutions required to complement the environment - from large format display to unified communications - you can experience the full solution.

If you would like to arrange a visit or a meeting at our showroom, please contact us and we can arrange this for you.



PARTNER PRODUCT DEMONSTRATION AND EXPERIENCE CENTRES

In addition to our own London showroom, our partners also offer Experience Centres and Demonstration suites.



LED STUDIO SWINDON

Established in 2010 by Robert Bint, we are the design, sales, installation, and service side of an esteemed global partnership with VOD Visual.

Operating out of 4 global offices, located in the UK with Europe's largest LED showroom, US, Cyprus and Dubai LED Studio are well positioned to assist you with your next large format display project.

Unit 3, Clearwater Business Park, Frankland Rd, Swindon SN5 8YZ

ALLSEE BIRMINGHAM

One of the world's biggest and most established manufacturers that is exclusively dedicated to the commercial display and Digital Signage market.

They offer solutions to meet every commercial display need, from 10" POS displays to colossal 10x10 Video Walls; all screen sizes covered.

Allsee Technologies, 38 Kettles Wood Dr, Birmingham B32 3DB



YEALINK LONDON

A global-leading provider of Unified Communication & Collaboration Solutions specialized in video conferencing. With best-in-class quality, innovative technology, and user-friendly experiences, Yealink is one of the best providers in more than 140 countries and regions, ranks No.1 in the global market share of IP Phone, and is the Top 5 leader in the video conferencing market (Frost & Sullivan, 2021)



NEWLINE LONDON

Truly innovative products help people and organizations find ways to be more successful, more efficient, more collaborative, and find more enjoyment in their work.

BLUESCAPE LONDON

Need a mood board for a new product design or want to level up your storytelling for a presentation? Simply search for an image and get a curated canvas of high-quality images populated in a Bluescape workspace.

Please contact us if you would like to arrange a visit to any of our Partner Experience Centres and we'll be happy to arrange.



SALES PROCESS IN BOTH THE UK & IRISH MARKETS

We can assist with:

- Project specification
- Quotations
- Deal registration for improved pricing
- Ease of supply
- Quick deliveries
- Installation
- European shipment
- Stock File
- High level of customer service



For all your project requirements, contact us and we can assist

+44 (0) 1494 622580
sales@avitor.co.uk

Kingsmead Business Park
High Wycombe, Bucks HP11 1JU

www.avitor.co.uk
www.avitor.ie

+353 (0) 1 912 1330
sales@avitor.ie

Prospect House, 2, Glasnevin, Dublin, D09
K5V2, Ireland

APPLY FOR A TRADE ACCOUNT



To open an account contact sales@avitor.co.uk or sales@avitor.ie or use the link on our website



Reach out to our sales team +44 (0)1494 622580(UK) or +353 (0) 1 912 1330(IE).



We'll process your application quickly and then you're good to go!

DID YOU KNOW WE FEATURE ON



INTRODUCING AVITOR GROUP

It's always good to put names to faces – so let's introduce the team to you!



EAMONN KELLER

Group CEO / Director



JARED HUET

Group CTO / Director

AVITOR UK



SUZANNE TIERNAN

UK CEO

suzanne.Tiernan@avitor.co.uk
+44 (0) 7507 693797



GUY READY

Business Development Manager

Guy.ready@avitor.co.uk
+44 (0) 7984 559451



PAUL MATTHEWS

Head of Sales Ireland

pmatthews@avitor.ie
+353 (0) 86 772 6639



ROISIN FULCHER

Education Technology Specialist

rfulcher@avitor.ie
+353 (0) 86 177 3144



AMY MILES

Account Executive

+44 (0) 7946 120 805
amy.miles@avitor.co.uk



JOSH FRANCIS

Sales Executive

+44 (0) 7498 381020
Josh.francis@avitor.co.uk



EOIN KENNY

Business Development Manager

ekenny@avitor.ie
+3531 (01) 963 8748



CHARLIE GALLEN

Account Manager

cgallen@avitor.ie
+353 (0) 086 058 7728



MATT STONE

LED & Workspace Technology Specialist

mstone@avitor.ie
+353 (0) 87 637 2144



AARON BYRNE

Account Manager

abyrne@avitor.ie
+353 (0) 86 440 0763



PAULA LOPEZ GRAY

Group Operations

plopezgray@avitor.ie



CONTACT US

A large white rectangular area, likely a placeholder for contact information or a form.