



# Ethernet Networking Cable CAT5e

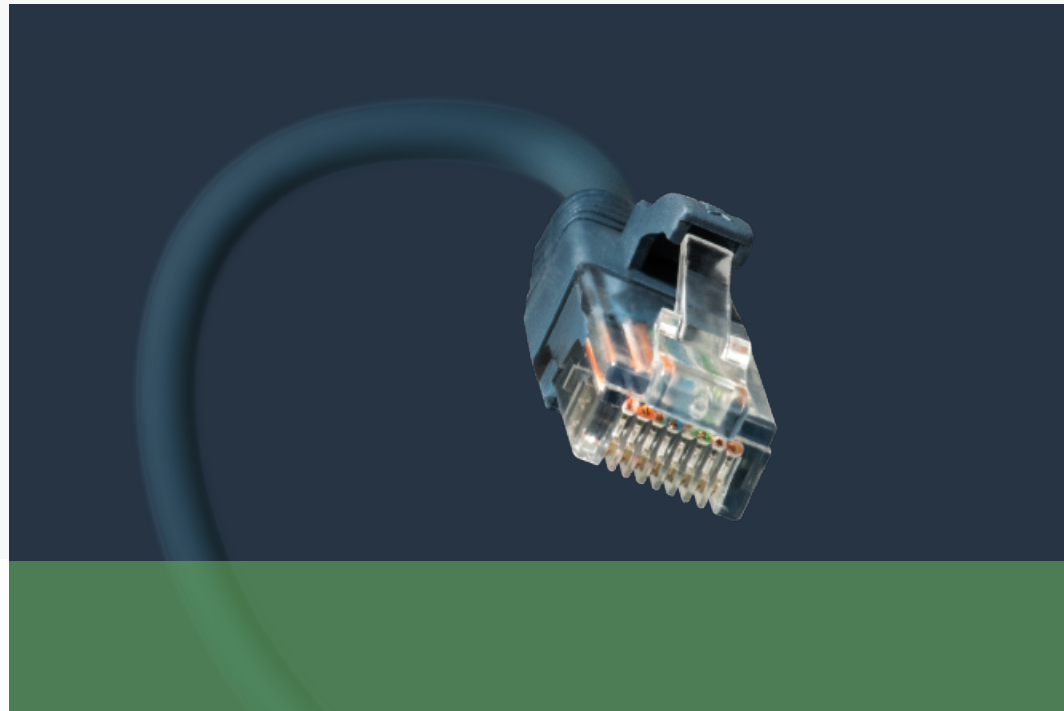
TL-EC505EM (UN) 1.0 TL-EC510EM(UN) 1.0 TL-EC515EM(UN) 1.0 TL-EC530EM(UN) 1.0

## Highlights

---

- Ensure you pick the high quality CAT5 cable
- CAT5e is able to maintain a stable connection
- UL certified
- Copper cable certification achieved
- A networking cable from the world's no.1 provider of WLAN products

# Features



Ensure you pick the high quality CAT5 cable

## Snagless Design - Soft Flex Tab

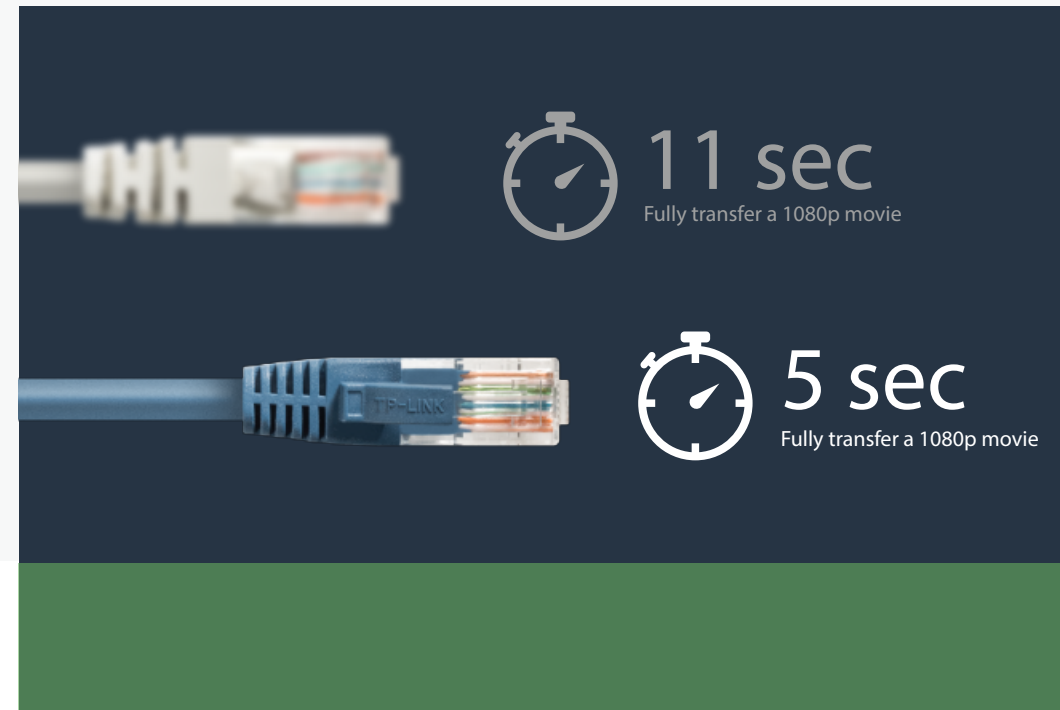
The little boot on the cable can cover the hook on the plug and user can plug in and unplug from devices easily

## Gold-Plated Connector

Effectually prevent electrical corrosion and oxidation

## Durable PVC Cable Jacket

Ultimate protection and abrasion resistance that has been bend-tested and plug tested



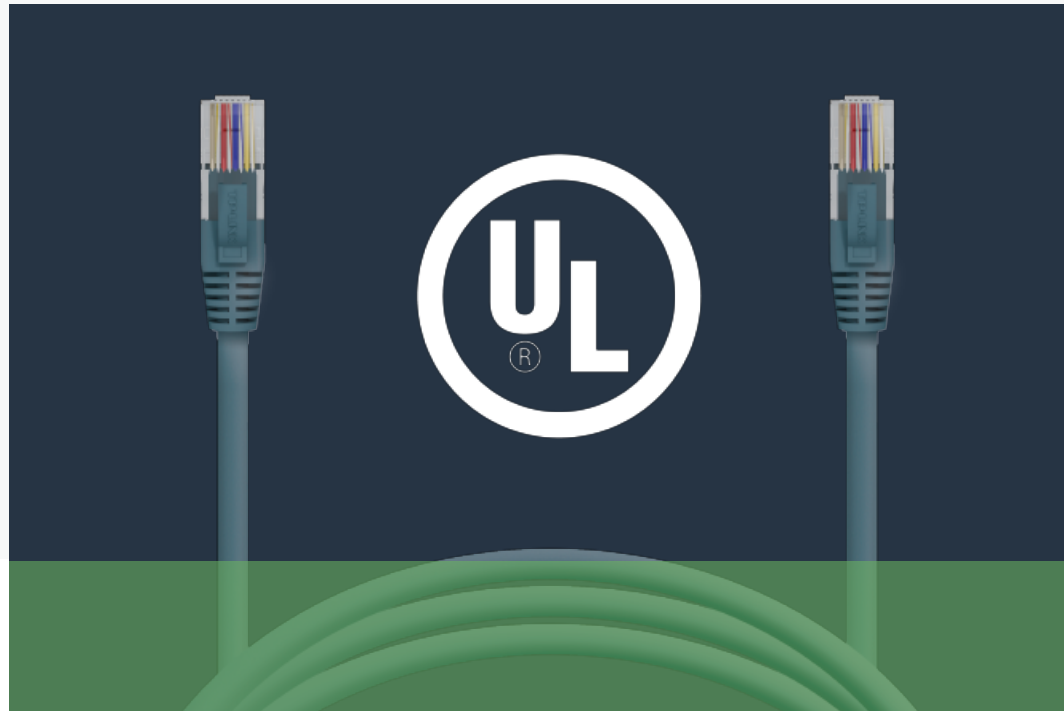
CAT5e is able to maintain a stable connection

2x data transfer speed supports up to 1000mbps

Equipped with pure copper wires, Tp-Link CAT5e cable can transfer a 1080p movie around 5 seconds, whereas it takes around 11 second with other CAT5e cable which equipped with copper plated aluminum wire.\*

\*The actual transmission speed depends on the setting of the device connected.

# Features



## UL certified

Tp-Link CAT5e Cable has also passed the flammability testing process to ensure the cable meet designated flammability requirements and eventually authorizing the cable to conduct the UL mark.



## Copper cable certification achieved

Tp-Link CAT5e Cable has successfully passed series of tests, which included Wiremap Test, Propagation Delay Test, Delay Skew Test, Cable Length Test, Insertion Loss Test, Near-End Crosstalk (NEXT) Test, Power Sum NEXT (PSNEXT) Test, Equal-Level Far-End Crosstalk (ELFEXT) Test, Power Sum ELFEXT (PSELFEXT) Test, Attenuation-to-Crosstalk Ratio (ACR) Test, Power sum ACR (PSACR) Test, DC Loop Resistance Test to ensure high compatibility with any network equipment and ultimately having ANSI/TIA568 mark on the cable jacket.

# Specifications

## Hardware

<b>Model:</b>	TL-EC505EM(UN) 1.0	TL-EC510EM(UN) 1.0	TL-EC515EM(UN) 1.0	TL-EC530EM(UN) 1.0
<b>Dimensions:</b>	0.43x0.23x19.7 in. (11x6X500mm)	0.43x0.23x39.4 in. (11x6X1000mm)	0.43x0.23x59.1 in. (11x6X1500mm)	0.43x0.23x118.1 in. (11x6X3000mm)
<b>Weight:</b>	160g (cable only)	318g (cable only)	478g (cable only)	955g (cable only)

## Others

**Package Contents:** Ethernet Networking Cable

TL-EC505EM(UN) 1.0



For more information, please visit  
<http://WWW.TP-LINK.COM/en/products/details/?model=EC505EM>  
or scan the QR code left

TL-EC510EM(UN) 1.0



For more information, please visit  
<http://WWW.TP-LINK.COM/en/products/details/?model=EC510EM>  
or scan the QR code left

TL-EC515EM(UN) 1.0



For more information, please visit  
<http://WWW.TP-LINK.COM/en/products/details/?model=EC515EM>  
or scan the QR code left

TL-EC530EM(UN) 1.0



For more information, please visit  
<http://WWW.TP-LINK.COM/en/products/details/?model=EC530EM>  
or scan the QR code left

[www.tp-link.com](http://www.tp-link.com)

Specifications are subject to change without notice. TP-LINK is a registered trademark of TP-LINK Technologies CO., Ltd. Other brands and product names are trademarks or registered trademarks of their respective holders. No part of the specifications may be reproduced in any form or by any means or used to make any derivative such as translation, transformation, or adaptation without permission from TP-LINK Technologies CO., Ltd.