

PHAROS

2.4GHz 10dBi 2x2 MIMO Omni Antenna

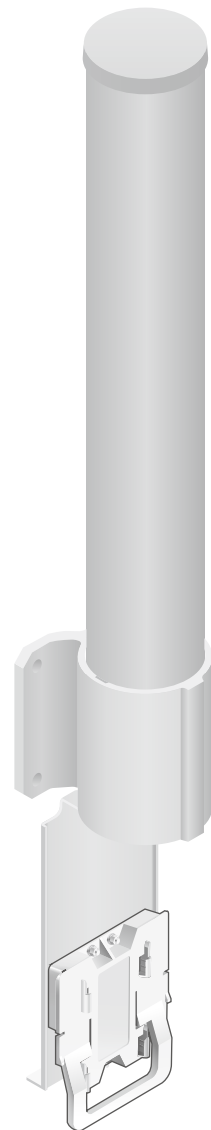
MODEL: TL-ANT2410MO Datasheet

Highlights

- High gain omni-directional operation, wide coverage, ideal for Point to Multipoint connections and hotspot coverage.
- Ease installation, seamlessly integrated with the Pharos Base Station WBS210
- MIMO technology for higher throughput
- Weatherproof design provides protection in harsh environments

Description

The TL-ANT2410MO is a 2x2 MIMO omni antenna that is ideal for outdoor use along with Pharos base station WBS210. This antenna, which features high-gain omni-directional transmission pattern, is excellent for building long distance Point-to-Multipoint connections and nearby hotspot coverage.



Scenarios/Topology

A TL-ANT2410MO, installed with a Pharos base station WBS210, is ideal for large area Point-to-Multipoint data transmission or hotspot coverage.

Point-to-Multipoint Coverage

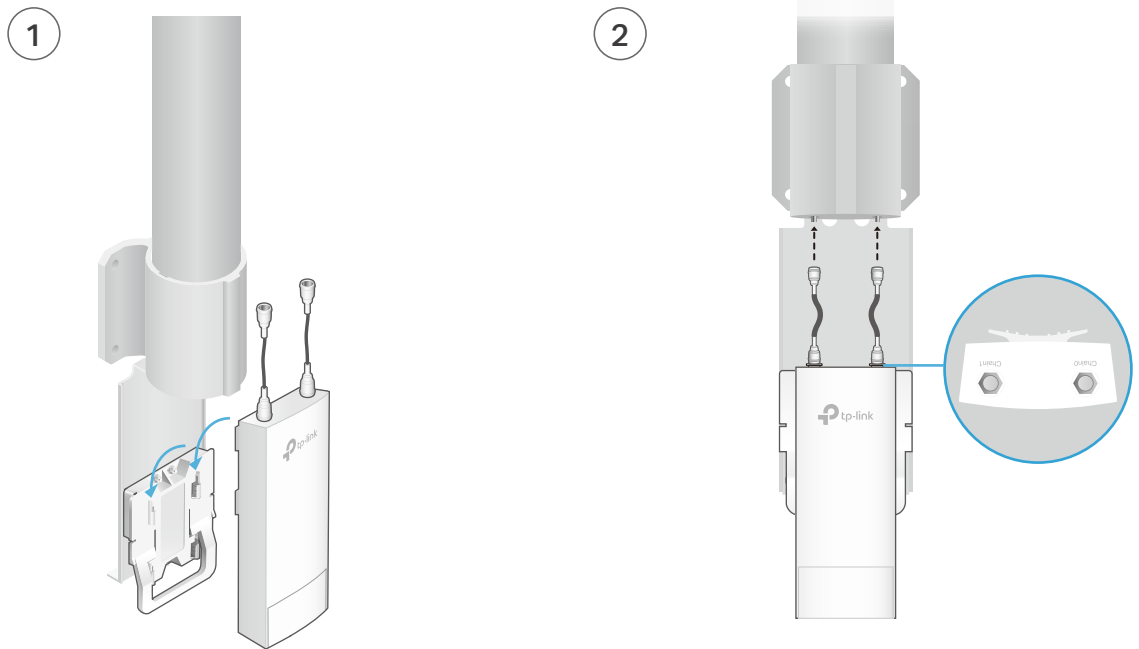


Hotspot Coverage



Easy Installation

Designed with a built-in mount, TP-Link omni antenna (TL-ANT2410MO) works seamlessly with Pharos base station WBS210 and no tools are required for installation.



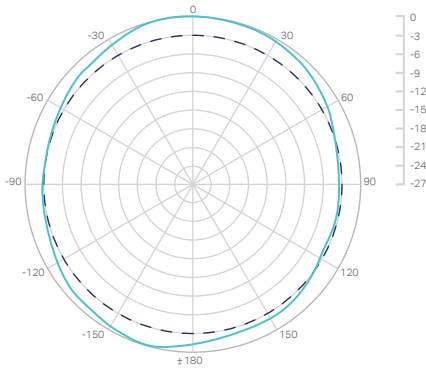
Specifications

	TL-ANT2410MO
Frequency Range	2.35-2.55GHz
Gain*	10dBi
VSWR	≤1.85
Azimuth Beamwidth	360°
Elevation Beamwidth	13°
Electrical Downtilt	4°
Cross-pol Isolation	≥30dBi
Impedance	50Ω
Interfaces	2*RP-SMA Female
Polarization	Horizontal & Vertical
Survival Wind Speed	241km/h
Standards	RoHS, WEEE

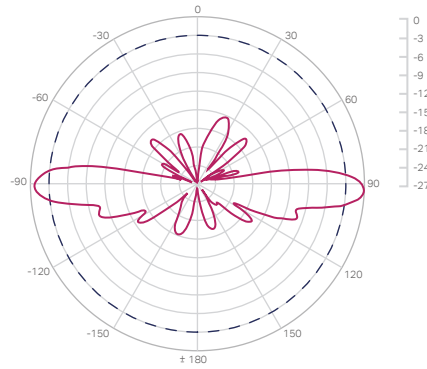
*Exclude Cable Loss

Radiation Patterns

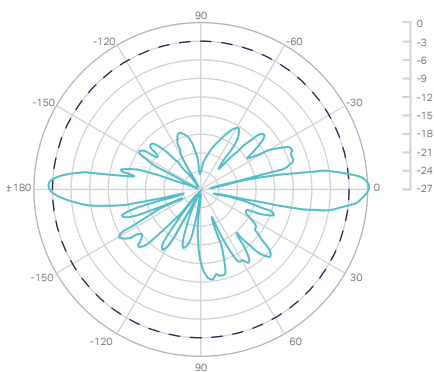
HPOL Azimuth



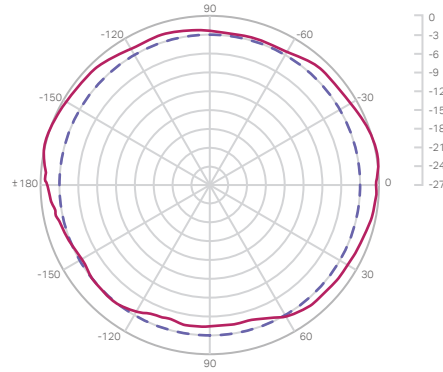
HPOL Elevation



VPOL Azimuth



VPOL Elevation



Ordering Information

Ideal to use with



- 2.4GHz 300Mbps Outdoor Wireless Base Station WBS210

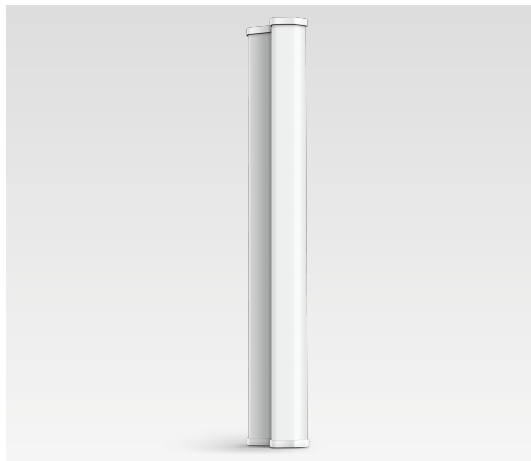
Related Products



- 2.4GHz 300Mbps 9dBi/12dBi
Outdoor CPE
CPE210/CPE220



- 5G/2.4GHz 2x2 MIMO
Dish Antenna
TL-ANT5830MD/TL-ANT2424MD



- 5G/2.4GHz 2x2 MIMO
Sector Antenna
TL-ANT5819MS/TL-ANT2415MS