

Auranet CAP Series Access Points					
Product Picture					
Model	CAP2200	CAP1750	CAP1200	CAP300	CAP300-Outdoor
Product Description	AC2200 Wireless Tri-Band MU-MIMO Ceiling Mount Access Point	AC1750 Wireless Dual Band Gigabit Access Point	AC1200 Wireless Dual Band Gigabit Access Point	300Mbps Wireless N Access Point	300Mbps Wireless N Outdoor Access Point
Main Design	Wireless Frequency	2.4GHz and 5GHz			2.4GHz
	Compatibility	IEEE802.11a/b/g/n/ac			IEEE 802.11b/g/n
	Maximum Data Rate	Up to 400Mbps(2.4GHz)+867 Mbps(5GHz)	Up to 450Mbps(2.4GHz)+1300 Mbps(5GHz)	Up to 300Mbps(2.4GHz)+867 Mbps(5GHz)	Up to 300 Mbps
	Antennas	N/A	2.4GHz: 3*4dBi 5GHz: 3*4dBi	2.4GHz: 2*4dBi 5GHz: 2*4dBi	2*5dBi (External)
	Ethernet Ports	Gigabit Ethernet Port*2	Gigabit Ethernet Port*1		10/100Mbps Ethernet Port*1
Centralized Management	Power over Ethernet (PoE)	IEEE 802.3at		IEEE 802.3af	
	Wireless Controller				
Security	Captive Portal Authentication				
	Wireless MAC Address Filtering				
	Wireless Isolation between Clients				
	SSID to VLAN Mapping				
	802.1X Support				
Wireless Function	Encryption	WEP, WPA/WPA2-PSK, WPA/WPA2-Enterprise			
	Fast Roaming				
	Multiple SSIDs	16 (8 on each radio)			8
	Automatic Channel Assignment				
	Transmit Power Control		Adjust Transmit Power on dBm		
Management	Band Steering				
	Load Balance				
	Wireless Schedule				
	Reboot Schedule				
	LED ON/OFF Control				
Hardware	Power Supply	PoE or external 12VDC/2.5A power supply	PoE or external 12VDC/1.5A power supply	PoE or external 12VDC/1A power supply	IEEE 802.3af PoE
	Physical Security Lock		Kensington Lock Slot		
	Button		Fit/Fat Switch, Reset Button		
	Watch Dog				
	Certification		CE, FCC, RoHS		
Mounting		Ceiling/Wall mounting (Kits included)		Pole/Wall Mounting (Kits included)	
Dimensions (W x D x H)	8.7 x 7.6 x 1.4 in. (220.5 x 193.5 x 36.5 mm)	7.1 x 7.1 x 1.9 in. (180 x 180 x 47.5 mm)		8.2 x 3.7 x 1.7 in. (209 x 95 x 42.6 mm)	
System Requirements	Microsoft Windows XP, Vista, Windows 7, Windows 8, Windows 10				
Environment	Operating Temperature: 0°C~40°C (32°F~104°F), Storage Temperature: -40°C~70°C (-40°F~158°F), Operating Humidity: 10%~90% non-condensing, Storage Humidity: 5%~90% non-condensing				

802.11n Auranet EAP Series Access Points					
Product Picture					
Model	EAP115	EAP110	EAP115-Wall	EAP110-Outdoor	
Product Description	300Mbps Wireless N Access Point	300Mbps Wireless N Access Point	300Mbps Wireless N Wall-Plate Access Point	300Mbps Wireless N Outdoor Access Point	
Main Design	Wireless Frequency	2.4GHz			
	Compatibility	IEEE 802.11b/g/n			
	Maximum Data Rate	Up to 300Mbps			
	Antennas	2*3dBi		2*1.8dBi	2*5dBi (External)
	Transmit power	CE: <20dBm FCC: <26dBm		CE: <15dBm	CE: <20dBm FCC: <27dBm
Centralized Management	Ethernet Ports	10/100Mbps Ethernet Port *1		10/100Mbps Ethernet Port *2	
	Power over Ethernet (PoE)	IEEE 802.3af	24V Passive PoE	IEEE 802.3af	24V Passive PoE
	Cluster				
	Max APs in One Cluster	24			
	EAP Controller Software				
Security	Captive Portal Authentication				
	Access Control				
	Wireless MAC Address Filtering				
	Wireless Isolation between Clients				
	SSID to VLAN Mapping				
Wireless Function	Rogue AP Detection				
	802.1X Support				
	Encryption	WEP, WPA/WPA2-PSK, WPA/WPA2-Enterprise			
	Multiple SSIDs	8			
	Automatic Channel Assignment				
Management	Transmit Power Control	Adjust Transmit Power on dBm			
	QoS(WMM)				
	Load Balance				
	Reboot Schedule				
	Wireless Schedule				
Hardware	LED ON/OFF Control				
	Management MAC Access Control				
	Web-Based Management				
	Telnet				
	SNMP		v1,v2c		
Power Supply	PoE or External 12VDC / 1A Power Supply	24V Passive PoE Power Supply	IEEE 802.3af PoE	24V Passive PoE Power Supply	
Max Power Consumption	5 watts	6.55 watts	2.8 watts	6.3 watts	
Physical Security Lock	Kensington Lock Slot				
Button				Reset Button	
Watch Dog					
Certification	CE, FCC, RoHS				
Mounting	Ceiling /Wall mounting (Kits included)		Wall Plate Mounting	Pole/Wall Mounting (Kits included)	
Dimensions (W x D x H)	7.1 x 7.1 x 1.9 in. (180 x 180 x 47.5 mm)		3.4 x 3.4 x 1.2 in. (86.8 x 86.8 x 30.2 mm)	8.2 x 3.7 x 1.7 in. (209 x 95 x 42.6 mm)	
System Requirements	Microsoft Windows XP, Vista, Windows 7, Windows 8, Windows 10				
Environment	Operating Temperature: 0°C~40°C (32°F~104°F), Storage Temperature: -40°C~70°C (-40°F~158°F), Operating Humidity: 10%~90% non-condensing, Storage Humidity: 5%~90% non-condensing				



802.11ac Auranet EAP Series Access Points					
Product Picture					
Model	EAP330	EAP320	EAP245	EAP225	
Product Description	AC1900 Wireless Dual Band Gigabit Access Point	AC1200 Wireless Dual Band Gigabit Access Point	AC1750 Wireless Dual Band Gigabit Access Point	AC1200 Wireless Dual Band Gigabit Access Point	
Main Design	Wireless Frequency	2.4GHz and 5GHz			
	Compatibility	IEEE802.11a/b/g/n/ac			
	Maximum Data Rate	Up to 600Mbps(2.4GHz)+1300 Mbps(5GHz)	Up to 300Mbps(2.4GHz)+867 Mbps(5GHz)	Up to 450Mbps(2.4GHz)+1300 Mbps(5GHz)	Up to 300Mbps(2.4GHz)+867 Mbps(5GHz)
	Internal Antennas	2.4GHz: 3*5dBi 5GHz: 3*7dBi	2.4GHz: 2*5dBi 5GHz: 2*6dBi	2.4GHz: 3*4dBi 5GHz: 2*4dBi	2.4GHz: 2*4dBi 5GHz: 2*4dBi
	Transmit power	CE: <20dBm(2.4GHz), <23dBm(5GHz) FCC: <27dBm			
Centralized Management	Ethernet Ports	Gigabit Ethernet(RJ-45)Port*2	Gigabit Ethernet(RJ-45) Port*1		
	Power over Ethernet (PoE)	IEEE 802.3at		IEEE 802.3af	
	Cluster				
	Captive Portal Authentication				
	Access Control				
Security	Wireless MAC Address Filtering				
	Wireless Isolation between Clients				
	SSID to VLAN Mapping				
	Rogue AP Detection				
	802.1X Support				
Wireless Function	Encryption	WEP, WPA/WPA2-PSK, WPA/WPA2-Enterprise			
	Multiple SSIDs	16 (8 on each radio)			
	Automatic Channel Assignment				
	Transmit Power Control	Adjust Transmit Power on dBm			
	QoS(WMM)				
Management	Load Balance				
	Rate Limit				
	Reboot Schedule				
	Wireless Schedule				
	Management MAC Access Control				
Hardware	Web-Based Management				
	Telnet				
	SNMP		v1, v2c		
	System Logging		Local/Remote Syslog		
	Email Alerts				
Power Supply	PoE or external 12VDC/2.5A power supply		PoE or external 12VDC/1.5A power supply		
Max Power Consumption	14 watts	13 watts	12.7 watts	10.15 watts	
Physical Security Lock	Kensington Lock Slot				
Button				Reset Button	
Watch Dog					
Certification	CE, FCC, RoHS				
Mounting	Ceiling /Wall mounting (Kits included)				
Dimensions (W x D x H)	8.7 x 7.6 x 1.4 in. (220.5 x 193.5 x 36.5 mm)		7.1 x 7.1 x 1.9 in. (180 x 180 x 47.5 mm)		
System Requirements	Microsoft Windows XP, Vista, Windows 7, Windows 8, Windows 10				
Environment	Operating Temperature: 0°C~40°C (32°F~104°F), Storage Temperature: -40°C~70°C (-40°F~158°F), Operating Humidity: 10%~90% non-condensing, Storage Humidity: 5%~90% non-condensing				

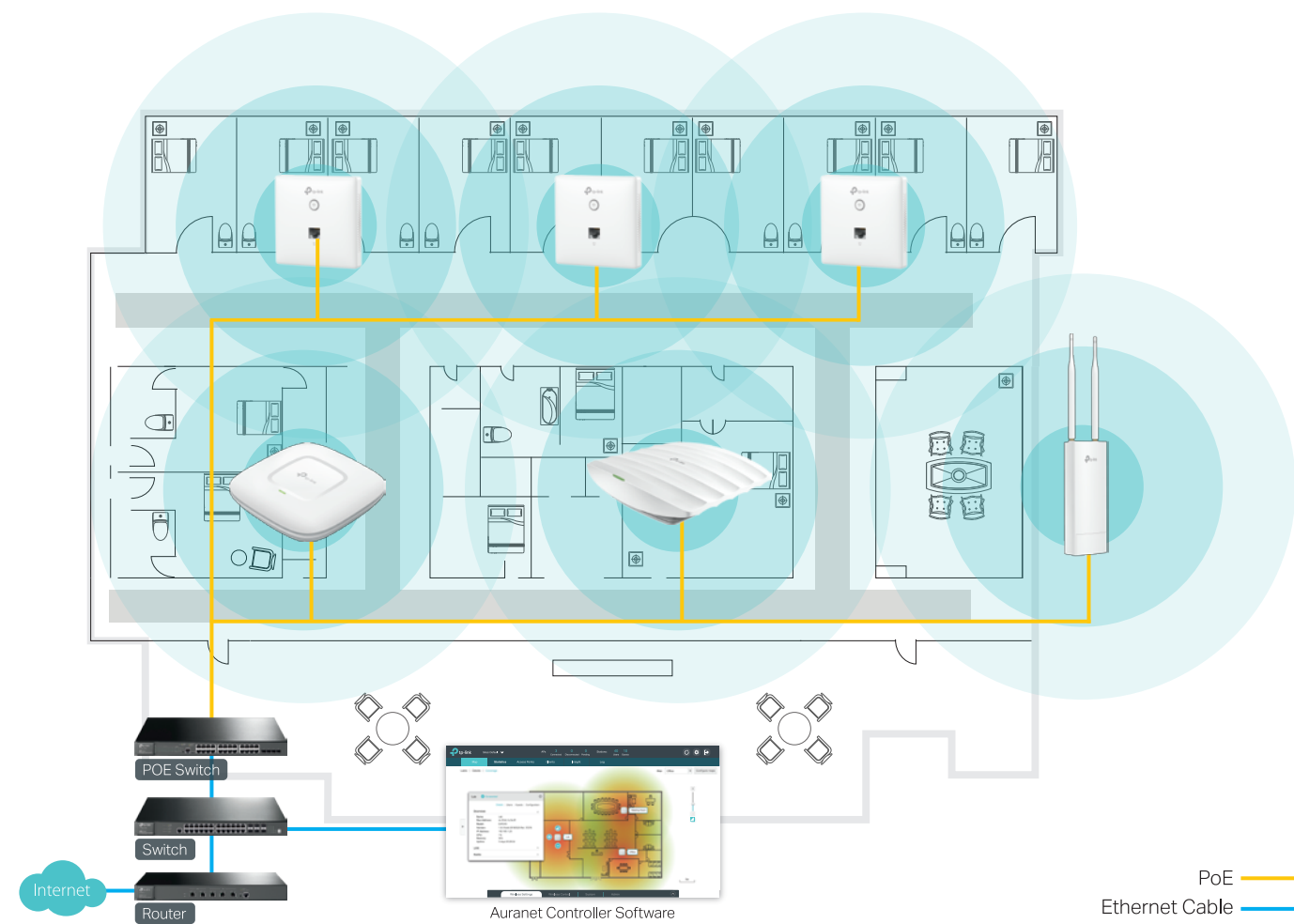


## Auranet Business Wi-Fi Solutions

### EAP Series and CAP Series

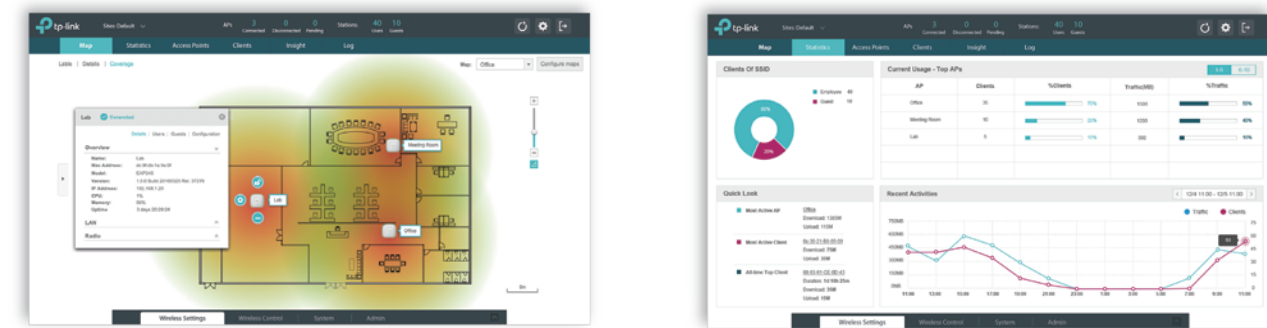


## EAP Series Business Wi-Fi Solution



## Auranet Controller Software for EAP Series

TP-Link's free Auranet Controller Software allows users to conveniently manage hundreds of TP-Link Auranet EAPs spread across multiple sites all from a single location.



### Convenient and Effective Management

- Free to use, no expensive hardware controller required
- Easy-to-use, no special training necessary
- Scalable Management, allowing for hundreds of Auranet APs under one centralized controller
- Regardless of geography, managing Auranet APs in multiple sites from a central location

### Real-time Status Monitoring

- Visual statistic analytics showing overall network usage and traffic distribution
- Instantly view data traffic and client connections for any individual Auranet AP
- Easily monitor the activity of each respective clients
- Effectively provides comprehensive client connection logs and detects rogue APs

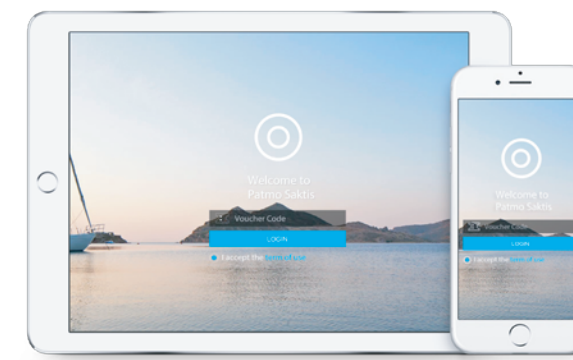
## Manage Multiple Sites with the Centralized Controller in a Single Location

TP-Link's Auranet Controller enables the network administrator to monitor and manage hundreds of EAPs of multiple sites from any connected PC within the network. This function allows for great wireless scalability and remote network management, saving time and no extra IT staff fee, ideal for multiple distributed deployments such as hotel chain, business with distributed offices.



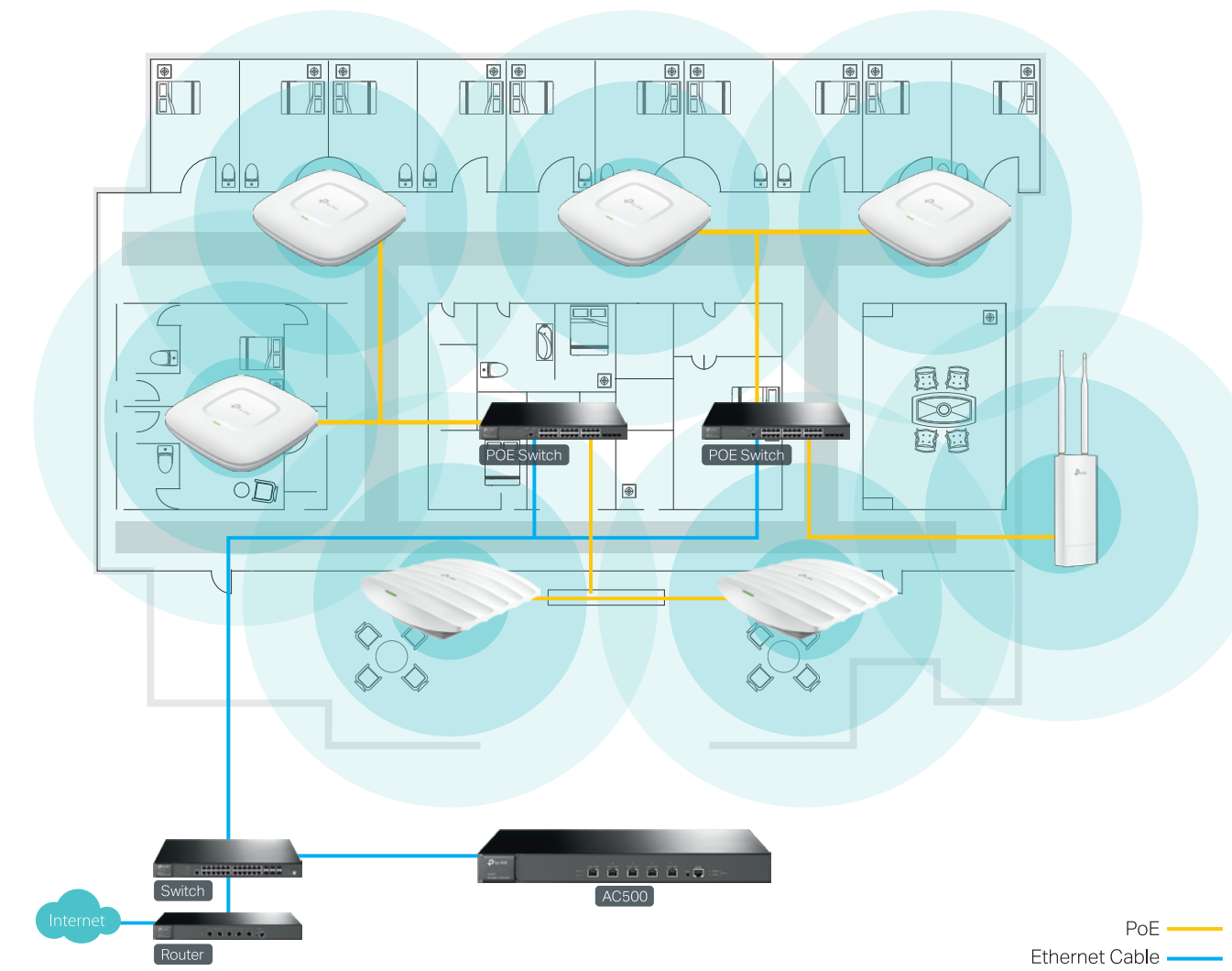
## Powerful Guest Authentication – Captive Portal

The powerful Guest Authentication functionality makes it easy to customize Guest Wi-Fi settings. Administrators will be able to control guest access by designing a unique authentication page and establishing a voucher system to limit the duration of use for each client. Guest Authentication also supports the creation of Operator accounts, which have permission to manage the guest network without having access to other administrative features.



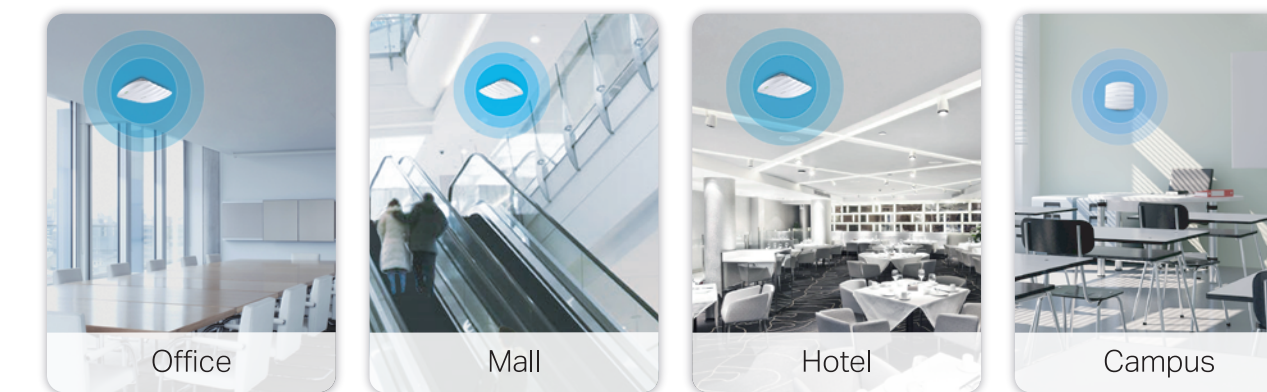
- L3 Management
- Load Balance
- Band Steering
- Rate Limit
- Reboot Schedule
- Batch Upgrade

## CAP Series Business Wi-Fi Solution



## Ideal for Scenarios

TP-Link's Auranet Wireless Controller is a centralized management platform that can perfectly fit small and medium-sized business applications such as offices, malls, hotels and campuses.



## Auranet Wireless Controller for CAP Series

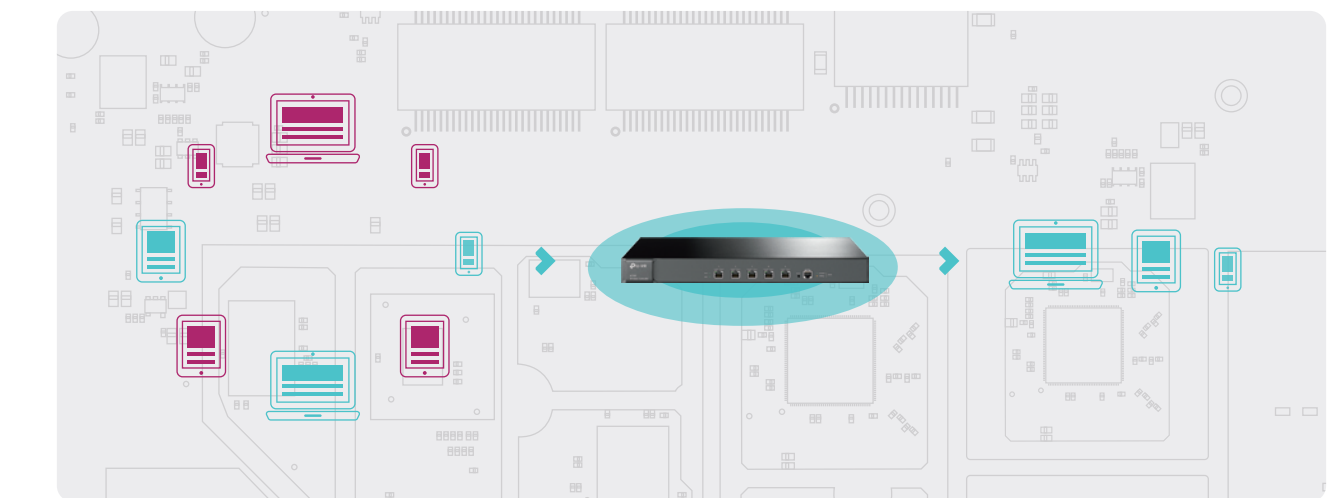
### Easy and Scalable Business Wi-Fi Management

Independent from any server or computer, Auranet Wireless Controller can automatically discover and centrally configure devices in your network. The controllers come in different scales, providing an easy and scalable choice for business networks.



### Stable and Secure Network Administration

The dedicated hardware design of the Auranet Wireless Controller ensures network stability in a self-contained system. Combined with standard CAPWAP protocol and various methods of authentication, it is ideal for businesses that require security and strength.



### AC500 Wireless Controller AC500

- Manage up to 500 CAPs
- 1GHz Dual-core MIPS64 network dedicated processor
- 650MHz Network dedicated processor
- 5 Gigabit Ethernet ports
- Automatically discover APs and configure all APs from one access controller with Unified configuration.



### AC50 Wireless Controller AC50

- Manage up to 50 CAPs
- 650MHz Network dedicated processor
- 5 10/100Mbps Ethernet ports
- Automatically discover APs and configure all APs from one access controller with Unified configuration.