

Protection of Vehicle Diagnosis (PVD)

Vehicles Affected

Models	Model Year	Model Type	VIN Range	Vehicle-Specific Equipment
Cayenne (E3-I)	2023	9YA, 9YB	N/A	N/A
Cayenne (E3-II)	As of 2024	9YA, 9YB	N/A	N/A
Panamera (G2-II)	As of 2023	971	N/A	N/A
911 (992-I)	As of 2023	992	N/A	N/A
Taycan (J1-I)	As of 2023	Y1A, Y1B, Y1C	N/A	N/A

Revision History

Revision	Release Date	Changes
0	October 16, 2023	Original document

Service Information

New Diagnosis functions introduced as of Model Year 2023 include "Protection of Vehicle Diagnostics" (PVD). In some places this may be displayed in German language as, "Schutz Fahrzeug Diagnose" (SFD). Porsche Service Centers will find new PIWIS Tester functions, informational messages, and error messages pertaining to PVD when working on the affected vehicles.

Affected vehicle control units (for example, the Gateway control unit or the DME control unit) may also store an active fault code **B184C00, "Activation activated"** as a normal function of PVD. These faults are for informational purposes and typically do not require diagnosis.

Overview	Extended identifications	Fault memory	Actual values input signals	Drive links checks	Maintenance repairs	Coding programming
Control unit	Status	Fault code	Description			
Gateway 3.1 (003)		B184C00	Activation activated			
DME V6 TFSI (ULEV/C6b)		B184C00	Activation activated			

Figure 1

Technical Background

To perform certain diagnostic functions such as drive links, or to perform certain actions such as coding or programming, relevant user, system, and vehicle information must be exchanged between the vehicle and the backend (server-side) of the PVD system.

The process generally takes place as follows (see Figure 2)

1. Function activation request sent by tester to control unit
2. Control unit reports back confirmation of request
3. Request is sent to PVD backend system
4. User permissions are checked then an access token is sent back
5. Tester and ECU confirm the control unit is unlocked for 90 minutes

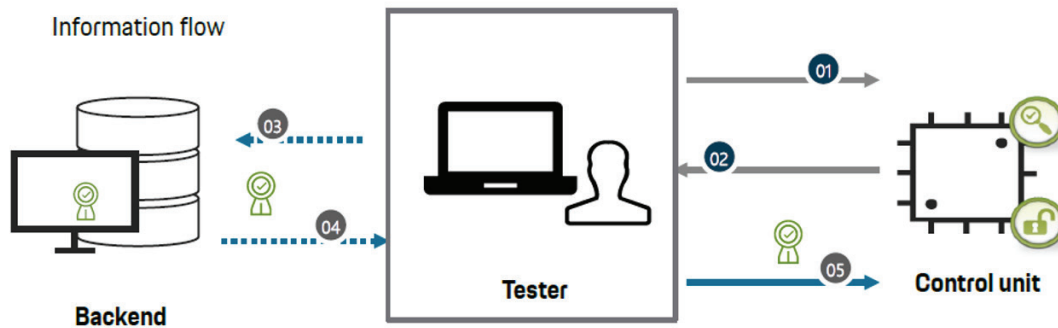


Figure 2

Service Information

*Ensure the diagnostic tester has an active internet and backend connection.

Upon start of diagnostic functions for the affected vehicles, the diagnostic tester will present a message related to PVD and instruct the technician to confirm activation of PVD. This is typically done by opening the front lid of the vehicle (front trunk or front engine compartment) to confirm the technician is at the vehicle and takes responsibility for further actions on the vehicle.

To **activate** control units and allow PVD-secured diagnostic functions:

1. Open the Additional Menu [F7]
2. Select Protection of vehicle diagnostics
3. Activate control units
4. Select which control unit(s) need activation of protected functions
5. The technician login is verified. It may be necessary to log in to PPN again at this time
6. After selection is made and pressing "Next", a 'Protection of vehicle diagnostics' window will open
7. Click on each control unit one by one
8. Requested control units are now activated to allow protected functions

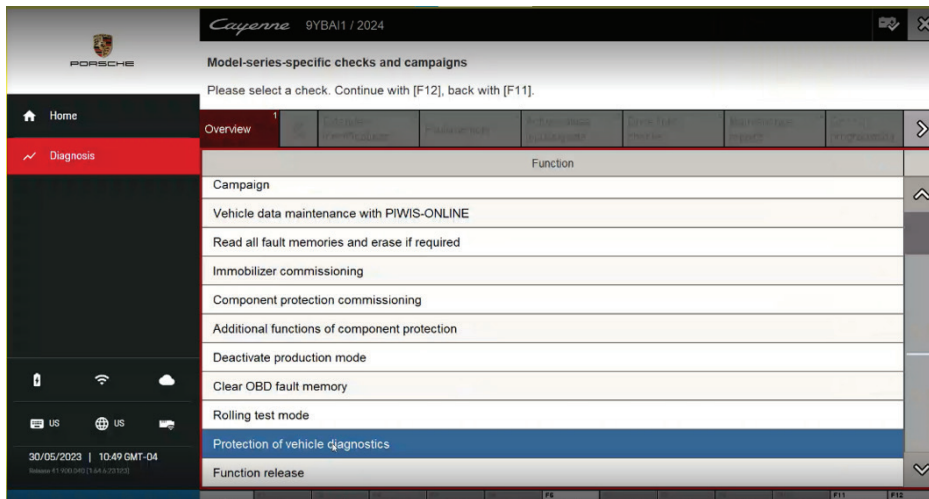
To **lock** the control units and deactivate PVD-secured diagnostic functions:

1. Open the Additional Menu [F7]
2. Select Protection of vehicle diagnostics
3. Review informational message on the tester
4. Select "Locking all control units" and follow tester prompts

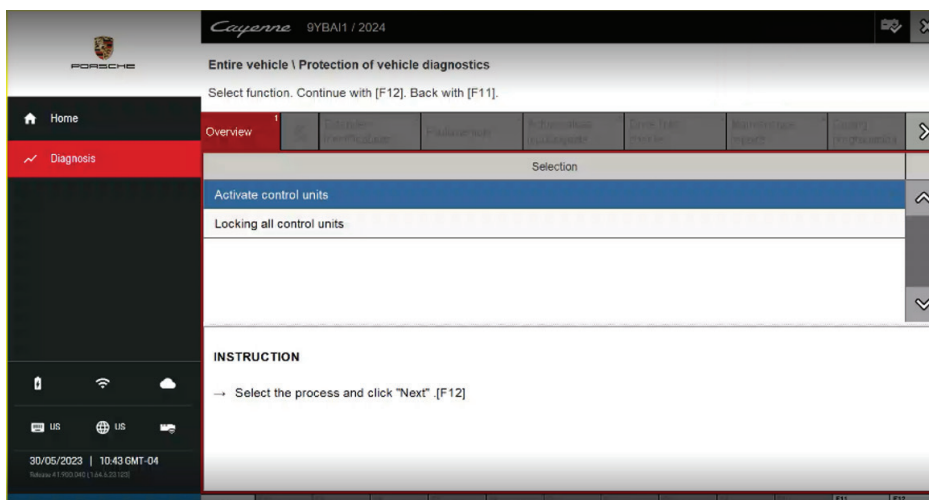
Example: Control unit activation on 2024 Cayenne

To **Activate** control units:

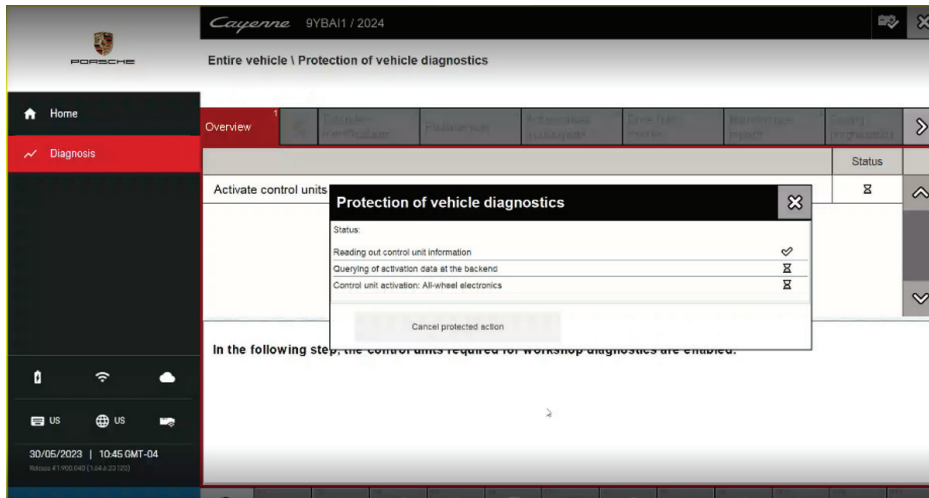
1. Go to Protection of vehicle diagnostics



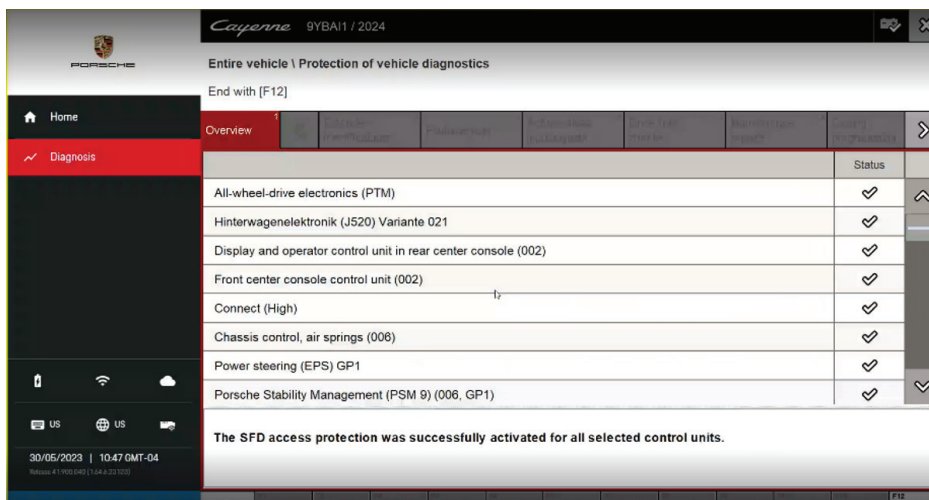
2. Click 'Activate control units'



3. Click 'Activate control unit selection' or 'Activate all control units'
4. **If** 'Activate control unit selection' is chosen, select which control unit(s) that needs to be activated and click 'Next'
5. The technician login is verified. It may be necessary to log in to PPN again at this time
6. After selection is made and pressing "Next", a 'Protection of vehicle diagnostics' window should open

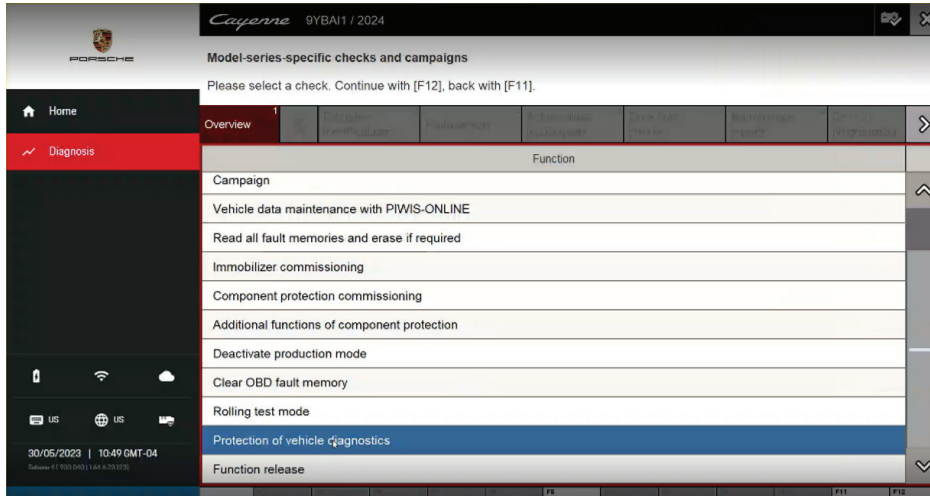


7. Click on each control unit one by one
8. Requested control units are now activated

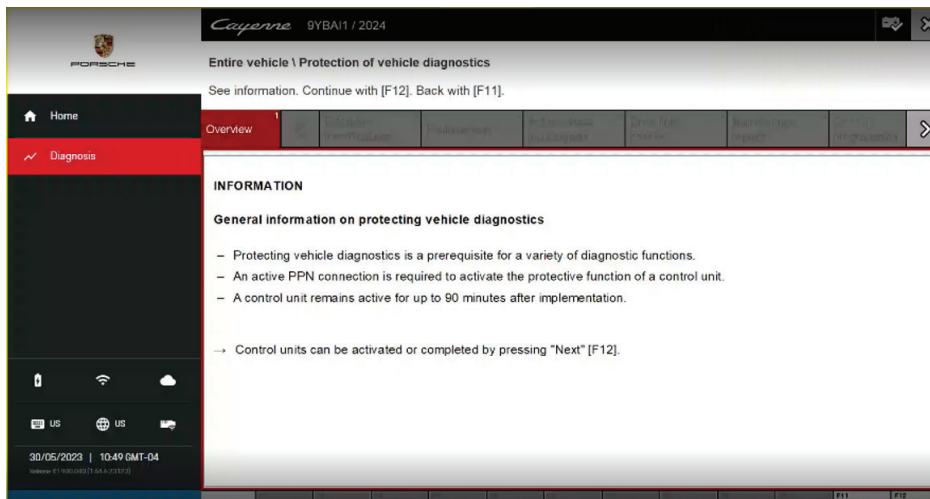


To **lock** the control units:

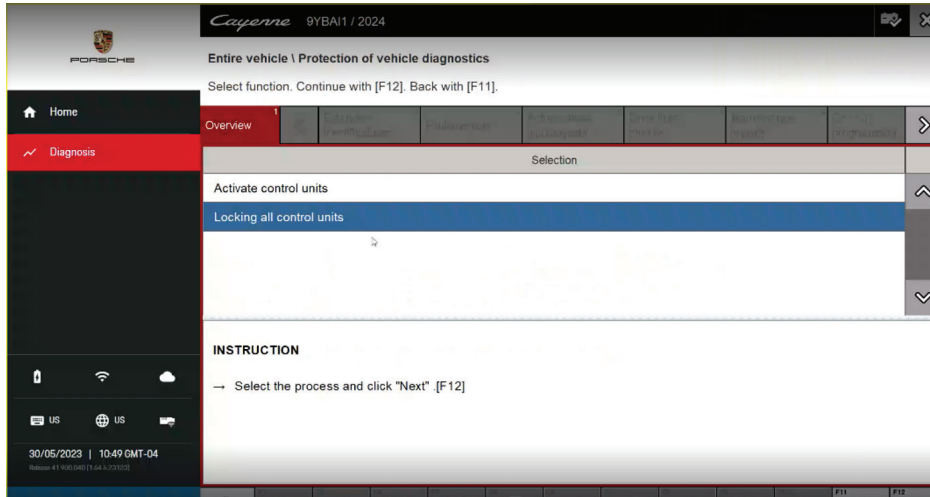
1. Go to Protection of vehicle diagnostics



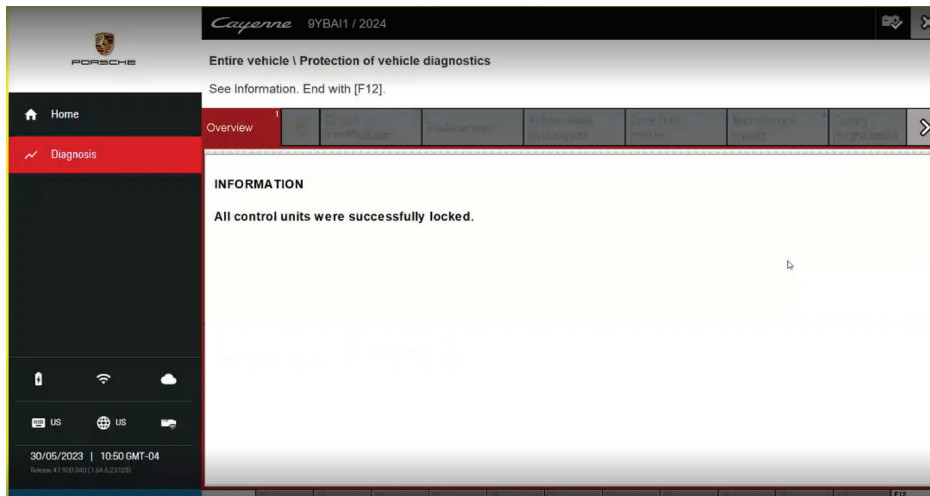
2. Information page appears



3. Locking all control units



4. After waiting, control units should be successfully locked



Warranty

No specific repair or diagnostic work is described in this document.

As always, document repairs completely in PCSS as needed.

Search Items

SFD, PVD, Protection of Vehicle Diagnosis, B184C00

Important Notice: Technical Bulletins issued by Porsche Cars North America, Inc. are intended only for use by professional automotive technicians who have attended Porsche service training courses. They are written to inform those technicians of conditions that may occur on some Porsche vehicles, or to provide information that could assist in the proper servicing of a vehicle. Porsche special tools may be necessary in order to perform certain operations identified in these bulletins. Use of tools and procedures other than those Porsche recommends in these bulletins may be detrimental to the safe operation of your vehicle, and may endanger the people working on it. Properly trained Porsche technicians have the equipment, tools, safety instructions, and know-how to do the job properly and safely. Part numbers listed in these bulletins are for reference only. The work procedures updated electronically in the Porsche PIWIS diagnostic and testing device take precedence and, in the event of a discrepancy, the work procedures in the PIWIS Tester are the ones that must be followed.
