



TECHNICAL SERVICE BULLETIN

Classification: KS22-003A	Reference: NTB22-037A	Date: January 17, 2023
------------------------------	--------------------------	---------------------------

INTELLIGENT KEY NOT DETECTED IN CENTER CONSOLE

This bulletin has been amended. See **AMENDMENT HISTORY** on the last page.
Please discard previous versions of this bulletin.

APPLIED VEHICLES: 2021-2022 Sentra (B18)
APPLIED DATES: 2021: All
2022: Built before June 24, 2022
APPLIED GRADES: SV, SR

IF YOU CONFIRM

The Intelligent Key fob is not detected when above or around the center console area.

ACTION

Use the **SERVICE PROCEDURE** in the bulletin to reconfigure the Hands Free Module (HFM).

IMPORTANT: The purpose of **ACTION** (above) is to give you a quick idea of the work you will be performing. You **MUST** closely follow the entire **SERVICE PROCEDURE** as it contains information that is essential to successfully completing this repair.

Bulletins are intended for use by qualified technicians, not 'do-it-yourselfers'. Qualified technicians are properly trained individuals who have the equipment, tools, safety instruction, and know-how to do a job properly and safely. **NOTE:** If you believe that a described condition may apply to a particular vehicle, **DO NOT** assume that it does. See your Nissan dealer to determine if this applies to your vehicle.

SERVICE PROCEDURE

IMPORTANT: Before starting, make sure:

- ASSIST on the CONSULT PC has been synchronized (updated) to the current date.
- All CONSULT software updates (if any) have been installed.

1. Confirm that the CONSULT PC is connected to Wi-Fi.
2. Connect the Vehicle Interface (VI) to the vehicle.
3. Turn the ignition ON with the engine OFF.
4. Start CONSULT-III plus (C-III plus) on the CONSULT PC.
5. If prompted, select **USA/CANADA Dealers** from the drop down menu, and then select **OK**.
6. Login using your NNAnet credentials.

IMPORTANT: If not prompted to enter your username and password, the CONSULT PC may not be connected to Wi-Fi. Close C-III plus, confirm the CONSULT PC is connected to Wi-Fi, and then reopen C-III plus.

7. Wait for the VI to be recognized, and then select **Re/programming, Configuration**.

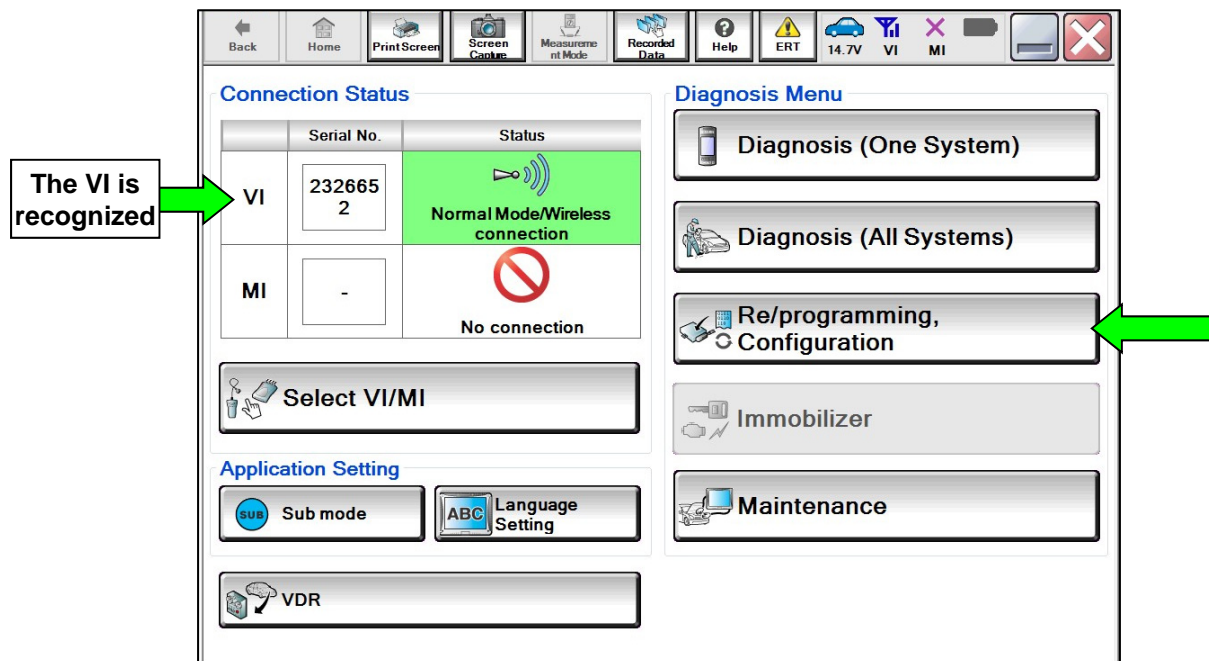


Figure 1

8. Use the arrows (if needed) to view and read all precautions.
9. Check the box confirming the precautions have been read, and then select **Next**.

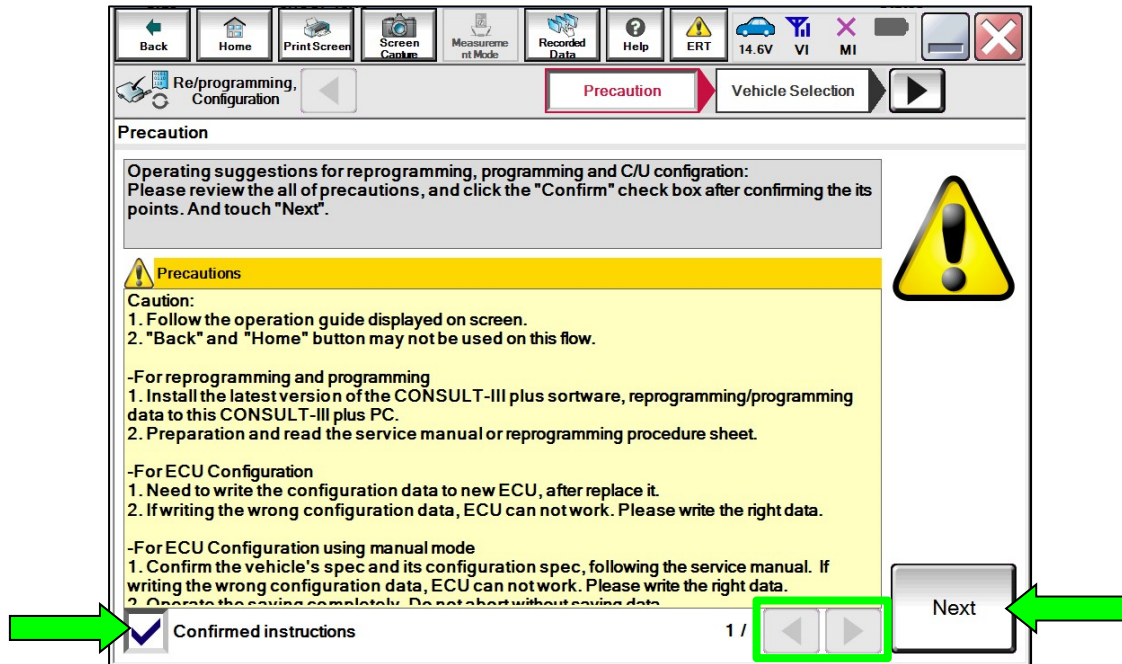


Figure 2

10. Select **Automatic Selection(VIN)**.

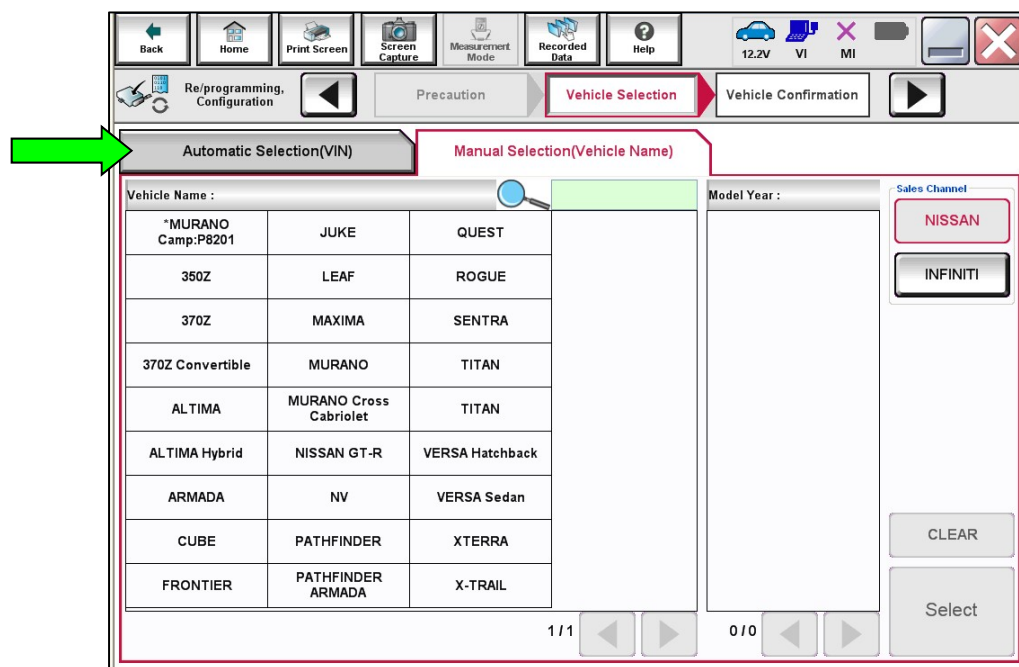


Figure 3

11. Allow the CONSULT to perform automatic VIN selection.

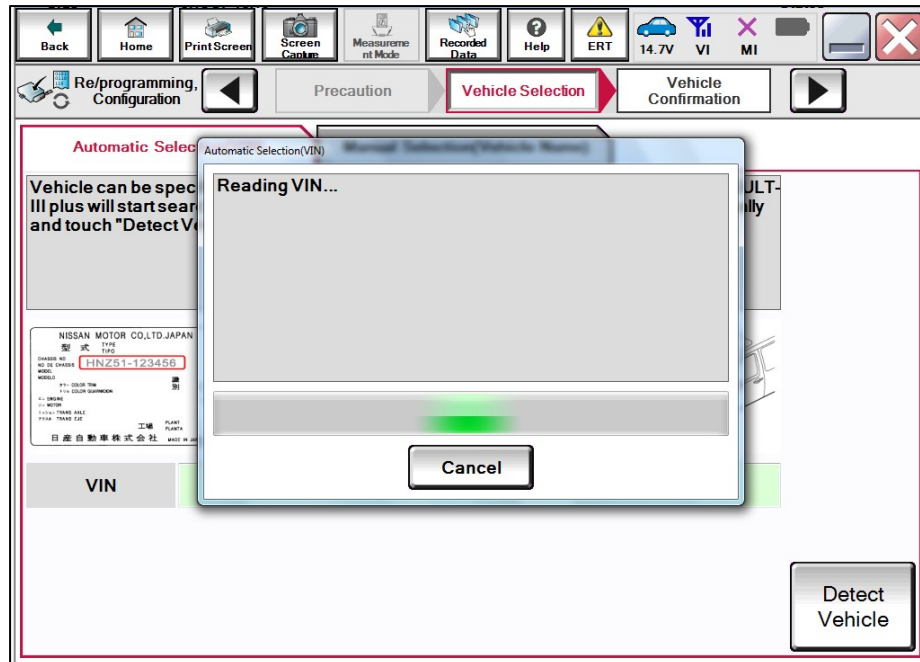


Figure 4

12. Confirm the **VIN or Chassis #** is correct, and then select **Confirm**.

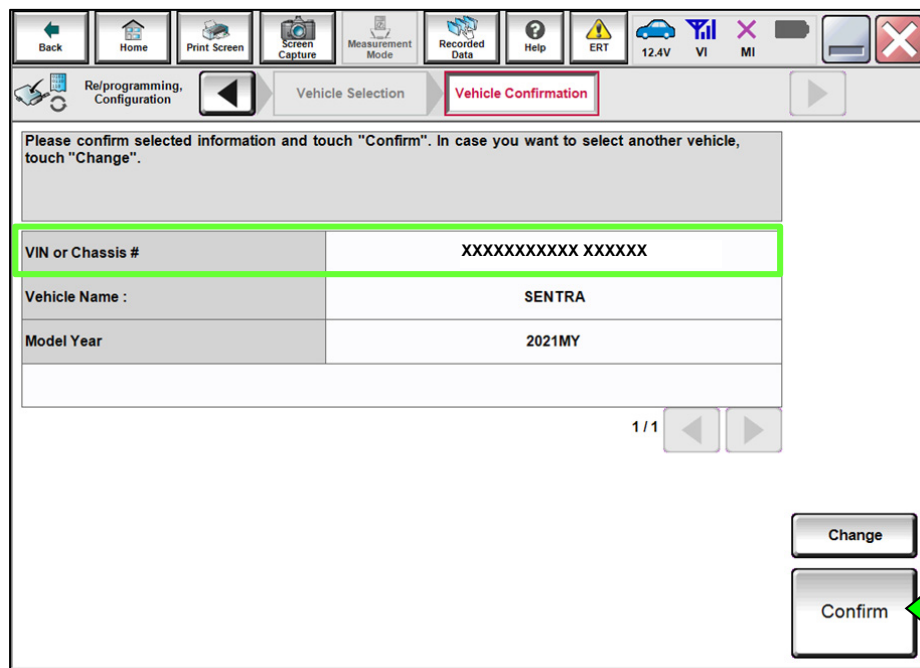


Figure 5

13. Allow the System call to complete.

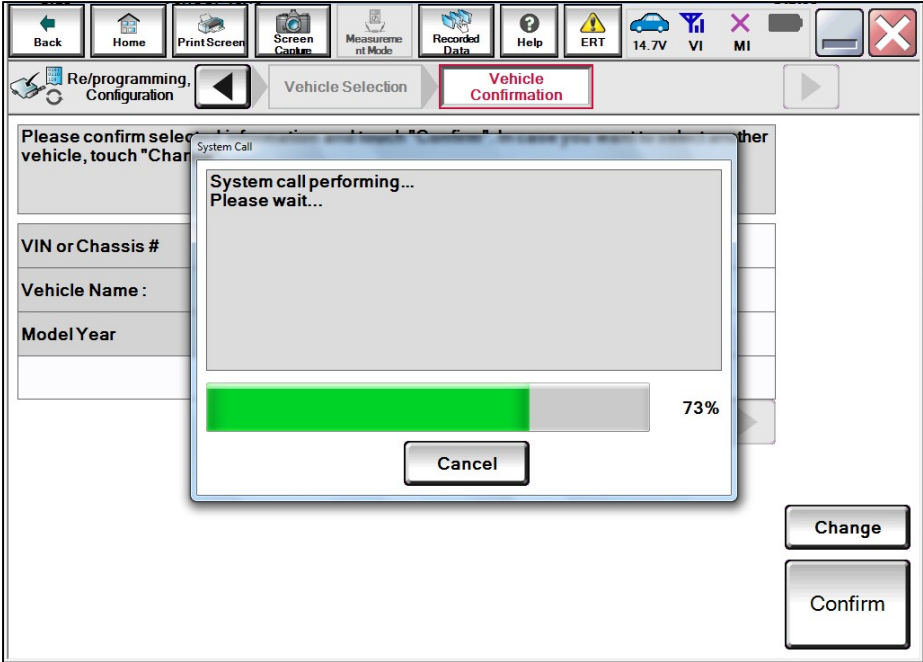


Figure 6

14. Confirm the VIN is correct for the vehicle, and then select **Confirm**.

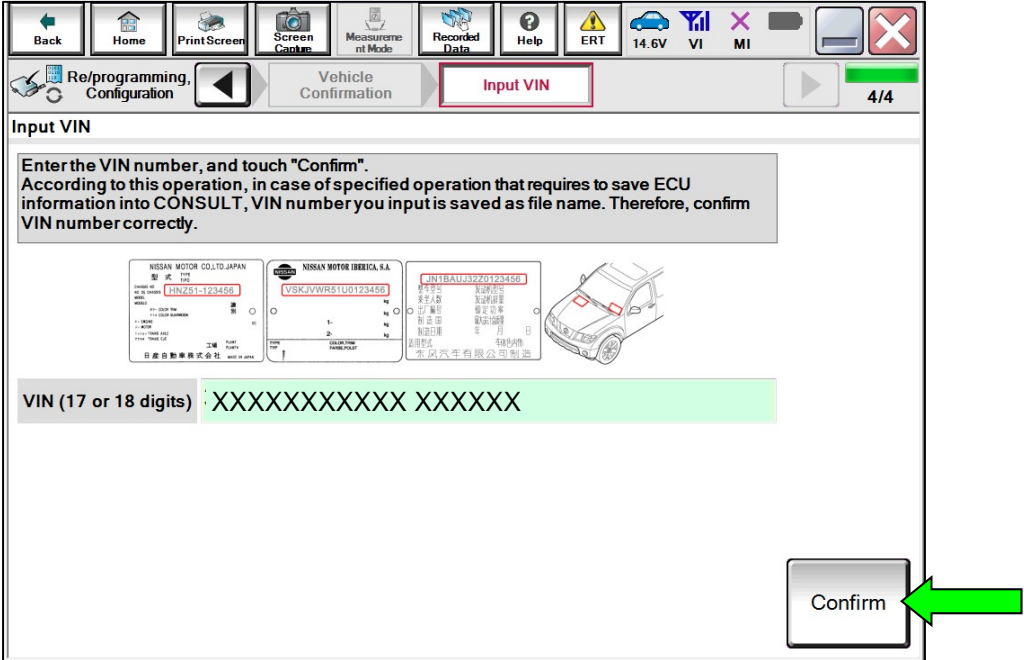


Figure 7

15. Select **HANDS FREE MODULE**.

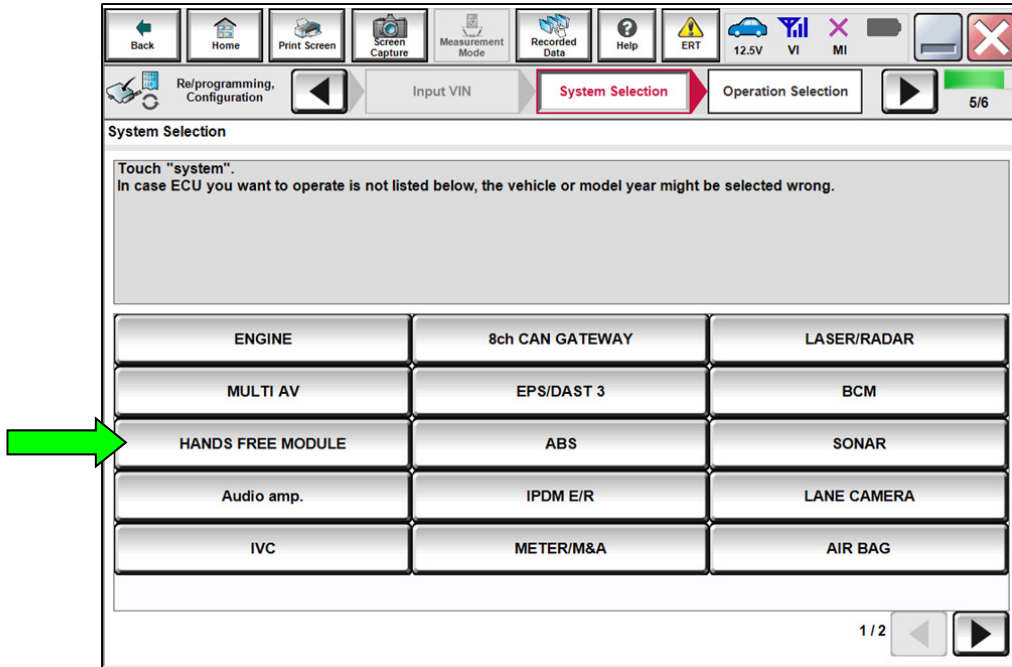


Figure 8

16. Select **After ECU Replacement** under **VEHICLE CONFIGURATION**.

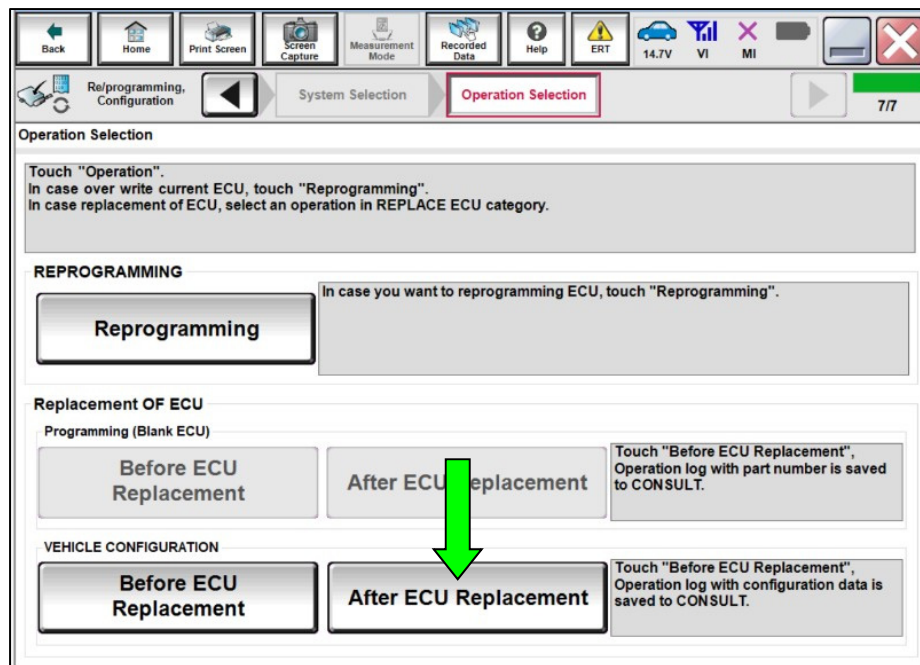


Figure 9

17. Select **Manual selection**.

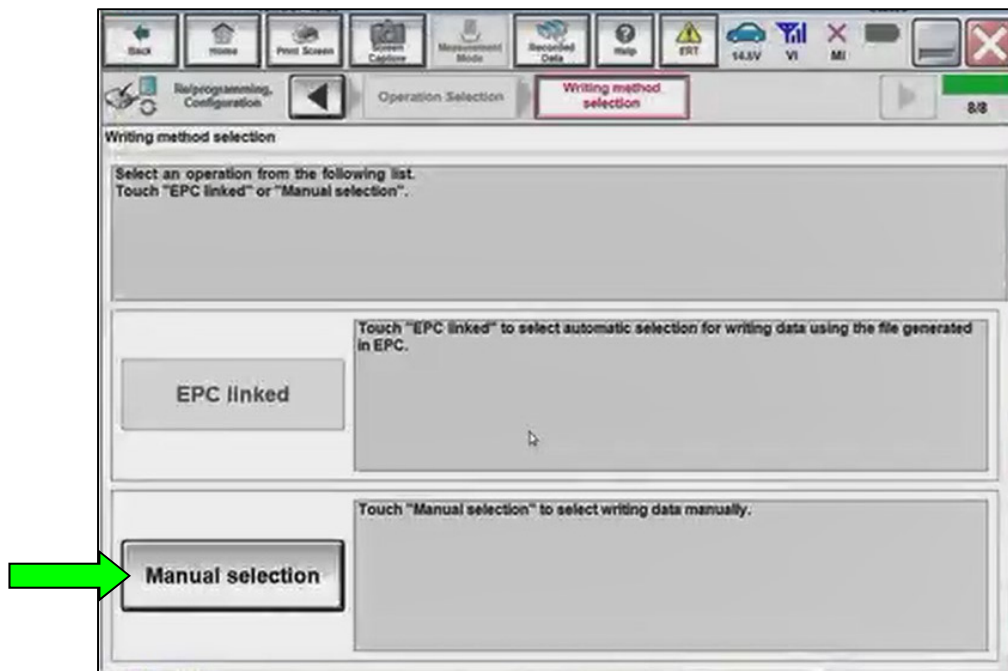


Figure 10

18. Select the applicable **Type ID** (see below), and then select **Next**.

- Vehicles with Remote Engine Start (RES), select "285J7-6LE1B".
- Vehicles without RES, select "285J7-6LE4B".

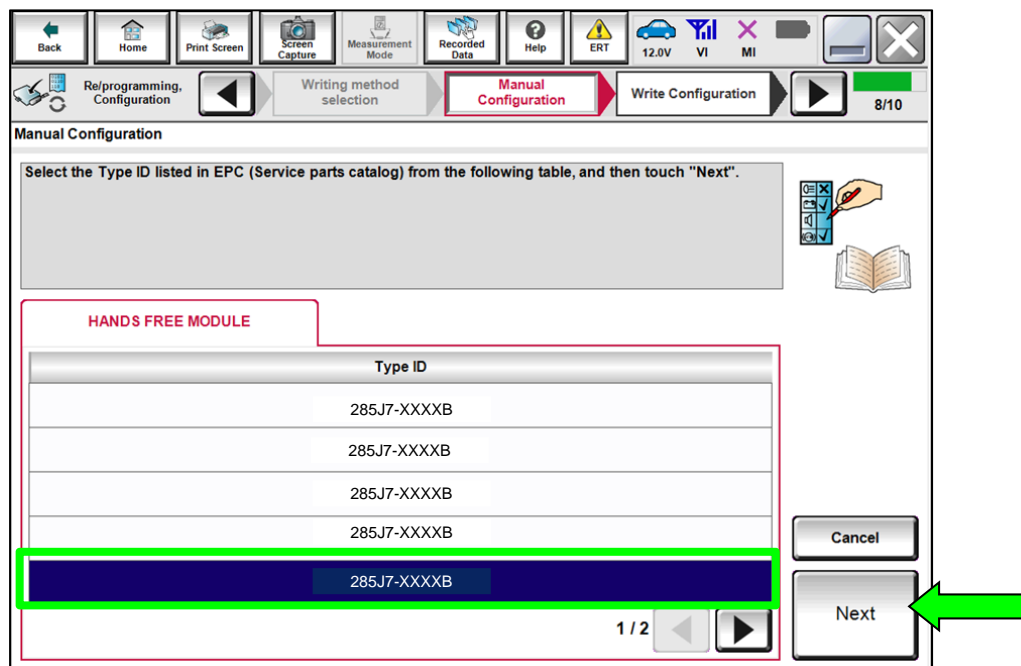


Figure 11

- Verify the ignition is ON and the engine is OFF, and then select **OK** to write the configuration.

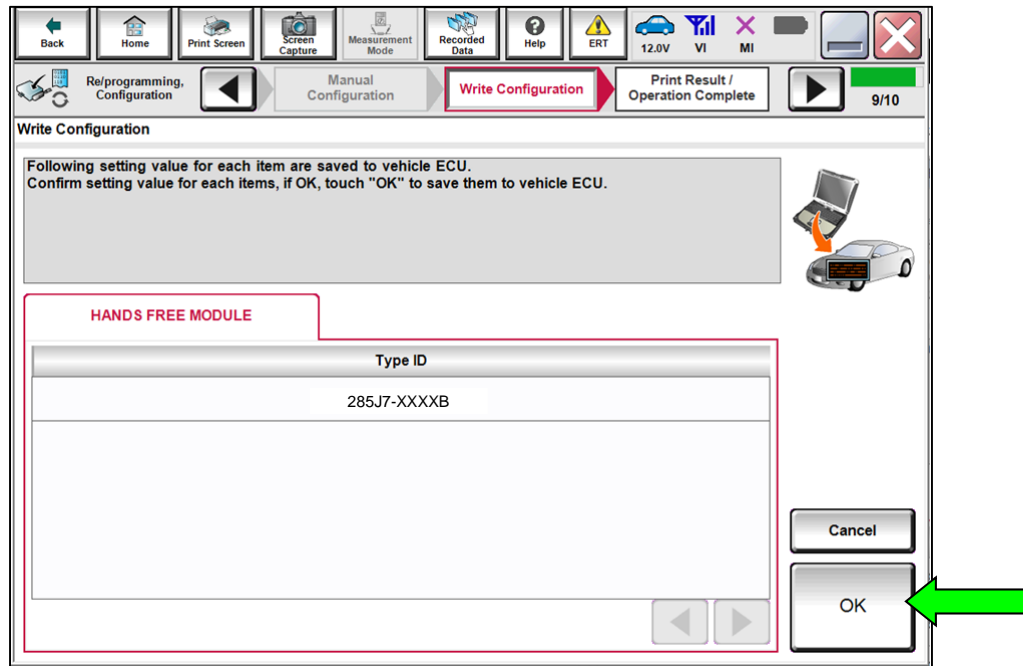


Figure 12

- Allow the **Write Configuration** to complete.

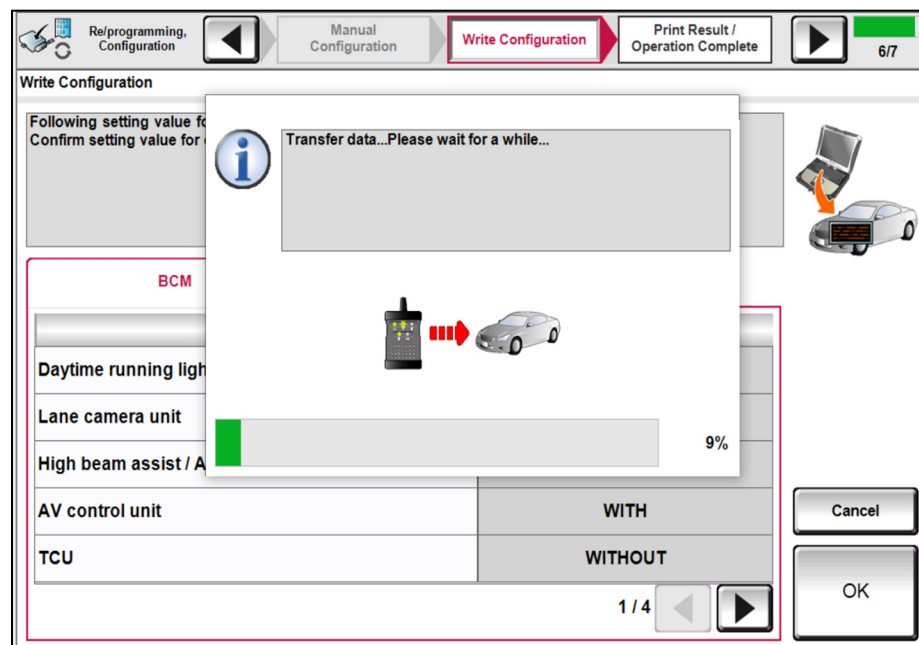


Figure 13

21. Confirm that the **Type ID** is now as follows:

- Vehicles with RES: "285J7-6LE1B".
- Vehicles without RES: "285J7-6LE4B".

22. Select **End**.

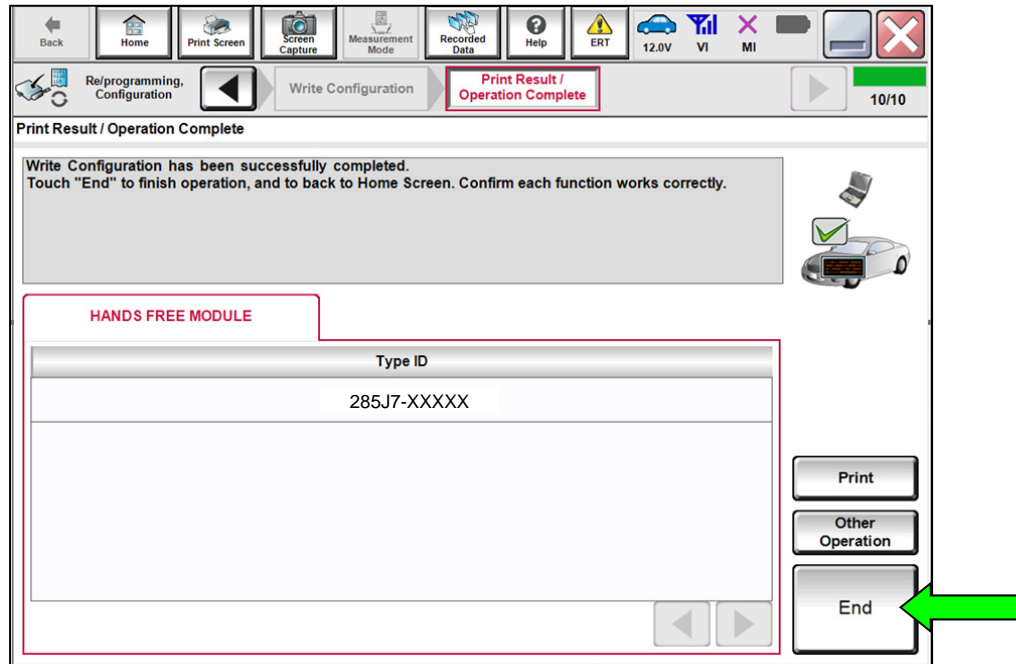


Figure 14

CLAIMS INFORMATION

Submit a Primary Part (PP) type line claim using the following claims coding:

DESCRIPTION	PFP	OP CODE	SYM	DIA	FRT
Reconfigure Hands Free Module	(1)	RXB3AA	ZE	32	0.3

- (1) Reference the electronic parts catalog and use the Smart Keyless Control Assembly (285E1-*****) as the Primary Failed Part (PFP).

AMENDMENT HISTORY

PUBLISHED DATE	REFERENCE	DESCRIPTION
August 16, 2022	NTB22-037	Original bulletin published
January 17, 2023	NTB22-037A	APPLIED DATES added, and login steps moved to page 2