



Technical Service Bulletin

SUBJECT:		No: TSB-22-52A-002	
MULTI-INFORMATION DISPLAY SELECTOR ADVANCES IMPROPERLY		DATE: February 2022	
		MODEL: 2022 Outlander	
CIRCULATE TO:	<input type="checkbox"/> GENERAL MANAGER	<input checked="" type="checkbox"/> PARTS MANAGER	<input checked="" type="checkbox"/> TECHNICIAN
<input checked="" type="checkbox"/> SERVICE ADVISOR	<input checked="" type="checkbox"/> SERVICE MANAGER	<input checked="" type="checkbox"/> WARRANTY PROCESSOR	<input type="checkbox"/> SALES MANAGER

PURPOSE

Customers may express a concern with the Multi-Information Display (MID) Selector advancing further than selected when rolling the steering wheel control switch. A magnet within the steering wheel remote control switch may misalign and create an inaccurate pulse, causing the MID to display improperly.

Upon customer complaint basis, please replace the part with a new one, on vehicles produced prior to April 7, 2021.

AFFECTED VEHICLES

- 2022 Outlander vehicles (Production Cut-off date is April 7, 2021).

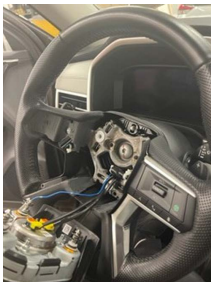


PROCEDURE

- Write down ALL electrical device settings such as A/C, radio and MID settings. The settings should be restored after the repair is completed.
- **Before servicing, ignition switch OFF, disconnect main battery negative terminal and wait for 3 minutes or more.**
- Always **work from the side of the air bag module** and **NEVER** in front of it.

Repair Procedure:

1. Disconnect battery and remove airbag module.



Copyright 2022, Mitsubishi Motors North America, Inc.

The information contained in this bulletin is subject to change. For the latest version of this document, go to the Mitsubishi Dealer Link, MEDIC, or the Mitsubishi Service Information website (www.mitsubishitechinfo.com).

Repair Procedure Continued:

2. Remove SW ASSY Steering parts using caution as the retaining prongs break easily. If the retaining prong(s) break off, be sure to retrieve the broken pieces before replacing with the countermeasure part.



3. Install the countermeasure parts. (Parts are identified with a check mark on all new part orders prior to December 31, 2021.)



4. Reinstall air bag module and reconnect battery. Restore all presets for A/C, radio and MID settings.

PARTS

Part Name	Part No.	Quantity	Specification
SW ASSY-STRG	8616A121	1	METER + AUDIO + TEL/VR + Cruise control
	8616A134	1	METER + AUDIO + TEL/VR + Adaptive Cruise Control
	8616A123	1	METER + AUDIO + TEL/VR + MI-PILOT

WARRANTY

This bulletin is supplied as technical information only and is not an authorization to repair. If an affected vehicle is reported with the described condition, diagnose the condition, repair as described in this bulletin and submit a normal warranty claim using the information below.

Operation Code	Operation	Nature Code	Cause Code	Time Allowance
548273EQ	Replacement	59D	990	0.4 Hours

Warranty Coverage: 5/60 Basic Coverage (Canada: 5/100)