

# AfterSales TSO – CIRCULAR LETTER

---



## MAS002675 (MCL 21-21)

From: Aftersales - TSO  
To: Maserati Network  
Auburn Hills, MI. | October 18, 2021

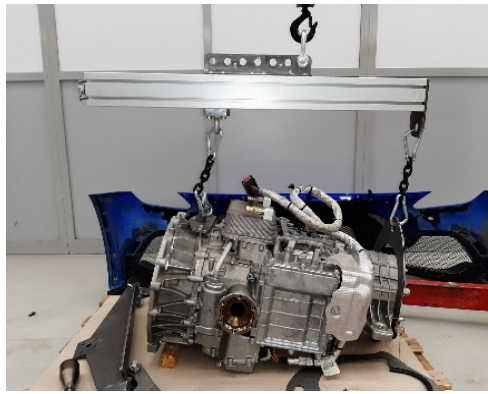
### Mandatory Special Tools for MC20

Dear Dealer Network,

For your information, listed below are special tools used for servicing and maintaining the new MC20. The tools listed are "Required" and will automatically be sent to each Dealer in several different shipments as they become available. These new tools will also be included in the ModisCS+ Special Tools Catalog.

The tools required are listed below along with a brief technical description:

- **Tremec lifting unit** (900029751): This tool is used to lift the entire gearbox correctly from the car for removal, installation and replacement procedures.



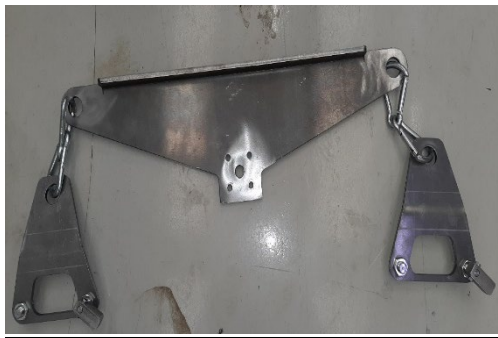
- **Flex plate clamp** (900029752): This tool is used to clamp the flywheel.



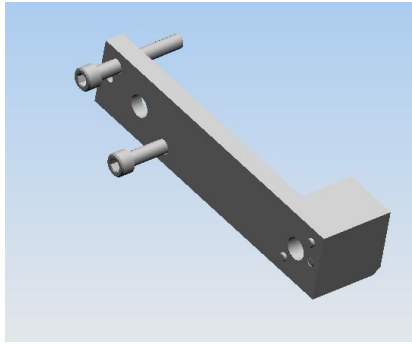
- **Rear camber adjustment wrench** (900030467): This tool is used to loosen the rear camber link nuts and for tightening them to the correct torque specs.



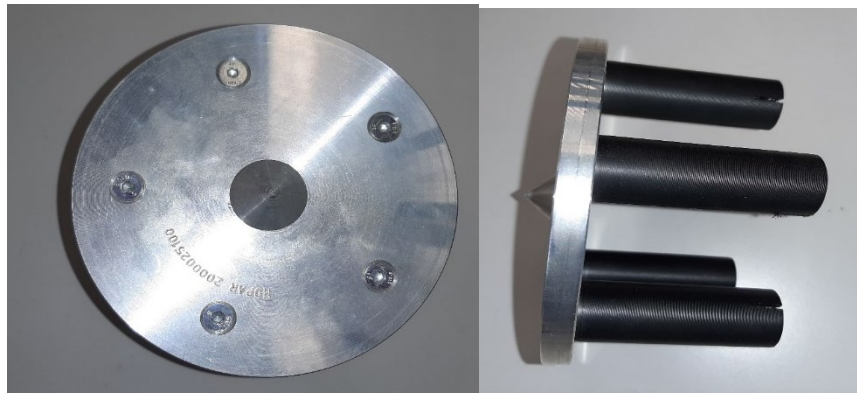
- **Engine lifting unit** (900030468): This tool is used to lift the engine for removal, installation and replacement procedures.



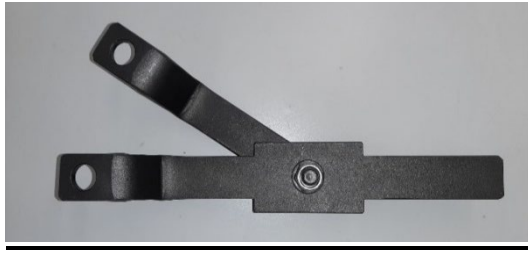
- **Crankshaft locking tool** (900029759): This tool is used to lock the crankshaft.



- **Suspension lever support** (900029760): This tool is used to remove and install the suspension levers correctly while maintaining the correct pre-load on the bushings.



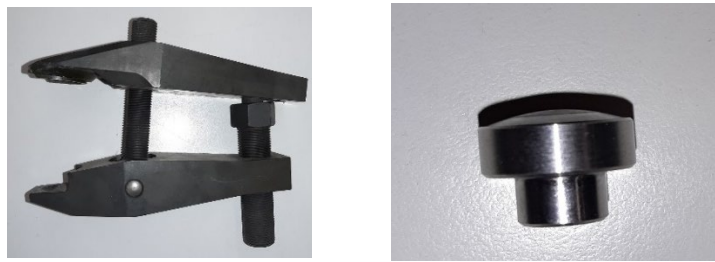
- **Wheel hub Anti-torque** (900029761): This tool is used to undo and tighten the wheel hub nut by helping to apply counter-torque.



- **Engine support cross member** (900030490): This tool is used together with tool 900029751 to support the engine after the gearbox has been removed.



- **Suspensions Head detachment tool** (900029764): This tool is used to correctly detach the heads of the suspension levers.



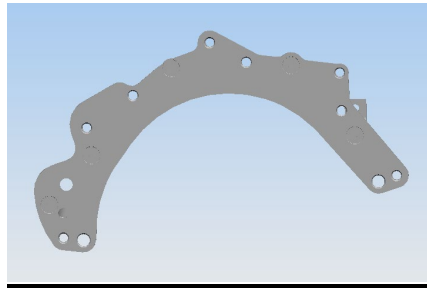
- **Oil seal intstaller** (900029765): This tool is used to correctly install oil seals.



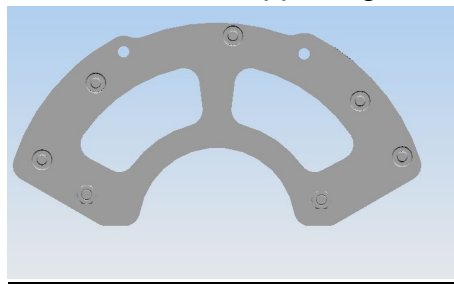
- **Injector extraction tool** (900029767): This tool is used to correctly extract an injector.



- **Engine support plate** (900029732) NOT for U.S. Only for LATAM dealers : This plate is used to mount the engine on the bench (Engine Stand) already available at dealers, supporting it on the timing side.



- **Engine support plate** (900029783): This plate is used to mount the engine on the bench (Engine Stand) already available at dealers, supporting it on the auxiliary services side.



Please review this information with your staff and if you have any questions, contact your Regional Aftersales Manager or the Maserati Technical Support Helpdesk.

Thank you for your continued support and cooperation.

Maserati North America, Inc.  
Aftersales Department