

Technical Service Bulletin

Topic	Replacing front wishbone links
Market area	Bentley: worldwide (2WBE),Hongkong-Macau (5HK)
Brand	Bentley
Transaction No.	2043974/2
Level	EH
Status	Released for publishing
Release date	Jun 16, 2016

New customer code

Object of complaint	Complaint type	Position
Chassis -> Wheels, tires, tire pressure monitoring -> Tires -> Tire tread	Appearance, surface -> Bulge	> no instruction <
Chassis -> Steering, steering assist -> Steer	Noises, vibrations -> Vibrating	
Chassis -> Steering	Functionality	
Chassis -> Steering	Noises, vibrations	
Chassis -> Wheels, tires, tire pressure monitoring -> Tires	Component, automotive fluids -> Installed incorrectly	

New workshop code

Object of complaint	Complaint type	Position
Chassis -> Wheels, tires, tire pressure monitoring -> Tires	Component, automotive fluids -> Out of balance	Right rear
Chassis -> Wheels, tires, tire pressure monitoring -> Tires	Component, automotive fluids -> Out of balance	Right front
Chassis -> Wheels, tires, tire pressure monitoring -> Tires	Component, automotive fluids -> Out of balance	Left front
Chassis -> Wheels, tires, tire pressure monitoring -> Tires	Component, automotive fluids -> Out of balance	Left rear
Chassis -> Wheels, tires, tire pressure monitoring -> Tires	Component, automotive fluids -> Installed incorrectly	> no instruction <

Vehicle data

All Continental and Flying Spur

Sales types

Type	MY	Brand	Designation	Engine code	Gearbox code	Final drive code
39*	2012	E		*	*	*
39*	2013	E		*	*	*
39*	2014	E		*	*	*

39*	2015	E		*	*	*
39*	2016	E		*	*	*
3W**	2003	E		*	*	*
3W**	2004	E		*	*	*
3W**	2005	E		*	*	*
3W**	2006	E		*	*	*
3W**	2007	E		*	*	*
3W**	2008	E		*	*	*
3W**	2009	E		*	*	*
3W**	2010	E		*	*	*
3W**	2011	E		*	*	*
3W**	2012	E		*	*	*
3W**	2013	E		*	*	*
4W2*	2014	E		*	*	*
4W2*	2015	E		*	*	*
4W2*	2016	E		*	*	*

Chassis numbers

Manufacturer	Filler	Type	Filler	MY	Factory	From	To	Prod from	Prod to
SCB	***	**	*	*	*	040000	057117		
SCB	***	**	*	*	*	000001	097155		

Documents

Document name
master.xml

Condition

Front wishbone link requires replacement (lower lever).

Technical Background

Only 'new' specification front rearward lower levers are available (containing U3 bush)

The differences are as shown in Figures 1,2 and 3

Figure 1, shows a lower lever with the original type bush fitted (U1 bush)



Figure 1

Figure 2, shows a lower lever with the latest specification bush fitted (U3 bush)



Figure 2

- Figure 3, shows the difference from the opposing side
- A is the original U1 bush equipped lower lever (non tapered)
- B is the new specification U3 equipped lower lever (with tapered ends)

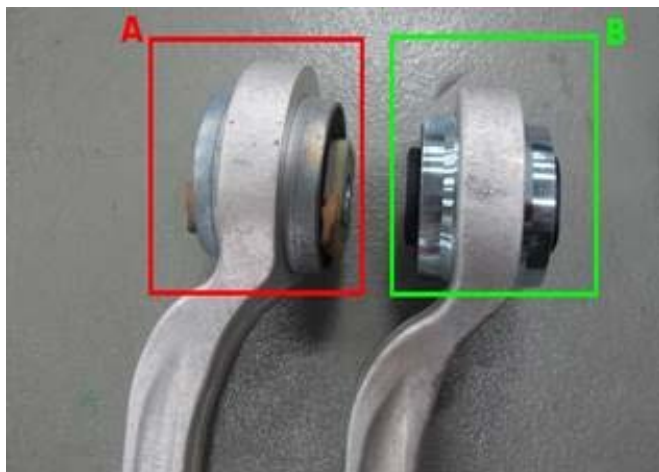


Figure 3

Production Solution

-

Service

Only lower levers containing U3 bush are now available

If it is necessary to fit a replacement lower lever then ensure on completion that these levers have the same bush type do not fit U1 and U3 equipped lower levers on the same vehicle

This means in the event of a lower lever replacement:

A vehicle fitted with original lower levers containing U1 bush will require both the left and right hand side lower levers to be replaced.

If the vehicle is currently fitted with the new specification lower levers containing the U3 bush then a single lower lever can be replaced when technically appropriate

This document is not intended to influence any technical decision made to change suspension elements in pairs when ensuring bush compliance characteristics are maintained across an axle

Required Parts and Tools

Description	Part Number	Quantity
Front wishbone link (Lower lever left) U3	3W0 407 693A	1
Front wishbone link (Lower lever right) U3	3W0 407 694A	1