



Hawaii Marine

Vol. 18, No. 38

Published at MCAS Kaneohe Bay. Also serving 1st MEB, Camp H.M. Smith and Marine Barracks, Hawaii.

September 27, 1990

'Show you care' during this year's CFC

By Sgt. W.M. Alexander

The 1990 Hawaii-Pacific Area Combined Federal Campaign (CFC) will get

underway Oct. 1. About 8,700 people from 25 federal agencies and military units throughout Oahu spearheaded the main drive with

a pacesetter charity drive Sept. 4 - 24 (see related story on page A-3).

With a goal of raising \$4.5 million among all Hawaii

servicemembers, this year's campaign theme is "Showing You Care." That care will be extended to 622 Air Station, local and national health and human care agencies who operate from CFC monies.

"There is perhaps no better time to hold the fund drive," said Lt. Gen. R.F. Milligan during the CFC Golf Tournament Sept. 14. "Priority is higher now than it was just a few weeks ago. Our Marines are deployed to Saudi Arabia and the organizations who provide support to their families left behind, benefit from CFC."

"They get donations, and turn right back around to help our families. Hopefully, this drive will give those organizations more energy to do their jobs."

Among the agencies who operate from CFC monies are those who help homeless children, the handicapped, disaster victims, disease research, youth service groups, battered women, and alcoholic counseling centers.

Incorporating numerous charitable campaigns, the CFC was established by

President John F. Kennedy in 1961. By grouping agencies together, the campaign relieves contributors of a barrage of individual requests for donations. The campaign has come to be a once-a-year drive which gives federal employees the opportunity to contribute to hundreds of charities through payroll deduction. The recipient agencies are listed in the CFC Donor Brochure only after demanding eligibility requirements are met.

The brochure lists details about the agencies, which make it easier for contributors to choose which one they want to support. Contributors are also encouraged to visit these CFC agencies to see their funds put into action.

"I have visited a few of these organizations myself," said Capt. R.G. Brown, officer in charge of the Training Audiovisual Support Center and Station CFC project officer. "I know first hand that the money given will be well spent."

Brown said this year's Station goal is \$50,000, down from \$61,900 due to a 30

percent reduction in station personnel. The 1st MEB's goal is \$100,000, while 1st Radio Battalion hopes to raise \$7,800. These dollar amounts were also cut to compensate for personnel deployed to Saudi Arabia.

"Everyday I witness the things these organizations do to support people in Hawaii as well as our families here on Station," said Col. R.R. Critser, Station Commander. "For just the few dollars donated, everybody benefits. Marines have always been leaders and here's the chance to do it again."

According to Cmdr. Don Kuehne, the assistant project officer of this year's fund drive, 96 cents of every dollar goes to these charities. He said because everything is donated, the fundraising staff has been able to keep its administrative costs low.

"We plan to have about 80 speakers, from donors and recipient agencies, give talks throughout the campaign about what CFC is and what it does," said Kuehne. "If people understand this, I'm confident that the tradition of giving will go on."



Cpl. Reginald M. Coe photo

Marines from the FMFPac Showband perform before hundreds of people during a Combined Federal Campaign benefit Sept. 13 at the Hale Koa Hotel in Honolulu.

Hawaii's aircraft support MAG-16

MAG-16 fully operational

By Cpl. Steve Nelson
1 Marine Expeditionary Force

SAUDI ARABIA — The last of 1 Marine Expeditionary Force's helicopter aircraft arrived here Sept. 5, enabling the temporary helo section here to become fully operational.

Marine Aircraft Group 16 began deploying its assets Aug. 14 aboard Air Force C-5A "Galaxy" transport planes. Aircraft came from the 1st and 7th Marine Expeditionary Brigades out of Hawaii and Southern California respectively.

The helicopters from Hawaii are heavy lift CH-53D "Sea Stallion" and medium lift CH-46 "Sea Knight" aircraft home-based at MCAS Kaneohe Bay. Assets from 7th MEB include the light UN-1N "Huey" and AH-1T "Super Cobras" from MCAS Camp Pendleton, Calif., along with the medium lift CH-46s, CH-53Ds and CH-53E "Super Stallions" from

MCAS Tustin, Calif.

"The deployment went relatively smooth considering we had so many assets to move," said Lt. Col. Michael Aguilar, MAG-16 executive officer. "The mood before we left and on the way over was very upbeat and everyone was anxious to get off the planes and get to work. Once each C-5 landed, it didn't take long to get the birds off the plane and in an operational status."

Aguilar said the Hueys and Cobras, because of their small size, were easily loaded, unloaded, and ready to fly within hours after debarkation. The heavy and medium helicopters required disassembly and alterations in order to squeeze into the bodies of their C-5 carriers.

On the ground, the first obstacle MAG-16 Marines had to tackle was the climate. Occasional heavy winds, combined with the scorching desert heat and

blowing sand, made working on the flight line virtually unbearable. But as the Marines slowly became acclimatized, working in the heat seemed to become easier day by day.

Aguilar said the effects of dust on the helicopters can be detrimental, but not a show stopper. "We'll just have to work around it by performing routine maintenance," he said. "It's really no worse than the conditions at (MCAGCC) 29 Palms or (MCAS) Yuma."

As far as the intense heat goes, there are two areas where it affects the helicopters — the temperature of the metal on the helicopters and lift capability.

Because metal panels and parts get so hot, gloves are often worn by crew chiefs and mechanics while working on the aircraft. Also, lift capability is reduced by heat.

"Because the temperatures

See MAG/A-4

Brigade Personnel in the family assistance business

By Cpl. Jason Erickson

The Brigade Personnel office is busy with administration as usual. The waiting area is seldom a lonely place and the clerks scuffle back and forth between offices with forms, forms and more forms.

There is one big difference at the office lately, however. While Marines are usually the "customers," the present work load is being filled by their spouses.

Since Sept. 10, the office has taken on the additional duty of supporting all Marine Corps-related problems spouses of deployed Marines may have.

Those problems, explained Brigade adminis-

tration deputy assistant chief of staff, G-1, Capt. Gary Dixon, range anywhere from pay to housing and everything in between.

"Normally, when a Marine is deployed, his company office handles any problems the spouse might have, but many of the companies are completely gone now," Dixon said.

Lt. Col. Esteban Lopez and Cpl. Tanya Williams are in the thick of it. Helping spouses has become a full time job for them.

Esteban estimated that they've helped about 40 spouses so far, and there are always three or four waiting to be added to the list.

"A lot of them just have questions, but most have real problems that have to be solved," Esteban said. Many are pay related. Some even ask for advance pay. Esteban explained that with any step, such as getting a government loan, the Marine is contacted via message traffic to the Middle East, and must give the go ahead.

Dixon explained that while the office is happy to answer questions, their ability to help is limited to Marine Corps problems. "The best thing for a spouse to do if she has a problem, is contact her ombudsman or the Family Service Center," Dixon said. "Then, depending on the nature of the problem, they will tell her who can best help."

In Brief

Danger Pay Granted to Desert Shield Personnel

Secretary of Defense Dick Cheney has authorized imminent danger pay to military personnel serving in the Middle East in support of Operation Desert Shield. The pay is retroactive to Sept. 19. The action will provide qualified officers and enlisted personnel with an extra \$110 per month. Some areas in the Persian Gulf region had already been designated with the special supplemental pay. The Secretary of Defense has the authority to grant the pay to members of the Armed Forces serving in specified areas of high risk.

Children/Adolescent Support Groups

The Family Service Center here is developing children and adolescent support groups for those who have a parent

deployed to Saudi Arabia. The support program will consist of four weekly sessions with approximately six members in each group, and participants will be grouped by age/school grade. The groups will be led by a professional adult group leader. Family Services will be taking the names and ages of those interested and the times the children/adolescents will be available. For more information, call 254-1541.

DEERS Enrollment Policy Changes for Newborns

To avoid problems in the payment of CHAMPUS claims, parents must now enroll their children in DEERS. This is particularly important for members with children under one year old who were exempt under the previous policy. Enrolling children can be accomplished with a certificate of live birth, which is available within a few days. Since this document is accepted as proof of birth, children are no longer exempt from being enrolled in DEERS.

Community Information Day Slated

Family Services is holding a Community Information Day in the Station Theater and surrounding courtyard area Sunday starting at 1 p.m. There will be booths from MWR,

Navy Relief, the Station Chapel, DEERS/TIA and Disbursing to name a few. Free cartoons for the kids will be shown at 2 p.m. In the Theater, MWR will serve refreshments, and the Lannal Snackbar will sell food at a reduced rate. The Community Information Day, which differs from the Community Day festival, will be held on the last Sunday of every month. The Community Day festival will be held quarterly. For more information, call Cpl. Agne at 254-1541.

Pay Deductions Will Support Naval Home

Effective Monday, 50 cents will be deducted each month from the pay of regular Navy and Marine Corps enlisted and warrant officer personnel. The deductions will be used to support the Naval Home in Gulfport, Miss. In the past, funding for the Naval Home's operation has been appropriated annually as part of the Navy's budget. Congress has since mandated that funding could no longer be appropriated. The home, founded in 1811, provides primary residence for retired Navy and Marine Corps personnel who are receiving retired pay, and honorably discharged veterans who served with the Navy or Marine Corps during a period of national conflict.

Hawaii Marine

TOL	A-3 Religion	B-4
ASTMCA	A-3 Hawaii Marine Ads	B-4
Family Services	A-10 Movies	B-5
At a Glance	B-3 MWR Tickets	B-5

Family grams to Operation Desert Shield

While Marines and sailors deployed to the desert from Hawaii are half a world away from home, the Hawaii Marine is now being sent to Saudi Arabia weekly. This column has been created as a link of communication between leathernecks and loved ones to help bridge the gap of distance.

All active duty and retired servicemen, as well as bonafide family members, are

welcome to submit a message. Equally, Marines and sailors in Saudi Arabia who wish to publish a message can send 20 words or less to: Editor, Hawaii Marine (JPAO), MCAS Kaneohe Bay, HI, 96863.

Those not in Saudi Arabia, must submit their message on an official form in person to the Public Affairs Office between 7:30 a.m. and 4:30

p.m., Monday through Friday. The forms are available at the office and only take a few minutes to complete. Be sure to bring your ID card.

The editor reserves the right to deny any message based on its content, so pay careful attention to what is said in your message to ensure it gets published. The messages and picture will be printed on a space available basis.



Elizabeth and Adam Legler

Congratulations! It's a boy! We love and miss you very much. Adam and Elizabeth.

Hi Pete! We miss you and the kids want you home to wrestle. Don't worry. Love, Monika, Adison and Katie.

Tigger: Love you and miss you. Don't worry, I'm fine. I moved. Take care, write soon. Hugs, kisses. Love, Nermal.

B.B.: Remember the fun we had before you left. I'm waiting! Love always, Pinky.

Hi Dad: Your shortstop loves and misses you a lot. Love Autumn.

Dear P.D.: We love you. We miss you. Our thoughts are with you. Please be careful. Love Nancy, Michael and Lindsay.



Troy Eugene Reagan Jr.

Honeybuns Kirtley: Hang in there. Have some fun if you can find it. Stay safe. All my love, Jessica.

Hi Scott: We all are fine. Miss you and love you very much. Take care and write us soon. Bear.

Chris: Christopher, Nicholas and I buck you. We need you, miss you and love you a lot. Hope you're back real soon. Love, Cindy

Tim: Your truck is repairable, don't worry about it. That's what insurance is for. If you need anything, just ask. Bill.

To Alpha Company Commander, and all his troops: Without these girls, I would probably be lost. We are all proud, Maria Flemming.



SSgt. Steve, Sue, Stevie and Scotty Faunesucht

LCpl. Jude Woodarek, 3d Recon: I love you and am proud of you. Be strong. Miss you. Your best friend, Nicolyn.

Hi there light of my life: Angel and I are fine, not great but fine. One day closer to return. Barb.

Capt. Michael Barnes: We are loving and missing you. Stay safe and come home soon. Yours, Carol, Stephanie and April.

Jeffery Seasons: Your family loves and misses you so very much. Annette, Keonda and Kimberly send you our love. Mahalo.

Wolfy: Treasures I hold dear, our faith, memories, love, children, letters and your voice recorded on our answering machine. Linda.

SSgt. Dock Phelps of AAV: We'll survive in your absence, but would truly treasure your presence. Love, Lynn, Scooter, Shawalyn.

Jimmy: We love you and miss you big time! Katie says "I lub you." Dan-o sends smiles. Love ya, Jules.

Sgt. Winborne: Just a few lines to say we love you and hurry home. Sheena, Tomica and your wife Jacqueline.

Just a few lines to say I love you from your sweetheart. Cpl. T.L. Clemons

Hi Bear: I love you very, very much. Jessica, Barney and I are fine. We love you. Semper Fi, Bear!



Heather

SSgt. Hillman: Tracer just a short to say we love you. Our thoughts are with you always. Semper Fi.



Cheryle, Michael and Alicia Hillman

Sgt. Moyer: We all miss you big time bunches. Love you, T.J., Sisay, Debby, Coco and DeeDee.

HQ, 1/12: We are all doing fine. We miss you very much. Write us soon. Debby, ombudsman.

Jeff: We're always thinking of you. Love you very much and miss you. Keep safe. Love ya, Ginny, Nick, XIE

Paepaevalu: We love you and miss you very much. Take care of yourself and write us soon. Love, Susie and Rebecca.

Thomas: Candice and I miss and love you. Our prayers are with you. Love eternally, wife and child, Betty and Candice.

The kids and I love you very much. Please come home soon. Also don't worry about us. Love you, Beverly Wade.

Hi Honey: Just wanted to tell you I love you and miss you. Hope you come home soon. Sandra.



Linda, Charly, Sarah, Matthew, Jessica, Andrew, Daniel Wolfertz

Misha: A vous toujours je t'aime. We await your return with hope, prayers, love. Force be with you. Love Pooh.

Cpl. Kevin Inabnit: Grandma and Grandpa love you very much and we are thinking of you. Take care of yourself.

Cpl. Kevin Inabnit Sr.: Your family loves and misses you very much. Take care. Come home safe. Love, your wife.

Hi Rob: I'm counting the days until I see you again. Take care, be safe. Love and miss you, Lynn.

Michael Natale: We love you and pray for your safe return. God Bless you, Love always, Trish, Jessi and Jeremy.

Cpl. Troy Reagan: We love you and we miss you very much. We are waiting. Love always, Kelly and T.J.



Amber and

Sgt. James: Cristin and Lisa are fine. We love you and miss you. Can't wait to see you. Love Lisa.

Rick: Be ready for Texas-size hugs and kisses when you return. We miss you. Love, Judi, Jenna and Rebecca.

LCpl. Freeman: We love you, miss you and are thinking of you. Everyday, patiently awaiting your return. Tracy and Michael.

LCpl. Dessart (Stunkie): I miss you. Baby everything is fine. I love you! Hang in there. Love Vicki and Baby.

Capt. Hernandez: Everything's fine back here. Please take care. I love you very much. Write please. I love you. Rachel.

Dear GWWV: Your family loves and misses you very much. We are so proud of you. We're praying for you. Kathleen.

Dear Jeffrey: We miss you! We are doing fine. Take care of yourself! Your loving family, Missy, Jeff and Robbie.



Grant Williams

Daddy Jarhead: Hurry home! We want our bikes and mom won't buy them! Mom says stay away from the camels.

Dear Steve Faunesucht: We are fine except for missing you. Praying for you all. We love you, Sue, Stevie, Scotty.



Christopher and Nicholas Grey



Adison, Monika and Katie Zoretic

Hawaii Marine

The Hawaii Marine is an unofficial newspaper published every Thursday by RFD Publications, Inc., 45-625 Luluia Road, Kaneohe, HI 96744, a private firm not connected with the Department of the Navy or the United States Marine Corps. All advertising is provided by RFD Publications, Inc., by calling 826-5881 or by visiting their office. Circulation is 8,000.

The Hawaii Marine is a free publication delivered each week to all family housing units aboard Marine Corps Air Station, Kaneohe Bay and to all Hawaii-based Marine Corps commands. Housing carriers are paid only

by voluntary contributions from customers who are satisfied with the youngsters' delivery service. A voluntary contribution of \$1.50 a month may be solicited by these carriers. Housing residents may contact the publisher directly if they wish to stop home delivery. Questions concerning circulation policies and service can be answered by calling the publisher.

The Hawaii Marine welcomes stories and photo submissions from its readers, and can respond to timely requests for specialized coverage. Please call the MCAS/1st MEB Joint Public Affairs Office at 257-5745 for ward activities or the Fleet Marine Force, Pacific, Public Affairs Office at 477-6662 for Las Vegas activities. Opinions expressed by the publisher and journalists are their own, and are not to be considered an official expression of the Department of the Navy or the United States Marine Corps.

Items advertised in the Hawaii Marine must be made available for purchase, use, or patronage to everyone without regard to race, creed, color, national origin, religion, age or sex of purchasers, user or patron. The appearance of all advertisements in the Hawaii Marine, to include inserts and/or flyers, does not constitute endorsement of the firm, products or services by the Department of Defense, the Department of the Navy or the United States Marine Corps.

Commanding Officer Col. R.R. Critzer
Public Affairs Officer Capt. L.M. Ryan
Editor SSgt. T.L. Allen

Barracks Marines set the pace

By Sgt. R.P. Taylor

CAMP H.M. SMITH—The "Pacesetter" portion of the 1990 Combined Federal Campaign wraps up today with this year's Marine representatives, Marine Barracks, Hawaii, showing an overwhelming success.

Final figures are not yet available, but as of Monday, the Barracks Marines responded at a participation rate of 93.1 percent, with donations totalling \$24,315 (125 percent of the dollar goal). The success comes despite the Barracks being a nearly last-minute entry into the campaign which kicked off Sept. 6.

The Marine Corps prides itself on readiness—the ability to respond immediately and effectively to any situation, and the Barracks Marines accomplished exactly that. While many Hawaii Marines have been proving their effectiveness in Operation Desert Shield, Marine Barracks jumped in to fill the void left by the deployment to take on the challenge of this year's campaign, a task that would have otherwise gone to one of the 1st MEB units currently deployed.

The call to Marine Barracks to lead the charge for CFC contributions came only several days before the campaign's opening day, leaving little time to prepare and get the word out. However, according to Capt. Tom W. Baker, Commander, Headquarters and Services Co., Marine Barracks, Hawaii, "Everyone was open and receptive to the cam-

aign. Everyone from the most senior Marine to the most junior participated. The success of the campaign is due to the outstanding help of my three keypersons, Staff Sergeants Derrick Fry, David Bach and Alvin Blair, who were the backbone and the drive of the entire campaign. With these Marines and the outstanding films provided by CFC, the Barracks couldn't have been anything else except successful."

The Pacesetter program is a three-week mini-campaign conducted before the start of the actual Combined Federal Campaign, which gets under-

way Monday. The pacesetters are selected military units and federal agencies, picked for their good track records and potential for high achievement in setting the awareness and momentum for the CFC main campaign.

With the example now set by the Barracks, other Hawaii Marines will have the opportunity to do their share in the 1990 Combined Federal Campaign. Every unit will have a CFC representative or keyperson that can explain CFC and how each contribution can help.

According to campaign coordinators, it's important to

recognize that, in contributing, Marines and sailors are not only helping others, but also helping organizations that they or their families and friends may call on for assistance and support.

During Operation Desert Shield, for instance, many agencies supported by CFC are available to help in the day-to-day life, as well as special needs, of loved ones left behind. Those agencies and many others will benefit from the pacesetter efforts of Marine Barracks, Hawaii and from each Marine's consideration during the upcoming main campaign.



ARE YOU IN PAIN PAIN PAIN

Have you been in an accident?

We Provide:

- Advanced Neck & Spinal Care
- Complete Therapy Treatment
- Advanced Diagnostic Facilities for the Treatment of Whiplash and Trauma Cases

No-Fault Pays 100% of Most Medical Claims

On the Job Injuries Are Covered by Workers Compensation

FREE Consultation

Pali Chiropractic 261-2207
Dr. David L. Halpain 1247 D. Kailua Road
 Chiropractic—the natural approach to good health.

MAKE EYE CONTACT

SOFT CONTACT LENSES

- Daily
- Tinted
- Extended Wear
- Disposable

Complete Professional Vision Services
 Dedicated to Quality And Service In Vision Care

FAMILY EYE EXAMINATION PLAN . . . \$49.00
 SOFT CONTACT LENSES from \$79.00
 PRESCRIPTION GLASSES from \$49.00

Includes All Immediate Family Members
 Includes Care Kit Follow-up Care
 90 DAY TRIAL PERIOD

DR. CHARLES DEAN - Optometrist
 139 Hekili St. - Kailua **261-9735**

HOLIDAY THEATRES

Enchanted Lake Cinemas
 1060 Keolu Dr. 263-4171

"CLASSY, CRACKLING SUSPENSE."
PACIFIC HEIGHTS

5:15, 7:30 & 9:45
 Sat & Sun: 12 & 2-15

MARLON BRANDO
MATTHEW BRODERICK
THE FRESHMAN

5:30, 7:45 & 10
 Sat & Sun: 12:15 & 2-30

WALK HARRIS

5 & 9:30
 Sat & Sun: 12:30 Cont.

KAILUA 261-9103

ARACHNOPHOBIA

Eight legs and an attitude.
 7:15 PM

BACK TO THE FUTURE III

Sat & Sun: 12 Cont.
LAIIE 293-8488

THE CRIZZLES
THUNDER

7 & 9:15
NANAKULI 688-8775

GEORGE C. SCOTT

8:30 & 9:45

TOWER RECORDS

Neil Young and Crazy Horse Reunite: Ragged Glory Disc One of Their Best

BY BRIAN MURPHY

Neil Young has reunited with Crazy Horse and released one of the best records he's ever made. Granted, not every Young fan will go wild over Ragged Glory (Reprise). If your favorite album was Harvest or Comes a Time, it might send you running for earplugs. But if you loved "Cinnamon Girl," side two of Rust Never Sleeps and all of Re'ac'tor, then this is the album you've been waiting about ten years for.

Young parted company with Crazy Horse in 1986. They had split before, but this time, apparently, for good. Young announced that his new band, the Bluenotes would be the keeper. Crazy Horse responded with an album called Left for Dead.

So what brought them together? "It was too much fun to miss," Young

explains. He caught the bug while combing through old tapes for a massive retrospective boxed set, originally called Decade II and still set for release next year. "I had seen everything we did together, and that made me want to play again. All these records (with Crazy Horse) are milestones, they're all related. The records in between go off in one direction or another, but it always comes back to this. So it was time to come back to this."

Ragged Glory sounds like one of Young's most positive statements. There's a couple of reassuring love songs and the tongue-in-cheek humor of "F*in' Up", which he swears is being considered for a single. "It will certainly be a video. Maybe we'll do something digitally with the vocal so they can play it."

Young considers this album the emotional flipside to Tonight's the Night—the harrowing 1975 LP inspired by the OD of original Crazy Horse guitarist Danny Whitten. "I still laugh when I hear that record. That's how I always react to records that blow peoples' minds—if I can laugh when I'm listening, I love it. When I'm in the right headspace, that one still sounds good. "I think Ragged Glory may stand

alone in my work the same way Tonight's the Night does. It's very positive but it has the same edge. Both sides are represented in this one, and they kind of vibrate. There isn't one record I've made that this one can't stand up beside. I'm expecting people to bring it back to the store, because they'll feel guilty about getting so much on one record."

TOWER'S TOP 25 ALWAYS ON SALE!

COMPACT DISCS **11.99** (REG 13.99 & 14.99)
 CASSETTES **7.99** (REG 8.44, 9.44, 10.44)

SLAUGHTER SIXA D. 1978 Chrysalis	JEFF HEALEY HELL TO PAY 1977 Chrysalis	NEIL YOUNG & CRAZY HORSE RAGGED GLORY 1990 Reprise	DAN FOGELBERG THE WILD PLACES 1978 Columbia
SINEAD O'CONNOR SINEAD O'CONNOR 1987 Chrysalis	BLUE TEARS 1987 Chrysalis	TWIN PEAKS SDTK. SOUNDTRACK FROM TWIN PEAKS 1990 Columbia	TOMMY CONWELL 1987 Columbia

TOWER RECORDS

HONOLULU
 611 & 638 Keeaumoku
 Across Kapiolani From Ala Moana Center

AIEA
 Pearl Kai Center
 Across From Pearlridge Shopping Center

OPEN 9AM TO MIDNIGHT - 365 DAYS A YEAR
 SALE ENDS OCTOBER 10, 1990

MUSIC VIDEOS • VIDEO SALES & RENTALS!

Learn About Lupus

If you are one of the nearly 500,000 people in the United States with the chronic disease, LUPUS, you can find help through the LUPUS FOUNDATION OF AMERICA, INC. Over 100 chapters throughout the nation reach out to offer information, referral, and emotional support to those with this inflammatory disease.

Contact
LUPUS FOUNDATION OF AMERICA, INC.
 1717 Massachusetts Ave., N.W.
 Suite 203
 Washington, D.C. 20036
 or consult your telephone directory for the chapter nearest you.

Marine earns medal for heroism

Story and photo by Lt. Col. G. Poznar Smith

Ask Sgt. Jimmie Potter if he did anything extraordinary Jan. 22, and he'll tell you he was just doing his job. But at least three Marines will tell first hand that there was nothing mundane about his efforts that night.

For his part in a daring rescue of three Marines from storm condition seas almost nine months ago, Potter was awarded the Navy and Marine Corps Medal Sept. 19 by Station Commanding Officer Col. R.R. Critzer at a morning Colors ceremony.

As part of the SOMS Search and Rescue duty team that night, Potter and fellow SAR team members, Capt. Paul Borrer, Capt. Eugene McBride and Cpl. Brian Johnson were flying in the Molokai Channel where MAG-24 helicopters were practicing carrier-deck landings.

It was dark; the clouds hid the moon and stars. Under a heavy downpour, an HMM-364 CH-46 helicopter splashed into the high seas. The SAR bird, four or five hundred yards from the splash-down site, responded immediately, locating two of the four crewmen upon arrival by the strobelights on their vests.

Acting as the SAR rescue swimmer, Potter was lowered by hoist operator/crew chief Johnson into the turbulent waters near the two survivors, who were in a life raft.

"I hooked up the first survivor and they took him up," said Potter. "When the hoist came down again, I hooked up myself and the second Marine and went up."

Potter went back into the water after the SAR crew spotted a third survivor. "It was real dark and as bad as it could be," recalled Potter, a 27-year-old Marine of eight years. "There were 15-foot whitecaps and the bird had rolled over. All you could see was the underside."

With three of the four crewman safely in the SAR helicopter, the rescue team continued to search for Cpl. Kenneth Brown. His body was never found and he was presumed lost at sea.

The SAR team flew the

survivors directly to Tripler Army Medical Center. Potter treated the Marine's injuries, broken bones and cuts, on the way. After safe delivery to Tripler, the SAR team headed back to the scene to continue the search for Brown.

Potter, a crew chief by trade, has been in Search and Rescue for more than three years now, but this was the first time he used his training for an actual rescue. He said he never felt any fear nor held any reservations about going into the water after his fellow Marines.

"I was just doing my job," he said "It seemed like it took a long time to get to the crash scene. I was actually pretty anxious to get down there."

Not as anxious as the three survivors, who can thank the stars to this day for a heads-up SAR team from SOMS. All three of the survivors, Capt. Bryce Cameron, Lt. Michael Busansky, of MAG-24 and Cpl. Denver Lambuth, HMM-265 are still on the Air Station.

Each of the three other SAR Marines received Air Medals in August for their efforts.



Sgt. Jimmie Potter receives the Navy and Marine Corps Medal from Col. R.R. Critzer, Station Commander.

ONE HOUR SERVICE

KAILUA OPTICAL
Has One Hour Service On Most FT 28 and Single vision Lenses.

CONTACTS from \$59
COMPLETE GLASSES from \$69
OVER 1,000 FRAMES

Kailua Square • Ulunui Street • 282-6191

Luke Jones, Owner

MEET FUN RIDES

- * Parties
- * Grand Openings
- * Sponsor Events
- * Donorals & Games
- * Fundraising Done on percentage basis
- * Tent Rentals & Games
- * Popcorn, Cotton Candy, Snow Ice, Soft, Ride Tickets avail

CAROUSELS \$100 plus delivery for 4 hrs

PH. 671-3661

WHEN TRYING HARDER HASN'T HELPED... TRY HYPNOSIS

FOREVER TRIM A LIFE CHANGING WEIGHT CONTROL PROGRAM. A GUARANTEED STOP SMOKING PROGRAM.

CALL FOR FREE INTRODUCTORY TAPE

JOHN DAUGHTERS, M.S. Certified Hypnotherapist

JOHN DAUGHTERS, M.S. 262-5911

Totally Tropical

FUTONS & FRAMES

end of summer

BLOW OUT SALE!

All Futon & Frame Sets Reduced To Clear!!!

4-Position Lounger
Sofa
3 Months No Interest Financing Available

KAILUA 326 Ulunui St. 282-9312

HONOLULU 135 Sheridan St., Bldg. B 955-3478

LOSE YOUR FAT EASIER!

LOSE 4-14 PERMANENT INCHES IN 1 HOUR!

EUROPE'S #1 CELLULITE BODY TREATMENT

WHAT A BALANCED DIET & EXERCISE IS UNABLE TO DO:

Beneficial Contouring HERBAL BODY WRAPS will: Reshape Problem Areas • Eliminate Toxin Waste & Cellulite • Restore Circulation & Elasticity • GREAT FOR POST-PREGNANCY & STRESS RELIEF

THIS IS NOT A WATER LOSS!

25% OFF 3 WRAP SERIES (1 Wrap Per Week) WITH FREE FACIAL TREATMENT

Limited Appointments Available, Book Today, Expires 10/13/90.

FREE VIDEO DEMONSTRATION

236-4400

KANEOHE 48-988 Kono Hwy., #106 American Savings Bank Bldg.

LIFE STYLES BEAUTY HEALTH CENTER

KARON KANESHIRO, TECHNICIAN & DISTRIBUTOR OF BENEFICIAL PRODUCTS

MAG/From A-1 are so high, the air is less dense than normal," said Cpl. John Martinez, a CH-53D crew chief from the HMH-462. "This required the bird to put out more power because the blades have to take a bigger bite out of the air to get the same desired lift capability as in a cooler climate. But it's not that big of a problem for us."

Another challenge the helicopter pilots face is the land environment.

"This place is like Twentymine Palms without the mountains," said Capt. Kevin Kelley, a CH-53D pilot from HMH-462. "It's perfectly flat with no distinct terrain to navigate. What it comes down to is relying on basic pilot skills."

A few helpful reference points the pilots are using to enhance navigation are roads, power lines, and pipelines. "Normally, we try to avoid power lines because they're hazardous obstacles," Kelley said. "But now we can use them to our advantage for navigation."

Whether it be crew chief, mechanic, pilot, administrative worker, or any other role that supports the MAG, the ability to adapt and adjust to the new environment hasn't been a problem for the I MEF rotary wingers during their deployment from one side of the globe to the other.

PEEL-A-GRAM STRIPPING TELEGRAM

\$5.00 OFF w/this coupon

955-3799

Male & Female

From G to XXX & Bathub Shows

Are you in DEFAULT?

On a Student Loan?

If you're in default on a guaranteed student loan (FSL, GSI, Stafford, SLS, or PLUS loan), you may be eligible for a special program that lets you pay it back without penalty or collection charges.

You must pay your loan in full by August 31, 1990 to take advantage of this special program. For information, call the guarantee agency that holds your loan, or call the U.S. Department of Education's toll-free number:

(800) 333-INFO

TOWER TRIBUNE

ALL BLACK TOP COMPACT DISCS & CASSETTES ARE ON SALE NOW!

BLUES .a. RAMA

"New Orleans' Black Top Records has been one of the most valuable blues imprints of the '80's, consistently serving up hot and tasty albums by a wide range of both old and new blues acts."

Blues .a. Rama Sampler 75 minutes of parrotail blues, soul & R'n'B from the Black Top family of artists. **6.99 CD 4.99 CASS**

EARL KING Sexual Telemetry **11.99 CD 7.99 CASS**

BOBBY RADCLIFF Dressed Top Short **11.99 CD 7.99 CASS**

RONNIE EARL & THE BROADCASTERS Police of Mind **11.99 CD 7.99 CASS**

OLDIES THE BEST OF THE GREATEST FROM CURB RECORDS!

IKE & TINA TURNER GREATEST HITS **8.99 CD 4.99 CASS**

EVERLY BROTHERS GREATEST HITS **8.99 CD 4.99 CASS**

NIFFY GRITTY DIRT BAND **8.99 CD 4.99 CASS**

NIFFY GRITTY SOUTHWEST BAND GREATEST HITS **8.99 CD 4.99 CASS**

Plus many more to choose from!

SALE ENDS OCTO 10, 1990

OPEN 9AM TO MIDNIGHT • 365 DAYS A YEAR

TOWER RECORDS

PAID ADVERTISEMENT

BLUES

Houston Blues Vets Supercharge Gulf Coast Blues

Gulf Coast Blues, Vol. 1 (Black Top) features veteran Houston blues talents that include saxophonist Grady Gaines, J. "Guitar" Hughes, pianist/songwriter Teddy Reynolds, Anson Funderburg and Crescent City bass great George Porter, Jr. But the big find is the husband/wife team of Clarence Hollimon and Carol Fran. Hollimon is an excellent guitar stylist.



but Fran is a virtuosic, supercharged singer with impressive credentials.

West Coast harmonica hero William Clarke's sixth recording, *Howlin' Like Hell* (Alligator), should turn his underground buzz into wide acclaim. He's a fine songwriter and vocalist but his hurricane-force harmonica carries the show.

Way Down South (Antone's) is legendary blues guitarist Malt Murphy's first solo album; a basic sampler of his wide range of styles, from razor-sharp slide work to strutting shuffles.

Koerner, Ray and Glover introduced countless fans to acoustic folk blues in the early '60s. Now, Dave "Snaker" Ray and Tony Glover have returned with *Ashes in my Whiskey* (Kluge Trade), their first studio recording in 25 years. The dozen tunes feature Ray's bedrock blues voice, deceptively simple guitar and Glover's thoughtful harp, recalling an era of front porch storytelling blues popularized by Sonny Terry and Brownie McGhee.

—Michael Point

ISSUES

Rarest Elvis and Vintage C&W for Collectors

In 1953 Elvis Presley plunked down four bucks and cut two songs as a gift to his mother. Long thought lost, those acetates turned up with a childhood friend two years ago. "My Happiness" leads off *The Great Performances* (RCA) and offers a glimpse at Elvis' emerging talent. RCA has saved the second side for another disc.

Rhino Records is amassing a commendable vintage country music catalog. Its recent Billboard Top 10 Country Hits series features classics like George Jones' "White Lightning" (1959), Marty Robbins' "El Paso" (1961), Faron Young's "Hello Walls" (1961), Hank Snow's "I've Been Everywhere" (1962) and Skeeter Davis' "The End of the World" (1963). You also get the first taste of Buck Owens' "groov" Capitol hits on CD.

Other stuff: Super K's Bubblegum Explosion (Sequel) is a 24 track collection of hits by the 1910 Fruitgum Company and Ohio Express. EMI's "legendary Masters" series now includes My Blue Heaven—The Best of Pat Dom-



ino, the first decent U.S. Pat Dom CD anthology.

Need a great Halloween collection? Try DCC Compact Classics' *Monster Rock 'n Roll Show*, featuring "The Monster Mash," Bo Diddley's "Bo Meets the Monster," Screamin' Jay Hawkins' "Feast of the Mau Mau" and more, including bits from classic horror movies.

—Jeff Tamarkin

Friends of Mokapu discuss Desert Shield effects

By LCDR. G. Poznar Smith

Friends of Mokapu, a group of Mokapu Elementary School parents, teachers and students, held their first meeting of the year Sept. 13. The main topic was Operation Desert Shield.

More than 20 people gathered in the school library, including two Mokapu Student Council officers, to

discuss the effects of the deployment of Kaneohe Bay Marines and sailors to Saudi Arabia.

Friends of Mokapu (FOM) President Chris McLeod introduced Owen Norton and Mimi Tracey from the Family Services Center, who offered tips and advice on situations that have occurred and may continue because of the

sudden deployment.

Both Norton and Tracey talked about the numerous organizations aboard the Air Station that are mobilizing their assets to deal specifically with the situation. "Family Services is right now coordinating with the other service organizations," said Norton.

He also offered helpful ad-

vice, such as being honest with your children and answering their questions, and added that sometimes it's hard to recognize the signs of stress in youngsters. "For instance," Norton said, "a lot of times when the father leaves, he tells the son, 'You're the man of the house now — take care of the family.' Sometimes they

misinterpret this and put a lot of pressure on themselves."

Other topics discussed included yearbook production, fundraiser plans, recycling efforts and the need for volunteers. The next FOM board meeting will meet Oct. 11 at the school and is open to everyone.

\$100 OFF*

**any purchase of \$3.95 or more when you mention our ad!*

BOOKSHELF

books, music, cards & more...for less

We are open 7 days to purchase your books & music!

Alkali Park Shopping Center **254-5544**

Limit one per customer. Offer ends 10-17-90

the **REGULATION**

Barber & Hairstyling Haircuts*

by appointment or walk-ins welcome

Active Duty Military \$5.75
Civilian \$7.25

COSMETIC TATOOWING BY APPOINTMENT

254-4111 **except with state or back receives FREE haircut* 841-8414

25 Kaneohe Bay Dr. (Alkali Shopping Center behind Expresslane) 1435 Middle St. (Kaneohe) Outside Patch Gate Fort Shafter

7 Days A Week 8am-9pm

Lanes


Baseball Cards and Comics

262-0597

MON-FRI: 1-7
TUE: CLOSED
SAT: 10-5
SUN: 11-4

418A Kuulei Rd. • Kallua (behind McDonald's)

Former Prosecutor/
Experienced Trial Lawyer



JAMES M. PALLETT
ATTORNEY AT LAW
Special Emphasis on D.U.I.,
Criminal Defense, and
Personal Injuries

(808) 528-3468

Pioneer Plaza
900 Fort Street, Suite 1777
Honolulu, Hawaii 96813

LIFECO

TRAVEL SERVICES

A FULL SERVICE TRAVEL AGENCY — OPEN TO MILITARY AND CIVILIAN

- *AIRLINE TICKETS
- *HOTEL RESERVATIONS
- *TOUR PACKAGES
- *AMTRAK
- *CRUISES
- *CAR RESERVATIONS
- *INTER-ISLAND RESERVATIONS
- *MILITARY & KAMAAINA RATES

LOCATED TO SERVE YOU AT:

CAMP H.M. SMITH — AIEA 487-1567
KANEOHE BAY AIR STATION 254-4554
KANEOHE BAY POST EXCHANGE 254-3581

Lex Brodies

30-MINUTE TIRE INSTALLATION!

(Save time with an appointment!)

MICHELIN

BECAUSE SO MUCH IS RIDING ON YOUR TIRES.



We know there's so much riding on your tires. That's why we want to help you select the right Michelin radial to give you long mileage, traction and quality.

PREMIUM QUALITY
50,000 MILES (AVG.)

165 x 13 XZK® BLK
NO SERVICE PRICE*

\$44.00
FITS THESE CARS

CHEVETTE DODGE
HONDA SUBARU
MAZDA TOYOTA
NISSAN PLYMOUTH
(AND MANY OTHER CARS)

185/70 X 13 MXL BLK
NO SERVICE PRICE
\$57.00
FITS THESE CARS

AMC MAZDA
BUICK NISSAN
PLYMOUTH OPEL
DODGE FORD
FIAT TOYOTA
HONDA VOLKSWAGEN

185/70 X 14 MXL BLK
NO SERVICE PRICE
\$61.00
FITS THESE CARS

VOLVO TOYOTA
MAZDA PEUGEOT

195/75 X 14 XZ4 WHT
NO SERVICE PRICE
\$70.00
FITS THESE CARS

BUICK NISSAN
CHEVY PLYMOUTH
FORD OLDSMOBILE
MERCURY PONTIAC
MERCEDES TOYOTA

215/70 X 15 XZ4 WHT
NO SERVICE PRICE
\$81.00
FITS THESE CARS

CADILLAC LINCOLN
DODGE MERCURY
FORD JAGUAR

MICHELIN

* Add \$15 for full service which includes:

1. Expert tire mounting
2. New valve stems
3. Computer balancing
4. Computer alignment check
5. Computer tire records

Plus back-up service

1. Tire inspection reminder
2. Rotation when needed
3. Expert tire repair
4. Rebalancing when needed
5. Computer alignment checks

There is no better tire program in Hawaii. Come see us!

The above prices are firm until Sat., September 29, 1990

*If your size is not listed above, please call us. We can help you.

Lex Brodies
TIRE COMPANY

MON THRU SAT, 8 a.m. to 5 p.m.
Waipahu Honolulu
95-101 Ferguson Way 791 Queen St.
(near to Safeway) Ph. 871-4561 Ph. 536-9381

TOWER TRIBUNE

NEW AGE

The Ambience and Melodic Grace of the Sufis

JVC's immaculate digital exposition, Mystic Flutes of the Sufis, has the ambience, melodic grace, transcendental beauty and supreme sense of reflection that have become tenants of the new age genre. The breathy ruminations of the ney whistler seductively of long-forgotten secrets and esoteric knowledge. It's like listening to a mirage.

Cellist Bob Kindler has long been fascinated by Indian, South Pacific, jazz and classical music. He merges all these styles on his captivating new release Tiger's Paw (Global Pacific). The musicianship and compositional vitality displayed on this album are impressive.

Western artists John McLaughlin and Carlos Santana have embraced Sri Chinmoy's musical approach to spirituality. Swiss multi-instrumentalist Alap Letzer has also been inspired by Chinmoy's artistic vision. Using electronics

as a contrasting background for guttural, flute, tabla, harmonium, shruti and drone instruments, Letzer deftly interprets Chinmoy compositions. The Source of the Music and Eternity's Sunrise (Heart Music, cassette only). The music flows with serene melodies that combine a joyful sense of spiritual awakening with pristine and inventive instrumental technique. Heart Music also features Chinmoy himself on the introspective Flute Music Meditations and The Dance of the Light.

—Linda Kolesno



NEW ALTERNATIVE

FROM PRIVATE MUSIC

Leo Kottke
11.99 CD 7.99 CASS

Kate & Anna McGarrigle
11.99 CD 7.99 CASS

Kristen Vigard
11.99 CD 7.99 CASS

WORLD MUSIC

Invigorating Sounds from the Corners of the Globe

Willie Colon revolutionized Latin music in the '60s. His new album, Color Americano (CBS Discos), with its real life tales of love and sorrow, looks at the ironic racism American Latinos face in their home country, and at the problem of homeless and abused children that roam big city streets.


Kotoja's self-produced debut, Freedom is what Everybody Wants (Inner Spirit), is a wild hybrid of Afro/Caribbean styles like highlife, juju, soca and reggae.

Also recommended: Pop Rai and Rachid Style - Rai Rebels, Vol 2 (Earthworks), featuring tracks by Algerian stars Cheb Khaled and Cheb Sahrrou; Mama (Mozambique) (Realworld); Mozambique's Epyrhuro, a beautiful collection of songs ranging from gentle acoustic chants to Confucius rhumba; Yan, a disc of soothing Chinese folk by The Guo Brothers & Shung Tian and Ya Habi; a collection of Qawwalis from The Sabri Brothers, Pakistani practitioners of trance induc-

ing devotional music.

Three discs which will appeal to folk, new age and world music fans are Desert Dance by Native American flautist R. Carlos Nakai; Recurring Dream by Sylvan Grey, a woman who plays the kantele, a traditional Finnish zither and Fire Dance, a fusion of Turkish, Middle Eastern and jazz styles by Brian Keane and Omar Faruk Tekbilek.

—J. Post



WORLD BEAT

PAUL SIMON
The Rhythm of the Samba
11.99 CD 7.99 CASS

Continuing his successful exploration of world music featuring Brazilian and African players plus Steve Gadd, Michael & Randy Braker, Adrian Belew, J.J. Cale, Nana Vasconcelos, Hugh Masakela & LadySmith Black Mambazo... a Brazilian foundation with African accents.

GILBERTO GIL
One of Brazil's most important modern composers/singers and political activists leaves the listener swaying on their feet or humming a sweet blues melody after listening to his new release "O ETERNO DEUS MEU (DANCA)", 1990 marks the return of Gilberto Gil.
11.99 CD 7.99 CASS

YOUSSOU N' DOUR
Poised to show America what the rest of the world has known for years, that he truly is the voice of Africa and the first bona fide star to emerge from the Third World since the late Bob Marley, "SET" captures a "live" fresh feel from his band while showing off his haunting multi-colored voice.
11.99 CD 7.99 CASS

OPEN 9AM TO MIDNIGHT • 365 DAYS A YEAR SALE ENDS OCTOBER 10, 1990

TOWER RECORDS

PAID ADVERTISEMENT

Total Quality Leadership

President Reagan signed Executive Order 12837, "Productivity Improvement Program for the Federal Government" April 27, 1986.

In this order, the president established a government-wide program of improving the quality, timeliness and efficiency of service to the public and to achieve the goal of an annual average increase in productivity of 3 percent in appropriate functions.

To further the president's productivity improvement program, organizations have been designated as Quality Improvement Prototypes. Prototype organizations have adopted Total Quality Management or Leadership (TQM) as a new approach to improving quality and productivity.

Prototype organizations demonstrate an extraordinary commitment to continuous improvement, focus attention on satisfying their customers and establish high standards for quality, timeliness and efficiency.

One organization designated as a Quality Improvement Prototype is Naval Aviation Depot, Cherry Point, N.C. Faced with pressures of continued competition (commercial contractor and other depots) and reduced operating budgets, NAD Cherry Point adopted TQM as a new approach to improve effectiveness, efficiency and productivity by applying quality management techniques and methods.

At NAD Cherry Point, providing timely and quality service for its customers was targeted as one critical area for improvement. They determined that improved customer products and services would require constant attention to three fundamental areas:

- Quality
- Productivity
- Cost

This meant getting the work done right the first time, on schedule and at minimal cost.

Top level management commitment is crucial to the success at NAD Cherry Point as well as application of these fundamental elements of TQM:

- Long range planning
- Employee involvement
- Customer involvement
- Measurement
- Training
- Employee awards and recognition

With TQM as the driving force, NAD Cherry Point has brought improved quality to the repair of sophisticated aircraft, engines, and associated aeronautical components. Improvement was achieved through manage-

ment leadership, better communication among managers and intensive training in statistical process control and other analytical skills for assessing improvement in work processes.

Quality improvements resulted in:

- The cost of an engine repair was reduced as much as \$3,000 between January and September 1987.

- The average cost of the repair of an engine component dropped as much as \$7,000 per unit from 1985 to 1987.

- Standard repair and maintenance on one type of aircraft dropped as much as \$65,000 from January 1986 to September 1987.

- Through the gainsharing incentive, employees were

able to share in the savings produced by these cost reductions. Each one of the 3,100 civilian employees received a payout of \$1,385 during FY 88.

- Between FY 86 and FY 87, direct labor rates were reduced by more than 7 percent.

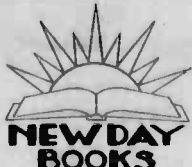
- Computerized manual accounting operations resulted

in labor cost savings of \$23,000 per year.

The accomplishments of NAD Cherry Point prove that emphasis on quality and continuous improvement in the federal sector leads to increased productivity.

Their efforts, as one of six depots of the Naval Air Systems Command, have contributed to the depot's achieving a 5.3 percent

productivity improvement between 1986 and 1987 and they expect to achieve the president's 3 percent average annual productivity improvement goal. This kind of organization serves as a model for the rest of the government—showing how a commitment to quality leads to better services and products, lower costs and more satisfied customers.



NEW DAY BOOKS

A POWER CENTER FOR YOUR PERSONAL GROWTH with a wide selection of books, tapes, videos & gift items.

SPIRITUALITY PHILOSOPHY RECOVERY PSYCHOLOGY SELF-HELP CHILDREN'S NEW AGE WOMEN'S STUDIES ... AND MORE!!

HOURS:
TUES. & THUR. 10AM-7PM
WED. FRI. & SAT 10AM-5PM
SUNDAY 11AM-2PM
CLOSED MONDAY

KAILUA TOWN CENTER
next to Smith's
108 MEKILI STREET
262-7456

BARGAIN AIRFARES
732-5533


SEATTLE	PORTLAND	OW	RT
LOS ANGELES	SAN FRANCISCO	SAN DIEGO	\$260 \$389/\$407
NEW YORK	WASH DC	MIAMI	\$139 \$249
		PITTSBURG	\$270 \$479

Phoenix	\$320	Manila	\$734	London	\$1084
Salt Lake	\$484	Saoul	\$614	Paris	\$1084
Kansas City	\$489	Taipei	\$716	Zurich	\$1152
El Paso	\$569	Bangkok	\$744	Frankfurt	\$1078
Tucson	\$358	Hong Kong	\$714	Brussels	\$1088

Restrictions advance purchase penalties apply. Weekend travel limited availability. All fares subject to change without notice. Call for other destinations.

ROYAL ADVENTURE TRAVEL
2818 Harding Avenue, Suite 101, Honolulu, Hawaii 96815


Start feeling good about your body...



we'll help you turn things around.
M-W-F 8:30am-9:30am
KMCAS-Family Gym
T-TH 6:00pm-7:00pm
Louise Hunt
Certified Instructor
239-7342

Jazercise
Every time you move around, you're doing something good.

THE FABULOUS 50's



THE LOVE NOTES
recreate the legends of rock & roll--LIVE!
WITH BRUNO
The world's youngest Elvis impersonator who's taking Walkiki by storm. Plus a salute to all-girl vocal groups by the HIGH NOTES.
Showtimes: 8p.m., except Tuesdays. \$10 Show charge, Kamaaina \$7.50, \$5 children under 12. Two drink min. Special dinner packages available.
For reservations, call the Love Notes Hotline at 922-6477.
Don't miss Bernadette & the Sunshine Company, 9:45p.m.-1:30a.m. Tues. through Sat.
Complimentary validated or valet parking.

Esprit NIGHTCLUB
Sheraton Walkiki Hotel
The hospitality people of TIT

WINDWARD DUI DEFENSE
BODE A. UALE, Esq.
Deputy Public Defender
FREE CONSULTATION
Office of
4000 PM Highway
KANEHOE HILLS
235-4000

Helping people worldwide.



INTERNATIONAL SERVICE AGENCIES
1-800-638-8078
AMERICANS... MAKING A WORLD OF DIFFERENCE!
Ch...



TOWER TRIBUNE

BLANK AUDIO TAPE SPECIALS

SONY



LOW COST HIGH BIAS
UR-90 FIVE BRICK
8.88
LESS THAN 1.78 PER TAPE



LOW COST METAL
METAL SR-90 THREE PACK
WITH SONY HEADPHONES
9.99
YOU GET THREE GREAT SOUNDING TAPES PLUS A PAIR OF QUALITY SONY HEADPHONES

MEMOREX



NORMAL BIAS
CIRÉ I 50/100 THREE BRICK
2.49/2.88
JUST 83-88 PER TAPE



LOW COST HIGH BIAS
CIRÉ II 90/110 THREE BRICK
4.09/4.49
JUST \$1.37/\$1.50 PER TAPE

SALE ENDS OCTOBER 10, 1990

FREE XLII-90



FREE NEON WATCH



FREE XLII-90



FREE WAIST POUCH



MAXELL

NORMAL BIAS
UR-90 TEN PACK W/FREE XL II-90
9.99
LESS THAN A 1.00 PER TAPE. PLUS A FREE XL II-90.

FREE NEON WATCH!
CAPSULE UDX-II 100/METAL CAPSULE 100
SIX PACKS W/FREE NEON WATCH
9.49/12.99
LESS THAN 1.60/2.17 PER TAPE. PLUS A NEON WATCH ABSOLUTELY FREE!

HIGH BIAS
XL II-90 FOUR BRICK W/FREE XLII-90
9.99
LESS THAN 2.50 PER TAPE. PLUS A FIFTH TAPE FREE!

FREE WAIST POUCH!
XL II-S 90 SIX PACK W/FREE WAIST POUCH
16.99
LESS THAN 2.84 PER TAPE. PLUS A WAIST POUCH ABSOLUTELY FREE!

METAL
MX-90 THREE BRICK
9.99
JUST 3.33 PER TAPE.

OPEN 9AM TO MIDNIGHT - 365 DAYS A YEAR

TOWER RECORDS

HONOLULU
611 & 638 Keesaukoku
Across Kapiolani From Ala Moana Center

AIEA
Pearl Kai Center
Across From Pearlridge Shopping Center

MAKING VIDEOS • VIDEO SALES & RENTALS!

'House of Hazards' focuses on fire safety

The Federal Fire Department is reminding families to be on the lookout for fire hazards in the home. This year's theme is "Make Your Home Fire Safe: Hunt For Home Hazards."

Chief Lawrence Gonzalez of the Fire Prevention Division. "We are going into the communities to make this message available to everyone."

Some of the things we want people to keep in mind are:

- Make and practice a fire escape plan for their families, taking care to provide a way out for all members of the family and establish a meeting place once everyone is outside. Plan at least two ways out of each room. Once you are out, do not return.

- Keep smoke detectors in good working order. Test them periodically to ensure they work properly. If your detector is not working, report it to the housing office

trouble desk or call the Federal Fire Department.

- Post emergency numbers next to the telephone where they can be seen and used immediately if needed. Always let the babysitter know they are there.

- Don't leave cooking unattended for any length of time. Turn off the stove if the phone rings, even if you go to the bathroom, and especially if you go next door for "just a minute."

- Remember to remove all fire hazards from the home and practice fire safety every day.

If you have any questions concerning Fire Prevention Week activities or fire prevention and protection in general, call the Fire Prevention Division at 471-3916.

Fire Prevention Week is Oct. 7-13 and this year's focus is on preventing fires in the home by making occupants aware of the many things that could start fires.

The Federal Fire Department's Fire Prevention Division is sponsoring the "House of Hazards." The Air Station's "House" will be at 1981 A Harris Circle, Oct. 9-12, from 10 a.m. - 6:30 p.m.

"Our goal is to show as many people as possible what fire hazards really are," said

Make your Place Firesafe:

Fire Prevention Week
October 7-13, 1990

WE KNOW THE IMPORTANT THINGS IN LIFE DON'T COME WITH A PRICETAG.

Each year more than 19 million boys and girls receive a gift far more valuable than money can buy—a gift filled with pleasure, education and experience.

Through The Salvation Army's summer camp programs, children from lower-income families are given the opportunity to encounter nature face to face while developing friendships, learning new skills and building confidence. These are priceless gifts that last a lifetime—and it's your support that makes this possible.

Sharing is Caring

SUDDENLY HAWAII'S MORE FUN

in a Snazzy Convertible

\$99 3-DAY SPECIAL Mustang Convertible or similar. Oahu, Maui, Kauai & Hawaii. Valid Nov-7/11/90 and 8/27-12/18/90. Unlimited Mileage.

From **\$89** Economy Manual Car A WEEK (Oahu, Maui, Kauai, Hawaii & Molokai). OAHU: Valid Nov-7/11/90 and 8/27-12/18/90. OTHER ISLANDS: Valid 1/15-7/14/90 and 8/27-12/18/90.

Loss Damage Waiver is an optional additional charge of **\$10.99** per day.

Loss Damage Waiver is an optional additional charge of **\$12.99** per day.

Budget rent a car

See your 922-3600 travel agent or call

RESTRICTIONS: Specials are non-transferable subject to rental requirements and car availability. Excludes services, taxes, and optional items are extra. Weekly rate for 6 and 7 day rentals. Minimum rental period not met, higher daily rates apply. Maximum 7 day rate, slightly higher for additional low periods. Car must be returned to rental location or drop charges apply. Budget features include library and other fine cars.

A BRILLIANT PROPOSAL

She's wonderful, unique, special. She's a woman who deserves nothing less than a diamond. The House of Adler suits our military in Hawaii.

Come in today and we'll help you select just the right diamond to fit your budget at the most affordable terms possible.

Diamond Engagement Rings As Low As \$295

MILITARY ALLOTMENTS AVAILABLE

Easy Inhouse Financing All Major Credit Cards Accepted

House of Adler

THIRD GENERATION DIAMOND CUTTERS

If you are not buying your diamonds from the House of Adler, you are paying too much!

PAN AM BLDG. 11th floor • Valet/Hand Parking • 949-4196
PEARL AND PEARL • 491-8888 • WAIKAPU TOWN CENTER 671-8227

ATTENTION SPONSORS!

12 Good Reasons why you should send your TLA family to us

SPECIAL TLA RATES ARE WITHIN YOUR ALLOWANCE	RESERVATIONS ARE SIMPLE	FREE AIRPORT TRANSPORTATION	AIR CONDITIONED ROOMS WITH COLOR TV
FULL SERVICE RESTAURANT	GUEST LAUNDRY FACILITIES	FREE REGULARLY SCHEDULED NEWCOMER ORIENTATION PROGRAM	SWIMMING POOL
FREE PARKING	CONVENIENT LOCATION TO MILITARY INSTALLATIONS	CAR RENTAL DESK	NCOA Certified Merchant

CALL US NOW!

THE PLAZA HOTEL 836-3636

IRONWOOD RESORTS HAWAII

Holiday Inn 836-0661

KOOLAU PETS Anniversary SALE

COME VISIT OUR NEW LOCATION ON THE LOWER LEVEL NEXT TO J.C. PENNEYS

MARINELAND penquin POWER FILTERS

Overflow window clearly tells when to change filter cartridge. Uni Construction; no separate motor unit, no leaks possible. Comes with most efficient highest quality filter cartridge.

PERQUIN POWER FILTER MODEL 110 **\$46.95**

PERQUIN POWER FILTER MODEL 150 **\$19.95**

Blue & Green PARAKEETS

\$6.95 each

Sale Ends 9/30/90

20% OFF ALL TOPPER BIRD RANCH DIET PRODUCTS

WINDWARD MALL 235-6477

You don't have to be an American to die of a heart attack.

AMERICAN HEART ASSOCIATION WE'RE FIGHTING FOR YOUR LIFE

RUIT HELPS

Armed Services YMCA

The Armed Services YMCA Outreach Office is located on the Air Station, down the sidewalk from the 7-Day Store. For more information and to make reservations, call 254-4719 or 254-4965.

Learner's Permit
Be able to depend on yourself to get where you want to go. Driver's education classes begin Oct. 8 and will run for four consecutive Mondays from 9-11 a.m. A \$10 fee includes the driver's manual and a trip to the licensing bureau for the permit test. Behind-the-wheel instruction can also be arranged.

Benefits and Rights
A military lawyer will present an informative program for all military wives. Know your rights in divorce, custody disputes or child support issues. Learn about your entitlements if you are widowed. Learn what commitments the military makes to you, what can and cannot be done for you and your children. The presentation is Oct. 8, from 9:30-11:30 a.m. The cost is \$1.

Parenting
Carol Pajari, Branch director of ASYMCA Outreach, is offering a seven-week parenting class starting Sept. 28. The classes will be held Fridays from 9:30-11:30 a.m. The free classes are designed to help you enjoy a better

relationship with your children and help them be more responsible for their school work and chores. Registration fee is \$5 for first parent. A free book will be provided.

Wailing Spouses Group
Join this caring, supportive group of family members. Share information, ideas and concerns. There are now two meeting times: Tuesdays from 9:30-11:30 a.m. and from 7-9 p.m. Husbands are welcome. Call to register.

Lamaze Classes
Two new classes begin Oct. 8 and 11. During the six-week class all aspects of pregnancy, labor and deliv-

ery are covered to make the birth of your baby a wonderful experience. Reserve your place by signing up around your sixth month of pregnancy. If you need a Lamaze coach call the Center. Our certified instructor was trained by Dr. Lamaze.

Pregnant Wives' Support Group
Pregnant and husband delayed? Join this group of ladies who know how it feels. Get answers to your questions about pregnancy and childbirth. Share feelings and information. The group will be facilitated by a professional in the field of nursing. The meetings are from 3-5 p.m., Sundays at the Center.

Credit card rip-offs

Local residents are being taken at a rapid clip by mainland telemarketers who are talking them into revealing their credit card numbers and the card's expiration dates, according to the Better Business Bureau of Hawaii.

The BBB always has warned consumers to never give their credit card number to anyone who calls you.

"It's equally dangerous to reveal the expiration date of a credit card," says Bill Smith, of the consumer services department of the Bureau. "And if they ask for the expiration date alone, it means that they already have your card number. Right there, they've got you. It's their license to steal."

The BBB has received dozens of calls from persons who have received such requests from these mainland promoters. Smith remarked that fortunately, most had not complied with the telemarketers' requests. But many had.

"Once they receive a number, that's their authorization to charge to your account whatever amount they wish. It is sometimes difficult to have the charge reversed or rescinded by your bank. If you refuse to acknowledge it and pay up, that fact may easily be entered into your credit record," he said.

He urged people who received such calls to simply hang up the phone or at least check out the source first, with the BBB at 942-2355 from 9 a.m.-3:30 p.m.

Vacuum Cleaner Sewing Machine

TUNE UP (All Makes) Reg. \$24.95 Plus Parts
\$895

- Replace Belt if Needed
- Grease Roller Bearings
- Clean & Check & Adjust
- Adjust All Moving Parts
- Replace Friction System
- Replace Frayed Sides
- Replace Brushes
- Adjust Electrical System
- Measure Suction Efficiency

TUNE UP (All Makes) Reg. \$24.95 Plus Parts
\$895

- Adjust Tension
- Clean Oil Luber
- Replace Fraying
- Replace Feeding
- Adjust Winding
- Adjust Halt
- Adjust Bobbin Winder
- Wash & Test

NEW HOME SEWING CENTER
762 Kapiolani Blvd. 524-6700
Free store front parking (Mauka between Ward & Cooke St.)

HAIR LOSS? THINNING HAIR? BALD?

We have the solution!
STRAND-BY-STRAND
Call Today For FREE Consultation
By Appointment Only

521-9906
Open: M-F 9 am - 6 pm
Sat 9 am - 4 pm

100% Human Hair
Swim, Shower, Play Sports

European HAIR REPLACEMENT
Executive Center 1100 Flahop Rd., Suite 601

UNITED ARMED FORCES ASSOCIATION

MILITARY & FEDERAL EMPLOYEES Automobile Insurance
(Telephone Quotes Available)

254-6977 or 6978

Pali Palms Plaza • Kalaheo Ave. • Kailua
Above Navy Federal Credit Union

Prestige Gold & Diamonds
• Hawaiian Heirloom Jewelry • Jewelry Repairs
• Watches and Accessories

Financing Available Lay-Away NOW for CHRISTMAS!

2 Week Delivery. Hawaiian Jewelry

4mm Bracelet	\$239	Ring	\$ 79
5mm	252		89
6mm	275		105
8mm	365		135
10mm	445		159
12mm	560		199

Specials SET OF THREE (BRACELET • RING • PENDANT)

6mm Set	\$399
8mm Set	\$499
10mm Set	\$599

14K Gold Chain Soldering \$2.00 OFF
Ring Sizing \$2.00 OFF

200 Hamakua Dr., Kailua • Next to Safeway • 262-0088

CARRIERS SEEK VOLUNTARY PAYMENT

Beginning Sept. 27, your Hawaii Marine newspaper carrier will be visiting you to ask for a voluntary payment of \$1.30 for the four-weeks' delivery service from Sept. 28 - Oct. 25.

If you enjoy reading the Hawaii Marine and delivery service is satisfactory, your \$1.30 voluntary payment will reward your carrier for a job well done.

Voluntary payments provide earnings for our enterprising young carriers and make possible supportive functions by the circulation department.

Upon payment, your carrier will give you a receipt that may be used for one discounted classified ad in all of our Sun Press and military newspapers during the dates shown on the receipt.

OKTOBERFEST and REUNIFICATION PARTY

Bavarian Beer Garden
Royal Hawaiian Shopping Center
2301 Kalakaua Avenue 3rd floor

*** NO COVER CHARGE *
Happy Hour All Evening**

Come and taste our **AUTHENTIC GERMAN FOOD and BEER**

Enjoy an evening of **FUN and DANCING** to the **European Dance Band**

6 Hour Parking \$1.50
"The Tyroleans"
922-6535
No Reservations Required

SALE \$52

Post Impressions™ Perm
Reg. \$63 Shampoo, haircut and style included. Long hair and blow-dry, extra, additional charge. Sale price effective through Sat., October 6th.

JCPenney Styling Salon

OPEN SUNDAYS FOR YOUR CONVENIENCE

20% OFF
Paul Mitchell® Hair Care Products
Sale Ends Sat., Oct 6th

SENIOR CITIZEN'S DISCOUNT
Mon., Tues & Wed.
10% OFF
ALL SALON SERVICES

WINDWARD 235-4224

An affair to remember!

Make the most of those special moments...

Special occasions deserve special attention! An elegant, affordable catered event is still within reach at your Army clubs. Arrange your next big event at a location your friends may not have seen...celebrate on the slopes of Diamond Head at the Cannon Club; view your window to the world from the magnificent heights of Tripler and Skyview Terrace; gaze out on the scenic Koolau Mountains at Fort Shafter; or escape to the tranquil serenity of Schofield and Waianae. The choice is yours! Select from a variety of delicious menus or choose hot and cold pupus, and leave the rest to us!

Start planning your memories NOW!

- Halloween
- Birthdays
- Thanksgiving
- Weddings
- Christmas
- New Year's
- Promotions
- Retirements
- Graduations

Call Loke at 624-2345

U.S. Army MWR Hawaii
Making fun affordable!

New temporary MWR hours

Retail Operations

Main Exchange
 Mon-Fri 10 a.m.-7 p.m.
 Sat-Sun 10 a.m.-6 p.m.
7-Day Store
 Daily 6 a.m.-10 p.m.
Convenience Store #301
 Mon-Fri 7:30 a.m.-3 p.m.
 Sat-Sun Closed
Gas Lanes
 Mon-Fri 6 a.m.-6 p.m.
 Sat-Sun 8 a.m.-6 p.m.
Package Store
 Mon-Fri 10 a.m.-9 p.m.
 Sat 9 a.m.-9 p.m.
 Sun 10 a.m.-6 p.m.

Florist
 Mon-Fri 10 a.m.-4:30 p.m.
 Sat 10 a.m.-3 p.m.
 Sun Closed
Video Rental
 Mon-Thu 10 a.m.-7 p.m.
 Fri-Sun 10 a.m.-8 p.m.
Rent-All Center
 Mon-Fri 8 a.m.-4 p.m.
 Sat 8 a.m.-noon
 Sun Closed
Laundry/Dry Cleaner
 Mon-Fri 7 a.m.-6 p.m.
 Sat 10 a.m.-5 p.m.
 Sun Closed
Self Service
 Mon-Fri 10 a.m.-7 p.m.

Sat-Sun 10 a.m.-5 p.m.
Golf Pro Shop
 Mon-Fri 6:30 a.m.-6 p.m.
 Sat-Sun 8:15 a.m.-6 p.m.
Bowling Pro Shop
 Mon-Fri 11:30 a.m.-8:30 p.m.
 Sat 9 a.m.-8:30 p.m.
Multi-crafts Store
 Mon, Tue, Hol Closed
 Wed-Thu 1-9 p.m.
 Fri-Sun 9 a.m.-5 p.m.
Clubs Operations
Officers' Club
 Lunch
 Mon-Fri 11 a.m.-1 p.m.
 Dinner

Thu-Sat 6-8:30 p.m.
Koa Bar
 Wed 4-9 p.m.
 Thu 4-7 p.m.
 Fri 4-midnight
 Sat 6-9 p.m.
Staff NCO Club
Rocker Room
 Mon-Tue 4:30-8:30 p.m.
 Wed-Thu 4:30-9 p.m.
 Fri 4 p.m.-2 a.m.
 Sat 5 p.m.-1 a.m.
Enlisted Club
 Dinner
 Mon-Sat 5:30-9 p.m.
 Bar

Mon-Sat 5 p.m.-2 a.m.
Sun 5-10 p.m.
Pizza Parlor
 Mon-Fri 11 a.m.-1 p.m.
 5-10 p.m.
 Sat 11 a.m.-10 p.m.
 Sun 4:30-8 p.m.
On-base delivery service
 Daily 5-9 p.m.
Food
Flightline Snack bar
 Mon-Fri 6:30 a.m.-6 p.m.
Wiki Wiki Snack Bar
 Mon-Fri 6 a.m.-7:30 p.m.
 Sat-Sun 8:30 a.m.-5:30 p.m.

La Dell
 Daily 10 a.m.-5 p.m.
Support Services
1090 Barber Shop
 Mon-Fri 8 a.m.-4 p.m.
 Sat 8 a.m.-2 p.m.
301 Barber Shop
 Mon, Tue, Thu, Fri 7:30 a.m.-3 p.m.
Enlisted Club Barber Shop
 Closed
Burger King
 Mon-Fri 7 a.m.-7 p.m.
 Sat-Sun 8 a.m.-7 p.m.
MCC Phone Center
 Mon-Sun 8 a.m.-8 p.m.

\$2.00 OFF JACK DANIELS
 with purchase of any 12-pack of beer
 (Must present ad - print only)

BEER on ICE-COLDEST IN TOWN

This Week's Special
STEINLAGER
 \$4.99 (6 pack) Reg \$6.49

Mon-Fri. **LOW Price**
BUD, BUD DRY, BUD LITE
 \$6.99 12 pack cans

LIQUOR + Mon-Thurs: 10-10
 Fri, Sat: 10-midnight
 Sun: 10-10

254-6699

Alkali Park S.C.
 Kailua

PRESTIGE TRAVEL UNLIMITED, INC.
 1513 YOUNG ST. SUITE #102 • PH. #945-7400
 * OPEN 7 DAYS A WEEK • DELIVERY AVAILABLE TO HON. & KAILUA *

	O/W	R/T		O/W	R/T
• LOS ANGELES	\$144	\$247	• SAN FRANCISCO	\$144	\$247
• SAN DIEGO	\$154	\$247	• SEATTLE	\$140	\$298
• MIAMI/NEW YORK	\$274	\$487	• CHICAGO/ST. LOUIS	\$274	\$487
• ALLENTOWN/SUFFALO	\$252		• BOSTON/WASH DC	\$274	\$487
• ALBUQUERQUE	\$202	\$392	• COLO./SALT LAKE	\$438	
• OKLAHOMA/DALLAS	\$487		• PHOENIX	\$174	\$315
• HOUSTON/AUSTIN	\$233	\$405	• ATLANTA/BRACLUSE	\$527	
• TAMPA/ORLANDO	\$527		• BANGKOK	\$878	

Call for Other Destinations

INTER-ISLAND HAWAIIAN ALOHA
COUPONS \$218 Call For Our Special **LOW PRICE**

Some restrictions apply. Prices subject to change.
 OPEN MON-FRI 9:00-7:00 SAT-SUN 9:00 AM-3:00 PM

Gemini
 IBM
SOFTWARE
 Programs for EVERY Interest from \$1.25
The Most Economical Way to Accumulate Some of the Finest Software Available Today.

Amiga
 SHAREWARE
 ATARI ST & 8-BIT
 Take the #19 Bus from Waialeale or the Airport
 Hours:
 Mon-Fri. 12 noon-6 p.m.
 Sat. 10 a.m.-4 p.m.

RETAIL OUTLET
 Mimitz Business Center
 1130 N. Mimitz Hwy., Ste. 144A
 "Look for the Long Red Arming"
533-0259

FAMILY LAW

- Guardianships
- Custody and Child Support
- Separations
- Military Divorces
- Contested and Uncontested Divorces
- Adoptions
- Real Property Division

BURTON CHANG
 Over 15 yrs. experience
HAROLD CHU
 Attorney At Law
 A Law Corporation
 Associates:
 Robert J. Morris
 Russell H. Ando
 Laurie A. Tochiki, of Counsel

WEEKEND and EVENING APPTS. AVAILABLE

Providing Court Services at Affordable Rates

3 Convenient Locations to Serve You
HONOLULU WAIPAHU WAIPIO GENTRY
523-7544 677-5611 671-6491

PERMANENT MAKE-UP
 Lasting Beauty



Regulated by a physician

SPECIAL ON EYEBROWS

- Eyeliner • Upliner • Blush
- Professionally done by hand or by machine
- Makeovers available for the new you

FREE VIDEO DEMONSTRATIONS / ALL WORK GUARANTEED
 1010 S. King B-9 MEDICAL ARTS BUILDING 528-1116 524-5049

Evelyn Gibo
 Licensed Make-up Artist
 from Hawaii

PART-TIME POSITIONS AVAILABLE

The Hawaii Army National Guard is looking for people to fill important Part Time Positions.

If you have no experience, we will train you in any of the following skills:
 Artillery • Engineer • Communication • Mechanic
 Infantryman • Administration • Medical Specialist
 Food Service Specialist • And Many More

If you have prior military service, you may fill any vacancy immediately. Participate with us for 36 days a year, and you may qualify for the following benefits:

- FREE COLLEGE TUITION AT ANY UH CAMPUS (must meet residency requirements)
- THE NEW GI BILL (up to \$5040 for a better Education)
- \$10,000 STUDENT LOAN REPAYMENT
- STARTING PAY ABOVE MINIMUM WAGE
- AND MANY MORE BENEFITS

If you're adventurous and a seeker of new challenges, give us a call today and be a part of HAWAII'S Own and Help us Guard Hawaii!
 CALL YOUR HAWAII ARMY NATIONAL GUARD REPRESENTATIVE TODAY

PEARL CITY 496-0057 • KAPOHUKU 726-3223 • KANEHOHE 236-8344
 WAIHANA 823-3078 • KALIHI 640-8991


OUR CHAMPUS PROVIDERS MEET MANY SPECIAL NEEDS.

CHAMPUS Prime and CHAMPUS Extra have a network of over 500 doctors in a variety of special practices.

that range from orthopedic surgery to clinical psychiatry. Cardiology to dermatology. Located in private practices and health care facilities islandwide.

Special solutions for special needs. One more reason to make The Queen's Health Care Plan your CHAMPUS provider.

The Queen's Health Care Plan



When your Primary Care Physician says you need to see a specialist, you'll be tapped into a plan with over 500 highly qualified health care professionals. In areas of specialization

CHAMPUS SERVICE CENTERS.
 Tripler Army Medical Center, Room 4G 222
 Two Waterfront Plaza, Suite 200, 500 Ala Moana Blvd.

You've Got A Friend
522-7545



Family Services

The Family Service Center has the following free programs to help military people improve their lives. For more information, reservations, or to get on the FSC newsletter mailing list, call 254-1641.

Family Day Care Homes
If you are caring for children in your home for 10 or more hours a week, please register with the FDCO Office. If you are looking for a certified day care provider, be sure to visit the FDCO Office at the FSC.

Playmorning
A free mobile preschool for parents and children (infants to 5 year olds) will be in the following housing locations:

Mondays 2454-2460
Cochran St.
Tuesdays Elrod St. & Cochran St.
Wednesdays Dodson St. & Cochran St.
Thursdays Daly Rd. & Bordelon Ln.

Come to any of these locations from 9-11 a.m. You don't have to live in housing to attend. On stormy days Playmorning meets at the Family Service Center Lani. Babysitters are welcome.

Enlited Spouses' Center
The Enlited Spouses' Center is a new center for spouses and children to get together and share conversation and playtime. This organization is primarily an

emotional/social support group. Located at building 220, next to the Station Theater parking lot, it offers a place to meet, visit, work on projects, and make phone calls. For more information call the Family Service Center or Judy at 254-3063.

Employment Classes
How to get into Civil Service, Oct. 5, 9-11 a.m.
Employment with the Department of Education, Oct. 6, 9-10:30 a.m. (Teachers, substitutes, A Plus staff, clerical, cafeteria, custodial.)
Resume writing Oct. 26, 9-11 a.m.

Coping With Separation
Coping with Separation is

a program designed to help spouses cope with the stresses of deployment. The program will provide an opportunity for you to share your strengths as well as your fears to help you become stronger. Classes will be held Thursdays from 9-11 a.m. Reservations are not required.

New Arrivals Tour
Join other singles and families new to the Air Station for an orientation and tour of the island Oct. 12 from 8 a.m.-4 p.m. Bring a bag lunch. Sada will be provided. Children are welcome. Reservations are required.

Job Bank
Looking for a job? Get a computerized list of jobs

available in the civilian community and get your name into the computer. Employment assistance is also available by appointment.

Sponsorship Briefs
A class for sponsors is given Thursdays from 2-3 p.m. at the Family Service Center. Learn how to make a newcomer's arrival an enjoyable, memorable experience. Reservations are not needed.

Friendship Series
A four-week program to increase knowledge about developing friendships and deepening existing relationships will be held Mondays from 12:30-2 p.m. beginning Oct. 15.

Give Your Graduate Credit . . .

competitive-rate U.S. Savings Bonds.

- High Market-Based Interest
- Guaranteed Earnings
- Tax Benefits



HAWAIIAN PHONE PERSONALS

"Talking" personal ads from local men & women. Now record your own ad using our private voice mail. Other callers record replies for you on our system. No need to ever give out your phone #.

Free info 948-4337 .95/min.
1-900-454-3210



SIDS Alliance

SUDDEN INFANT DEATH SYNDROME

"Today There's Hope Because People Care"

"It's been a mystery for ages—Sudden Infant Death Syndrome—known as Crib Death. But research is beginning to unlock the puzzle, overcome the fear. Today there is hope because people like you care. Care enough to give time. Care enough to give money. Care enough to give love. And together we're finding the answers."

"You can support SIDS research through your COMBINED FEDERAL CAMPAIGN. Designate the SIDS Alliance #0561 on your campaign pledge card."

Yes, send me more information on Sudden Infant Death Syndrome.

Send coupon to: SIDS Alliance, 330 North Charles Street, Suite 203, Baltimore, Maryland, 21201.

Name _____
Address _____
City _____
State _____ Zip _____

PALI PALMS DENTAL CENTER

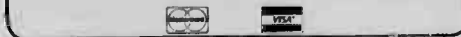
DENTAL SERVICES

General Dentistry • Preventative and Restorative Dentistry
Cosmetic and Esthetic Procedures

INSURANCE ACCEPTED: HDS, HMB, Delta Dental Services (Military), Hawaii Dental Health Plan

Dr. Alan M. Yagawa, DMD
Office: 254-8477
970 N. Kalanui Ave., A-108
Kalihi, Hawaii 96734

Dr. Derek Ichimura, DMD
Office: 254-6884
970 N. Kalanui Ave., A-108
Kalihi, Hawaii 96734



NEIGHBORHOOD LEGAL SERVICES

ATTORNEYS AT LAW • A LAW CORPORATION

Now Available in Hawaii!

WHERE YOU CAN TURN FOR AFFORDABLE HELP!

KALIHI • AIEA • KAILUA CENTRAL PHONE 842-7744
FOR ALL OFFICES
AFTER HOURS & WEEKEND APPOINTMENTS AVAILABLE
CONVENIENTLY LOCATED IN PENLETON TAX SERVICE OFFICES



The AT&T Military Calling Card—makes sharing the experience easy. It connects you to more places worldwide than any other long distance calling card.

• Call from most phones, anywhere. The AT&T Military Calling Card is the least expensive way to call next to direct dialing on the AT&T Long Distance Network.

• You don't need your own phone. It's easy to get the AT&T Military Calling Card. And once you have it, you don't have to reapply every time you move.

• It's free. So order today. Enjoy quick, clear connections, dependable operators 24 hours a day and the most reliable long distance service you can get—with the AT&T Military Calling Card.

To order your FREE AT&T Military Calling Card call:

1 800 551-3131 Ext. 1093

AT&T
The right choice.

Sports Shorts

Volunteers Needed

Volunteers are needed for the World Corporate Games Oct. 6-13. The Games, held in Hawaii, are a celebration of sports that brings business and corporate leaders from around the world together in friendly competition. To volunteer, or for more information, call Franci Gal at 536-1980, or Maj. Pfister at 477-6282.

Hickam Volksmarch and Volksmarch

Hickam Air Force Base will host the annual Hickam Volksmarch and Volksmarch Oct. 7.

All military personnel, dependents and DOD civilians are welcome to participate. Children under 12 must be accompanied by an adult and all pets must be on a leash. Entry fee is \$5 before Tues-

day. The late fee is \$6.

Walkers may start anytime between 7 a.m. and noon, and must finish before 3 p.m. They may choose from two courses; the short course is 10 kilometers and the medium course is 20 kilometers.

Swimmers may start anytime between 9:30 a.m. and 12:30 p.m. and must finish before 3 p.m. The swim is a 300-meter salt water swim at Hickam beach.

Semper Fit Aerobics

New meeting times have been established for Semper Fit aerobic classes. Class schedules are now Monday, Wednesday and Friday at 9 a.m. and Monday-Friday at 5 p.m. for high-low impact; Monday, Wednesday and Friday from 6:45-8 p.m. for low impact; and 11:30 a.m.

high impact for active duty. Water aerobics are offered from 6-7 p.m. Tuesdays and Thursdays at the Station Pool. Cost for dependents is \$18 a month or \$2 a class; cost for active duty is \$8 a month or 50 cents a class. For more information, call Jessica Kirtley at 254-2516.

Rod and Gun Club Meets

The K-Bay Rod and Gun Club will meet Wednesday at 7:30 p.m. at the Skeet Range. Items for discussion will be a pig hunt on Oahu during October, and the bird season

which will open Nov. 3. Military and civilians are invited. For more information, call 254-5739.

New Gym Hours

The new hours of operation for the Main Gym are from 11 a.m.-1 p.m. and 4-8 p.m. Monday-Friday, and from 11-5 p.m. Saturday and Sunday.

Operation Warm-heart 10K

Wheeler Air Force Base will host the Operation Warm-heart 10K run/walk Oct. 6 at 8 a.m. The \$15 registration

fee includes a T-shirt. Team entries are encouraged. For more information call 656-1176 or 656-1159.

Women's Bowling

A Women's bowling league is forming Saturday nights at 6 p.m. For more information call Roxanne Pontius at 254-5218 or Gloria Helkamp at 254-2896.

Station Catfight

The Annual Station Catfight is Oct. 6. Entry fee is \$36 per foursome and does not include green fees or cart. Check in is at 11:30 a.m. for a 12:30 shotgun start.

Awards will be given to the top four teams, closest to the pin, longest drive, and most accurate drive.

Reduced Bowling Prices

Bowl for 75 cents a game at K-Bay Lanes Monday-Friday from 10 a.m.-5 p.m.

Youth Bowling

Registration for the Youth Bowling League is taking place now at K-Bay Lanes. The league will begin Oct. 6 at 10 a.m. For more information call the Bowling Center at 254-5591 or 254-4980.

PIANO LESSONS

247-6010

JOHN SCHOUTEN 45-270 Waialua Place, KANEHOE
EXPERIENCED • PROFESSIONAL • BUT NOT EXPENSIVE

Harry's Cafe

Italian Cuisine

Discover Kailua's Newest Italian Dining!
Nightly From 5:30 til 9:00 Enjoy Our New Selection Of
Appetzfers, Homemade Soups, Fresh Salads, and
Gourmet Italian Dinners Featuring Seafood, Pasta
and Poultry.
Candlelight, Music, Beer and Wine, Cappuccino,
Espresso and Very Tempting Desserts.

*Major Credit Cards Accepted
629 Kailua Road 261-2120
Closed Sundays

IT'S TIME FOR ANNUAL FLU SHOTS

Plus it's a good time to consider PNEUMONIA SHOTS.
Required once only.

Indicated for all patients over 65 and those with chronic illnesses such as diabetes, hypertension and asthma.

We are open seven days a week, 8:00 am to 8:00 pm.
Every weekend and every holiday. No appointment needed.

Our Kailua Center is always fully staffed and equipped to provide complete family medical care as well as urgent care. Also Laboratory and X-Ray Facilities are located on the premises.
All Major Insurance Accepted Including Champus and Medicare

KAILUA FAMILY & URGENT MEDICAL CARE CENTER
Dr. Robert L. Simich & Associates
660 North Kailua Road • Phone 263-4433



Bargain Air

LOWEST AIR FARES TO THE WORLD

LOS ANGELES/ SAN FRANCISCO	FROM	\$250 RT
SAN DIEGO	FROM	\$285 RT
HOUSTON	FROM	\$470 RT
MILWAUKEE	FROM	\$485 RT
FLORIDA	FROM	\$470 RT

MANY MORE DESTINATIONS • RESTRICTIONS APPLY • FARES SUBJECT TO CHANGE

537-2355

1921 KAPIOLANI BLVD., STE. 1030
TA 1152



TREASURES GALORE AT



ONE WEEK ONLY!
Sept. 30 - Oct. 6

SAVE 62%

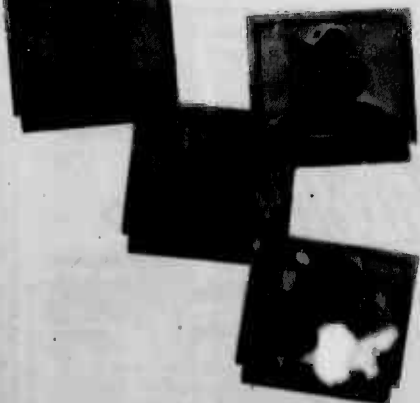
on Selected Merchandise from the
Jewel Palace Stores in Texas and California!
No Finance Charge for 10 Months
with 20% Down on Approved Credit!

SECURITY DIAMOND CONRAD JEWELERS

Als Moana Center • Pearlridge - Phase II

SEE US FOR REVOLVING CREDIT ALL MAJOR CREDIT CARDS EX-CEPT AMERICAN EXPRESS SPECIAL FINANCING NOT INCLUDED

ALIEN SPOTTED 5 TIMES A WEEK!



Now you can see "ALF" 5 days a week!



ALF

Weeknights at 5:30pm

Alcohol-related incidents

and his Air Station decal was removed.

• A Marine was apprehended for DWI after MPs detected alcohol on his breath when he attempted to enter the Station through the H-3 gate. He took the field sobriety test which he failed. He was transported to the MP Department where his intoxilyzer test resulted in a blood-alcohol content of .18 percent. The Marine's driving privileges were suspended

• HPD stopped two Marines when the vehicle they were in was observed going the wrong way on a one-way street. Upon contact, alcohol was smelled on the Marine's breath. The driver was given a field sobriety test which he failed. During the test, the passenger became disorderly and was arrested for disorderly conduct. Both

Marines were transported to the Central Honolulu Police Station where the operator was given an intoxilyzer test which resulted in a blood-alcohol content of .14 percent. Both Marines are being held on \$150 bail and are scheduled to appear in Honolulu District Court. The driver's driving privileges have been suspended and his Station decal removed.

Other incidents

• MPs detained a depend-

ent wife after responding to an anonymous report of a fight in a parking lot. Investigation revealed that a sailor and the dependent were involved in an argument which resulted in a physical altercation. The dependent was processed and released. The sailor declined medical attention.

Nuisance calls

The MP Department has received a large number of

nuisance telephone call reports in the past week. If you are the recipient of this type of call, document the time of the call, any distinguishing characteristics in the caller's voice, any background noises and what the caller said. Then call the MPs to file a report. One thing to remember about these callers is that they are trying to get a reaction from you. If you remain calm and just say that you have the wrong number and hang up,

chances are they will not call back.

Lost and Found

The MP lost and found locker has 46 bicycles, three tires and rims, one VCR, one 22 caliber rifle and misc keys. If you think any of this property belongs to you, please contact Sgt. Boyle at 257-3425. To assist the MPs in identifying unclaimed bicycles, register your bicycle with the pass house at the H-3 gate.

WEINBERG & BELL

ATTORNEYS AT LAW, A LAW CORPORATION

ANNOUNCE THE OPENING OF THEIR NEW NEIGHBORHOOD OFFICE



Jan M. Weinberg and Roy J. Bell III

NEWTOWN SQUARE

98-1247 Kaahumanu, Suite 306-B

487-3211

EVENING & WEEKEND HOURS

PERSONAL INJURY

- AUTO ACCIDENTS
- MEDICAL NEGLIGENCE
- DEFECTIVE PRODUCTS
- INSURANCE LAW
- WORKMEN'S COMPENSATION

- Free first consultation
- No fee unless our clients recover compensation.
- Caring professional involvement of attorneys and staff.
- Trial lawyers who are aggressive, thorough, and ethical.
- All personal injury and accidental death claims considered.

A Law Corporation

1164 Bishop Street Suite 1200

Telephone (808) 523 9477 Facsimile (808) 521 4681

At Alamo, we give the military our complete attention.

NATIONWIDE

Economy Car

\$156⁰⁰ A Week \$26⁰⁰ A Day

Compact Car

\$162⁰⁰ A Week \$27⁰⁰ A Day

Midsize Car

\$180⁰⁰ A Week \$30⁰⁰ A Day

Fullsize Car

\$198⁰⁰ A Week \$33⁰⁰ A Day

Next time you're traveling, let Alamo show you the way. We salute the military with guaranteed low daily and weekly rates, and a fine fleet of General Motors cars all with unlimited free mileage nationwide.

Alamo is committed to serving you with the same pride and dedication that you serve the United States of America.

Sales tax, optional CDW (\$9 per day in CA, \$12.99 per day or less elsewhere), fuel, additional driver fee (except where prohibited by law) and other optional items are extra. Rates higher for renters under age 25. Weekly rates require a 6-day minimum rental or daily rates apply. Availability is limited. Offer valid through March 31, 1991.

We're waiting for our orders from you. For reservations call your Professional Travel Agent or call Alamo at 1-800-327-9633 and request Rate Code M1.



Where all the miles are free



Alamo features the General Motors cars like this Buick Skylark

Mauna Loa MACADAMIA NUTS



Hawaii's Most Treasured Gift

SAVE! 50¢
OFF ONE 3-PACK OF MAUNA LOA ROASTED OR GLAZED MACADAMIA NUTS OR MACADAMIA NUT BRITTLE

COUPON GOOD ONLY AT HAWAIIAN MILITARY COMMISSARIES & EXCHANGES
OFFER EXPIRES OCTOBER 31, 1990

DEALER: Send this coupon to Mauna Loa Macadamia Nut Corporation, P.O. Box 730172, El Paso, TX 79973, and we will pay you back value plus 7% for handling provided redemption is made in accordance with the terms herein. Coupon must be received at the above address by December 1, 1990, in order to qualify for payment. Offer valid where restricted. Cash value 1/200th of 1¢. Any other constitutes fraud. Limit one coupon per point sale. This coupon cannot be used in conjunction with any other coupon offer. Consumer is responsible for any sales tax. 72992 120476

New 3-Pack Gift Box Ready-To-Mail Packages!

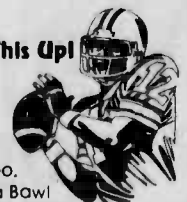
*Mauna Loa Macadamia Nut Corp., a C. BREWER company



WIN

A NEW 1991 EAGLE TALON Enter the Eagle Aloha Bowl Game Day Grand Prize Drawing! and a \$100 Gift Certificate to Times Supermarket

Don't Pass This Up!



Fill out the form below... To enjoy Christmas with your family... at the Eagle Aloha Bowl.

KRATER 96FM/KULA 1460AM. BLOCKBUSTER Video, and Times Supermarket will join the Eagle Aloha Bowl to give-away a 1991 Eagle Talon. Through December 25th you can register to win at all Oahu BLOCKBUSTER Video locations. The car will be displayed one day per week at various Times Supermarket locations. Listen to KRATER 96 FM / KULA 1460 AM for on-air clues as to the featured location. Listeners will be given a password, and asked to "Find The Car". The first person each week to find the driver/on-air personality with the password will receive a \$100 gift certificate to Times Supermarket. Others will receive secondary prizes and bumper stickers. The drawing for the 1991 Eagle Talon will take place on December 25, 1990 at the game!



WIN a New 1991 EAGLE TALON on Game Day December 25, 1990

OFFICIAL ENTRY FORM

Name _____ I Thank you, I already have my Eagle Aloha Bowl tickets

Address _____ I Thank you, I cannot attend but wish to enter the contest

City _____ I YES, I want to purchase Eagle Aloha Bowl tickets

State _____ on _____ Side line _____ @ \$15⁰⁰ each ticket \$ _____

Zip _____ in _____ End zone _____ @ \$15 each ticket \$ _____

Phone _____

Mail this form & make checks payable to:

ALAMO BOWL CHARITIES, INC.
1110 University Ave. #203
Honolulu, Hawaii 96826

Postage & Handling \$ 2.00

GRAND TOTAL \$ _____

*After Nov. 25, tickets are \$30. EAGLE ALOHA BOWL is brought to you by the American Cancer Society United Cancer Fund. Multiple business transactions. Limited liability. Hawaii's Most Treasured Gift. For more information call 1-800-327-9633.



Cpl. Reginald Cole photo

Ombudsman honored

Joyce Miller, wife of Sgt. Mark Miller, Maintenance Co., BSSG-1 is Kaneohe's Ombudsman of the Year for 1990. Miller, who has been an ombudsman for more than five years, and other ombudsmen around Oahu were honored at a dinner ceremony Sept. 11 at the Pearl Harbor Officer's Club.

At A Glance

Swim Lessons

Free after school swim lessons will start at the Station Pool Tuesday. The classes are for ages 6-12. Classes will be divided for certified and non-certified swimmers. For more information regarding times and dates, and to register, call Bob or Debra at 254-6278.

Commissary Closes

The Commissary Stores here and at Pearl Harbor will be closed Oct. 8 in observance of Discover's Day. The Station Commissary will reopen Oct. 9 from 11 a.m. to 5 p.m.

Enlisted Spouses' Center Activities

Adia Personnel Services will have a representative at the Enlisted Spouses' Center Oct. 6 at 7 p.m. Information about permanent and temporary employment will be available. Something is happening every Saturday night at 7 at the Center. Bring a Pot Luck and the children. For more information, call 257-5214.

Remedial Education Services

Scholastic Aptitude Test review classes will begin here

Saturday. Classes will be held on five consecutive Saturdays from 8 a.m.-2 p.m. Armed Forces Classification Test review classes will begin Monday and will be held Monday through Thursday for five weeks. Reservation for both courses is being held at the Joint Education Center. There is no cost to the student for these classes which are limited to active duty personnel. For more information, call 254-1708.

Shrimp Feast

The Wheeler Officers' Wives' Club will hold its 39th Annual Shrimp Feast Oct. 27 at the Wheeler Consolidated Open Mess. The all-you-can-eat buffet begins at 6 p.m. and is \$16.95 per person. There will be live entertainment and door prizes. Advance tickets are recommended. To make reservations or for more information, call 624-1636 or 624-4617.

Families In Waiting

A Christian support group for families meets every Thursday at 7 p.m. at the Kailua United Methodist Church, 1110 Kailua Road. The group is open to all families of servicemembers who are deployed. This includes spouses, parents, grandparents, etc. Child care

is provided for this free meeting. For more information, call Jane Winscott at 261-6238.

Computer Group

All Apple II users interested in forming a users group call SSgt. P.K. Howard at 257-3518 or 254-1738.

Pass & Registration Hours Change

The Pass and Registration Office, located at the H-3 gate, is now operating under new hours. The office will be open Monday-Friday, 7 a.m.-5 p.m. and closed Saturday and Sunday. The services most affected are vehicle, weapons, and bicycle registration, and issuing of fishing and house guest passes. Temporary passes for sponsored guests and vehicles without decals may be obtained through the gate sentry 24 hours a day. For more information, contact SSgt. Hinton at 257-5904.

Christmas Craft Fair

The Hickam Arts and Crafts Center Christmas Craft Fair is Nov. 3 from 9 a.m. to 3 p.m. The fair will take place at 1889 Kunitz

Ave. next to the center. It is open to the public for vendors and visitors. The fee for vendors is \$35. For more information, call 449-2148.

Mokapu Gate Hours

The Mokapu Gate has new operating hours. It will be open from 6:30 a.m. and 4:30 p.m. Monday through Friday, and closed Saturday and Sunday. Arrangements can be made to open the gate under special circumstances.

College Refunds

The Windward Community College is giving full tuition refunds to all Marines and sailors in Operation Desert Shield and their dependents. For more information, call 235-7445.

Dependent Rec Hours

Dependent Recreation building 5062, has new hours. It is open Monday-Friday from 8 a.m.-9 p.m., Saturday from 10 a.m.-9 p.m. and Sunday 10 a.m.-5 p.m.

Support Group

There is a Pregnant Wives' Support Group forming. For more information, call Cheryl Carpenter at 235-7588.

LAW OFFICES OF
JOSEPH P.H. AHUNA, JR.

CALL IF YOU ARE:

- Injured in an Auto Accident
- Suffering from Personal Injury
- Suffering from Serious Injury

FREE INITIAL CONSULTATION
 NO FEE FOR REPRESENTATION UNLESS
 YOUR CASE IS DECIDED IN YOUR FAVOR

235-4000

The Kaneohe Atrium Bldg.
 46-005 Kawa'i Street, Suite 101

KANEOHE • HAWAII

Joseph P.H. Ahuna, Jr.
 Attorney at Law

RESUMES and **SE175**

- Military Specialist — so you don't have to keep explaining all your terminology.
- Award Winning Writer — to put you in the best possible light.
- Laser Set Availability — to set you out in a crowd.
- MasterCard & Visa Accepted

COMPLETE BUSINESS SERVICES
 455-1177

Pearl City

Marine-O Pizza

We're Open Daily 1100-2300 hrs.
 Fri. & Sat. 1100-2300 hrs.
 For Walk-In and Take-Out Orders
 Delivery Service from 1700-2100 hrs.
 Fri. & Sat. 1700-2300 hrs.

FREE Delivery

Call 254-1537, 254-1538, 254-1539

FEEL LIKE YOU'RE ALWAYS RUNNING OUT OF ENERGY?

CHIROPRACTIC CAN HELP PUT SOME PEP IN YOUR STEP!

HELPING YOU FEEL GOOD IS WHAT WE DO BEST! CALL DR. PHILLIPS TODAY!

262-5555

Enchanted Lake Chiropractic

1090 Keolu Dr., Kailua

PART TIME HELP WANTED DISTRICT MANAGER

Earn extra money supervising boys and girls who deliver newspapers one day each week. We have an immediate opening in KMCAS for a mature, organized, self-starting individual who enjoys working with children. Work from your own home on a flexible schedule. Excellent salary PLUS bonuses! Car required, but we pay gas allowances. Call Linda Bulatao at Sun Press newspapers.

Ph. 235-5881

10 Minutes. No Appointment. We Do More!

1. Change your oil with Pennzoil (Your choice of up to 5 quarts of Pennzoil 30w, 40w, 10w-30, and 10w-40)
2. Install a new oil filter
3. Lubricate the chassis
4. Check and fill transmission fluid
5. Check and fill differential fluid
6. Check and fill brake fluid
7. Check and fill power steering fluid
8. Check and fill window washer fluid
9. Check and fill battery
10. Check the air filter, breather element & PCV valve
11. Check the wiper blades
12. Inflate tires to proper pressure
13. Vacuum the interior
14. Wash your exterior windows.

jiffylube

OPEN DAILY:
 Monday - Friday 8 a.m. - 6 p.m.
 Saturday 8 a.m. - 5 p.m.
 Sunday 9 a.m. - 5 p.m.

Pearl Kai Shopping Center
 98-199 Kamehameha Highway
 Across from Pearlridge
 895-5433

"Hawaii's Favorite Oil Change"

Their Battle Continues...

ICARE **CFC**

Please Make Your Combined Federal Campaign (CFC) Contribution to the Paralyzed Veterans of America Spinal Cord Research Foundation #0218

VIKING VIKING VIKING VIKING VIKING VIKING VIKING

I Love To Sew!

SEPTEMBER HOME SEWING MONTH

WEEK END CELEBRATION

VIKING® EUROPEAN QUALITY

A real value from Viking® all metal construction automatic buttonhole, self-adjusting tension 100% jam proof sewing, never needs oiling

PRICES START AT \$397

VIKING ELNA WHITE SEWING CENTER
 670 AUAH ST.
 CALL 521-7956

SALE

3 DAYS ONLY

ALL MODELS SPECIALLY PRICED FOR THIS EVENT
 FRI. 9 AM-8 PM / SAT. 9 AM-5 PM / SUN 10 AM-4 PM

SERGERS
 LOWEST PRICES EVER!
 Get a Viking® Huskylock, Powerlock, or White Superlock and cut your sewing time in half.
PRICES START AT \$297

WHITE JEANS MACHINE
 HEAVY DUTY
 Prices start at **\$197**

Zig-zag, Mends, Hema powerful enough to sew through 19 thicknesses of denim - Free Arm. All metal quality construction

SALE

Seams, overcasts and cuts in one operation, professionally! **SAVE HUNDREDS!**

VIKING VIKING VIKING VIKING VIKING VIKING

Religious Services

Kaneohe Bay
267-3652
Weekdays
11:45 a.m. — Catholic Mass
Wednesday
12:15 — Prayer meeting
Saturday
6 p.m. — Catholic Mass

Sunday
7:30 a.m. — Catholic Mass
8:30 a.m. — Protestant Communion
9:30 a.m. — Sunday School (bldg. 1391)
9:30 a.m. — Catholic Mass
11 a.m. — Protestant

Camp H.M. Smith
477-5098

Sunday
8 a.m. — Catholic Mass
9:30 a.m. — Protestant Worship
9:30 a.m. — Protestant Sunday School

Tuesday
11:30 a.m. — Catholic Mass

Wednesday
5:45 a.m. — Prayer Breakfast
7 p.m. — Choir Rehearsal
Aloha Jewish Chapel
Pearl Harbor

Friday
8 p.m. — Shabat

Saturday
10 a.m. — Shabat and Torah Study

Hawaii Marine Ads

AUTO

1978 Dodge Colt, 4 door. \$400 OBO. Call 254-2852.

1978 Toyota Corolla, good condition, runs good. Best offer. Call 254-3496.

MISC

Electric dryer, G.E., good condition, 18 speed Huffy bike, excellent condition. Call 263-2351.

New England hatch, \$400. Stereo with speakers, \$100 OBO. Call 254-1084.

Heavy duty Hotpoint washer and dryer, like new. \$350 for both. Call 254-3899.

King size bed. Includes frame, boxsprings and mattress. \$150 OBO. 254-1953.

Baron 60EX RC Helo with BCM9 JRPPO radio. Includes gyro. \$1,200. Call 261-4370 and leave message.

Smitty Bilt 3-inch tube bumpers for 1989 Toyota truck, front and rear, black, like new. Call 261-4370 and leave message.

Radio-control four-wheel drive car, Kyosho vanning, gas powered engine includes radio. \$200. Call 261-4370 and leave message.

Bar stools. Chrome and vinyl. Very good condition. \$35 each OBO. Call 283-0293.

Fish tank, 20 gallon with accessories. \$45. Green singing Finch. Call 254-1084.

PETS

AKC Cocker Spaniel, 3-year-old male, great family dog. Must sell to leave Island. Call 254-5741.

WANTED

Room mate to share 4 bedroom Kailua/Enchanted Lakes house. \$325 a month, plus one quarter utilities, deposit. Call 283-0171.



ARRESTED FOR DRUNK DRIVING?
CALL
NOAH D. FIDLER
Attorney at Law
Free Consultation
345-7400/261-3233



Watch OIA Football Live

KICK OFF AN EXCITING SEASON OF PREP ACTION FROM ALOHA STADIUM



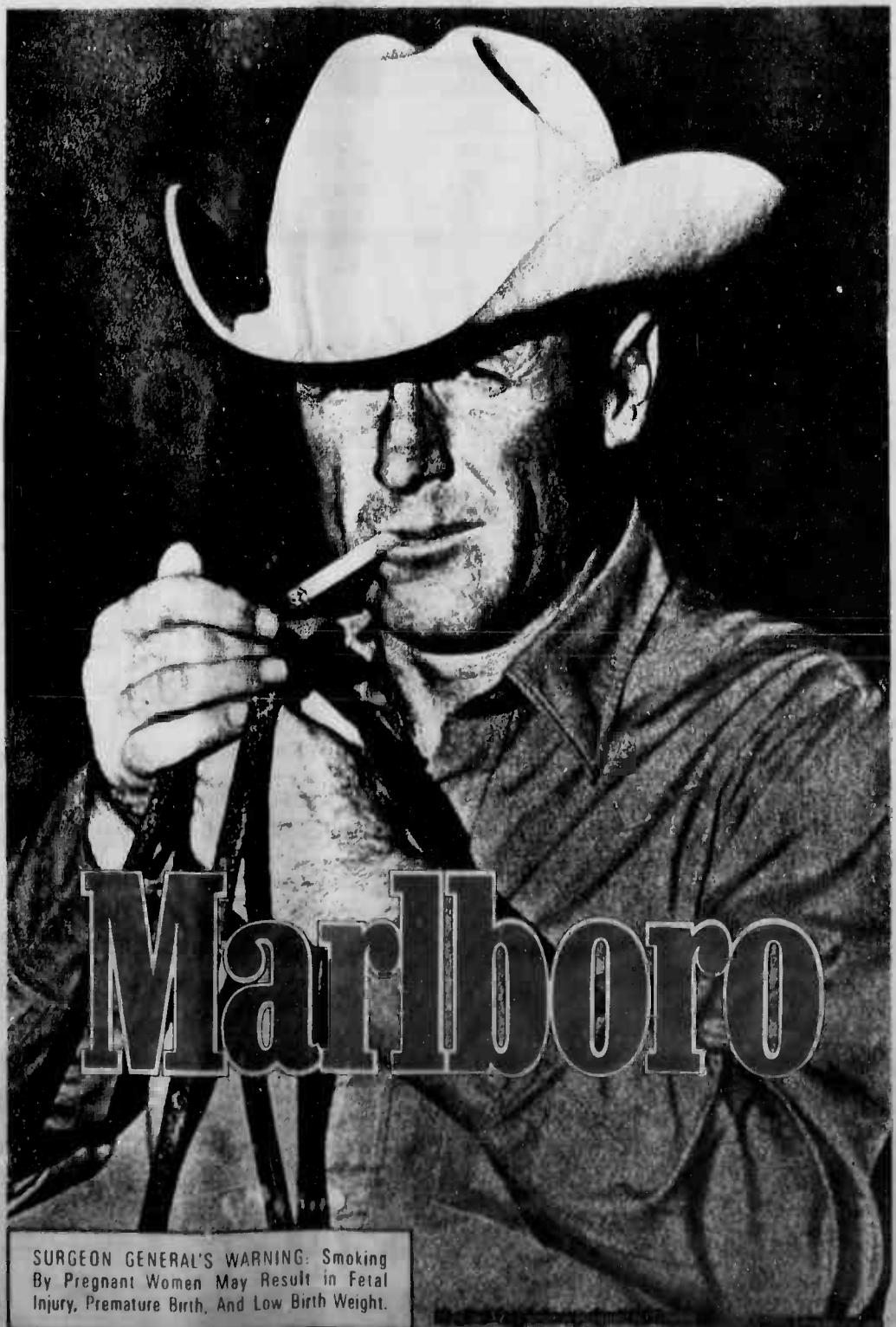
TELEVISED GAME:
FRIDAY
SEPTEMBER 14
at 8:30pm
KAISER VS. KAHUKU

Play By Play
With Larry Bell
Color Commentary
With Larry Price

KBLE 17

Only On Oceanic Cable

SUPPORT OIA GAMES THIS WEEKEND (Not televised)	
FRIDAY	SATURDAY
Kalahoo vs. Farrington at Kailua	Kalani vs. Roosevelt at Kaiser
Kaimuki vs. McKinley at Aloha Stadium	Waipahu at Aiea
Nanakuli at Mililani	Leilehua at Moanalua
Waianae at Pearl City	Campbell at Radford



SURGEON GENERAL'S WARNING: Smoking By Pregnant Women May Result in Fetal Injury, Premature Birth, And Low Birth Weight.

MWR Tickets

The MWR Ticket Office offers tickets and information on how to get them at special military rates. The office also takes reservations for events and attractions around the Island. Call the Entertainment Hotline at 254-3304 or come to building 219, the theater lobby, for information and reservations.

Club Oct. 13 at 6 p.m. It will be a fun night of entertainment, prizes, music and dancing. Tickets are available at the club for \$12.50.

Rainbow Football—Tickets are available for all home games. Sideline tickets are \$14.50 and end zone seats are \$12.50. Children's and senior citizen's tickets are \$7.50 (north end zone only).

The next home game is Oct. 6, at 7 p.m. against Maine.

Aloha Bowl Tickets—Tickets are now on sale for this Christmas Day classic of top college teams. Tickets for 40-50 yard line seats are \$18.

Diamond Head Theater—Tony Award-winning musical

classic "Kismet" will be performed through Oct. 14.

Kennedy Theater—Presenting "Bye Bye, Hana Buttah Days," a light-hearted look at the puberty years, will run through Sunday.

Theater tickets for all Consolidated Theaters are only \$4.25 and are good until December 1990.

MWR Movies

Family Theater
7-15
245-2113

Tonight
No movie

Friday-Sunday

Navy Seals—(R) 113 min. An adventure starring Charlie Sheen. America's most elite Naval combat and rescue team must destroy American Stinger missiles

which have fallen into the hands of Islamic terrorists.

Monday-Wednesday
Problem Child—(PG) 81 min. A comedy starring John Ritter. An unsuspecting suburban couple adopt a seemingly loveable child who wreaks havoc on their household.

Note: All DOD civilians and their dependents are now allowed to utilize the theater.

Bunn & Bunn
Attorneys at Law
A Law Corporation

- Low Uncontested Divorces
- Low Uncontested Adoptions
- Bankruptcy
- Car Accidents & Deaths

Greg I. Bunn
Former Military JAG Attorney

667 South King St. Suite 178 Ph. 524-4529

ASK ME HOW TO DROP WEIGHT.

Homeopathic Herbal Formula

\$34.95 plus shipping & handling
ONE MONTH'S SUPPLY

30 DAY MONEY BACK GUARANTEE.
CALL TODAY & START LOSING WEIGHT TOMORROW!
263-3637

Ask me how you can become a distributor & make money too. FAX: 261-0630

KUHIO 911-1177 STARTS TOMORROW 1:15-3:30-5:45 8:00-10:15 Sorry, No Passes!	PEARL RIDGE 187-5581 STARTS TOMORROW! Call Theatre For Showtimes Sorry, No Passes!	KOKO MARINA 395-5503 STARTS TOMORROW! 5:30-7:30 8-9:30 Sorry, No Passes!
--------------------------------------------------------------------------------------------------	-------------------------------------------------------------------------------------------------------	------------------------------------------------------------------------------------------------

PACIFIC HEIGHTS

WALL TO WALL
VALUE AND SAVINGS!

30% OFF KOA FURNITURE SALE

TOP QUALITY KOA AT THE BEST PRICES!

Hawaiian Heritage Furniture
2870 Ualena St.
(2nd Right off Lagoon Drive, near the airport)

839-6656

M-F 9:00 to 5:30
Sat 9:00 to 5:00

This could be the one that lays the golden egg.

She's not a goose. She's one of a special strain of white leghorn chickens. And she's helping scientists unlock the secrets of one of the most serious forms of arthritis—scleroderma.

In scleroderma, movement becomes extremely painful, and sometimes, impossible. The disease can also spread and cause serious complications. Even death.

Until recently, understanding the disease was difficult. But a special strain of chickens was discovered; chickens that inherit a disease very similar to human scleroderma. Arthritis researchers are now making significant progress against this disease. The Arthritis Foundation has helped make these and hundreds of other research projects possible. Support the Arthritis Foundation.

It's time we took arthritis seriously.

ARTHRITIS FOUNDATION

© 1987, Arthritis Foundation

FAMILY CHIROPRACTIC CENTER

Family Chiropractic Center & Windward Rehabilitation & Physical Therapy Center

YOUR COMPLETE NATURAL HEALTH CENTER
Five Massage Therapists On Staff
Open 6 Days A Week

HONFED. BLDG.
2ND FLOOR
KANEHOE

235-6677

Monday-Friday 8:00 a.m.-6:00 p.m.
Saturday 8:00 a.m.-12:30 p.m.

THE CLASSIFIED INDEX

Telephone Service: 838-8888 Mon.-Fri. 8 a.m.-5 p.m.

Counter Service: 45-525 Luluku Kaneohe Mon.-Fri. 8 a.m.-5 p.m.

Deadline: Line Ads due by 12 Noon - Tuesday Class Display Ads due by 4:00 p.m. Friday CANCELLATIONS & CORRECTIONS due by 12 Noon-Mon.

Important Information: Please check your ad on the inside and bring any error to the attention of Classified immediately. RFD Publications assumes responsibility for the first two publications, and any adjustments or credit will not exceed the amount of the first publication. For further details, please contact our office. Expressly reserves any and all rights. No responsibility for damage due to errors. RFD Publications cannot assume responsibility for the accuracy or performance of advertisers.

Go Sale-ing... In Classified!

Sun Press Classified

235-5656

0 Free Bees FREE: '83 Buick Skylark V6, runs, transmission is leaking. Call 262-8888.	0 Free Bees FREE: 2 Cats to good homes. Call 426-9013.	0 Free Bees FREE: Pitbull/terrier mix/female, 1 yr., need permanent home w/ fenced yard. Call 886-7222.	4 Health & Fitness HEALTH & WEALTH Europa 41 diet, avail. now in Hawaii. Shakes, meals, bars. \$2.50 ea. 486-1356. YOU Deserve III Treat yourself to a massage now. 951-6330 MAE795.
FREE: 2 white lab/terrier sisters, spayed, 1 yr. needs permanent home together. 466-7222	FREE: baby kittens, fat & fluffy to good homes. Call 261-7176.	FREE: Pitbull/terrier mix/female, 1 yr., need permanent home w/ fenced yard. Call 886-7222.	10 Cemetery Plots HAWAII Memorial Park a choice plots. Only \$1800 each. Call 261-6207. MILILANI plots. \$2000 ea. Will save \$ at \$1200 ea. 1 to \$1100 623-6699

TRAFFIC CONTROL DEVICES
Traffic Schedule No. 90-9

IN ACCORDANCE WITH THE PROVISIONS OF ORDINANCE NO. 79-44 AMENDING ARTICLE III, THE DEPARTMENT OF TRANSPORTATION SERVICES, CITY AND COUNTY OF HONOLULU, HEREBY ESTABLISHES TRAFFIC CONTROL DEVICES TO AMEND SCHEDULE I OF SECTION 16-6.2(1) ESTABLISHING TRAFFIC SIGNAL LIGHTS; SCHEDULE XIV OF SECTION 16-11.3 ESTABLISHING STOP INTERSECTIONS; SCHEDULE XX OF SECTION 16-13.10(1)(A) ESTABLISHING TOW ZONES - 24 HOURS; SCHEDULE XXI OF SECTION 16-13.10(1)(B) ESTABLISHING TOW ZONES - SPECIFIED TIMES; SCHEDULE XXII OF SECTION 16-14.8(1) ESTABLISHING PROHIBITED PARKING CERTAIN AREAS; SCHEDULE XXVIII OF SECTION 16-24.17 ESTABLISHING MISCELLANEOUS TRAFFIC CONTROLS.

SECTION 1. Chapter 15 (1976 Traffic Code), City and County of Honolulu, as amended, is hereby further amended in the following particulars:

- By amending Schedule I of Sec. 16-6.2(1) establishing traffic signal lights by adding thereto the following item:
 - "South Beretania St. at Hale Makai St."
- By amending Schedule XIV of Sec. 16-11.3 establishing stop intersections by adding thereto the following items:
 - "Hale Makai St. Traffic on Hale Makai St. shall stop before entering South Hotel St."
 - "Keala Makai St. Traffic on Keala Makai St. shall stop before entering South Hotel St."
 - "Keala Makai St. Traffic on Keala Makai St. shall stop before entering South King St."
- By amending Schedule XX of Sec. 16-13.10(1)(A) establishing tow zones - 24 hours by adding thereto the following items:
 - "Chaplain Ln., both sides, between Rehal St. and Fort Street Mall."
 - "Tiliko St., Koko Head side, for a distance 100' mauka direction from a point 224' mauka of the mauka curbline prolongation of Luualo St."
- By amending Schedule XXI of Sec. 16-13.10(1)(B) establishing tow zones - specified times in the following particulars:
 - By adding thereto the following item:
 - "Mahalo St., Ewa side, for a distance 90' mauka direction from a point 120' mauka of the mauka curbline prolongation of Wales St., during the hours 7:30 a.m. to 5:00 p.m., except Saturday, Sunday and holidays."
 - By amending item relating to Young St., mauka side, for a distance 170' Ewa direction from the Ewa curbline prolongation of Keaumoku St. during the hours of 6:30 a.m. to 6:30 p.m., except Saturday, Sunday and holidays, to read:
 - "Young St., mauka side, for a distance 170' Ewa direction from the Ewa curbline prolongation of Keaumoku St. during the hours of 6:30 a.m. to 6:30 p.m., except Saturday, Sunday and holidays."

By amending item relating to Young St., mauka side, for a distance 170' Ewa direction from the Ewa curbline prolongation of Keaumoku St. during the hours of 6:30 a.m. to 6:30 p.m., except Saturday, Sunday and holidays, to read: "Alapai St., mauka side, for a distance 78' Koko Head direction from a point 27' Ewa of the Koko Head curbline prolongation of Honolulu St."

"Hale Makai St., Ewa side, between South Beretania St. and South Hotel St."

"Hale Makai St., Koko Head side, for a distance 79' mauka from the mauka curbline prolongation of South Hotel St."

"Hale Makai St., Koko Head side, for a distance 78' mauka from the mauka curbline prolongation of South Beretania St."

"Keala Makai St., both sides, between South Hotel St. and South King St."

"Kilaeua Ave., mauka side, for a distance 88' Koko Head direction from the Koko Head curbline prolongation of Ninth Ave."

"Liliha St., Ewa side, for a distance 45' mauka direction from the mauka curbline prolongation of Anala St."

"Mahalo St., Ewa side, for a distance 55' in the mauka direction from a point 65' mauka of the mauka curbline prolongation of Wales St., during the hours 7:30 a.m. to 5:00 p.m., except Saturday, Sunday and holidays."

"Mahalo St., Ewa side, between a point 210' mauka of the mauka curbline prolongation of Wales St. and Twin View Dr. during the hours 7:30 a.m. to 5:00 p.m., except Saturday, Sunday and holidays."

"Ninth Ave., Koko Head side, for a distance 80' mauka direction from the mauka curbline prolongation of Kilaeua Ave."

"Palolo Ave., Koko Head side, between Keans St. and Ninth Ave."

"Thirteenth Ave., Ewa side, between Pahoa Ave. and its turnaround area."

"Thirteenth Ave., Koko Head side, for a distance 37' mauka direction from the mauka curbline prolongation of Pahoa Ave."

"Thirteenth Ave., Koko Head side, between the driveway of 1000' Thirteenth Ave. and its turnaround area."

- By amending the following items:
 - Au St., mauka side, for a distance of 15' Haleiwa direction, commencing from a point 125' Haleiwa of the Haleiwa curbline prolongation of Awawaw St. during the hours of 8:30 a.m. to 2:30 p.m., Mondays and Tuesdays only, to read:
 - "Au St., mauka side, for a distance of 15' in the Haleiwa direction, commencing from a point 125' Haleiwa of the Haleiwa curbline prolongation of Awawaw St., during the hours of 8:00 a.m. to 12:00 p.m., Wednesdays and Saturdays only."
 - Komo Mai Dr., Koko Head side, mauka direction, from the mauka property line of 2073 Komo Mai Dr. to the mauka curbline prolongation of Aumakua St. to read:
 - "Komo Mai Dr., Koko Head side, from a point 10' mauka of the mauka property line of 2073 Komo Mai Dr. to the mauka curbline prolongation of Aumakua St."
 - Mahalo St., Ewa side, between Judd St. and Twin View Dr. during the hours 7:30 a.m. to 5:00 p.m., except Saturday, Sunday and holidays, to read:
 - "Mahalo St., Ewa side, between Judd St. and the driveway located at 2170 Mahalo St. during the hours of 7:30 a.m. to 5:00 p.m., except Saturday, Sunday and holidays."
- By amending Schedule XXXVIII of Sec. 16-24.17 establishing miscellaneous traffic controls in the following particulars:
 - By adding thereto the following items:
 - "Hale Makai St., Koko Head side, for a distance of 170' mauka direction from a point 75' mauka of the mauka curbline prolongation of South Hotel St. for parking of buses carrying passengers to and from the police building at all times."
 - By amending item relating to Holo St., from the Koko Head side of Alapai St. to a point 500' in the Koko Head direction is closed to vehicular traffic from 6:00 p.m. to 6:00 a.m. daily and 24 hours on Saturday, Sunday and holidays, to read:
 - "Holo St., from the Koko Head side of Alapai St. to a point 600' Koko Head direction is permanently closed to vehicular traffic 24 hours daily."

Section 2. This schedule is hereby attached to and made a part of Article VI hereof and shall take effect on (10) working days after its publication.

ALFRED J. TRIDE, Director
Department of Transportation Services
City and County of Honolulu

Dated: September 17, 1990

Copies of the Schedule are on file in the City Clerk's Office for use and examination by the public.
(Sun Press: 9/27/90)

Part time job in Kaneohe BUSINESS DELIVERY REP. Thursday only Must be dependable, have own vehicle. Salary, bonus and gas allowance. Call Circulation Office 247-8755 ex. 354

NEW!! NEW!! NEW!! WINDWARD JEEP EAGLE of Kaneohe Applications are now being accepted for SALES PEOPLE Ask for Mr. Roberts Experience not necessary. Call 235-8744

F.W. WOOLWORTH Accepting applications for: WAREHOUSE/RECEIVING Must have some experience some heavy lifting required. WINDWARD MALL Full-time/\$8.00 hr. Part-time/\$5.50 hr. Apply in person at: 1045 Fort Street Mall Mon.-Fri., 9 a.m.-11 a.m. Or call Nancy 524-8980 EQUAL OPPORTUNITY EMPLOYER

Printing Press Trainees Immediate openings for pressroom workers to assist with the production of newspapers and advertising circulars. Learn a highly-skilled job in a profession that pays well! If you are willing to work hard and work 12-hour shifts, we'll start you at \$6.50 per hour. Wage increases are likely after the third, sixth & twelfth month intervals with good performance. Excellent benefits including medical, dental, life insurance and profit sharing. Apply in person at: Sun Press/MidWeek 45-525 Luulu Road Kaneohe, HI 96744

District Managers Wanted Part-Time Positions in Hawaii Kai - Kaneohe Kailua - Mililani Growing suburban newspaper needs sharp self-starters. Must like to work with children and have own vehicle. Communication ability imperative. Hours flexible but must be available on Thursday. Good salary plus gas allowance and bonus. Call Linda Bulatao Director of Circulation at 235-5881 for interview

60 Help Wanted Male/Female DO you want to increase gas mileage, improve octane, clean carbon & crud? Call 1-800-869-4771.

60 Help Wanted Male/Female HICKAM Commissary needs help in the deli, bakery, cake decorator, yogurt, & pizza carts. 1-800-248-0112

60 Help Wanted Male/Female HIGH COMMISSION For free lance advertising sales persons. Motivated? We will train! 735-0610 or 281-0844

60 Help Wanted Male/Female PIANO teacher-Mauna Kea. Call Barbara at 949-7674, M-F, 9-6.

DRIVERS, F/T, P/T, Handi-Van. \$8.25 per hour. Get paid while learning. Plus benefits & vacations. School bus drivers, P/T, \$25 per day (app. 4 hrs.). Traffic abstract required. Aloha State Tour Transportation 841-8033, Mon-Fri. 8-4. Ask for Irwin.

HOME CLEANERS II UP TO \$8.25/HR. STUDENTS, MOTHERS MILITARY, WELCOME. Flex. daytime hours. Need car & home phone. Paid weekly. Call 732-9490 Dana's Housekeeping Personnel Service.

SUBWAY FLEX. SCHEDULE Variable hrs. 9am-2pm, 10am-3pm, 11am-4pm ?? Ideal for moms w/kids in school. Set your own hours. Great benefits, possible full-time tool. Apply in person 3131 N. Nimitz Hwy. (near Airport) 839-1555

PILOTS MECHANICS Nationwide/Worldwide Aviation employment opportunities. Free Brochure Call Toll Free 1-800-543-5201 (24 hrs. day/night)

EARN \$300 to \$500 per week Reading Books at home. Call (1) 615-473-7440 Ext. B-514

HOUSEKEEPERS Waitresses/Waiters, Diet Aides, Nursing Asst., Maint., P/T days, P/T nites. For info, call Angie at 247-6211, M-F, 9-3pm. Poha'i Nani, Kaneohe.

PLANT Nursery worker Part time. Ph. 239-8987 Windward resident pref.

TEACHER'S Assistant Preschool, Kailua for applications call 537-9331, 9am-12noon.

EARN \$339.84 weekly! Easy, enjoyable, home assembly work, no exp. necessary. 24 hr. recording reveals details. 1-801-756-1401 dept. #46

HOUSEKEEPERS Waitresses/Waiters, Diet Aides, Nursing Asst., Maint., P/T days, P/T nites. For info, call Angie at 247-6211, M-F, 9-3pm. Poha'i Nani, Kaneohe.

POOL Company needs 2 construction laborers immediately. 261-3508

TEACHER-Christian Preschool, M-F, 8am-Noon, Kailua. 262-6070.

EARN \$300 to \$500 per week Reading Books at home. Call (1) 615-473-7440 Ext. B-514

HOUSEKEEPERS Waitresses/Waiters, Diet Aides, Nursing Asst., Maint., P/T days, P/T nites. For info, call Angie at 247-6211, M-F, 9-3pm. Poha'i Nani, Kaneohe.

POSTAL JOBS \$18,392-\$67,125/yr. Now hiring. Call (1) 805-687-6000 ext P-4031 for current list.

TEACHER-Christian Preschool, M-F, 8am-Noon, Kailua. 262-6070.

EARN \$339.84 weekly! Easy, enjoyable, home assembly work, no exp. necessary. 24 hr. recording reveals details. 1-801-756-1401 dept. #46

HOUSEKEEPERS Waitresses/Waiters, Diet Aides, Nursing Asst., Maint., P/T days, P/T nites. For info, call Angie at 247-6211, M-F, 9-3pm. Poha'i Nani, Kaneohe.

PLANT Nursery worker Part time. Ph. 239-8987 Windward resident pref.

TEACHER-Christian Preschool, M-F, 8am-Noon, Kailua. 262-6070.

EARN \$300 to \$500 per week Reading Books at home. Call (1) 615-473-7440 Ext. B-514

HOUSEKEEPERS Waitresses/Waiters, Diet Aides, Nursing Asst., Maint., P/T days, P/T nites. For info, call Angie at 247-6211, M-F, 9-3pm. Poha'i Nani, Kaneohe.

POSTAL JOBS \$18,392-\$67,125/yr. Now hiring. Call (1) 805-687-6000 ext P-4031 for current list.

TEACHER-Christian Preschool, M-F, 8am-Noon, Kailua. 262-6070.

EARN \$339.84 weekly! Easy, enjoyable, home assembly work, no exp. necessary. 24 hr. recording reveals details. 1-801-756-1401 dept. #46

HOUSEKEEPERS Waitresses/Waiters, Diet Aides, Nursing Asst., Maint., P/T days, P/T nites. For info, call Angie at 247-6211, M-F, 9-3pm. Poha'i Nani, Kaneohe.

PLANT Nursery worker Part time. Ph. 239-8987 Windward resident pref.

TEACHER-Christian Preschool, M-F, 8am-Noon, Kailua. 262-6070.

EARN \$300 to \$500 per week Reading Books at home. Call (1) 615-473-7440 Ext. B-514

HOUSEKEEPERS Waitresses/Waiters, Diet Aides, Nursing Asst., Maint., P/T days, P/T nites. For info, call Angie at 247-6211, M-F, 9-3pm. Poha'i Nani, Kaneohe.

POSTAL JOBS \$18,392-\$67,125/yr. Now hiring. Call (1) 805-687-6000 ext P-4031 for current list.

TEACHER-Christian Preschool, M-F, 8am-Noon, Kailua. 262-6070.

EARN \$339.84 weekly! Easy, enjoyable, home assembly work, no exp. necessary. 24 hr. recording reveals details. 1-801-756-1401 dept. #46

HOUSEKEEPERS Waitresses/Waiters, Diet Aides, Nursing Asst., Maint., P/T days, P/T nites. For info, call Angie at 247-6211, M-F, 9-3pm. Poha'i Nani, Kaneohe.

PLANT Nursery worker Part time. Ph. 239-8987 Windward resident pref.

TEACHER-Christian Preschool, M-F, 8am-Noon, Kailua. 262-6070.

EARN \$300 to \$500 per week Reading Books at home. Call (1) 615-473-7440 Ext. B-514

HOUSEKEEPERS Waitresses/Waiters, Diet Aides, Nursing Asst., Maint., P/T days, P/T nites. For info, call Angie at 247-6211, M-F, 9-3pm. Poha'i Nani, Kaneohe.

POSTAL JOBS \$18,392-\$67,125/yr. Now hiring. Call (1) 805-687-6000 ext P-4031 for current list.

TEACHER-Christian Preschool, M-F, 8am-Noon, Kailua. 262-6070.

EARN \$339.84 weekly! Easy, enjoyable, home assembly work, no exp. necessary. 24 hr. recording reveals details. 1-801-756-1401 dept. #46

HOUSEKEEPERS Waitresses/Waiters, Diet Aides, Nursing Asst., Maint., P/T days, P/T nites. For info, call Angie at 247-6211, M-F, 9-3pm. Poha'i Nani, Kaneohe.

PLANT Nursery worker Part time. Ph. 239-8987 Windward resident pref.

TEACHER-Christian Preschool, M-F, 8am-Noon, Kailua. 262-6070.

EARN \$300 to \$500 per week Reading Books at home. Call (1) 615-473-7440 Ext. B-514

HOUSEKEEPERS Waitresses/Waiters, Diet Aides, Nursing Asst., Maint., P/T days, P/T nites. For info, call Angie at 247-6211, M-F, 9-3pm. Poha'i Nani, Kaneohe.

POSTAL JOBS \$18,392-\$67,125/yr. Now hiring. Call (1) 805-687-6000 ext P-4031 for current list.

TEACHER-Christian Preschool, M-F, 8am-Noon, Kailua. 262-6070.

EARN \$339.84 weekly! Easy, enjoyable, home assembly work, no exp. necessary. 24 hr. recording reveals details. 1-801-756-1401 dept. #46

HOUSEKEEPERS Waitresses/Waiters, Diet Aides, Nursing Asst., Maint., P/T days, P/T nites. For info, call Angie at 247-6211, M-F, 9-3pm. Poha'i Nani, Kaneohe.

PLANT Nursery worker Part time. Ph. 239-8987 Windward resident pref.

TEACHER-Christian Preschool, M-F, 8am-Noon, Kailua. 262-6070.

EARN \$300 to \$500 per week Reading Books at home. Call (1) 615-473-7440 Ext. B-514

HOUSEKEEPERS Waitresses/Waiters, Diet Aides, Nursing Asst., Maint., P/T days, P/T nites. For info, call Angie at 247-6211, M-F, 9-3pm. Poha'i Nani, Kaneohe.

POSTAL JOBS \$18,392-\$67,125/yr. Now hiring. Call (1) 805-687-6000 ext P-4031 for current list.

TEACHER-Christian Preschool, M-F, 8am-Noon, Kailua. 262-6070.

EARN \$339.84 weekly! Easy, enjoyable, home assembly work, no exp. necessary. 24 hr. recording reveals details. 1-801-756-1401 dept. #46

HOUSEKEEPERS Waitresses/Waiters, Diet Aides, Nursing Asst., Maint., P/T days, P/T nites. For info, call Angie at 247-6211, M-F, 9-3pm. Poha'i Nani, Kaneohe.

PLANT Nursery worker Part time. Ph. 239-8987 Windward resident pref.

TEACHER-Christian Preschool, M-F, 8am-Noon, Kailua. 262-6070.

EARN \$300 to \$500 per week Reading Books at home. Call (1) 615-473-7440 Ext. B-514

HOUSEKEEPERS Waitresses/Waiters, Diet Aides, Nursing Asst., Maint., P/T days, P/T nites. For info, call Angie at 247-6211, M-F, 9-3pm. Poha'i Nani, Kaneohe.

POSTAL JOBS \$18,392-\$67,125/yr. Now hiring. Call (1) 805-687-6000 ext P-4031 for current list.

TEACHER-Christian Preschool, M-F, 8am-Noon, Kailua. 262-6070.

EARN \$339.84 weekly! Easy, enjoyable, home assembly work, no exp. necessary. 24 hr. recording reveals details. 1-801-756-1401 dept. #46

HOUSEKEEPERS Waitresses/Waiters, Diet Aides, Nursing Asst., Maint., P/T days, P/T nites. For info, call Angie at 247-6211, M-F, 9-3pm. Poha'i Nani, Kaneohe.

PLANT Nursery worker Part time. Ph. 239-8987 Windward resident pref.

TEACHER-Christian Preschool, M-F, 8am-Noon, Kailua. 262-6070.

EARN \$300 to \$500 per week Reading Books at home. Call (1) 615-473-7440 Ext. B-514

HOUSEKEEPERS Waitresses/Waiters, Diet Aides, Nursing Asst., Maint., P/T days, P/T nites. For info, call Angie at 247-6211, M-F, 9-3pm. Poha'i Nani, Kaneohe.

POSTAL JOBS \$18,392-\$67,125/yr. Now hiring. Call (1) 805-687-6000 ext P-4031 for current list.

TEACHER-Christian Preschool, M-F, 8am-Noon, Kailua. 262-6070.

EARN \$339.84 weekly! Easy, enjoyable, home assembly work, no exp. necessary. 24 hr. recording reveals details. 1-801-756-1401 dept. #46

HOUSEKEEPERS Waitresses/Waiters, Diet Aides, Nursing Asst., Maint., P/T days, P/T nites. For info, call Angie at 247-6211, M-F, 9-3pm. Poha'i Nani, Kaneohe.

PLANT Nursery worker Part time. Ph. 239-8987 Windward resident pref.

TEACHER-Christian Preschool, M-F, 8am-Noon, Kailua. 262-6070.

EARN \$300 to \$500 per week Reading Books at home. Call (1) 615-473-7440 Ext. B-514

HOUSEKEEPERS Waitresses/Waiters, Diet Aides, Nursing Asst., Maint., P/T days, P/T nites. For info, call Angie at 247-6211, M-F, 9-3pm. Poha'i Nani, Kaneohe.

POSTAL JOBS \$18,392-\$67,125/yr. Now hiring. Call (1) 805-687-6000 ext P-4031 for current list.

TEACHER-Christian Preschool, M-F, 8am-Noon, Kailua. 262-6070.

EARN \$339.84 weekly! Easy, enjoyable, home assembly work, no exp. necessary. 24 hr. recording reveals details. 1-801-756-1401 dept. #46

HOUSEKEEPERS Waitresses/Waiters, Diet Aides, Nursing Asst., Maint., P/T days, P/T nites. For info, call Angie at 247-6211, M-F, 9-3pm. Poha'i Nani, Kaneohe.

PLANT Nursery worker Part time. Ph. 239-8987 Windward resident pref.

TEACHER-Christian Preschool, M-F, 8am-Noon, Kailua. 262-6070.

EARN \$300 to \$500 per week Reading Books at home. Call (1) 615-473-7440 Ext. B-514

HOUSEKEEPERS Waitresses/Waiters, Diet Aides, Nursing Asst., Maint., P/T days, P/T nites. For info, call Angie at 247-6211, M-F, 9-3pm. Poha'i Nani, Kaneohe.

POSTAL JOBS \$18,392-\$67,125/yr. Now hiring. Call (1) 805-687-6000 ext P-4031 for current list.

TEACHER-Christian Preschool, M-F, 8am-Noon, Kailua. 262-6070.

EARN \$339.84 weekly! Easy, enjoyable, home assembly work, no exp. necessary. 24 hr. recording reveals details. 1-801-756-1401 dept. #46

HOUSEKEEPERS Waitresses/Waiters, Diet Aides, Nursing Asst., Maint., P/T days, P/T nites. For info, call Angie at 247-6211, M-F, 9-3pm. Poha'i Nani, Kaneohe.

PLANT Nursery worker Part time. Ph. 239-8987 Windward resident pref.

TEACHER-Christian Preschool, M-F, 8am-Noon, Kailua. 262-6070.

EARN \$300 to \$500 per week Reading Books at home. Call (1) 615-473-7440 Ext. B-514

HOUSEKEEPERS Waitresses/Waiters, Diet Aides, Nursing Asst., Maint., P/T days, P/T nites. For info, call Angie at 247-6211, M-F, 9-3pm. Poha'i Nani, Kaneohe.

POSTAL JOBS \$18,392-\$67,125/yr. Now hiring. Call (1) 805-687-6000 ext P-4031 for current list.

TEACHER-Christian Preschool, M-F, 8am-Noon, Kailua. 262-6070.

EARN \$339.84 weekly! Easy, enjoyable, home assembly work, no exp. necessary. 24 hr. recording reveals details. 1-801-756-1401 dept. #46

HOUSEKEEPERS Waitresses/Waiters, Diet Aides, Nursing Asst., Maint., P/T days, P/T nites. For info, call Angie at 247-6211, M-F, 9-3pm. Poha'i Nani, Kaneohe.

PLANT Nursery worker Part time. Ph. 239-8987 Windward resident pref.

TEACHER-Christian Preschool, M-F, 8am-Noon, Kailua. 262-6070.

EARN \$300 to \$500 per week Reading Books at home. Call (1) 615-473-7440 Ext. B-514

HOUSEKEEPERS Waitresses/Waiters, Diet Aides, Nursing Asst., Maint., P/T days, P/T nites. For info, call Angie at 247-6211, M-F, 9-3pm. Poha'i Nani, Kaneohe.

POSTAL JOBS \$18,392-\$67,125/yr. Now hiring. Call (1) 805-687-6000 ext P-4031 for current list.

TEACHER-Christian Preschool, M-F, 8am-Noon, Kailua. 262-6070.

EARN \$339.84 weekly! Easy, enjoyable, home assembly work, no exp. necessary. 24 hr. recording reveals details. 1-801-756-1401 dept. #46

HOUSEKEEPERS Waitresses/Waiters, Diet Aides, Nursing Asst., Maint., P/T days, P/T nites. For info, call Angie at 247-6211, M-F, 9-3pm. Poha'i Nani, Kaneohe.

PLANT Nursery worker Part time. Ph. 239-8987 Windward resident pref.

TEACHER-Christian Preschool, M-F, 8am-Noon, Kailua. 262-6070.

EARN \$300 to \$500 per week Reading Books at home. Call (1) 615-473-7440 Ext. B-514

HOUSEKEEPERS Waitresses/Waiters, Diet Aides, Nursing Asst., Maint., P/T days, P/T nites. For info, call Angie at 247-6211, M-F, 9-3pm. Poha'i Nani, Kaneohe.

POSTAL JOBS \$18,392-\$67,125/yr. Now hiring. Call (1) 805-687-6000 ext P-4031 for current list.

TEACHER-Christian Preschool, M-F, 8am-Noon, Kailua. 262-6070.

EARN \$339.84 weekly! Easy, enjoyable, home assembly work, no exp. necessary. 24 hr. recording reveals details. 1-801-756-1401 dept. #46

HOUSEKEEPERS Waitresses/Waiters, Diet Aides, Nursing Asst., Maint., P/T days, P/T nites. For info, call Angie at 247-6211, M-F, 9-3pm. Poha'i Nani, Kaneohe.

PLANT Nursery worker Part time. Ph. 239-8987 Windward resident pref.

TEACHER-Christian Preschool, M-F, 8am-Noon, Kailua. 262-6070.

EARN \$300 to \$500 per week Reading Books at home. Call (1) 615-473-7440 Ext. B-514

HOUSEKEEPERS Waitresses/Waiters, Diet Aides, Nursing Asst., Maint., P/T days, P/T nites. For info, call Angie at 247-6211, M-F, 9-3pm. Poha'i Nani, Kaneohe.

POSTAL JOBS \$18,392-\$67,125/yr. Now hiring. Call (1) 805-687-6000 ext P-4031 for current list.

TEACHER-Christian Preschool, M-F, 8am-Noon, Kailua. 262-6070.

EARN \$339.84 weekly! Easy, enjoyable, home assembly work, no exp. necessary. 24 hr. recording reveals details. 1-801-756-1401 dept. #46

HOUSEKEEPERS Waitresses/Waiters, Diet Aides, Nursing Asst., Maint., P/T days, P/T nites. For info, call Angie at 247-6211, M-F, 9-3pm. Poha'i Nani, Kaneohe.

PLANT Nursery worker Part time. Ph. 239-8987 Windward resident pref.

TEACHER-Christian Preschool, M-F, 8am-Noon, Kailua. 262-6070.

EARN \$300 to \$500 per week Reading Books at home. Call (1) 615-473-7440 Ext. B-514

HOUSEKEEPERS Waitresses/Waiters, Diet Aides, Nursing Asst., Maint., P/T days, P/T nites. For info, call Angie at 247-6211, M-F, 9-3pm. Poha'i Nani, Kaneohe.

POSTAL JOBS \$18,392-\$67,125/yr. Now hiring. Call (1) 805-687-6000 ext P-4031 for current list.

TEACHER-Christian Preschool, M-F, 8am-Noon, Kailua. 262-6070.

EARN \$339.84 weekly! Easy, enjoyable, home assembly work, no exp. necessary. 24 hr. recording reveals details. 1-801-756-1401 dept. #46

HOUSEKEEPERS Waitresses/Waiters, Diet Aides, Nursing Asst., Maint., P/T days, P/T nites. For info, call Angie at 247-6211, M-F, 9-3pm. Poha'i Nani, Kaneohe.

PLANT Nursery worker Part time. Ph. 239-8987 Windward resident pref.

TEACHER-Christian Preschool, M-F, 8am-Noon, Kailua. 262-6070.

EARN \$300 to \$500 per week Reading Books at home. Call (1) 615-473-7440 Ext. B-514

HOUSEKEEPERS Waitresses/Waiters, Diet Aides, Nursing Asst., Maint., P/T days, P/T nites. For info, call Angie at 247-6211, M-F, 9-3pm. Poha'i Nani, Kaneohe.

POSTAL JOBS \$18,392-\$67,125/yr. Now hiring. Call (1) 805-687-6000 ext P-4031 for current list.

TEACHER-Christian Preschool, M-F, 8am-Noon, Kailua. 262-6070.

EARN \$339.84 weekly! Easy, enjoyable, home assembly work, no exp. necessary. 24 hr. recording reveals details. 1-801-756-1401 dept. #46

HOUSEKEEPERS Waitresses/Waiters, Diet Aides, Nursing Asst., Maint., P/T days, P/T nites. For info, call Angie at 247-6211, M-F, 9-3pm. Poha'i Nani, Kaneohe.

PLANT Nursery worker Part time. Ph. 239-8987 Windward resident pref.

TEACHER-Christian Preschool, M-F, 8am-Noon, Kailua. 262-6070.

EARN \$300 to \$500 per week Reading Books at home. Call (1) 615-473-7440 Ext. B-514

HOUSEKEEPERS Waitresses/Waiters, Diet Aides, Nursing Asst., Maint., P/T days, P/T nites. For info, call Angie at 247-6211, M-F, 9-3pm. Poha'i Nani, Kaneohe.

POSTAL JOBS \$18,392-\$67,125/yr. Now hiring. Call (1) 805-687-6000 ext P-4031 for current list.

TEACHER-Christian Preschool, M-F, 8am-Noon, Kailua. 262-6070.

EARN \$339.84 weekly! Easy, enjoyable, home assembly work, no exp. necessary. 24 hr. recording reveals details. 1-801-756-1401 dept. #46

HOUSEKEEPERS Waitresses/Waiters, Diet Aides, Nursing Asst., Maint., P/T days, P/T nites. For info, call Angie at 247-6211, M-F, 9-3pm. Poha'i Nani, Kaneohe.

PLANT Nursery worker Part time. Ph. 239-8987 Windward resident pref.

TEACHER-Christian Preschool, M-F, 8am-Noon, Kailua. 262-6070.

Family Motors

Special Financing! E3, E4 & Above!
\$99* DELIVERS, OAC

'84 PLYMOUTH FASTBACK 2-2 BVX447	\$1895	'84 TOYOTA TERCEL RXP227
'84 FORD LTD. 6 Cyl., 4 Dr.	\$2495	'83 CHEV CELEBRITY RSE583
'85 NISSAN SENTRA RWB768	\$2595	'85 PLYMOUTH RELIANT 2 Dr. BTU318
'81 DATSUN 280Z 7 BWO161	\$2995	'86 TOYOTA TERCEL CCS707
'84 TOYOTA CELICA CAA457	\$3995	'86 OLDS CIERA 4 Dr. XCZ900
'85 PONTIAC FIERO 6 Cyl. CAR868	\$4195	'88 FORD ESCORT 2 Dr. CUA680

SPECIAL MILITARY FINANCING
 NEW IN HAWAII!
 FAIR CREDIT - NO CREDIT - SO-SO CREDIT?
 WE ARE EXPERTS IN FINANCE
 INCLUDING BANKRUPTCIES!
 Sale Good Now! Till Oct. 4, 1990.
 in House Financing - Instant Delivery
 Plus Tax & Lic. Subject to Prior Sale - Call for Directions
 Open 7 Days a week 9 a.m.-6 p.m. Sundays 11 a.m.-4 p.m.
94-267 Farrington Hwy. at Leokane
 Waipahu, HI 96701 **Ph: 676-1600**

148 Water Sports Equipment

KAYAK RENTAL. Very stable touring, 1 & 2 man kayak. Karel's fiberglass. 789 Kailua Rd. 261-8424.

151 Pets/Everything

FREE Cat, to lovable home, orange & white, neutered. Call 261-9921 evenings.

FREE KITTENS Adorable. Black & white or all black. Call 261-4854.

FREE Neutered Lab. to a good home, with yard. Good w/kids. 423-4057

FREE Tabby cat 6 mo. to a good home, includes litter box. Call 486-1853

FREE adorable kittens to good home, 2 orange, 2 gray. 235-1714

IN need of qual, affordable vet care? Dr. Eric Pearson's Home Pet Svc. 235-8457 Islandwide.

MOLUCCAN Cockeratoo, tame, very quiet, \$1000 w/cage. 254-6174 lv.msg.

151 Pets/Everything

BABY COCKATIELS. Hand-fed, tame & adorable. Take them now & train them early. 235-8087 eves.

BUNNIES (10) 6 weeks old, various colors \$7 each. Call 689-5274.

COCKATIELS greys \$25; Whites \$30; starting to talk. Call 247-6733

CUTE free kittens, to loving homes. Please call 621-0806. 622-1120.

CAR TOYS UNLIMITED

(808) 942-4800 - 7 days

Featuring complete car alarm systems, customized to your needs. Expert installation. Installed at your home, office or anywhere on Oahu, or at our Manoa Shop.

Offer good Sept. 20-Oct. 15

10% MILITARY DISCOUNT W THIS AD
 FREE ON & OFF BASE DELIVERY AND INSTALLATION

CAR PAYMENTS A PROBLEM?

Is your loan pay-off greater than the value of your car?
 Unable to Sell or Trade?

Avoid Repossession...
 Save your Credit?

Auto leasing company can assume loans and leases on cars and trucks with underwritten guaranty

PACIFIC AUTO LEASE

247-0220

Burstin

WITH FALL VALUES!

'82 FORD GRANADA Auto, P/S BGR766	\$1995	'84 DODGE VISTA Auto BUV326	\$2995	'85 TOYOTA TERCEL 4 Dr., Auto, A/C, P/S BXX914	\$3995
'85 CHEVY CELEBRITY 4 Dr., Auto, AM/FM, A/C CET229	\$5295	'83 CADILLAC ELDORADO Auto, A/C, P/W AXB679	\$7495	'89 FORD T-BIRD Black, Auto, A/C, P/S CYD668	\$9995
'90 TOYOTA COROLLA 4 Dr., Grey, Auto, P/S, A/C DDS133	\$9995	'84 FORD BRONCO White, Auto DWX630	\$10,595	'88 TOYOTA CELICA Auto, P/S, A/C MMB428	\$10,595

All cars subject to prior sale Good now till Oct. 4, 1990

834-7118
 2819 Pukoua St.
 (Behind Gibson's Shopping Center)

TOYOTA CITY USED CAR CORRAL

USED 1990 TOYOTA COROLLA 4 DR. SEDANS

NOW \$9995



ONLY 15 TO CHOOSE FROM LOW MILEAGE!

\$900 down payment
 \$220¹¹/ mo. 60 mo. 13.5% APR

Payment includes sale price plus tax & license transfer fees, \$55.
 Subject to prior sale. Sale ends Oct. 4, 1990.

KAIMUKI TOYOTA

735-1737

A DIVISION OF SERVCO PACIFIC
 Corner of 6th Ave. & Waialae

151 Pets/Everything

PERSIAN Kittens, 2 white/1 Calico \$50, trained. Ph. 623-2526

PUPS to adult dogs. Pure bred/mixed breeds. Black labrador 4 mos. Longhair kitten 668-7222.

SIAMESE Kittens, 8 weeks, no papers, \$50-\$75. 254-2923

VETERINARY 24 Hr. Clinic needs F/T receptionist. Call 235-3634.

171 Motorcycles & Scooters

MOTORCYCLE wanted About 500cc, must run well. To \$1500 261-3145.

CYCLE TECH

Parts and Repairs. All makes, Motor Cycles, and Mopeds.
 Konohe 235-1531 (behind Jack in the Box)
 Pearl City 456-4608 (next to Pizzio Hut)

Buick

'83 REGAL. Great shape & runs good. \$1500/best offer. 262-8824. lv. msg.

Chevrolet

'70 MONTE Carlo 350, 4 bolt main. Good condition. \$850. Call 293-9347.

Chrysler

'86 SILVER Laser, 51,000 mi., warranty to 70,000, air, P/S, P/B, AM/FM stereo cass., tinted \$5700 or, great shape. Contact Tim 423-9889.

Datsun

'73 240Z not drivable at present - several new parts. Good trans. & motor. Good tires & rims. \$200 or best offer. Call 239-5566.

Dodge

'85 800ES Turbo, convertible, good buy at \$4700 474-8506 or 423-1361 EXT 181

Ford

'82 ACCORD 4 dr., runs good, moon roof, A/C, \$2400 239-9112 after 6

'83 CIVIC 2 dr., new tires, new battery, 53K mi., no rust, excel. cond. \$2150. Call 825-0800.

'87 ACCORD LXI, extended warranty available. \$6700 623-2526

173 Auto Announcement

EUROPACAR EXPRESS Military auto buying service. 533-3455

175 Vans & Campers 4 Wheel Drive

'71 VW Camper Van, runs good, needs work. \$1000/offer 239-4623 eve.

'72 VW Van, runs good, new tires, brakes, clutch \$600/best offer. 395-2480

'84 TOYOTA VAN 5 spd., P/S, A/C, FM. BTA494. \$5695. (D)

KAIMUKI TOYOTA 735-1737

'85 DODGE CARAVAN clean cond., great interior. \$7300. Ph. 487-3940.

'85 DODGE CARAVAN LE Lic. # CXV-211. Auto, air, P/S, & more. \$7295. 531-9922 (D)

PACIFIC OLDSMOBILE & GMC

'85 GMC JIMMY V8 auto, A/C, P/S, P/W, D/locks, AM/FM, cass. CVR-636. \$6995. (D). KAIMUKI TOYOTA 735-1737

176 Autos For Sale

'76 CONCORDA 89-900 \$3995
 '78 HONDA AC-935 \$4995
 '81 MAZDA GLC AC-940 \$1995
 '81 MAZDA GLC QAT-1095 \$995
 '81 HONDA 160 P/U CU-991 \$695
 '86 CATALINA OD-556 \$695
 '79 OLDS AC-406 \$795
 '88 ESCORT AM-808 \$795
 '74 COROLLA AM-305 \$795
 '76 FORD P/U AC-559 \$995
 '81 MAZDA GLC ED-946 \$995
 '83 DODGE VAN AC-575 \$1995
 '79 DODGE VAN EP-970 \$1195
 '80-81 MUSTANGS 1 on chrome OFFR 64-744 Konohe Hwy Dr. bonded dealer Lic. # 383 SELL & BUY TRADE & CONSIGN 235-9999

Nissan

'87 SENTRA 4 dr. sdn. auto, A/C, P/S, radio. KDX-744. \$4995. (D). KAIMUKI TOYOTA 735-1737

Mazda

'82 RX7 5 spd. rebuilt motor, new paint & clutch. HOT looker & good runner. Mechanically sound, am/fm cass Blue book \$6300. sacrifice first \$2875 takes Call Chris 235-5881 days, 261-7198 eves & weekends

Oldsmobile

'76 CUTLASS auto., 2 dr., air, stereo, good shape \$1000/offer. Call 622-1210 leave message.

'83 CUSTOM CRUISER Lic. # CNY-280. Auto, P/S, air, P/B, radio & more. \$7,795. 531-9922 D.

PACIFIC OLDSMOBILE & GMC

Plymouth

'80 COLT GL H/B, 5 spd., air, P/S, P/B, AM/FM, silver 3400 mi., excl. cond. \$6975. 836-2523

Pontiac

'87 GRAND AM Lic. # CPS-949. Auto, air, P/S, P/B, radio & more. \$5,595. 531-9922 (D).

PACIFIC OLDSMOBILE & GMC

BANK Repol '88 Pontiac. Call Michelle 525-8216. M-Th 8-4, Fri. 8-5:30

Toyota

'82 STARLETT. Runs & looks great. Low mileage, gas saver \$1095. Call Kay 261-3656

'83 CELICA, KMCA5 \$1500 or offer. Call 254-5597.

'88 COROLLA 2 dr., A/C, coupe, auto, P/S, AM/FM. CUG820. \$6795. (D). KAIMUKI TOYOTA 735-1737

BMW

'85 4 DOOR 1800. Rebuilt 1800 engine \$500. Call 281-6766.

'85 325E 5 spd., A/C, sunroof clean. \$12,500/offer. Roy 621-9036 leave message

Mitsubishi

'88 MIRAGE 4 dr., AM/FM/Cass., A/C. \$5500/offer. Karen h.m. 836-4976 wr 474-4708

Nissan

'85 MAXIMA 4 dr. sdn. full power. BYX712. \$6595. (D). KAIMUKI TOYOTA 735-1737

Buick

'83 ESTATE WAGON Lic. # CRB-077. Auto, air, P/S, P/B, & more. \$4,995. 531-9922 (D).

PACIFIC OLDSMOBILE & GMC

INTERCEPT BIG SAVINGS

Show us this AD and **SCORE \$200 OFF** any car below

'84 OLDS DELTA 88 Lic #CFW-852 4 DR., FULLY EQUIPPED.	\$3395
'84 FORD T-BIRD Lic #CJP-096 Auto, P/S, AIR & MORE	\$3995
'86 FORD MUSTANG Lic #HJF-297 Auto, V6, AIR & MORE	\$4995
'85 OLDS CIERA Lic #CAW-592 4 DR., LOTS OF EXTRAS	\$5295
'89 NISSAN SENTRA Lic #CWU-837 Auto, AIR, P/S & MORE	\$6295
'88 PONTIAC FIERO Lic #CTY-400 LOADED, EXTRA CLEAN!	\$7595
'85 PRELUDE Lic #BYX-257 5 SPD., AIR, LOW MILES	\$8495
'88 FORD RANGER XLT EXT. CAB 4x4 Lic #DFY-158 LIFTED W/TIRES & RIMS	\$10,295
'81 MERCEDES BENZ 300D Lic #BFF-782 4 DR., MUST SEE, CLEAN!	\$10,995
'89 CHEVY IROC CONVERTIBLE Lic #CXX-619 V6, AUTO, AIR, P/S & MORE.	\$16,995

PACIFIC OLDSMOBILE & GMC

531-9922
 809 S. King St.
 *Plus tax license and doc. fees
 *Subject to prior sale

TRUCKS And TRAYS

Wahiawa 621-0020

We are Central Oahu's Used Truck & Car Specialists
 Deal directly with the management
 Stop by our showroom today and see our car of the month

'80 TOYOTA SK 5 H/B 5 Speed, Great Shape. Great Running ABV372	\$2200
'84 PONTIAC FIERO Super Clean, Racing Red BXB647	\$3900
'86 MAZDA P/U Great Shape, Great Running, W/Camper Top DFP761	\$3900
'88 HYUNDAI EXCEL 4 Dr., Stick, Stereo, Low Miles CYT240	\$4200
'80 VW GOLF Auto, 4 Dr., A/C, Stereo, P/S, Low Miles MKP935	\$4500
'88 RENAULT MEDALLION 4 Dr., A/C, Stereo, Low Miles. Save \$ CPX772	\$5300
'86 FORD 150 A/C, Stereo, Tool Box, Good Shape 5C6912	\$7500
'86 MUSTANG GT 5.0, A/C, 5 Speed, Stereo, Tilt, Cruise, Alloys BGT665	\$7800
'85 CHEVY SILVERADO 3/4 TON P/U 4x4 A/C, Tilt, Clean, From Texas 6260-AV	\$10,500

961 Center St. Wahiawa

RAINBOW CHEVROLET COURTESY PONTIAC

630 PIKOU ST. HONOLULU
 522-5400

WANTED: All Active Military Members Stationed in Hawaii

REWARD: We Will Reward The "WANTED" \$200 To Own Our Cars! See Coupon Below For Details.

sale good Oct. 4, 1990
 Clip & Present Coupon After deal is completed and get \$200 cash.
 Military ID required for use of coupon
 This coupon is only valid on any car purchase.

COUPON \$200 ADDITIONAL BONUS FOR MILITARY

Limit (1) per customer

'90 PONTIAC LEMANS AERO CPE

Recd. Bucket Seats, R/Wind Defogger, 1.6 OHC Engine, Full Wheel Covers, Halogen Headlamps

P-0760 **\$6995**

'90 PONTIAC SUNBIRD GT TURBO

165 hp, Turbo Engine, GT Plus 4 Tires, Compact Disc, Player, Firmats, T-Steer., A/C, Cruise

P-0611 **\$11,895**

'91 PONTIAC FIREBIRD CPE

3.1 V-6, Auto Trans, P/Ant., AM/FM Cass., Gauges, T/Steer., P/Steer., P/Brakes

P-1020 **\$10,995**

'90 PONTIAC 6000 LE

Auto, A/C, AM/FM Cass., Cruise Cont., Int. Wipers, P/W, T/Steer., P/Steer., P/Brakes

P-0698 **\$11,895**

'90 PONTIAC GRANDAM LE CPE

Foglites, AM/FM Cass., 195/70 R14, Tilt Steer, Turbo Wheels, Int. Wipers, Spt. Pkg., P/Steer., P/Brakes

P-0696 **\$10,895**

USED CAR SPECIALS

'76 BUICK RIVIERA 2 DR CPE A6076	\$395
'81 PLYMOUTH RELIANT 2 DR BF728	\$495
'77 VW VAN EA179	\$695
'79 FORD PINTO S/W DGW758	\$995
'83 PLYMOUTH HORIZON 4 DR CUYU521	\$1295
'83 FORD ESCORT S/W DGW760	\$1395
'84 FORD TEMPO GL 4 DR BPK580	\$2495
'79 DODGE B200 W/SEATS DCW759	\$2495
'83 BUICK 950 TRUCK AGU801	\$2595
'86 NISSAN STANZA WAGON C0P83	\$2895
'84 PONTIAC FIERO SL CPH123	\$3295
'78 CHEVROLET EL CAMINO 78T85	\$3595
'85 DODGE RAM 50 4x4 TRUCK BSP913	\$4995
'85 PONTIAC TRANS AM CAW342	\$4995
'84 TOYOTA CELICA GT CPH133	\$4995
'86 OLDS CUTLASS SUPREME 2 DR MKR868	\$4995
'88 OLDS CUTLASS SUPREME 2 DR MKR868	\$4995

Prices include any & all factory rebates, not combinable with special finance rates. Includes special GMAC First Time Buyers Assistance.
 Rebates & assistance on selected models. Subject to prior sale, plus tax, lic. & \$129 doc fee. Good now until Oct. 4, 1990.
 Cars not exactly as shown.

RAINBOW CHEVROLET

GEO

STORE HOURS MON-SAT. 8:30 a.m.-9:00 p.m. SUNDAY 9:00 a.m.-6:00 p.m.

CAR PAYMENT RELIEF!

Is your Loan pay-off greater than the value of your car?
 Unable to Sell or Trade?

AVOID REPOSSESSION, SAVE YOUR CREDIT!

Financial Firm can take-over Auto Loans & Leases

CREDIT LINE SERVICES

521-5944

NEW CARS & TRUCKS COST LESS

For prices please call or write
 Since 1946
 Roberts and Redfield

Oregon Dealer #1649 (503) 295-5556 1313 W. Burnside Portland, Oregon 97209

Toyota	'88 COROLLA 4 dr. S/W, auto, A/C, P/S, AM/FM, CTG270. (D).	KAIMUKI TOYOTA 735-1737
Volkswagen	'75 SCIROCCO, Best offer, needs distributor. Call Mike anytime at 259-9622.	

THE CUTTER TEAM

HAWAII'S DRIVING FORCE

BANK FINANCING AVAILABLE
ALL STORES OPEN
8:30 A.M.-9 P.M.
SUN. 9 A.M.-6 P.M.

★SPECIAL MILITARY FINANCING
WITH FORD CREDIT, CHRYSLER CREDIT AND GMAC
★TAKE IT WITH YOU WHEN YOU LEAVE★NO HASSLES—NO RED TAPE

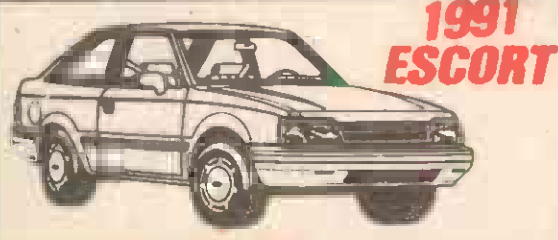
CUTTER FORD-ISUZU
98-015 Kamehameha Hwy.
AIEA
487-3811

CUTTER CHRYSLER-PLYMOUTH DODGE JEEP/EAGLE
735 Dillingham Blvd.
HONOLULU
842-6300

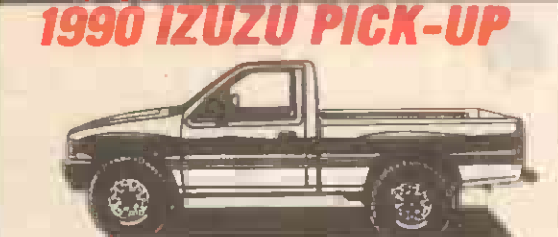
CUTTER DODGE
2 GIANT LOCATIONS!
921 Kam Hwy. PEARL CITY
455-1071
735 Dillingham Blvd.
842-6300

CUTTER MITSUBISHI
94-149 Farrington Hwy.
WAIPAHU
671-2626
Across from Ginn

WHERE YOU MAKE THE DEALS!
INTRO SPECIAL



#1 SELLER IN AMERICA \$6995



UNBELIEVABLE VALUE \$6495
2.3 L, 5 Sp, Mirror #2644

MORE GREAT SPECIALS BUY NOW BELOW FACTORY INVOICE ON ALL SALE VEHICLES

- '90 Escort Wagon \$8895
- '90 Tempo GL \$8995
- '90 Mustang LX \$9495
- '90 F150 Pick-Up \$10,495
- '90 Impulse \$11,995
- '90 Taurus 4 Dr. \$12,495
- '90 Aerostar \$12,995
- '90 T-Bird \$13,595

SUPER SPECIALS

- '77 TOYOTA COROLLA \$395
- '79 FORD T-BIRD \$495
- '78 ECONOLINE VAN \$795
- '84 MONTE CARLO \$3495
- '87 CHEVY CELEBRITY \$4795
- '85 FORD MUSTANG GT \$5495
- '86 FORD AEROSTAR XL \$6395
- '87 FORD TAURUS \$6395
- '87 MITSUBISHI GALANT \$6995
- '89 FORD TEMPO LX \$6995
- '87 PONTIAC GRAND AM SE \$7995
- '89 COLT WAGON \$7995
- '88 DODGE DAKOTA \$8195
- '87 NISSAN PATHFINDER 4x4 \$8995
- '85 VW GOLF \$9995
- '88 FORD TAURUS GL \$10,495
- '88 MERCURY COUGAR LS \$10,995
- '87 ACURA LEGEND \$15,795

Prices include all factory rebates. Plus tax, lic. & \$129 doc fees. Sale ends Sept. 30, 1990

WHAT A DEAL!

0.0% FINANCING OR UP TO \$2000 REBATES

PLUS THESE SPECIAL CLEARANCE SAVINGS!

NEW 1990 Plymouth Colt \$5995
4 Cyl., Front Wheel Drive, Independent Suspension #15444

- '90 EAGLE SUMMIT \$7995
- '90 PLYMOUTH COLT WGN \$8995
- '90 PLYMOUTH SUNDANCE \$9995
- '90 PLYMOUTH SUNDANCE \$9995
- 90 PLYMOUTH SUNDANCE \$10,695
- '90 PLYMOUTH ACCLAIM \$10,995
- '89 JEEP COMANCHE 4x4 \$11,495
- '90 PLYMOUTH COLT VISTA \$11,595
- '89 JEEP COMANCHE 4x4 \$11,995
- '90 EAGLE PREMIER LX \$12,595
- '90 CHRYSLER LEBARON \$12,995
- '90 JEEP CHEROKEE \$13,995
- '90 CHRYSLER NEW YORKER \$16,595
- '90 PLYMOUTH VOYAGER \$16,795
- '90 PLYMOUTH GRAND VOYAGER \$16,995
- '90 CHRYSLER LEBARON CONV. \$17,995
- '90 CHRYSLER NEW YORKER LANDAU \$18,996
- '90 CHRYSLER TOWN & COUNTRY \$18,995
- '90 CHRYSLER IMPERIAL \$21,995
- '90 JEEP WAGONEER \$24,995

Prices include any & all applicable rebates. Not combinable with special finance rates. Subject to prior sale. Plus tax, lic. & \$129 doc. fees. Sale ends Oct. 4, 1990.

WHAT A DEAL!

- NEW COLT** NOW \$6377 (Was \$9046, Save \$2669, #10941)
- NEW DAKOTA P/U** NOW \$7660 (Was \$11,540, Save \$3880, #11010)
- SHADOW ES** NOW \$10,875 (Was \$15,434, Save \$4559, Demo #10556)
- NEW DYNASTY** NOW \$12,765 (Was \$17,574, Save \$4809, #10364)
- NEW MONOCO LE** NOW \$14,907 (Was \$19,384, Save \$4477, #10646)
- NEW SPIRIT ES** NOW \$13,342 (Was \$17,066, Save \$3724, Demo #10810)
- 4x4 PICK-UP** NOW \$11,366 (Was \$14,599, Save \$3233, #10915)
- NEW CARAVAN** NOW \$12,926 (Was \$15,510, Save \$2584, #11005)

AS LOW AS 0.00% FINANCING on selected models OR UP TO \$2000 REBATE

USED CARS SPECIAL

- '78 FORD 15 PASS. CLUB WAGON \$1595
- '84 DODGE COLT \$1595
- '85 NISSAN SENTRA \$1995
- '85 FORD ESCORT L \$1795
- '85 PLYMOUTH CARAVELLE \$2895
- '85 FORD TEMPO \$2995
- '84 FORD T-BIRD \$3995
- '89 DODGE OMNI \$4995
- '89 PRECIS LS \$4995
- '89 FORD ESCORT LX \$5895
- '89 NISSAN SENTRA \$5995

#1 MITSUBISHI DEALER ENTIRE STATE OF HAWAII DEMO MADNESS SALE

- MITSUBISHI '90 ECLIPSE GS DOHC \$12,988
- MITSUBISHI '90 MONTERO 4x4 RS \$14,588
- MITSUBISHI '90 ECLIPSE GSX \$14,988
- MITSUBISHI '90 7 PASSENGER LS WAGON \$15,988

SPECIAL PURCHASE WHY PAY NEW CAR PRICES WHEN YOU CAN OWN A

'89 MITSUBISHI 4 DR. LS \$5488
Air cond, auto trans, p/steer, much more

C-R-E-D-I-T 671-2626

- '79 HONDA CIVIC \$488
- '82 PLYMOUTH CHAMP \$788
- '83 BUICK CENTURY \$1288
- '84 FORD ESCORT S/W \$1988
- '82 FORD THUNDERBIRD \$1988
- '85 CHEVY CAVALIER \$2988
- '85 FORD CR. VICTORIA S/W \$2988
- '84 PONTIAC FIREBIRD \$2988
- '83 HONDA ACCORD 4 DR \$3488
- '84 CHEVY CELEBRITY \$3588
- '84 MAZDA 626 COUPE \$4588
- '87 TOYOTA COROLLA \$4988
- '89 MAZDA 323 \$4988
- '89 DODGE COLT S/W \$5988
- '88 CHEVY CELEBRITY \$6988
- '90 DODGE OMNI \$6988
- '88 FORD MUSTANG GT \$7988
- '90 NISSAN EX/CAB \$8988
- '88 FORD SUPER VAN \$11,988

All prices & discounts include any and all applicable rebates. Cars subject to prior sale. Prices plus tax, lic. & \$129 doc. fees. Sale ends 10/4/90

Push the right buttons.



(Plus area code and number)

Whenever you make an *AT&T Calling Card* or *Collect Call* from public phones on base.

Long distance calling from public phones on base is changing. To ensure that your call will be billed at consistently low AT&T rates, just dial the easy AT&T access code when making *AT&T Calling Card* or collect calls on base. Simply dial 10 + ATT + 0 before the Area Code and Number you're calling. It's that easy.

Don't give up the quality *AT&T Long Distance Service* you've come to depend on. Push the right buttons, and keep AT&T right at your fingertips.

To order an *AT&T Military Calling Card* or for more information call:

1 800 551-3131 Ext. 6232



AT&T
The right choice.