

FUJITSU

Expanding your workspace

Mini-PC's here to empower you to take
up your challenges, not your space.



shaping tomorrow with you

Contents

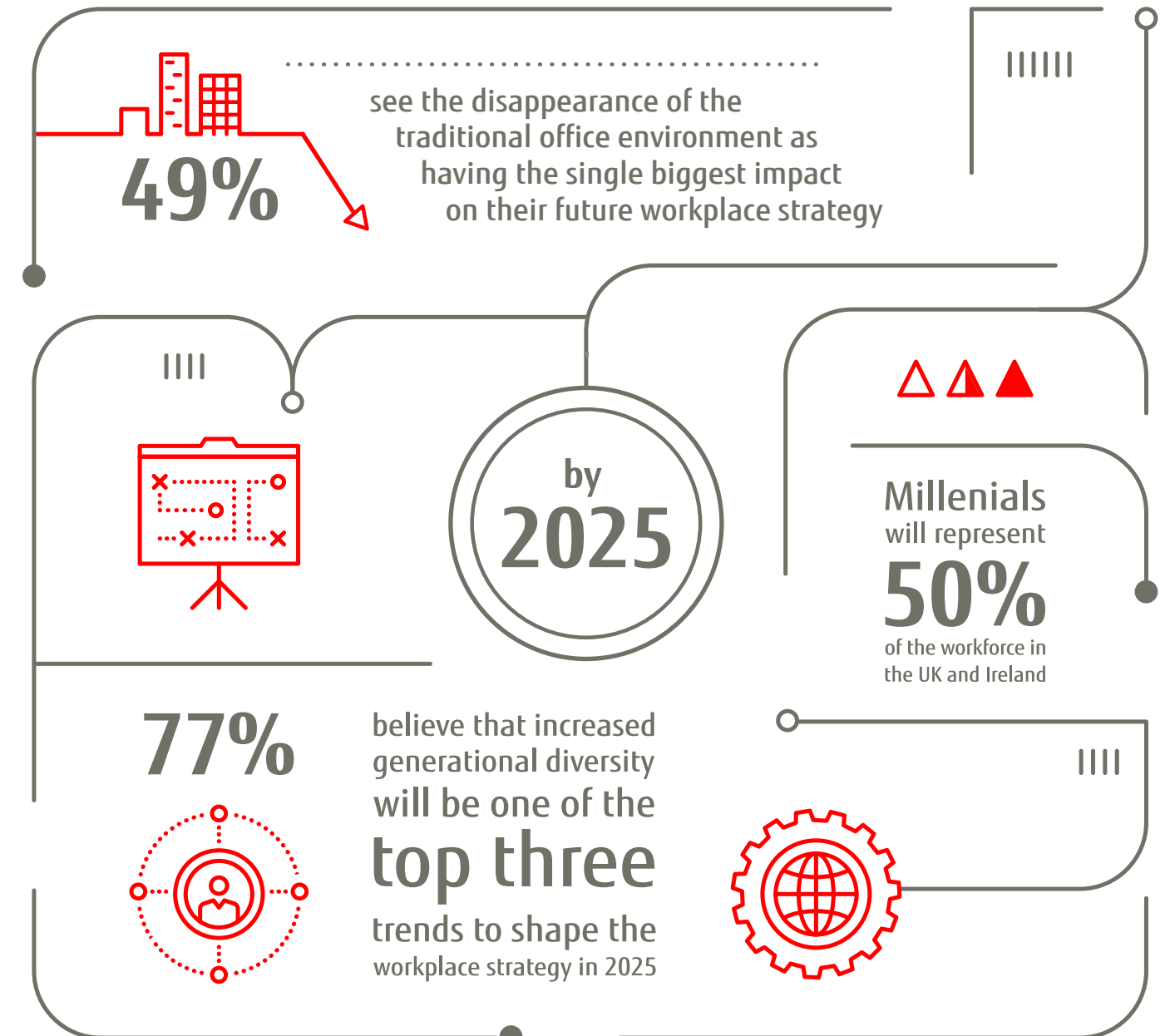
- 03 Why change now?
- 04 The Future Workplace
- 05 Why Mini-PC's?
- 06 Something for everyone
- 08 Our Mini-PC Portfolio
- 12 Mini-PC Combinations, Solutions & Accessories
- 16 Why Fujitsu?



Why change now?

For organisations in every field a chasm is opening up. So, what are the key challenges?

New demographic, technological and security pressures are undermining the existing foundations of organisations. The gap is widening between those committed to open, collaborative and flexible working, and those that are not.



The Future Workplace.

Empower your people to connect, collaborate, and innovate.

Almost daily, new optimized tools, applications and services emerge to compete for our attention. In the quest to gain a competitive edge, our customers and employees are eager to embrace this new technology. In addition, technology is increasingly blurring the lines between the corporate and private worlds. Adding to this already complex mix, different generations with differing expectations are currently active in the workforce.

To enable such “human empowerment” as well as meet employee needs and expectations, the approach to enterprise IT must change otherwise customers and talent will find their wishes addressed faster elsewhere and in ways designed specifically for them. Technological advancements have truly enabled Mini-PC's to allow workplaces to operate in a streamlined fashion, bringing improved security through clean clutter-free workspaces and enhanced performance, without impacting on the aesthetic of the environment they sit in.

Modern employees expect a more social, consumer-style working experience. Industry analysts, Gartner, have defined the “digital workplace” as a business strategy to boost employee engagement and agility through a more consumerized work environment.

There are three underlying strands to this strategy:

Engaging employees

Re-imagining the workplace and its technology

Changing nature of work

So, how can a Mini-PC help deliver on these strands?

This is the question we are here to answer.



Why Mini-PC's?

The world is changing. Meet the Mini-PC range that's empowering and engaging the new world.



Easy to set up, wrap up and move from place to place.



Easy and cost-effective to use, maintain and upgrade.



Perfect for permanent or temporary offices, pop-up sites and smarter working.

Big, bulky tower PC's are making way for compact powerful Mini-PC's – like the ESPRIMO range from Fujitsu. It's partly about doing more with less. But Mini-PC's are also a great fit for the ways most people work today.

You get all the power and productivity you expect from a full-size machine with a smaller footprint and an easier user experience.

And when your PC is small, powerful and flexible, you can meet the changing needs of your business – whatever happens.

Something for everyone

Our Mini-PC's are powerful despite their small size, with the ability to gobble up everyday office tasks and run every type of application. They're ideal for modern workplaces where clean, clutter-free environments are important for productivity and collaboration whether that be in offices, meeting rooms or breakout spaces.

Mini-PC's offer the ultimate in flexibility and usability for the way you work, with options from fixed to mobile setup, horizontal or vertical placement, hidden mounting and an all-in-one PC experience. Each model in the range is designed for low noise and low heat, giving significant energy savings and a greener footprint.

At home anywhere, ESPRIMO Mini-PC's are the workhorses that make your lives easier. Mini-PCs can be applied in many different areas, from the average workstation to digital signage, billboards, public transport, conference centres, meeting rooms and data acquisition within factories or large organisations with critical data points. A Mini-PC can be used in almost every scenario and environment.



Our Mini-PC Portfolio

Powerful, space-saving and stylish.

The ESPRIMO business Mini-PC's, such as the G558, Q558 and Q958, deliver more PC per cm³ than traditional desktops.

Human-centric

- Whisper quiet PC's
- Best-in-class noise emission
- Neat, ergonomic design
- Custom-built PC

Business-centric

- Easy serviceability
- Advanced manageability
- Performance-focused

Security

- Unique PalmSecure™ technology
- Hard disk encryption & EraseDisk
- TPM and SmartCard reader
- Workplace Protect and Workplace Manage

Green / Eco-friendly

- Lowest power consumption
- Energy-efficient PSUs and Low Power Active Mode
- Most energy-efficient desktops
- Halogen-free, PVC-free



ESPRIMO G558

Fujitsu's smallest PC, with a 0.86l volume.
This product truly is mighty and mini!

- Great for flexible, clutter-free offices and embedded appliances
- Entry-level, ultra-compact Mini-PC
- Flexible mounting options - attach to displays, wall mount, under table mount
- Low noise and energy consumption
- Single USB Type-C power and display connector
- Switch PC on and off through monitor power bottom (FUJITSU Display P24-9 TE) or keyboard
- Optional VESA mount

ESPRIMO Q558

- Elegant, compact device for receptions or offices where space saving is business-critical
- Fully equipped, all-round Mini-PC with volume under 2l
- Integrated optical drive and power supply
- Zero noise (solid state disk required); fan stop in standard operations
- Low energy consumption
- Optional Smartcard reader
- Optional VESA mount
- Tool-less opening and access to all components

ESPRIMO Q958

- Mini-PC best suited for meeting room conferencing solution **ESPRIMO MRE (Meeting Room Edition)**
- Powerful, fully equipped mini PC with a volume of ~2.0 liters – based on standard desktop technology
- Integrated optical drive and power supply
- Zero noise operation and low energy consumption
- Additional security features - optional Palm vein authentication combined with PalmSecure™ technology provides unrivaled security; SmartCard reader (optional)
- Integrated VESA mount
- Intel vPro technology plus DeskView suite

Where Mini-PC's are making a difference.

At Fujitsu, we work across the globe to help customers realise their technological and digital ambitions. With the modern workplace taking a drastic shift and requiring more space and security, we have worked with the following companies to really change their workspace using our range of Mini-PC's.



Der Orthopädie-Schuhmacher >

The ESPRIMO Q Mini-PC has been a major contributory factor to this German orthopaedic shoemaker. Enabling them to more effectively manage their business infrastructure.

"The ESPRIMO Q is a great fit for our requirements profile, therefore it is the ideal choice for our company. The Mini-PC is very powerful, and makes short work of all administration tasks"

- Stephan Riedl, Owner Der Orthopädie-Schuhmacher

Turkish Economy Bank >

The Financial industry is consistently changing and under much scrutiny for security practices.

The Turkish Economy Bank needed a solution that was flexible enough to integrate with and connect to many other systems and pieces of infrastructure whilst also being extremely secure. Fujitsu brought this together by using the ESPRIMO Q Mini-PC's along with PalmSecure technology to drive forward security and efficiencies within cash dispensers.

"We needed a flexible computing platform that could integrate with all the various components. Fujitsu could also supply palm-based security and cash dispensers, making it a one stop shop for our technology needs."

- Özgür Bilgin, Payment Systems Software Development Manager, TEB



Provincia Religiosa di San Pietro >

Working in healthcare requires a number of high-level necessities for public safety. Security, Hygiene and Energy Efficiency are just three of these areas that were able to be addressed for Provincia Religiosa di San Pietro hospital in Italy by the use of the ESPRIMO Q Mini-PC's and FUJITSU Storage ETERNUS infrastructure. These devices replaced a legacy estate of outdated infrastructure and kick-started the digital transformation of these hospitals with around 600 new Fujitsu Desktop clients which are more efficient, secure and energy-saving.

"Performance, form factor, energy consumption, and the option to customize machines were the factors that persuaded us to adopt the Fujitsu customer solution, with the support of PCS Group."

- Paolo Franchi, Systems Manager Provincia Religiosa di San Pietro



Mini-PC Combinations and Solutions

With each ESPRIMO Mini-PC comes an unrivalled amount of flexibility. With this in mind, Fujitsu have developed a number of combinations and solutions for specific industries.

These can be taken as examples of where we have used our experience and expertise in these sectors to provide what is an ideal scenario for your industry. This doesn't restrict us to just these combinations though, if you see something that you believe would work for your business then we can make sure that happens for you.

Public Office Working Desk:

FUJITSU ESPRIMO G558 and VESA Kit with Port Replicator, 2x 24" FUJITSU Displays (**P24-9 TE** and **B24-9 TE** connected via "Daisy Chain") and keyboard (**KB950**).

There is an increasing trend in both shared and open workspaces, whether these are owned or leased by companies everyone is looking at ways to ensure they have a powerful and adaptable workspace for anyone that may need it. This setup provides exactly that. Using the G558 and port replicator to enable easy access via a number of ports and connections and using the dual display to enable greater efficiency and clarity of what the user is working on, being able to easily utilise the screens to work on multiple applications at any one time.





Retail Banking Working Desk:

FUJITSU ESPRIMO Q558 with Universal Monitor Stand, P24-8 WS Pro and Keyboard.

We believe this combination delivers everything a retail-banking organisation would need for their tellers. It provides increased security in the shape of Fujitsu's PalmSecure technology on the keyboard, enabling the teller to unlock their station using their unique palm signature whilst also providing space-saving and secure credentials in the Mini-PC and Display combination. Leaving you with peace of mind that the tellers can operate securely & safely.

Mini-PC Accessories:

At Fujitsu, we understand that not every business requires a fully-tailored solution or combination. With this in mind we have developed a wide range of accessories that can be purchased separately in order to build on the necessary requirements of the business at that point in time. All of these accessories are built to function with our Mini-PC range and keep security and clutter-free workplaces as their key selling points.



- **Universal Monitor Stand.**
Order Code: S26361-F2601-L700.



- **Mounting Kit for Height Adjustable FUJITSU Displays.**
Order code: S26361-F2542-L452



- **Displays:** P24-9 TE, B34-9 UE, P27-8 TS UHD, P24-8 TE Pro, P24-8 WS Neo



- **Connectivity options**



- **Keyboards**

Additional Accessories:

- VESA Mounting Kit ESPRIMO G (Order code: S26361-F2542-E453 resp. L453)
- USB Type-C to USB Type-A Adapter (Order code: S26391-F6058-L100)
- USB Type-C to VGA Adapter (Order code: S26391-F6058-L203)
- USB Type-C to DisplayPort Adapter (Order code: S26391-F6058-L201)
- USB Type-C to Gb-LAN Adapter (Order code: S26391-F6058-L301)
- FUJITSU Accessories USB Port Replicator PR09 (Order code: S26391-F6007-L500)
- VESA Subadapter Velcro® strap (Order Code: S26361-F2601-L200)

Meeting Room Solution:

ESPRIMO MRE (Meeting Room Edition) – it's a solution based on ESPRIMO Q mini Mini-PC (Q958), powered by Intel Unite®





Why Fujitsu?

Fujitsu specialise in creating the workplaces of tomorrow. We aim to enable your people to do their jobs better, empowering them to deliver results for you.

Our solutions allow you to ensure employees can make the most of their day by using equipment that is compact but robust, flexible but reliable and won't impact on a company's lifestyle or environmental values. In short, they want equipment that is 'Mini & Mighty'.

Fujitsu's strength in the Digital Workplace arena lies in our ability to deliver innovative, secure managed workplace solutions to meet both technical and business requirements, in a modular delivery. We aim to create the workplaces of tomorrow with you.

Fujitsu's philosophy of Human Centric Innovation has built an ecosystem from the worlds of academia, startups, strategic partners, niche vendors and other influencers that drive co-creation and rapid innovation for our customers.

Shared insights from these groups mean that the workplace is effectively co-created, ensuring that your people receive a simple, intuitive, consistent, consumer-like experience.



For more information:
<https://workplace.global.fujitsu.com>

Published by

Fujitsu Technology Solutions
Mies-van-der-Rohe-Strasse 8,
80807 Munich, Germany
Copyright: Fujitsu 2019

Unclassified.

Copyrights

All rights reserved, including intellectual property rights. Changes to technical data reserved. Delivery subject to availability. Any liability that the data and illustrations are complete, actual or correct is excluded. Designations may be trademarks and/or copyrights of the respective manufacturer, the use of which by third parties for their own purposes may infringe the rights of such owner. For further information see www.fujitsu.com/terms
Copyright © Fujitsu Technology Solutions

Disclaimer

Technical data are subject to modification and delivery subject to availability. Any liability that the data and illustrations are complete, actual or correct is excluded. Designations may be trademarks and/or copyrights of the respective manufacturer, the use of which by third parties for their own purposes may infringe the rights of such owner. Intel, the Intel logo, Intel Core, Intel vPro, Core Inside and vPro Inside are trademarks of Intel Corporation or its subsidiaries in the U.S. and/or other countries.