

INTEL[®] NUC Product Catalog

May 2021



All information provided here is subject to change without notice. Contact your Intel representative to obtain the latest Intel product specifications and roadmaps.

Table of Contents

General Links

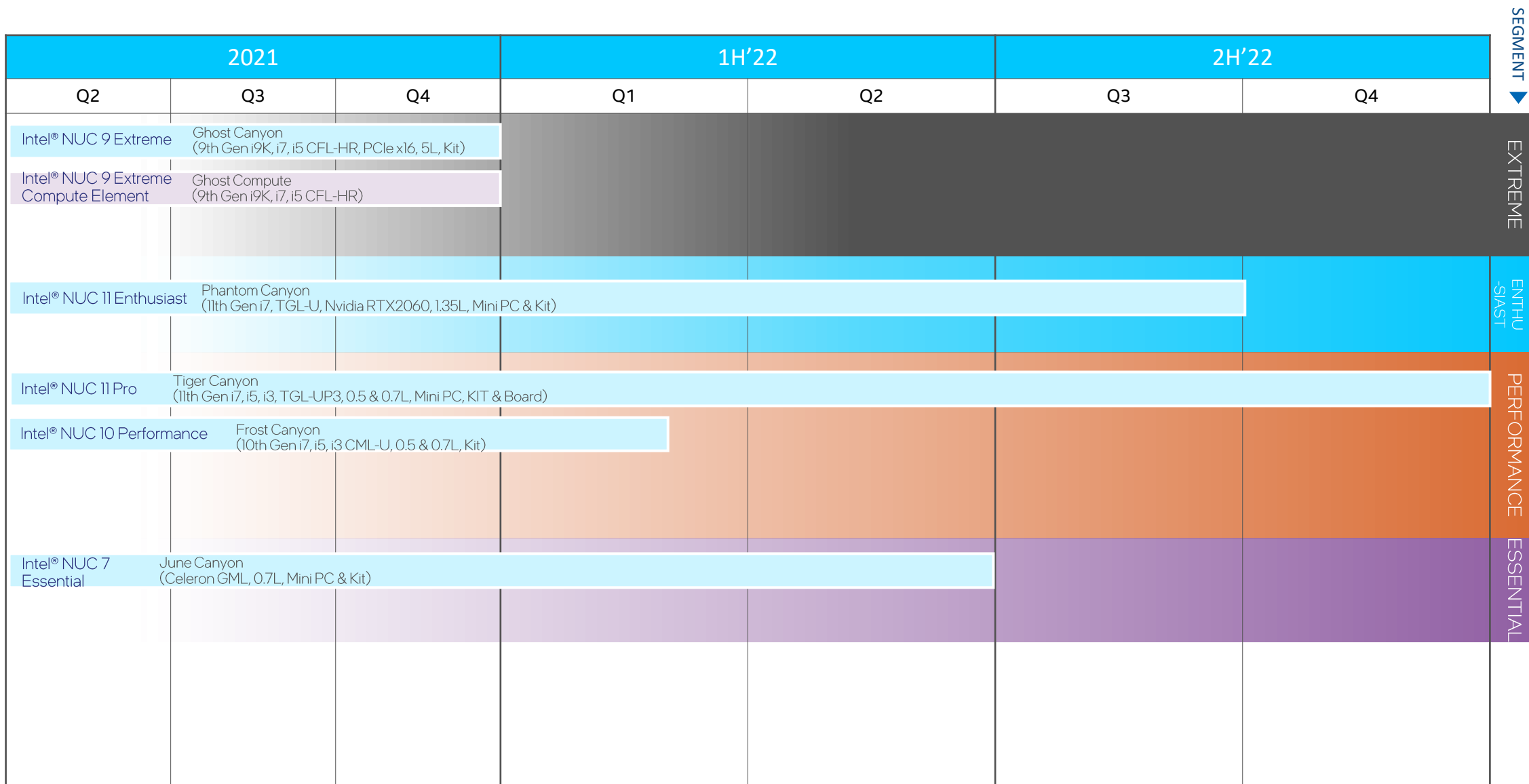
- [Intel® NUC Roadmap](#)
- [AC Cords](#)
- [Backup](#)

Product Links

- [Intel® NUC Element](#)
- [Intel® NUC Extreme](#)
- [Intel® NUC Enthusiast](#)
- [Intel® NUC Performance](#)
- [Intel® NUC Pro](#)
- [Intel® NUC Rugged](#)
- [Intel® NUC Essential](#)
- [Intel® NUC Laptop Kit Performance](#)

Intel® NUC Roadmap – 1/2

Intel® NUC Products
Intel® NUC Element Products



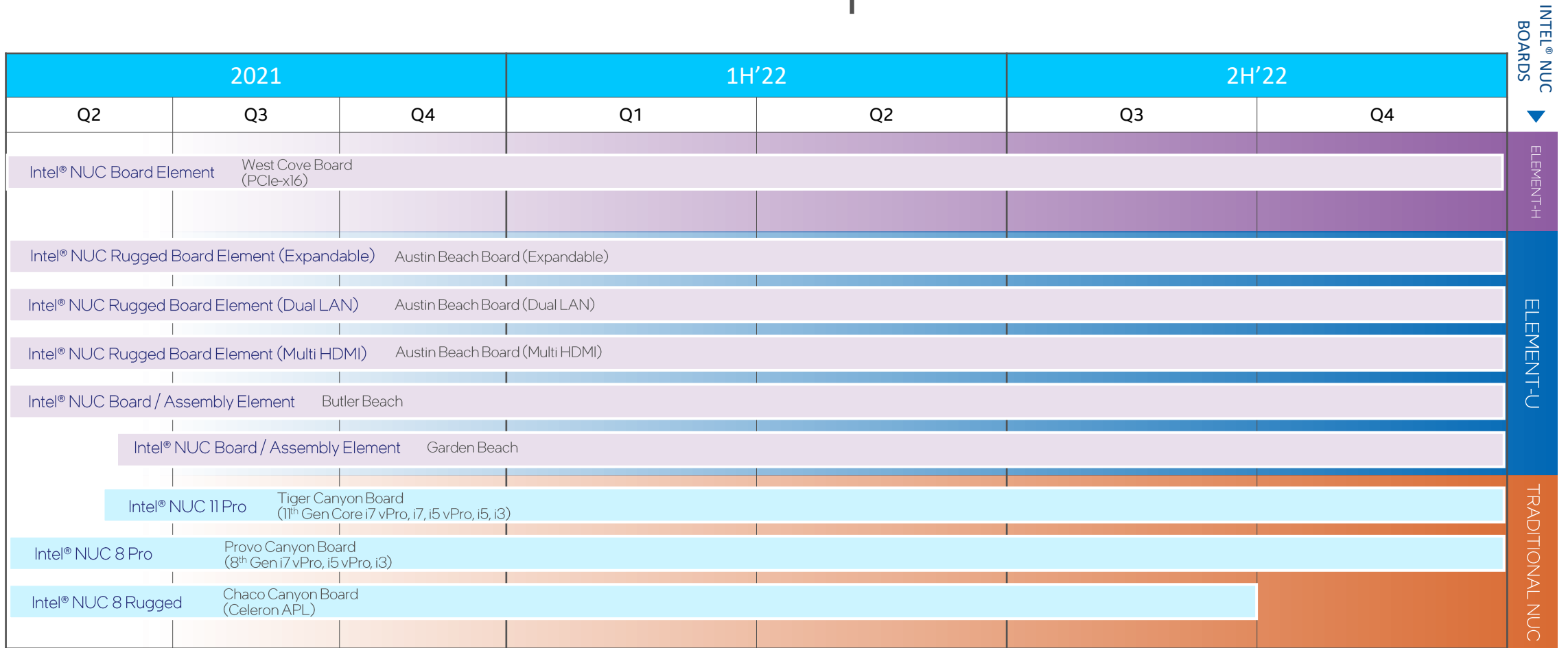
Intel® NUC Roadmap – 2/2

Intel® NUC Products
Intel® NUC Element Products

2021			1H'22		2H'22		SEGMENT ▼
Q2	Q3	Q4	Q1	Q2	Q3	Q4	
Intel® NUC 9 Pro	Quartz Canyon (Xeon, i7 vPro CFL-HR, PCIe x16, 5.0L, Kit)						PRO
Intel® NUC 9 Pro Compute Element (H-Series)		Quartz Compute Element (Xeon, i7 vPro CFL-HR)					
Intel® NUC 11 Pro	Tiger Canyon (11th Gen Core i7 vPro, i7, i5 vPro, i5, i3 TGL-UP3, 0.5 & 0.7L, Mini PC, Kit & Board)						
Intel® NUC 8 Pro	Provo Canyon (8th Gen i7 vPro, i5 vPro, i3 WHL-U, 0.5 & 0.7L, Kit & Board)						
Intel® NUC 11 Compute Element (U-Series)		Elk Bay Compute Element (11th Gen Core i7 vPro, i7, i5 vPro, i5, i3, Celeron TGL-UP3)					
Intel® NUC 8 Compute Element (U-Series)		Chandler Bay Compute Element (8th Gen Core i7 vPro, i7, i5 vPro, i5, i3, Pentium, Celeron WHL-U)					
Intel® NUC Pro Chassis Element (U-Series)		Fort Beach (Base, Video Capture & Audio)					
Intel® NUC 8 Rugged	Chaco Canyon (Celeron APL, 3.5" SBC, Kit & Board)						RUGGED
Intel® NUC Rugged Chassis/Board Element (U-Series)		(Expandable, Dual LAN, and Multi HDMI) Austin Beach					

Intel® NUC Board Roadmap

Intel® NUC Products
Intel® NUC Element Products



Intel® NUC Laptop Kit Roadmap

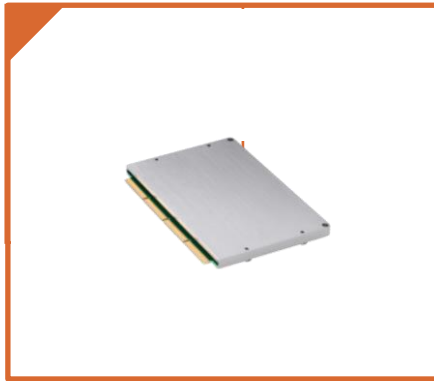
2021			1H'22		2H'22	
Q2	Q3	Q4	Q1	Q2	Q3	Q4
Intel® NUC M15 Laptop Kit Bishop County 15" Performance T&L (11 th Gen i5/i7 TGL-UP3)						

SEGMENT
 PERFORMANCE

"Note: Left Edge indicates PRQ"

Intel® NUC Element

The Next Evolution of Modular Computing



A Pluggable System-On-Module for U-series and H-series CPU Usages

Upgradeable

Choice of Processors - Xeon, Core i9, i7, i7 vPro, i5, i5 vPro, i3, Pentium, and Celeron

Expanded I/O options

Significantly reduced host system costs

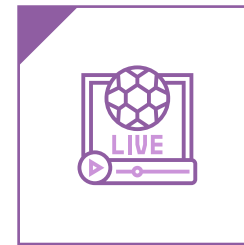
3-Year Warranty



Smart Screens
(Digital Signage,
Kiosks)



Modular Compute
(AIO, Laptops,
Mini PCs)



Gaming
(AAA Gaming,
Streaming)



Workstation
(CAD, Content
Creation)

Target Usage Scenarios




Target Usage Scenarios

[Back to table of Contents](#)

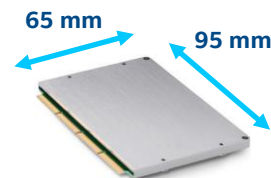
Intel® NUC 11 Compute Element (U-Series)

"Elk Bay"

[Back to Roadmap](#)

	11th Generation Intel® Core™ i7-1185G7 Intel® Iris™ X ^e Graphics, Intel® vPro® Technology 3.0GHz@28W ~ 1.2GHz@15W, up to 4.8GHz Turbo 4 Cores, 8 Threads, 12MB L3 Cache, 4267MT/s LPDDR4x
	11th Generation Intel® Core™ i7-1165G7 Intel® Iris™ Xe Graphics 2.8GHz@28W ~ 1.2GHz@15W, up to 4.7GHz Turbo 4 Cores, 8 Threads, 12MB L3 Cache, 4267MT/s LPDDR4x
	11th Generation Intel® Core™ i5-1145G7 Intel® Iris™ Xe Graphics, Intel® vPro® Technology 2.6GHz@28W ~ 1.1GHz@15W, up to 4.4GHz Turbo 4 Cores, 8 Threads, 8MB L3 Cache, 4267MT/s LPDDR4x
	11th Generation Intel® Core™ i5-1135G7 Intel® Iris™ Xe Graphics 2.4GHz@28W ~ 0.9GHz@15W, up to 4.2GHz Turbo 4 Cores, 8 Threads, 8MB L3 Cache, 4267MT/s LPDDR4x
	11th Generation Intel® Core™ i3-1115G4 Intel® UHD Graphics 3.0GHz@28W ~ 1.7GHz@15W, up to 4.1GHz Turbo 2 Cores, 4 Threads, 6MB L3 Cache, 3733MT/s LPDDR4x
	Intel® Celeron® 6305 Intel® UHD Graphics 1.8GHz@15W 2 Cores, 2 Threads, 4MB L3 Cache, 3733MT/s LPDDR4x

- Intel® Wi-Fi 6 AX201 soldered-down, 802.11ax 2x2 2.4Gbps + Bluetooth® 5.1
- 4 to 16GB soldered-down, dual-channel LPDDR4X memory on Core SKUs
- Discrete TPM 2.0 device (on SKUs with Intel® vPro™ Technology only)
- Windows 10 & Linux operating systems supported
- I/O supported by the card-edge consolidated connector:
 - 4 x USB 3.2 Gen 2
 - 3 x USB 2.0
 - 2 x DDI (configurable as DP 1.4a or HDMI 2.0b)
 - 1 x Type C (DDI/TBT/USB4)
 - 1 x eDP 1.4b
 - 1 x GbE PHY
 - 1 x PCIe x4/SATA
 - 1 x PCIe x4 (Gen4)
 - 1 x PCIe x1
 - 1 x HD Audio
 - eSPI (EC interface)
- Support for up to quad 4k@60Hz displays (triple DDI plus eDP interfaces) on SKUs with Intel Core processors
- Generation agnostic heat-spreader thermal interface
- Supports integration in to both stationary and mobile system designs
- **Module dimensions: 95 x 65 x 6 mm**
- No moving parts
- **Qualified for 24x7 operation**
- **Three Year Product Life Cycle**
- **Three Year Warranty**



Intel® NUC 11 Compute Element (U-Series)

"Elk Bay"

[Back to Roadmap](#)

Elk Bay Compute Element Ordering Codes

Product Code	MM#	Availability at Disti	Processor	RAM
BKCM11EBv716W	99A8FM	Available	11 th Gen vPro Core i7-1185G7	16GB LPDDR4X
BKCM11EBi716W	99A8FP	WW21'21	11 th Gen Core i7-1165G7	16GB LPDDR4X
BKCM11EBv58W	99A8FR	Available	11 th Gen vPro Core i5-1145G7	8GB LPDDR4X
BKCM11EBi58W	99A8FT	Available	11 th Gen Core i5-1135G7	8GB LPDDR4X
BKCM11EBi38W	99A8FV	Available	11 th Gen Core i3-1115G4	8GB LPDDR4X
BKCM11EBC4W	99A8FW	Available	Celeron 6305	4GB LPDDR4X

Intel® NUC 8 Compute Element (U-Series)



8th Generation Intel® Core™ i7-8665U (CM8v7CB)
1.9 GHz – 4.8 GHz Turbo, 4 Core, 8 Thread, 8MB Cache, **15W**
Intel® vPro® Technology, Intel® AMT, TPM 2.0
Intel® UHD Graphics 620, 300 MHz - 1150 MHz



8th Generation Intel® Core™ i7-8565U (CM8i7CB)
1.8 GHz – 4.6 GHz Turbo, 4 Core, 8 Thread, 8MB Cache, **15W**
Intel® UHD Graphics 620, 300 MHz - 1150 MHz



8th Generation Intel® Core™ i5-8365U (CM8v5CB)
1.6 GHz – 4.1 GHz Turbo, 4 Core, 8 Thread, 6MB Cache, **15W**
Intel® vPro® Technology, Intel® AMT, TPM 2.0
Intel® UHD Graphics 620, 300 MHz - 1100 MHz



8th Generation Intel® Core™ i5-8265U (CM8i5CB)
1.6 GHz – 3.9 GHz Turbo, 4 Core, 8 Thread, 6MB Cache, **15W**
Intel® UHD Graphics 620, 300 MHz - 1100 MHz



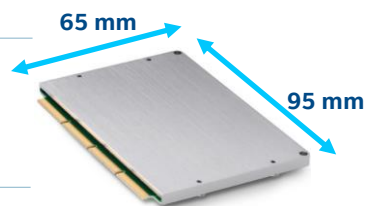
8th Generation Intel® Core™ i3-8145U (CM8i3CB)
2.1 GHz – 3.9 GHz Turbo, 2 Core, 4 Thread, 4MB Cache, **15W**
Intel® UHD Graphics 620, 300 MHz - 1000 MHz



Intel® Pentium® Gold 5405U (CM8PCB)
2.3 GHz, 2 Core, 4 Thread, 2MB Cache, **15W**
Intel® UHD Graphics 610, 300 MHz - 950 MHz



Intel® Celeron® 4305U (CM8CCB)
2.2 GHz, 2 Core, 2 Thread, 2MB Cache, **15W**
Intel® UHD Graphics 610, 300 MHz - 900 MHz



- Intel® Wireless-AC 9560 soldered-down, 802.11ac 2x2 1.73Gbps + Bluetooth® 5
- **4 to 8GB** soldered-down, dual-channel memory
- Discrete TPM 2.0 device (on SKUs with Intel® vPro® Technology only)
- **Select SKUs with 64GB** eMMC Storage
- Windows 10 & Linux operating systems supported
- I/O supported by the card-edge consolidated connector:
 - 4 x USB 3.2 Gen 2
 - 3 x USB 2.0
 - 2 x DDI (configurable as DP/HDMI)
 - 1 x eDP
 - 1 x GbE PHY
 - 1 x PCIe x4/SATA
 - 1 x PCIe x4
 - 1 x PCIe x1
 - 1 x HD Audio
 - eSPI (EC interface)
- Support for up to triple 4k@60Hz displays (2x DDI plus eDP interfaces)
- Generation agnostic heat-spreader thermal interface
- Supports integration into both stationary and mobile system designs
- **Module dimensions: 95 x 65 x 6 mm**
- No moving parts
- **Qualified for 24x7 operation**
- **Three Year Product Life Cycle**
- **Three Year Warranty**

Intel® NUC 8 Compute Element (U-Series)

"Chandler Bay"

[Back to Roadmap](#)

Chandler Bay Compute Element Ordering Codes

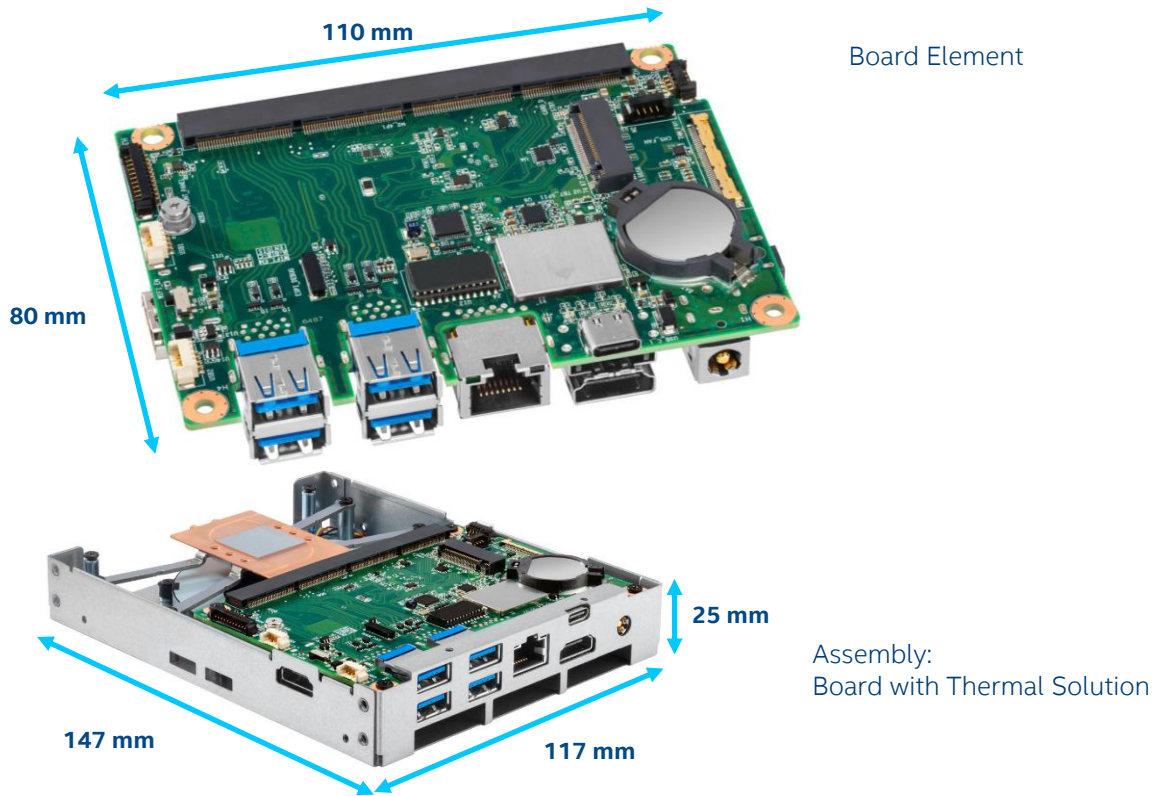
Product Code	MM#	Processor	RAM	Storage
BKCM8v7CB8N	999MCK	8th Gen vPro Core i7-8665U	8GB LPDDR3	None
BKCM8i7CB8N	999MCL	8th Gen Core i7-8565U	8GB LPDDR3	None
BKCM8v5CB8N	999M05	8th Gen vPro Core i5-8365U	8GB LPDDR3	None
BKCM8i5CB8N	999M06	8th Gen Core i5-8265U	8GB LPDDR3	None
BKCM8i3CB4N	999M07	8th Gen Core i3-8145U	4GB LPDDR3	None
BKCM8PCB4R	999M08	Pentium Gold 5405U	4GB LPDDR3	64GB eMMC
BKCM8CCB4R	999M09	Celeron 4305U	4GB LPDDR3	64GB eMMC

All products available at Distri

Intel® NUC Board/Assembly Element (U-series)

Support for Intel® NUC Compute Element

All Elk Bay (and future) Compute Elements are supported in Garden Beach (Core i7 vPro, Core i7, Core i5 vPro, Core i5, Core i3, Celeron)



- Requires 11th Gen (and future) Intel® NUC Compute Element
- The receiving connector supports the following Intel® NUC Compute Elements:
 - CM11EBv716W with Intel® Core™ i7 vPro®
 - CM11EBi716W with Intel® Core™ i7
 - CM11EBv58W with Intel® Core™ i5 vPro®
 - CM11EBi58W with Intel® Core™ i5
 - CM11EBi34W with Intel® Core™ i3
 - CM11EBC4W with Intel® Celeron®
 - Also compatible with future generations of Intel® NUC Compute Elements
- Included carrier board connectors:
 - 4 x USB 3.2 Gen 2 type A
 - 2 x USB 2.0 internal headers
 - 1 x front panel control internal header
 - 1 x Thunderbolt 4 (incl. DP and USB 4) via back panel type C connector
 - 2 x HDMI 2.0b (1 external, 1 internal)
 - 1 x eDP internal header
 - 1 x RJ-45 10/100/1000 Mbps Ethernet w/ dual LEDs
 - 1 x m.2 22x80 PCIe x4 Gen 4 slot
 - 2 x PWM internal fan headers (Compute Element fan, System fan)
 - DC power input external jack
 - DC power input internal 4-pin header
- Support for up to **quad 4k@60Hz** displays (dual HDMI 2.0b, plus DP via type C, eDP)
- Thermal solution support for **28W CPU TDP**
- Same board dimensions as original Butler Beach board: 110mm x 80mm
- Same full assembly dimensions as original Butler Beach assembly: 117mm x 147mm x 25mm
- **Qualified for 24x7 operation**
- **Three Year Product Life Cycle; Three Year Warranty**

Available SKUs

Assembly I/O Board

Intel® NUC Board/Assembly Element (U-series)

Garden Beach Board/Assembly Ordering Codes

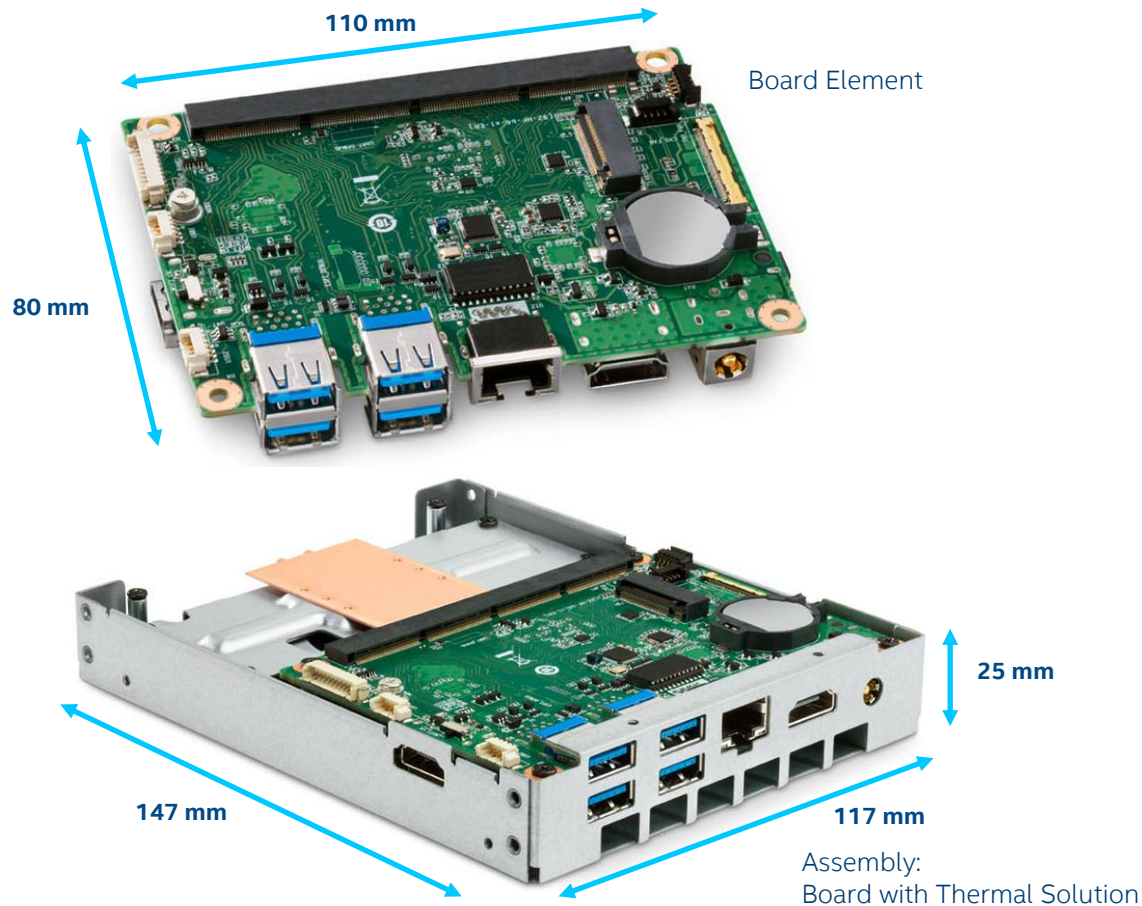
Product Code	MM#	Description	Availability at Disti
BKCMB2GB	99A8G1	Carrier Board only	WW21'21
BKCMA2GB	99A8G2	Carrier Board with Thermal Solution	WW21'21

Intel® NUC Board/Assembly Element (U-series)

Support for Intel® NUC Compute Element

All Compute Elements are supported in Butler Beach

(Core i7 vPro, Core i7, Core i5 vPro, Core i5, Core i3, Pentium, Celeron)



- **Requires Intel® NUC Compute Element**
- The receiving connector supports the following Intel® NUC Compute Elements:
 - CM8v7CB8N with Intel® Core™ i7 vPro®
 - CM8i7CB8N with Intel® Core™ i7
 - CM8v5CB8N with Intel® Core™ i5 vPro®
 - CM8i5CB8N with Intel® Core™ i5
 - CM8i3CB4N with Intel® Core™ i3
 - CM8PCB4R with Intel® Pentium® Gold
 - CM8CCB4R with Intel® Celeron®
 - Also compatible with future generations of Intel® NUC Compute Elements
- Included carrier board connectors:
 - 4 x USB 3.2 Gen 2 type A
 - 2 x USB 2.0 internal headers
 - 1 x front panel control internal header
 - 2 x HDMI 2.0a (1 external, 1 internal)
 - 1 x eDP internal header
 - 1 x RJ-45 10/100/1000 Mbps Ethernet w/ dual LEDs
 - 1 x m.2 22x80 PCIe x4 w/SATA slot
 - 2 x PWM internal fan headers (Compute Element fan, System fan)
 - DC power input external jack
 - DC power input internal 4-pin header
- Support for up to triple 4k@60Hz displays (dual HDMI 2.0a plus eDP connectors)
- Thermal solution support for **15W CPU TDP**
- Board dimensions: 110mm x 80mm
- Full assembly dimensions: 117mm x 147mm x 25mm
- **Qualified for 24x7 operation**
- **Three Year Product Life Cycle**
- **Three Year Warranty**

Available SKUs

Assembly

I/O Board

Intel® NUC Board/Assembly Element (U-series)

Butler Beach Board/Assembly Ordering Codes

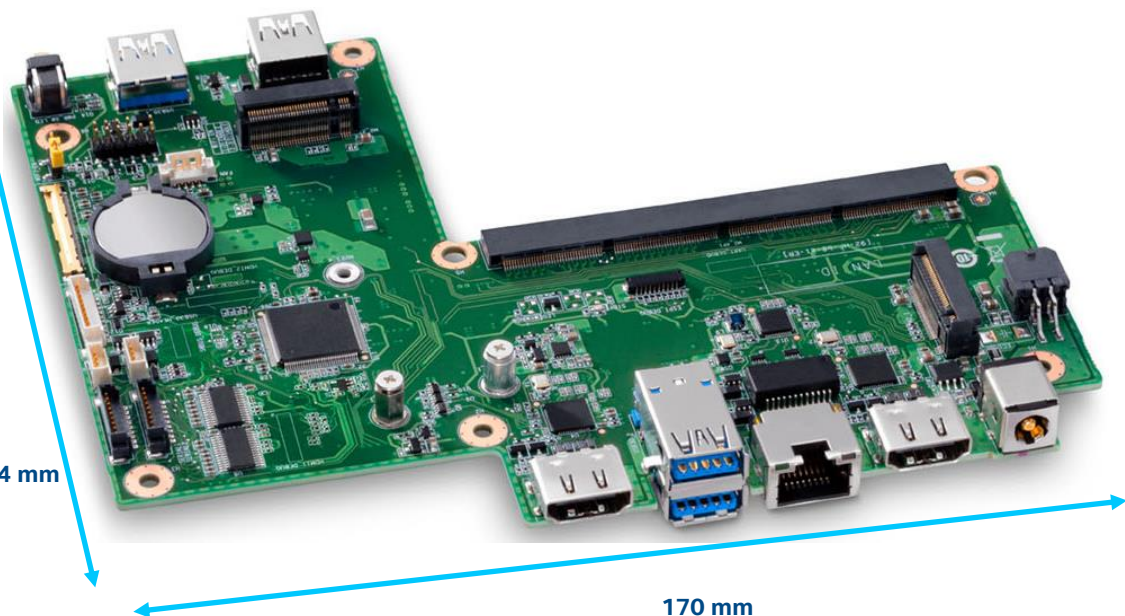
Product Code	MM#	Description
BKCMB1BB	999M8T	Carrier Board only
BKCMA1BB	999M9F	Carrier Board with Thermal Solution

All products available at Distri

Intel® NUC Rugged Board Element (U-series)

Support for Intel® NUC Compute Element

All [Chandler Bay](#) and [Elk Bay](#) Compute Elements are supported in Austin Beach.



- Requires Intel® NUC Compute Element
- Design implementation: **Expandable** (CMB1ABA)
- **Dual M.2 22x80 key M** slots for PCIe x4 NVMe and SATA SSDs
- **Two HDMI 2.0a** ports with **built-in CEC**, plus internal **4-lane eDP** interface
 - Support for dual 4k@60Hz via HDMI 2.0a, plus additional 4k@60 via eDP
- **Intel® Optane™ Memory H10 with Solid State Storage** ready
- **Intel® i219-LM** 10/100/1000 Mbps RJ45 Ethernet
- 1 x front and 2 x backpanel USB 3.2 Gen 2 type A ports, 1x internal USB 3.0 header
- 1 x front port and 2 x internal USB 2.0 headers
- 2 x **RS232** serial port headers
- Up to 7.1 multichannel (or dual 8-channel) digital audio via HDMI
- Front panel header (with Vcc5/1A, 5Vsby2A, 3.3Vsby/1A)
- **Qualified for 24x7 operation**
- **Delayed AC start; DC overvoltage protection**
- **Display emulation** (headless display, virtual display, persistent displays)
- 12 – 24V_{DC} rear jack, internal 2x2 power connector
- Board dimensions: 170 x 136.4 mm
- Microsoft Windows* 10, Windows 10 IOT Enterprise, compatible with various Linux distros
- 5-pack bulk packaging
- **Three Year Product Life Cycle**
- **Three Year Warranty**

Available SKUs

Mini PC

Kit

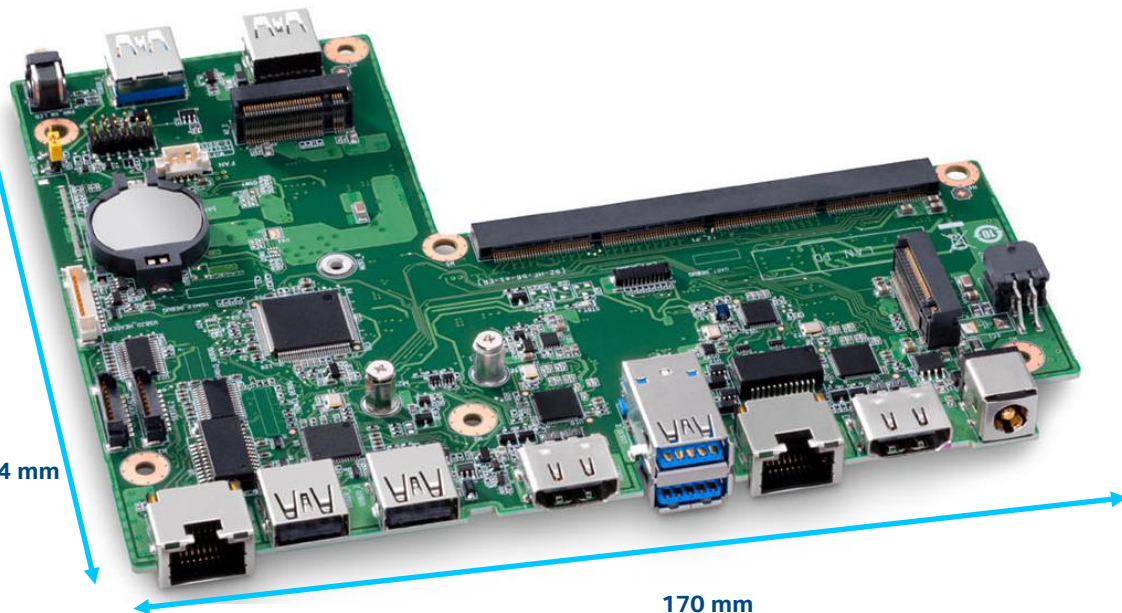
Chassis & Board

Board

Intel® NUC Rugged Board Element (U-series)

Support for Intel® NUC Compute Element

All [Chandler Bay](#) and [Elk Bay](#) Compute Elements are supported in Austin Beach.



- Requires Intel® NUC Compute Element
- Design implementation: **Dual LAN** (CMB1ABB)
- **Dual M.2 22x80 key M** slots for PCIe x4 NVMe and SATA SSDs
- **Two HDMI 2.0a** ports with **built-in CEC**
 - Support for dual 4k@60Hz via HDMI 2.0a
- **Intel® Optane™ Memory H10 with Solid State Storage** ready
- **Dual GbE LAN: Intel® i219-LM and Intel® i211-AT** 10/100/1000 Mbps RJ45 Ethernet
- 1 x front and 2 x backpanel USB 3.2 Gen 2 type A ports, 1x internal USB 3.0 header
- 1 x front and 2 x backpanel USB 2.0 ports
- 2 x **RS232** serial port headers
- Up to 7.1 multichannel (or dual 8-channel) digital audio via HDMI
- Front panel header (with Vcc5/1A, 5Vsby2A, 3.3Vsby1A)
- **Qualified for 24x7 operation**
- **Delayed AC start; DC overvoltage protection**
- **Display emulation** (headless display, virtual display, persistent displays)
- 12 – 24V_{DC} rear jack, internal 2x2 power connector
- Board dimensions: 170 x 136.4 mm
- Microsoft Windows* 10, Windows 10 IOT Enterprise, compatible with various Linux distros
- 5-pack bulk packaging
- **Three Year Product Life Cycle**
- **Three Year Warranty**

Available SKUs

Mini PC

Kit

Chassis & Board

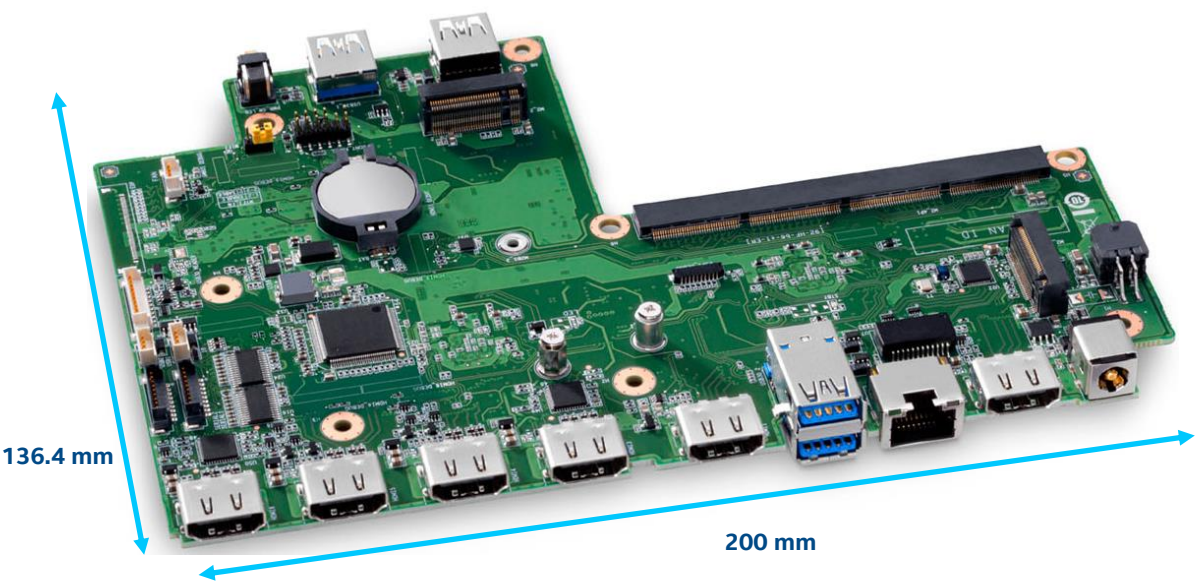
Board

Intel® NUC Rugged Board Element (U-series)

Support for Intel® NUC Compute Element
All Chandler Bay and Elk Bay Compute Elements are supported in Austin Beach.



- Requires Intel® NUC Compute Element
- Design implementation: **Multi HDMI** (CMB1ABC)
- **Dual M.2 22x80 key M** slots for PCIe x4 NVMe and SATA SSDs
- **Six HDMI ports (2x HDMI 2.0a, 4x HDMI 1.4)** with **built-in CEC for all ports**
 - Support for dual 4k@60Hz, or six 1080p@60Hz (dual triple-wide 5760x1080 screens)
- **Intel® Optane™ Memory H10 with Solid State Storage** ready
- **Intel® i219-LM** 10/100/1000 Mbps RJ45 Ethernet
- 1 x front and 2 x backpanel USB 3.2 Gen 2 type A ports, 1x internal USB 3.0 header
- 1 x front port and 2 x internal USB 2.0 headers
- 2 x **RS232** serial port headers
- Up to 7.1 multichannel (or dual 8-channel) digital audio via HDMI
- Front panel header (with Vcc5/1A, 5Vsby2A, 3.3Vsby/1A)
- **Qualified for 24x7 operation**
- **Delayed AC start; DC overvoltage protection**
- **Display emulation** (headless display, virtual display, persistent displays)
- 12 – 24V_{DC} rear jack, internal 2x2 power connector
- Board dimensions: 200 x 136.4 mm
- Microsoft Windows* 10, Windows 10 IOT Enterprise, compatible with various Linux distros
- 5-pack bulk packaging
- **Three Year Product Life Cycle**
- **Three Year Warranty**



Available SKUs

<input type="radio"/> Mini PC	<input type="radio"/> Kit	<input checked="" type="radio"/> Chassis & Board	<input type="radio"/> Board
-------------------------------	---------------------------	--	-----------------------------

Intel® NUC Rugged Board Element (U-series)

Austin Beach Boards Ordering Codes

Product Code	MM#	Description
BKCMB1ABA	999M8C	Carrier Board: "Expandable"
BKCMB1ABB	999M8F	Carrier Board: "Dual LAN"
BKCMB1ABC	999M8M	Carrier Board: "Multi HDMI"

All products available at Distri

Intel® NUC 9 Extreme Compute Element (H-series)



9th Generation Intel® Core™ i9-9980HK (NUC9i9QN)
2.40 GHz – 5.00 GHz Turbo, 8 core, 16 thread, 16MB Cache, 65W Intel® UHD Graphics 630, 350 MHz – 1.25 GHz

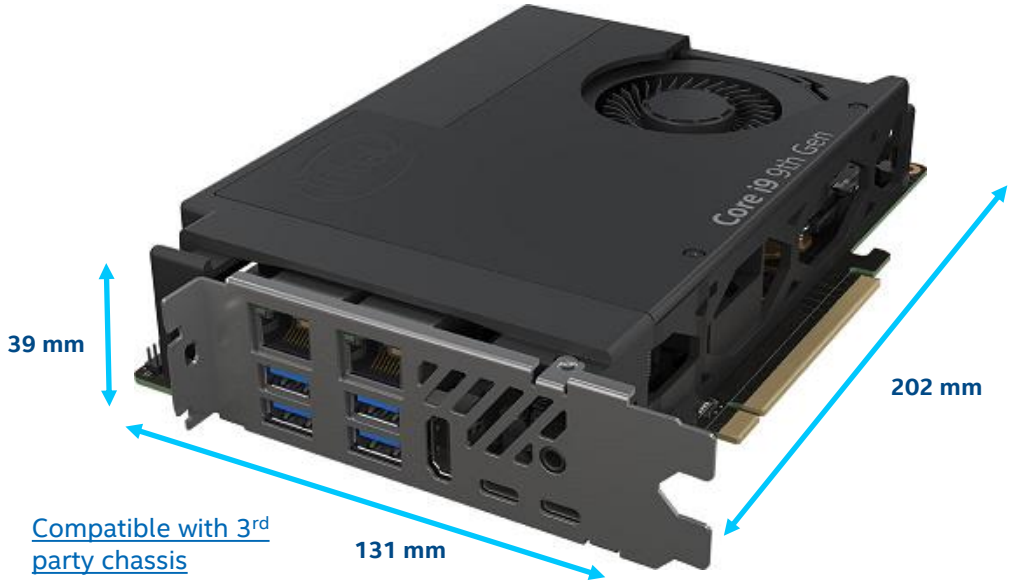


9th Generation Intel® Core™ i7-9750H (NUC9i7QN)
2.60 GHz – 4.50 GHz Turbo, 6 core, 12 thread, 12 MB Cache, 65W Intel® UHD Graphics 630, 350 MHz – 1.15 GHz



9th Generation Intel® Core™ i5-9300H (NUC9i5QN)
2.40 GHz – 4.10 GHz Turbo, 4 core, 8 thread, 8 MB Cache, 65W Intel® UHD Graphics 630, 350 MHz – 1.05 GHz

- Dual channel DDR4 SODIMMs, 1.2V, max 64GB @ 2666MHz
- PCIe 3.0 x16 Gold Finger
- 2 x M.2 key M slots: 42/80 + 42/80/110 PCH-attached PCIe x4 Gen3 NVMe or SATA3 SSD, RAID-0 and RAID-1 capable
- Intel® Optane™ SSD and Intel® Optane™ Memory M10 and H10 ready
- HDMI 2.0a connector
- 2 x Thunderbolt™ 3 ports
- Supports 3 x 4K displays (Intel® UHD Graphics)
- 2 x Intel® 10/100/1000 Mbps (i219-LM and i210-AT) Ethernet ports
- Intel® Wi-Fi 6 AX200 2.4Gbps + Bluetooth v5, dual internal antennas
- 4 x USB 3.1 Gen2 Type-A connectors
- Up to 7.1 multichannel digital audio via HDMI or DisplayPort signals
- 3.5mm rear speaker / TOSLINK combo jack
- Internal Front Panel Audio, CEC, 2 x USB 3.1 headers, 2 x USB 2.0 headers
- 202 x 131 x 39 mm
- Microsoft Windows* 10 logo'd, compatible with Windows Server 2019
- Individual bulk packaging
- Three-year Warranty



Available SKUs

- Mini PC
- Kit
- Chassis
- Compute Element

Intel® NUC 9 Extreme Compute Element (H-series)

Ghost Canyon Compute Element Ordering Codes

Product Code	MM#	Processor
BKNUC9i9QNB	999LWZ	9 th Generation Core™ i9-9980HK
BKNUC9i7QNB	999LX0	9 th Generation Core™ i7-9750H
BKNUC9i5QNB	999LX1	9 th Generation Core™ i5-9300H

All products available at Disti

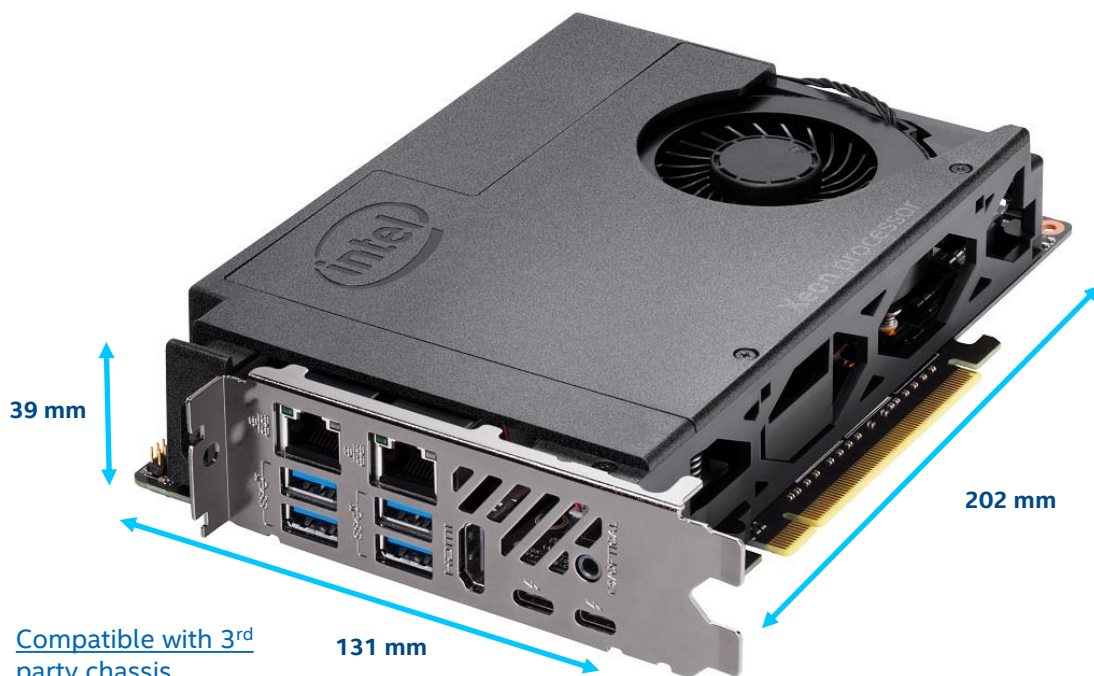
Intel® NUC 9 Pro Compute Element (H-series)



Intel® Xeon® E-2286M Processor (NUC9VXQN)
 2.4 GHz – 5.0 GHz Turbo, 8 Core, 16 thread, 16MB Cache, 60W Intel® UHD Graphics P630, 350 MHz - 1250 MHz Intel® vPro® Technology, Intel® AMT



9th Generation Intel® Core™ i7-9850H (NUC9V7QN)
 2.6 GHz – 4.6 GHz Turbo, 6 Core, 12 thread, 12MB Cache, 60W Intel® UHD Graphics 630, 350 MHz - 1150 MHz Intel® vPro® Technology, Intel® AMT



[Compatible with 3rd party chassis](#)

- Dual channel DDR4 SODIMMs, 1.2V, max 64GB @ 2666MHz, ECC Memory Support (Xeon only)
- PCIe 3.0 x16 Gold Finger
- 2 x M.2 key M slots: 42/80 + 42/80/110 PCH-attached PCIe x4 Gen3 NVMe or SATA3 SSD, RAID-0 and RAID-1 capable
- Intel® Optane™ SSD and Intel® Optane™ Memory M10 and H10 ready
- Discrete TPM 2.0
- Runtime BIOS Resilience with Dynamic Attestation
- HDMI 2.0a connector
- 2 x Thunderbolt™ 3 ports
- Supports 3 x 4K displays (Intel® UHD Graphics)
- 2 x Intel® 10/100/1000 Mbps (i219-LM and i210-AT) Ethernet ports
- Intel® Wi-Fi 6 AX200 2.4Gbps, WiAMT + Bluetooth v5, dual internal antennas
- 4 x USB 3.1 Gen2 Type-A connectors
- Up to 7.1 multichannel digital audio via HDMI or DisplayPort signals
- 3.5mm rear speaker / TOSLINK combo jack
- Internal Front Panel Audio, CEC, 2 x USB 3.1 headers, 2 x USB 2.0 headers
- 202 x 131 x 39 mm
- Microsoft Windows* 10 logo'd, compatible with Windows Server 2019
- Individual retail packaging
- Three Year Product Life Cycle, Three Year Warranty

Available SKUs

Mini PC

Kit

Chassis

Compute Element

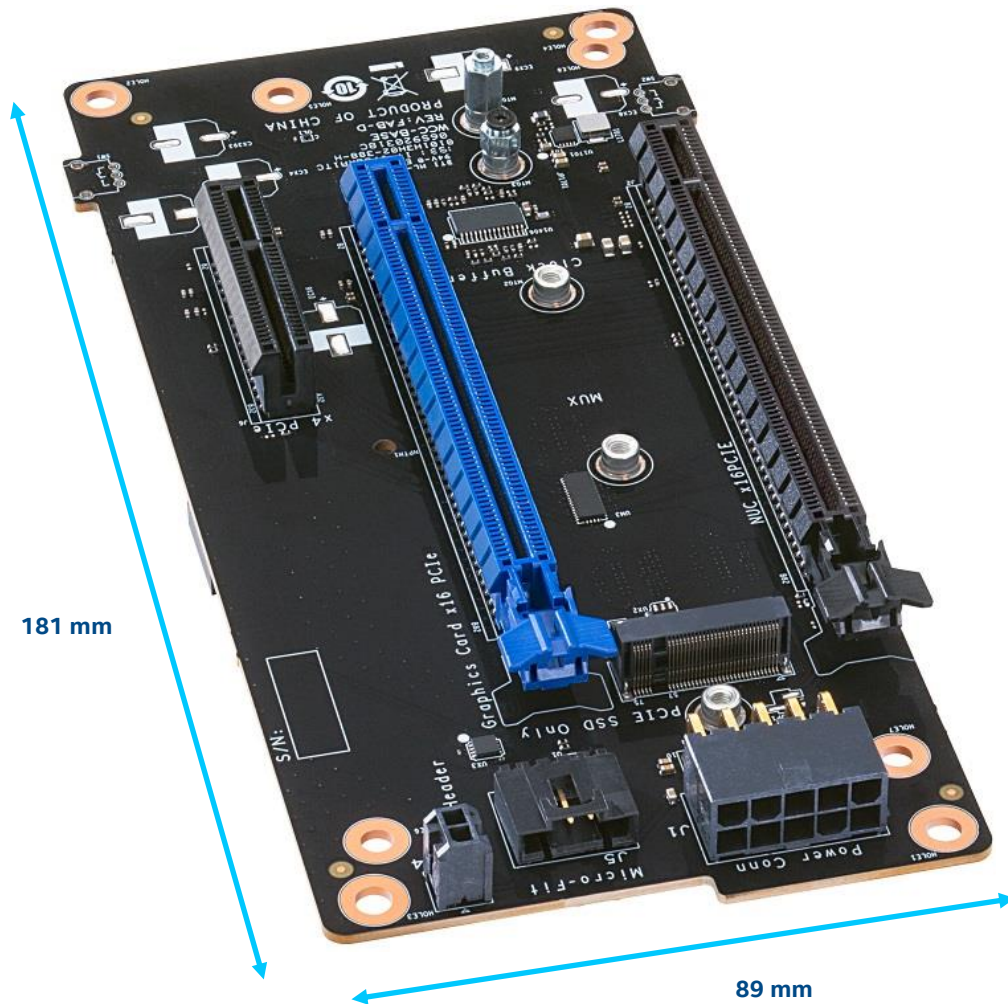
Intel® NUC 9 Pro Compute Element (H-series)

Quartz Canyon Compute Element Ordering Codes

Product Code	MM#	Processor
BKNUC9VXQNB	999LX2	Xeon® E-2286M
BKNUC9V7QNB	999LX3	9 th Generation Core™ i7-9850H

All products available at Distri

Intel® NUC Board Element (H-series)



- Compatible with H Series NUC Compute Elements
 - Including Quartz Canyon and Ghost Canyon Compute Elements
- 2 x PCIe 3.0 X16 slot
 - Black PCIe x16 for NUC Compute Element, Blue PCIe x16 for Add-On Card
- PCIe X4 slot open-ended
- M.2 slot 42/80/110 PCIe X4 CPU-attached
- 181 x 89 mm
- Three-year Warranty

Intel® NUC Board Element (H-series)

West Cove Board Element Ordering Codes

Product Code	MM#
BKBBWC1B1	999M2A

All products available at Distri

Intel® NUC Extreme

Upgradeable Powerhouse Mini PC with Discrete Graphics

Intel® Core™ i9K/i7/i5 processors

Supports 12" and 8" desktop dual-slot graphics cards*

Integrated discrete graphics processors*

Triple M.2 SSD support*

Upgradeable Compute Element board*

Uncompromised performance

**Varies by product*



Target Usage Scenarios



Gaming



Streaming



Content Creation

[Back to table of Contents](#)

Intel® NUC 9 Extreme

"Ghost Canyon"

[Back to Roadmap](#)



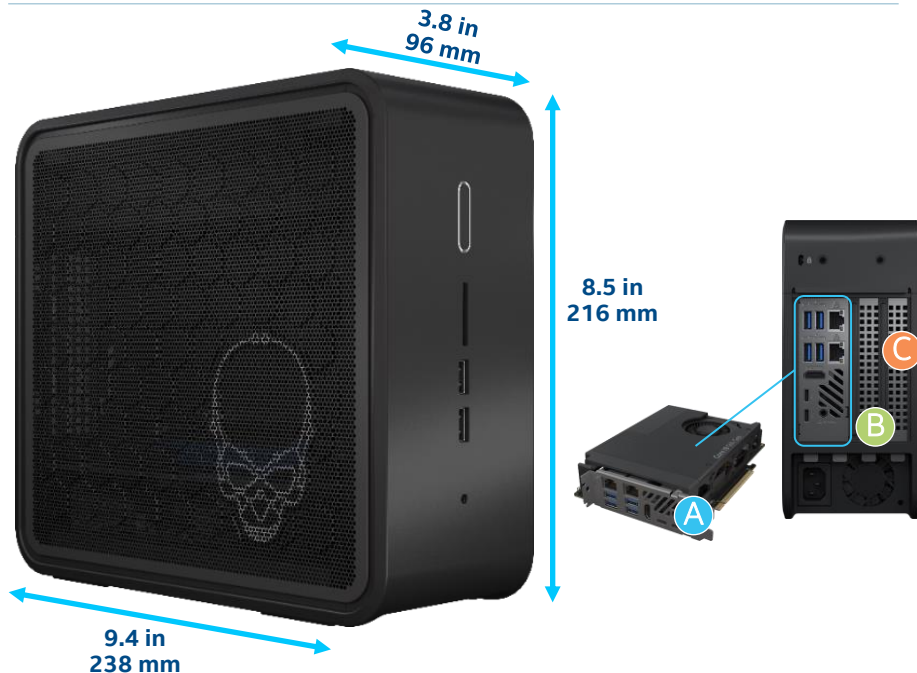
9th Generation Intel® Core™ i9-9980HK (NUC9i9QN)
2.40 GHz – 5.00 GHz Turbo, 8 core, 16 thread, 16MB Cache, 65W
Intel® UHD Graphics 630, 350 MHz – 1.25 GHz



9th Generation Intel® Core™ i7-9750H (NUC9i7QN)
2.60 GHz – 4.50 GHz Turbo, 6 core, 12 thread, 12 MB Cache, 65W
Intel® UHD Graphics 630, 350 MHz – 1.15 GHz



9th Generation Intel® Core™ i5-9300H (NUC9i5QN)
2.40 GHz – 4.10 GHz Turbo, 4 core, 8 thread, 8 MB Cache, 65W
Intel® UHD Graphics 630, 350 MHz – 1.05 GHz



A Pre-installed Ghost Canyon Compute Element:

- Dual channel DDR4 SODIMMs, 1.2V, max 64GB @ 2666MHz
- 2 x M.2 key M slots: 42/80 + 42/80/110 PCH-attached PCIe x4 Gen3 NVMe or SATA3 SSD, RAID-0 and RAID-1 capable
- Intel® Optane™ SSD and Intel® Optane™ Memory M10 and H10 ready
- HDMI 2.0a connector
- 2 x Thunderbolt™ 3 ports
- Supports 3 x 4K displays (Intel® UHD Graphics)
- 2 x Intel® 10/100/1000 Mbps (i219-LM and i210-AT) Ethernet ports
- Intel® Wi-Fi 6 AX200 2.4Gbps + Bluetooth v5, dual internal antennas
- 4 x USB 3.1 Gen2 Type-A connectors (rear); 6x total USB 3.1 Gen2 ports
- Up to 7.1 multichannel digital audio via HDMI or DisplayPort signals
- 3.5mm rear speaker / TOSLINK combo jack
- Internal Front Panel Audio, CEC, 2x USB 3.1 headers, 2 x USB 2.0 headers

• Ghost Canyon chassis:

- B PCIe X16 slot with 6+2-pin & 8-pin PCIe power connectors, up to 225W, up to 8" card length, dual-slot capable
- C PCIe X4 slot
 - CPU-attached M.2 slot 42/80/110 PCIe X4 Gen 3, Intel® Optane™ SSD ready
 - SDXC slot with UHS-II support
 - 2 x USB 3.1 Gen2 Type-A (front) ; 6x total USB 3.1 Gen2 ports
 - 1 x USB 2.0 Type-A (internal) connectors
 - 3.5mm front stereo headset jack
 - Plastic with metal inner frame, Kensington lock with panel security
 - 238 x 216 x 96 mm (~5L)
 - 500W internal power supply with geo-specific C13 AC cords
- Microsoft Windows* 10 logo, compatible w/ Windows Server 2019; compatible w/ various Linux distros
- Individual retail packaging
- Three-year Warranty

Available SKUs



Mini PC



Kit



Chassis



Compute Element

Intel® NUC 9 Extreme

"Ghost Canyon"

[Back to Roadmap](#)

Ghost Canyon Kit Ordering Codes

Product Code	MM#	AC Cord (C13)	Processor
Ghost Canyon Kit – NUC9i9QNX			
BXNUC9i9QNX	999DNT	None	9 th Generation Core™ i9-9980HK
BXNUC9i9QNX1	999DNV	US	
BXNUC9i9QNX5	99A6DN	IN	
BXNUC9i9QNX6	999DP1	CN	
Ghost Canyon Kit – NUC9i7QNX			
BXNUC9i7QNX	999DP4	None	9 th Generation Core™ i7-9750H
BXNUC9i7QNX1	999DP5	US	
BXNUC9i7QNX5	99A6DM	IN	
BXNUC9i7QNX6	999DP9	CN	
Ghost Canyon Kit – NUC9i5QNX			
BXNUC9i5QNX	999DPA	None	9 th Generation Core™ i5-9300H
BXNUC9i5QNX1	999DPC	US	
BXNUC9i5QNX5	99A6DK	IN	
BXNUC9i5QNX6	999DPH	CN	

Compute Element Ordering Codes

Product Code	MM#	Processor
Ghost Canyon Compute Element – NUC9i9QNB		
BKNUC9i9QNB	999LWZ	9 th Generation Core™ i9-9980HK
Ghost Canyon Compute Element – NUC9i7QNB		
BKNUC9i7QNB	999LX0	9 th Generation Core™ i7-9750H
Ghost Canyon Compute Element – NUC9i5QNB		
BKNUC9i5QNB	999LX1	9 th Generation Core™ i5-9300H

Board Element Ordering Codes

Product Code	MM#
West Cove Board Element – BKBBWC1B1	
BKBBWC1B1	999M2A

All products available at Disti

Intel® NUC Enthusiast

Our smallest Mini PC for gaming

Intel® Core™ i7, i5 processors

Includes 3rd party discrete graphics*

Supports up to six 4K displays*

Thunderbolt™ Technology

Space saving at 1.2L to 1.3L

RGB-backlit user replaceable mask*

**Varies by product*



Target Usage Scenarios



Gaming



Streaming



Content Creation

[Back to table of Contents](#)

Intel® NUC 11 Enthusiast

"Phantom Canyon"

[Back to Roadmap](#)



11th Generation Intel® Core™ i7-1165G7
2.8 GHz – 4.7 GHz Turbo, 4 core, 8 thread 12MB Cache, 28W
Intel® Iris™ Xe Graphics, up to 1.3 GHz



- NVIDIA® GeForce® RTX2060 Discrete Graphics w/ 6GB GDDR6
 - HDMI 2.0b port
 - Mini DisplayPort 1.4 port
- Dual channel DDR4-3200 SODIMMs, 1.2V, 64GB max
- M.2 22x80/110 PCIe x4 Gen3 NVMe and M.2 22x80 key M slots PCIe x4 Gen3 NVMe or SATA3 SSDs
- Intel® Optane™ Memory M10 and H10 ready
- Front and rear Thunderbolt™ 4 ports (Intel® Iris™ Xe Graphics) with 5V/9V fast phone charging profiles
- Intel® 2.5Gb (i225-LM) Ethernet port
- Intel® Wireless-AX 201, IEEE 802.11ax 2x2/Wi-Fi 6 + Bluetooth 5, with internal antennas
- 2 x front, 4 x rear USB 3.1 Gen2 ports, and 2 x USB 2.0 via internal headers
- SDXC slot with UHS-II support
- Up to 7.1 multichannel digital audio via HDMI or DisplayPort signals
- 3.5mm front stereo headset jack, 3.5mm rear speaker / TOSLINK combo jack
- **Beam-forming, far-field, quad-mic array, with Alexa support**
- Front Consumer Infrared port
- Plastic with metal inner frame, replaceable lid, Kensington lock with base security
- 221 x 142 x 42 mm (~1.3L)
- 19V_{DC} 230W power supply with geo-specific C13 AC cords
- Common I/O header with Front Panel, CEC, 2 x USB2.0 signals
- **RGB-backlit top lid skull logo, with user-replaceable mask**
- Microsoft Windows* 10 logo'd, compatible with various Linux distros
- **Vertical stand included**
- Individual retail packaging
- **Three-year Warranty**

Available SKUs



Mini PC



Kit



Chassis



Board

Intel® NUC 11 Enthusiast

"Phantom Canyon"

[Back to Roadmap](#)

Phantom Canyon Mini PC Ordering Codes

Product Code	MM#	Availability at Disti	AC Cord (C13)	Processor	GPU	RAM	Storage	OS
Intel® NUC 11 Extreme Mini PC - NUC11PHKi7CA								
RNUC11PHKi7CAA0	99ACOM	Available	None	11 th Generation Core™ i7-1165G7	Nvidia RTX2060 w/ 6GB GDDR6	16GB (2x 8GB) DDR4-3200	Intel® Optane™ Memory H10 (32GB + 512GB) Solid State Storage	Windows® 10 Home
RNUC11PHKi7CAA1	99ACOP	Available	US					
RNUC11PHKi7CAA2	99ACOR	Available	EU					
RNUC11PHKi7CAA6	99ACOX	Available	CN					

Phantom Canyon Kit Ordering Codes

Product Code	MM#	Availability at Disti	AC Cord (C13)	Processor	GPU
Intel® NUC 11 Extreme Mini PC - NUC11PHKi7C					
RNUC11PHKi7C000	99ACOC	Available	None	11 th Generation Core™ i7-1165G7	Nvidia RTX2060 w/ 6GB GDDR6
RNUC11PHKi7C001	99ACOD	Available	US		
RNUC11PHKi7C002	99ACOF	Available	EU		
RNUC11PHKi7C003	99ACOG	Available	UK		
RNUC11PHKi7C004	99ACOH	Available	AU		
RNUC11PHKi7C005	99ACOK	On Demand	IN		
RNUC11PHKi7C006	99ACOL	Available	CN		

Intel® NUC Performance

A customizable Mini PC with the Power of a Desktop PC

Intel® Core™ i7, i5, i3 processors

8th, 10th, and 11th Gen options

Up to Quadruple Display Support*

Space saving from 0.35L to 0.7L

Windows® 10 Home preinstalled*

Up to 8K display support*

Intel® Optane™ memory supported or preinstalled*

**Varies by product*



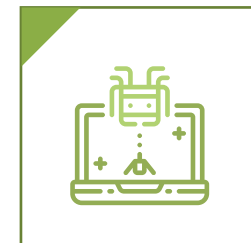
Target Usage Scenarios



Home Office



Home Theater PC



Casual Gaming

[Back to table of Contents](#)

Intel® NUC 10 Performance



10th Generation Intel® Core™ i7-10710U (NUC10i7FN)
1.1 GHz – 4.7 GHz Turbo, **6 core, 12 thread**, 12MB Cache,
25W Intel® UHD Graphics, 300 MHz – 1.15 GHz



10th Generation Intel® Core™ i5-10210U (NUC10i5FN)
1.6 GHz – 4.2 GHz Turbo, 4 core, 8 thread, 6MB Cache,
25W Intel® UHD Graphics, 300 MHz – 1.1 GHz



10th Generation Intel® Core™ i3-10110U (NUC10i3FN)
2.1 GHz – 4.1 GHz Turbo, 2 core, 4 thread, 4MB Cache,
25W Intel® UHD Graphics, 300 MHz – 1.0 GHz



10th Generation Intel® Core™ i7-10710U (NUC10i7FNHN**)
1.1 GHz – 4.7 GHz Turbo, **6 core, 12 thread**, 12MB Cache,
25W Intel® UHD Graphics, 300 MHz – 1.15 GHz



10th Generation Intel® Core™ i5-10210U (NUC10i5FNHN**)
1.6 GHz – 4.2 GHz Turbo, 4 core, 8 thread, 6MB Cache,
25W Intel® UHD Graphics, 300 MHz – 1.1 GHz



10th Generation Intel® Core™ i3-10110U (NUC10i3FNHN**)
2.1 GHz – 4.1 GHz Turbo, 2 core, 4 thread, 4MB Cache,
25W Intel® UHD Graphics, 300 MHz – 1.0 GHz



- Dual channel DDR4-2666 SODIMMs, 1.2V, 64GB maximum
- M.2 22x42/80 key M slot for PCIe x4 Gen3 NVMe or SATA3 SSD
- Intel® Optane™ Memory M10 and H10 ready
- HDMI 2.0a port and DisplayPort 1.2 via Thunderbolt™ 3 / USB-C™ port
- Supports 3 x 4K displays
- Intel® i219-V 10/100/1000 Mbps Ethernet
- Intel® Wi-Fi 6 AX201 2x2 160MHz channels + Bluetooth v5.1, internal antennas
- Front USB 3.1 Gen2 Type-C™ (5V/9V fast phone charging profiles) and type-A ports
- 2 x rear USB 3.1 Gen2, and 2 x internal USB 2.0 via header
- Front Consumer Infrared port
- SDXC slot with UHS-II support
- Up to 7.1 multichannel digital audio via HDMI or DisplayPort signals
- 3.5mm front stereo headset jack in select SKUs only
- Beam-forming, far-field, quad-mic array in select SKUs only
- Plastic with metal inner frame, replaceable lid, Kensington lock with base security
- "Tall" H chassis: 117 x 112 x 51 mm, w/ 2.5" 7mm SATA3 bay and port
- "Slim" K chassis: 117 x 112 x 38 mm
- 19V_{DC} input, 120W (Core™ i7 only) or 90W power supply with geo-specific C5 AC cords
- Front Panel, CEC, RGB LED, 2 x USB2.0 headers
- Front panel status RGB LED
- Microsoft Windows* 10 logo'd, compatible with various Linux distros
- VESA mounting plate included in kit SKUs only
- Individual retail packaging
- Three-year Warranty

Available SKUs

- Mini PC
 Kit
 Chassis
 Board

Intel® NUC 10 Performance

Frost Canyon L6 Kit Ordering Codes					
Product Code	MM#	AC Cord (C5)	Chassis	Processor	
Frost Canyon i7 Kit – NUC10i7FN					
BXNUC10i7FNHN	99AHT9	No Cord	Tall	10 th Generation Core™ i7-10710U	
BXNUC10i7FNHN1	99AHTF	US			
BXNUC10i7FNHN2	99AHTG	EU			
BXNUC10i7FNHN3	99AHTK	UK			
BXNUC10i7FNKN1	99AHTW	US	Slim		
BXNUC10i7FNKN2	99AHV3	EU			
Frost Canyon i5 Kit – NUC10i5FN					
BXNUC10i5FNHN	99AHV4	No Cord	Tall		10 th Generation Core™ i5-10210U
BXNUC10i5FNHN1	99AHV5	US			
BXNUC10i5FNHN2	99AHV8	EU			
BXNUC10i5FNHN4	99AHV9	AU			
BXNUC10i5FNHN5	99AHVA	IN			
BXNUC10i5FNKN1	99AHVV	US	Slim		
BXNUC10i5FNKN2	99AHVW	EU			

Frost Canyon L6 Kit Ordering Codes				
Product Code	MM#	AC Cord (C5)	Chassis	Processor
Frost Canyon i3 Kit – NUC10i3FN				
BXNUC10i3FNHN	99AHVZ	No Cord	Tall	10 th Generation Core™ i3-10110U
BXNUC10i3FNHN1	99AHW0	US		
BXNUC10i3FNHN2	99AHW1	EU		
BXNUC10i3FNHN3	99AHW4	UK		
BXNUC10i3FNHN5	99AHW5	IN		
BXNUC10i3FNKN1	99AHW7	US	Slim	
BXNUC10i3FNKN2	99AHWV	EU		

(Without analog audio codec / line-out jack & digital mics)

All products available at Distri

Intel® NUC Pro

Engineered For Your Business & Education Needs

Based on Intel® Xeon, Intel® Core™ i7 vPro™, Core™ i5 vPro™ and Intel® Core™ i9, i7, i3 processors

3-Year Product Life Cycle

Space-saving designs

Validated for 24/7 operation* and other industry-leading Intel reliability tests

Functional lid designs, adding additional display and connectivity options.

**Varies by product*



Target Usage Scenarios



Visual Solutions



SMB / Education



Collaboration

[Back to table of Contents](#)

Intel® NUC 9 Pro

“Quartz Canyon”

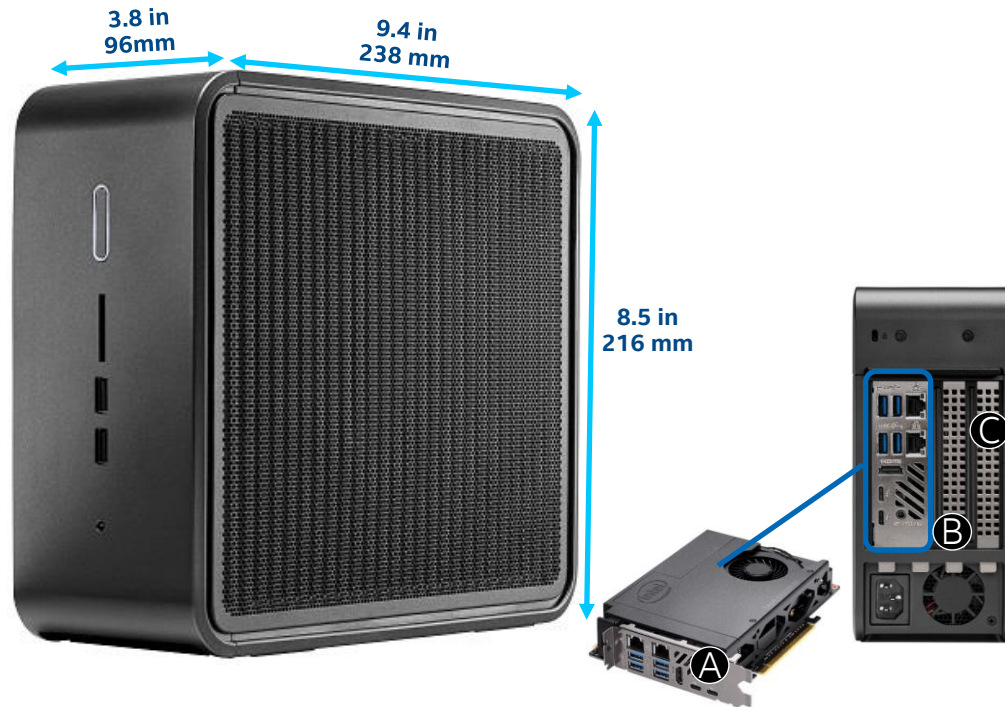
[Back to Roadmap](#)



Intel® Xeon® E-2286M Processor (NUC9VXQN)
2.4 GHz – 5.0 GHz Turbo, 8 Core, 16 thread, 16MB Cache, 60W
Intel® UHD Graphics P630, 350 MHz - 1250 MHz
Intel® vPro® Technology, Intel® AMT



9th Generation Intel® Core™ i7-9850H (NUC9V7QN)
2.6 GHz – 4.6 GHz Turbo, 6 Core, 12 thread, 12MB Cache, 60W
Intel® UHD Graphics 630, 350 MHz - 1150 MHz
Intel® vPro® Technology, Intel® AMT



- A** Pre-installed **Quartz Canyon Compute Element**:
 - Dual channel DDR4 SODIMMs, 1.2V, max **64GB** @ 2666MHz, ECC Memory Support (Xeon only)
 - 2 x M.2 key M slots: 42/80 + 42/80/110 PCH-attached PCIe x4 Gen3 NVMe or SATA3 SSD, RAID-0 and RAID-1 capable
 - Intel® Optane™ SSD and Intel® Optane™ Memory M10 and H10 ready
 - Discrete TPM 2.0
 - Runtime BIOS Resilience with Dynamic Attestation
 - HDMI 2.0a connector
 - 2 x Thunderbolt™ 3 ports
 - Supports 3 x 4K displays (Intel® UHD Graphics)
 - 2 x Intel® 10/100/1000 Mbps (i219-LM and i210-AT) Ethernet ports
 - Intel® Wi-Fi 6 AX200 2.4Gbps, WiAMT + Bluetooth v5, dual internal antennas
 - 4 x USB 3.1 Gen2 Type-A connectors (rear); **6x total USB 3.1 Gen2 ports**
 - Up to 7.1 multichannel digital audio via HDMI or DisplayPort signals
 - 3.5mm rear speaker / TOSLINK combo jack
 - Internal Front Panel Audio, CEC, 2x USB 3.1 headers, 2x USB 2.0 headers
- **Quartz Canyon chassis**:
 - B** • PCIe X16 slot with 6+2-pin & 6-pin PCIe power connectors, up to 225W, up to 8" card length, dual-slot capable
 - C** • PCIe X4 slot
 - CPU-attached M.2 slot 42/80/110 PCIe X4 Gen 3, Intel® Optane™ SSD ready
 - SDXC slot with UHS-II support
 - 2 x USB 3.1 Gen2 Type-A (front); **6x total USB 3.1 Gen2 ports**
 - 1 x USB 2.0 Type-A (internal) connectors
 - 3.5mm front stereo headset jack
 - Plastic with metal inner frame, Kensington lock with panel security
 - 238 x 216 x 96 mm (5.0 L)
 - 500W internal power supply with geo-specific C13 AC cords
- Microsoft Windows* 10 logo, compatible with Windows Server 2019; compatible with various Linux distros
- Individual bulk packaging
- **Three Year Product Life Cycle, Three Year Warranty**

Available SKUs

Mini PC Kit Chassis Compute Element

Intel® NUC 9 Pro

Quartz Canyon Kit Ordering Codes

Product Code	MM#	AC Cord (C13)	Processor
Quartz Canyon Kit – NUC9VXQNX			
BKNUC9VXQNX	999DNA	None	Xeon E-2286M
BKNUC9VXQNX1	999DNC	US	
BKNUC9VXQNX2	999DND	EU	
BKNUC9VXQNX3	999DNF	UK	
BKNUC9VXQNX4	999DNG	AU	
BKNUC9VXQNX6	999DNH	CN	
Quartz Canyon Kit – NUC9V7QNX			
BKNUC9V7QNX	999DNJ	None	9 th Generation Core™ i7-9850H
BKNUC9V7QNX1	999DNK	US	
BKNUC9V7QNX2	999DNL	EU	
BKNUC9V7QNX3	999DNM	UK	
BKNUC9V7QNX4	999DNN	AU	
BKNUC9V7QNX6	999DNP	CN	

Quartz Canyon Compute Element Ordering Codes

Product Code	MM#	Processor
BKNUC9VXQNB	999LX2	Xeon® E-2286M
BKNUC9V7QNB	999LX3	9 th Gen i7-9850H

West Cove Board Element Ordering Codes

Product Code	MM#
BKBBWC1B1	999M2A

All products available at Disti

Intel® NUC Pro Chassis Element (U-series)

Support for Intel® NUC Compute Element

All [Chandler Bay](#) and [Elk Bay](#) Compute Elements are supported in Fort Beach.



CMCM2FB: Base



CMCM2FBAV: Video Capture & Audio

- Requires Intel® NUC Compute Element
- **Actively-Cooled chassis with I/O board installed**
- Two design implementations: **Base (CMCM2FB)**, **Video Capture & Audio (CMCM2FBAV)**
- **Dual M.2 22x80 key M** slots for PCIe x4 NVMe and SATA SSDs
- **Two HDMI 2.0a** with built-in CEC, support for dual 4k@60Hz
- **Intel® Optane™ Memory H10 with Solid State Storage** ready
- **Intel® i219-LM** 10/100/1000 Mbps RJ45 Ethernet; **2nd Intel® i211-AT** 10/100/1000 Mbps RJ45 Ethernet
- 1x front and 2x rear **USB 3.2 Gen 2** type A ports
- 1x front and 2x rear **USB 2.0** type A ports
- Up to 7.1 multichannel (or dual 8-channel) digital audio via HDMI
- **Qualified for 24x7 operation; delayed AC start; DC overvoltage protection**
- **Display emulation** (headless display, virtual display, persistent displays)
- 12 – 24V_{DC} rear jack
- Metal chassis, Kensington lock with base security
 - 0~35degC external ambient operating temperature
 - 19V_{DC} 90W power supply adapter with geo-specific AC cords (IEC C5 connector)
 - VESA mounting plate included
 - Internal Wi-Fi and Bluetooth antennas
 - Chassis dimensions: 200 x 145 x 35 mm (w/ rubber feet)
- Microsoft Windows* 10, Windows 10 IOT Enterprise, compatible with various Linux distros
- Individual brown-box packaging
- **Three Year Product Life Cycle, Three Year Warranty**

- **Video Capture & Audio Version Additional Features**
- **HDMI Video Capture up to 1080p with HDMI Passthrough**
- **3.5mm Audio In and Out jacks**

Available SKUs

Mini PC

Kit

Chassis

Compute Element

Intel® NUC Pro Chassis Element (U-series)

"Fort Beach" Chassis

[Back to Roadmap](#)

Pre-Production Samples

Product Code	MM#	Description
PPCMCM2FBAV1	99A2N4	Intel® NUC Pro Chassis Element CMCM2FBAV, single pack, PP

Fort Beach Carrier Chassis Ordering Codes (CMCM2FB)

Product Code	MM#	Availability at Disti	Description
BKCMCM2FB	99A2P2	Available	Intel® NUC Pro Chassis Element CMCM2FB, no cord, 5 pack
BKCMCM2FB1	99A2P3	Available	Intel® NUC Pro Chassis Element CMCM2FB, US cord, 5 pack
BKCMCM2FB2	99A2P6	Available	Intel® NUC Pro Chassis Element CMCM2FB, EU cord, 5 pack
BKCMCM2FB3	99A2PC	Available	Intel® NUC Pro Chassis Element CMCM2FB, UK cord, 5 pack
BKCMCM2FB4	99A2PD	Available	Intel® NUC Pro Chassis Element CMCM2FB, AU cord, 5 pack






Fort Beach Carrier Chassis Ordering Codes (CMCM2FBAV)

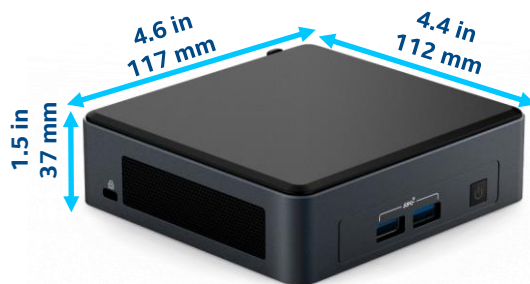
BKCMCM2FBAV	99A2N5	Available	Intel® NUC Pro Chassis Element CMCM2FBAV, no cord, 5 pack
BKCMCM2FBAV1	99A2NJ	Available	Intel® NUC Pro Chassis Element CMCM2FBAV, US cord, 5 pack
BKCMCM2FBAV2	99A2NZ	Available	Intel® NUC Pro Chassis Element CMCM2FBAV, EU cord, 5 pack
BKCMCM2FBAV3	99A2P0	Available	Intel® NUC Pro Chassis Element CMCM2FBAV, UK cord, 5 pack
BKCMCM2FBAV4	99A2P1	Available	Intel® NUC Pro Chassis Element CMCM2FBAV, AU cord, 5 pack

Intel® NUC 11 Pro

"Tiger Canyon"

Back to Roadmap

	11th Generation Intel® Core™ i7-1185G7 Intel® Iris™ Xe Graphics, Intel® vPro® Technology 3.0GHz@28W, up to 4.8GHz Turbo, 4 Cores, 8 Threads, 12MB L3 Cache
	11th Generation Intel® Core™ i7-1165G7 Intel® Iris™ Xe Graphics 2.8GHz@28W, up to 4.7GHz Turbo, 4 Cores, 8 Threads, 12MB L3 Cache
	11th Generation Intel® Core™ i5-1145G7 Intel® Iris™ Xe Graphics, Intel® vPro® Technology 2.6GHz@28W, up to 4.4GHz Turbo, 4 Cores, 8 Threads, 8MB L3 Cache
	11th Generation Intel® Core™ i5-1135G7 Intel® Iris™ Xe Graphics 2.4GHz@28W, up to 4.2GHz Turbo, 4 Cores, 8 Threads, 8MB L3 Cache
	11th Generation Intel® Core™ i3-1115G4 Intel® UHD Graphics ~1.9GHz@15W, up to 4.1GHz Turbo, 2 Cores, 4 Threads, 6MB L3 Cache



- **Up to Quad Extended Displays:**
 - Dual HDMI 2.0b (4K@60Hz), with built-in CEC per port
 - Dual Thunderbolt ports (incl. DP 1.4a and USB 4) via back panel type C connectors
- M.2 22x80 key M slot for PCIe x4 Gen 4 NVMe SSD
- M.2 22x42 key B slot for PCIe x1 Gen 3, USB 3.2 Gen 2, USB 2.0 and SATA SSD expandability
- Intel® i225-LM 10/100/1000/2500 Mbps RJ45 Ethernet
- Dual LAN SKUs: 2nd Intel® i225-LM Ethernet and 2 x additional USB 2.0 ports on expansion module (expansion module pre-installed on M.2 22x42 Key B slot and backpanel expansion bay)
- Intel® Wi-Fi 6 AX201 vPro (i7 vPro and i5 vPro kits), non-vPro (other kits) on M.2 slot
- Discrete TPM 2.0 (worldwide and China options; i7 vPro and i5 vPro SKUs only)
- Dual-channel DDR4-3200 SODIMMs, 1.2V, 64GB max.
- 2 x front and 1 x rear USB 3.2 Gen 2 type A ports
- 1x rear type A and 2 x internal USB 2.0 headers (all USB ports with individual USB power control)
- 1 x RS232 serial port header
- Up to 7.1 multichannel (or 8-channel) digital audio on HDMI and DP type C ports
- Front panel header (with Vcc5/1A, 5Vsby2A, 3.3Vsby/1A)
- Qualified for 24x7 operation
- Delayed AC start; Auto CMOS reset; DC transient voltage suppression
- Display emulation (headless display, virtual display, persistent displays) via HDMI
- 12 – 24V_{DC} ±5% DC input on rear jack, internal 2x2 power connector, with OVP/UVP
- Matte textured chassis, replaceable lid, Kensington lock with base security, Cable locking arm
 - 0~40degC external ambient operating temperature tolerance
 - 19VDC power supply adapter with geo-specific AC cords (IEC C5 connector)
 - VESA mounting plate included
 - Tall kit only: 2.5" drive bay (7mm), and internal expansion bay via backpanel (DB9 punched bracket, or 2nd LAN and 2 x additional USB 2.0 ports on expansion card)
- "Tall" H chassis: 117 x 112 x 54 mm; "Slim" K chassis: 117 x 112 x 37mm; Board: 104 x 102 mm
- Microsoft Windows* 10 (logo'd), Windows 10 IOT Enterprise
- Compatible with various Linux distros
- Individual brown-box packaging
- Three-year availability, Three-year warranty

Available SKUs

Mini PC

Kit

Chassis

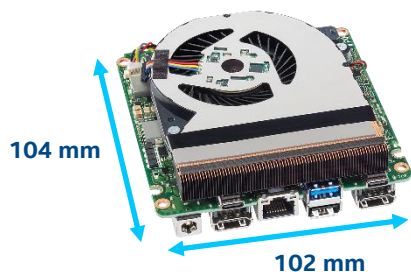
Board

Intel® NUC 11 Pro

“Tiger Canyon” Board

[Back to Roadmap](#)

	11th Generation Intel® Core™ i7-1185G7 Intel® Iris™ Xe Graphics, Intel® vPro® Technology 3.0GHz@28W, up to 4.8GHz Turbo, 4 Cores, 8 Threads, 12MB L3 Cache
	11th Generation Intel® Core™ i7-1165G7 Intel® Iris™ Xe Graphics 2.8GHz@28W, up to 4.7GHz Turbo, 4 Cores, 8 Threads, 12MB L3 Cache
	11th Generation Intel® Core™ i5-1145G7 Intel® Iris™ Xe Graphics, Intel® vPro® Technology 2.6GHz@28W, up to 4.4GHz Turbo, 4 Cores, 8 Threads, 8MB L3 Cache
	11th Generation Intel® Core™ i5-1135G7 Intel® Iris™ Xe Graphics 2.4GHz@28W, up to 4.2GHz Turbo, 4 Cores, 8 Threads, 8MB L3 Cache
	11th Generation Intel® Core™ i3-1115G4 Intel® UHD Graphics ~1.9GHz@15W, up to 4.1GHz Turbo, 2 Cores, 4 Threads, 6MB L3 Cache



- Up to Quad Extended Displays:
 - Dual HDMI 2.0b (4K@60Hz), with built-in CEC per port
 - Dual Thunderbolt ports (incl. DP 1.4a and USB 4) via back panel type C connectors
- M.2 22x80 key M slot for PCIe x4 Gen 4 NVMe SSD
- M.2 22x42 key B slot for PCIe x1 Gen 3, USB 3.2 Gen 2, USB 2.0 and SATA SSD expandability
- Intel® i225-LM 10/100/1000/2500 Mbps RJ45 Ethernet
- M.2 2230 key E slot for Intel® Wi-Fi 6 AX201 card (sold separately)
- TPM 2.0 (i7 vPro and i5 vPro SKUs only)
- Dual-channel DDR4-3200 SODIMMs, 1.2V, 64GB max.
- 2 x front and 1 x rear USB 3.2 Gen 2 type A ports
- 1x rear type A and 2 x internal USB 2.0 headers (all USB ports with individual USB power control)
- 1 x RS232 serial port header
- Up to 7.1 multichannel (or 8-channel) digital audio on HDMI and DP type C ports
- Front panel header (with Vcc5/1A, 5Vsby2A, 3.3Vsby/1A)
- Qualified for 24x7 operation
- Delayed AC start; Auto CMOS reset; DC transient voltage suppression
- Display emulation (headless display, virtual display, persistent displays) via HDMI
- 12 – 24V_{DC} ±5% DC input on rear jack, internal 2x2 power connector, with OVP/UVP
- Board dimensions: 104 x 102 mm
- Microsoft Windows* 10 (logo'd), Windows 10 IOT Enterprise
- Compatible with various Linux distros
- 5-pack bulk packaging
- Three-year availability, Three-year warranty

Available SKUs

Mini PC

Kit

Chassis

Board

Intel® NUC 11 Pro

Tiger Canyon i7 vPro "Tall" Kit – NUC11TNHv7

Product Code	MM#	Availability at Disti	AC Cord (C5)	Processor	TPM
BNUC11TNHv70000	99A7JR	WW22'21	None	11th Generation Core™ i7-1185G7	WW
BNUC11TNHv70001	99A7JT	WW22'21	US		WW
BNUC11TNHv70002	99A7JV	WW22'21	EU		WW
BNUC11TNHc70006	99A7JW	Available	CN		CN

Tiger Canyon i7 vPro "Slim" Kit – NUC11TNKv7

Product Code	MM#	Availability at Disti	AC Cord (C5)	Processor	TPM
BNUC11TNKv70000	99A7JH	Available	None	11th Generation Core™ i7-1185G7	WW
BNUC11TNKv70001	99A7JK	WW22'21	US		WW
BNUC11TNKv70002	99A7JL	Available	EU		WW

Tiger Canyon i5 vPro "Tall" Kit – NUC11TNHv5

Product Code	MM#	Availability at Disti	AC Cord (C5)	Processor	TPM
BNUC11TNHv50000	99A7AF	Available	None	11th Generation Core™ i5-1145G7	WW
BNUC11TNHv50001	99A7AG	WW22'21	US		WW
BNUC11TNHv50002	99A7AH	WW22'21	EU		WW
BNUC11TNHc50006	99A7AJ	Available	CN		CN

Tiger Canyon i5 vPro "Slim" Kit – NUC11TNKv5v

Product Code	MM#	Availability at Disti	AC Cord (C5)	Processor	TPM
BNUC11TNKv50000	99A6X5	WW22'21	None	11th Generation Core™ i5-1145G7	WW
BNUC11TNKv50001	99A78W	Available	US		WW
BNUC11TNKv50002	99A79Z	Available	EU		WW

Tiger Canyon vPro Dual LAN Kits

Product Code	MM#	Availability at Disti	AC Cord (C5)	Processor	2 nd LAN
BNUC11TNHv70L00	99A7JX	WW22'21	None	11 th Generation Core™ i7-1185G7	2.5GbE & Dual USB 2.0
BNUC11TNHv50L00	99A7AK	Available	None	11 th Generation Core™ i5-1145G7	2.5GbE & Dual USB 2.0

Intel® NUC 11 Pro

"Tiger Canyon" non-vPro Kits

[Back to Roadmap](#)

Tiger Canyon i7 "Tall" Kit – NUC11TNHi7

Product Code	MM#	Availability at Disti	AC Cord (C5)	Processor
BNUC11TNHi70000	99A8FA	WW22'21	None	11 th Generation Core™ i7-1165G7
BNUC11TNHi70001	99A8FC	WW22'21	US	
BNUC11TNHi70002	99A8FD	WW22'21	EU	
BNUC11TNHi70005	99A8FF	WW22'21	IN	

Tiger Canyon i7 "Slim" Kit – NUC11TNKi7

Product Code	MM#	Availability at Disti	AC Cord (C5)	Processor
BNUC11TNKi70000	99A8A8	Available	None	11 th Generation Core™ i7-1165G7
BNUC11TNKi70001	99A8A9	WW22'21	US	
BNUC11TNKi70002	99A8AF	WW22'21	EU	

Tiger Canyon i5 "Tall" Kit – NUC11TNHi5

Product Code	MM#	Availability at Disti	AC Cord (C5)	Processor
BNUC11TNHi50000	99A8F6	Available	None	11 th Generation Core™ i5-1135G7
BNUC11TNHi50001	99A8F7	Available	US	
BNUC11TNHi50002	99A8F8	Available	EU	
BNUC11TNHi50005	99A8F9	WW22'21	IN	

Tiger Canyon i5 "Slim" Kit – NUC11TNKi5

Product Code	MM#	Availability at Disti	AC Cord (C5)	Processor
BNUC11TNKi50000	99A8A5	Available	None	11 th Generation Core™ i5-1135G7
BNUC11TNKi50001	99A8A6	WW22'21	US	
BNUC11TNKi50002	99A8A7	WW22'21	EU	

Tiger Canyon i3 "Tall" Kit – NUC11TNHi3

Product Code	MM#	Availability at Disti	AC Cord (C5)	Processor
BNUC11TNHi30000	99A8F1	Available	None	11 th Generation Core™ i3-1115G4
BNUC11TNHi30001	99A8F2	Available	US	
BNUC11TNHi30002	99A8F3	Available	EU	
BNUC11TNHi30005	99A8F4	Available	IN	
BNUC11TNHi30006	99A8F5	Available	CN	

Tiger Canyon i3 "Slim" Kit – NUC11TNKi3vzv

Product Code	MM#	Availability at Disti	AC Cord (C5)	Processor
BNUC11TNKi30000	99A8A2	Available	None	11 th Generation Core™ i3-1115G4
BNUC11TNKi30001	99A8A3	Available	US	
BNUC11TNKi30002	99A8A4	Available	EU	

Tiger Canyon non-vPro Dual LAN Kits

Product Code	MM#	Availability at Disti	AC Cord (C5)	Processor	2 nd LAN
BNUC11TNHi70L00	99A8AL	WW22'21	None	11 th Generation Core™ i7-1165G7	2.5GbE & Dual USB 2.0
BNUC11TNHi50L00	99A8AK	WW22'21	None	11 th Generation Core™ i5-1135G7	2.5GbE & Dual USB 2.0
BNUC11TNHi30L00	99A8AJ	WW22'21	None	11 th Generation Core™ i3-1115G4	2.5GbE & Dual USB 2.0

Intel® NUC 11 Pro

"Tiger Canyon" L9 & L10

[Back to Roadmap](#)

Tiger Canyon Mini PC Ordering Codes

Product Code	MM#	Availability at Disti	AC Cord (C5)	Processor	RAM	Storage	OS
Tiger Canyon i7 vPro Mini PC – NUC11TNKv7							
BNUC11TNKv70QC0	99AA60	Available	None	11th Generation Core™ i7-1185G7	16GB DDR4	500GB Gen4 NVMe	Win 10 Pro
BNUC11TNKv70QC1	99AA61	WW22'21	US				
BNUC11TNKv70QC2	99AA62	WW22'21	EU				
Tiger Canyon i5 vPro Mini PC – NUC11TNKv5							
BNUC11TNKv50WC0	99AA5W	Available	None	11th Generation Core™ i5-1145G7	8GB DDR4	500GB Gen4 NVMe	Win 10 Pro
BNUC11TNKv50WC1	99AA5X	WW22'21	US				
BNUC11TNKv50WC2	99AA5Z	WW22'21	EU				

Tiger Canyon L9 Kits Ordering Codes

Product Code	MM#	Availability at Disti	AC Cord (C5)	Processor	RAM	Storage	OS
Tiger Canyon i7 Kit – NUC11TNHi7							
BNUC11TNHi70Q06	99AA5V	WW22'21	CN	11th Generation Core™ i7-1165G7	16GB DDR4	500GB Gen4 NVMe	None
Tiger Canyon i5 Kit – NUC11TNHi5							
BNUC11TNHi50W06	99AA5R	WW22'21	CN	11th Generation Core™ i5-1135G7	8GB DDR4	500GB Gen4 NVMe	None
Tiger Canyon i3 Kit – NUC11TNHi3							
BNUC11TNHi30P06	99AA5P	Available	CN	11th Generation Core™ i3-1115G4	8GB DDR4	256GB NVMe	None

Intel® NUC 11 Pro

"Tiger Canyon" Board

[Back to Roadmap](#)

Tiger Canyon Board

Product Code	CPU	MM#	Availability at Disti	TPM
BNUC11TNBv70000	11 th Generation Core™ i7 vPro®	99A78V	Available	WW
BNUC11TNBi70000	11 th Generation Core™ i7	99A876	Available	None
BNUC11TNBv50000	11 th Generation Core™ i5 vPro®	99A78T	Available	WW
BNUC11TNBi50000	11 th Generation Core™ i5	99A875	Available	None
BNUC11TNBi30000	11 th Generation Core™ i3	99A874	Available	None

Intel® NUC 8 Pro

"Provo Canyon"

[Back to Roadmap](#)



8th Generation Intel® Core™ i7-8665U (NUC8v7PN)
1.9 GHz to 4.8 GHz Turbo, 4 Core, 8 Thread, 8MB Cache, 25W
Intel® UHD Graphics 620, 300 MHz – 1.15 GHz
Intel® vPro® Technology, Intel® AMT v12



8th Generation Intel® Core™ i5-8365U (NUC8v5PN)
1.6 GHz to 4.1 GHz Turbo, 4 Core, 8 Thread 6MB Cache, 25W
Intel® UHD Graphics 620, 300 MHz – 1.10 GHz
Intel® vPro® Technology, Intel® AMT v12



8th Generation Intel® Core™ i3-8145U (NUC8i3PN)
2.1 GHz to 3.9 GHz Turbo, 2 Core, 4 Thread, 4MB Cache, 15W
Intel® UHD Graphics 620, 300 MHz – 1.00 GHz



- Dual HDMI 2.0a (4K 60Hz, HDR), w/HDCP2.2 and **built-in CEC for both ports**
- **Thunderbolt 3** (incl. DP 1.2 and USB3.1) via back panel **type C** connector
- **Internal 4-lane eDP 1.4 connector** (support for up to 4k@60Hz)
- **Triple external display support via dual DP/MST on Type C plus HDMI**
- **M.2 22x80 key M** slot for PCIe x4 NVMe or SATA SSD
- **Intel® Optane™ Memory** ready; **Intel® Optane™ Memory H10 with Solid State Storage** ready
- Intel® i219-LM 10/100/1000 Mbps RJ45 Ethernet
- Intel® Wireless-AC 9560 vPro (i7 vPro and i5 vPro kits), Intel® Wireless-AC 9560 (i3 kits) on M.2 slot
- TPM 2.0 (worldwide and China options; i7 vPro and i5 vPro SKUs only)
- Dual-channel DDR4-2400 1.2V SODIMMs (up to 2x 32GB for 64GB total maximum memory)
- 2x front and 1x rear **USB 3.2 Gen 2** type A ports, 1x internal USB 3.0 header
- 1x rear type A and 2x internal USB 2.0 headers (all USB ports with individual USB power control)
- 1x RS232 serial port header
- Up to 7.1 multichannel (or dual 8-channel) digital audio via HDMI
- Front panel header (with Vcc5/1A, 5Vsby/2A, 3.3Vsby/1A)
- **Qualified for 24x7 operation**
- **Delayed AC start; DC transient voltage suppression**
- **Display emulation (headless display, 2nd virtual display, persistent displays) via HDMI**
- **12 – 24V_{DC} ±5% DC input on rear jack and internal 2x2 power connector, with OVP**
- Plastic chassis, replaceable lid, Kensington lock with base security, **DC cable strain relief**
 - 0~40degC external ambient operating temperature
 - 19VDC 90W power supply adapter with geo-specific AC cords (IEC C5 connector)
 - VESA mounting plate included
 - Tall kit only: 2.5" drive bay (7mm), and internal expansion bay via backpanel (1x DB9 punched bracket pre-installed)
- "Tall" H chassis: 117 x 112 x 53 mm, "Slim" K chassis: 117 x 112 x 37mm, Board: 101.6 x 104.1 mm
- Microsoft Windows* 10 (logo'd), Windows 10 IOT Enterprise
- Compatible with various Linux distros
- Individual brown-box packaging
- **Three Year Product Life Cycle, Three Year Warranty**

Available SKUs

Mini PC

Kit

Chassis

Board

Intel® NUC 8 Pro

"Provo Canyon" Board

[Back to Roadmap](#)



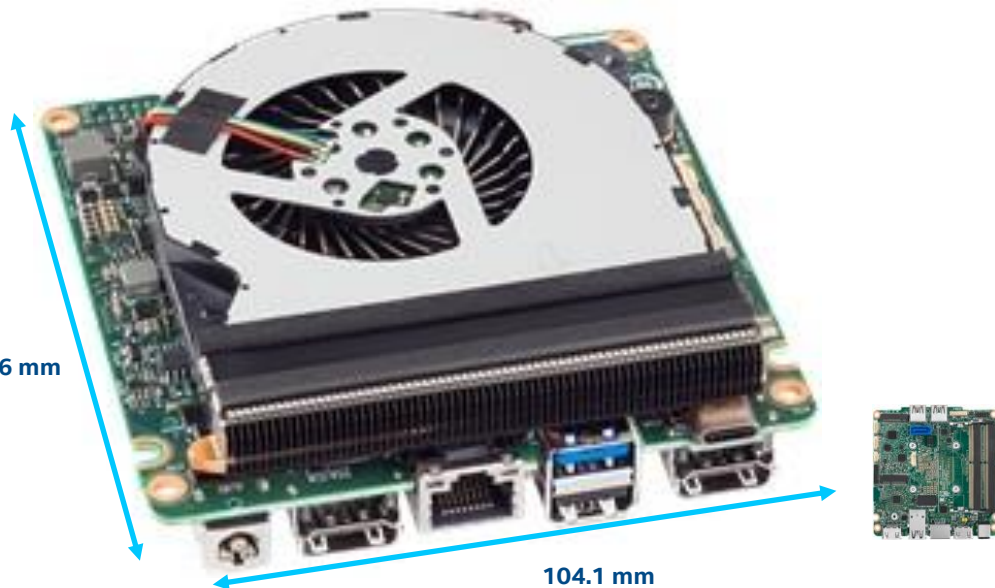
8th Generation Intel® Core™ i7-8665U (NUC8v7PN)
1.9 GHz to 4.8 GHz Turbo, 4 Core, 8 Thread, 8MB Cache, 25W
Intel® UHD Graphics 620, 300 MHz – 1.15 GHz
Intel® vPro® Technology, Intel® AMT v12



8th Generation Intel® Core™ i5-8365U (NUC8v5PN)
1.6 GHz to 4.1 GHz Turbo, 4 Core, 8 Thread 6MB Cache, 25W
Intel® UHD Graphics 620, 300 MHz – 1.10 GHz
Intel® vPro® Technology, Intel® AMT v12



8th Generation Intel® Core™ i3-8145U (NUC8i3PN)
2.1 GHz to 3.9 GHz Turbo, 2 Core, 4 Thread, 4MB Cache, 15W
Intel® UHD Graphics 620, 300 MHz – 1.00 GHz



- Dual HDMI 2.0a (4K 60Hz, HDR), w/HDCP2.2 and **built-in CEC for both ports**
- **Thunderbolt 3** (incl. DP 1.2 and USB3.1) via back panel **type C** connector
- Internal 4-lane eDP 1.4 connector (support for up to 4k@60Hz)
- **Triple external display support via dual DP/MST on Type C plus HDMI** (or internally via dual HDMI plus eDP on board SKU)
- **M.2 22x80 key M** slot for PCIe x4 NVMe or SATA SSD
- **Intel® Optane™ Memory** ready; **Intel® Optane™ Memory H10 with Solid State Storage** ready
- Intel® i219-LM 10/100/1000 Mbps RJ45 Ethernet
- M.2 2230 key E slot for Intel® Wireless-AC 9560 card (sold separately)
- Discrete TPM 2.0 (i7 vPro and i5 vPro SKUs only)
- Dual-channel DDR4-2400 1.2V SODIMMs (up to 2x 32GB for 64GB total maximum memory)
- 2x front and 1x rear **USB 3.2 Gen 2** type A ports, 1x internal USB 3.0 header
- 1x rear type A and 2x internal USB 2.0 headers (all USB ports with individual USB power control)
- 1x RS232 serial port header
- Up to 7.1 multichannel (or dual 8-channel) digital audio via HDMI
- Front panel header (with Vcc5/1A, 5Vsby/2A, 3.3Vsby/1A)
- **Qualified for 24x7 operation**
- **Delayed AC start; DC transient voltage suppression**
- **Display emulation (headless display, 2nd virtual display, persistent displays) via HDMI**
- **12 – 24V_{DC} ±5% DC input on rear jack and internal 2x2 power connector, with OVP**
- Board dimensions: 101.6 x 104.1 mm
- Microsoft Windows* 10 (logo'd), Windows 10 IOT Enterprise
- Compatible with various Linux distros
- 5-pack bulk packaging
- **Three Year Product Life Cycle, Three Year Warranty**

Available SKUs

Mini PC

Kit

Chassis

Board

Intel® NUC 8 Pro

Provo Canyon i7 vPro “Tall” Kit – NUC8v7PNH				
Product Code	MM#	AC Cord (C5)	Processor	TPM
BKNUC8v7PNH	999L0T	None	8 th Generation Core™ i7-8665U	WW
BKNUC8v7PNH5	99A6F4	IN		WW
BKNUC8v7PNH6	999L10	CN		CN

Provo Canyon i7 vPro “Slim” Kit – NUC8v7PNK				
Product Code	MM#	AC Cord (C5)	Processor	TPM
BKNUC8v7PNK	999L08	None	8 th Generation Core™ i7-8665U	WW

Provo Canyon i5 vPro “Tall” Kit – NUC8v5PNH				
Product Code	MM#	AC Cord	Processor	TPM
BKNUC8v5PNH	999KXV	None	8 th Generation Core™ i5-8365U	WW
BKNUC8v5PNH5	99A6F5	IN		WW
BKNUC8v5PNH6	999KZ6	CN		CN

Provo Canyon i5 vPro “Slim” Kit – NUC8v5PNK				
Product Code	MM#	AC Cord (C5)	Processor	TPM
BKNUC8v5PNK	999KX7	None	8 th Generation Core™ i5-8365U	WW
BKNUC8v5PNK1	999KX8	US		WW

Provo Canyon i3 “Tall” Kit – NUC8i3PNH				
Product Code	MM#	AC Cord (C5)	Processor	TPM
BKNUC8i3PNH	999KTR	None	8 th Generation Core™ i3-8145U	None
BKNUC8i3PNH5	99A6F6	IN		None

Provo Canyon i3 “Slim” Kit – NUC8i3PNK				
Product Code	MM#	AC Cord (C5)	Processor	TPM
BKNUC8i3PNK	999KTJ	None	8 th Generation Core™ i3-8145U	None

All products available at Disti

Intel® NUC 8 Pro

Provo Canyon Board			
Product Code	MM#	Processor	TPM
BKNUC8v7PNB	999L05	8 th Generation Core™ i7 vPro™	WW
BKNUC8v5PNB	999KX5	8 th Generation Core™ i5 vPro™	WW
BKNUC8i3PNB	999KT6	8 th Generation Core™ i3	None

All products available at Disti

Intel® NUC Rugged

Engineered For Robustness

Fanless / dust-resistant*

3-Year product availability

Customizable IO

Validated for 24/7 operation and other industry-leading Intel reliability tests

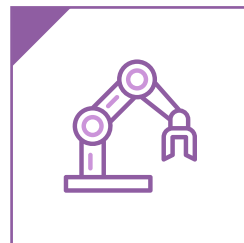
Board-level robustness against dirty (oscillating) DC input*

0-40°C external ambient operating temperature tolerance

**Varies by product*



Target Usage Scenarios



Rugged



Visual Solutions



Edge Data Analytics

[Back to table of Contents](#)

Intel® NUC 8 Rugged

“Chaco Canyon”

Back to Roadmap



Intel® Celeron® Processor N3350 (NUC8CCH)
1.1 GHz to 2.4 GHz Burst, 2 Core, 2 Thread, 2 MB cache,
6W Intel® HD Graphics 500



Intel® Celeron® Processor N3350 (NUC8CCHN**)
1.1 GHz to 2.4 GHz Burst, 2 Core, 2 Thread, 2 MB cache,
6W Intel® HD Graphics 500



- Dual HDMI (1 x HDMI 2.0a, 1 x HDMI 1.4), with **built-in CEC for both ports** (Support for single 4k@60Hz or dual 1080@60Hz)
- **IP50 rated fanless and ventless dust-resistant chassis with custom plugs for unused ports**
- **Internal 4-lane eDP connector** (support for up to 4k@60Hz)
- **4GB dual-channel LPDDR3 RAM soldered-down**
- **64GB eMMC** soldered-down; **M.2 2280 key M** slot for PCIe x4 NVMe or SATA SSD
- Intel® i211-AT 10/100/1000 Mbps RJ45 Ethernet
- Intel® Wireless-AC 3168 M.2 card pre-installed w/internal antennas (kit SKUs only)
- 1 x front USB 3.0, 1 x rear USB 3.0, 2 x rear USB 2.0
- 1 x internal USB 3.0 header (**host & device modes**)
- 2 x internal USB 2.0 headers (**all USB ports with individual USB power control**)
- **1 x RS232** serial port header
- Up to 7.1 multichannel digital audio via HDMI
- Analog audio stereo output jack in select skus only
- Front-panel header (incl. Vcc5/1A, 5Vsby/2A, 3.3Vsby/1A)
- **Qualified for 24x7 operation**
- **Delayed AC start; DC transient voltage suppression**
- **Display emulation (headless display, 2nd virtual display, persistent displays)**
- **12 – 24V_{DC} ±5% DC input on rear jack and internal 2x2 power connector**
- **New Watchdog Timer Utility** (for Windows) monitors and restarts unresponsive applications or OS
- Plastic chassis, Kensington lock with base security, **DC cable strain relief**
 - 0~40degC external ambient operating temperature
 - 19V_{DC} 65W power supply adapter with geo-specific AC cords (IEC C5 connector)
 - Mounting options: VESA mounting holes built into chassis (for slim profile mounting), picture frame keyholes, mounting indentations for cable ties
 - Front panel expansion bay (compliant with daughtercards from 3rd party functional lids)
- Chassis dimensions: 154 x 108 x 32 mm; Board dimensions: 146 x 102 mm (**3.5" SBC**)
- Supports Microsoft Windows® 10 Pro, Windows 10 IOT Enterprise
- Compatible with various Linux distros
- Individual brown-box packaging
- **Three Year Product Life Cycle, Three Year Warranty**

The product images shown may represent the range of products, or be for illustration purposes only and may not be an exact representation of the product. **Non-audio SKU

Available SKUs

Mini PC

Kit

Chassis

Board

Intel® NUC 8 Rugged

"Chaco Canyon" Board

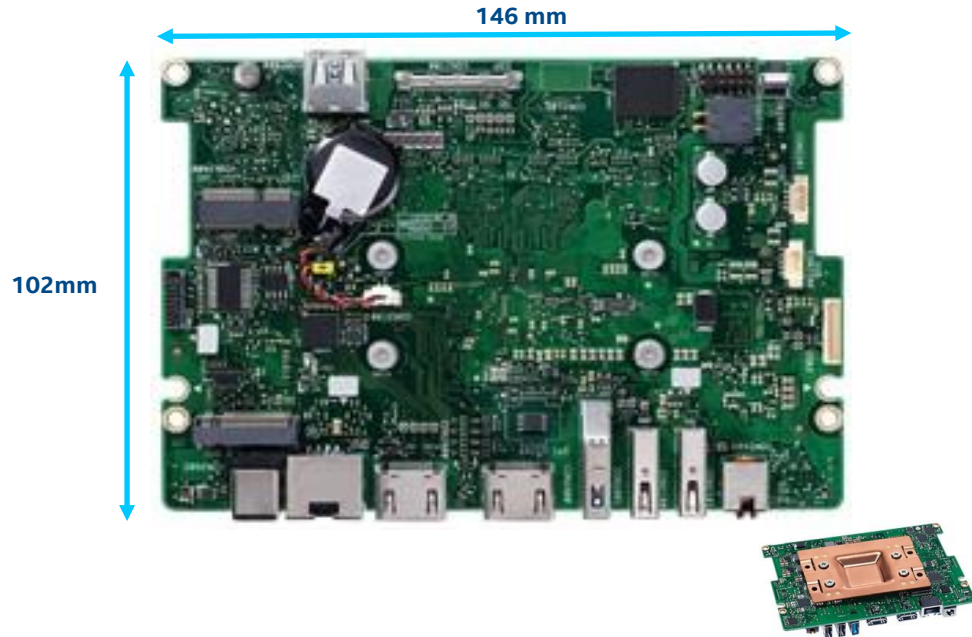
[Back to Roadmap](#)



Intel® Celeron® Processor N3350 (NUC8CCHB)
1.1 GHz to 2.4 GHz Burst, 2 Core, 2 Thread, 2 MB cache,
6W Intel® HD Graphics 500



Intel® Celeron® Processor N3350 (NUC8CCHBN**)
1.1 GHz to 2.4 GHz Burst, 2 Core, 2 Thread, 2 MB cache,
6W Intel® HD Graphics 500



- **Dual HDMI** (1 x HDMI 2.0a, 1 x HDMI 1.4), with **built-in CEC for both ports** (Support for single 4k@60Hz or dual 1080@60Hz)
- **Internal 4-lane eDP connector** (support for up to 4k@60Hz)
- **4GB dual-channel LPDDR3 RAM soldered-down**
- **64GB eMMC** soldered-down; **M.2 2280 key M** slot for PCIe x4 NVMe or SATA SSD
- **Intel® i211-AT** 10/100/1000 Mbps RJ45 Ethernet
- **M.2 2230 key E** slot for Intel® Wireless-AC 3168 card (sold separately)
- 1 x front USB 3.0, 1 x rear USB 3.0, 2 x rear USB 2.0
- 1 x internal USB 3.0 header (**host & device modes**)
- 2 x internal USB 2.0 headers (**all USB ports with individual USB power control**)
- **1 x RS232** serial port header
- Up to 7.1 multichannel digital audio via HDMI
- Analog audio stereo output jack in select skus only
- Front-panel header (incl. Vcc5/1A, 5Vsby/2A, 3.3Vsby/1A)
- **Qualified for 24x7 operation**
- **Delayed AC start; DC transient voltage suppression**
- **Display emulation (headless display, 2nd virtual display, persistent displays)**
- **12 – 24V_{DC} ±5% DC input on rear jack and internal 2x2 power connector**
- **New Watchdog Timer Utility** monitors and restarts unresponsive applications or OS
- Board dimensions: 146 x 102 mm (**3.5" SBC**)
- Supports Microsoft Windows® 10 Pro, Windows 10 IOT Enterprise
- Compatible with various Linux distros
- 5-pack bulk packaging
- **Three Year Product Life Cycle, Three Year Warranty**

The product images shown may represent the range of products, or be for illustration purposes only and may not be an exact representation of the product. **Non-audio SKU

Available SKUs



Mini PC



Kit



Chassis



Board

Intel® NUC 8 Rugged

“Chaco Canyon”

[Back to Roadmap](#)

Chaco Canyon Kit – NUC8CCHKRN (Without analog audio codec / line-out jack)

Product Code	MM#	AC Cord (C5)	Processor
BKNUC8CCHKRN	99AHRH	None	Intel® Celeron N3350
BKNUC8CCHKRN1	99AHRJ	US	
BKNUC8CCHKRN2	99AHRK	EU	
BKNUC8CCHKRN4	99AHRM	AU	

(Without analog audio codec / line-out jack & digital mics)

All products available at Distri

Intel® NUC 8 Rugged

Chaco Canyon Board – NUC8CCHB (Without analog audio codec / line-out jack)

Product Code	MM#
BKNUC8CCHBN	99AHRR

Intel® NUC 8 Rugged Chassis Element (U-Series)

Support for Intel® NUC Compute Element

All [Chandler Bay](#) and [Elk Bay](#) Compute Elements are supported in Austin Beach.



- Requires Intel® NUC Compute Element
- Fanless, dust-resistant chassis with I/O board installed; preliminary IP50 rating
- Design implementation: **Expandable** (CMCR1ABA)
- Dual M.2 22x80 key M slots for PCIe x4 NVMe and SATA SSDs
- Two HDMI 2.0a ports with **built-in CEC**, plus internal **4-lane eDP** interface
 - Support for dual 4k@60Hz via HDMI 2.0a, plus additional 4k@60 via eDP
- Intel® Optane™ Memory H10 with **Solid State Storage** ready
- Intel® i219-LM 10/100/1000 Mbps RJ45 Ethernet
- 1x front and 2x backpanel **USB 3.2 Gen 2** type A ports, 1x internal USB 3.0 header
- 1x front port and 2x internal USB 2.0 headers
- 2x **RS232** serial port headers
- Up to 7.1 multichannel (or dual 8-channel) digital audio via HDMI
- Front panel header (with Vcc5/1A, 5Vsby2A, 3.3Vsby/1A)
- **Qualified for 24x7 operation**
- **Delayed AC start; DC overvoltage protection**
- **Display emulation** (headless display, virtual display, persistent displays)
- 12 – 24V_{DC} rear jack, internal 2x2 power connector
- Metal chassis, Kensington lock with base security
 - 0~40degC external ambient operating temperature
 - 19V_{DC} 90W power supply adapter with geo-specific AC cords (IEC C5 connector)
 - VESA mounting plate included, with mechanical support for power supply adapter
 - External dipole antennas
 - Internal expansion bay via backpanel (2x DB9 punched bracket pre-installed)
 - Chassis dimensions: 254 x 152.4 x 36 mm (plus additional 4.8mm of rubber feet height)
- Microsoft Windows* 10, Windows 10 IOT Enterprise, compatible with various Linux distros
- Individual brown-box packaging
- **Three Year Product Life Cycle**
- **Three Year Warranty**

Available SKUs

- Mini PC Kit Chassis Board

Intel® NUC 8 Rugged Chassis Element (U-Series)

"Austin Beach Dual LAN" Chassis

[Back to Roadmap](#)

Support for Intel® NUC Compute Element

All [Chandler Bay](#) and [Elk Bay](#) Compute Elements are supported in Austin Beach.



- Requires Intel® NUC Compute Element
- Fanless, dust-resistant chassis with I/O board installed; preliminary IP50 rating
- Design implementation: **Dual LAN** (CMCR1ABB)
- **Dual M.2 22x80 key M** slots for PCIe x4 NVMe and SATA SSDs
- **Two HDMI 2.0a** ports with **built-in CEC**
 - Support for dual 4k@60Hz via HDMI 2.0a
- **Intel® Optane™ Memory H10 with Solid State Storage** ready
- **Dual GbE LAN: Intel® i219-LM and Intel® i211-AT** 10/100/1000 Mbps RJ45 Ethernet
- 1x front and 2x backpanel **USB 3.2 Gen 2** type A ports, 1x internal USB 3.0 header
- 1x front and 2x backpanel USB 2.0 ports
- 2x **RS232** serial port headers
- Up to 7.1 multichannel (or dual 8-channel) digital audio via HDMI
- Front panel header (with Vcc5/1A, 5Vsby2A, 3.3Vsby/1A)
- **Qualified for 24x7 operation**
- **Delayed AC start; DC overvoltage protection**
- **Display emulation** (headless display, virtual display, persistent displays)
- 12 – 24V_{DC} rear jack, internal 2x2 power connector
- Metal chassis, Kensington lock with base security
 - 0~40degC external ambient operating temperature
 - 19V_{DC} 90W power supply adapter with geo-specific AC cords (IEC C5 connector)
 - VESA mounting plate included, with mechanical support for power supply adapter
 - External dipole antennas
 - Chassis dimensions: 254 x 152.4 x 36 mm (plus additional 4.8mm of rubber feet height)
- Microsoft Windows* 10, Windows 10 IOT Enterprise, compatible with various Linux distros
- Individual brown-box packaging
- **Three Year Product Life Cycle**
- **Three Year Warranty**

Available
SKUs

Mini PC Kit Chassis Board

Intel® NUC 8 Rugged Chassis Element (U-Series)

Support for Intel® NUC Compute Element

All [Chandler Bay](#) and [Elk Bay](#) Compute Elements are supported in Austin Beach.



- Requires Intel® NUC Compute Element
- Fanless, dust-resistant chassis with I/O board installed; preliminary IP50 rating
- Design implementation: Multi HDMI (CMCR1ABC)
- Dual M.2 22x80 key M slots for PCIe x4 NVMe and SATA SSDs
- Six HDMI ports (2x HDMI 2.0a, 4x HDMI 1.4) with built-in CEC for all ports
 - Support for dual 4k@60Hz, or six 1080p@60Hz (dual triple-wide 5760x1080 screens)
- Intel® Optane™ Memory H10 with Solid State Storage ready
- Intel® i219-LM 10/100/1000 Mbps RJ45 Ethernet
- 1x front and 2x backpanel USB 3.2 Gen 2 type A ports, 1x internal USB 3.0 header
- 1x front port and 2x internal USB 2.0 headers
- 2x RS232 serial port headers
- Up to 7.1 multichannel (or dual 8-channel) digital audio via HDMI
- Front panel header (with Vcc5/1A, 5Vsby2A, 3.3Vsby/1A)
- Qualified for 24x7 operation
- Delayed AC start; DC overvoltage protection
- Display emulation (headless display, virtual display, persistent displays)
- 12 – 24V_{DC} rear jack, internal 2x2 power connector
- Metal chassis, Kensington lock with base security
 - 0~40degC external ambient operating temperature
 - 19V_{DC} 90W power supply adapter with geo-specific AC cords (IEC C5 connector)
 - VESA mounting plate included, with mechanical support for power supply adapter
 - External dipole antennas
 - Chassis dimensions: 254 x 152.4 x 36 mm (plus additional 4.8mm of rubber feet height)
- Microsoft Windows* 10, Windows 10 IOT Enterprise, compatible with various Linux distros
- Individual brown-box packaging
- Three Year Product Life Cycle
- Three Year Warranty

Available SKUs



Mini PC



Kit



Chassis



Board

Intel® NUC Rugged Chassis Element (U-Series)

Austin Beach Chassis		
Product Code	MM#	MM#
BKCMCR1ABA	999M8V	Rugged Chassis: "Expandable" w/no cord
BKCMCR1ABA1	999M93	Rugged Chassis: "Expandable" w/US cord
BKCMCR1ABA2	999M95	Rugged Chassis: "Expandable" w/EU cord
BKCMCR1ABB	999M96	Rugged Chassis: "Dual LAN" w/no cord
BKCMCR1ABB1	999M97	Rugged Chassis: "Dual LAN" w/US cord
BKCMCR1ABB2	999M98	Rugged Chassis: "Dual LAN" w/EU cord
BKCMCR1ABC	999M9A	Rugged Chassis: "Multi HDMI" w/no cord
BKCMCR1ABC1	999M9C	Rugged Chassis: "Multi HDMI" w/US cord
BKCMCR1ABC2	999M9D	Rugged Chassis: "Multi HDMI" w/EU cord

All products available at Distri

Intel® NUC Essential

Cost-Efficient With Intel® Reliability & Quality

Choose Intel® Celeron or Pentium

Space saving @ 0.53-0.65L

Windows 10 Home preinstalled*

4K @ 60 Hz with UHD*

**Varies by product*



Target Usage Scenarios



Kids Productivity



Streaming



Entry Signage

[Back to table of Contents](#)

Intel® NUC 7 Essential

"June Canyon"

[Back to Roadmap](#)



Intel® Pentium® Silver J5005 (NUC7PJYN)
1.5 GHz - 2.8 GHz burst, 4 core, 4 thread, 10W
Intel® UHD Graphics 605, 800 MHz



Intel® Celeron® J4005 (NUC7CJYN)
2.0 GHz - 2.7 GHz burst, 2 core, 2 thread, 10W
Intel® UHD Graphics 600, 700 MHz



- Dual-channel DDR4-2400 SODIMMs, 1.2V, 8GB maximum
- 2.5" 9.5mm SATA3 bay and port
- 2 x HDMI 2.0a (4K 60Hz), both ports support HDCP 2.2
- Supports 2 x 4K displays
- 10/100/1000 Mbps Ethernet
- Intel® Wireless-AC 9462 soldered-down, IEEE Wi-Fi 5 1x1 + Bluetooth v5, internal antennas
- 2x front USB 3.0 (one charging), 2x rear USB 3.0, and 2x internal USB 2.0 via header
- Up to 7.1 multichannel digital audio via HDMI
- Front Consumer Infrared port
- SDXC slot with UHS-I support
- Plastic with metal inner frame, replaceable lid, Kensington lock with base security
- 115 x 111 x 51 mm
- 12 – 19V_{DC} input range, 19VDC 65W power supply with geo-specific C5 AC cords
- Front Panel, CEC, RGB LED, 2x USB2.0 headers
- Microsoft Windows* 10 logo'd; Certified with Ubuntu 16.04 LTS; compatible with various Linux distros
- Front panel status RGB LED
- VESA mounting plate included
- Individual retail packaging
- **Three-year Warranty**

Available SKUs

Mini PC

Kit

Chassis

Board

Intel® NUC 7 Essential

"June Canyon"

[Back to Roadmap](#)

June Canyon Mini PC Ordering Codes – NUC7CJYSAMN

Product Code	MM#	AC Cord (C5)	Processor	RAM	Storage	OS
BOXNUC7CJYSAMN	99AHT5	None	Intel® Celeron J4005	4GB DDR4	64GB eMMC	Win10 Home
BOXNUC7CJYSAMN1	99AHT6	US				
BOXNUC7CJYSAMN2	99AHT7	EU				

June Canyon Pentium Kit Ordering Codes – NUC7PJYHN

Product Code	MM#	AC Cord (C5)	Processor
BOXNUC7PJYHN	99AHT2	None	Intel® Pentium Silver J5005
BOXNUC7PJYHN1	99AHT3	US	
BOXNUC7PJYHN2	99AHT4	EU	

June Canyon Celeron Kit Ordering Codes – NUC7CJYHN

Product Code	MM#	AC Cord (C5)	Processor
BOXNUC7CJYHN	99AHRV	None	Intel® Celeron J4005
BOXNUC7CJYHN1	99AHRW	US	
BOXNUC7CJYHN2	99AHRX	EU	
BOXNUC7CJYHN3	99AHRZ	UK	
BOXNUC7CJYHN4	99AHT0	AU	
BOXNUC7CJYHN5	99AHT1	IN	

(Without analog audio codec / line-out jack & digital mics)

All products available at [Disti](#)

Intel® NUC M15 Laptop Kit

Premium Performance for the Channel

EVO Branded Laptops

Intel® Core™ i7 and i5 processors

11th Gen with X^e Graphics Architecture

CNC Anodized Aluminum Chassis (14.9mm, 1.65kg)

Thunderbolt™ 4 Technology (USB4.0, power port)

All day battery life for productivity, media consumption, mobile creators and casual gaming

Adaptive Usages:

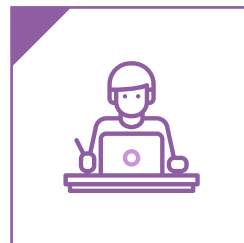
- Wake on Approach
- Walk Away Lock,
- No Lock on Presence

Intel® 2-year warranty



**Varies by product*

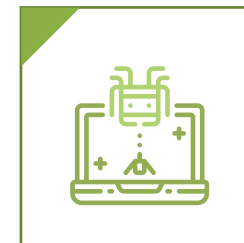
Target Usage Scenarios



Productivity



Content Creation



Casual Gaming

[Back to table of Contents](#)

Intel® NUC M15 Laptop Kit



11th Generation Intel® Core™ i7-1165G7
2.8 GHz – 4.7 GHz Turbo, 4 core, 8 thread, 12MB Cache, 28W
Intel® Iris® X^e Graphics, 400 MHz – 1300 MHz



11th Generation Intel® Core™ i5-1135G7
2.4 GHz – 4.2 GHz Turbo, 4 core, 8 thread, 8MB Cache, 28W
Intel® Iris® X^e Graphics, 400 MHz – 1300 MHz



- 15.6" CNC Anodized Aluminum Chassis in Midnight Black or Shadow Gray
- Narrow Bezel IPS 16:9 ratio, FHD 60Hz touch and non-touch options
- Dual channel 8GB or 16GB LPDDR4x 4266MHz
- 1 M.2 22x80 slot for PCIe x4 Gen4 NVMe
- 2 Thunderbolt™ 4 / USB 4 Type-C ports with DisplayPort 1.4b Connectivity
- Full Size HDMI 2.0b port
- Intel® Wi-Fi 6 AX201 + Bluetooth v5.1
- 2 USB 3.2 Gen2 Type-A ports
- 3.5mm stereo headset jack
- Intel® HD Premium Audio
- HD IR Camera with support for Windows* Hello
- Kensington NanoSaver Lock
- Silent Membrane Backlit Keyboard
- Light Bar with support for Alexa personal voice assistant
- Glass Click Pad with Microsoft* Precision Drivers, disable/enable LED indicator
- 73Whr Battery with fast charging support
- 355 mm x 230 mm x 14.9 mm, <1.65kg
- L7 SKUs – requires storage and OS
- EVO Branded L10 SKUs – requires LOEM branded customization
- Compact 65W USB-C Power Adapter with geo-specific C5 AC cords
- Two-year Warranty (One-year Battery Warranty)



Available SKUs



Intel® NUC M15 Laptop Kit L7 SKUs

"Bishop County"

[Back to Roadmap](#)

Product Code	MM#	Availability at Disti	CPU	Display	Memory	Color	Keyboard Layout	Power Cord (C5)	Regulatory
BBC710BCU7B01	99A6JX	WW22'21	Intel® Core™ i7-1165G7	1080p + Touch	16GB	Midnight Black	US English	US	Argentina, Australia, Austria, Belgium, Bulgaria, Canada, Chile, China, Croatia, Cyprus, Czech Republic, Denmark, Estonia, Finland, France, Germany, Greece, Hungary, Indonesia, Ireland, Italy, Japan, Latvia, Lithuania, Luxembourg, Malaysia, Malta Mexico, Netherlands, New Zealand, Norway, Pakistan, Philippines, Poland, Portugal, Romania, Singapore, Slovakia, Slovenia, South Africa, South Korea, Spain, Sweden, Switzerland, Taiwan, Thailand, Turkey, UK, US
BBC710ECU7B01	99A6JZ	Available				Shadow Gray			
BBC710BCU7B06	99A6KH	On Demand				Midnight Black			
BBC710ECU7B06	99A6KV	WW21'21				Shadow Gray			
BBC710BCK7B03	99A6K4	WW26'21				Midnight Black	UK English	UK	
BBC710ECK7B03	99A6K5	WW21'21				Shadow Gray			
BBC710BCF7B02	99A93X	On Demand				Midnight Black	French	EU	
BBC710BCG7B02	99A93Z	WW24'21				Midnight Black	German		
BBC710BCI7B02	99A940	On Demand				Midnight Black	Italian		

Intel® NUC M15 Laptop Kit L7 SKUs

Product Code	MM#	Availability at Disti	CPU	Display	Memory	Color	Keyboard Layout	Power Cord (C5)	Regulatory
BBC510BCU7A01	99A6HN	WW26'21	Intel® Core™ i5-1135G7	1080p + Touch	8GB	Midnight Black	US English	US	Argentina, Australia, Austria, Belgium, Bulgaria, Canada, Chile, China, Croatia, Cyprus, Czech Republic, Denmark, Estonia, Finland, France, Germany, Greece, Hungary, Indonesia, Ireland, Italy, Japan, Latvia, Lithuania, Luxembourg, Malaysia, Malta Mexico, Netherlands, New Zealand, Norway, Pakistan, Philippines, Poland, Portugal, Romania, Singapore, Slovakia, Slovenia, South Africa, South Korea, Spain, Sweden, Switzerland, Taiwan, Thailand, Turkey, UK, US
BBC510ECU7A01	99A6HK	Available				Shadow Gray			
BBC510BCU7A06	99A6JJ	WW26'21				Midnight Black		CN	
BBC510ECU7A06	99A6JK	WW25'21				Shadow Gray			
BBC510BCK7A03	99A6JD	WW26'21				Midnight Black	UK English	UK	
BBC510ECK7A03	99A6JF	WW25'21				Shadow Gray			
BBC510BCF7A02	99A91Z	On Demand				Midnight Black	French	EU	
BBC510BCG7A02	99A93G	WW27'21				Midnight Black	German		
BBC510BCI7A02	99A93J	On Demand				Midnight Black	Italian		
BBC510BCN7A02	99A93N	On Demand				Midnight Black	Nordic		
BBC510BCS7A02	99A93P	On Demand				Midnight Black	Spanish		

Intel® NUC M15 Laptop Kit L7 SKUs

Product Code	MM#	Availability at Disti	CPU	Display	Memory	Color	Keyboard Layout	Power Cord (C5)	Regulatory
BBC510BAU7A01	99A6GN	Q3'21	Intel® Core™ i5-1135G7	1080p	8GB	Midnight Black	US English	US	Argentina, Australia, Austria, Belgium, Bulgaria, Canada, Chile, China, Croatia, Cyprus, Czech Republic, Denmark, Estonia, Finland, France, Germany, Greece, Hungary, Indonesia, Ireland, Italy, Japan, Latvia, Lithuania, Luxembourg, Malaysia, Malta Mexico, Netherlands, New Zealand, Norway, Pakistan, Philippines, Poland, Portugal, Romania, Singapore, Slovakia, Slovenia, South Africa, South Korea, Spain, Sweden, Switzerland, Taiwan, Thailand, Turkey, UK, US
BBC510EAU7A01	99A6GP	Q3'21				Shadow Gray			
BBC510BAU7A06	99A6HC	Q3'21				Midnight Black			
BBC510EAU7A06	99A6HD	Q3'21				Shadow Gray			
BBC510BAK7A03	99A6H7	Q3'21				Midnight Black	UK English	UK	
BBC510EAK7A03	99A6H8	Q3'21				Shadow Gray			
BBC510ECG7A02	99AGW5	Q3'21						German	

Intel® NUC M15 Laptop Kit L10 EVO SKUs

"Bishop County"

[Back to Roadmap](#)

Product Code	MM #	Availability at Disti	CPU	Display	Memory	Color	Storage	OS	Keyboard Layout	Power Cord (C5)	Regulatory
BBC710ECJXBC9	99AK4T	WW26'21	Intel® Core™ i7-1165G7	1080p + Touch	16GB	Shadow Gray	512GB Gen4 SSD	Win10 Home	Japan	Japan	Argentina, Australia, Austria, Belgium, Bulgaria, Canada, Chile, China, Croatia, Cyprus, Czech Republic, Denmark, Estonia, Finland, France, Germany, Greece, Hungary, Indonesia, Ireland, Italy, Japan, Latvia, Lithuania, Luxembourg, Malaysia, Malta Mexico, Netherlands, New Zealand, Norway, Pakistan, Philippines, Poland, Portugal, Romania, Singapore, Slovakia, Slovenia, South Africa, South Korea, Spain, Sweden, Switzerland, Taiwan, Thailand, Turkey, UK, US
BBC710BCUXBC1	99AD9L	On Demand				Midnight Black			US English	US	
BBC710ECUXBC1	99AD9M	Q3'21				Shadow Gray					
BBC510EAUXBC1	99AK4V	WW26'21	Intel® Core™ i5-1135G7	1080p	16GB	Shadow Gray	512GB Gen4 SSD	Win10 Home	US English	US	
BBC510EAUXBC6	99ADZ1	Q3'21				Shadow Gray					





AC Cords

[Back to table of Contents](#)

AC Cords For Intel® NUC

- All new NUC families shipping Q3'2017 and later include a corded power-brick AC adapter, instead of the wall-wart adapter with replaceable plugs. Each NUC SKU will either include one SKU-specific AC cord, or no AC cord (just the power adapter). Refer to the Ordering Codes table shown in the one-pagers for details on each SKU, and the cord type required (C5 or C13).
- NUC SKUs with US, EU, UK, AU, and CN cords included are immediately available, at order quantity in multiples of 5
- For orders that require IN, AR, BR, JP/TW, and ZA AC cords, the no-cord SKU must be ordered along with the appropriate AC cord below. As with NUC SKUs, the AC cord SKUs also come in 5-packs.
- To determine the AC cord type required, please refer to the product's one-pager in this roadmap deck

AC Cord Ordering Codes – C5 Type 		
Description	Product Code	MM#
Bulk AC cord - 0.6m / 2ft, C5 connector, India plug, single pack	AC06C05IN	962133
Bulk AC cord - 0.6m / 2ft, C5 connector, China plug, single pack	AC06C05CN	962138
Bulk AC cord - 0.6m / 2ft, C5 connector, Argentina plug, single pack	AC06C05AR	962140
Bulk AC cord - 0.6m / 2ft, C5 connector, Japan/Taiwan plug, single pack	AC06C05JP	962141
Bulk AC cord - 0.6m / 2ft, C5 connector, Brazil plug, single pack	AC06C05BR	962142
Bulk AC cord - 0.6m / 2ft, C5 connector, South Africa plug, single pack	AC06C05ZA	962143
Bulk AC cord - 0.6m / 2ft, C5 connector, Switzerland plug, single pack	AC06C05CH	962982
Bulk AC cord - 0.6m / 2ft, C5 connector, USA plug, single pack	AC06C05US	979493
Bulk AC cord - 0.6m / 2ft, C5 connector, EU plug, single pack	AC06C05EU	979494
Bulk AC cord - 0.6m / 2ft, C5 connector, UK plug, single pack	AC06C05UK	979495
Bulk AC cord - 0.6m / 2ft, C5 connector, AU plug, single pack	AC06C05AU	979504

AC Cord Ordering Codes – C13 Type 		
Description	Product Code	MM#
Bulk AC cord - 0.6m / 2ft, C13 connector, India plug, single pack	AC06C13IN	976384
Bulk AC cord - 0.6m / 2ft, C13 connector, China plug, single pack	AC06C13CN	976385
Bulk AC cord - 0.6m / 2ft, C13 connector, Argentina plug, single pack	AC06C13AR	976386
Bulk AC cord - 0.6m / 2ft, C13 connector, Japan/Taiwan plug, single pack	AC06C13JP	976387
Bulk AC cord - 0.6m / 2ft, C13 connector, Brazil plug, single pack	AC06C13BR	976388
Bulk AC cord - 0.6m / 2ft, C13 connector, South Africa plug, single pack	AC06C13ZA	976389
Bulk AC cord - 0.6m / 2ft, C13 connector, Switzerland plug, single pack	AC06C13CH	976390
Bulk AC cord - 0.6m / 2ft, C13 connector, USA plug, single pack	AC06C13US	979516
Bulk AC cord - 0.6m / 2ft, C13 connector, EU plug, single pack	AC06C13EU	979535
Bulk AC cord - 0.6m / 2ft, C13 connector, UK plug, single pack	AC06C13UK	979536
Bulk AC cord - 0.6m / 2ft, C13 connector, AU plug, single pack	AC06C13AU	979537

[Back to table of Contents](#)

intel®

Resources

- **Technical Product Specification**
<https://www.intel.com/content/www/us/en/support/articles/000005545/intel-nuc.html>
- **Elements-U Product Specs**
<https://www.intel.com/content/www/us/en/support/articles/000055720/intel-nuc/intel-nuc-elements.html>
- **Regulatory**
<https://www.intel.com/content/www/us/en/support/articles/000006130/intel-nuc.html>
- **Supported OS for Intel® NUCs**
<https://www.intel.com/content/www/us/en/support/articles/000005628/mini-pcs.html>
- **Mechanical Drawings for Intel® NUCs**
<https://www.intel.com/content/www/us/en/support/articles/000006820/mini-pcs.html>
- **Technical Product Spec's documents for Intel® NUCs**
<https://www.intel.com/content/www/us/en/support/articles/000005545/mini-pcs.html>
- **Access and download the latest drivers and BIOS for our Intel® NUCs**
<https://downloadcenter.intel.com/>
- **How to contact Intel Customer Support**
<https://www.intel.com/content/www/us/en/support/contact-support.html>
- **Intel® NUC Compatible chassis and products**
<https://www.intel.com/content/www/us/en/products/docs/boards-kits/nuc/nuc-ecosystem-enabling-technical-spec.html>

[Back to table of Contents](#)