

Collection of specification grade downlights for architectural applications. Excellent build quality with features for the most demanding professional applications. Available in four sizes 3", 4", 5", 6" aperture with generous light outputs and excellent chromatic performance. Professional optics available with directional distribution.

Luminaire characteristic:

Power input: 9.5 or 13W
Lumens: 585 to 870lm (for 3000K, 80CRI)
Luminaire efficacy: Up to 67lm/W

Source: COB LED module (LM-80 tested)
2700K : 90CRI
3000K : 80CRI, 90CRI,
3500K : 80CRI, 90CRI,
4000K : 80CRI.

Lumen maintenance: LM79 tested,
90% of initial lumens at 50 000 hours (L90),
80% of initial lumens at 100 000 hours (L80).

Optic: **Adjustable:** Deep recessed reflector available with narrow flood or flood optic. Optical assembly hot aiming adjustment: 30° tilt and 359°pan.

Material: Body: Die-cast aluminum optical assembly
Reflector: Metalized polycarbonate
Baffle: Painted polycarbonate

Mounting: Remodel, New construction with plaster frame,
New construction with housing for insulated ceiling and Chicago plenum
See page 4 for details.

Electrical: Integral high efficiency power supply rated at 50 000 hours, 120V or 277V.

Dimming: Compatible with 0-10V or leading and trailing edge dimming (Both dimmable down to 15%)

Finish: Powder coated body and baffle. See page 5 for details.

Weight: 2.15lbs (0.98kg).

Warranty: 5 year limited warranty.

Rating: IP54

Certification: cULus listed for Damp location.

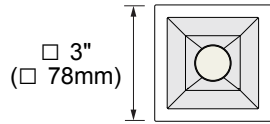


MODEL

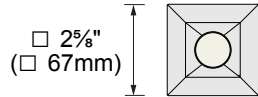
TRIM



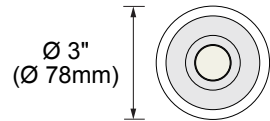
ADJUSTABLE



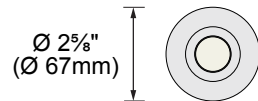
TRIMLESS



TRIM

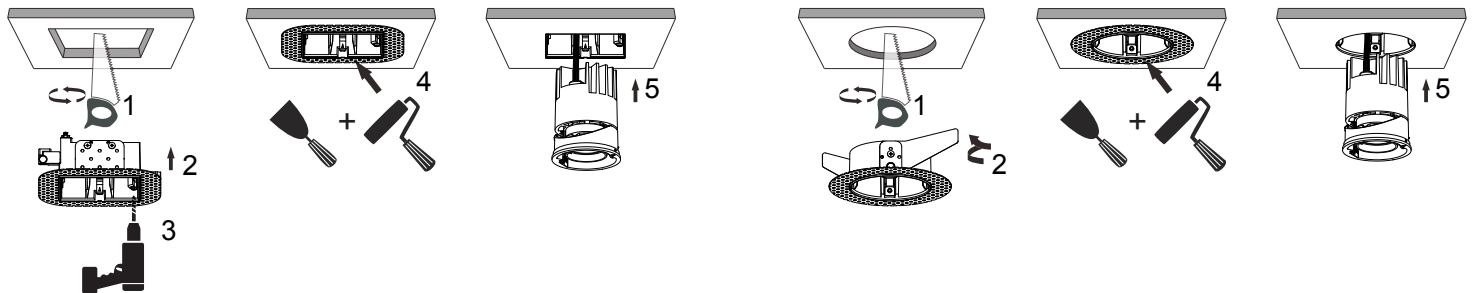


TRIMLESS



TRIMLESS FRAME KIT

Trimless frame kit (included with trimless model), to be fastened to the gypsum board. The assembly is then finished by plastering, sanding and painting. Install the luminaire inside the opening once painting is completed.



PHOTOMETRIC DATA

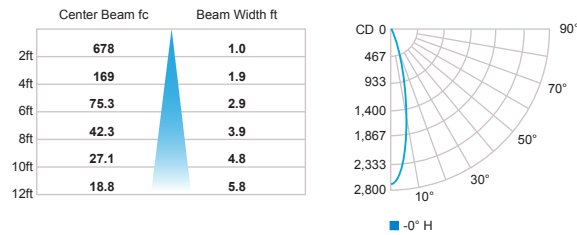
Visit sistemalux.com for complete photometric data.

ADJUSTABLE

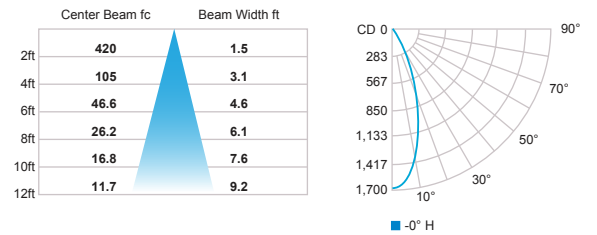


CCT (K)	CRI	OUTPUT	LOAD (W)	OPTIC	LUMENS (lm)	EFFICACY (lm / w)	MAX CANDELA (cd)
3000K	80	BO	9.5W	Narrow Flood (25°)	585	61	1 975
				Flood (42°)	635	66	1 220
		HO	13W	Narrow Flood (25°)	800	61	2 710
				Flood (42°)	870	67	1 675

Narrow Flood 25° 13W (3000K, 80 CRI)



Flood 42° 13W (3000K, 80 CRI)



***USE MULTIPLIER TABLE FOR OTHER CCT AND CRI OUTPUT DATA**

CCT options	2700K	3000K	3000K	3500K	3500K	4000K
CRI options	90CRI	80CRI	90CRI	80CRI	90CRI	80CRI
Multiplier	0.77	1	0.81	1.01	0.83	1.02

INSTALLATION

Remodel (RF)

For new or existing ceiling. Suitable for non-insulated ceiling like sheetrock or paneling. Trimless frame kit can be shipped separately.

Minimum ceiling clearance:

Trim: 5/8" (140mm)

Trimless: 8" (203mm)

Ceiling thickness: 1/8" - 1" (3 - 27mm)

Total weight: 2.15lbs (0.98kg)

Cut-out:

Round: Trim: Ø 2 3/4" (Ø 71mm)

Trimless: Ø 2 7/8" (Ø 73mm)

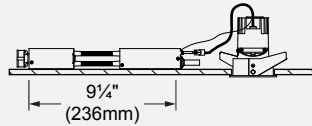
Square: Trim: 2 5/8" x 2 5/8" (69 x 69mm)

Trimless: 2 3/4" x 2 3/4" (71 x 71mm)

Trimless frame kit codes:

Round: TK-LOG3RL-RF

Square: TK-LOG3SL-RF



New construction with plaster frame (NC)

Plaster frame with hanger bars system to be installed during rough-in phase. Suitable for non-insulated new construction ceiling assemblies, like sheetrock, acoustic tiles, or paneling. Housing and trim can be shipped separately.

Minimum ceiling clearance:

Trim: 5/8" (140mm)

Trimless: 8" (203mm)

Ceiling thickness: 1/8" - 1" (3 - 27mm)

Total weight: 3.35lbs (1.52kg)

Cut-out:

Round: Trim: Ø 2 3/4" (Ø 71mm)

Trimless: Ø 2 7/8" (Ø 73mm)

Square: Trim: 2 5/8" x 2 5/8" (69 x 69mm)

Trimless: 2 3/4" x 2 3/4" (71 x 71mm)

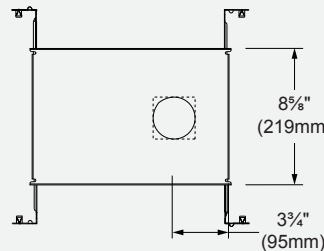
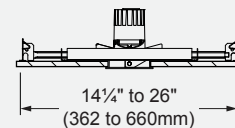
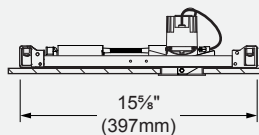
Plaster frame codes:

Round: Trim: BN-LOG3RT-NC

Trimless: BN-LOG3RL-NC

Square: Trim: BN-LOG3ST-NC

Trimless: BN-LOG3SL-NC



New construction with housing suitable for insulated ceiling (IC) or Chicago plenum (CP)

Housing with hanger bars system for new construction installations. Suitable for insulated ceiling or Chicago Plenum applications. Housing and trim can be shipped separately.

Minimum ceiling clearance: 7 1/8" (181mm)

Ceiling thickness: 1/8" - 1" (3 - 27mm)

Total weight: 10.25lbs (4.65kg)

Cut-out:

Round: Trim: Ø 2 3/4" (Ø 71mm)

Trimless: Ø 2 7/8" (Ø 73mm)

Square: Trim: 2 5/8" x 2 5/8" (69 x 69mm)

Trimless: 2 3/4" x 2 3/4" (71 x 71mm)

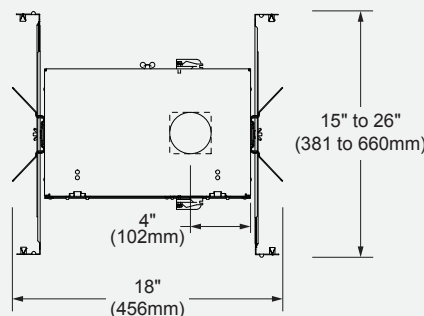
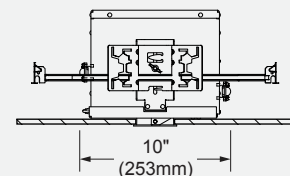
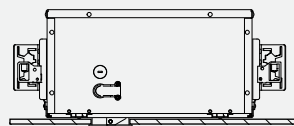
Housing codes:

Round: Trim: BI-LOG3RT-IC/CP-XXX

Trimless: BI-LOG3RL-IC/CP-XXX

Square: Trim: BI-LOG3ST-IC/CP-XXX

Trimless: BI-LOG3SL-IC/CP-XXX



ACCESSORY
(TO BE ORDERED SEPARATELY)

9000-02 - Black hex cell louver



ORDERING INFO

LOG3

- -
FIXTURE

- LOG3

- -
HOUSING



MODEL

R - Round

S - Square

MOUNTING

T - Trim

L - Trimless

INSTALLATION

RF - Remodeling
(No housing)

NC - new construction
plaster frame

IC - Insulated ceiling
housing

CP - Chicago plenum
housing

OUTPUT

B - Base output (9.5W)

H - High output (13W)

LED

927 - 2700K, 90 CRI

830 - 3000K, 80 CRI

835 - 3500K, 80 CRI

840 - 4000K, 80 CRI⁽¹⁾

930 - 3000K, 90 CRI

935 - 3500K, 90 CRI

OPTIC

ANF - Adjustable, Narrow Flood (25°)

AFL - Adjustable, Flood (42°)

VOLTAGE

120 - 120V

277 - 277V

FINISH

White Trim

01 - White/White

21 - White/Black

41 - White/Gold⁽²⁾

13 - White/Matte
anodized⁽²⁾

Gray Trim

20 - Gray/White

22 - Gray/Black

40 - Gray/Gold⁽²⁾

03 - Gray/Matte
anodized⁽²⁾

Black Trim

23 - Black/White

02 - Black/Black

42 - Black/Gold⁽²⁾

33 - Black/Matte
anodized⁽²⁾

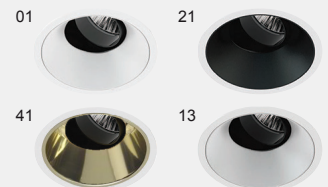
Trimless

01 - White

02 - Black

43 - Gold⁽²⁾

51 - Matte anodized⁽²⁾



DIMMING

LTE - Leading and Trailing edge
dimming (120V only) (down to 15%)⁽³⁾⁽⁴⁾

D10 - 0-10V (down to 15%)⁽³⁾⁽⁴⁾

⁽¹⁾ LED options may require a longer lead time than standard. Please contact factory for details.

⁽²⁾ Finish options may require a longer lead time than standard. Please contact factory for details.

⁽³⁾ 15% dimming options: For leading and trailing edge and 0-10V (LTE and D10), the dimming levels will vary depending the dimmer used and the number of luminaires on the line.

⁽⁴⁾ Daisy chain connections only possible with LTE dimming option.