

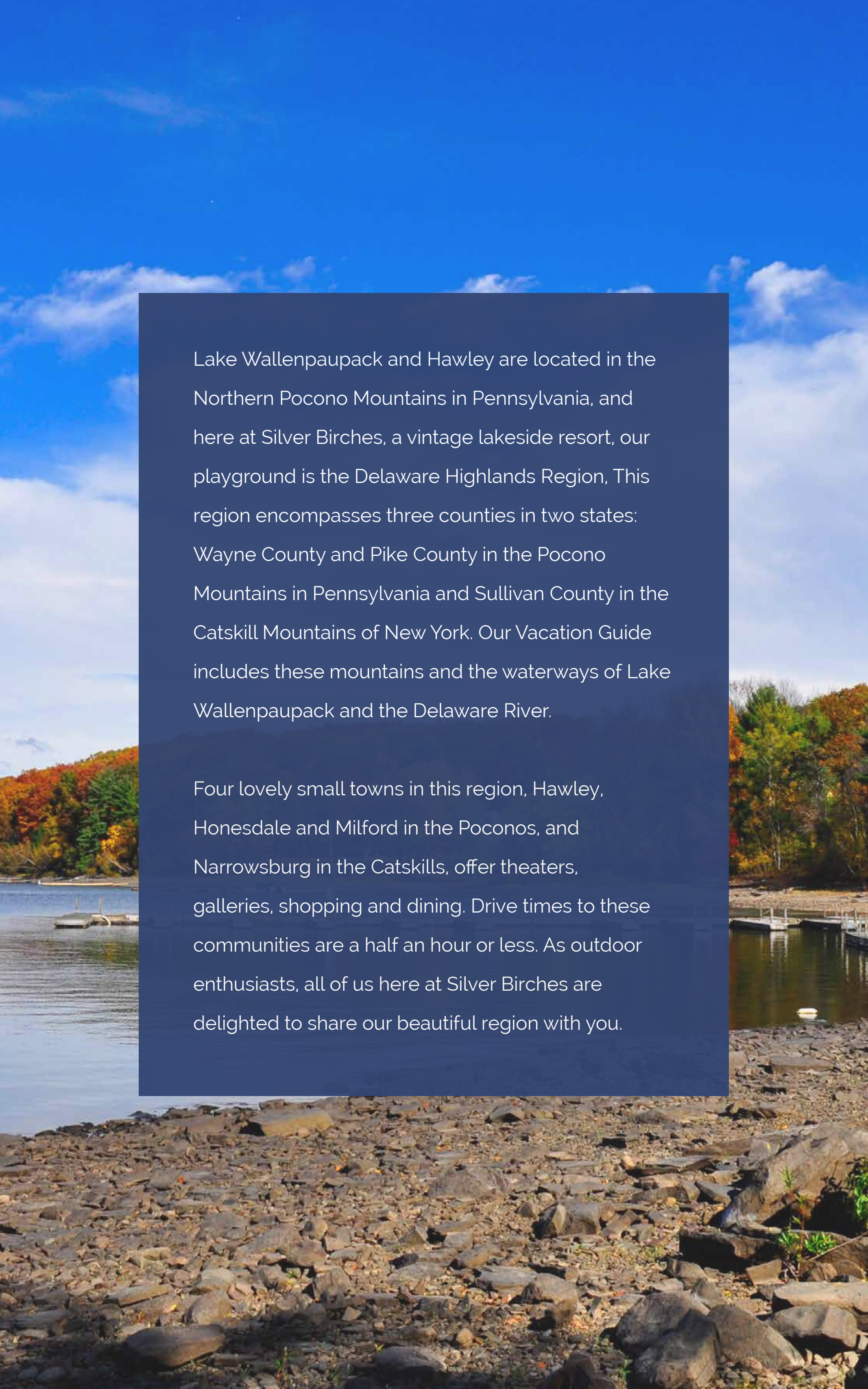


SILVER BIRCHES

YOUR VACATION GUIDE TO THE
NORTHERN POCONO REGION



*Encompassing the Upper Delaware and Lake
Region of the Pocono Mountains and the Southern
Tier Catskill Mountains of New York*



Lake Wallenpaupack and Hawley are located in the Northern Pocono Mountains in Pennsylvania, and here at Silver Birches, a vintage lakeside resort, our playground is the Delaware Highlands Region. This region encompasses three counties in two states: Wayne County and Pike County in the Pocono Mountains in Pennsylvania and Sullivan County in the Catskill Mountains of New York. Our Vacation Guide includes these mountains and the waterways of Lake Wallenpaupack and the Delaware River.

Four lovely small towns in this region, Hawley, Honesdale and Milford in the Poconos, and Narrowsburg in the Catskills, offer theaters, galleries, shopping and dining. Drive times to these communities are a half an hour or less. As outdoor enthusiasts, all of us here at Silver Birches are delighted to share our beautiful region with you.



TABLE OF CONTENTS

| | |
|-------------------------------------|----|
| Introduction | 2 |
| Outdoor Activities | 4 |
| Four Historic Small Towns | 13 |
| Hawley, PA. | 13 |
| Honesdale, PA | 18 |
| Milford, PA | 22 |
| Narrowsburg, NY. | 26 |
| Annual Festivals & Events | 29 |
| Family. | 30 |
| Accommodations | 32 |
| Amenities | 34 |
| Conclusion. | 19 |





OUTDOOR ACTIVITIES

Join the “roof rack” crowd. Bring your backpacks, bikes, kayaks and canoes, or rent them here. Whether you’re visiting in spring, summer, fall or winter, all of the seasons have something great to offer the outdoor enthusiast.

HIKING, BIKING, RAFTING AND KAYAKING

Waterfalls of Pike County Tour

A combination of driving and hiking to explore the waterfalls of Pike County. Bring your walking sticks or borrow ours and enjoy nature’s scenic beauty.

<http://goo.gl/u6hw7C>

Hawley River Walk Trail

Take a loop around Bingham Park and enjoy the scenic overlook of the Lackawaxen River.



Lake Wallenpaupack Creek Trail

Travel time – 5-minute drive.

Scenic trail adjacent to Lake Wallenpaupack that meanders along the original creek bed. Stop and tour the PPL Wallenpaupack Environmental Learning Center

<http://www.pplpreserves.com>

Shuman Point

Travel time – 5 minute drive.

Natural Area Hiking Trail – A 3-mile hiking trail on the 250-acre PPL Nature Preserve on Lake Wallenpaupack.

<http://goo.gl/somIZs>

Dorflinger-Suydam Wildlife Sanctuary

Travel time – 15 minutes to White Mills.

Five miles of trails through the wildlife sanctuary. Bring binoculars – great for birding.

<http://goo.gl/9lVbm5>

Promised Land State Park

Travel time – 16-minute drive.

3,000 acres of natural forest and lakes in the beautiful state park. The park has 50 miles of hiking trails.

<http://www.dcnr.state.pa.us>

Lacawac Sanctuary

Travel time – 27-minute drive.

A natural glacier lake. Five hiking trails for wildlife spotting, bird watching, photography and more.

<http://www.lacawac.org>

George W. Childs Park

Travel time – 40-minute drive.

Part of the Delaware Water Gap National Recreation Area and the National Trail

System. Features cascading waterfalls and 67,000 acres of mountain ridge, forest and floodplain on both sides of the Delaware River.

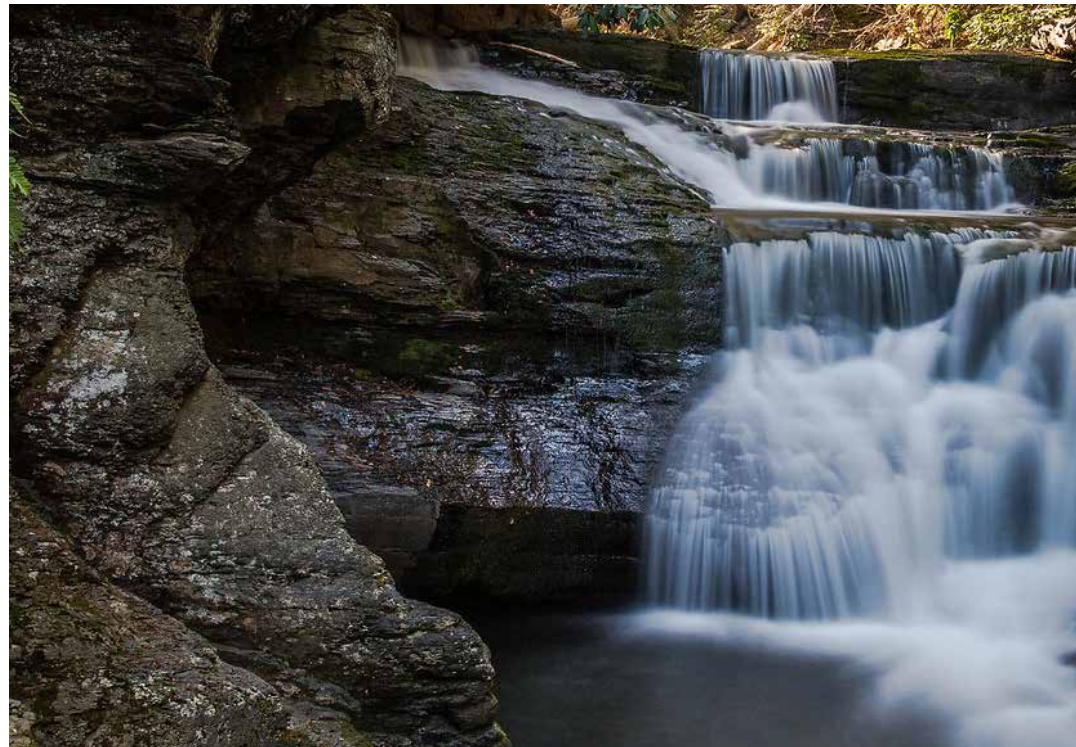
<http://goo.gl/hRCI91>

Dingmans Ferry Waterfalls

Travel time - 45 minutes.

Beautiful hiking and water falls. A short hike to the bottom of the falls and a great 200-step walk to the top of the falls for a great view.

<http://goo.gl/xjCjKE>



Prompton State Park

Travel time - 25-minute drive from the resort.

1,500 acres of land and a 290-acre lake with 26 miles of trails operated the U.S.

Army Corp of Engineers. The trails are a mix of rocky paths and smooth forest floor.

<http://www.friendsofprompton.com/>



GEOCACHING

If you are into Geocaching, be sure to bring your GPS to enjoy the experiences available in the Delaware Highlands Region.



DOWNHILL SKIING

Our local mountain, Ski Big Bear, is great for families and beginners. Check out the ski conditions and lift ticket pricing at www.Ski-bigbear.com. In addition, larger ski areas such as Elk Mountain, Montage's Sno Mountain, Camelback, and Shawnee are all within about an hour's drive.



BIKING

Shared Bikes

Hawley has a shared bike program. Settlers Inn and Ledges Hotel each have bikes to sign out. These bikes are great to explore the town and for short pedals nearby. View more about the suggested route at VisitHawleyPa.com.

Pocono Bike Tours

Casual and experienced riders alike will love our scenic Pocono biking tours through the beautiful Pocono Mountains.

Lackawaxen River Ride

<http://goo.gl/9esShJ>

Wayne County Scenic Ride

<http://goo.gl/eq5rAz>

NEWE (Northeast Wilderness Experience)

NEWE, located on Main Street in Honesdale, offers bikes and other equipment for rent.

<http://newwildernessexperience.com/>



HORSEBACK RIDING

Triple W Riding Stables

Travel time – 15 minute drive.

Horseback riding on a 200-acre peaceful, secluded mountain top setting. Located at the highest point in the Lake Region area with spectacular scenery. Horse drawn sleigh rides in the winter are also offered.

www.triplewridingstable.net



GOLF

The Country Club at Woodloch Springs

Travel time – 25-minute drive.

Nationally recognized by *GOLF Magazine* as "One of the finest courses in America" and rated 4.5 stars by *Golf Digest's* Best Places to Play. An 18-hole championship golf course with 6,579 yards of fern-carpeted forest, lush wetlands and broad upland meadows.

<http://goo.gl/LvffLI>



There are public tennis courts in Palymra Township Park off Gumbletown Road, 10 minutes from the resort. Bring your gear!



ZIP LINE ADVENTURES

Kittatiny Canoes

Travel time – 30-minute drive.

This adrenaline-filled ride will thrill the zip out of you! Whether you are zipping to take in the view, or for bragging rights, this ride is sure to excite you.

<http://kittatinny.com>

The Adventure Center at Skytop Lodge

Travel time – 30-minute drive.

A 3-hour Treetop Adventure Course is just over 3,000 feet in its entirety with varying obstacles including, but not limited to, elevated bridgeways from one tree platform to the next, logs hanging from ropes to walk across, ladders, a cargo net, and a total of seven different zip lines.

<http://goo.gl/KrlvX2>



SWIMMING

The Lakefront at Silver Birches

Guests enjoy 700 feet of lakefront access.

Swim and fish from the dock on Lake Wallenpaupack.

Woodloch Springs Sports Complex

Travel time – 25-minute drive.

A complete recreation facility that includes a fitness center, wave-less indoor pool, and a variety of programs and services that meets everyone's fitness and aquatic needs.

<http://www.woodlochsportscomplex.com>

Palymra Township Public Beach

Located on Lake Wallenpaupack by the Visitor's Center.

Open Memorial weekend through Labor Day weekend 11 a.m. – 7 p.m. (Weather permitting.) Lifeguards, concession stand, bathrooms, picnic tables and grills available.

Promised Land State Park Beach

Travel time – 20-minute drive.

A public beach to spend the day in the lake, rent a self-propelled water craft, or if the kids are with you, enjoy the playground.



BOATING

Lake Wallenpaupack is steps from your front door and is a boater's paradise. The lake is 52 miles in circumference, 13 miles long and is fabulous for any boating activity from a quiet water kayak or paddle board to a powerboat or sail. Visit the waterfront activity center.

Delaware River

The Upper Delaware Region is great for boating. Liveries line both sides of the river. Spend a day on the river enjoying a quiet float or be more adventurous and take on the Class 2 and 3 rapids. Kittatinny offers rivers adventures for every level.

<http://www.kittatinny.com>

Landers River Trips is another good option.

<http://www.landerrivertrips.com/>



PARASAILING

Imagine soaring high above Lake Wallenpaupack in a specially designed parachute while being towed behind a high-tech speed boat. Enjoy breathtaking panoramic views of the Pocono Mountains area as you are gently lifted from the boat's flight deck up into the sky. Monday – Friday. Located at Light House Harbor Marina.

<http://www.poconoactionsports.com>



FISHING

Lake Wallenpaupack is THE place to fish for striped bass - the elusive stripers! The Big Lake is also a cool spot for you to set up your tip-ups for ice fishing in the winter months.

Casting and fly fishing are great on the Lackawaxen River. The backyard of our sister property, The Settlers Inn, is bordered by the Lackawaxen River, a haven for anglers. Put on your hip boots or waders or fish along the banks of the river. Enjoy the natural sand beach and easy access to the river. The Lackawaxen is stocked each spring with trout.

Wallenpaupack Sports Shop

Get fishing tips as well as bait and fishing licenses, which are required in Pennsylvania.

<https://goo.gl/NBRsBb>

John Appert

Experience a blissful day of fishing with local guide John Appert. He has more than 50 years of fishing experience and offers fly fishing guide services and lessons on the Lackawaxen.

<https://www.johnappert.com>



FOUR HISTORIC SMALL TOWNS

HAWLEY, PENNSYLVANIA

The center of commerce for the Lake Region of the Pocono Mountains, this little town offers many activities for visitors. It has more than 17 acres of open space at the confluence of three rivers. VisitHawleyPa.com will give you an updated calendar of news and events along with a complete listing of shop and eateries.

Lake Wallenpaupack, affectionately known as The Big Lake, is just 2 miles east of town. Be sure to stop in at the Visitors Center and the PPL Environmental Learning Center to find out more about the history of the lake and collect maps and brochures.

The historic Main Street has recently been restored and was voted one of 20 small towns in America to receive a facelift from the Benjamin Moore Paint Co.



SHOPPING

The Potting Shed Gift Shop

Located at one of our sister properties, The Settlers Inn, the Potting Shed has seasonal merchandise that is carefully curated to offer merchandise of the highest quality craftsmanship and environmental friendliness. Items in the shop include jewelry, pottery, and goods for the home and garden.

<http://thesettlersinn.com/gifts/>

The Hawley Silk Mill

Originally known as The Bellemonte Silk Mill, the building is the largest bluestone building in the world and the gateway to Hawley on the southern end of town. In 2009, the property underwent a multi-million-dollar renovation and now houses a retail complex, fitness center, college, performing arts center and many other independent businesses.

<http://www.hawleysilkmill.com/>



Antique shops are abundant in Hawley including *Miss Elly's Antiques & Such*, *The Antique Emporium*, *Jukebox Classic & Vintage Slot Machines*, *Doodles & Such* and *Oma's Attic* - located at the Hawley Silk Mill - just to name a few.

Looking Glass Gallery

Home to artist Juan Espino and several other talented artists he represents.

<http://goo.gl/zSWNTn>



The Mill Market

The source for all locally produced provisions from produce to specialty cheeses, charcuterie, baked goods and much more. Take home some of our local flavors!

<http://goo.gl/NqU1yd>

Gentle Arts

A full-service knit shop at the Hawley Silk Mill offering lessons, yarn and all things "knitting."

<http://www.thegentlearts.com>

Art on the Edge

The inspiration of Heather Hoffman, this is a multifaceted gallery including 10 pop-up shops featuring local designers and artisans.

<http://goo.gl/YBWxhE>

Lake Region Fitness

Locally owned workout facility offering classes in yoga, spin, and Zumba, along with state-of-the-art machines for working out.

<http://goo.gl/LzC3Xc>

Penny Lane Candies

Step back in time to a penny candy store.

<http://www.pennylane.com>



DINING

The Dock

Located on Lake Wallenpaupack at Silver Birches
Dock your boat and dine indoors or on the deck at this casual eatery with a beautiful view of the lake. Select from an eclectic menu of American standards. Open seven days a week for lunch, dinner and cocktails.

<http://goo.gl/VbTXCT>

Restaurant at the Settlers Inn

A farm-to-table restaurant offering innovative regional Pennsylvania cuisine prepared with the freshest and healthiest ingredients. Open for breakfast and dinner daily and brunch on weekends.

<http://goo.gl/C85fN6>

The Chestnut Tavern at the Settlers Inn

Full bar with a fantastic selection of wine, beer and liquor as well as a menu of classic dishes with a fresh twist.

Ledges Hotel and Glass-wine. bar.

kitchen

Adjacent to the Hawley Silk Mill campus and features an "All American Wine and Beer List" with an emphasis on American Spirits. Enjoy snacks and small plates in the panoramic dining room or on the deck overlooking the gorge. Open Wednesday through Sunday from 4:30 p.m. until.

<http://goo.gl/gDkdsI>

Cocoon Coffee House

Located in the historic building that once housed the silk cocoons for the mill is Cocoon Coffee House, the local gathering spot for many townies and students.

<http://goo.gl/D2KWSt>



ARTS, CULTURE & HISTORY

Lock House 31

Lock House 31, circa 1820, is on the Old Delaware and Hudson Canal, just 1 mile west of Hawley. There you can learn about the history of the canal, the first \$1 million enterprise in the United States. Stroll along the towpath and imagine the canal boats and mules.

<http://goo.gl/HbCoVZ>

The Dorflinger-Suydam Wildlife Sanctuary

A few miles west on Hawley on the way to Honesdale is the hamlet of White Mills. The Dorflinger-Suydam Wildlife Sanctuary, Dorflinger Glass Museum and The Wildflower Theatre are all located on this 600-acre former home and property of Christian Dorflinger who was a famous glass cutter for many years in the 1800s. The firm cut glass for the Lincoln White House and many fine examples are in the museum there.

<http://dorflinger.org/>

The Wildflower Theatre

The Wildflower is an outdoor concert venue that has Saturday evening performances on the lawn in July and August. The property also offers 5 miles of hiking trails.

<http://www.dorflinger.org/>

Harmony Presents

Harmony Presents is the venue for a great concert on Saturday nights. This small theatre is in the "boiler room" of the Silk Mill and hosts great entertainment in a club-like atmosphere. It features an outdoor terrace overlooking the beautiful Paupack River Gorge and waterfalls.

<http://harmoniypresents.com/>

Ritz Company Playhouse

Hawley is also home to the Ritz Company Playhouse. This community art deco style theatre has been offering performances during the summer for more than 40 years.

<http://www.ritzplayhouse.com/>



HONESDALE, PENNSYLVANIA

Travel west of Hawley on Route 6 for 9 miles and you will arrive in Honesdale, the birthplace of the American railroad and county seat of Wayne County. The Delaware and Hudson Canal started here and ended in Kingston, NY. The canal was the first \$1 million enterprise in the United States and helped create the industrial revolution transporting coal to New York City. Learn more about the rich history of this area at the Wayne County Historic Society on Main Street.

Greater Honesdale Partnership

<http://www.visithonesdalepa.com/>



SHOPPING

Wallflower

This main street store features clothing and gifts — everything from the practical to whimsical.

<http://goo.gl/OMHrVL>

Maude Alley

Two buildings on Main Street in Honesdale with a narrow alley between them make up Maude Alley. Inside, you'll find a collection of shops including [Alley Whey Cheese Shoppe](#) – cheese specialty shop, [Moody Road Studios](#) – books and limited fine art, [Milkweed](#) – women's clothing, [The Joy of Art](#) – fine art restoration and framing, [The Wayne County Arts Alliance](#) – fine art gallery. [Art's for Him and Her Too](#) – Home town store featuring men's and ladies' clothing.



DINING

Branko's Patisserie du Jour

Offering French pastries, fresh fruit tarts, and their signature Parisian chocolate dome as well as other baked specialties.

<http://goo.gl/hIUIkr>

Fiesta on Main

Authentic Mexican cuisine cooked fresh.

<https://goo.gl/2isJAN>

Dyberry Forks

"From farms to the fork." Located on Main Street.

<http://www.dyberryforks939.com/>

BÃ & Me

Located on Main Street in Maud Alley, the restaurant is a chain of casual restaurants dedicated to serving fresh and healthy traditional Vietnamese food.

<http://www.baandme.com/>



ARTS, CULTURE & HISTORY

The Cooperage Project

This small town has great offerings for arts and entertainment. The Cooperage offers performances, children's programs and a farmers market.

<http://thecooperageproject.org/>

Willow River Gallery

Displays feature art and artisans from around the area.

<http://www.willowrivergallery.com/>

Wayne County Historical Society and Museum

Created to collect and preserve historical records of persons, places and events in Wayne County.

<http://www.waynehistorypa.org/>

The Stourbridge Line

Scenic Train Rides of the Northern Poconos. A must for families vacationing in the area.

<http://www.thestourbridgeline.net/>



MILFORD, PENNSYLVANIA

Travel east of Hawley on Route 6 for 25 miles and you will arrive in Milford. This village is on the National Register of Historic Places. The U.S. Department of Forestry was born here at Grey Towers, home of Gifford Pinchot. Milford is on the eastern edge of the Pocono Plateau and there are many scenic waterfalls within a short drive. Broad Street is great for shopping and dining.



SHOPPING

The lovely *Forest Hall* is the anchor building in town and houses some delightful shops such as *Up River Home*, *The Artery*, and several antique shops. There are many more shops and galleries in Milford. Find out more at www.discoverpike.org

On Route 6, halfway between Hawley and Milford is *Alice's Wonderland*. This "outfitter" has been here for generations. It is the perfect place to find everything you need for your outdoor adventures from sun glasses to hiking boots to life jackets and kayaks.



DINING

The Patisserie

The Patisserie is a scrumptious bakery in town where you can have a lazy lunch on the porch and relax.

<http://goo.gl/QZqIsu>

Bar Louis at The Hotel Fauchere

Bar Louis is a favorite spot for lunch or dinner.

<http://www.hotelfauchere.com/>



ARTS, CULTURE & HISTORY

The Columns

Home of Pike County Historic Society and Museum.

<http://pikehistorical.org/>

The Milford Theatre

Home of Kindred Spirits Arts Program

<http://kindredspiritsarts.org> and the Black Bear Festival. Special music nights are also offered.

<http://www.milfordtheatre.com>

Grey Towers

Touring the Mansion and Grounds of Gray Towers is highly recommended. Be sure to see the outside "serving pool" where Mrs. Pinchot entertained her guests around a floating table.

<http://www.greytowers.or>

Roebling Bridge and Zane Grey Museum

Between Milford and Hawley there are several noteworthy excursions. The tiny village of Lackawaxen is home to the Roebling Bridge and Zane Grey Museum.

The bridge was originally an aqueduct that allowed canal boats traveling the D&H corridor to cross the river. The Zane Grey Museum was the home of the famous author and several of his novels were written here. Grey was an avid fisherman and loved to fly fish in the Lackawaxen River at the confluence of the Delaware.

<http://goo.gl/5HBe7u>

Peter's Valley Gallery

Experience fine American crafts. You'll find jewelry, books, apparel and art on display.

www.petersvalleygallery.org/

NOTE: The towns of Milford, Hawley, and Honesdale are all on U.S. Route 6, a National Scenic Byway. <http://goo.gl/kXHh7I>



Photo Credit Wikipedia: Evangeline.a

NARROWSBURG, NEW YORK

Travel west from Hawley on Route 6 for 5.3 miles then PA-652 E for 10.6 miles and you will arrive in the quaint hamlet of Narrowsburg. Located in the western part of the Town of Tusten in Sullivan County, NY, Narrowsburg is one of several riverside towns that dot the Upper Delaware region. Find a bench in the center of town and enjoy the scenic overlook.



SHOPPING

Tom's Treasures and Furniture

Located on Main Street, offers antiques and collectibles.

The Nest

A small-town department store with unique offerings.

<http://www.nest-store.com/>

River Gallery

A shop featuring local artists, antiques and home gifts for the home.

<http://www.rivergalleryny.com/>



DINING

The Heron Restaurant

A wonderful café with a deck for dining that overlooks the Delaware River.

<http://www.theheronrestaurant.com>

Girard's River Grille

Located on the corner of Main Street.

Serving Italian specialties and more.

<http://gerardsrivergrill.com/>



ARTS, CULTURE & HISTORY

The Tusten Theatre

An art-deco style theatre built in the 1930s. A favorite Catskills venue for concerts, opera, theatre performances, as well as film.

<http://goo.gl/Qrnm47>

Fort Delaware

This museum of colonial history is located on the outskirts of town.

<http://fortdelawaremuseum.org/>

Bethel Woods Center for the Arts

Bethel Woods Center is a modern venue not far out of town on the former Woodstock site. This not-for-profit cultural center offers performances and festivals as well as arts and education, and it houses the Woodstock Museum.

<http://www.bethelwoodscenter.org/>



ANNUAL FESTIVALS AND EVENTS

| | | | |
|---------------|---------------------------------|------------------|-----------------------------------------------------------|
| April | Hawley Earth Fest | Hawley | http://goo.gl/QK6Dej |
| May-August | Blues, Brews & Barbeques | Ledges Hotel | http://goo.gl/7Q3Jjx |
| June | Roots & Rhythm | Honesdale | http://goo.gl/W3ludg |
| June | Milford Music Fest | Milford | http://goo.gl/gvH8ac |
| June | Arts & Crafts Fair | Hawley | http://goo.gl/br2iF6 |
| July | Fourth of July Parade | Hawley | http://goo.gl/qui1g1s |
| July | Fireworks on Lake Wallenpaupack | Hawley | http://goo.gl/GAnpvi |
| July | Narrowsburg River Fest | Narrowsburg | http://goo.gl/aSZB9t |
| July | Wayne County Fair | Honesdale | http://goo.gl/msVJAI |
| July & August | Jazz on the Deck | The Settlers Inn | http://goo.gl/BbDHyo |
| August | Wayne/Pike Antique Show | Hawley | |
| August | Wally Lake Fest | Hawley | http://goo.gl/Vv4tIH |
| August | Greene Dreher Sterling Fair | Newfoundland | http://goo.gl/mUVXJo |
| August | Festival of Wood at Grey Towers | Milford | http://goo.gl/RhUZMa |
| October | Hawley Harvest Hoedown | Hawley | http://goo.gl/qui1g1s |
| October | Black Bear Film Festival | Milford | http://goo.gl/omk1Pv |
| December | Winterfest | Hawley | http://goo.gl/56DJQi |



FAMILY

CASUAL EATERIES

The Dock – Route 507

<http://goo.gl/Eo9dTM>

The Boat House Restaurant – Route 507

<http://the-boathouse-restaurant/>

Gresham's Chop House – Route 6

<http://www.greshamschophouse.com>



FUN FOR FAMILIES

Wallenpaupack Bowling Center

www.wallenpaupackbowlingcenter.com/

Costa's Family Fun Park

Laser tag, miniature golf, driving range, batting cages, go carts, water park and kids playground.

<http://www.costasfamilyfunpark.com/>

Cinema 6 Movie Theatre

www.moviesatcinema6.com

Claws & Paws Animal Park

www.clawsnpaws.com

The Stourbridge Line

www.thestourbridgeline.net

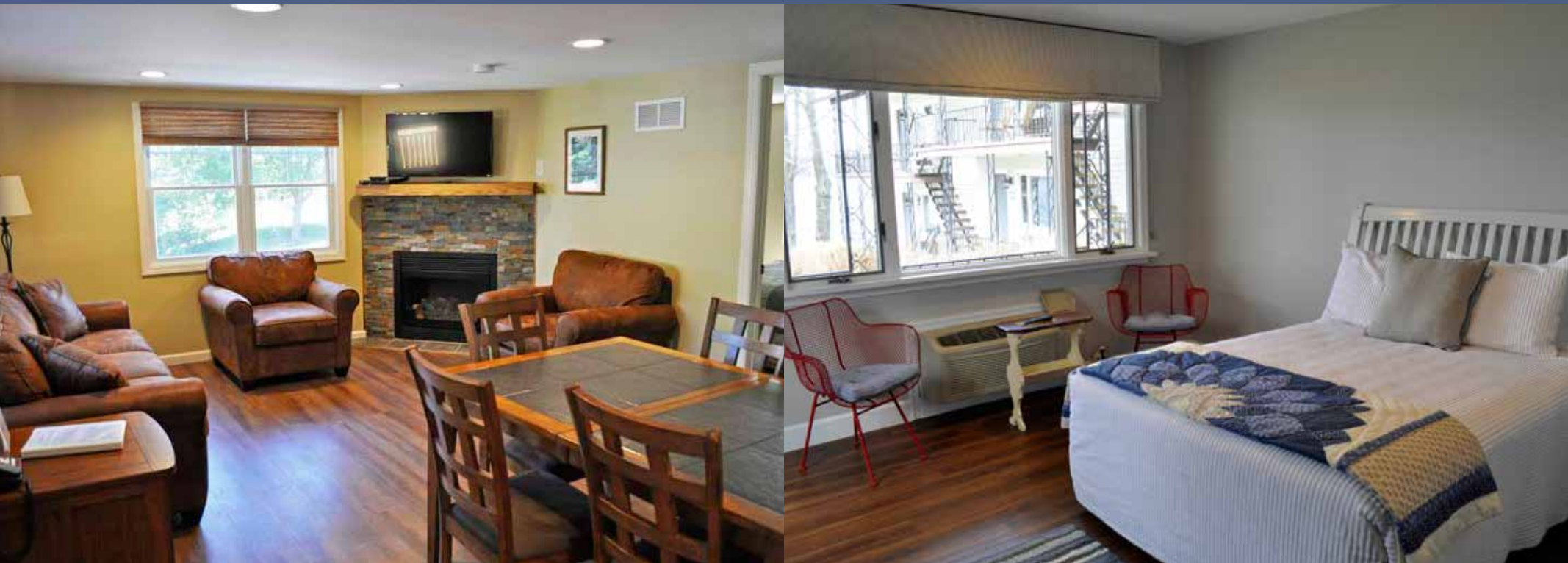
Bingham Park

Located in Hawley, Bingham Park is a great spot for the family featuring a kids' playground, basketball and tennis courts, and a skateboard park and ball fields.



ACCOMMODATIONS

Silver Birches is a vintage lakeside resort on the shores of Lake Wallenpaupack. Originally, the property was a farm complete with a barn and out-buildings. Now, it is a place for romantic retreats as well as family vacations and reunions. The large complex boasts 700 feet of lakefront with the following accommodations:



The Cottages

Five cozy two-bedroom cottages. The living rooms all have fireplaces and fully equipped kitchens. All have lake views.

The Lakeshore

Eight mid-century vintage rooms, all with picture windows, dating to 1966. Fully renovated in 2016. All have private balconies and great views. One is fully handicapped accessible.

The Sunset View

Five deluxe romantic rooms and suites. All have whirlpool tubs and fireplaces. First floor suites have private decks.

The Bunkhouse

Four two-bedroom family units complete with master bedrooms and bunk room. All have private porches.

The Inn

The original Singer Farmhouse with 4 suites and 3 rooms with lake views. Some open directly onto the front porch. All have king beds.

The Houses on Singer Lane

- Landing
- Retreat
- The Big House

On Singer Lane, you'll find three houses. The Landing and The Retreat each have three bedrooms with private baths, fully equipped kitchens, and living rooms with a fireplace. They also have lake views and laundry facilities.

The Big House, which is lakefront, sleeps 10. It has a large family kitchen, dining room, living room and den, a large wrap-around deck and a laundry room. It's just steps from the lake.



AMENITIES

Our resort accommodations include fine linens, Keurig coffee makers, flat-screen TVs with cable, phones, and complimentary Wi-Fi. Outdoor amenities include a seasonal pool, shuffleboard, lawn games, fire pits and lakefront activities. Our onsite restaurant offers lunch and dinner options. The onsite coffee house offers breakfast and fresh baked goods, locally roasted coffee and a large assortment of teas.

Silver Birches guests have access to Lake Region Fitness, a state-of-the-art fitness facility at no charge. Discounted access to Woodloch Springs Health Club is also available if you'd like to utilize the Jacuzzi, sauna, fitness room and indoor swimming pool.

If you'd like to add on a special in-room extra to enhance your stay, such as a massage, cheese platter, champagne, or other signature items, our staff will be delighted to assist you.

SILVER BIRCHES AWAITS

Set amongst the scenic beauty of the lake region, Silver Birches Resort offers lovely accommodations and the best casual dining in the region. Our knowledgeable staff will take care of you and make recommendations for the best places to visit and the most entertaining activities in the area. Whether you want to spend all of your time outdoors or take it easy, Silver Birches is the ideal destination. Experience the beautiful sunsets and join in the toast for our daily celebration. Slip away to the beach or find your Adirondack chair. Jump in and come up for air. We are waiting to assist you with booking; please call us at 1.570.226.4388 or visit our website at <http://www.silverbirchesresortpa.com>.

We hope to see you soon.