

VFM-F40 Motorised Flat Panel Floor Stand

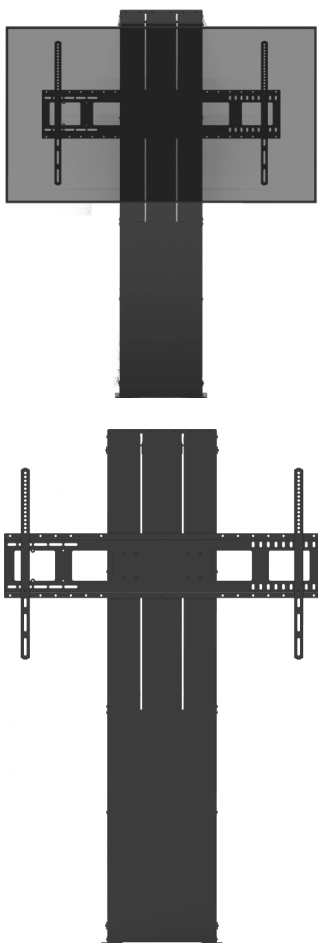
1 EU SAP: 5062731 US SAP: 70017406

visionaudiovisual.com/vfm-f40

Lifts up to 130 kg (286 lb)
700 mm (27.6") height adjustment
Fast linear-drive motor
Comes 95% assembled
Sturdy fixed column design

Vision's Flat-Panel Mount VFM-F40 is a heavy-duty motorised floorstand for large interactive or non-interactive displays. It is super-rigid, powerful, and comes almost completely assembled. Just take it out of the box, install the feet and flat-panel mount, and fix it to the wall. There is no easier floorstand to install.

Vision's floorstands transmit the load of the heavy display safely to the floor. This stand is optimised for use in meeting spaces where a high quality fit and finish is essential.



SWL 130kg (286 lbs)

The F40 uses heavy-gauge components to take the weight, and a powerful linear drive pushes up (and pulls down) with 1500 Newtons of force, moving at a relatively quick 19 mm (0.8") per second.

Regular Freight

This product comes in two boxes: a VFM-F40FRAME which contains the almost completely assembled column. And a VFM-W8X6 wall mount, which fixes to the column. We did this to keep the weight of the carton under 30 kg / 66 lb so normal courier services can be used.

700 mm / 27.5" Motorised Height Adjustment

The central column is a fixed 1.7 metres (5.6 ft) tall, with the moving assembly moving up and down the column 700 mm / 27.5".

Extremely Tight Tolerances

The moving mechanism uses a roller-slide design with four quality bearings which glide up polished rails. The tolerances of bearings on rail result in zero unwanted movement.

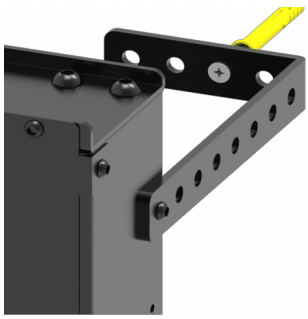
Wireless Control

A remote control is included with simple up and down functions. Users can use the holder, or a magnet sticker to fix the remote to the side of the column out of sight.

Four Wall Brackets

Brackets fix the column to the wall at a variety of heights. They can secure the column flush against the wall or standing off up to 140 mm (5.5"). The column can be anchored high up on the wall, giving installers plenty of options. *Note: A minimum of two wall brackets is adequate as long as they are fixed to load bearing structure. Four is better than two.*

VISION



Safety Stop

A safety stop is triggered when the display lowers onto hard furnishings. Note soft items may fail to trigger the stop. Care should be taken whenever moving the display down.

Feet or Fixed

Adjustable feet are included to make it easy to adjust level, or swap those out for included brackets which fix the column to the floor.

Cable Management

Generous cable entry holes on the sides make routing cables quick and easy. There are holes in the rear for cable ties.



Hide Mess

Plenty of space behind the front cover to hide cables, media players, mini PCs, and power distribution boards.

VESA 800 x 600

This product includes Vision's heavy-duty [VFM-W8X6](#) wall mount which fits most large-format flat panels from 47-90". Vision's larger [VFM-W10X6](#) wall bracket can also fix to this column, or the smaller [VFM-W6X4](#).

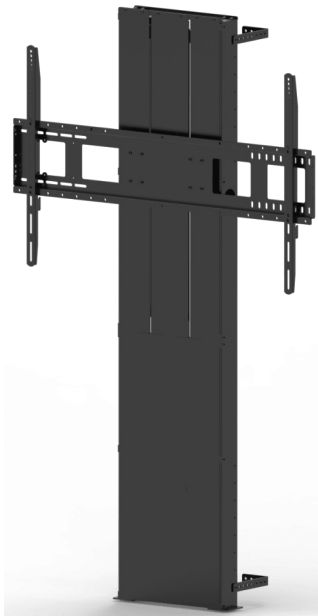
Optional Side Shelf

An adjustable outrigger supports a flip-up laptop shelf. It can be positioned at the optimum height to the side of the display. *Note: Due into stock late 2019*



Optional Video Conference Shelf

This shelf fixes in the centre above or below the display. It accommodates cameras such as Logitech's Rally, and also Logitech's Meetup, Yamaha's VVC-1000, or Barco's Clickshare CSE-200 base stations. With VESA100 holes on the vertical section, product's like iPad enclosures can be fixed above or below the display.



MANUAL

Vision Floorstands range overview apr 2019

EN PDF 535.05 KB

files.visionaudiovisual.com/products/VFM-F40/manuals/Vision_Floorstands_range_overview_apr_2019.pdf

CAD

Cad

ZIP 890.55 KB

<files.visionaudiovisual.com/products/VFM-F40/cad/VFM-F40.zip>

IMAGE

Product Images

ZIP 50.21 MB

<files.visionaudiovisual.com/products/VFM-F40/images/VFM-F40.zip>

SPECIFICATIONS

WHAT YOU GET

1 x VFM-F40FRAME 1 x VFM-W8X6

PRODUCT DIMENSIONS

VFM-F40FRAME: See CAD VFM-W8X6: 845 x 635 x 36 mm / 33.3" x 25.0" x 1.4" (width x height x depth)

PACKAGED DIMENSIONS

VFM-F40FRAME: 1400 x 380 x 140 mm / 55.12" x 14.96" x 5.51" VFM-W8X6: 880 x 235 x 40 mm / 34.6" x 9.3" x 1.6"

PRODUCT WEIGHT

VFM-F40FRAME: 26 kg / 57 lbs VFM-W8X6: 5.8 kg / 12.9 lbs Total: 31.8 kg / 70.1 lb

PACKAGED WEIGHT

VFM-F40FRAME: 29.9 kg / 66 lbs VFM-W8X6: 6.8 kg / 15.0 lbs Total: 36.7 kg / 81 lb

SAFE WORKING LOAD

130 kg / 286 lbs

CONSTRUCTION MATERIAL

Steel

COLOUR

Powercoated Matt Black

VESA SIZES

800 x 600 mm 800 x 500 mm 800 x 400 mm 600 x 600 mm 600 x 500 mm 600 x 400 mm 500 x 500 mm 500 x 400 mm 400 x 600 mm 400 x 400 mm 400 x 300 mm 400 x 200 mm 300 x 400 mm 300 x 300 mm

MOTOR TYPE

Linear-drive

SAFETY STOP

Yes

FORCE

1500 N (both up and down)

MOVEMENT SPEED

19 mm / 0.8" per second

HEIGHT ADJUSTMENT RANGE

700 mm / 27.6"

ACCESSORIES INCLUDED

WITH VFM-F40FRAME 1 x EU Figure-8 C7 Power cable 2.5 m (8 ft) long 1 x UK Figure-8 C7 Power cable 2.5 m (8 ft) long 1 x AU Figure-8 C7 Power cable 2.5 m (8 ft) long 1 x US Figure-8 C7 Power cable 2.5 m (8 ft) long 1 x IR Remote Control (A23 12v battery included) 4 x Wall Brackets WITH VFM-W8X6 4 x M5 16 mm screw 4 x M6 16 mm screw 4 x M6 25 mm screw 4 x M8 16 mm screw 4 x M8 35 mm screw 2 x M8 45 mm screw

POWER SUPPLY

110-230V Integrated Power Supply

WARRANTY

Lifetime return-to-base UK Only: 5 years onsite

COMPLIANCES

RoHS, WEEE, FCC, CE/EMC, CE/LVD, RCM/DOC, RCM/POC ADA Compliant (Americans with Disability Act)

ORDER PART CODE

VFM-F40 [EU SAP: 5062731 / US SAP: 70017406]

OPTIONAL ADD-ONS

VFM-WSS Side Shelf [EU SAP: 4857149 / US SAP: 13557610] VFM-WVC Video Conferencing Shelf [EU SAP: 5048878 / US SAP: 13557673]

The logo for VISION, featuring the word "VISION" in a bold, white, sans-serif font. The letter "O" is stylized with a play button icon inside it. The logo is set against a dark green background that is part of a larger abstract graphic at the bottom of the page.