

peerless-AV[®]

Dedicated Solutions
for  LG Displays



peerless-AV[®]

Dedicated Solutions for LG Displays

Peerless-AV's solutions are designed exclusively for LG displays - from dvLED, OLED and more. With over 80 years of audio visual manufacturing experience, Peerless-AV[®] is a name you can trust. From well-designed, quality built products, unmatched customer service, and outstanding high volume custom project capabilities, Peerless-AV is dedicated to providing top-of-the-line product support and service.



Peerless-AV is the only major mount manufacturer to have **never had a recall**.



Products are tested by Peerless-AV to **UL 2442 standard** to provide a trusted level of safety.

Need assistance on selecting the right products for your install?

Contact a dedicated Peerless-AV sales representative:

 info@peerless-av.com

 630.375.5100





SEAMLESS

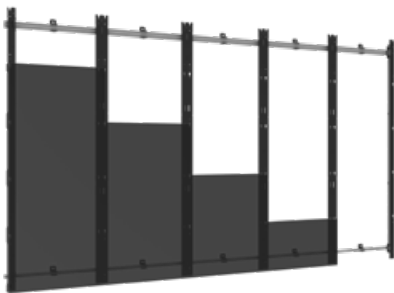
Direct View LED Mounting Systems

Peerless-AV's SEAMLESS Mounting Systems offer slim, space-saving & aesthetically appealing designs that can be adapted to support all of your dvLED video wall needs.



LG dvLED Ultimate Business Display Size		Model Number	SEAMLESS Series	Compatible Mounting System	Trim Kit Accessory	
2K FullHD 81"	Ultimate Business Display	LSAB-F081C	KITTED	DS-LEDLSAA-3X3	DS-LEDTK-6VX5S	
2K FullHD 108"	Ultimate Business Display	LSAA-F108C		DS-LEDLSAA-4X4	DS-LEDTK-8VX5S	
2K FullHD 136"	Ultimate Business Display	LSCB-F136C		DS-LEDLSCB-5X5	DS-LEDTK-10VX6S	
2K FullHD 163"	Ultimate Business Display	LSCB-F163C		DS-LEDLSCB-6X6	DS-LEDTK-12VX8S	
2K FullHD 217"	Ultimate Business Display	LSCB-F217C		DS-LEDLSCB-8X8	DS-LEDTK-16VX10S	
dual2K Ultra Stretch 147" (2 x 81")	Ultimate Business Display	LSAB-G147C		DS-LEDLSAA-6X3	DS-LEDTK-12VX5S	
dual2K Ultra Stretch 196" (2 x 108")	Ultimate Business Display	LSAA-G196C		DS-LEDLSAA-8X4	DS-LEDTK-16VX5S	
dual2K Ultra Stretch 245" (2 x 136")	Ultimate Business Display	LSCB-G245C		DS-LEDLSCB-10X5	DS-LEDTK-20VX6S	
dual2K Ultra Stretch 294" (2 x 163")	Ultimate Business Display	LSCB-G294C		DS-LEDLSCB-12X6	DS-LEDTK-24VX8S	
dual2K Ultra Stretch 393" (2 x 217")	Ultimate Business Display	LSCB-G393C		DS-LEDLSCB-16X8	DS-LEDTK-32VX10S	
4K UltraHD 163"	Ultimate Business Display	LSAB-U163C		DS-LEDLSAA-6X6	DS-LEDTK-12VX8S	
4K UltraHD 217"	Ultimate Business Display	LSAA-U217C		DS-LEDLSAA-8X8	DS-LEDTK-16VX10S	
4K UltraHD 271"	Ultimate Business Display	LSCB-U271C		DS-LEDLSCB-10X10	DS-LEDTK-20VX12S	
4K UltraHD 325"	Ultimate Business Display	LSCB-U325C		DS-LEDLSCB-12X12	DS-LEDTK-24VX15S	
dual4K Ultra Stretch 294" (2 x 163")	Ultimate Business Display	LSAB-V294C		DS-LEDLSAA-12X6	DS-LEDTK-24VX8S	
dual4K Ultra Stretch 393" (2 x 217")	Ultimate Business Display	LSAA-V393C		BESPOKE	*	*
dual4K Ultra Stretch 490" (2 x 271")	Ultimate Business Display	LSCB-V490C			*	*
dual4K Ultra Stretch 589" (2 x 325")	Ultimate Business Display	LSCB-V589C			*	*
8K UltraHD 325"	Ultimate Business Display	LSAB-U325C			*	*
Indoor Scoreboard 230"	Ultimate Business Display	LSCA-H230C	Kitted + Bespoke	DS-LEDF	*	

*Contact a Peerless-AV® Sales Representative for more information.



KITTED

Flat dvLED Mounting Systems

DS-LEDLS Models



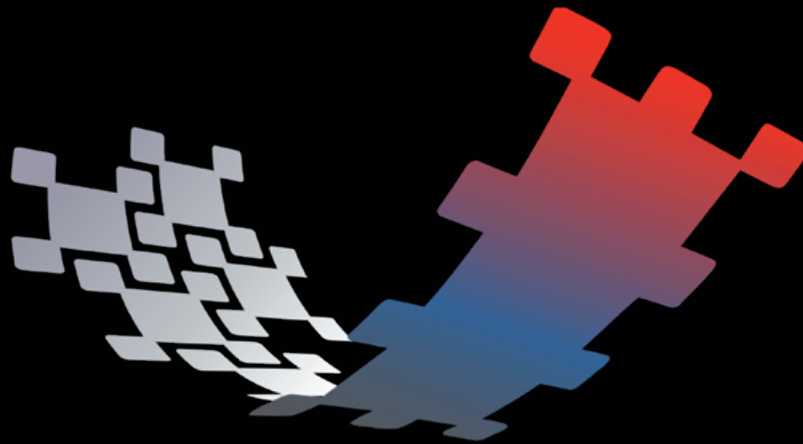
130" Fixed Wall Mount

DS-LEDFLAAF-3x3



130" Cart/Stand

DS-LEDCLAAF-3x3



SEAMLESS

BY

peerless-AV[®]

dvLED Video Wall Integration - From start to finish.

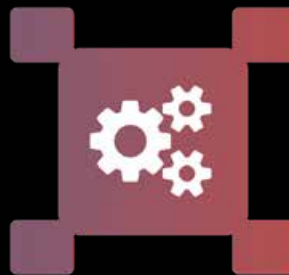
The Peerless-AV[®] SEAMLESS dvLED Solutions Team can solve even the most complex design & technology integration challenges to create an ideal solution for any unique application.



**EXPERT
ENGINEERING & DESIGN**



**CUSTOM
PROJECT MANAGERS**



**FULL INSTALLATION
SERVICES**



**SEAMLESS dvLED
MOUNTING SYSTEMS**

For more information, visit peerless-av.com/SEAMLESS



Full Service Video Wall Mounts

With features centered on ease of installation and maintenance, Peerless-AV's mounting solutions provide you the ideal platform to create the perfect video wall.



SMARTMOUNT.
Supreme Full Service
Video Wall Mount

DS-VW775



SMARTMOUNT.
Supreme Full Service Video Wall
Mount with Quick Release

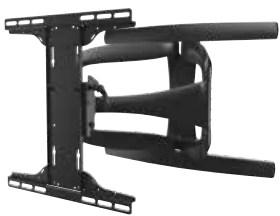
DS-VW775-QR



Hospitality TV Wall Mounts

Peerless-AV® is the brand standard for leading hotel chains and the most trusted mounting solution in the hotel industry.

LG OLED



DesignerSeries™

Universal
Ultra Slim
Articulating
Wall Mount

OSUA771PU

55" to 77" OLED Displays



Articulating
Wall Arm
with Set Top
Box Enclosure

HA746-STB

43" to 55"



Pull-Out Pivot
Wall Mount

HPF650

32" to 65"

Pairs perfectly with the
LG STB-5500 with the
optional ACC166 Set Top
Box Holder Accessory



Universal
Swing-Out
Wall Mount

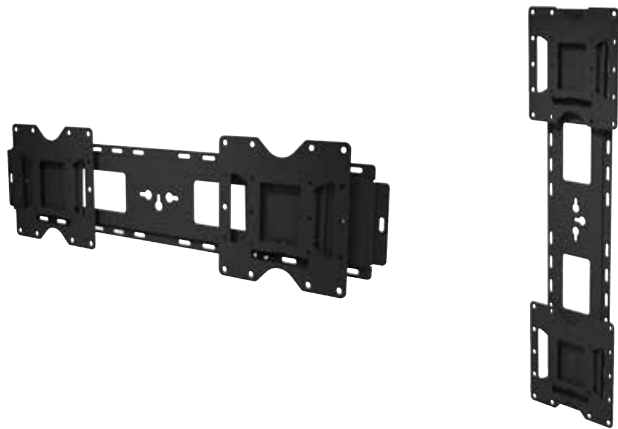
HPF665

55" to 75"



Ultra Stretch Signage Solutions

Ultra Stretch Flat Wall Mounts



LG-WMF86BH
(Landscape/Portrait)

86BH5C
(86")



SF650
(Landscape)

88BH7D
(88")



SFP680
(Portrait)

COMPATIBLE LG
ULTRA STRETCH
MODEL #:



Optimize your dynamic digital content with Peerless-AV's versatile solutions, exclusively for LG Ultra Stretch Signage displays. Ideal for a wide array of applications, including transportation terminals, retail stores, commercial offices, and more.

Ultra Stretch Portrait Kiosks



KIP586-4LG shown

One, two, three or four sided models available

KIP586-1LG, KIP586-2LG, KIP586-3LG, KIP586-4LG

86BH5C
(86")



KIP588-4LG shown

One, two, three or four sided models available

KIP588-1LG, KIP588-2LG, KIP588-3LG, KIP588-4LG

88BH7D
(88")



Motorized Mounting Solutions

Peerless-AV's line of SmartMount® Motorized Height Adjustable solutions are compatible with a wide range of LG Interactive Displays and are available as mobile or fixed mounting solutions. With the simple touch of a button, the interactive display height can be quickly and effortlessly adjusted to meet ADA requirements.



Motorized Height Adjustable Flat Panel Cart

SR598ML3



Motorized Height Adjustable Stand/Wall Mount

SS598ML3



Motorized Height Adjustable Tabletop Cart

SR598ML3T

COMPATIBLE LG
INTERACTIVE DISPLAY
MODEL #:

43TA3E, 49TA3E, 55TA3E, 55TC3D, 65TR3BF,
75TC3D, 86TR3E, 86TR3BF & 86TN3F

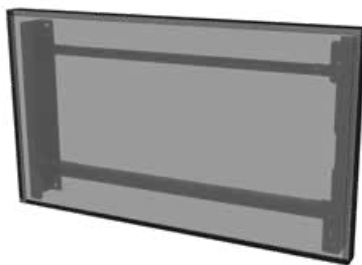
55TA3E, 55TC3D,
65TR3BF, 75TC3D

Outdoor Digital Signage Solutions



With a focus on functionality, durability, and aesthetics, Peerless-AV's outdoor digital signage solutions are designed to be modern, approachable, practical, and endure the rigors of outdoor use. Peerless-AV's all-weather rated solutions are ideal for sharing community information, travel, and weather details, as well as wayfinding, advertising, entertainment, and more.

Outdoor Flat Wall Mounts



Landscape model shown



Portrait model shown

EWL-49XE4F
(Landscape)

EWP-49XE4F
(Portrait)

EWL-55XE4F
(Landscape)

EWP-55XE4F
(Portrait)

COMPATIBLE LG
OUTDOOR DISPLAY
MODEL #:



49XE4F
(49")

55XE4F
(55")



For over 80 years, passion and innovation continue to drive Peerless-AV® forward. We proudly design and manufacture the highest quality products, including outdoor displays and TVs, complete integrated kiosks, video wall mounting systems, professional carts and stands, and more. Whether a full-scale global deployment or high volume custom project, Peerless-AV develops meaningful relationships and delivers world-class service. In partnership with Peerless-AV, you are trusting an award-winning team of experts who will support your business every step of the way.

For more information, visit peerless-av.com.

 peerless-av.com
 800-865-2112