

## LGS3 Range

# Managed Gigabit Switches Managed PoE+ Gigabit Switches

LINKSYS®

FOR BUSINESS



Designed for security and speed, Linksys Managed Gigabit Switches provide a business-class network you can grow on

## Network Expansion

Our managed switches include features for quickly expanding and growing your network. Multiple high-bandwidth trunks between switches enhance availability and redundancy. Spanning Tree Protocol (STP) and Storm Control features help control planned or inadvertent cable loops, so you can confidently build a mesh of switches and quickly expand your network to support your growing workforce.

## Network Security

Unauthorised access to the network and mission-critical data is a constant concern. Our managed switches help secure networks through port authentication, requiring clients to authenticate themselves before any data is passed. Advanced DHCP snooping and IP-MAC binding functions ensure network integrity and help prevent network attacks.

## Quality of Service (QoS)

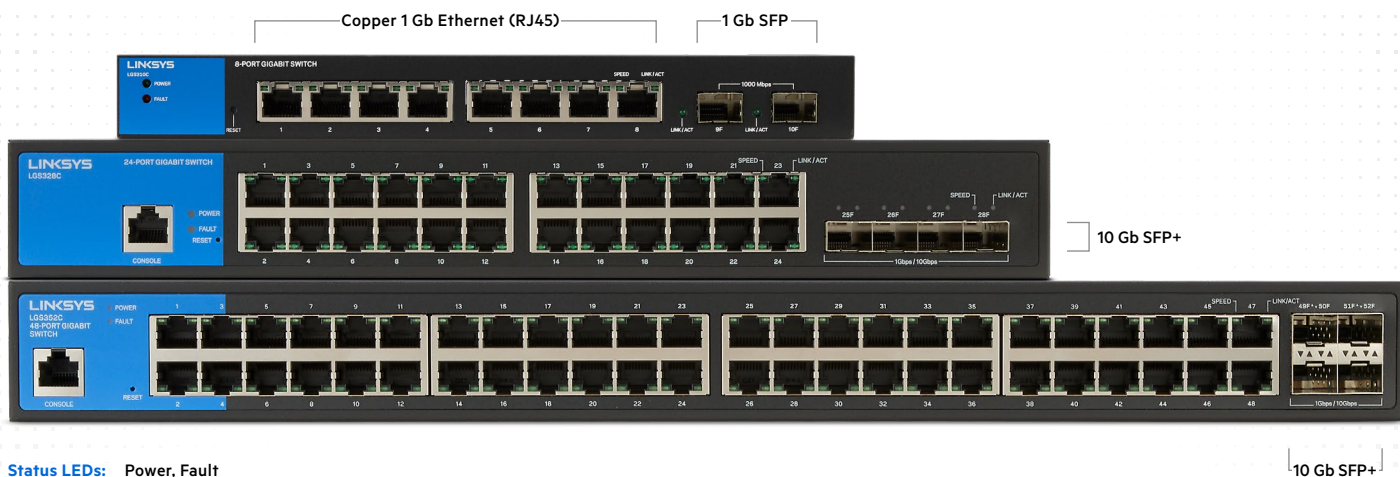
Numerous QoS features ensure that traffic is prioritized properly to deliver the best possible user experience for real-time applications like voice and video along with bandwidth-intensive graphic/video file uploads and downloads. IGMP snooping limits IP multicast traffic to the ports that requested it, enabling the rest of the network to operate at peak efficiency.

## Power over Ethernet Plus (PoE+)

Linksys managed switches support the latest 802.3at (PoE+) standards and provide up to double the power budget per Gigabit Ethernet port while offering 802.3af (PoE) backward-compatibility. Power over Ethernet reduces electrical wiring costs, simplifies installation, and supports network devices such as IP cameras and wireless access points in optimal indoor and outdoor locations.

## Key Features

- 8, 24 or 48 Gigabit Ethernet Ports.
- Dedicated SFP or SFP+ Uplink Ports.
- Advanced Network Security and QoS.
- Static Routing and IPv6 support.
- Ideal for surveillance cameras, access control, ProAV, projectors, access points, VoIP phones, and other demanding applications.
- Integrated Power over Ethernet Plus (Managed PoE+ Switches).



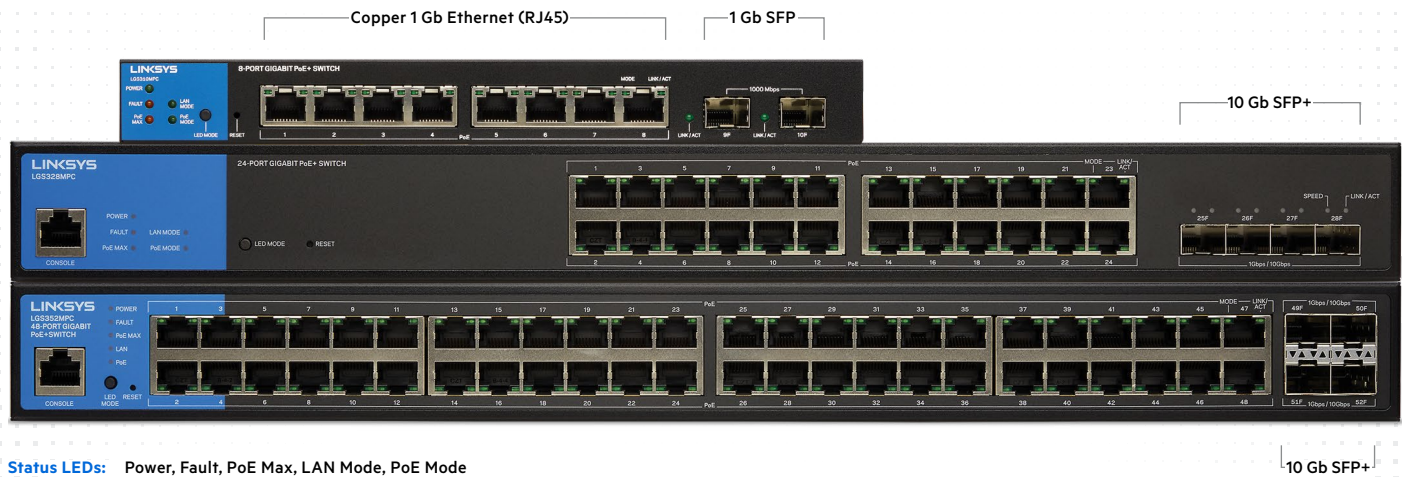
Status LEDs: Power, Fault

## Hardware Specifications

	8-Port	24-Port	48-Port
<b>Part #</b>	LGS310C	LGS328C	LGS352C
<b>Total System Ports</b>	8 x Gb Ethernet + 2 x SFP	24 x Gb Ethernet + 4 x SFP+	48 x Gb Ethernet + 4 x SFP+
<b>Copper GE Ports (RJ45)</b>	Ports 1–8	Ports 1-24	Ports 1-48
<b>1 Gb SFP Ports</b>	Ports 9-10	NA	NA
<b>10G SFP+ Ports</b>	NA	Ports 25-28	Ports 49-52
<b>CPU Memory DRAM</b>	256MB	512MB	512MB
<b>Power Input</b>	12V/1A	100–240V / 550–60 Hz / 50.7A	100–240V / 550–60 Hz / 51.5A
<b>Max Power Consumption</b>	6.54W	23.95W	43.87W
<b>Forwarding Rate</b>	14.88 Mpps	95.23 Mpps	130.95 Mpps
<b>Switching Capacity</b>	20 Gbps	128 Gbps	176 Gbps
<b>MAC Address</b>	8K	16K	32K
<b>Jumbo Frame</b>	10Kbytes	12Kbytes	12Kbytes
<b>Fans</b>	NA	NA	1, 8200 rpm (at full speed)
<b>Operating Temperature</b>	0 to 50°C	0 to 45°C	0 to 50°C
<b>Dimensions (WxHxD)</b>	24.0 x 2.7 x 10.5 cm	33.1 x 4.5 x 23.2 cm	43.8 x 4.5 x 25.5 cm
<b>Weight</b>	0.609 kg	1.989 kg	3.468 kg

### All models

- Green Power Mode EEE
- Operating Humidity: 10 to 90% RH
- Storage Humidity: 5 to 95% RH (non-condensing)
- Storage Temperature: -20 to 70°C
- Warranty Period: 5 years (most countries)\*



**Status LEDs:** Power, Fault, PoE Max, LAN Mode, PoE Mode

## Hardware Specifications

	8-Port	24-Port	48-Port
<b>Part #</b>	LGS310MPC	LGS328MPC	LGS352MPC
<b>Total System Ports</b>	8 x Gb Ethernet + 2 x SFP	24 x Gb Ethernet + 4 x SFP+	24 x Gb Ethernet + 4 x SFP+
<b>Copper Gigabit Ethernet Ports with PoE+ Support (RJ45)</b>	Ports 1–8	Ports 1-24	Ports 1-48
<b>1 Gb SFP Ports</b>	Ports 9-10	—	—
<b>10 Gb SFP+ Ports</b>	—	Ports 25-28	Ports 49-52
<b>CPU Memory DRAM</b>	256 MB	512 MB	512 MB
<b>Power Input</b>	100–240 V / 50–60 Hz / 2.2 A	100–240 V / 50–60 Hz / 7 A	100–240 V / 50–60 Hz / 12 A
<b>Power Dedicated to PoE+</b>	110 W	410 W	740 W
<b>Max Power Consumption with PoE+</b>	133.77 W	500.46 W	885 W
<b>Forwarding Rate</b>	14.88 Mpps	95.4 Mpps	130.95 Mpps
<b>Switching Capacity</b>	20 Gbps	128 Gbps	176 Gbps
<b>MAC Address</b>	8K	16K	32K
<b>Jumbo Frame</b>	10 Kbytes	12 Kbytes	12 Kbytes
<b>Fans</b>	NA	2, 8200 rpm (at full speed)	3, 8200 rpm (at full speed)
<b>Operating Temperature</b>	0 to 40°C	0 to 50°C	0 to 50°C
<b>Dimensions (WxHxD)</b>	24.0 x 2.7 x 10.5 cm	43.8 x 4.5 x 25.5 cm	43.8 x 4.5 x 30.7 cm
<b>Weight</b>	0.636 kg	3.798 kg	4.707 kg

### All models

- Green Power Mode EEE
- Operating Humidity: 10 to 90% RH
- Storage Humidity: 5 to 95% RH (non-condensing)
- Storage Temperature: -20 to 70°C
- Warranty Period: 5 years (most countries)\*

# Managed Gigabit Switches

## Managed PoE+ Gigabit Switches

LINKSYS

FOR BUSINESS

### Software Specifications

#### Number of VLANs

256 active VLANs (4,096 range).

#### VLAN

- Port-based and 802.1q VLANs
- Management VLAN
- Guest VLAN support

#### HOL Blocking

Head of line (HOL) blocking prevention.

#### Web User Interface

Built-in Web UI for easy browser-based configuration (HTTP/HTTPS).

SNMP: Version 1, 2c and 3.

#### Firmware Upgrade

Web browser upgrade (HTTP) and TFTP.

#### Port Mirroring

Traffic on multiple ports (up to 3 ports) can be mirrored to another port for analysis with a network analyzer.

#### RMON (1, 2, 3, 9)

Embedded remote monitoring (RMON) software agent support for enhanced traffic management, monitoring, and analysis.

#### SYSLLOG

- Support log admin password/IP change activity enhancement
- Local logging: buffered/flash
- Remote logging: IPv4 / IPv6 / hostname (IPv4)

#### Ethernet OAM

- SFP information
- SFP+ DDM
- Cable diagnostic
- Port statistics

#### Other Management

- Telnet
- SSH
- DHCP client
- System log
- Configuration upload and backup via HTTP or TFTP
- PING
- Traceroute
- Dual images
- SNMP

#### Security

- 802.1x Radius authentication
- DHCP snooping
- IP-MAC binding
- Port security supports limited dynamic lock and locked MAC address (256 max entries per port)
- DOS Attack Prevention
- Port Isolation (Protected Ports)

#### Link Aggregation

IEEE 802.3ad LACP, up to 8 groups with up to 8 ports per group.

#### Bandwidth Control

Rate limit according to network speed, 12 kbps ~ 1000 Mbps: in steps of 16 kbps.

#### Storm Control

Support broadcast/unknown multicast/unknown unicast 16 kbps ~ 1000 Mbps: in steps of 16 kbps.

#### Loopback Detection

Detects and prevents loops in the network by sending out loop protocol packets and shutting down affected ports.

#### Spanning Tree

- IEEE 802.1d Spanning Tree
- IEEE 802.1w Rapid Spanning Tree
- IEEE 802.1s Multiple Spanning Trees (16 instances)

#### IGMP Snooping/Querier

- IGMP (v1/v2/v3) snooping provides for fast client joins and leaves of multicast streams and limits bandwidth-intensive video traffic to only the requestors
- Supports 256 multicast groups.

#### MLD Snooping/Querier

- Support v1
- MLD snooping fast leave (per-vlan)
- MLD querier
- Dynamic router port
- Static/forbidden router
- Report suppression

#### DHCP

- IPv4 DHCP Relay
- IPv4 DHCP Relay Statistics
- IPv4 DHCP Snooping

#### L3 Static Routing

- IPv4 (63 max entries)
- IPv6 (21 max entries)

#### QoS Priority Levels

8 hardware queues

#### Access Control List (ACL)

- Ingress
- MC Based ACL
- IPv4 Based ACL
- IPv6 Based ACL
- ACL Binding
- Action: permit/deny

#### Scheduling

Strict, Weighted Round Robin (WRR).

#### Class of Service

- Port-based
- 802.1p priority-based
- IPv4/v6 IP DSCP-based

#### Auto Voice VLAN

Voice traffic is automatically assigned by OUI to a voice-specific VLAN and treated with appropriate levels.

#### Standards

- 802.3 10Base-T Ethernet
- 802.3u 100Base-T Fast Ethernet
- 802.3ab 1000Base-T Gigabit Ethernet
- 802.3z Gigabit Ethernet
- 802.3x Flow Control
- 802.3ad
- 802.1d STP
- 802.1w RSTP
- 802.1s MSTP
- 802.1q VLAN
- 802.1p Priority QoS
- 802.1x Port Access Authentication
- 802.1ab Link Layer Discovery Protocol
- 802.3af PoE+
- 802.3at PoE
- 802.3az Energy Efficient Ethernet

### Boxed Dimensions

#### Retail-Packaged Units

#### Casepacks

	Part#'s	Weight	W x H x D	Weight	W x H x D	Quantity
8-port PoE+	LGS310MPC-EU	1.87 kg	27.2 x 10 x 16.3 cm	9.86 kg	55 x 29 x 18.2 cm	5
8-port	LGS310C-EU	TBA	TBA	TBA	TBA	
24-port PoE+	LGS328MPC-EU	4.96 kg	53.8 x 10 x 37 cm	15.84 kg	55 x 39.5 x 33.5 cm	3
24-port	LGS328C-EU	3 kg	39.8 x 10.5 x 33 cm	9.55 kg	41 x 33.5 x 36 cm	
48-port PoE+	LGS352MPC-EU	6 Kg	55 x 10 x 43.3 cm	12.85 Kg	57 x 45.5 x 23.5 cm	2
48-port	LGS352C-EU	4.38 kg	54.2 x 10.2 x 36.6 cm	9.3 kg	55 x 39 x 23.4 cm	

	UPC	EAN	Tarif code	Plug Type
8-Port PoE+	LGS310MPC-EU 745883814572	4260184670642		
8-Port	LGS310C-EU 745883814565	4260184670635		
24-Port PoE+	LGS328MPC-EU 745883814596	4260184670666	851762000	Euro (CEE 7/16) + British (BS1363)
24-Port	LGS328C-EU 745883814589	4260184670659		
48-Port PoE+	LGS352MPC-EU 745883814629	4260184670680		
48-Port	LGS352C-EU 745883814602	4260184670673		



5-Year Limited Product Warranty



Manufacturer .....Belkin International  
 Brand .....Linksys  
 Model Numbers .....LGS310MPC / LGS328MPC / LGS352MPC  
 Description .....8-, 24-, 48-port Managed PoE+ Gigabit Switches  
 Model Numbers .....LGS310C / LGS328C / LGS352C  
 Description .....8-, 24-, 48-port Managed Gigabit Switches

Linksys, Belkin BV,  
 Plaza Arena, Jupiter Building,  
 Herikerbergweg 106, 1101 CM,  
 Amsterdam Z.O., The Netherlands

Made in Taiwan

Linksys, Belkin Limited,  
 Unit 1, Regent Park, Booth Drive,  
 Park Farm South, Wellingborough, Northants,  
 NN8 6GR, United Kingdom

For additional product, pricing or general information [contact](#):

Learn more at:  
[linksys.com/gb/for-business](https://linksys.com/gb/for-business)

Linksys SMB Business Support:  
[Contact Numbers & Operating Hours](#)