

USB 3.0 Mini Docking Station Adapter with Gigabit Ethernet and VGA

USB31GEVG



*actual product may vary from photos

DE: Bedienungsanleitung - de.startech.com

FR: Guide de l'utilisateur - fr.startech.com

ES: Guía del usuario - es.startech.com

IT: Guida per l'uso - it.startech.com

NL: Gebruiksaanwijzing - nl.startech.com

PT: Guia do usuário - pt.startech.com

For the most up-to-date information, please visit: www.startech.com

FCC Compliance Statement

This equipment has been tested and found to comply with the limits for a Class B digital device, pursuant to part 15 of the FCC Rules. These limits are designed to provide reasonable protection against harmful interference in a residential installation. This equipment generates, uses and can radiate radio frequency energy and, if not installed and used in accordance with the instructions, may cause harmful interference to radio communications. However, there is no guarantee that interference will not occur in a particular installation. If this equipment does cause harmful interference to radio or television reception, which can be determined by turning the equipment off and on, the user is encouraged to try to correct the interference by one or more of the following measures:

- Reorient or relocate the receiving antenna.
- Increase the separation between the equipment and receiver.
- Connect the equipment into an outlet on a circuit different from that to which the receiver is connected.
- Consult the dealer or an experienced radio/TV technician for help

This device complies with part 15 of the FCC Rules. Operation is subject to the following two conditions: (1) This device may not cause harmful interference, and (2) this device must accept any interference received, including interference that may cause undesired operation.

Changes or modifications not expressly approved by StarTech.com could void the user's authority to operate the equipment.

Industry Canada Statement

This Class B digital apparatus complies with Canadian ICES-003.

Cet appareil numérique de la classe [B] est conforme à la norme NMB-003 du Canada.

CAN ICES-3 (B)/NMB-3(B)

Use of Trademarks, Registered Trademarks, and other Protected Names and Symbols

This manual may make reference to trademarks, registered trademarks, and other protected names and/or symbols of third-party companies not related in any way to StarTech.com. Where they occur these references are for illustrative purposes only and do not represent an endorsement of a product or service by StarTech.com, or an endorsement of the product(s) to which this manual applies by the third-party company in question. Regardless of any direct acknowledgement elsewhere in the body of this document, StarTech.com hereby acknowledges that all trademarks, registered trademarks, service marks, and other protected names and/or symbols contained in this manual and related documents are the property of their respective holders.

Table of Contents

Introduction	1
Packaging Contents	1
System Requirements.....	1
Product Overview	1
Product Diagram	1
Installation	2
Driver Installation.....	2
Hardware Installation	3
Verifying Installation.....	4
Multiple Adapter Installation.....	5
Operation	5
Windows.....	5
Mac OS.....	7
Specifications.....	9
Technical Support	10
Warranty Information.....	10

Introduction

Packaging Contents

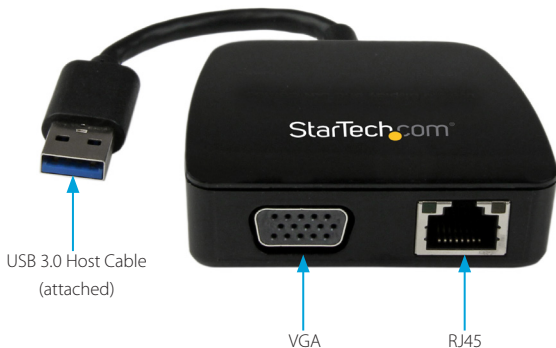
- 1x USB 3.0 Mini Docking Station Adapter
- 1x Driver CD
- 1x Instruction Manual

System Requirements

- USB enabled computer system with an available USB 3.0 port
- Windows® 8 / 8.1 (32/64bit), 7 (32/64), Vista (32/64), XP SP3 (32), Mac OS® 10.6 and up (Tested up to 10.10)
- VGA enabled display device with cables (for external monitor)

Product Overview

Product Diagram



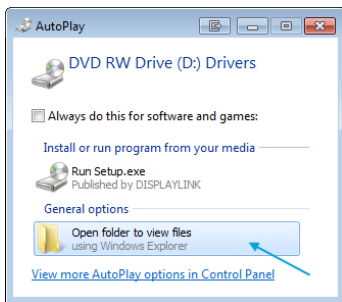
Installation

Driver Installation

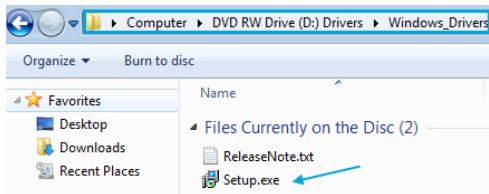
Depending on your Operating System version and whether or not you have an active network connection, the Mini Docking Station Adapter may auto-install, or auto-download the proper drivers once connected to an available USB 3.0 port on the host system. If the Mini Docking Station Adapter does not auto-install, follow the steps below to complete the Driver Installation process.

Windows

1. Download the latest drivers from the www.startech.com website (recommended), or insert the included Driver CD into your computer's CD/DVD-ROM drive.
2. If AutoPlay is enabled, select the "Open folder to view files" option when the dialog appears.



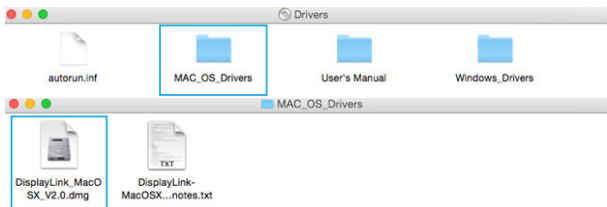
3. If AutoPlay is disabled, browse to your CD/DVD drive location, or to the downloaded driver file location and open DisplayLink ".exe" install application, located in the "Windows" folder to start the installation process.\



4. Follow any on-screen instructions to complete the software installation.
Note: You may be prompted to restart your system.

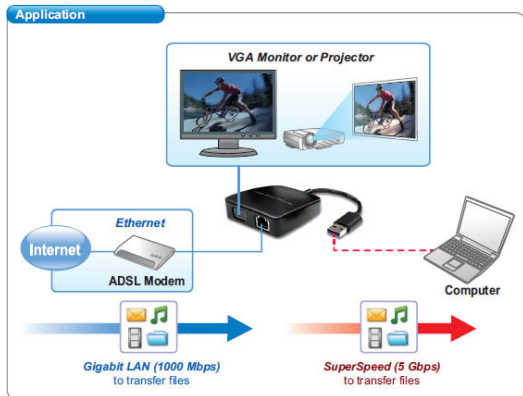
Mac OS

1. Download the latest drivers from the www.startech.com website (recommended), or insert the included Driver CD into your computers CD/DVD-ROM drive.
2. Browse to your CD/DVD drive location, or to the downloaded driver file location and open the DisplayLink “.dmg” install application, located in the “Mac” folder to start the installation process.



Hardware Installation

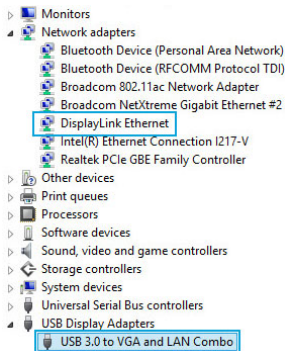
1. Connect the Mini Docking Station Adapter to an available USB 3.0 port via the attached USB cable.
- Note:** If connected to a USB 2.0 host port, performance may be limited.
2. Connect your VGA monitor to the VGA port on the Mini Docking Station Adapter.
 3. Connect your Cat 5e/6 network connection to the RJ45 port on the Mini Docking Station Adapter.



Verifying Installation

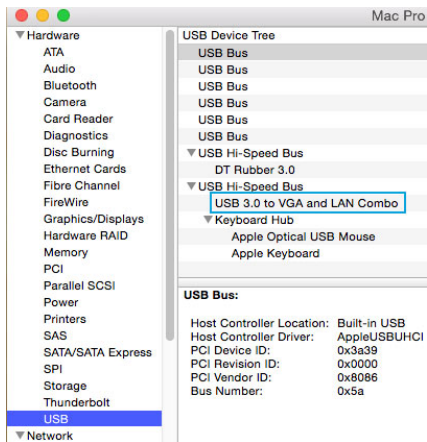
Windows

1. From the main desktop or start menu, open the *Device Manager* by right-clicking on **Computer**, and then selecting **Manage**. In the *Computer Management* window, select **Device Manager** from the left window panel. (For Windows 8.1, right-click on the **Start** button and click **Device Manager**).
2. Expand the *Network Adapters* and *USB Display Adapters* section, on a successful install you should see the following device in the list with no exclamation points or question marks. You may right-click on the device and select *Properties* to further ensure it is installed and working correctly.



Mac OS

1. Open the *System Profiler* by clicking the Apple symbol in the top left corner, selecting **About this Mac**, then select **System Report**.
2. Expand the *Hardware* section and click *USB* in the left column. With the Mini Docking Station Adapter connected, you should see the following device in the list.



Multiple Adapter Installation

Multiple USB 3.0 Mini Docking Station Adapters can be used on a single system. The number of adapters and the performance of each will depend entirely on your system specifications.

1. Complete the standard driver installation steps, up to when you plug in the first Mini Docking Station Adapter.
2. Connect another monitor/display to the second Mini Docking Station Adapter, and turn on the display.
3. Connect the USB type "A" connector on the second USB adapter to an available USB 3.0 port on the host computer. The driver installation will begin automatically.

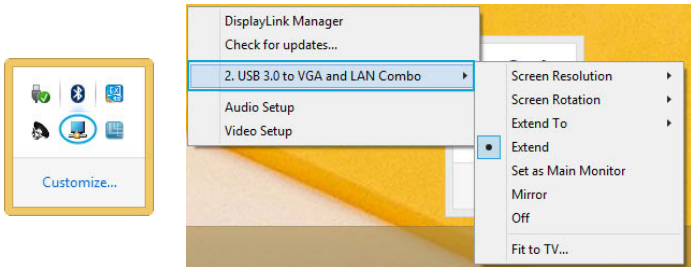
Repeat these steps for each additional Mini Docking Station Adapter you wish to install. Once all adapters are installed, reboot the comp.

Operation

Windows

When display devices are attached, an icon appears in the taskbar. This gives you access to the DisplayLink® manager menu.

1. From the taskbar, click the Show hidden icons arrow to show all available icons.
2. Click the DisplayLink® icon. You will see a “USB 3.0 to VGA and LAN Combo” option, selecting this display will extend a sub menu with the configurable options for the connected device. Each display is configured independently. All configuration options are shown and described below.



Extend

The monitor attached to the Mini Docking Station Adapter displays an extension of the user's active Windows desktop. The extra desktop area is a great productivity aid, allowing more applications or documents to be visible at a time. The device is now extended in the direction it was the last time the display was in this mode. For more control, use the “Extend To” submenu and select one of the options. This puts the device into extend mode, and places it to the Right/Left/Above/Below the main (primary) monitor.

Mirror

The monitor attached to the Mini Docking Station Adapter displays a duplication of the primary display. The resolution, color depth and refresh rate of the primary screen are replicated on the monitor connected to the adapter.

Note: If the monitors used are of different specifications, the system's primary graphics adapter will scale all settings to lower specification to maintain a uniform aspect ratio.

Extend To

This option allows you to specify the physical location of the monitor connected to the Mini Docking Station Adapter in relation to the systems on-board monitor.

Screen Resolution

This option allows you to change the resolution on the monitor connected to the Mini Docking Station Adapter. Simply select the desired option from the list of supported resolutions displayed in the sub menu.

Screen Rotation

This option allows you to change orientation in which the screen is viewed. The two most common types of orientation are portrait and landscape.

Set as Main Monitor

Selecting this option allows your computer to consider the monitor connected through the Mini Docking Station Adapter as your primary monitor. Your primary monitor displays all system notifications, and takes priority with applications.

Off

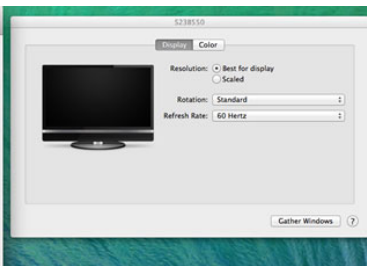
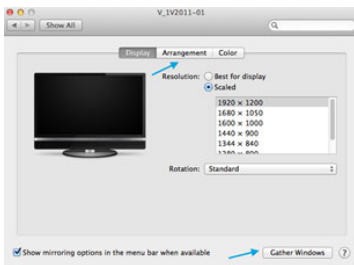
This option disables the monitor connected to the Mini Docking Station Adapter.

Mac OS

To configure the display settings and monitor positions, bring up the “Displays” preferences from the “System Preferences” menu.



The Display settings for each display will appear on the individual monitors themselves. To configure them all from a single location, press the “Gather Windows” button and each screen’s Displays Preferences windows will appear on that display. All supported video resolutions will appear. To change the positioning of each display, click on the “Arrangement” button (found only on the primary display) and you can then virtually reposition each display.



Using the Adapter in Extended or Mirror Mode

By default the Mini Docking Station Adapter will be setup as an extended display. To change the display as a mirrored/cloned display, check the *"Mirror Display"* box on the *"Arrangement"* page for that monitors Displays settings window. To return the monitor to an extended display, uncheck this option. To use both extended and mirrored displays simultaneously, turn off mirroring then in the *"Arrangement"* page press and hold the 'cmd' and 'alt' keys and drag and drop the display you wish to mirror over the primary display (shown with the white bar). Repeat this with each display you wish to mirror, all others will act as an extended display.

Changing the Primary Display

You can change which display is the primary display by moving the Menu Bar between displays. Changing the primary display affects where new windows appear. To move the Menu Bar, click the white menu bar and drag it to the display you wish to become the primary.

Media Playback

Please note that while operating in Extended Mode, the Mini Docking Station Adapter can display media files and DVDs using a broad variety of media players, however in Clone Mode, limited support is available for video playback.

Specifications

Bus Type	USB 3.0
Chipset ID	DisplayLink - DL-3700N
Industry Standards	IEEE 802.3, IEEE 802.3u, IEEE 802.3ab USB 3.0
Connector Type(s)	1 - USB 3.0 A (9 pin; SuperSpeed) Male 1 - VGA (15 pin; High Density D-Sub) Female 1 - RJ-45 Female
Auto MDIX	Yes
Compatible Networks	10/100/1000 Mbps
Full Duplex Support	Yes
Maximum Data Transfer Rate	5 Gbps (USB 3.0) 2 Gbps (Ethernet; Full-Duplex)
Maximum Analog Resolutions	1920x1200
Type and Rate	USB 3.0 - 5 Gbit/s
OS Compatibility	Windows® 8 / 8.1 (32/64bit), 7 (32/64), Vista (32/64), XP SP3 (32), Mac OS® 10.6 and up (Tested up to 10.10)
Cable Length	4.4 in [111 mm]
Product Dimensions (LxWxH)	65mm x 65mm x 19mm
Product Weight	1.7 oz [47 g]
Power Adapter Included	USB-Powered
Humidity	10-90% RH
Operating Temperature	0°C to 40°C (32°F to 104°F)
Storage Temperature	-20°C to 70°C (-4°F to 158°F)

Technical Support

StarTech.com's lifetime technical support is an integral part of our commitment to provide industry-leading solutions. If you ever need help with your product, visit www.startech.com/support and access our comprehensive selection of online tools, documentation, and downloads.

For the latest drivers/software, please visit www.startech.com/downloads

Warranty Information

This product is backed by a two year warranty.

In addition, StarTech.com warrants its products against defects in materials and workmanship for the periods noted, following the initial date of purchase. During this period, the products may be returned for repair, or replacement with equivalent products at our discretion. The warranty covers parts and labor costs only. StarTech.com does not warrant its products from defects or damages arising from misuse, abuse, alteration, or normal wear and tear.

Limitation of Liability

In no event shall the liability of StarTech.com Ltd. and StarTech.com USA LLP (or their officers, directors, employees or agents) for any damages (whether direct or indirect, special, punitive, incidental, consequential, or otherwise), loss of profits, loss of business, or any pecuniary loss, arising out of or related to the use of the product exceed the actual price paid for the product. Some states do not allow the exclusion or limitation of incidental or consequential damages. If such laws apply, the limitations or exclusions contained in this statement may not apply to you.

Hard-to-find made easy. At StarTech.com, that isn't a slogan. It's a promise.

StarTech.com is your one-stop source for every connectivity part you need. From the latest technology to legacy products — and all the parts that bridge the old and new — we can help you find the parts that connect your solutions.

We make it easy to locate the parts, and we quickly deliver them wherever they need to go. Just talk to one of our tech advisors or visit our website. You'll be connected to the products you need in no time.

Visit www.startech.com for complete information on all StarTech.com products and to access exclusive resources and time-saving tools.

StarTech.com is an ISO 9001 Registered manufacturer of connectivity and technology parts. StarTech.com was founded in 1985 and has operations in the United States, Canada, the United Kingdom and Taiwan servicing a worldwide market.