

2 Port USB KVM Switch Kit with Audio and Cables 4 Port USB KVM Switch Kit with Audio and Cables

SV211KUSB

SV411KUSB



*actual product may vary from photos

DE: Bedienungsanleitung - de.startech.com

FR: Guide de l'utilisateur - fr.startech.com

ES: Guía del usuario - es.startech.com

IT: Guida per l'uso - it.startech.com

NL: Gebruiksaanwijzing - nl.startech.com

PT: Guia do usuário - pt.startech.com

For the most up-to-date information, please visit: www.startech.com

FCC Compliance Statement

This equipment has been tested and found to comply with the limits for a Class B digital device, pursuant to part 15 of the FCC Rules. These limits are designed to provide reasonable protection against harmful interference in a residential installation. This equipment generates, uses and can radiate radio frequency energy and, if not installed and used in accordance with the instructions, may cause harmful interference to radio communications. However, there is no guarantee that interference will not occur in a particular installation. If this equipment does cause harmful interference to radio or television reception, which can be determined by turning the equipment off and on, the user is encouraged to try to correct the interference by one or more of the following measures:

- Reorient or relocate the receiving antenna.
- Increase the separation between the equipment and receiver.
- Connect the equipment into an outlet on a circuit different from that to which the receiver is connected.
- Consult the dealer or an experienced radio/TV technician for help.

Use of Trademarks, Registered Trademarks, and other Protected Names and Symbols

This manual may make reference to trademarks, registered trademarks, and other protected names and/or symbols of third-party companies not related in any way to StarTech.com. Where they occur these references are for illustrative purposes only and do not represent an endorsement of a product or service by StarTech.com, or an endorsement of the product(s) to which this manual applies by the third-party company in question. Regardless of any direct acknowledgement elsewhere in the body of this document, StarTech.com hereby acknowledges that all trademarks, registered trademarks, service marks, and other protected names and/or symbols contained in this manual and related documents are the property of their respective holders.

Table of Contents

Introduction	1
Package contents (SV211KUSB)	1
Package contents (SV411KUSB)	1
System requirements.....	1
Installation	2
Install the KVM Client application.....	2
Connect console components to the KVM Switch (SV211KUSB)	2
Connect computers to the KVM switch (SV211KUSB)	3
Connect console components to the KVM Switch (SV411KUSB)	4
Connect computers to the KVM switch (SV411KUSB)	4
Use the KVM Switch	5
Technical Support	7
Warranty Information	7

Introduction

Thank you for purchasing a StarTech.com Micro USB KVM Kit. This product allows you to access and control multiple USB-enabled computers, and features an independent audio/MIC switching function that offers uninterrupted audio, even if you're connected to another computer. For PCs running Windows systems, this KVM switch provides an easy-to-use KVM Client application to facilitate switching operations, such as PC selection and hotkey sequence programming, autoscanning, autoscan delay time programming, and independent/simultaneous audio and PC switching.

Package contents (SV211KUSB)

- 1 x Micro USB KVM Switch
- 2 x 4 ft. (1.2 m) USB + Video Data Cable
- 2 x 4 ft. (1.2 m) Audio Cables
- 1 x Software CD
- 1 x Instruction Manual

Package contents (SV411KUSB)

- 1 x Micro USB KVM Switch
- 2 x 4 ft. (1.2 m) USB + Video Data Cables
- 4 x 4 ft. (1.2 m) Audio Cables
- 1 x Software CD
- 1 x Instruction Manual

System requirements

- Console: USB keyboard, USB mouse, VGA Monitor, speakers (optional), microphone (optional)
- Host: USB keyboard and mouse support, VGA video out, speaker out (optional), microphone out (optional)

Installation

This section describes how to install the optional Windows-based software and how to connect your peripherals to the KVM switch. For the best results, make sure that all of the computers that you want to control are located as close as possible to the KVM switch and console peripherals (monitor, keyboard, mouse), as this will reduce the length of cabling required and the chance of interference.

Install the KVM Client application

The KVM Software only supports the Windows operating system. If you use other operating systems, such as Linux, you can still use the keyboard hotkey ScrLK + ScrLK or NumLock + NumLock to switch PCs. This hotkey is not available on non-PC platforms, such as Mac OS, but you can use an IBM keyboard at the console to control Apple Mac computers.

Note: Hotkey support is not natively supported in Mac OS. If you are running a Mac OS, you must use the KVM buttons to switch between computers.

1. Insert the provided CD ROM into the CD drive for each of the computers that you will be connecting to the KVM switch. The installation program USBKVMIn.exe should run automatically, but if it does not, locate the file on the disk and double-click the USBKVMIn.exe icon to launch the application.
2. When the installation is complete, you will see a KVM Switcher icon on the system tray of your Windows desktop. Right-click the icon to launch the operation menu, and double-click to evoke the configuration box.

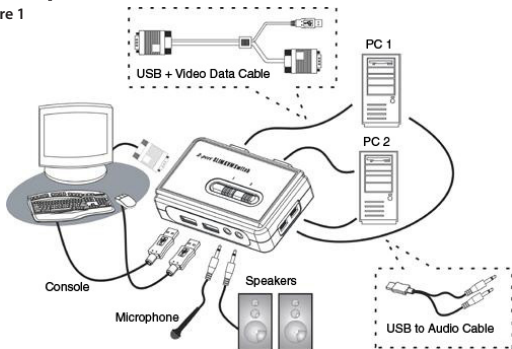
Connect console components to the KVM Switch (SV211KUSB)

1. Place the KVM switch in close proximity to the keyboard, mouse, and monitor that you want to use as the shared console controls.
2. Connect the monitor to the blue VGA port on the front panel of the switch.
3. Connect a USB keyboard to the USB Type A connector on the front panel of the switch, as shown in Figure 1.
4. Connect a USB mouse to the USB Type A connector on the front panel of the switch, as shown in Figure 1.
5. **Optional:** Connect speakers to the green 3.5 mm phono connector located on the front panel of the switch, as shown in Figure 1.
6. **Optional:** Connect a microphone to the pink 3.5 mm phono connector located on

the front panel of the switch, as shown in Figure 1.

Connect computers to the KVM switch (SV211KUSB)

Figure 1



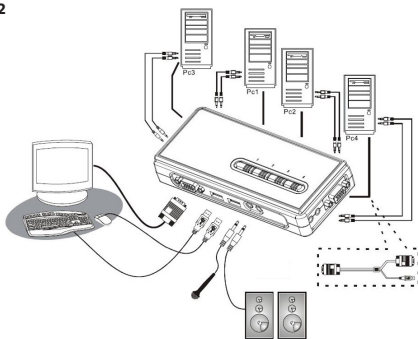
This section describes how to connect the computers that you want to control to the KVM switch.

1. Remove any existing keyboards, mice, monitors, speakers, and microphones from the computer(s).
2. Use a USB + Video Data Cable and connect one end (blue) to the Video Out connector on Computer 1. (If applicable, this is the same connector that you disconnected the monitor from in step 1.)
3. Connect the opposite end to the VGA port on the back of the KVM switch.
4. Plug the USB portion of the USB + Video Data Cable into an available USB port on computer 1.
5. **Optional:** If you want to use audio, connect the Speaker/Microphone combination cable to the MIC and Speaker out ports. Insert the opposite end of the cable (USB mini-B) into the port located on the side of the switch denoted as PC1.
6. Repeat the steps to connect any further computers.

Connect console components to the KVM Switch (SV411KUSB)

1. Place the KVM switch in close proximity to the keyboard, mouse, and monitor that you want to use as the shared console controls.
2. Connect the monitor to the blue VGA port located on the front panel of the switch.
3. Connect a USB keyboard to the USB Type A port located on the front panel of the switch, as shown in Figure 2.
4. Connect a USB mouse to the USB Type A port located on the front panel of the switch, as shown in Figure 2.
5. **Optional:** Connect speakers to the green 3.5 mm phono connector located on the front panel of the switch, as shown in Figure 2.
6. **Optional:** Connect a microphone to the pink 3.5 mm phono connector located on the front panel of the switch, as shown in Figure 2.

Figure 2



Connect computers to the KVM switch (SV411KUSB)

This section describes how to connect the computer(s) that you want to control to the KVM switch.

1. Remove any existing keyboards, mice, monitors, speakers, and microphones from the computer.
2. Use an HD-15 VGA+USB Cable and connect the VGA portion (15-pin) to the Video Out connector on computer 1. (If applicable, this is the same connector that you disconnected the monitor from in step 1.)

3. Connect the opposite end of the cable to one of the VGA/Data ports on the side or rear panel of the KVM switch, as shown in Figure 2.
4. Plug the USB portion of the USB + Video Data Cable into an available USB port on computer 1.
5. **Optional:** If you want to use audio, connect the Speaker/Microphone combination cable to the MIC and Speaker out ports on the computer. Insert the opposite ends of the cable(s) into the corresponding audio ports located next to the VGA/Data port used in step 2.
6. Repeat the steps to connect the remaining computers.

Use the KVM Switch

There are three methods of controlling your KVM Switch for PC and Audio/MIC channel selection:

1. Face-panel buttons

The face-panel button allows you to have direct control over KVM switching operation. Simply pressing the button will switch to the corresponding PC port and audio/MIC channel (if enabled). By default, PC port switching and audio/MIC port switching are bound together.

2. Use a hotkey sequence

These products features both User-definable Hotkeys for PC selection and a Universal Hotkey Sequence that can be used to switch connected PCs.

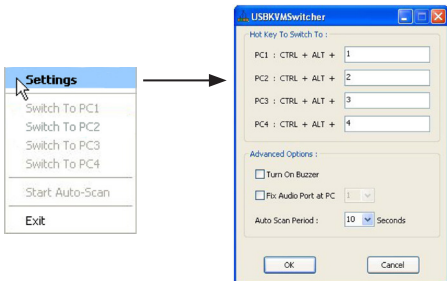
- **Universal Hotkey Sequence:** ScrLk + ScrLk or NumLock+NumLock

- **User-definable Hotkey:** Ctrl + Alt + [command key]. Refer to the KVM Switching software section for keys that are eligible to be used as a command key.

3. **KVM Switching software:** To launch the operation menu, right-click the KVM Switching icon located in the system tray.

To customize the hotkeys used with the CTRL+ALT command (for example, CTRL+ALT+1 = PC1, CTRL+ALT+2 = PC2), select Settings and enter the desired value into the text box.

Note: ALT, CTRL, SHIFT, CAPS, TAB, ESC, function keys (for example F1 or F2), and edit keys cannot be selected as hotkeys.



From within the KVM Switcher software, you also have the option to fix the audio/ MIC channel to the selected PC. When you select this option, the audio/MIC channel will be fixed and become non-switchable without reconfiguration.

Similarly, you can customize the Autoscan feature by selecting the desired Auto Scan Period from the drop-down menu. The Auto Scan period is defined as the time your KVM switch waits to switch to the next PC.

Technical Support

StarTech.com's lifetime technical support is an integral part of our commitment to provide industry-leading solutions. If you ever need help with your product, visit www.startech.com/support and access our comprehensive selection of online tools, documentation, and downloads.

For the latest drivers/software, please visit www.startech.com/downloads

Warranty Information

This product is backed by a two year warranty.

In addition, StarTech.com warrants its products against defects in materials and workmanship for the periods noted, following the initial date of purchase. During this period, the products may be returned for repair, or replacement with equivalent products at our discretion. The warranty covers parts and labor costs only. StarTech.com does not warrant its products from defects or damages arising from misuse, abuse, alteration, or normal wear and tear.

Limitation of Liability

In no event shall the liability of StarTech.com Ltd. and StarTech.com USA LLP (or their officers, directors, employees or agents) for any damages (whether direct or indirect, special, punitive, incidental, consequential, or otherwise), loss of profits, loss of business, or any pecuniary loss, arising out of or related to the use of the product exceed the actual price paid for the product. Some states do not allow the exclusion or limitation of incidental or consequential damages. If such laws apply, the limitations or exclusions contained in this statement may not apply to you.

Hard-to-find made easy. At StarTech.com, that isn't a slogan. It's a promise.

StarTech.com is your one-stop source for every connectivity part you need. From the latest technology to legacy products — and all the parts that bridge the old and new — we can help you find the parts that connect your solutions.

We make it easy to locate the parts, and we quickly deliver them wherever they need to go. Just talk to one of our tech advisors or visit our website. You'll be connected to the products you need in no time.

Visit www.startech.com for complete information on all StarTech.com products and to access exclusive resources and time-saving tools.

StarTech.com is an ISO 9001 Registered manufacturer of connectivity and technology parts. StarTech.com was founded in 1985 and has operations in the United States, Canada, the United Kingdom and Taiwan servicing a worldwide market.