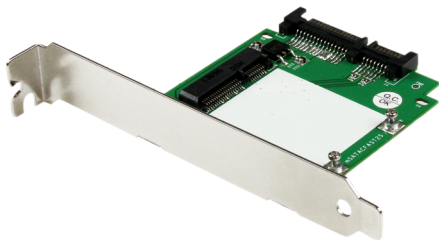


SATA to mSATA Adapter w/ Expansion Slot Mounting

SAT32MSATPEX



*actual product may vary from photos

DE: Bedienungsanleitung - de.startech.com

FR: Guide de l'utilisateur - fr.startech.com

ES: Guía del usuario - es.startech.com

IT: Guida per l'uso - it.startech.com

NL: Gebruiksaanwijzing - nl.startech.com

PT: Guia do usuário - pt.startech.com

For the most up-to-date information, please visit: www.startech.com

FCC Compliance Statement

This equipment has been tested and found to comply with the limits for a Class B digital device, pursuant to part 15 of the FCC Rules. These limits are designed to provide reasonable protection against harmful interference in a residential installation. This equipment generates, uses and can radiate radio frequency energy and, if not installed and used in accordance with the instructions, may cause harmful interference to radio communications. However, there is no guarantee that interference will not occur in a particular installation. If this equipment does cause harmful interference to radio or television reception, which can be determined by turning the equipment off and on, the user is encouraged to try to correct the interference by one or more of the following measures:

- Reorient or relocate the receiving antenna.
- Increase the separation between the equipment and receiver.
- Connect the equipment into an outlet on a circuit different from that to which the receiver is connected.
- Consult the dealer or an experienced radio/TV technician for help.

Use of Trademarks, Registered Trademarks, and other Protected Names and Symbols

This manual may make reference to trademarks, registered trademarks, and other protected names and/or symbols of third-party companies not related in any way to StarTech.com. Where they occur these references are for illustrative purposes only and do not represent an endorsement of a product or service by StarTech.com, or an endorsement of the product(s) to which this manual applies by the third-party company in question. Regardless of any direct acknowledgement elsewhere in the body of this document, StarTech.com hereby acknowledges that all trademarks, registered trademarks, service marks, and other protected names and/or symbols contained in this manual and related documents are the property of their respective holders.

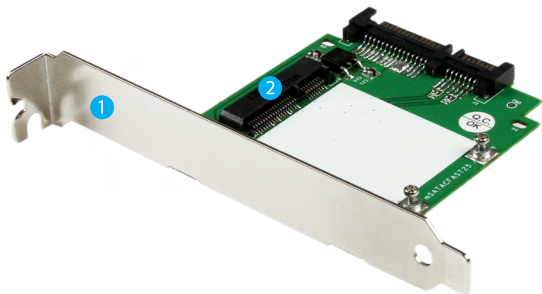
Table of Contents

Product Diagram	1
Front View	1
Rear View	1
Introduction	2
Packaging Contents	2
System Requirements.....	2
MSATA Drive Installation	3
System Installation Preparation	4
Bracket Installation.....	4
PCI Standoff installation (Only required for PCI Slot Installation).....	6
System Installation	7
Hard Drive Initialization	8
Specifications	11
Technical Support	12
Warranty Information	12

Product Diagram

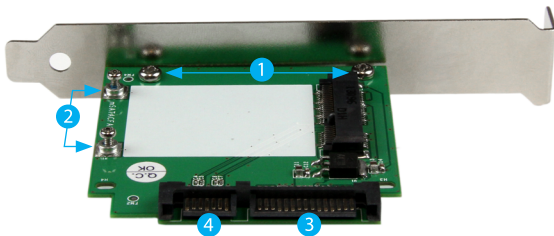
Front View

1. Mounting Bracket
2. MSATA Drive Connector



Rear View

1. Bracket Screws
2. SSD Mounting screws/holes
3. SATA Power Port
4. SATA Data Port



Introduction

Packaging Contents

- 1 x SATA to mSATA Adapter
- 1 x Full profile mounting bracket
- 1 x Low profile mounting bracket
- 2 x PCI slot standoff
- 2 x SSD Installation screws

System Requirements

- MSATA SSD Drive
- Computer System with:
 - Available Low profile or full profile Expansion slot (PCI or PCI Express)
 - Available SATA port on the motherboard
 - Available SATA Power connector on the power supply

MSATA Drive Installation

WARNING! SSD Drives and storage adapters require careful handling. If you are not careful with your SSD Drive, lost data may result. Always handle your drive with caution. Be sure that you are properly grounded by wearing an anti-static strap when handling computer components or discharge yourself of any static electricity build-up by touching a large grounded metal surface (such as the computer case) for several seconds.

1. Slide the MSATA connectors on your MSATA drive into the MSATA Drive Connector on the SAT32MSATPEX.



2. Using a small Phillips® head screw driver (not included). Insert and screw each of the included SSD Installation screws through the mounting holes on the MSATA drive into the SSD mounting holes on the SAT32MSATPEX.



3. The MSATA drive is now installed.

System Installation Preparation

The SAT32MSATPEX can be mounted in both low profile and full profile computer systems. Select the bracket that corresponds with your type of computer system.

(See Bracket Installation)

The SAT32MSATPEX can be installed in an available PCI slot, or a PCI Express slot. If You intent to install the adapter into a PCI slot, the PCI standoffs must be used. (See PCI Standoff installation)

Bracket Installation

1. Remove the undesired bracket by unscrewing the bracket screws from the top of the SAT32MSATPEX board using a small Phillips head screw driver (not included).



2. Replace the undesired bracket with your desired bracket lining up the mounting holes on the bracket with the bracket holes on the bottom of the SAT32MSATPEX.



3. Drive the screws through the bracket holes on the SAT32MSATPEX into the mounting holes on your desired bracket using the small Philips head screw driver.



4. The Bracket has now been installed.

PCI Standoff installation (Only required for PCI Slot Installation)

1. Remove the bracket by unscrewing the bracket screws from the top of the SAT32MSATPEX board using a small Phillips head screw driver (not included).



2. Place the PCI slot standoffs between the mounting holes on the bracket and the bracket holes on the bottom of the SAT32MSATPEX.



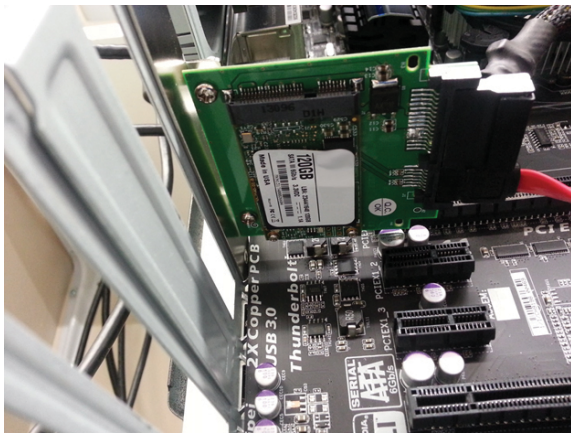
3. Drive the screws through the bracket holes on the SAT32MSATPEX and the PCI slot standoffs, into the mounting holes on the bracket using the small Philips head screw driver.



4. The SAT32MSATPEX is now ready for installation into a PCI slot.

System Installation

1. Open your computer case (refer to the computer case user manual for details), and place the SAT32MSATPEX with installed MSATA drive into an available expansion slot.
2. Using a computer case screw (not included) and the appropriate corresponding screw driver (not included). Drive the screw into the computer case through the case mounting hole on the mounting bracket (refer to the computer case user manual for details).
3. Connect a SATA cable from your motherboard to the SATA Data port on the SAT32MSATPEX.
4. Connect a SATA Power cable from your power supply to the SATA Power Port on the SAT32MSATPEX.

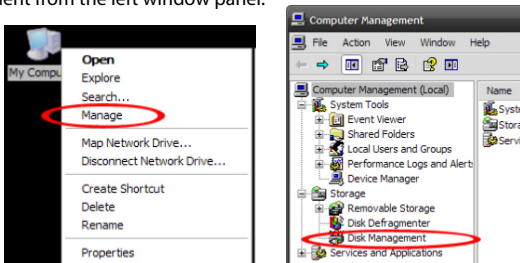


5. Replace the cover on your computer system, and installation is now completed.

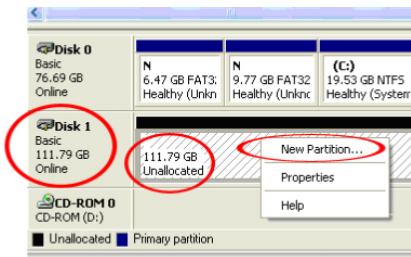
Hard Drive Initialization

If the MSATA drive is new or otherwise blank, it may need to be initialized and formatted before use. Follow the steps below in a Windows interface to initialize the drive.

1. From the main Windows desktop, right-click on “My Computer” (“Computer” in Vista/ 7 / 8), then select Manage. In the new Computer Management window, select Disk Management from the left window panel.



2. A dialog window should automatically appear, asking you to initialize the drive. Depending on the version of Windows, it will give you the option of either creating an “MBR” or “GPT” disk. GPT (GUID partition) is not compatible with some older operating systems, while MBR is supported by newer and older operating systems.
3. Once initialized, locate the Disk that says it is “Unallocated” (check the listed hard drive capacity to confirm it’s the correct hard drive) and then right-click in the section that says “Unallocated” and select “New Partition”.



4. Follow the on screen prompts to initialize the drive in the format of your choice.

Technical Support

StarTech.com's lifetime technical support is an integral part of our commitment to provide industry-leading solutions. If you ever need help with your product, visit www.startech.com/support and access our comprehensive selection of online tools, documentation, and downloads.

For the latest drivers/software, please visit www.startech.com/downloads

Warranty Information

This product is backed by a two year warranty.

In addition, StarTech.com warrants its products against defects in materials and workmanship for the periods noted, following the initial date of purchase. During this period, the products may be returned for repair, or replacement with equivalent products at our discretion. The warranty covers parts and labor costs only. StarTech.com does not warrant its products from defects or damages arising from misuse, abuse, alteration, or normal wear and tear.

Limitation of Liability

In no event shall the liability of StarTech.com Ltd. and StarTech.com USA LLP (or their officers, directors, employees or agents) for any damages (whether direct or indirect, special, punitive, incidental, consequential, or otherwise), loss of profits, loss of business, or any pecuniary loss, arising out of or related to the use of the product exceed the actual price paid for the product. Some states do not allow the exclusion or limitation of incidental or consequential damages. If such laws apply, the limitations or exclusions contained in this statement may not apply to you.

Hard-to-find made easy. At StarTech.com, that isn't a slogan. It's a promise.

StarTech.com is your one-stop source for every connectivity part you need. From the latest technology to legacy products — and all the parts that bridge the old and new — we can help you find the parts that connect your solutions.

We make it easy to locate the parts, and we quickly deliver them wherever they need to go. Just talk to one of our tech advisors or visit our website. You'll be connected to the products you need in no time.

Visit www.startech.com for complete information on all StarTech.com products and to access exclusive resources and time-saving tools.

StarTech.com is an ISO 9001 Registered manufacturer of connectivity and technology parts. StarTech.com was founded in 1985 and has operations in the United States, Canada, the United Kingdom and Taiwan servicing a worldwide market.