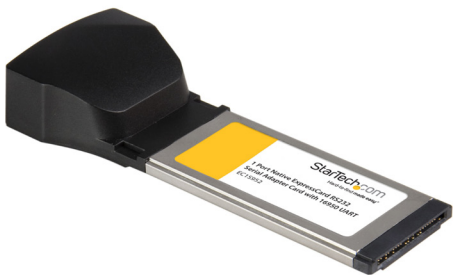


1 or 2 Port Native ExpressCard RS232 Serial Adapter Card with 16950 UART

EC1S952

EC2S952



*actual product may vary from photos

DE: Bedienungsanleitung - de.startech.com

FR: Guide de l'utilisateur - fr.startech.com

ES: Guía del usuario - es.startech.com

IT: Guida per l'uso - it.startech.com

NL: Gebruiksaanwijzing - nl.startech.com

PT: Guia do usuário - pt.startech.com

FCC Compliance Statement

This equipment has been tested and found to comply with the limits for a Class B digital device, pursuant to part 15 of the FCC Rules. These limits are designed to provide reasonable protection against harmful interference in a residential installation. This equipment generates, uses and can radiate radio frequency energy and, if not installed and used in accordance with the instructions, may cause harmful interference to radio communications. However, there is no guarantee that interference will not occur in a particular installation. If this equipment does cause harmful interference to radio or television reception, which can be determined by turning the equipment off and on, the user is encouraged to try to correct the interference by one or more of the following measures:

Reorient or relocate the receiving antenna.

Increase the separation between the equipment and receiver.

Connect the equipment into an outlet on a circuit different from that to which the receiver is connected.

Consult the dealer or an experienced radio/TV technician for help.

Use of Trademarks, Registered Trademarks, and other Protected Names and Symbols

This manual may make reference to trademarks, registered trademarks, and other protected names and/or symbols of third-party companies not related in any way to StarTech.com. Where they occur these references are for illustrative purposes only and do not represent an endorsement of a product or service by StarTech.com, or an endorsement of the product(s) to which this manual applies by the third-party company in question. Regardless of any direct acknowledgement elsewhere in the body of this document, StarTech.com hereby acknowledges that all trademarks, registered trademarks, service marks, and other protected names and/or symbols contained in this manual and related documents are the property of their respective holders.

Table of Contents

Introduction.....	1
Packaging Contents	1
System Requirements	1
Installation.....	1
Hardware Installation.....	1
Driver Installation.....	2
Verifying Installation	2
Specifications.....	3
Technical Support	4
Warranty Information.....	4

Introduction

Packaging Contents

- 1 x ExpressCard Serial adapter card
- 1 x Driver CD
- 1 x Instruction Manual
- 1 x 34 to 54mm Slot Spacer Adapter
- 1 x Dual DB9 breakout cable (EC2S952 only)

System Requirements

- An available ExpressCard slot
- Microsoft® Windows® 2000/ XP/ Server 2003/ Vista (32/64-bit)/ 7 (32/64-bit), Server 2008 R2, Linux®

Installation

Hardware Installation

For laptops with ExpressCard/54 slots, the optional 34 to 54mm Slot Spacer adapter can be used. Simply clip on the slot spacer adapter to the side of the serial adapter card as shown below.

The EC1S952/EC2S952 adapter cards will simply slide into the ExpressCard slot on the laptop. Push the card all the way in, until it 'clicks' and locks into place. To eject the card, simply push the card further into the slot until it clicks, and then release and it will then be ejected from the slot.

If using the EC2S952 Serial Adapter card, make sure to connect the DB9 breakout cable to the card, before inserting it into the ExpressCard slot.

Driver Installation

Windows 2000/XP/Server 2003/Vista

After inserting the serial adapter card, you will be prompted by the Found New Hardware Wizard. Insert the included Driver CD into the computer and then click the "Next" button to begin.

If prompted, select the "Recommended" option and click the "Next" button.

Windows will automatically search the CD for the appropriate drivers and install them.

Complete these steps for any additional devices that appear.

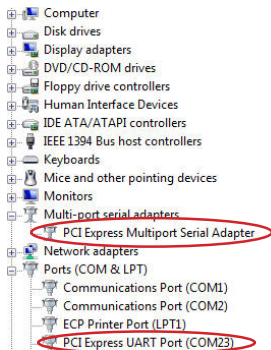
When complete, take out the Driver CD and reboot the computer.



Verifying Installation

From the main desktop, right-click on "My Computer" ("Computer" in Vista), then select Manage. In the new Computer Management window, select Device Manager from the left window panel.

Double-click on the "Ports (COM & LPT)" option. The appropriate number of additional COM ports should be visible. The port(s) are ready to connect to new devices.



Specifications

	EC1S952	EC2S952
Bus Interface	ExpressCard 1.0	
Connectors	1 x DB9 male	2 x DB9 male (via breakout cable)
Chipset	Oxford OXPcle952	
UART	16C950	
Maximum Band Rate	460 Kbps	
Form Factor	ExpressCard/34 and 54 (with included brackets)	
Supported Operating Systems	Windows 2000/ XP/ Server 2003/ Vista (32/64-bit)/ 7 (32/64-bit)/ Server 2008 R2, Linux	

Technical Support

StarTech.com's lifetime technical support is an integral part of our commitment to provide industry-leading solutions. If you ever need help with your product, visit www.startech.com/ support and access our comprehensive selection of online tools, documentation, and downloads.

Warranty Information

This product is backed by a lifetime year warranty.

In addition, StarTech.com warrants its products against defects in materials and workmanship for the periods noted, following the initial date of purchase. During this period, the products may be returned for repair, or replacement with equivalent products at our discretion. The warranty covers parts and labor costs only. StarTech.com does not warrant its products from defects or damages arising from misuse, abuse, alteration, or normal wear and tear.

Limitation of Liability

In no event shall the liability of StarTech.com Ltd. and StarTech.com USA LLP (or their officers, directors, employees or agents) for any damages (whether direct or indirect, special, punitive, incidental, consequential, or otherwise), loss of profits, loss of business, or any pecuniary loss, arising out of or related to the use of the product exceed the actual price paid for the product. Some states do not allow the exclusion or limitation of incidental or consequential damages. If such laws apply, the limitations or exclusions contained in this statement may not apply to you.

StarTech.com

Hard-to-find **made easy**®

Hard-to-find made easy. At StarTech.com, that isn't a slogan. It's a promise.

StarTech.com is your one-stop source for every connectivity part you need. From the latest technology to legacy products — and all the parts that bridge the old and new — we can help you find the parts that connect your solutions.

We make it easy to locate the parts, and we quickly deliver them wherever they need to go. Just talk to one of our tech advisors or visit our website. You'll be connected to the products you need in no time.

Visit **www.startech.com** for complete information on all StarTech.com products and to access exclusive resources and time-saving tools.

StarTech.com is an ISO 9001 Registered manufacturer of connectivity and technology parts. StarTech.com was founded in 1985 and has operations in the United States, Canada, the United Kingdom and Taiwan servicing a worldwide market.