



Unbeatable speed. Unparalleled security.

HP ScanJet Enterprise Flow N9120 fn2 Document Scanner



Accomplish more.
Faster than ever.

Handle large volumes at
blazing speeds—up to

120 ppm
240 ipm¹



The world's most
secure scanning device²

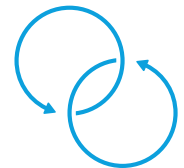
Only HP scanners repair
themselves from attacks
in real time while offering
outstanding manageability



High performance
with dual connectivity

PC connected scanner
through standard interface
or use it as a digital sender—
recommended at up to

20,000
pages per
day



Easily integrate
workflow solutions

Receive your files quickly with
one of the fastest built-in OCRs
available in the scanner market

Easily integrate workflow solutions

Flow features



Smooth unattended scanning for jobs of all kinds with HP EveryPage³



Blazing fast scan speeds



Scan profiles help automate workflow from capture to delivery



Full-size pull-out keyboard for quick data entry



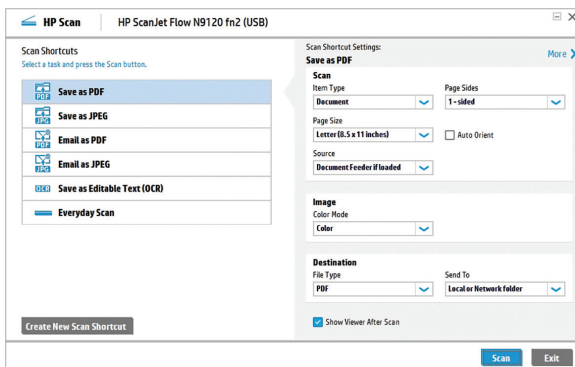
Fast built-in optical character recognition (OCR)



200-sheet ADF with single-pass two-sided scanning



Manage jobs directly using the 8-inch (20.3 cm) color touchscreen with adjustable tilt



HP Scan Software (PC-connected)

- Create profiles for the types of scan jobs you perform most often.
- Automatically crop, orient pages, detect color, straighten, and delete blank pages.
- Save as a PDF, JPEG, or text file, and then store locally, on a network folder, or in the cloud. Or, you can easily send as an attachment via email.
- Compress large files for more efficient storage.

Transform scans into searchable, editable text, encrypted PDF files, images, and more



- Word
- Excel
- PowerPoint

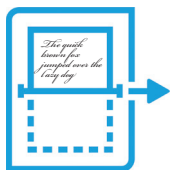


- PDF
- TXT



- JPG
- PNG
- TIFF

Built-in OCR captures data and converts text to be edited on screen



The quick brown fox jumped over the lazy dog

Do more with your data, using multiple scan-to options, including



Local and network folders



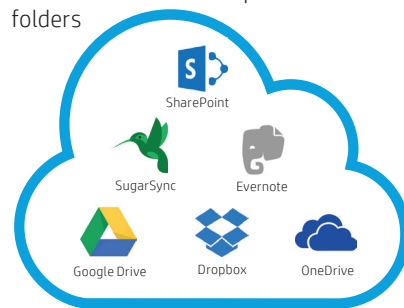
Email



Walk-up USB



FTP sites



and more



Embedded security features help protect the device from becoming an entry point for attacks on your network. Only HP scanner security automatically monitors threats, detects intrusions, and validates operating software to stop threats the moment they start.²

The world's most secure scanning device²

How does it work?

The self-healing embedded security features address four primary steps in the cycle of an HP Enterprise device.

HP JetAdvantage Security Manager completes the check cycle.⁴

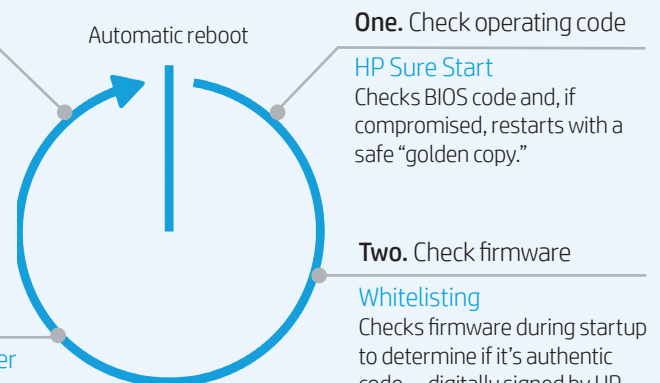
Four. Continuous monitoring

Run-time intrusion detection
Monitors memory activity to continually detect and stop attacks.

HP Connection Inspector
Inspects outgoing network connections to stop suspicious requests and thwart malware.

Three. Check printer settings

HP JetAdvantage Security Manager
After a reboot, checks and fixes any affected device security settings.



One. Check operating code

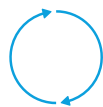
HP Sure Start
Checks BIOS code and, if compromised, restarts with a safe "golden copy."

Two. Check firmware

Whitelisting
Checks firmware during startup to determine if it's authentic code—digitally signed by HP.



Scan images right into applications with included, full-featured TWAIN (network and USB), WIA, and ISIS® (USB)



HP FutureSmart firmware helps you maintain a reliable feature set and user experience across all devices in your fleet



HP OXP offers out-of-the-box or custom-built solutions for processes, such as security, accounting, and archiving; a Hardware Integration Pocket (HIP) enables further solutions



Centralize control of your scanning environment and help build business efficiency with HP Web Jetadmin⁵



HP High-Performance Secure Hard Disk (500 GB)—helps keep sensitive data safe, and lets you securely erase files when they're no longer needed

Technical specifications

Product	SKU: L2763A; HP ScanJet Enterprise Flow N9120 fn2 Document Scanner
Scanner type and modes supported	Flatbed scanning up to 11.7 x 17 in; single-pass two-sided ADF scanning; color, grayscale, or black-and-white
Scan technology	Charge Coupled Device (CCD) and Contact Image Sensor (CIS)
Scan speeds at 200 dpi¹	Black-and-white, grayscale, and color: Simplex: Up to 120 ppm (letter and A4); Duplex: Up to 240 ipm (letter and A4)
Other advanced features	Optimize text/picture; Image adjustments; Job build; Output quality setting; Selectable scan resolution 75 to 600 dpi; Auto detect color; Edge Erase; Job notification; Blank page suppression; HP Quick Sets; HP EveryPage; ³ Auto orientation; Embedded Optical Character Recognition (OCR), Auto crop to page; Auto-tone; Scans embossed ID cards on flatbed
Duty cycle (recommended)	Up to 20,000 pages per day
Control panel	8.0-inch (20.3 cm) XGA 1024x768 LCD display; Light touch technology that supports gesture based interactions; Screen brightness-adjustment control; Home icon for quick return to the UI Home Screen; Virtual keyboard and a physical keyboard
ADF scan resolution	Optical: up to 600 ppi; Selectable output resolution dpi settings: 75, 150, 200, 300, 400, 600
Bit depth and grayscale	24-bit; 256 grayscale levels
Compatibility	Network TWAIN (TWAIN certified, version 2.1), ISIS, WIA
File formats (text and images)	PDF, JPEG, TIFF, MTIFF, XPS, PDF/A, TEXT (OCR), Unicode TEXT (OCR), RTF (OCR), Searchable PDF (OCR), Searchable PDF/A (OCR), HTML (OCR), CSV (OCR) Scan to easy access USB: PDF, JPEG, TIFF, MTIFF, XPS, PDF/A, TEXT (OCR), Unicode TEXT (OCR), RTF (OCR), Searchable PDF (OCR), Searchable PDF/A (OCR), HTML (OCR), CSV (OCR) HP Scan: PDF, JPEG, PNG, BMP, TIF, Text (.txt), Rich text (.rtf), Searchable PDF (.pdf), PDF/A (.pdf) HP Easy Scan: TIFF, PNG, JPEG, JPEG-2000, PDF, PDF-Searchable, RTF, TXT Linux: JPEG, PDF, PNG, PNM, PostScript, TEXT, TIFF
Scan input modes	Front-panel applications: Email; Save to Network Folder; Save to USB; Save to Device Memory; Open Extensibility Platform (OXP) applications; software scan using HP Scan Software; user applications via TWAIN, ISIS, WIA or Kofax VirtualRescan (VRS) Professional drivers
Memory	3584 MB (2560 MB on primary board, 1024 MB on scanner processor)
Processor speed	1.2 GHz
ADF media specifications	
Input capacity	Up to 200 sheets
Media sizes	Letter, legal, executive, 2.7 x 5.8 to 11.7 x 34 in ("long scan size"); A4, A5, A6, B5, B5 (JIS), 68 x 148 to 297 x 432 mm
Media weights	12 to 53 lb (45 to 199 g/m ²)
Media types	ADF: Paper (Plain, Inkjet, Inkjet Brochure/Glossy), Photo paper; Flatbed: Plus envelopes, labels, cards, books
Connectivity	Standard: 10/100/1000 Ethernet, 1 Hi-Speed USB Host (rear), 1 Hi-Speed USB Host (walk-up), 1 Hardware Integration Pocket, Hi-Speed USB, 1 USB-Device Port (Rear); Optional: HP Jetdirect 2900nw Print Server J8031A (adds wireless connectivity)
Drivers	TWAIN (Network and USB), ISIS, WIA
Digital sending standard features	Scan to Email, Scan to Microsoft® SharePoint®, Save-to-Network Folder, Save-to-USB drive, Send to FTP, Send to LAN Fax, Send to Internet Fax, Local Address Book, SMTP over SSL, Blank Page Removal, Edge Erase, Auto Color Sense, Auto Crop To Content, Compact PDF
Compatible operating systems	Linux Debian (7.0, 7.1, 7.2, 7.3, 7.4, 7.5, 7.6, 7.7, 7.8, 7.9, 8.0, 8.1, 8.2, 8.3, 8.4, 8.5, 8.6), Linux Fedora (22, 23, 24), Linux Mint (17, 17.1, 17.2, 17.3, 18), Linux Red Hat Enterprise (6.0, 7.0), Linux SUSE (13.2, 42.1), Linux Ubuntu (12.04, 14.04, 15.10, 16.04, 16.10), OS Mac OS X 10.12 Sierra, OS X 10.10 Yosemite, OS X 10.11 El Capitan, UNIX, Windows® 10 all 32- and 64-bit editions (excluding RT OS for Tablets), Windows 7 all 32- and 64-bit editions, Windows 8/8.1 all 32- and 64-bit editions (excluding RT OS for Tablets)
Minimum system requirements, Windows	Microsoft Windows 10, 8.1, 8, 7: 32-bit or 64-bit, 2 GB available hard disk space, CD-ROM/DVD drive or Internet connection, USB port, Microsoft Internet Explorer®
Minimum system requirements, Mac	1.3 GB available hard drive space, Internet, OS hardware requirements see Apple.com for more info
Dimensions (width x depth x height)	23.7 x 25 x 11.3 in (602 x 635 x 287 mm)
Weight	47.2 lb (21.4 kg)
What's in the box	HP ScanJet Enterprise Flow N9120 fn2 Document Scanner, Install guide, Support flyers, Warranty cards, 2 CDs, Power cords (region-specific), Power adapter, USB cables
Software included	HP browser, Mac OS Welcome Screen (directs users to hp.com or OS App Source for printer software), Online user manuals: download from hp.com , Network TWAIN and USB TWAIN solution, HP Scan, ISIS, WIA, Kofax VRS Pro, Nuance® PaperPort®, I.R.I.S. Readiris Pro™, I.R.I.S. Cardiris™
Warranty	One-year Next Business Day Onsite repair warranty, phone and Web support included. Warranty may vary by country as required by law. Go to hp.com/support to learn about HP world-class service and support options in your region.
HP Care Pack Services⁶	HP 3 year Next Business Day + Defective Media Retention Service (U9TX1E) HP 4 year Next Business Day + Defective Media Retention Service (U9TX2E) HP 5 year Next Business Day + Defective Media Retention Service (U9TX3E) HP 3 year 4 hour 9x5 + Defective Media Retention Service (U9TX4E) HP 4 year 4 hour 9x5 + Defective Media Retention Service (U9TX5E) HP 5 year 4 hour 9x5 + Defective Media Retention Service (U9TX6E) HP 1 year PW Next Business Day + Defective Media Retention Service (U9TX7PE) HP 2 year PW 4 hour 9x5 + Defective Media Retention Service (U9TX9PE)

Technical specifications continued

Accessories, optional	HP 1 GB x32 144-pin (800 MHz) DDR3 SODIMM (E5K48A) HP Internal USB Port (B5L28A) HP SmartCard Solution for US Government (CC543A) HP Multi-Protocol Proximity Card Reader (CZ208A) HP JetDirect 2900nw Print Server (J8031A) HP Optional Keyboard-Danish (A7W13A) HP Optional Keyboard-German (A7W13A) HP Optional Keyboard-French (A7W13A) HP Optional Keyboard-Swedish (A7W14A) HP ADF Roller Replacement Kit (J8J95A)
Environmental ranges	
Temperatures	Recommended operating: 50 to 95° F (10 to 35° C); Storage: -40 to 140° (-40 to 60° C)
Relative humidity range	Operating range: 15 to 80% RH (non-condensing); Storage range: 0 to 90% RH (non-condensing)
Acoustic power emissions⁷	Ready mode: 3.6 B(A); Active scan: 7.3 B(A)
Power specifications	
Power supply	Built-in; Input voltage: 100 to 240 VAC, 50/60 Hz
Power consumption ⁸	Ready: 21 watts; Sleep: 1.2 watts; Off: 0.3 watts
Environmental specifications	ENERGY STAR® certified, CECP, EPEAT® registered ⁹
Safety and regulatory compliance	IEC 60950-1:2005 +A1:2009 +A2:2013 (International); EN60950-1:2006 +A11:2009 +A1:2010; +A12:2011 +A2:2013 / +AC:2011 (EU); EN 62479:2010 / IEC 62479:2010; Low Voltage Directive 2014/35/EU with CE Mark (Europe); GS Certificate (Germany, Europe); UL/cUL Listed and UC CoC (US/Canada); CAN/CSA C22.2 No. 60950-1-07 Amendment 2:2014; Other safety approvals as required by individual countries
Electromagnetic emission standard	CISPR 22:2008 (International)-Class A; CISPR 32:2012 (International)-Class A; EN 55032: 2012 (EU)-Class A; EN 61000-3-2: 2014; EN 61000-3-3: 2013; EN 55024: 2010; EMC Directive 2014/30/EU; FCC CFR 47 Part 15 Class A / ICES-003, Issue 6 Class A; Other EMC approvals as required by individual countries

¹ Scan speeds measured from ADF. Actual processing speeds may vary depending on scan resolution, network conditions, computer performance, and application software.

² "World's most secure scanning" claim is based on an HP review of 2018 published security features of competitive in-class enterprise scanners. Only HP offers a combination of security features that can monitor to detect and automatically stop an attack then self-validate software integrity in a reboot. For more information, visit hp.com/go/scannersecurity.

³ HP EveryPage is referred to as HP Precision Feed on HP ScanJet devices introduced prior to May 2013.

⁴ HP JetAdvantage Security Manager must be purchased separately. To learn more, please visit hp.com/go/securitymanager.

⁵ HP Web Jetadmin is available for download at no additional charge at hp.com/go/webjetadmin.

⁶ To view entire list of HP Care Pack Services, visit hp.com/go/cpc.

⁷ Scanning color simplex using A4 paper at 131 ppm from ADF.

⁸ Power requirements are based on the country/region where the printer is sold. Do not convert operating voltages. This will damage the printer and void the product warranty. Power consumption values typically based on measurement of 115V device.

⁹ EPEAT® registered where applicable. EPEAT registration varies by country. See epeat.net for registration status by country.

Sign up for updates
hp.com/go/getupdated



© Copyright 2017-2018 HP Development Company, L.P. The information contained herein is subject to change without notice. The only warranties for HP products and services are set forth in the express warranty statements accompanying such products and services. Nothing herein should be construed as constituting an additional warranty. HP shall not be liable for technical or editorial errors or omissions contained herein.

Google Drive is a trademark of Google, Inc. Microsoft, SharePoint, Internet Explorer, and Windows are U.S. registered trademarks of the Microsoft group of companies.

