

# Albeo™ LED Luminaire

Linear Industrial Low Bay Lighting  
(ALC5 - Series)



VITAMIN COTTAGE  
TYPE A3 - STAND ALONE  
ALC501H39D4SNVSTKNA

## Product Description:

The Albeo™ ALC5-series LED luminaire is an energy-efficient, low maintenance alternative to traditional fluorescent in a variety of commercial and industrial, low bay lighting applications. Compact and sleek in design, the ALC5 features a long rated life of 100,000 hours. Ideal for industrial, commercial and light assembly applications, the Albeo ALC5 LED fixture can be matched with motion, daylight and wireless controls for increased energy savings.

## Applications:

- Designed to meet recommended luminance and illuminance requirements for low bay and task level applications in commercial, industrial, warehouse, office, education, health, retail and data center settings.
- Recommended for low bay lighting applications at 20 feet or lower.

## Housing:

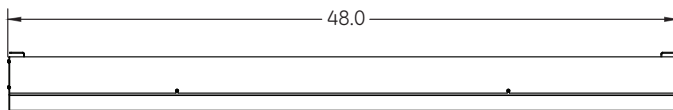
- Rugged extruded aluminum housing.

## LED & Optical Assembly:

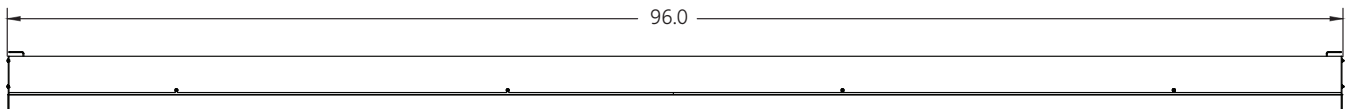
- Precision lens system provides optimized illumination for open floor plan and aisle layouts.
- Photometric distributions of 20, 40, 80, 120 degrees. Plus diffuse and wide lens options.
- Utilizes high brightness LEDs, 70, 80, 90 CRI at 4000K & 5000K typical
- LM-79, LM-80 tests and reports are performed in accordance to IESNA standards.
- Directional LEDs put light where it is needed without reflectors to greatly increase efficiency.

## Product Dimensions:

### 4 Ft.



### 8 Ft.



## Ratings:

- DLC qualified. Please refer to: <http://www.designlights.org/QPL> for complete information.
- RoHs
- /UL 1598 Suitable for Damp Locations.
- /UL 8750 LED equipment in Lighting Products.
- Temperature Rated at -30°C to +55°C (-22°F to 131°F) \*
- Projected L70 (10k) ≥ 100,000 Life Hours per IES TM-21.  
\*120V-347V available only.

## Mounting:

- Chain, cable and ½ threaded rod.
- Surface mount.
- Continuous run up to 600 ft.

## Finish:

- White polyester powder coat.

## Controls:

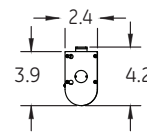
- Motion and Daylight sensors can be combined for additional energy savings.
- Wireless controls available.

## Electrical:

- 120/277 volt and 347/480 volt available.
  - System power factor is >90%\* and THD <20%\*.
  - Internal Surge Protection.
  - EMI: Title 47 CFR 15 Class A.
- \* System power factor and THD is tested and specified at 120V input and maximum load conditions.

## Warranty:

- 5-year limited system warranty standard.



imagination at work

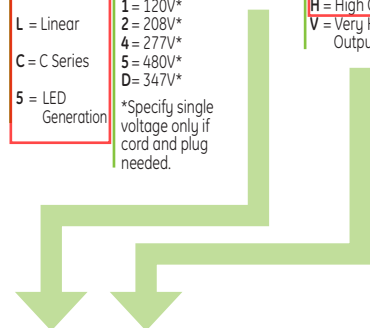
# Ordering Number Logic

## Linear Industrial Low Bay Lighting (ALC5)



**ALC5** - **1** - **V** - **W**

PRODUCT ID	VOLTAGE	MODULE	DRIVE CURRENT	LED COLOR TEMP	OPTICS BEAM	FIXTURE LENGTH	CONTINUOUS RUN	MOTION/DAYLIGHT SENSOR	CONTROL WIRING	MOUNTING	CORD	PLUG	FINISH	OPTION
<b>A</b> = Albeo <b>L</b> = Linear <b>C</b> = C Series <b>5</b> = LED Generation	<b>0</b> = 120-277V <b>1</b> = 120V* <b>2</b> = 208V* <b>4</b> = 277V* <b>5</b> = 480V* <b>D</b> = 347V* <small>*Specify single voltage only if cord and plug needed.</small>	<b>1</b> = 1 module	<b>T</b> = Standard <b>H</b> = High Output <b>V</b> = Very High Output	<b>70 Plus CRI</b> 47 = 4000K 57 = 5000K <b>80 Plus CRI</b> 48 = 4000K 58 = 5000K <b>90 Plus CRI</b> Available upon request 39 = 3500K, 90CRI	<b>1</b> = 120° <b>2</b> = 20° <b>4</b> = 40° <b>8</b> = 80° <b>D</b> = 120° Diffused <b>W</b> = Wide 160°	<b>4</b> = 4 ft <b>8</b> = 8 ft	<b>S</b> = Stand Alone <b>B</b> = Beginning <b>C</b> = Continuous	<b>N</b> = None <b>A</b> = Aisle Motion <b>B</b> = 360 Motion <b>E</b> = Daylight <b>H</b> = Pre-wired (no sensor) All motion sensors are low temperature & 0-10V rated. All daylight sensors are low temperature. 0-10V dimming sensors are not compatible with 480V option.	<b>V</b> = 0-10V	<b>ST</b> = Standard Chain, cable, rod & surface mount ready. <b>51</b> = Cable/Hook 5' Pair <b>52</b> = Cable/Hook 10' Pair <b>53</b> = Cable/Hook 15' Pair <b>54</b> = Cable/Hook 20' Pair See Mounting & Accessories	<b>K</b> = Knock out access plug <b>A</b> = 6 ft. 18-3 cord <b>B</b> = 12 ft. 18-3 cord	<b>N</b> = None <b>A</b> = 15A straight plug <b>B</b> = 20A straight plug <b>C</b> = 15A twist lock plug <b>D</b> = 20A twist lock plug	<b>W</b> = White <b>A</b> = ALUMINUM	<b>W</b> = Wireless



### 70 CRI

MODULE #	DRIVE CURRENT	FIXTURE LENGTH	TYPICAL INITIAL LUMENS 70 CRI		TYPICAL SYSTEM WATTS			LPW 4000K & 5000K			MAXIMUM AMBIENT TEMPERATURE
			4000K & 5000K		120-277V	347V	480V	120-277V	347V	480V	
1	T	4	3450		23	27	30	150	128	115	55° C
1	H	4	5550		38	41	45	146	135	123	55° C
1	V	4	7650		55	58	59	139	132	130	55° C
1	T	8	6500		41	45	48	159	144	135	55° C
1	H	8	11000		75	79	81	147	139	136	55° C
1	V	8	15300		111	117	117	138	131	131	55° C

### 80 CRI

MODULE #	DRIVE CURRENT	FIXTURE LENGTH	TYPICAL INITIAL LUMENS 80 CRI		TYPICAL SYSTEM WATTS			LPW 4000K			LPW 5000K			MAXIMUM AMBIENT TEMPERATURE
			4000K	5000K	120-277V	347V	480V	120-277V	347V	480V	120-277V	347V	480V	
1	T	4	3050	3250	23	27	30	133	113	102	141	120	108	55° C
1	H	4	4850	5250	38	41	45	128	118	108	138	128	117	55° C
1	V	4	6750	7250	55	58	59	123	116	114	132	125	123	55° C
1	T	8	5800	6200	41	45	48	141	129	121	151	138	129	55° C
1	H	8	9700	10400	75	79	81	129	123	120	139	132	128	55° C
1	V	8	13500	14500	111	117	117	122	115	115	131	124	124	55° C

OPTICS BEAM	% OUTPUT
120° CLEAR	100%
120° DIFFUSE	97%
20°	93%
40°	92%
80°	98%
WIDE	98%

MODULE CONFIGURATION	MAX WEIGHT
4 Ft. 120-277V	8 lbs. max
4 Ft. 347/480V	11 lbs. max
8 Ft. 120-277V	16 lbs. max
8 Ft. 347/480V	19 lbs. max



www.gelighting.com

GE and the GE Monogram are trademarks of the General Electric Company. All other trademarks are the property of their respective owners. Information provided is subject to change without notice. All values are design or typical values when measured under laboratory conditions. GE Lighting and GE Lighting Solutions, LLC are businesses of the General Electric Company. © 2015 GE.

ALB026 (Rev 06/04/15)