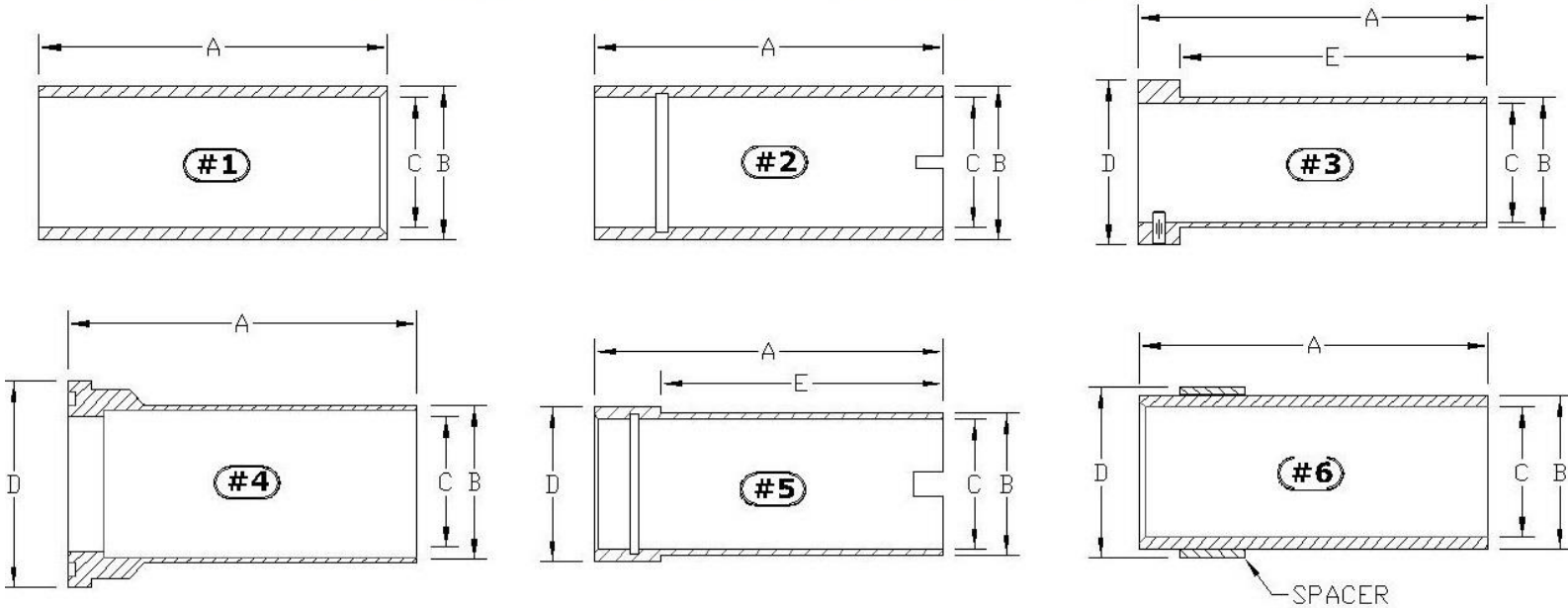


The Figures Below are NOT TO SCALE



Select the design # closes to your sleeve, then provide the # and your sleeve dimensions to an SDI Sales Associate and they will be glad to assist you in matching your needs.

SDI Part #	Manufacturers Ref #	Description	Dim A	Dim B	Dim C	Fig	Characteristics	Material
	ALLIS CHALMERS							
C125M002	52-118-02-002	1.250" Sleeve for Allis Chalmers	1.25	4.71	1.003	5		316SS
C125M005		1.250" Sleeve for Allis Chalmers	1.25	3.125	1.003	1		Bronze
C125M006		1.250" Sleeve for Allis Chalmers	1.25	4.71	1.003	5		Bronze
C1620005		1.625" Sleeve for Allis Chalmers 213J-215 (Chamfered)	1.625	4.375	1.377	1		Bronze
C162M005	52-118-013-002	1.625" Sleeve for Allis-Chalmers	1.625	3.687	1.377	1		Bronze
C162M007	2000 Series	1.625" Sleeve for Allis Chalmers	1.625	3.687	1.377	1		SS
C1620001	2000 Series	1.625" Sleeve for Allis-Chalmers	1.625	3.687	1.379	6		Bronze
C162M004		1.625" Sleeve for Allis Chalmers	1.625	4	1.379	1		
C187M001	52-109-473-001	1.875" Sleeve for Allis Chalmers	1.875	4.375	1.625	1		316SS
C2000001	2000 Series	2.000" Sleeve for Allis Chalmers	2	3.687	1.63	1		SS

SDI Part #	Manufacturers Ref #	Description	Dim A	Dim B	Dim C	Fig	Characteristics	Material
ARMSTRONG								
835085-001		1.250" Armstrong Sleeve & Spacer Kit (Old Style)	0	0	0	1		
425869-001		1.250" Sleeve for Armstrong (145JM Frame)	1.25	2.25	0.998	1		Bronze
AURORA								
C112-Y01	756-0077-208	1.125" Sleeve for Aurora	1.125	2.312	1.004	3		Bronze
C125Y001		1.250" Sleeve for Aurora	1.25	2.5	1.003	2		Bronze
C150-Y01	756-0078-208	1.500" Sleeve for Aurora	1.5	2.437	1.378	3		Bronze
C150-Y03		1.500" Sleeve for Aurora	1.5	2.437	1.378	3	With Pin	316SS
BELL & GOSSETT								
C1250010	185140	1.250" Sleeve for B&G	1.25	1.218	0.998	1		Bronze
C1250020		1.250" Sleeve for B&G	1.25	2.5	0.998	1	Press Fit	Bronze
C1250021	CCV-2030-4	1.250" Sleeve for B&G	1.25	2.36	0.998	1		316SS
C125P-06	185024	1.250" Sleeve for B & G	1.25	2.365	1.003	1		Bronze
C125R010	185140	1.250" Sleeve for Marlow/B&G	1.25	1.218	0.998	1		304SS
C162P002	185142	1.625" Sleeve for B & G	1.625	1.73	1.377	1		Bronze
C162P006	185021	1.625" Sleeve for B & G	1.625	3.75	1.377	1		Bronze
C200R002	AC0608	2.000" Sleeve for Marlow/B&G	2	3.672	1.627	1		316SS
C237R001	P-78741	2.375" Sleeve for Marlow/B&G	2.375	2.312	2.002	1		Bronze
BERKELEY								
SL-00619	00619	1.250" Packing Sleeve for Berkley	1.25	2.19	0.998		Press Fit	17-4
SL-19310-1	19310 Press Fit	1.250" Sleeve for Berkley	1.25	2.25	0.999	1	Press Fit with Snap Ring	SS
C125L010		1.250" Packing Sleeve for Berkley	1.25	2.19	1.002		Slip Fit	17-4
SL-19310	19310 Slip Fit	1.250" Sleeve for Berkley	1.25	2.25	1.004	1	Snap Ring / Slip Fit	SS
SL-05149-300	05149	1.750" Packing Sleeve for Berkley 254JM	1.75	3.5	1.372			304SS
SL-05149	05149	1.750" 17-4 Packing Sleeve Berkley 254JP	1.75	3.5	1.373		Press Fit	17-4
SL-18869	S-18869	1.750" Sleeve for Berkley	1.75	2.375	1.377	1	Snap Ring	SS
C212L-01	S07073	2.125" Sleeve for Berkeley	2.125	3.750	1.750	1		SS

SDI Part #	Manufacturers Ref #	Description	Dim A	Dim B	Dim C	Fig	Characteristics	Material
HYDROMATIC								
C150L001	1509-002-1	1.500" Sleeve for Hydromatic	1.5	1.5	1.133	1	O-Ring On I.D.	304SS
C187L-01	14857-000-1	1.875" Sleeve for Hydromatic	1.875	2	1.687	3	With Pin	304SS
C187L-11	14857-000-1	1.875" Sleeve for Hydromatic	1.875	2	1.687	3	With Pin	316SS
C200-L01	02602-000-3	2.000" Sleeve for Hydromatic	2	1.98	1.812	2/3		304SS
C200-L03	3801-001-1	2.000" Sleeve for Hydromatic (3804-001-1)	2	2.125	1.812	3	With Pin	304SS
C225-L01	02310-007-3	2.250" Sleeve for Hydromatic	2.25	2.178	1.875	3	O-Ring on I.D.	304SS
C225-L06	2310-003-3	2.250" Sleeve for Hydromatic	2.25	2.175	1.875	2/3		304SS
C300-L01	2310-002-3	3.000" Sleeve for Hydromatic	3	2.187	2.817	3		304SS
C300-L02	2310-005-3	3.000" Sleeve for Hydromatic	3	2.375	2.812	5	Steps on O.D.	304SS
C300-L04	2310-006-3	3.000" Sleeve for Hydromatic	3	3.222	2.812	5	Steps on O.D.	304SS
C300-L05	2310-004-3	3.000" Sleeve for Hydromatic	3	2.795	2.812	5	Steps on O.D.	304SS
INGERSOLL RAND								
C1120001		1.125" Sleeve for Ingersol Rand TY-HO	1.125	4.225	0.878	6		SS
C137K002		1.375" Sleeve for Ingersol Rand Pump	1.375	2.432	0.923	1	Keyway & O-Ring	316SS
C175K001	959437-02	1.750" Sleeve Ingersol-Rand	1.750	3.275	1.375	1	Keyway & O-Ring	SS
JACUZZI								
C-125L006		1.250" Sleeve for Jacuzzi Pump	1.25	4.437	1.004	2		Bronze
MARLOW								
C125R010	185140	1.250" Sleeve for Marlow/B&G	1.25	1.218	0.998	1		304SS
C162R002		1.625" Sleeve for Marlow	1.625	3.75	1.378	1		Bronze
C162R006		1.625" Sleeve for Marlow 530SL Series	1.625	1.73	1.377	1		316SS
C162R008		1.625" Sleeve for Marlow	1.625	3.713	1.377	1		Bronze
C200R001	AC0609	2.000" Sleeve for Marlow/B&G	2	3.672	1.627	1		Bronze
C200R002	AC0608	2.000" Sleeve for Marlow/B&G	2	3.672	1.627	1		316SS
C237R001	P-78741	2.375" Sleeve for Marlow/B&G	2.375	2.312	2.002	1		Bronze
C237R002		2.375" Sleeve for Marlow 530SL Series	2.375	2.312	2.002	1		316SS

SDI Part #	Manufacturers Ref #	Description	Dim A	Dim B	Dim C	Fig	Characteristics	Material
	PACO							
C125P003	05017547B	1.250" Sleeve for Paco	1.25	2.375	1.003	1	Slip Fit	Bronze
C125P004	05017547B in SS	1.250" Sleeve for Paco	1.25	2.375	1.003	1	Slip Fit	SS
C175P001	05016451B	1.750" Sleeve for Paco	1.75	3.375	1.378	1	Slip Fit	Bronze
C175P003	05016451H303	1.750" Sleeve for Paco	1.75	3.375	1.378	1	Slip Fit	SS
C175P004		1.750" Sleeve for Paco	1.75	4.5	1.378	1	Slip Fit	Bronze
C225P-01		2.250" Sleeve for Paco	2.25	4	1.754	1	Snap Ring	Bronze
	PEERLESS							
C125P-01	BSE-2	1.250" Sleeve for Peerless	1.25	2.5	1.003	2		Bronze
C125P-02	BSE-2	1.250" Sleeve for Peerless	1.25	2.5	1.003	2		316SS
C150P006	BSE-3	1.500" Sleeve for Peerless	1.5	3.25	1.378	5		316SS
C125P-10	BSE-2	1.250" Sleeve for Peerless	1.25	2.5	1.003	2		304SS
C150P013	BSE-3	1.500" Sleeve for Peerless	1.5	3.25	1.375	2		304SS
C150P003	2691521	1.500" Sleeve for Peerless (BSE-3)	1.5	3.25	1.379	5		Bronze
C175P-02		1.750" Sleeve for Peerless	1.75	3.38	1.379	1		Bronze
	SCOT							
C150S002	118.000.344	1.500" Sleeve for Scot Pump	1.5	2.375	1.003	1		Bronze
C150S005	118.000.344	1.500" Sleeve for Scot Pump	1.5	2.125	1.003	1		Bronze
C150S003	118.000-466	1.500" Sleeve for Scot Pump	1.5	2.125	1.003	1		Bronze
	SMITH & LOVELESS							
C212D-01	60C159	2.125" Sleeve for Smith & Loveless Seal# H60A156	2.488	1.75	2.128	1	Inner & Outer O-Ring	
C300D-01	60C112	3.000" Sleeve for Smith & Loveless	3.446	1.718	3.004		Inner & Outer O-Ring	
	STA-RITE							
C112L002	C23-56SS	1.125" Sleeve for Sta-Rite E Series	1.125	4.55	1.004	5		SS
SL-2358	C23-58	1.250" Sleeve for Sta-Rite (Frame184JM/215JM)	1.25	2.285	1.003	1	O-Ring	SS
SL-2358-1	C23-58 Press Fit	1.250" Sleeve for Sta-Rite	1.25	2.285	0.997	1	Press Fit	SS
C125L004		1.250" Sleeve for Sta-Rite 184 JP Frame	1.25	4.687	1.003	1	Key Way	SS

SDI Part #	Manufacturers Ref #	Description	Dim A	Dim B	Dim C	Fig	Characteristics	Material
TACO								
C112P001	950-519RP	1.125" Sleeve for Taco	1.125	2.64	0.883	5	Square Neck	Bronze
C112P003	951-3034BRP	1.125" Sleeve Taco/Taper Neck/2.062" Lgth	1.125	2.062	1.004	4	Tapered Neck Design	Bronze
C112P006	953-1119RP	1.125" Sleeve for Taco	1.125	1.92	1.003	4	Tapered Neck Design	Bronze
C150P001	950-520RP or 665BRP	1.500" Sleeve for Taco	1.5	2.9	1.255	5	Square Neck Design	Bronze
C150P005	951-3035	1.500" Sleeve Taco/Tapered/2.688"Lgth)	1.5	2.688	1.255	4	Tapered Neck Design	Bronze
C150P008	862-103BRP or 172BRP	1.500" Sleeve for Taco	1.5	3.843	1.378	1		Bronze
C150P009	953-1171RP or 983-15496BRP	1.500" Sleeve for Taco	1.5	2.105	1.255	4	Tapered Neck Design	Bronze
C162P-01	950-1247BRP	1.625" Sleeve for Taco	1.625	5.71	1.378	5		
C187P-01	950-1369 or 3038BRP	1.875" Sleeve for Taco	1.875	2.7	1.631	3	Buna Square Ring on End	Bronze
C187P-02	951-3037RP	1.875" Sleeve for Taco	1.875	2.562	1.633	2	Buna Square Ring on End	Bronze
C200P003	950-518RP or 521RP	2.000" Sleeve for Taco	2	3.35	1.63	3		Bronze
WEINMAN								
C175W-01	H1993-1-C9	1.750" Sleeve for Weinman	1.75	3.625	1.378	1	Slip Fit	Bronze
5204-C9/J4		Sleeve for Weinman 2.5 K2A	0	0	0			