



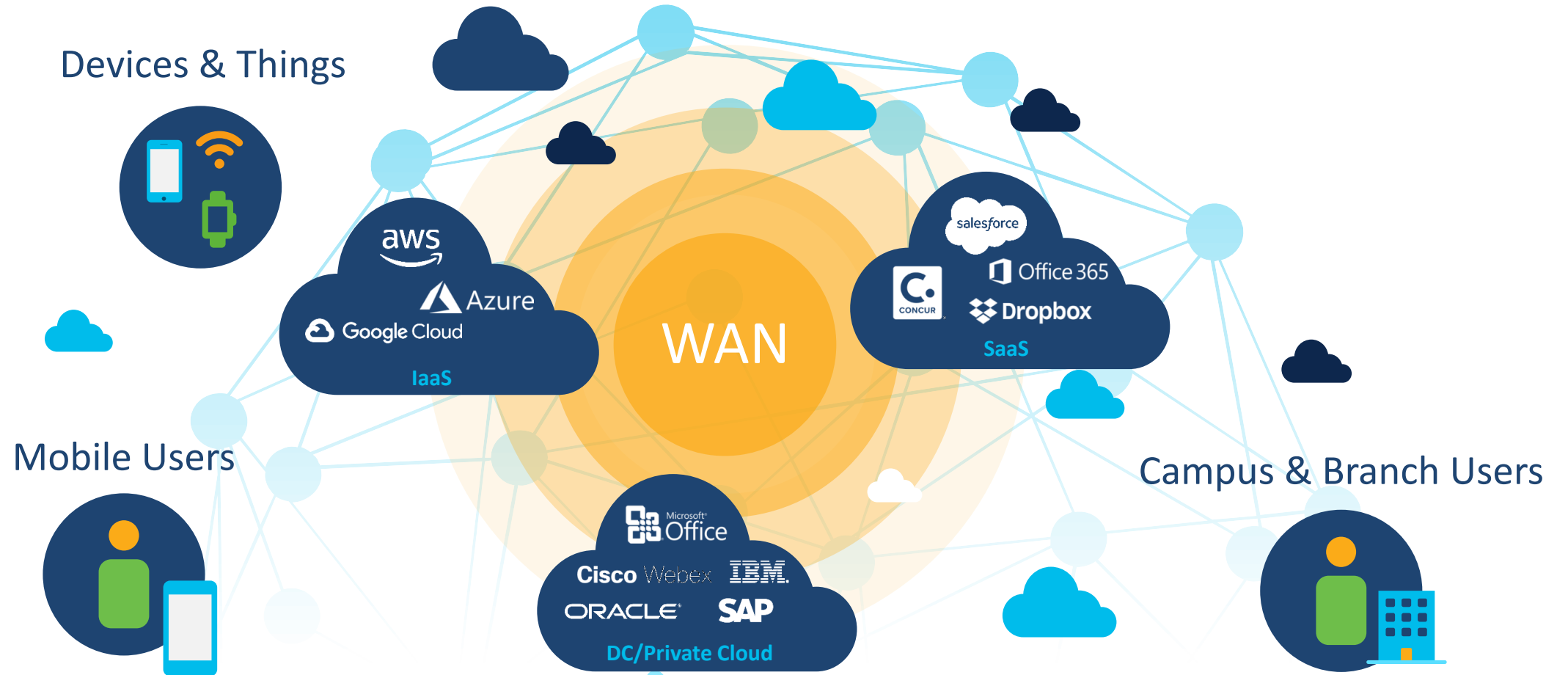
Catalyst 8000 Edge Platforms

Keegan Uchacz
Systems Engineer
December 10, 2020

Agenda

- Business Forecast
- Why is it “Catalyst”?
- What makes it great?
- How does this help us?

It's a Multicloud World



Journey to Cloud

Fueled by Technology Transformation

Multicloud



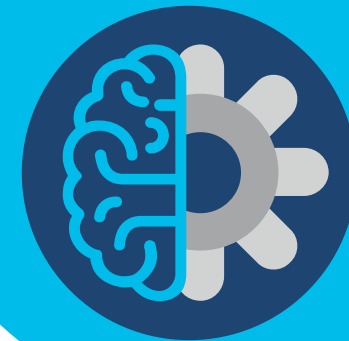
“Cloud migration will continue to accelerate the adoption of SD-WAN”
- Markets & Markets

5G,
Edge Compute



“5G Enterprise Market is expected... CAGR of over 42% during the forecast period (2020-2025)... pushing toward the industrial revolution 4.0”
- Mordor Intelligence Report

AI/ML
Insights



“By 2022, 72% of network strategists project using AI-enabled predictive insights or prescriptive remediation”
- Cisco VNI Report

Facilitating more service acceleration at the edge in a multicloud world

Powered by secure cloud scale SD-WAN

Cisco's flexible architecture for Intent-based Networking

Any Deployment



On-premise | Cloud | Multi-tenant
Automation | Network Insights | Machine Learning | AI
Open | Programmable | Scalable

Any Service



Multicloud Optimization



Multi-Layer Security



Analytics



Voice



Multi-Domain IBN Policy

Any Transport



Satellite



Internet



MPLS



5G/LTE

Any Location



Branch



Colocation



Cloud



Remote Work



Cisco Catalyst 8000 Edge Platforms Family

Cloud

VNF



Catalyst 8000v
Hypervisor/Cloud

Headend

QFP

Catalyst 8500



User Centric
Design

Branch

x86



Catalyst 8300

IOS XE
Common Software Architecture

x86, QFP
Scalable Hardware Architecture

Under the Hood

Cisco Catalyst 8000 Edge Platforms Family

The Leading SD-WAN Edge Platforms with Rich Services



Performance and Rich Services

C8500-12XQC (30Gbps+ SD-WAN IPsec)



C8500-12X (number coming soon)



C8300-2N2S-4T2X (5Gbps+ SD-WAN IPsec)



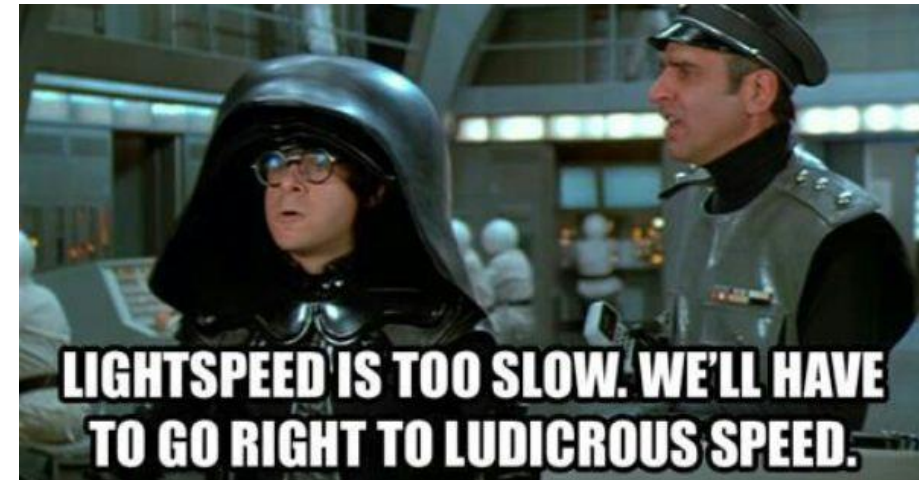
C8300-1N1S-4T2X (5Gbps+ SD-WAN IPsec)



C8300-2N2S-6T (up to 2Gbps SD-WAN IPsec)



C8300-1N1S-6T (up to 2Gbps SD-WAN IPsec)



Scalable Architecture with x86 and QFP

Third Generation QFP ASIC Innovation



2X queues
256k



Up to 2X NBAR
Up to 80Gbps



Inline crypto
Up to 133Gbps



3X CEF
Up to 189Gbps



8X DRAM
32M CGN | 6M FW
Sessions



Integrated L2 MAC

Compact, Powerful
100/40/10/1 GE

Enhanced QoS/Buffering
Ingress classification, oversubscription

Security
WAN Macsec

Time Sensitive Networking
IEEE 1588*

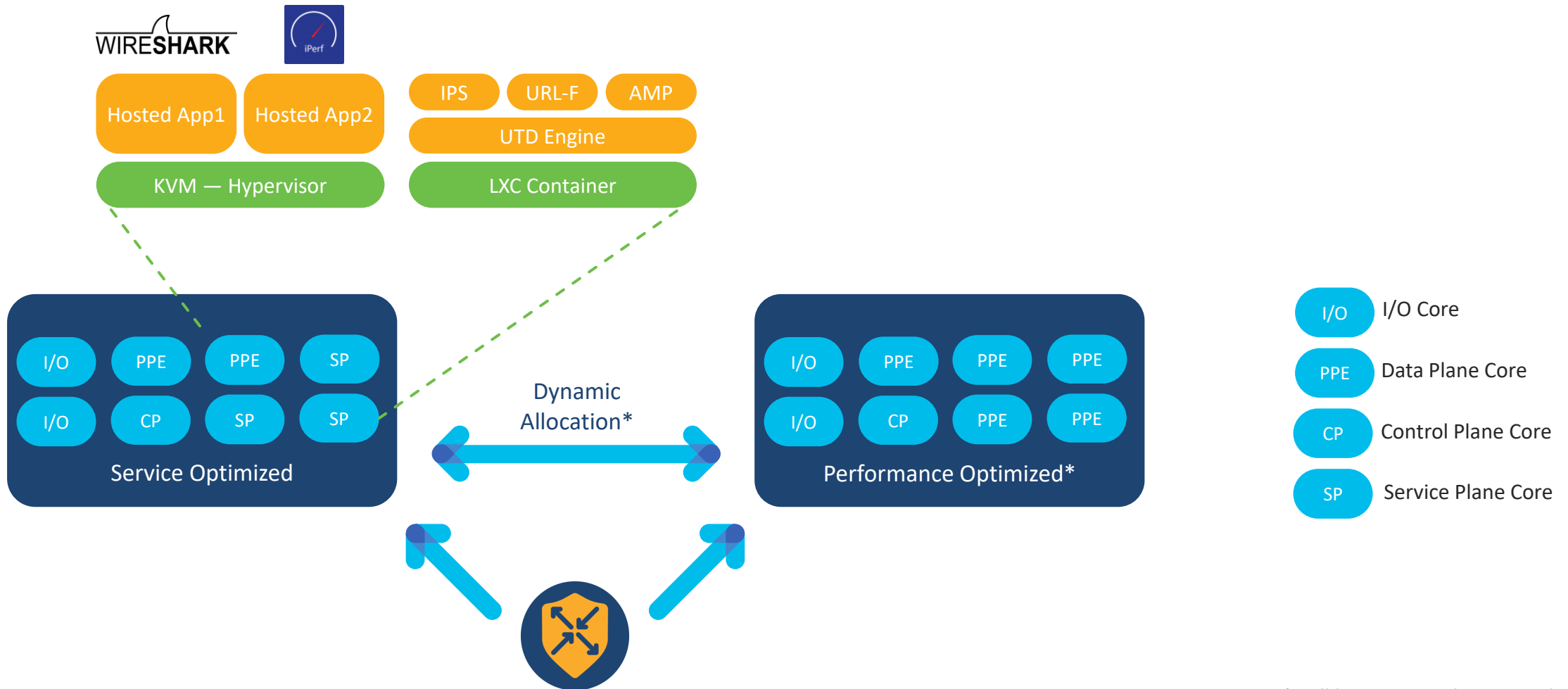
* not supported in sw yet

Scalable & Programmable ASIC – Adapts to the New Technologies



X86 Multi-core CPU

x86 System on Chip (SoC) Architecture

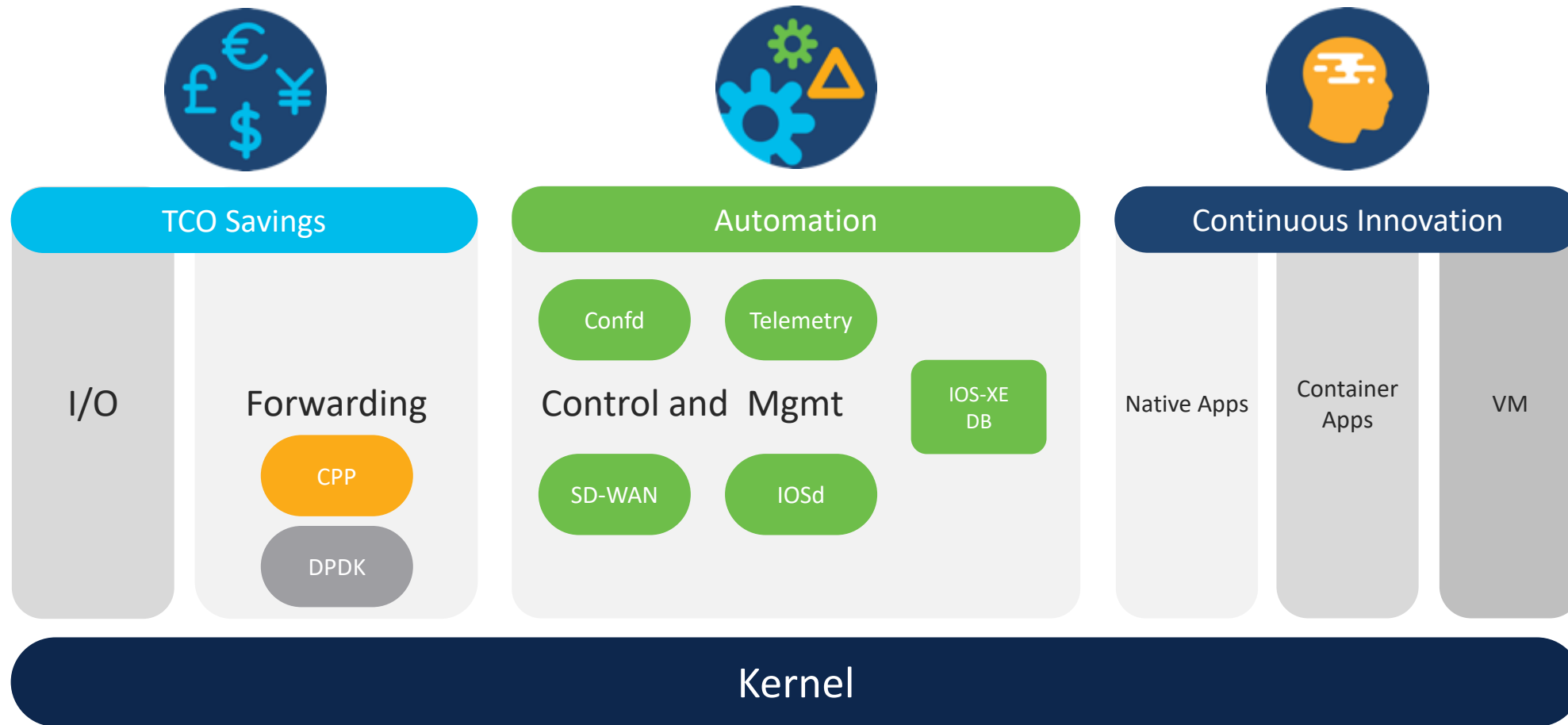


* will be supported in 17.4 release

Flexible Core allocation – meet throughput and services demand



Open IOS XE — A Modern Operating System



Catalyst 8000 Edge User Centric Design

Catalyst 8K Family with Built-in Radio Frequency Identification (RFID)



Passive Ultra High Frequency (UHF) RFID

Locating the device easy

Good read range: 1 to 4 meters

Industry standard: ISO
18000-6C compliant



Inventory Management (Tracking) has never been Easier



Catalyst 8K Family – Label Tray



Label Tray



A plastic strip contains

Product ID
Serial Number
CLEI

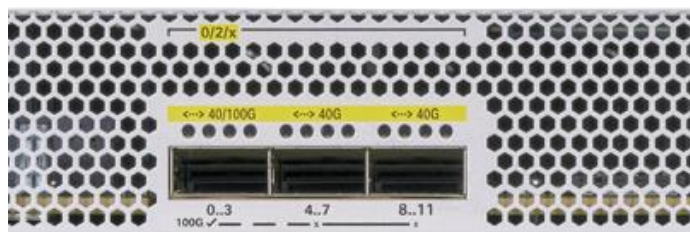
TAN
MAC and
Hardware version number

QR code encoded above info

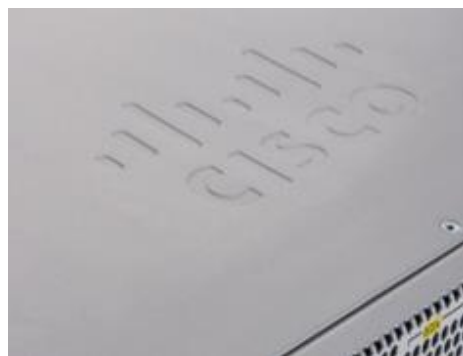
Inventory Management (Tracking) has never been Easier



Catalyst 8K Family – Industrial Design & Ergonomics



**Circle Pattern
Hex Packing**



**Satin Aluminum Based
Textured Finish**



**Rounded Frame
4 mm**



Catalyst 8500

Cisco Catalyst 8500 Series Edge Platforms

Highly Capable 1RU SD-WAN Headend

Multi-services Support

NBAR2, NAT, Firewall, QoS, etc.
Industry's Leading Service Edge Platforms

Edge Intelligence

Compute
Container based Apps



Scale

Up to 8000 SD-WAN Tunnel Aggregation
High Speed 100/40 Gigabit Ethernet Ports
High Density 10/1 Gigabit Ethernet Ports

Multi-Layer Security

High Throughput MACsec and IPsec
Trustworthy Systems

System

Cisco Catalyst
8500 Series
Edge Platform



Connectivity

All Ports
Built-In

WAN
MACsec

Third
Generatio
n QFP

Up to
200Gbp
s CEF

5G Ready

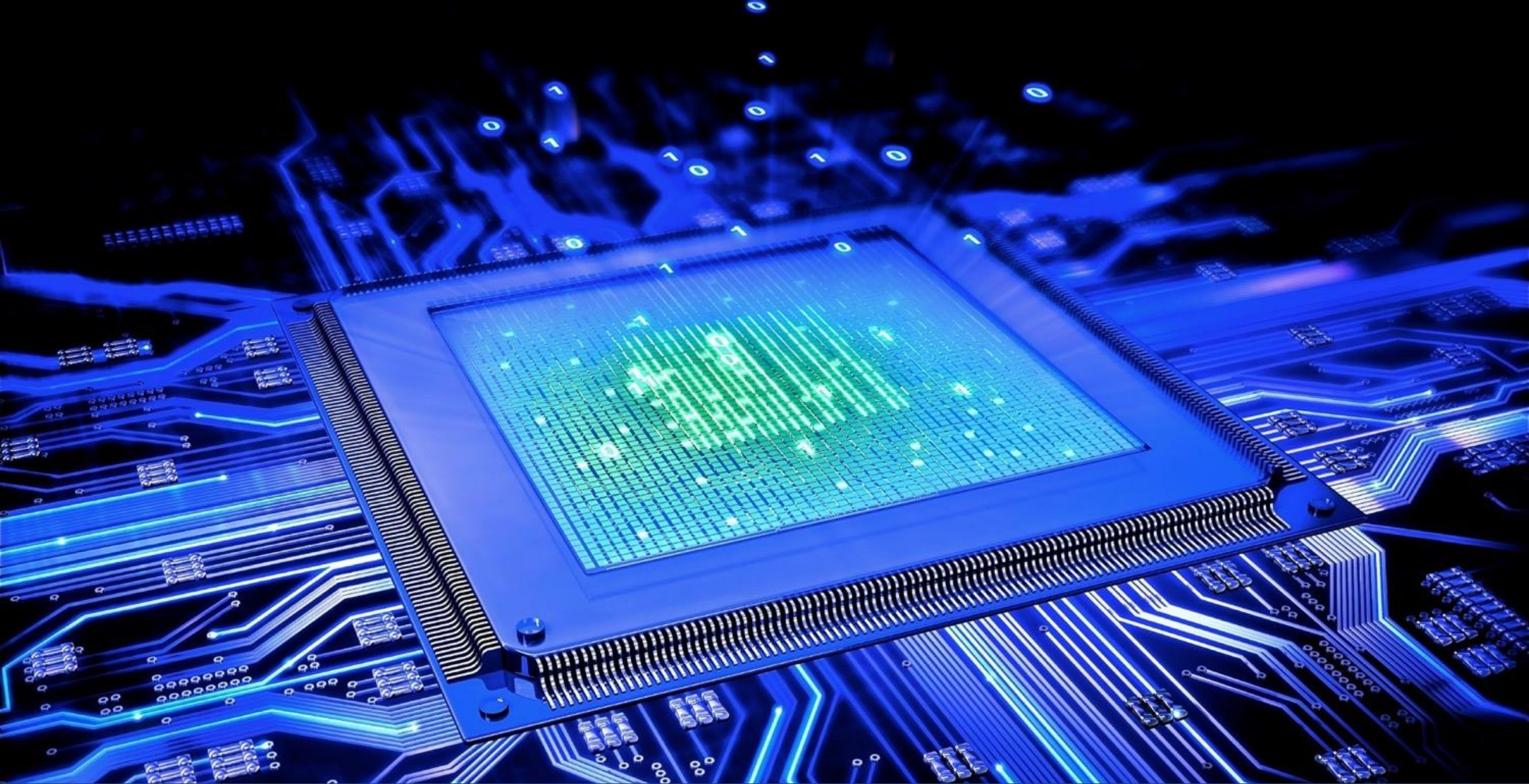
Manageability

vManage

Multi-tenant

Open APIs

Analytics

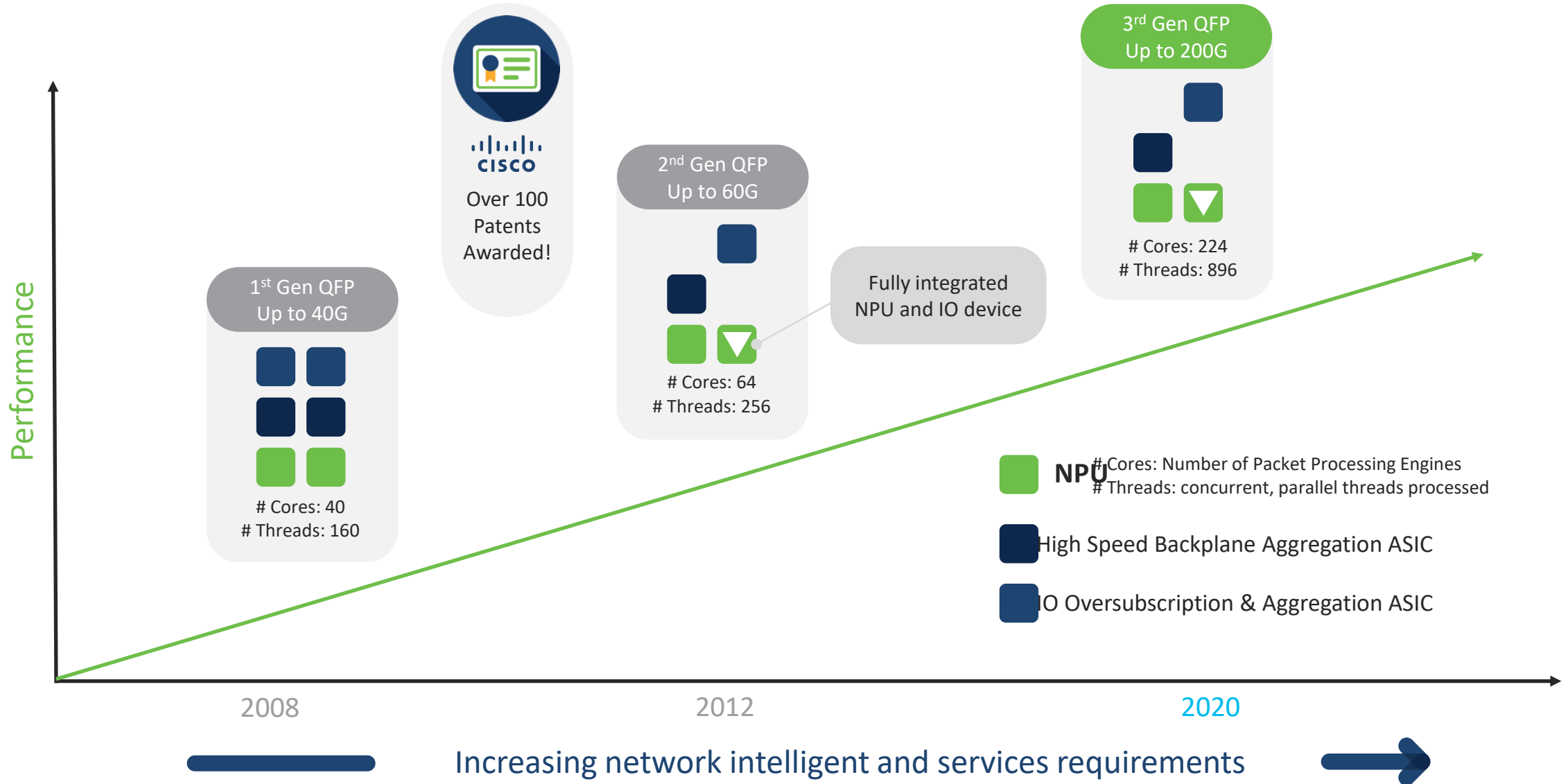


ASICs are a Pillar of Cisco Innovation...



Cisco Enterprise Routing ASIC Leadership

Continuing Investment in Network Processor Technology





Third Generation QFP Architecture

Multicore Architecture

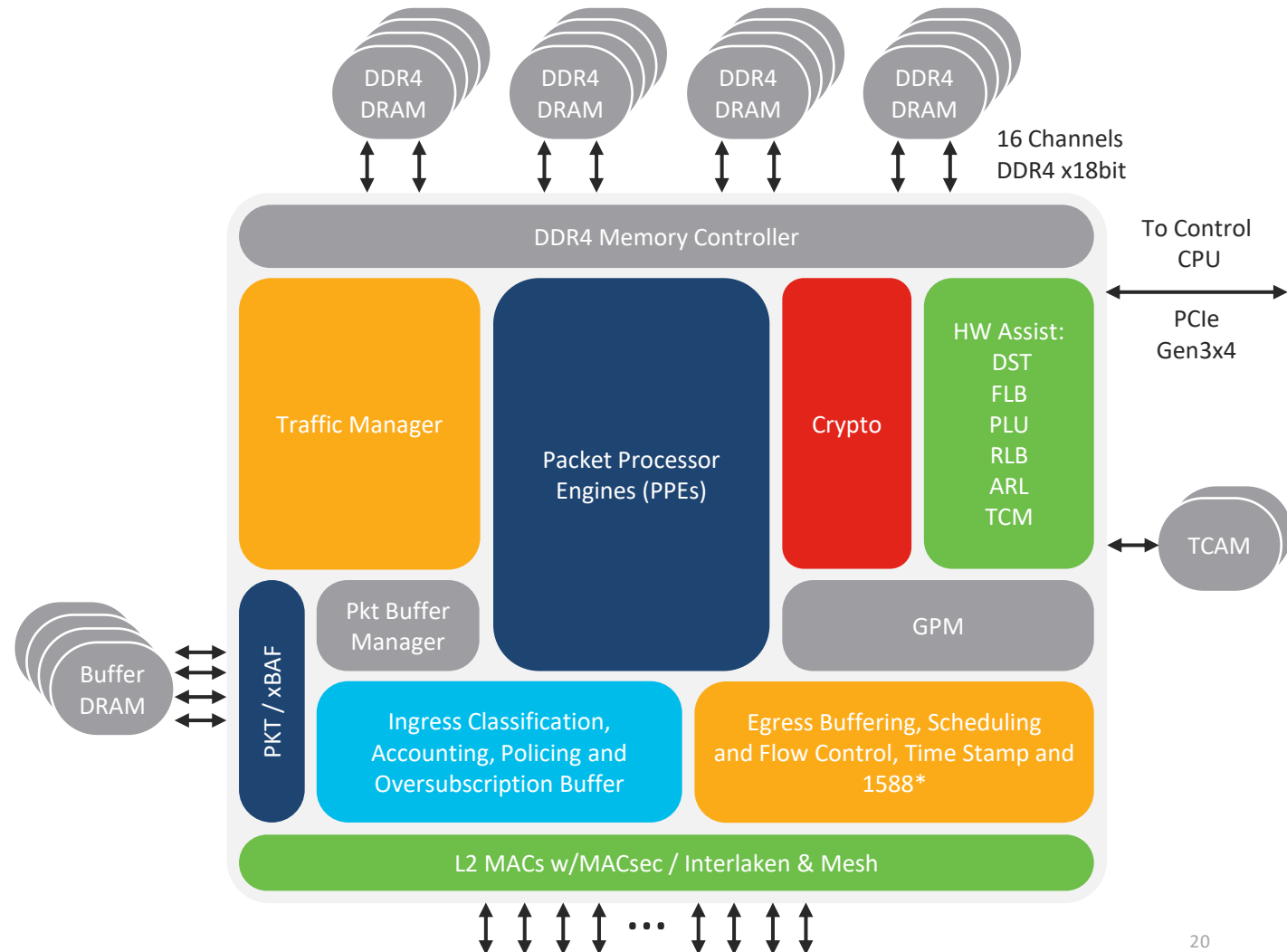
- 28 clusters of 8 PPEs @ 1GHz
- 224 PPEs with 4 threads each = 896 threads

Specialized Hardware Assist

- High Speed Crypto – Inline execution
- Flow queues for complex stateful features

Memory

- 32GB DDR4 Resource memory
- 3 to 4 Billion accesses per second
- 8x increase in Memory for feature scale
- 1.5GB Packet Buffer





Third Generation QFP Features

Traffic Manager

- 256K useable queues
- 134K scheduling nodes
- Event driven flow control

Layer 2 Sub-system



- 240Gbps Aggregation
- Per Port L2/L3 classification
- Line rate WAN MACsec

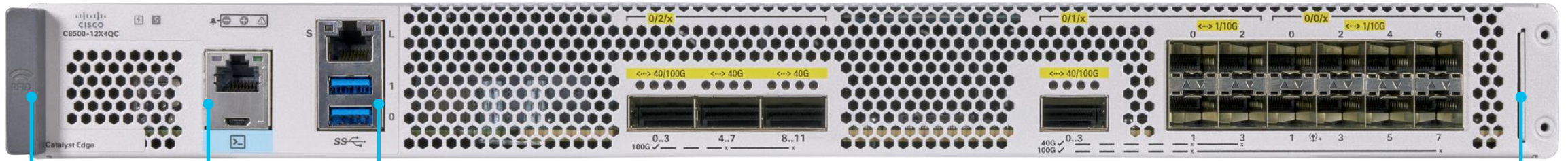
Inline Crypto



- Higher IPsec throughput
- 16 Crypto Engines
- Next Generation Strong Encryption: Suite-B

Catalyst 8500 Front View

C8500-12X4QC

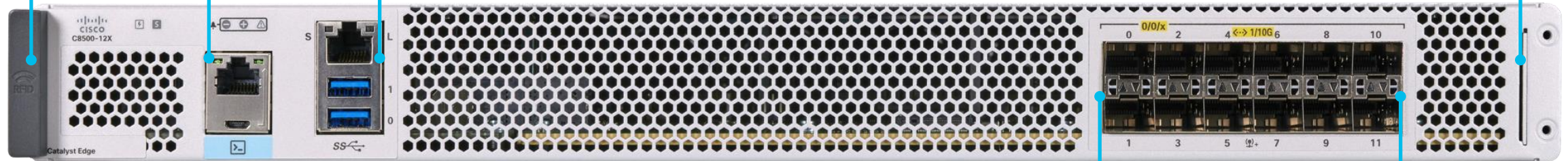


RFID Tag

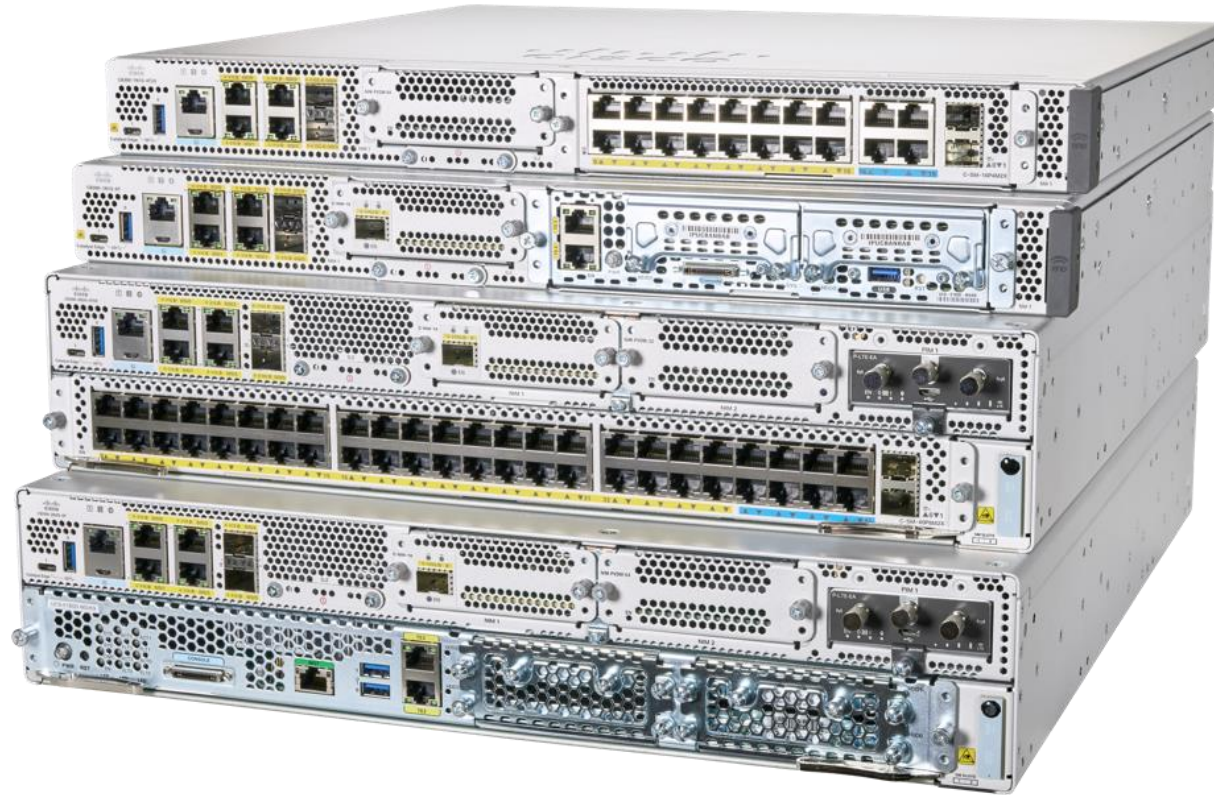
RJ45 and Micro USB
Console
Mgmt Ethernet
& USB 3.0

Label Tray

C8500-12X



Built-in I/O



Catalyst 8300

Cisco Catalyst 8300 Series Edge Platforms

Foundation for the Secure Cloud Scale SD-WAN Branch



Integrated Rich Services

Voice Survivability, Forward Error Correction and Packet Duplication, TCP Optimization

Edge Intelligence

Compute
Container based Apps



Scale

Up to 5x IPSec and IP CEF Performance
Core Availability for 3-4x
Services Performance

Multi-Layer Security

SSL Acceleration
Application Firewall
IPS/IDS, URL Filtering
AMP, Threatgrid

System

Cisco Catalyst 8300 Series Edge Platforms



Connectivity

Higher WAN Port density

Default 8G DRAM

10GE w/ MACSec

Pluggable NVMe Storage

5G Ready

Manageability

vManage

Multi-tenant

Open APIs

Analytics

Cisco Catalyst 8300 Series Edge Platforms

Introducing 10G in Access with higher port density

10G

C8300-2N2S-4T2X



C8300-1N1S-4T2X



4 RJ45
2 SFP+

1G

C8300-2N2S-6T



C8300-1N1S-6T

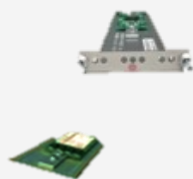


4 RJ45
2 SFP

NVMe
Storage

UADP-based switch
modules/10G WAN module

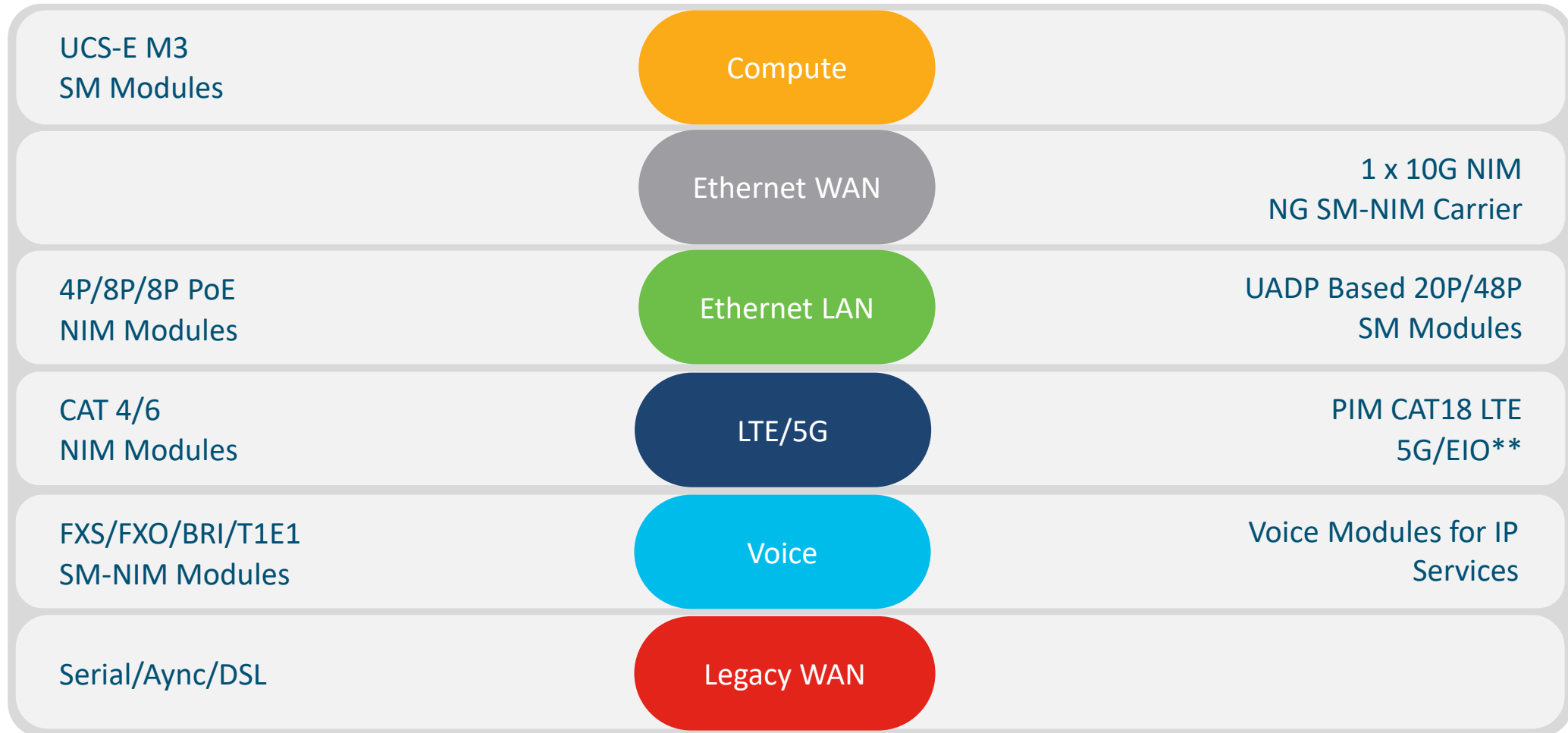
Higher-efficiency AC
and DC power supplies



Catalyst 8300 Module Innovation and Compatibility

ISR 4400 Modules Supported*

New Modules



*ISR 4K Modules Not Supported: UCS-E M1/M2, Ethernet SM, Ethernet WAN, SM-NIM Carrier

**5G Roadmap

C8300 Supported Modules



LAN

NIM-ES2-8
NIM-ES2-8-P
C-SM-40G8M2X
C-SM-16G4M2X

WAN

C-NIM-1X
NIM-1T
NIM-2T
NIM-4T
SM-X-1T3/E3*
NIM-2BRI-S/T*
NIM-4BRI-S/T*

WAN + Voice:

NIM-1MFT-T1/E1***
NIM-2MFT-T1/E1***
NIM-4MFT-T1/E1***
NIM-8MFT-T1/E1***
NIM-1CE1T1-PRI*
NIM-2CE1T1-PRI*
NIM-8CE1T1-PRI*

LTE

NIM-LTEA-EA
NIM-LTEA-LA
P-LTE-VZ
P-LTE-NA
P-LTE-US
P-LTE-JN
P-LTE-GB
P-LTE-IN
P-LTE-AU
P-LTEA-EA
P-LTEA-LA
P-LTEAA-EA
P-LTEAP18-GL
CAT 18 CGW*
5G sub 6GHz CGW*
5G (MMWave & Sub 6GHz) CGW **
5G sub 6GHz PIM **

Voice

SM-X-PVDM-3000
SM-X-PVDM-2000
SM-X-PVDM-1000
SM-X-PVDM-500
SM-X-24FXS/4FXO
SM-X-16FXS/2FXO
SM-X-8FXS/12FXO
SM-X-72FXS
NIM-2FXSP
NIM-4FXSP
NIM-2FXS/4FXOP
NIM-2FXO
NIM-4FXO
NIM-4E/M*
NIM-2BRI-NT/TE*
NIM-4BRI-NT/TE*
NIM-PVDM-32
NIM-PVDM-64
NIM-PVDM-128
NIM-PVDM-256

DSL

NIM-VAB-A
NIM-VA-B
NIM-VAB-M

Storage

SSD-M2NVME-600G
M2USB-16G
M2USB-32G

Async

NIM-16A
NIM-24A
SM-X-64A

ADAPTOR

C-SM-NIM-ADPT

UCS-E

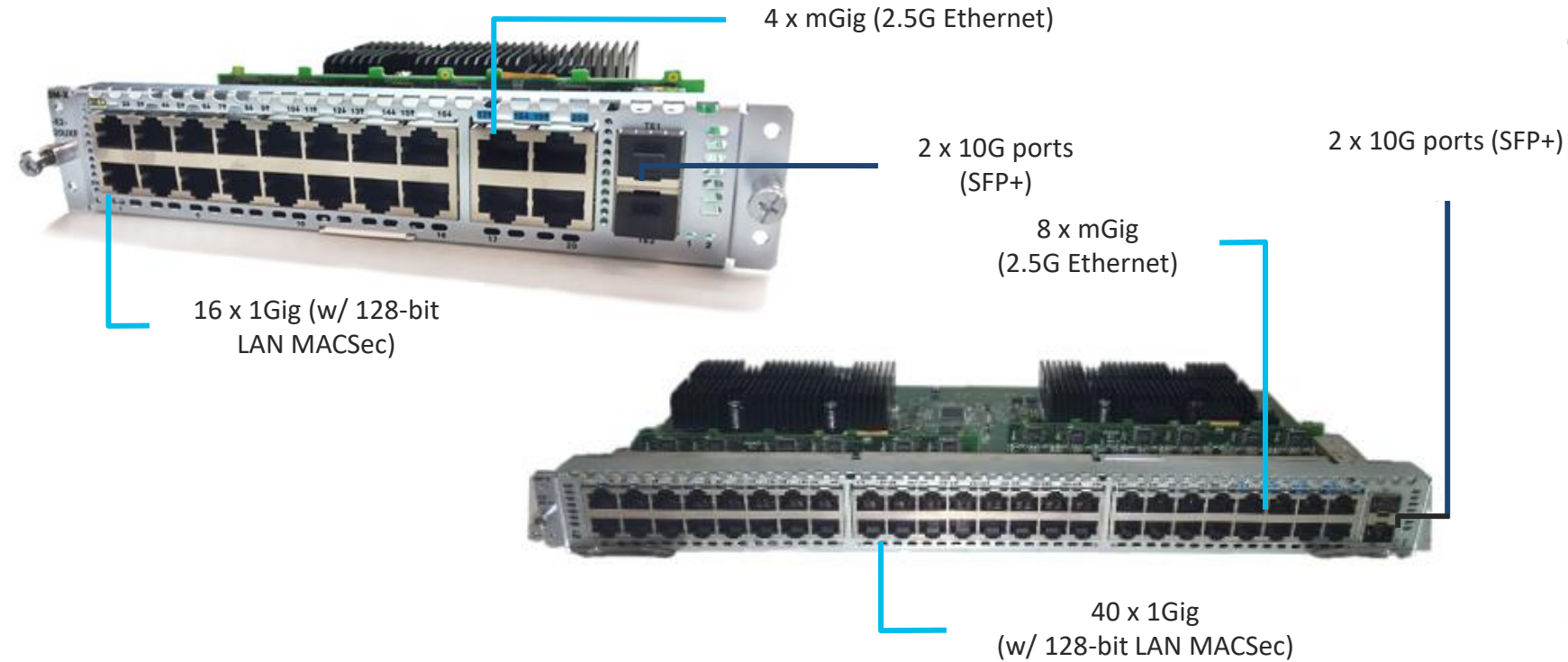
UCS-E160S-M3/K9
UCS-E1120D-M3/k9
UCS-E180D-M3/K9

* SD-WAN Support in Roadmap

** SD-WAN & IOS-XE Support in Roadmap

*** Required PVDM4 card for Voice

Catalyst 8300 Layer 2 Switch Module



- ### L2 Switch Module
- 1 Layer 2 Features compatible with Cat switch
 - 2 LAN MACSec for switch to host communication
 - 3 2.5 mGig to connect to future Access Point/ 5G
 - 4 Support for SDWAN features
 - 5 UPoE Capable



Port Speed and Diversity
(1G, 2.5G mGig, 10G Fiber)



LAN MACSec
(128-bit/ 256-bit***)

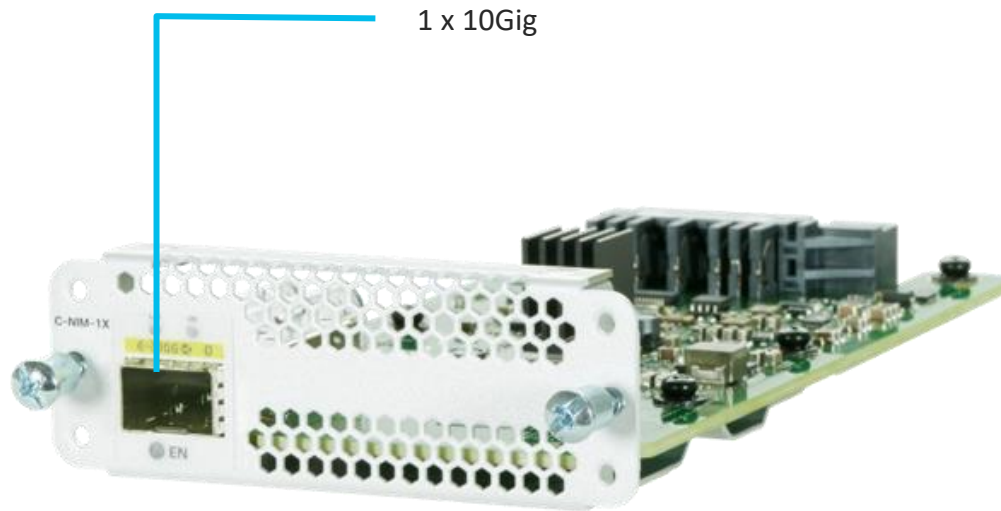


Power Over Ethernet
(PoE/ PoE+/ UPOE)



Cisco UADP ASIC
(UADP 2.0)

Catalyst 8300 10G WAN NIM Module



L3 10G WAN Module

- 1 Layer 3 Features compatible w/ Router FPGE
- 2 WAN MACSec for Secure WAN and Metro Ethernet links
- 3 SDWAN support



Port Speed and Diversity
(10G Fiber)



WAN MACSec
(256-bit)

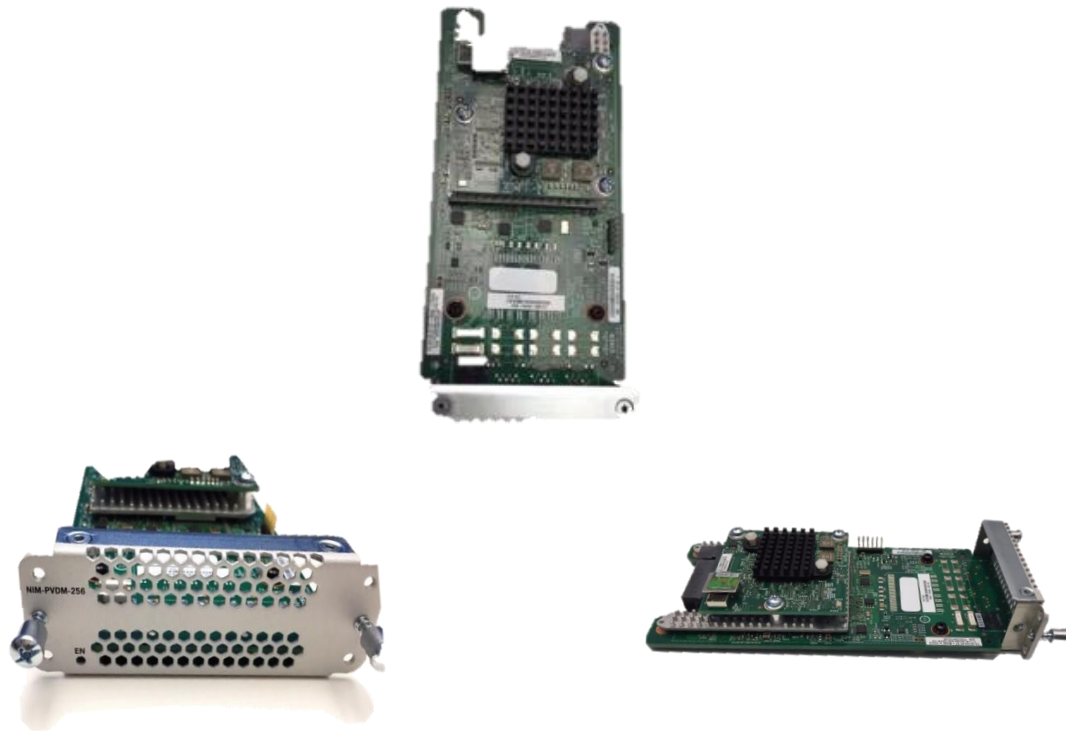


Higher Performance



SD Managed

Catalyst 8300 DSP Voice NIM Modules



Low-medium complexity deployments

4 different NIMs to support 32,64,128,256 voice channels

IP based voice services like transcoding and conferencing

Can be paired with service modules for DSP farm capability

Supports wide range of codecs for different complexities

Compatible with ISR4461 and Next Generation Platforms

Optimized for rich-media voice applications

Catalyst 8300 CAT18 PIM

CAT 18 LTE

Dual Micro SIM

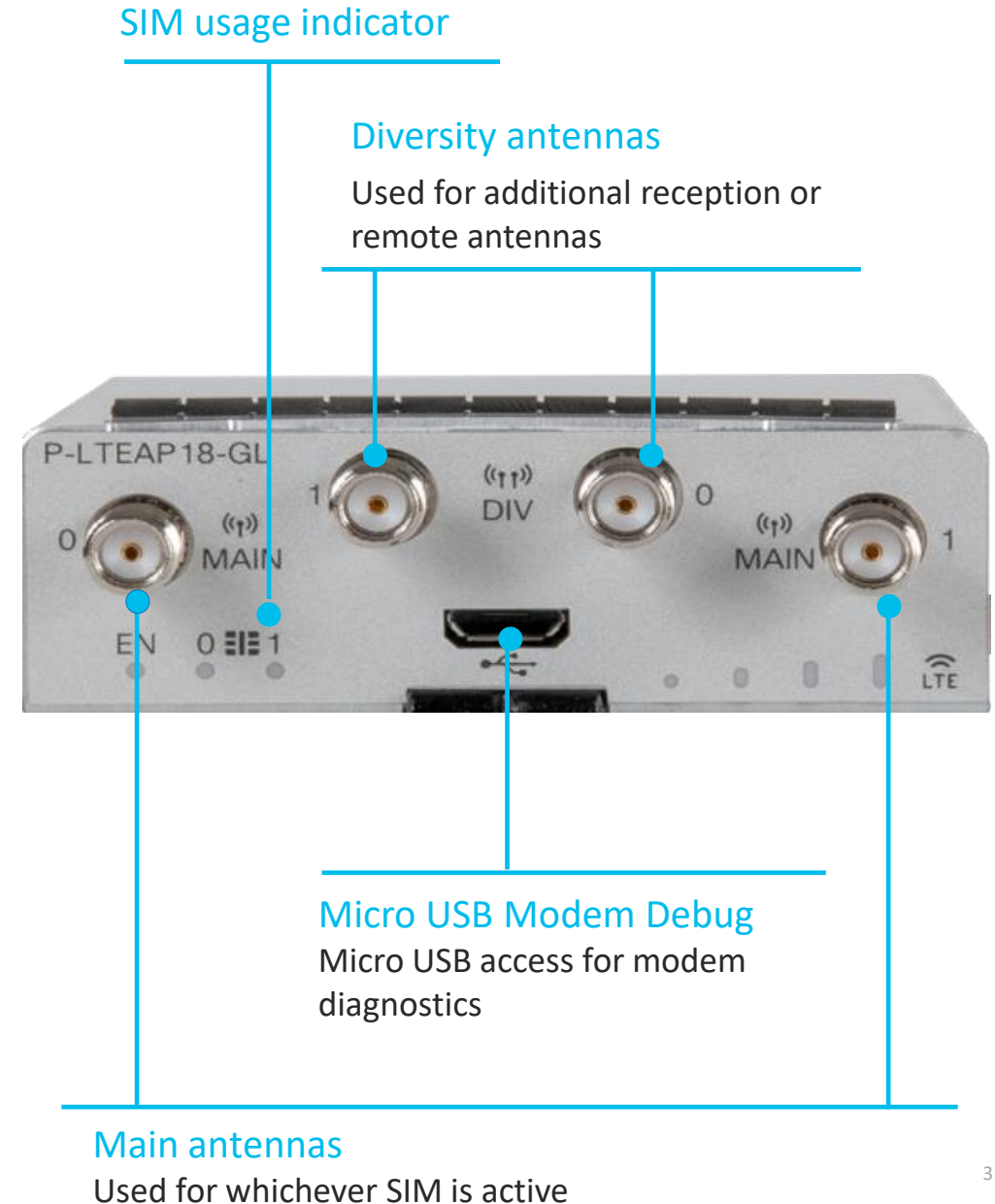
1200/200 Mbps

Supported on
ISR1120 and
ISR1160 & **C8300**

SD-WAN support

PID	Mode m	Regio n	LTE Bands
PLTEAP 18-GL	Telit Wireless	Global	1, 2, 3, 4, 5, 7, 8, 12, 13, 14*, 17, 18, 19, 20, 25, 26, 28, 29, 30, 32, 38, 39, 40, 41, 42, 43, 46, 48, 66, 71

*Support for LTE band dedicated for use by emergency services



Cisco Catalyst Cellular Gateway

Flexibility & Simplicity Redefined for Multi-Gigabit Wireless WAN

Giga-Bit Class Cellular

LTE/Cat18 Speeds
Dual SIM

SD-WAN Ready

Automation, Assurance
API Support



Secure by Design

Trustworthy Systems
Failure Recovery

Operational Resiliency

Out-of-band management
IP Passthrough using Single PDN

High-speed Failover or Primary
Cellular WAN

Precision Placement for Better
Coverage

PoE or External
Power Source

Catalyst 8300 2RU Front View

2 NIM and 2 SM

Status and physical security

- Status LED
- FAN LED
- Power LED

Storage

NVMe M.2 (16/32/600G)

Inventory

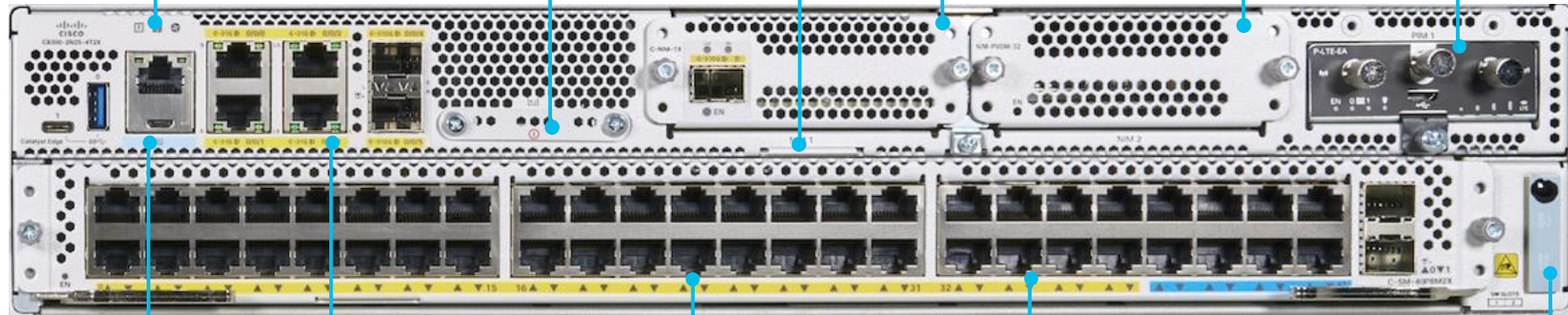
QR label tray

Network Modules

NIM slot

LTE WAN (PIM slot)

CAT 4/6/18 PIM



Management Interface

- RJ45 Console
- Micro-USB
- USB Type A

Data Interfaces (FPGE)

- 4 RJ45 GE WAN
- 2 SFP+ WAN

Network Modules

SM-X slot

Inventory

RFID

C8300-2N2S-6T has in-built 2 SFP
C8300-2N2S-4T2X has in-built 2 SFP+

Catalyst 8300 1RU Front View

1 NIM and 1 SM

Status and physical security

Status LED
FAN LED
Power LED

Network Modules

NIM slot
SM-X slot



Management Interface

RJ45 Console
Micro-USB
USB Type A

Data Interfaces (FPGE)

4 RJ45 GE WAN
2 SFP+ WAN

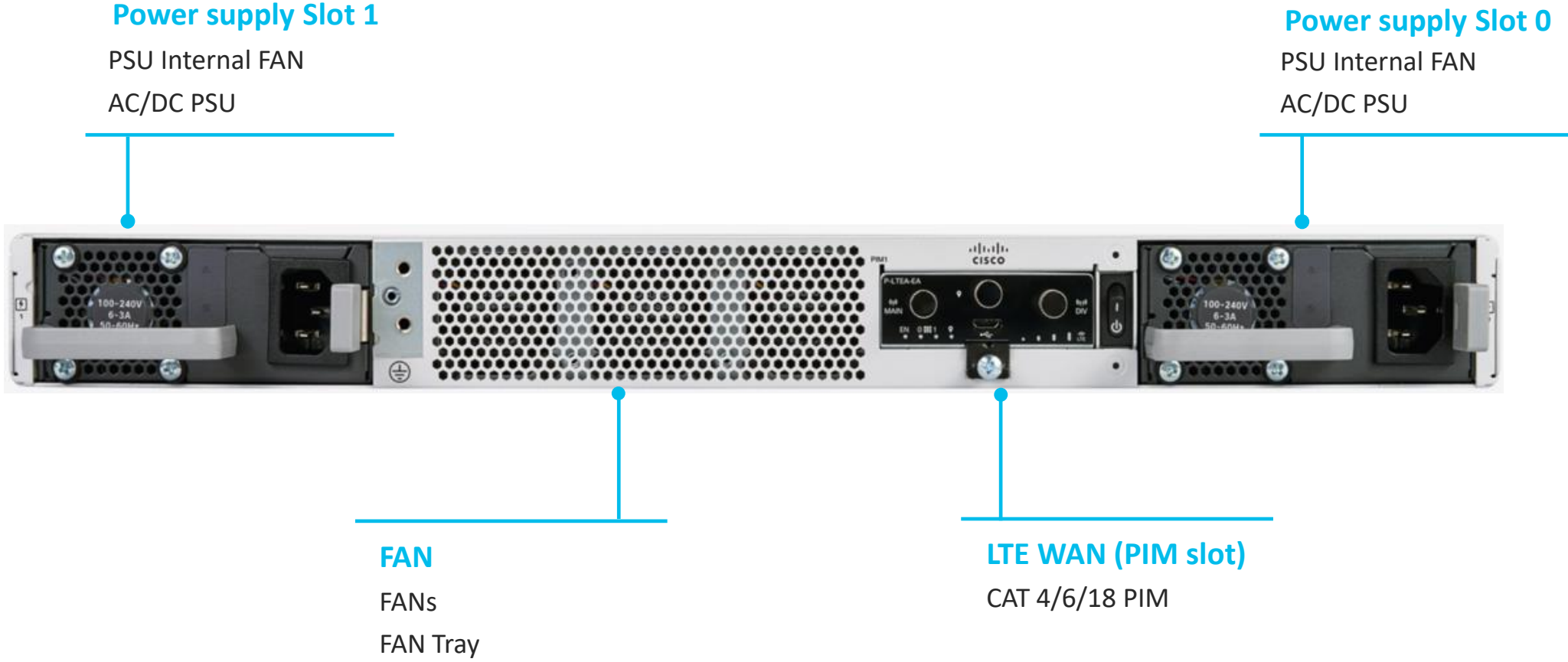
Storage

NVMe M.2 (16/32/600G)

Inventory

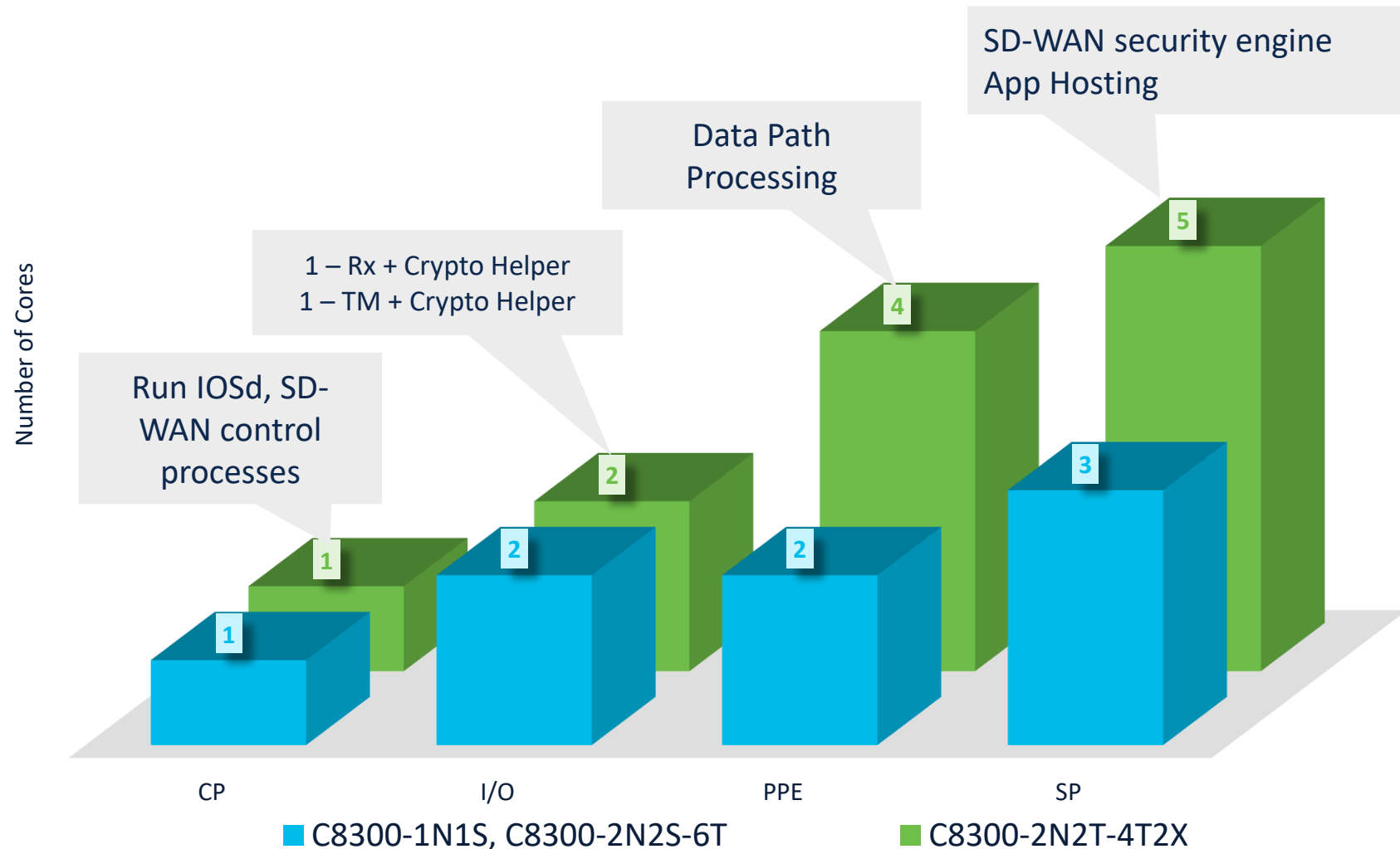
RFID
QR Label tray

Catalyst 8300 1RU Rear View



Catalyst 8300 Built for Service Optimization

CPU Core Allocation



Cisco Catalyst 8000V Edge Software

Enterprise-class Networking and Security with Flexibility of a x86 Based VNF

Multi-Services Support

Feature-rich IOS-XE and XE-SDWAN software
Supported features such as NAT, Firewall, NBAR QoS, etc.
Runs on any x86 VM platform

Cloud Integration

Extends connectivity, visibility, security into public and private clouds
Auto-Scaling capability
Integration with Azure vWAN and AWS TGW
Supports wide variety of cloud instances



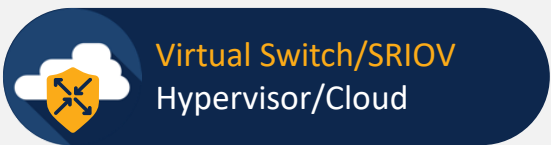
Performance Elasticity

CPU Hypervisors: 1 – 8 vCPU
Cloud Providers: 1- 16 vCPUs
Memory Scale: 4 – 16Gb

Multi-Layer Security

Secure object storage
High Throughput IPsec
IPS/IDS, URL Filtering

C8Kv



Virtual Switch/SRIOV
Hypervisor/Cloud

Highlights

Up to 10
Gbps IPSEC
in cloud

ENCS NIM
support

TGW and
vWAN
integration

DPDK IO

SDWAN
in AWS,
Azure,
and GCP

Manageability

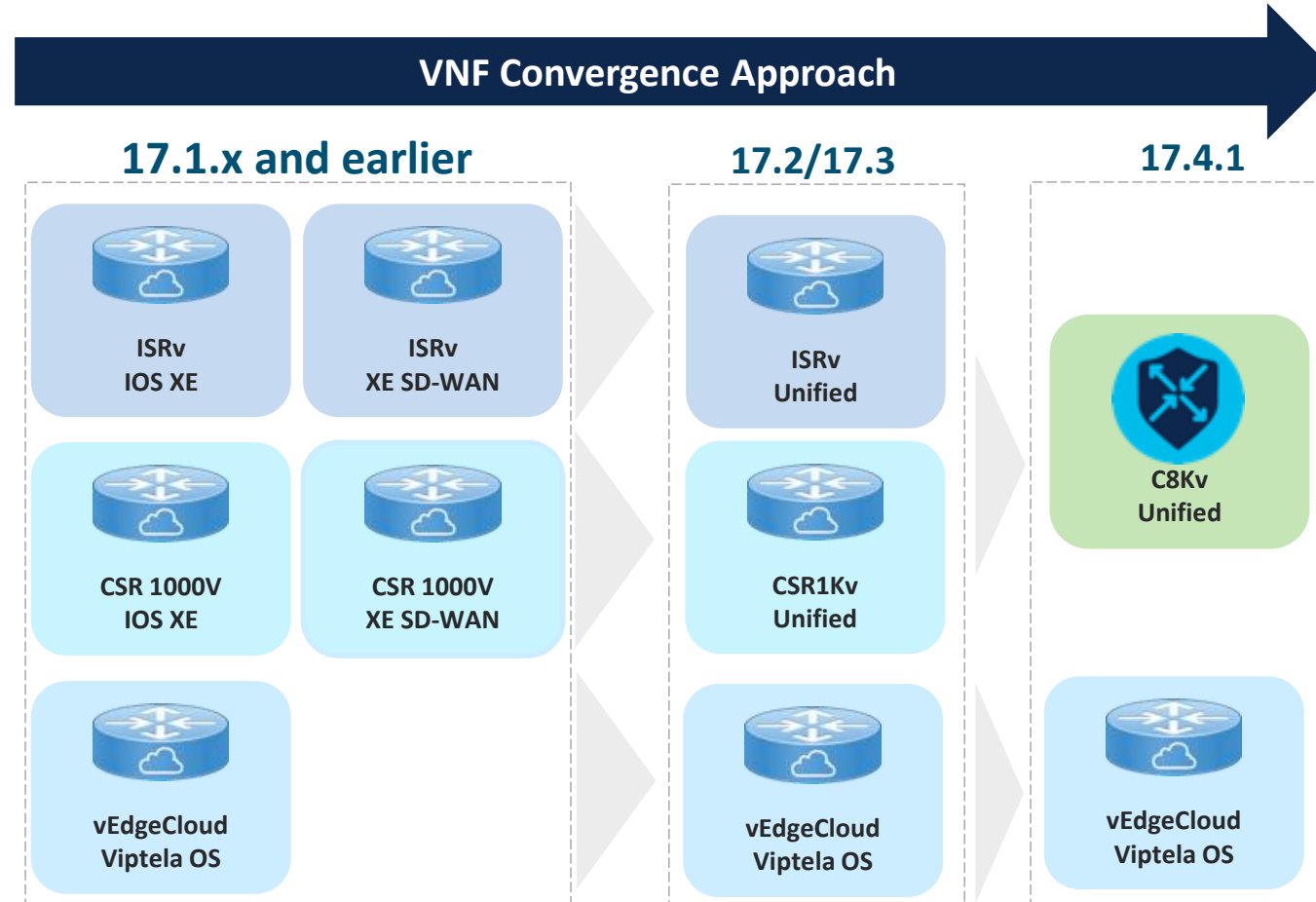
vManage

Multi-tenant

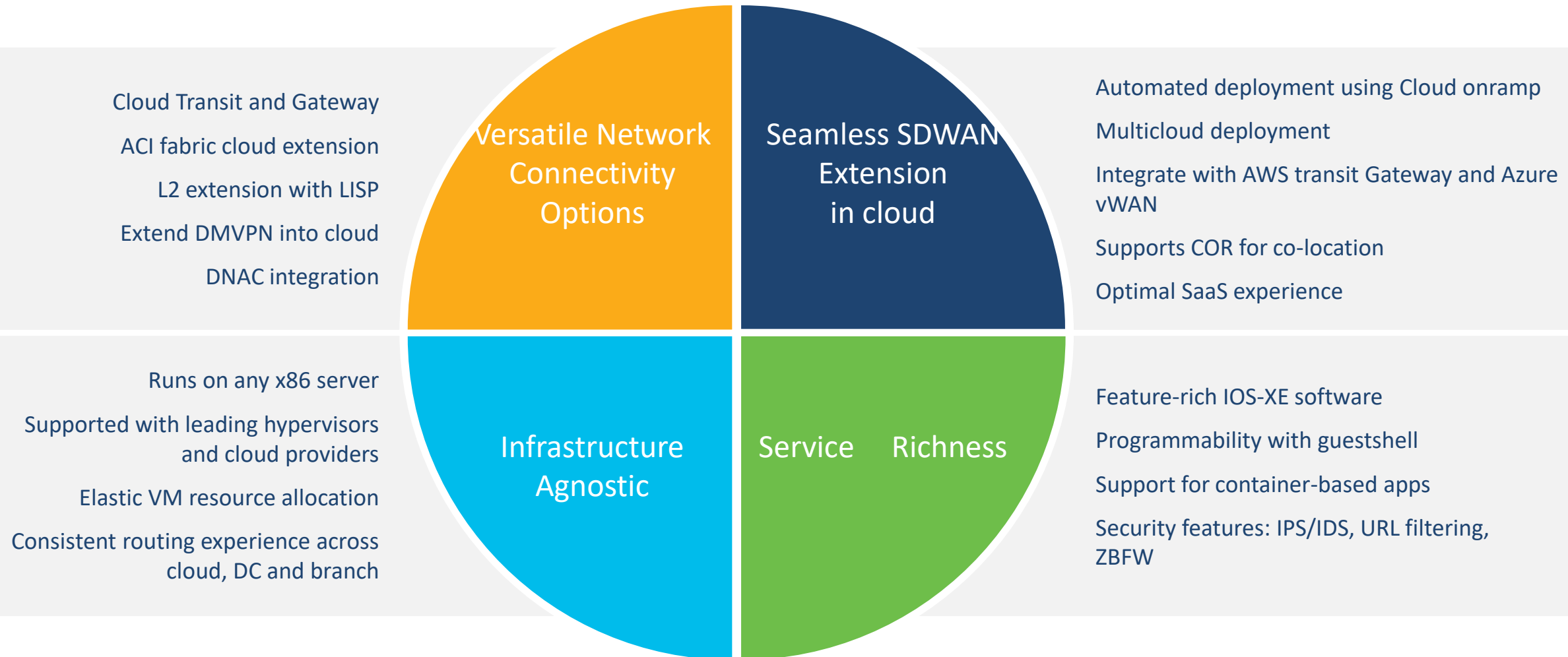
Open APIs

Analytics

Virtual Router Convergence



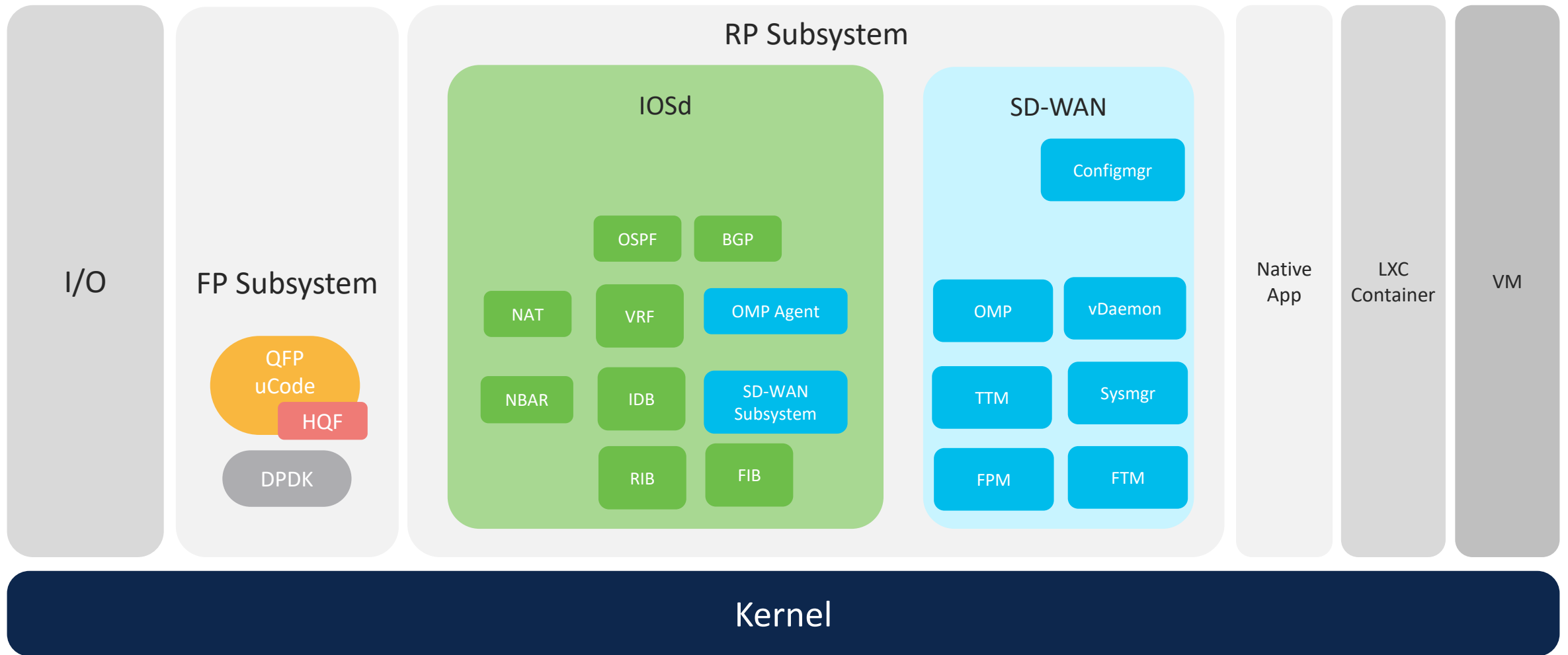
Cisco Catalyst 8000V Scalable Architecture



Open IOS XE Architecture

IOS XE Software Architecture

Seamless SD-WAN integration



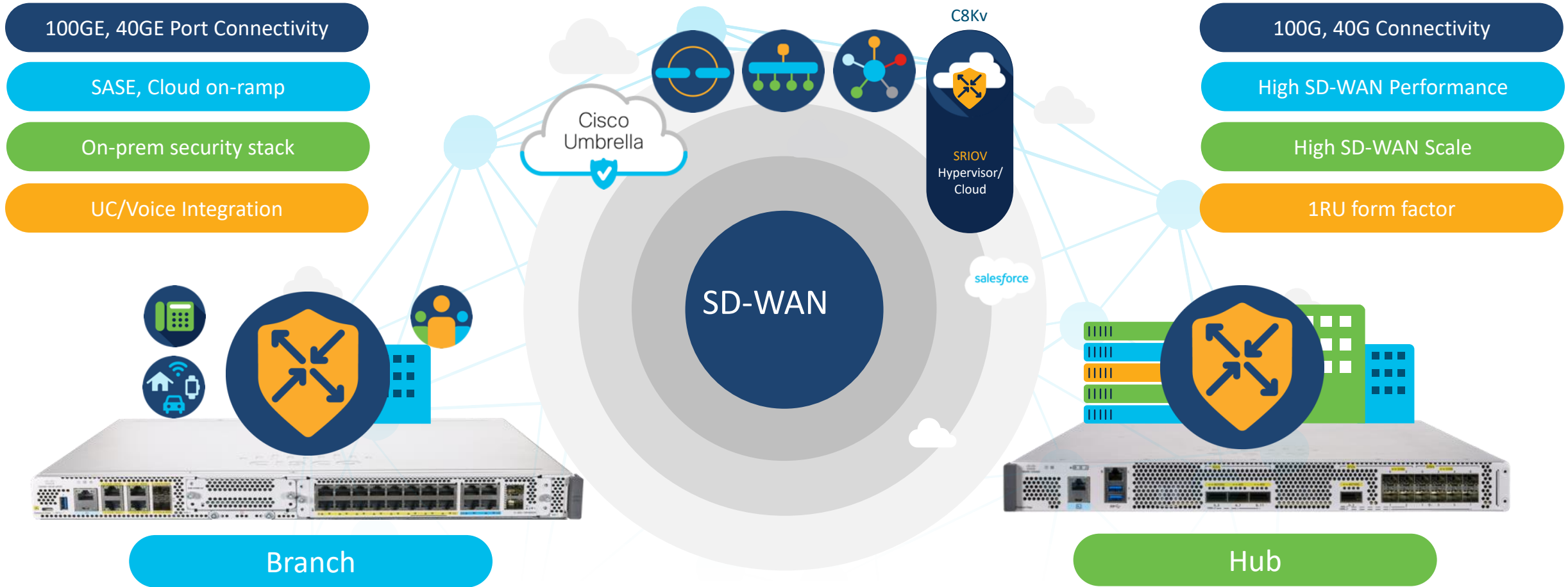
Easy Operations with Single Image



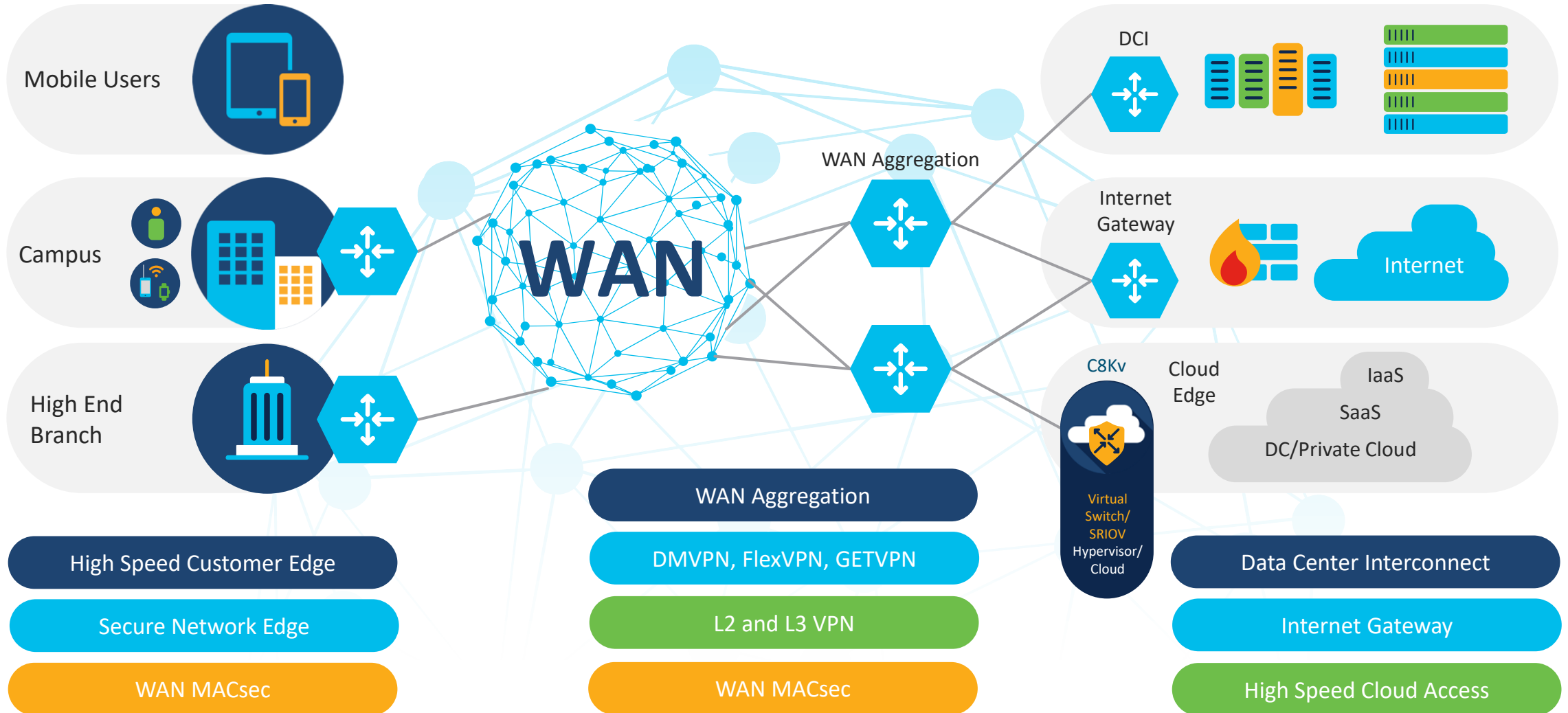
Accelerate SD-WAN Journey | Simplify Deployments | Cloud-scale Application Support

Solution and Use Cases

SD-WAN Hub, Branch and Cloud



Enterprise Applications



Closing

Cisco Catalyst 8000 Edge Platforms Family

High Performance SD-WAN Headend, Intelligent Branch and Agile Cloud Edge



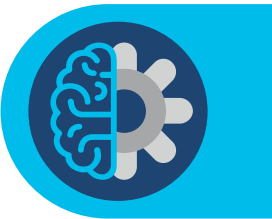
Ready for the Agile Cloud Journey

- High Speed Cloud Access
- Multi-Cloud Application Optimization
- Compact, Powerful 1RU/2RU



Ready for 5G, Edge Compute

- QFP and x86 higher performance
- SASE driven Feature Innovations
- Full-stack on-premise security



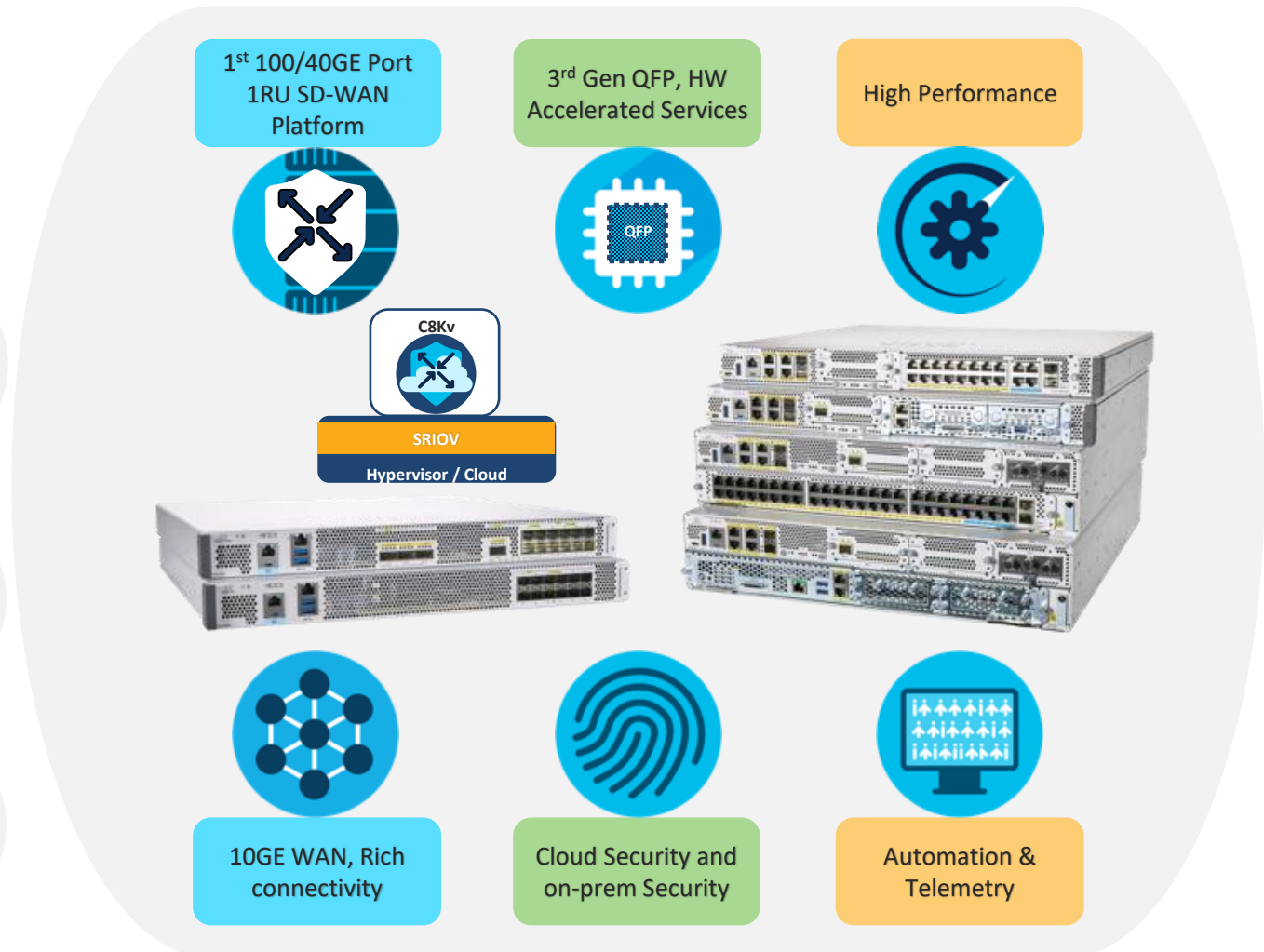
Ready for Edge Intelligence

- Headend 100/40/10/1GE Port flexibility
- Branch for 10/1G WAN, LTE, DSL, PoE+



Equipped with User Centric Design

- Operational Ease for better Tracing
- Passive Radio Frequency ID
- Easy Access Label Tray
- Field Upgradable Options



Cisco Catalyst 8000 Edge Platforms DNA Licensing Detail

NEW

Cisco DNA Essentials

Connectivity/Mgmt

- Cloud or On-Prem Management
- Flexible Topology
 - Hub and Spoke
 - Full Mesh/Partial Mesh
- App and SLA based policy
- Dynamic Routing (BGP, OSPF)
- VNF Lifecycle Management

Security

- Enterprise Firewall with Talos-powered IPS and application controls
- Cisco Umbrella DNS Monitoring (visibility only)

SD-WAN Services

- Basic Path optimization with FEC and Packet Duplication
- TCP Optimization

Cisco DNA Advantage

Cloud/Analytics

- Cloud OnRamp for IaaS and SaaS
- Automated Service Stitching
- Encrypted Traffic Analytics
- vAnalytics

Security

- Segmentation (Unlimited VPNs)
- Cisco AMP and SSL proxy
- URL filtering
- Cisco Umbrella app discovery

X-domain Innovations

- Integrated Border for Campus (SD-Access)
- Integration with ACI for Application SLA

Services

- Web Caching, DRE (incl. SSL proxy)
- Voice Module and SRST Integration
- Multicast

Cisco DNA Essentials

Cisco DNA Premier

Security

Cisco Umbrella SIG Essentials

Transactional

- Tier 0: 25 Licenses
- Tier 1: 40 Licenses
- Tier 2: 100 Licenses
- Tier 3: 285 Licenses

Enterprise Agreement

- Tier 0: Not Available in Premier
- Tier 1: 45 Licenses
- Tier 2: 110 Licenses
- Tier 3: 325 Licenses
- Additional Cisco Umbrella SIG Essentials licenses can be purchased separately.

Cisco Threat Grid

- Provides entitlement for 200 files per day per customer account
- Files sent to Threat Grid cloud for sandboxing. On-premises Threat Grid not available in Premier
- Global entitlement across all customer sites
- Additional Cisco Threat Grid licenses can be purchased separately.

Cisco DNA Advantage

Cisco DNA Essentials

Cisco Catalyst 8000 Edge Platforms Licensing

Network Stack Capabilities



Network Essentials

Catalyst 8300 only

Network Essentials

Perpetual

Routing Essentials: Routing Protocols, Vrf-lite, Multicast, NAT

Security: MACSEC-128, VPNs, ZBFW, PKI, ACLs, Umbrella Connector, Snort IPS

Application Experience: HQOS, PfR, PBR, AVC, NBAR, IPSLA, FnF

Unified Communication: Cube Connector

Router Management: TACACS+, NETCONF, AAA, DNS, DHCP

With DNA Essentials



Network Advantage

Network Advantage
(Inclusive of Essentials)

Perpetual

Overlay Technologies: MPLS, VPLS, LISP, VXLAN, OTV, EVC, OAM

Security: MACSEC-256, ALG for ZBFW, VASI

Cisco Innovation: SMU Patching, SGTs, ETA, ISSU, mDNS Bonjour, EPC

Unified Communication: SRST, Support for Voice Modules

WAN Optimization: Cisco WAAS RTU*

*Available on UCS-E on C8300

With DNA Advantage and DNA Premier