

**G S A
G U E S T
S E A T I N G**



All items are under GSA SIN 33721 unless noted

2 0 2 1



| | | | |
|--|---|--|---|
| Mailing Address: HBF PO Box 8 Hickory NC 28603-0008 | Shipping Address: HBF 900 - 12th Street Drive NW Hickory NC 28601-4763 | Contact: Phone: 1.855.HBF.2020 828.328.2064 Fax: 828.485.2690 Info: hbfservice@hbf.com www.hbf.com | Order Processing: Phone: 1.855.HBF.2020 828.328.2064 Fax: 828.485.2690 hbforders@hbf.com |
|--|---|--|---|

| GENERAL INFORMATION | PAGE |
|---|-------------|
| ANSI/BIFMA e3-2014e Furniture Sustainability..... | 5 |
| COM/COL Ordering Requirements | 3 |
| Combinations of Upholstery Applications | 4 |
| Dimension Guide | 5 |
| GSA | 6 |
| HBF Textiles Graded Product | 23 |
| High Performance Products | 6 |
| Product Material Options | 17 |
| Quick Ship Program | 7 |
| SCS Indoor Advantage™ Gold Certified..... | 5 |
| Seating Ordering Procedure | 2 |
| Special Code Compliance – CAL 117..... | 4 |
| Special Code Compliance – CAL 133..... | 4 |
| Spring Down Cushions..... | 6 |
| Veneer Options..... | 6 |
| Yardage Requirements..... | 2 |
| | |
| GUEST/DINING | |
| Andaz..... | 24 |
| Brentwood | 32 |
| Carlyle..... | 33 |
| Corfino | 35 |
| Essens..... | 36 |
| Gubi® Beetle..... | 41 |
| Karina | 44 |
| Nest | 45 |
| November | 48 |
| Ski..... | 50 |
| Social | 51 |



Coverings

All upholstered items may be ordered using HBF Textiles, HBF Leathers, or coverings provided by the customer. Prices listed as COM refer to Customer's Own Material. Prices listed as COL refer to Customer's Own Leather. Prices listed as GRADE refer to HBF Textiles and/or HBF Leather.

Yardage requirements shown in the price list are based on non-directional 54" wide material. The following conversion chart should be used to determine yardage requirements when COM is 54" wide or less and/or has a repeat of 2" or more. Add together the vertical and horizontal repeat to determine which column should be used as a reference.

| Fabric Width | Plain Fabric | 2"-10" Repeat | 11"-20" Repeat | 21"-25" Repeat | 26"-30" Repeat | 31"-35" Repeat | 36"-40" Repeat | 41"-45" Repeat |
|---------------|--------------|---------------|----------------|----------------|----------------|----------------|----------------|----------------|
| 54" | + 0% | +10% | +15% | +20% | +25% | +30% | +35% | +40% |
| 51"-53" | 15% | 20% | 25% | 30% | 35% | 40% | 45% | 50% |
| 48"-50" | 30% | 35% | 40% | 45% | 50% | 55% | 60% | 65% |
| 45"-47" | 45% | 50% | 55% | 60% | 65% | 70% | 75% | 80% |
| 36"-44" | 60% | 65% | 70% | 75% | 80% | 85% | 90% | 95% |

To determine the possibility of reduced yardage requirements for orders of thirty (30) or more units, please contact The HBF Client Experience Team. HBF reserves the right to request additional yardage of COM/COL at customer expense based on repeat and/or pattern size, and number of rolls.

All COM/COLs must be approved for application before the purchase order is submitted to HBF. Please contact The HBF Client Experience Team at hbfservice@hbf.com to verify that your COM/COL fabric has been approved. If it has not, please request COM/COL approval testing via www.hbf.com under COM/COL Request. Failure to submit a COM/COL for testing may result in additional expenses or rejection of COM/COL. For any repeat and/or pattern size not listed, please contact The HBF Client Experience Team for a yardage requirement quotation.

HBF cannot be held responsible for performance, color accuracy, or weaving of COM/COL materials. All responsibility for COM/COL shipments is between the purchaser and the textile source. HBF reserves the right to reject any COM or COL. HBF assumes no responsibility for suitability or wearability of COM/COL. Difficult COM/COL may be subject to additional charge if additional labor costs are incurred. HBF assumes no responsibility for the flame retardance of any COM. Customers are solely responsible for making sure that COM complies with all applicable codes and regulations. Orders specifying COM/COL will not be scheduled for production until all approved COM(s)/COL(s) are received by HBF. To ensure proper COM/COL expediting, please tag fabric/leather roll(s) with the following information: 1. Purchasing dealer name and purchase order number 2. HBF acknowledgement number, if available 3. Other pertinent information which will enable proper COM/COL identification.

When sending COL for use on one of our upholstered pieces, please send eighteen (18) square feet of leather for each yard of 54" plain fabric required for that item.



Coverings (Continued)

COM/COL ORDERING REQUIREMENTS:

Prior to acceptance of order specifying COM/COL, a memo sample must be submitted to HBF for determination of suitability. All COM's and COL's must be rolled separately, on individual tubes. Multiple fabrics rolled on the same tube will not be accepted.

For ease of expediting your COM/COL order, we require the following information:

- | | |
|---|------------------------------|
| 1. Fabric description | Shipping Address: HBF |
| 2. Fabric source | 900 12th Street Drive NW |
| 3. Order line, product name or number | Hickory, NC 28601-4763 |
| 4. Fabric color | |
| 5. A swatch of the covering | |
| 6. Special application instructions, if any | |

If COM/COL is of a type requiring choices of seam placement, face side, position of design or repeat; these instructions must be clearly stated on the original order.

HBF cannot be held responsible for performance, color accuracy, or weaving of COM materials. All responsibility for COM shipments is between the purchaser and the textile source.

HBF reserves the right to reject any COM or COL. HBF assumes no responsibility for suitability or wearability of COM/COL. Difficult COM/COL may be subject to additional charge if additional labor costs are incurred.

HBF assumes no responsibility for the flame retardance of any COM. Customers are solely responsible for making sure that COM complies with all applicable codes and regulations.

Orders specifying COM/COL will not be scheduled for production until all approved COM/COL is received by HBF.

To ensure proper COM/COL expediting, please tag fabric/leather with the following information:

1. Purchasing dealer name and purchase order number
2. HBF acknowledgement number, if available
3. Other pertinent information which will enable proper COM/COL identification



Combination of Upholstery Applications

All seating ordered with combination upholstery application (fabric, leather) that **is not** offered as standard is subject to a **\$103 List Upholstery upcharge** and will be entered and processed as a special model, in addition to the following pricing conditions:

1. Combinations using HBF Textiles and COM will be priced at the COM price. The cost of the portion of the HBF Textiles used, will be entered as a miscellaneous charge on the furniture order.
2. Combinations using HBF Textiles and HBF Leathers, or COM and HBF Leathers, will be priced at the appropriate Leather I-V price.
3. Combinations using HBF Textiles and COL, two COL's, or COM and COL, will be priced at the COL price. The cost of the portion of the HBF Textiles used, will be entered as a miscellaneous charge on the furniture order.
4. Combinations using two HBF Textiles will be invoiced at higher grade price.
5. When specifying combination of upholstery applications, a sketch indicating placement of textiles and direction of applications must accompany the purchase order.

Special Code Compliance

California #117-2013

Unless otherwise specified, foam used in all HBF seating products complies with these guidelines.

California #133

Following are the Net upcharges and minimum unit requirements for special construction to comply with these guidelines.

| | |
|---------------|---|
| Guest Chairs | \$113 Net per unit (minimum of two units) |
| Swivel Chairs | \$167 Net per unit (minimum of two units) |
| Lounge Chairs | \$233 Net per unit |
| Ottomans | \$113 Net per unit |
| LoveSeats | \$303 Net per unit |
| Sofas | \$352 Net per unit |
| Bench Seating | \$167 Net per unit (regardless of size) |

HBF can not be held liable if original purchase order does not indicate a requirement for California #133 compliance.

Boston Fire Code

New York Port Authority

Please contact HBF Customer Service if compliance is required for these special codes.

ANSI/BIFMA e3-2014e Furniture Sustainability Standard and LEVEL® Certification

A majority of HBF’s products have met the necessary qualifications to achieve LEVEL® certification. LEVEL® is the multi-attribute sustainability certification based on the ANSI/BIFMA e3 Furniture Sustainability Standard. The standard and certification were created to deliver the most open and transparent means of evaluating and communicating the environmental and social impacts of furniture products in the built environment. Taking into account a company’s social actions, energy usage, material selection and human and ecosystem health impacts, LEVEL® addresses how a product is sustainable from multiple perspectives. The organization, facilities, and products are audited on an annual basis to ensure ongoing compliance and improvement.

With LEVEL®, customers can make informed choices about sustainable commercial office furniture. The LEVEL® mark identifies that a product has been vetted by an independent third party certifier and its numeric marking of 1, 2, or 3 indicates the threshold of certification the product has achieved. A majority of HBF’s seating, occasional tables, and conference lines are LEVEL® certified. Please download the certificates from our product pages for the complete details. For more information about the ANSI/BIFMA LEVEL® standard, visit www.levelcertified.org.

ANSI/BIFMA Performance Standards

Our seating products meet or exceed ANSI/BIFMA weight performance standards of 275 lbs. (124.7 kg.) unless otherwise noted.

SCS Indoor Advantage™

All HBF seating products are SCS Indoor Advantage™ Gold Certified.

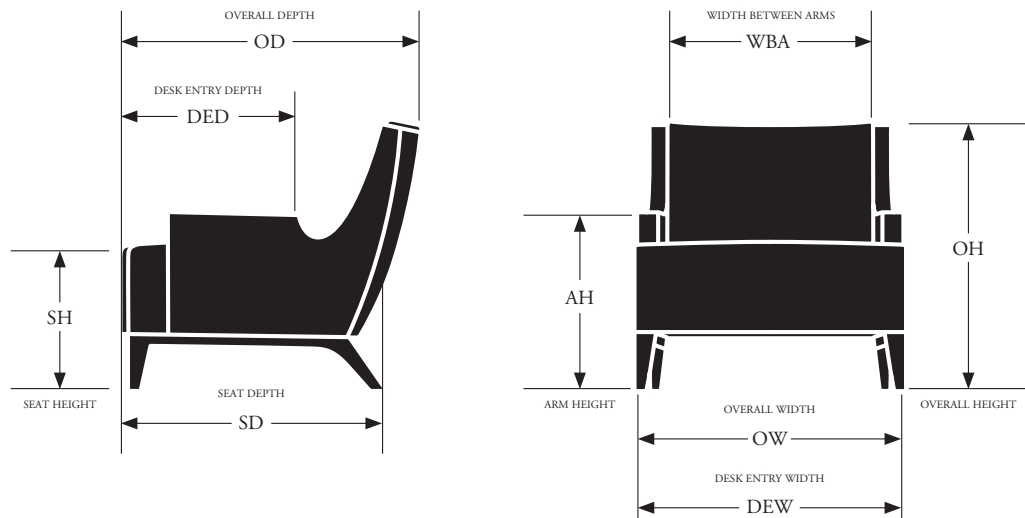
SCS Global Services (SCS), a reputable third-party certification and assessment body of environmental, sustainability and safety claims since 1984, has developed internationally recognized standards and certification programs to assist businesses with improving their environmental efforts, social accountability and product performance.

The advantages of holding SCS Indoor Air Quality certification are substantial: in addition to improving indoor working environments and meeting qualifications for the LEED-CI EQ 4.5 credit for office furniture as well as the BIFMA Standard for Low-Emitting Office Furniture Systems & Seating M-7.1, there is the added assurance of knowing that the company’s entire breadth of products is held to such rigorous standards.

For more information regarding SCS Indoor Advantage™, please visit: <http://www.scsglobalservices.com>.

Please contact the HBF Client Experience Team for pricing and lead time information.

Dimension Guide





GSA Contract Number Please refer to the GSA price list for pricing.
GS-28F 0020M

HBF High Performance Products HBF and HBF Textiles have long been leaders in contract furnishings and known for industry-leading product design coupled with the highest quality construction, comfort and aesthetic beauty.

Now these same principals are the cornerstones of HBF Healthcare high performance products. We have consulted with healthcare designers and clients to provide products and options for interiors that will provide quality sustainable design solutions for the future. These effective solutions will address the unique interactions required by any high-use facility. Visit www.hbf.com for additional high performance product information.

Seating Product High Performance Options:

- Guest and Lounge Seating
- Arm Caps
- Moisture Barrier
- Wipe Out - Clean Out
- Tandem Seating
- Wall Saver Legs
- Replaceable Components
- Upholstery Products from HBF Textiles

Spring Down Cushions Optional spring down cushions are available on most loose cushion HBF lounge seating. List upcharges are:

| | |
|----------|-------|
| Chair | \$108 |
| Loveseat | \$194 |
| Sofa | \$297 |

Veneer and Finishes Wood owes its inherent beauty to variations in color, grain, and texture; therefore, these variations are not considered defects. Due to the natural color and grain variances of wood substance the final finish color, texture and grain may vary from one furniture piece to another even though they are finished at the same time. Exposure to light and the aging process will cause changes in surface color of natural wood products. Light finishes on wood products do not mask the natural characteristics of wood. HBF does not guarantee the exact matching of grain, pattern and color.

An upcharge of **5% Net** COM per seating unit, with a minimum upcharge of **\$500 Net** per order, will apply for any custom wood finish.

Refer to the following page for product material options.



GUEST SEATING



Andaz
Ash
Polished Chrome
HGQ115-211



Andaz
Ash, Upholstered
Polished Chrome
HGQ115-221



Brentwood
Ash, Upholstered
HGB294-011



Carlyle
Ash, Upholstered
HGT115-081



Corfino
Open Arm
Satin Pewter
HGE214-201



Gubi Beetle
Black Powder Coat
HGG217-011



November
Ash, Armless
HGN113-101

LOUNGE SEATING



Brentwood
Ash
HLB294-011



Brentwood
Ash, X Button Back
HLB294-021



Conexus Mid Back
Fully Upholstered
Black Powder Coat
or Polished Stainless
HLV116-051



Conexus High Back
Fully Upholstered
Black Powder Coat
or Polished Stainless
HLV116-011



Dialogue
Black Powder Coat
or Satin Pewter
HLG306-011



Fulton
Black Powder Coat
or Polished Chrome
HLM417-021



MOD Lounge
All Finishes Available
Deep – HLS018-011
Standard – HLS018-061



MOD Ottoman
All Finishes Available
Deep – HHS018-021
Standard – HHS018-031



Perfect Pitch
Ash
HLL209-011



Salon
Open Wood Back
Walnut
HLN309-011



Scoop
Satin Pewter
HLP402-011



Trestle
Oak
HLR312-011



Triscape Pouf
HAK614-011



Westwood
Maple
HLU301-021

LOUNGE SEATING



Brentwood Loveseat
Ash
HLB294-012



Brentwood Loveseat
Ash, X Button Back
HLB294-022



Brentwood Sofa
Ash
HLB294-013



Brentwood Sofa
Ash, X Button Back
HLB294-023



Perfect Pitch Sofa
Ash
HLL209-013



Westwood Sofa
Maple
HLU301-013



STOOLS



Andaz
Low Back Counter Stool
Ash
Black Powder Coat or
Polished Chrome
HGQ115-241



Andaz
Mid Back Counter Stool
Ash
Black Powder Coat or
Polished Chrome
HGQ115-271



Andaz
Low Back Barstool
Ash
Black Powder Coat
Polished Chrome
HGQ115-301



Andaz
Mid Back Barstool
Ash
Black Powder Coat or
Polished Chrome
HGQ115-331



Carlyle
Upholstered Counter Stool
Brushed Aluminum Stretcher
HGT115-101



Carlyle
Upholstered Barstool
Brushed Aluminum
HGT115-121



Gubi Beetle
Counter Stool
Black Powder Coat
HGG217-041



Gubi Beetle
Barstool
Black Powder Coat
HGG217-071

CONFERENCE SEATING



Cadre Mid Back
Wrap Around Arm, Urethane Arm Cap Polished
Aluminum, 5 Prong Base, Double Wheel, Medium
Caster
HST201-031



Cadre High Back
Wrap Around Arm, Urethane Arm Cap Polished
Aluminum, 5 Prong Base, Double Wheel, Medium
Caster
HST201-041



Vela Mid Back
Black Powder Coat or Polished Aluminum
Double Wheel, Medium Caster
HSB718-021



Vela High Back
Black Powder Coat or Polished Aluminum
Double Wheel, Medium Caster
HSB718-011

OCCASIONAL TABLES



Frame
Side Table, Round
Ash
HTF50501R-2220



Frame
Coffee Table, Round
Ash
HTF50501R-1742



Link
Satellite Table
Ash or Solid Surface Top
All Base Finishes Available
HTS51801G-262020



LOGICmeet
Laptop Table
Maple
Satin Pewter
HTL60601R-2420



Slice
Side Table, Round
Top: Ash
HTS10501R-2224



Slice
Coffee Table, Round
Top: Ash
HTS10501R-1642



Slice
Coffee Table, Oval
Ash Top + Base
HTS10501V-165424



Triscape
Coffee Table
Ash
Polished Stainless Steel
HTK61401T-154746

EVERYDAY TEXTURES

Classic, textural staples with readily available inventory and targeted price points.

Everyday Textures from HBF Textiles is the go-to upholstery solution for Quick Ship. 64 fresh and sophisticated colors bring to life the hallmarks of HBF Textiles. In addition, this collection focuses on recycled materials, durability and cleanability, making it a comprehensive choice for HBF Quick Ship.

Blink – Grade A

* Bleach Cleanable



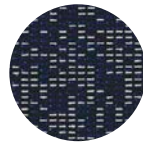
Lemon Yellow
1048-22



Red Orange
1048-44



Ocean Blue
1048-56



Bright Blue
1048-59



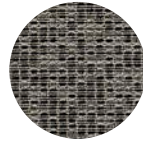
Sea Green
1048-67



Dark Violet
1048-77



Silvery
1048-80



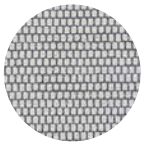
Dove Grey
1048-83



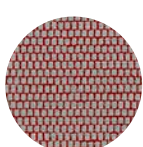
Pepper
1048-90

Walkabout – Grade A

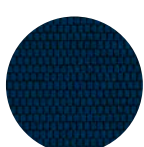
* Bleach Cleanable



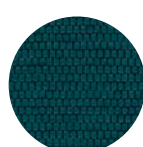
Wistful White
1046-11



Reliable Red
1046-44



Classic Cobalt
1046-55

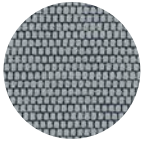


Alluring Aqua
1046-56

EVERYDAY TEXTURES

Walkabout – Grade A

* Bleach Cleanable



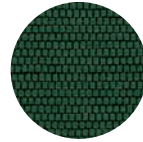
Noble Navy
1046-58



Bewitched Blue
1046-59



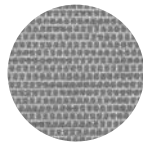
Jungly Jade
1046-64



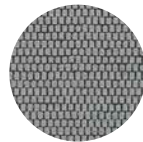
Gallant Green
1046-67



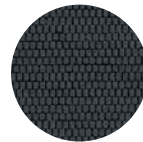
Bold Burgandy
1046-74



Swanky Silver
1046-80



Gusty Grey
1046-85



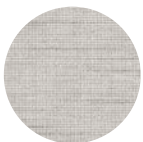
Cool Carbon
1046-87



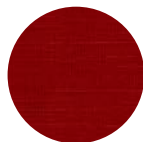
Peaceful Pewter
1046-89

Look-see – Grade B

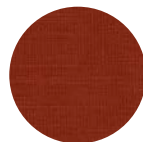
* Bleach Cleanable



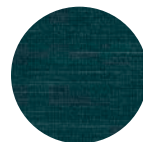
Snow
1044-11



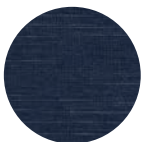
Lava
1044-44



Terra Cotta
1044-46



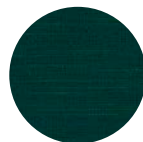
Wavelet
1044-56



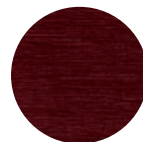
Ultramarine
1044-57



Midnight
1044-59



Foliage
1044-67

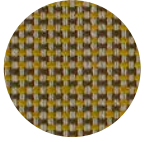


Wine
1044-74

EVERYDAY TEXTURES

Checkmate – Grade C

* Bleach Cleanable



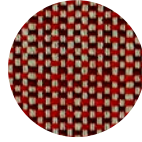
Golden Grey
1043-22



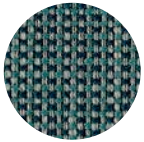
Tanned Umber
1043-25



Coral Rust
1043-43



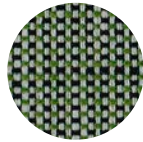
Red Brick
1043-44



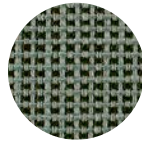
Aqua Sky
1043-56



Royal Navy
1043-58



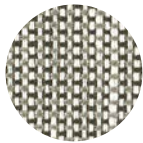
Blue Green
1043-63



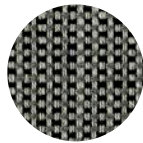
Forest Mint
1043-66



Purple Indigo
1043-77



Smoke Slate
1043-80



Charcoal Black
1043-89

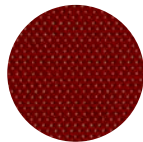
Poppy – Grade C



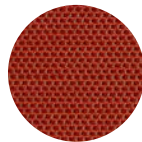
Natural
1047-16



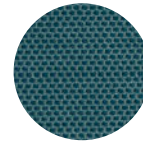
Khaki
1047-35



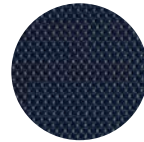
Flame
1047-44



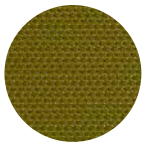
Punch
1047-45



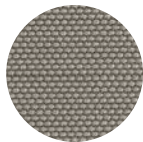
Pool
1047-56



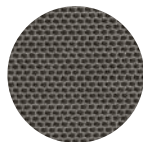
Night
1047-59



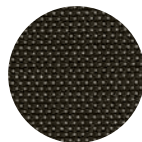
Limelight
1047-63



Neutral
1047-83



Graphite
1047-85



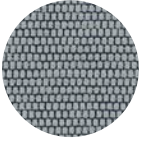
Ink
1047-89

For additional product information visit www.hbftextiles.com

EVERYDAY TEXTURES

Look-see – Grade B

* Bleach Cleanable



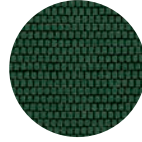
Noble Navy
1046-58



Bewitched Blue
1046-59



Jungly Jade
1046-64



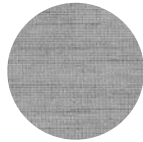
Gallant Green
1046-67



Plum
1044-75



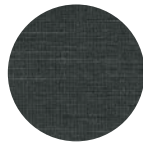
Electric
1044-77



Shady
1044-80



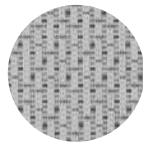
Foggy
1044-85



Stone
1044-89

Zippy – Grade B

* Bleach Cleanable



Winter White
1045-10



Deep Red
1045-44



School Blue
1045-55



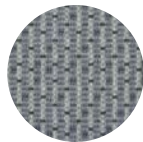
Denim Blue
1045-58



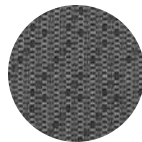
Navy
1045-59



Pine
1045-67



Grey
1045-80



Dark Grey
1045-89

ASH: (AH) FINISHES



AH310
Smoke Opaque



AH400
Clear



AH402
Black Opaque



AH403
Grey Opaque



AH404
Warm White Opaque



AH405
Mist Opaque



AH406
Denim Opaque



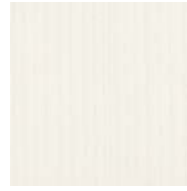
AH407
Pewter Opaque



AH408
Peppercorn Opaque



AH901
Amber



AH902
Designer White Opaque



AH911
Warm Brick



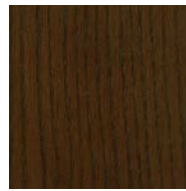
AH929
Nutmeg



AH937
Bark



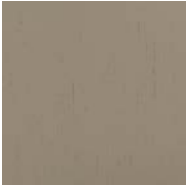
AH984
Dark Roast



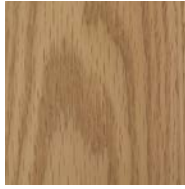
AH993
Sumatra

Screen images are intended as a guide only and should not be regarded as absolutely correct. For exact color/texture, please visit www.hbf.com to request an actual sample.

OAK: (RK) FINISHES



RK310
Smoke Opaque



RK400
Clear



RK402
Black Opaque



RK403
Grey Opaque



RK404
Warm White Opaque



RK405
Mist Opaque



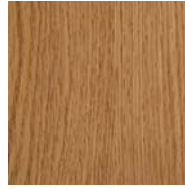
RK406
Denim Opaque



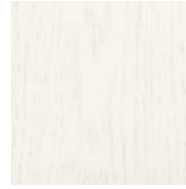
RK407
Pewter Opaque



RK408
Peppercorn Opaque



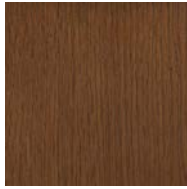
RK901
Amber



RK902
Designer White Opaque



RK911
Warm Brick



RK929
Nutmeg



RK937
Bark



RK984
Dark Roast



RK993
Sumatra

Screen images are intended as a guide only and should not be regarded as absolutely correct.
For exact color/texture, please visit www.hbf.com to request an actual sample.



WALNUT: (NT) FINISHES



NT310
Smoke Opaque



NT400
Clear



NT402
Black Opaque



NT403
Grey Opaque



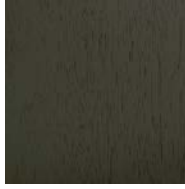
NT404
Warm White Opaque



NT405
Mist Opaque



NT406
Denim Opaque



NT407
Pewter Opaque



NT408
Peppercorn Opaque



NT902
Designer White Opaque



NT911
Warm Brick



NT929
Nutmeg



NT937
Bark



NT984
Dark Roast



NT993
Sumatra

Screen images are intended as a guide only and should not be regarded as absolutely correct.
For exact color/texture, please visit www.hbf.com to request an actual sample.



MAPLE: (NE) CORE FINISHES *Note: Exclusively available for the Andaz Collection.*



NE310
Smoke Opaque



NE402
Black Opaque



NE406
Denim Opaque



NE902
Designer White Opaque

MAPLE: (NE) CURATED FINISHES *Note: Exclusively available for the Andaz Collection.*



NE150
Conifer Opaque



NE152
Cameo Opaque

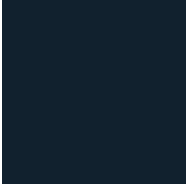


NE153
Cordovan Opaque

Screen images are intended as a guide only and should not be regarded as absolutely correct.
For exact color/texture, please visit www.hbf.com to request an actual sample.



LAMINATES: (PL) *Note: Available on selected Andaz products only:*



PLS3022T
Denim



PLSE101SD
Black



PLSG214N
Grey Velvet



PLSG228SD
Peppercorn

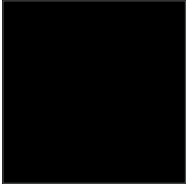


PLSW826SD
White

Screen images are intended as a guide only and should not be regarded as absolutely correct.
For exact color/texture, please visit www.hbf.com to request an actual sample.



POWDER COATS:



BL
Black



WI
White



LG
Light Grey



SP
Satin Pewter

METALS:



POL
Polished Chrome



BSS
Brushed Stainless



PSS
Polished Stainless

Screen images are intended as a guide only and should not be regarded as absolutely correct.
For exact color/texture, please visit www.hbf.com to request an actual sample.



HBF
TEXTILES

Andaz Series Specifications Overview

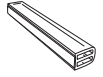
Collection Details

Guest Chair

Wood Shell | Laminate Shell with Clear Wood Edge | Upholstered | Upholstered with Channel Stitch

Guest chair comfortably stacks 8 chairs high on the floor. Two bumpers attached to metal base plate.

Guest chair stacking cart. (Holds a maximum of 6 chairs.)



Channel Stitch Options

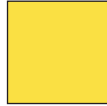
Thread color must be specified on the Andaz Chair for each line item. Specify STD for standard colors. However, thread color may be specified in one of twelve contrasting colors:



10 White



20 Beige



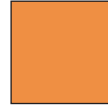
22 Yellow



39 Brown



44 Red



45 Orange



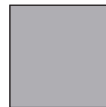
58 Blue



67 Green



77 Purple



84 Light Grey



89 Dark Grey



90 Black

Wood Shell Options

Shell available in ash or maple

Refer to HBF Standard Ash finishes for color selection. Finish selection must be noted on order.

Frame Finishes

Black Powder Coat Metal | White Powder Coat Metal | Polished Chrome

Feet

Standard Glide | Swivel Glide



List Prices

Sq. Ft. Yards

Dimensions

Andaz HGQ115-211



835

OH 31 AH
 OW 23 WBA
 OD 21½ DED
 SH 17½ DEW
 SD 18 R

Shipping Weight 31
 Cube 26

Mid Back | Ash Shell | Metal Frame - Black Powder Coat

Product rated at 350 lbs.

Quick Ship Program

LEVEL[®] Certified
 SCS Indoor Advantage[™] Certified

PLEASE SPECIFY THE FOLLOWING TO ORDER:

| MODEL NUMBER | BASE FINISH | SPECIES & FINISH | FOOT |
|--------------|---|--|---|
| | Options for metal leg finish: | Options for wood finishes: AH = Ash | Options for foot: G = Glide |
| | BL = Black Powder Coat WI = White Powder Coat PC = Polished Chrome +\$150 | Options for wood finishes: NE = Maple <i>Core Finishes:</i> 310 = Smoke Opaque 400 = Clear 402 = Black Opaque 403 = Grey Opaque 404 = Warm White Opaque 405 = Mist Opaque 406 = Denim Opaque 407 = Pewter Opaque 408 = Peppercorn Opaque 901 = Amber 902 = Designer White Opaque 911 = Warm Brick 929 = Nutmeg 937 = Bark 984 = Dark Roast 993 = Sumatra | <i>Core Finishes:</i> 310 = Smoke Opaque 402 = Black Opaque 406 = Denim Opaque 902 = Designer White Opaque <i>Curated Finishes:</i> 150 = Conifer Opaque 152 = Cameo Opaque 153 = Cordovan Opaque |
| | | | STD = Standard SVL = Swivel +\$10 |

HGQ115-211.Base.Wood.Foot Example: HGQ115-211.BL.AH400.GSTD



List Prices

Sq. Ft. Yards

Dimensions

Andaz HGQ115-221



| | | | | | |
|----------|-------------|---------|-------------|-------------|-------------|
| COM | 1060 | Grade F | 1085 | Leather I | 1305 |
| COL | 1135 | Grade G | 1105 | Leather II | 1385 |
| Grade AA | 1020 | Grade H | 1120 | Leather III | 1465 |
| Grade A | 1030 | Grade J | 1130 | Leather IV | 1545 |
| Grade B | 1040 | Grade K | 1150 | Leather V | 1625 |
| Grade C | 1050 | Grade L | 1185 | Leather VI | 1705 |
| Grade D | 1065 | Grade M | 1230 | | |
| Grade E | 1075 | | | | |

| | | |
|----|-----|-----|
| OH | 31 | AH |
| OW | 23 | WBA |
| OD | 21½ | DED |
| SH | 18¼ | DEW |
| SD | 18 | R |

| | |
|-----------------|----|
| Shipping Weight | 33 |
| Cube | 26 |

Fully Upholstered Seat and Back | Mid Back | Ash Shell | Metal Frame - Black Powder Coat

Product rated at 350 lbs.

Note: Please contact the HBF Client Experience Team (855-423-2020) or your sales rep for a list of approved textiles.

Quick Ship Program

LEVEL® Certified
SCS Indoor Advantage™ Certified


PLEASE SPECIFY THE FOLLOWING TO ORDER:

| MODEL NUMBER | TEXTILES | FLAMMABILITY | BASE FINISH | SPECIES & FINISH | FOOT | |
|--------------|---|---|--|---|---|---|
| | Indicate fabric choice: <i>See options for fabrics at www.hbftextiles.com</i> | Indicate flammability: U = Cal 117 U3 = Cal 133 | Options for metal leg finish: BL = Black Powder Coat WI = White Powder Coat PC = Polished Chrome +\$150 | Options for wood finishes: AH = Ash 310 = Smoke Opaque 400 = Clear 402 = Black Opaque 403 = Grey Opaque 404 = Warm White Opaque 405 = Mist Opaque 406 = Denim Opaque 407 = Pewter Opaque 408 = Peppercorn Opaque 901 = Amber 902 = Designer White Opaque 911 = Warm Brick 929 = Nutmeg 937 = Bark 984 = Dark Roast 993 = Sumatra | Options for wood finishes: NE = Maple <i>Core Finishes:</i> 310 = Smoke Opaque 402 = Black Opaque 406 = Denim Opaque 902 = Designer White Opaque <i>Curated Finishes:</i> 150 = Conifer Opaque 152 = Cameo Opaque 153 = Cordovan Opaque | Options for foot: G = Glide STD = Standard SVL = Swivel +\$10 |

HGQ115-221.Fabric.Flammability.Base.Wood.Foot

Example: HGQ115-221.950-88.U.BL.AH400.GSTD



| | List Prices | | | | Sq. Ft. | Yards | Dimensions | | |
|--|-------------|-------------|---------|-------------|-------------|-------------|------------|---|-------------------------------|
| Andaz HGQ115-231 | | | | | | | | | |
|  | COM | 1086 | Grade F | 1111 | Leather I | 1331 | 18 | 1 | OH 31 AH |
| | COL | 1161 | Grade G | 1131 | Leather II | 1411 | | | OW 23 WBA |
| | Grade AA | 1046 | Grade H | 1146 | Leather III | 1491 | | | OD 21½ DED |
| | Grade A | 1056 | Grade J | 1156 | Leather IV | 1571 | | | SH 18¾ DEW |
| | Grade B | 1066 | Grade K | 1176 | Leather V | 1651 | | | SD 18 R |
| | Grade C | 1076 | Grade L | 1211 | Leather VI | 1731 | | | |
| | Grade D | 1091 | Grade M | 1256 | | | | | |
| Grade E | 1101 | | | | | | | | Shipping Weight 33 Cube 26 |

Fully Upholstered Seat and Back | Mid Back | Ash Shell | Metal Frame - Black Powder Coat | Channel Stitch Detail

Product rated at 350 lbs.

Note: Please contact the HBF Client Experience Team (855-423-2020) or your sales rep for a list of approved textiles.

LEVEL[®] Certified
SCS Indoor Advantage[™] Certified

PLEASE SPECIFY THE FOLLOWING TO ORDER:

| MODEL NUMBER | TEXTILES | FLAMMABILITY | STITCH | BASE FINISH | SPECIES & FINISH | FOOT | |
|--------------|---|---|---|--|---|---|---|
| | Indicate fabric choice: <i>See options for fabrics at www.hbftextiles.com</i> | Indicate flammability: U = Cal 117 U3 = Cal 133 | Options for thread color: 10 = White 20 = Beige 22 = Yellow 39 = Brown 44 = Red 45 = Orange 58 = Blue 67 = Green 77 = Purple 84 = Light Grey 89 = Dark Grey 90 = Black SM = Standard Match | Options for metal leg finish: BL = Black Powder Coat WI = White Powder Coat PC = Polished Chrome +\$150 | Options for wood finishes: AH = Ash 310 = Smoke Opaque 400 = Clear 402 = Black Opaque 403 = Grey Opaque 404 = Warm White Opaque 405 = Mist Opaque 406 = Denim Opaque 407 = Pewter Opaque 408 = Peppercorn Opaque 901 = Amber 902 = Designer White Opaque 911 = Warm Brick 929 = Nutmeg 937 = Bark 984 = Dark Roast 993 = Sumatra | Options for wood finishes: NE = Maple <i>Core Finishes:</i> 310 = Smoke Opaque 402 = Black Opaque 406 = Denim Opaque 902 = Designer White Opaque <i>Curated Finishes:</i> 150 = Conifer Opaque 152 = Cameo Opaque 153 = Cordovan Opaque | Options for foot: G = Glide STD = Standard SVL = Swivel +\$10 |

HGQ115-231.Fabric.Flammability.Stitch.Base.Wood.Foot Example: HGQ115-231.950-88.U.SM.BL.AH400.GSTD



| | List Prices | Sq. Ft. | Yards | Dimensions |
|--|-------------|---------|-------|------------|
|--|-------------|---------|-------|------------|

Andaz HGQ115-361



595

OH 31 AH
OW 23 WBA
OD 21½ DED
SH 18¼ DEW
SD 18 R

Shipping Weight 31
Cube 26


Mid Back | Laminate Shell | Metal Frame - Black Powder Coat
Product rated at 350 lbs.

PLEASE SPECIFY THE FOLLOWING TO ORDER:

| MODEL NUMBER | BASE FINISH | FINISH | FOOT |
|--------------|---|--|---|
| | Options for metal leg finish: BL = Black Powder Coat WI = White Powder Coat PC = Polished Chrome +\$150 | Options for laminate finishes: PL = Laminate S3022T = Denim SE101SD = Black SG214N = Grey Velvet SG228SD = Peppercorn SW826SD = White | Options for foot: G = Glide STD = Standard SVL = Swivel +\$10 |
| | | | |

HGQ115-361.Base.Finish.Foot Example: HGQ115-361.BL.PLSE101SD.GSTD



| | List Prices | | | Sq. Ft. | Yards | Dimensions | | | | |
|--|-------------|------------|---------|------------|-------------|-------------|----|---|-----------------|-----|
| Andaz HGQ115-371 | | | | | | | | | | |
|  | COM | 810 | Grade F | 835 | Leather I | 1055 | 18 | 1 | OH 31 | AH |
| | COL | 885 | Grade G | 855 | Leather II | 1135 | | | OW 23 | WBA |
| | Grade AA | 770 | Grade H | 870 | Leather III | 1215 | | | OD 21½ | DED |
| | Grade A | 780 | Grade J | 880 | Leather IV | 1295 | | | SH 18¾ | DEW |
| | Grade B | 790 | Grade K | 900 | Leather V | 1375 | | | SD 18 | R |
| | Grade C | 800 | Grade L | 935 | Leather VI | 1455 | | | | |
| | Grade D | 815 | Grade M | 980 | | | | | Shipping Weight | 33 |
| | Grade E | 825 | | | | | | | Cube | 26 |

Fully Upholstered Seat and Back | Mid Back | Laminate Shell | Metal Frame - Black Powder Coat

Product rated at 350 lbs.

Note: Please contact the HBF Client Experience Team (855-423-2020) or your sales rep for a list of approved textiles.

PLEASE SPECIFY THE FOLLOWING TO ORDER:

| MODEL NUMBER | TEXTILES | FLAMMABILITY | BASE FINISH | FINISH | FOOT |
|--------------|---|---|--|---|---|
| | Indicate fabric choice: <i>See options for fabrics at www.bbftextiles.com</i> | Indicate flammability: U = Cal 117 U3 = Cal 133 | Options for metal leg finish: BL = Black Powder Coat WI = White Powder Coat PC = Polished Chrome +\$150 | Options for laminate finishes: PL = Laminate S3022T = Denim SE101SD = Black SG214N = Grey Velvet SG228SD = Peppercorn SW826SD = White | Options for foot: G = Glide STD = Standard SVL = Swivel +\$10 |

HGQ115-371.Fabric.Flammability.Base.Finish.Foot Example: HGQ115-371.950-88.U.BL.PLSE101SD.GSTD



| | List Prices | | | Sq. Ft. | Yards | Dimensions | | | | |
|-------------------------|-------------|------|---------|---------|-------------|------------|----|---|-----------------|-----|
| Andaz HGQ115-381 | | | | | | | | | | |
| | COM | 1025 | Grade F | 1050 | Leather I | 1270 | 18 | 1 | OH 31 | AH |
| | COL | 1100 | Grade G | 1070 | Leather II | 1350 | | | OW 23 | WBA |
| | Grade AA | 985 | Grade H | 1085 | Leather III | 1430 | | | OD 21½ | DED |
| | Grade A | 995 | Grade J | 1095 | Leather IV | 1510 | | | SH 18¼ | DEW |
| | Grade B | 1005 | Grade K | 1115 | Leather V | 1590 | | | SD 18 | R |
| | Grade C | 1015 | Grade L | 1150 | Leather VI | 1670 | | | | |
| | Grade D | 1030 | Grade M | 1195 | | | | | | |
| Grade E | 1040 | | | | | | | | | |
| | | | | | | | | | Shipping Weight | 33 |
| | | | | | | | | | Cube | 26 |

Fully Upholstered Seat and Back | Mid Back | Laminate Shell | Metal Frame - Black Powder Coat | Channel-Stitch Detail
 Product rated at 350 lbs.
 Note: Please contact the HBF Client Experience Team (855-423-2020) or your sales rep for a list of approved textiles.

PLEASE SPECIFY THE FOLLOWING TO ORDER:

| MODEL NUMBER | TEXTILES | FLAMMABILITY | STITCH | BASE FINISH | FINISH | FOOT |
|--------------|--|---|---|--|---|---|
| | Indicate fabric choice: <i>See options for fabrics at www.bbftextiles.com</i> | Indicate flammability: U = Cal 117 U3 = Cal 133 | Options for thread color: 10 = White 20 = Beige 22 = Yellow 39 = Brown 44 = Red 45 = Orange 58 = Blue 67 = Green 77 = Purple 84 = Light Grey 89 = Dark Grey 90 = Black SM = Standard Match | Options for metal leg finish: BL = Black Powder Coat WI = White Powder Coat PC = Polished Chrome +\$150 | Options for laminate finishes: PL = Laminate S3022T = Denim SE101SD = Black SG214N = Grey Velvet SG228SD = Peppercorn SW826SD = White | Options for foot: G = Glide STD = Standard SVL = Swivel +\$10 |

HGQ115-381.Fabric.Flammability.Stitch.Base.Finish.Foot Example: HGQ115-381.950-88.U.SM.BL.PLSE101SD.GSTD



Andaz HAQ115-010

1765

OH 49 AH
OW 25½ WBA
OD 38 DED
SH DEW
SD R

Shipping Weight 40
Cube 36



Stacking Cart | Black Metal | Soft Wheel

Note: The cart will hold a maximum of six (6) chairs.



Brentwood Specifications

Collection Details Guest Chair
Wood frame | Upholstered

Wood Options Frame available in Ash.
Refer to HBF Standard Ash finishes for color selection. Finish selection must be noted on order.

| | List Prices | | Sq.Ft. | Yards | Dimensions | |
|-----------------------------|----------------------|---------------------|-------------------------|-------|------------|--------------------|
| Brentwood HGB294-011 | | | | | | |
| | COM 1662 | Grade F 1892 | Leather I 2547 | 54 | 3 | OH 33 AH 25½ |
| | COL 1737 | Grade G 1942 | Leather II 2787 | | | OW 24½ WBA 17½ |
| | Grade AA 1687 | Grade H 1987 | Leather III 3027 | | | OD 25 DED |
| | Grade A 1722 | Grade J 2022 | Leather IV 3267 | | | SH 19 DEW |
| | Grade B 1752 | Grade K 2087 | Leather V 3507 | | | SD 17 R |
| | Grade C 1787 | Grade L 2187 | Leather VI 3747 | | | |
| | Grade D 1822 | Grade M 2322 | | | | Shipping Weight 32 |
| | Grade E 1852 | | | | | Cube 32 |

Fully Upholstered Seat, Back and Arms | Ash Frame

Quick Ship Program

LEVEL® Certified
SCS Indoor Advantage™ Certified

PLEASE SPECIFY THE FOLLOWING TO ORDER:

| MODEL NUMBER | TEXTILES | FLAMMABILITY | SPECIES & FINISH |
|--------------|---|---|---|
| | Indicate fabric choice: <i>See options for fabrics at www.bbf textiles.com</i> | Indicate flammability: U = Cal 117 U3 = Cal 133 | Options for wood finishes: AH = Ash 310 = Smoke Opaque 400 = Clear 402 = Black Opaque 403 = Grey Opaque 404 = Warm White Opaque 405 = Mist Opaque 406 = Denim Opaque 407 = Pewter Opaque 408 = Peppercorn Opaque 901 = Amber 902 = Designer White Opaque 911 = Warm Brick 929 = Nutmeg 937 = Bark 984 = Dark Roast 993 = Sumatra |


HGB294-011.Fabric.Flammability.Wood Example: HGB294-011.950-18.U.AH400



Carlyle Series Specifications

Collection Details Guest Chair
Upholstered | Wood Seat and Back

Wood Options Available in ash.
Refer to HBF Standard Ash finishes for color selection. Finish selection must be noted on order.

| | List Prices | | | | Sq. Ft. | Yards | Dimensions | | |
|--|-------------|------|---------|------|-------------|-------|------------|----|--------------------|
| Carlyle HGT115-081 | | | | | | | | | |
|  | COM | 1512 | Grade F | 1592 | Leather I | 1917 | 27 | 1½ | OH 30½ AH |
| | COL | 1587 | Grade G | 1612 | Leather II | 2037 | | | OW 19¾ WBA |
| | Grade AA | 1487 | Grade H | 1637 | Leather III | 2157 | | | OD 21¾ DED |
| | Grade A | 1502 | Grade J | 1652 | Leather IV | 2277 | | | SH 18¾ DEW |
| | Grade B | 1522 | Grade K | 1687 | Leather V | 2397 | | | SD 16¼ R |
| | Grade C | 1537 | Grade L | 1737 | Leather VI | 2517 | | | |
| | Grade D | 1552 | Grade M | 1802 | | | | | Shipping Weight 36 |
| | Grade E | 1572 | | | | | | | Cube 25 |

Fully Upholstered Seat and Back | Ash Frame

Quick Ship Program 

LEVEL® Certified
SCS Indoor Advantage™ Certified

PLEASE SPECIFY THE FOLLOWING TO ORDER:

| MODEL NUMBER | TEXTILES | FLAMMABILITY | SPECIES & FINISH |
|--------------|---|---|---|
| | Indicate fabric choice: <i>See options for fabrics at www.bbf textiles.com</i> | Indicate flammability: U = Cal 117 U3 = Cal 133 | Options for wood finishes: AH = Ash 310 = Smoke Opaque 400 = Clear 402 = Black Opaque 403 = Grey Opaque 404 = Warm White Opaque 405 = Mist Opaque 406 = Denim Opaque 407 = Pewter Opaque 408 = Peppercorn Opaque 901 = Amber 902 = Designer White Opaque 911 = Warm Brick 929 = Nutmeg 937 = Bark 984 = Dark Roast 993 = Sumatra |

HGC115-081.Fabric.Flammability.Wood Example: HGC115-081.950-88.U.AH400



| | List Prices | | | | Sq. Ft. | Yards | Dimensions | |
|--|-------------|--|--|--|---------|-------|------------|--|
|--|-------------|--|--|--|---------|-------|------------|--|

Carlyle HGT115-201



Open Market

| | | | | | |
|----------|------|---------|------|-------------|------|
| COM | 2085 | Grade F | 2165 | Leather I | 2490 |
| COL | 2160 | Grade G | 2185 | Leather II | 2610 |
| Grade AA | 2060 | Grade H | 2210 | Leather III | 2730 |
| Grade A | 2075 | Grade J | 2225 | Leather IV | 2850 |
| Grade B | 2095 | Grade K | 2260 | Leather V | 2970 |
| Grade C | 2110 | Grade L | 2310 | Leather VI | 3090 |
| Grade D | 2125 | Grade M | 2375 | | |
| Grade E | 2145 | | | | |

27 1½

| | | | |
|----|-----|-----|--|
| OH | 30½ | AH | |
| OW | 19¾ | WBA | |
| OD | 21¾ | DED | |
| SH | 18¾ | DEW | |
| SD | 16¼ | R | |

Shipping Weight 36
Cube 25

Fully Upholstered Seat and Back | Stretchers | Ash Frame
Product rated at 350 lbs.

LEVEL[®] Certified
SCS Indoor Advantage[™] Certified

PLEASE SPECIFY THE FOLLOWING TO ORDER:

| MODEL NUMBER | TEXTILES | FLAMMABILITY | SPECIES & FINISH |
|--------------|---|---|---|
| | Indicate fabric choice: <i>See options for fabrics at www.bbf textiles.com</i> | Indicate flammability: U = Cal 117 U3 = Cal 133 | Options for wood finishes: AH = Ash 310 = Smoke Opaque 400 = Clear 402 = Black Opaque 403 = Grey Opaque 404 = Warm White Opaque 405 = Mist Opaque 406 = Denim Opaque 407 = Pewter Opaque 408 = Peppercorn Opaque 901 = Amber 902 = Designer White Opaque 911 = Warm Brick 929 = Nutmeg 937 = Bark 984 = Dark Roast 993 = Sumatra |

HGC115-201.Fabric.Flammability.Wood Example: HGC115-201.950-88.U.AH400



Corfino Specifications

Collection Details Guest Chair | Bench
Metal Frame | Upholstered

Frame Finishes Satin Pewter Powder Coat | Brushed Stainless Steel | Polished Stainless Steel
Refer to HBF Standard Metal finishes for color selection. Finish selection must be noted on order.

| | List Prices | | | Sq.Ft. | Yards | Dimensions | | | | | | |
|---------------------------|-------------|------|---------|--------|-------|------------|-------------|--------|----|--------|-----------------|--------|
| Corfino HGE214-201 | | | | | | | | | | | | |
| | COM | 1274 | Grade F | 1404 | 36 | 2 | OH | 32 1/4 | AH | 26 | | |
| | COL | 1349 | Grade G | 1434 | | | Leather II | 1999 | OW | 22 1/2 | WBA | 19 1/4 |
| | Grade AA | 1264 | Grade H | 1464 | | | Leather III | 2159 | OD | 24 | DED | |
| | Grade A | 1289 | Grade J | 1489 | | | Leather IV | 2319 | SH | 20 | DEW | |
| | Grade B | 1309 | Grade K | 1534 | | | Leather V | 2479 | SD | 19 1/2 | R | |
| | Grade C | 1334 | Grade L | 1599 | | | Leather VI | 2639 | | | | |
| | Grade D | 1354 | Grade M | 1689 | | | | | | | Shipping Weight | 39 |
| | Grade E | 1379 | | | | | | | | | Cube | 25 |

Fully Upholstered Seat and Back | Square Open Arm | Mid T Back | No Clean Out | Metal Frame - Satin Pewter Powder Coat
Product Rated at 350 lbs.

Quick Ship Program | Satin Pewter Painted Metal

LEVEL® Certified
SCS Indoor Advantage™ Certified

PLEASE SPECIFY THE FOLLOWING TO ORDER: _____

| MODEL NUMBER | TEXTILES | FLAMMABILITY | FRAME FINISH |
|--------------|---|---|---|
| | Indicate fabric choice: <i>See options for fabrics at www.hbftextiles.com</i> | Indicate flammability: U = Cal 117 U3 = Cal 133 | Options for metal finish: SP = Satin Pewter Powder Coat BSS = Brushed Stainless Steel +\$200 PSS = Polished Stainless Steel +\$600 |
| | | | |

HGE214-201.Fabric.Flammability.Frame Example: HGE214-201.950-88.U.SP




Essens Specifications

Overview Sculpted Wood Back | Sculpted Wood Seat | Upholstered Seat Pad
Metal Base | Standard Glide | Casters | Self-Return Swivel

Wood Oak | Walnut

Metal Powder Coat | Plated

Feet Standard Glide | Casters | Go Glide

| | List Prices | Sq. Ft. | Yards | Dimensions |
|--|------------------------|--------------|------------------|-----------------|
| Essens HGE117-061 | | | | |
|  | Seat Upholstery | | 9 | ½ |
| | COM 1903 | Grade F 1878 | Leather I 1988 | OH 32 AH 27¾ |
| | COL 1978 | Grade G 1888 | Leather II 2028 | OW 22¾ WBA 21¼ |
| | Grade AA 1843 | Grade H 1893 | Leather III 2068 | OD 18¾ DED |
| | Grade A 1848 | Grade J 1898 | Leather IV 2108 | SH 18¾ DEW |
| | Grade B 1858 | Grade K 1913 | Leather V 2148 | SD 15¾ R |
| | Grade C 1863 | Grade L 1928 | Leather VI 2188 | |
| | Grade D 1868 | Grade M 1948 | | Shipping Weight |
| | Grade E 1873 | | | Cube |

Wood Back and Arms | Upholstered Seat | Tube Base | Standard Glides

LEVEL® Certified
SCS Indoor Advantage™ Certified

PLEASE SPECIFY THE FOLLOWING TO ORDER:

| MODEL NUMBER | TEXTILES | FLAMMABILITY | BASE FINISH | SPECIES & FINISH |
|--------------|---|---|---|---|
| | Indicate fabric choice: <i>See options for fabrics at www.hbftextiles.com</i> | Indicate flammability: U = Cal 117 U3 = Cal 133 | Options for metal: BL = Black Powder Coat WI = White Powder Coat LG = Light Grey Powder Coat POL = Polished Chrome +\$340 | Options for wood finishes: RK = Oak 310 = Smoke Opaque 400 = Clear 402 = Black Opaque 403 = Grey Opaque 404 = Warm White Opaque 405 = Mist Opaque 406 = Denim Opaque 407 = Pewter Opaque 408 = Peppercorn Opaque 901 = Amber 902 = Designer White Opaque 911 = Warm Brick 929 = Nutmeg 937 = Bark 984 = Dark Roast 993 = Sumatra |
| | | | | Options for wood finishes: NT = Walnut +\$485 310 = Smoke Opaque 400 = Clear 402 = Black Opaque 403 = Grey Opaque 404 = Warm White Opaque 405 = Mist Opaque 406 = Denim Opaque 407 = Pewter Opaque 408 = Peppercorn Opaque 902 = Designer White Opaque 911 = Warm Brick 929 = Nutmeg 937 = Bark 984 = Dark Roast 993 = Sumatra |

HGE117-061.Fabric.Flammability.Base.Wood Example: HGE117-061.300-18.U.BL.RK310



List Prices

Sq. Ft.

Yards

Dimensions

Essens HGE117-071



Seat Upholstery

| | | | | | |
|----------|------|---------|------|-------------|------|
| COM | 1963 | Grade F | 1938 | Leather I | 2048 |
| COL | 2038 | Grade G | 1948 | Leather II | 2088 |
| Grade AA | 1903 | Grade H | 1953 | Leather III | 2128 |
| Grade A | 1908 | Grade J | 1958 | Leather IV | 2168 |
| Grade B | 1918 | Grade K | 1973 | Leather V | 2208 |
| Grade C | 1923 | Grade L | 1988 | Leather VI | 2248 |
| Grade D | 1928 | Grade M | 2008 | | |
| Grade E | 1933 | | | | |

| | | | | | |
|---|-----|-----------------|--------|-----|--------|
| 9 | 1/2 | OH | 32 | AH | 27 3/8 |
| | | OW | 22 7/8 | WBA | 21 1/4 |
| | | OD | 18 3/4 | DED | |
| | | SH | 18 1/8 | DEW | |
| | | SD | 15 3/4 | R | |
| | | Shipping Weight | | | |
| | | Cube | | | |

Wood Back and Arms | Upholstered Seat | Tube Base | Casters

LEVEL® Certified
SCS Indoor Advantage™ Certified

PLEASE SPECIFY THE FOLLOWING TO ORDER:

| MODEL NUMBER | TEXTILES | FLAMMABILITY | BASE FINISH | SPECIES & FINISH |
|--------------|---|---|---|---|
| | Indicate fabric choice: <i>See options for fabrics at www.hbftextiles.com</i> | Indicate flammability: U = Cal 117 U3 = Cal 133 | Options for metal: BL = Black Powder Coat WI = White Powder Coat LG = Light Grey Powder Coat POL = Polished Chrome +\$340 | Options for wood finishes: RK = Oak 310 = Smoke Opaque 400 = Clear 402 = Black Opaque 403 = Grey Opaque 404 = Warm White Opaque 405 = Mist Opaque 406 = Denim Opaque 407 = Pewter Opaque 408 = Peppercorn Opaque 901 = Amber 902 = Designer White Opaque 911 = Warm Brick 929 = Nutmeg 937 = Bark 984 = Dark Roast 993 = Sumatra Options for wood finishes: NT = Walnut +\$485 310 = Smoke Opaque 400 = Clear 402 = Black Opaque 403 = Grey Opaque 404 = Warm White Opaque 405 = Mist Opaque 406 = Denim Opaque 407 = Pewter Opaque 408 = Peppercorn Opaque 902 = Designer White Opaque 911 = Warm Brick 929 = Nutmeg 937 = Bark 984 = Dark Roast 993 = Sumatra |

HGE117-071.Fabric.Flammability.Base.Wood Example: HGE117-071.300-18.U.BL.RK310



List Prices

Sq. Ft.

Yards

Dimensions

Essens HGE117-081



Seat Upholstery

| | | |
|---------------|--------------|------------------|
| COM 2125 | Grade F 2100 | Leather I 2210 |
| COL 2200 | Grade G 2110 | Leather II 2250 |
| Grade AA 2065 | Grade H 2115 | Leather III 2290 |
| Grade A 2070 | Grade J 2120 | Leather IV 2330 |
| Grade B 2080 | Grade K 2135 | Leather V 2370 |
| Grade C 2085 | Grade L 2150 | Leather VI 2410 |
| Grade D 2090 | Grade M 2170 | |
| Grade E 2095 | | |

| | | | |
|---|-----|-----------------|------------|
| 9 | 1/2 | OH 32 | AH 27 3/8 |
| | | OW 22 7/8 | WBA 21 1/4 |
| | | OD 18 3/4 | DED |
| | | SH 18 1/8 | DEW |
| | | SD 15 3/4 | R |
| | | Shipping Weight | |
| | | Cube | |

Wood Back and Arms | Upholstered Seat | Tube Base | Go Glides

LEVEL[®] Certified
SCS Indoor Advantage[™] Certified

PLEASE SPECIFY THE FOLLOWING TO ORDER:

| MODEL NUMBER | TEXTILES | FLAMMABILITY | BASE FINISH | SPECIES & FINISH |
|--------------|---|---|---|---|
| | Indicate fabric choice: <i>See options for fabrics at www.hbftextiles.com</i> | Indicate flammability: U = Cal 117 U3 = Cal 133 | Options for metal: BL = Black Powder Coat WI = White Powder Coat LG = Light Grey Powder Coat POL = Polished Chrome +\$340 | Options for wood finishes: RK = Oak 310 = Smoke Opaque 400 = Clear 402 = Black Opaque 403 = Grey Opaque 404 = Warm White Opaque 405 = Mist Opaque 406 = Denim Opaque 407 = Pewter Opaque 408 = Peppercorn Opaque 901 = Amber 902 = Designer White Opaque 911 = Warm Brick 929 = Nutmeg 937 = Bark 984 = Dark Roast 993 = Sumatra Options for wood finishes: NT = Walnut +\$485 310 = Smoke Opaque 400 = Clear 402 = Black Opaque 403 = Grey Opaque 404 = Warm White Opaque 405 = Mist Opaque 406 = Denim Opaque 407 = Pewter Opaque 408 = Peppercorn Opaque 902 = Designer White Opaque 911 = Warm Brick 929 = Nutmeg 937 = Bark 984 = Dark Roast 993 = Sumatra |

HGE117-081.Fabric.Flammability.Base.Wood Example: HGE117-081.300-18.U.BL.RK310



List Prices

Sq. Ft.

Yards

Dimensions

Essens HGE119-181



Seat Upholstery

| | | | | | |
|----------|------|---------|------|-------------|------|
| COM | 2183 | Grade F | 2158 | Leather I | 2268 |
| COL | 2258 | Grade G | 2168 | Leather II | 2308 |
| Grade AA | 2123 | Grade H | 2173 | Leather III | 2348 |
| Grade A | 2128 | Grade J | 2178 | Leather IV | 2388 |
| Grade B | 2138 | Grade K | 2193 | Leather V | 2428 |
| Grade C | 2143 | Grade L | 2208 | Leather VI | 2468 |
| Grade D | 2148 | Grade M | 2228 | | |
| Grade E | 2153 | | | | |

| | | | | | |
|-----------------|-----|----|--------|-----|--------|
| 9 | 1/2 | OH | 32 | AH | 27 3/8 |
| | | OW | 22 7/8 | WBA | 21 1/4 |
| | | OD | 18 3/4 | DED | |
| | | SH | 18 1/8 | DEW | |
| | | SD | 15 3/4 | R | |
| Shipping Weight | | | | | |
| Cube | | | | | |

Wood Back and Arms | Upholstered Seat | Tube Base with Self-Return Swivel | Standard Glides

LEVEL® Certified
SCS Indoor Advantage™ Certified

PLEASE SPECIFY THE FOLLOWING TO ORDER:

| MODEL NUMBER | TEXTILES | FLAMMABILITY | BASE FINISH | SPECIES & FINISH |
|--------------|---|---|---|---|
| | Indicate fabric choice: <i>See options for fabrics at www.hbftextiles.com</i> | Indicate flammability: U = Cal 117 U3 = Cal 133 | Options for metal: BL = Black Powder Coat WI = White Powder Coat LG = Light Grey Powder Coat POL = Polished Chrome +\$340 | Options for wood finishes: RK = Oak 310 = Smoke Opaque 400 = Clear 402 = Black Opaque 403 = Grey Opaque 404 = Warm White Opaque 405 = Mist Opaque 406 = Denim Opaque 407 = Pewter Opaque 408 = Peppercorn Opaque 901 = Amber 902 = Designer White Opaque 911 = Warm Brick 929 = Nutmeg 937 = Bark 984 = Dark Roast 993 = Sumatra Options for wood finishes: NT = Walnut +\$485 310 = Smoke Opaque 400 = Clear 402 = Black Opaque 403 = Grey Opaque 404 = Warm White Opaque 405 = Mist Opaque 406 = Denim Opaque 407 = Pewter Opaque 408 = Peppercorn Opaque 902 = Designer White Opaque 911 = Warm Brick 929 = Nutmeg 937 = Bark 984 = Dark Roast 993 = Sumatra |

HGE119-181.Fabric.Flammability.Base.Wood Example: HGE119-181.300-18.U.BL.RK310



List Prices

Sq. Ft.

Yards

Dimensions

Essens HGE119-191



Seat Upholstery

| | | |
|---------------|--------------|------------------|
| COM 2244 | Grade F 2219 | Leather I 2329 |
| COL 2319 | Grade G 2229 | Leather II 2369 |
| Grade AA 2184 | Grade H 2234 | Leather III 2409 |
| Grade A 2189 | Grade J 2239 | Leather IV 2449 |
| Grade B 2199 | Grade K 2254 | Leather V 2489 |
| Grade C 2204 | Grade L 2269 | Leather VI 2529 |
| Grade D 2209 | Grade M 2289 | |
| Grade E 2214 | | |

| | | | |
|---|-----|-----------------|------------|
| 9 | 1/2 | OH 32 | AH 27 3/8 |
| | | OW 22 7/8 | WBA 21 1/4 |
| | | OD 18 3/4 | DED |
| | | SH 18 1/8 | DEW |
| | | SD 15 3/4 | R |
| | | Shipping Weight | |
| | | Cube | |

Wood Back and Arms | Upholstered Seat | Tube Base with Self-Return Swivel | Go Glides

LEVEL[®] Certified
SCS Indoor Advantage[™] Certified

PLEASE SPECIFY THE FOLLOWING TO ORDER:

| MODEL NUMBER | TEXTILES | FLAMMABILITY | BASE FINISH | SPECIES & FINISH |
|--------------|---|---|---|---|
| | Indicate fabric choice: <i>See options for fabrics at www.hbftextiles.com</i> | Indicate flammability: U = Cal 117 U3 = Cal 133 | Options for metal: BL = Black Powder Coat WI = White Powder Coat LG = Light Grey Powder Coat POL = Polished Chrome +\$340 | Options for wood finishes: RK = Oak 310 = Smoke Opaque 400 = Clear 402 = Black Opaque 403 = Grey Opaque 404 = Warm White Opaque 405 = Mist Opaque 406 = Denim Opaque 407 = Pewter Opaque 408 = Peppercorn Opaque 901 = Amber 902 = Designer White Opaque 911 = Warm Brick 929 = Nutmeg 937 = Bark 984 = Dark Roast 993 = Sumatra Options for wood finishes: NT = Walnut +\$485 310 = Smoke Opaque 400 = Clear 402 = Black Opaque 403 = Grey Opaque 404 = Warm White Opaque 405 = Mist Opaque 406 = Denim Opaque 407 = Pewter Opaque 408 = Peppercorn Opaque 902 = Designer White Opaque 911 = Warm Brick 929 = Nutmeg 937 = Bark 984 = Dark Roast 993 = Sumatra |

HGE119-191.Fabric.Flammability.Base.Wood Example: HGE119-191.300-18.U.BL.RK310



Gubi® Beetle Specifications

Overview Plastic outer shell | Plastic seat and back | Upholstered seat | Upholstered seat and back | Metal base

Shell Available in 4 different colors



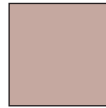
Green



Black



White



Sweet Pink

Base Black Powder Coat Metal | Brass

List Prices

Dimensions

Gubi® Beetle HGG217-011

685



Open Market

| | | |
|----|-----|-----|
| OH | 34½ | AH |
| OW | 22¼ | WBA |
| OD | 21½ | DED |
| SH | 19 | DEW |
| SD | 17¾ | R |

Shipping Weight
Cube

Plastic Shell | Metal Base

Product rated at 225 lbs.

Quick Ship Program

SCS Indoor Advantage™ Certified

PLEASE SPECIFY THE FOLLOWING TO ORDER:

| MODEL NUMBER | BASE FINISH | SHELL COLOR |
|--------------|--|---|
| | Options for metal finish: BL = Black Powder Coat BRS = Brass +\$65 | Options for plastic shell: GGRN = Green BL = Black GWHT = White SPNK = Sweet Pink |
| | | |

HGG217-011.Base.Shell Example: HGG217-011.BRS.GGRN



List Prices

Dimensions

Gubi® Beetle HGG217-021



Open Market

| | | | | | |
|----------|------|---------|-----|-------------|------|
| COM | 950 | Grade F | 925 | Leather I | 1035 |
| COL | 1025 | Grade G | 935 | Leather II | 1075 |
| Grade AA | 890 | Grade H | 940 | Leather III | 1115 |
| Grade A | 895 | Grade J | 945 | Leather IV | 1155 |
| Grade B | 905 | Grade K | 960 | Leather V | 1195 |
| Grade C | 910 | Grade L | 975 | Leather VI | 1235 |
| Grade D | 915 | Grade M | 995 | | |
| Grade E | 920 | | | | |

| | | |
|----|-----|-----|
| OH | 34½ | AH |
| OW | 22¼ | WBA |
| OD | 21½ | DED |
| SH | 20 | DEW |
| SD | 17¾ | R |

Shipping Weight
Cube

Upholstery Requires:
Fabric: ½ Yard
Leather: 9 Square Feet

Plastic Back | Upholstered Seat | Metal Base

Product rated at 225 lbs.

SCS Indoor Advantage™ Certified

PLEASE SPECIFY THE FOLLOWING TO ORDER:

| MODEL NUMBER | TEXTILES | FLAMMABILITY | BASE FINISH | SHELL COLOR |
|--------------|--|---|--|---|
| | Indicate fabric choice: <i>See options for seat cushion fabrics at www.hbftextiles.com</i> | Indicate flammability: U = Cal 117 U3 = Cal 133 | Options for metal finish: BL = Black Powder Coat BRS = Brass +\$65 | Options for plastic shell: GGRN = Green BL = Black GWHT = White SPNK = Sweet Pink |
| | | | | |

HGG217-021.Fabric.Flammability.Base.Shell Example: HGG217-021.300-18.U.BRS.GGRN



List Prices

Dimensions

Gubi® Beetle HGG217-031



Open Market

COM 1170 Add below upcharge to COM list for Back Upholstery:

| | | | | | |
|----------|----|---------|-----|-------------|-----|
| COL | 40 | Grade F | 50 | Leather I | 160 |
| Grade AA | 15 | Grade G | 60 | Leather II | 200 |
| Grade A | 20 | Grade H | 65 | Leather III | 240 |
| Grade B | 30 | Grade J | 70 | Leather IV | 280 |
| Grade C | 35 | Grade K | 85 | Leather V | 320 |
| Grade D | 40 | Grade L | 100 | Leather VI | 360 |
| Grade E | 45 | Grade M | 120 | | |

| | | | | | |
|----------|----|---------|-----|-------------|-----|
| COL | 40 | Grade F | 50 | Leather I | 160 |
| Grade AA | 15 | Grade G | 60 | Leather II | 200 |
| Grade A | 20 | Grade H | 65 | Leather III | 240 |
| Grade B | 30 | Grade J | 70 | Leather IV | 280 |
| Grade C | 35 | Grade K | 85 | Leather V | 320 |
| Grade D | 40 | Grade L | 100 | Leather VI | 360 |
| Grade E | 45 | Grade M | 120 | | |

| | | |
|----|-----|-----|
| OH | 34½ | AH |
| OW | 22¼ | WBA |
| OD | 21½ | DED |
| SH | 20 | DEW |
| SD | 16¾ | R |

Shipping Weight
Cube

Upholstery Requires
(Per Application):

Fabric: ½ Yard
(each, seat and back)
Leather: 9 Square Feet
(each, seat and back)
Total Required Each:
1 Yard or 18 Square Feet

Plastic Shell | Upholstered Seat and Inside Back | Metal Base

Product rated at 225 lbs.

SCS Indoor Advantage™ Certified

PLEASE SPECIFY THE FOLLOWING TO ORDER:

| | | | | | |
|--------------|--|--|---|---|--|
| MODEL NUMBER | TEXTILES: BACK Indicate fabric choice for back: <i>See options for fabrics at www.hbftextiles.com</i> | TEXTILES: SEAT Indicate fabric choice for seat: <i>See options for fabrics at www.hbftextiles.com</i> | FLAMMABILITY Indicate flammability: U = Cal 117 U3 = Cal 133 | BASE FINISH Options for metal finish: BL = Black Powder Coat BRS = Brass +\$65 | SHELL COLOR Options for plastic shell: GGRN = Green BL = Black GWHT = White SPNK = Sweet Pink |
| | | | | | |


HGG217-031.FabricBack.FabricSeat.Flammability.Base.Shell Example: HGG217-031.300-18.300-18.U.BRS.GGRN



Karina Specifications

Collection Details Guest Chair
 Wood Frame | Upholstered

Wood Options Frame available in Ash.
 Refer to HBF Standard Ash finishes for color selection. Finish selection must be noted on order.

| | List Prices | | | Sq.Ft. | Yards | Dimensions | | | | | | |
|--|-------------|------|---------|--------|-------------|------------|----|-------|----|--------|-----------------|--------|
| Karina HGJ208-011 | | | | | | | | | | | | |
|  | COM | 1790 | Grade F | 1870 | Leather I | 2195 | 27 | 1 1/2 | OH | 32 | AH | 27 |
| | COL | 1865 | Grade G | 1890 | Leather II | 2315 | | | OW | 24 | WBA | 20 1/2 |
| | Grade AA | 1765 | Grade H | 1915 | Leather III | 2435 | | | OD | 23 1/2 | DED | |
| | Grade A | 1780 | Grade J | 1930 | Leather IV | 2555 | | | SH | 19 | DEW | |
| | Grade B | 1800 | Grade K | 1965 | Leather V | 2675 | | | SD | 18 1/2 | R | |
| | Grade C | 1815 | Grade L | 2015 | Leather VI | 2795 | | | | | | |
| | Grade D | 1830 | Grade M | 2080 | | | | | | | Shipping Weight | 36 |
| | Grade E | 1850 | | | | | | | | | Cube | 24.7 |

Fully Upholstered Seat and Inside Back | Wood Outside Open Back | Ash Frame

LEVEL[®] Certified
 SCS Indoor Advantage[™] Certified

PLEASE SPECIFY THE FOLLOWING TO ORDER:

| MODEL NUMBER | TEXTILES | FLAMMABILITY | SPECIES & FINISH |
|--------------|---|---|---|
| | Indicate fabric choice: <i>See options for fabrics at www.hbftextiles.com</i> | Indicate flammability: U = Cal 117 U3 = Cal 133 | Options for wood finishes: AH = Ash 310 = Smoke Opaque 400 = Clear 402 = Black Opaque 403 = Grey Opaque 404 = Warm White Opaque 405 = Mist Opaque 406 = Denim Opaque 407 = Pewter Opaque 408 = Peppercorn Opaque 901 = Amber 902 = Designer White Opaque 911 = Warm Brick 929 = Nutmeg 937 = Bark 984 = Dark Roast 993 = Sumatra |

HGJ208-011.Fabric.Flammability.Wood Example: HGJ208-011.950-88.U.AH310

Nest Guest Seating Specifications

Wood Species

Frame available in Oak.

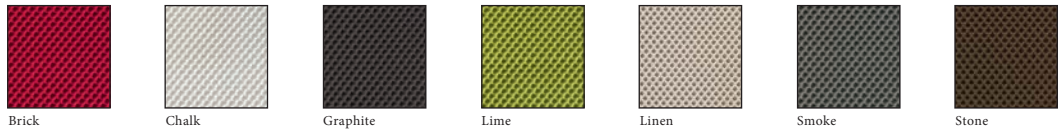
Refer to HBF Standard Oak finishes for color selection. Finish selection must be noted on order.

Metal Base

The elliptical tubular metal base is standard in a Black Powder Coat finish with an optional self-return swivel mechanism.

Woven Mesh

A semi-translucent polyester woven mesh is standard on the back of Nest Chairs. This 3D mesh material is an integral part of the design of the chair and alternate materials cannot be specified for the back upholstery. This material is available in seven standard colors. Color selection must be noted on order for each line item.



Tested for dimensional stability and load-bearing capacity, this material functions as a self-supporting surface for the chair back, and has passed ACT standards for flammability, colorfastness and physical properties as well as surpassing an abrasion test of 70,000 double rubs.

Welt

Welt is standard on Nest seating and available in seven colors that complement each of the woven mesh options. Welt color is determined by color of mesh specified on the order.

Seat Material

Complementing or contrasting seating upholstery may be specified in any fabric or leather available from HBF Textiles as well as COM or COL. All HBF Textiles products are graded into the List price as shown in this price list. (When specifying leather from HBF Textiles a one-hide minimum per order per colorway is required.)

Notes

If Nest chairs with the self-return swivel option are specified and intended to be used with an accompanying table, it should be noted that, depending on chair placement with relation to the table, the chair arm potentially may contact the table surface when self-return activates.

All Nest seating products meet ANSI/BIFMA structural testing standards. Nest seating is warranted under normal commercial office single shift use and conditions, which does not include high use areas, higher education, healthcare or hospitality environments.

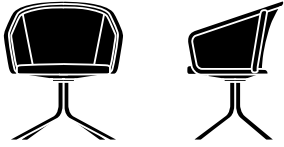


List Prices

Sq. Ft

Yards

Nest HGK211-011



| | | | | | |
|----------|------|---------|------|-------------|------|
| COM | 2279 | Grade F | 2279 | Leather I | 2444 |
| COL | 2354 | Grade G | 2294 | Leather II | 2504 |
| Grade AA | 2229 | Grade H | 2304 | Leather III | 2564 |
| Grade A | 2239 | Grade J | 2314 | Leather IV | 2624 |
| Grade B | 2244 | Grade K | 2329 | Leather V | 2684 |
| Grade C | 2254 | Grade L | 2354 | Leather VI | 2744 |
| Grade D | 2264 | Grade M | 2389 | | |
| Grade E | 2269 | | | | |

| | | | | |
|-------|-----|---|-----------------|---------|
| Seat: | 13½ | ¾ | OH 33 | AH 28 |
| | | | OW 28½ | WBA 19½ |
| | | | OD 23½ | DED |
| | | | SH 19 | DEW |
| | | | SD 18 | R |
| | | | Shipping Weight | 43 |
| | | | Cube | 24.7 |

Woven Mesh Back | Upholstered Seat | Oak Frame | Metal Base - Fixed - Black Powder Coat

LEVEL® Certified
SCS Indoor Advantage™ Certified

PLEASE SPECIFY THE FOLLOWING TO ORDER:

| MODEL NUMBER | BACK | TEXTILES | FLAMMABILITY | SPECIES & FINISH | BASE OPTION |
|--------------|--|---|---|---|--|
| | Indicate mesh color choice: <ul style="list-style-type: none"> BRK = Brick CHK = Chalk GPH = Graphite LIM = Lime LIN = Linen SMK = Smoke STN = Stone | Indicate fabric choice: <i>See options for fabrics at www.hbftextiles.com</i> | Indicate flammability: <ul style="list-style-type: none"> U = Cal 117 U3 = Cal 133 | Options for wood finishes: RK = Oak <ul style="list-style-type: none"> 310 = Smoke Opaque 400 = Clear 402 = Black Opaque 403 = Grey Opaque 404 = Warm White Opaque 405 = Mist Opaque 406 = Denim Opaque 407 = Pewter Opaque 408 = Peppercorn Opaque 901 = Amber 902 = Designer White Opaque 911 = Warm Brick 929 = Nutmeg 937 = Bark 984 = Dark Roast 993 = Sumatra | <ul style="list-style-type: none"> BFXBL = Base Fixed - Black Powder Coat BFXPSS = Base Fixed - Polished Stainless Steel +\$200 BFXWI = Base Fixed - White Powder Coat BSRBL = Base Self-Return - Black Powder Coat +\$92 BSRPSS = Base Self-Return - Polished Stainless Steel +\$292 BSRWI = Base Self-Return - White Powder Coat +\$92 |

HGK211-011.Back.Fabric.Flammability.Wood.Base

Example: HGK211-011.LIN.950-18.U.RK400.BSRBL

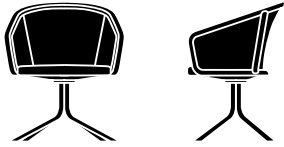


List Prices

Sq. Ft

Yards

Nest HGK211-021



Mesh 2414

| | | | |
|----|-----|-----|-----|
| OH | 33 | AH | 28 |
| OW | 28½ | WBA | 19½ |
| OD | 23½ | DED | |
| SH | 19 | DEW | |
| SD | 18 | R | |

| | |
|-----------------|----|
| Shipping Weight | 43 |
| Cube | 25 |

Woven Mesh Back and Seat | Oak Frame | Metal Base - Fixed - Black Powder Coat

LEVEL® Certified
SCS Indoor Advantage™ Certified

PLEASE SPECIFY THE FOLLOWING TO ORDER:

| MODEL NUMBER | BACK | SEAT | SPECIES & FINISH | BASE OPTION |
|--------------|--|--|---|--|
| | Indicate mesh color choice: <ul style="list-style-type: none"> BRK = Brick CHK = Chalk GPH = Graphite LIM = Lime LIN = Linen SMK = Smoke STN = Stone | Indicate mesh color choice: <ul style="list-style-type: none"> BRK = Brick CHK = Chalk GPH = Graphite LIM = Lime LIN = Linen SMK = Smoke STN = Stone | Options for wood finishes: RK = Oak <ul style="list-style-type: none"> 310 = Smoke Opaque 400 = Clear 402 = Black Opaque 403 = Grey Opaque 404 = Warm White Opaque 405 = Mist Opaque 406 = Denim Opaque 407 = Pewter Opaque 408 = Peppercorn Opaque 901 = Amber 902 = Designer White Opaque 911 = Warm Brick 929 = Nutmeg 937 = Bark 984 = Dark Roast 993 = Sumatra | <ul style="list-style-type: none"> BFXBL = Base Fixed - Black Powder Coat BFXPSS = Base Fixed - Polished Stainless Steel +\$200 BFXWI = Base Fixed - White Powder Coat BSRBL = Base Self-Return - Black Powder Coat +\$92 BSRPSS = Base Self-Return - Polished Stainless Steel +\$292 BSRWI = Base Self-Return - White Powder Coat +\$92 |

HGK211-021.Back.Seat.Wood.Base

Example: HGK211-021.LIN.LIN.RK400.BSRBL



November Specifications

Collection Details Guest Chair
 Upholstered

Base Finishes Black Powder Coat | White Powder Coat | Brushed Stainless Steel | Polished Stainless Steel | Ash

| | List Prices | | | | Sq. Ft. | Yards | Dimensions | | | | | |
|----------------------------|-------------|------|---------|------|-------------|-------|------------|---|--------------------|-----|-----|-----|
| November HGN113-081 | | | | | | | | | | | | |
| | COM | 1769 | Grade F | 1899 | Leather I | 2334 | 36 | 2 | OH | 30½ | AH | |
| | COL | 1844 | Grade G | 1929 | Leather II | 2494 | | | OW | 25½ | WBA | |
| | Grade AA | 1759 | Grade H | 1959 | Leather III | 2654 | | | OD | 24½ | DED | 21½ |
| | Grade A | 1784 | Grade J | 1984 | Leather IV | 2814 | | | SH | 17½ | DEW | 21½ |
| | Grade B | 1804 | Grade K | 2029 | Leather V | 2974 | | | SD | 17½ | R | 26¾ |
| | Grade C | 1829 | Grade L | 2094 | Leather VI | 3134 | | | Shipping Weight 36 | | | |
| | Grade D | 1849 | Grade M | 2184 | | | | | Cube 25 | | | |
| | Grade E | 1874 | | | | | | | | | | |
| | | | | | | | | | | | | |
| | | | | | | | | | | | | |

Fully Upholstered Seat and Back | Metal Base - Black Powder Coat - Self Return

Note: Please contact the HBF Client Experience Team (855-423-2020) or your sales rep for a list of approved textiles.


LEVEL® Certified
SCS Indoor Advantage™ Certified

PLEASE SPECIFY THE FOLLOWING TO ORDER: _____

| MODEL NUMBER | TEXTILES | FLAMMABILITY | SELF-RETURN BASE FINISH |
|--------------|---|---|--|
| | Indicate fabric choice: <i>See options for fabrics at www.hbftextiles.com</i> | Indicate flammability: <input type="checkbox"/> U = Cal 117 <input type="checkbox"/> U3 = Cal 133 | Options for metal finish: <input type="checkbox"/> BSRBL = Black Powder Coat <input type="checkbox"/> BSRBSS = Brushed Stainless Steel +\$100 <input type="checkbox"/> BSRPSS = Polished Stainless Steel +\$200 <input type="checkbox"/> BSRWI = White Powder Coat |
| | | | |

HGN113-081.Fabric.Flammability.Base Example: HGN113-081.950-88.U.BSRBL



| | | List Prices | | | Sq. Ft. | Yards | Dimensions | | | |
|--|----------|-------------|---------|------|-------------|-------|------------|---|-----------------|---------|
| November HGN113-101 | | | | | | | | | | |
|  | COM | 1567 | Grade F | 1697 | Leather I | 2132 | 36 | 2 | OH 30½ | AH |
| | COL | 1642 | Grade G | 1727 | Leather II | 2292 | | | OW 25½ | WBA |
| | Grade AA | 1557 | Grade H | 1757 | Leather III | 2452 | | | OD 24½ | DED 21½ |
| | Grade A | 1582 | Grade J | 1782 | Leather IV | 2612 | | | SH 17½ | DEW 21½ |
| | Grade B | 1602 | Grade K | 1827 | Leather V | 2772 | | | SD 17½ | R 26¾ |
| | Grade C | 1627 | Grade L | 1892 | Leather VI | 2932 | | | | |
| | Grade D | 1647 | Grade M | 1982 | | | | | | |
| | Grade E | 1672 | | | | | | | | |
| | | | | | | | | | Shipping Weight | 61 |
| | | | | | | | | | Cube | 24.7 |

Fully Upholstered Seat and Back | Ash Base

Quick Ship Program 

Note: Please contact the HBF Client Experience Team (855-423-2020) or your sales rep for a list of approved textiles.

LEVEL® Certified
SCS Indoor Advantage™ Certified

PLEASE SPECIFY THE FOLLOWING TO ORDER:

| MODEL NUMBER | TEXTILES | FLAMMABILITY | SPECIES & FINISH |
|--------------|---|---|---|
| | Indicate fabric choice: <i>See options for fabrics at www.hbftextiles.com</i> | Indicate flammability: <input type="checkbox"/> U = Cal 117 <input type="checkbox"/> U3 = Cal 133 | Options for wood finishes: AH = Ash <input type="checkbox"/> 310 = Smoke Opaque <input type="checkbox"/> 400 = Clear <input type="checkbox"/> 402 = Black Opaque <input type="checkbox"/> 403 = Grey Opaque <input type="checkbox"/> 404 = Warm White Opaque <input type="checkbox"/> 405 = Mist Opaque <input type="checkbox"/> 406 = Denim Opaque <input type="checkbox"/> 407 = Pewter Opaque <input type="checkbox"/> 408 = Peppercorn Opaque <input type="checkbox"/> 901 = Amber <input type="checkbox"/> 902 = Designer White Opaque <input type="checkbox"/> 911 = Warm Brick <input type="checkbox"/> 929 = Nutmeg <input type="checkbox"/> 937 = Bark <input type="checkbox"/> 984 = Dark Roast <input type="checkbox"/> 993 = Sumatra |


HGN113-101.Fabric.Flammability.Wood Example: HGN113-101.950-88.U.AH400



Ski Specifications

Collection Details Guest Chair
 Upholstered

Frame Finishes Black Powder Coat | White Powder Coat | Brushed Stainless Steel | Polished Stainless Steel

| | List Prices | | | Sq.Ft. | Yards | Dimensions | | | | | | |
|--|-------------|------|---------|--------|-------|------------|-------------|------|-----------------|-----|-----|----|
| Ski HGP212-011 | | | | | | | | | | | | |
|  | COM | 2053 | Grade F | 2258 | 49½ | 2¾ | OH | 32 | AH | 25 | | |
| | COL | 2128 | Grade G | 2303 | | | Leather I | 2858 | OW | 26¾ | WBA | 20 |
| | Grade AA | 2068 | Grade H | 2343 | | | Leather II | 3078 | OD | 25 | DED | |
| | Grade A | 2098 | Grade J | 2373 | | | Leather III | 3298 | SH | 19 | DEW | |
| | Grade B | 2133 | Grade K | 2438 | | | Leather IV | 3518 | SD | 18 | R | |
| | Grade C | 2163 | Grade L | 2528 | | | Leather V | 3738 | Shipping Weight | | | 49 |
| | Grade D | 2193 | Grade M | 2648 | | | Leather VI | 3958 | Cube | | | 25 |
| | Grade E | 2223 | | | | | | | | | | |
| | | | | | | | | | | | | |
| | | | | | | | | | | | | |

Fully Upholstered Seat, Back and Arm | Metal Frame - Black Powder Coat

LEVEL® Certified
 SCS Indoor Advantage™ Certified

PLEASE SPECIFY THE FOLLOWING TO ORDER: _____

| MODEL NUMBER | TEXTILES | FLAMMABILITY | BASE FINISH |
|--------------|--|---|---|
| | Indicate fabric choice: <i>See options for seat cushion fabrics at www.hbftextiles.com</i> | Indicate flammability: U = Cal 117 U3 = Cal 133 | Options for metal finish: BL = Black Powder Coat BSS = Brushed Stainless Steel +\$50 PSS = Polished Stainless Steel +\$100 WI = White Powder Coat |
| | | | |

HGP212-011.Fabric.Flammability.Base Example: HGP212-011.950-88.U.BL



Social Series Specifications

Collection Details Guest Chair
Upholstered

Frame Finishes Black Powder Coat | Polished Chrome





List Prices

Dimensions

Social HGS719-011



COM 1710

| | | | |
|----|-----|-----|-----|
| OH | 33½ | AH | 25 |
| OW | 22½ | WBA | 19¾ |
| OD | 23 | DED | |
| SH | 18¾ | DEW | |
| SD | 17 | R | |

Shipping Weight 47
Cube

Upholstered Seat, Back and Arm Cap | Metal Frame - Black Powder Coat

LEVEL® Certified
SCS Indoor Advantage™ Certified

Add upcharges to COM list for:

| Arm Cap Upholstery: | Back Upholstery: | Seat Upholstery: |
|---------------------|------------------|------------------|
| COL 25 | COL 25 | COL 25 |
| Grade AA 10 | Grade AA 25 | Grade AA 35 |
| Grade A 10 | Grade A 35 | Grade A 45 |
| Grade B 15 | Grade B 40 | Grade B 55 |
| Grade C 15 | Grade C 50 | Grade C 65 |
| Grade D 20 | Grade D 60 | Grade D 80 |
| Grade E 20 | Grade E 65 | Grade E 90 |
| Grade F 25 | Grade F 75 | Grade F 100 |
| Grade G 30 | Grade G 90 | Grade G 120 |
| Grade H 35 | Grade H 100 | Grade H 135 |
| Grade J 35 | Grade J 110 | Grade J 145 |
| Grade K 40 | Grade K 125 | Grade K 165 |
| Grade L 50 | Grade L 150 | Grade L 200 |
| Grade M 60 | Grade M 185 | Grade M 245 |
| Leather I 80 | Leather I 240 | Leather I 320 |
| Leather II 100 | Leather II 300 | Leather II 400 |
| Leather III 120 | Leather III 360 | Leather III 480 |
| Leather IV 140 | Leather IV 420 | Leather IV 560 |
| Leather V 160 | Leather V 480 | Leather V 640 |
| Leather VI 180 | Leather VI 540 | Leather VI 720 |

| Upholstery Requires (Per Application): | Upholstery Requires (Per Application): | Upholstery Requires (Per Application): |
|--|--|--|
| Fabric: ¼ Yards | Fabric: ¾ Yards | Fabric: 1 Yards |
| Leather: 4½ Sq. Ft. | Leather: 13½ Sq. Ft. | Leather: 18 Sq. Ft. |

Total Required Upholstery:

Fabric: 2 Yards
Leather: 36 Sq. Ft.

PLEASE SPECIFY THE FOLLOWING TO ORDER:

| MODEL NUMBER | TEXTILES | TEXTILES | TEXTILES | FLAMMABILITY | BASE FINISH |
|--------------|---|---|---|---|---|
| | Indicate fabric choice for: Arm Cap <i>See options for fabrics at www.hbftextiles.com</i> | Indicate fabric choice for: Back upholstery <i>See options for fabrics at www.hbftextiles.com</i> | Indicate fabric choice for: Seat upholstery <i>See options for fabrics at www.hbftextiles.com</i> | Indicate flammability: U = Cal 117 U3 = Cal 133 | Options for metal finish: BL = Black Powder Coat POL = Polished Chrome +\$200 |

HGS719-011.ArmCapFabric.BackFabric.SeatFabric.Flammability.Finish Example: HGS719-011.950-88.950-88.950.88.U.BL