



FOR EXTERNAL MOUNTING

TPS4 09 Surge Protection Devices

usa.siemens.com/surge

Product specifications

General specifications

Maximum surge current rating range	Standard - 130kA per phase
UL Type designation	SPD Type 1
UL 1449 I-nominal rating	20kA
UL 1449 short circuit current rating	200kA
Repetitive impulse	5,000 hits
Response time	< 1/2 ns

Physical specifications

Humidity range	0-95% non-condensing
Operating frequency	50-60Hz
Operating temperature	-35°C to +85°C
Dimensions in inches (mm)	5.02" (128) x 2.93" (74) x 3.25" (83)
Weight	1 lbs (454 g)
Typical connection	18" #12 AWG (pre-wired pig tails)
Enclosure	NEMA 4X Polycarbonate

Diagnostic monitoring specifications

Green LEDs per phase
Audible alarm
Form C dry contact, 240V, 5A

Design specifications

Custom MOV design for high energy handling in Category C locations
Thermally protected MOVs
External parallel connected for mounting next to electrical gear

SIEMENS

Model Number Catalog Logic

TPS4 09 SPD for External Mounting
General Suppressor Series

Catalog No. **TPS4** **09** **00**

Voltage Code

- A = 120/240 V, 1Ø, 3W
- B = 120/240 V, 3Ø, 4W
- C = 120/208 V, 3Ø, 4W
- W = 220/127 V, 3Ø, 4W
- D = 240 V, 3Ø, 3W
- E = 277/480 V, 3Ø, 4W
- F = 480 V, 3Ø, 3W
- G = 600 V, 3Ø, 3W
- K = 380/220 V, 3Ø, 4W
- L = 600/347 V, 3Ø, 4W
- S = 400/230 V, 3Ø, 4W
- T = 415/240 V, 3Ø, 4W

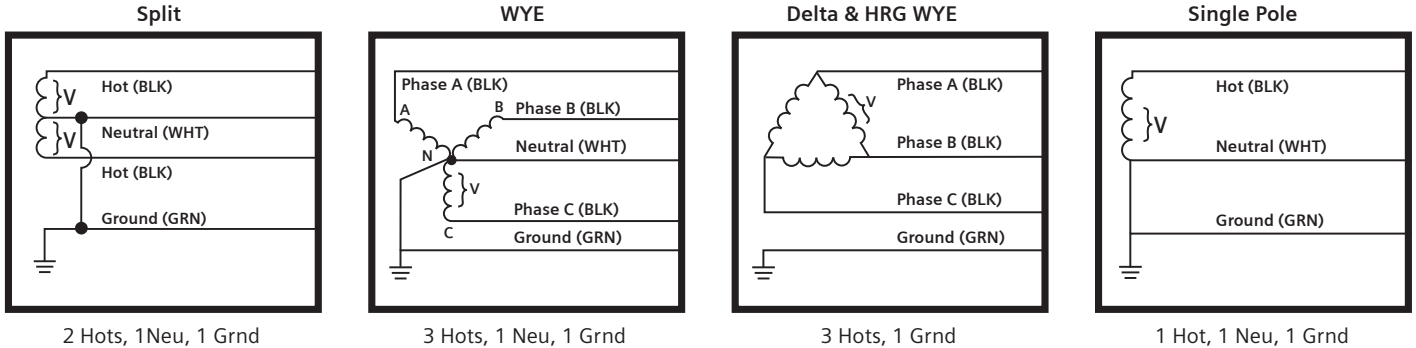
Surge Current (kA)

13 = 130 kA per phase

D = Dry Contact & Audible Alarm (Standard)

Available for field retrofit in P1 panels.
When an option is not selected, include a **zero (0)** in the field.

Wiring Configurations



Requirements are changing for SPDs. The 2020 National Electric Code (NEC) is requiring SPDs in more locations as standard engineering practice. These include residential main distribution panels and commercial / industrial applications for the following equipment: emergency systems (Article 700.8), elevators, dumbwaiters, escalators, moving walks, platform lifts, and stairway chairlifts (Article 620), critical operations data systems (Article 645), Industrial Machinery (Article 670), and fire pumps (Article 695).

TPS4 09

Voltage Code	System Voltage	L-N	L-G	L-L	N-G	MCOV
A	120/240V, 1Ø, 3W*	700	700	1200	600	180
B	240/120V, 3Ø, 4W	700/900	700/900	1200	700	180/275
C	208Y/120V, 3Ø, 4W	600	700	1000	500	150
W	220/127V, 3Ø, 4W	700	700	1200	600	150
D	240V, 3Ø, 3W	-	1000	1200	-	275
E	480Y/277V, 3Ø, 4W	1200	1000	2000	1000	320
F	480V, 3Ø, 3W	-	1800	1800	-	550
G	600V, 3Ø, 3W	-	2000	2500	-	680
K	380Y/220V, 3Ø, 4W	1200	1000	2000	1000	320
L	600Y/347V, 3Ø, 4W	1500	1500	2500	1500	440
S	400Y/230V, 3Ø, 4W	1200	1000	2000	1000	320
T	415Y/240V, 3Ø, 4W	1200	1000	2000	1000	320

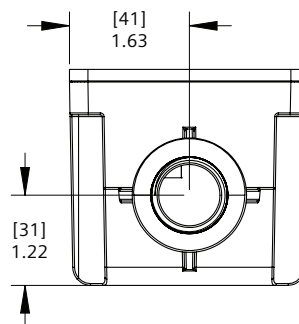
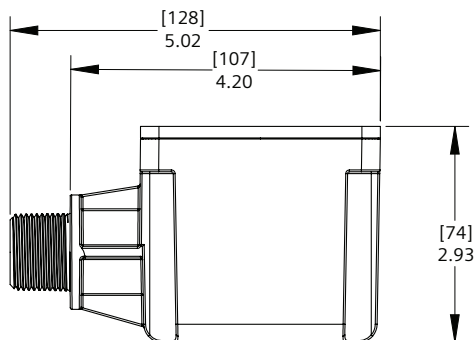
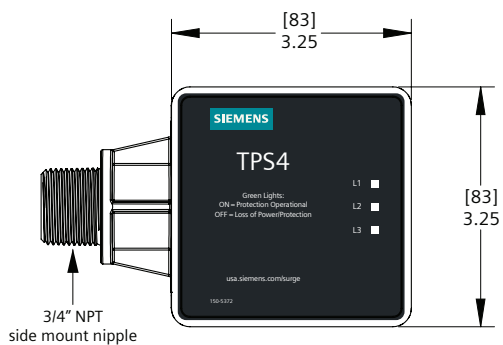
* Can also be used on 208Y/120V, 1Ø, 3W System

Standards compliance and certifications

UL 1449 5th Edition, cUL, UL1283, ANSI/IEEE C62.41.1-2002, C62.41.2-2002, C62.45-2002, NEC Article 285

ISO 9001:2014 Quality Management System, ISO 17025:2007 Laboratory Certification (UL DAP Program), 100% Quality Tested prior to shipping

Product Diagram [in millimeters] and inches



Legal Manufacturer

Siemens Industry, Inc.
3617 Parkway Ln
Peachtree Corners, GA 30092
United States of America

Telephone: +1 (800) 333-7421
www.usa.siemens.com/surge

Order No. RPF-TPS409-0723
© 07.2023, Siemens Industry, Inc.

This document contains a general description of available technical options only, and its effectiveness will be subject to specific variables including field conditions and project parameters. Siemens does not make representations, warranties, or assurances as to the accuracy or completeness of the content contained herein. Siemens reserves the right to modify the technology and product specifications in its sole discretion without advance notice.