

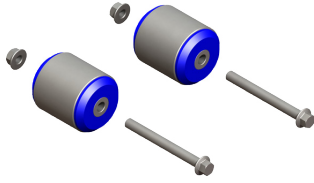
KEY REPLACEMENT PARTS BY ATRO®

INTERNATIONAL®

ATRO PARTS

ENGINEERED | DURABLE | RELIABLE
MANUFACTURED IN ST. CLAIR, MISSOURI | U.S.A.

UNDER HOOD



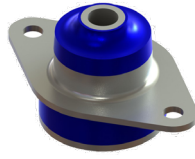
CM55-61454

3444147C91, 3574670C91,
3574671C91, 3589599C91,
3844147C91



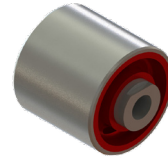
CM55-614C4

3512064C4



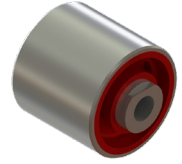
CM55-615C2

3515345C1, 3515345C2



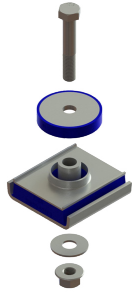
CM55-616C5-HT

3595976C4, 3595976C5



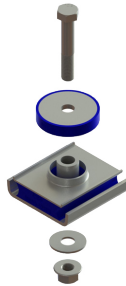
CM55-61980-HT

3595980, 3595980C1,
3595980C2, 3595980C3,
3595980C4



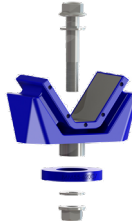
MM55-62002

Upper/Snubber: 1664726C2
Lower: 1664724C1, 1664724C2,
1664724C3



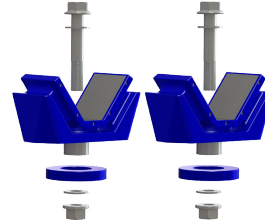
MM55-62003

Upper/Snubber: 1664726C2
Lower: 1664723C1, 1664723C2,
1664723C3



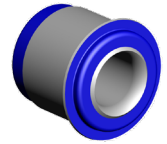
MM55-62004

Upper: 1664729C1,
1664729C2, 1664729C3,
1664729C4, 1664729C5,
1664729C7
Lower: 1664730C5,
1664730C7, 20147772C2



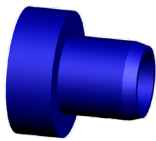
MM55-62005

Upper: 1664729C1,
1664729C2, 1664729C3,
1664729C4, 1664729C5,
1664729C7
Lower: 1664730C5,
1664730C7, 20147772C2



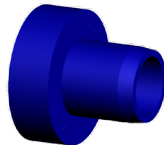
PL1048

503579C1, 503837C1,
507569C91



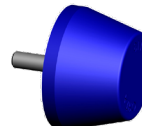
PL1055

1811, 470031C2, EE14003053



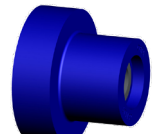
PL1104

14003052, 4170, 479237C1,
583955C1



PL1113

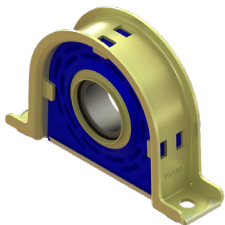
472697C1



PL1136

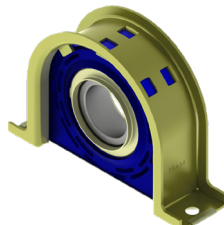
476869C1

OTHER



CR00-67121

2101211X



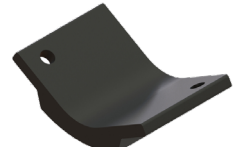
CR00-67825

283071C93, CB2106611XSA



HL55-64C91

16899930C91



WP55-290C1

571960C1

KEY REPLACEMENT PARTS BY ATRO®

INTERNATIONAL®

ATRO PARTS
 ENGINEERED | DURABLE | RELIABLE
 MANUFACTURED IN ST. CLAIR, MISSOURI | U.S.A.

For a complete selection of OE Replacement Parts and Torque Rods, Please visit ATROBUSHING.COM

| ATRO PART NUMBER | INTERNATIONAL PART NUMBER | DESCRIPTION |
|------------------|---|---------------------------------------|
| CM55-61454 | Bracket Assy: 3444147C91, 3574670C91, 3574671C91, 3589599C91, 3844147C91 Bushing: 3574678C1, 3574680C1 | Cab Mount Bushing Kit (set of 2) |
| CM55-614C4 | 3512064C4 | Cab Mount/Insulator (Front) |
| CM55-615C2 | 3515345C1, 3515345C2 | Cab Mount/Insulator (Front) |
| CM55-616C5-HT | 3595976C4, 3595976C5 | Cab Mount, High Temperature ONLY |
| CM55-61980-HT | 3595980, 3595980C1, 3595980C2, 3595980C3, 3595980C4 | Cab Mount, High Temperature ONLY |
| CR00-67121 | 2101211X | Carrier Bearing Assembly, Series 1710 |
| CR00-67825 | 283071C93, CB2106611XSA | Carrier Bearing Assembly, Series 1810 |
| HL55-64C91 | 16899930C91 | Hood Latch Kit |
| MM55-62002 | Upper/Snubber: 1664726C2 Lower: 1664724C1, 1664724C2, 1664724C3 | Motor Mount Kit (Front) |
| MM55-62003 | Upper/Snubber: 1664726C2 Lower: 1664723C1, 1664723C2, 1664723C3 | Motor Mount Kit (Front) |
| MM55-62004 | Upper Mount : 1664729C1, 1664729C2, 1664729C3, 1664729C4, 1664729C5, 1664729C7 Lower Mount: 1664730C5, 1664730C7, 20147772C2 | Motor Mount Kit (Rear) |
| MM55-62005 | Upper Mount : 1664729C1, 1664729C2, 1664729C3, 1664729C4, 1664729C5, 1664729C7 Lower Mount: 1664730C5, 1664730C7, 20147772C2 | Motor Mount Kit (Rear) |
| PL1048 | 503579C1, 503837C1, 507569C91 | Motor Mount |
| PL1055 | 1811, 470031C2, EE14003053 | Motor Mount |
| PL1104 | 14003052, 4170, 479237C1, 583955C1 | Motor Mount |
| PL1113 | 472697C1 | Hood Bumper |
| PL1136 | 476869C1 | Radiator Mount |
| WP55-290C1 | 571960C1 | Wear Pad |

ATRO
ENGINEERED SYSTEMS

POLYURETHANE PARTS | SOLUTIONS FOR HEAVY TRUCKS
 ATROBUSHING.COM
 ©2019 ATRO ENGINEERED SYSTEMS, INC.

6 Bolte Lane
 St. Clair, Missouri 63077 | U.S.A.
 (800) 325.6114 | Fax (866) 920.2005

ATRO Engineered Systems, Inc. is not liable for any errors herein. All manufacturers' names and part numbers are used without permission; no endorsement, affiliation, or recommendation is implied. They are included for reference purposes only.