



**Nylon Protective Sleeve**

**LifeGuard® 3000, 4000 and 5000**



Descr.	Prod. No.	A Inside Flat	B Sleeve I.D.	Weight (Lbs.)
		"	"	
14LG3K	7277-1850	1.11	.71	.07
14LG4K	7277-1960	1.38	.88	.10
14LG5K	7277-1950	1.38	.88	.96
16LG3K	7277-1851	1.42	.91	.08
16LG4K	7277-1961	1.62	1.03	.11
16LG5K	7277-1951	1.62	1.03	.11
20LG3K	7277-1852	1.67	1.06	.09
20LG4K	7277-1962	1.91	1.22	.13
20LG5K	7277-1952	1.91	1.22	.13
22LG3K	7277-1853	2.13	1.35	.09
22LG4K	7277-1963	1.98	1.26	.15
22LG5K	7277-1953	2.13	1.35	.15
26LG3K	7277-1854	2.36	1.50	.18
26LG4K	7277-1964	2.50	1.59	.17
26LG5K	7277-1954	2.50	1.59	.17
32LG3K	7277-1855	2.78	1.99	.20
32LG4K	7277-1965	2.78	1.99	.19

**LifeGuard® Clamp Collars - Stainless Steel**



Descr.	Prod. No.	⊖	Weight (Lbs.)
		"	
6SC-4-SS	7334-48535	1.15	.01
8SC-4-SS	7334-48545	1.40	.06
10SC-4-SS	7334-48605	1.62	.14
12SC-4-SS	7334-48615	1.87	.10
16SC-4-SS	7334-48665	2.37	.05

**LifeGuard® Tools**

Prod. No.	Descr.	Weight (Lbs.)
7484-1600	LifeGuard Sleeve Guide Table	.25
7482-1604	LifeGuard Sleeve Bullets -4, -6, -8	.23

- HOSE
- HOSE/CPLG. SELECTION
- G8K COUPLINGS
- GLOBAL SPIRAL COUPLINGS
- PCM / PCS FERRULES
- MEGACRIMP COUPLINGS
- STAINLESS STEEL
- POWER CRIMP COUPLINGS
- LOC, GL AND GLP COUPLINGS
- POLARSEAL COUPLINGS
- POLARSEAL II COUPLINGS
- C14 COUPLINGS
- PCTS THERMOPLASTIC COUPLINGS
- FIELD ATTACHABLE G1 & G2 COUPLINGS
- FIELD ATTACHABLE C5 & C5E COUPLINGS
- SURELOK AIR BRAKE COUPLINGS
- ADAPTERS
- QUICK DISCONNECT COUPLERS
- LIVE SWIVEL
- BALL VALVES
- ACCESSORIES
- EQUIPMENT AND PARTS



**Nylon Protective Sleeve**

**Clamp Collar for Nylon Sleeve and LifeGuard® Sleeve**



Descr.	Prod. No.	⊖	Weight (Lbs.)
		"	
4SC1	7334-60035	.86	.03
4SC-1 XBULK	7334-6003	.86	.03
4SC-2 XBULK	7334-6001	.81	.01
6SC-1	7334-60125	1.0	.02
6SC-1 XBULK	7334-6012	1.0	.02
6SC-3	7334-60145	1.05	.02
6SC-3 XBULK	7334-6014	1.05	.02
6SC-4	7334-60155	1.15	.02
6SC-4 XBULK	7334-6015	1.15	.02
8PC-SC	7334-60315	1.18	.02
8SC-1 XBULK	7334-6031	1.18	.02
8SC-4	7334-60555	1.62	.02
8SC-4 XBULK	7334-6055	1.62	.02
10PC-SC	7334-60515	1.26	.03
10SC-1	7334-60545	1.40	.02
10SC-1 XBULK	7334-6054	1.40	.01
10SC-2 XBULK	7334-6051	1.26	.03
10SC-4 XBULK	7334-6056	2.37	.03
10SC-4	7334-60565	2.37	.03
12SC-1	7334-60755	1.62	.03
12SC-1 XBULK	7334-6075	1.62	.03
12SC-2	7334-60715	1.45	.03
12SC-2 XBULK	7334-6071	1.45	.03
12SC-4	7334-60575	1.87	.04
12SC-4 XBULK	7334-6057	1.87	.04
16SC-1	7334-60845	2.06	.04
16SC-1 XBULK	7334-6084	2.06	.04
16SC-4	7334-60585	1.40	.04
16SC-4 XBULK	7334-6058	1.40	.04

HOSE
HOSE/CPLG. SELECTION
G8K COUPLINGS
GLOBAL SPIRAL COUPLINGS
PCM / PCS FERRULES
MEGACRIMP COUPLINGS
STAINLESS STEEL
POWER CRIMP COUPLINGS
LOC, GL AND GLP COUPLINGS
POLARSEAL COUPLINGS
POLARSEAL II COUPLINGS
C14 COUPLINGS
PCTS THERMOPLASTIC COUPLINGS
FIELD ATTACHABLE G1 & G2 COUPLINGS
FIELD ATTACHABLE C5 & C5E COUPLINGS
SURELOK AIR BRAKE COUPLINGS
ADAPTERS
QUICK DISCONNECT COUPLERS
LIVE SWIVEL
BALL VALVES
ACCESSORIES
EQUIPMENT AND PARTS



**Nylon Protective Sleeve**

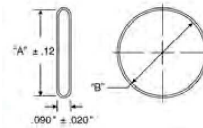
**Nylon Protective Sleeve**

Do not use the Nylon Sleeve where ambient temperatures exceed 250°F.

Description: Gates® Nylon Sleeves perform a dual role: (1) they provide excellent abrasion resistance to protect individual hose; and (2) they can be used to bundle several hose assemblies together for maximum protection. Downtime and maintenance costs are reduced. These Nylon Sleeves are unique because they form an extra protective layer against abrasive forces. Specifically, thousands of tiny Nylon filaments, woven into the texturized yarn, "friz" into a self-renewing shield that is extremely resistant to severe abrasion. This nylon sleeving has MSHA flame-resistance approval. Add 1/8" for installation.



Determining the Size of a Sleeve  
B = Nominal I.D. + "A" x 2 ± 3.14



Descr.	Prod. No.	A Inside Flat	B Sleeve I.D.	Weight (Lbs.)
		"	"	
HG-10	7277-1067	1.07	.68	.06
HG-14	7277-1010	1.42	.90	.04
HG-16	7277-1011	1.67	1.06	.05
HG-20	7277-1012	1.92	1.22	.06
HG-24	7277-1013	2.24	1.42	.06
HG-26	7277-1377	2.50	1.59	.07
HG-28	7277-1014	2.85	1.81	.08
HG-32	7277-1015	3.44	2.19	.10
HG-38	7277-1016	3.74	2.38	.10
HG-42	7277-1018	4.12	2.62	.09
HG-46	7277-1024	4.53	2.88	.10
HG-64	7277-1276	6.91	4.40	.21

NOTE: Be sure to heat the cut edges of the Nylon Hose Sleeve. You may have to use a banded clamp or nylon tie to fasten the sleeve securely.

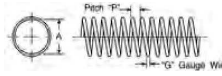
- HOSE
- HOSE/CPLG. SELECTION
- G8K COUPLINGS
- GLOBAL SPIRAL COUPLINGS
- PCM / PCS FERRULES
- MEGACRIMP COUPLINGS
- STAINLESS STEEL
- POWER CRIMP COUPLINGS
- LOC, GL AND GLP COUPLINGS
- POLARSEAL COUPLINGS
- POLARSEAL II COUPLINGS
- C14 COUPLINGS
- PCTS THERMOPLASTIC COUPLINGS
- FIELD ATTACHABLE G1 & G2 COUPLINGS
- FIELD ATTACHABLE C5 & C5E COUPLINGS
- SURELOK AIR BRAKE COUPLINGS
- ADAPTERS
- QUICK DISCONNECT COUPLERS
- LIVE SWIVEL
- BALL VALVES
- ACCESSORIES
- EQUIPMENT AND PARTS



**Hose Guards**

**Plated Wire Spring Guards**

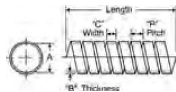
Description: For proper spring guard selection compare the outside diameter of the hose to the inside diameter of the spring guard. Allow 1/32" for installation.



Descr.	Prod. No.	A (+.015)	G	P	Weight (Lbs.)
		"	"	"	
35/64" RSG-25FT	7277-0521	.550	14 (.080)	7/32	.16
11/16" RSG-25FT	7277-0535	.682	16 (.065)	7/32	.41
47/64" RSG-25FT	7277-0511	.738	14 (.080)	7/32	.22
49/64" RSG-25FT	7277-0510	.676	14 (.080)	7/32	.19
55/64" RSG-25FT	7277-0512	.852	14 (.080)	7/32	.23
59/64" RSG-25FT	7277-0513	.915	14 (.080)	7/32	.27
63/64" RSG-25FT	7277-0514	.977	14 (.080)	7/32	.26
1 3/64" RSG-25FT	7277-0515	1.040	14 (.080)	7/32	.30
1 1/8" RSG-25FT	7277-0522	1.122	14 (.080)	7/32	.15
1 9/32" RSG-25FT	7277-0516	1.278	11 (.120)	11/32	.50
1 11/32" RSG-25FT	7277-0517	1.340	11 (.120)	11/32	.55
1 37/64" RSG-25FT	7277-0518	1.578	11 (.120)	11/32	.65
1 5/8" RSG-25FT	7277-0519	1.625	11 (.120)	11/32	.70
1 27/32" RSG-10FT	7277-0524	1.847	14 (.080)	13/32	.35
2 7/64" RSG-7FT	7277-0523	2.112	14 (.080)	13/32	.30
2 1/8" RSG-7FT	7277-0548	2.120	11 (.120)	11/32	.82

**Plated Flat Armor Spring Guards**

Description: For proper spring guard selection compare the outside diameter of the hose to the inside diameter of the spring guard. Allow 1/32" for installation.



Descr.	Prod. No.	A (+.015)	B	C	P	Weight (Lbs.)
		"	"	"	"	
35/64" FSG-25FT	7277-0500	.550	.019	3/8	1/2	.14
39/64" FSG-25FT	7277-0533	.609	.032	1/4	3/8	.10
21/32" FSG-25FT	7277-0501	.656	.019	3/8	1/2	.17
22/32" FSG-25FT	7277-0502	.719	.019	3/8	1/2	.14
51/64" FSG-25FT	7277-0534	.797	.032	3/8	1/2	.22
13/16" FSG-25FT	7277-0503	.812	.028	1/4	3/8	.20
7/8" FSG-25FT	7277-0504	.875	.028	1/2	5/8	.22
61/64" FSG-25FT	7277-0505	.953	.028	1/2	5/8	.24
1 3/32" FSG-25FT	7277-0530	1.093	.028	1/2	5/8	.20
1 7/32" FSG-25FT	7277-0507	1.219	.028	1/2	5/8	.29
1 9/32" FSG-25FT	7277-0508	1.281	.028	1/2	5/8	.32
1 3/8" FSG-25FT	7277-0532	1.375	.028	1/2	5/8	.20
1 9/16" FSG-25FT	7277-0520	1.562	.028	1/2	5/8	.39
1 5/8" FSG-25FT	7277-0509	1.625	.028	1/2	5/8	.40
1 11/16" FSG-5FT	7277-0529	1.687	.028	1/2	5/8	.50
1 51/64" FSG-15FT	7277-0525	1.797	.028	1/2	5/8	.52
1 27/32" FSG-15FT	7277-0531	1.844	.028	1/2	5/8	.35
1" FSG-25FT	7277-0506	1.000	.028	1/2	5/8	.25
2 3/32" FSG-10FT	7277-0527	2.093	.028	1/2	5/8	.63
2 11/32" FSG-5FT	7277-0528	2.343	.028	1/2	5/8	.63



**Hose Guards**

**Plated Flat Armor Spring Guards - Continued**

Descr.	Prod. No.	A (+.015)	B	C	P	Weight (Lbs.)
		"	"	"	"	
2 7/8" FSG-5FT	7277-0526	2.875	.028	1/2	5/8	.65

**Plastic Protective Coil Sleeves**

Description: Economical, lightweight plastic sleeving protects hose from water, air, gasoline and hydraulic fluids. Effective temperature range from -40°F to +250°F (-40°C to +121°C).



Descr.	Prod. No.	A Coil I.D.	B Strip Width	Thickness	Weight (Lbs.)
		"	"	"	
1/4" CS1151-100FT	7277-1151	1/4	1/4	.040	.09
3/8" CS1152-100FT	7277-1152	3/8	1/4	.040	.09
1/2" CS1153-100FT	7277-1153	1/2	3/8	.070	.09
5/8" CS1154-50FT	7277-1154	5/8	3/8	.070	.09
3/4" CS1155-50FT	7277-1155	3/4	3/8	.070	.09
1 3/8" CS1157-25FT	7277-1157	1 3/8	5/8	.115	.09
1 7/8" CS1158-25FT	7277-1158	1 7/8	5/8	.115	.09
1" CS1156-50FT	7277-1156	1	5/8	.115	.55

- HOSE
- HOSE/CPLG. SELECTION
- G8K COUPLINGS
- GLOBAL SPIRAL COUPLINGS
- PCM / PCS FERRULES
- MEGACRIMP COUPLINGS
- STAINLESS STEEL
- POWER CRIMP COUPLINGS
- LOC, GL AND GLP COUPLINGS
- POLARSEAL COUPLINGS
- POLARSEAL II COUPLINGS
- C14 COUPLINGS
- PCTS THERMOPLASTIC COUPLINGS
- FIELD ATTACHABLE G1 & G2 COUPLINGS
- FIELD ATTACHABLE C5 & C5E COUPLINGS
- SURELOK AIR BRAKE COUPLINGS
- ADAPTERS
- QUICK DISCONNECT COUPLERS
- LIVE SWIVEL
- BALL VALVES
- ACCESSORIES
- EQUIPMENT AND PARTS



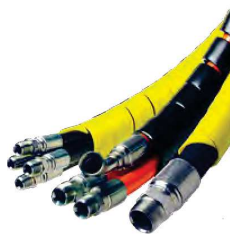
**Hose Guards**

**PolySleeve™ High Density Polyethylene Hose Wrap - Black**

Description: Gates® PolySleeve™ is a spiral wrap designed to protect or bundle hose for appearance and safety. PolySleeve™ protects hose from chaffing, rubbing, crushing, ultraviolet rays and other hazards that cause hose failures. It can be an easy and economical way to protect equipment, reduce downtime, improve sighting and improve overall appearance. PolySleeve™ can be installed easily - even after the hose assembly or assemblies are in place. The edges are rounded, so installers won't cut their hands. Just wrap a section of Gates PolySleeve™ in the abrasion area or wrap it around any number of hose for better appearance or safety. It is offered in either black or yellow in a full range of sizes.

This product is made of heavy-wall, high-density polyethylene (HDPE) and has a wide temperature range. At -40°F it starts to become somewhat brittle, and at 280°F it starts to become soft. After temperature is normalized, PolySleeve™ returns to its original state quickly. PolySleeve™ is made with an anti-static material, so it won't build up a static charge.

Features Advantages: Available in two colors (black and yellow), multiple sizes for individual hose or bundling. Comes with rounded edges both inside and out for added safety. Easy to install before or after assembly fabrication or installation. Effective temperature range from -40°F to 280°F (-40°C to 130°C). Guards against harsh environmental conditions for reduced downtime. Safe, affordable protection for hydraulic and pneumatic lines.



Descr.	Prod. No.	Coil I.D.	Fits Max. Hose O.D.	Fits Min. Hose O.D.	Wall Thickness	Width	Weight (Lbs.)
		"	"	"			
6PSB POLY SLEEVE	7277-1174	.38	.52	.38	.060	3/8	.04
8PSB POLY SLEEVE	7277-1175	.50	.64	.52	.070	9/16	.05
12PSB POLY SLEEVE	7277-1176	.63	.85	.63	.080	5/8	.07
16PSB POLY SLEEVE	7277-1177	.84	1.08	.86	.080	7/8	.09
20PSB POLY SLEEVE	7277-1178	1.06	1.35	1.10	.100	15/16	.11
24PSB POLY SLEEVE	7277-1179	1.34	1.74	1.36	.120	1 3/16	.16
28PSB POLY SLEEVE	7277-1180	1.73	2.18	1.75	.120	1 7/16	.27
36PSB POLY SLEEVE	7277-1181	2.17	2.61	2.19	.160	1 1/2	.41
44PSB POLY SLEEVE	7277-1182	2.60	3.11	2.62	.180	1 11/16	.55
48PSB POLY SLEEVE	7277-1183	3.10	3.95	3.12	.220	1 7/8	.78
56PSB POLY SLEEVE	7277-1184	3.90	4.25	3.95	.220	2 1/4	.99
72PSB POLY SLEEVE	7277-0001	4.33	12	4.35	.220	1 3/8	1.08

**PolySleeve™ High Density Polyethylene Hose Wrap - Yellow**

Descr.	Prod. No.	Coil I.D.	Fits Max. Hose O.D.	Fits Min. Hose O.D.	Wall Thickness	Width	Weight (Lbs.)
		"	"	"			
6PSY POLY SLEEVE	7277-1185	.38	.52	.38	.060	3/8	.04
8PSY POLY SLEEVE	7277-1186	.50	.64	.52	.070	9/16	.05
12PSY POLY SLEEVE	7277-1187	.63	.85	.63	.080	5/8	.07
16PSY POLY SLEEVE	7277-1188	.84	1.08	.86	.080	7/8	.09
20PSY POLY SLEEVE	7277-1189	1.06	1.35	1.10	.100	15/16	.11
24PSY POLY SLEEVE	7277-1190	1.34	1.74	1.36	.120	1 3/16	.18
28PSY POLY SLEEVE	7277-1191	1.73	2.18	1.75	.120	1 7/16	.25
36PSY POLY SLEEVE	7277-1192	2.17	2.61	2.19	.160	1 1/2	.41
44PSY POLY SLEEVE	7277-1193	2.60	3.11	2.62	.180	1 11/16	.55
48PSY POLY SLEEVE	7277-1194	3.10	3.95	3.12	.220	1 7/8	.71
56PSY POLY SLEEVE	7277-1195	3.90	4.25	3.95	.220	2 1/4	.96

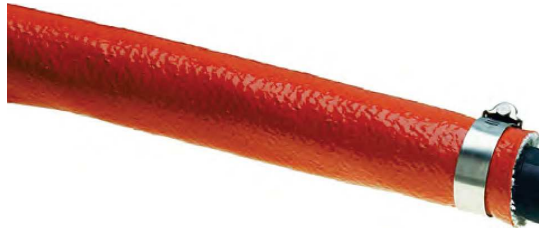


**Hose Guards**

**HeatGuard® Protective Sheathing**

Description: Best of all, HeatGuard can pay for itself in reduced replacement and maintenance costs. It is available in two grades - HeatGuard and HeatGuard Hi-Temp. Contact Hose Product Application for details. HeatGuard is a completely not-asbestos, heat-resistant, protective sheathing. It goes on easily over most hose and couplings, with only hose clamps or wire ties required for fastening. Nominal wall thickness - 0.135".

Temperature Range: HeatGuard coated fiberglass; meets SAE AS1072A specification; temperature range: -65°F to +500°F (-54°C to +260°C).



Descr.	Prod. No.	Inside Diameter	Weight (Lbs.)
		"	
HTG-4	7277-1571	.25	.07
HTG-5	7277-1572	.31	.07
HTG-6	7277-1573	.38	.09
HTG-7	7277-1574	.44	.09
HTG-8	7277-1575	.50	.10
HTG-9	7277-1576	.56	.10
HTG-10	7277-1577	.62	.11
HTG-11	7277-1578	.69	.12
HTG-12	7277-1579	.75	.13
HTG-13	7277-1580	.81	.13
HTG-14	7277-1581	.88	.14
HTG-15	7277-1582	.94	.15
HTG-16	7277-1196	1.00	.16
HTG-18	7277-1197	1.12	.18
HTG-20	7277-1583	1.25	.18
HTG-22	7277-1584	1.38	.22
HTG-24	7277-1585	1.50	.24
HTG-26	7277-1586	1.62	.25
HTG-28	7277-1587	1.75	.28
HTG-30	7277-1588	1.88	.28
HTG-32	7277-1589	2.00	.30
HTG-34	7277-1590	2.12	.33
HTG-36	7277-1591	2.25	.32
HTG-38	7277-1592	2.38	.36
HTG-40	7277-1593	2.50	.35
HTG-44	7277-1595	2.75	.41
HTG-56	7277-1600	3.00	.53
HTG-64	7277-1602	4.00	.55

- HOSE
- HOSE/CPLG. SELECTION
- G8K COUPLINGS
- GLOBAL SPIRAL COUPLINGS
- PCM / PCS FERRULES
- MEGACRIMP COUPLINGS
- STAINLESS STEEL
- POWER CRIMP COUPLINGS
- LOC, GL AND GLP COUPLINGS
- POLARSEAL COUPLINGS
- POLARSEAL II COUPLINGS
- C14 COUPLINGS
- PCTS THERMOPLASTIC COUPLINGS
- FIELD ATTACHABLE G1 & G2 COUPLINGS
- FIELD ATTACHABLE C5 & C5E COUPLINGS
- SURELOK AIR BRAKE COUPLINGS
- ADAPTERS
- QUICK DISCONNECT COUPLERS
- LIVE SWIVEL
- BALL VALVES
- ACCESSORIES
- EQUIPMENT AND PARTS

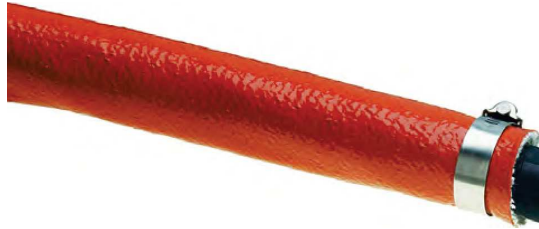


**Hose Guards**

**HeatGuard® High-Temp Protective Sheathing**

Description: HeatGuard Hi-Temp is a completely not-asbestos, heat-resistant, protective sleeving. It goes on easily over most hose and couplings, with only hose clamps or wire ties required for fastening. Nominal wall thickness - 0.142". It is available in two grades - HeatGuard and HeatGuard Hi-Temp. Contact Hose Product Application for details.  
It is available in two grades - HeatGuard and HeatGuard Hi-Temp. Contact Hose Product Application for details.

Temperature Range: HeatGuard Hi-Temp is braided, coated fiberglass; meets SAE AS1072E specification; temperature range: -65°F to +500°F (-54°C to +260°C) for continuous exposure, up to 2000°F (1093°C) for 15-20 minutes and up to 3000°F (1650°C) for 15-30 seconds.



Descr.	Prod. No.	Inside Diameter	Weight (Lbs.)
		"	
24-HTGH	7277-1611	1.50	.30
28-HTGH	7277-1612	1.75	.02
34-HTGH	7277-1613	2.12	.02
52-HTGH	7277-1616	3.25	.02

**HeatGuard® Tape**

Description: HeatGuard Tape is designed to provide a non-adhesive insulating wrap that can be used as a substitute for HeatGuard protective sheathing, offering resistance to molten metal splash, radiant heat, abrasion, corrosive atmosphere, moisture, chemicals, vibration and electricity. HeatGuard Tape is white knitted fiberglass yarn woven in a flat strip and coated on one side with iron oxide red silicone rubber with a nominal thickness of 0.147".

Temperature Range: Rated for 500°F (260°C) continuous exposure, up to 2000°F (1093°C) for 15-20 minutes and up to 3000°F (1650°C) for 15-30 seconds.



Descr.	Prod. No.	Weight (Lbs.)
HTG 3-INCH WIDE HEATGUARD TAPE	7277-0012	.04
HTG 4-INCH WIDE HEATGUARD TAPE	7277-0013	.05
HTG 5-INCH WIDE HEATGUARD TAPE	7277-0014	.06
HTG-1 INCH WIDE HEATGUARD TAPE	7277-0010	.05
HTG-2 INCH WIDE HEATGUARD TAPE	7277-0011	.03

HOSE
HOSE/CPLG. SELECTION
G8K COUPLINGS
GLOBALSPIRAL COUPLINGS
PCM / PCS FERRULES
MEGACRIMP COUPLINGS
STAINLESS STEEL
POWER CRIMP COUPLINGS
LOC, GL AND GLP COUPLINGS
POLARSEAL COUPLINGS
POLARSEAL II COUPLINGS
C14 COUPLINGS
PCTS THERMOPLASTIC COUPLINGS
FIELD ATTACHABLE G1 & G2 COUPLINGS
FIELD ATTACHABLE C5 & C5E COUPLINGS
SURELOK AIR BRAKE COUPLINGS
ADAPTERS
QUICK DISCONNECT COUPLERS
LIVE SWIVEL
BALL VALVES
ACCESSORIES
EQUIPMENT AND PARTS





**Vinyl Bend Restrictor**

### Vinyl Bend Restrictor - Red

Description: Gates® tapered PVC sleeve reduces bending stress in the hose near the coupling to prevent damage, such as in power wash applications. Installed during hose assembly, this smoothly-finished product withstands temperatures from -40°F to +200°F (-40°C to +93°C).

Features Advantages: Friction Fit; no adhesives or clamps required to hold bend restrictor in place on hose assembly. Saves assembly cost. Smooth finish will not scratch finish on equipment being washed. Attractive appearance enhances look of quality. Tapered design reduces bending stress neat the hose-coupling junction so extra long, more trouble-free hose life can be expected. Wide temperature helps give extra long service life for both hot and cold power wash assemblies.

Descr.	Prod. No.	Inside Diameter	Length	Hose Size and Type	Weight (Lbs.)
		"	"		
HBR1097	7277-10975	.76	7.00	6G2	.14
HBR1097 XBULK	7277-1097	.76	7.00	6G2	.14
HBR1098	7277-10985	.91	7.00	8PC2500	.11
HBR1098 XBULK	7277-1098	.91	7.00	8PC2500	.20

### Vinyl Bend Restrictor - Black

Description: Gates® tapered PVC sleeve reduces bending stress in the hose near the coupling to prevent damage, such as in power wash applications. Installed during hose assembly, this smoothly-finished product withstands temperatures from -40°F to +200°F (-40°C to +93°C).

Features Advantages: Friction Fit; no adhesives or clamps required to hold bend restrictor in place on hose assembly. Saves assembly cost. Smooth finish will not scratch finish on equipment being washed. Attractive appearance enhances look of quality. Tapered design reduces bending stress neat the hose-coupling junction so extra long, more trouble-free hose life can be expected. Wide temperature helps give extra long service life for both hot and cold power wash assemblies.



Descr.	Prod. No.	Inside Diameter	Length	Hose Size and Type	Weight (Lbs.)
		"	"		
HBR1050	7277-10505	.63	5.5	4G1, 4G1H, 4G2, 4M3K, 4M2T, 4PC3500	.10
HBR1050 XBULK	7277-1050	.63	5.5	4G1, 4G1H, 4G2, 4M3K, 4M2T, 4PC3500	.10
HBR1051	7277-10515	.73	6.0	6G1, 6G1H, 6M3K, 6M2T, 6PC3000, 6PC4000, 4PC6000	.13
HBR1051 XBULK	7277-1051	.73	6.0	6G1, 6G1H, 6M3K, 6M2T, 6PC3000, 6PC4000, 4PC6000	.08
HBR1052	7277-10525	.84	7.00	8G1, 8G1H, 6PC5000	.16
HBR1052 XBULK	7277-1052	.84	7.00	8G1, 8G1H, 6PC5000	.16
HBR1053	7277-10535	1.00	8.0	10G1, 10G1H, 10M2T	.26
HBR1053 XBULK	7277-1053	1.00	8.0	10G1, 10G1H, 10M2T	.26
HBR1054	7277-10545	.77	7.00	6G2	.14
HBR1054 XBULK	7277-1054	.77	7.00	6G2	.14
HBR1055	7277-10555	.53	5.3	4TH7/4TH7NC	.07
HBR1055 XBULK	7277-1055	.53	5.3	4TH7/4TH7NC	.02
HBR1056	7277-10905	.91	7.00	8PC2500	.02

- HOSE
- HOSE/CPLG. SELECTION
- G8K COUPLINGS
- GLOBAL SPIRAL COUPLINGS
- PCM / PCS FERRULES
- MEGACRIMP COUPLINGS
- STAINLESS STEEL
- POWER CRIMP COUPLINGS
- LOC, GL AND GLP COUPLINGS
- POLARSEAL COUPLINGS
- POLARSEAL II COUPLINGS
- C14 COUPLINGS
- PCTS THERMOPLASTIC COUPLINGS
- FIELD ATTACHABLE G1 & G2 COUPLINGS
- FIELD ATTACHABLE C5 & C5E COUPLINGS
- SURELOK AIR BRAKE COUPLINGS
- ADAPTERS
- QUICK DISCONNECT COUPLERS
- LIVE SWIVEL
- BALL VALVES
- ACCESSORIES
- EQUIPMENT AND PARTS

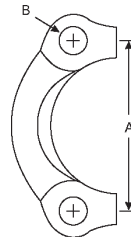


**Flange Fittings**

HOSE
HOSE/CPLG. SELECTION
G8K COUPLINGS
GLOBAL SPIRAL COUPLINGS
PCM / PCS FERRULES
MEGACRIMP COUPLINGS
STAINLESS STEEL
POWER CRIMP COUPLINGS
LOC. GL AND GLP COUPLINGS
POLARSEAL COUPLINGS
POLARSEAL II COUPLINGS
C14 COUPLINGS
PCTS THERMOPLASTIC COUPLINGS
FIELD ATTACHABLE G1 & G2 COUPLINGS
FIELD ATTACHABLE C5 & C5E COUPLINGS
SURELOK AIR BRAKE COUPLINGS
ADAPTERS
QUICK DISCONNECT COUPLERS
LIVE SWIVEL
BALL VALVES
ACCESSORIES
EQUIPMENT AND PARTS

**Flange Half Sets (Code 61 - SAE J518)**

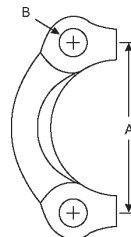
Each set contains 2 flange halves, 1 O-Ring and 4 bolts (Grade 8) with lock washers.



Descr.	Prod. No.	Nom. Flg. Size	A	B	Weight (Lbs.)
		"	"	"	
8CFHS	7253-07015	1/2	1.50	.34	.40
12CFHS	7253-07025	3/4	1.88	.41	.60
16CFHS	7253-07035	1	2.06	.41	.72
20CFHS	7253-07045	1 1/4	2.31	.47	1.10
24CFHS	7253-07055	1 1/2	2.75	.53	2.48
32CFHS	7253-07065	2	3.06	.53	1.64
40CFHS	7253-01305	2 1/2	3.50	.54	2.50
48CFHS	7253-01315	3	4.19	.66	4.00
56CFHS	7253-01325	3 1/2	4.75	.66	4.00
64CFHS	7253-01335	4	4.75	.66	4.75

**Flange Half Sets (Code 62 - SAE J518)**

Each set contains 2 flange halves, 1 O-Ring and 4 bolts (Grade 8) with lock washers.



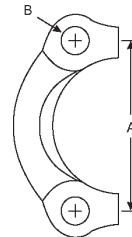
Descr.	Prod. No.	Nom. Flg. Size	A	B	Weight (Lbs.)
		"	"	"	
8FHHS	7253-09775	1/2	1.55	.34	.03
12FHHS	7253-09785	3/4	2.00	.41	.95
16FHHS	7253-09795	1	2.25	.47	1.60
20FHHS	7253-09805	1 1/4	2.63	.53	2.50
24FHHS	7253-09815	1 1/2	3.13	.66	4.40
32FHHS	7253-09825	2	3.81	.78	6.87



**Flange Fittings**

**Caterpillar-Style Flange Half Sets**

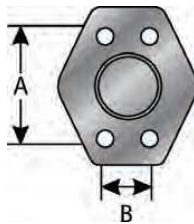
Each set contains 2 flange halves, 1 O-Ring and 4 bolts (Grade 8) with lock washers.



Descr.	Prod. No.	Nom. Flg. Size	A	B	Weight (Lbs.)
		"	"	"	
12CATFHS	7253-37025	3/4	2.00	.41	1.51
16CATFHS	7253-37035	1	2.25	.47	1.20
20CATFHS	7253-37045	1 1/4	2.63	.53	1.80
24CATFHS	7253-37055	1 1/2	3.13	.66	4.25
32CATFHS	7253-37065	2	3.81	.78	6.80

**Code 61 Flange Cap**

For maintenance use only. Not to be used under pressure.



Descr.	Prod. No.	Nom. Flg. Size	A	B	Weight (Lbs.)
		"	"	"	
12FL-CAP	7253-66115	3/4	1.88	.41	.50
16FL-CAP	7253-66125	1	2.06	.41	.55
20FL-CAP	7253-66135	1 1/4	2.31	.47	.80
24FL-CAP	7253-66145	1 1/2	2.75	.53	1.10
32FL-CAP	7253-66155	2	3.06	.53	1.40

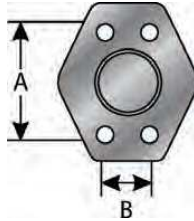
- HOSE
- HOSE/CPLG. SELECTION
- G8K COUPLINGS
- GLOBAL SPIRAL COUPLINGS
- PCM / PCS FERRULES
- MEGACRIMP COUPLINGS
- STAINLESS STEEL
- POWER CRIMP COUPLINGS
- LOC. GL AND GLP COUPLINGS
- POLARSEAL COUPLINGS
- POLARSEAL II COUPLINGS
- C14 COUPLINGS
- PCTS THERMOPLASTIC COUPLINGS
- FIELD ATTACHABLE G1 & G2 COUPLINGS
- FIELD ATTACHABLE C5 & C5E COUPLINGS
- SURELOK AIR BRAKE COUPLINGS
- ADAPTERS
- QUICK DISCONNECT COUPLERS
- LIVE SWIVEL
- BALL VALVES
- ACCESSORIES
- EQUIPMENT AND PARTS



**Flange Fittings**

**Code 62 Flange Cap**

For maintenance use only. Not to be used under pressure.



Descr.	Prod. No.	Nom. Flg. Size	A	B	Weight (Lbs.)
		"	"	"	
12FLH-CAP	7253-66165	3/4	2.00	.41	.65
16FLH-CAP	7253-66175	1	2.25	.47	.80
20FLH-CAP	7253-66185	1 1/4	2.63	.53	1.10
24FLH-CAP	7253-66195	1 1/2	3.13	.66	1.80
32FLH-CAP	7253-66205	2	3.81	.78	2.60

- HOSE
- HOSE/CPLG. SELECTION
- G8K COUPLINGS
- GLOBALSPIRAL COUPLINGS
- PCM / PCS FERRULES
- MEGACRIMP COUPLINGS
- STAINLESS STEEL
- POWER CRIMP COUPLINGS
- LOC. GL AND GLP COUPLINGS
- POLARSEAL COUPLINGS
- POLARSEAL II COUPLINGS
- C14 COUPLINGS
- PCTS THERMOPLASTIC COUPLINGS
- FIELD ATTACHABLE G1 & G2 COUPLINGS
- FIELD ATTACHABLE C5 & C5E COUPLINGS
- SURELOK AIR BRAKE COUPLINGS
- ADAPTERS
- QUICK DISCONNECT COUPLERS
- LIVE SWIVEL
- BALL VALVES
- ACCESSORIES
- EQUIPMENT AND PARTS



**O-Rings**

**O-Rings for Code 61, Code 62, and Caterpillar-Style Flange Fittings**

90 Durometer Hardness.



Descr.	Prod. No.	Inside Diameter	Wall	Weight (Lbs.)
		"	"	
8 FLANGE O-RING	7254-0001	3/4	.139	.02
10 FLANGE O-RING	7254-0142	55/64	.139	.03
12 FLANGE O-RING	7254-0007	1.00	.139	.02
16 FLANGE O-RING	7254-0009	1 5/16	.139	.02
20 FLANGE O-RING	7254-0011	1 1/2	.139	.02
24 FLANGE O-RING	7254-0013	1 7/8	.139	.02
32 FLANGE O-RING	7254-0015	2 1/4	.139	.02
40 FLANGE O-RING	7254-0133	2 3/4	.139	.05
48 FLANGE O-RING	7254-0134	3 3/8	.139	.05
56 FLANGE O-RING	7254-0135	3 7/8	.139	.05
64 FLANGE O-RING	7254-0136	4 3/8	.139	.15

**O-Rings for Straight Thread Boss Fittings**

90 Durometer Hardness.



Descr.	Prod. No.	Inside Diameter	Wall	Weight (Lbs.)
		"	"	
3 O-RING	7254-0003	19/64	1/16	.02
4 O-RING	7254-0004	11/32	5/64	.01
5 O-RING	7254-0005	13/32	5/64	.02
6 O-RING	7254-0006	15/32	5/64	.01
8 O-RING	7254-0008	41/64	3/32	.01
10 O-RING	7254-0010	3/4	3/32	.02
12 O-RING	7254-0012	59/64	7/64	.01
14 O-RING	7254-0014	1 3/64	7/64	.02
16 O-RING	7254-0016	1 11/64	7/64	.02
20 O-RING	7254-0020	1 15/32	7/64	.02

- HOSE
- HOSE/CPLG. SELECTION
- G8K COUPLINGS
- GLOBAL SPIRAL COUPLINGS
- PCM / PCS FERRULES
- MEGACRIMP COUPLINGS
- STAINLESS STEEL
- POWER CRIMP COUPLINGS
- LOC. GL AND GLP COUPLINGS
- POLARSEAL COUPLINGS
- POLARSEAL II COUPLINGS
- C14 COUPLINGS
- PCTS THERMOPLASTIC COUPLINGS
- FIELD ATTACHABLE G1 & G2 COUPLINGS
- FIELD ATTACHABLE C5 & C5E COUPLINGS
- SURELOK AIR BRAKE COUPLINGS
- ADAPTERS
- QUICK DISCONNECT COUPLERS
- LIVE SWIVEL
- BALL VALVES
- ACCESSORIES
- EQUIPMENT AND PARTS



**O-Rings**

HOSE

HOSE/CPLG. SELECTION

G8K COUPLINGS

GLOBALSPIRAL COUPLINGS

PCM / PCS FERRULES

MEGACRIMP COUPLINGS

STAINLESS STEEL

POWER CRIMP COUPLINGS

LOC, GL AND GLP COUPLINGS

POLARSEAL COUPLINGS

POLARSEAL II COUPLINGS

C14 COUPLINGS

PCTS THERMOPLASTIC COUPLINGS

FIELD ATTACHABLE G1 & G2 COUPLINGS

FIELD ATTACHABLE C5 & C5E COUPLINGS

SURELOK AIR BRAKE COUPLINGS

ADAPTERS

QUICK DISCONNECT COUPLERS

LIVE SWIVEL

BALL VALVES

ACCESSORIES

EQUIPMENT AND PARTS

## O-Rings for Flat-Face Fittings

90 Durometer Hardness.

Caution: DO NOT USE these O-Rings with phosphate esters, diesters or phosphate ester emulsion hydraulic fluids. Instead, use O-Rings made of Viton, EPDM or CPE polymers or other materials compatible with the fluids.  
These O-Rings are compounded from a Nitrile polymer for use with petroleum-base hydraulic fluids, water and glycol and oil-water emulsions.



Descr.	Prod. No.	Reference Coupling	Arp. No.	Weight (Lbs.)
		"		
4 O-RING FF	7254-0125	1/4	011	.01
6 O-RING FF	7254-0126	3/8	012	.01
8 O-RING FF	7254-0127	1/2	014	.01
10 O-RING FF	7254-0128	5/8	016	.01
12 O-RING FF	7254-0129	3/4	018	.01
16 O-RING FF	7254-0130	1	021	.01
20 O-RING FF	7254-0131	1 1/4	025	.01
24 O-RING FF	7254-0132	1 1/2	029	.04

NOTE: Standard O-Ring number.

## O-Rings for British Standard Parallel Pipe (BSPP Couplings)

70 Durometer Hardness.



Descr.	Prod. No.	Inside Diameter	Wall	Weight (Lbs.)
		mm	mm	
4 O-RING FBSPP	7254-1166	5.5	1.0	.01
6 O-RING FBSPP	7254-1154	7.1	1.6	.01
8 O-RING FBSPP	7254-1157	11.1	1.6	.01
10 O-RING FBSPP	7254-1159	12.1	1.6	.01
12 O-RING FBSPP	7254-1162	15.1	1.6	.01
16 O-RING FBSPP	7254-1164	20.1	1.6	.01
20 O-RING FBSPP	7254-1165	27.1	1.6	.01



**O-Rings**

**O-Rings for DIN Heavy Series (PC, PCM & PCS Couplings)**

70 Durometer Hardness.



Descr.	Prod. No.	Inside Diameter	Wall	Weight (Lbs.)
		mm	mm	
8 O-RING DIN H	7254-0154	6.0	1.5	.01
10 O-RING DIN H	7254-0151	7.1	1.6	.01
12 O-RING DIN H	7254-0153	9.1	1.6	.11
14 O-RING DIN H	7254-0150	10.5	1.8	.01
16 O-RING DIN H	7254-0149	11.9	1.8	.01
20 O-RING DIN H	7254-0152	16.6	2.4	.01
25 O-RING DIN H	7254-0144	21.6	2.4	.02
30 O-RING DIN H	7254-0146	27.6	2.4	.02
38 O-RING DIN H	7254-0145	34.6	2.4	.02

**O-Rings for DIN Light & Heavy Series (MegaCrimp® and GlobalSpiral™ Couplings)**

70 Durometer Hardness.



Descr.	Prod. No.	Inside Diameter	Wall	Weight (Lbs.)
		mm	mm	
15/16 O-RING DIN L/H	7254-0200	12.0	2.0	.01
6 O-RING DIN H	7254-0206	4.0	1.5	.01
8 O-RING DIN H	7254-0207	6.0	1.5	.01
10 O-RING DIN H	7254-0208	7.5	1.5	.01
12 O-RING DIN H	7254-0209	9.0	1.5	.01
14 O-RING DIN H	7254-1132	10.0	2.0	.01
18 O-RING DIN L	7254-0201	15.0	2.0	.01
20 O-RING DIN H	7254-0210	16.3	2.4	.01
22 O-RING DIN L	7254-0202	20.0	2.0	.01
25 O-RING DIN H	7254-0211	20.3	2.4	.01
28 O-RING DIN L	7254-0203	26.0	2.0	.01
30 O-RING DIN H	7254-0212	25.3	2.4	.02
35 O-RING DIN L	7254-0204	32.0	2.5	.01
38 O-RING DIN H	7254-0213	33.3	2.4	.02
42 O-RING DIN L	7254-0205	38.0	2.5	.02

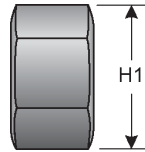
- HOSE
- HOSE/CPLG. SELECTION
- G8K COUPLINGS
- GLOBALSPIRAL COUPLINGS
- PCM / PCS FERRULES
- MEGACRIMP COUPLINGS
- STAINLESS STEEL
- POWER CRIMP COUPLINGS
- LOC, GL AND GLP COUPLINGS
- POLARSEAL COUPLINGS
- POLARSEAL II COUPLINGS
- C14 COUPLINGS
- PCTS THERMOPLASTIC COUPLINGS
- FIELD ATTACHABLE G1 & G2 COUPLINGS
- FIELD ATTACHABLE C5 & C5E COUPLINGS
- SURELOK AIR BRAKE COUPLINGS
- ADAPTERS
- QUICK DISCONNECT COUPLERS
- LIVE SWIVEL
- BALL VALVES
- ACCESSORIES
- EQUIPMENT AND PARTS




**Tube Nuts and Sleeves**

**Tube Sleeve Nut**

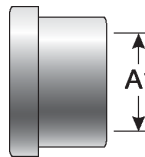
For use up to SAE 100R2 maximum working pressure.



Descr.	Prod. No.	A1		H1	Weight (Lbs.)
		"	"	"	
2TSN	7259-06805	1/8	5/16-24	3/8	.01
3TSN	7259-78295	3/16	3/8-24	1/4	.11
4TSN	7259-01105	1/4	7/16-20	9/16	.02
5TSN	7259-01115	5/16	1/2-20	5/8	.03
6TSN	7259-01125	3/8	9/16-18	11/16	.04
8TSN	7259-01135	1/2	3/4-16	7/8	.07
10TSN	7259-01145	5/8	7/8-14	1	.09
12TSN	7259-01155	3/4	1 1/16-12	1 1/4	.17
14TSN	7259-01165	7/8	1 3/16-12	1 3/8	.20
16TSN	7259-01175	1	1 5/16-12	1 1/2	.22
20TSN	7259-01185	1 1/4	1 5/8-12	2	.55
32TSN	7259-09055	2	2 1/2-12	2 7/8	1.19

**Tube Sleeve**

For use up to SAE 100R2 maximum working pressure.



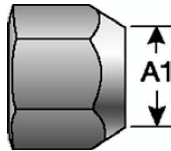
Descr.	Prod. No.	A1	Weight (Lbs.)
		"	
3TS	7259-78275	3/16	.10
4TS	7259-23905	1/4	.10
5TS	7259-23915	5/16	.10
6TS	7259-23925	3/8	.03
8TS	7259-23935	1/2	.10
10TS	7259-23945	5/8	.02
12TS	7259-23955	3/4	.04
14TS	7259-23965	7/8	.03
16TS	7259-23975	1	.04
20TS	7259-23985	1 1/4	.05
24TS	7259-23995	1 1/2	.14
32TS	7259-24005	2	.27






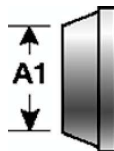
**Tube Nuts and Sleeves**

**Female Flareless Nut**



Descr.	Prod. No.	A1		H1	Weight (Lbs.)
		"	"	"	
4FFN	7334-40495	1/4	7/16-20	9/16	.30
5FFN	7334-40505	5/16	1/2-20	5/8	.30
6FFN	7334-40515	3/8	9/16-18	11/16	.30
8FFN	7334-40425	1/2	3/4-16	7/8	.30
10FFN	7334-40525	5/8	7/8-14	1	.30
12FFN	7334-40535	3/4	1 1/16-12	1 1/4	.30
16FFN	7334-40545	1	1 5/16-12	1 1/2	.30

**Female Flareless Sleeve**




Descr.	Prod. No.	A1	Weight (Lbs.)
		"	
4FFS	7334-40555	1/4	.03
5FFS	7334-40565	5/16	.30
6FFS	7334-40575	3/8	.30
8FFS	7334-40435	1/2	.05
10FFS	7334-40585	5/8	.30
12FFS	7334-40595	3/4	.30
16FFS	7334-40605	1	.30

**Locknuts for Bulkhead Fittings**

For use up to SAE 100R2 maximum working pressure.



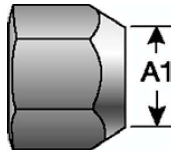
Descr.	Prod. No.		H1	Weight (Lbs.)
		"	"	
5LN	7253-24615	1/2-20	3/4	.10
8LN-SH	7259-24635	3/4-16	1	.10
16LN-SH	7259-24665	1 5/16-12	1 5/8	.10

- HOSE
- HOSE/CPLG. SELECTION
- G8K COUPLINGS
- GLOBALSPIRAL COUPLINGS
- PCM / PCS FERRULES
- MEGACRIMP COUPLINGS
- STAINLESS STEEL
- POWER CRIMP COUPLINGS
- LOC. GL AND GLP COUPLINGS
- POLARSEAL COUPLINGS
- POLARSEAL II COUPLINGS
- C14 COUPLINGS
- PCTS THERMOPLASTIC COUPLINGS
- FIELD ATTACHABLE G1 & G2 COUPLINGS
- FIELD ATTACHABLE C5 & C5E COUPLINGS
- SURELOK AIR BRAKE COUPLINGS
- ADAPTERS
- QUICK DISCONNECT COUPLERS
- LIVE SWIVEL
- BALL VALVES
- ACCESSORIES
- EQUIPMENT AND PARTS



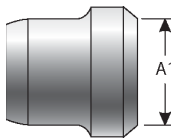
**Tube Nuts and Sleeves**

**Metric Bite Nut**



Descr.	Prod. No.	A1		Weight (Lbs.)
		"	mm	
6MNH	7253-27115	M14X1.5	6.0	.05
6MNL	7253-27105	M12X1.5	6.0	.13
8MNH	7253-27135	M16X1.5	8.0	.04
8MNL	7253-27125	M14X1.5	8.0	.03
10MNH	7253-27155	M18X1.5	10.0	.10
10MNL	7253-27145	M16X1.5	10.0	.05
12MNH	7253-27175	M20X1.5	12.0	.10
12MNL	7253-27165	M18X1.5	12.0	.05
14MNH	7253-27195	M22X1.5	14.0	.10
15MNL	7253-27185	M22X1.5	15.0	.05
16MNH	7253-27205	M24X1.5	16.0	.02
18MNL	7253-27215	M26X1.5	18.0	.15
20MNH	7253-27225	M30X1.5	20.0	.25
22MNL	7253-27235	M30X1.5	22.0	.20
25MNH	7253-27245	M36X1.5	25.0	.46
28MNL	7253-27255	M36X1.5	28.0	.20
30MNH	7253-27265	M42X1.5	30.0	.47
35MNL	7253-27275	M45X1.5	35.0	.30
38MNH	7253-27285	M52X1.5	38.0	.70
42MNL	7253-27295	M52X1.5	42.0	.48

**Metric Bite Sleeve**



Descr.	Prod. No.	A1		Weight (Lbs.)
		"	mm	
6BS	7253-26815	6.0	.01	
8BS	7253-26835	8.0	.23	
10BS	7253-26855	10.0	.02	
12BS	7253-26875	12.0	.01	
14BS	7253-26895	14.0	.32	
15BS	7253-26905	15.0	.01	
16BS	7253-26915	16.0	.36	
18BS	7253-26925	18.0	.02	
20BS	7253-26935	20.0	.02	
22BS	7253-26945	22.0	.02	
25BS	7253-26955	25.0	.03	
28BS	7253-26965	28.0	.48	
30BS	7253-26975	30.0	.03	
35BS	7253-26985	35.0	.05	



**Tube Nuts and Sleeves**

Metric Bite Sleeve - Continued

Descr.	Prod. No.	A1	Weight (Lbs.)
		mm	
38BS	7253-26995	38.0	.06
42BS	7253-27005	42.0	.06

- HOSE
- HOSE/CPLG. SELECTION
- G8K COUPLINGS
- GLOBAL SPIRAL COUPLINGS
- PCM / PCS FERRULES
- MEGACRIMP COUPLINGS
- STAINLESS STEEL
- POWER CRIMP COUPLINGS
- LOC. GL AND GLP COUPLINGS
- POLARSEAL COUPLINGS
- POLARSEAL II COUPLINGS
- C14 COUPLINGS
- PCTS THERMOPLASTIC COUPLINGS
- FIELD ATTACHABLE G1 & G2 COUPLINGS
- FIELD ATTACHABLE C5 & C5E COUPLINGS
- SURELOK AIR BRAKE COUPLINGS
- ADAPTERS
- QUICK DISCONNECT COUPLERS
- LIVE SWIVEL
- BALL VALVES
- ACCESSORIES
- EQUIPMENT AND PARTS



**Diagnostic**

**Diagnostic Equipment**

Descr.	Prod. No.	Weight (Lbs.)
RFID BAND TAG - ORANGE	7485-2110	.01
RFID KEY TAG - ORANGE	7485-2120	.07
RFID LANYARD TAG 12 IN ORANGE	7485-2130	.06
RFID LANYARD TAG 24 IN. - ORANGE	7485-2140	.07
RFID LANYARD TAG 36 IN ORANGE	7485-2150	.06

HOSE
HOSE/CPLG. SELECTION
G8K COUPLINGS
GLOBAL SPIRAL COUPLINGS
PCM / PCS FERRULES
MEGACRIMP COUPLINGS
STAINLESS STEEL
POWER CRIMP COUPLINGS
LOC, GL AND GLP COUPLINGS
POLARSEAL COUPLINGS
POLARSEAL II COUPLINGS
C14 COUPLINGS
PCTS THERMOPLASTIC COUPLINGS
FIELD ATTACHABLE G1 & G2 COUPLINGS
FIELD ATTACHABLE C5 & C5E COUPLINGS
SURELOK AIR BRAKE COUPLINGS
ADAPTERS
QUICK DISCONNECT COUPLERS
LIVE SWIVEL
BALL VALVES
ACCESSORIES
EQUIPMENT AND PARTS