

APRIL

A FLOCK OF HAPPINESS

Off went her hat gripped by a harsh March wind. Higher and higher it rose into the air. Suddenly, it stopped and spun like a top, then like a parachute it slowly descended. Adeline watched it closely, for it was her new Easter hat. Happiness? Yes a flock of it. Adeline's hat, and five gleeful lassies were off again in an Overland Touring car.

Being an observation by Fred'k E. Rein, president of the Rein Motor Company of Riverside in the county of Burlington and State of New Jersey, vendors of Overland and Willys-Knight cars and topnotcher used cars.

The Days of Poor Richard
(continued from page 4)

people in England are set against the practice. You would be sure to get the worst of it. The old general is a favorite of the king. He is booked for knighthood. If you were to kill his son in the present state of feeling here, your neck would be in danger. If you were to injure him you would have to make a lucky escape, or go to prison. It is not a pleasant outlook for one who is engaged to an English girl. He has a great advantage over you."

Captain Preston went with Solomon Binkus next day to the address on the card of Lieutenant Clarke. It was the house of the general, who was waiting with his son in the reception room. They walked together to the Amack club. The general was self-contained. It would seem that his bad opinion of Yankees was not quite so comprehensive as it had been. The whole proceeding went forward with the utmost politeness.

"General, Mr. Binkus and John Irons, Jr., are my friends," said Captain Preston.

"Indeed!" the general answered.

"Yes, and they are friends of England. They saved my neck in America. I have assured young Irons that your words, if they were correctly reported to me, were spoken in haste, and that they do not express your real opinion."

"And what, sir, were the words reported to you?" the general asked.

Preston repeated them.

"That is my opinion."

"It is mine also," young Clarke declared.

Solomon's face changed quickly. He took deliberate aim at the enemy and dravled:

"Can't be yer opinion is with more than the lives o' these young fellers that's got'n to fight."

"Gentlemen, you will save time by dropping all thought of apologies," said the general.

"Then it only remains for you to choose your weapons and agree with us as to time and place," said Preston.

"I choose pistols," said the young Britisher. "The time and place may suit your convenience, so it be soon and not too far away."

"Let us say the cow wallow on Shooters' hill, near the oaks, at sunrise tomorrow," Preston proposed.

"I agree," the lieutenant answered.

"Whatever comes of it, let us have secrecy and all possible protection from each side to the other when the affair is ended," said Preston.

"I agree to that also," was the answer of young Clarke.

When they were leaving, Solomon said to Preston: "That 'ere general is as big as a dollar."

(Continued next week)

CHIROPRACTIC TALK No. 4

"Chiropractic Removes the Cause of Disease"



RIVERSIDE CHIROPRACTOR

What brings health? Not the treating of effects, but the removing of the CAUSE of disease brings health.

Dr. Alfred Walton, founder of the Essex County Hospital, indorses Chiropractic because it is the only method which removes the cause of disease; and thousands of men and women throughout the country are living testimonials to the benefits they have experienced after taking Spinal Adjustments.

Drugs deaden pain, but they cannot remove the cause of the pain; surgery may cut out a diseased part of the body, but it cannot remove that which caused the diseased condition. The cause of abnormal condition—sickness, weakness, distortion—is nerve pressure somewhere between the brain and the rest of the body. In 95% of cases nerve pressure is found at the spine, where one or more vertebrae have become slightly misaligned.

Consider the fact that untold numbers of people have suffered with the same ailment you have, and have found relief through Chiropractic and you will see why you should at least investigate. Come to my office now, before your trouble has gone too far.

Lynn W. Frye, D.C.

CHIROPRACTOR
Joseph Building 11 Scott St.
Riverside, N. J.

Palmer Method. Member U. C. A.
Competent Lady Attendant.
House Calls by Appointment.
Graduate M. C. C. (2 years)
Graduate E. C. C. (3 years)
OFFICE HOURS
Tuesday, Thursday and Saturday
7 a. m. to 9 p. m.
Saturday afternoon 3 p. m. to 4 p. m.
House Calls by Appointment

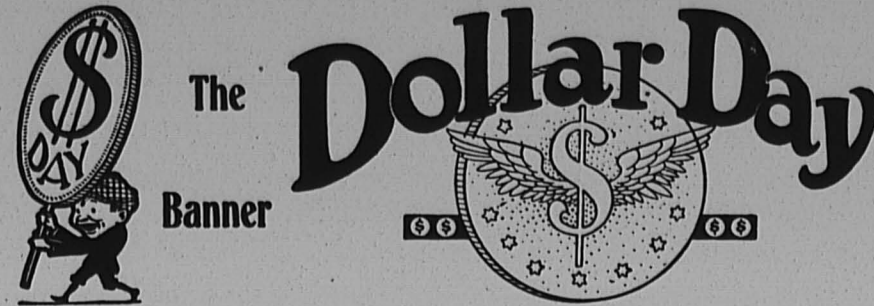
GENUINE

WEAREVER ROASTING PAN

Special 98¢

Schwering's

305 East Broad Street, Palmyra
Phone, Riverton 284-w



Sales of the Season



FREEMAN'S ECONOMY STORE

FOR THREE DAYS ONLY
Friday, Saturday, Monday, April 4, 5, 7, 1924

EASTER MERCHANDISE THAT YOU CANNOT RESIST BUYING



Ladies' \$2.00 and \$2.50 Gingham Dresses Sale Price \$1

MEN'S \$1.50, \$2.00 and \$2.50 Dress Shirts, Sale Price, \$1

SPECIAL MEN'S 85c UNION SUITS IN THE B.V.D. STYLES. Sizes from 34 to 44 Sale Price 2 for \$1

Men's 25c & 35c Socks in black or brown Sale Price 5 for \$1

SPECIAL 65c to \$1.00 Boy's Blouses. Sizes 8 to 16 Sale Price 2 for \$1

CHILDREN'S 35c and 50c THREE-QUARTERS SOCKS, in all colors Sale Price 5 pairs for \$1

ENVELOPE CHEMISE and NIGHT GOWNS; regular \$1 and \$1.25 kind Sale Price 2 for \$1

\$1.00 and \$1.50 Embroidered Scarfs Sale Price 2 for \$1



500 pairs Women's and Children's Shoes

Mostly all samples and broken sizes
Sale Price \$1

Ladies' Shirt Waists \$1.00 and \$1.50 kind Sale Price 2 for \$1

LADIES' 25c and 35c RIBBED VESTS Sale Price 6 for \$1

Just in time when you need this merchandise we are here to assist you in your savings. Don't forget that all our merchandise is greatly reduced for our Spring Sale. Don't hesitate but come and see what you can save. The store that always gives you exactly what is advertised.

FREEMAN'S ECONOMY STORE

213 WEST BROAD STREET (below Fire House) PALMYRA

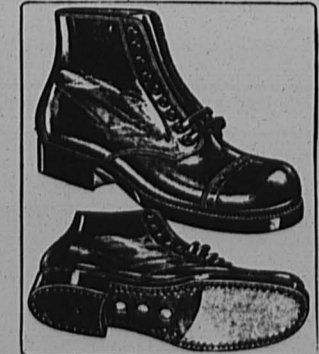
I'm Fixed for Next Winter!

Make sure of next winter's supply by ordering now, while we have a full supply of the best quality Coal in all sizes.

You have everything to gain and nothing to lose by playing safe.

Joseph T. Evans

Telephone 302 Riverton



Walk in Comfort

Wear the EDUCATOR Shoe

Shoes for the Whole Family
Romm's Department Store
13-15 West Broad Street PALMYRA

JOSEPH PIERGROSS

ALL KINDS OF CEMENT WORK
Porches, Sidewalks, Curbs, Brickwork, Foundations
Estimates Free
Second and Market Streets Palmyra
Phone: Riverton 427

Riverton Market House

JOHN G. BUEHRER, Proprietor
Phone 627—"Just across from the Station"—308 Broad St.

MEAT SPECIALS

LEGS SPRING LAMB,	38c lb
SHOULDERS SPRING LAMB	28c lb
BREAST OF SPRING LAMB,	10c lb
ALL SMOKED HAMS	22c lb
PURE LARD,	2 lbs. 25c

FRESH KILLED CHICKENS

Grocery Specials for this Weekend

Granulated Sugar,	9c lb
Ceresota or Gold Medal Flour,	12 lbs. 50c
Kellogg's Sweet Cider, bottle,	30c
Kellogg's Grape Juice, bottle,	30c
Marion Peaches, large	20c
Sliced Pineapple,	35c
Duchess Tuna Fish,	23c
Home-run Sardines,	7c
Imported Crab Meat,	50c can
Hershey's Farm Peas,	16c can
Golden Bantam Corn,	23c can

STRICTLY FRESH EGGS

PAINTS and VARNISHES

BRUSHES, TURPENTINE
OILS, PUTTY,
GLASS, ETC.

SILAS J. CODDINGTON ESTATE

PAINTING AND PAPERHANGING
519 Howard Street RIVERTON

Wm. J. Wolfschmidt

Now is the time to place your order for
PAPERHANGING
Do not leave it until the Spring rush. Estimates furnished
608 Thomas Avenue, Riverton
Drop a postal

ELWOOD W. BELTON

Undertaker
Moorestown, N. J.
Bell Phone 343 Private Ambulance

Riches Bring Responsibilities

*Enjoy Your Wealth
Give Us the Care*

Under a Living Trust you can give to this bank the care of all or any part of your real estate, securities, or cash without surrendering control thereof; and provide also for its ultimate distribution after your death.

Reverse of fortune cannot touch such an independent estate.

A Living Trust insures an unfailing separate income either for yourself or any designated beneficiary.

Cinnaminson National Bank

RIVERTON NEW JERSEY

Blooming Potted Plants



When planning your Summer gardens, you will find scores of suggestions in the sturdy Plants we have ready for your choice. Many are in full bloom now and will continue throughout the Summer.

EASTER PLANTS

Herbert W. Richman 623 LINDEN AVENUE RIVERTON, N. J.

"INCOME FOR LIFE"

IS SAVING—NOT SPENDING

In youth, Old Age seems far away. To Old Age, Youth is but yesterday. Make your declining years comfortable and secure complete life insurance protection as well, by diverting a small part of your present earnings to our "Income for Life" plan. Send for booklet.

Originated by

Fidelity Mutual Life

Insurance Company of Philadelphia
Walter Le Mar Talbot, President

ALFRED C. WALKER
Agent South Jersey

420-21 Guarantee Trust Bldg., Atlantic City, N. J.

Faithfully Serving Insurers Since 1878

BUY YOUR

Ford Car or Truck

OF

Joseph W. Friday

Authorized Sub-Dealer of
Palmyra Motor Company

502 Main Street, Riverton Bell Phone 52-w

Insurance Will Safeguard Your Home

your Furniture, and your Household Goods

ADA E. PRICE

REAL ESTATE

Notary Public Conveyancing
All Kinds of Insurance
416 Lippincott Avenue, Riverton Phone 242-M

Get them at Dreer's

SEEDS PLANTS BULBS

Largest collection of Hardy Perennials, Roses, Dahlias, etc., Palms, Ferns, and Decorative Plants of all kinds constantly at hand at our Riverton Nurseries. Orders taken for Bulbs, Flower and Vegetable Seeds, Fertilizers, Insecticides, Garden Tools, etc., which are supplied from our Philadelphia establishment; also, our Celebrated Lawn Grass Seeds, which may be relied upon for quick and permanent results.

CATALOGUES FREE.

HENRY A. DREER, Riverton, N. J.

SEED STORE, 714-716 Chestnut St., Philadelphia

John A. Roebling's Sons Company

POULTRY NETTING

WIRE ROPE WIRE STRAND

FENCE WIRE TELEPHONE WIRE

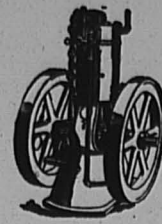
VEGETABLE STAKES

FLOWER STAKES

WIRE CLOTH FOR WINDOW SCREENS

ELECTRICAL WIRES FOR
HOUSE WIRING

Trenton and Roebling, N. J.



For Sale Cheap

8 h.p. Type B

Fairbank's Engine

Gas or Gasoline

Apply

The New Era Office

Riverton, N. J.

Telephone 63-w

LESLIE W. REEVES WATCHMAKER



612 Lippincott Avenue, Riverton
References as to ability furnished upon request



Take Any
User's Advice

and buy a

Remington Portable

The leading portable typewriter—in sales and popularity. Standard Keyboard. Case only four inches high.

Sold by
WALTER L. BOWEN
Riverton, N. J.

EXECUTORS' NOTICE

Estate of Charles Walter Joyce
Notice is hereby given that an order has been made by the Surrogate of the County of Burlington, bearing date on the 25th day of March, 1924, upon the application of the subscribers, executors, requiring the creditors of Charles Walter Joyce, deceased, late of the County of Burlington, to bring in their claims against the estate of said decedent under oath or affirmation on or before September 25, 1924, or they will be deemed of any action therefor against the said executors.
MARY A. JOYCE,
LEON JOYCE,
WALTER M. JOYCE,
Executors.

JOSEPH L. THOMAS, Proctor.
Dated March 25, 1924. 3-27 to 5-29

World's Champion Egg-Layer Was an Incubator Chick

By EARL M. WHITNEY

Setting hens are sometimes very fickle. They have been known to give every evidence of a desire to hatch a brood of chicks and then to change their minds after the eggs have been furnished them for this purpose. This is not the general rule, of course, but the fact remains that the hen cannot always be depended upon. There is also this further objection to natural incubation: you cannot select the time for hatching, but must defer entirely to the hen's wishes whether she determines to set in July, August or January. Usually the hen is not an advocate of early hatching. She prefers to wait until warmer weather when nature can give her every comfort.

Most hens of the heavier breeds make good mothers. The theory, however, that the hen-hatched chick is any healthier, stronger or better than the incubator chick, seems to be disproved. The world's long distance champion layer was an incubator chick. Modern methods of incubating and brooding have eliminated the weaknesses prevalent in the early days when artificial incubation was in its experimental stages.

How to Set Hen.

The first requisite in setting a hen is a good remedy for lice. This may be secured from your poultry supply dealer. It should be applied carefully and well to both the hen and the nest.

The nest should be composed of straw over a few inches of earth and should not be too deep. The nesting box should be about 15 inches square and 15 inches high with a 6-inch board in front to prevent nesting material and eggs from falling out. The straw should be shaped to the hen's body, allowing a slightly greater depth in the center of the nest so as to prevent eggs from rolling out from under the hen and getting cool.

Detailed plans for the care of baby chicks and the mother hen may be secured from the Pratt Poultry Institute, Philadelphia, Pa. This institution has carefully chronicled the results of years of practical research work on this subject and will gladly supply the information to any who are interested, without charge. Artificial incubation has also been the subject of exhaustive study, and this advice is also available to all who seek it.

Locate Incubator in Well Ventilated Cellar or Basement.

A well ventilated cellar or basement is considered by all experts to be the best place in which to operate an in-

Incubator. Good ventilation is a vital factor to a successful hatch and poorly ventilated cellars should be abandoned as unsatisfactory as they are either too damp or too dry, a condition possibly due to their being built too deep into the ground.

Incubator rooms should not be heated except where the temperature of the incubator cannot be kept up without it. This would occur only in extremely cold weather if the location is at all satisfactory. The ideal room temperature for the average incubator is around 50 degrees. The objection to heating the incubator room is the fact that heat dries out the air and it is not as pure as it should be when it enters the egg chamber.

Pointers on Care in Operation of Incubators.

If you have a lamp heated incubator, use a sew wick with each hatch. If the oil reservoir is of the ordinary type, it should be filled daily, preferably in the afternoon to give assurance that there is sufficient oil to last until morning. Never fill the lamp bowl entirely full, as expansion of the oil when warmed will cause it to overflow.

All lamp fixtures should be wiped clean and dry every day. If the lamp burner is cleaned daily, there will rarely if ever be any trouble with smoky or ill-smelling lamps. In lighting the lamp, start with a small flame and adjust according to temperature. It is advisable to withhold the eggs until the machine has run twenty-four hours without any adjustments.

When eggs are first put into the incubator, the temperature will drop and not return to the required heat until the eggs are warmed up. This takes several hours. It is a mistake to adjust the heat regulator during this period. Don't touch it during the first twenty-four hours of the hatch, and the chances are that you will find the temperature up to requirements not later than the second day or as soon as the eggs have become thoroughly warmed.

How to Turn and Cool Eggs During Incubation.

Do not open the incubator to cool or turn eggs until the third or fourth day. From then on until the eighteenth day, eggs should be turned both morning and evening.

The amount of cooling each day depends on the temperature of the incubator room, the period of the hatch and the condition of the eggs. This is a matter of the operator's good judgment.

(Copyright 1924, Pratt Experimental Poultry Farm.)

THE EXCEPTION



"When wrong, you should admit it," declared the earnest young man, "but when right, you should be able to maintain your position against everyone."

"Except your wife," quietly put in his father, who had just retired from an argument with the head of the house.

Wood From Insect-Killed Trees.

Recent investigations made by the United States forest product laboratory indicate that timber cut from insect or fire-killed trees is just as good for any structural purpose as that cut from live trees of similar quality, providing the wood has not been subsequently injured by decay or further insect attack.

SHE WAS ONE



He—'I'll be glad to see the old-fashioned girl come back again.
She—You mean Eve?

Tried it on the Wife.

The other day Jones heard a good conundrum and decided to try it on his wife.

"Do you know why I am like a mile?" he asked her when he arrived home.

His wife did not stop to think. "No," she replied, promptly. "I know you are, but I don't know why you are."

PUBLIC SERVICE IN 1923!

Progress and Development as Shown by Facts and Figures Compiled From the Annual Report of Public Service Corporation of New Jersey

Capital invested in plant and equipment increased by \$22,645,057.

Operating revenues of subsidiary companies was \$750,919 more than in 1922.

There were added 82,297 electric and 25,298 gas customers.

The total of gas and electric customers passed the million mark—1,035,746.

Electric energy produced amounted to 1,053,906,064 kilowatt hours, in addition to which 30,800,884 kilowatt hours were purchased.

The increase in electric energy produced amounted to 114,493,024 kilowatt hours.

Gas sold reached a total of 19,558,279,000 cubic feet—an increase over the previous year of 1,821,590,000.

The average number of revenue passengers carried on each day the railway was in operation increased from 891,138 in 1922 to 956,433 in 1923.

Seventy-two miles of electric transmission line were added to the 957 previously in service.

The miles of wire in the electric distribution service was increased by 2,349, making a total of 24,866.

There were added to the gas distribution system 135 miles of main, making the total 3,467.

The capacity of electric generators was increased by 70,600 KVA, to a total of 351,500 KVA.

Total sales of electric and gas appliances through commercial offices amounted to \$4,370,112—an increase of \$1,301,443.

Construction work on the new \$23,000,000 power plant at Kearny was begun.

The number of stockholders of Public Service Corporation of New Jersey was increased by 12,847.

PUBLIC SERVICE CORPORATION OF NEW JERSEY

Make Sure of Early Delivery

Spring with its rush of Fordson orders will soon be here. To be sure of getting delivery in time, order now.

The demand for Fordsons is increasing every day, and you may be disappointed if you wait too long.

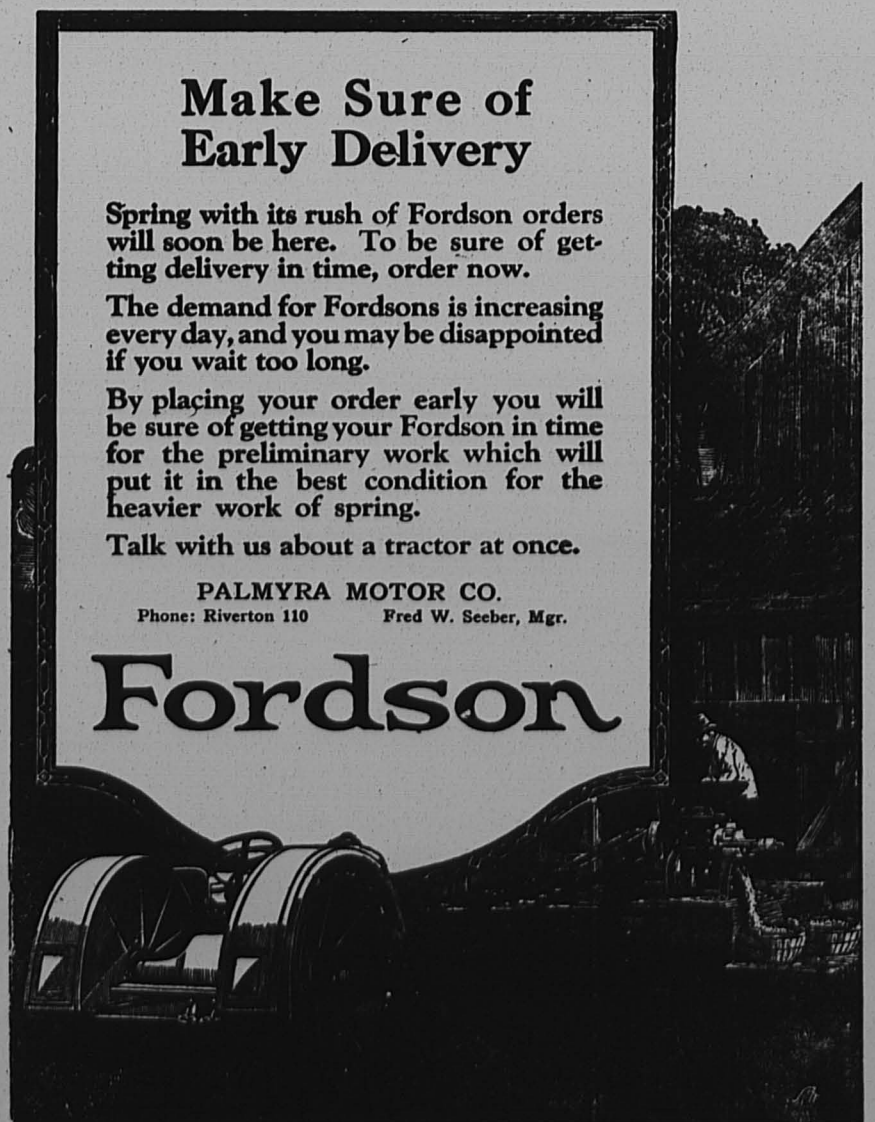
By placing your order early you will be sure of getting your Fordson in time for the preliminary work which will put it in the best condition for the heavier work of spring.

Talk with us about a tractor at once.

PALMYRA MOTOR CO.

Phone: Riverton 110 Fred W. Seeber, Mgr.

Fordson



Charity Collectors Quizzed

Two men who were suspected of soliciting funds without proper authority were taken before Justice of the Peace Coddington, who held court in the Council Chamber, by Officer Walter G. Miller last Saturday afternoon. The complainant was made by two Salvation Army men, William Vickers and Charles Elliott, who, when they attempted to solicit funds for the Army, found two men had been ahead of them.

Riverton Lads Capture Stray Dogs

The Calvary group "doggie" roast held last Thursday evening in the Calvary Presbyterian Church was a decided success. Mr. Rowley and several of the older boys showed their skill with the frying pan. All of the boys were fully satisfied, although they had enormous capacities as the remaining supply of "doggies" showed.

Palmyra Ambulance Association

"A New and Better Ambulance by Memorial Day 1924." Our time limit for our "New and Better Ambulance by Memorial Day 1924" is getting shorter each week, and the contributions are coming in rather slowly at this time, however, maybe everyone is waiting until our "ambulance day" which will take place sometime this month.

The COTTAGE GARDENER To Supply Table With Vegetables Coldframe is Advocated as Means of Providing the Crispy Greens.

Kitchen gardens were a necessary adjunct to the home in the earlier days, but at present a kitchen coldframe is advocated as a means of supplying the family table with fresh lettuce, parsley, radishes, cress, and other vegetables at periods of the year when it is too cold to grow these things in the open ground.

The construction of a coldframe is comparatively simple, as the side walls may be made of boards, brick, hollow tile or concrete. Where the construction is of boards, cypress lumber should be used, and it is a good plan to have the walls made double and some dry straw or planing mill shavings packed in the space between them.

One of the best types of construction is simply to put in a little foundation, then set up frames and tamp in well-mixed concrete consisting of about three parts clean, broken stone or gravel, two parts sharp sand and one part cement.

The size of coldframe to build will depend upon circumstances. Standard coldframes or hotbed sash are 8 by 6 feet in size and the frame may be constructed to accommodate one, two, or even as high as five or six of these sashes.

Overcrowding, perhaps, is the greatest fault of the average gardener. Because the plants are small when they first appear above ground, he will not space them properly, because they look lonesome with an expanse of bare soil between them.

This fault should be corrected when the transplanting is done, or if the seeds are sown in the open ground, by judicious thinning. Follow directions, which are always contained on seed packets as to proper distances, to the letter. Work with a tape measure or yardstick.

That extend down into the concrete. Rafter upon which the sash rest are tied to these plates. At the upper side of the bed a sort of overhanging board should be put on in such manner that the end of the sash will slide up beneath it, making the bed tight.

ANNUAL WATER RATES of the RIVERTON AND PALMYRA WATER COMPANY. All persons wishing to connect with the public water supply, may do so by applying for a contract and filing it with the Company, at the office, Broad and Main Streets, Riverton.

Office Hours Closed Saturday 12.30 8.30 to 4.30 daily. The cheerful man carries the key to many a happy adjustment of life's troubles.—Uncle Philander.

A New Line Added This Week Fancy Apples, Oranges and Grapefruit Beitz Delicatessen Formerly Field's 115 East Broad Street, Palmyra Phone, Riverton 356-R for Prompt and Free Delivery

Repair Work properly executed will save many pieces of furniture that would otherwise be discarded, and you will find it much cheaper than buying new. Ye Upholstery Shoppe "The Sign of Quality" WILL K. BOWEN Roberts Bldg., 2nd fl., Main St. Phone, Riverton 201-w

For Your Easter Tour or the drive to and from Easter Sunday services—is your car in ship-shape? Let us look it over and make the necessary adjustments and repairs. Around Easter, too, you are thinking of the delightful spring and summer tours in prospect. Get ready now.

TAYLOR'S GARAGE Gray and Gardener Cars Broad and Fulton, Riverton Telephone 506-w

Quoth the Easter Rabbit: I love to dress up at Easter time, but how can I do it if my boots are not just so? New shoes are mighty costly by just now, but I'll tell you the secret of being well dressed about your feet and saving dollars. Let the Riverton Electric Shoe Repairing shop repair those comfortable old shoes of yours. They'll feel just as good and wear great!

Riverton Electric Shoe Repairing Broad and Main Satisfaction Guaranteed Have your hat made to fit your head and match your new spring suit or gown \$8.50 up SPECIAL LINE OF HATS \$5 and \$6 VERA L. GUEST Exclusive Millinery Broad and Garfield Avenue, Palmyra Open Monday, Friday and Saturday evenings Telephone Riverton 517

Give Him a Necktie for Easter We have a new supply of most attractive Spring four-in-hand ties for men and boys. These ties are made by the best necktie house in Philadelphia. Or a Belt or Handkerchiefs will make an acceptable gift. BELTS In Belts the name "Pioneer" stands for the highest quality. HANDKERCHIEFS The quality and style of our Handkerchiefs need no recommendation. They have stood the test of years. They come direct from New York. Many of them are imported. MRS. ALFRED SMITH 414 Main St., Riverton Phone, Riverton 199-R "Where Your Money Buys the Best"

Prime Rib Roast 28c to 35c lb These roasts come in weights from 3 1/2 lbs. up. No matter how small your family may be, we have a roast to suit you. WILLIAM N. MATTIS BUTCHER COLLINS BUILDING, RIVERTON Telephone 86

ESTABLISHED 1865 BIOREN & CO. BANKERS 410 CHESTNUT STREET, PHILADELPHIA INVESTMENT SECURITIES MEMBERS PHILADELPHIA AND NEW YORK STOCK EXCHANGES

Thrifty Housewives Know! Spoiled food is money thrown away. Providing ICE the year around prevents food spoilage, saves waste and adds immeasurably to the taste of everything that graces the table. Buying ICE is not an expense, it's an investment in "health insurance" that pays big and certain dividends. O. H. MATTIS ESTATE ICE Riverton, New Jersey Telephone 575

It Pays to Advertise Continually! There are twenty-six other Colorado mountains loftier than PIKE'S PEAK. But who knows about THEM? Tell your story to the readers of The New Era every week, and get in the Pike's Peak Class. Cuts and copy suggestions are a part of the service. THE NEW ERA Riverton, N. J.

FRANCIS L. McDORMAN Publicity Director

P. H. S. Notes

The curtain will raise for the Palmyra high school baseball season next Tuesday afternoon. The boys are scheduled to meet the Temple Prep team at the Field Club park.

Do Not Overcrowd Your Young Plants

Transplant From Flats to Larger Boxes or Roomy Flower Pots. Overcrowding, perhaps, is the greatest fault of the average gardener. Because the plants are small when they first appear above ground, he will not space them properly.

P. S. Bills Lower

Beginning with May sales, for which bills will be rendered in June, the price for gas and electricity will be reduced in the territory served by the Public Service gas and electric companies.

New Telephone Rates Not Granted

The Board of Public Utility Commissioners of New Jersey has suspended the rates for local telephone service which were filed with the Board by the Delaware & Atlantic Telegraph & Telephone Company to become effective April 1st.

Two Fires in Two Days at the Same Place

Last Monday afternoon the Riverton Fire Company was called out to extinguish a blaze on the first floor of a barn on Penn street between Second and Third, in the rear of the old Riverton property.

Fire at New Albany

Tuesday night the chimney of Paul Leusser, on the New Albany road, caught fire, but no damage was done. Riverton, Palmyra, Parry, Bridgeboro, and Riverside responded to the alarm.

Rain's Horns Curved

The "Big Horn" is a stocky, sturdy animal, surprisingly agile in spite of its weight, says Nature Magazine. An average size ram will turn the scales at 250 pounds, while an occasional specimen will weigh 350. Both male and female have horns, those of the ram being gracefully curved.

The COTTAGE GARDENER

Do Not Overcrowd Your Young Plants Transplant From Flats to Larger Boxes or Roomy Flower Pots.

When Seedlings are 2 1/2 inches high transplant them into larger flats as they get crowded. Transplant again into pots.

SEEDLING TRANSPLANT POT. A Well-Constructed Coldframe.

When Seedlings are 2 1/2 inches high transplant them into larger flats as they get crowded. Transplant again into pots.

SEEDLING TRANSPLANT POT. A Well-Constructed Coldframe.

SPRAYING TREES. Garden Tools. Plant Sweet Peas Early. Subscribe for The New Era.



AWNINGS

add much to the comfort of your home. Keep cool while you have a chance!

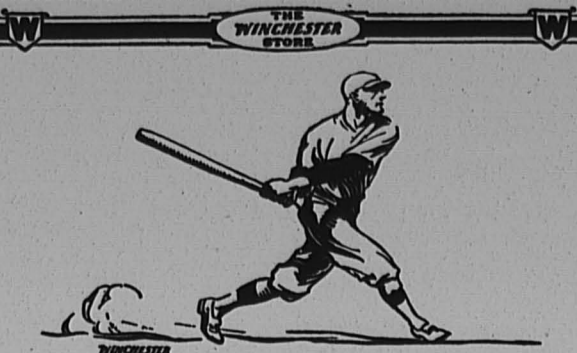
OUR AWNINGS are full-fashioned, fit well, look well and wear well. Let us tell you how little it will cost to keep your house cool all summer.

WILLIAM J. PARKER

325 Leoney Avenue

Palmyra, N. J.

Telephone, Riverton 130-M



Oh Boy!---What a Hit

Have you seen the 1924 line of Winchester baseball goods? It's the opening hit of the season.

We are proud to have such a fine lot of real baseball goods — everything the player needs — uniforms, shoes, hats, gloves, masks and balls.

Now on display in our store.

WINCHESTER Special Baseball

Regulation size, rubber center, compressed core, genuine horsehide cover

25c

Here's the ball for early season practice

JOHN H. ETRIS

17 West Broad Street Palmyra
Phone: Riverton 81-J

THE WINCHESTER STORE

Riverton Market House

JOHN G. BUEHRER, Proprietor
Phone 627—"Just across from the Station"—308 Broad St.

MEAT SPECIALS

LOIN PORK ROAST,	25c lb
NECK END PORK LOIN,	22c lb
SMALL FRESH HAMS, for roasting,	20c lb
FRESH PORK SHOULDERS,	18c lb
ALL SMOKED HAMS, sugar cured,	22c lb

FRESH KILLED CHICKENS

Grocery Specials for this Weekend

Granulated Sugar,	9c lb
Golden Rod Coffee,	40c lb
Sliced Pineapple,	can, 32c
Fruit Salad,	can, 28c
Marion Peaches, large can,	20c
Marion Tomatoes, large can	15c
Hershey Farm Peas,	15c
Saltsea Clam Chowder,	20c
Hypatia Salmon, can	14c
Strictly Fresh Eggs	38c
Large Juicy Lemons, per dozen,	15c

WE CARRY A FULL LINE OF FRESH VEGETABLES

Easter Is Flower Time



In all the world nothing tells the story of Easter like Flowers.

Here you will find an assortment of Blossoms and Flowering Plants from which you may choose just what you want for your own home or to send as an Easter remembrance to a friend.

HYACINTHS DAFFODILS
TULIPS

FRESH CUT FLOWERS

Prices Reasonable

EDWIN PARKER

PALMYRA-RIVERTON FLORIST

Phone, Riverton 220-w

602 Parry Avenue, Palmyra, N. J.

Open daily and evenings

Insurance Will Safeguard Your Home

your Furniture, and your Household Goods

ADA E. PRICE

REAL ESTATE

Notary Public All Kinds of Insurance Conveyancing
416 Lippincott Avenue, Riverton Phone 242-M

Leave Your Car Here



THERE IS NO TIME LIKE THE PRESENT to have your car inspected and necessary repairs made. Then when you want to take a trip you know everything is in "apple pie" order, and you can thoroughly enjoy every minute of the time.

CONCENTRATED
BOYCE-ITE
the new fuel
ingredient
Removes the knock
Prevents carbon
Increases power

Full Line of Tires and Accessories

Clinton B. Woolston

STAR AND DURANT
SALES AND SERVICE

BROAD AND MAIN STREETS, RIVERTON
Telephone 460 for Demonstration

Wm. J. Wolfschmidt
Now is the time to place your order for
PAPERHANGING
Do not leave it until the Spring rush. Estimates furnished
608 Thomas Avenue, Riverton
Drop a postal

LESLIE W. REEVES
WATCHMAKER

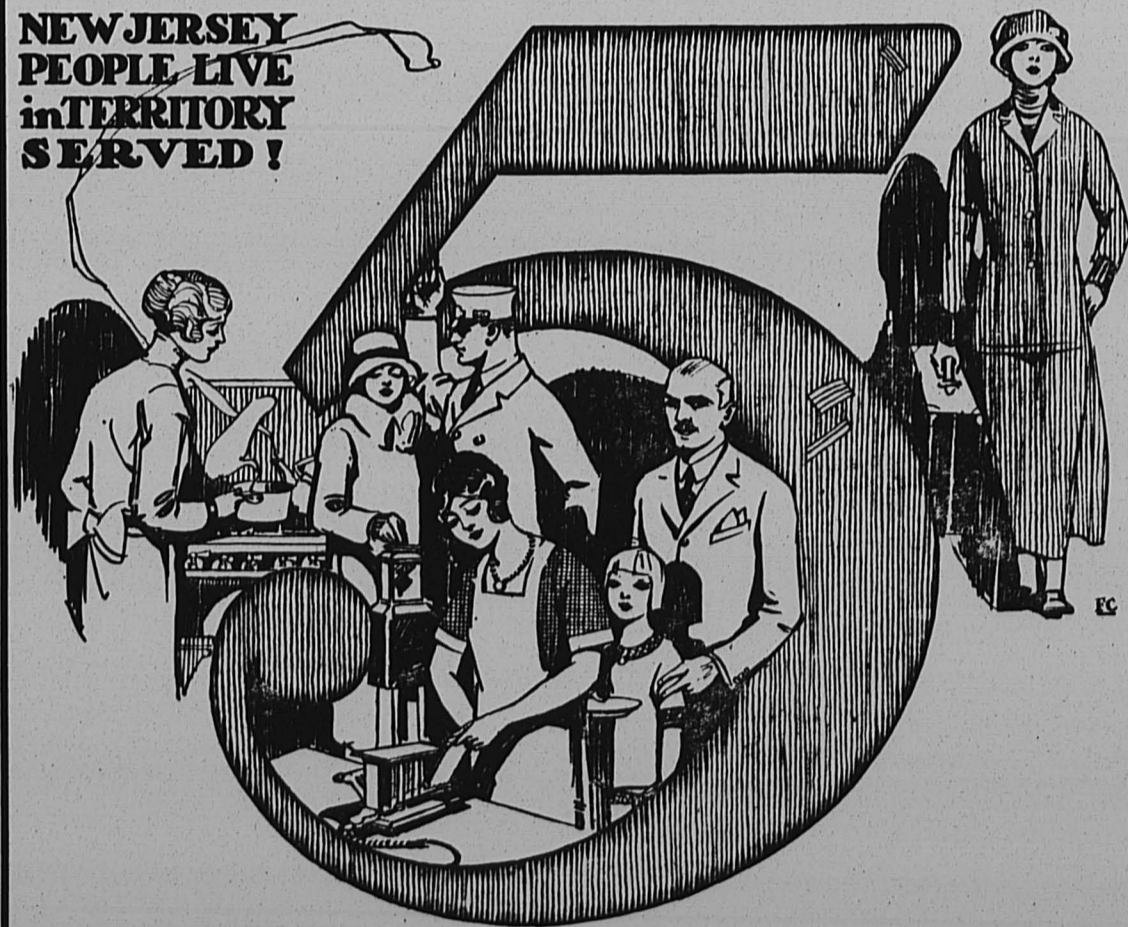


612 Lippincott Avenue, Riverton
References as to ability furnished upon request

EXECUTORS' NOTICE
Estate of Charles Walter Joyce
Notice is hereby given that an order has been made by the Surrogate of the County of Burlington, bearing date on the 25th day of March, 1924, upon the application of the subscribers, executors, requiring the creditors of Charles Walter Joyce, deceased, late of the County of Burlington, to bring in their claims against the estate of said decedent under oath or affirmation on or before September 25, 1924, or they will be debarred of any action therefor against the said executors.
MARY A. JOYCE,
J. LEON JOYCE,
WALTER M. JOYCE,
Executors.
JOSEPH L. THOMAS, Proctor.
Dated March 25, 1924. 3-27 to 5-29

Field of Public Service FIVE out of EVERY SIX

NEW JERSEY
PEOPLE LIVE
in TERRITORY
SERVED!



More than 2,600,000 people—577,000 families—reside in that wide stretch of New Jersey reaching from the Hudson to the Delaware in which Public Service utility companies operate.

No similar community in the United States is growing at so fast a rate. No section is more prosperous, or progressive. Let your savings aid this development and earn for you an attractive return by investing in them.

7% CUMULATIVE PREFERRED STOCK PUBLIC SERVICE CORPORATION OF NEW JERSEY

It can be bought under our Customer Ownership Plan!

Ask Any Public Service Employee

Public Service Companies File New Gas and Electric Rates That Will Save Consumers \$2,500,000 Annually

Schedule Submitted to Board of Public Utility Commissioners Provides That Reduced Prices Shall Become Effective with May Sales, Payments for Which Will Be Due in June.

Gas Price Lowered Five Cents per Thousand Cubic Feet—New Base Rate \$1.20, instead of \$1.25 per Thousand.

Electric Rate Cut to Eight Cents per KWH after first 20 KWH each month, instead of after first 500 KWH.

New Gas Rates

A flat reduction of five cents per thousand cubic feet is made in the price of gas, applicable on each step of the gas company's rate.

At present the base rate is \$1.25 per thousand cubic feet. The new base rate will be \$1.20 per thousand cubic feet.

Present uniform gas rates range from \$1.25 per thousand cubic feet down to 90 cents per thousand cubic feet.

The new uniform gas rates will range from \$1.20 per thousand cubic feet down to 85 cents per thousand cubic feet.

An Optional Industrial Demand Rate, under term contracts, has also been filed.

This rate, as its designation implies, is intended to apply to the use of gas, especially in very large quantities, for industrial purposes and is based upon the factors of both demand and consumption.

Complete information of the advantages of the rate in individual installations will be cheerfully furnished by the company to industrial customers.

New Electric Rates

After first 20 kilowatt hours of consumption in each month, the price drops from 9 cents to 8 cents per kilowatt hour for the next 480 kilowatt hours.

Second block of 500 kilowatt hours per month is reduced from 8 cents to 7 cents; the third block of 500 kilowatt hours is reduced from 7 cents to 6 cents, and the next block, covering 1,000 kilowatt hours, will be at a 5-cent instead of a 6-cent rate.

Customers whose monthly consumption never exceeds 20 kilowatt hours are comparatively few in number. The cost of their service, however, is greater than their contributions. The new rate schedule prevents such a condition being accentuated and makes for a fairer distribution of the benefits of the reduction.

Under the new schedule the second block of the retail power rate also is reduced from 6 cents to 5 cents per kilowatt hour. This benefits substantially all retail power users.

Wholesale power customers who are served with 13,000 or 26,000 volt service will receive an additional discount of 5 per cent.

**Saves \$1,000,000 a Year
For Gas Customers**

**Saves \$1,500,000 a Year
For Electric Customers**

These rate reductions and consequent savings to customers are made possible only by greatly increased business and the strictest economy in operation.

It will continue to be the aim of both companies, as it has ever been their policy in the past, to give their patrons the best service at the lowest rates consistent with sound economic principles and good management.

Public Service Gas Company

Public Service Electric Company

THOMAS N. McCARTER, President

Little Girl by Grace E. Hall. Eighteen! You are a woman now, Life's outward paths are calling you; June weaves a rose wreath for your brow, All set with diamond-drops of dew, The birds are trilling of the Spring, You pause a minute in delight, Before you spread the fledgling wing, And from the home nest take your flight.

IMPROVED UNIFORM INTERNATIONAL Sunday School Lesson Lesson for April 20 ELISHA: TEACHER AND STATESMAN

created that she sold enough to pay the debt. 3. The Shunamite's Son Restored (Chap. 4:8-37). Because of hospitality shown Elisha, he sought to help his hostess by promising that the Lord would give her a child.

Lesson for April 20 ELISHA: TEACHER AND STATESMAN LESSON TEXT—II Kings 4:15-23. GOLDEN TEXT—"Be not overcome of evil, but overcome it with good."

4. Heals Deadly Pottage (Chap. 4: 38-41). In time of famine they made a vegetable soup from whatever growing plants they could find. By mistake a poisonous plant had been gathered.

1. Elisha, Elijah's Successor (I Kings 19:15-21; II Kings 2:2-15). 1. His Anointing (I Kings 19:15-21). In obedience to the Lord's command, Elisha went forth from his hiding place in Horeb to anoint Elisha as prophet.

5. Fed One Hundred Men (Chap 4: 42-44). To the astonishment of his attendant, he fed one hundred men with twenty barley cakes and a sack of uncooked grain.

2. Elisha's Double Portion (II Kings 2:12-15). 1. Elisha's cry (v. 12). "The chariot of Israel, and the horses thereof." This implies that Elisha was the true national defense.

6. He Healed Naaman, the Leper (Chap. 5:1-19). At the instance of a captive Jewish maid, Naaman, the great Syrian general, was brought into touch with Elisha. Without even coming to see Naaman Elisha, through his servant, bade him dip seven times in the Jordan.

John A. Roebling's Sons Company POULTRY NETTING WIRE ROPE WIRE STRAND FENCE WIRE TELEPHONE WIRE VEGETABLE STAKES FLOWER STAKES WIRE CLOTH FOR WINDOW SCREENS ELECTRICAL WIRES FOR HOUSE WIRING Trenton and Roebling, N. J.

Through Transportation to and from Riverside, Riverton, Palmyra to any point in Philadelphia via Tacony-Palmyra Ferry and Frankford L. PHILBURCO COACH LINE

Table with multiple columns showing times and routes for Riverside, Riverton, Palmyra, Philadelphia, and Camden.

P. R. R. TIME TABLE In effect October 17, 1923. Table showing times for Philadelphia, Riverton, Palmyra, and Camden.

TROLLEY TIME TABLE Table showing times for Riverside, Palmyra, Riverton, and Camden.

Table showing arrival and departure times for Philadelphia, Riverton, Palmyra, and Camden.

SPECIAL TROLLEYS—Weekdays Camden to Riverton—6.45, 7.15, 7.45 a. m. 5.15, 5.45, 6.15 p. m.

Public Service See These Ranges! Electric Disc Stove well-known Universal make, performs all the duties of a top burner right at your table. Exceptional value \$6.75.

Need Coal?

Phone 231



Use Your Head to Think Ahead

At prices named below you can save a right sizeable sum on your next winter's coal bill. You'll save an even larger sum if you'll "get next" to the trick of using a layer of Buckwheat Coal to top off each layer of big coal. And still a greater saving if you will use Buckwheat to bank your fire at night.

New Prices for Immediate Delivery

Egg, \$13.50 Stove, \$14.00 Nut, \$14.00
Pea, \$11.00 Buckwheat, \$7.50

H. B. WILLIAMS

Below Arch Street Station PALMYRA, NEW JERSEY
Orders taken at residence, 616 Garfield Avenue
Phone, Riverton 313-R

Judge Wells and an Unusual Program
At a meeting of the Calvary YMCA group's entertainment committee, the following program for their commencement exercises, was decided upon:
Selection by Burlington County YMCA orchestra
Address by County Secretary Guy C. Hendry
Address by Assistant County Secretary J. Porter Ashbrook
Selections on the steel guitar, Eliot Rowley
Short talks by six members of the graduating class
Address by Judge Wells
Presentation of emblems by C. W. Kipp, president of Riverton Board of Education
Orchestra, recessional
The program committee predicts that the talk of the group's humorist, Leon Sloan, will be particularly enjoyed, and their attention is called to the important fact that Edward Sordun, editor of Calvary group's year book, has consented to tell in his inimitable way of the inner-workings of his editorial department.
Allen Hemphill, the group's treasurer, has prepared a few appropriate words to be delivered in response to Mr. Ashbrook's remarks, while Gordon Foster, a local orator of note, as well as fencing champion of the group, is planning to respond to Mr. Hendry's address with a flashing verbal sabre.
Judge Wells' talk, specially prepared for the occasion, will be of special interest to parents of boys, and all those interested in YMCA work. All Association officials of Burlington county and residents of Palmyra and Riverton have been invited to these services, which will be held in the auditorium of the Riverton school, 8 p. m., April 24th.

Only One More Meeting This Year
The Calvary YMCA Group's year is speedily drawing to a close. Realizing that only one regular meeting remains of the present term, the boys chose to spend the bulk of their regular session last Thursday in discussion. "What is Loyalty?" was the main topic for consideration. Loyalty, especially to Calvary Group, as defined by the boys, meant devoted allegiance. Examples of men who were not loyal to their country were pointed out. The life of Benedict Arnold, who sacrificed his honor for money, was studied, and it was shown that Arnold died in disgrace and dire need as a result of his perfidy.
Another example of infidelity brought to the boys' attention was that of Aaron Burr, and the lesson drawn from his life was the futility of trying to play any kind of a game with dishonest methods. The boys were particularly interested in viewing an old pistol, the property of Mr. Jones, of the old muzzle-loading type, that Burr probably used in his duel with Hamilton. An old powder flask of the Revolutionary period was also



Y. W. Girls in Pageant
The county Y.W.C.A. is giving a World Fellowship pageant on May 24. Each club has chosen some country to represent at this pageant by the songs and dances of the country selected. The Riverton Girl Reserves have chosen Roumania.
The meeting of the Girl Reserves was held last Friday evening, the 11th at the home of Helen Greene. The meeting opened with the devotional services conducted by Miss Dehl, the leader, who has just returned from a two weeks' vacation.
On April 25th, Mrs. Hubbert is going to entertain the Girl Reserves with the lantern slides about Roumania.
Next week the meeting will be held at the home of Miss Marcella Bowen, 408 Thomas avenue.
ESTHER YARDLEY,
Publicity Secretary.

Easter Greetings



Everything for Easter

Little Extras in Wearing Apparel	Attractive Gifts
Silk Stockings	Handkerchiefs
Dove Underwear	Writing Paper
Ribbons	Books for the Children
Gloves	Many attractive and Novel Easter Toys, Baskets, Etc.
Men's Silk Socks	
Neckties	
Belts, etc.	

EXTRA GOOD EASTER EGGS
with your name on them

Rust Craft Easter Cards are beautiful and clever

MRS. ALFRED SMITH

414 Main St., Riverton Phone, Riverton 199-R

Easter Is Flower Time



In all the world nothing tells the story of Easter like Flowers.

Here you will find an assortment of Blossoms and Flowering Plants from which you may choose just what you want for your own home or to send as an Easter remembrance to a friend.

HYACINTHS DAFFODILS
TULIPS

FRESH CUT FLOWERS

Prices Reasonable

EDWIN PARKER

PALMYRA-RIVERTON FLORIST

Phone, Riverton 220-w

602 Parry Avenue, Palmyra, N. J.

Open daily and evenings

S. G. SNELSON

RIVERTON - PALMYRA - DELAIR AND PHILADELPHIA EXPRESS

MOVING

AND LOCAL AND LONG DISTANCE HAULING

Palmyra Office, 506 Cinnaminon Avenue

Telephone, Riverton 104

Philadelphia Offices

307 Market Street

Bell Phone, Market 1005

54 North Front Street

Bell Phone, Market 1945

ESTABLISHED 1865

BIOREN & CO. BANKERS

410 CHESTNUT STREET, PHILADELPHIA

INVESTMENT SECURITIES

MEMBERS PHILADELPHIA AND NEW YORK STOCK EXCHANGES



AWNINGS

add much to the comfort of your home.

Our Awnings are full-fashioned, fit well, look well and wear well. Let us tell you how little it will cost to keep your house cool all summer.

William J. Parker

325 Leconey Ave., Palmyra
Telephone: Riverton 130-M

EXECUTORS' NOTICE

Estate of Charles Walter Joyce

Notice is hereby given that an order has been made by the Surrogate of the County of Burlington, bearing date on the 21st day of March, 1924, upon the application of the subscribers, executors, requiring the creditors of Charles Walter Joyce, deceased, late of the County of Burlington, to bring in their claims against the estate of said decedent under oath or affirmation on or before September 25, 1924, or they will be barred of any action therefor against the said executors.
MARY A. JOYCE,
J. LEON JOYCE,
WALTER M. JOYCE,
Executors.

JOSEPH L. THOMAS, Proctor. 3-27 to 5-29 Dated March 25, 1924.

Upholstery

that makes you comfortable!

When you want to relax, you like to feel that your chair or davenport is "just right." We know how to make it that way.

A new line of Sunfast Linens, Cretonnes and Velvets have just been received

Ye Upholstery Shoppe

"The Sign of Quality"
WILL K. BOWEN
Roberts Bldg., 2nd St., Main St.
Phone, Riverton 201-w

LESLIE W. REEVES WATCHMAKER



612 Lippincott Avenue, Riverton
References as to ability furnished upon request

ELWOOD W. BELTON Undertaker

Moorestown, N. J.
Bell Phone 343 Private Ambulance



The Language of Easter

JEWELRY SPEAKS, AS NOTHING ELSE CAN, the language of Eastertide. You may choose, for Her, a Gift that will be most pleasing, one that will last for years, yet the cost may be as little or as much as you wish to make it.

INDESTRUCTIBLE PEARLS, \$1.98 up
PALMYRA JEWELRY SHOP
J. ROTHBAUM

Telephone: Riverton 644-w 201 East Broad Street, Palmyra

Insurance Will Safeguard Your Home

your Furniture, and your Household Goods

ADA E. PRICE

REAL ESTATE Conveyancing
Notary Public All Kinds of Insurance
416 Lippincott Avenue, Riverton Phone 242-M

TIME FOR

Michell's Grass Seed, 8 quarts, \$1.45
Steel Rakes, Special .50
Steel Hoes, Special .50

A large quantity Poultry Wire at a low figure

SCHWERING'S

Phone Riverton 284-w 305 East Broad Street

Leave Your Car Here



THERE IS NO TIME LIKE THE PRESENT to have your car inspected and necessary repairs made. Then when you want to take a trip you know everything is in "apple pie" order, and you can thoroughly enjoy every minute of the time.

CONCENTRATED BOYCE-ITE
the new fuel ingredient
Removes the knock
Prevents carbon
Increases power

Full Line of Tires and Accessories

Clinton B. Woolston

STAR AND DURANT SALES AND SERVICE

BROAD AND MAIN STREETS, RIVERTON

Telephone 460 for Demonstration

Get them at Dreer's

SEEDS PLANTS BULBS

Largest collection of Hardy Perennials, Roses, Dahlias, etc., Palms, Ferns, and Decorative Plants of all kinds constantly at hand at our Riverton Nurseries. Orders taken for Bulbs, Flower and Vegetable Seeds, Fertilizers, Insecticides, Garden Tools, etc., which are supplied from our Philadelphia establishment; also, our Celebrated Lawn Grass Seeds, which may be relied upon for quick and permanent results.

CATALOGUES FREE.

HENRY A. DREER, Riverton, N. J.
SEED STORE, 714-716 Chestnut St., Philadelphia

Easter Excursion TO Atlantic City

SUNDAY, APRIL 20
SPECIAL TRAIN

Leaves	7:18 A. M.	Round Trip Fare
Burlington	7:18	\$2.20
Beverly	7:23	2.10
Delanco	7:28	2.05
Riverside	7:31	2.00
Riverton	7:37	1.90
Palmyra	7:39	1.85
Atlantic City	Arrive 8:47	

Returning, leave Atlantic City (South Carolina Avenue) 7:00 P.M.

Pennsylvania Railroad System
THE STANDARD RAILROAD OF THE WORLD

JOSEPH PIERGROSS

ALL KINDS OF CEMENT WORK
Porches, Sidewalks, Curbs, Brickwork, Foundations
Estimates Free

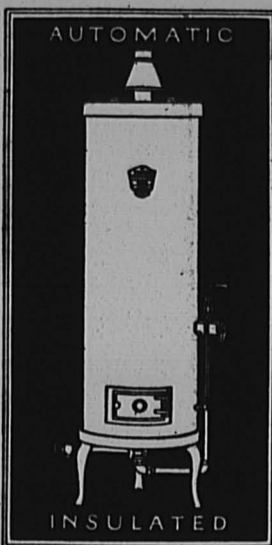
Second and Market Streets Palmyra
Phone: Riverton 427

Instant Hot Water with the PREMIER Water Heater

Built like a vacuum bottle of steel, with Asbestocel beneath its enameled outer jacket, the PREMIER storage-type heater keeps a tank of water always hot and ready for you when you turn the tap. No waiting. No waste. No lukewarm water.

Its first cost is low. It operates on surprisingly little gas. It runs itself automatically. It has no copper coils. Rugged and simple throughout, it is built to last.

See the dependable, economical, smart-looking PREMIER in operation at our Sales Rooms. Let us show you how you can heat water better with gas and at lower cost than ever before.



Premier No. 2
Keeps 23 gallons of hot water always ready

CLARENCE HUBBS

Plumbing, Heating and Roofing
627 Thomas Avenue, Riverton Telephone 354-M

There is a right-size Premier for every home

The COTTAGE GARDENER

Tomato Plants in Warm Window Box

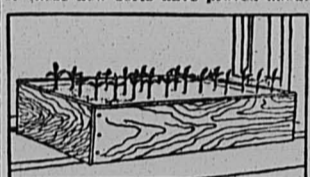
Sow Seed Early, Pot Tender Shoots, Then Transfer to Coldframe.

Early tomato plants for the home garden should always be started indoors, and, if possible, handled in pots or paper bands in a coldframe. By this method the first blossom cluster may be on the plants at the time that it is safe to set them outdoors. In the latitude of Washington, D. C., this is about May 10 and it is often possible to have ripe fruit by June 25 or at least by July 4.

Where there is no danger of loss from wilt disease, the Bonny Best is one of the most desirable varieties for the home garden. Earliana will give ripe fruit a little earlier, but the fruit is not quite as desirable as Bonny Best, so it is a good plan to have a few plants of Earliana, but make the main planting of Bonny Best. Tomatoes are among ten of the most desirable crops for planting in the home garden.

Twenty-five good, healthy tomato plants planted in the home garden will produce all of the fresh tomatoes that the family can use during the mid-summer months and a surplus for canning, says the United States Department of Agriculture. Planted in the ordinary manner about 3 by 4 feet apart, these 25 plants will occupy 300 square feet of space, or an area of 10 feet by 30 feet in size. Fifty to sixty tomato plants can be planted on the same piece of land if they are pruned and tied to stakes. The quantity of fruit produced by both methods is practically the same, but the first ripe fruit of the season will usually be obtained about five days earlier from the staked and pruned plants, and the fruit grown on the pruned plants is more uniform and is borne up off the ground where it is clean and appetizing. When it comes to enticement the staked and pruned tomatoes will, as a rule, continue to produce fruit until frost, and this is more than the plants which are left on the ground sometimes do.

Recognizing the fact that the ordinary varieties of tomatoes are subject to wilt disease which is carried in the soils of many gardens, scientists of the United States Department of Agriculture began several years ago to create varieties that could be grown on infected soils. Crosses were made and the new varieties thus produced were planted on soils where ordinary varieties had proved a failure the previous season on account of wilt. Some of these new sorts have proved about



Growing Plants in Boxes.

90 per cent resistant on these infected soils, and, furthermore, the fruit of these resistant varieties is quite good and suitable for general home use. Seed of the wilt resistant varieties, such as Norton, Marvel, and Norduke, is now offered by a number of the seed houses, and these varieties are recommended where the more common

Incubator Now Simplest Thing to Care For on the Farm

By EARL M. WHITNEY

What is there about the operation of an incubator that is so difficult? Why is it that so many people seem to feel that to hatch eggs by means other than the setting hen is a wonderfully intricate undertaking?

Those who have taken this attitude toward the incubator must surely have reached such a conclusion without investigating the matter very thoroughly. Perhaps it is merely that people have assumed that such was the case, or even worse—have operated an incubator according to their "own way of thinking" instead of following the manufacturer's directions. If the latter reason is the cause of complaint, then it is clearly no fault of the machine, for the very first requirement in the successful operation of an incubator is to follow the manufacturer's directions to the letter.

American Inventive Genius Makes Artificial Hatching Easy. Here again is an illustration of how poultry raising has been made easy. The reputable incubator manufacturer, like the reputable feed and remedy manufacturer, has devoted years of scientific investigation to the subject of incubation and today has developed artificial hatching to a degree that enables anyone to operate a machine if directions are followed and a reasonable amount of common sense used.

Numerous automatic devices have been installed in incubators which greatly simplify their operation. Poultry raisers who intend to hatch their own chicks should devote considerable time to investigation of the many new developments in the incubator field. It will prove both interesting and profitable. Not only have improvements been made in the hot-water and hot-air machines, but in brooders and hovers as well.

Electricity Now Available for Incubator Operation.

Electricity, too, has at last come into the field to stay, and there are electric incubators in use which are giving very good satisfaction. Electricity has been the means of great advancement in almost all lines of endeavor. Unquestionably it is still in its infancy. Its introduction to the poultry field is comparatively recent. That it will occupy an important place in poultry science no one will dispute. It is used in the poultry house to lengthen the daylight of the short winter days. That gives the hen an opportunity to consume more feed and thereby lay up a surplus for the manufacture of eggs. Now it becomes a factor in both incubating and brooding. It has made good and it will be interesting to note the extent to which it will finally become installed in the world of poultrydom.

How to Keep Informed of New Developments. This calls to mind a point which every poultry raiser, beginner and experienced, should bear in mind. Varieties, such as Bonny Best, Stone, Globe and others, have fallen prey to the wilt disease. The work of the scientists has not stopped with the production of the three kinds mentioned above, but they are going on making new crosses in an endeavor to improve upon the varieties already created and to secure sorts that are adapted to other purposes.

How to Keep Informed of New Developments.

Sweetened Sponge to Trap Bothersome Ants. Ants, thick as bees at swarming time, cause all kinds of trouble for the gardeners, florists, greenswardmen and housewives. A unique method of killing them by the hundreds is to soak a cheap sponge in sweetened water and place it where the ants play. The sponge serves as a trap. When the ants have crawled into the pores, miniature death caves, in the sponge, they are easily killed

perceived alike, will do well to remember. Rapid advancement in poultry science is being made. Scarcely a day passes but, that some new worth-while development is brought to light. Experimental work is constantly in progress. Poultry raisers should keep in touch with these new developments. The means of doing so are within the reach of all. That is the purpose for which such institutions as the Pratt Institute at Philadelphia have been established. The Pratt Food company of that city has for many years maintained an experimental station at Morton, Pa., to enable it to give poultry farmers this very information. Questions are answered without charge and bulletins are issued from time to time which explain the most modern and up-to-date methods of poultry production. This is indeed a forward step. The company early realized that its own prosperity was closely allied with that of the poultry farmers of the country, and its corps of experts have been working for years to improve production methods. The recently established Pratt Institute is the "broadcasting station" from which the results of this extensive experimental work may be secured.

Classes of Incubators to Choose From. Poultry raisers are frequently puzzled over the question of the kind of incubator to use. There are many excellent makes of machines on the market, the selection from which should be largely a question of size and personal liking. Incubators are divided into two classes, "mammoth" machines and small machines. Mammoth incubators run in sizes from 1,200 up to 40,000 egg capacity and their use is confined almost entirely to the large specialty poultry farms and commercial hatcheries. The construction is generally sectional and the source of heat, hot water. Small incubators usually range in size from 50-egg capacity to 600 or 800-egg capacity. There are various types and they are usually referred to according to the manner in which they are heated—hot-water or hot-air machines. Excepting in the electric machines, an oil-burning lamp is the usual means of heat. Requirements Determine Size of Machine to Select. Many poultry raisers make the mistake of buying too large a machine for their requirements. This results in a tendency to save eggs for hatching over too long a period before incubation. It would be a better plan on this basis to buy two smaller machines, thus permitting the operation of one before sufficient eggs are accumulated for the other. Hatching eggs should not be more than a week to ten days of age if best results are to be secured.

Requirements Determine Size of Machine to Select. Many poultry raisers make the mistake of buying too large a machine for their requirements. This results in a tendency to save eggs for hatching over too long a period before incubation. It would be a better plan on this basis to buy two smaller machines, thus permitting the operation of one before sufficient eggs are accumulated for the other. Hatching eggs should not be more than a week to ten days of age if best results are to be secured.

Requirements Determine Size of Machine to Select. Many poultry raisers make the mistake of buying too large a machine for their requirements. This results in a tendency to save eggs for hatching over too long a period before incubation. It would be a better plan on this basis to buy two smaller machines, thus permitting the operation of one before sufficient eggs are accumulated for the other. Hatching eggs should not be more than a week to ten days of age if best results are to be secured.

Requirements Determine Size of Machine to Select. Many poultry raisers make the mistake of buying too large a machine for their requirements. This results in a tendency to save eggs for hatching over too long a period before incubation. It would be a better plan on this basis to buy two smaller machines, thus permitting the operation of one before sufficient eggs are accumulated for the other. Hatching eggs should not be more than a week to ten days of age if best results are to be secured.

Requirements Determine Size of Machine to Select. Many poultry raisers make the mistake of buying too large a machine for their requirements. This results in a tendency to save eggs for hatching over too long a period before incubation. It would be a better plan on this basis to buy two smaller machines, thus permitting the operation of one before sufficient eggs are accumulated for the other. Hatching eggs should not be more than a week to ten days of age if best results are to be secured.

WHY

Shouldn't Every Person in Whose Home there is a Meter be a Public Service Partner?

THE SPREAD OF CUSTOMER OWNERSHIP OF PUBLIC UTILITIES IS AN OUTSTANDING FEATURE OF THE FINANCIAL HISTORY OF THE LAST FEW YEARS. THE THEORY THAT THOSE WHO USE GAS, ELECTRICITY AND LOCAL TRANSPORTATION, SHOULD BE PARTNERS IN THE COMPANIES THAT FURNISH THESE SERVICES HAS BEEN ACCEPTED BY HUNDREDS OF THOUSANDS OF AMERICAN CITIZENS.

PHILADELPHIA CAMDEN
PATERSON MONTCLAIR NEWARK
ELIZABETH GARFIELD JERSEY CITY
PRINCETON RUTHERFORD BAYONNE
TRENTON PASSAIC HACKENSACK
RIDGEWOOD WEEHAWKEN
HOBOKEN
THE AMBOYS

In New Jersey Alone, More Than 40,000 Customers Have Become Partners of

PUBLIC SERVICE CORPORATION OF NEW JERSEY

By Subscribing to

7% CUMULATIVE PREFERRED STOCK

Under Our Customer Ownership Plan of Partial Payments.

Ask Any Public Service Employee

Ford Steel Body Truck \$490

L. E. B. Detroit

Why Commercial Users Prefer the Ford

There is much significance in the fact that more than 75% of all commercial cars of one-ton capacity or less in the United States are Fords.

This overwhelming preference for Ford haulage units has its basis in the low cost of Ford transportation, the rugged construction of the truck itself, and its unusual adaptability to every line of industry.

Mechanical excellence, simplicity of design and ample power are further factors that have contributed to the popularity of the Ford One-Ton Worm Drive Truck.

The Ford One-Ton Truck equipped with an all-steel body and cab is now available as a complete unit, priced at \$490 L. E. B. Detroit. Screen sides and canopy roof that may be easily fitted to this unit are supplied at small additional cost.

Ford Motor Company

Detroit, Michigan

See the Nearest Authorized Ford Dealer

Need Coal? Phone 231



Use Your Head to Think Ahead

At prices named below you can save a right sizeable sum on your next winter's coal bill. You'll save an even larger sum if you'll "get next" to the trick of using a layer of Buckwheat Coal to top off each layer of big coal. And still a greater saving if you will use Buckwheat to bank your fire at night.

New Prices for Immediate Delivery

Egg, \$13.50 Stove, \$14.00 Nut, \$14.00
Pea, \$11.00 Buckwheat, \$7.50

H. B. WILLIAMS

Below Arch Street Station PALMYRA, NEW JERSEY
Orders taken at residence, 616 Garfield Avenue
Phone, Riverton 313-R

Boyce-ite

You have seen it advertised in the magazines and daily papers

THE CLAIMS MADE FOR IT HAVE NOT BEEN EXAGGERATED. YOUR NEIGHBOR USES IT—ASK HIM

BOYCE-ITE is a secret oil compound, instantly soluble in gasoline. It should be poured directly into the gas tank.

Four ounces of BOYCE-ITE will treat ten gallons of gasoline. This proportion produces, without mixing, a rapid firing, carbon-destroying fuel—in every way superior to plain gasoline.

Motors using BOYCE-ITE treated gas continuously in the above proportions will be kept constantly in the very best of condition. They will have more power, greater flexibility; give from one to six miles per gallon greater mileage, and will never develop carbon trouble.

We guarantee that BOYCE-ITE will remove all carbon knocks if given sufficient time

A Dollar Package

contains three four-ounce cans—enough to treat thirty gallons of gasoline.

- 1/2 gal. can \$3.50 (Treats 160 Gals. of gasoline)
- 1 gal. can 6.00 (Treats 320 gals. of gasoline)
- 5 gal. can per gallon 5.00 (Treats 1,600 gals. of gasoline)

Full Line of Tires and Accessories

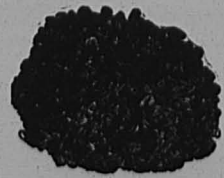
Clinton B. Woolston

STAR AND DURANT SALES AND SERVICE
BROAD AND MAIN STREETS, RIVERTON
Telephone 460 for Demonstration

METAL SPONGE

The Most Perfect Polisher and Cleanser for Aluminum and All Kitchen Utensils

WILL NOT SCRATCH—WILL NOT RUST—WILL NOT INJURE HANDS



INTRODUCTORY OFFER

To place this Metal Sponge in your kitchen we are making a Special Offer during the week of April 28th to May 3d.

For these six days you can buy Metal Sponge for 9 cents each, \$1.00 per dozen

SEE WINDOW DISPLAY

JOHN H. ETRIS
THE WINCHESTER STORE
Phone, 81-J Palmyra, N. J.

USE WITH SOAP AND WATER

Herbert W. Richman
623 Linden Avenue
Riverton, N. J.

CUT FLOWERS OF ALL KINDS
Ferns and Other Plants

SHOES

insure your family's health
Visit your Shoe Doctor today
Automobile Curtains Repaired
CHARLES TURNER
509 Howard Street
RIVERTON
Phone 282-w

Riverton Fish Market

505 Main Street
OYSTERS CLAMS
FRUIT
Phone 68-M
M. KRAACKE, Prop.

SCHOOL FUND DIVISION PLAN

Commissioner Enright Advocates Distribution on Basis of 3 Cents Per Day's Attendance.

RADICAL CHANGE IN METHOD

Trenton.—Plans for a radical change in the method of distributing state school funds were formally presented to the State Board of Education and met with vigorous opposition from the superintendents of school departments of some of the principal cities of the state.

The tentative program for the distribution of school moneys was prepared and presented by State Commissioner of Education John Enright, and the basis proposed is similar to that provided in the Whitney bill, which was defeated by the legislature during its last session.

Under the present system school moneys are allocated to the counties on the basis of ratables and enrollment of children. Commissioner Enright advocates that the distribution be made on a basis of not less than 3 cents per day's attendance. Opposition to this plan was expressed by Superintendent of Schools David E. Corson of Newark, Superintendent Edward A. Murphy of Jersey City and Superintendent William J. Bickett of Trenton.

Trenton Schools Fear Loss Adoption of the proposed method, Mr. Bickett said, would result in the loss of substantial financial support by the schools of Trenton and would have a corresponding effect upon the efficiency of the school system and also upon the financial burdens to be borne by the taxpayers of the city.

An equitable allotment, with some source of additional income, is necessary for the schools of the state, Mr. Bickett said. He said that the problem of assisting the rural districts without at the same time penalizing the larger municipalities is one that the state board is called upon to solve.

A similar view was taken by the heads of the Newark and Jersey City school departments, who argued that the method would result in taking money from the more populous cities, where tax assessments are high, and turning it over to the rural counties, where taxes are notoriously low. Statistics were submitted by Superintendent Enright supporting his contention that the rural, less developed school districts in the smaller counties are not benefited by the allotment of funds, while wealthy communities like Morristown, in Morris county, receive assistance out of proportion to their needs.

Action is Deferred In order to permit of further study of Commissioner Enright's suggested plan the question of approval or rejection of Commissioner Enright's plan was laid over for action at the May meeting. The funds are for distribution in September next.

The school moneys in question, amounting to approximately \$10,000,000, come from the taxes on main steam railroad property. There is a fund designated as a 10 per cent reserve amounting to \$1,000,000. The year these reserves amounted to \$41,950. The balance was not allotted.

At the suggestion of Commissioner Enright the two and one-half hour school day for first grade pupils, adopted during the war because of limited school accommodations throughout the state, was discontinued and the four hour day will be resumed.

JERSEY ROAD BOOMERS SCORE

State Commission Gives Approval to Harding Highway and Delsea Drive.

GOOD ROUTES TO RESORTS

Improvement, Soon to Be Started, Will Involve Several Millions—Industrial Building for State Hospital.

Trenton.—The State Highway Commission voted to take over as part of the State highway system and improve the roads between Penns Grove and Atlantic City, known as the Harding highway, and also the route between Westville and Millville, the so-called Delsea drive. The cost of improving these roads will run into millions and the money for the improvement will come from the State vehicle funds.

Delegations from many South Jersey towns appeared at Atlantic City on behalf of the proposal. Especially well represented were Gloucester and Salem counties by reason of the fact that the highways for which improvements are sought lie for the most part within their limits. The section of Cumberland county around Vineland and Millville also had a good delegation present.

All of the boards of freeholders of the counties through which these routes pass had adopted resolutions requesting the commission to make them State highways. The chief argument for the Delsea drive is the fact that it requires only 11 or 12 miles of paving between Gloucester and Malaga and about 5 miles from Malaga to Downtown, to provide a fully paved highway all the way from Camden into Atlantic City. The paving from Malaga to Millville would add about 18 more miles to be improved on the route to Cape May and the lower coast resorts. The right of way on

this route is nearly 50 feet, and there is already paving 20 feet wide from Camden to Glassboro.

On the Harding highway there is about 18 miles in Salem county and 7 miles in Gloucester county still unpaved. The paving of the stretch between Downtown and Malaga would immediately benefit both routes. This road also has a broad right of way and the section near Malaga is now in very good condition. This strip is one of the first pieces of roadway constructed by convict labor in this State several years ago. It is gravel. Interest in this route extends beyond the borders of New Jersey, for when it is fully paved it will be possible to ride all the way from Washington, D. C., to Atlantic City over improved highways. Even the ferry trip between Wilmington and Penns Grove is to be shortened from 45 to 30 minutes by the establishment of a new ferry slip for motorists at the new Wilmington port near the mouth of the Christians River. This has the further reputation of being the first memorial road dedicated to the late President Harding in the whole country.

Several hundred prominent residents of South Jersey, including Senators, mayors, representatives of boards of freeholders, chambers of commerce and county engineers, participated in the hearing.

General Hugh Schott, chairman of the Highway Commission, presided at the meeting, and President Firman Reeves, of the Senate, was chairman of the citizens' delegation. State Senators Borton, of Salem; Bright, of Cape May; and Das, of Gloucester, made addresses urging the commission to maintain and rebuild the unimproved portions of these roads. Senators Davis and Borton each headed delegations of 200. At the close of the hearing General Schott said that the commission has realized the importance of the two routes in South Jersey since its visit here last June. He said that the fact that the southern part of the state has no member on the commission "has given its four members."

Samuel P. Leeds, president of the Atlantic City Chamber of Commerce, quoted an automobile statistic to show the importance of the undertakings. He said that last year 100,000 automobiles crossed the Penns Grove ferry, as against 900 in 1912. Walter J. Busby, president of the Good Roads Association, was another to make an eloquent plea in behalf of the routes.

Miss Mable Clay, of Beesley's Point, made an effective address urging the adoption of the roads, the only woman speaking before the commission. Miss Clay is a daughter of the late Henry Clay, one-time Select Councilman and political leader of Philadelphia.

Half-Mill Tax to Meet Cost Final approval was given to detailed plans for improvements at the state hospital at a meeting of the board of managers in Morris Plains. The improvement are to be paid for out of the half-mill tax, which the Legislature of 1923 ordered collected for this purpose.

To those who are familiar with the state hospital's needs, relief of existing congestion is the most necessary improvement, and this is to be very largely brought about by the plans approved, which likewise have the approval of the State Board of Control. But there is a surprise in the plans for friends of the institution, in the fact that they provide for at least the first unit of an industrial building which will enable the occupational therapy department to be moved out of its present basement quarters and given an environment of direct sunlight and fresh air.

Dr. Marcus A. Curry, superintendent of the hospital, said the provision of such a building had been long under consideration, but it had not been possible heretofore to discuss it as a possibility, because it was not known whether the funds available would allow its inclusion in the present program. Certain changes now practically assured, in other tentative phases of the program, made it possible to announce, however, that at least the initial unit of an industrial building would be provided. While Dr. Curry could not go into details, it is understood that the probable sum to be allocated to this purpose out of the \$2,250,000 to be expended, may reach \$200,000.

Occupational therapy is the use of various industries, such as the making of willow furniture, the manufacture of brooms, and other handicrafts, to restore the mentally unbalanced to normal functioning by retaining their mental co-ordination through the manual arts. It has been credited with a very large contribution to the recovery and improvement rate at Morris Plains under the especially adverse condition of overcrowding.

Blueprints of Program Blueprints submitted at the meeting show that the program of improvements at the hospital include a 250-bed reception building, with modern equipment for the treatment of acute disturbed patients and the classification of new commitments. This will be placed some distance in front of the new clinical treatment building completed last year, and there will be between the two a modern kitchen and refectory building fitted to serve the new group of buildings.

A feature of this equipment will be a vacuum system of delivering hot food to the various buildings to be served, the wheeled containers being taken through tunnels to be provided for access between the various buildings.

In addition the plans call for two convalescent buildings, one for males and the other for females, each to provide accommodation for thirty patients, and both to conform as nearly as possible to home-like conditions. Designed for patients under final observation before discharge, these buildings are planned along the lines which Commissioner Burdette C. Lewis urged upon the Essex freeholders when they were considering additions at Overbrook Hospital.

Feed Loss of Canal Many farmers who used the Morris Canal as a watering place for their cattle are disturbed by the passing of the old waterway. In some cases they will have to go a considerable distance for a supply. Trappers also suffer as they are losing out, as the canal banks and its environs have always been plentiful in muskrats.

A Card of Character

A Card is much like a man, after all! The more character, the more power he has. The more character in your card, the more power it has.

The Peerless Patent Book-form Card

has more character than any card you have ever heard of before! It can be beautifully engraved, or it can be neatly printed, as the user desires. It is necessarily always clean, because of the binding in book form with tissue paper between each card, and the book form also keeps it from becoming wrinkled or crumpled. Besides it is always "right there" when you need it.

Can you think of more character for a card?
These cases come in four sizes with cards to fit.
Will be glad to show you samples at our office.

THE NEW ERA
Riverton, N. J.

Waverly Prints and Cretonnes

are two of our many new samples we have this spring. They are of good quality, splendid colors, new designs and make lovely hangings, cushions and covers for summer furniture. Priced from 65c yard up.

Ye Upholstery Shoppe
"The Sign of Quality"
WILL K. BOWEN
Roberts Bldg., 2nd fl., Main St.
Phone, Riverton 201-w

ICE CREAM AND FANCY CAKES

CHEW BROS.
512 Main St., Riverton
Bell Phone 154

William J. Parker
325 Leconey Ave., Palmyra
Telephone: Riverton 150-M

LESLIE W. REEVES
WATCHMAKER

612 Lippincott Avenue, Riverton
References as to ability furnished upon request

Milady's Beauty Shoppe
306 Broad Street
RIVERTON, N. J.

Hair Dressing a Specialty
Scalp Treatment, Facial Massage
Hair Dyeing, Marcell Waving

Also residential calls by appointment
Phone Riverton 88-M

CONWELL'S OYSTER HOUSE

Fish, Clams, Salt Oysters
Crab Meat, Poultry
Oysters and Deviled Crabs
Fried for Parties and Delivered
on Short Notice
By phoning Riverton 88-J

Supreme Quality Safety Ink

NON-FADING
NON-SPOILING
FREE-FLOWING

Will NOT wash from paper
WILL wash from hands
and clothing
Will not clog, rust, corrode
or gum in pens or
ink wells

The New Era Office
Riverton

A Hand for a Tongue.
Some people conduct themselves in a way to suggest that they would have been much happier if the Lord had given them two tongues and but one hand.

Get them at Dreer's

SEEDS PLANTS BULBS

Largest collection of Hardy Perennials, Roses, Dahlias, etc., Palms, Ferns, and Decorative Plants of all kinds constantly at hand at our Riverton Nurseries. Orders taken for Bulbs, Flower and Vegetable Seeds, Fertilizers, Insecticides, Garden Tools, etc., which are supplied from our Philadelphia establishment; also, our Celebrated Lawn Grass Seeds, which may be relied upon for quick and permanent results.

CATALOGUES FREE.

HENRY A. DREER, Riverton, N. J.
SEED STORE, 714-716 Chestnut St., Philadelphia

BUY YOUR

Ford Car or Truck

OF

Joseph W. Friday

Authorized Sub-Dealer of
Palmyra Motor Company

502 Main Street, Riverton Bell Phone 52-w

JOSEPH PIERGROSS

ALL KINDS OF CEMENT WORK

Porches, Sidewalks, Curbs, Brickwork, Foundations.
Estimates Free

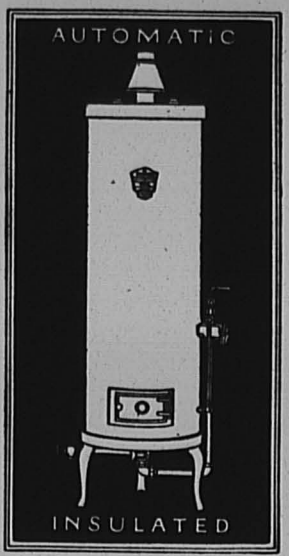
Second and Market Streets Palmyra
Phone: Riverton 427

Instant Hot Water with the PREMIER Water Heater

Built like a vacuum bottle of steel, with Asbestos beneath its enameled outer jacket, the PREMIER storage-type heater keeps a tank of water always hot and ready for you when you turn the tap. No waiting. No waste. No lukewarm water.

Its first cost is low. It operates on surprisingly little gas. It runs itself automatically. It has no copper coils. Rugged and simple throughout, it is built to last.

See the dependable, economical, smart-looking PREMIER in operation at our Sales Rooms. Let us show you how you can heat water better with gas and at lower cost than ever before.



Premier No. 2
Keeps 23 gallons of hot water always ready

CLARENCE HUBBS

Plumbing, Heating and Roofing
627 Thomas Avenue, Riverton Telephone 354-M

There is a right-size Premier for every home

Insurance Will Safeguard Your Home

your Furniture, and your Household Goods

ADA E. PRICE

Notary Public All Kinds of Insurance Conveyancing
416 Lippincott Avenue, Riverton Phone 242-M



A wise man said:
"THE investments of youth constitute the cornerstone of contentment in later years. The young man who saves and invests wisely protects himself against the financial worries that destroy happiness."

THRIFT
The Cornerstone of Contentment

There is no better way to save and invest wisely than by buying

7% CUMULATIVE PREFERRED STOCK

PUBLIC SERVICE CORPORATION OF NEW JERSEY

Under Our Customer Ownership Plan of Partial Payments.

Ask Any Public Service Employee

EXECUTORS' NOTICE

Estate of Charles Walter Joyce
Notice is hereby given that an order has been made by the Surrogate of the County of Burlington, bearing date on the 25th day of March, 1924, upon the application of the subscribers, executors, requiring the creditors of Charles Walter Joyce, deceased, late of the County of Burlington, to bring in their claims against the estate of said decedent on or before the 15th day of May, 1924, or they will be deemed of any action therefor against the said executors.

MARY A. JOYCE,
J. LEON JOYCE,
WALTER M. JOYCE,
Executors.

JOSEPH L. THOMAS, Proctor.
Dated March 25, 1924. 3-27 to 5-20

EXECUTOR'S NOTICE

Estate of James L. Nieschik
Notice is hereby given that an order has been made by the Surrogate of the County of Burlington, bearing date the 13th day of March, 1924, upon the application of the subscribers, executors, requiring the creditors of James L. Nieschik, deceased, late of the County of Burlington, to bring in their claims against the estate of said decedent, on or before the 15th day of May, 1924, or they will be deemed of any action therefor against the said executors.

ALICE H. NIESEKIRK,
William D. Lippincott, Proctor. 3-20 5-22

United States Department of Agriculture

Department of Agriculture
Washington, D. C.
Office of the Secretary
Washington, D. C.
April 19, 1924.
The following regulations are hereby issued in accordance with the provisions of the Act of Congress approved March 4, 1917 (39 Stat. 117) and the Act of Congress approved March 4, 1917 (39 Stat. 117) and the Act of Congress approved March 4, 1917 (39 Stat. 117).
Section 1. These regulations shall apply to the interstate movement of any article of commerce, including but not limited to, live animals, plants, and products of plants and animals, which are subject to the control of the Department of Agriculture.
Section 2. No article of commerce shall be transported interstate without a certificate of inspection issued by the Department of Agriculture.
Section 3. The certificate of inspection shall be issued only after the article has been examined and found to be free from any pest, disease, or other condition which is injurious to the health, safety, or welfare of the United States.

Notice is hereby given that an order has been made by the Surrogate of the County of Burlington, bearing date on the 25th day of March, 1924, upon the application of the subscribers, executors, requiring the creditors of Charles Walter Joyce, deceased, late of the County of Burlington, to bring in their claims against the estate of said decedent on or before the 15th day of May, 1924, or they will be deemed of any action therefor against the said executors.

Notice is hereby given that an order has been made by the Surrogate of the County of Burlington, bearing date on the 25th day of March, 1924, upon the application of the subscribers, executors, requiring the creditors of Charles Walter Joyce, deceased, late of the County of Burlington, to bring in their claims against the estate of said decedent on or before the 15th day of May, 1924, or they will be deemed of any action therefor against the said executors.

beets, shall be subject to such control measures as may be necessary to prevent such... As a condition of certification by the United States Department of Agriculture, the following regulations are hereby issued in accordance with the provisions of the Act of Congress approved March 4, 1917 (39 Stat. 117) and the Act of Congress approved March 4, 1917 (39 Stat. 117) and the Act of Congress approved March 4, 1917 (39 Stat. 117).

make the reports specified below both as to sales to points outside of the area and as to sales within the area. Failure to submit such reports will lead to refusal of certification of shipments to points outside of the area. Blank shipping lists will be supplied upon request. These lists should be filled out for the kinds of plants and numbers of each kind, the name and address of the grower, the name and address of the shipper, the date when the shipment is made, the date of shipment, and should be signed by the shipper. All the information requested in this notice should be sent to the following address: National Quarantine Laboratory, 311 North 3rd Street, Philadelphia, Pa. 19106.

(1) Shipments to Points Outside of the Regulated Area. All shipments, including but not limited to, live animals, plants, and products of plants and animals, which are subject to the control of the Department of Agriculture, shall be transported interstate only after the article has been examined and found to be free from any pest, disease, or other condition which is injurious to the health, safety, or welfare of the United States.

New Books at Riverton Library



Of fiction, as of poetry, it may be said in Wordsworth's phrase, that its true mission is to console the afflicted, to add sunshine to daylight by making the happy, happier, to teach the young and gracious of every age to see, to think and feel, and therefore to become more actively and sincerely virtuous.—From English Fiction, W. J. Dawson.

- List of New Books including 'Divisions of Dawson', 'The Wrath to Come', 'The Lost Naval Papers', 'The Wrath to Come', 'The Wrath to Come'.

LUTHERANS BREAK GROUND

Ceremony Will Take Place at Broad and Garfield Avenue at Four O'clock, Sunday

Sunday afternoon at four o'clock the First Lutheran Church of Palmyra and Riverton will fittingly celebrate the breaking of ground for the erection of the new Sunday School building.

Did You Ever Stop to Think?

By E. R. Waite, secretary, Shawnee, Okla., Board of Commerce. That—the business men of your city have a desire to see your city grow and keep growing; and that they have the ability to carry that desire to a successful conclusion if properly supported.

Work Started on Baseball Diamond

On Tuesday Fletcher Street of Beverly, was in Riverton and set the stakes giving the grade for the new baseball diamond to be constructed in the memorial park. It will be located at Eighth and Cedar streets.

Secretary Melcher Resigns

April 21, 1924. Palmyra Ambulance Association, Mr. S. G. Snelson, President, Palmyra, N. J. Dear Sir: Recent happenings in the Ambulance Association make it impossible for me to continue as secretary and to promote the best interests of the Association as I have always endeavored to do in the past.

Wisner-Carter

Another whirlwind romance culminated with an elopement to Elton, Md., Saturday afternoon when Horace H. Wisner, son of Mr. and Mrs. Samuel H. Wisner, of Parry avenue, and Miss Elsie Carter, of Oaklyn, N. J., were married.

Go All the Way!

Editor of The New Era: I am glad to learn that the Borough council is considering widening Main street and only hope they will make a good job of it by going all the way to the Borough line while they are about it. I believe it will only be a very few years before this will have to be done and I think it would be a big mistake to stop at Seventy street, as I hear some talk of.

Epworth Women Meet

Last Thursday evening at the Epworth Methodist Church there was a large gathering of the women members. The program for the evening was worked out by a general committee made up of representatives from all of the women's organizations of the church.

I. O. O. F., Palmyra

At the last session of Cinnaminson Lodge held Friday evening, April 18, another new feature was added to the activities of this particular lodge, via a Glee Club, the direct outgrowth of the Radio Club's latest success in staging the playlet, "Millions in It," given on the occasion of "Ladies' Night" the week previous.

MEDALS FOR LIFE SAVING

Awards to Be Made to Public Service Employees. President Thomas N. McCarter, of Public Service Gas Company, recently made a medal to be awarded to employees of gas companies who save by the prone pressure method of resuscitation the lives of those who become victims of gas asphyxiation.

How "Fenimore" Came to be James Cooper's Middle Name. With the purchase of the home of James Fenimore Cooper, in Burlington, by the Burlington County Historical Society, added interest in that author and his works has been manifested in this section.

Language of the Day

By Big Ben. Being an account of a conversation between two girls of the present day. For the benefit of the ignorant we print a glossary at end of article. 'Ist Girl—'Lo Mannie, how's everyting?'

Wrestle—Dance.

Smith Brother—'One of the Smith Brothers who never coughs up.' Dime Box—'Taxi Cab.' Noshbagery—'Restaurant.' Noodle Juice—'Tea.' Orient—'Choy Suey.' Gimlet—'Bore.' Airedale—'A homely gent.' Kale—'Money.' Cake Basket—'Limousine.' Dog Kennels—'Shoes.' Corn Shredder—'Young gent who dances on partner's feet.' Police Dog—'Male fiancée.' Mad Money—'Money fapper carries in case of row with escort, to take her home along with the street car.' Handcuff—'Engagement ring.' Eye Opener—'Marriage.' Clothes Line—'Female gossip.' Umbrella—'Young gent any flapper can borrow for an escort.' Apple Sauce—'Flattery.' Edisoned—'Ask a lot of fool questions.' Whangdoodle—'Jazz music.' To Blouse—'To go.' Johnnie Walker—'Tight wad who never takes a taxi.' Isn't this foolish talk?—'The Boomerang.' Cleanup Week—Cleanup Up!

Costs No More to Feed Bigger Profit-Making Pure Bred Hens

The prospective poultry raiser should give first consideration to the selection of a good stock is the first of the three big essentials to success with hens. To breed healthy, productive fowls, one must have foundation stock of the very best it is possible to secure. Show stock of great elegance is not a necessity, but standard-bred fowls of strength and vigor are. You do not want to start with any other than pure bred stock. While the original cost may be greater, the result in the end is success with the one and almost certain failure with the other.

There is No Best Breed.

Perhaps the most frequent question the poultry breeder is asked is this: What is the best breed or variety of breed to raise? It generally depends upon the poultryman to whom you address your questions as to what the reply will be. If he raises White Plymouth Rocks himself, no doubt he will tell you, as does U. B. Fitchel, one of the world's leading White Rock breeders, that Plymouth Rocks of the White variety are the best fowls to raise; if you happen to ask the question of a Barred Plymouth Rock fancier, then it will probably be Barred Rocks that you must raise to succeed, and should you ask the question of a Rhode Island Red enthusiast, why then there is absolutely nothing to it—Reds always were and always will be the best breed.

Where Platinum is Found.

Platinum is found in small gray particles, along with other metals including gold and chrome-iron. Occasionally it is discovered in the form of nuggets, which are naturally extremely valuable. A 25-pound nugget of platinum would at the present time be worth over \$30,000.

PACK OF NEW JERSEY DIRECTS CAMPAIGN FOR FOREST POLICY IN U. S.

Charles Lathrop Pack, of Lake wood, N. J., is directing the educational campaign for a national forest policy. He has just given a thousand acre demonstration forest to the New York State College of Forestry at Syracuse and established annual prizes for the best popular articles by forestry students in several colleges in various parts of the country.

Machine Stitched Soles

assure a lasting job in shoe repairing, and all the mending work we do is permanent in its character. Skilled workmen, using the best leather, and the best machinery, perform the best and most satisfactory work in a short time, and you get back your shoes well pleased with both job and price.

Riverton Electric Shoe Repairing

Broad and Main Satisfaction Guaranteed

ANNUAL WATER RATES of the RIVERTON AND PALMYRA WATER COMPANY

All persons wishing to connect with the public water supply, may do so by applying for a contract and filing it with the Company at the office, Broad and Main Streets, Riverton. RATES: 1/2-in. including 10,000 gallons \$3 per quarter; 3/4-in. including 12,000 gallons \$4 per quarter. Special contracts on large meters EXCESS: First 25,000 gallons 30c per 1000 gallon; Second 25,000 gallons 25c per 1000 gallon; All over 50,000 gallons 20c per 1000 gallon when rendered. Bills rendered quarterly and due when rendered. For convenience of patrons, bills may be paid at Cinnaminson National Bank. We aim to give good service. Any complaints will receive prompt and courteous attention if addressed to the Office of the Company, Broad and Main Streets, Riverton, N. J. Phone Riverton 147. Office Hours: Closed Sunday 12.30 8.30 to 4.30 daily.

Spring and Summer Underwear

- Are your needs supplied, or are there a few 'fill-ins' needed? Men's medium-weight Union Suits, \$1.25 and \$2.00; Men's plaid muslin Athlete Union Suits, \$1.00 to \$1.35; Men's Sealpax Shirts and Drawers, 85c each; Men's Athlete gauze Shirts and Drawers, 50c each; Men's gauze short sleeve Shirts and long Drawers, 85c each; Ladies' knitted Union Suits in various styles and prices ranging from 65c to \$1.00; Ladies' Sealpax Union Suits, \$1.75 to \$2.00; Ladies' Vests, all styles and prices, from 25c to 50c; Boys' Athlete Union Suits in gauze and plaid muslin, 75c and 85c; Little Brother and Sister Union Suit, \$1.00; Children's gauze Vests and Drawers, 35c; Misses' Ribbed Vests, 25c.

MRS. ALFRED SMITH

414 Main St., Riverton Phone, Riverton 199-R

Genuine Spring Lamb advertisement featuring an illustration of a lamb and text: 'We have in stock Genuine Spring Lamb—the first of the season. Small Legs, Shoulders and Chops. Fresh Killed Spring Killing Chickens, about 2 lbs. average.'

WILLIAM N. MATTIS BUTCHER COLLINS BUILDING, RIVERTON Telephone 86

Your Neighbor Buys COAL FROM Geo. M. Harris & Sons THERE'S A REASON Yards, Burlington Pike at Pensauken Creek Phones, 240, Evening 333

Quick Delivery Service for Your Convenience \$8.50 and up Verna L. Guest Exclusive Millinery Broad and Garfield Avenue, Palmyra Open Monday, Friday and Saturday evenings Telephone Riverton 517