

A dark, atmospheric photograph of a server room with rows of server racks and overhead lighting.

FS S3900 Series Switches Data Sheet

Contents

Product overview	3
Product highlights	4
Platform details	5
Platform benefits	13
Software requirements	14
Product specifications	14
Quality certification	18
Optics supported	18
Warranty, service and support	18
Ordering information	19
Additional information	19
Document history	19

Product overview

FS S3900 series switches are high-performance Gigabit Ethernet L2+/L3 Lite managed switches with 128Gbps/176Gbps switching capacity. They are ideal Gigabit access switches for SMB, enterprise, and campus networks.

FS S3900-R series switches is a next-generation aggregation 10GE switch with 24 or 48 1G ports and 4 or 6 10G uplinks. It is targeted at the IP MAN (metropolitan area network), government and enterprise networks. It supports functions such as powerful ACL, flexible QinQ, 1:1 or N:1 VLAN switching, Ethernet OAM, carrier-level QoS and industry-level 10GE Ethering, ensuring this switch series meets application requirements in all kinds of complicated sites.

The S3900-24T4S, 24-port Ethernet L2+ stackable switch has 24x Gigabit RJ45, with 4x 10Gb SFP+ Uplinks. The S3900-48T4S, 48-port Ethernet L2+ stackable switch has 48x Gigabit RJ45, with 4x 10Gb SFP+ Uplinks. The S3900-24F4S, 20-port Ethernet L2+ stackable switch has 20x 1Gb SFP, 4x Gigabit Combo, with 4x 10Gb SFP+ Uplinks.

S3900 Series switches adopt the most cutting-edge Broadcom chip, can provide 128/176 Gbps switching capacity and 95/130 Mpps forwarding rate. With 1 and 10 Gb connections and advanced QoS to the edge of the network, while maintaining simple management. The S3900 series is an ideal Gigabit access and aggregation switch, designed for small and medium-sized enterprises, enterprises, mid-market and branch networks, which can reduce the total cost of ownership.

S3900-24T4S-R is an advanced Layer 2 Plus (Layer 3 Lite) Gigabit managed stackable switches with 24x 10/100/1000BASE-T and 4x 10Gb SFP+ uplinks, dual redundant power supplies and the fanless design guarantees the switch always working silently, and ensures that the power supply of the switch will not be interrupted even if it fails, providing improved ease of use, highly secure business operations, improved sustainability, and a borderless network experience. S3900-24F4S-R is an advanced Layer 2 Plus (Layer 3 Lite) Gigabit managed stackable switches with 8x 1G RJ45/SFP Combo, 16x SFP ports, 4x 10G SFP+ uplinks, dual redundant power supplies and dual fans design guarantees the stable operation of the switch, providing improved ease of use, highly secure business operations, improved sustainability, and a borderless network experience. S3900-48T6S-R is an advanced Layer 2 Plus (Layer 3 Lite) Gigabit managed stackable switches with 48x 10/100/1000BASE-T and 6x 10Gb SFP+ uplinks, dual redundant power supplies and dual fans design ensures that the power supply of the switch will not be interrupted even if it fails, providing improved ease of use, highly secure business operations, improved sustainability, and a borderless network experience.

The S3900-R series switches support stacking capability with 1 and 10 Gigabit connectivity and advanced QoS to the network edge, while maintaining simple management. Ideal Gigabit access and aggregation switches designed for SMB, enterprise, midmarket, and branch office networks to provide lower total cost of ownership.

I Product highlights

- Broadcom Chip, Support Up to 6 Units Stacking Between S3900 Series
- No Broadcom Chip, Support Stacking Between S3900-R Series
- 1+1 Redundant Power Supplies for S3900 Series
- Dual Power Supplies for S3900-R Series
- Support QoS, LACP, ACL, VLANs, DHCP, ERPS, etc.
- IPv4/IPv6 Dual Protocol Stack
- Support CLI/WEB/SNMP/SSH for Flexible Operation
- Network Monitoring through Sampled Flow (sFlow)
- Support SSH, ACL, 802.1X, RADIUS, TACACS+, etc. for Security
- Comprehensive Layer 2+ Functionality with No License Required

Platform details

Switch models and configurations

Figures 1 through 3 show the FS S3900 series switches.

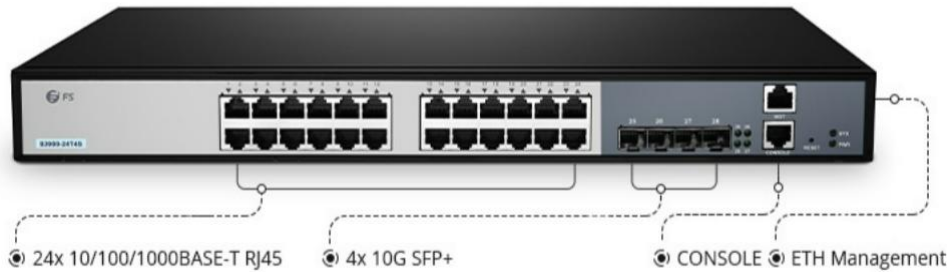


Figure 1.

S3900-24T4S, 24-Port Gigabit Ethernet L2+ Switch, 24 x Gigabit RJ45, with 4 x 10Gb SFP+ Uplinks, Stackable Switch, Broadcom Chip, Fanless

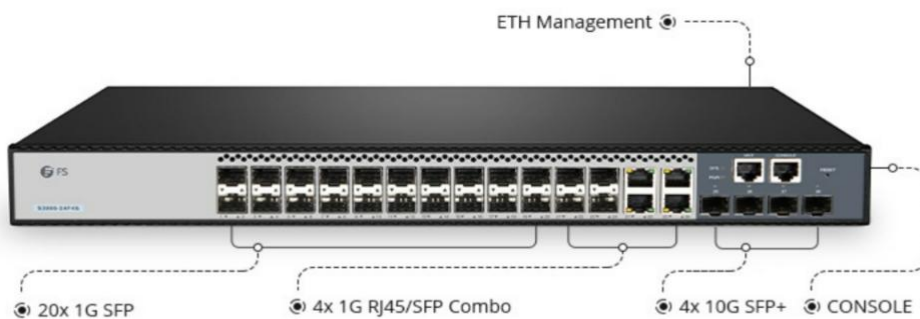


Figure 2.

S3900-24F4S, 20-Port Gigabit Ethernet L2+ Switch, 20 x 1Gb SFP, 4 x Gigabit RJ45/SFP Combo, with 4 x 10Gb SFP+ Uplinks, Stackable Switch, Broadcom Chip

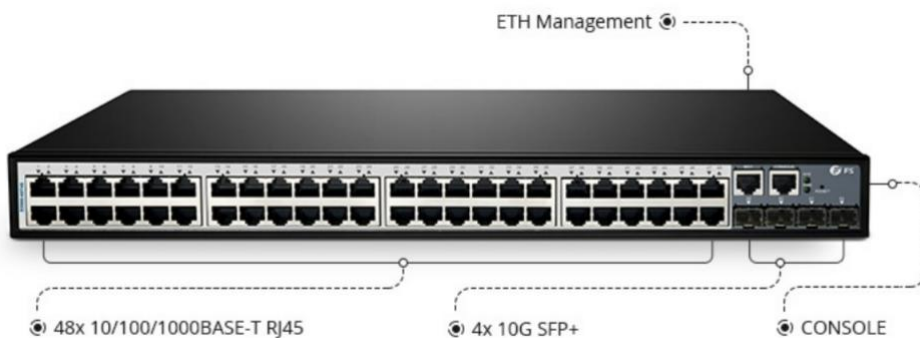


Figure 3.

S3900-48T4S, 48-Port Gigabit Ethernet L2+ Switch, 48 x Gigabit RJ45, with 4 x 10Gb SFP+ Uplinks, Stackable Switch, Broadcom Chip

Platform details

Switch models and configurations

Figures 4 through 6 show the FS 3900-R series switches.

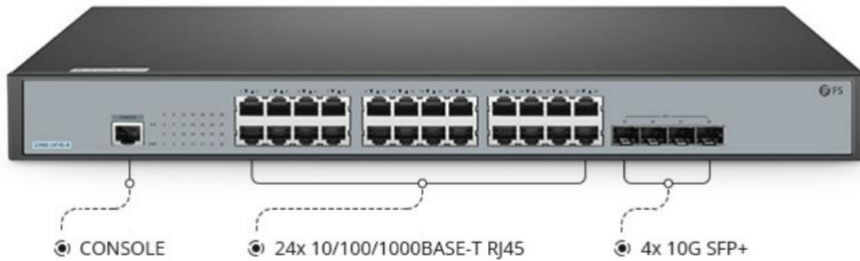


Figure 4.

S3900-24T4S-R, 24-Port Gigabit Ethernet L2+ Switch, 24 x Gigabit RJ45, with 4 x 10Gb SFP+ Uplinks, Stackable Switch, Fanless

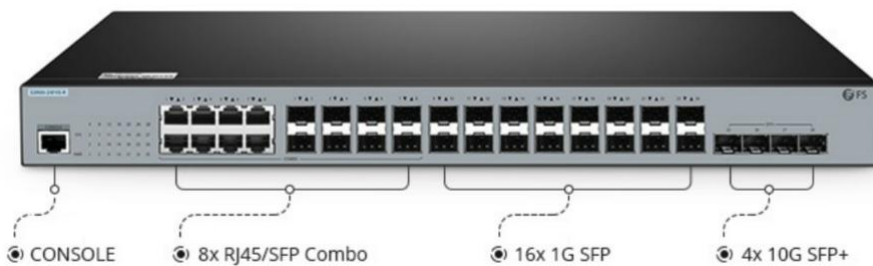


Figure 5.

S3900-24F4S-R, 16-Port Gigabit Ethernet L2+ Switch, 16x 1Gb SFP, with 8x Gigabit RJ45/SFP Combo, 4 x 10Gb SFP+ Uplinks, Stackable Switch

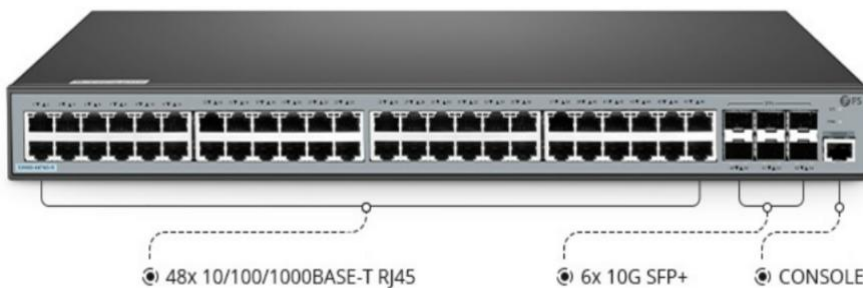


Figure 6.

S3900-48T6S-R, 48-Port Gigabit Ethernet L2+ Switch, 48 x Gigabit RJ45, with 6 x 10Gb SFP+ Uplinks, Stackable Switch

Switch configurations and port density

Table 1 shows the FS S3900 series configurations and port density.

Table 1. Switch configuration and port density of S3900 Series Switches

FS P/N	S3900-24T4S	S3900-24F4S	S3900-48T4S
Description	24-Port Gigabit Ethernet L2+ Lan Access Switch, 24 x Gigabit RJ45, with 4 x 10Gb SFP+	20-Port Gigabit Ethernet L2+ Lan Access Switch, 20 x 1Gb SFP, 4 x Gigabit RJ45/SFP Combo, with 4 x 10Gb SFP+	48-Port Gigabit Ethernet L2+ Lan Access Switch, 48 x Gigabit RJ45, with 4 x 10Gb SFP+
Port			
1G port density	28	28	52
10G port density	4	4	4
Combo Ports	-	4 (RJ45/SFP)	-
Management ports	1	1	1
Console port	1	1	1
Memory and processor			
Switch chip	BCM56150	BCM56151	BCM56150
OS	FSOS	FSOS	FSOS
RAM	128MB	128MB	128MB
DDRIII Capacity	512MB	512MB	512MB
Flash memory	64MB	64MB	64MB
Packet Buffer	1.5MB	1.5MB	1.5MB

Table 2. Switch configuration and port density of S3900–R Series Switches

FS P/N	S3900-24T4S-R	S3900-24F4S-R	S3900-48T6S-R
Description	24-Port Gigabit Ethernet L2+ Lan Access Switch, 24 x Gigabit RJ45, with 4 x 10Gb SFP+	16-Port Gigabit Ethernet L2+ Lan Access Switch, 16x 1Gb SFP, with 8x Gigabit RJ45/SFP Combo, 4 x 10Gb SFP+	48-Port Gigabit Ethernet L2+ Lan Access Switch, 48 x Gigabit RJ45, with 6 x 10Gb SFP+
Port			
10/100/1000BASE-T RJ45 port density	24	-	48
1G port density	-	16	-
Combo ports density	-	8 (RJ45/SFP)	-
10G port density	4	4	6
Console port	1	1	1
Memory and processor			
CPU	RTL9311-CG	RTL9301-CG	RTL9311-CG
OS	FSOS	FSOS	FSOS
RAM	256MB	256MB	256MB
Flash memory	16MB	16MB	16MB
Packet Buffer	1.5MB	1.5MB	1.5MB

Note:

RJ45 ports can be used as 10M/100M/1G ports for Ethernet connection. SFP ports are used for 1G connection. SFP+ ports can be used for 1/10G connection. RJ45/SFP Combo ports support one port active at a time.

Power supplies and fans

The FS S3900 Series switches ship with the dual AC power supply as default.

Table 3 through 4 provide more details on the FS S3900 series power supplies and fan specifications.

Table 3. Power supply and fan specifications of S3900 Series Switches

Description	S3900-24T4S	S3900-24F4S	S3900-48T4S
Power supply	1+1 redundant power supplies - internal	1+1 redundant power supplies - internal	1+1 redundant power supplies - internal
Fan number	Fanless	2 built-in Fans	1 built-in Fan

Description	S3900-24T4S	S3900-24F4S	S3900-48T4S
Airflow	-	Front-to-Back	Left-to-Right
Acoustic noise	0dB	52dB	54dB
Maximum fan speed	-	13000 ±10%	13000 ±10%
Max. power consumption	21W	43W	45W
Power max rating	24W	60W	60W
Input-voltage range and frequency	• Rated voltage range: 100-240VAC; 50-60Hz		
Power supply efficiency	≥75%	≥75%	≥75%
Input current	0.8A	1.5A	1.5A
Output ratings	12V	12V	12V
Power-supply input receptacles	C13	C13	C13
Power cord rating	10A	10A	10A

Table 4. Power supply and fan specifications of S3900-R Series Switches

Description	S3900-24T4S-R	S3900-24F4S-R	S3900-48T6S-R
Power supply	2 built-in power supplies	2 built-in power supplies	2 built-in power supplies
Fan number	Fanless	2 built-in fans	2 built-in Fans
Airflow	-	Left-to-Right	Left-to-Right
Acoustic noise	0dB	45dB	45dB
Maximum fan speed	6200±10%	6200±10%	6200±10%
Max. power consumption	37W	40W	42W
Power max rating	36W	36W	78W
Input-voltage range and frequency	• Rated voltage range: 100-240VAC; 50-60Hz		
Power supply efficiency	≥84%	≥84%	≥82%

Description	S3900-24T4S-R	S3900-24F4S-R	S3900-48T6S-R
Input current	1.2A	1.2A	2A
Output ratings	12V	12V	12V
Output holdup time	≥10ms	≥10ms	≥10ms
Power-supply input receptacles	C13	C13	C13
Power cord rating	250V 10A	250V 10A	250V 10A

Stacking

The FS S3900 Series switch models are designed for stacking switches as a single virtual switch, enabling customers to have a single management plane and control plane for up to 384 access ports.

Table 5 through 6 list the supported stacking options.

Table 5. Supported stacking options of S3900 Series Switches

Part Name	S3900-24T4S	S3900-24F4S	S3900-48T4S
Stacking ports	Port 27~28	Port 27~28	Port 51~52
Supported stack members	Stack with same models with the same OS version	Stack with same models with the same OS version	Stack with same models with the same OS version
Maximum number of VSL links	2	2	2
Number of members	6	6	6

Table 6. Supported stacking options of S3900-R Series Switches

Part Name	S3900-24T4S-R	S3900-24F4S-R	S3900-48T6S-R
Stacking ports	Port 25~28	Port 25~28	Port 49~54
Supported stack members	Stack with other S3900-24F4S-R with the same OS version	Stack with other S3900-24T4S-R with the same OS version	Stack with same models with the same OS version
Maximum number of VSL links	2	2	2
Number of members	8	8	6

Switch performance

Table 7 through 8 show performance specifications for the FS S3900 series switches.

Table 7. Performance specifications of S3900 Series Switches

Performance for all S3900 Series Switches	S3900-24T4S	S3900-24F4S	S3900-48T4S
Switching capacity	128 Gbps	128 Gbps	176 Gbps
Forwarding rate	95 Mpps	95 Mpps	130 Mpps
Total number of MAC addresses	16000	16000	16000
Total number of IPv4 routes (indirect routes)	128	128	128
Total number of IPv4 host routes (direct routes and ARP)	512	512	512
Total number of IPv6 routes (indirect routes)	64	64	64
Total number of IPv6 host routes (direct routes and NDP)	256	256	256
QoS ACL scale	512	512	512
Security ACL scale	512	512	512
VLAN IDs	4000	4000	4000
STP virtual ports (port* VLANs) for MST	16 instance	16 instance	16 instance
Total switched virtual interfaces (SVIs)	32	32	32
Jumbo frame	9216 bytes	9216 bytes	9216 bytes

Table 8. Performance specifications of S3900-R Series Switches

Performance for all S3900 Series Switches	S3900-24T4S-R	S3900-24F4S-R	S3900-48T6S-R
Switching capacity	128 Gbps	128 Gbps	216 Gbps
Forwarding rate	96 Mpps	96 Mpps	162 Mpps
Total number of MAC addresses	16000	16000	16000
Total number of IPv4 routes (indirect routes)	502	502	502
Total number of IPv4 host routes (direct routes and ARP)	2040	2036	512
Total number of IPv6 routes (indirect routes)	132	129	152
Total number of IPv6 host routes (direct routes and NDP)	1000	2040	152
Total number of IPv4 multicast routes	1024	1024	1024
Total number of IPv6 multicast routes	1024	1024	1024
QoS ACL scale	1407	1150	2174
Security ACL scale	1407	1150	2174
VLAN IDs	4000	4000	4000
STP virtual ports (port* VLANs) for MST	28	28	54
Total switched virtual interfaces (SVIs)	63	63	63
Jumbo frame	9216 bytes	9216 bytes	9216 bytes

Platform benefits

Table 9 lists the software spotlights for the FS S3900 series switches.

Table 9. Software spotlights

Functionality	Description
VLAN	Support 4K Active VLAN Support GVRP Support Voice VLAN
Virtual stacking for simplified management	up to 6 units stacking (Only for S3900 Series) up to 8 units stacking (Only for S3900-R Series) Simplified network management Fault recovery within milliseconds All 10G ports support stacking
Sound security protection policies	Support Local/Radius Authentication Support Port-based Authentication Support Mac-based Authentication HTTPS and SSL (v3) Support DHCP snooping Support IP Source guard Support DoS Protection
High reliability and energy efficiency	Support IEEE 802.1D Spanning Tree Protocols (STPs) Support IEEE 802.1w Rapid Spanning Tree Protocol (RSTP) Support IEEE 802.1s Multiple Spanning Tree Protocol (MSTP) Support BPDU Guard/filtering/transparent Support Root Guard Support Loopback Detection Hardware architecture to reduce energy consumption and noise Variable-speed axial fans to intelligently control the fan speed
Perfect compatibility performance	Support the spanning tree protocols (STPs) Support virtual router redundancy protocol (VRRP) Support rapid link detection protocol (RLDP) Support rapid Ethernet uplink protection protocol (REUP) Support bidirectional forwarding detection (BFD)
Perfect compatibility performance	Support IEEE802.3 standard protocols, enabling good interoperability with other brands of equipment at the forwarding level Compatible with standard protocols such as STP/RSTP/MSTP/SNMP/DHCP/NTP of other equipment based on public agreement Compatible with market main stream AP/camera/IP phone/optical module
Easy network maintenance	Support SNMP (Managed by Zabbix), RMON, HTTP, log Support Syslog, Web-based management, Telnet, SSH CLI style is similar to Cisco, easy to learn
IPv4/IPv6 dual-stack multi-layer switching	Support line-rate IPv4/IPv6 dual-stack multi-layer switching Support static routing
Access Control Lists (ACLs)	Robust L2/L3/L4 feature Support traffic statistics Support Global ACL Support IPv4/IPv6/MAC/ARP ACL
Varied Service Support Capability	Support IGMP snooping Support IPv6 Neighbor Discovery Support IPv6 DHCP Snooping

Software requirements

The FS S3900 Series Switches run on FS OS Software version.

Table 10 lists the latest software requirements for the switch models.

Table 10. Latest software requirements

FS P/N	Description	Latest software requirements
S3900-24T4S	S3900-24T4S, 24-Port Gigabit Ethernet L2+ Switch, 24 x Gigabit RJ45, with 4 x 10Gb SFP+ Uplinks, Stackable Switch, Broadcom Chip, Fanless	FSOS MR V0173 Software
S3900-24F4S	S3900-24F4S, 20-Port Gigabit Ethernet L2+ Switch, 20 x 1Gb SFP, 4 x Gigabit RJ45/SFP Combo, with 4 x 10Gb SFP+ Uplinks, Stackable Switch, Broadcom Chip	FSOS MR V0174 Software
S3900-48T4S	S3900-48T4S, 48-Port Gigabit Ethernet L2+ Switch, 48 x Gigabit RJ45, with 4 x 10Gb SFP+ Uplinks, Stackable Switch, Broadcom Chip	FSOS MR V0173 Software
S3900-24T4S-R	S3900-24T4S-R, 24-Port Gigabit Ethernet L2+ Switch, 24 x Gigabit RJ45, with 4 x 10Gb SFP+ Uplinks, Stackable Switch, Fanless	FSOS 2.2.0E 99013 Software
S3900-24F4S-R	S3900-24F4S-R, 16-Port Gigabit Ethernet L2+ Switch, 16x 1Gb SFP, with 8x Gigabit RJ45/SFP Combo, 4 x 10Gb SFP+ Uplinks, Stackable Switch	FSOS 2.2.0E 99013 Software
S3900-48T6S-R	S3900-48T6S-R, 48-Port Gigabit Ethernet L2+ Switch, 48 x Gigabit RJ45, with 6 x 10Gb SFP+ Uplinks, Stackable Switch	FSOS 2.2.0E 99729 Software

Product specifications

Table 11. Product specifications of S3900 Series Switches

Table 11 through 12 show the product specifications for the FS S3900 series switches.

Description	S3900-24T4S	S3900-24F4S	S3900-48T4S
Environmental			
Operating temperature	32° F to 122° F (0°C to 50°C)	32° F to 113° F (0°C to 45°C)	32° F to 113° F (0°C to 45°C)
Storage temperature	-40° F to 158° F (-40°C to 70°C)	-40° F to 158° F (-40°C to 70°C)	-40° F to 158° F (-40°C to 70°C)
Operating humidity	5% to 90% (Non-condensing)	5% to 90% (Non-condensing)	5% to 90% (Non-condensing)
Storage humidity	10% to 90% (Non-condensing)	10% to 90% (Non-condensing)	10% to 90% (Non-condensing)
Temperature alarm	Not Supported	Not Supported	Not Supported
Acoustic noise	0dB	52dB	54dB

Description	S3900-24T4S	S3900-24F4S	S3900-48T4S
Physical specifications			
Dimensions (HxWxD)	1.73"x17.32"x11.02" (44x440x280mm)	1.73"x17.32"x11.02" (44x440x280mm)	1.73"x17.32"x12.99" (44x440x330mm)
Rack units (RU)	1U	1U	1U
Weight	8.76 lbs (3.975kg)	9.41 lbs (4.27kg)	10.8 lbs (4.9kg)
Distance	100M	100M	100M
Electrical			
Voltage (auto ranging)	100-240VAC	100-240VAC	100-240VAC
Frequency	50-60Hz	50-60Hz	50-60Hz
Current	0.8A Max	1.5A Max	1.5A Max
Power rating (maximum consumption)	24W	60W	60W
Mean-time between failures			
MTBF (hours)	>100000	>100000	>100000
Connectors			
Connectors and cabling	<ul style="list-style-type: none"> • 1/10GBASE-T ports: RJ-45 connectors, 4-pair Cat5E/Cat6/Cat6a UTP cabling • SFP transceivers: LC fiber connectors (single-mode or multimode fiber) • SFP+ transceivers: LC fiber connectors (single-mode or multimode fiber) • FS StackWise stacking ports: copper-based FS StackWise cabling • Ethernet management port: RJ-45 connectors, 4-pair Cat5 UTP cabling • Management console port: RJ-45-to-DB9 cable for PC connections 		
Power connectors	<ul style="list-style-type: none"> • Customers can provide power to a switch by using the internal power at the back of the switch • Internal power supply connector: The internal power supply is an auto-ranging unit. It supports input voltages between 100 (115 for 1100WAC) and 240 VAC. Use the supplied AC power cord to connect the AC power connector to an AC power outlet 		

Description	S3900-24T4S	S3900-24F4S	S3900-48T4S
Standards			
Standards	802.1x, AAA, RMON, SNMPV1 V2 V3, HTTP Telnet, SSH		

Table 12. Product specifications of S3900-R Series Switches

Description	S3900-24T4S-R	S3900-24F4S-R	S3900-48T6S-R
Environmental			
Operating temperature	-4° F to 149° F (-20°C to 65°C)	-4° F to 149° F (-20°C to 65°C)	-4° F to 149° F (-20°C to 65°C)
Storage temperature	-4° F to 158° F (-20°C to 70°C)	-4° F to 158° F (-20°C to 70°C)	-4° F to 158° F (-20°C to 70°C)
Operating humidity	10% to 90% (Non-condensing)	10% to 90% (Non-condensing)	10% to 90% (Non-condensing)
Storage humidity	5% to 95% (Non-condensing)	5% to 95% (Non-condensing)	5% to 95% (Non-condensing)
Temperature alarm	Supported	Supported	Supported
Acoustic noise	0dB	45dB	45dB
Dimensions (HxWxD)	1.73"x17.32"x7.09" (44x440x180mm)	1.73"x17.32"x11.02" (44x440x280mm)	1.73"x17.32"x11.02" (44x440x280mm)
Rack units (RU)	1U	1U	1U
Power rating (maximum consumption)	36W	36W	78W
Electrical			
Voltage (auto ranging)	100-240VAC	100-240VAC	100-240VAC
Frequency	50-60Hz	50-60Hz	50-60Hz
Current	1.2A	1.2A	2A

Description	S3900-24T4S-R	S3900-24F4S-R	S3900-48T6S-R
-------------	---------------	---------------	---------------

Mean-time between failures

MTBF (hours)	>50,000	>50,000	>50,000
--------------	---------	---------	---------

Connectors

Connectors and cabling	<ul style="list-style-type: none"> • 1/10GBASE-T ports: RJ-45 connectors, 4-pair Cat5E/Cat6/Cat6a UTP cabling • SFP transceivers: LC fiber connectors (single-mode or multimode fiber) • SFP+ transceivers: LC fiber connectors (single-mode or multimode fiber) • FS StackWise stacking ports: copper-based FS StackWise cabling • Ethernet management port: RJ-45 connectors, 4-pair Cat5 UTP cabling • Management console port: RJ-45-to-DB9 cable for PC connections
	<ul style="list-style-type: none"> • Customers can provide power to a switch by using the internal power at the back of the switch • Internal power supply connector: The internal power supply is an auto-ranging unit. It supports input voltages between 100 (115 for 1100WAC) and 240 VAC. Use the supplied AC power cord to connect the AC power connector to an AC power outlet
Standards	

Standards	802.1x, AAA, RMON, SNMPV1 V2 V3, HTTP Telnet, SSH
-----------	---

Quality certification

At FS, our Quality Commitment lies in all aspects of processes, resources, and methods that enable us to build superior networks for our customers. Through a quality policy focusing on continuous improvement of products and services, we're able to achieve the highest levels of satisfaction for our customers. To that end, every FS employee is accountable for contributing to the value of the products and services we deliver.

Figure 4 shows some of the authoritative certifications obtained by FS S3900 Series Switches.



Figure 7.

Optics supported

For details about the optical modules available, visit:

S3900-24T4S/S3900-24F4S/S3900-48T4S: [Transceivers DACs and AOCs Supported on S3900 Series Switches](#)

Warranty, service and support

FS S3900 Series Switches enjoy 4 years limited warranty against defects in materials or workmanship. For more information for FS Returns & Refunds policy, visit <https://www.fs.com/policies/warranty.html> or https://www.fs.com/policies/day_return_policy.html

FS provides a personal account manager, free professional technical support, and 24/7 live customer service to each customer.

- Professional Lab: Test each product with the latest and advanced networking equipment.
- Free Technical Support: Provide free & tailored solutions and services for your businesses.
- 80% Same-day Shipping: Immediate shipping for in-stock items.
- Fast Response: Direct and immediate assistance from an expert.

For more information, visit https://www.fs.com/service/fs_support.html

Ordering information

Table 13 provides the ordering information for S3900 series switches.

Table 13. Ordering information

FS P/N	Product description
Switch hardware	
S3900-24T4S	S3900-24T4S, 24-Port Gigabit Ethernet L2+ Switch, 24 x Gigabit RJ45, with 4 x 10Gb SFP+ Uplinks, Stackable Switch, Broadcom Chip, Fanless
S3900-24F4S	S3900-24F4S, 20-Port Gigabit Ethernet L2+ Switch, 20 x 1Gb SFP, 4 x Gigabit RJ45/SFP Combo, with 4 x 10Gb SFP+ Uplinks, Stackable Switch, Broadcom Chip
S3900-48T4S	S3900-48T4S, 48-Port Gigabit Ethernet L2+ Switch, 48 x Gigabit RJ45, with 4 x 10Gb SFP+ Uplinks, Stackable Switch, Broadcom Chip
S3900-24T4S-R	S3900-24T4S-R, 24-Port Gigabit Ethernet L2+ Switch, 24 x Gigabit RJ45, with 4 x 10Gb SFP+ Uplinks, Stackable Switch, Fanless
S3900-24F4S-R	S3900-24F4S-R, 16-Port Gigabit Ethernet L2+ Switch, 16x 1Gb SFP, with 8x Gigabit RJ45/SFP Combo, 4 x 10Gb SFP+ Uplinks, Stackable Switch
S3900-48T6S-R	S3900-48T6S-R, 48-Port Gigabit Ethernet L2+ Switch, 48 x Gigabit RJ45, with 6 x 10Gb SFP+ Uplinks, Stackable Switch

Additional information

For more information about the S3900 Series Switches, contact your account manager or visit https://www.fs.com/search_result?keyword=S3900

Document history

New or revised topic	Described in	Date
Updates to FS S3900 Series Switches Data Sheet	Updated all	11/11/2022



Shenzhen (China)

Address: 24F, Yingfeng Center, Haitian 2nd Rd,
Nanshan District, Shenzhen
Tel: +86 (755) 8357 1351
Email: sales@feisu.com

Delaware (United States)

Address: 380 Centerpoint Blvd, New Castle,
DE 19720, United States
Tel: +1 (888) 468 7419
Email: us@fs.com

Munich (Germany)

Address: NOVA Gewerbepark Building 7, Am
Gfild 7,85375 Neufahrn bei Munich, Germany
Tel: +49 (0) 8165 4099 260
Email: de@fs.com

Singapore

Address: 30A Kallang Pl, #11-10/11/12 Singapore
339213
Tel: +65 6443 7951
Email: sg@fs.com

Wuhan (China)

Address: 9-14F, Optical Valley Software Park
A7, Guanshan Ave, Wuhan
Tel: +86 (027) 8808 9195
Email: sales@feisu.com

Birmingham (United Kingdom)


Address: Regus Edmund House, 12-22 Newhall
Street, Birmingham, B3 3AS
Tel: +49 (0) 8165 4099 260
Email: uk@fs.com

Melbourne (Australia)

Address: 57-59 Edison Rd, Dandenong South,
VIC 3175, Australia
Tel: +61 3 9693 3488
Email: au@fs.com

Tokyo (Japan)

Address: JS Progress Building, 4-1-23 Heiwajima,
Ota-ku, Tokyo 〒143-0006
Tel: 03-5826-8305
Email: jp@fs.com



FS has several offices around the world. Addresses, phone numbers are listed on the FS Website at https://www.fs.com/contact_us.html
FS and FS logo are trademarks or registered trademarks of FS in the U.S. and other countries.