

Office sublease opportunity

6880 N Frontage Road, Suite 400, Burr Ridge, IL 60527



Property highlights

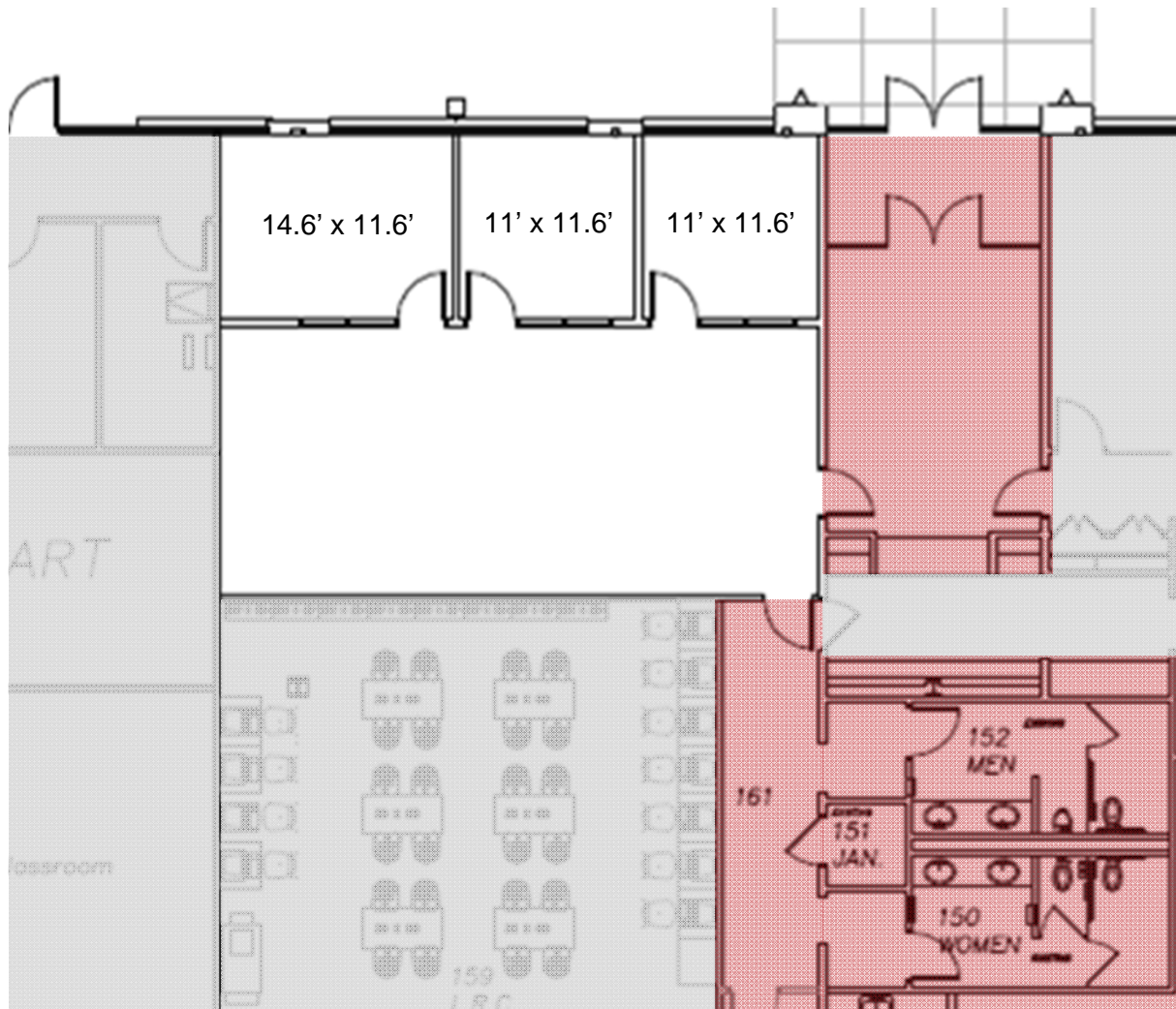
- Corporate office
- Suite 400: 1,264 SF
- Flexible term through 6/30/2020
- Shared lobby area with double door entry
- 4:1,000 Parking



For more information:

Sean Reynolds
Managing Director
+1 312 228 3091

Sean.Reynolds@am.jll.com



COMMON AREA

NOT A PART



For more information:

Sean Reynolds
 Managing Director
 +1 312 228 3091

Sean.Reynolds@am.jll.com