

DOMINION BUREAU
OF STATISTICS
AUG 19 1933
PROPERTY OF THE
LIBRARY.

CANADA
DEPARTMENT OF TRADE AND COMMERCE
DOMINION BUREAU OF STATISTICS
AGRICULTURAL BRANCH

Vol. 45
14

No. 2

Historical File Copy

CANADIAN GRAIN STATISTICS

Week ending

AUGUST 11, 1933

(Records for Western Inspection Division supplied by Board of Grain Commissioners for Canada.)

Published by Authority of the Hon. H. H. Stevens, M.P.,

Minister of Trade and Commerce.

OTTAWA

1933

I N D E X

General Summary	1 - 6a
Canadian Grain in Store by Elevators	7
Canadian Grain in Store by Grades	8
Comparative Statement of Grain in Store	9
Receipts and Shipments of Canadian Grain	10
U. S. Grain in Store, Receipts and Shipments	11
Receipts, Shipments and Quantities in Store at Country Elevators Western Division	12
Receipts, Shipments and Quantities in Store at Interior Terminal Elevators	13
Receipts, Shipments and Quantities in Store at Pacific Elevators, and Vancouver Prices	14
Daily and Weekly Average Prices of Grain at Fort William and Toronto, and for the week ending August 12, 1933	15
Receipts and Shipments of Canadian Grain at Country Elevators, and Platform Loadings also at Interior, Vancouver - New Westminster ,.. Victoria, Prince Rupert and Churchill Elevators, Month of July, 1933	16-17-18-19
Exports of Grain by Shipping Routes, July, 1933	20 - 21
Exports of Grain by Canadian Ports of Exit, July, 1933	22
Exports of Grain by Canadian Inland Ports and Flaxseed, by Ports of Exit, July, 1933	23
Exports of Bran, and Oatmeal and Rolled Oats by Canadian Ports of Exit, July, 1933	24
Inspections Western Division, month of July, 1933	25-26-27
Stocks of grain in Canada at the end of the crop year July 31, 1933	28
Exports of grain, wheatflour, and millfeed by countries of destination, July, 1933	29 - 30

DEPARTMENT OF TRADE AND COMMERCE
DOMINION BUREAU OF STATISTICS - CANADA
AGRICULTURAL BRANCH

(Issued August 18, 1933)

Dominion Statistician:	R. H. Coats, B.A., F.S.S.(Hon.), F.R.S.C.
Chief, Agricultural Branch:	T. W. Grindley, Ph.D.
Assistant Chief, Agricultural Branch:	W. Dougan.

WHEAT STOCKS IN STORE

Wheat in store for the week ending August 11, 1933 shows a decrease of 1,149,369 bushels as compared with the previous week. The Canadian visible supply was reported at 195,031,023 bushels compared with the revised figure of 196,180,392 bushels of the previous week and 115,967 bushels for the corresponding week last year.

Canadian wheat in store in the United States amounted to 5,700,111 bushels compared with 6,029,483 bushels on the same date last year.

In transit wheat on the Great Lakes amounted to 3,460,335 bushels on August 11, 1933. On August 12, 1932 5,174,965 bushels were in transit on the lakes.

United States wheat in Canada was shown as 3,711,190 bushels compared with 14,669,001 bushels last year.

PRIMARY MOVEMENT

Wheat marketings in the Prairie Provinces for the week ending August 4, amounted to 394,491 bushels a decrease of 1,036,725 bushels compared with those of the previous week when 1,431,216 bushels were marketed. During the same week in 1932, 520,486 bushels were reported.

EXPORT CLEARANCES OF WHEAT

During the week ending August 11, 1933, the export clearances of wheat amounted to 2,048,153 bushels compared with 2,887,958 bushels for the previous week, a decrease of 479,805 bushels. For the corresponding week in 1932, 3,832,623 bushels were reported.

Clearances by ports for the week ending August 11, 1933, and August 12, 1932, were as follows (in bushels):-

	<u>Week ending</u> <u>August 11, 1933</u>	<u>Week ending</u> <u>August 12, 1932</u>
Montreal	1,773,227	1,905,534
Vancouver and New Westminster	244,733	1,131,319
Sorel	231,193	228,800
Quebec	-	79,970
United States Atlantic Seaboard Ports	159,000	487,000
TOTALS	2,408,153	3,832,623

The following table shows export clearances of Canadian wheat, by ports, since commencement of the present crop year along with comparative figures for the same period in 1932-33 (in bushels):-

	<u>1933-34</u>	<u>1932-33</u>
Montreal	3,092,535	3,122,251
Vancouver	623,706	1,676,196
United States Ports	571,000	1,068,000
Churchill	-	-
Sorel	704,370	228,800
Quebec	304,500	79,970
Victoria	-	-
Prince Rupert	-	-
West Saint John and Saint John	-	-
Halifax	-	-
TOTALS	5,296,111	6,175,217

THE WORLD SITUATION

The following table shows world shipments of wheat and wheat flour for the first two weeks of the present crop year. (Broomhall's figures)

Week Ending	North America	Argentine	Australia	Russia	Other	Total
(Thousand bushels)						
August 7	4,204	1,916	2,782	-	80	8,982
August 14	3,276	4,860	624	-	128	8,888
TOTAL	7,480	6,776	3,406	-	208	17,870
<u>Comparative 1932-33</u>						
Corresponding week	4,880	672	1,104	-	624	7,280
Total to date	9,352	1,128	3,432	-	1,144	15,056

During the week ending August 14, world shipments amounted to 8,888,000 bushels compared with 8,982,000 bushels for the previous week and 7,280,000 bushels for the corresponding week last year.

The Argentine cleared nearly five million bushels during the past week while shipments from North America declined by about one million bushels.

During the first two weeks of the present crop year world shipments have amounted to 17,870,000 bushels compared with 15,056,000 bushels for the same weeks in 1932-33. During the past two weeks North American shipments were lower than for the corresponding weeks last year.

THE ARGENTINE

The Dominion Bureau of Statistics has received the following cable from the International Institute of Agriculture at Rome.-

"Argentine area sown this season as follows:- wheat 18,286,000 acres; rye 1,656,000 acres; barley 1,680,000 acres, oats 3,460,000 acres, linseed 6,919,000 acres."

In 1932 it was estimated that 19,241,000 acres were sown to wheat and consequently the preliminary figures for 1933 indicate a reduction of about 1 million acres sown to wheat this year as compared with last year.

UNITED KINGDOM

The Canadian Trade Commissioner in London advises by cable that the wheat crop of the United Kingdom is estimated at 57 million bushels compared with 45 million bushels in 1932.

On August 15, port stocks of wheat and wheat flour in the United Kingdom amounted to 9.3 million bushels compared with 11.1 million bushels in August 1, 1933.

PORTUGAL

The Canadian Trade Commissioner for Italy advises that the surplus from the 1932 crop and 1933 production in Portugal will be about sufficient for the present cereal year. The quantity of the new crop is stated to be poor.

GERMANY

The Dominion Bureau of Statistics is in receipt of a cable from the International Institute of Agriculture giving the following estimates of 1933 production in Germany:-

Wheat	192 million bushels;	last year,	184 million bushels.
Rye	332 " "	" "	327 " "
Barley	152 " "	" "	148 " "
Oats	427 " "	" "	458 " "

... ..

... ..

... ..

... ..

... ..

... ..

... ..

... ..

CHAPTER 10

... ..

... ..

... ..

CHAPTER 11

... ..

... ..

... ..

... ..

... ..

... ..

... ..

... ..

... ..

... ..

CANADIAN GRAIN STATISTICS - WEEK ENDING AUGUST 11, 1933

Returns received as to stocks of grain in store for the week ending August 11, 1933, show a decrease of 962,428 bushels compared with the revised total of the previous week. Stocks in store were as follows:- wheat 195,031,023, oats 12,601,032, barley 8,042,500 flaxseed 1,095,410 and rye 5,702,392 bushels a total of 222,472,357 bushels. Decreases are noted in wheat of 1,149,369, oats 88,542 and flaxseed 15,281 bushels, while increases are shown in barley of 223,695 and rye 67,069 bushels. For the corresponding week last year stocks in store were as follows:- wheat 115,967,110, oats 5,805,487, barley 2,935,658 flaxseed 1,249,031 and rye 4,765,072 bushels a total of 130,722,358 bushels.

WESTERN COUNTRY ELEVATORS.- Stocks of grain in store increased 212,573 bushels. Increases are noted in wheat of 173,965, barley 48,021, flaxseed 1,521 and rye 20,416 bushels while oats decreased 31,350 bushels.

The following table shows the quantities of grain in store at the Country Elevators in each of the Prairie Provinces on August 4, 1933 with comparison for the previous week and the same period 1932.

	<u>MANITOBA</u>	<u>SASKATCHEWAN</u>	<u>ALBERTA</u>	<u>TOTAL</u>
	<u>B U S H E L S</u>			
Wheat	4,106,165	37,658,537	30,197,711	71,962,413
Oats	296,341	1,449,664	3,404,850	5,150,855
Barley	629,094	719,363	856,927	2,205,384
Flaxseed	15,418	116,338	26,869	158,625
Rye	65,981	626,389	211,928	904,298
T O T A L S	5,112,999	40,570,291	34,698,285	80,381,575
Previous week	5,519,870	40,805,033	34,346,792	80,671,695
Same period 1932	1,692,239	13,411,537	11,803,600	26,907,376

The receipts and shipments at the Country Elevators for the week ending August 4, 1933 compared with the previous week and the same period 1932 were as follows:-

	<u>R E C E I P T S</u>			<u>S H I P M E N T S</u>		
	Previous week	Week ending Aug. 4, 1933	Week ending Aug. 5, 1932	Previous week	Week ending Aug. 4, 1933	Week ending Aug. 5, 1932
Wheat	1,431,216	394,491	494,831	2,663,219	1,003,569	956,276
Oats	407,494	119,111	138,518	374,411	95,019	50,125
Barley	158,143	59,898	51,121	268,893	80,767	20,182
Flaxseed	880	782	4,451	18,751	4,417	4,201
Rye	73,808	34,482	23,145	117,377	2,668	6,167
TOTALS	2,071,541	608,764	712,066	3,442,651	1,193,440	1,036,951

Platform Loadings shown by Prairie Provinces for the period ending July 31, 1933 were as follows:-

	<u>WHEAT</u>	<u>OTHER GRAIN</u>	<u>TOTAL</u>
	<u>B U S H E L S</u>		
Manitoba	72,232	38,509	110,741
Saskatchewan	39,276	19,836	59,112
Alberta	79,202	43,072	122,274
T O T A L S	190,710	101,417	292,127
Period ending 1932	14,676	35,656	50,332
↑Increase -Decrease	↑176,034	↑65,761	↑241,795

INTERIOR PUBLIC AND SEMI-PUBLIC TERMINALS.- Stocks for the week show an increase of 16,441 bushels made up of wheat 15,140 and barley 1,301 bushels.

VANCOUVER AND NEW WESTMINSTER ELEVATORS.- Grain stocks at these elevators show a net increase of 179,477 bushels made up as follows:- wheat 141,579, oats 13,793 and barley 24,105 bushels.

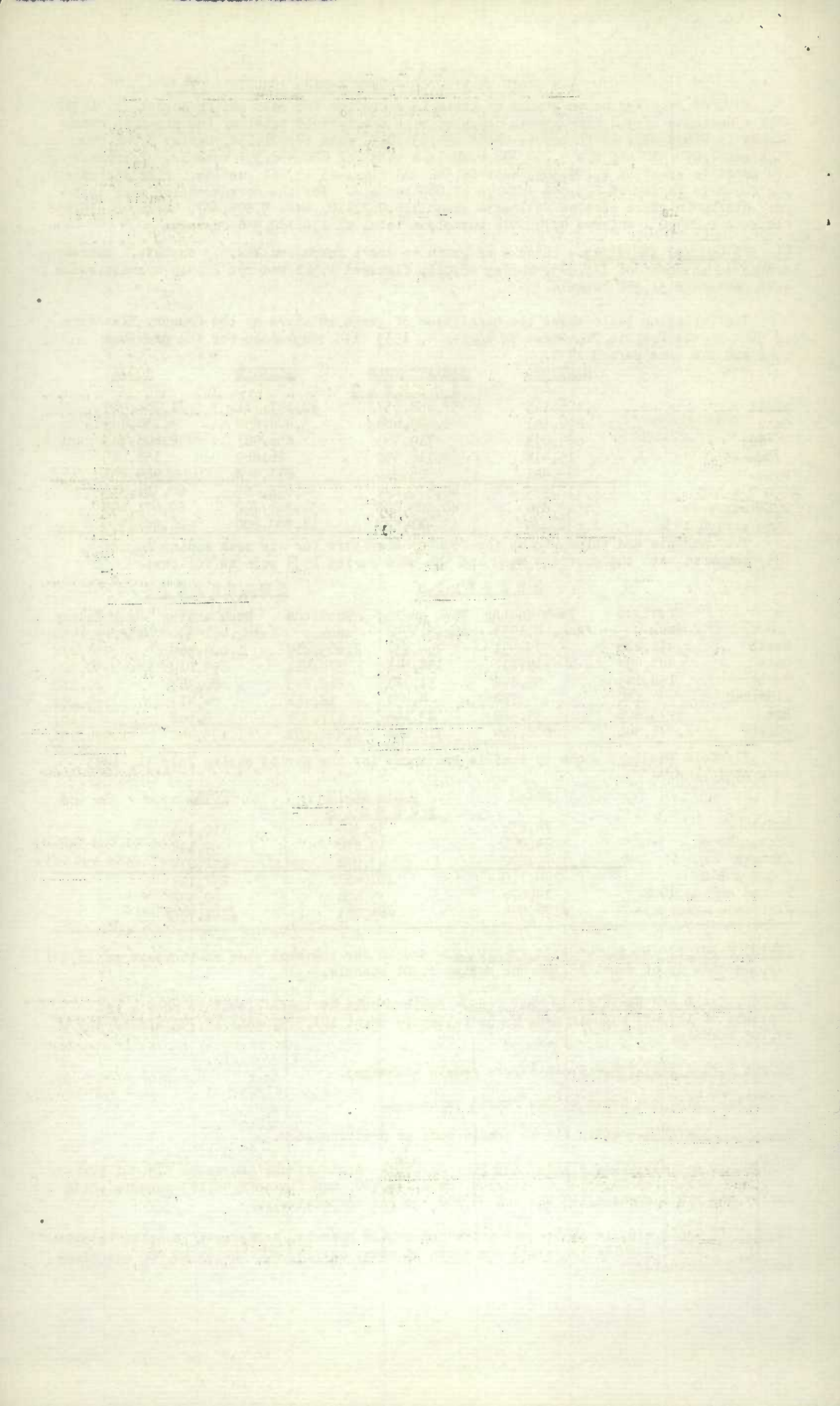
PRINCE RUPERT ELEVATOR.- Grain stocks remain unchanged.

VICTORIA ELEVATOR.- Grain stocks remain unchanged.

CHURCHILL ELEVATOR.- Grain stocks remain same as previous week.

PUBLIC AND PRIVATE (FORT WILLIAM AND PORT ARTHUR).- Grain stocks decreased 579,901 bushels. Decreases are noted in wheat of 573,924, oats 143,980, and flaxseed 40,123 bushels while barley and rye increased 119,024 and 59,102 bushels respectively.

IN TRANSIT LAKES.- Grain in transit decreased 44,800 bushels, a decrease is noted in oats of 815,245 bushels while increases are shown in wheat of 724,060, barley 40,000 and flaxseed 6,335 bushels.



Stocks in Store at the Head of the Lakes compared with the same week last year were as follows:-

	Week ending August 11, 1933	Week ending August 12, 1932	± Increase -- Decrease
Wheat	61,253,006	42,577,772	+ 18,675,234
Oats	2,723,751	2,074,681	+ 649,070
Barley	2,950,490	678,092	+ 2,272,398
Flaxseed	760,836	1,033,226	- 292,390
Rye	3,414,202	2,542,807	+ 871,395
T O T A L S	71,102,285	48,926,578	+ 22,175,707

The receipts (including transfers) at the Head of the Lakes for the period ending August 11, 1933 with comparative figures for the same week last year were as follows:-

	Week ending August 11, 1933	Week ending August 12, 1932	± Increase -- Decrease
Wheat	2,053,961	859,541	+ 1,194,420
Oats	219,659	115,749	+ 103,910
Barley	150,312	43,212	+ 117,100
Flaxseed	16,425	10,003	+ 6,422
Rye	59,102	55,915	+ 3,187
T O T A L S	2,509,459	1,034,420	+ 1,425,039

Preliminary figures showing receipts and shipments at the Head of the Lakes also Vancouver, New Westminster, Victoria, Churchill and Prince Rupert for the period August 1, 1933 to August 11, 1933 compared with the same period last year.

	FORT WILLIAM & PORT ARTHUR		VANCOUVER-NEW WESTMINSTER	
	Receipts	Shipments	Receipts	Shipments
Wheat	2,451,709	2,474,857	658,231	623,706
Oats	347,659	794,585	43,998	23,610
Barley	235,326	95,000	37,555	-
Flaxseed	51,589	54,886	428	428
Rye	107,367	-	2,478	-
T O T A L S	3,173,650	3,419,328	742,690	647,744
Same period last year	1,939,896	8,438,724	842,391	1,753,514
Increase -Decrease	+1,233,754	-5,019,386	-99,701	-1,105,770

T O T A L S	PRINCE RUPERT		VICTORIA	
	Receipts	Shipments	Receipts	Shipments
Same period last year	Nil	Nil	Nil	Nil

T O T A L S	CHURCHILL	
	Receipts	Shipments
Same period last year	Nil	Nil

INTERIOR PRIVATE AND MILL ELEVATORS.- Grain stocks for the week show a net increase of 6,193 bushels. Increases are noted in oats of 64,721, barley 8,226, flaxseed 2,344 and rye 122 bushels while wheat decreased 69,220 bushels.

Stocks in store at the Country, Public and Private Elevators at the Head of the Lakes, Prince Rupert, Vancouver & New Westminster, Victoria, Churchill, Interior Private and Mill compared with the same week last year were as follows:-

	Week ending August 11, 1933	Week ending August 12, 1932	± Increase -- Decrease
Wheat	152,969,650	86,445,827	+ 66,523,823
Oats	9,705,118	3,959,457	+ 5,745,661
Barley	7,082,684	2,164,721	+ 4,917,963
Flaxseed	987,249	1,230,422	- 243,173
Rye	4,452,000	3,102,153	+ 1,349,847
T O T A L S	175,196,701	96,902,580	+ 78,294,121

EASTERN ELEVATORS-LAKE PORTS.- Grain stocks for the week show a net increase of 131,352 bushels, Oats and barley increased 790,433 and 23,603 bushels respectively while decreases are noted in wheat of 643,684, flaxseed 34,615 and rye 4,385 bushels.

EASTERN ELEVATORS-SEABOARD PORTS (CANADIAN GRAIN).- Grain stocks for the week show a net decrease of 168,733 bushels. Decreases are noted in wheat of 201,869 and rye 8,572 bushels while increases are shown in oats of 33,086 and barley 8,622 bushels.

The receipts of the above by classes of ports were as follows:-

	W H E A T		TOTAL GRAIN	
	Vessel	Rail	Vessel	Rail
Georgian Bay Ports	728,060	-	1,331,004	-
Lower Lake Ports	751,462	1,991	1,056,970	4,377
St. Lawrence Ports	1,614,642	-	1,651,562	3,746
Seaboard Ports	276,091	-	360,140	-
T O T A L S	3,370,255	1,991	4,399,676	8,123

Shipments overseas of Canadian grain from St. Lawrence ports were as follows:-

		<u>U. K.</u>	<u>O. C.</u>
Montreal, Quebec.	Wheat	-	1,773,227
	Oats	-	12,011
	Barley	-	16,705
	Rye	-	8,571
Sorel, Que.	Wheat	231,193	-

EASTERN ELEVATORS.- United States grain stocks were 3,536,296 bushels lower than at a comparable date last year. Decreases are noted in wheat of 10,957,811, barley 1,250 and rye 119,952 bushels while oats and corn increased 594,614 and 6,948,103 bushels.

The quantities by classes of ports with increases and decreases.-

	Week ending August 11, 1933	Week ending August 12, 1932	+ Increase - Decrease
At Georgian Bay Ports	8,736,949	10,073,502	- 1,336,553
At Lower Lake Ports	1,130,191	2,083,958	- 953,767
At St. Lawrence Ports	2,321,829	3,391,399	- 1,069,570
At Seaboard Ports	-	176,406	- 176,406
T O T A L S	12,188,969	15,725,265	- 3,536,296

Shipments overseas of U. S. Grain from St. Lawrence ports were as follows:-

<u>U. K.</u>	<u>O. C.</u>
Nil	

U. S. LAKE PORTS.- Wheat stocks decreased 567,802 bushels.

U. S. ATLANTIC SEABOARD PORTS.- Grain stocks decreased 147,228 bushels. Wheat decreased 147,614 bushels while rye increased 386 bushels.

Inspections returns for the week ending August 7, 1933, with comparison for the previous year were as follows.-

	Week ending August 7, 1933	Week ending August 7, 1932	+ Increase - Decrease
Wheat	1,856	1,101	+ 755
Oats	133	65	+ 68
Barley	165	45	+ 120
Flaxseed	19	9	+ 10
Rye	51	46	+ 5
Mixed grain	4	5	- 1
T O T A L S	2,228	1,271	+ 957

The number of bushels of grain shipped from western to the Canadian eastern points, over the C.P.R. and C.N.R. for the week ending July 31, 1933, and the period from August 1, 1932 to July 31, 1933.

	<u>WEEK ENDING JULY 31, 1933.</u>					<u>PERIOD AUGUST 1, 1932 to JULY 31, 1933</u>				
	<u>WHEAT</u>	<u>OATS</u>	<u>BARLEY</u>	<u>FLAXSEED</u>	<u>RYE</u>	<u>WHEAT</u>	<u>OATS</u>	<u>BARLEY</u>	<u>FLAXSEED</u>	<u>RYE</u>
Via C.P.R.	-	-	-	-	-	2,098	44,242	-	-	-
Via C.N.R.	1,470	14,784	-	-	-	10,361	487,128	3,001	-	-
TOTAL	1,470	14,784	-	-	-	12,459	531,370	3,001	-	-

DULUTH.- Receipts of Canadian bonded grain at Duluth by rail for the week ending August 12, 1933, amounted to wheat 63,039 bushels. For the period August 1, 1933 to August 12, 1933, rail receipts amounted to wheat 172,398 bushels.

Stocks of Grain at Different Elevators during the week ending August 11, 1933.

	WHEAT	OATS	BARLEY	FLAXSEED	RYE
	B U S H E L S				
Western Country Elevators/	72,136,378	5,119,505	2,253,405	160,146	924,714
Interior Pte. & Mill Elevs./	5,952,433	1,269,706	1,409,614	70,028	19,629
Interior Pub. & Semi-Pub.Terms.	2,017,843	42,970	5,625	92	224
Vancouver & NewWestminster	9,281,505	582,557	519,797	12	113,769
Victoria	172	-	-	-	-
Prince Rupert Elevators	2,775	-	-	-	-
Churchill	2,430,283	-	-	-	-
Fort William & Port Arthur	61,253,006	2,723,751	2,950,490	760,836	3,444,202
In Transit Lakes	3,460,335	276,582	40,000	55,592	-
Eastern Elevs. - Lake Ports	19,535,533	1,861,854	304,548	48,704	290,635
Eastern Elevs. - Sbd. Ports	13,260,649	724,107	559,021	-	768,833
U. S. Lake Ports	4,845,890	-	-	-	-
U. S. Atlantic Seaboard Ports	854,221	-	-	-	170,386
T O T A L S	195,031,023	12,601,032	8,042,500	1,095,410	5,702,392
Previous week	196,180,392	12,689,574	7,818,805	1,110,691	5,635,323
Same week previous year	115,967,110	5,805,487	2,935,658	1,249,031	4,765,072

/Estimated.

Quantity of Screenings received, shipped and in store at the undermentioned elevators during the week ending August 11, 1933.

SCREENINGS	Amount in Store Aug. 4, 1933		Amount Received by Vessel		Amount Shipped		Amount in Store Aug. 11, 1933	
	Tons	Lbs.	Tons	Lbs.	Tons	Lbs.	Tons	Lbs.
	Owen Sound	1,416	750	-	-	235	-	1,181
Goderich Elev. Co.	458	490	-	-	-	-	458	490
Toronto	118	1,970	-	-	-	-	118	1,970
Montreal	104	1,530	-	-	-	-	104	1,530
T O T A L S	2,098	740	-	-	235	-	1,863	740

Lake Shipments from Head of the Lakes for the period ending August 7, 1933.

	Can. Lower Lake Ports	Montreal	Sorel	Quebec	Buffalo	Other U.S.A. Ports	Europe	Halifax	Total
	Wheat	677510	524057	-	115166	-	-	-	-
Oats	659662	-	-	-	-	-	-	-	659662
Barley	60000	-	-	-	-	-	-	-	60000
Flaxseed	-	55592	-	-	-	-	-	-	55592
Rye	-	-	-	-	Nil	-	-	-	-
TOTAL	1397172	579649	-	115166	-	-	-	-	2091987
Aug. 7, 1932	2707501	879038	203000	222100	1212570	733024	-	-	5957233

Lake Shipments from Head of the Lakes for the period from the opening of navigation to August 7, 1933.

Wheat	35453759	19573105	1751204	3240904	13515638	2006085	114000	185117	75839812
Oats	4586601	734576	-	287394	-	-	-	53970	5662541
Barley	672905	702108	-	-	-	-	-	-	1375013
Flaxseed	146757	160222	-	-	-	382416	-	-	689395
Rye	37950	-	-	-	-	200000	-	-	237950
TOTAL	40897972	21170011	1751204	3528298	13515638	2588501	114000	239087	83804711
August 7, 1932	39437345	23469162	4703320	888215	11657826	1037783	-	30408	81224059

Date		Description		Amount	
1915	Jan 1	Balance		100.00	
	Feb 1	
	Mar 1	
	Apr 1	
	May 1	
	Jun 1	
	Jul 1	
	Aug 1	
	Sep 1	
	Oct 1	
	Nov 1	
	Dec 1	
	Total			...	

Number of cars of Grain unloaded at Fort William and Port Arthur over the C.P.R. and C.N.R. for the month of July, 1933, and the 12 months ending July, 1933

	Month of July, 1933			Twelve months ending July, 1933		
	C.P.R.	C.N.R.	TOTAL	C.P.R.	C.N.R.	TOTAL
Wheat	5,252	5,400½	10,652½	63,026½	69,135	132,161½
Oats	385½	570	955½	2,603	3,359	5,960
Barley	288½	317	605½	2,033	2,592½	4,625½
Flaxseed	138	108	246	553	686½	1,239½
Rye	203	179	382	853	817½	1,670½
TOTALS	6,267	6,574½	1,248½	69,068½	76,590½	145,297

Number of cars of grain unloaded at Vancouver, B.C. over the different railroads July, 1933

	Via		Via	Via	TOTAL
	C.P.R.	C.N.R.			
Wheat	1,447½	1,042	-	-	2,489½
Oats	108	58	-	-	166
Barley	58	25	-	-	83
Rye	35½	4	-	-	39½
Mixed Grain	2	-	-	-	2
TOTALS	1,651	1,129	-	-	2,780

Number of cars of grain unloaded at Vancouver, B. C. for the twelve months July, 1933

	Via		Via	Via	TOTAL
	C.P.R.	C.N.R.			
Wheat	33,536½	23,718½	-	-	57,255
Oats	1,123	937½	-	-	2,060½
Barley	624	445½	-	-	1,069½
Flaxseed	1½	-	-	-	1½
Rye	128½	23½	-	-	152
Mixed Grain	10½	10	-	1	21½
Poultry Food	1	-	-	-	1
#2 Feed Screenings	2	-	-	-	2
TOTALS	35,427	25,135	1	-	60,563

Cars inspected in the Western Inspection Division by Provinces of Origin July, 1933

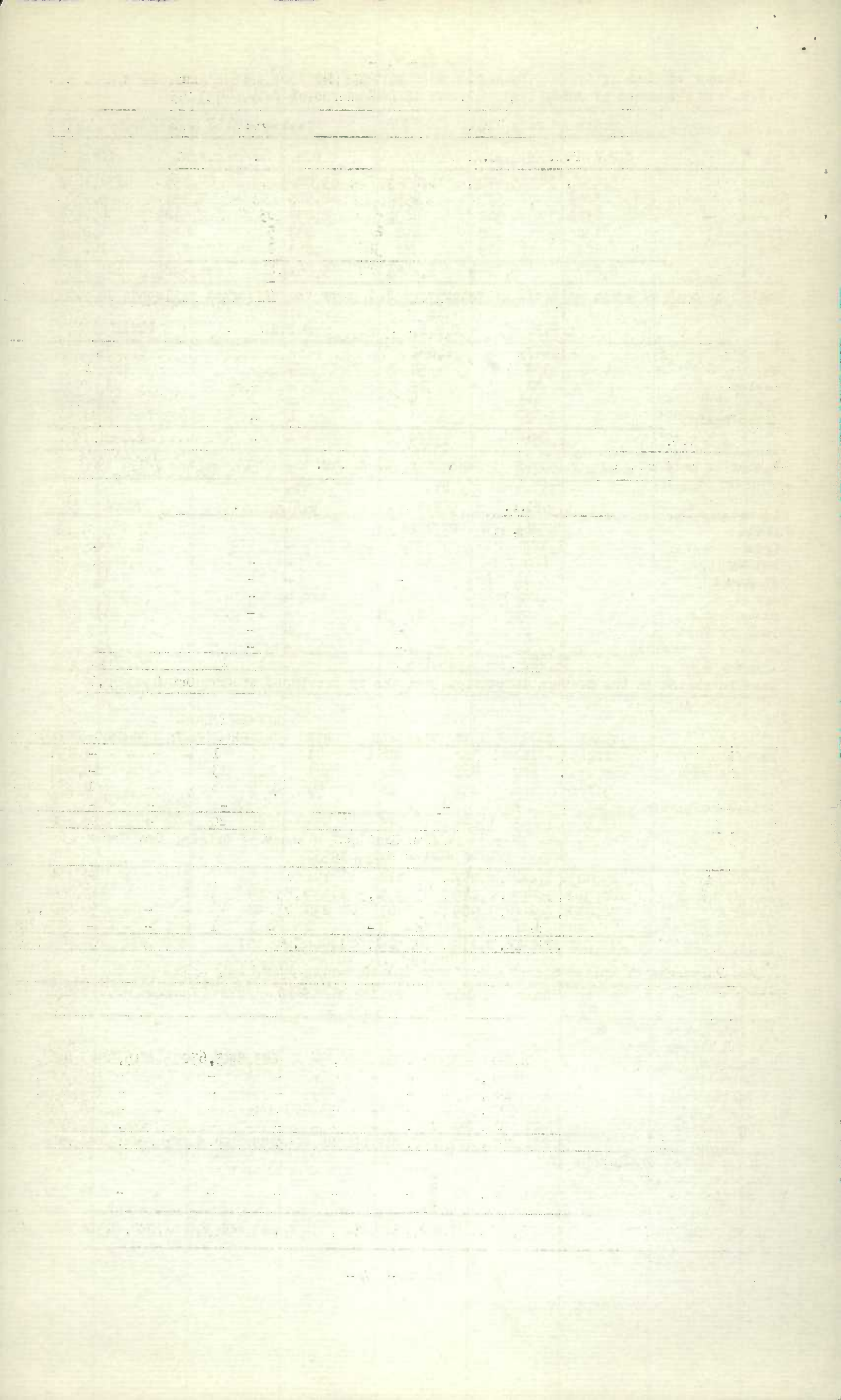
	WHEAT	OATS	BARLEY	FLAXSEED	RYE	MIXED GRAIN	BUCK-WHEAT	SCRGS.	TOTAL
Manitoba	1,219	163	382	26	43	1	-	-	1,834
Saskatchewan	8,935	629	461	260	347	13	-	-	10,645
Alberta	3,198	646	251	12	49	6	-	1	4,163
British Columbia	-	8	-	-	-	-	-	-	8
TOTALS	13,352	1,446	1,094	298	439	20	-	1	16,650

Cars inspected in the Western Inspection Division by Provinces of Origin, for the twelve months ending July, 1933.

Manitoba	23,803	1,688	3,967	118	191	5	1	1	29,774
Saskatchewan	108,316	5,653	2,245	1,339	1,535	59	2	6	119,155
Alberta	82,895	5,206	1,905	67	238	42	-	4	90,357
British Columbia	24	96	2	-	2	1	-	-	125
TOTALS	215,038	12,643	8,119	1,524	1,966	107	3	11	239,411

Lake Shipments of United States Grain from Duluth during July, 1933

	WHEAT	OATS	BARLEY	FLAXSEED	RYE	CORN	TOTAL
	BU S H E L S						
United States grain to United States Ports							
Buffalo	2,962,346	153,000	310,000	-	283,650	815,000	4,523,996
Detroit	60,000	-	-	-	-	-	60,000
Toledo	146,405	-	-	-	-	-	146,405
Cleveland	55,555	-	-	94,405	-	-	149,960
Ogdensburg	27,561	144,000	-	-	-	205,500	377,061
TOTAL	3,251,867	297,000	310,000	94,405	283,650	1,020,500	5,257,422
United States Grain to Canadian ports							
Sarnia	49,500	-	-	-	-	-	49,500
GRAND TOTAL	3,301,367	297,000	310,000	94,405	283,600	1,020,500	5,306,922



CANADIAN GRAIN IN STORE - AUGUST 11, 1933

	WHEAT	OATS	BARLEY	FLAXSEED	RYE	TOTAL
	BU S H E L S					
WESTERN COUNTRY ELEVATORS						
Manitoba	4427563	310806	679679	15544	72830	5506422
Saskatchewan	37444959	1441236	686280	117306	636370	40326151
Alberta	30263856	3367463	887446	27296	215514	34761575
TOTAL WESTERN COUNTRY ELEVS.	72136378	5119505	2253405	160146	924714	80594148
INTERIOR PRIVATE AND MILL ELEVS.						
Calgary Can. Govt. Elevs.	14154	-	-	-	-	14154
Edmonton Can. Govt. Elevs.	6627	31816	3349	-	-	41792
Lethbridge Can. Govt. Elevs.	8082	-	-	-	-	8082
Moose Jaw Can. Govt. Elevs.	3025	212	-	92	224	3553
Saskatoon Can. Govt. Elevs.	973591	10353	2276	-	-	986220
TOTAL INT. PUB. & SEMI-PUB.	2017843	42970	5625	92	224	2066754
VANCOUVER & NEW WESTMINSTER						
VICTORIA ELEVATOR	172	-	-	-	-	172
PRINCE RUPERT ELEVATOR	2775	-	-	-	-	2775
CHURCHILL	2430283	-	-	-	-	2430283
Public Terminals	4422836	121359	131894	27410	80762	4784661
Semi-Public Terminals	56765749	2595990	2817204	733426	3325772	66238141
Private Elevators	64421	6402	1392	-	7668	79883
TOTAL FT. WM. & PT. ARTHUR	61253006	2723751	2950490	760836	3414202	71102285
TRANSIT LAKES						
	3460335	276582	40000	55592	-	3872509
EASTERN ELEVATORS						
Tiffin No. 2	3260116	-	-	-	-	3260116
Midland Aberdeen	-	43209	-	-	-	43209
Midland	1006683	-	-	-	-	1006683
Midland Simcoe	3332251	815192	16792	-	-	4164235
Port McNicoll	3842729	-	-	-	-	3842729
Collingwood	178776	3349	-	-	-	182125
Owen Sound	1193709	164431	46824	48704	39963	1493631
Goderich Elev. & Transit	1311964	277036	54717	-	107500	1751217
Goderich West. Can. Flour Mill	336723	-	-	-	-	336723
Sarnia	2231043	222900	-	-	-	2453943
Sarnia Afloat	348500	-	-	-	-	348500
Port Colborne Dom. Govt. Elevs.	19571	-	19995	-	427	39993
Port Colborne Maple Leaf	1331162	177346	44558	-	524	1553590
Toronto	390225	157005	121662	-	47221	716113
Toronto Afloat	-	-	-	-	95000	95000
Kingston Richardson No. 1	14759	1348	-	-	-	16107
Kingston Elevators Co.	611841	-	-	-	-	611841
Prescott	125481	38	-	-	-	125519
TOTAL EAST. ELEVS. - LAKE PORTS	19535533	1861854	304548	48704	290635	22041274
Montreal	6395662	409497	481868	-	583925	7870952
Ogilvie Flour Mills	201695	1999	-	-	-	203694
Norris Grain Company	737718	-	-	-	-	737718
North Amer. Elev. Ltd. Sorel	1086600	-	-	-	-	1086600
North Amer. Elev. Ltd. Sorel Afloat	983677	-	-	-	-	983677
Quebec Hbr. Comms.	2260875	183826	16353	-	-	2461054
West Saint John	-	-	12515	-	-	12515
Saint John, N.B.	-	-	-	-	184908	184908
Halifax	1594422	128785	48285	-	-	1771492
TOTAL EAST. ELEVS. - SBD. PORTS	13260649	724107	559021	-	768833	15712610
TOTAL QUANTITY IN CANADA						
	189330912	12601032	8042500	1095410	5532006	216601860
Duluth	158167	-	-	-	-	158167
Buffalo	2693723	-	-	-	-	2693723
Erie	1994000	-	-	-	-	1994000
TOTAL U.S. LAKE PORTS	4845890	-	-	-	-	4845890
New York	794221	-	-	-	170386	964607
New York Afloat	60000	-	-	-	-	60000
TOTAL U.S. ATLANTIC SBD. PORTS	854221	-	-	-	170386	1024607
TOTAL QUANTITY IN STORE						
	195031023	12601032	8042500	1095410	5702392	222472357

Estimated.

x Included C.P.R. Elevator, North Transcona.

100-100000

81

DATE	DESCRIPTION	AMOUNT	BALANCE
10/1			
10/2			
10/3			
10/4			
10/5			
10/6			
10/7			
10/8			
10/9			
10/10			
10/11			
10/12			
10/13			
10/14			
10/15			
10/16			
10/17			
10/18			
10/19			
10/20			
10/21			
10/22			
10/23			
10/24			
10/25			
10/26			
10/27			
10/28			
10/29			
10/30			
10/31			
11/1			
11/2			
11/3			
11/4			
11/5			
11/6			
11/7			
11/8			
11/9			
11/10			
11/11			
11/12			
11/13			
11/14			
11/15			
11/16			
11/17			
11/18			
11/19			
11/20			
11/21			
11/22			
11/23			
11/24			
11/25			
11/26			
11/27			
11/28			
11/29			
11/30			
12/1			
12/2			
12/3			
12/4			
12/5			
12/6			
12/7			
12/8			
12/9			
12/10			
12/11			
12/12			
12/13			
12/14			
12/15			
12/16			
12/17			
12/18			
12/19			
12/20			
12/21			
12/22			
12/23			
12/24			
12/25			
12/26			
12/27			
12/28			
12/29			
12/30			
12/31			

Grades of Canadian Grain in Store at Public, Semi-Public and Private Elevators, (Head of the Lakes), Interior, Public and Semi-Public Elevators, Vancouver, New Westminster, Prince Rupert, Churchill and Victoria Terminals and Eastern Elevators for the week ending August 11, 1955.

	Public Semi-Public and Private Terminal	Interior Public and Semi-Public Terminal	Vancouver New West- minster Prince Rupert & Victoria Elevators	Eastern Elevators Lake Ports	Eastern Elevators Seaboard Ports	Total
B U S H E L S						
WHEAT						
No. 1 Hard	2,008,384	7,596	906,602	63,709	1,129,925	4,116,216
No. 1 Northern	51,567,813	496,611	2,640,618	18,505,949	7,617,596	80,828,592
No. 2 Northern	3,471,143	479,800	2,936,266	502,040	3,662,845	11,052,094
No. 3 Northern	201,696	14,826	820,739	172,500	171,121	1,380,882
No. 4 Northern	294,121	647	624,676	40,159	62,405	1,022,008
No. 5 Wheat	114,418	-	676,809	-	2,300	793,527
No. 6 Wheat	38,911	-	285,209	-	-	324,120
Feed	31,060	-	40,424	-	3,750	75,234
No. 1 C.W. Durum	1,744,518	-	-	132,936	451,962	2,329,416
No. 2 C.W. Durum	616,993	-	-	35,232	54,750	706,975
No. 3 C.W. Durum	225,104	-	-	-	35,612	260,716
No. 4 C.W. Durum	13,130	-	-	-	-	13,130
No. 5 C.W. Durum	-	-	-	-	2,000	2,000
Other Durum	102,059	-	-	25,505	27,783	155,347
Other	759,230	5,999	350,334	57,503	38,600	1,211,666
Private Elevators	64,421	-	-	-	-	64,421
T O T A L S	61,253,006	1,005,479	9,281,677	19,535,533	13,260,649	104,336,344
OATS						
No. 1 C. W.	6,231	-	-	-	-	6,231
No. 2 C. W.	1,345,868	36,919	270,454	1,045,101	39,471	2,737,813
No. 3 C. W.	564,685	1,801	102,019	288,519	169,213	1,126,237
Ex. No. 1 Feed	50,657	-	45,621	-	-	96,278
No. 1 Feed	349,579	2,592	76,905	297,496	163,412	889,984
No. 2 Feed	147,029	60	40,267	85,463	56,512	329,331
No. 3 Feed	55,258	-	-	-	-	55,258
Private Elevators	6,402	-	-	-	-	6,402
Other	198,042	1,009	47,291	145,275	295,499	687,116
T O T A L S	2,723,751	42,381	582,557	1,861,854	724,107	5,934,650
NEW GRADE BARLEY						
No. 3 Ex. C.W. 6 Row	174,872	-	11,386	59,996	-	246,254
3 Ex. C.W. Trebi	10,542	-	5,472	-	11,185	27,199
3 Ex. C.W. 2 Row	31,881	-	-	-	-	31,881
3 Ex. C. W.	-	-	-	16,792	-	16,792
3 C. W.	2,198,876	90	292,607	197,836	443,472	3,132,881
4 C. W.	315,830	3,349	99,818	-	45,751	464,748
5 C. W.	147,964	2,186	54,145	29,924	-	234,219
6 C. W.	18,867	-	14,387	-	-	33,254
Feed	-	-	-	-	-	-
Private Elevators	1,392	-	-	-	-	1,392
Other	50,266	-	41,982	-	58,613	150,861
T O T A L S	2,950,490	5,625	519,797	304,548	559,021	4,339,481
FLAXSEED						
No. 1 C. W.	727,463	92	12	48,704	-	776,271
No. 2 C. W.	7,986	-	-	-	-	7,986
No. 3 C. W.	15,012	-	-	-	-	15,012
No. 4 C. W.	1,473	-	-	-	-	1,473
Other	8,902	-	-	-	-	8,902
T O T A L S	760,836	92	12	48,704	-	809,644
RYE						
No. 1 C. W.	32,787	-	-	7,800	-	40,587
No. 2 C. W.	2,649,093	-	101,946	219,025	579,073	3,549,137
No. 3 C. W.	623,551	224	7,492	63,810	174,602	869,679
No. 4 C. W.	23,029	-	-	-	-	23,029
Ergoty	52,505	-	-	-	-	52,505
Private Elevators	7,668	-	-	-	-	7,668
Other	25,569	-	4,331	-	15,158	45,058
T O T A L S	3,414,202	224	113,769	290,635	768,833	4,587,663
TOTAL QUANTITY IN STORE						
	71,102,285	1,053,801	10,497,812	22,041,274	15,312,610	120,007,782

CANADIAN GRAIN IN STORE - COMPARATIVE STATEMENT, 1930 - 1933.

	W H E A T	OTHER GRAIN B U S H E L S	T O T A L
<u>August 11, 1933.</u>			
Country Elevators - Manitoba	4,427,563	1,078,859	5,506,422
Saskatchewan	37,444,959	2,881,192	40,326,151
Alberta	30,263,856	4,497,719	34,761,575
TOTAL	72,136,378	8,457,770	80,594,148
Interior Private and Mill Elevators	5,952,433	2,768,977	8,721,410
Interior Public and Semi-Public Terminals	2,017,843	48,911	2,066,754
Vancouver & New Westminster	9,281,505	1,216,135	10,497,640
Victoria Elevator	172	-	172
Prince Rupert Elevator	2,775	-	2,775
Churchill	2,430,283	-	2,430,283
Fort William and Port Arthur Elevs.	61,253,006	9,849,279	71,102,285
In transit Lakes	3,460,335	372,174	3,832,509
Eastern Elevators - Lake Ports	19,535,533	2,505,741	22,041,274
Eastern Elevators - Seaboard Ports	13,260,649	2,051,961	15,312,610
U. S. Lake Ports	4,845,890	-	4,845,890
U. S. Atlantic Seaboard Ports	854,221	170,386	1,024,607
T O T A L S	195,031,023	27,441,334	222,472,357
<u>August 12, 1932.</u>			
Country Elevators - Manitoba	1,397,538	249,518	1,647,056
Saskatchewan	12,830,388	887,956	13,718,344
Alberta	11,055,132	765,839	11,820,971
TOTAL	25,283,058	1,903,313	27,186,371
Interior Terminal Elevators	122,717	8,365	131,581
Vancouver Elevators	7,480,049	547,857	8,027,906
Victoria Elevator	336,015	-	336,015
Prince Rupert Elevator	840,499	9,753	850,252
Churchill	2,290,508	-	2,290,508
Fort William and Port Arthur Elevs.	42,577,772	6,348,806	48,926,578
Interior Private and Mill Elevators	5,508,563	1,624,131	7,132,694
In transit Lakes	5,174,965	992,076	6,167,041
Eastern Elevators - Lake Ports	9,241,098	1,253,704	10,494,802
Eastern Elevators - Seaboard Ports	11,082,383	1,654,308	12,736,691
U. S. Lake Ports	4,574,931	63,646	4,638,577
U. S. Atlantic Seaboard Ports	1,454,552	348,790	1,803,342
T O T A L S	115,967,110	14,755,248	130,722,358
<u>August 14, 1931.</u>			
Country Elevators - Manitoba	1,341,749	1,484,786	2,826,535
Saskatchewan	16,969,695	3,283,689	20,253,384
Alberta	10,467,255	2,012,909	12,480,164
TOTAL	28,778,699	6,781,384	35,560,083
Interior Terminal Elevators	624,798	111,211	736,009
Vancouver Elevators	9,251,733	167,780	9,419,513
Victoria Elevators	-	-	-
Prince Rupert Elevators	6,861	-	6,861
Fort William and Port Arthur Elevators	41,213,467	16,793,286	58,006,753
Interior Private and Mill Elevators	5,273,072	2,444,280	7,717,352
Eastern Elevators - Lake Ports	5,565,455	1,436,456	7,001,911
Eastern Elevators - Seaboard Ports	9,692,493	2,994,237	12,686,730
U. S. Lake Ports	4,121,657	148,424	4,270,081
U. S. Atlantic Seaboard Ports	1,291,501	4,071	1,295,572
T O T A L S	105,819,736	30,881,129	136,700,865
<u>August 15, 1930.</u>			
Country Elevators - Manitoba	351,142	1,356,531	1,707,673
Saskatchewan	4,499,997	1,858,790	6,358,787
Alberta	6,212,115	634,462	6,846,577
TOTAL	11,063,254	3,849,783	14,913,037
Interior Terminal Elevators	2,460,703	205,329	2,666,032
Vancouver Elevators	7,043,144	83,255	7,126,399
Victoria Elevator	-	-	-
Prince Rupert Elevator	891,623	378	892,001
Fort William and Port Arthur Elevators	33,929,316	21,461,788	55,391,104
Interior Private and Mfg. Elevators	3,613,510	1,611,787	5,225,297
Eastern Elevators - Lake Ports	12,015,110	3,436,333	15,451,443
Eastern Elevators - Seaboard Ports	10,439,433	3,208,770	13,648,203
U. S. Lake Ports	8,049,256	1,220,926	9,270,182
U. S. Atlantic Seaboard Ports	5,655,800	908,372	6,564,172
T O T A L S	95,161,149	35,986,721	131,147,870

Item	Description	Quantity	Unit Price	Total Price
1
2
3
4
5
6
7
8
9
10
11
12
13
14
15
16
17
18
19
20
21
22
23
24
25
26
27
28
29
30
31
32
33
34
35
36
37
38
39
40
41
42
43
44
45
46
47
48
49
50
51
52
53
54
55
56
57
58
59
60
61
62
63
64
65
66
67
68
69
70
71
72
73
74
75
76
77
78
79
80
81
82
83
84
85
86
87
88
89
90
91
92
93
94
95
96
97
98
99
100

RECEIPTS AND SHIPMENTS OF GRAIN BY CLASSES OF ELEVATORS
IN THE WEEK ENDING AUGUST 11, 1933

	WHEAT	OATS	BARLEY	FLAXSEED	RYE	TOTAL
	BU S H E L S					
<u>COUNTRY ELEVATORS, WESTERN DIVISION#</u>						
Receipts - Rail	394,491	11,911	59,898	782	34,482	608,764
Shipments - Rail	1,003,569	95,019	80,767	4,417	9,668	1,193,440
<u>INTERIOR PUBLIC AND SEMI-PUBLIC TERMINALS</u>						
Receipts - Rail	17,448	-	1,301	-	-	18,749
Shipments - Rail	2,308	-	-	-	-	2,308
<u>VANCOUVER - NEW WESTMINSTER ELEVATORS</u>						
Receipts - Rail	387,811	19,556	24,105	-	-	431,472
Shipments - Vessel	244,733	-	-	-	-	244,733
Rail	-	4,823	-	-	-	4,823
<u>PUBLIC AND PRIVATE TERMINAL ELEVATORS FORT WILLIAM AND PORT ARTHUR</u>						
Receipts - Rail	2,053,961	219,659	160,312	16,425	59,102	2,509,459
Shipments - Vessel	2,346,239	329,183	65,000	54,886	-	2,795,308
Rail	13,368	32,825	-	1,440	-	47,633
<u>INTERIOR PRIVATE AND MILL ELEVATORS #</u>						
Receipts - Rail	467,642	87,707	73,443	2,062	1,431	632,285
Shipments - Rail	452,011	95,061	72,178	2,400	-	621,650
<u>EASTERN ELEVATORS - GEORGIAN BAY PORTS</u>						
Receipts - Vessel	728,060	602,944	-	-	-	1,331,004
Shipments - Rail	40,500	11,915	-	-	-	52,415
Local and Mill	116,266	8,350	3,250	34,615	-	162,481
<u>LOWER LAKE PORTS</u>						
Receipts - Vessel	751,462	245,512	59,996	-	-	1,056,970
Rail	1,991	2,386	-	-	-	4,377
Shipments - Vessel	1,778,796	-	-	-	-	1,778,796
Rail	3,871	1,100	1,395	-	-	6,366
Local and Mill	185,765	39,046	31,748	-	4,385	260,944
<u>ST. LAWRENCE PORTS</u>						
Receipts - Vessel	1,614,642	-	36,920	-	-	1,651,562
Rail	-	3,746	-	-	-	3,746
Shipments - Vessel	2,004,420	12,011	16,705	-	8,571	2,041,707
Local and Mill	87,866	38,449	11,093	-	-	137,408
<u>SEABOARD PORTS</u>						
Receipts - Vessel	276,091	84,049	-	-	-	360,140
Shipments - Rail(Local)	315	4,247	500	-	-	5,062
<u>TOTAL EASTERN ELEVATORS</u>						
Receipts - Vessel	3,370,255	932,505	96,916	-	-	4,399,676
Rail	1,991	6,132	-	-	-	8,123
Shipments - Vessel	3,783,216	12,011	16,705	-	8,571	3,820,503
Rail	44,371	13,015	1,395	-	-	58,781
Local and Mill	390,212	90,092	46,591	34,615	4,385	565,895

Week ending August 4, 1933.

DATE	DESCRIPTION	AMOUNT	CHECK NO.	BANK	INITIALS
1/15/50
1/20/50
1/25/50
2/1/50
2/10/50
2/15/50
2/20/50
2/25/50
3/1/50
3/10/50
3/15/50
3/20/50
3/25/50
4/1/50
4/10/50
4/15/50
4/20/50
4/25/50
5/1/50
5/10/50
5/15/50
5/20/50
5/25/50
6/1/50
6/10/50
6/15/50
6/20/50
6/25/50
7/1/50
7/10/50
7/15/50
7/20/50
7/25/50
8/1/50
8/10/50
8/15/50
8/20/50
8/25/50
9/1/50
9/10/50
9/15/50
9/20/50
9/25/50
10/1/50
10/10/50
10/15/50
10/20/50
10/25/50
11/1/50
11/10/50
11/15/50
11/20/50
11/25/50
12/1/50
12/10/50
12/15/50
12/20/50
12/25/50
TOTAL					

STOCKS OF UNITED STATES GRAIN IN CANADA AT AUGUST 11, 1933

	WHEAT	OATS	BARLEY	RYE	CORN	TOTAL
	B U S H E L S					
Depot Harbour	554,349	132,438	-	-	651,385	1,338,172
Tiffin # 2	-	-	-	-	76,653	76,653
Midland Aberdeen	9,387	105,917	-	-	213,369	328,673
Midland Grain	-	116,772	-	-	665,379	782,151
Port McNicoll	-	60,729	-	-	927,898	988,627
Collingwood Terminal	-	-	-	-	1,702,141	1,702,141
Collingwood C.N.R.	-	198	-	-	5,120	5,318
Owen Sound, G.L.	-	540,273	-	-	1,165,779	1,706,052
Goderich Elev. Co.	-	-	-	-	1,184,075	1,184,075
Sarnia	53,261	-	-	-	571,826	625,087
Port Colborne Maple Leaf	-	-	-	-	77,767	77,767
Toronto	989,797	-	-	-	62,627	1,052,424
Montreal Harbour Commrs.						
No. 1, 2 and B.	743,309	-	-	1,106	216,327	960,742
North Amer. Elev. Sorel	569,027	-	-	-	-	569,027
Quebec	792,060	-	-	-	-	792,060
T O T A L S	3,711,190	956,327	-	1,106	7,520,346	12,188,969
Same week previous year	14,669,001	361,713	1,250	121,058	572,243	15,725,265

RECEIPTS AND SHIPMENTS OF UNITED STATES GRAIN AUGUST 11, 1933.

	R E C E I P T S		S H I P M E N T S	
	Water	Rail	Water	Rail
	<u>GEORGIAN BAY PORTS</u>			
Wheat	-	-	-	118,061
Oats	24,970	-	-	98,800
Corn	-	-	-	193,963
	<u>LOWER LAKE PORTS</u>			
Corn	-	1,066	-	83,261

STOCKS OF FOREIGN GRAIN IN CANADA AUGUST 11, 1933.

	Argentine Corn	South Africa Corn	Total Corn	Argentine Flaxseed
Port Colborne, D.G.	-	11,902	11,902	-
Port Colborne, M.L.	65,660	64,753	130,413	-
Toronto	898	8,586	9,484	-
Kingston, J.R.	5,649	1,013	6,662	-
Prescott	-	15,775	15,775	-
Montreal	23,677	246,804	270,481	75,000
Sorel	-	4,999	4,999	-
Quebec	-	58,200	58,200	-
Saint John	-	37,880	37,880	-
Halifax	66,152	112,612	178,764	-
T O T A L S	162,036	562,524	724,560	-
Same week previous year	130,089	615,671	745,760	-

Receipts and Shipments of Foreign Grain in Canada for the week ending August 11, 1933.

	ARGENTINE CORN		SOUTH AFRICA CORN		ARGENTINE FLAXSEED	
	Receipts	Shipments	Receipts	Shipments	Receipts	Shipments
Lower Lake Ports	-	435	24,681	18,710	-	-
St. Lawrence Ports	-	1,000	-	17,450	-	76,158
Seaboard Ports	-	3,421	-	13,700	-	-

1914

Date	Particulars	Debit	Credit	Balance
Jan 1	Balance forward			100.00
Jan 5
Jan 10
Jan 15
Jan 20
Jan 25
Jan 30
Feb 1
Feb 5
Feb 10
Feb 15
Feb 20
Feb 25
Feb 28

1915

Date	Particulars	Debit	Credit	Balance
Jan 1	Balance forward			100.00
Jan 5
Jan 10
Jan 15
Jan 20
Jan 25
Jan 30
Feb 1
Feb 5
Feb 10
Feb 15
Feb 20
Feb 25
Feb 28

1916

Date	Particulars	Debit	Credit	Balance
Jan 1	Balance forward			100.00
Jan 5
Jan 10
Jan 15
Jan 20
Jan 25
Jan 30
Feb 1
Feb 5
Feb 10
Feb 15
Feb 20
Feb 25
Feb 28

STOCKS, RECEIPTS AND SHIPMENTS OF THE COUNTRY ELEVATORS IN THE WESTERN
DIVISION IN THE WEEK ENDING AUGUST 4, 1933

	WHEAT	OATS	BARLEY	FLAXSEED	RYE	TOTAL
	B U S H E L S					
<u>MANITOBA</u>						
In Store, previous week	4,483,668	296,135	656,048	11,706	72,313	5,519,870
Receipts	60,245	9,372	22,727	25	5,633	98,002
TOTAL	4,543,913	305,507	678,775	11,731	77,946	5,617,872
Shipments	423,863	11,756	27,062	2,106	2,276	467,063
In Store	4,106,165	296,341	629,094	15,418	65,981	5,112,999
<u>SASKATCHEWAN</u>						
In Store, previous week	37,944,128	1,406,138	738,588	102,303	613,876	40,805,033
Receipts	85,408	20,427	14,648	724	10,074	131,281
TOTAL	38,029,536	1,426,565	753,236	103,027	623,950	40,936,314
Shipments	281,216	10,493	21,634	1,885	7,392	322,620
In Store	37,658,537	1,449,664	719,363	116,338	626,389	40,570,291
<u>ALBERTA</u>						
In Store, previous week	29,905,084	3,358,066	863,719	27,262	192,661	34,346,792
Receipts	248,838	89,312	22,523	33	18,775	379,481
TOTAL	30,153,922	3,447,378	886,242	27,295	211,436	34,726,273
Shipments	298,490	72,770	32,071	426	-	403,757
In Store	30,197,711	3,404,850	856,927	26,869	211,928	34,698,285

TOTAL RECEIPTS AT COUNTRY ELEVATORS AND PLATFORM LOADINGS# IN THE
PERIOD AUGUST 1, 1933 to August 4, 1933.

	WHEAT	OTHER GRAIN	TOTAL
	B U S H E L S		
Manitoba	60,245	37,757	98,002
Saskatchewan	85,408	45,873	131,281
Alberta	248,838	130,643	379,481
Total 1932 - 1933	394,491	214,273	608,764
Same period 1931 - 1932	520,486	250,184	770,670

#Platform Loadings not reported.

INTERIOR TERMINAL ELEVATORS

Receipts, Shipments and Quantities in Store, week ending August 11, 1933

	WHEAT	OATS	BARLEY	FLAXSEED	RYE	TOTAL
	B U S H E L S					
<u>CALGARY</u>						
In Store, previous week	14,154	-	-	-	-	14,154
Receipts			Nil			
TOTAL	14,154	-	-	-	-	14,154
Shipments - Rail			Nil			
In Store	14,154	-	-	-	-	14,154
<u>EDMONTON</u>						
In Store, previous week	7,630	31,816	3,349	-	-	42,795
Receipts			Nil			
TOTAL	7,630	31,816	3,349	-	-	42,795
Shipments - Rail	1,003	-	-	-	-	1,003
In Store	6,627	31,816	3,349	-	-	41,792
<u>LETHBRIDGE</u>						
In Store, previous week	7,184	-	-	-	-	7,184
Receipts	898	-	-	-	-	898
TOTAL	8,082	-	-	-	-	8,082
Shipments - Rail			Nil			
In Store	8,082	-	-	-	-	8,082
<u>MOOSE JAW</u>						
In Store, previous week	4,330	212	-	92	224	4,858
Receipts			Nil			
TOTAL	4,330	212	-	92	224	4,858
Shipments - Rail	1,305	-	-	-	-	1,305
In Store	3,025	212	-	92	224	3,553
<u>SASKATOON</u>						
In Store previous week	957,041	10,353	975	-	-	968,369
Receipts	16,550	-	1,301	-	-	17,851
TOTAL	973,591	10,353	2,276	-	-	986,220
Shipments - Rail			Nil			
In Store	973,591	10,353	2,276	-	-	986,220
<u>CHURCHILL</u>						
<u>PUBLIC TERMINAL</u>						
In Store, previous week	2,430,283	-	-	-	-	2,430,283
Receipts			Nil			
TOTAL	2,430,283	-	-	-	-	2,430,283
Shipments - Vessel			Nil			
In Store	2,430,283	-	-	-	-	2,430,283

STATE OF NEW YORK

IN SENATE
January 10, 1911.

REPORT
OF THE
COMMISSIONERS OF THE LAND OFFICE
IN RESPONSE TO A RESOLUTION PASSED BY THE SENATE
MAY 15, 1908.

ALBANY:
J. B. WARD, STATE PRINTER,
1911.

THE STATE OF NEW YORK
OFFICE OF THE COMMISSIONERS OF THE LAND OFFICE
ALBANY, N. Y.

REPORT
OF THE
COMMISSIONERS OF THE LAND OFFICE
IN RESPONSE TO A RESOLUTION PASSED BY THE SENATE
MAY 15, 1908.

ALBANY:
J. B. WARD, STATE PRINTER,
1911.

THE STATE OF NEW YORK
OFFICE OF THE COMMISSIONERS OF THE LAND OFFICE
ALBANY, N. Y.

REPORT
OF THE
COMMISSIONERS OF THE LAND OFFICE
IN RESPONSE TO A RESOLUTION PASSED BY THE SENATE
MAY 15, 1908.

STOCKS, RECEIPTS AND SHIPMENTS OF THE PACIFIC COAST ELEVATORS
IN THE WEEK ENDING AUGUST 11, 1933

	WHEAT	OATS	BARLEY	FLAXSEED	RYE	TOTAL
	B U S H E L S					
<u>VANCOUVER-NEW WESTMINSTER</u>						
In Store, previous week	9,139,926	568,764	495,692	12	113,769	10,318,163
Receipts	387,811	19,556	24,105	-	-	431,472
TOTAL	9,527,737	588,320	519,797	12	113,769	10,749,635
Shipments - Vessel	244,733	-	-	-	-	244,733
Rail	-	4,823	-	-	-	4,823
In Store	9,281,505	582,557	519,797	12	113,769	10,497,640
<u>PRINCE RUPERT</u>						
In Store, previous week	2,775	-	-	-	-	2,775
Receipts	-	-	Nil	-	-	-
TOTAL	2,775	-	-	-	-	2,775
Shipments - Vessel	-	-	Nil	-	-	-
In Store	2,775	-	-	-	-	2,775
<u>VICTORIA</u>						
In Store, previous week	172	-	-	-	-	172
Receipts	-	-	Nil	-	-	-
TOTAL	172	-	-	-	-	172
Shipments - Vessel	-	-	Nil	-	-	-
In Store	172	-	-	-	-	172

DAILY AND WEEKLY AVERAGE PRICES OF WHEAT IN THE WESTERN DIVISION
IN THE WEEK ENDING AUGUST 12, 1933

(Basis Vancouver, B. C.)

	Aug. 7 ¢	Aug. 8 ¢	Aug. 9 ¢	Aug. 10 ¢	Aug. 11 ¢	Aug. 12 ¢	Weekly Average ¢
No. 1 Hard		78.9	79.5	80.0	75.7	69.7	76.7
No. 1 Northern		77.3	78.0	78.5	74.2	68.2	75.2
No. 2 Northern		74.3	75.0	75.5	71.2	65.2	72.2
No. 3 Northern		69.9	71.0	71.5	67.7	61.7	68.4
No. 4 Northern	Holiday	68.3	69.5	70.0	66.2	60.2	66.8
No. 5		62.3	63.5	64.0	60.2	54.2	60.8
No. 6		59.3	60.5	61.0	57.2	51.2	57.8
Feed		56.3	57.5	58.0	54.2	48.2	54.8

OFFICE OF THE ATTORNEY GENERAL

IN SENATE
 January 15, 1914

REPORT OF THE
 COMMISSIONERS OF THE LAND OFFICE
 FOR THE YEAR 1913

PUBLISHED BY THE STATE PRINTING OFFICE
 ALBANY, N. Y., 1914

ALBANY, N. Y.: STATE PRINTING OFFICE, 1914.

THE STATE OF NEW YORK

DAILY AND WEEKLY AVERAGE PRICES OF GRAIN
Week ending August 12, 1933

WESTERN DIVISION
(Basis Fort William and Port Arthur)

	Aug. 7 \$ ¢	Aug. 8 \$ ¢	Aug. 9 \$ ¢	Aug. 10 \$ ¢	Aug. 11 \$ ¢	Aug. 12 \$ ¢	Weekly Average \$ ¢
<u>WHEAT</u>							
No. 1 Man. Hard		79.6	81.0	81.7	77.7	71.7	78.3
No. 1 Man. Northern		78.3	79.5	80.0	76.1	70.2	76.8
No. 2 Man. Northern		76.1	77.2	78.0	74.0	68.1	74.7
No. 3 Man. Northern		73.9	75.2	76.0	72.2	66.2	72.7
No. 4 Man. Northern		71.3	72.5	73.0	69.2	63.2	69.8
No. 5		66.3	68.5	69.0	65.2	59.2	65.6
No. 6		62.3	64.5	65.0	61.2	55.2	61.6
Feed		60.3	62.5	63.0	59.2	53.2	59.6
Rejected No. 1 Northern		72.3	73.5	74.0	70.2	64.2	70.8
No. 2 Northern		69.9	71.0	71.5	67.7	61.7	68.4
No. 3 Northern		67.9	69.0	69.5	65.7	59.7	66.4
Tough No. 1 Northern		76.6	77.7	78.2	74.5	68.5	75.1
No. 2 Northern		74.1	75.2	76.0	72.0	66.1	72.7
No. 3 Northern		71.9	73.2	74.0	70.2	64.2	70.7
Smutty No. 1 Northern		73.3	74.5	75.0	71.2	65.2	71.8
No. 2 Northern		70.9	72.0	72.5	68.7	62.7	69.4
No. 3 Northern		68.3	69.5	70.0	66.2	60.2	66.8
Durum No. 1		79.3	80.5	81.0	77.2	71.7	77.9
No. 2		76.3	77.5	78.0	74.2	68.7	74.9
No. 3		71.3	72.5	73.0	69.2	63.2	69.8
A. R. W. No. 1		73.3	74.5	75.0	71.2	65.2	71.8
No. 2		71.3	72.5	73.0	69.2	63.2	69.8
No. 3		69.3	70.5	71.0	67.2	61.2	67.8
	Holiday						
<u>OATS</u>							
No. 2 C. W.		39.7	41.1	42.2	40.3	38.3	40.3
No. 3 C. W.		37.3	38.6	39.7	38.0	36.0	37.9
Ex. No. 1 Feed		38.1	39.1	40.5	38.7	36.7	38.6
No. 1 Feed		36.6	37.9	39.2	37.5	35.5	37.3
No. 2 Feed		34.6	36.1	37.5	35.7	33.7	35.5
No. 3 Feed		31.6	33.1	34.0	32.2	30.2	32.2
<u>BARLEY (NEW GRADE)</u>							
2 Row		52.5	53.0	53.2	49.9	47.2	51.2
6 Row		54.0	54.5	54.7	51.3	48.7	52.6
Trebi		49.0	49.6	50.0	46.6	44.0	47.8
No. 3 C. W.		49.0	49.6	50.0	46.6	44.0	47.8
No. 4 C. W.		45.0	46.0	46.7	43.3	40.7	44.3
No. 5 C. W.		44.0	45.0	45.7	42.3	39.7	43.3
No. 6 C. W.		43.0	44.0	44.7	41.3	38.7	42.3
<u>RYE</u>							
No. 1 C. W.		54.2	55.9	56.6	52.6	47.6	53.4
No. 2 C. W.		54.2	55.9	56.6	52.6	47.6	53.4
No. 3 C. W.		51.2	52.7	53.5	49.5	44.5	50.3
Rejected No. 2 C. W.		50.2	51.7	52.5	48.5	43.5	49.3
No. 4 C. W.		49.7	51.2	52.0	48.0	43.0	48.8
Rejected for Ergot		49.2	50.7	51.5	47.5	42.5	48.3
<u>FLAXSEED</u>							
No. 1 C. W.		1.377	1.425	1.462	1.405	1.355	1.405
No. 2 C. W.		1.337	1.385	1.422	1.365	1.315	1.365
No. 3 C. W.		1.105	1.15	1.187	1.13	1.08	1.130
No. 4 C. W.		1.105	1.15	1.187	1.13	1.08	1.130

ONTARIO - TORONTO

Wheat, good Milling .79 .79 .79 .79 .79 .79 .79

THE UNIVERSITY OF CHICAGO

PHYSICS DEPARTMENT

NO.	NAME	ADDRESS	CITY	STATE	ZIP
1					
2					
3					
4					
5					
6					
7					
8					
9					
10					
11					
12					
13					
14					
15					
16					
17					
18					
19					
20					
21					
22					
23					
24					
25					
26					
27					
28					
29					
30					
31					
32					
33					
34					
35					
36					
37					
38					
39					
40					
41					
42					
43					
44					
45					
46					
47					
48					
49					
50					
51					
52					
53					
54					
55					
56					
57					
58					
59					
60					
61					
62					
63					
64					
65					
66					
67					
68					
69					
70					
71					
72					
73					
74					
75					
76					
77					
78					
79					
80					
81					
82					
83					
84					
85					
86					
87					
88					
89					
90					
91					
92					
93					
94					
95					
96					
97					
98					
99					
100					

Receipts and Shipments of Grain at the Country Elevators in the Western Division
and Platform Loading for the twelve months ending July, 1933.

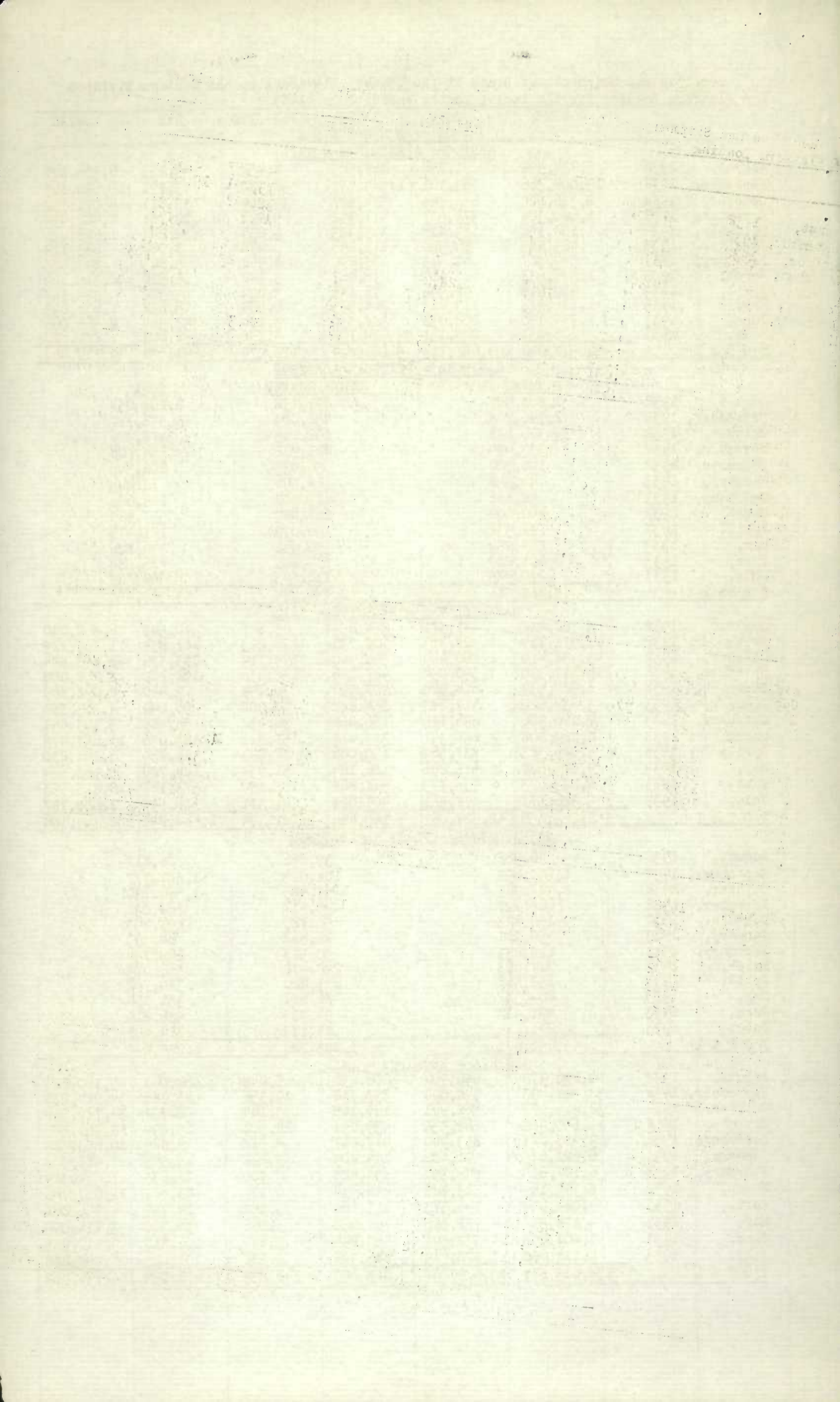
		WHEAT	OATS	BARLEY	FLAXSEED	RYE	TOTAL
		B U S H E L S					
		MANITOBA - RECEIPTS - RAIL					
August, 1932		5,724,498	91,752	468,525	4,452	44,953	6,334,180
September, 1932		13,002,566	963,101	1,544,531	36,080	73,891	15,620,169
October, 1932		2,716,500	652,745	574,677	39,769	38,011	4,021,702
November, 1932		1,620,324	372,507	411,352	5,491	12,761	2,422,435
December, 1932		1,108,154	183,416	393,383	3,234	8,243	1,696,430
January, 1933		423,885	86,500	119,255	472	3,002	633,114
February, 1933		599,587	161,373	128,290	1,962	5,823	897,035
March, 1933		1,576,633	423,917	296,467	3,142	15,510	2,315,669
April, 1933		690,646	98,994	96,156	3,029	5,322	894,147
May, 1933		1,176,918	173,219	264,575	6,534	15,652	1,636,898
June, 1933		1,734,150	202,038	388,330	9,184	32,364	2,366,066
July, 1933		205,031	248,151	420,708	4,730	2,002	880,622
T O T A L		30,578,892	3,657,713	5,106,249	118,079	257,534	39,718,467

		WHEAT	OTHER GRAINS	TOTAL
		MANITOBA - PLATFORM LOADINGS		
August, 1932		1,808,922	291,132	2,100,054
September, 1932		2,740,748	352,029	3,592,777
October, 1932		376,681	102,245	478,926
November, 1932		333,494	221,312	554,806
December, 1932		146,509	56,033	202,542
January, 1933		44,348	28,096	72,444
February, 1933		98,886	27,802	126,688
March, 1933		400,000	157,420	557,420
April, 1933		81,332	40,079	121,411
May, 1933		265,884	70,942	336,826
June, 1933		601,287	174,801	776,088
July, 1933		270,425	112,543	382,968
T o t a l		7,168,516	2,134,434	9,302,950

		SASKATCHEWAN - RECEIPTS - RAIL				
August, 1932		5,782,212	441,371	254,253	43,647	6,862,030
September, 1932		68,971,714	1,528,713	720,731	226,223	71,869,215
October, 1932		43,932,410	1,860,449	392,940	599,719	46,988,894
November, 1932		16,117,370	1,390,094	487,146	155,476	18,252,808
December, 1932		6,920,539	614,525	407,596	76,749	8,098,849
January, 1933		3,632,610	417,283	154,862	53,084	4,313,888
February, 1933		4,166,906	696,126	156,468	30,732	5,103,641
March, 1933		8,869,648	2,250,341	357,412	57,018	11,657,475
April, 1933		5,026,325	837,569	150,006	72,096	6,161,230
May, 1933		4,624,678	576,256	186,124	51,934	5,568,694
June, 1933		8,884,673	935,773	511,828	113,150	10,818,593
July, 1933		5,326,571	978,561	401,089	41,371	7,053,787
T O T A L		182,255,656	12,527,061	4,180,455	1,521,199	202,749,104

		SASKATCHEWAN - PLATFORM LOADINGS		
August, 1932		46,962	39,256	86,218
September, 1932		1,699,692	108,085	1,807,777
October, 1932		1,427,325	159,405	1,586,730
November, 1932		665,117	96,917	762,034
December, 1932		150,423	50,720	201,143
January, 1933		50,111	14,482	64,593
February, 1933		118,231	50,523	168,754
March, 1933		317,603	248,470	566,073
April, 1933		157,562	213,200	370,762
May, 1933		264,512	86,682	351,194
June, 1933		491,914	94,305	586,219
July, 1933		241,219	83,183	324,402
T O T A L		5,630,671	1,245,228	6,875,899

		ALBERTA - RECEIPTS - RAIL				
August, 1932		4,236,372	650,904	206,236	5,248	5,160,821
September, 1932		33,568,493	948,694	333,712	19,354	34,914,038
October, 1932		32,914,927	1,568,991	157,165	53,164	34,722,584
November, 1932		16,659,468	1,268,550	439,091	18,502	18,401,505
December, 1932		9,403,223	813,940	417,817	8,518	10,653,323
January, 1933		6,602,675	591,482	199,809	3,228	7,412,537
February, 1933		6,127,614	895,357	194,425	2,700	7,232,329
March, 1933		8,985,164	2,313,728	290,434	6,733	11,617,746
April, 1933		4,024,614	743,373	113,660	3,852	4,905,258
May, 1933		4,178,517	731,125	167,052	3,096	5,114,090
June, 1933		7,201,203	1,332,591	460,844	9,492	9,110,943
July, 1933		4,111,600	1,820,919	446,395	8,352	6,488,288
T O T A L		138,013,870	13,679,554	3,426,640	142,239	155,733,462



Receipts and Shipments of Grain in the Country Elevators in the Western Division
and Platform Loadings for the month and twelve months ending July, 1933.

		WHEAT	OATS	BARLEY	FLAXSEED	RYE	TOTAL
		B U S H E L S					
		ALBERTA - PLATFORM LOADINGS					
		WHEAT	OTHER GRAINS			TOTAL	
August, 1932		34,365	36,407			70,772	
September, 1932		554,463	33,046			587,509	
October, 1932		1,335,545	85,945			1,421,490	
November, 1932		1,061,168	239,393			1,300,561	
December, 1932		757,025	327,173			1,084,198	
January, 1933		546,371	101,744			648,115	
February, 1933		431,518	131,297			562,815	
March, 1933		700,901	288,355			989,256	
April, 1933		331,283	139,970			471,253	
May, 1933		338,498	124,562			463,060	
June, 1933		552,558	180,582			733,140	
July, 1933		369,510	223,598			593,108	
T O T A L		7,013,205	1,912,072			8,925,277	

		TOTAL COUNTRY ELEVATORS - PRAIRIE PROVINCES - RECEIPTS - RAIL					
August, 1932		15,743,081	1,184,027	929,014	53,346	447,560	18,357,028
September, 1932		115,542,773	3,440,508	2,598,975	281,658	539,510	122,403,424
October, 1932		79,563,837	4,082,186	1,124,782	692,653	269,722	85,733,180
November, 1932		34,397,162	3,031,150	1,337,589	179,467	131,378	39,076,746
December, 1932		17,431,917	1,611,884	1,218,796	88,503	97,510	20,448,610
January, 1933		10,659,170	1,095,266	473,926	56,784	74,393	12,359,539
February, 1933		10,894,107	1,752,855	479,184	35,394	71,465	13,233,005
March, 1933		19,431,444	4,987,986	944,312	66,892	160,252	25,590,886
April, 1933		9,741,586	1,679,937	359,823	78,978	100,316	11,960,640
May, 1933		9,980,110	1,480,599	617,749	61,542	179,652	12,319,652
June, 1933		17,820,028	2,470,402	1,361,003	131,827	512,347	22,295,607
July, 1933		9,643,203	3,047,631	1,268,194	54,453	409,220	14,422,701
T O T A L S		350,848,418	29,864,431	12,713,347	1,781,497	2,993,325	398,201,018

TOTAL PLATFORM LOADINGS - PRAIRIE PROVINCES

August, 1932		1,890,240	366,795	2,257,044	
September, 1932		4,994,903	993,160	5,988,063	
October, 1932		3,139,551	347,595	3,487,146	
November, 1932		2,059,779	557,622	2,617,401	
December, 1932		1,053,957	433,926	1,487,883	
January, 1933		640,830	144,322	785,152	
February, 1933		648,635	209,622	858,257	
March, 1933		1,418,504	694,245	2,112,749	
April, 1933		570,177	393,249	963,426	
May, 1933		568,894	282,186	1,151,080	
June, 1933		1,645,759	449,688	2,095,447	
July, 1933		881,154	419,324	1,300,478	
T O T A L		19,812,392	5,291,734	25,104,126	

TOTAL SHIPMENTS - RAIL - PRAIRIE PROVINCES

August, 1932		20,221,509	698,272	402,801	59,133	314,034	21,695,749
September, 1932		70,181,150	1,858,085	1,517,275	58,008	358,908	73,973,426
October, 1932		47,487,422	3,092,206	963,269	293,554	189,068	52,025,519
November, 1932		24,873,290	3,164,450	856,570	190,997	81,389	29,166,696
December, 1932		14,123,844	1,340,303	916,084	68,682	56,689	16,505,602
January, 1933		13,293,039	993,910	353,008	43,492	42,413	14,725,862
February, 1933		11,549,081	1,238,461	361,537	21,882	44,526	13,215,487
March, 1933		21,794,793	2,645,662	821,208	231,002	248,019	25,740,684
April, 1933		12,244,912	3,397,513	693,230	142,826	144,276	16,622,757
May, 1933		19,096,913	2,453,846	1,068,709	79,562	191,482	22,890,512
June, 1933		34,007,229	2,118,336	1,521,745	281,306	421,065	38,349,681
July, 1933		17,704,715	2,571,835	1,447,352	302,024	544,792	22,570,718
T O T A L		306,577,897	25,572,879	10,922,788	1,772,468	2,636,661	347,482,693

Receipts of grain at Interior Public, and Semi-Public Elevators for the month of July, and the twelve months ending July, 1933.

		GOVERNMENT INTERIOR TERMINAL ELEVATORS - RECEIPTS - RAIL					
August, 1932		151,485	2,476	1,453	-	707	156,121
September, 1932		1,704,077	6,571	1,332	272	353	1,712,605
October, 1932		4,737,777	27,151	1,720	-	-	4,766,648
November, 1932		975,073	23,378	-	-	-	998,451
December, 1932		23,620	14,934	2,755	-	-	41,309
January, 1933		4,849	9,408	629	-	-	14,886
February, 1933		7,460	16,276	-	-	-	23,736
March, 1933		15,993	7,380	3,249	-	-	26,622
April, 1933		3,870	15,601	-	-	-	19,471
May, 1933		4,621	-	-	-	-	4,621
June, 1933		9,561	10,757	2,107	47	-	22,472
July, 1933		7,768	22,131	5,431	-	-	35,330
T O T A L		7,646,154	156,063	18,676	319	1,060	7,822,272

YEAR	PLANT	QUANTITY	UNIT	VALUE
1912
1913
1914
1915
1916
1917
1918
1919
1920
1921
1922
1923
1924
1925
1926
1927
1928
1929
1930
1931
1932
1933
1934
1935
1936
1937
1938
1939
1940
1941
1942
1943
1944
1945
1946
1947
1948
1949
1950

YEAR	PLANT	QUANTITY	UNIT	VALUE
1912
1913
1914
1915
1916
1917
1918
1919
1920
1921
1922
1923
1924
1925
1926
1927
1928
1929
1930
1931
1932
1933
1934
1935
1936
1937
1938
1939
1940
1941
1942
1943
1944
1945
1946
1947
1948
1949
1950

YEAR	PLANT	QUANTITY	UNIT	VALUE
1912
1913
1914
1915
1916
1917
1918
1919
1920
1921
1922
1923
1924
1925
1926
1927
1928
1929
1930
1931
1932
1933
1934
1935
1936
1937
1938
1939
1940
1941
1942
1943
1944
1945
1946
1947
1948
1949
1950

YEAR	PLANT	QUANTITY	UNIT	VALUE
1912
1913
1914
1915
1916
1917
1918
1919
1920
1921
1922
1923
1924
1925
1926
1927
1928
1929
1930
1931
1932
1933
1934
1935
1936
1937
1938
1939
1940
1941
1942
1943
1944
1945
1946
1947
1948
1949
1950

YEAR	PLANT	QUANTITY	UNIT	VALUE
1912
1913
1914
1915
1916
1917
1918
1919
1920
1921
1922
1923
1924
1925
1926
1927
1928
1929
1930
1931
1932
1933
1934
1935
1936
1937
1938
1939
1940
1941
1942
1943
1944
1945
1946
1947
1948
1949
1950

Shipments of Grain at Interior, Public and Semi-Public Elevators for the twelve months ending July, 1933.

		WHEAT	OATS	BARLEY	FLAXSEED	RYE	TOTAL
		B U S H E L S					
		SHIPMENTS - RAIL					
August, 1932		48,768	7,348	1,140	939	747	58,942
September, 1932		58,446	4,891	4,089	272	353	68,051
October, 1932		538,696	5,412	1,204	-	-	545,312
November, 1932		3,617,125	6,086	2,297	-	-	3,625,508
December, 1932		682,481	33	1,085	-	-	683,599
January, 1933		284,987	3,301	1,877	-	-	290,165
February, 1933		257,939	-	-	-	-	257,939
March, 1933		63,153	-	1,258	-	-	64,411
April, 1933		28,522	78,863	1,734	-	-	109,119
May, 1933		165,612	15,536	-	-	-	181,148
June, 1933		956,338	12,199	-	47	4	968,588
July, 1933		19,366	206	5,704	-	46	25,322
T O T A L		6,721,433	133,800	20,388	1,258	1,150	6,878,104

Receipts and Shipments of grain at Vancouver - New Westminster for the month of July, 1933, and the twelve months ending July, 1933.

		VANCOUVER - NEW WESTMINSTER - RECEIPTS - RAIL					
August, 1932		3,303,004	2,303	-	-	-	3,305,307
September, 1932		9,070,116	80,229	57,287	-	11,616	9,219,248
October, 1932		11,678,816	522,082	82,994	121	1,173	12,285,186
November, 1932		11,513,961	965,901	144,091	-	1,173	12,625,126
December, 1932		12,938,251	913,667	409,555	-	-	14,261,473
January, 1933		9,306,683	292,705	192,999	233	847	9,793,467
February, 1933		7,788,184	179,827	128,734	184	847	8,097,776
March, 1933		10,305,551	296,646	230,877	16	13,080	10,846,170
April, 1933		3,749,147	274,333	116,066	25	9,775	4,149,346
May, 1933		4,678,013	241,135	102,547	-	10,278	5,031,973
June, 1933		3,578,681	238,018	83,196	-	9,299	3,909,194
July, 1933		4,315,897	366,357	139,453	142	67,118	4,888,967
T O T A L		92,226,304	4,373,203	1,687,799	721	125,206	98,413,233

		SHIPMENTS - VESSEL - RAIL					
Aug. 1932	- Vessel	3,603,166	121,691	25,278	-	-	3,750,135
	- Rail	14,782	5,627	1,215	-	-	21,624
Sept. 1932	- Vessel	5,106,594	273,336	70,776	-	-	5,450,706
	- Rail	3,458	-	-	-	-	3,458
Oct. 1932	- Vessel	11,818,313	143,632	67,529	-	-	12,029,474
	- Rail	1,000	-	-	-	-	1,000
Nov. 1932	- Vessel	12,323,710	508,127	78,011	-	197	12,910,045
	- Rail	66	-	-	-	-	66
Dec. 1932	- Vessel	12,513,137	690,539	263,118	-	-	13,466,794
	- Rail	399	-	-	-	-	399
Jan. 1933	- Vessel	10,570,802	221,008	107,639	-	-	10,899,449
	- Rail	2,000	-	-	-	-	2,000
Feb. 1933	- Vessel	9,286,279	473,420	123,740	-	-	9,883,439
	- Rail	-	-	Nil	-	-	-
Mar. 1933	- Vessel	9,006,588	398,551	317,153	-	-	9,722,292
	- Rail	-	2,635	-	-	-	2,635
Apr. 1933	- Vessel	5,694,355	211,001	55,221	-	-	5,960,577
	- Rail	3,098	-	3,920	-	-	7,018
May, 1933	- Vessel	4,726,019	769,725	132,222	-	-	5,627,966
	- Rail	-	-	Nil	-	-	-
June, 1933	- Vessel	4,175,951	396,396	26,221	-	-	4,598,568
	- Rail	-	1,823	-	-	-	1,823
July, 1933	- Vessel	2,653,316	217,893	67,666	-	-	2,938,875
	- Rail	-	862	-	142	-	1,004
T O T A L - Vessel		91,478,230	4,425,319	1,334,574	-	197	97,238,320
- Rail		24,803	10,947	5,135	142	-	41,027

1911

10

100.00

100.00

100.00

100.00

100.00

100.00

100.00

100.00

100.00

100.00

100.00

100.00

100.00

100.00

100.00

100.00

100.00

100.00

100.00

100.00

100.00

100.00

100.00

100.00

Receipts and Shipments of Grain at Victoria for the twelve months ending July, 1933.

	WHEAT	OATS	BARLEY	FLAXSEED	RYE	TOTAL
B U S H E L S						
RECEIPTS - RAIL						
October, 1932	437,087	917	-	-	-	438,004
November, 1932	490,213	371	-	-	-	490,584
December, 1932	191,638	422	-	-	-	192,060
January, 1933	26,190	-	-	-	-	26,190
March, 1933	142,716	-	-	-	-	142,716
April, 1933	340,761	-	-	-	-	340,761
May, 1933	37,836	-	-	-	-	37,836
T O T A L	1,666,441	1,710	-	-	-	1,668,151

SHIPMENTS - VESSEL						
August, 1932	41,796	-	-	-	-	41,796
September, 1932	272,831	-	-	-	-	272,831
October, 1932	32,421	-	-	-	-	32,421
November, 1932	187,662	-	-	-	-	187,662
February, 1933	289,666	-	-	-	-	289,666
March, 1933	280,934	-	-	-	-	280,934
May, 1933	454,021	-	-	-	-	454,021
June, 1933	377,115	-	-	-	-	377,115
Rail	1,000	235	-	-	-	1,235
July, 1933	-	19,388	-	-	-	19,388
T O T A L Vessel	1,936,446	19,388	-	-	-	1,955,834
Rail	1,000	235	-	-	-	1,235

Receipts and Shipments of grain at Prince Rupert for the twelve months ending July, 1933.

PRINCE RUPERT ELEVATOR - RECEIPTS - RAIL						
August, 1932	26	-	-	-	-	26
November, 1932	60,066	-	-	-	-	60,066
December, 1932	37,917	-	-	-	-	37,917
May, 1933	14	-	-	-	-	14
T O T A L	98,023	-	-	-	-	98,023

SHIPMENTS - VESSEL - RAIL						
August, 1932 - Rail	226	-	-	-	-	226
September, 1932 - Vessel	300,033	-	-	-	-	300,033
Rail	-	6,470	-	-	-	6,470
October, 1932 - Vessel	377,813	-	-	-	-	377,813
April, 1933 - Rail	-	59	-	-	-	59
June, 1933 - Vessel	298,667	-	-	-	-	298,667
July, 1933 - Rail	-	529	-	-	-	529
T O T A L - Vessel	976,513	-	-	-	-	976,513
Rail	226	7,058	-	-	-	7,284

Receipts and Shipments of Grain at Churchill for the twelve months ending July, 1933.

RECEIPTS - RAIL						
August, 1932	195,680	-	-	-	-	195,680
September, 1932	405,505	-	-	-	-	405,505
October, 1932	2,161,362	-	-	-	-	2,161,362
November, 1932	107,569	-	-	-	-	107,569
T O T A L	2,870,116	-	-	-	-	2,870,116

SHIPMENTS - VESSEL						
August, 1932	727,713	-	-	-	-	727,713
September, 1932	1,471,992	-	-	-	-	1,471,992
October, 1932	536,324	-	-	-	-	536,324
T O T A L	2,736,029	-	-	-	-	2,736,029

EXPORTS OF CANADIAN GRAIN AND WHEATFLOUR FOR THE MONTH AND THE TWELVE MONTHS ENDING
JULY, 1933 and 1932

	July 1933	July 1932	Twelve months ending July, 1933	Twelve Months ending July, 1932
<u>W H E A T</u>				
<u>B U S H E L S</u>				
To U. S. (Direct)	64,668	-	304,976	4,473,293
To United Kingdom and orders				
Via U. S. Ports (Indirect)	5,031,164	5,331,861	54,751,714	45,849,312
" Can. Atl. Sbd. Ports (Direct)	2,871,190	3,600,132	40,652,827	18,725,812
" " Pac. " "	2,469,880	2,926,798	58,912,269	36,444,260
" Churchill	-	-	2,144,926	544,770
To Other Countries -				
Via U. S. Ports (Direct)	-	8,706	47,608	2,842,354
" Can. Atl. Sbd. Ports (Direct)	4,701,767	6,321,051	45,159,195	35,452,316
" " Pac. " "	1,234,863	1,431,676	37,572,040	38,471,265
" Churchill	-	-	591,013	-
T O T A L BUSHEL	16,373,532	19,620,224	240,136,568	182,803,382
V A L U E \$	12,302,679	11,209,663	134,221,486	109,545,288

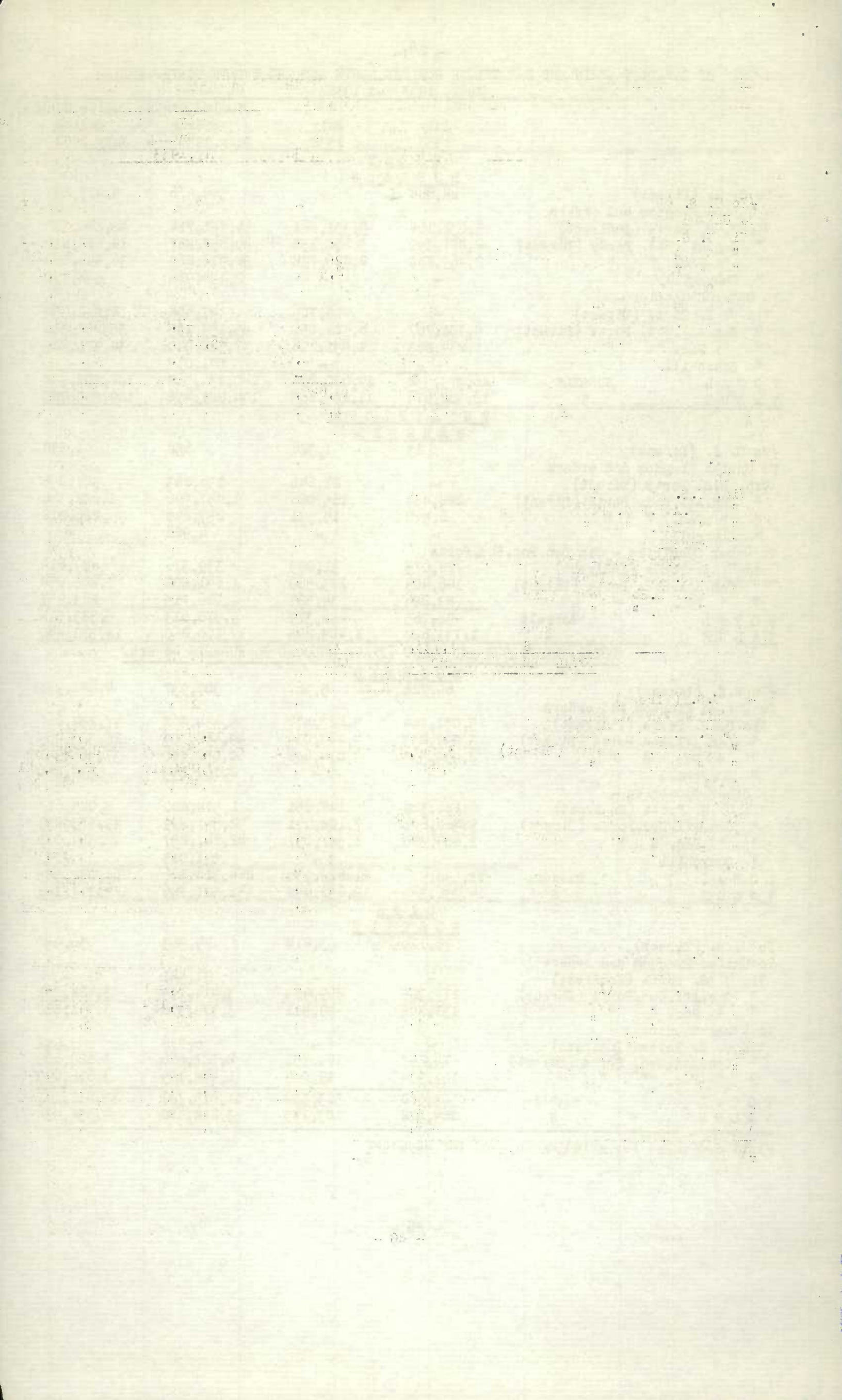
<u>W H E A T F L O U R</u>				
<u>B A R R E L S</u>				
To U. S. (Direct)	13	1,326	658	1,930
To United Kingdom and orders				
Via U. S. Ports (Direct)	-	21,248	156,243	307,855
" Can. Atl. Sbd. Ports (Direct)	228,454	165,086	1,957,596	1,688,366
" " Pac. " "	6,590	19,531	253,298	226,818
" Churchill	-	-	4,926	-
To Other Countries - Via Can. Pac. Sbd. Ports				
Via U. S. Ports (Indirect)	28,073	31,099	339,376	489,614
" Can. Atl. Sbd. Ports (Direct)	146,409	173,560	1,641,801	1,805,054
" " Pac. " "	83,826	34,529	1,016,715	863,957
T O T A L Barrels	492,765	446,379	5,370,613	5,383,594
V A L U E \$	1,733,688	1,443,295	17,100,260	18,571,840

TOTAL WHEATFLOUR AND WHEAT (FLOUR REDUCED TO BUSHEL 4 1/2 Brl.)

<u>B U S H E L S</u>				
To U. S. (Direct)	64,726	5,967	307,937	4,481,978
To United Kingdom and orders				
Via U. S. Ports (Indirect)	5,031,164	5,427,477	55,454,808	47,234,660
" Can. Atl. Sbd. Ports (Direct)	3,899,233	4,343,019	49,462,009	26,323,969
" " Pac. " "	2,499,535	3,014,688	60,052,110	37,464,941
" Churchill	-	-	2,167,093	544,260
To Other Countries -				
Via U. S. Ports (Indirect)	126,329	148,651	1,574,800	5,045,617
" Can. Atl. Sbd. Ports (Direct)	5,360,607	7,102,071	52,547,299	43,575,059
" " Pac. " "	1,609,380	1,587,057	42,147,257	42,359,071
" Churchill	-	-	591,013	-
T O T A L Bushels	18,590,974	21,628,930	264,304,326	207,029,555
V A L U E \$	14,036,307	12,652,958	151,321,746	128,117,128

<u>O A T S</u>				
<u>B U S H E L S</u>				
To U. S. (Direct)	76,124	3,214	79,363	36,940
To United Kingdom and orders				
Via U. S. Ports (Indirect)	-	-	31,441	-
" Can. Atl. Sbd. Ports (Direct)	117,305	269,964	3,414,194	3,428,061
" " Pac. " "	131,302	49,411	3,374,378	3,391,820
To Other Countries -				
Via U. S. Ports (Indirect)	-	-	6,776	7,982
" Can. Atl. Sbd. Ports (Direct)	74,247	171,751	2,721,460	3,129,609
" " Pac. " "	101,904	19,044	1,448,185	3,616,699
T O T A L Bushels	501,382	513,384	11,075,797	13,611,111
V A L U E \$	164,572	183,745	3,218,480	4,652,496

Included wheat for grinding in bond for exports.



	July 1933	July 1932	12 Months ending July, 1933	12 Months ending July, 1932
<u>BARLEY</u>				
<u>BUSHEL</u>				
To U. S. (Direct)	-	21	-	9,322
To United Kingdom and orders -				
Via U. S. Ports (Indirect)	-	-	129,058	1,711,788
" Can. Atl. Sbd. Ports (Direct)	100,042	386,797	3,328,348	2,187,889
" " Pac. " "	79,334	23,131	1,287,647	859,038
To Other Countries -				
Via U. S. Ports (Indirect)	-	-	-	-
Via Can. Atl. Sbd. Ports (Direct)	150,000	1,277,509	635,895	7,778,071
" " Pac. " "	625	1,042	10,451	992,117
TOTAL Bushels	330,001	1,688,500	5,391,399	13,538,225
VALUE \$	143,316	780,766	2,231,024	6,006,145

	July 1933	July 1932	12 Months ending July, 1933	12 Months ending July, 1932
<u>RYE</u>				
<u>BUSHEL</u>				
To U. S. (Direct)	200,000	-	200,000	207
To United Kingdom and orders -				
Via U. S. Ports (Indirect)	-	-	521,684	2,599,024
" Can. Atl. Sbd. Ports (Direct)	17,143	-	145,911	125,380
" " Pac. " "	-	8,000	-	10,000
To Other Countries -				
Via U. S. Ports (Indirect)	-	-	-	-
Via Can. Atl. Sbd. Ports (Direct)	-	2,432,942	1,998,563	6,188,692
" " Pac. " "	-	40,000	200	123,835
TOTAL Bushels	217,143	2,480,942	2,866,358	9,047,138
VALUE \$	167,392	1,279,346	1,335,397	4,489,152

	July 1933	July 1932	12 Months ending July, 1933	12 Months ending July, 1932
<u>FLAXSEED (Sowing and n.o.p.)</u>				
<u>BUSHEL</u>				
To U. S. (Direct)	-	-	717,605	245,763
To United Kingdom and orders -				
Via U. S. Ports (Indirect)	-	-	27,957	-
" Can. Atl. Sbd. Ports (Direct)	-	-	48,829	4,872
To Other Countries -				
Via U. S. Ports (Indirect)	-	-	-	-
" Can. Atl. Sbd. Ports (Direct)	-	-	-	-
" " Pac. " "	-	-	-	-
TOTAL Bushels	-	-	794,391	250,635
VALUE \$	-	-	702,514	281,111

	July 1933	July 1932	12 Months ending July, 1933	12 Months ending July, 1932
<u>BRAN, SHORTS, ETC.</u>				
<u>C W T.</u>				
To U. S. (Direct)	344,826	42,340	1,087,261	1,263,343
To United Kingdom and orders -				
Via U. S. Ports (Indirect)	-	3,920	58,182	18,220
" Can. Atl. Sbd. Ports (Direct)	9,223	165,100	688,477	373,448
" " Pac. " "	11,193	39,410	648,149	134,286
To Other Countries -				
Via U. S. Ports (Indirect)	-	1,000	1,928	17,490
" Can. Atl. Sbd. Ports (Direct)	4,243	5,938	69,550	59,663
" " Pac. " "	1,980	640	14,015	12,923
TOTAL Cwt.	371,465	258,348	2,567,562	1,879,373
VALUE \$	274,738	190,489	1,786,106	1,207,470

	July 1933	July 1932	12 Months ending July, 1933	12 Months ending July, 1932
<u>OATMEAL AND ROLLED OATS</u>				
<u>C W T.</u>				
To U. S. (Direct)	-	-	-	1,552
To United Kingdom and orders -				
Via U. S. Ports (Indirect)	512	4,371	21,566	70,341
" Can. Atl. Sbd. Ports (Direct)	30,856	21,762	386,058	464,973
" " Pac. " "	-	6,100	87,933	60,406
To Other Countries -				
Via U. S. Ports (Indirect)	175	17	4,578	37,280
" Can. Atl. Sbd. Ports (Direct)	3,755	5,125	38,106	80,715
" " Pac. " "	1,625	537	13,430	10,588
TOTAL Cwt.	36,923	37,912	551,671	725,855
VALUE \$	143,065	134,132	1,980,220	2,421,298

Account Name	Debit	Credit	Balance
To Balance			100.00
To Cash		50.00	150.00
To Cash		50.00	200.00
To Cash		50.00	250.00
To Cash		50.00	300.00
To Cash		50.00	350.00
To Cash		50.00	400.00
To Cash		50.00	450.00
To Cash		50.00	500.00
To Cash		50.00	550.00
To Cash		50.00	600.00
To Cash		50.00	650.00
To Cash		50.00	700.00
To Cash		50.00	750.00
To Cash		50.00	800.00
To Cash		50.00	850.00
To Cash		50.00	900.00
To Cash		50.00	950.00
To Cash		50.00	1000.00
To Cash		50.00	1050.00
To Cash		50.00	1100.00
To Cash		50.00	1150.00
To Cash		50.00	1200.00
To Cash		50.00	1250.00
To Cash		50.00	1300.00
To Cash		50.00	1350.00
To Cash		50.00	1400.00
To Cash		50.00	1450.00
To Cash		50.00	1500.00
To Cash		50.00	1550.00
To Cash		50.00	1600.00
To Cash		50.00	1650.00
To Cash		50.00	1700.00
To Cash		50.00	1750.00
To Cash		50.00	1800.00
To Cash		50.00	1850.00
To Cash		50.00	1900.00
To Cash		50.00	1950.00
To Cash		50.00	2000.00
To Cash		50.00	2050.00
To Cash		50.00	2100.00
To Cash		50.00	2150.00
To Cash		50.00	2200.00
To Cash		50.00	2250.00
To Cash		50.00	2300.00
To Cash		50.00	2350.00
To Cash		50.00	2400.00
To Cash		50.00	2450.00
To Cash		50.00	2500.00
To Cash		50.00	2550.00
To Cash		50.00	2600.00
To Cash		50.00	2650.00
To Cash		50.00	2700.00
To Cash		50.00	2750.00
To Cash		50.00	2800.00
To Cash		50.00	2850.00
To Cash		50.00	2900.00
To Cash		50.00	2950.00
To Cash		50.00	3000.00
To Cash		50.00	3050.00
To Cash		50.00	3100.00
To Cash		50.00	3150.00
To Cash		50.00	3200.00
To Cash		50.00	3250.00
To Cash		50.00	3300.00
To Cash		50.00	3350.00
To Cash		50.00	3400.00
To Cash		50.00	3450.00
To Cash		50.00	3500.00
To Cash		50.00	3550.00
To Cash		50.00	3600.00
To Cash		50.00	3650.00
To Cash		50.00	3700.00
To Cash		50.00	3750.00
To Cash		50.00	3800.00
To Cash		50.00	3850.00
To Cash		50.00	3900.00
To Cash		50.00	3950.00
To Cash		50.00	4000.00
To Cash		50.00	4050.00
To Cash		50.00	4100.00
To Cash		50.00	4150.00
To Cash		50.00	4200.00
To Cash		50.00	4250.00
To Cash		50.00	4300.00
To Cash		50.00	4350.00
To Cash		50.00	4400.00
To Cash		50.00	4450.00
To Cash		50.00	4500.00
To Cash		50.00	4550.00
To Cash		50.00	4600.00
To Cash		50.00	4650.00
To Cash		50.00	4700.00
To Cash		50.00	4750.00
To Cash		50.00	4800.00
To Cash		50.00	4850.00
To Cash		50.00	4900.00
To Cash		50.00	4950.00
To Cash		50.00	5000.00

Exports of Grain by Canadian Inland Ports of Exit for the twelve months ending July, 1933.

	Destin- ation	WHEAT	OATS	BARLEY		RYE	TOTAL	WHEAT FLOUR Barrels
				B U S H E L S				
McAdam Jct, N.B.	U.S.	-	60	-	-	-	60	-
Woodstock, N. B.	U.S.	205	775	-	-	-	980	21
Athelston, Que.	U.S.	164	12	-	-	-	176	-
Coatscook, Que.	U.K.	772,832	-	-	-	-	772,832	-
	U.S.	-	242	-	-	-	242	-
Lake Megantic, Que.	U.S.	-	39	-	-	-	39	-
St. Armand, Que.	U.K.	-	-	-	-	-	-	8,662
	U.S.	-	2,380	-	-	-	2,380	-
	O.C.	-	-	-	-	-	-	4,907
St. John's, Que.	U.K.	-	-	-	-	-	-	5,533
	U.S.	-	55,548	-	-	-	55,548	-
	O.C.	-	-	-	-	-	-	3,200
Sutton, Que.	U.K.	-	-	-	-	-	-	28,519
	O.C.	12,000	-	-	-	-	12,000	4,740
	U.S.	-	18,514	-	-	-	18,514	8
Bridgeburg, Ont.	U.K.	-	-	-	-	-	-	1,500
	U.S.	20	-	-	-	-	20	-
	O.C.	-	5,082	-	-	-	5,082	6,223
Cobourg, Ont.	O.C.	-	-	-	-	-	-	19,811
Fort Erie, Ont.	U.K.	-	-	-	-	-	-	7,534
	U.S.	100	-	-	-	-	100	-
	O.C.	-	1,694	-	-	-	1,694	35,903
Fort William, Ont.	U.K.	18,369,581	19,914	-	-	430,451	18,819,946	17,142
	U.S.	-	-	-	-	108,750	108,750	-
	O.C.	26,828	-	-	-	-	26,828	10,102
Niagara Falls, Ont.	U.K.	3,342	-	-	-	-	3,342	31,757
	U.S.	-	-	-	-	-	-	620
	O.C.	333	-	-	-	-	333	246,107
Port Arthur, Ont.	U.K.	35,605,959	11,527	129,058	-	91,233	35,837,777	-
	U.S.	-	-	-	-	91,250	91,250	-
	O.C.	8,438	-	-	-	-	8,438	-
Prescott, Ont.	U.K.	-	-	-	-	-	-	2,142
	O.C.	9	-	-	-	-	9	806
Toronto, Ont.	O.C.	-	-	-	-	-	-	375
Welland, Ont.	U.K.	-	-	-	-	-	-	53,454
	O.C.	-	-	-	-	-	-	7,202
	U.S.	209,952	-	-	-	-	209,952	-
Windsor, Ont.	U.S.	-	-	-	-	-	-	4
Via U.S. Ports Indirect								
To U.K.		54,751,714	31,441	129,058	-	521,684	55,433,897	156,243
To O.C.		47,608	6,776	-	-	-	54,384	339,376
TOTAL U.K. & O.C.		54,799,322	38,217	129,058	-	521,684	55,488,281	495,619
TOTAL U.S.		210,441	77,570	-	-	200,000	488,011	653
TOTAL INLAND PORTS		55,009,763	115,787	129,058	-	721,684	55,976,292	496,272

Exports of Grain by Ports over Rail and Highway from Fort Francis to Pacific Coast for the twelve months ending July, 1933.

Brandon, Man.	U.S.	22	-	-	-	-	22	-
Emerson, Man.	U.S.	94,466	-	-	-	-	94,466	-
North Portal, Man.	U.S.	40	-	-	-	-	40	3
Regina, Sask.	U.S.	7	-	-	-	-	7	-
Lethbridge, Alta.	U.S.	-	95	-	-	-	95	-
TOTAL SOUTH BY RAIL								
AND HIGHWAY		94,535	95	-	-	-	94,630	3
GRAND TOTAL FOR CANADA								
		240,136,568	10,575,798	5,391,399	2,866,358	258,970,123	5,370,613	

EXPORTS OF GRAIN BY CANADIAN PORTS FOR THE TWELVE MONTHS ENDING JULY, 1933.

Destination	WHEAT	OATS	BARLEY	RYE	TOTAL	WHEAT FLOUR	
						Barrels	
B U S H E L S							
Charlottetown, P.E.I.	O.C.	-	202,746	44	-	202,790	5
Summerside, P.E.I.	O.C.	-	1,950	-	-	1,950	-
Halifax, N.S.	U.K.	523,528	1,800	-	-	525,328	152,693
	O.C.	1,159,105	159,093	-	-	1,318,198	368,935
Port Hawkesbury N.S.	O.C.	-	4,000	-	-	4,000	6,500
North Sydney, N.S.	O.C.	1,141	9,405	-	-	10,546	57,764
Saint John, N.B.	U.K.	3,755,898	78,324	98,630	34,225	3,967,077	330,722
	U.S.	-	-	-	-	-	1
	O.C.	3,144,337	8,932	-	43,314	3,196,583	239,509
Gaspe, Que.	O.C.	-	3,150	-	-	3,150	-
Montreal, Que.	U.K.	24,731,542	3,334,070	3,229,718	111,686	31,407,016	1,472,753
	O.C.	33,625,769	2,310,216	635,851	1,899,543	38,471,379	968,537
Quebec, Que.	U.K.	1,215,488	-	-	-	1,215,488	1,428
	U.S.	-	-	-	-	-	1
	O.C.	4,166,133	21,968	-	-	4,188,101	551
Sorel, Que.	U.K.	10,426,371	-	-	-	10,426,371	-
	O.C.	3,062,710	-	-	55,706	3,118,416	-
New Westminster, B.C.	U.K.	626,401	144,939	53,900	-	825,240	38,116
	U.S.	-	1,698	-	-	1,698	-
	O.C.	216,987	-	-	-	216,987	18,431
Vancouver, B.C.	U.K.	55,674,226	3,210,051	1,233,747	-	60,118,024	215,182
	O.C.	36,992,358	1,448,185	10,451	200	38,451,194	998,184
Victoria, B.C.	U.K.	1,935,163	19,388	-	-	1,954,551	-
	O.C.	62,695	-	-	-	62,695	100
Prince Rupert, B.C.	U.K.	676,479	-	-	-	676,479	-
	O.C.	300,000	-	-	-	300,000	-
Via Canadian Atl. Ports	U.K.	40,652,827	3,414,194	3,328,348	145,911	47,541,280	1,957,596
	U.S.	-	-	-	-	-	2
	O.C.	45,159,195	2,721,460	635,895	1,998,563	50,515,113	1,641,801
Total Canadian Atl. Seaboard Ports		85,812,022	6,135,654	3,964,243	2,144,474	98,056,393	3,599,399
Churchill	U.K.	2,144,926	-	-	-	2,144,926	4,926
	O.C.	591,013	-	-	-	591,013	-
Total Churchill		2,735,939	-	-	-	2,735,939	4,926
Via Canadian Pac. Ports	U.K.	58,912,269	3,374,378	1,287,647	-	63,574,294	253,298
To	U.S.	-	1,698	-	-	1,698	-
	O.C.	37,572,040	1,448,185	10,451	200	39,030,876	1,016,715
Total Can. Pac. Ports		96,484,309	4,824,261	1,298,098	200	102,606,868	1,270,013
Total Can. Atlantic, Pacific Ports, and Churchill - To	U.K.	101,710,022	6,788,572	4,615,995	145,911	113,260,500	2,215,820
	U.S.	-	1,698	-	-	1,698	2
	O.C.	83,322,248	4,169,645	646,346	1,998,763	90,137,002	2,658,516
GRAND TOTAL VIA CANADIAN SEABOARD PORTS		185,032,270	10,959,915	5,262,341	2,144,674	203,399,200	4,874,338

FLAX SEED

Port of Exit	Destination	Month of July		Twelve Months ending	
		1933	July, 1933	July, 1933	July, 1933
B U S H E L S					
Saint John,	N.B.	U.K.	-	-	8,860
Montreal	Que.	U.K.	-	-	39,969
Fort William	Ont.	U.K.	-	-	14,410
		U.S.	-	-	200,722
Port Arthur,	Ont.	U.K.	-	-	13,547
		U.S.	-	-	516,315
Sarnia,	Ont.	U.S.	-	-	20
Emerson,	Man.	U.S.	-	-	548
T O T A L S		U.K.	-	-	77,354
		U.S.	-	-	717,037
GRAND TOTAL		U.K. & U. S.	-	-	794,391

Table with multiple columns containing numerical values and text entries, including names like 'The National Bank' and 'The Commercial Bank'.

Table with multiple columns containing numerical values and text entries, including 'U.S.' and 'U.K.'.

Exports, of Bran, Shorts, Etc. and Oatmeal and Rolled Oats for the twelve months ending
July, 1933

Destination			Bran, Shorts Middlings	Oatmeal and Rolled Oats
			Cwt.	Cwt.
Charlottetown,	P. E. I.	O. C.	81	3
Halifax,	N. S.	U. K.	20,941	39,712
		O. C.	28,769	7,828
North Sydney	N. S.	O. C.	570	771
Saint John,	N. B.	U. K.	12,537	85,699
		O. C.	414	5,910
Saint Stephen,	N. B.	U. S.	40	-
Montreal,	Que.	U. K.	639,879	250,247
		O. C.	39,686	23,590
Quebec,	Que.	U. K.	12,880	2,560
		U. S.	16	-
		O. C.	30	4
New Westminster,	B. C.	U. K.	8,840	-
Vancouver,	B. C.	U. K.	639,309	87,933
		O. C.	14,015	13,430
		U. S.	4,000	-
Victoria,	B. C.	U. S.	500	-
TOTALS	(Canadian	U. K.	1,334,386	466,151
	(Seaboard	U. S.	4,556	-
	(Ports	O. C.	83,565	51,536

CANADIAN INLAND PORTS OF EXIT

Woodstock,	N. B.	U. S.	649	-
Athelston,	Que.	U. S.	2,113	-
Coaticooks,	Que.	U. S.	10,000	-
Rock Island,	Que.	U. S.	1,689	-
St. Armand,	Que.	U. K.	2,240	-
		U. S.	202,616	-
St. John's,	Que.	U. K.	4,420	-
		U. S.	236,084	-
Sutton,	Que.	U. K.	32,370	4,514
		U. S.	256,430	-
		O. C.	-	858
Bridgeburg,	Ont.	U. S.	500	-
Brockville,	Ont.	U. S.	80	-
Cobourg,	Ont.	O. C.	-	402
Cornwall,	Ont.	U. S.	2,000	-
Fort Erie,	Ont.	U. K.	610	-
		U. S.	205,182	-
Fort William,	Ont.	U. S.	82,883	-
Niagara Falls,	Ont.	U. K.	3,360	16,327
		U. S.	27,058	-
		O. C.	628	3,318
Prescott,	Ont.	U. K.	-	725
		U. S.	32,415	-
Sarnia,	Ont.	U. S.	940	-
Toronto,	Ont.	U. S.	22,000	-
Welland,	Ont.	U. K.	15,182	-
		O. C.	1,300	-
TOTAL INLAND PORTS		U. K.	58,182	21,566
		U. S.	1,082,639	-
		O. C.	1,928	4,578

RAILWAY AND HIGHWAY FROM PORT FRANCIS TO PACIFIC COAST

Winnipeg,	Man.	U. K.	2,240	7,840
	B. C.	U. S.	62	-
Brandon Forks	B. C.	U. S.	4	-
TOTAL SOUTH BY RAIL		U. K.	2,240	7,840
		U. S.	66	-
		U. K. & U. S.	2,306	7,840
GRAND TOTALS			2,567,562	551,671

1917

1917

1917

1917

1917

1917

1917

1917

1917

1917

1917

1917

1917

1917

1917

1917

1917

1917

1917

1917

1917

1917

1917

1917

1917

1917

1917

1917

1917

1917

1917

1917

1917

1917

1917

1917

1917

1917

1917

1917

1917

1917

1917

1917

1917

1917

1917

1917

1917

1917

1917

1917

1917

1917

1917

1917

1917

1917

1917

1917

1917

1917

1917

1917

1917

1917

1917

1917

1917

1917

INSPECTIONS - WESTERN DIVISION

Month of July, 1933 and 1932

	Month of July, 1933	12 Months ending July, 1933	12 Months ending July, 1932
<u>B U S H E L S</u>			
<u>WHEAT</u>			
One Man. Hard	736	17,701	17,304
One Man. Northern	7,496	100,614	44,230
Two Man. Northern	3,281	63,344	64,098
Three Man. Northern	344	7,599	19,576
Four Man. Northern	354	3,637	5,089
Number five	220	1,913	2,159
Number six	39	474	949
Feed	6	53	763
Smutty	55	938	1,397
Tough	95	8,122	21,854
Damp	-	316	128
Rejected	90	904	577
No. 4 Special	-	-	30
No. 5 Special	-	-	17
No. 6 Special	-	-	7
Sample Wheat	10	78	96
No. 1 Amber Durum	318	5,621	2,348
No. 2 Amber Durum	169	2,225	2,180
No. 3 Amber Durum	49	561	414
No. 4 Amber Durum	-	11	21
No. 5 Amber Durum	-	-	1
No. 6 Amber Durum	-	-	1
Rejected Amber Durum	17	302	401
Smutty Amber Durum	9	96	356
Tough Amber Durum	-	9	37
Damp Amber Durum	-	1	3
No. 1 Red Durum	-	-	2
No. 1 White Spring	13	83	107
No. 2 White Spring	8	80	101
No. 3 White Spring	9	46	52
Smutty White Spring	-	2	-
Tough White Spring	-	2	5
Rejected White Spring	3	17	6
No. 1 Mixed Wheat	4	20	24
No. 2 Mixed Wheat	1	3	2
No. 3 Mixed Wheat	5	28	11
No. 4 Mixed Wheat	2	5	-
No. 5 Mixed Wheat	12	85	33
No. 6 Mixed Wheat	-	5	-
Tough Mixed Wheat	-	2	6
Smutty Mixed Wheat	1	7	4
Rejected Mixed Wheat	1	4	6
No. 1 A. R. W.	2	53	62
No. 2 A. R. W.	2	50	29
No. 3 A. W.	1	10	7
Rejected A. W.	-	-	1
Smutty A. W.	-	15	11
Tough, A. W.	-	2	4
T O T A L S	(Cars 13,352 (Bushels 19,861,367)	215,038 325,197,667	184,509 266,504,800

11,857 Cars graded No. 3 Northern, and better or 93.17%.

189,258 Cars graded No. 3 Northern and better or 92.01%.

145,208 Cars graded No. 3 Northern and better or 81.45%.

MEMORANDUM

Date:

TO: [Illegible] FROM: [Illegible] SUBJECT: [Illegible]

[Illegible text]

[Illegible text]

[Illegible text]

[Illegible text]

[Illegible text]

[Illegible text]

[Illegible text]

[Illegible text]

[Illegible text]

[Illegible text]

[Illegible text]

[Illegible text]

[Illegible text]

INSPECTIONS - WESTERN DIVISION
 Month of July, 1933 and 1932

		Month of July, 1933	12 Months ending July, 1933	12 Months ending July, 1932.
B U S H E L S				
<u>OATS</u>	No. 1 C. W.	1	47	144
	No. 2 C. W.	538	4,820	5,339
	No. 3 C. W.	409	3,653	5,376
	Extra No. 1 Feed	40	269	1,022
	No. 1 Feed	319	2,460	5,532
	No. 2 Feed	99	749	1,609
	No. 3 Feed	9	73	156
	Special Feed	--	49	126
	Rejected	4	8	29
	Mixed Feed	8	88	16
	Tough	19	418	1,481
	Damp	--	9	12
	Sample Oats	--	--	5
TOTAL OATS	(Cars	1,446	12,643	20,847
	(Bushels	2,994,280	26,924,154	43,427,408
<u>BARLEY</u>	No. 2 C. W.) Six Row	--	2	10
	No. 3 C. W.)	328	2,328	1,457
	No. 1 C. W.)	--	--	2
	No. 2 C. W.) Two Row	--	3	3
	No. 3 Ex. C. W.)	15	153	119
	No. 2 C. W.)	--	1	1
	No. 3 Ex. C. W.) Trebi	4	60	137
	No. 3 C. W.	445	3,654	4,455
	No. 4 C. W.	188	1,046	1,266
	No. 5 C. W.	85	462	557
	No. 6 C. W.	7	47	91
	Rejected	1	4	8
	Sample	--	--	9
	Tough	21	326	881
	Damp	--	33	10
TOTAL BARLEY	(Cars	1,094	8,119	9,006
	(Bushels	1,683,393	12,563,584	13,863,746
<u>FLAXSEED</u>	No. 1 C. W.	281	1,433	1,517
	No. 2 C. W.	6	19	128
	No. 3 C. W.	7	20	21
	No. 4 C. W.	2	3	4
	Rejected	--	--	2
	Tough	1	44	74
	Sample	1	5	4
	Damp	--	--	7
TOTAL FLAXSEED	(Cars	298	1,524	1,757
	(Bushels	292,001	1,714,409	1,925,338
<u>RYE</u>	No. 1 C. W.	5	60	112
	No. 2 C. W.	216	999	1,317
	No. 3 C. W.	186	754	479
	No. 4 C. W.	4	23	43
	Rejected	2	3	2
	Ergoty	16	59	41
	Tough	10	64	431
	Sample	--	1	1
	Damp	--	3	2
TOTAL RYE	(Cars	439	1,966	2,388
	(Bushels	592,852	2,700,306	3,181,723
<u>MIXED GRAIN</u>	No. 1	6	39	42
	No. 2	5	16	9
	No. 3	9	42	79
	Tough	--	7	27
	Rejected	--	--	7
	Sample	--	1	2
	Damp	--	2	--
TOTAL	(Cars	20	107	166
	(Bushels	20,000	107,000	166,000
<u>SCREENINGS</u>	(Cars	1	11	22
	(Bushels	1,000	11,000	22,000
<u>BUCKWHEAT</u>	(Cars	--	3	4
	(Bushels	--	3,000	4,000

March 21 1914

(20)

March 21

3

1914

INSPECTIONS - WESTERN DIVISION

Month of July, 1933 and 1932

		Month of July 1933	12 Months ending July, 1933	12 Months ending July, 1932
RECAPITULATION				
Wheat	(Cars	13,352	215,038	184,509
	(Bush.	19,861,367	325,197,667	266,504,800
Oats	(Cars	1,446	12,643	20,847
	(Bush.	2,994,290	26,924,154	43,427,428
Barley	(Cars	1,094	8,119	9,006
	(Bush.	1,683,393	12,563,584	13,863,746
Flaxseed	(Cars	298	1,524	1,757
	(Bush.	292,001	1,714,409	1,925,338
Rye	(Cars	439	1,966	2,388
	(Bush.	592,852	2,702,306	3,181,723
Mixed Grain	(Cars	20	107	166
	(Bush.	20,000	107,000	166,000
Screenings	(Cars	1	11	22
	(Bush.	1,000	11,000	22,000
Buckwheat	(Cars	-	3	4
	(Bush.	-	3,000	4,000
T O T A L S	(Cars	16,650	239,411	218,699
	(Bush.	25,444,903	369,223,120	329,095,035
(Canadian Pacific Railway (Winnipeg and Other Points		8,470	121,858	94,765
Canadian Northern Railway		7,765	111,244	112,799
Great Northern Railway, Duluth		59	372	24
Northern Alberta Railway		356	5,937	11,111
T O T A L S		16,650	239,411	218,699

+ Increase
- Decrease % Increase

(Canadian Pacific Railway (Winnipeg and Other Points	+ 27,093	
Canadian Northern Railway	- 1,555	
Great Northern Railway, Duluth	+ 348	9.47%
Northern Alberta Railway	- 5,174	
TOTAL INCREASE	+ 20,712	

RECAPITULATION - COMPARATIVE FIGURES FOR THE 12 MONTHS ENDING JULY, 1907-08 to July, 1932-33

	Total Number of Cars
1907-08	67,912
1908-09	88,218
1909-10	111,853
1910-11	101,417
1911-12	176,163
1912-13	188,645
1913-14	196,704
1914-15	128,169
1915-16	335,905
1916-17	245,421
1917-18	175,558
1918-19	133,829
1919-20	150,386
1920-21	200,741
1921-22	230,685
1922-23	280,698
1923-24	361,470
1924-25	223,181
1925-26	328,638
1926-27	305,903
1927-28	353,253
1928-29	413,508
1929-30	188,906
1930-31	248,114
1931-32	218,699
1932-33	239,411

1

2

3

4

5

6

7

8

9

10

11

12

13

14

15

16

17

18

19

20

21

22

23

24

25

26

27

28

29

30

31

32

33

34

35

36

37

38

39

40

41

42

43

44

45

46

47

48

49

50

51

52

53

54

55

56

57

58

59

60

61

62

63

64

65

66

67

68

69

70

71

72

73

74

75

76

77

78

79

80

81

82

83

84

85

86

87

88

89

90

91

92

93

94

95

96

97

98

99

100

101

102

103

104

105

106

107

108

109

110

111

112

113

114

115

116

117

118

119

120

121

122

123

124

125

126

127

128

129

130

131

132

133

134

135

136

137

138

139

140

141

142

143

144

145

146

147

148

149

150

151

152

153

154

155

156

157

158

159

160

161

162

163

164

165

166

167

168

169

170

171

172

173

174

175

176

177

178

179

180

181

182

183

184

185

186

187

188

189

190

191

192

193

194

195

196

197

198

199

200

STOCKS OF GRAIN IN CANADA AT THE END OF THE CROP YEAR JULY, 31, 1933

The Dominion Bureau of Statistics has collected and compiled data showing stocks of grain in Canada at the close of the Crop Year July 31, 1933. The quantities in farmers' hands are estimated from a report of the Crop Correspondents to the Agricultural Branch of the Bureau. Stocks are as follows:

	WHEAT	OATS	BARLEY B U S H E L S	FLAXSEED	RYE	TOTAL
Public, Semi-Public Terminals and Private Elevators-Fort William & Port Arthur	61,351,463	3,307,847	2,802,967	766,923	3,304,284	71,533,484
Mill and Mill Elevators	6,008,904	1,161,631	1,335,957	69,198	11,683	8,567,373
Interior Terminal Elevators Western Division	2,003,654	42,379	4,324	92	224	2,050,673
Vancouver - New Westminster Elevators	9,351,581	627,593	501,164	1,116	117,898	10,599,352
Prince Rupert & Victoria Elevators	2,947	-	-	-	-	2,947
Churchill, Manitoba	2,430,283	10,329	-	-	-	2,440,612
Country Elevators & Private Terminals	71,846,187	5,194,155	2,203,384	157,745	902,451	80,303,922
In Transit - Railways	5,190,550	628,750	343,812	76,258	127,923	6,367,293
In Flour Mills - Eastern Division	3,198,366	961,775	109,861	1,824	12,855	4,284,681
In Eastern Elevators	34,171,909	1,714,231	865,646	88,719	1,180,809	38,021,314
In Eastern Elevators Afloat	3,834,344	605,068	49,207	-	-	4,488,619
In Farmers Hands	12,340,000	27,701,000	3,102,000	1,17,700	156,600	43,317,300
T O T A L	211,740,188	42,044,758	11,338,322	1,179,575	5,814,727	272,117,670
T O T A L- 1 9 3 2	131,844,806	29,849,319	7,195,655	1,321,358	5,418,715	175,629,853

Year	Month	Day	Event	Location	Notes
1880	Jan	1
1880	Jan	2
1880	Jan	3
1880	Jan	4
1880	Jan	5
1880	Jan	6
1880	Jan	7
1880	Jan	8
1880	Jan	9
1880	Jan	10
1880	Jan	11
1880	Jan	12
1880	Jan	13
1880	Jan	14
1880	Jan	15
1880	Jan	16
1880	Jan	17
1880	Jan	18
1880	Jan	19
1880	Jan	20
1880	Jan	21
1880	Jan	22
1880	Jan	23
1880	Jan	24
1880	Jan	25
1880	Jan	26
1880	Jan	27
1880	Jan	28
1880	Jan	29
1880	Jan	30
1880	Jan	31

EXPORTS OF GRAIN, WHEATFLOUR AND MILLFEED BY COUNTRIES OF DESTINATION, JULY, 1933 AND THE TWELVE MONTHS ENDING JULY, 1933

	W H E A T		W H E A T F L O U R		O A T S		B A R L E Y	
	12 Mos.		12 Mos.		12 Mos.		12 Mos.	
	July 1933 Bush.	July 1933 Bush.	July 1933 Bbls.	July 1933 Bbls.	July 1933 Bush.	July 1933 Bush.	July 1933 Bush.	July 1933 Bush.
Aden	-	-	40	311	-	-	-	-
Africa								
British East	-	-	-	150	-	-	-	-
British South	3253	149170	53	4835	-	-	-	-
British West	-	-	-	50	-	-	-	-
Alaska	-	-	-	2	-	-	-	-
Azores and Madeira	-	-	611	1614	-	-	-	-
Belgian Congo	-	-	75	3304	-	-	-	-
Belgium	911755	17511631	309	2288	58825	1191739	-	129167
Bermuda	-	257	1698	25406	19419	273789	-	-
Bolivia	-	126934	-	-	-	-	-	-
British Guiana	-	-	5305	69818	5365	66226	-	-
British Honduras	-	-	1230	22096	138	1592	-	-
British India	-	-	-	5	-	-	-	-
British Oceania	-	-	-	30	-	-	-	-
British West Indies								
Barbados	-	20	4866	72164	10762	132006	-	-
Jamaica	440	5360	20831	317695	3795	39856	-	-
Trinidad	10	115	17563	206417	9247	142124	-	-
Other Br. W. Indies	-	54	14446	160801	1289	24087	-	-
Brazil	-	-	-	338	-	-	-	-
Canary Islands	-	-	251	2046	-	-	-	-
Chili	-	18433	-	1102	-	-	-	-
China	-	7792969	5836	147623	-	4428	-	-
Colombia	20000	193917	-	-	-	-	-	-
Costa Rica	-	-	900	11379	-	-	-	-
Cuba	-	-	7015	40104	-	15	-	-
Czecho-Slovakia	-	-	-	16854	-	-	-	-
Denmark	168533	2257217	11638	116895	-	-	-	-
Dutch East Indies	-	-	833	9618	-	-	-	-
Dutch Guiana	-	-	385	3370	-	-	-	-
Dutch West Indies	-	-	1525	6863	-	-	-	-
Ecuador	-	-	279	589	-	-	-	-
Egypt	-	-	386	7068	-	-	-	-
Finland	-	134400	4548	55900	-	-	-	-
France	958228	12223736	-	1060	-	249744	-	-
French Africa	-	88563	-	1012	-	-	-	-
French Guiana	-	-	205	16084	-	-	-	-
French West Indies	-	-	-	13709	-	-	-	-
Gambia	-	-	50	1337	-	-	-	-
Germany	723962	10501736	-	68451	-	47036	-	16667
Gold Coast	-	-	1671	20618	-	-	-	-
Great Britain	10372234	156461736	235044	2372063	249107	6820013	179376	4745053
Greece	-	845790	-	310	-	-	-	-
Guatemala	-	4269	1651	12601	-	-	-	-
Hayti	-	-	2011	8828	-	-	-	-
Hong Kong	-	-	20791	238942	2511	34033	625	10451
Honduras	-	373	846	6748	-	-	-	-
Iceland	-	-	-	1012	-	-	-	-
Irish Free State	351838	1459737	43442	243523	-	-	140000	152500
Italy	261212	2930501	7926	85188	-	38881	-	-
Japan	451900	4239402	24000	150727	-	-	-	-
Liberia	-	-	58	1253	-	-	-	-
Malta	57333	102133	286	7529	-	-	-	-
Morocco	-	9	-	184	-	-	-	-
Netherlands	1522977	17616333	847	48656	42353	1501025	10000	337475
Newfoundland	36	1606	32627	317006	22131	413903	-	86
New Zealand	20000	170835	2083	64023	-	-	-	-
Nicaragua	-	-	-	50	-	-	-	-
Nigeria	-	-	21	1686	-	-	-	-
Norway	227686	2759640	443	176381	-	-	-	-
Panama	-	-	1006	8369	-	-	-	-
Peru	93334	529899	37	530	-	-	-	-
Palestine	-	-	57	4909	-	-	-	-

Date	Particulars	Debit	Credit	Balance
1911				
1912				
1913				
1914				
1915				
1916				
1917				
1918				
1919				
1920				
1921				
1922				
1923				
1924				
1925				
1926				
1927				
1928				
1929				
1930				
1931				
1932				
1933				
1934				
1935				
1936				
1937				
1938				
1939				
1940				
1941				
1942				
1943				
1944				
1945				
1946				
1947				
1948				
1949				
1950				
1951				
1952				
1953				
1954				
1955				
1956				
1957				
1958				
1959				
1960				
1961				
1962				
1963				
1964				
1965				
1966				
1967				
1968				
1969				
1970				
1971				
1972				
1973				
1974				
1975				
1976				
1977				
1978				
1979				
1980				
1981				
1982				
1983				
1984				
1985				
1986				
1987				
1988				
1989				
1990				
1991				
1992				
1993				
1994				
1995				
1996				
1997				
1998				
1999				
2000				

EXPORTS OF GRAIN, WHEATFLOUR AND MILLFEED BY COUNTRIES OF DESTINATION, JULY, 1933 AND THE TWELVE MONTHS ENDING JULY, 1933 (Concluded).

	W H E A T		W H E A T F L O U R		O A T S		B A R L E Y	
	July 1933 Bush.	12 Mos. July 1933 Bush.	July 1933 Ebls.	12 Mos. July 1933 Ebls.	July 1933 Bush.	12 Mos. July 1933 Bush.	July 1933 Bush.	12 Mos. July 1933 Bush.
Philippine Island	-	167	7598	98543	-	10358	-	-
Poland and Danzig	-	-	25	318	-	-	-	-
Porto Rico	-	-	-	400	106	106	-	-
Portuguese Africa	8400	8417	1725	11177	-	-	-	-
Russia	-	169333	-	-	-	-	-	-
Siam	-	-	-	100	-	-	-	-
San Domingo	-	-	1044	5764	-	-	-	-
Sierre Leone	-	-	1778	14925	-	-	-	-
South Rhodesia	-	-	586	897	-	-	-	-
Spanish Africa	-	-	-	1177	-	-	-	-
St. Pierre & Miquelon	-	275	25	3493	210	5467	-	-
Straits Settlements	-	-	13	448	-	-	-	-
Sweden	155733	1526625	338	3479	-	6	-	-
Syria	-	-	-	2169	-	-	-	-
United States	64668	304976	13	658	76124	79363	-	-
Venezuela	-	-	3895	47541	-	-	-	-
TOTAL, July, 1933	16373532	240136568	492765	5370613	501382	11075797	330001	5391399
June, 1933	16998672	-	544507	-	812703	-	87423	-
July, 1932	19620224	-	446379	-	513384	-	1688500	-
12 Months ending July, 1932	182803382	-	5383594	-	13611111	-	13538225	-
12 Months ending July, 1933	240136568	-	5370613	-	11075797	-	5391399	-

	Rye Bushels	Flaxseed Bushels	Bran Shorts and Middlings Cwt..	Oatmeal and Rolled Oats Cwt.	Screenings Cwt.
Bermuda	-	-	2,918	54	-
British Guiana	-	-	130	151	-
British East Africa	-	-	-	61	-
British Strait Settlements	-	-	-	150	-
British India	-	-	-	633	-
British South Africa	-	-	-	777	-
Barbados)	-	-	25	24	-
Jamaica) British West Indies	-	-	361	181	-
Trinidad)	-	-	-	68	-
Other)	-	-	68	101	-
Finland	-	-	-	110	-
Great Britain	17,143	-	20,416	31,368	-
Hong Kong	-	-	300	1,620	-
Japan	-	-	-	5	-
Newfoundland	-	-	741	811	-
Netherlands	-	-	-	662	-
Panama	-	-	1,680	-	-
Portuguese Africa	-	-	-	36	-
St. Pierre	-	-	-	1	-
United States	200,000	-	344,826	-	133,342
TOTALS July, 1933	217,143	-	371,465	36,923	133,342
June, 1933	-	200,971	227,714	33,528	17,163
July, 1932	2,480,942	-	258,348	37,912	28,882
12 Months ending July, 1932	9,047,138	250,635	1,879,373	725,855	734,724
12 Months ending July, 1933	2,866,358	794,391	2,567,562	551,671	487,565



1010674869

Faint, mostly illegible text and markings, possibly bleed-through from the reverse side of the page. Some faint words like "STATISTICS" and "BIBLIOTHÈQUE" are visible.