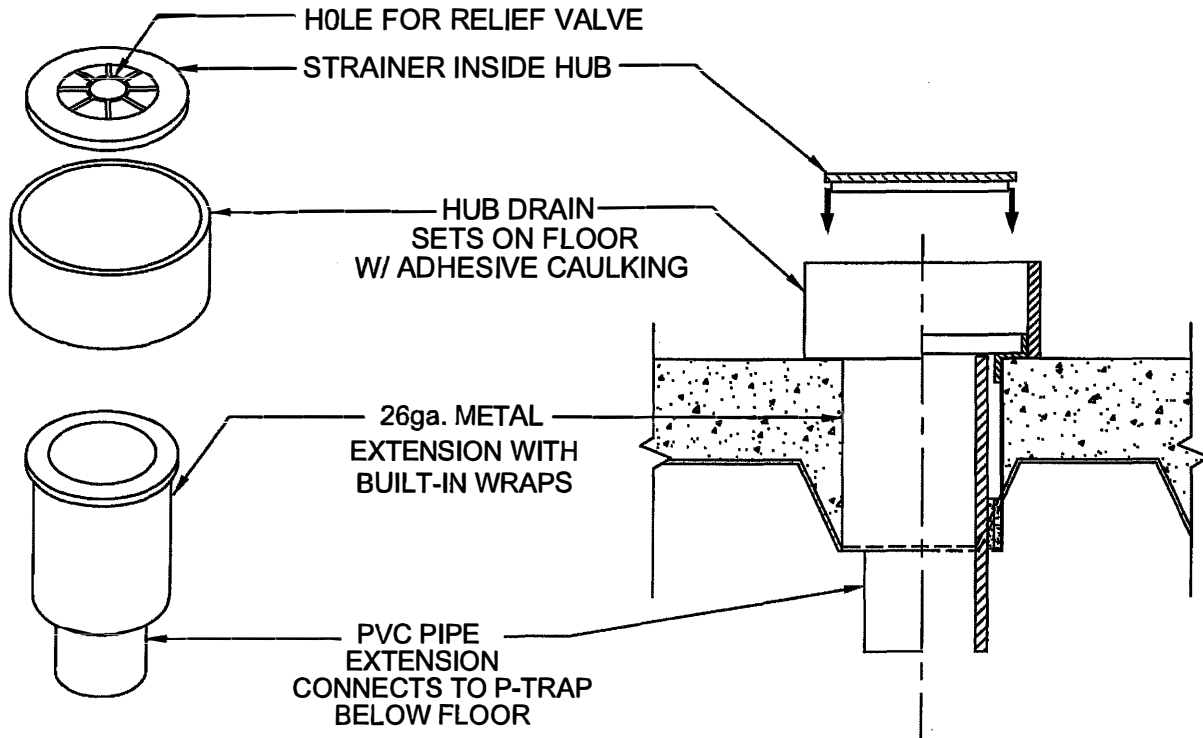


# HUB DRAIN STUB

CONCRETE ON CORRUGATED METAL DECK  
FOR FLOORS



SEE DRAWINGS C-6320-A & B FOR INSTALLATION IN  
POURED IN PLACE CONCRETE FLOORS.

Size	Part No.	Description	Price
2"	P23FHDRS-CH-SSW	2" X 3" Hub Drain w/ recess strainer & wrap	29.35
2"	P23FHDS-CH-SSW	2" X 3" Hub Drain w/ flush strainer & wrap	29.35
2"	P23FHD-CH-SSW	2" X 3" Hub Drain & wrap	26.05
2"	P24FHDRS-CH-SSW	2" X 4" Hub Drain w/ recess strainer & wrap	37.85
2"	P24FHDS-CH-SSW	2" X 4" Hub Drain w/ flush strainer & wrap	37.85
2"	P24FHD-CH-SSW	2" X 4" Hub Drain & wrap	25.30

NOTE: The hub portion can be cut down into the concrete floor w/ 4" or 5" core if necessary



W.H. Directory Reference 99 Edition  
Firestop Device  
W.H. Design No. PS/PH 120-07  
F Rating 2 Hrs.



**PROSET**<sup>®</sup>  
**SYSTEMS**  
FIRESTOP PENETRATOR™

DATE :  
05-31-21

DRG . NO .  
C-6120-DCp