



Catalog 2015

Innovative products with focus on design and functionality
Produced and designed in Denmark

CABINET SYSTEM

CONTENT

- 3 [Minirack](#)
- 7 [Multirack NEXT MOVE](#)
- 10 [Macrorack SOHO](#)
- 14 [Multirack NEXT STEP](#)
- 20 [SS-serie](#)
- 22 [Optiorack server rack](#)
- 24 [IP 55 floor rack](#)
- 25 [19" Frame](#)
- 26 [Wall brackets](#)
- 27 [Wall boxes](#)
- 28 [ODF-rack and ODF-frame](#)
- 30 [Server room \(CUBE\)](#)
- 39 [Accessories](#)
- 58 [Contact us – we will be glad to speak to you!](#)

Useful tips

- Click at the chosen product in the table of content - hyperlinks will send you directly to the product.
- Use our website for more technical data and pictures.
- Call us at +45 7027 3626 – we will be glad to assist you.

Remember that Cabinet System's strong side is to produce customer oriented solutions. Therefore we can not show all our solutions in this catalog.

MINIRACK

Minirack can either be delivered as standard in black or delivered in optional RAL-color.

Minirack is a unique product with great functions, high stability – and is delivered either assembled or as flat pack.

Delivered in 3 depths with either plate-, or glasdoor – or as a new option – glass door with foil.

Minirack is a professional wall rack with focus on easy installation, cable management and a good design.



Chose your Minirack in your own color – or order in elegant black color. Minirack fits in all environments.

Chose height, depth and door type

6-10-15U



400-500-600mm

Specifications

- 19" profiles in front. Easy to adjust in depth.
- Door in glass, glass/with foil or plate door. Handle in door can be changed to system lock (like RUKO, GEGE etc.) The doors can after your choice be installed as left- or right hinged.
- Top- and bottom plate has cable entry placed just up to the wall. This function does that no cables have to be bended.
- Delivered as standard in black (RAL 9005). Can against extra price be delivered in other RAL colors.
- Good cable support in the rack. Special holes for strips/velcro are placed at the cable entry and 4 places in the rear plate.
- Side plates can be removed to give good access from the side.
- Complete door in very robust material. You can as extra order a plate door with 3 point locking system. For this door there is a special handle prepared for later installation of RUKO/GEGE locks.



Minirack is now also available in depth 600.



Schedule with over view of variants, type numbers, weight etc.

(WxHxD)	U	Plate door	Glass door	Glass door /foil	Depth	Weight
541x323x404	6	62501	62401	62507	Max. 345	12,0 kg
		5709832 045252	5709832 045177	5709832 046075		
541x500x404	10	62502	62402	62508	Max. 345	15,0 kg
		5709832 045269	5709832 045184	5709832 046082		
541x723x404	15	62503	62403	62509	Max. 345	19,0 kg
		5709832 045269	5709832 045191	5709832 046099		

(WxHxD)	U	Plate door	Glass door	Glass door /foil	Depth	Weight
541x323x504	6	62504	62404	62510	Max. 445	13,5 kg
		5709832 045283	5709832 045207	5709832 046105		
541x500x504	10	62505	62405	62511	Max. 445	17,5 kg
		5709832 045290	5709832 045214	5709832 046112		
541x723x504	15	62506	62406	62512	Max. 445	21,5 kg
		5709832 045306	5709832 045221	5709832 046129		

(WxHxD)	U	Plate door	Glass door	Glass door /foil	Depth	Weight
541x323x604	6	62516	62517	62518	Max. 545	15,0 kg
		5709832 046334	5709832 046341	5709832 046358		
541x500x604	10	62519	62520	62521	Max. 545	19,5 kg
		5709832 046365	5709832 046372	5709832 046389		
541x723x604	15	62522	62523	62524	Max. 545	22,5 kg
		5709832 046396	5709832 046402	5709832 046143		

U	3 point plate door
6	96206
10	5709832 067575
15	96207
	5709832 067582

MULTIRACK NEXT MOVE

Design og outstanding functionality!

Multirack NEXT MOVE is truly a fantastic rack, which with its design, can be used in all environments. With 3 different doors to choose between, is it possible to give the installation your own touch.

The basic idea of Multirack NEXT MOVE, is the professional approach to the solution of cable management, ventilation, combined with unique access to the installation.

Multirack NEXT MOVE is very special when it comes to functions. We will show you some on the following pages.

Recently, the series has been upgraded with the possibility to buy doors with 3 point system. The doors all have swing handles prepared for system locks.



Smart design and outstanding functionality

New racks delivered 800mm wide and extra large racks on 22U

Smart details and great functions....



Good ergonomic and unlimited access:

1. Mount the rear plate on the wall. 2. Install the cabinet on the rear plate and start your installation work. 3. Mount side plates and door.

Solid rack with several locking points:

The rack can be locked from inside. With 4 locking points on each side, the rack is very strong. You can upgrade the standard door and order a 3 point locking door.

Unique ventilation:

The rack offers great possibilities for ventilation. Passive ventilation through holes in side plates and bottom/top gives a good air flow. In top/bottom there can be installed 2 fans for active ventilation.

It's very unique that the construction has no corner profiles, and that wall mounting is so easy...



Top- and bottom plates have air holes for passive ventilation. Same holes can be used for installing of up to 2 fans.



Cable entry is prepared for cables or cable trays in 130x62mm or 180x62mm.



19" profiles can be adjusted stepless and has clearly marked numbers (U).

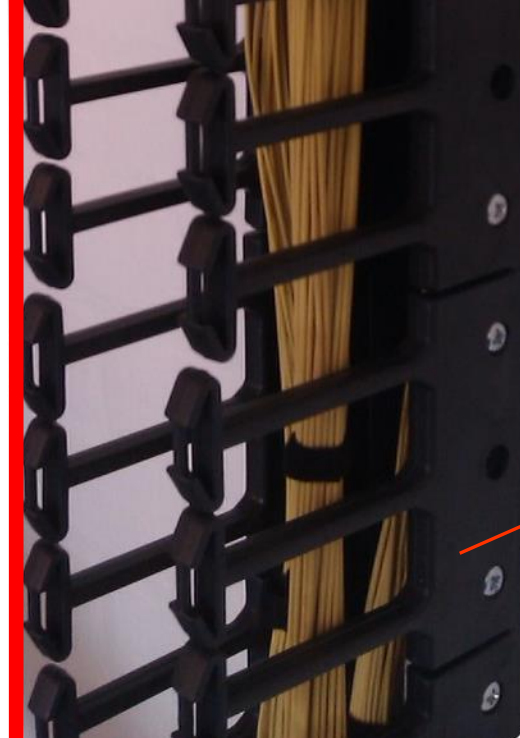


The rack has key holes and makes the installing on the rear plate easy.

Detachable side plates and door gives unlimited access.

Specifications

- State of art design with no corner profiles: gives unlimited access and makes the installing easy. Side plates can be opened as doors or easy removed. Side plates can be locked from inside with a smart red locking device.
- Easy mounting on a wall. First step consists of installing the rear plate on the wall, thereafter, it is very easy to mount the cabinet without door and side plates on the rear plate. A very easy method that reduces heavy lifts.
- The rear plate's function is also to support the cables. Several holes are made to easily fasten the cables. The rear plate can also separate cables. It's possible to run cables behind and in front of the rear plate.
- Top- and bottom plate has 2 perforated areas for passive ventilation. It's also possible to install up to 2 fans.
Cable entry is an open hole without edges. This function makes the cables pass without bending the cables. The cable entry is further prepared for cable trays at 130x62mm or 180x62mm.
- 19" profiles can be adjusted stepless and have clearly visible U-marks.
- As standard the rack are delivered in RAL 9005 (black).
- Strong construction which allows high weight.



*In all standard racks with width=800,
there are space for finger management system...*

Width 800 is prepared for installation of finger management system.



Width 600:
10, 15 og 20U in depth 500 and 600.



Width 800:
10, 15 and 20U in depth 600.



Extra large : 22U and depth 800:
In both width 600 and 800 there are 19" profiles in front and back.

Width 800 with extra space in the sides for Finger management

Schedule with over view of variants, type numbers, weight etc.

(WxHxD)	U	Plate door	Glass door	Glass door/ foil	Depth	Weight
600x470x500	10	70101s	70102s	70103s	Max. 455	22,0 kg
		5709832 045696	5709832 045702	5709832 045719		
600x690x500	15	70201s	70202s	70203s	Max. 455	27,5 kg
		5709832 045726	5709832 045733	5709832 045740		
600x920x500	20	70301s	70302s	70303s	Max. 455	33,0 kg
		5709832 045757	5709832 045764	5709832 045771		
(WxHxD)	U	Plate door	Glass door	Glass door/foil	Depth	Weight
600x470x600	10	72101s	72102s	72103s	Max. 555	24,5 kg
		5709832 045788	5709832 045795	5709832 045801		
600x690x600	15	72201s	72202s	72203s	Max. 555	30,0 kg
		5709832 045818	5709832 045825	5709832 045832		
600x920x600	20	72301s	72302s	72303s	Max. 555	35,5 kg
		5709832 045849	5709832 045856	5709832 045863		
(WxHxD)	U	Plate door	Depth	Weight	Prepared for finger management	
800x470x600	10	72410s	Max. 555	29,0 kg	Yes	
		5709832 046280				
800x690x600	15	72415s	Max. 555	34,5 kg	Yes	
		5709832 046297				
800x920x600	20	72420	Max. 555	40,0 kg	Yes	
		5709832 046303				
(WxHxD)	U	Plate door	Depth	Weight	Prepared for finger management	
600x1010x800	22	72422s	Max. 755	43,0 kg	No	
		5709832 046310				
800x1010x800	22	73422s	Max. 755	47,0 kg	Yes	
		5709832 046327				
Finger management for wide 800 racks		Type /EAN		3 points doors only width 600		Type /EAN
10U with lid, for one side	95333		5709832 067919		96200	
	95334					
15U with lid, for one side	5709832 067926		5709832 067599		96201	
	95335					
20U with lid, for one side	5709832 067933		5709832 067605		96202	
	95336					
22U with lid, for one side	5709832 067940		5709832 067612			

Smart design and great functions...



10" rack with
unique functions

MACRORACK, 10"

Macrorack – SOHO is the perfect solution for small installations. With a unique design Macrorack SOHO fits in all modern office environments, wherever it has to be installed on a wall, stays on a table or have to be installed hanging under a table. Macrorack is delivered complete with special wall bracket for installation on a wall and is delivered in environmentally friendly packing.

As accessories you can order a patch panel, a cable entry list, a shelf and a blind plate.

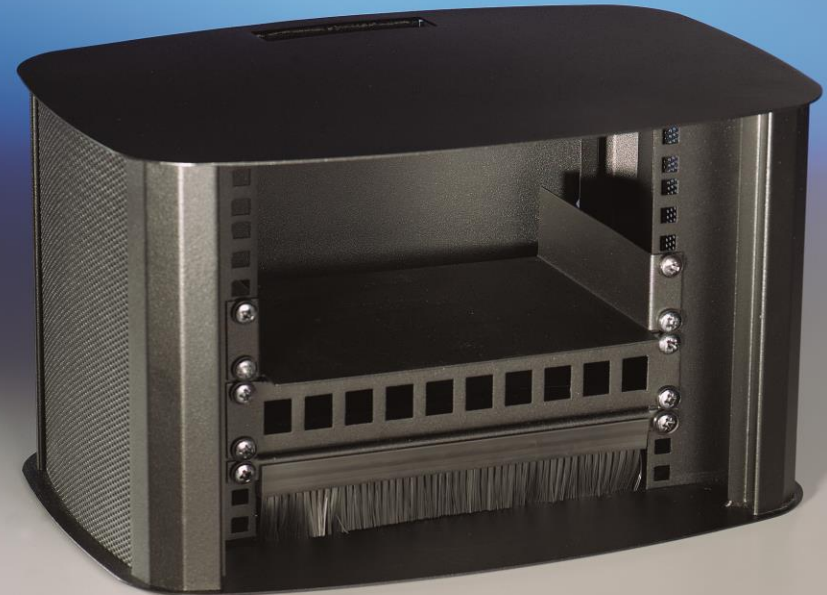
Macrorack SOHO can be delivered in other colors. We have delivered our Macrorack in special colors to several projects for fiber installation in f. ex. apartments and houses with several small installations.

Contact Cabinet System and let us have a dialogue about your project.



Schedule with details...

Racks	U	Type	WxHxD	Depth	Weight
Complete Macrorack with wall bracket and accessories Delivered with patch panel, cable entry list, 10" shelf, blind plate and mounting clips.	5	60018 5709832 025223	396x235x284	200	6 kg
Macrorack without accessories Delivered with wall bracket	5	60017 5709832 025216	396x235x284	200	5 kg
Accessories	U	Type			
Patch panel, 8 ports (15,0x19,0mm) Fits AMP, Key-Stone, Solar Plus	1	95133 5709832 066080			
Patch panel, 8 ports (17,2x18,4mm) Fits Schneider Electric, cat. 5E og 6.	1	95151 5709832 066431			
Patch panel, 8 ports (19,0x20,5mm)	1	95152 5709832 066448			
Cable entry list Delivered in RAL 9005, black	1	95134 5709832 066097			
Shelf, 10", D=167 Delivered in RAL 9005, black	1	95135 5709832 066103			
Blind plate Delivered in RAL 9005, black	1	95136 5709832 066110			
1 set mounting clips, black (4pcs. screws, 4 pcs. clips, 4 pcs. PVC-washers)	1	95137 5709832 066127			



Macrorack can be delivered in all colors – ask us for a price!

IP 55 OUTDOOR...



Weatherproof rack
with good ventilation

Outdoor rack...

IP55 outdoor is developed for outdoor environments with special focus on having a dry and good ventilated installation.

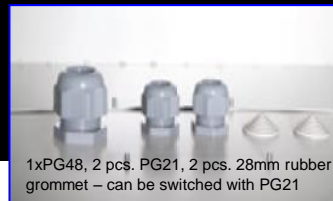
There is ventilation through air gills in both sides and trough the top plate. It is possible to install fans inside the side plates and also inside the top plate.

IP55 seals keeps water and dust out of the rack. In the bottom plate there is PG-cable entries.

The material is weatherproof and powder painted with epoxy for good lifetime.

IP55 outdoor rack is delivered with swing handle prepared for system locks as f. ex. RUKO. The door has 3 point locking system to prevent vandalism and unauthorized access.

The rack is delivered with 4 strong wall brackets for easy installing on wall. Max. load is 100 kg. IP55 Outdoor is delivered in grey (RAL 7035).



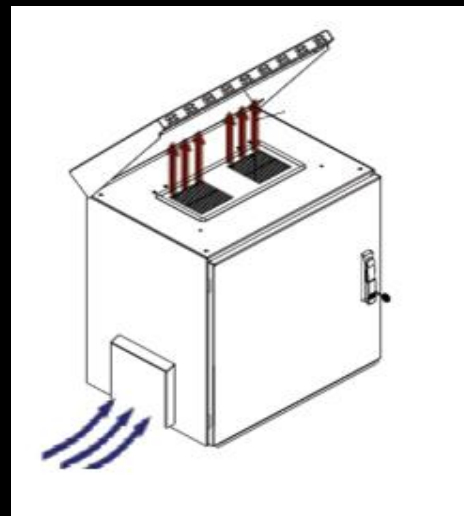
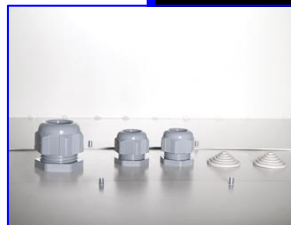
1xPG48, 2 pcs. PG21, 2 pcs. 28mm rubber grommet – can be switched with PG21



Good ventilation and high density grade...

Good possibility for ventilation. There is as standard passive ventilation through the top plate and through ventilation sluces in both sides. There can be installed fans in the sides and in the top plate.

Good ventilation secures correct temperature inside the rack, a dry installation and longer life time of the products.



(WxHxD)	U	Description	Type / EAN	Weight
600x891x600	16	IP55 outdoor w. swing handle for RUKO and 2 pcs. ventilation sluces.	Type 70504 EAN 5709832 046167	49,0 kg

We recommend that you order 1 or 2 fans, and a thermostat – see more under accessories.

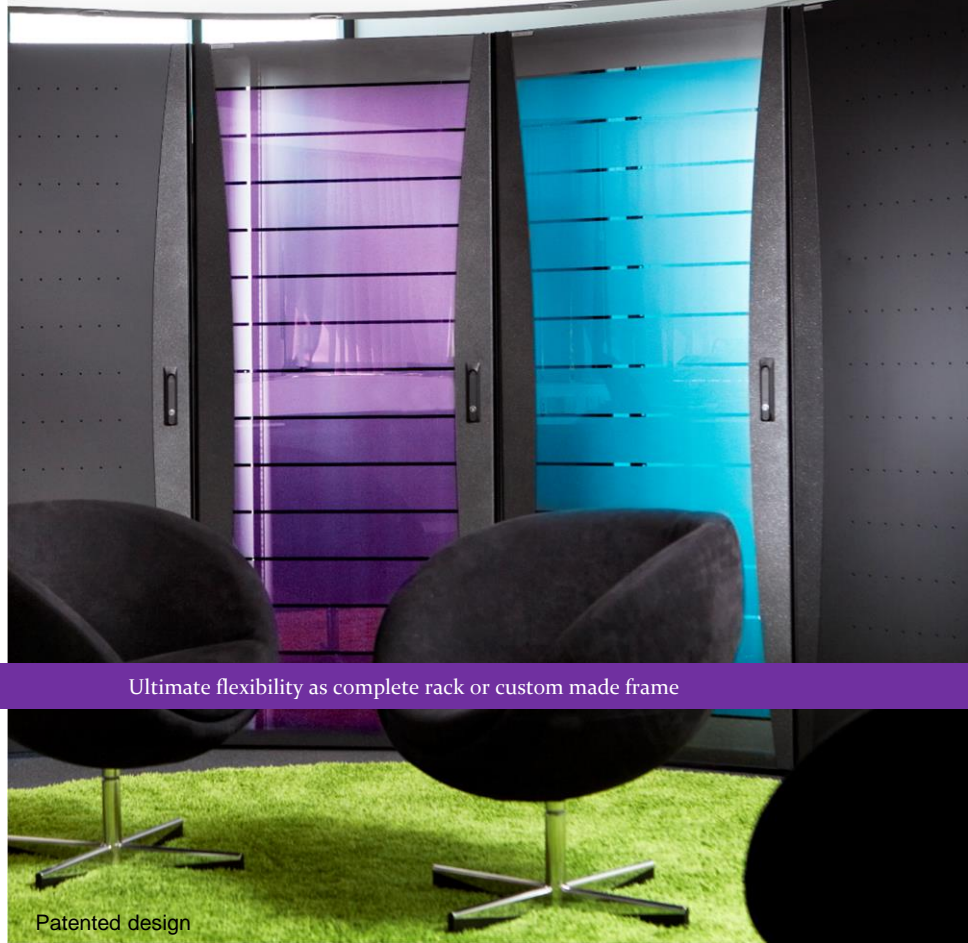
MULTIRACK NEXT STEP...

Outstanding design and functionality!

Multirack NEXT STEP is simply an outstanding rack, which with its design can be placed in all environments. With 4 different types of doors, is it possible to give the installation your own design touch.

Multirack NEXT STEP is unique when it comes to availability. You can order it as open frame or as a complete rack. You can even order it with the number of side plates, doors, cable supports and accessories as you want. We are very flexible and give a high service when it comes to delivering NEXT STEP racks.

Combine your solution with our cable management – then you live up to all norms and standards for a professional installation.



Ultimate flexibility as complete rack or custom made frame

Patented design

Designed by Cabinet System & Hans Petersen

Passion for design

Our passion is to ensure a perfect match between innovative functions and a strong design. With Multirack NEXT STEP this mission has succeeded completely.

The doors is delivered in steel or glass, according to what design you want. The plate door's design has smooth holes to give a better and lighter visual design. And the color has matt black color which gives a visual effect with contrast to the other rack parts.

The glass door is delivered with dark toned glass – or with a foil, which makes a nice transparent design, where you can see the lights from the installation, but not the cables.

A perforated door with special holes makes the largest possible air flow as possible. This is to ensure very good ventilation.

Choose Multirack NEXT STEP from Cabinet System and combine market leading functions with innovative design.

Smart details and great functions.



The top plate has cable entry through a sliding flange, and has further holes in both sides for cable entry a long the sides and finally a hole in front too. Cable entry is made very successfully.

In the sliding flange there is possibility for passive ventilation and for installation of up to 2 pcs. fans.



Multirack NEXT STEP is delivered as standard with adjustable feeds, but can also be delivered with wheels or a plinth. In the plinth there is knock-out holes for cable entry and passive ventilation.



19" profiles with clearly marked units. Easy to adjust inside the rack, without removing the side plates.

As accessories you can order supporters for 19" profiles. This is useful when the rack is heavily loaded. With supporters you can load 800 kg.



Cable supporters can be mounted in the sides or in the rear end.



Cable holders and cable supporters can successfully be combined.



Earth terminal for connection of 6x10m2 and 1x16m2

Schedule with overview of variants, type numbers, weight etc.

(WxHxD)	U	Plate door	Glass door	Glass door w. foil	Depth	Weight
600x1536x600	33	46161s	46162s	46163s	Max. 520	65 kg
		5709832 045634	5709832 045641	5709832 045658		
600x1536x800	33	46181s	46182s	46183s	Max. 725	75 kg
		5709832 045665	5709832 045672	5709832 045689		
600x2000x600	42	46261s	46262s	46263s	Max. 520	75 kg
		5709832 045511	5709832 045528	5709832 045535		
600x2000x800	42	46281s	46282s	46283s	Max. 725	90 kg
		5709832 045542	5709832 045559	5709832 045566		
800x2000x600	42	48261s	48262s	48263s	Max. 520	90 kg
		5709832 045573	5709832 045580	5709832 045597		
800x2000x800	42	48281s	48282s	48283s	Max. 725	105 kg
		5709832 045603	5709832 045610	5709832 045627		
Easy Split variant 800x2000x800	42	48284s	48285s	48286s	Max. 725	110 kg
		5709832 021867	5709832 021874	5709832 021881		

Specifications

- 19" profiles in front and rear, can be adjusted stepless and has clearly visible marks for every U.
- The top plate has in rear a sliding flange for cable entry. In front and in the sides, there are knock-out holes for cable entry / ventilation. Further more there are 2 perforated areas for ventilation. Here it's possible to install up to 2 fans for active ventilation.
- Door in glass or steel. Exclusive swing handle with lock. It's possible to add 3 point locking system as extra. Together with our 6 point locking on the side plates, this rack is made to avoid vandalism.
- Delivered as standard in RAL 9005 (black), with glass door, glass door with foil, plate door or with a extreme perforated plate door for best possible air flow.
- 1 movable cable guide. Can be mounted in rear or in the sides.
- Unique method for opening/locking the side- and rear plate. The side- and rear plate can be opened as a door or easy removed after your wish. This method not only saves cost for locks, it's also a great function.
- Adjustable legs. Can be changed to wheels or a plinth.
- Strong construction which allow high weight.
- Always on stock.

Accessories

Description	Type	EAN
19" profile, 42U	40100s	5709832 045870
19" profile, 33U	40101s	5709832 045887
Side plate, 33U, depth 600	40119s	5709832 045917
Side plate, 33U, depth 800	40121s	5709832 045924
Side plate, 42U, depth 600	40107s	5709832 045931
Side plate, 42U, depth 800	40108s	5709832 045948
Plate door, 33U, width 600	40110s	5709832 045955
Plate door, 42U, width 600	40111s	5709832 045962
Plate door, 42U, width 800	40112s	5709832 045979
Glass door, 33U, width 600	40113s	5709832 045986
Glass door, 42U, width 600	40114s	5709832 045993
Glass door, 42U, width 800	40115s	5709832 046006
Perforated door, 33U, width 600	40168s	5709832 046013
Perforated door, 42U, width 600	40169s	5709832 046020
Perforated door, 42U, width 800	40170s	5709832 046037
Glass door w. foil, 33U, width 600	40116s	5709832 046044
Glass door w. foil, 42U, width 600	40117s	5709832 046051
Glass door w. foil, 42U, width 800	40118s	5709832 046068
Complete kit with 3 point locking system. The system also includes a swing handle with lock prepared for system locks.		
Complete kit for 33U-version	95315	5709832 067629
Complete kit for 42U-version	95316	5709832 067636



800 series with the 4 types of doors. Perforated door showed in grey to better see the holes.



Examples from the 600 wide series and the 33U series.

Experience the multi use with a NEXT STEP rack frame and focus on the specific functions you need...

With a rack frame solution in NEXT STEP you do not need to order all functions.
– you can focus right on the specific functions you wish.
Experience the multi use of a NEXT STEP frame.

- 1). Choose rack frame size in the dimensions you wish.
- 2). Choose number of 19" profiles – do you need 19" profiles in rear?
- 3). Choose number of horizontal cable guides (max 3 in each side/rear).
- 4). Do you need a sliding flange in the top? Sliding flange is used to close properly around the cables and to close the hole in the top plate.
- 5). Do you need a plinth on the frame? The plinth raise the frame 80mm above the floor and can be used to store cable overlength.
- 6). Choose door types and number of side plates. If 2 frames have to be build together, and if there is a wish for using doors, it is necessary to order the assembly kit.
- 7). Choose cable management system and other accessories.

- we deliver your solution installed with the accessories you want.



Choose between following 42U versions: 600x600, 600x800, 800x600 og 800x800, or 33U versions: 600x600, 600x800



Frame with cable management



Choose the specific easy split frame. The frame can with reinstalling of 4 screws, be split into 2 parts. This makes it small and easy to lift into rooms where normal frames can't come in.

Schedule with overview of variants, type numbers, weight etc.

(WxHxD)	U	Depth	Type / EAN	Weight	EasySplit
600x1536x600	33	Max. 520	49506s / 5709832 021829	65 kg	No
600x1536x800	33	Max. 725	49507s / 5709832 021836	75 kg	No
800x1536x600	33	Max. 520	49508s / 5709832 021843	75 kg	No
800x1536x800	33	Max. 725	49509s / 5709832 021850	80 kg	No
600x2000x600	42	Max. 520	49500s / 5709832 021782	75 kg	No
600x2000x800	42	Max. 725	49501s / 5709832 021775	80 kg	No
800x2000x600	42	Max. 520	49502s / 5709832 021799	80 kg	No
800x2000x800	42	Max. 725	49503s / 5709832 021805	85 kg	No
800x2000x800	42	Max. 725	49504s / 5709832 021812	90 kg	Yes

Rack frames for multi use and where complete racks not are needed.

Specifications for rack frames

- 19" profiles in front and rear, can be adjusted step less and has clearly visible marks for every U.
- The top plate has in rear a sliding flange for cable entry. In front and in the sides, there is knock-out holes for cable entry / ventilation. Further more there are 2 perforated areas for ventilation. Here it's possible to install up to 2 fans for active ventilation.
- Delivered as standard in RAL 9005 (black),
- 1 movable cable guide. Can be mounted in rear or in the sides.
- Adjustable legs. Can be changed to wheels or a plinth.
- Strong construction which allow high weight.

SS-rack, SS6, SS8, SS9

Data- & server rack



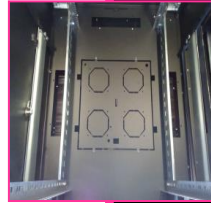
The top plate has cable entry in the sides and in rear.

Top plate is prepared for later installation of up to 4 fans.

Bottom plate has cable entry in the sides and in rear end there is a sliding flange.

Smart vertical cable management channel can be placed between the 19" profiles and the side plates. The cable management channel has a lid with hinge.

Easy to install!
Note: this can only be done in racks 800 wide.



Specifications:

- Delivered in 4 versions, in elegant black color. Inside material in alu zinc.
- Strong construction – can manage up to 600 kg. The SS9 1000 kg.
- 19" profiles in front and rear on all version, and all profiles delivered with clearly visible U-marks.
- 3 pcs. holes for cable entry in top and bottom. 1 long hole in each side and 1 in rear end – the holes makes it possible to enter with cables from the side or from rear end. The holes is also useful for ventilation / airflow.
- Top plate is prepared for later installation of up to 4 fans.
- Choose between plate- or glass door. In server rack versions there are a perforated door in front and plate door in rear. All doors can be opened 130 degrees, and can easily be changed from left hinged to right hinged.
- In SS9 there is perforated door with extreme perforation for best possible air flow.
- Side plates and door is easy detachable under installation and both door and side plates can later be locked.
- Earth kit and unique cable management system can be ordered as accessories.

Schedule with overview of variant, type numbers, weight etc.

Description	Dim. (WxHxD)	U	Type no. / EAN no.	Depth	Weight
SS6 with plate door	600x2000x600	42	45420 5709832 021447	Max. 510	80 kg
SS6 with glass door	600x2000x600	42	45421 5709832 021454	Max. 510	80 kg
SS8 with plate door	800x2000x800	42	45422 5709832 021461	Max. 640	110 kg
SS8 with glass door	800x2000x800	42	45423 5709832 021478	Max. 640	110 kg
Server rack SS9	600x2000x1000	42	47500 5709832 021591	Max. 905	115 kg
Server rack SS9	800x2000x1000	42	47501 5709832 021607	Max. 905	145 kg
Earth kit			45424 5709832 021485		
Vertical cable management	Note: only width 800		45425 5709832 021492		
Lock prepared f. RUKO			81022 5709832 065908		



Extreme perforation for best possible air flow.

OPTIORACK

Server rack

- Delivered in black (RAL 9005). All inside parts are also painted to avoid sharp edges.
- Perforated doors in both ends, with the largest possible perforation to ensure best air flow. The doors have a minor round bend. It gives an exclusive design, but it also gives very high stability at the doors. The doors can easily be lifted off and can open 180 degrees.
- 19" profiles in front with integrated air-guide to ensure that the air not pass on the outside of the 19" profiles. 19" profiles in rear are made with round aluminium rears to avoid sharp edges, when installer works with his arms between side plate and 19" profiles.
The reinforcement of the 19" profiles is constructed so later installation of power panels, cable trays etc. can be done very easy.
- Integrated plinth with knock-out holes that can be used to pass cables between 2 racks.
- Opportunity for later install of vertical cable management, cable trays etc.
- Both the top- and bottom plate has optimal holes for cable entry. Over and above the 19" profiles, there is holes for cable entry. This holes is made so the cabling can go directly in and out the racks without bending the cables inside the racks. The cabling can then run directly through our cable management systems.
- Earth kit can be ordered as accessory.
- Delivered with 100mm high plinth with 4 adjustable legs.

(WxHxD)	U	Description	Type no. / EAN no.	Weight
600x1200x1000	27	Optiorack server rack 600x1200x1000	Type 47510 EAN 5709832 021676	65 kg
800x1200x1000	27	Optiorack server rack 800x1200x1000	Type 47511 EAN 5709832 021683	80 kg
600x2000x1200	44	Optiorack server rack 600x2000x1200	Type 47512 EAN 5709832 021690	120 kg
800x2000x1200	44	Optiorack server rack 800x2000x1200	Type 47513 EAN 5709832 021706	150 kg





42U / 2000 high
2 versions: width 600 and 800, depth 1200



27U / 1200 high
2 versions: width 600 and 800, depth 1000



Top plate with unique cable entry
Knock out holes with brushes, in front and rear. Over each 19" profile there is a unique hole which ensure that cables do not need to be bended more than necessary.



Round rears for safety.
In rear end the 19" profiles is supported with nice round aluminium rears. This ensure that nobody get cut in the arms. The rears is also good as cable guides.

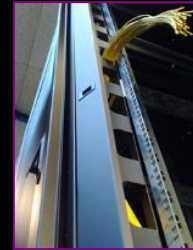
High end server rack

OPTIORACK

Based on our Optiorack solution, Cabinet System supply customer oriented solutions 100% according to the customers wishes for dimensions, colors and functions.

Optiorack is a steel rack with nice rounded corner profiles in aluminium. It's mainly used in projects, where price and quantity is crucial.

Optiorack is a sovereign rack with a good design, which can be customized your wishes for dimensions, colors and functions. We say "if you can think of it – we can make it!"



The air guide ensure that the cold air does not pass on the wrong side.

Special racks

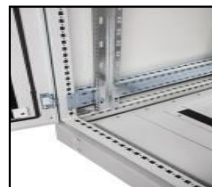
IP 55 rack

Specifications:

(WxHxD) 800x2100x800, 42U

- Delivered in grey (RAL 7035). All inside material is supplied in aluzinc.
- Special sealings on all parts ensure IP55 (EN60529)
- 19" profiles in front and rear.
- Plate door in front and rear with 3 point locking system. The door can be opened 130 degrees.
- Closed bottom- and top plate. In top there can be mounted 4 pcs. liftings eyes for easy and safety installation.
- Grounding-kit is installed for ensuring connection between alle parts.
- Holes in the corner profiles for easy cable support or for mounting of mounting plates etc.
- Special polyester paint makes the IP55 rack very strong in industrial enviroments and against corrosion.
- Delivered on a 100mm high plinth with 4 adjustable legs.

(WxHxD)	U	Descriptions	Type no. / EAN no.	Weight
800x2100x800	42	IP 55 rack 800x2100x800 w. plate door	Type 70501 EAN 5709832 021614	105 kg



Very strong
construction

19" Frame

This is a unique alternative to 19" racks. The 19" frames are light and can easily be transported in large quantities, with very low transport costs. Furthermore, the frames are an open version, which gives some benefits and especially a good access. Let the cable tray run down the wall and pass the cable directly to the frame. Use cable holders and cable management, and you have a fine installation.

Specifications:

(WxHxD) 600x2200, 48U

- Delivered in black (RAL 9005).
- Fastened to floor and wall – wall brackets can be adjusted between 330-530mm.
- All 19" accessories can be used in the frames.
- Horizontal cable guides can with success be used to hold patch cables in front of the frame.
- Small plastic cable holders can be ordered to mount vertically in the 19" holes. The cable holders can be mounted without any tools.
- Frames can with success be used in POP-installations. It's possible to mount finger management system, spool rears and cable trays.

Lightweight,
simple and
brilliant...

(WxHxD)	U	Descriptions	Type no. / EAN no.	Weight
600x2200x530	48	Frame, 48U	60031 5709832 066783	10 kg
19"	1	Horizontal cable guide	95179 5709832 066646	1,0 kg
Depth=80mm	1	1U cable holder with quick-lock (25 pcs.)	95288 5709832 067421	0,1 kg
100x48Ux100	48	Finger management, 48U	95362 5709832 067957	5,0 kg



48U frame mounted with finger management and horizontal cable guides.



Half frame on 24U – half of the delivered 19" profiles are used.

Low-cost alternative to 19" rack...

Easy cable management with plastic cable holders. Can be installed without any tools.



Flat pack in small package. There can be 300 pcs. on 1 EUR-pallet.



Horizontal cable guides to support patch cables etc.



Adjustable wall brackets are included.



19" wall bracket & vertical wall bracket...

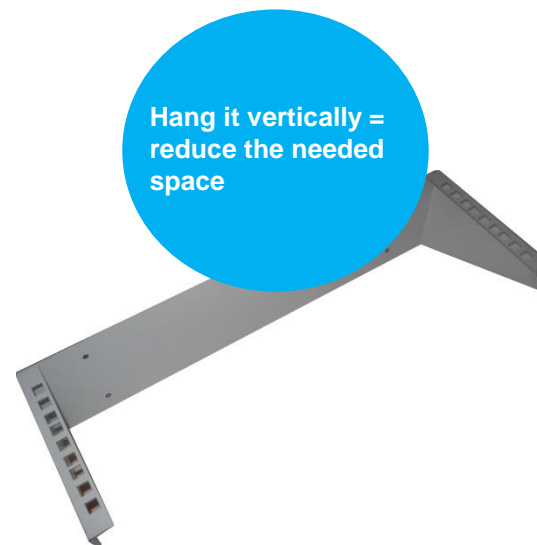
Use these simple and smart wall brackets. You can choose the new and smart vertical wall bracket, when you have deep equipment to install. With the vertical wall bracket the equipment hangs downwards and reduces the distance to wall.



Specifications:

- Delivered in grey (RAL 7035).
- Holes in rear plate for easy installing on wall.
- Use with success our black plastic blind plates to cover the front.
- From stock.

(WxHxD)	U	Descriptions	Type no. / EAN no.	Weight
19", D=250mm	4	19" wall bracket, 4HE, D=250mm	Type 60007 EAN 5709832 045047	1,75 kg
19", D=250mm	6	19" wall bracket, 6HE, D=250mm	Type 60023 EAN 5709832 045078	2,6 kg
19", D=400mm	6	19" wall bracket, 6HE, D=400mm	Type 60045 EAN 5709832 066769	3,4 kg
19", D=400mm	9	19" wall bracket, 9HE, D=400mm	Type 60046 EAN 5709832 066776	5,1 kg



Hang it vertically =
reduce the needed
space

Specifications:

- Delivered in grey (RAL 7035).
- Holes in rear plate for easy installing on wall.
- Smart solution for equipment with large depth. Hangs down and reduce the distance to the wall.
- From stock.

(WxHxD)	U	Descriptions	Type no. / EAN no.	Weight
19", 3HE	3	19" vertical wall bracket, 3U	Type 95256 EAN 5709832 010649	1,1 kg
19", 6HE	6	19" vertical wall bracket, 6U	Type 95257 EAN 5709832 010656	1,9 kg

Wall boxes for tele-, fiber, cable TV

This series is developed for the tele-, fiber-, and cable TV branch. The rear plate is made in wood and you can here easily mount the parts you use for the installation. When the installation is done, you hang the front cover on the rear plate.

The boxes are painted in grey, RAL 7035s.

The front cover has holes prepared for system locks (ex. RUKO) and there is also a plastic cap included for protection of the lock.



Cable entry in each side in the top plate and a large hole in the middle in the bottom plate.



Plastic cap for lock protection is included. Fits triangle locks, RUKO etc.

(WxHxD)	Mounting plate	Description	Type no.	Weight
355x350x100	Wood: (WxH) 345x345	Complete box with lock cap	Type VS345	3,9 kg
600x500x140	Wood: (WxH) 600x500	Complete box with Lock cap	Type VS500	9,0 kg
345x780x140	Wood: (WxH) 345x780	Complete box with lock cap	Type VS780	8,5 kg

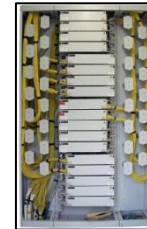
ODF-rack

Advantages of ODF-rack:

- Full view over all fiber cables.
- Correct bend radius.
- Control of cable management.
- Systematic control of cable overlengths.
- Modular based construction with possibility for later expansion.
- Minimal use of floor area.
- Up to 1920 terminations in rack.
- Installation / service on 1 spot.
- Easy access to all fibers.



Optical Distribution Frame...



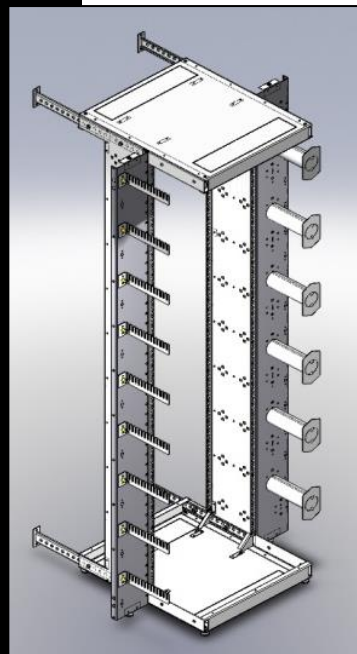
Professional rack for fiber management, delivered as standard or according to customer specifications.

CABINET SYSTEM

ODF-RACK FRAME

Advantages of ODF rack frame:

- Same advantages as our ODF-rack, but following things are very unique for the ODF frame:
- The construction is much cheaper.
- The frame solution can combine active and passive accessories. 19" profiles and side plates are integrated in same part and offers 19" profiles in front and rear. The side plate / 19" profiles can be mounted in several positions on the top- and bottom plate.
- You have better access to the frame.
- Extremely flexible solution, which can be combined in many ways. Doors can be ordered as extra and the spool rears can be installed after wish.
- Easy to handle - very low weight.



(WxHxD)	Description	Type no.
500x2000x588	Rack frame, 46U, complete with 4 pcs. wall brackets.	Type CC613
150x2000x200	Mounting plate with cable holder.	Type CC622
150x2000x200	Mounting plate with spool rears for handling of cable over lengths.	Type CC623

This product is not on stock and is only available at orders on min. 5 pcs.

Extremely flexible solution...



Professional rack frame with focus on cable management

Server room (CUBE)

Use aisle containment in the server rooms to achieve large savings in energy. With a aisle containment you can create a closed room (CUBE) – in order to separate warm air from cold air.

Cabinet System is a supplier of complete customized solutions including setting up the rack/CUBE - adapted to every wish/need. We also deliver side coolers and other accessories.

Server racks:

SS-serie Optiorack, or Aluminiumrack - we can deliver everything from a small simple solution to an advanced large solution. The choosing of the server rack is essential for the finished solution and also the degree of functions. Cable support accessories and so forth is chosen in close dialogue – with our sales team.

Accessories:

Cabinet System offers a wide range of accessories for server racks, such as shelves, unique cable support, sliding support for servers, quick-lock blind plates and yellow fiber duct. Furthermore a very large and well assorted program in one- and 3-phase power panels.

CUBE (aisle containment):

Cabinet System builds a closed CUBE, adapted to the customers specifications and adapted to the room. It is made to meet the wish for ceiling height and the width of the CUBE. The solutions contains high-end sliding doors.

Cooling:

We co-operate with the “cooling – installer” and adapt the racks and CUBE, so the cables and water pipes are fitted through dialogue with the installer. By using our side-coolers we deliver a complete solution integrated in a 300mm rack.



Choose a CUBE made in your choice of color and size !

Practical knowledge behind the room

To achieve efficient cooling the air flow in the room has to be controlled. The controlled air and the separated cold/hot air means significant savings in electricity and much less need for cooling. It is therefore essential to place the racks correct in the room.

In most servers the cold air intake is on the front and the hot air is blown out through the back. Therefore it is necessary to ensure the cold air comes in front and the hot air is led away through the back.

This is best done by placing the racks in a row, where you can establish hot and cold aisles. Cabinet System delivers a closed aisle (CUBE), which consists of sliding doors at the end of the aisles and roof over the aisle.

With Cabinet System as a partner you don't have to change the existing racks. We build around your racks if you don't want to change them. That way the technical solution is chosen if it must be vertical (rack – ceiling) or horizontal (rack – rack). With the use of the existing racks the investment is reduced and also avoiding interruption of the running system.

Contact Cabinet System for counseling .



Install without
interruption of the
running system

Superb solution on custom dimensions...

Design your CUBE inside the server room with extra flexibility in both dimensions, colors and choice of material. Cabinet System offers 2 types of CUBE-constructions:

1) A solution with ceiling, doors and a finish against the wall, can all be delivered and integrated on existing racks or to new racks. Even racks with different dimensions can be handled.

2) Self supporting construction with ceiling, adjustable "ceiling to rack"-plates and a free choice in each end, between finish against the wall or sliding doors.

The self supporting construction is very unique and gives possibility to remove racks from the CUBE and instead install an air-wall until new rack comes in. The construction is especially designed to handle racks with different dimensions.

Have a custom made solution from Cabinet System and get extreme flexibility in your server room.



Did you know that white racks can reduce the energy consumption for light with 50%? Use our offer for free color choice to design your own CUBE.

Exclusive slide doors with glass – they close by themselves without use of electricity.



Stable ceiling plates in polycarbonate and aluminum profiles.



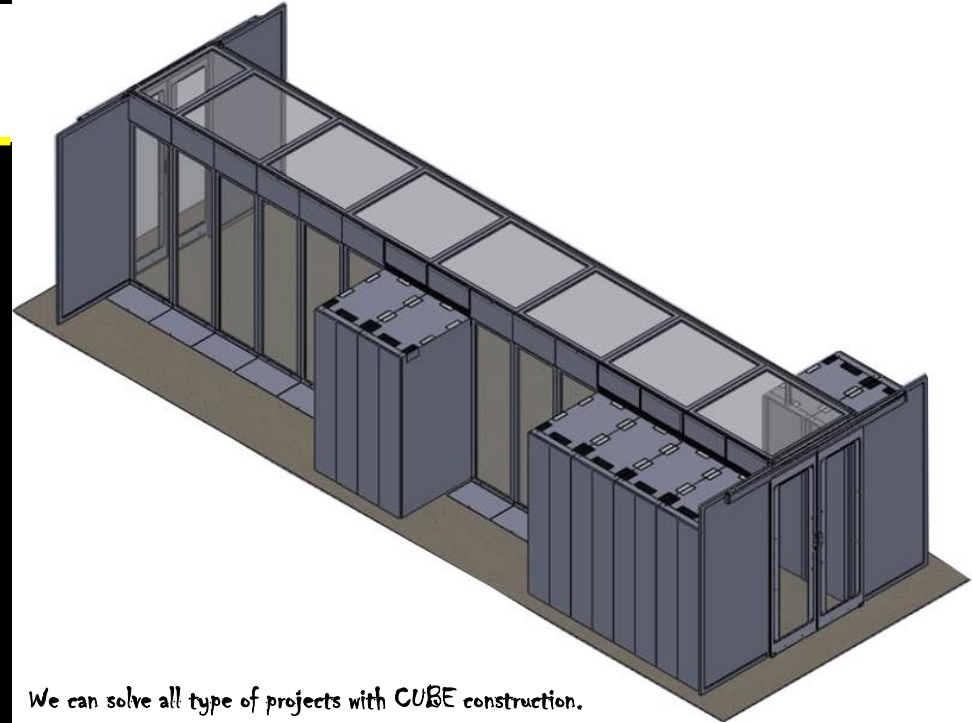
CABINET SYSTEM

SELF SUPPORTING CUBE CONSTRUCTION

SAVE UP TO 25% ON ENERGY CONSUMPTION AND GET NEW DYNAMIC POSSIBILITIES IN THE SERVER ROOM.

Advantages:

- ✓ The CUBE construction is self supporting and no racks thereby locked in their position in the installation.
- ✓ Racks can be taken in and out the CUBE.
- ✓ The CUBE is always sealed, all racks whatever their height, is covered with adjustable "ceiling to rack" plates. Free rack places is covered with air walls.
- ✓ All racks whatever their dimensions can be used.
- ✓ Very nice design on the CUBE – even with many different rack types.
- ✓ Very easy to install the CUBE.



We can solve all type of projects with CUBE construction.

SIDE COOLER

A side cooler is a cooling unit which is placed between your racks. Here the unit takes the hot air and transforms it to cold air.

Cabinet System is specialist in building the side cooler, so it fits the racks in dimensions, colors etc. Minimum dimension is (WxHxD) 300x2000x1000mm.

You can choose different cooling capacities, please see next page for further information.

Ask us for further assistance at + 45 7027 3626.



A side cooler deliver cooling right beside your rack and do not cool unnecessary areas – this gives good economy...



CABINET SYSTEM

Schedule with overview of variants, type numbers, weight etc.

Type	Open / closed	Input (V)	Input water	Nominal cooling capacity	Air volume (m3/t)
RAW A1	Open	230V	Water from chiller	12,5 kW	2500
RAW A7				16,2 kW	3600
RAW B1				19,3 kW	3600
RAW A6	Closed			21,6 kW	2600
RAW B2				29,5 kW	4000
RAW C4				36,0 kW	4000

Ask us for further details...

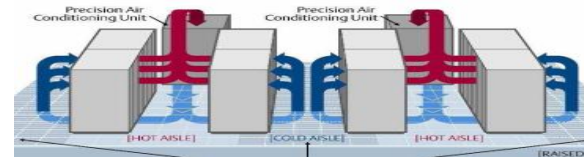
General about cooling

Cabinet System can deliver a cooling solution from 300W to 4000W to be installed directly on the rack.

Contact us on 7027 3626 for further assistance.



Cooling units for smaller installations can be mounted on the racks



Large installations need controlled air flow with separate cold-/hot aisle (CUBE solution).

Smart product for your CUBE or server room....

Smart
buy

ADHESIVE MAT – get a step closer to a dust free data center.

With a minimal effort you can reduce risk for dust in the server and shutdowns.

The frequent cause for fire in server rooms and data centers is dust in the fans. Therefore dust has to be avoided as much as possible.

A little particle with large effect. Dust is not only a reason for shutdowns. It also generates larger energy consumption og lower life time of the servers, UPS systems etc. Most UPS systems suck air from floor level and therefore dust especially has to be avoided. An adhesive floor mat will already at the door entry, effectively stop all fine dust and dirt from shoes and wheels etc.

The mat has to be placed at the door entry. Our mat has a size which should be large enough for the first 2 steps into the room.

Every mat has 30 layers, which can be removed one by one, when the surface is dirty. It's very simple and very effective.

Specifications for 30 layer adhesive floor mat

Description	30 layer adhesive floor mat in white color.
Dimensions	1150x660 mm
Type no. / EAN no.	95310 5709832 067711

Outdoor Cabinets in an new and smart way...

Cabinet System delivers customized outdoor solutions and has through the last years specialized in solutions for the tele- and fiber industry.

We produce cabinets in steel and can therefore deliver everything from small simple cabinet solutions to the large double walled solutions for active equipment.

Cabinet System is also selling the Sichert plastic cabinets in all of Scandinavia and is therefor able to deliver a large program of plastic solutions.

All the cabinets has a calculated life expectancy of more than 25 years. We use the best possible materials to ensure the best possible conditions for the surface treatment (paint) and to avoid corrosion.

Contact us for a dialogue – on how we can make a unique solution for you.

Outdoor



CABINET SYSTEM

ACCESSORIES

Cable management:

Choose a system which wisely takes care of the cables and in good way solve the cable over lengths.

Get inspired for both vertical and horizontal cable handling.



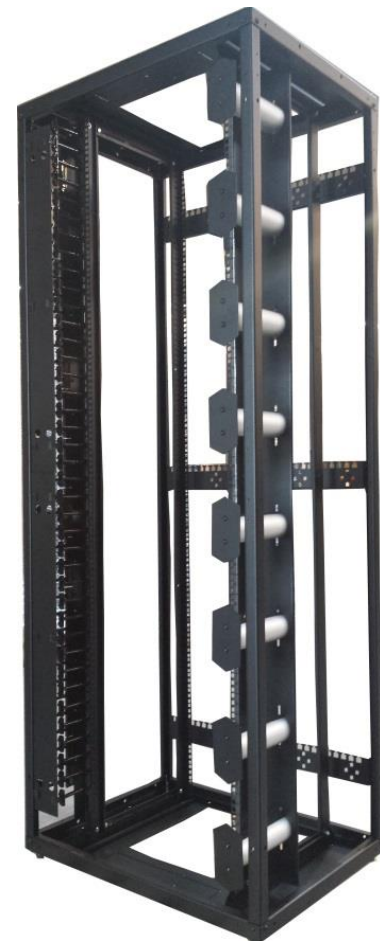
Power panels:

The trend is that power panels get more and more possibilities for monitoring – on the panel or over an IP address. Even advanced functions is yet possible. Get inspired in our large program and find your solution.



Other accessories:

Use accessories which solve your needs. Use blind plates, shelves, wheels etc. after your own wish.



The right accessories fulfill your installation...

Cable management...

Add some good value to your installation with control, safety and good order. With a management system you keep the overview and can avoid cable mess.

Visual the systems makes a big difference. They are time saving and make it easy for the installer to do the installation properly. Important things like handling of cable over lengths, is also handled in this systems.

- ✓ Get control, safety and good order.
- ✓ Helps the installer to follow norms like 50174-2, which especially focus on demands for right handling of cables.

Choose between 4 different vertical cable management systems...

Finger management



Finger management, fingers with round edges.

Plate with spool rears



Plate with spool rears. Rears has a large radius and is especially good to handle cable over lengths.

VKM, vertical cable management

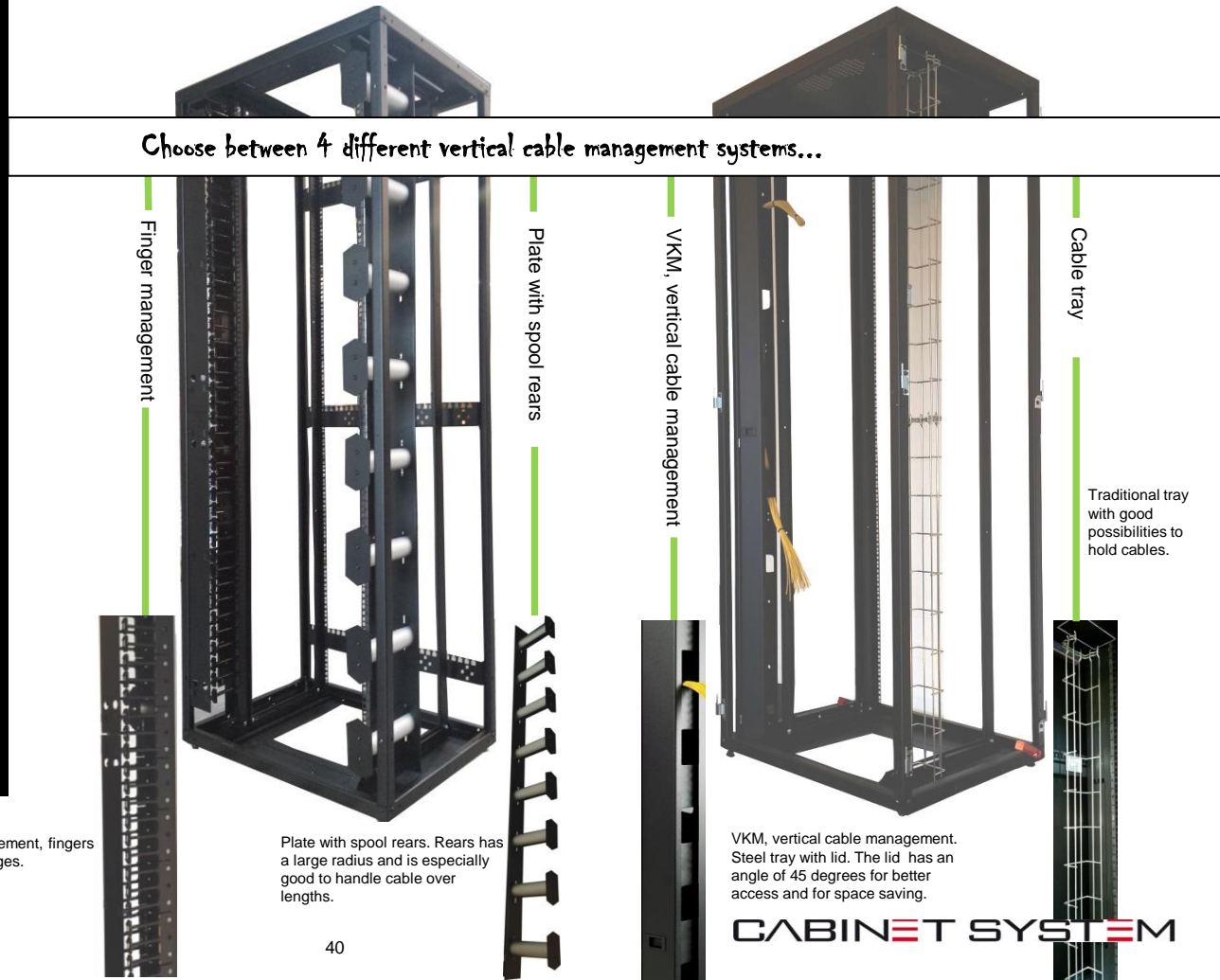


VKM, vertical cable management. Steel tray with lid. The lid has an angle of 45 degrees for better access and for space saving.

Cable tray



Traditional tray with good possibilities to hold cables.



Cable management choose between 4 different vertical cable management systems...



Horizontal
+ vertical

Description	Finger management - system with out any sharp edges. Unique for controlling of cables and handling over lengths. Can be mounted next to the 19" profiles and can be adjusted in the depths. Delivered with click on lid and 2 pcs. spool rears.
Dimensions	42U, Depths=100mm.
Type no. / EAN no.	95319 5709832 067698

Description	Horizontal finger management.
Dimensions	19" / 2U
Type no. / EAN no	95320 5709832 067704

Fits very well in NEXT STEP, SS-serie and Optiorack.



Description	Vertical cable management Smart steel tray with lid. There is holes in the tray for cables which has to pass in the depth into the rack. 1 set consist of 1 tray for each side.
Dimensions	42U / 100x100mm
Type no. / EAN no.	95107 5709832 046174

Fits very well in NEXT STEP, SS-serie and Optiorack.



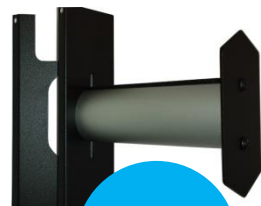
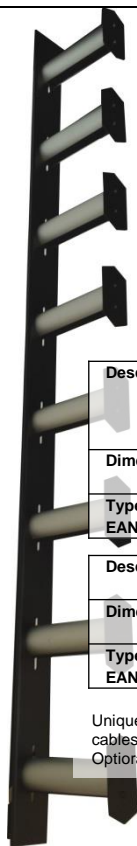
Description	Cable tray for vertical cable holding.
Dimensions	42U / 100x50
Type no / EAN no.	95317 5709832 067667

Description	10 pcs. velcro
Dimensions	L=30cm
Type no. / EAN no.	95321 5709832 067728

Open tray. Easy to fasten cables in the tray.

CABINET SYSTEM

Cable management...

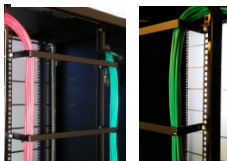


Vertical

Description	Plate with up to 8 spools. Delivered with 5 spool rears, more can be ordered. The plate can be adjusted independent of the 19" profiles.
Dimensions	Spool rears L=200mm.
Type no. / EAN no.	95318 5709832 067674

Description	1 pcs.spool rear.
Dimensions	Spool rear L=200mm.
Type no. / EAN no.	95303 5709832 067681

Unique solution to handle over lengths and large quantities of cables. Can be used in Multirack NEXT STEP, SS-serie and Optiorack. Ask for other racks.



Horizontal

Description	Horizontal 19" bracket
Dimensions	19" dim., 1 U
Type no. / EAN no.	95179 5709832 066646

Good solution for wall racks and floor racks with a wide on 600mm. Mount with advantages several 19" brackets in front and get a proper vertical solution.



Horizontal

Description	Patch cable panel with 4 pcs. cable holders
Dimensions	19" dim., 1U
Type no. / EAN no.	95008 5709832 065816

Used for horizontal cable holding. A "must" in every racks.

Cable management...

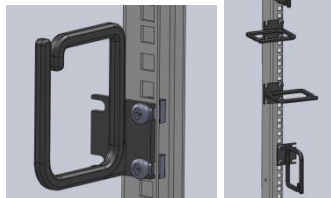


Cable holder

Description	Cable holder with quick-lock function, Delivered in bag with 25 pcs.
Dimensions	D=80mm, 1 U
Type no. / EAN no.	95288 5709832 050208

Turn the cable holder a half round and its mounted.. Can be mounted in all 19" holes. Genius to all racks – remark that in special racks you can ask for extra holes to this cable holder .

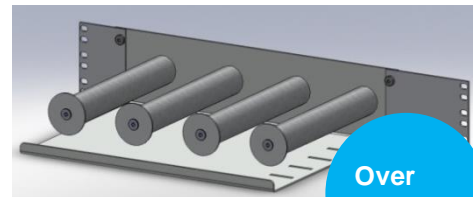
Coming soon



Cable holder

Description	2U cable holder. Can be installed in several positions. Delivered in a bag with 10 pcs.
Dimensions	1 U for mounting and 2U for the useful holder. 90x80mm (depth = 80mm)
Type no. / EAN no.	95364 5709832 067964

New smart cable holder. Take only 1U space – and it can even be mounted below others accessories, so it doesn't take any space at all. The cable holder is strong and has nice round edges to protect cables.



Over lengths

Description	Over lengths module with 4 spool rears. Fits in 15", 19" and ETSI
Dimensions	15"/ 19"/ETSI, 2 U
Type no. / EAN no.	95322 5709832 067735

Smart box which handle over lengths. Turn the cable around the spool rear and keep properly control over the cables. In the bottom there is holes for Velcro. Delivered with brackets so it fits 15", 19" and ETSI – that's smart!

Power panels for 19" ...



Input	10A Danish plug on 2m wire.
Output	8x230V, DK-variant, with LED
Type panel	Basic
Phases	1 phase
Length	19" dim.
Type no. / EAN no.	95037 5709832 065380

Input	13A, CE-plug on 3m wire
Output	8x230V, Schuco variant with LED
Type panel	Basic
Phases	1 phase
Length	19" dim.
Type no. / EAN no.	95328 5709832 067827

Input	16A, Schuko plug on 2m wire
Output	8x230V, Schuco variant with LED
Type panel	Basic
Phases	1 phase
Length	19" dim.
Type no. / EAN no.	95220 5709832 010403

Input	10A ,Danish EDB-plug with 2m wire.
Output	8x230V, Danish EDB-variant with LED
Type panel	Basic
Phases	1 phase
Length	19" dim.
Type no. / EAN no.	95040 5709832 065427

Power panels for 19" ...



Input	10A, Danish plug on 2m wire
Output	12xC13
Type panel	Basic
Phases	1 phase
Length	19" dim.
Type no. / EAN no.	95223 5709832 010434



Input	16A, blue CEE plug on 2,8m wire
Output	12xC13
Type panel	Basic
Phases	1 phase
Length	19" dim.
Type no. / EAN no.	95251 5709832 010533



Input	16A, Schuko plug with 2m wire
Output	12xC13
Type panel	Basic
Phases	1 phase
Length	19" dim.
Type no. / EAN no.	95224 5709832 010441

Power panels for 19" ...



Input	16A blue CEE plug on 2,8m wire
Output	9x C13 m. digital ampere meter
Type panel	Basic – visual monitoring
Phases	1 phase
Length	19" dim.
Type no. / EAN no.	95225 5709832 010458

Did you know that your fuse will break when the load is over 16Amp.? This smart panel helps you to keep an eye on the load, so this will not happen for you.



Input	10A, Danish plug on 3m wire
Output	6x230V, DK version with surge protection
Type panel	Basic – surge protection
Phases	1 phase
Length	19" dim.
Type no. / EAN no.	95217 5709832 050034

Protect your equipment with this panel. Shut downs can be very expensive and this little panel can make a big difference.



Input	16A, Schuko plug on 3m wire
Output	6x230V, Schuko w. surge protection
Type panel	Basic – surge protection
Phases	1 phase
Length	19" dim.
Type no. / EAN no.	95252 5709832 010526

Protect your equipment with this panel. Shut downs can be very expensive and this little panel can make a big difference.

2U, Power panel for 19" ...

Managed



Monitored
& switched



Input	16A, CEE
Output	8xC13 with lock + 4xC19 with lock.
Type panel	Monitored panel. Measure input current. Can measure Volt, Ampere, Watt, kWh. Further more it can be expanded to also measure temperature and humidity. Can be monitored via http. Up to 4 units can be mounted in serial, so only one IP address is needed. Can send alarms via SNMP or email. Environment sensors can be connected to the pdu.
Phases	1 phase
Length	19" dim.
Type no. / EAN no.	95366 5709832 067988

Input	16A, CEE
Output	12xC13 with lock + 4xC19 with lock
Type panel	Monitored panel and switched panel. Measure consumption per plug and for all plugs. Can measure Volt, Watt, kWh and Ampere. Further more it can be expanded to measure temperature and humidity. Possibility for on/off function per plug. Monitored via http. Up to 4 units can be mounted in serial connection, so only one IP address is needed. Can send alarms via SNMP or e-mail. Environment sensors can be connected to the PDU.
Phases	1 phase
Length	19" dim.
Type no. / EAN no.	95367 5709832 067995

2U instead of vertical power panels...

Unique solution, which can be used in all racks whatever their size.

Normally this solution is only available in long panels, but this solution makes it possible to use them in wall racks and wide 600 racks, where long power panels normally not can be used.

Power panels...

See our full program on our homepage. Vertical power panels is in constant development and we therefore choose only to show them on our homepage, which we constantly update.

Our program is very large and whatever you are looking for we will for sure have a solution for you.

You is also welcome to call us for further assistance - +45 7027 3626.

Long power panels for vertical mounting...



Cables for power panels

We are able to deliver colored cables and cables on special lengths.

Call for a offer on +45 7027 3626.

Power cords ...



Power cords

Input	C14
Output	C13
Dimensions	10Amp, L=2m, color=green
Type no. / EAN no.	95324 5709832 067759

Input	C14
Output	C13
Dimensions	10Amp, L=2m, color=red
Type no. / EAN no.	95325 5709832 067766

Visualize the difference on your A and B supply by using 2 different colors on your power cords.



Power cords

Input	C19
Output	C20
Dimensions	16Amp, L=1m, color=green
Type no. / EAN no.	95326 5709832 067773

Input	C19
Output	C20
Dimensions	16Amp, L=1m, color=red
Type no. / EAN no.	95327 5709832 067780

CABINET SYSTEM

Shelf's for front mounting...



Smart buy

Description	For front mounting , 19" shelf in 1, 2 and 3U. Available in black and grey.
Type no. / EAN no.	Black, 1U, D=250, max. 10 kg 95180 5709832 066609
Type no. / EAN no.	Black, 2U, D=300, max. 20 kg. 95181 5709832 066615
Type no. / EAN no.	Black, 3U, D=400, max. 30 kg. 95182 5709832 066622

Type no. / EAN no.	Grey, 1U, D=250, max. 10 kg 95168 5709832 066516
Type no. / EAN no.	Grey, 2U, D=300, max. 20 kg. 95169 5709832 066523
Type no. / EAN no.	Grey, 3U, D=400, max. 30 kg. 95170 5709832 066530

Our most sold shelf's. Fits in all racks. Simple and functional.

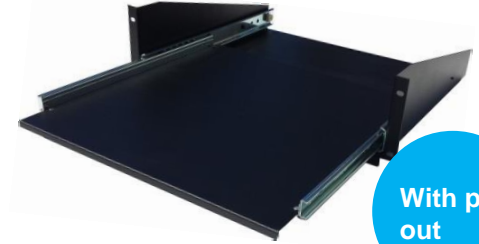


With perforation

Description	19" shelf, for front mounting with perforation. Available in black or grey.
Type no. / EAN no.	Black: 2U, D=300, max. 40 kg. 95183 5709832 066639
Type no. / EAN no.	Black: 3U, D=400, max. 40 kg. 95191 5709832 075006

Description	19" shelf, for front mounting with perforation. Available in black or grey.
Type no. / EAN no.	Grey, 2U, D=300, max. 40 kg. 95050 5709832 065571
Type no. / EAN no.	Grey, 3U, D=400, max. 40 kg. 95051 5709832 065588

Ventilation gills in the shelf makes the air pass through the shelf and makes sure that the shelf's do not cause a "hot spot" in your rack.



With pull out

Description	19" shelf for front mounting with 20cm and 28 cm pull out respectively depth 300 and 400. Black/grey.
Type no. / EAN no.	Black, 2U, D=300, max. 40 kg, 95192 5709832 075013
Type no. / EAN no.	Sort, 3U, D=400, max. 40 kg, 95193 5709832 075020

Type no. / EAN no.	Grey, 2U, D=300, max. 40 kg, 95048 5709832 065557
Type no. / EAN no.	Grey, 3U, D=400, max. 40 kg, 95049 5709832 065564

Use the possibility to pull out the shelf. Can be used for keyboard or electronics, where access from rear is needed.

CABINET SYSTEM

Shelf's for 4 point mounting...



4 point.
482mm

Description	19" shelf for 4 point mounting. Available in black and grey. D=482mm
Type no. / EAN no.	Black, 1U, D=480 mm, max. 90 kg. 95194 5709832 075037

Type nr. / EAN nr.	Grey, 1U, D=480 mm, max. 90 kg. 95087 5709832 066165
---------------------------	---

Install the shelf between the front and the rear 19" profiles. It's gives possibility to load a lot of kilo.
The shelf's are as standard with perforation holes to avoid "hotspots" inside the rack.



4 point.
672mm

Description	19" shelf for 4 point mounting. Available in black and grey, D=672mm
Type no. / EAN no.	Black, 1 U, D=672 mm, max.90 kg. 95195 5709832 075044

Type no. / EAN no.	Grey, 1 U, D=672 mm, max.90 kg. 95088 5709832 066172
---------------------------	---

Our deepest standard shelf. All shelf's can be adjusted in the depths with changing the position of the brackets.



With
pull out

Description	19" shelf for 4 point mounting with pull out. Available in black and grey.
Type no. / EAN no.	Black, 1U, D=480 mm, max.90 kg. 37 cm pull out 95196 5709832 075051
Type no. / EAN no.	Black, 1U, D=672 mm, max. 90 kg. 52 cm pull out 95197 5709832 075068

Type no. / EAN no.	Grey, 1U, D=480 mm, max.90 kg. 37 cm pull out 95089 5709832 066189
Type no. / EAN no.	Grey, 1U, D=672 mm, max. 90 kg. 52 cm pull out 95090 5709832 066196

Miscellaneous accessories

Blind plates is important. In racks with cooling or ventilation it is important to separate cold and hot air. Our blind plates are easy to install – just click them in the 19" profiles.



Blind plate

Description	1U blind plate in a bag with 10 pcs.
Dimensions	19", 1 U
Type no. / EAN no.	95289 5709832 067377

Description	1U blind plate in a bag with 100 pcs.
Dimensions	19", 1 U
Type no. / EAN no.	95293 5709832 067438

Make a correct air flow with this smart plastic blind plate. Click it on with out any need for tools.



RJ45 Panel

Description	19" panel for 20xRJ45 Delivered without print/numbers
Dimensions	19", 1 U
Type no. / EAN no.	95000 5709832 065724

Description	19" panel for 48xRJ45. Delivered without print/numbers
Dimensions	19", 2 U
Type no. / EAN no.	95001 5709832 065731

RJ45 panels for your network. Hole dimensions for RJ45, 15x19mm. Can be used for AMP, Key-stone and Solar Plus.

Miscellaneous accessories



PDS panel

Description	PDS panel, outside, 2xAWI 110, 4U.
Dimensions	19", 4 U
Type no. / EAN no.	95045 5709832 065519

Description	PDS panel, outside, 2xAWI 110, 2U.
Dimensions	19", 2 U
Type no. / EAN no.	95044 5709832 065496



Document
-holder

Description	Document holder, grey.
Dimensions	370x340x32
Type no. / EAN no.	95068 5709832 065687

Smart way to store documents.

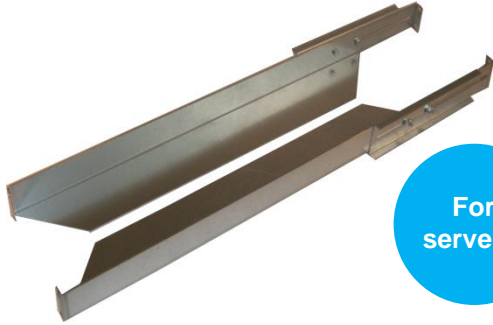


Termometer

Description	1U blind plate with thermometer 0-60 degrees, 2m wire with sensor.
Dimensions	19", 1U
Type no. / EAN no.	95095 5709832 066264

Good solution. Keep a eye on the temperature in racks. Place the sensor where you want.

Miscellaneous accessories...

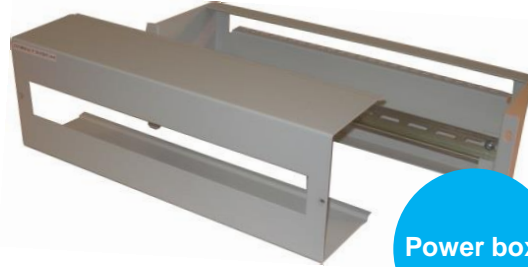


For servers

Description	Sliding rails, adjustable in depth.
Dimensions	19", 1 U, 440-640mm
Type no. / EAN no.	95259 5709832 010625

Description	Sliding rails, adjustable in depth.
Dimensions	19", 1 U, 640-840mm
Type no. / EAN no.	95258 5709832 010632

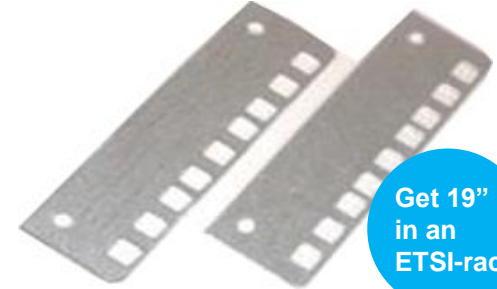
Sliding rails for heavy equipment ex. servers. Can be used in all racks with 19" profiles in front and rear.



Power box

Description	3,5U power box with lid and DIN-rail. RAL 7035, grey.
Dimensions	19", 3,5U, D= 132mm
Type no. / EAN no.	95213 5709832 010557

Description	7,5U power box with lid and 2 pcs. DIN-rails. RAL 7035, grey.
Dimensions	19", 7U, D= 132mm
Type no. / EAN no.	95212 5709832 067551



Get 19" in an ETSI-rack

Description	ETSI/19" adapter, 3U
Dimensions	3U
Type no. / EAN no.	95294 5709832 067452

Use these adapters when you wish to install 19" equipment in an ETSI rack

Miscellaneous accessories ...

Use a thermostat together with fans and heating elements.
For heating the thermostat with breaker has to be used.



Fan

Description	Fan, 230V, with wire, Effect: 125m ³ /hour.
Dimensions	120x46x120mm
Type no. / EAN no.	95056 5709832 065786



Termostat

Description	Thermostat, 0-60 degrees.
Dimensions	33x60x41mm
Type no. / EAN no.	95059 5709832 065861

Description	Thermostat, 0-60 degrees with breaker
Dimensions	33x60x41mm
Type no. / EAN no.	84425 5709832 067810

Description	1U, bracket for thermostat.
Dimensions	1U
Type no. / EAN no.	95365 5709832 067971



Filter
with grids

Description	Filter with 2 grids
Dimensions	150x150mm
Type no. / EAN no.	95058 5709832 065854

Use a filter with 2 grids, when you want ventilation and at the same time wants dust to stay away.

Miscellaneous accessories ...



Mounting clips

Description	Mounting clips with screw and PVC washer.
Type no. / EAN no.	19" mounting clips (10 set) 95066 5709832 065656
Type no. / EAN no.	19" mounting clips (50 set) 95099 5709832 066806
Type no. / EAN no.	19" mounting clips (100 set) 95190 5709832 066813

Strong mounting clips.



30 layer adhesive mat

Description	30 layer adhesive floor mat.
Dimensions	1150x660
Type no. / EAN no.	95310 5709832 067711

You send a clear signal with this mat. The server room has to be kept clean from dust. The adhesive floor mat has 30 layers and is easy to use.



Earth terminal

Description	Earth terminal with 6 terminals for 10mm ² and 1 terminal for 16mm ²
Type no. / EAN no.	95248 5709832 067360

This terminal can be mounted in most of our racks with only 2 screws.

Miscellaneous accessories ...



4 wheel-
drive ...

Description	4 pcs. wheels, 2 with brake and 2 without brake. Max 250 kg.
Type no. / EAN no.	95114 5709832 066554



System
lock

Description	Swing handle prepared for system lock (RUKO).
Type no. / EAN no.	81022 5709832 065908



Heating
element

Description	100W heating element for DIN rail mounting.
Dimensions	80x140x47mm
Type no. / EAN no.	P1232 5709832 067803

Easy to mount. Remove the adjustable legs and install the wheels.

Used in both indoor and outdoor solutions. May be ordered together with thermostat with breaker.



Please feel free to contact us...

Cabinet System are one of the leading Scandinavian manufactures of 19" racks. With a strong standard program and unique ability to supply special solutions, the company can supply everything from the simple parts to advanced solutions. Cabinet System also offers solutions for server rooms, outdoor cabinets and all kinds of customized solutions.

Please feel free to contact our sales team at tel. +45 7027 3626 and let us be helpful with your next solution. You can also find more information about our solutions on our website or you can call us for a visit in our showroom.

Contact

Cabinet System A/S
Platanvaenget 14
8990 Faarup
Danmark

e-mail: salg@cabinetsystem.dk

Tel: +45 7027 3626
Fax: +45 8645 2909

www.cabinetsystem.dk