

# HP Retail Monitors



## Make a modern impression on your customers

Deliver an enhanced experience to both your customers and store associates with the eye-catching family of HP Retail Monitors that come in a variety of sizes and both touch and non-touch options. Store associates will enjoy the familiar, user-friendly technology and customers will benefit from the display of useful product and promotional content as well as the ability to easily enter loyalty information and other preferences.



### Wide aspect for a wide range of apps

Thin sleek, virtually borderless, widescreen design and high resolution allow these displays to complement your environment. With your choice of screen size from 10.1 to 15.6 diagonal inches, mounting options, and touch or non-touch, you gain the flexibility you need to meet both your customer's and associate's needs.

### Durability for high-traffic areas

Place the sturdy, dust-resistant, easy-to-clean displays in a range of high-traffic areas; attached to one of HP's platforms as a customer-facing display or used as a stand-alone display.

### Easy Interactivity

The Projective Capacitive ten-point touch technology provides a familiar, intuitive experience that responds to dry or wet fingers, and beep-on-touch audibly confirms successful touchscreen interaction.

### Backed by world-class support specialists.

Rest assured that your IT investment is supported by a three-year standard limited warranty and optional HP Care Packs.<sup>1</sup>

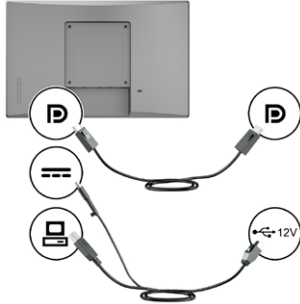
## HP Retail Monitors Specifications

Specification	HP L7010t 10.1 in Retail Touch Monitor (T6N30AA)	HP L7014 14-in Retail Monitor (T6N31AA)	HP L7014t 14-in Retail Touch Monitor (T6N32AA)	HP L7016t 15.6-in Retail Touch Monitor (V1X13AA)
<b>Native Resolution</b>	1280x800 @60Hz	1366x768 @60Hz	1366x768 @60Hz	1366 x 768 @ 60Hz
<b>Response Time</b>	30 ms on/off (typ.)	16 ms on/off (typ.)	16 ms on/off (typ.)	8 ms on/off (typ.)
<b>Panel Active Area</b>	216.96mm x 135.6mm	309.4mm x 173.95mm	309.4mm x 173.95mm	216.96mm x 135.6mm
<b>Viewing Angle</b>	Horizontal: 160 degrees; Vertical: 160 degrees (CR<10 typ.)	Horizontal: 90 degrees; Vertical: 60 degrees (CR<10 typ.)	Horizontal: 90 degrees; Vertical: 60 degrees (CR<10 typ.)	Horizontal: 170 degrees; Vertical: 160 degrees (CR<10 typ.)
<b>Display Type</b>	ADS w/LED backlight	TN w/LED backlight	TN w/LED backlight	TN w/LED backlight
<b>Brightness</b>	220 nits (with glass)	200 nits (with glass)	200 nits (with glass)	360 nits (with glass)
<b>Tilt adjustability</b>	-5 to +135 degrees	-5 to +135 degrees	-5 to +135 degrees	-5 to +135 degrees
<b>Interface / Connection</b>	1x DisplayPort 1.2, HDCP Support	1x DisplayPort 1.2, HDCP Support	1x DisplayPort 1.2, HDCP Support	1x DisplayPort 1.2, HDCP Support
<b>Touch Panel Type</b>	Projected Capacitive Touch Panel (up to 10 touch points)	N/A	Projected Capacitive Touch, Panel, > 10 points	Projected Capacitive Touch Panel, > 10 points
<b>Touch Positional Accuracy</b>	±1.0 mm for all areas of touchable active area	N/A	±1.0 mm for all areas of touchable active area	Within 1.0mm each target & 10% Jitter limit on moving
<b>Touch Resolution Accuracy</b>	4096 x 4096	N/A	4096 x 4096	25ppi (Min.) Based on WIN8 definition ppi (Pixel per inch)
<b>Dimensions (WxDxH)</b>	245.9mm x 41.5mm x 172.2mm (9.7 inches x 1.7inches x 6.8 inches), unpacked without stand	339.8mm x 41.5mm x 218mm (13.4in x 1.7in x 8.6in), unpacked without stand	339.8mm x 41.5mm x 218mm (13.4 in x 1.7 in x 8.6 in), unpacked without stand	397.3mm x 45mm x 251.4mm (15.6in x 1.8in x 9.9 in) unpacked without stand
<b>Weight</b>	1.15kg (2.54lbs), unpacked without stand	1.68kg (3.71lb), unpacked without stand	1.70kg (3.76lbs), unpacked without stand	3.0kg (6.61lbs), unpacked without stand
<b>Option kit Contents</b>	HP Retail Display Head, Setup poster, and Documentation CD.			
<b>Service and Warranty</b>	Your HP Peripheral Limited Warranty is a three (3) year advanced exchange parts replacement warranty.			

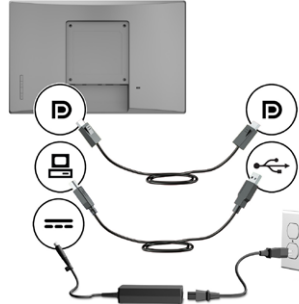
## Configuration Options

### HP 15.6-in Retail Touch Monitor

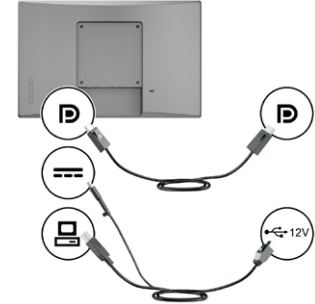
**Mounted to an HP RP5 Retail System as CFD.**



**Connected to an HP Retail System without a 12 V powered USB port.**



**Connected to an HP RP5 Retail System with a 12 V powered USB port.**



Requires:

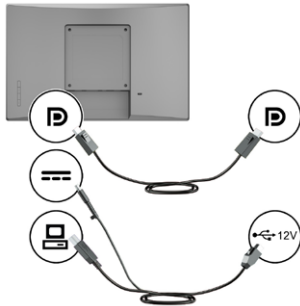
HP 700mm Cable Kit for CFD on RP9 (V7563AA)

HP 300cm DP and USB B to A Cable for L7016t, L7014t, L7010t (V4P96AA)  
 HP Compact Stand (W0Q45AA)  
 45W Power Adapter (H6Y88AA)

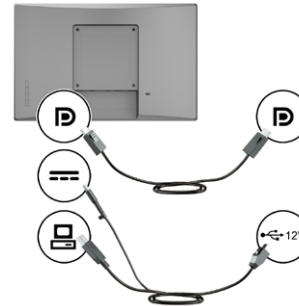
HP 300cm DP and USB Power Y Cable for L7010t, L7014t, L7016t (V4P94AA)  
 HP Monitor Stand for L7016t (W0Q45AA)

### HP 14-in Retail Touch Monitor

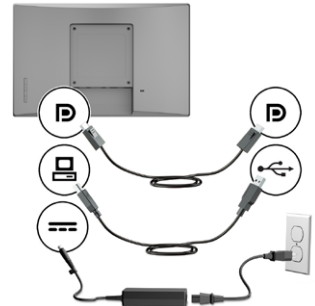
**Mounted to an HP Retail System as CFD.**



**Connected to an HP RP5 Retail System with a 12 V powered USB port.**



**Connected to an HP Retail System without a 12 V powered USB port.**



Requires:

HP 700mm Cable Kit for CFD on RP9 (V7563AA)

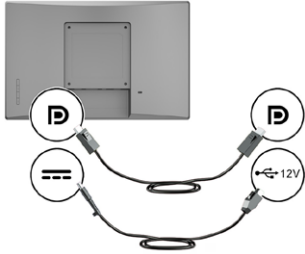
HP 300cm DP and USB Power Y Cable for L7010t, L7014t, L7016t (V4P94AA)  
 HP compact Stand (T6N33AA)

HP 300cm DP and USB B to A Cable for L7016t, L7014t, L7010t (V4P96AA)  
 HP Compact Stand (T6N33AA)  
 HP 45 W Power Adapter (H6Y88AA)

## Configuration Options cont.

### HP 14-in Retail Monitor

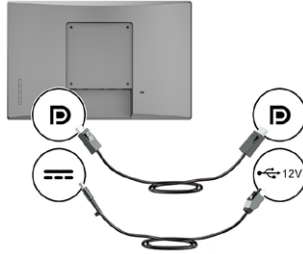
Mounted to an HP Retail System as CFD.



Requires:

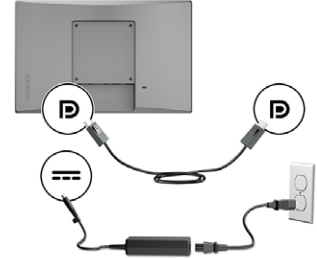
HP 700mm Cable Kit for CFD on RP9 (V7563AA)

Connected to an HP RP5 Retail System with a 12 V powered USB port.



HP 300cm DP and USB Power Cable for L7014 (V4P95AA)  
HP Monitor Stand for L7010t, L7014, L7014t (T6N33AA)

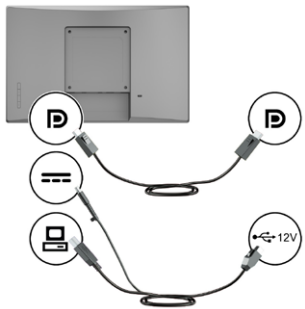
Connected to an HP Retail System or PC without a 12 V powered USB port.



HP 300cm DisplayPort Cable for L7014 (V4P97AA)  
HP Monitor Stand for L7010t, L7014, L7014t (T6N33AA)  
HP 45 W Power Adapter (H6Y88AA)

### HP L7010t 10.1 in Retail Touch Monitor

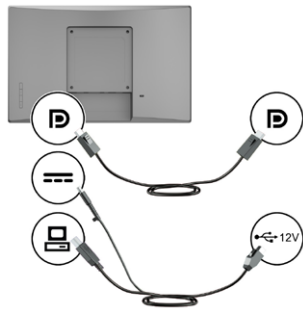
Mounted to an HP RP9 Retail System as CFD with a 12 V powered USB port.



Requires:

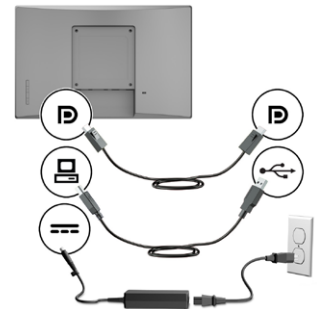
HP 700mm Cable Kit for CFD on RP9 (V7563AA)

Connected to an HP RP5 Retail System with a 12 V powered USB port.



HP 300cm DP and USB Power Y Cable for L7010t, L7014t, L7016t (V4P94AA)  
HP Monitor Stand for L7010t, L7014, L7014t (T6N33AA)

Connected to an HP Retail System or PC without a 12 V powered USB port.



HP 300cm DisplayPort and USB B to A Cable for L7016t, L7014t, L7010t (V4P96AA)  
HP Monitor Stand for L7010t, L7014, L7014t (T6N33AA)  
HP 45 W Power Adapter (H6Y88AA)

## Recommended Options and Accesories

<p><b>HP Monitor Stand for L7010t, L7014, L7014t</b></p>		<p>Use the fixed-height stand to place your display in standalone configurations. Find a comfortable viewing position with adjustable tilt of -5° to +180°. Product Number: T6N33AA</p>
<p><b>HP Monitor Stand for L7016</b></p>		<p>Use the fixed-height stand to place your display in standalone configurations. Find a comfortable viewing position with adjustable tilt of -5° to +180°. Product Number: W0Q45AA</p>
<p><b>HP 700mm Cable Kit for CFD on RP9</b></p>		<p>Use the kit to attach your HP L7010t, L7014, L7014t, or L7016t Display to an HP RP9 Retail System as a customer-facing display. Product Number: V7S63AA</p>
<p><b>HP 300cm DP and USB Power Y Cable for L7010t, L7014t, L7016t</b></p>		<p>Use the cable to attach your HP L7010t, L7014t, or L7016t Display to an HP RP9 or HP RP5 Retail System through the USB Power connector in a standalone configuration. Product Number: V4P94AA</p>
<p><b>HP 300cm DP and USB Power Cable for L7014</b></p>		<p>Use the cable to attach your HP L7014 Display to an HP RP9 or HP RP5 Retail System through the USB Power connector in a standalone configuration. Product Number: V4P95AA</p>
<p><b>HP 300cm DP and USB B to A Cable for L7016t, L7014t, L7010t</b></p>		<p>Use the cable to attach your HP L7010t, L7014t, or L7016t to an HP RP5 Retail System without the 12v USB connector, HP Desktop Mini, or other desktop PC in a standalone configuration. The HP 45w Smart AC Adapter, part number H6Y88AA, is required to power the monitor. Product Number: V4P96AA</p>
<p><b>HP 300cm DP Cable for L7014</b></p>		<p>Use the cable to attach your HP L7014 to an HP RP5 Retail System without the 12v USB connector, HP Desktop Mini, or other desktop PC in a standalone configuration. The HP 45w Smart AC Adapter, part number H6Y88AA, is required to power the monitor. Product Number: V4P97AA</p>
<p><b>HP 45w Smart AC Adapter</b></p>		<p>Use the cable to power your HP L7010t, L7014, L7014t, or L7016t in a standalone monitor configuration when attached to your HP RP5 Retail System without the 12v USB power connector, an HP Desktop Mini, or other desktop PC. Product Number: H6Y88AA</p>

1. Sold separately. Service levels and response times for HP Care Packs may vary depending on your geographic location. Service starts on date of hardware purchase. Restrictions and limitations apply. For details, visit [www.hp.com/go/cpc](http://www.hp.com/go/cpc). HP Services are governed by the applicable HP terms and conditions of service provided or indicated to Customer at the time of purchase. Customer may have additional statutory rights according to applicable local laws, and such rights are not in any way affected by the HP terms and conditions of service or the HP Limited Warranty provided with your HP Product.

Learn more at  
[hp.com/go/POS](http://hp.com/go/POS)

To learn more about the HP RP9 Retail System visit  
[hp.com/us/en/retail-solutions/all-in-one-retail-systems](http://hp.com/us/en/retail-solutions/all-in-one-retail-systems)

© Copyright 2017 HP Development Company, L.P. The information contained herein is subject to change without notice. The only warranties for HP products and services are set forth in the express warranty statements accompanying such products and services. Nothing herein should be construed as constituting an additional warranty. HP shall not be liable for technical or editorial errors or omissions contained herein. ENERGY STAR is a registered trademark owned by the U.S. Environmental Protection Agency. To learn more, go to [hp.com](http://hp.com).

4AA6-4307ENW, September 2017.

