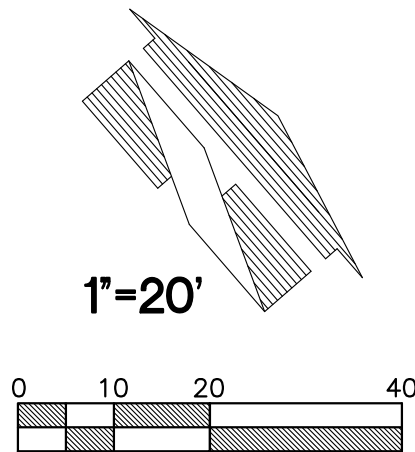
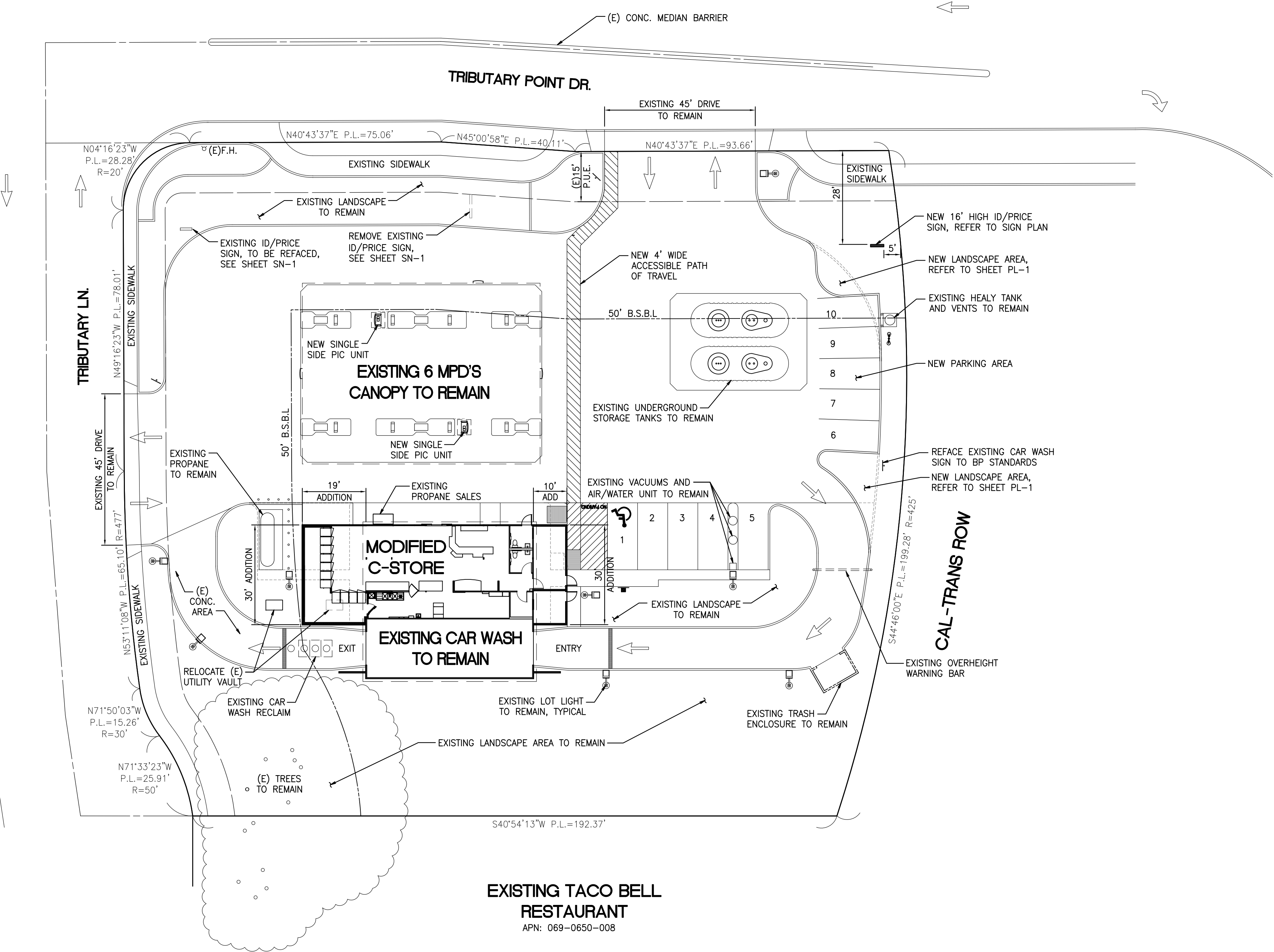


CONDITIONAL USE SITE PLAN

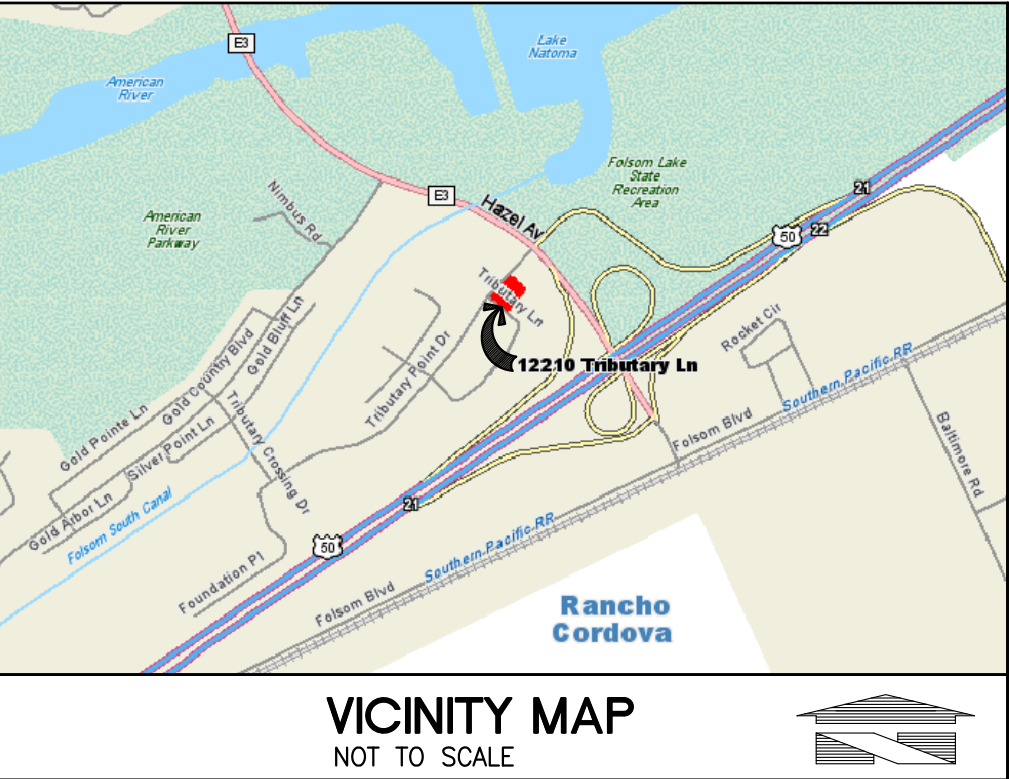


EXISTING CHEVRON FACILITY
APN: 069-0650-003

EXISTING McDONALDS
RESTAURANT
APN: 069-0650-006



EXISTING TACO BELL
RESTAURANT
APN: 069-0650-008



CLIENT:

bp

ARCO
BP WEST COAST PRODUCTS, LLC

BARGHAUSEN
CONSULTING ENGINEERS, INC.

18215 72ND AVENUE SOUTH
KENT, WA 98032
(425)251-6222
(425)251-8782 FAX

CIVIL ENGINEERING, LAND PLANNING,
SURVEYING, ENVIRONMENTAL SERVICES

NO.	DATE	REVISION DESCRIPTION
1		
2		
3		
4		
5		
6		
7		
8		
9		
10		
11		
12		

SITE DATA

SITE ADDRESS: 12210 TRIBUTARY LANE
RANCHO CORDOVA, SACRAMENTO COUNTY, CA 95670
APN: 069-0650-007-0000
GROSS LOT AREA: 1.03 ACRES (44,992 S.F.)

PARKING REQUIREMENTS

4.5/1000 S.F. GROSS FLOOR AREA

NEW C-STORE SIZE 2164 S.F. (SEE EQ-1 FOR S.F. BREAKDOWN)
EXISTING C-STORE HAS BEER AND WINE SALES AND IS OPEN 24 HOURS

LANDSCAPE REQUIREMENTS

10 SPACES REQUIRED
10 SPACES PROVIDED

30% - PARKING AREA SHADING REQUIRED
20% - OVERALL COVERAGE REQUIRED

SHEET INDEX

CU-1	CONDITIONAL USE SITE PLAN
PL-1	PRELIMINARY LANDSCAPE PLAN
EQ-1	REMODEL FLOOR PLAN
EQ-2	EQUIPMENT SCHEDULE
BLD-1	BUILDING ELEVATIONS
CN-1	CANOPY ELEVATIONS
SNA-1	SIGN SITE PLAN AND ELEVATIONS

DEVELOPMENT INFORMATION:

ARCO CONVERSION

SITE ADDRESS:
12210 TRIBUTARY ROAD
@ HAZEL AVENUE
RANCHO CORDOVA, CALIFORNIA

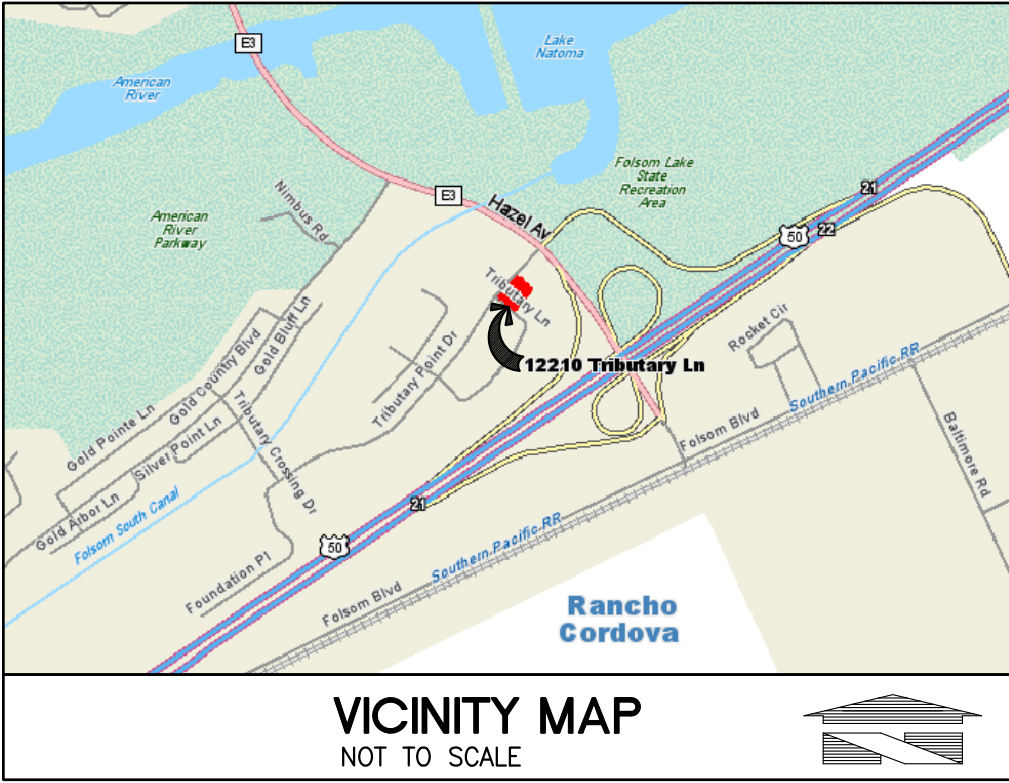
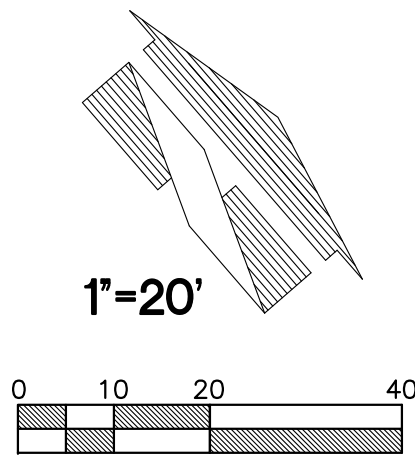
DESIGNED BY: ALLIANCE ZADON:
CHECKED BY: BP REP:
DRAWN BY: ALLIANCE PM:
VERSION: PROJECT NO:
14460

DRAWING TITLE:
SITE PLAN
03/16/10

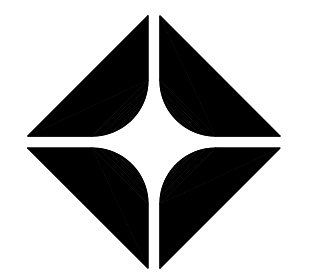
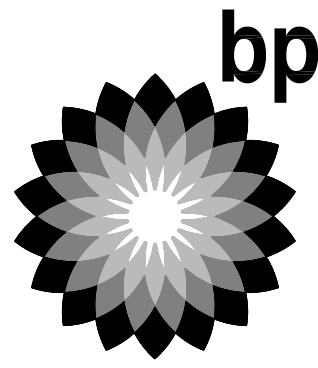
SHEET NO:

CU-1

PRELIMINARY LANDSCAPE PLAN



CLIENT:



BP WEST COAST PRODUCTS, LLC

LANDSCAPE NOTES

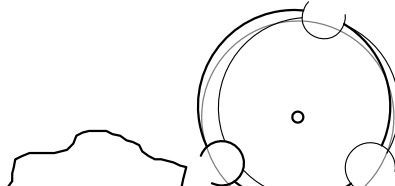





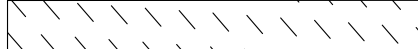
- UPON COMPLETION OF LANDSCAPING AND IRRIGATION THE LANDSCAPE ARCHITECT SHALL REVIEW THE PROJECT AND SUBMIT TO DEPARTMENT OF TRANSPORTATION, LANDSCAPE AND TREES SECTION OFFICE A CERTIFICATE OF COMPLIANCE, WHICH INDICATES THE LANDSCAPING AND IRRIGATION WAS INSTALLED IN CONFORMANCE WITH THE APPROVED PLANS AND SPECIFICATIONS. FINAL INSPECTION CANNOT OCCUR UNTIL THIS REQUIREMENT IS MET.
- CONTRACTOR IS REQUIRED TO GIVE THE LANDSCAPE ARCHITECT A MINIMUM OF 15 WORKING DAYS NOTICE PRIOR TO THE NEED FOR THE FINAL REVIEW FOR COMPLIANCE WITH THE APPROVED PLANS AND SPECIFICATION.
- THE CONTRACTOR SHALL OBTAIN A SOILS TEST PRIOR TO INSTALLATION OF LANDSCAPE MATERIALS. THE CONTRACTOR SHALL ALSO OBTAIN AN IRRIGATION SCHEDULE. COPIES OF BOTH THE SOILS TEST AND IRRIGATION SCHEDULE SHALL BE SUBMITTED TO THE DEPARTMENT OF TRANSPORTATION, LANDSCAPE AND TREES SECTION FOR APPROVAL, AT LANDSCAPE AND TREES SECTION, 906 G STREET SUITE 510, SACRAMENTO, CA 95814 AND BARGHAUSEN CONSULTING ENGINEER'S, INC. FINAL INSPECTION CANNOT OCCUR UNTIL THIS REQUIREMENT IS MET.
- A TREE PERMIT IS REQUIRED FOR REMOVAL AND/OR PRUNING OF ANY STREET TREE.

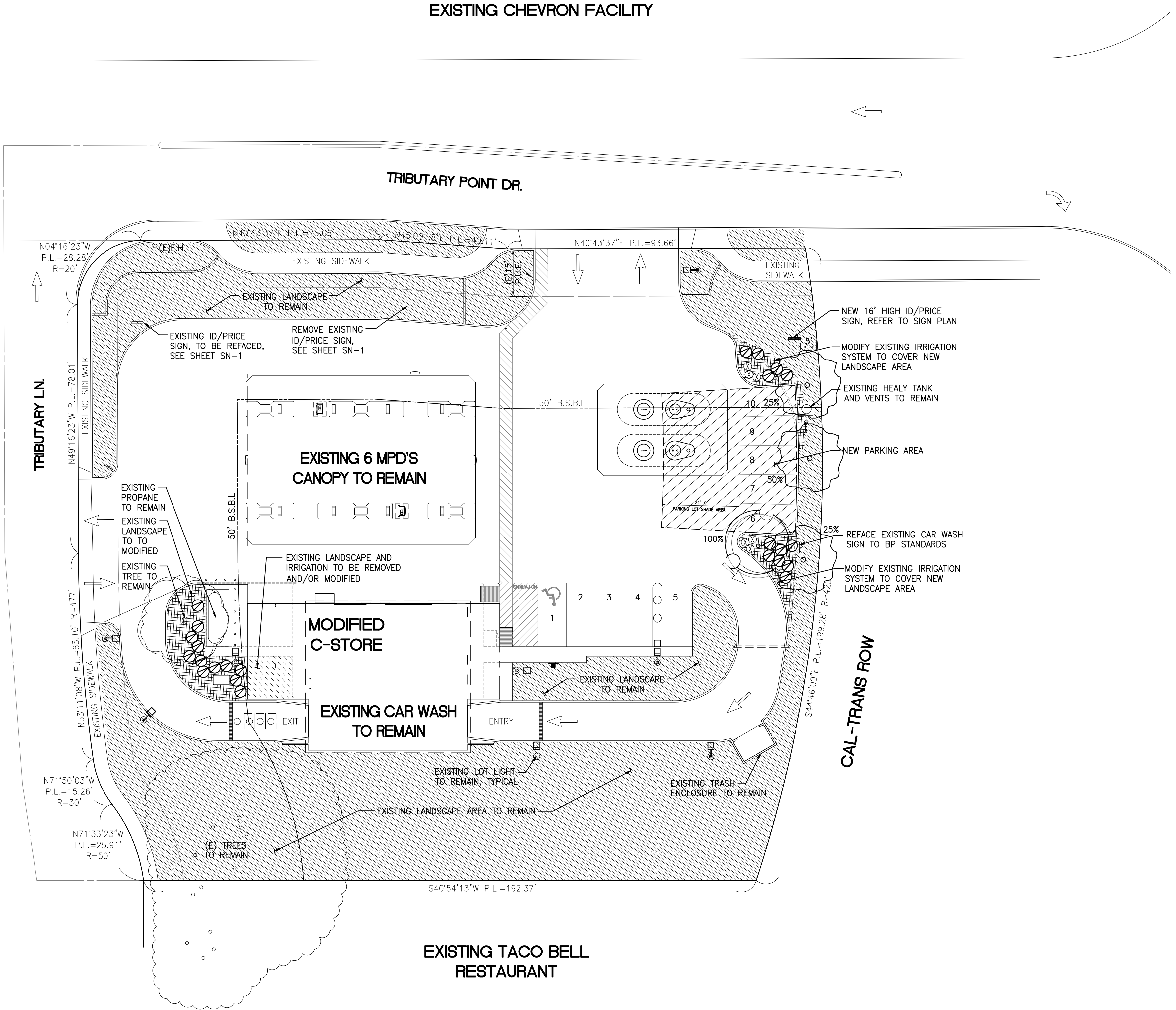
PARKING LOT SHADING CALCULATIONS


TOTAL PARKING AREA PAVING:	1,963 S.F.
TOTAL PARKING AREA SHADE REQUIRED:	590 S.F. (30%)
TOTAL PARKING AREA SHADE PROVIDED:	629 S.F. (32%)
(2) 25% CRAPE MYRTLE AT 79 S.F. EA. =	158 S.F.
(1) 50% CRAPE MYRTLE AT 157 S.F. EA. =	157 S.F.
(1) 100% CRAPE MYRTLE AT 314 S.F. EA. =	314 S.F.

 DENOTES PARKING LOT AREA TO BE SHADED

LANDSCAPE PLANT MATERIAL LEGEND

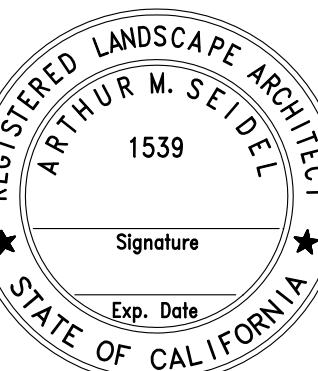
SYMBOL	BOTANICAL/COMMON NAMES	SIZE CONDITION	SPACING	QUANTITY	REMARKS
TREES:					
	LAGERSTROEMIA 'TUSCARORA' / NO COMMON NAME	24" BOX	AS SHOWN	1	STAKE & GUY ONE GROWING SEASON; NURSERY GROWN FOR STREET TREE USE
	EXISTING CRAPE MYRTLE TREE			3	TO REMAIN, SAVE, AND PROTECT
SHRUBS:					
	HEMEROCALLIS HYBRIDS / DAYLILY	1 GALLON	1.5' O.C.	6	YELLOW FLOWER
	RHAMNUS INDICA 'ENCHANTRESS' / ENCHANTRESS INDIA HAWTHORN	5 GALLON	4' O.C.	25	
GROUND COVERS:					
	MYOPORUM PARVIFOLIUM 'PROSTATUM' / NO COMMON NAME	FLAT	12" O.C.	AS REQ'D	THROUGH OUT PLANTING AREA
	EXISTING LANDSCAPE AND IRRIGATION				TO REMAIN, SAVE, AND PROTECT
	EXISTING LANDSCAPE AND IRRIGATION				TO BE REMOVED AND/OR MODIFIED





18215 72ND AVENUE SOUTH
KENT, WA 98032
(425)251-6222
(425)251-8782 FAX
CIVIL ENGINEERING, LAND PLANNING,
SURVEYING, ENVIRONMENTAL SERVICES

NO.	DATE	REVISION	DESCRIPTION
1			
2			
3			
4			
5			
6			
7			
8			
9			
10			
11			
12			

SEAL:


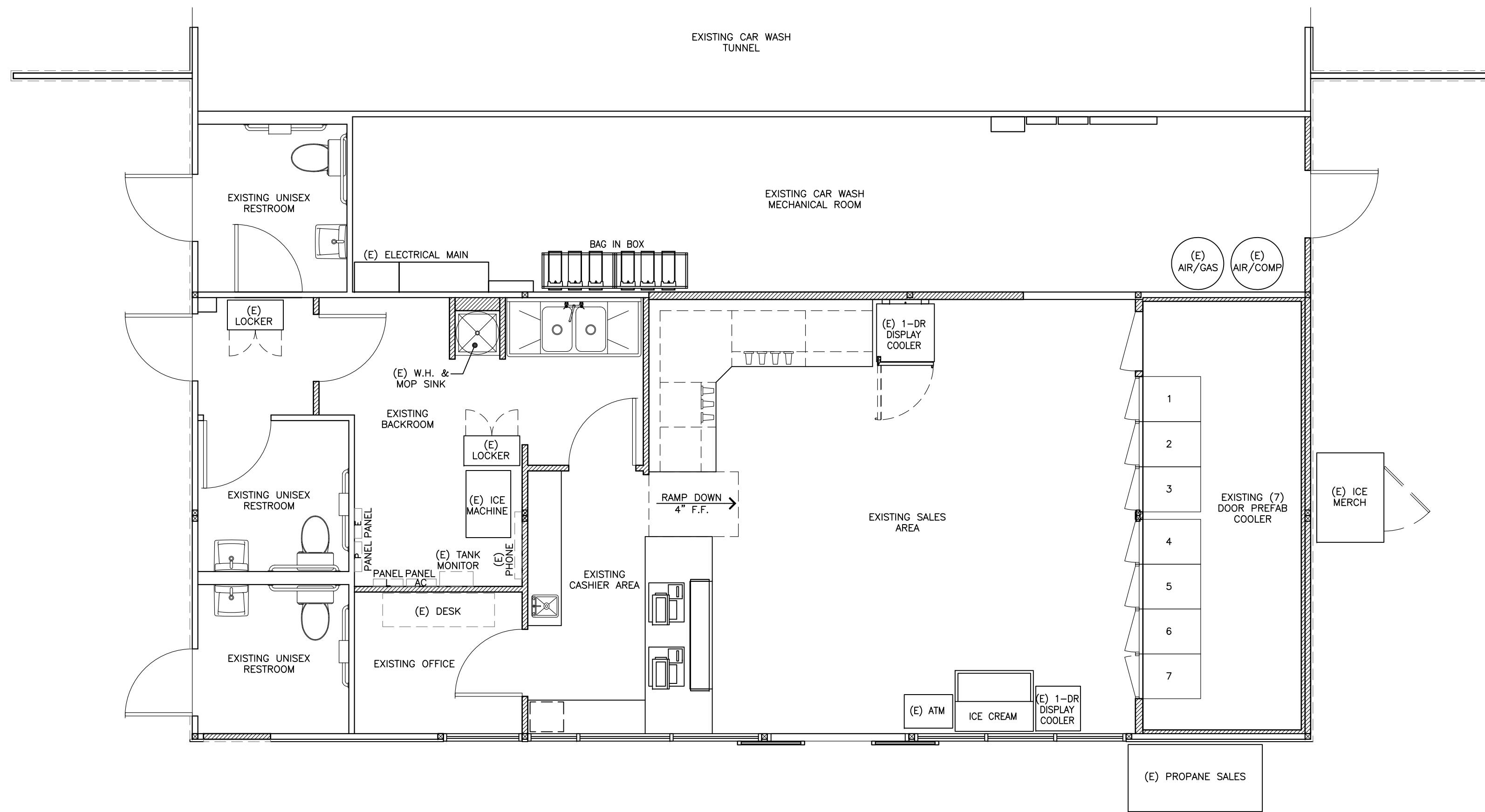
DEVELOPMENT INFORMATION:
ARCO CONVERSION

SITE ADDRESS:
**12210 TRIBUTARY ROAD
@ HAZEL AVENUE
RANCHO CORDOVA, CALIFORNIA**

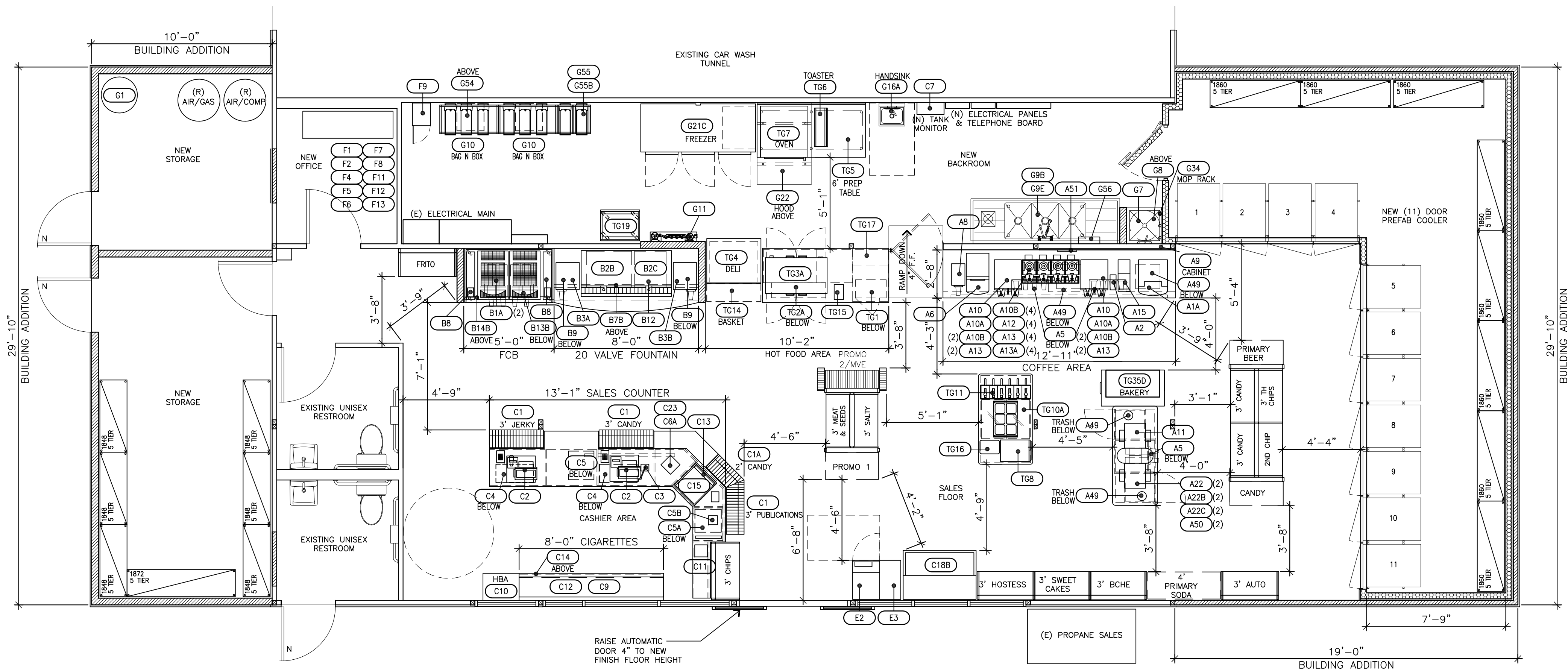
DESIGNED BY: AMS
CHECKED BY: DG
DRAWN BY: AMS
VERSION: -
ALLIANCE ZADN:
BP REP:
ALLIANCE PM:
PROJECT NO.: **14460**

DRAWING TITLE:
**PRELIMINARY
LANDSCAPE PLAN
03/16/10**

SHEET NO:
PL-1



EXISTING FIXTURE PLAN
SCALE: 1/4" = 1'-0"



PROPOSED FIXTURE PLAN
SCALE: 1/4" = 1'-0"

NO.	DATE	REVISION
	09/03/09	INITIAL SUBMITTAL FOR NANCY KNOTT REVIEW
1	09/23/09	SWAP CAPPUCCINO (A1A) AND ICE LATTE (A6), 8' CIGARETTES AND AREA CALCULATIONS
2	09/23/09	GONDOLA MERCHANDISE CHANGES
3	09/23/09	GONDOLA MERCHANDISE CHANGES
4	09/28/09	GONDOLA CHANGES
5	02/26/10	ENLARGED NEW STORAGE ADDITION AND RELOCATED CAR WASH EQUIPMENT PER OWNER COMMENTS
6	03/8/10	RAISED FLOOR IN SALES AREA TO MATCH EXISTING FLOOR HEIGHT IN CASHIER AND BACKROOM AREA AND ADDED EXISTING COLUMNS
7		
8		
9		
10		
11		

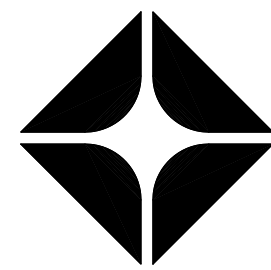
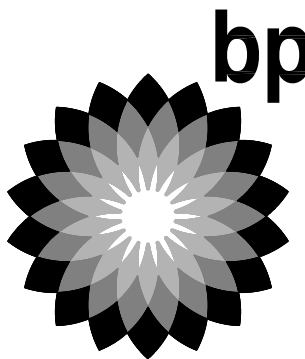
AREA CALCULATIONS

EXISTING CONVENIENCE STORE	= 1058 S.F.
MECHANICAL AREA CONVERTED BACKROOM	= 242 S.F.
CONVENIENCE STORE ADDITION	= 864 S.F.
TOTAL	= 2164 S.F.

NOTE:
THIS PLAN, AS SHOWN, HAS BEEN APPROVED BY BP MARKETING MANAGEMENT ON 09/29/2009.

ANY DEVIATION TO THIS PLAN NEEDS TO BE APPROVED THROUGH NANCY KNOTT, FORMAT DEVELOPMENT MANAGER, BP RETAIL MARKETING AND INCORPORATED INTO THE PERMIT DOCUMENTS. CONTACT FRANCHISEE FOR MORE DETAILS.

CLIENT:



BP WEST COAST PRODUCTS, LLC



18215 72ND AVENUE SOUTH
KENT, WA 98032
(425)251-6222
(425)251-8782 FAX

CIVIL ENGINEERING, LAND PLANNING,
SURVEYING, ENVIRONMENTAL SERVICES

NO.	DATE	REVISION	DESCRIPTION
1			
2			
3			
4			
5			
6			
7			
8			
9			
10			
11			

SEAL:

DEVELOPMENT INFORMATION:

ARCO CONVERSION

SITE ADDRESS:

12210 TRIBUTARY ROAD
@ HAZEL AVENUE
RANCHO CORDOVA, CALIFORNIA

DESIGNED BY: DBG ALLIANCE ZADN:

CHECKED BY: DBG BP REP:

DRAWN BY: JMW ALLIANCE PM:

VERSION: - PROJECT NO: 14460

DRAWING TITLE:

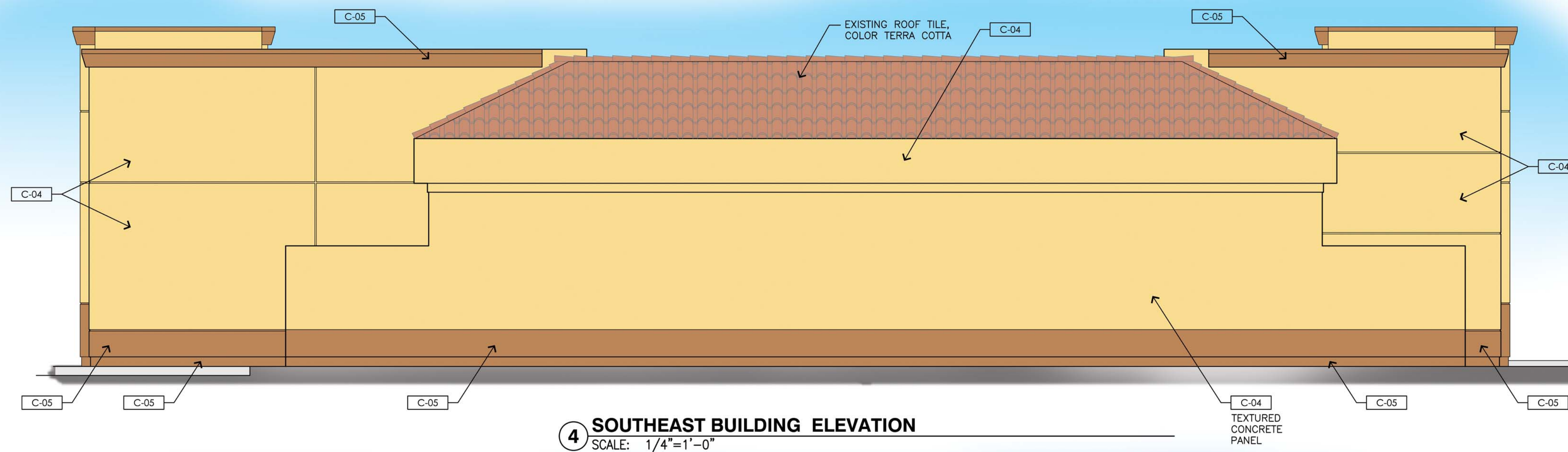
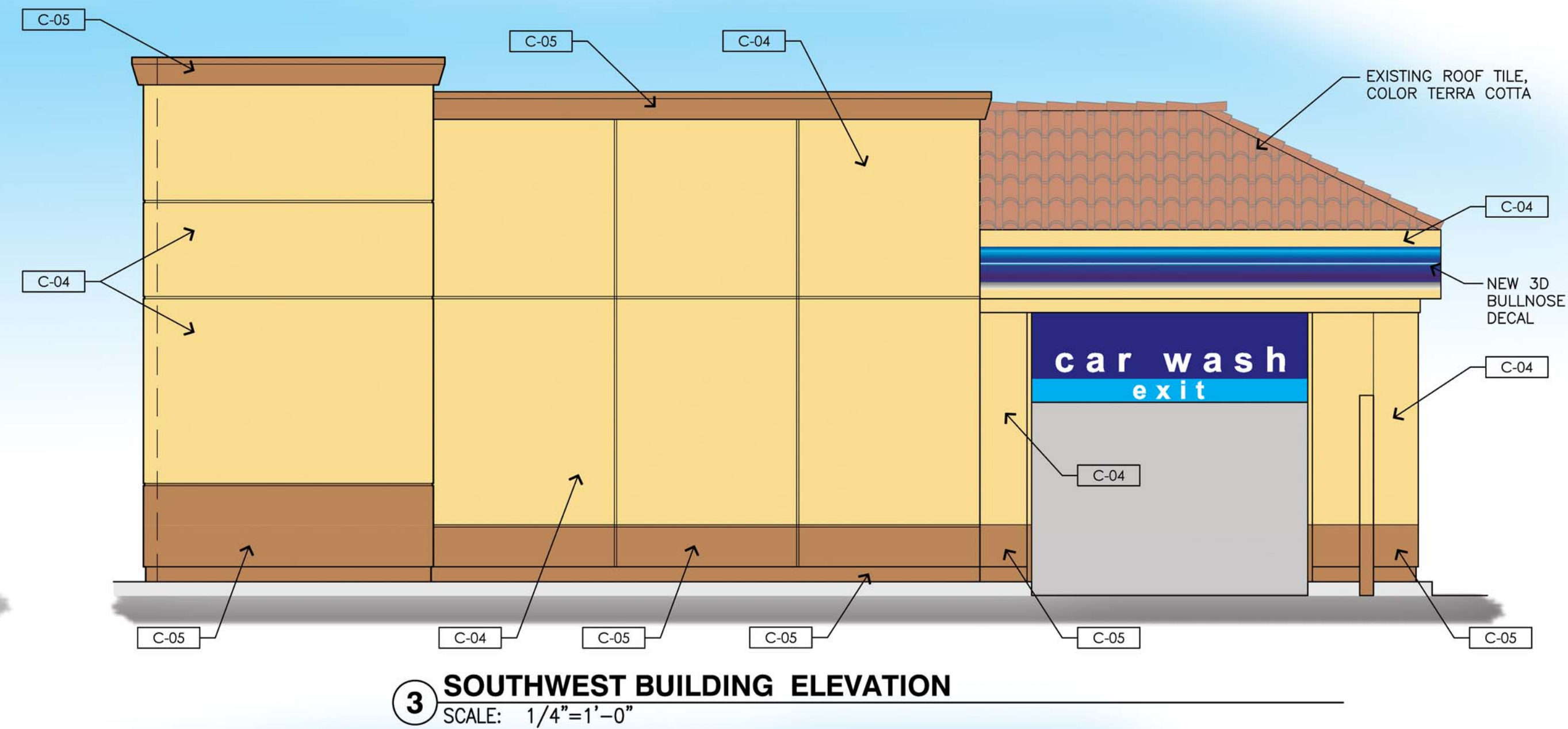
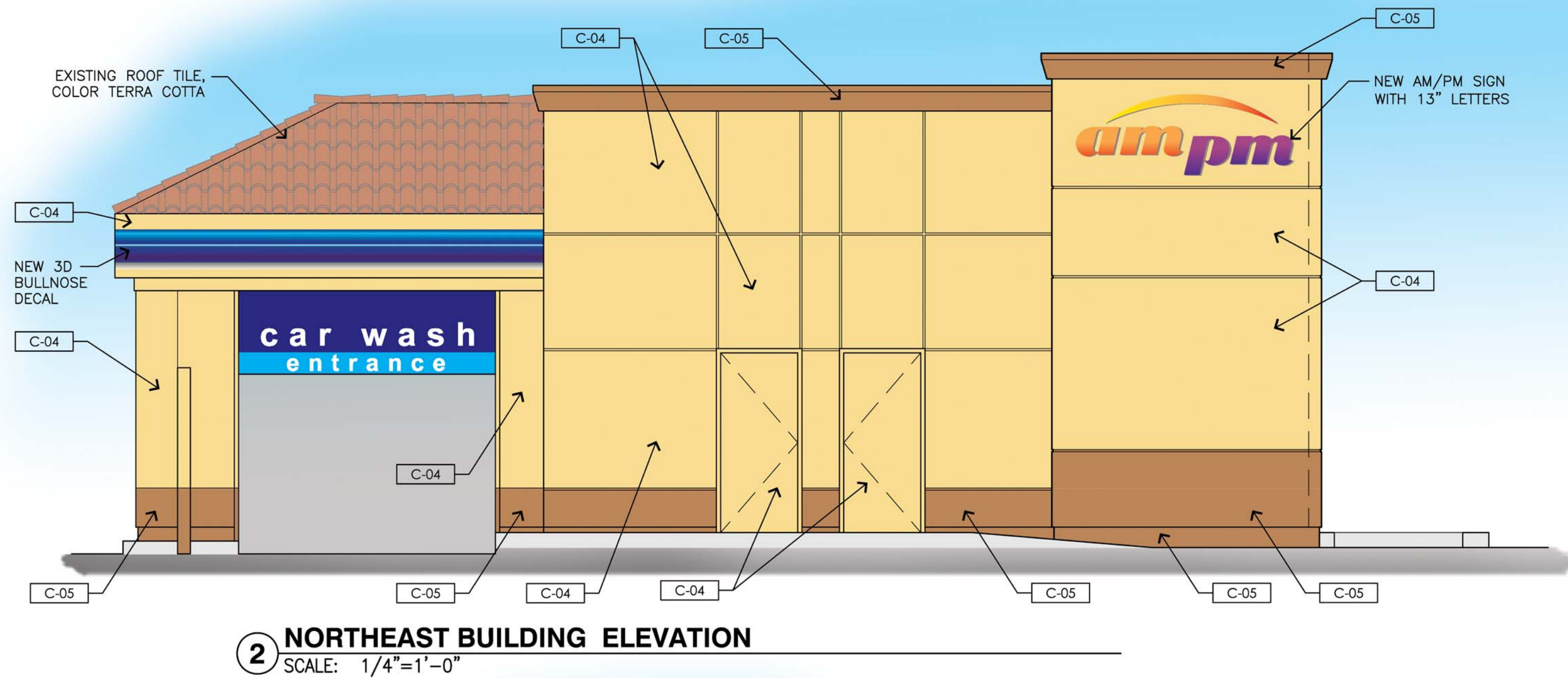
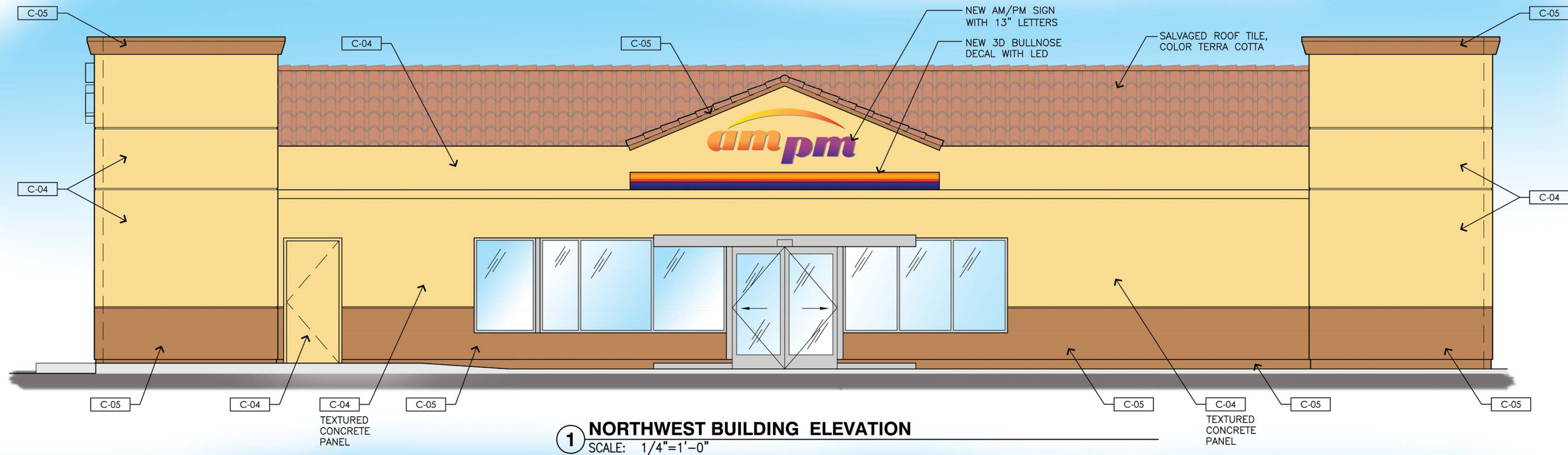
REMODEL
FLOOR PLAN
09/03/09

SHEET NO:

EQ1

Preliminary Not For Construction

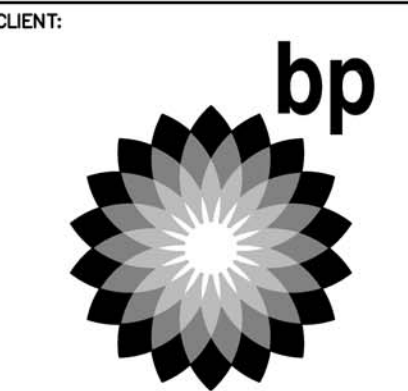
EQUIPMENT SCHEDULE																													
	EQUIPMENT					ELECTRICAL					PLUMBING			REMARKS		EQUIPMENT					ELECTRICAL					PLUMBING			REMARKS
	NO.	QTY	ITEM / DESCRIPTION	MANUFACTURER	MODEL NUMBER	V	PH	AMP	KVA	HP	SUPPLY		WASTE			NO.	QTY	ITEM / DESCRIPTION	MANUFACTURER	MODEL NUMBER	V	PH	AMP	KVA	HP	SUPPLY		WASTE	
											POC	SIZE														POC	SIZE		
COFFEE AREA	A1A	1	CAPPUCCINO MACHINE (5 heads)	BUNN	IMIX 55+ #38100.0003	120V		1	15	1.800		1/4"																UNIT WITH CORD & NEMA 5-15 PLUG	
	A2	1	TEA RACK	VENDOR																								NEW	
	A5	16	COFFEE CUP HOLDERS (Under Counter)	IMPRESSIONS / SHOPCO	#HDW-CUPDISP-C2410C18																							NEW	
	A6	1	ICED LATTE (4 HEAD)	BUNN	JDF-4	120V	1		9.5			3/8"																NEW	
	A8	1	ICED CUPHOLDER	PLASTICS & PRODUCTS	CLS-BP-718																							NEW	
	A9	1 LOT	COFFEE CABINETS	IMPRESSIONS / SHOPCO	MULTIPLE #'S - SEE CUT SHEETS																							NEW	
	A10	2	DUAL SOFT HEAT BREWER	BUNN	#27900.0038	120/208V	1	28.9	5.9			1/4"																UNIT WITH CORD & NEMA 5-15 PLUG	
	A10A	2	DUAL DRIP TRAY KITS	BUNN	#27150																							NEW	
	A10B	9	FAUCET COVERS	BUNN	COVER W/ DECALS #07187.0001																							NEW	
	A11	1	SKINNY SHORT COFFEE CONDIMENT ISLAND - 80"x30"	IMPRESSIONS/SHOPCO	#BP-COO-CCI-SK66, # BP-2 CCDPISS																							NEW	
	A12	4	SINGLE SOFT HEAT STAND	BUNN	#1 SH STAND 27825.0003	120V	1	.8	0.09																			UNIT WITH CORD & NEMA 5-15 PLUG	
	A13	8	SINGLE SOFT HEAT SERVER	BUNN	#SH SERVER 27850.0004																							NEW	
	A13A	4	ONE POSITION DRIP TRAY KIT	BUNN	#26830.0000																							NEW	
	A15	1	LATTE STEAMER	BUNN	#FMD-1 SET 00.0196	120V	1	15	1.800			3/8"																UNIT WITH CORD & NEMA 5-15 PLUG	
	A22	1	COFFEE CONDIMENT ORGANIZER	PLASTICS & PRODUCTS	#CCBP-SKINNY																							FOR CONDIMENT REGULAR	
	A22B	1	SYRUP RACK	PLASTICS & PRODUCTS	#SWST-98P																							FOR CONDIMENT REGULAR	
	A22C	1	JAVA JACKET HOLDER	PLASTICS & PRODUCTS	#JUBP-12																							FOR CONDIMENT REGULAR	
	A49	4	TRASH RECEPTACLE (BELOW COUNTER)	IMPRESSIONS/SHOPCO	19 GALLON(14x14x24)																							PROVIDED BY IMPRESSIONS	
	A50	2	NAPKIN HOLDER	WASSERSTROM	#H2000XC																							NEW	
A51	1	COFFEE TIMER	PRINCE CASTLE	#740-112PM	120V																						UNIT WITH CORD & NEMA 5-15 PLUG		
FOUNTAIN	B1A	2	FROZEN BEVERAGE DISPENSER	ICEE	FBD #563D (3) FLAVOR	208V	1	19.0			3/8"																	E.C. TO PROVIDE NEMA #L6-30R RECEPT.	
	B2A	1	FOUNTAIN ICE MAKER (CUBED)	MANITOWOC	#SY-1074C	120V	1	2.5			1/2"		1/2"															UNIT WITH CORD & NEMA 5-15 PLUG	
		1	W/ AUTOMATIC CLEANING SYSTEM	MANITOWOC	#AUCS	120V	1	.3																				UNIT WITH CORD & NEMA 5-15 PLUG	
	B2B	1	FOUNTAIN ICE MAKER (CRUSHED)	SCOTSMAN	#NME954RLS-1A	120V	1	15			1/2"		3/4"															UNIT WITH CORD & NEMA 5-15 PLUG	
	B2C	1	ICE MAKER REMOTE CONDENSING UNIT	MANITOWOC	#CVD-10B5	240V	1	12.5																				FOR ITEM #B2A	
	B2D	1	20' LINE KIT	MANITOWOC	#RT-20-R-404A																							FOR ITEM #B2A	
	B2E	1	ICE MAKER REMOTE CONDENSING UNIT	SCOTSMAN	#NME954RHS-A/C	240V	1	6.0		1/15																		FOR ITEM #B2B	
	B2F	1	20' LINE KIT	MANITOWOC	#RT-20-R-404A																							FOR ITEM #B2B	
	B3A	1	FOUNTAIN CUP AND LID DISPENSER (LEFT)	IMPRESSIONS	#BP-PR-F00-VCD-L																							NEW	
	B3B	1	FOUNTAIN CUP AND LID DISPENSER (RIGHT)	IMPRESSIONS	#BP-PR-F00-VCD-R																							NEW	
	B6	1	FOUNTAIN CABINETRY	IMPRESSIONS/SHOPCO	MULTIPLE #'S - SEE CUT SHEETS																							NEW	
	B7B	1	GRAPHIC DISPLAY BOARD - NON-ILLUMINATED	DURA COLOR	45"x96"																							NEW	
	B8	2	FCB LID/STRAW DISPENSER	ICEE	#788828																							NEW	
	B9	2	CABINET TRASH RECEPTACLE	IMPRESSIONS/SHOPCO	INCLUDED IN FTN																							NEW	
	B12	1	20-VALVE ICE/BEVERAGE DISPENSER	SERVEND/MANITOWOC	#MDH-402-20 IC 20PB QT/ KITS Q1/SL3/CL5	120V						1/2"		3/4"														UNIT WITH CORD & NEMA 5-15 PLUG	
	B13B	1	60" FCB CART	IMPRESSIONS/SHOPCO	#BP-F00-FCB60																							ON CASTERS	
	B14B	1	FCB GRAPHIC FOR 60" CART - NON-ILLUMINATED	DURA COLOR	60"x45"																							NEW	
	CASHIER	C1	3	CASHIER CABINET W/ IMPULSE SHELVING - 3'-0"	IMPRESSIONS/SHOPCO																								NEW
		C1A	1	CASHIER CABINET W/ IMPULSE SHELVING - 2'-0"	IMPRESSIONS/SHOPCO																								NEW
C2		2	CASH REGISTERS/POS	RADIANT	STANDARD	120V	1	15																				UNIT WITH CORD & NEMA 5-15 PLUG	
C3		1	INTERCOM TO FUEL POSITIONS	3M	#D-120VPART # 78-6911-4796-7 SERIAL # 2470011634, 78-8117-3900-8, w/4 station card	120V																						NEW	
C4		2	UNDER-COUNTER CIGARETTE DRAWER	IMPRESSIONS/SHOPCO	#BP-S00-CIGCPU34A/TBD																							NEW	
C5		1	SAFE - CASH VALIDATOR	NKL	#V2C CONTROLLER AUTOBANK	120V	1	15																				UNIT WITH CORD & NEMA 5-15 PLUG	
C5A		1	SAFE - COIN DROP	NKL	#D8C AUTOBANK	120V	1	15																			UNIT WITH CORD & NEMA 5-15 PLUG		
C5B		1	KEYPAD	NKL	#EPR																						NEW		
C5D		1	PRINTER	NKL	#OM-100	120V	1	15																			UNIT WITH CORD & NEMA 5-15 PLUG		
C6A		1	LOTTO TERMINAL	STATE LOTTERY COMMISSION		120V	1	15																				UNIT WITH CORD & NEMA 5-15 PLUG	
C7		1	TANK MONITOR EQUIPMENT	VEEDERROOT	VR-TLS 350	120V	1	15																				UNIT WITH CORD & NEMA 5-15 PLUG	
C9		1 LOT	SLAT WALL & END PANEL	IMPRESSIONS/SHOPCO	MULTIPLE #'S - SEE CUT SHEETS																							NEW	
C10		1 LOT	SMOKELESS TOBACCO BACK BAR RACKING	AMERICAN DISPLAY/PHILIP MORRIS	VENDOR																							NEW	
C11		1 LOT	CASHIER COUNTER	IMPRESSIONS/SHOPCO	MULTIPLE #'S - SEE CUT SHEETS																							NEW	
C12		1 LOT	CIGARETTE BACK BAR RACKING	AMERICAN DISPLAY	VENDOR																							NEW	
		1 LOT	2' TOP SIGN LARGE	AMERICAN DISPLAY	VENDOR																							NEW	
		1 LOT	2' WATERFALL SHELVES	PHILIP MORRIS	VENDOR																							NEW	
		1 LOT	2' 4 SHELF PACK MODULESPACK SHELVES	PHILIP MORRIS	VENDOR																							NEW	
		1 LOT	2' TOBACCO SHELF	PHILIP MORRIS	VENDOR																							NEW	
	1 LOT	ACCESSORIES KIT	AMERICAN DISPLAY/PHILIP MORRIS	VENDOR																							NEW		
C13	1	LOTTO FORM HOLDER	LSI	#385174																									



- EXTERIOR PAINTS**
- C-01** COLOR: BP PEARL
- ICI PAINTS, ORDER #A0083, SPECIFY #38YY 72/117, "INDIAN LEGEND"
- SHERWIN WILLIAMS, SW6119, "ANTIQUE WHITE"
- BENJAMIN MOORE, OC-8, "ELEPHANT TUSK"
 - C-02** COLOR: BP DARK PEARL
- ICI PAINTS, ORDER #A0767, SPECIFY #30YY 52/207, "DESERT VALLEY"
- SHERWIN WILLIAMS, SW6121, "WHOLE WHEAT"
- BENJAMIN MOORE, HC-24, "PITTSFIELD BUFF"
 - C-04** COLOR: ampm TAN
- ICI PAINTS, ORDER #A0717, SPECIFY #20YY 65/285, "INDIAN CORN"
- SHERWIN WILLIAMS, SW6380, "HUMBLE GOLD"
- BENJAMIN MOORE, 2160-50, "OKLAHOMA WHEAT"
 - C-05** COLOR: ampm DARK TAN
- ICI PAINTS, ORDER #A1761, SPECIFY #00YY 37/221, "ONIONSKIN TAN"
- SHERWIN WILLIAMS, SW0010, "WICKERWORK"
- BENJAMIN MOORE, HC-47, "BROOKLINE BEIGE"
 - C-11** COLOR: HIGH HIDING WHITE
- ICI PAINTS, ORDER #A0128, SPECIFY #50GY 83/010, "WHITE WING"
- SHERWIN WILLIAMS, SW7006, "EXTRA WHITE"
- BENJAMIN MOORE, OC-67, "ICE MIST"
 - C-14** COLOR: BP YELLOW
- ICI PAINTS, ORDER #A0775 SPECIFY #37YY 61/867, "OMEGA YELLOW"
- SHERWIN WILLIAMS, SW6903, "CHEERFUL"
- BENJAMIN MOORE, 2022-10, "YELLOW"

NOTE:
THIS PLAN, AS SHOWN, HAS BEEN APPROVED BY BP's AREA DEVELOPMENT MANAGER, AS REPRESENTING COMPLIANCE WITH THE ARCO FRANCHISEE PROGRAM: AREA DISTRICT MANAGER (ADM): SONYA BRANSON DATE: MARCH 30, 2010

ANY DEVIATION TO THIS PLAN NEEDS TO BE APPROVED THROUGH BP's AREA DEVELOPMENT MANAGER AND INCORPORATED INTO THE PERMIT DOCUMENTS. CONTACT FRANCHISEE FOR MORE DETAILS.



18215 72ND AVENUE SOUTH
KENT, WA 98032
(425)251-6222
(425)251-8782 FAX

CIVIL ENGINEERING, LAND PLANNING,
SURVEYING, ENVIRONMENTAL SERVICES

NO.	DATE	REVISION DESCRIPTION
1		
2		
3		
4		
5		
6		
7		
8		
9		
10		
11		
12		

SEAL:

DEVELOPMENT INFORMATION:

ARCO CONVERSION

SITE ADDRESS:
12210 TRIBUTARY ROAD
@ HAZEL AVENUE
RANCHO CORDOVA, CALIFORNIA

DESIGNED BY: ALLIANCE ZADON
CHECKED BY: BP REP:
DRAWN BY: ALLIANCE PM:
VERSION: PROJECT NO: 14460

DRAWING TITLE:
BUILDING ELEVATIONS

SHEET NO:

BLD-1

NOTE:
THIS PLAN, AS SHOWN, HAS BEEN APPROVED BY BP's
AREA DEVELOPMENT MANAGER, AS REPRESENTING
COMPLIANCE WITH THE ARCO FRANCHISEE PROGRAM:
AREA DISTRICT MANAGER (ADM): SONYA BRANSON
DATE: MARCH 30, 2010

ANY DEVIATION TO THIS PLAN NEEDS TO BE APPROVED
THROUGH BP's AREA DEVELOPMENT MANAGER AND
INCORPORATED INTO THE PERMIT DOCUMENTS.
CONTACT FRANCHISEE FOR MORE DETAILS.



BP WEST COAST PRODUCTS, LLC



18215 72ND AVENUE SOUTH
KENT, WA 98032
(425)251-6222
(425)251-8782 FAX

CIVIL ENGINEERING, LAND PLANNING,
SURVEYING, ENVIRONMENTAL SERVICES

NO.	DATE	REVISION DESCRIPTION
1		
2		
3		
4		
5		
6		
7		
8		
9		
10		
11		
12		

SEAL:

DEVELOPMENT INFORMATION:

ARCO CONVERSION

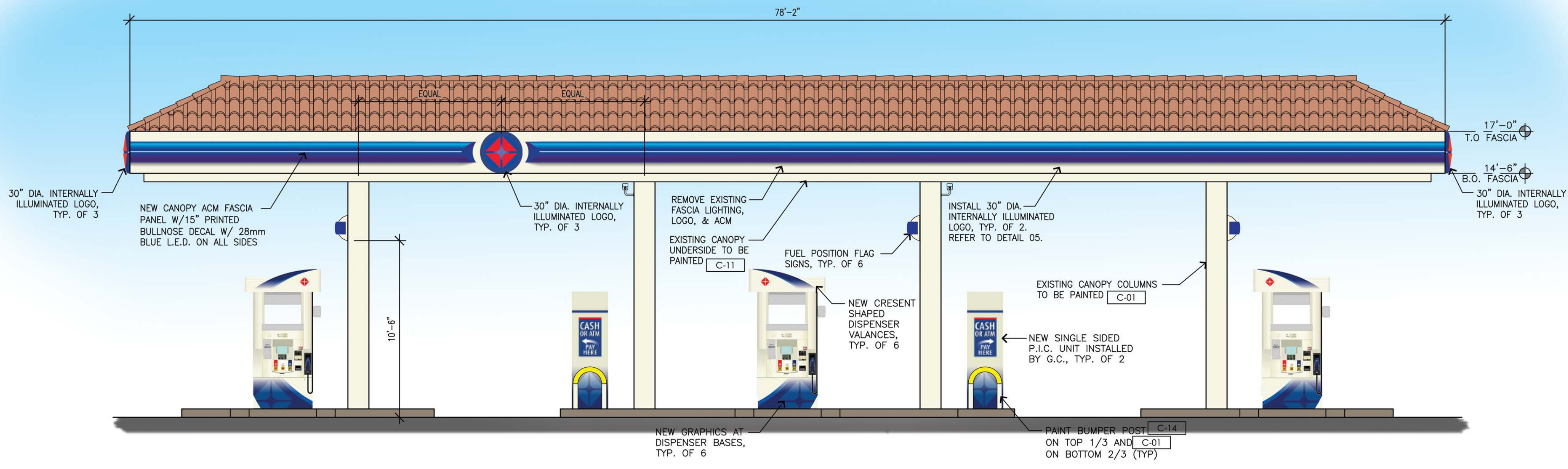
SITE ADDRESS:
12210 TRIBUTARY ROAD
@ HAZEL AVENUE
RANCHO CORDOVA, CALIFORNIA

DESIGNED BY: ALLIANCE ZADON:
CHECKED BY: BP REP:
DRAWN BY: ALLIANCE PM:
VERSION: PROJECT NO:
14460

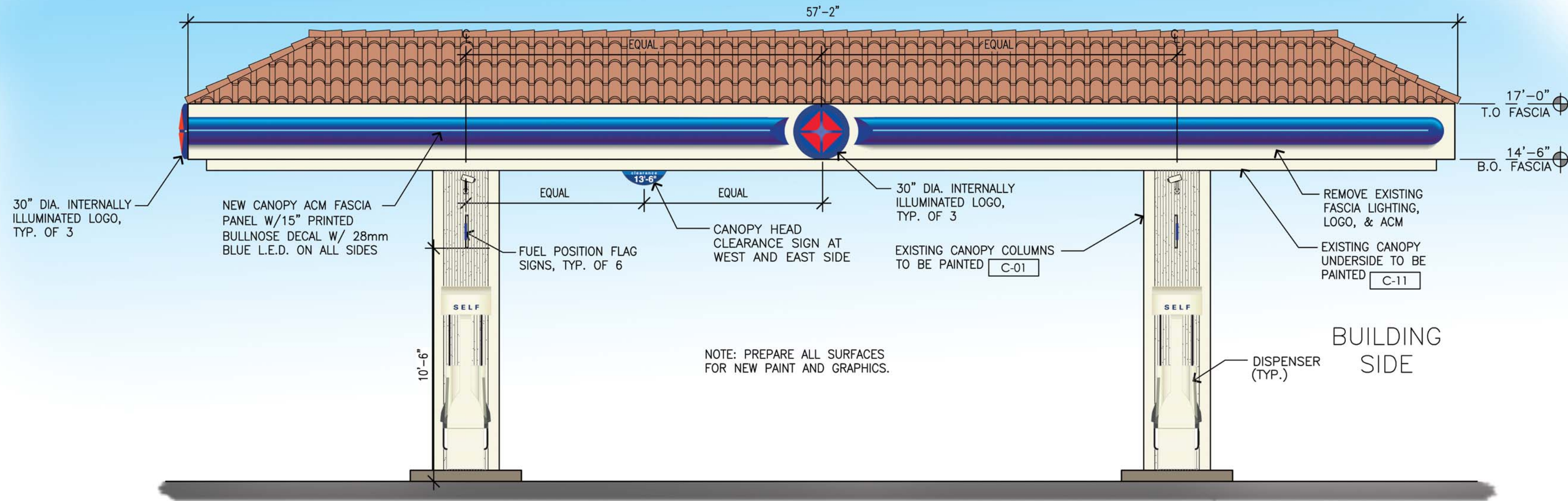
DRAWING TITLE:
CANOPY ELEVATIONS

SHEET NO:

CN-1



1 NORTHWEST (TRIBUTARY POINT DRIVE) CANOPY ELEVATION
SCALE: 1/4"=1'-0" NORTHEAST ELEVATION SIMILAR W/O ARCO SPARK



2 SOUTHWEST (TRIBUTARY LANE) CANOPY ELEVATION
SCALE: 1/4"=1'-0" NORTHEAST ELEVATION SIMILAR

EXTERIOR PAINTS

- C-01 COLOR: BP PEARL
- ICI PAINTS, ORDER #A0083, SPECIFY #38YY 72/117, "INDIAN LEGEND"
- SHERWIN WILLIAMS, SW6119, "ANTIQUE WHITE"
- BENJAMIN MOORE, OC-8, "ELEPHANT TUSK"
- C-02 COLOR: BP DARK PEARL
- ICI PAINTS, ORDER #A0767, SPECIFY #30YY 52/207, "DESERT VALLEY"
- SHERWIN WILLIAMS, SW6121, "WHOLE WHEAT"
- BENJAMIN MOORE, HC-24, "PITTSFIELD BUFF"
- C-04 COLOR: ampm TAN
- ICI PAINTS, ORDER #A0717, SPECIFY #20YY 65/285, "INDIAN CORN"
- SHERWIN WILLIAMS, SW6380, "HUMBLE GOLD"
- BENJAMIN MOORE, 2160-50, "OKLAHOMA WHEAT"
- C-05 COLOR: ampm DARK TAN
- ICI PAINTS, ORDER #A1761, SPECIFY #00YY 37/221, "ONIONSKIN TAN"
- SHERWIN WILLIAMS, SW0010, "WICKERWORK"
- BENJAMIN MOORE, HC-47, "BROOKLINE BEIGE"
- C-11 COLOR: HIGH HIDING WHITE
- ICI PAINTS, ORDER #A0128, SPECIFY #50GY 83/010, "WHITE WING"
- SHERWIN WILLIAMS, SW7006, "EXTRA WHITE"
- BENJAMIN MOORE, OC-67, "ICE MIST"
- C-14 COLOR: BP YELLOW
- ICI PAINTS, ORDER #A0775 SPECIFY #37YY 61/867, "OMEGA YELLOW"
- SHERWIN WILLIAMS, SW6903, "CHEERFUL"
- BENJAMIN MOORE, 2022-10, "YELLOW"

