

PREMIUM BOOK



NOV. 3-11, 2023 // TULSA, OKLAHOMA
WWW.COLORBREEDCONGRESS.COM

PtHA Mission Statement

- To improve, promote and enhance the Pinto horse, pony, miniature and Utility horse and Long Ear
- To collect, record and preserve Pinto pedigrees and Pinto competition records
- To represent the multifaceted world of Pinto ownership: breeding, competition and pleasure
- To provide beneficial services that support and encourage Pinto ownership and participation
- To educate by providing materials, programs and services that allows PtHA to be a resource organization in the equine industry
- To promote the continued growth of PtHA through good horsemanship and good sportsmanship

PtHA Sportsmanship Conduct Rule

• UNSPORTSMANLIKE CONDUCT or any other form of misconduct that is irresponsible, illegal, indecent, profane, intimidating, threatening or abusive is prohibited. This provision applies to:

1. PtHA members, non-members, exhibitors, trainers, owners, owner representatives, spectators and all other persons on the show grounds of a PtHA-approved event; and
2. PtHA members on the show grounds of an event held in conjunction with a PtHA-approved event; and
3. PtHA members on the show grounds of an event during which a PtHA-approved class is held regardless of whether the conduct is associated with or occurs during a PtHA-approved class.

Show management may immediately expel individuals exhibiting unsportsmanlike conduct from show grounds and shall file a written report with PtHA concerning the conduct in question.

PtHA Animal Welfare Statement

Every Pinto shall, at all times, be treated humanely and with dignity, respect and compassion. This prohibition against inhumane treatment applies to PtHA members and non-members.

1. PtHA members may be held responsible for the actions of their trainers, agents, representatives and/or employees. For violation of this rule, an individual may be disciplined, suspended, fined, denied PtHA privileges, disqualified, expelled from show grounds and/or expelled from PtHA.
2. The standard by which conduct or treatment will be measured is that which a reasonable person, informed and experienced in generally accepted equine care, training and exhibition procedures or veterinary standards, would determine to be cruel, abusive or inhumane.

Arrival	
Arrival	7
Departure	7
Required Health Documents	7
All equines must have	7
Cash for Color	18
Challenge Classes	18
Check-In Procedures	
Checkpoints	8
Campers and Motor Homes	8
Show Services	8
Class Information	
Classes Requiring a Hand Gallop	20
Amateur Walk/Trot Classes	20
Youth Walk/Trot, 10&U, Division Classes	20
Youth Walk/Trot, 11-18, Division Classes	20
Amateur / Non-Pro	20
Novice	20
Class/High Point Tabulation Rules	36
Class Schedule	41
Color Breed Congress® Information	
Color Breed Cash Challenge Classes	22
NSBA Classes	22
Participation/Membership Requirements	22
Registration	22
Leases	22
Transfer of Ownership	22
Long Ear Show	22
Color Breed Congress® Rules	
General Rules and Regulations	25
Responsibility and Liability	25
Errata	25
Photography and Videography	25
Television and Media	25
Announcement Requests	25
Contact Information	
Contact Information & Office Hours	5
Shipping	5
Lost and Found	5
Horse Show Office Hours	5
Stall Office Hours	5
Back Number Lamination	5
Fee Schedule	38
Entry Information	
Post Entries	27
Entry Submission	27
Payback	27
Adding/Scratching/Substituting Classes	27
Substituting Horse or Rider	27
Cancellation of Entries/Stalls	27
Fees	27
Facility Rules	
Alcohol	37
Dogs and Pets	37
Fire Safety	37
Golf Carts and Scooters	37
Parking/Trailer Parking	37
Security	37
Signs/Advertisements	37
High Point Award List	16
Hotels	10
Long Ear Futurity	24
Map	14
Judges	20
Paddock Procedures	
Gate Rule	33
Class Conflict	33
Split Classes/Preliminaries	33
Rail Classes Timer	33
Tack Changes	33
Working Order	33
Schedule Legend	41
Show Rules	
Admission to the Arena	28
Arena Gate Calls	28
Attire	28
Breaks	28
Class Placings	28
Commercial Exhibits/Vendors	28
Disqualification	31
Drug Declaration	31
Electronic Devices	31
Exercise Longeing	31
Exhibitor Back Numbers	31
Equipment Judges	31
Health Requirements	31
Patterns	31
Protests	31
Results Posting	31
Inhumane Treatment	31
Secure Trailer Lot	33
Show Office	33
Veterinarian	33
Stall Information	22&25
Stall Fees	22
Stall Reservations	22
Move In	22
Move Out	22
Feed & Bedding	22
Soiled Bedding	25
Removing Panels/Damages	25
Safety	25
Stall Decorations	25
Wash Racks	25
Stall Mat Rental	25



ADVENTURE JUST MET ITS MATCH.

SO DID FUN, ATMOSPHERE AND CULTURE.

Once "The Oil Capital of the World," T-Town is now rich in resources like countless outdoor and indoor attractions enjoyed by any age with Gathering Place and Greenwood Rising, a world-class music scene including the new Bob Dylan Center® and The Church Studio and a delicious dining scene. Throw in the coolest 28-mile stretch of Route 66 and Tulsa really is the city of everything you could ask for... and more.

Contact Information / Office Hours

Color Breed Congress® Show entries and stall reservations should be mailed to:

Pinto Horse Association
Congress Show Entry
7330 NW 23rd Street
Bethany, OK 73008

Email to: congress@pinto.org
Fax number: 405-787-0773
Phone number: 405-491-0111

Entries and stalls may be paid by personal check, money order, VISA, Mastercard, Discover, or American Express.

All checks are deposited and all credit cards are ran on the day we receive them.

All entries and stall reservations must be postmarked by October 5, 2023 in order to pay the pre-entry fees.

For Shipping and Mailing DURING the show:

Tulsa Expo Square
Color Breed Congress
C/O (your name)
4000 E. 15th Street
Tulsa, OK 74112

Lost and Found

Lost and found items should be turned in or claimed at the Horse Show Office.

Horse Show Office Hours – Ford Livestock Exhibit Hall

Wednesday, Nov. 1 • noon – 6 pm

Thursday, Nov. 2 • 8 am – 6 pm

Friday, Nov. 3 – Saturday, Nov. 11 • 7 am – 6 pm

NOTE: Entries for the following day's classes will ONLY be accepted until 6 pm each day.

Stall Office Hours – Expedition Barn

Open 24 hours per day beginning Wednesday, Nov. 1 at noon.

Back Number Lamination – at ID Station

Exhibitors can get their back numbers laminated for only \$2 per back number. The money raised from laminating supports the Pinto Heritage Foundation scholarship program.

CONGRESS COPY

Pick up your copy at the Show Office, Stalling Office, Hospitality Room, ID Station or Pinto Place each day! Hurry, they go fast!

Don't lose track of time and miss out on the fun at the Color Breed Congress! The daily *Congress Copy*, produced by the *Pinto Horse* magazine staff, keeps you up-to-date with the daily schedule, photos, exhibitor stories, upcoming events and much more.

BILLKNIGHT

FORD

Oklahoma's #1 Volume Ford Dealer

Proud Sponsor of the Color Breed Congress Show



BillKnightFord.com

9607 South Memorial
918-526-2400

#1 BASED ON 2022 TOTAL RETAIL NEW VEHICLE VOLUME SALES REPORT FROM FORD.

ARRIVAL

The barns will open at noon, Wednesday, Nov. 1. ABSOLUTELY NO ARRIVALS WILL BE ACCEPTED PRIOR TO THIS TIME. All equine must have their health certificates and Coggins papers checked.

DEPARTURE

All facilities must be vacated by noon, Sunday, November 12.

Required Health Documents

To comply with Oklahoma state animal health regulations and to ensure the health of your equine, the following requirements will be strictly enforced for all equine at the Color Breed Congress®

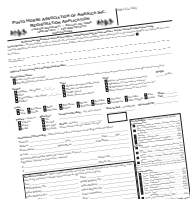
All equine must have a:

1. A 12-month Negative Coggins test. The State of Oklahoma Department of Animal Health Division requires a negative Coggins Test, showing said animal to be negative to either AGID or ELISA test for EIA within 12 months prior to show date, must accompany all equines. Foals, 6 months of age and under are exempt from this requirement if accompanied by their negative tested dam. Date and results of this test must be shown on the health certificate. Test result papers should include animals REGISTERED NAME (rather than barn names) and MARKINGS.

2. 30-day Health Certificate are required for all equine entering the Expo Square facility. The State of Oklahoma Department of Animal Health Division requires that all equine must be accompanied by an official health certificate dated within 30 days prior to arrival onto the show grounds by a licensed veterinarian from the state of origin.

An inspector will review all Coggins test and health papers before any equine is admitted onto the horseshow grounds. Any equine arriving without a negative Coggins test and Health Papers will be quarantined until released by the show veterinarian. All tests will be at the owner's expense. Make sure and bring your stamped Health Certificate and Coggins papers to the Show Office in order to get your show packet. **All health papers must be printed on paper; no pictures on phones will be accepted.**

Not registered Pinto yet?



To register your Pinto, complete the Registration application and mail it with your entries. Applicable rush fees will apply for PTHA® registrations after October 5, 2023.

Entry confirmation letters will be mailed by the end of October!



The pre-entry deadline is October 5th

CHECK-IN PROCEDURES

IMPORTANT: Absolutely no animals will be allowed onto the show grounds until noon, Wednesday, Nov. . Especially on the first move-in day, there could be a line of trailers at the first check point, this line usually moves quickly, but please be patient while the health inspectors move as quickly as possible.

Checkpoint #1 - Stalling Office, Expedition Barn. Take health and Coggins papers to the stall office. All papers must be stamped. **No electronic papers accepted. Must be printed on paper.**

Checkpoint #2 - After promptly unloading your trailer, please move your trailer to the designated secured trailer parking area North of the Explorer Barn so other people may unload.

Checkpoint #3 - Show Office, lower level of the Ford Truck Arena. Bring your stamped health papers, to the show office and pick up your Show Packet that contains back numbers, class lists and other vital information.

CAMPERS AND MOTOR HOMES

The Color Breed Congress® offers two options for RVs.

- For the standard RV Park, complete the RV Park Reservation form and send to the Expo Square. Please contact Expo Square at (918) 744-1113 ext. 2154 for more information.
- For VIP RV Park Reservations, complete the VIP RV Reservation form and send to the PtHA® Office. Please contact the PtHA® Office at (405) 491-0111 ext. 2100 for more information.
 - Spaces in the VIP RV lot, south of the Oklahoma Ford Dealers Barn and north of the Bronco Barn include electricity, water and sewer hook-ups (some sewer hook-ups will have to be shared, so bring a splitter).
 - Limited number of spaces available. These spots are offered on a first come, first serve basis.

WARNING

- **If an individual wishes to sell or advertise tack, clothing, jewelry, furniture or any miscellaneous merchandise, a signed vendor contract must be on file with PtHA®. In addition, the merchandise must be sold in designated vendor areas only.**
- **No items may be sold out of the barns or parking lots.**
- **An individual found in violation of this rule will be issued a written warning on the first offense. The second and all subsequent offenses will yield a \$500 fine each.**

Show Services

Photographer
Kirkbride Photography
Ocala, FL
352-732-0080
www.kirkbridephoto.com

Videoographer
PtHA® Staff
(405) 491-0111

Webcasting
PtHA® Staff
(405) 491-0111

Trail Equipment
Classy Courses Inc., Tucker Williams
281-438-5867
www.classycoursesinc.com

Show Veterinarian
Equine Sports Medicine
940-465-4466

Rent A Stall Mat
1-844-628-7787
RentAStallMat.com

Golf Carts
GCH Rentals & Leasing
918-922-8300

Webcast Ads



PLACE A WEBCAST AD OF YOUR BUSINESS, TRAINER OR GOOD LUCK NOTE TO A FAMILY MEMBER OR FRIEND! BROADCAST ON WWW.PINTO.ORG. ONLY \$250. CALL THE MAGAZINE DEPARTMENT FOR MORE DETAILS @ 405.491.0111 EXT. 2240 OR EMAIL AT MAGAZINE@PINTO.ORG

ADS DUE OCT 22ND

Pinto Gear

by tioga territory

Proudly serving
Pinto Horse
people for over
30 years!



Call today! *Ask us about customization!*

1-800-279-3052

tiogaterritory.com/PtHA



502 East Main St.
Chanute, KS 66720

Hotels

Log on to www.visittulsa.com for complete hotel listing and other visitor information!



Hyatt Regency Tulsa

100 E 2nd Street Tulsa, OK 74103

Reservations: (918) 234-1234

Request special Pinto Rate

Rate Deadline: Oct. 15, 2023



Embassy Suites

3332 South 79th East Avenue, Tulsa, OK 74145

Reservations: (918) 622-4000

www.embassysuites.com

Request special Pinto Rate

Rate Deadline: Oct. 3, 2023

**RENT a
STALL
MAT**

Rent A Stall Mat
will be serving you
at the Pinto World
Championship

RentAStallMat.com

We
Support
you and your horse
from the ground up!

- Call anytime for installation/removal
- Call immediately if horse begins chewing/moving mats
- Take advantage of our Pre-Bed Option for easy arrival

phone / fax 1-844-628-7787
1-844-MATS-R-US



JOHN DEERE



Work. Horse.

Your favorite barn buddy is here.

A new John Deere Gator™ Utility Vehicle is the answer to all barn chores. From cleaning stalls and feeding the horses, to a comfortable seat for the trainer who does-the-most.

We have an extensive line-up of 2-, 3-, and 4-passenger work horses specifically designed for you.

To learn more about how you can save up to 28% on new John Deere equipment, call 1-866-982-6872 or visit JohnDeere.com/Equine today!



EQUINE  DISCOUNTS

Gist

SILVERSMITHS

Proud Makers of the 2023
Color Breed Congress

HIGH POINT BUCKLES



*Your
Award
Specialist*

PROUDLY MADE IN THE USA



Proud Sponsor & Official Buckle

VISIT GISTSILVERSMITHS.COM



CASH FOR COLOR

STALLION PROGRAM

CASH FOR COLOR awarded over \$163,000 in CASH and Prizes in 2021 and 2022

Sponsors

- A Bit More
- Barn Boards By Melissa Illic
- Cowboy Magic
- Equine Omega Complete
- EQyss Grooming Products
- Georgia Rottweilers
- Harris Leather & Silverworks
- Head to Tail Boutique
- Horse Record Books
- Huntress Riding Apparel
- Jeff Kirkbride Photography
- Kathy's Show Equipment
- Kelly Herd Jewelry
- Kevin Garcia Originals
- Limited Edition Ropes
- MacQueen Equine Law
- Mane 'N Tail
- Mare Magic Probio Blend
- Pyranha
- Perri's Leather
- Prime Performance
- Purple Power Equine
- Rod Patrick Bootmakers
- Sarah Ryan Designs
- Shelly Presley
- Show Horse Today
- Show Off Designs
- Smart Earth Camelina Oil
- Soft Ride Comfort Boots
- Sure Step
- The Stallion Connection
- Ultra Cruz Animal Health
- Viszerra Show Apparel
- 100X Equine

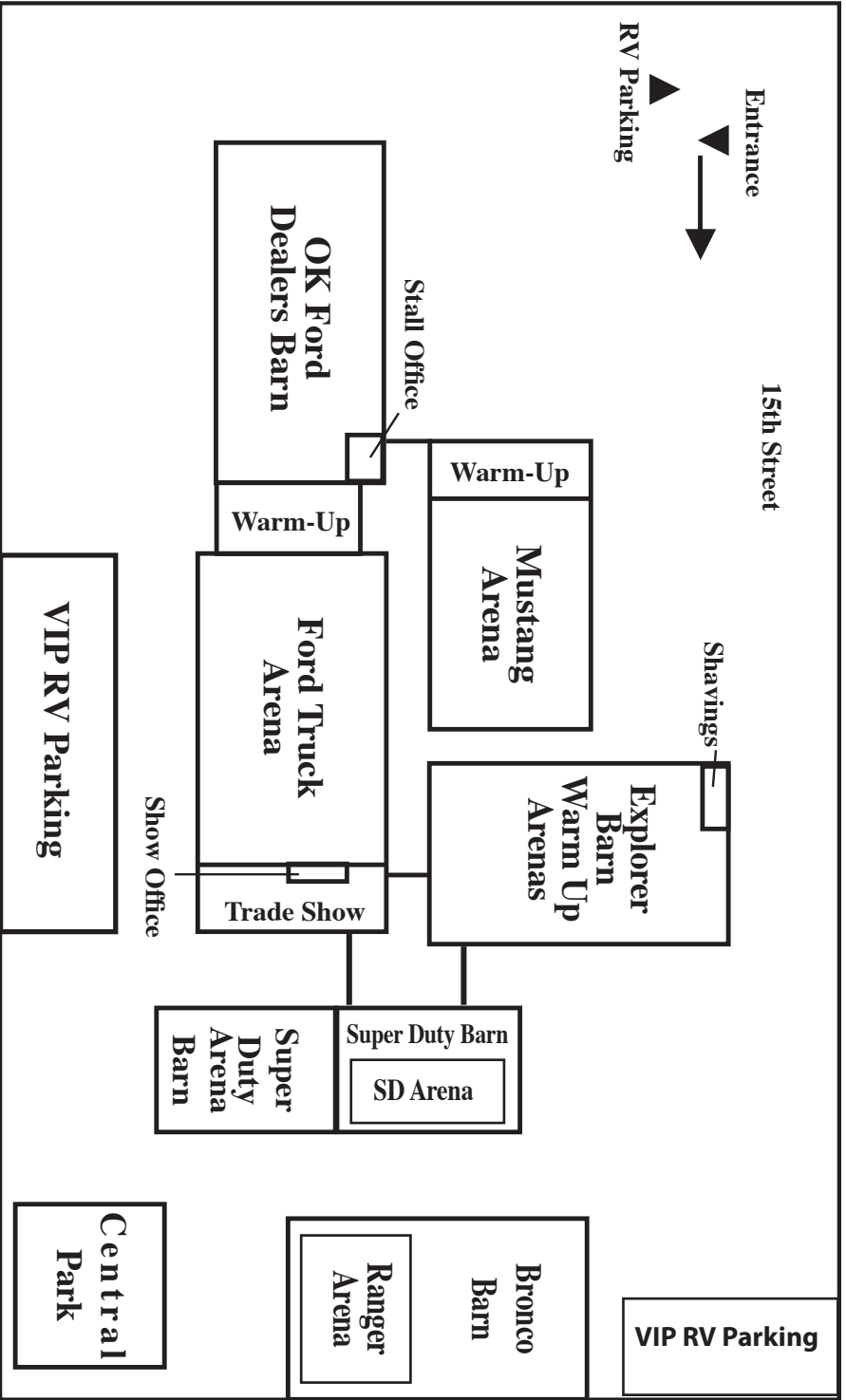


Fully Enrolled Stallions

- | | |
|-----------------------------|-------------------------------|
| A Real Code Red | Lazy Luvah |
| A Scenic Impulse | LifeLine |
| A Sudden Holiday | Living Large |
| All Time Fancy | Mightty Mouse |
| Awesome All Night | Mr Zippos GoodBar |
| Bank On The Best | One And Only Asset |
| Blue Skies Only | One Special Asset |
| Cat Smart Boonsmal | Pandemic |
| Chocolatey | Party In Slow Motion |
| Count The Minutes | Pass The Legacy On |
| Delta Hellcat | Required Invitation |
| Delta Olenas Jul | RHF Once Fancy Phantom |
| Dirty Callahan | Rise Above |
| Faceit Ima Version | Rose To Genesis |
| Good Cruisin Machine | Taris Prescription |
| HBF Catch My Irons | The Good One |
| HBF Hot Expectations | The Grease Monkey |
| Hes In Formal Attire | The Lope Factor |
| Hesa Speical HotRod | The Original Cowboy |
| High Rise Star | The Sugar Daddy |
| Im The Only One | The Wow Factor |
| Impulsified | TWR Bar Time Blues |
| Invite The Artist | Ultimataely Lazy |
| Invest In The Invite | VR You Only Live Once |
| Its All In My Jeans | Watch Me Im Special |
| John Simon | Whata Vested Asset |
| | YouDontKnowJackZip |

www.cashforcolor.com





Shorty's
CABOY HATTERY
shortysHattery.com
405.232.4287



Located in the
HISTORIC OKC STOCKYARDS

High Point Awards

Color Breed Congress® Awards

- Jacket Certificate and Halter for 1st place of each class with three or more shown entries
- Halters for 2nd place of each class with three or more shown entries.
- Medallions for the 1st-10th place entry on the average card for each class, except Grand and Reserve
- Money for the Cash Challenge Classes
- Money for all NSBA dual-approved open classes and NSBA Color Classes, first place for NSBA will be awarded a trophy or plaque depending on the number shown.
- Chairs, Kensington products and Gist Buckles for High Point awards
- Jackets for Halter Grand Champions - all age divisions combined
- Vest to all Reserve Grand Champion Halter winners
- Prize Packs for Hula Hoop Hoedown winners
- Scholarships to High Point Youth of each breed with 25 or more in division

PtHA® High Point & Reserve High Point

Youth Walk/Trot, 10 & Under - 2 Chairs / Kensington product
ST/HN Junior Youth - 2 Chairs / Kensington product
ST/HN Senior Youth - 2 Chairs / Kensington product
Novice Youth - 2 Chairs / Kensington product
Youth Walk/Trot, 11-18 - 2 Chairs / Kensington product
ST/HN Junior Amateur - 2 Chairs / Kensington product
ST/HN Senior Amateur - 2 Chairs / Kensington product
ST/HN Elite Amateur - 2 Chairs / Kensington product
Novice Amateur - 2 Chairs / Kensington product
Amateur Junior Walk/Trot - 2 Chairs / Kensington product
Amateur Senior Walk/Trot - 2 Chairs / Kensington product
Amateur Elite Walk/Trot - 2 Chairs / Kensington product
Youth Walk/Trot - Solid, 10 & Under - 2 Chairs / Kensington product
Youth Walk/Trot - Solid, 11-18 - 2 Chairs / Kensington product
Amateur Walk/Trot - Solid - 2 Chairs / Kensington product
Open Utility - 2 Chairs / Kensington product

PtHA® High Point & Reserve High Point

ST/HN Open Horse - Buckle / Buckle
ST/HN Youth - Buckle / Buckle
ST/HN Amateur - Buckle / Buckle
Open Solid Horse - Buckle / Buckle
Youth Solid Horse - Buckle / Buckle
Amateur Solid Horse - Buckle / Buckle

PHBA High Point & Reserve High Point Open Horse- Buckle/ Buckle

Youth- Buckle/ Buckle

Amateur- Buckle/ Buckle

Walk/ Trot Amateur- 2 chairs/Kensington Product

ABRA High Point & Reserve High Point

Open Horse- Buckle/ Buckle

Youth- Buckle/ Buckle

Amateur- Buckle/ Buckle

Youth Walk/Trot 18 & U- Buckle/ Buckle

Scholarships

Only awarded if 25 or more in division

High Point PtHA® Youth- \$1,000

High Point PHBA Youth- \$500

High Point ABRA Youth- \$500

Payable upon enrollment in college.

High Point & Reserve High Point Awards

Ranch Horse High Point Awards

(Include Ranch Trail, Ranch Riding, Ranch Pleasure, Ranch Showmanship, Ranch Horsemanship, Ranch Reining, Ideal Ranch and Ranch Confirmation) Ranch Horse classes will not be included in the Breed High Points, only the Ranch Horse High Points.

Buckles - High Point & Reserve High Point

All Breed Open
All Breed Amateur
All Breed Youth
All Breed Walk/Trot Youth
All Breed Walk/Trot Amateur
PtHA® Open
PtHA® Amateur
PtHA® Youth
PtHA® Open , Solid
PtHA® Amateur , Solid
PtHA® Youth, Solid
PtHA® Open Mule
PHBA Open
PHBA Amateur
PHBA Youth
ABRA Open
ABRA Youth
ABRA Amateur

Long Ear Congress Awards

- Jacket Certificate and Halter to 1st place winners in each class - with three or more shown entries.
- Halters to 2nd place winners in each class - with three or more shown entries.
- Medallions 1st-10th place entry on the average card for each class
- Jacket to Halter Grand Champion on the Average Card
- Vest to all Reserve Grand Champion Halter winners
- High point awards - Youth and Amateur high point awards based on one (1) mule one (1) rider combination.

Long Ear Overall Congress High Point & Reserve High Point

Open Mule - Buckle Buckle
Youth Mule - Buckle Buckle
Amateur Mule - Buckle Buckle
Open Donkey - Buckle Buckle
Open Miniature Donkey - 2 Chairs and Kensington product
Open Training Level Donkey - 2 Chairs and Kensington product
Open Miniature Mule- 2 chairs and Kensington product

What did you think?

Fill out a suggestion form at the show office to let us know what you liked or what you would like to see done differently next year. We love your feedback!



#COLORBREEDCONGRESS

COLOR BREED CASH CHALLENGE

\$75 of the entry fees will be paid back plus \$300 added money per class. Entry deadline is October 5, 2023. Post Entries will be accepted with a late fee.

BREEDS INCLUDED:

All breeds will be allowed to show in the Cash Challenge classes.

The Long Ears may show in the All Ages, All Types classes.

CLASSES INCLUDE:

Yearling Longe Line, Hunter Type Horse
 Yearling Longe Line Stock Type Horse
 2-Year-Old Western Pleasure, Horse
 3 & 4 Year Old Western Pleasure, Horse
 2-Year-Old Hunter Under Saddle, Horse
 3 & 4 Year Old Hunter Under Saddle, Horse
 Hunter Under Saddle, All Ages, All Types
 Trail, All Ages, All Types
 Western Pleasure, All Ages, All Types
 Ranch Rail Pleasure, All Ages
 Ranch Riding, All Ages

Free coffee and donuts every morning at the hospitality booth in the Ford Dealer Barn.



CASH FOR COLOR INFO@CASHFORCOLOR.COM

NSBA DUAL-APPROVED CLASSES

Multiple classes are approved through the National Snaffle Bit Association for the 2023 Color Breed Congress®, including select classes of Western Pleasure, Hunter Under Saddle, Trail, Western Riding and Yearling Longe Line. Open, Amateur and Youth classes will run concurrently with each breeds' classes. Jackpot money will be awarded in Open NSBA classes. First place for NSBA will be awarded a trophy or plaque depending on the number shown. Horse owner and exhibitor must be current NSBA members. The horse must be registered with NSBA and in the current Owners name. Call (847) 623-6722 for NSBA membership information. See entry form for details.

NSBA COLOR CLASSES

NSBA Certificate of eligibility required. Owner and exhibitor must be current NSBA members. NSBA Color Classes will run concurrently with the Cash for Color Classes.

CLASSES INCLUDE:

Cash for Color Yearling Longe line Open, Hunter & Western
 Cash for Color Yearling Longe Line Non-Pro, Hunter & Western
 Cash for Color Yearling Non-Pro In Hand Trail
 Cash for Color 2YO Open WP
 Cash for Color 2YO Open HUS
 Cash for Color 3YO WP Open
 Cash for Color 3YO WP Non-Pro
 Cash for Color 3YO HUS Open
 Cash for Color 3YO HUS Non-Pro
 Cash for Color 3YO Ranch Rail Open
 Cash for Color 3YO Ranch Rail Non-Pro
 Cash for Color 5 & Under Non-Pro WP
 Cash for Color 5 & Under Non-Pro Hus
 Cash for Color 5 & Under Non-Pro Ranch Rail
 All Age WP Non-Pro Walk Trot
 All Ages Hus Non-Pro Walk Trot
 6 & Over Non-Pro WP
 6& Over Non-Pro Hus
 6& Over Non-Pro Ranch Rail

BETTER HORSES.COM

Raising your equine experience to a higher level.



Airing Nationwide on ...



RFD-TV	Cable Network	Mon.	2:00pm
Cowboy Channel	Cable Network	M-F	6:00am
Rural Radio	Sirius XM Ch. 147	W-TH	10:00pm

**Also broadcasting in 23 radio markets
and 5 television markets!**

Kansas City	KCWE-TV29	Sun.	8:00am
Topeka	KTMJ-TV43	Sun.	6:00am
St. Joseph	KQTV-TV2	Sun.	10:00am
Wichita	KSNW-TV3	Sun.	5:30am
Oklahoma City	KSBI-TV52	Sun.	2:00pm

**Catch all episodes on the Better Horses
YouTube & Podcast Channels.**



Be sure to subscribe to the Better Horses Newspaper

CLASS INFORMATION

Classes Requiring A Hand Gallop

12 horses can hand gallop at one time at the Color Breed Congress®.

Amateur Walk/Trot Classes (PtHA®)

Classes – All classes offered will be judged in the same manner as their regular Amateur division counterparts (eliminating lope or canter). All exhibitors must have applied for Amateur card.

Eligibility –PtHA® member, 19 years old and older is eligible for these divisions. Entries in these divisions may NOT enter any class at the Color Breed Congress® that requires a lope or canter.

Ownership – All Pintos must be owned or leased by the exhibitor or family member.

Points – Amateur Walk/Trot classes are ROM point earning and will be counted for Amateur Walk/Trot High Point awards.

Youth Walk/Trot, 10&U, Division Classes (PtHA®)

All classes offered will be judged in the same manner as their regular Youth division counterparts (eliminating lope or canter).

Eligibility – Any PtHA® member, 10 years old and under is eligible for this division. Entries in this division may NOT enter any class at the Color Breed Congress® that requires a lope or canter, or any Leadline class.

Ownership – All Pintos must be owned or leased by the exhibitor or family member.

Points – 10 & Under Youth Walk/Trot classes are ROM point earning, and will be counted for Youth Walk/Trot High Point awards.

Youth Walk/Trot, 11-18, Division Classes (PtHA®)

All classes offered will be judged in the same manner as their regular Youth division (eliminating lope or canter).

Eligibility – Any PtHA® member, 11-18 years old is eligible for this division. Entries in this division may NOT enter any class at the Color Breed Congress® that requires a lope or canter, or any Leadline class.

Ownership – All Pintos must be owned or leased by the exhibitor or family member.

Points – Youth Walk/Trot, 11-18 classes are ROM point earning, and will be counted for Youth Walk/Trot, 11-18 High Point awards.

Amateur

To compete in Amateur classes: an exhibitor must possess (or have applied for) a current Amateur certification in their respective association at the time entries are submitted. An Amateur card must be submitted with entry.

Novice

To compete in Novice classes: whether Youth or Amateur a Novice exhibitor must possess (or have applied for) a current Novice certification in their respective association.

2023 CBC JUDGE LIST

PtHA, ABRA, PHBA

Nancy Wilde
Jan Dublin
Sherrie Nichols
Sandy Curl

PtHA

Dawnn Taylor
Lauren Murrell
Karen Craighead
Manita Defoor
Chris Arnold
Trisha Shorten- Armstrong
Don Beard
Jenny LaGrange

HULA HOOP HOEDOWN



The top six exhibitors from randomly chosen classes each day will participate in the Hula Hoop Hoedown. Keep your hoop up the longest and win a prize!



**DON'T BE
LEFT BEHIND!
STAY IN THE
WINNER'S
CIRCLE**

Reach **MORE** Breeds. **MORE** Judges. **MORE** People.
FOR LESS!

**THE EQUINE
CHRONICLE[®]**

IN PRINT OR ONLINE - WE'VE GOT YOU COVERED



RESERVE YOUR SPOT NOW!
ASK ABOUT PRINT or ONLINE ADVERTISING

CONTACT GORDON AT
(919) 835-4771 • (352) 804-3474 • GordonChron@aol.com

Visit **EquineChronicle.com** Daily for News, Articles, Photos,
Show Results and Access to the Complete EC Digital Magazine
ONLINE EDITOR DELORES KUHLEWEIN • DELORES.KUHLEWEIN@GMAIL.COM

COLOR BREED CONGRESS® INFORMATION

Requirements

Equine and exhibitors do not have to pre-qualify to be eligible to participate in this show.

Entry in:

PtHA®, ABRA, and PHBA – require membership and registration, in the respective breed association, according to association rules.

Color Breed Cash Challenge Classes – requires membership and registration, in any of the breed associations.

NSBA Classes – requires membership for owner and exhibitor in the National Snaffle Bit Association, according to association rules. Horses must be registered with NSBA.

NSBA Color Classes – requires NSBA Certificate of Eligibility and current membership for owner and exhibitor. Horse must be registered with NSBA and in the current owners name.

Registration

All equine must be permanently registered with the association they wish to show with at the time of exhibition. Any entry not registered with PtHA®, must submit a copy of registration papers or permits with their respective associations or registries at the time of entry. Applicable rush fees will apply for PtHA® registrations sent to the office after Oct. 5, 2023.

Leases

If a Pinto is to be shown by a Youth or Amateur that is NOT the current owner or related to the current owner, the exhibitor MUST have a current Lease for the Pinto on file with the PtHA®, PHBA, and ABRA horses must follow association rules regarding leases.

Transfer of Ownership

No transfers will be accepted at the show. All horses must be transferred prior to the first day of the show. Rush fees will be charged on Transfers of Ownership for Pintos wishing to enter the Congress if transfer is received in the office after Oct. 5, 2023.

LONG EAR SHOW INFORMATION

This is an approved show held under the registration requirements and show rules of the PtHA®.

STALL INFORMATION

All animals must have a stall paid for each day exhibiting. No more than one animal may occupy a stall. Anyone using an unassigned stall for grooming, storage or stalling of a horse will be charged a full show stall fee for the use of that stall. Anyone not obtaining their stall assignment from the Stall Manager, or found to be stalling horses in stalls not yet paid for, will be

eliminated from the show by management. The Stall Manager must make any change in stall assignments.

Stall Fees

Super Duty Arena Barn (heated) – \$295/stall or tack stall
 Central Park Barn (heated) – \$295/stall or tack stall
 OK Ford Dealer Barn (enclosed) – \$260/stall or tack stall
 Bronco Barn (Enclosed) – \$260/stall or tack stall
 Super Duty Barn (Covered) – \$210/stall or tack stall

Day Stalls – \$100/day/stall or tack stall

Stall reservations must be postmarked by October 5 in order to avoid the late fee. Reservations postmarked after October 5 will be assessed a \$25 per stall late fee.

Group Stalling

Persons wishing to stall together must submit stall reservation forms in the same envelope, along with the full payment of stall fees.

Stall Reservations

Any reservation received without full payment will be considered received on the date complete payment is received at the PtHA® office. Payment is deposited upon receipt, but does not guarantee assignment to a requested stall area.

Stall assignments will be based on the stall locations previously established at past Color Breed Congress® Shows. The following is the order stalls will be assigned:

- Returning individuals whose reservations are postmarked by October 5, and are requesting their established location. However, if more stalls are needed than last year, it may be necessary for that exhibitor to move to a different area.
- Returning individuals whose reservations are postmarked by Oct. 5 that request a new location.
- New requests/individuals whose reservations are postmarked by Oct. 5
- Reservations postmarked after Oct. 5 will be assigned by date postmarked.

Move-In

Horses may move in beginning at noon Wednesday, November 1st. There will be no early move-in.

Move-Out

All stalls must be vacated by noon Sunday, November 12. Any equine or tack stall still occupied after deadline will be charged \$100 per day, per stall until vacated.

Feed and Bedding

Bedding will be the responsibility of the exhibitor/owner. Straw and coarse shavings are allowed as stall bedding. Individuals may bring bedding for their own use, but the sale of bedding by exhibitors/owners is prohibited under PtHA®'s contract with



JEFF
KIRKBRIDE
Photography



Capturing the memories you create
Official Photographer of the
Pinto Horse Association of America

www.kirkbridephoto.com
9550 NW 80th Ave, Ocala, FL 34482
jkphoto7@gmail.com
352.752.0080



The Long Ear Color Breed Futurity will be held in conjunction with the Color Breed Congress Show.

Eligibility

To be eligible to participate in the Long Ear Color Breed Futurity, a weanling, yearling, 2-year old or 3-year old long ear must be sired by a Jack who has been nominated into the Long Ear Color Breed Futurity. The weanling, yearling, 2-year old or 3-year old must be registered in the PtHA Long Ear Registry. The Jack must be registered in the PtHA Long Ear Division. The mare or jenny must be registered in either a PtHA Division or in the Broodmare/Jenny registry.

Membership

To be eligible to participate in the Long Ear Color Breed Futurity all jack owners must be current PtHA members. All owners and exhibitors of the weanling, yearling, 2-year old or 3-year old entered must be current PtHA members.

Classes Offered

The Long Ear Color Breed Futurity classes will be offered in conjunction with the Color Breed Congress Show in November. Futurity classes will be \$50 per class, plus they must show in the corresponding class at the Color Breed Congress.

- Mule Weanling/Yearling Halter (Open)
- Donkey Weanling/Yearling Halter (Open)
- Mule 2-Year Old Halter (Open)
- Donkey 2-Year Old Halter (Open)
- Mule 3-Year Old Western Pleasure (Open)
- Donkey 3-Year Old Training Level Walk/Trot Western Pleasure (Open)

Enrolling the Jack

To participate in the Long Ear Color Breed Futurity, the Jack owner pays the \$250 nomination fee by January 1 – March 31, 2023. Late deadlines will be \$350 from April 1 – June 30, 2023 or \$450 from July 1 – September 30, 2023.

Payback of Purse

- \$150 of each Jack nomination goes to the Mule class purse
- \$50 of each Jack nomination goes to the Donkey class purse
- \$50 of each Jack nomination is retained by PtHA
- \$50 class entry fee goes to each class purse entered

# of places	<u>1</u>	<u>2</u>	<u>3</u>	<u>4</u>	<u>5</u>	<u>6</u>	<u>7</u>	<u>8</u>	<u>9</u>	<u>10</u>
% paid	100%	60%	40%	33%	28%	26%	24%	23%	22%	20%
		40%	32%	26%	23%	20%	19%	18%	17%	16%
			28%	23%	20%	18%	16%	13%	15%	14%
				18%	16%	14%	13%	12%	11%	11%
					13%	12%	11%	10%	9%	9%
						10%	9%	9%	8%	8%
							8%	8%	7%	7%
								7%	6%	6%
									5%	5%
										4%

Visit www.colorbreedcongress.com for Jack nomination forms

Expo Square. Feed and bedding orders will be taken by Expo Bedding & Feed 918-728-3299. Place order online at bedding.exposquare.com.

Soiled Bedding

All soiled bedding must be disposed of in designated bins only. Please do not put bedding in trash cans.

Removing Panels/Damages

If panels are removed from stalls, a \$30 fee will be charged to the PtHA® account of the stall renter for EACH panel not returned to original position prior to move out. Any other damage assessed by Expo Square will also be charged to the stall renter.

Safety

Congested aisles and alleys are an inconvenience and a safety threat for other exhibitors and animals. Please exercise common courtesy and sensible judgment in regards to the placement of chairs and items that may block aisles. No aisles may be closed off. See also: Stall Decorations. Show management reserves the right to ask any person, whose animal, equipment or decorations are creating a dangerous situation, to move locations.

Stall Decorations

Absolutely no decorations will be allowed to protrude into the barn aisles. If seating areas, entertainment centers, etc., are desired, additional stalls may be purchased for this purpose. All decorations must be attached using temporary set-ups and must be removed by the decorator prior to move out. Use of nails, tacks or any similar material is prohibited.

Wash Racks

Animals are to be washed in wash racks only. Bathing of animals in stalls, walkways, streets or any other area is prohibited.

Stall Mat Rental

Stall mat rentals are available through Rent a Stall Mat. The mats should be ordered online at www.rentastallmat.com or 844-628-7787 prior to the show to ensure delivery prior to your arrival. Stall assignments will be finalized the week prior to move-in. The mats will be delivered and removed after your departure.

COLOR BREED CONGRESS RULES

General Rules and Regulations

This show is approved and managed by the Pinto Horse Association of America Inc. All classes will be conducted in accordance with this Premium Book and the current rulebook.

The final right to settle all conflicts of each participating breed is reserved by the Show Management. If this Premium Book and the rulebooks do not cover a rule and/or condition, the PtHA® Executive Director will make the final decision.

Responsibility and Liability

See also PtHA® Rule B3 and B4.

It is agreed that by entering the Color Breed Congress®, either as an owner or exhibitor or in any way assisting in the Color Breed Congress®, the Pinto Horse Association of America, Inc., the PtHA® Executive Committee, staff, independent contractors and Expo Square shall not be held responsible in any manner for loss or damage to any animals, owners, exhibitors, handlers, affiliated parties, property or properties associated with these aforementioned articles.

Catastrophe Clause / Force Majeure: PtHA is not liable for any unforeseeable and/or unavoidable catastrophic events that may interrupt the expected and planned Color Breed Congress class schedule, and that could result in program changes or show cancellation. This pertains to any and all natural, human caused and man-made disasters and catastrophic events beyond the control of PtHA and the Color Breed Congress show management. PtHA may consider a catastrophe fee reimbursement for affected exhibitors, on a per incident basis, after a comprehensive financial review and assessment of the situation has been completed.

Errata

In the event of typographical or other errors in this Premium Book, the correct spelling or meaning shall be substituted as the context applies.

Photography and Videography

Only photographers and videographers under contract with the PtHA® will be allowed to take photos or video of any horse, exhibitor, owner, staff member or those associated with the show during the Color Breed Congress®. Persons directly related to or associated with an exhibitor may take photos or video of the exhibitor for personal use only but permission must be obtained from the show office.

Television and Media

See also PtHA® Rule B2.

Attendance at a PtHA®-approved event, in whatever capacity, shall constitute authorization for PtHA®, its agents, designees, or assigns to photograph, video tape, televise, or record by other means any person or Pinto on the premises of a PtHA®-approved event, and shall further constitute authorization for the use of such person's name, voice and biography, or the name, pedigree and performance record of any such horse on the premises in conjunction with any photographic material.

Announcement Requests

The announcer stand and paddock booth will be off limits except for authorized show personnel assigned to that area. Show Management will not tolerate interruptions or loud activity in or around these areas. All announcement requests must be submitted in writing on a Special Announcements Form at the show office. PtHA® staff must approve all announcements.



Pinto Horse
Association of America, Inc.

Proud Sponsor of:
Pinto Horse Association Of America, Inc.



PTHA Members Receive:

**20% OFF
ORDERS**

Now Through 12/31/2022

Enter Code: **KPP22PTHA**



PINTO LUGGAGE
exclusively offered by
KENSINGTON



www.KensingtonProducts.com

ENTRY INFORMATION

POST-ENTRIES

Post-entries will be accepted for all classes with appropriate fees. Post entries must be made by 6 pm the day prior to when the class to be entered is scheduled. Day of class entries will not be accepted. If entry is a new horse in the show, then day of classes may be entered as long as it is at least 5 classes before class enters arena.

ENTRY SUBMISSION

All entries must be postmarked no later than October 5, 2023, to avoid post-entry fees. Entries must be submitted on the official Entry Form for this show and may be photocopied as needed. Entry Forms must be complete, with all class numbers and proper signatures included.

Incomplete Entry Forms may be returned unprocessed. Entries without payment of full fees, entries paid by returned checks or credit cards declined after close of entries, will be considered post-entries, with additional fees assessed accordingly.

Send all entries to: Pinto Horse Association of America Inc., Color Breed Congress® Entries, 7330 NW 23rd St., Bethany, OK 73008 or fax to (405) 787-0773 or email to congress@pinto.org. If entries are faxed, please do not also mail.

ENTERING CLASSES WITH PAYBACK

If entering any Cash Challenge, NSBA Color Classes, or Open NSBA dual-approved class, the owner must complete the financial information included on the entry form to be eligible for payback.

ADDING CLASSES

No classes will be added at the gate. An Add Form MUST be completed at the Show Office the day before the class the exhibitor wishes to enter.

SCRATCHING CLASSES

As a courtesy to show management, any exhibitor wishing to scratch a class must complete a Scratch Form at the Show Office BEFORE that class is called to the makeup pen. There are no refunds for scratched classes. If a class is scratched with the show office before the class enters the arena, then a class may be substituted for \$15 per class.

SUBSTITUTING CLASSES

Classes may be substituted on a horse that is already entered. If a class is scratched with the show office before the class enters the arena, then a class may be substituted for \$15 per class. 'No Show' entries WILL NOT be eligible for substitutions. A Substitute Form MUST be completed at the Show Office the night before the class the exhibitor wishes to enter.

SUBSTITUTING A HORSE

Any horse (Youth, Amateur or Open) that has been scratched entirely from competition, in writing, may be replaced at a fee of \$15 per class, in addition to the office charge on the new horse. But, the new horse must be owned/leased by the same owner/lessee as the scratched horse.

SUBSTITUTING A RIDER

Riders may be substituted in OPEN classes, only if the horse is already entered in the class. A Rider Substitute form must be filed at the horse show office before the class enters the arena.

CANCELLATION OF ENTRIES/STALLS

All entries and stalls canceled, regardless of reason, will be handled in the following manner:

- Canceled through Oct. 4 - Full refund of fees will be granted. Office charge will be retained by PTHA®.
- Canceled Oct. 5 through Oct. 14 - 75% refund of fees will be granted. Office charge will be retained by PTHA®.
- Canceled Oct. 15 through Oct. 23 - 50% refund of fees will be granted. Office charge will be retained by PTHA®.
- Canceled Oct. 24 through Nov. 2 - 25% refund of fees will be granted. Office charge will be retained by PTHA®.
- Canceled on or after Nov. 3 - After the show begins, NO REFUNDS will be given under any circumstances.

All notifications must be made by mail, e-mail or fax. Date of cancellation will be determined by the date written notification is received by the PTHA® office. PHONE CANCELLATIONS WILL NOT BE ACCEPTED. If eligible, refund checks will be mailed approximately 30 days after the conclusion of the show. No other refund requests will be honored. All checks are deposited on the day we receive them.

PAYMENT OF FEES

Checks - Checks should be made to the Pinto Horse Association® in U.S. Funds. A \$50 penalty will be added to the amount due on any returned check. Returned checks not cleared by October 5, 2023, will result in post-entry charges on all associated entries. All checks are deposited on the day we receive them.

Credit Cards - American Express, Visa, MasterCard or Discover cards will be accepted for entries and all show related fees. When entering: provide the account number, card expiration date, exact name appearing on the card and association membership number (if applicable) of cardholder AND horse owner. Charges made at the show will require the use of the actual credit card. In the event that a credit card is declined by the credit card company, a \$50 penalty will be added to the amount due. Post-entry fees plus \$50 penalty will apply if credit card is not honored by Oct. 5, 2023.

All credit cards are ran on the day received or as soon as we can get them entered.

Starting August 1, 2022 a 3% debit/credit card transaction fee will be added if using a debit or credit card

If you have a fraudulent charges on a credit card while using it at the show, please let the show office know.

FLAT FEE

Youth or Amateur exhibitors may pay a Flat Fee for each rider/horse combination and enter a maximum number of ten classes for which they are eligible. All classes the Youth or Amateur wishes

to enter under this plan must be listed on the ORIGINAL ENTRY.

If adding classes after the original entry form is submitted to an entry that is on the Flat Fee, the additional classes will be considered separate and will NOT be eligible to be under the Flat Fee. These classes will be charged, using the post-entry fee. Classes may be dropped at no charge, but exhibitors must notify the Show Office of any such scratches prior to the start of the affected class(es) to be eligible for class substitutions.

Cash Challenge classes are not eligible to be used for Flat Fee Classes.

SHOW RULES

Admission to the Arena

No person will be permitted to enter the arena, except participants in the class, judges and their assistants. In classes where attendants are allowed, they will not be permitted in the arena until summoned by the judge.

Arena Gate Calls

Barn calls are a courtesy and will be made for each class. Regardless of the circumstances, it is the exhibitor's ultimate responsibility to report to their class on time.

Attire

All attendants must be neatly and suitably attired for a Horse Show, long sleeves or a lab coat and appropriate footwear are required. Shorts, tank tops, sandals, etc., are not considered proper. Hats are optional, but ball caps are not permitted. The management may, at their discretion, bar any entry or person from entering the arena if deemed not suitable to appear before an audience.

Breaks

PtHA® reserves the right to reschedule any published breaks as necessary. Additional breaks will be announced as deemed proper according to the progression of the show.

Class Placings

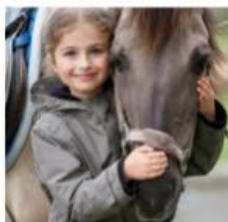
During the Color Breed Congress®, the announcer will announce the placings under each judge, as well as the average placings in all classes. Average placings only will line up for awards.

Results of classes are considered final upon receipt of the judge's cards, unless an error in tabulation has occurred. PtHA® reserves the right to correct obvious errors on judges' cards when detected.

Commercial Exhibits/Vendors

If an individual wishes to sell or advertise tack, clothing jewelry, furniture or any miscellaneous merchandise, a signed vendor contract must be on file with PtHA®. In addition, the merchandise must be sold in designated vendor areas only. No items may be sold out of the barns or parking lots. Anyone found in violation of this rule will be issued a written warning on the first offense. The second and all subsequent offenses will yield a \$500 fine each.





EQUIPRO / | | | ROADSIDE

PRO PERFORMANCE - PRO RESULTS
800-382-1672
WWW.EQUIPRORoadSIDE.COM

Member Code: PtHA23

24/7 Roadside Assistance - Truck - Trailer - Horses

The Motor Club of Choice, for You and Your Valuable Cargo

Live Service Operators
Highly Responsive Service Personnel
Extended Levels of Service
Equine-Based, Ranch-Based Key Staff
Nationwide and Canada

Unlimited Towing
Tire and Battery Service
Emergency Lodging and Boarding
Emergency Fuel or Charging
Emergency Trailer Transport

Lockout Service
Emergency Trailer Transport
Equine or Other Livestock Services
Winch-Out Services
Emergency Trip Expense Reimbursement

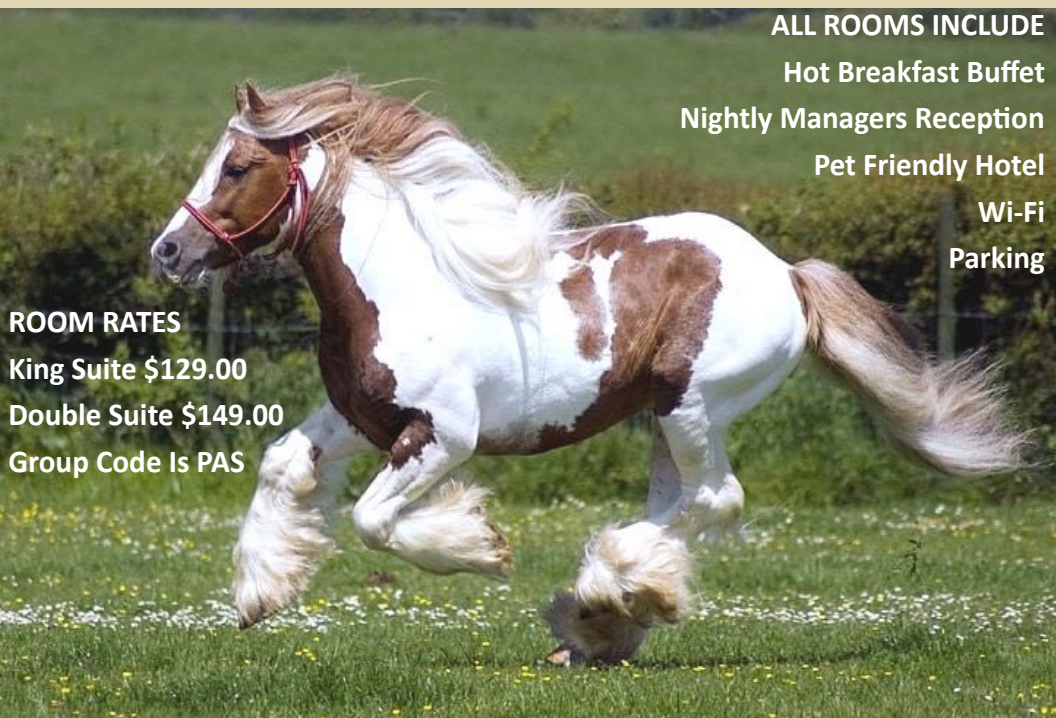
PERRI'S[®]

MADE IN THE USA
never looked so good.

SHOP ONLINE AT PERRISLEATHER.COM



WELCOME PINTO HORSE ASSOCIATION



ALL ROOMS INCLUDE

Hot Breakfast Buffet

Nightly Managers Reception

Pet Friendly Hotel

Wi-Fi

Parking

ROOM RATES

King Suite \$129.00

Double Suite \$149.00

Group Code Is PAS

THE PERFECT PLACE TO HANG YOUR HAT



**EMBASSY
SUITES**
by Hilton™

Tulsa I-44

3332 South 79th East Avenue

Tulsa, OK 74145

Disqualification

Abuse – Any equine that shows evidence of fresh blood in the mouth, nose, chin, shoulder, barrel, flank or hip area will be considered to be abused and may be excused from the arena.

Dishonesty – Any exhibitor that has made or caused to be made any false statement in regard to any animal or article exhibited, or if any exhibitor shall attempt to interfere with the judges in the performance of their duties, he or she shall be excluded from exhibiting.

General – In all individual work classes, simple majority opinion of the judges shall prevail, such as off pattern and lameness.

Lameness – A equine will be excused from the arena if a simple majority of judges disqualify the entry due to lameness.

Loose Equine – Any equine that becomes separated from its handler, rider or driver and cannot be caught by the original exhibitor or is beyond the exhibitors control may be disqualified and excused from the arena.

Drug Declaration

A Pinto that has received medication that contains a prohibited substance may be shown if all requirements listed in PTHA® rule G16 are met and a drug declaration form has been completed and returned to the Show Office.

Electronic Devices

Any exhibitor using an electronic device in the show arena will be immediately disqualified. (Exception: Reasonable Accommodation certificate has been issued.)

Exercise/Longeing

Exhibitors will receive a schedule of available practice times for some specific disciplines in their show packets. No longeing will be allowed in the arenas. Longeing areas will be designated and should be closely followed.

Exhibitor Back Numbers

It is the responsibility of the exhibitor to verify, prior to entry into the ring, the correctness of their exhibitor number. Any exhibitor not displaying a number or displaying a wrong number will not receive credit for placing in that class. Back Numbers shall be worn at all times when exhibiting in classes.

Lost Back Numbers

In the event of a lost back number, a fee of \$20 will be assessed for a replacement.

Equipment Judges Color Breed Congress®

Equipment Judges shall be responsible for attire and equipment rule interpretations. Final interpretations are the responsibility of show management. All bits, tack, appointments and attire shall be checked by the equipment judge prior to entering the arena. Any equipment considered to be inhumane or illegal by the official equipment judge must be removed or entry into the arena will be denied. The equipment judge may disqualify an entry for the presence of blood on the horse. The equipment judge (s) may serve

as an official alternate judge at the discretion of show management.

Health Requirements

No equine will be allowed on the show grounds without the following:

- 30 day Health Certificate
- Negative Coggins, 12 months

Make sure the veterinarian uses registered names on the health certificate and Coggins papers. If current Health and negative Coggins are not available upon arrival at the show, the equine will be quarantined until released by the Show Veterinarian. All tests will be at the owner's expense.

Patterns

All patterns will be printed in a pattern book. One pattern book will be available to each exhibitor.

It is the exhibitor's responsibility to check the boards behind each arena before their class starts in case any changes and/or corrections to the pattern have occurred.

Protests

See PTHA® Rule G14.

All protests must be given to the show office in writing and signed by the protester within 12 hours of the time of the cause of the protest and must be accompanied by \$250.

Results Posting

Results for each Class will be posted on the PTHA® Web site. High Point and class results will be published in the online *Pinto Horse*® magazine immediately following the show. After they are published in the magazine, the results are deemed final.

Inhumane Treatment

No person shall treat any equine in an inhumane manner. This prohibition against inhumane treatment applies to PTHA® members and non-members. Inhumane treatment shall include, but not be limited to, the prohibited conduct specified below. Inhumane treatment to equine other than Pintos and other animals used in competition is included in this prohibition as it indicates a general course of dealing with equine, which is unacceptable to PTHA®.

1. For purposes of this rule, a person responsible for the care of a horse is also responsible for and may be disciplined for the inhumane conduct of their trainers, agents, representatives and employees. For violation of this rule, an individual may be disciplined, suspended, fined, denied PTHA® privileges, disqualified, expelled from show grounds and/or expelled from PTHA®.

2. Inhumane treatment of any horse or any other animal on show grounds is strictly prohibited. Treatment of any horse will be considered inhumane if a person, educated or experienced in accepted equine training techniques, would perceive the conduct of an individual to be inhumane.

3. For purposes of this rule, a fines and penalty system has been established based on the severity of the offense. All offenses below will be assigned a minimum level of offense (level 1 = mild; level 2 = moderate; level 3 = severe). Depending on the facts of a situation, the level of offense may be increased.

4. Warning or Show Ground Removal cards will be issued based on the frequency and level of offense.

5. Inhumane treatment includes, but is not limited to:

a. placing an object in a horse's mouth so as to cause undue discomfort or distress (min. level 2);

b. leaving a bit in a horse's mouth for extended periods of time so as to cause undue discomfort or distress (min. level 1);

c. tying a horse up or around in a stall or anywhere at a PTHA® event in the manner as to cause undue discomfort or distress (min. level 2);

d. longing or riding a horse in a manner as to cause undue discomfort or distress to the horse (min. level 1);

e. tying or fastening any foreign object onto a horse, halter, bridle and/or saddle in order to de-sensitize the horse (min. level 2);

f. use of training techniques or methods such as poling or striking a horse's legs with objects (min. level 2);

g. excessive spurring or whipping (min. level 1);

h. excessive jerking of reins (min. level 1);

i. excessive fencing (min. level 1);

j. excessive spinning (defined as no more than eight (8) consecutive turns in either direction) (min. level 1);

k. schooling over ramped oxers in reverse order (i.e., from highest to lowest instead of lowest to highest) (min. level 1);

l. schooling using rails higher than four (4) feet (min. level 1);

m. use of prohibited equipment, including, but not limited to: saw tooth bits; hock hobbles; tack collars; or tack hackamores; whips used for showmanship; war bridles or like devices; riding in a curb bit without a curb strap; wire or solid metal curb straps no matter how padded; wire cavesson; wire or cable tie-downs; bumper bits; metal bosals (no matter how padded); chambons; headstalls made of metal (no matter how wrapped or padded), twisted rawhide, or rope may not be used on a horse's head (3/8 inch rope may be used with a slip/gag bit); running martingales used with curb bits used without rein stops; draw reins attached between or around the front legs will not be allowed at PTHA®- approved events (min. level 2);

n. use of any item or appliance that restricts movement or circulation of the horse's tail (min. level 3);

o. exhibiting a horse which appears to be sullen, dull, lethargic, emaciated, drawn or overly tired (min. level 1);

p. intentional or negligent treatment which results in any bleeding – intentional (min. level 3); negligent (min. level 1);

q. applying excessive pressure on or excessively jerking of a halter lead shank or an allowed lip chain (min. level 2);

r. Any other treatment or conduct deemed by a show official to be inhumane or abusive (min. level 1).

WARNING

If an individual wishes to sell or advertise tack, clothing, jewelry, furniture or any miscellaneous merchandise, a signed vendor contract must be on file with PTHA. In addition, the merchandise must be sold in designated vendor areas only. No items may be sold out of the barns or parking lots or on display. An individual found in violation of this rule will be issued a written warning on the first offense. The second and all subsequent offenses will yield a \$500 fine each.

SELLING OF DOGS

- All dogs for sale must have a current heath certificate.
- Anyone selling dogs on the show grounds must obtain a permit from the show office.
- To obtain a permit, heath certificates must be shown at the show office.
- Permits are \$225 per seller and are good for the duration of the show.
- Dogs may be sold from an exhibitor's stall or from a designated area on the show grounds only. No dogs will be allowed to be sold from the arena, barn aisles or warm up areas.
- A \$500 fine will be assessed to any person selling dogs without a permit or not in a designated area.

Secure Trailer Lot

After unloading trailers, please park the trailers in the secure trailer lot north of the Feed Store.

Show Office

The Show Office is located in the Ford Livestock Exhibit Hall and will be open:

Wednesday, Nov. 1 • Noon - 6 pm

Thursday, Nov. 2 • 8 am - 6 pm

Friday, Nov. 3 - Saturday, Nov. 11 • 7 am - 6 pm

These are the only times exhibitor packets may be picked up, class adds, scratches or substitutions may be made. Post entries must be made by 6 pm the day prior to when the class is schedule to be held.

The following must be brought to the office in order to pick up exhibitor packets:

- Health certificate that has been stamped by the Stall Office when you arrived with your equine.
- Equine registration papers
- Association membership cards

Veterinarian

An official show veterinarian will be available during show hours. Individual owners are responsible for any fees due for services rendered. PtHA® provides this service as a convenience only, and accepts no responsibility for actions resulting from services rendered. Any other veterinarian coming onto the Expo Square grounds during the show must receive written permission from the Show Manager before working on any horse, pony, miniature, mule or donkey.

All animals are subject to a physical inspection by the Show Veterinarian at the discretion of the Show Committee. Any equine deemed contagious by the Show Veterinarian must be removed from the show grounds immediately. Any animal on the grounds in immediate need of veterinarian care will be treated at the expense of the owner, if the animal's owner(s) cannot be located.

PADDOCK PROCEDURES

Exhibitors must check in with the paddock. The paddock will call exhibitors to enter the arena in their posted order of go. Only the exhibitors in the class that immediately follows the class in the arena will be allowed in the paddock area. If needed, a handler may be permitted in the paddock area for youth and amateur classes. Absolutely no sprays will be allowed in the paddock area.

Barn calls are a courtesy and will be made for each class. It is the exhibitor's responsibility to report to their class on time.

Gate Rule

A one-minute gate rule will be enforced. After the final call for a class has been given, the gate will be closed in one minute, and no late participants will be accepted. Barn calls are made as a courtesy. It is the responsibility of the exhibitor to be aware of the progression of the show and be ready for their class when it enters the arena. No refunds for missed classes.

Class Conflict

In the event that a horse or exhibitor is entered in two classes in separate arenas that have a potential to be showing at the same time, the Paddock Master of each arena must be notified by filing a class conflict notification with each paddock at least 2 classes prior to conflict. The Paddock Master will make an attempt to accommodate conflicts. Please keep the Paddock Master of each arena advised if your situation changes. Class Conflict Forms are available at all Paddocks.

Split Classes

Any rail class deemed necessary by the Show Staff will be split.

All recalls from the average card will be announced in random order by exhibitor number and will retire to the Paddock area until called for the final go.

Rail Classes Timer

In all rail classes, a maximum time will be set for exhibitors to enter the arena. A timer will be visible to the Paddock area. When time has expired, the gate will be closed and no one will be allowed to enter the arena.

Tack Changes

All tack changes must be pre-scheduled with the Paddock Master on an official request form. Three minutes after the final class call will be allowed for all changes to be made in the Paddock Area.

Working Order

All individual work classes will have a working order. The order will be posted in the make-up area. Show management reserves the right to make changes as deemed necessary. If an exhibitor does not show up for their turn in the working order, it will be considered a missed class and they WILL NOT be moved in the order.

Showcases at Color Breed Congress

Cash Challenge Classes - \$300 added to each class
Cash for Color Stallion Program



STATE LINE TACK®

We make riding affordable.™

State Line Tack® is a proud sponsor of the PtHA.

Best of luck to everyone at the Color Breed Congress.



RECEIVE **30% OFF**

Your next **StateLineTack.com** order with code **PAPTHA30**

plus **7%** goes back to the **Pinto Horse Association!**



Anchor Graphics Inc.

**YOUR
CUSTOM PRINTING
MANUFACTURER**

Home
of the
RARE BREED

Labels & More

COME RIDE WITH THE RARE BREED

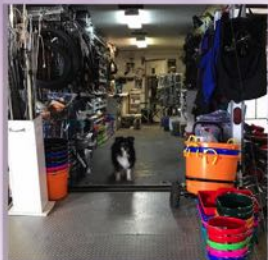
- Custom Indoor Labels
- Dry Erase Signs
- Vinyl Lettering
- "Property Of" Labels & Tags
- Custom Banners
- Business Cards
- Custom Signs
- Door Hangers
- ...and so much more!



www.anchorgraphics.com 972-422-4300



HERRONS TACK - HERRONSTACK.COM
YOUR ONE STOP SHOP FOR DRIVING & EQUINE SUPPLIES



HERRONS TACK - HERRONSTACK.COM
33604 OLD PORTLAND ROAD - ADEL, IOWA - 50003 - 515-491-8597

**FOLLOW US ON SOCIAL MEDIA TO KEEP UP WITH WHAT'S
HAPPENING AT THE SHOW!**



#COLORBREEDCONGRESS

CLASS/HIGH POINT TABULATION RULES

Point Tabulation

Association points (ROM, National, etc) will be earned following the rules of the respective association.

Class Placings

A four-judge system will be used at this show with the low card being dropped before the average card is tabulated. The averaging system used by PtHA® is as follows: equine are given an advantage or “weighted” credit for receiving first place on any judge’s card.

Scores will be awarded based on the following:

1st place – 0	6th place – 6
2nd place – 2	7th place – 7
3rd place – 3	8th place – 8
4th place – 4	9th place – 9
5th place – 5	10th place – 10

All equine not appearing on a judge’s card will receive 1 more point than the last equine placed in the class. Points from all three judges’ cards are totaled and the entry with the lowest score wins on the average card.

Tabulation Error

If a tabulation error is suspected, a written inquiry may be presented to the Show Office within 24 hours after the completion of the affected class without using the protest procedure, EXCEPT AT THE END OF THE SHOW WHEN ALL INQUIRIES MUST BE GIVEN BEFORE THE AWARDS ARE PRESENTED. The PtHA® reserves the right to correct such an error without recourse from entrants.

Class Tie Breaker

One judge is designated as the tiebreaker for each class. In the event of a tie, the entry appearing highest on the tiebreaker judge’s card is placed highest in the average. The judge designated as tiebreaker will be alternated from class to class.

High Point Rules - Color Breed Congress®

All classes in which an Equine, YA/Equine or AM/Equine is eligible will count toward High Point awards in their respective divisions. Cash Challenge, Cash for Color classes and Grand/Reserve Halter classes do not count for High Points. Halter does not count for Walk/Trot or Novice High Point. High Point awards will not be final until the last class in the division has been tabulated. Awards will only be released after the tabulation is final. Ranch classes will not count towards the overall PtHA®, ABRA, or PHBA High Points. They will all have separate High Point awards.

High Point Tabulation

High Point awards do not follow ROM standards. Therefore, it is possible to have the greatest number of ROM points in a division, and not be High Point for the show.

High Point awards will be tabulated using the average card according to the following scale.

	1st Place	2nd Place	3rd Place	4th Place	5th Place	6th Place
# of entries	6+	5	4	3	2	1

1st Place	6	5	4	3	2	1
2nd Place	5	4	3	2	1	
3rd Place	4	3	2	1		
4th Place	3	2	1			
5th Place	2	1				
6th Place	1					

High Point Ties

If there is a tie for 1st or 2nd place for High Point or Reserve High Point in a division, ties will be broken first on the Equine, Youth/Equine or Amateur/Equine combination, earning the greatest number of first places (on the average judge card for each class entered). Then, second place through seventh place. If a tie still remains, the winner will be the entrant who entered in the greatest number of classes. If a tie still remains, then the tie will be broken in favor of the entrant who has the lowest total score on all individual judge cards for all classes entered.

FACILITY RULES

Alcohol

It is unlawful for any person or organization to bring or have upon the premises any alcoholic beverages other than the alcoholic beverages that the licensed caterer of the show grounds is authorized to sell. Any packaged liquor brought onto the fairgrounds will be confiscated.

Dogs and Pets

Owners assume all liability for any pets brought to the show. All pets must be on leashes while on the grounds. No pets of any kind are allowed in the arena at any time. As a courtesy to fellow exhibitors, pet owners are required to pick up and dispose of ALL animal waste, especially in the courtyard and esplanade areas.

Fire Safety

The use of electric, flame or space heaters and air conditioners is prohibited in the barn area. Use of extension cords in stall areas, requires Ground Fault Interrupter Protection (GFCI). These cords have a test and reset button on the cord, and most cords have the words "GFCI protected" printed on the cord. All 120-volt extension cords must be three-wire grounded, (have a three-prong plug on the end of the cord). Frayed or damaged cords may not be used. Fire Inspectors will check the premises for compliance.

Golf Carts and Scooters

Golf Carts and scooters are allowed on the show grounds, however, for the safety of fellow exhibitors no golf carts,

scooters, bicycles or other personal motorized vehicles will be allowed inside the barns at any time (except for staff and handicap vehicles). Handicap vehicles may obtain special permission at the Horse Show Office. ANY person driving ANY motorized vehicle must possess a current drivers license.

Parking/Trailer Parking

Due to move-in congestion, please limit unloading time as much as possible. Trailers must be parked in designated secured trailer parking after unloading, NOT IN FRONT OF BARNs. Handicap parking spaces are for Handicap Permit holders only.

Security

Security of personal property (equine, tack, trailers, vehicles, etc.) is the responsibility of each individual. Expo Square maintains security patrols of the fairgrounds and barn area each day of the Color Breed Congress®. However, PtHA® and Expo Square will not be held responsible for personal property.

Signs/Advertisements

Bulletin boards are provided for the posting of signs, advertisements and posters. Any sign posted on a painted surface is strictly prohibited by Expo Square. A fine will be assessed for any violations.

HAPPY TRAILS

Thanks for joining us at the 2023 Color Breed Congress®! We loved having you and hope you had a great time. Be sure to travel safe.

Party Time!



Join us for the annual
Congress Cookout &
fundraiser sponsored
by the Pinto Heritage
Foundation.

Wednesday, Nov.8

Congress ClassVideos

Purchase a video of your class by
grabbing an order form from Pinto
Place or the Show Office.

To purchase your video, please fill
out a form, providing your
class number and contact
information and return it to the
Show Office.

Each class costs \$40

For more information,
contact the magazine
department at
magazine@pinto.org

FEE SCHEDULE

COLOR BREED CONGRESS _ NOVEMBER 3 – 11, 2023

PHA/ PHBA/ABRA/Long Ears/All Breed Ranch Fees

	Postmarked by Oct. 5	Postmarked after Oct. 5	At Show
Cash Challenge classes	\$100/class	\$150/class	\$250/class
OPEN Class Entry Fee	\$115/class	\$135/class	\$155/class
OPEN NSBA Fee - add to class fee	\$50/class	\$50/class	\$50/class
AMATEUR Class Entry Fee	\$100/class	\$120/class	\$140/class
Flat Fee: 1 Horse/1 Rider /AM* 10 class maximum	\$900/unit	\$1100/unit	\$1300/unit
YOUTH Class Entry Fee	\$95/class	\$115/class	\$135/class
Flat Fee: 1 Horse/1 Rider /YA* 10 class maximum	\$850/unit	\$1050/unit	\$1250/unit
*Flat Fees do not include NSBA Fee or Equipment Fees			
AM/YA NSBA Fee - add to class fee	\$10/class	\$10/class	\$10/class
Equipment Fees			
Per Trail/Ranch Trail Class	\$25/class	\$25/class	\$25/class
Per Obstacle Driving Class	\$25/class	\$25/class	\$25/class
Office fee-once per equine	\$60/equine	\$60/equine	\$60/equine
PHBA Fees			
PHBA National Fee \$28/horse			
ABRA Fees			
ABRA National Fee \$8/horse			
Stall Fees			
Super Duty Arena Barn (heated)	\$295		
Central Park Hall (heated)	\$295		
Oklahoma Ford Dealer Barn (enclosed)	\$260		
Bronco Barn (enclosed)	\$260		
Super Duty Barn (covered)	\$210		
Day Stalls	\$100/day		

Starting August 1, 2022, a 3% debit/credit card transaction fee will be added.

****Flat Fees do not include NSBA Fee or Equipment Fees***



BOOT BARN[®]

OVER 350 STORES NATIONWIDE

PROUD SPONSOR OF THE COLOR BREED CONGRESS | BOOTBARN.COM



UPSCALE LUXURY IN THE HEART OF DOWNTOWN

Enjoy our premier location downtown, within walking distance to more than 50 restaurants and entertainment venues including the BOK Center.

DOWNTOWN TULSA

100 E 2ND STREET

TULSA, OK 74103

918.582.9000

[TULSA.REGENCY.HYATT.COM](https://www.tulsa.hyatt.com)



HYATT
REGENCY®

SCHEDULE LEGEND

TYPES	SEATS	AGE DIVISIONS	
ST – Stock Type HN – Hunter Type	HN – Hunt Seat	YA – Youth YA Jr – 13 & Under YA Sr – 14-18 YA Novice – 18 & Under YA Walk/Trot – 11-18 YA Walk/Trot – 10 & Under YA Leadline – 8 & Under	AM – Amateur AM Jr – 19-39 AM Sr – 40-54 AM Elite – 55 & Over AM Jr Walk/Trot – 19-39 AM Sr/El Walk/Trot – 40 & Over AM Novice – 19 & Over OP – Open
<ul style="list-style-type: none"> • All classes are open to all Types and Seats unless otherwise noted (excluding Solid Pintos). • All AM and YA classes are all ages unless otherwise noted. • Numbered ages (5 & under, 6 & over, etc.) refer to age of horse. 			



CBC SCHEDULE

Wednesday, November 1

- Noon - Horses move in (24 hours)
- Noon - 6 pm - Show office & ID Station open

Thursday, November 2

- 8 am - 6 pm - Show office open
- 8 am - 6 pm - ID Station open

Friday, November 3 thru Saturday, November 11

- 7 am - 6 pm - Show office open
- 7 am - 6 pm - ID Station open

Friday, November 3 - Ford Truck Arena - 7:30 am

- | | |
|----|---|
| 1 | PtHA - AM Jr Western Showmanship, ST/HN |
| 2 | PtHA - AM Sr Western Showmanship, ST/HN |
| 3 | PtHA - AM Elite Western Showmanship, ST/HN |
| 4 | PtHA - AM Novice Western Showmanship, ST/HN |
| 5 | PtHA - AM Jr W/T Western Showmanship, ST/HN |
| 6 | PtHA - AM Sr W/T Western Showmanship, ST/HN |
| 7 | PtHA - AM El W/T Western Showmanship, ST/HN |
| 8 | PtHA - AM Bareback Western Horsemanship, ST/HN |
| 9 | PtHA - AM Novice Western Horsemanship, ST/HN |
| 10 | Cash for Color Non Pro Western Pleasure, W/T (NSBA Color) |

- | | |
|----|--|
| 11 | PtHA - AM Jr Western Horsemanship, ST/HN |
| 12 | PtHA - AM Sr Western Horsemanship, ST/HN |
| 13 | PtHA - AM Elite Western Horsemanship, ST/HN |
| 14 | PtHA - AM Sr W/T Western Horsemanship, ST/HN |
| 15 | PtHA - AM El W/T Western Horsemanship, ST/HN |

Friday, November 3 - Mustang Arena - 7:30 am

- | | |
|----|---|
| 16 | PtHA - YA Novice Western Showmanship, ST/HN |
| 17 | PtHA - YA Jr Western Showmanship, ST/HN |
| 18 | PtHA - YA Sr Western Showmanship, ST/HN |
| 19 | PtHA - YA W/T, 10 & u Western Showmanship, ST/HN |
| 20 | PtHA - YA W/T, 11 -18 Western Showmanship, ST/HN |
| 21 | PtHA - YA Jr Bareback Western Horsemanship, ST/HN |
| 22 | PtHA - YA Sr Bareback Western Horsemanship, ST/HN |
| 23 | PtHA - YA Novice Western Horsemanship, ST/HN |
| 24 | PtHA - YA Jr Western Horsemanship, ST/HN |
| 25 | PtHA - YA Sr Western Horsemanship, ST/HN |
| 26 | PtHA - YA Western Horsemanship, ST/HN, Solid |
| 27 | PtHA - YA Western Riding, ST/HN |
| 28 | PtHA - AM Western Riding, ST/HN, Solid |
| 29 | PtHA - AM Western Riding, ST/HN |

Friday, November 3 - Ranger Arena - 7:30 am

- 30 PtHA - AM W/T Western Showmanship, ST/HN, Solid
- 31 PtHA - AM Western Showmanship, ST/HN, Solid
- 32 PtHA - YA Western Showmanship, ST/HN, Solid
- 33 PtHA - YA W/T, 10 & u Western Showmanship, ST/HN, Solid
- 34 PtHA - YA W/T, 11-18 Western Showmanship, ST/HN, Solid
- 35 PtHA - AM Bareback Western Horsemanship, ST/HN, Solid
- 36 PtHA - YA W/T, 10 & u Western Horsemanship, ST/HN
- 37 PtHA - YA W/T 10 & u Western Horsemanship, ST/HN, Solid
- 38 PtHA - YA W/T, 11-18 Western Horsemanship, ST/HN
- 39 PtHA - YA W/T, 11-18 Western Horsemanship, ST/HN, Solid
- 40 PtHA - AM Western Horsemanship, ST/HN, Solid
- 41 PtHA - AM W/T Western Horsemanship, ST/HN, Solid
- 42 PtHA - AM Jr W/T Western Horsemanship, ST/HN

- 67 PtHA - YA Western Pleasure, ST/HN, Solid (NSBA)
- 68 PtHA - YA Jr Western Pleasure, ST/HN (NSBA)
- 69 PtHA - YA Sr Western Pleasure, ST/HN (NSBA)
- 70 PtHA - YA Leadline 8 & u, Western Pleasure, Solid
- 71 PtHA - YA Leadline, 8 & u, Western Pleasure
- 72 PtHA - YA Jr Disciplined Rail Western, ST/HN
- 73 PtHA - YA Sr Disciplined Rail Western, ST/HN
- 74 PtHA - YA Discipline Rail Western, ST/HN, Solid
- 75 PtHA - AM Discipline Rail Western, ST/HN, Solid
- 76 PtHA - YA Jr Ideal Pinto Western, ST/HN
- 77 PtHA - YA Sr Ideal Pinto Western, ST/HN
- 78 PtHA - AM Ideal Pinto Western, ST/HN, Solid
- 79 PtHA - YA Ideal Pinto Western, ST/HN, Solid
- 80 PtHA - OP Ideal Pinto Western, ST/HN, Solid

Saturday, November 4 - Ford Truck Arena - 7:30 am

- 43 PtHA - AM Novice Western Pleasure, ST/HN
- 44 PtHA - AM Western Pleasure, ST/HN, Solid (NSBA)
- 45 PtHA - OP West Pl, ST/HN, 5 & U (NSBA)
- 46 PtHA - AM Jr Western Pleasure, ST/HN (NSBA)
- 47 PtHA - AM Sr Western Pleasure, ST/HN (NSBA)
- 48 PtHA - AM Elite Western Pleasure, ST/HN (NSBA)
- 49 PtHA - OP Western Pleasure, ST/HN, Solid (NSBA)
- 50 Cash for Color Open Western Pleasure, 3 yr olds (NSBA Color)
- 51 Cash for Color Open Western Pleasure, 2 yr olds (NSBA Color)
- 52 Cash Challenge West Pleasure, all ages, all divisions
- 53 PtHA - AM Jr Disciplined Rail Western, ST/HN
- 54 PtHA - AM Sr Disciplined Rail Western, ST/HN
- 55 PtHA - AM Elite Disciplined Rail Western, ST/HN
- 56 PtHA - AM Jr W/T Ideal Pinto Western, ST/HN
- 57 PtHA - AM Sr W/T Ideal Pinto Western, ST/HN
- 58 PtHA - AM El W/T Ideal Pinto Western, ST/HN
- 59 PtHA - AM Jr Ideal Pinto Western, ST/HN
- 60 PtHA - AM Sr Ideal Pinto Western, ST/HN
- 61 PtHA - AM Elite Ideal Pinto Western, ST/HN

after last class - YA Halter/Longe Line practice

Saturday, November 4 - Mustang Arena - 7:30 am

- 62 PtHA - OP Western Pleasure, 2 yo Sn Bit, ST/HN, Solid (NSBA)
- 63 PtHA - AM Jr W/T Western Pleasure, ST/HN
- 64 PtHA - AM Sr W/T Western Pleasure, ST/HN
- 65 PtHA - AM El W/T Western Pleasure, ST/HN
- 66 PtHA - AM W/T Western Pleasure, ST/HN, Solid

Saturday, November 4 - Ranger Arena

YEDA Show

Saturday, November 4, Explorer Arena

9 am - all night - Ranch Trail practice

Sunday, November 5 - Ford Truck Arena - 7:30 am

- 81 PtHA - YA W/T, 10 & u Western Pleasure, ST/HN, Solid
- 82 PtHA - YA W/T, 10 & u Western Pleasure, ST/HN
- 83 PtHA - YA W/T, 11-18 Western Pleasure, ST/HN, Solid
- 84 PtHA - YA W/T, 11-18 Western Pleasure, ST/HN
- 85 PtHA - YA Novice Western Pleasure, ST/HN
- 86 PtHA - OP West Pleas, 2 yo Sn Bit, ST/HN, (NSBA)
- 87 PtHA - OP West Pl, ST/HN, 6 & O (NSBA)
- 88 Cash for Color Non Pro Western Pleasure, 5 & under (NSBA Color)
- 89 PtHA - AM Jr W/T Disciplined Rail Western, ST/HN
- 90 PtHA - AM Sr W/T Disciplined Rail Western, ST/HN
- 91 PtHA - AM El W/T Disciplined Rail Western, ST/HN
- 92 PtHA - YA Halter Mares, ST/HN
- 93 PtHA - YA Halter Mares, ST/HN, Solid
- 94 PtHA - YA Performance Halter Mares, ST/HN
- 95 PtHA - YA Performance Halter Mares, ST/HN, Solid
- 96 PtHA - YA Halter Geldings, ST/HN
- 97 PtHA - YA Halter Geldings, ST/HN, Solid
- 98 PtHA - YA Performance Halter Geldings, ST/HN
- 99 PtHA - YA Performance Halter Geldings, ST/HN, Solid
- 100 PtHA - YA Tobiano Color, ST/HN
- 101 PtHA - YA Overo Color, ST/HN
- 102 PtHA - OP Western Riding, ST/HN (NSBA)
- 103 PtHA - OP Western Riding, ST/HN, Solid (NSBA)

after last class - AM Halter/Longe Line practice

121 ABRA - OP Ranch Trail (NSBA)

Sunday, November 5, Ranger Arena
YEDA Show

after awards - AM/OP Halter/Longe Line practice

Sunday, November 5, Explorer Arena

9 am - night - Trail practice

Monday, November 6 - Ford Truck Arena - 7:30 am

- 122 PTHA - OP Green Western Pleasure, ST/HN
- 123 Cash for Color Non Pro Western Pleasure, 6 & over (NSBA Color)
- 124 Cash Challenge West Pleasure, Snaffle Bit, 2 yo, Horse
- 125 Cash Challenge Western Pleasure Snaf Bit, 3 & 4 yo Horse
- 126 PTHA - OP Ideal Pinto Western, ST/HN
- 127 Cash for Color Non Pro Western Pleasure, 3 yr olds (NSBA Color)
- 128 PTHA - OP Disciplined Rail Western, ST/HN
- 129 PTHA - OP Discipline Rail Western, ST/HN, Solid
- 130 PTHA - OP Halter Stall/Geld, ST/HN, Solid, Weanlings
- 131 PTHA - OP Halter Stall/Geld, ST/HN, Solid, Yearlings
- 132 PTHA - OP Halter Stall/Geld, ST/HN, Solid, 2 & 3 Yr Old
- 133 PTHA - OP Halter Stall/Geld, ST/HN, Solid, 4 & Older
- 134 PTHA - OP Performance Halter Stall/Geldings, ST/HN, Solid
- 135 PTHA - OP Grand & Reserve Stallions/Geldings, ST/HN, Solid
- 136 PTHA - AM Halter Mares, ST/HN, 2 & under
- 137 PTHA - AM Halter Mares, ST/HN, 3 & over
- 138 PTHA - AM Performance Halter Mares, ST/HN
- 139 PTHA - AM Yearling Longe Line, Hunter Type (NSBA)
- 140 PTHA - AM Two Year Old Longe Line, ST/HN Type, (NSBA)
- 141 PTHA - AM Halter Geldings, ST/HN, 2 & under
- 142 PTHA - AM Halter Geldings, ST/HN, 3 & over
- 143 PTHA - AM Halter Stallions, ST/HN, 2 & under
- 144 PTHA - AM Halter Stallions, ST/HN, 3 & over
- 145 PTHA - AM Performance Halter Stallion/Geldings, ST/HN
- 146 PTHA - AM Yearling Longe Line, Stock Type (NSBA)
- 147 Cash for Color Non Pro Longe Line - Western (NSBA Color)
- 148 Cash for Color Non Pro Longe Line - Hunter (NSBA Color)

after last class - Halter/Longe Line practice

Monday, November 6 - Mustang Arena - 7:30 am

- 149 Cash Challenge Ranch Riding, all ages
- 150 All Breed - YA W/T Ranch Riding

Sunday, November 5 - Ford Truck Arena - 7:30 am

- 81 PTHA - YA W/T, 10 & u Western Pleasure, ST/HN, Solid
- 82 PTHA - YA W/T, 10 & u Western Pleasure, ST/HN
- 83 PTHA - YA W/T, 11-18 Western Pleasure, ST/HN, Solid
- 84 PTHA - YA W/T, 11-18 Western Pleasure, ST/HN
- 85 PTHA - YA Novice Western Pleasure, ST/HN
- 86 PTHA - OP West Pleas, 2 yo Sn Bit, ST/HN, (NSBA)
- 87 PTHA - OP West Pl, ST/HN , 6 & O (NSBA)
- 88 Cash for Color Non Pro Western Pleasure, 5 & under (NSBA Color)
- 89 PTHA - AM Jr W/T Disciplined Rail Western, ST/HN
- 90 PTHA - AM Sr W/T Disciplined Rail Western, ST/HN
- 91 PTHA - AM EI W/T Disciplined Rail Western, ST/HN
- 92 PTHA - YA Halter Mares, ST/HN
- 93 PTHA - YA Halter Mares, ST/HN, Solid
- 94 PTHA - YA Performance Halter Mares, ST/HN
- 95 PTHA - YA Performance Halter Mares, ST/HN, Solid
- 96 PTHA - YA Halter Geldings, ST/HN
- 97 PTHA - YA Halter Geldings, ST/HN, Solid
- 98 PTHA - YA Performance Halter Geldings, ST/HN
- 99 PTHA - YA Performance Halter Geldings, ST/HN, Solid
- 100 PTHA - YA Tobiano Color, ST/HN
- 101 PTHA - YA Overo Color, ST/HN
- 102 PTHA - OP Western Riding, ST/HN (NSBA)
- 103 PTHA - OP Western Riding, ST/HN, Solid (NSBA)

after last class - AM Halter/Longe Line practice

Sunday, November 5 - Mustang Arena - 7:30 am

- 104 All Breed - YA W/T Ranch Trail
- 105 All Breed - AM W/T Ranch Trail
- 106 All Breed - YA Ranch Trail
- 107 PTHA - YA Ranch Trail, ST/HN (NSBA)
- 108 PTHA - YA Ranch Trail, ST/HN, Solid (NSBA)
- 109 PHBA - YA Ranch Trail (NSBA)
- 110 ABRA - YA Ranch Trail (NSBA)
- 111 All Breed - AM Ranch Trail
- 112 PTHA - AM Ranch Trail, ST/HN (NSBA)
- 113 PTHA - AM Ranch Trail, ST/HN, Solid (NSBA)
- 114 PHBA - AM Ranch Trail (NSBA)
- 115 ABRA - AM Ranch Trail (NSBA)
- 116 All Breed - OP Ranch Trail
- 117 PTHA - OP Ranch Trail, ST/HN (NSBA)
- 118 PTHA - OP Ranch Trail, ST/HN, Solid (NSBA)
- 119 PTHA - OP Ranch Trail, Mule
- 120 PHBA - OP Ranch Trail (NSBA)

- 151 All Breed - YA Ranch Riding
- 152 PtHA - YA Ranch Riding, ST/HN (NSBA)
- 153 PtHA - YA Ranch Riding, ST/HN, Solid (NSBA)
- 154 PHBA - YA Ranch Riding (NSBA)
- 155 ABRA - YA Ranch Riding (NSBA)
- 156 All Breed - AM W/T Ranch Riding
- 157 All Breed - AM Ranch Riding
- 158 PtHA - AM Ranch Riding, ST/HN (NSBA)
- 159 PtHA - AM Ranch Riding, ST/HN, Solid (NSBA)
- 160 PHBA - AM Ranch Riding (NSBA)
- 161 ABRA - AM Ranch Riding (NSBA)
- 162 PtHA - OP Ranch Riding, Mule
- 163 PHBA - OP Ranch Riding (NSBA)
- 164 ABRA - OP Ranch Riding (NSBA)
- 165 PtHA - OP Ranch Riding, ST/HN (NSBA)
- 166 PtHA - OP Ranch Riding, ST/HN, Solid (NSBA)
- 167 All Breed - OP Ranch Riding

after last class - Ranch Reining practice for
1 hour

Monday, November 6 - Ranger Arena - 7:30 am

- 168 PtHA - YA W/T, 10 & u Trail, ST/HN
- 169 PtHA - YA W/T, 10 & u Trail, ST/HN, Solid
- 170 PtHA - YA W/T, 11-18 Trail, ST/HN
- 171 PtHA - YA W/T, 11 -18 Trail, ST/HN, Solid
- 172 PtHA - YA Novice Trail, ST/HN
- 173 PtHA - YA Jr Trail, ST/HN (NSBA)
- 174 PtHA - YA Sr Trail, ST/HN (NSBA)
- 175 PtHA - YA Trail, ST/HN, Solid (NSBA)
- 176 PtHA - AM Halter Mares, ST/HN, Solid
- 177 PtHA - AM Performance Halter Mares, ST/HN, Solid
- 178 PtHA - AM Yearling Longe Line, Hunter Type, Solid (NSBA)
- 179 PtHA - AM Two Year Old Longe Line, ST/HN Type, Solid (NSBA)
- 180 PtHA - AM Halter Stallion/Geldings, ST/HN, Solid
- 181 PtHA - AM Performance Halter Stallion/Geldings, ST/HN, Solid
- 182 PtHA - AM Yearling Longe Line, Stock Type, Solid (NSBA)
- 183 PtHA - OP Halter Mares, ST/HN, Solid, Weanlings
- 184 PtHA - OP Halter Mares, ST/HN, Solid, Yearlings
- 185 PtHA - OP Halter Mares, ST/HN, Solid, 2 & 3 Yr Old
- 186 PtHA - OP Halter Mares, ST/HN, Solid, 4 & Older
- 187 PtHA - OP Performance Halter Mares, ST/HN, Solid
- 188 PtHA - OP Grand & Reserve Mares, ST/HN, Solid

Monday, November 6 - Explorer Barn

Two YO In Hand, OP & AM Trail practice - 9 am
through the night

Tuesday, November 7 - Ford Truck Arena - 7:30 am

- 189 PtHA - AM Tobiano Color, ST/HN
- 190 PtHA - AM Overo Color, ST/HN
- 191 PtHA - OP Yearling Longe Line, Stock Type, Solid (NSBA)
- 192 PtHA - OP Yearling Longe Line, Hunter Type, Solid (NSBA)
- 193 PtHA - OP Yearling Longe Line, Hunter Type (NSBA)
- 194 PtHA - OP Halter Mares, ST/HN, Weanlings
- 195 PtHA - OP Halter Mares, ST/HN, Yearlings
- 196 PtHA - OP Halter Mares, ST/HN, 2 Yr Old
- 197 PtHA - OP Halter Mares, ST/HN, 3 Yr Old
- 198 PtHA - OP Halter Mares, ST/HN, 4 Yr Old
- 199 PtHA - OP Halter Mares, ST/HN, 5 & Older
- 200 PtHA - OP Performance Halter Mares, ST/HN
- 201 PtHA - OP Grand & Reserve ST/HN Mares
- 202 PtHA - OP Yearling Longe Line, Stock Type (NSBA)
- 203 PtHA - OP Halter Geldings, ST/HN, Weanlings
- 204 PtHA - OP Halter Geldings, ST/HN, Yearlings
- 205 PtHA - OP Halter Geldings, ST/HN, 2 Yr Old
- 206 PtHA - OP Halter Geldings, ST/HN, 3 Yr Old
- 207 PtHA - OP Halter Geldings, ST/HN, 4 Yr Old
- 208 PtHA - OP Halter Geldings, ST/HN, 5 & Older
- 209 PtHA - OP Performance Halter Geldings, ST/HN
- 210 PtHA - OP Grand & Reserve ST/HN Gelding
- 211 PtHA - OP Two Year Old Longe Line, ST/HN Type, Solid (NSBA)
- 212 Cash for Color Open Longe Line - Western (NSBA Color)
- 213 Cash for Color Open Longe Line - Hunter (NSBA Color)
- 214 PtHA - OP Halter Stallions, ST/HN, Weanling
- 215 PtHA - OP Halter Stallions, ST/HN, Yearling
- 216 PtHA - OP Halter Stallions, ST/HN, 2 Yr Old
- 217 PtHA - OP Halter Stallions, ST/HN, 3 Yr Old
- 218 PtHA - OP Halter Stallions, ST/HN, 4 Yr Old
- 219 PtHA - OP Halter Stallions, ST/HN, 5 & Older
- 220 PtHA - OP Performance Halter Stallions, ST/HN
- 221 PtHA - OP Grand & Reserve ST/HN Stallion

Tuesday, November 7 - Mustang Arena - 7:30 am

- 222 All Breed - YA Ranch Reining
- 223 PtHA - YA Ranch Reining, ST/HN
- 224 PtHA - YA Ranch Reining, ST/HN, Solid
- 225 PHBA - YA Ranch Reining
- 226 ABRA - YA Ranch Reining
- 227 All Breed - AM Ranch Reining

- 228 PtHA - AM Ranch Reining, ST/HN
- 229 PtHA - AM Ranch Reining, ST/HN, Solid
- 230 PHBA - AM Ranch Reining
- 231 ABRA - AM Ranch Reining
- 232 All Breed - OP Ranch Reining
- 233 PtHA - OP Ranch Reining, ST/HN
- 234 PtHA - OP Ranch Reining, ST/HN, Solid
- 235 PtHA - OP Ranch Reining, Mule
- 236 PHBA - OP Ranch Reining
- 237 ABRA - OP Ranch Reining
- 238 All Breed - YA W/T Ranch Rail Pleasure
- 239 All Breed - YA Ranch Rail Pleasure
- 240 PtHA - YA Ranch Rail Pleasure, ST/HN (NSBA)
- 241 PtHA - YA Ranch Rail Pleasure, ST/HN, Solid (NSBA)
- 242 PHBA - YA Ranch Rail Pleasure (NSBA)
- 243 ABRA - YA Ranch Rail Pleasure (NSBA)
- 244 Cash for Color Non Pro Ranch Rail, 5 & under (NSBA Color)
- 245 All Breed - AM W/T Ranch Rail Pleasure
- 246 All Breed - AM Ranch Rail Pleasure
- 247 Cash for Color Open Ranch Rail, 3 yr olds (NSBA Color)
- 248 PtHA - AM Ranch Rail Pleasure, ST/HN (NSBA)
- 249 PtHA - AM Ranch Rail Pleasure, ST/HN, Solid (NSBA)
- 250 PHBA - AM Ranch Rail Pleasure (NSBA)
- 251 ABRA - AM Ranch Rail Pleasure (NSBA)
- 252 Cash for Color Non Pro Ranch Rail, 3 yr olds (NSBA Color)
- 253 All Breed - OP Ranch Rail Pleasure
- 254 PtHA - OP Ranch Rail Pleasure, ST/HN (NSBA)
- 255 PtHA - OP Ranch Rail Pleasure, ST/HN, Solid (NSBA)
- 256 PtHA - OP Ranch Rail Pleasure, Mule
- 257 PHBA - OP Ranch Rail Pleasure (NSBA)
- 258 ABRA - OP Ranch Rail Pleasure (NSBA)
- 259 Cash for Color Non Pro Ranch Rail, 6 & over (NSBA Color)
- 260 Cash Challenge Ranch Rail Pleasure, all ages

Tuesday, November 7 - Ranger Arena - 7:30 am

- 261 PtHA - OP Two Yr Old In Hand Trail, ST/HN
- 262 PtHA - AM Two Yr Old In Hand Trail, ST/HN
- 263 PtHA - OP Two Yr Old In Hand Trail, ST/HN, Solid
- 264 PtHA - AM Two Yr Old In Hand Trail, ST/HN, Solid
- 265 PtHA - AM Jr W/T Trail, ST/HN
- 266 PtHA - AM Sr W/T Trail, ST/HN
- 267 PtHA - AM EI W/T Trail, ST/HN
- 268 PtHA - AM W/T Trail, ST/HN, Solid
- 269 PtHA - OP Green Trail, ST/HN
- 270 PtHA - AM Novice Trail, ST/HN

- 271 PtHA - AM Jr Trail, ST/HN (NSBA)
- 272 PtHA - AM Sr Trail, ST/HN (NSBA)
- 273 PtHA - AM Elite Trail, ST/HN (NSBA)
- 274 PtHA - AM Trail, ST/HN, Solid (NSBA)
- 275 PtHA - OP Trail, 5 & Under, ST/HN (NSBA)
- 276 PtHA - OP Trail, ST/HN, Solid (NSBA)
- 277 PtHA - OP Trail, 6 & Older, ST/HN (NSBA)

Obstacle Driving practice after last class - 1 hour

Tuesday, November 7 - Explorer Arena - 9 am - all night

Yearling In Hand, PHBA, ABRA, Long Ear Trail practice

Wednesday, November 8 - Ford Truck Arena - 7:30 am

- 278 Cash Challenge Yearling Longe Line, Stock Type Horse
- 279 PtHA - OP Tobiano Color, ST/HN
- 280 PtHA - OP Overo Color, ST/HN
- 281 Cash Challenge Yearling Longe Line, Hunter Type Horse
- 282 PtHA - OP Two Year Old Longe Line, ST/HN Type (NSBA)
- 283 PtHA - YA W/T, 10 & u Hunt Seat Equitation, ST/HN
- 284 PtHA - YA W/T, 11-18 Hunt Seat Equitation, ST/HN
- 285 PtHA - YA W/T, 10 & u Hunt Seat Equitation, ST/HN, Solid
- 286 PtHA - YA W/T, 11-18 Hunt Seat Equitation, ST/HN, Solid
- 287 Cash for Color Open Hunter Under Saddle, 2 yr olds (NSBA Color)
- 288 PtHA - YA Jr Bareback Hunt Seat Equitation, ST/HN
- 289 PtHA - YA Sr Bareback Hunt Seat Equitation, ST/HN
- 290 PtHA - YA Hunt Seat Equitation, ST/HN, Solid
- 291 PtHA - YA Jr Hunt Seat Equitation, ST/HN
- 292 PtHA - YA Sr Hunt Seat Equitation, ST/HN
- 293 PtHA - YA Novice Hunt Seat Equitation, ST/HN
- 294 Cash for Color Open Hunter Under Saddle, 3 yr olds (NSBA Color)

After last class - YA W/T 10 & U, YA W/T 10 & U Solid,
YA W/T 11 - 18, YA W/T 11 - 18 Solid High Points

Wednesday, November 8 - Mustang Arena - 7:30 am

- 295 PtHA - YA Ranch Horsemanship, ST/HN
- 296 PtHA - YA Ranch Horsemanship, ST/HN Solid

- 297 PtHA - AM Ranch Horsemanship, ST/HN
 298 PtHA - AM Ranch Horsemanship, ST/HN Solid
 299 All Breed - YA W/T Ranch Ideal
 300 All Breed - YA Ranch Ideal
 301 PtHA - YA Ranch Ideal, ST/HN
 302 PtHA - YA Ranch Ideal, ST/HN, Solid
 303 All Breed - AM W/T Ranch Ideal
 304 All Breed - AM Ranch Ideal
 305 PtHA - AM Ranch Ideal, ST/HN
 306 PtHA - AM Ranch Ideal, ST/HN Solid
 307 All Breed - OP Ranch Ideal
 308 PtHA - OP Ranch Ideal, ST/HN
 309 PtHA - OP Ranch Ideal, ST/HN, Solid
 310 PtHA - OP Ranch Ideal, Mule
 311 PtHA - YA Ranch Showmanship, ST/HN
 312 PtHA - YA Ranch Showmanship, ST/HN Solid
 313 PtHA - AM Ranch Showmanship, ST/HN
 314 PtHA - AM Ranch Showmanship, ST/HN Solid
 315 All Breed - YA Ranch Conformation
 316 PHBA - YA Ranch Conformation
 317 ABRA - YA 18 & u, Ranch Conformation
 318 PtHA - YA Ranch Conformation, ST/HN
 319 PtHA - YA Ranch Conformation, ST/HN, Solid
 320 All Breed - AM Ranch Conformation
 321 PHBA - AM Ranch Conformation
 322 ABRA - AM Ranch Conformation
 323 PtHA - AM Ranch Conformation, ST/HN
 324 PtHA - AM Ranch Conformation, ST/HN, Solid
 325 All Breed - OP Ranch Conformation
 326 PHBA - OP Ranch Conformation
 327 ABRA - OP Ranch Conformation
 328 PtHA - OP Ranch Conformation, ST/HN
 329 PtHA - OP Ranch Conformation, ST/HN, Solid
 330 PtHA - OP Ranch Conformation, Mule

After last class - Ranch High Points

Wednesday, November 8 - Ranger Arena - 7:30 am

- 331 ABRA - YA W/T, 18 & U Trail
 332 PHBA - AM W/T Trail
 333 PHBA - YA Trail (NSBA)
 334 ABRA - YA Trail 18 & under (NSBA)
 335 ABRA - OP Trail (NSBA)
 336 PHBA - OP Trail (NSBA)
 337 PHBA - AM Trail (NSBA)
 338 ABRA - AM Trail (NSBA)
 339 Cash Challenge Trail - all ages, all divisions
 340 PtHA - OP Yearling In Hand Trail, ST/HN, Solid
 341 PtHA - OP Yearling In Hand Trail, ST/HN

- 342 PtHA - AM Yearling In Hand Trail, ST/HN, Solid
 343 PtHA - AM Yearling In Hand Trail, ST/HN
 344 Cash for Color Non Pro Yearling In Hand Trail (NSBA Color)
 345 PtHA - OP Mini Donkey Western Trail In-Hand
 346 PtHA - OP Mini Mule Western Trail In-Hand
 347 PtHA - OP Donkey Training Level W/T Trail
 348 PtHA - YA Mule Western Trail
 349 PtHA - OP Mule Western Trail
 350 PtHA - OP Donkey Western Trail
 351 PtHA - AM Mule Western Trail
 352 PtHA - OP Western Trail, Utility
 353 PtHA - OP Mini Donkey Obstacle Driving
 354 PtHA - OP Mini Mule Obstacle Driving
 355 PtHA - OP Mule Obstacle Driving
 356 PtHA - OP Donkey Obstacle Driving

After last class - PHBA, ABRA Halter & Longe
 Line for 1 hour
 Long Ear Driving practice after Halter practice

Thursday, November 9 - Ford Truck Arena - 7:30 am

- 357 PtHA - YA Jr English Showmanship, ST/HN
 358 PtHA - YA Sr English Showmanship, ST/HN
 359 PtHA - YA English Showmanship, ST/HN, Solid
 360 PtHA - YA Jr Disciplined Rail English, ST/HN
 361 PtHA - YA Sr Disciplined Rail English, ST/HN
 362 PtHA - YA Discipline Rail English, ST/HN, Solid
 363 Cash for Color Non Pro Hunter Under Saddle, 3 yo (NSBA Color)
 364 PtHA - AM Discipline Rail English, ST/HN, Solid
 365 PtHA - OP Discipline Rail English, ST/HN, Solid
 366 PtHA - AM W/T Hunter Under Saddle, ST/HN, Solid
 367 Cash for Color Non Pro Hunter Under Saddle, W/T (NSBA Color)
 368 PtHA - YA Novice Hunter Under Saddle, ST/HN
 369 PtHA - YA W/T, 10 & u Hunter Under Saddle, ST/HN, Solid
 370 PtHA - YA W/T, 11-18 Hunter Under Saddle, ST/HN, Solid
 371 PtHA - YA W/T, 10 & u Hunter Under Saddle, ST/HN
 372 PtHA - YA W/T, 11-18 Hunter Under Saddle, ST/HN
 373 PtHA - YA Jr Hunter Under Saddle, ST/HN (NSBA)
 374 PtHA - YA Sr Hunter Under Saddle, ST/HN (NSBA)
 375 PtHA - YA Hunter Under Saddle, ST/HN, Solid (NSBA)
 376 PtHA - YA Jr Ideal Pinto English, ST/HN
 377 PtHA - YA Sr Ideal Pinto English, ST/HN
 378 PtHA - YA Ideal Pinto English, ST/HN, Solid

After last class - PtHA Youth High Points

Thursday, November 9 - Mustang Arena - 7:30 am

379	PtHA - AM Jr English Showmanship, ST/HN
380	PtHA - AM Sr English Showmanship, ST/HN
381	PtHA - AM Elite - English Showmanship, ST/HN
382	PtHA - AM English Showmanship, ST/HN, Solid
383	PtHA - AM Jr W/T English Showmanship, ST/HN
384	PtHA - AM Sr W/T English Showmanship, ST/HN
385	PtHA - AM EI W/T English Showmanship, ST/HN
386	PtHA - AM W/T English Showmanship, ST/HN, Solid
387	PtHA - OP Hunt U Saddle, 6 & O, ST/HN (NSBA)
388	PtHA - AM Novice Hunter Under Saddle, ST/HN
389	PtHA - OP Hunt U Saddle, 5 & U, ST/HN (NSBA)
390	PtHA - AM Jr W/T Ideal Pinto English, ST/HN
391	PtHA - AM Sr W/T Ideal Pinto English, ST/HN
392	PtHA - AM EI W/T Ideal Pinto English, ST/HN
393	PtHA - OP Donkey Training Level W/T Barrels
394	PtHA - OP Mule Barrels
395	PtHA - AM Mule Barrels
396	PtHA - YA Mule Barrels
397	PtHA - OP Donkey Barrels
398	PtHA - OP Donkey Training Level W/T Poles
399	PtHA - OP Mule Poles
400	PtHA - AM Mule Poles
401	PtHA - YA Mule Poles
402	PtHA - OP Donkey Poles

After last class - Mini Mule/Donkey Driving
practice for 1 hour

Thursday, November 9 - Ranger Arena - 7:30 am

403	PtHA - OP Pleasure Driving, Utility
404	PtHA - OP Mini Donkey Pleasure Driving
405	PtHA - OP Mini Mule Pleasure Driving
406	PtHA - OP Mule Pleasure Driving
407	PtHA - AM Mule Pleasure Driving
408	PtHA - OP Donkey Pleasure Driving
409	PtHA - OP Mule English Pleasure
410	PtHA - AM Mule English Pleasure
411	PtHA - YA Mule English Pleasure
412	PtHA - OP Donkey Training Level W/T English Pleasure
413	PtHA - OP Donkey English Pleasure
414	PtHA - OP English Pleasure, Utility
415	PtHA - AM Mule English Equitation
416	PtHA - YA Mule English Equitation
417	PHBA - OP 2 & u Halter Mares
418	PHBA - OP 3 & o Halter Mares

419	PHBA - OP Halter Performance Mares
420	PHBA - OP Grand & Reserve Mares
421	PHBA - AM Halter Mares
422	PHBA - AM Performance Halter Mares
423	PHBA - AM Grand & Reserve Mares
424	PHBA - YA Halter Mares, All ages
425	PHBA - YA Halter Performance Mares
426	PHBA - YA Halter Mares Grand & Reserve
427	ABRA - OP Halter 2 & under Mares
428	ABRA - OP Halter 3 & over Mares
429	ABRA - OP Halter Performance Mares
430	ABRA - Grand & Reserve Mares
431	ABRA - AM Halter Mares
432	ABRA - AM Halter Performance Mares
433	ABRA - AM Halter Grand & Resesse Mares
434	ABRA - YA Halter Mares
435	ABRA - BBP OP All Age Mares
436	PHBA - OP 2 & u Halter Geldings
437	PHBA - OP 3 & o Halter Geldings
438	PHBA - OP Halter Performance Geldings
439	PHBA - OP Grand & Reserve Geldings
440	PHBA - AM Halter Geldings
441	PHBA - AM Performance Halter Geldings
442	PHBA - AM Grand & Reserve Geldings
443	PHBA - YA Halter Geldings, All ages
444	PHBA - YA Halter Performance Geldings
445	PHBA - YA Geldings Grand & Reserve
446	ABRA - OP Halter 2 & under Gelding
447	ABRA - OP Halter 3 & over Gelding
448	ABRA - OP Halter Performance Gelding
449	ABRA - Grand & Reserve Gelding
450	ABRA - AM Halter Geldings
451	ABRA - AM Halter Performance Geldings
452	ABRA - AM Halter Grand & Reserve Geldings
453	ABRA - YA Halter Geldings
454	ABRA - BBP OP All Age Gelding
455	PHBA - OP 2 & u Halter Stallions
456	PHBA - OP 3 & o Halter Stallions
457	PHBA - OP Halter Performance Stallions
458	PHBA - OP Grand & Reserve Stallions
459	PHBA - AM Halter Stallions
460	PHBA - AM Halter Performance Stallions
461	PHBA - AM Grand & Reserve Stallions
462	ABRA - OP Halter 2 & under Stallion
463	ABRA - OP Halter 3 & over Stallion
464	ABRA - OP Halter Performance Stallion
465	ABRA - Grand & Reserve Stallion
466	ABRA - AM Halter Stallions
467	ABRA - AM Halter Performance Stallions
468	ABRA - AM Halter Grand & Reserve Stallions

- 469 ABRA - BBP OP All Age Stallions
- 470 PHBA - OP Color - all ages
- 471 ABRA - OP Dun Factor
- 472 PHBA - YA Color
- 473 PHBA - AM Color
- 474 PHBA - OP Yearling Longe Line (NSBA)
- 475 ABRA - OP Yearling Longe Line (NSBA)
- 476 PHBA - AM Yearling Longe Line (NSBA)
- 477 ABRA - AM Yearling Longe Line (NSBA)

Friday, November 10- Ford Truck Arena - 7:30 am

- 478 PtHA - AM Bareback Hunt Seat Equitation, ST/HN, Solid
- 479 Cash Challenge Hunter Under Saddle Snaffle Bit, 2 yo, Horse
- 480 PtHA - OP Hunter Under Saddle, ST/HN, Solid (NSBA)
- 481 PtHA - AM Hunter Under Saddle, ST/HN, Solid (NSBA)
- 482 PtHA - AM W/T Hunt Seat Equitation, ST/HN, Solid
- 483 PtHA - AM Hunt Seat Equitation, ST/HN, Solid
- 484 PtHA - OP Green Hunt U Saddle, ST/HN
- 485 Cash Challenge Hunter Under Saddle, all ages, all divisions
- 486 PtHA - AM Jr Hunter Under Saddle, ST/HN (NSBA)
- 487 PtHA - AM Sr Hunter Under Saddle , ST/HN (NSBA)
- 488 PtHA - AM Elite Hunter Under Saddle, ST/HN (NSBA)
- 489 PtHA - OP Hunt U Saddle, 2 YO Snaf Bit, ST/HN Solid, (NSBA)
- 490 PtHA - AM Jr W/T Disciplined Rail English, ST/HN
- 491 PtHA - AM Sr W/T Disciplined Rail English, ST/HN
- 492 PtHA - AM EI W/T Disciplined Rail English, ST/HN
- 493 PtHA - OP Ideal English, HN Seat, ST/HN, Solid
- 494 PtHA - AM Ideal Pinto English, ST/HN Solid

After last class - PtHA AM W/T, AM W/T Solid, AM

Novice, AM Solid High Points

Friday, November 10, Mustang Arena - 7:30 am

Friday, November 10, Mustang Arena - 7:30 am

- 495 PtHA - AM Bareback Hunt Seat Equitation, ST/HN
- 496 PtHA - AM Jr W/T Hunter Under Saddle, ST/HN
- 497 PtHA - AM Sr W/T Hunter Under Saddle, ST/HN
- 498 PtHA - AM EI W/T Hunter Under Saddle, ST/HN
- 499 PtHA - OP Hunt U Saddle, 2 YO Snaf Bit, ST/HN, (NSBA)
- 500 PtHA - AM Novice Hunt Seat Equitation, ST/HN
- 501 PtHA - AM Jr W/T Hunt Seat Equitation, ST/HN
- 502 PtHA - AM Sr W/T Hunt Seat Equitation, ST/HN
- 503 PtHA - AM EI W/T Hunt Seat Equitation, ST/HN
- 504 Cash for Color Non Pro Hunter Under Saddle, 6 & o

- (NSBA Color)
- 505 Cash for Color Non Pro Hunter Under Saddle, 5 & u (NSBA Color)

- 506 PtHA - AM Jr Hunt Seat Equitation, ST/HN
- 507 PtHA - AM Sr Hunt Seat Equitation, ST/HN
- 508 PtHA - AM Elite Hunt Seat Equitation, ST/HN
- 509 PtHA - OP Western Pleasure, Utility
- 510 PtHA - OP Mule Western Pleasure
- 511 PtHA - AM Mule Western Pleasure
- 512 PtHA - YA Mule Western Pleasure
- 513 PtHA - OP Donkey Training Level W/T Western Pleasure
- 514 PtHA - YA Leadline Walk Only Western Pleas, Donkey/Mules, 8 & u
- 515 PtHA - OP Donkey Western Pleasure
- 516 PtHA - OP Mini Donkey Disciplined Rail Driving
- 517 PtHA - OP Mini Mule Disciplined Rail Driving
- 518 PtHA - AM Mulemanship
- 519 PtHA - YA Mulemanship

Friday, November 10, Ranger Arena

- 520 PtHA - OP Mule Halter, Johns
- 521 PtHA - OP Mule Halter, Mollies
- 522 PtHA - OP Donkey Halter, Jennets
- 523 PtHA - OP Donkey Halter, Geldings/Jacks
- 524 PtHA - OP Mini Jacks & Geldings Halter
- 525 PtHA - OP Mini Jennets Halter
- 526 PtHA - OP Mini Mule John Halter
- 527 PtHA - OP Mini Mule Molly Halter
- 528 Mule Weanling/Yearling Halter Futurity NON-ROM
- 529 Donkey Weanling/Yearling Halter Futurity NON-ROM
- 530 Mule 2 Year Old Halter Futurity NON-ROM
- 531 Donkey 2 year Old Halter Futurity NON-ROM
- 532 PtHA - OP Halter, Utility
- 533 PtHA - OP Color, Utility
- 535 PtHA - AM Mule Western Showmanship
- 536 PHBA - OP Hunter In Hand
- 537 ABRA - OP Hunter In Hand
- 538 PHBA - YA Hunter In Hand
- 539 PHBA - AM Hunter In Hand
- 540 PHBA - YA Showmanship
- 541 PHBA - AM W/T Showmanship
- 542 PHBA - AM Showmanship
- 543 ABRA - YA Western Showmanship 18 & u
- 544 ABRA - YA W/T Western Showmanship 18 & u
- 545 ABRA - AM Western Showmanship
- 546 PHBA - YA Western Horsemanship
- 547 PHBA - AM W/T Western Horsemanship
- 548 PHBA - AM Western Horsemanship
- 549 ABRA - YA Western Horsemanship 18 & u
- 550 ABRA - YA W/T Western Horsemanship 18 & u
- 551 ABRA - AM Western Horsemanship

- 552 PHBA - OP 2 Yr Old Snaffle Bit Western Pleasure (NSBA)
- 553 PHBA - OP Western Pleasure (NSBA)
- 554 ABRA - OP Western Pleasure (NSBA)
- 555 ABRA - BBP OP Western Pleasure
- 556 PHBA - YA Western Pleasure (NSBA)
- 557 PHBA - AM W/T Western Pleasure
- 558 PHBA - AM Western Pleasure (NSBA)
- 559 PHBA - YA Leadline
- 560 ABRA - YA Western Pleasure 18 & under (NSBA)
- 561 ABRA - YA W/T Western Pleasure 18 & under
- 562 ABRA - AM Western Pleasure (NSBA)
- 582 PHBA - AM Hunter Under Saddle (NSBA)
- 583 ABRA - AM Hunter Under Saddle (NSBA)
- 584 PHBA - YA Hunter Under Saddle (NSBA)
- 585 ABRA - YA Hunter Under Saddle 18 & u (NSBA)
- 586 ABRA - YA W/T Hunter Under Saddle 18 & u

After last class - PHBA/ABRA High Points

LEGEND

- PtHA - Pinto Horse Association
- PtHA - Mule/Donkey - Long Ear Registry
- PHBA - Palomino Horse Breeders Association
- ABRA - American Buckskin Registry Association
- NSBA - National Snaffle Bit Association

- ST - Stock Type
- HN - Hunter Type

- OP - Open
- AM - Amateur
- YA - Youth
- W/T - Walk/Trot

After last class - Long Ear High Points

Saturday, November 11 - Ford Truck Arena - 7:30 am

- 563 PtHA - OP Discipl Rail English, HN Seat, ST/HN
- 564 PtHA - AM Jr Disciplined Rail English, ST/HN
- 565 PtHA - AM Sr Disciplined Rail English, ST/HN
- 566 PtHA - AM Elite Disciplined Rail English, ST/HN
- 567 Cash Challenge Hunter Under Saddle Snaf Bit, 3 & 4 yo, Horse
- 568 PtHA - OP Ideal English, HN Seat, ST/HN
- 569 PtHA - AM Jr Ideal Pinto English, ST/HN
- 570 PtHA - AM Sr Ideal Pinto English, ST/HN
- 571 PtHA - AM Elite Ideal Pinto English, ST/HN

After last class - PtHA OP/AM High Points

Saturday, November 11, Mustang Arena - 7:30 am

- 572 PHBA - AM W/T Hunt Seat Equitation
- 573 PHBA - AM Hunt Seat Equitation
- 574 ABRA - AM Hunt Seat Equitation
- 575 PHBA - YA Hunt Seat Equitation
- 576 ABRA - YA Hunt Seat Eq 18 & under
- 577 ABRA - YA W/T Hunt Seat Eq 18 & under
- 578 PHBA - OP Hunter Under Saddle (NSBA)
- 579 ABRA - OP Hunter Under Saddle (NSBA)
- 580 ABRA - BBP OP Hunter Under Saddle
- 581 PHBA- AM W/T Hunter Under Saddle



Classes by Breed and Division

ABRA AMATEUR

- 338 ABRA - AM Trail (NSBA)
- 431 ABRA - AM Halter Mares
- 432 ABRA - AM Halter Performance Mares
- 450 ABRA - AM Halter Geldings
- 451 ABRA - AM Halter Performance Geldings
- 466 ABRA - AM Halter Stallions
- 467 ABRA - AM Halter Performance Stallions
- 477 ABRA - AM Yearling Longe Line (NSBA)
- 545 ABRA - AM Western Showmanship
- 551 ABRA - AM Western Horsemanship
- 562 ABRA - AM Western Pleasure (NSBA)
- 574 ABRA - AM Hunt Seat Equitation
- 583 ABRA - AM Hunter Under Saddle (NSBA)

ABRA AMATEUR RANCH

- 115 ABRA - AM Ranch Trail (NSBA)
- 161 ABRA - AM Ranch Riding (NSBA)
- 231 ABRA - AM Ranch Reining
- 251 ABRA - AM Ranch Rail Pleasure (NSBA)
- 322 ABRA - AM Ranch Conformation

ABRA OPEN

- 335 ABRA - OP Trail (NSBA)
- 427 ABRA - OP Halter 2 & under Mares
- 428 ABRA - OP Halter 3 & over Mares
- 429 ABRA - OP Halter Performance Mares
- 446 ABRA - OP Halter 2 & under Gelding
- 447 ABRA - OP Halter 3 & over Gelding
- 448 ABRA - OP Halter Performance Gelding
- 462 ABRA - OP Halter 2 & under Stallion
- 463 ABRA - OP Halter 3 & over Stallion
- 464 ABRA - OP Halter Performance Stallion
- 471 ABRA - OP Dun Factor
- 475 ABRA - OP Yearling Longe Line (NSBA)
- 537 ABRA - OP Hunter In Hand
- 554 ABRA - OP Western Pleasure (NSBA)
- 579 ABRA - OP Hunter Under Saddle (NSBA)

ABRA OPEN RANCH

- 121 ABRA - OP Ranch Trail (NSBA)
- 164 ABRA - OP Ranch Riding (NSBA)
- 237 ABRA - OP Ranch Reining
- 258 ABRA - OP Ranch Rail Pleasure (NSBA)
- 327 ABRA - OP Ranch Conformation

ABRA OPEN BBP

- 435 ABRA - BBP OP All Age Mares
- 454 ABRA - BBP OP All Age Gelding
- 469 ABRA - BBP OP All Age Stallions
- 555 ABRA - BBP OP Western Pleasure
- 580 ABRA - BBP OP Hunter Under Saddle

ABRA YOUTH

- 334 ABRA - YA Trail 18 & under (NSBA)
- 434 ABRA - YA Halter Mares
- 453 ABRA - YA Halter Geldings
- 543 ABRA - YA Western Showmanship 18 & u
- 549 ABRA - YA Western Horsemanship 18 & u
- 560 ABRA - YA Western Pleasure 18 & under (NSBA)
- 576 ABRA - YA Hunt Seat Eq 18 & under
- 585 ABRA - YA Hunter Under Saddle 18 & u (NSBA)

ABRA YOUTH RANCH

- 110 ABRA - YA Ranch Trail (NSBA)
- 155 ABRA - YA Ranch Riding (NSBA)
- 226 ABRA - YA Ranch Reining
- 243 ABRA - YA Ranch Rail Pleasure (NSBA)
- 317 ABRA - YA 18 & u, Ranch Conformation

ABRA YOUTH WALK/TROT, 18 & under

- 331 ABRA - YA W/T, 18 & U Trail
- 544 ABRA - YA W/T Western Showmanship 18 & u
- 550 ABRA - YA W/T Western Horsemanship 18 & u
- 561 ABRA - YA W/T Western Pleasure 18 & under
- 577 ABRA - YA W/T Hunt Seat Eq 18 & under
- 586 ABRA - YA W/T Hunter Under Saddle 18 & u

PHBA AMATEUR

- 337 PHBA - AM Trail (NSBA)
- 421 PHBA - AM Halter Mares
- 422 PHBA - AM Performance Halter Mares
- 440 PHBA - AM Halter Geldings
- 441 PHBA - AM Performance Halter Geldings
- 459 PHBA - AM Halter Stallions
- 460 PHBA - AM Halter Performance Stallions
- 473 PHBA - AM Color
- 476 PHBA - AM Yearling Longe Line (NSBA)
- 539 PHBA - AM Hunter In Hand
- 542 PHBA - AM Showmanship
- 548 PHBA - AM Western Horsemanship
- 558 PHBA - AM Western Pleasure (NSBA)
- 573 PHBA - AM Hunt Seat Equitation
- 582 PHBA - AM Hunter Under Saddle (NSBA)

PHBA AMATEUR RANCH

- 114 PHBA - AM Ranch Trail (NSBA)
- 160 PHBA - AM Ranch Riding (NSBA)
- 230 PHBA - AM Ranch Reining
- 250 PHBA - AM Ranch Rail Pleasure (NSBA)
- 321 PHBA - AM Ranch Conformation

PHBA AMATEUR WALK/TROT

- 332 PHBA - AM W/T Trail
- 541 PHBA - AM W/T Showmanship

547 PHBA - AM W/T Western Horsemanship
 557 PHBA - AM W/T Western Pleasure
 572 PHBA - AM W/T Hunt Seat Equitation
 581 PHBA - AM W/T Hunter Under Saddle

PHBA OPEN

336 PHBA - OP Trail (NSBA)
 417 PHBA - OP 2 & u Halter Mares
 418 PHBA - OP 3 & o Halter Mares
 419 PHBA - OP Halter Performance Mares
 436 PHBA - OP 2 & u Halter Geldings
 437 PHBA - OP 3 & o Halter Geldings
 438 PHBA - OP Halter Performance Geldings
 455 PHBA - OP 2 & u Halter Stallions
 456 PHBA - OP 3 & o Halter Stallions
 457 PHBA - OP Halter Performance Stallions
 470 PHBA - OP Color - all ages
 474 PHBA - OP Yearling Longe Line (NSBA)
 536 PHBA - OP Hunter In Hand
 552 PHBA - OP 2 Yr Old Snaffle Bit Western Pleasure (NSBA)
 553 PHBA - OP Western Pleasure (NSBA)
 578 PHBA - OP Hunter Under Saddle (NSBA)

PHBA OPEN RANCH

120 PHBA - OP Ranch Trail (NSBA)
 163 PHBA - OP Ranch Riding (NSBA)
 236 PHBA - OP Ranch Reining
 257 PHBA - OP Ranch Rail Pleasure (NSBA)
 326 PHBA - OP Ranch Conformation

PHBA YOUTH

333 PHBA - YA Trail (NSBA)
 424 PHBA - YA Halter Mares, All ages
 425 PHBA - YA Halter Performance Mares
 443 PHBA - YA Halter Geldings, All ages
 444 PHBA - YA Halter Performance Geldings
 472 PHBA - YA Color
 538 PHBA - YA Hunter In Hand
 540 PHBA - YA Showmanship
 546 PHBA - YA Western Horsemanship
 556 PHBA - YA Western Pleasure (NSBA)
 559 PHBA - YA Leadline
 575 PHBA - YA Hunt Seat Equitation
 584 PHBA - YA Hunter Under Saddle (NSBA)

PHBA YOUTH RANCH

109 PHBA - YA Ranch Trail (NSBA)
 154 PHBA - YA Ranch Riding (NSBA)
 225 PHBA - YA Ranch Reining
 242 PHBA - YA Ranch Rail Pleasure (NSBA)
 316 PHBA - YA Ranch Conformation

PtHA AMATEUR

1 PtHA - AM Jr Western Showmanship , ST/HN

2 PtHA - AM Sr Western Showmanship, ST/HN
 3 PtHA - AM Elite Western Showmanship , ST/HN
 8 PtHA - AM Bareback Western Horsemanship, ST/HN
 11 PtHA - AM Jr Western Horsemanship, ST/HN
 12 PtHA - AM Sr Western Horsemanship, ST/HN
 13 PtHA - AM Elite Western Horsemanship, ST/HN
 29 PtHA - AM Western Riding, ST/HN
 46 PtHA - AM Jr Western Pleasure, ST/HN (NSBA)
 47 PtHA - AM Sr Western Pleasure, ST/HN (NSBA)
 48 PtHA - AM Elite Western Pleasure, ST/HN (NSBA)
 53 PtHA - AM Jr Disciplined Rail Western, ST/HN
 54 PtHA - AM Sr Disciplined Rail Western, ST/HN
 55 PtHA - AM Elite Disciplined Rail Western, ST/HN
 59 PtHA - AM Jr Ideal Pinto Western, ST/HN
 60 PtHA - AM Sr Ideal Pinto Western, ST/HN
 61 PtHA - AM Elite Ideal Pinto Western, ST/HN
 136 PtHA - AM Halter Mares, ST/HN, 2 & under
 137 PtHA - AM Halter Mares, ST/HN, 3 & over
 138 PtHA - AM Performance Halter Mares, ST/HN
 139 PtHA - AM Yearling Longe Line, Hunter Type (NSBA)
 140 PtHA - AM Two Year Old Longe Line, ST/HN Type, (NSBA)
 141 PtHA - AM Halter Geldings, ST/HN, 2 & under
 142 PtHA - AM Halter Geldings, ST/HN, 3 & over
 143 PtHA - AM Halter Stallions, ST/HN, 2 & under
 144 PtHA - AM Halter Stallions, ST/HN, 3 & over
 145 PtHA - AM Performance Halter Stallion/Geldings, ST/HN
 146 PtHA - AM Yearling Longe Line, Stock Type (NSBA)
 189 PtHA - AM Tobiano Color, ST/HN
 190 PtHA - AM Overo Color, ST/HN
 262 PtHA - AM Two Yr Old In Hand Trail, ST/HN
 271 PtHA - AM Jr Trail, ST/HN (NSBA)
 272 PtHA - AM Sr Trail, ST/HN (NSBA)
 273 PtHA - AM Elite Trail, ST/HN (NSBA)
 343 PtHA - AM Yearling In Hand Trail, ST/HN
 379 PtHA - AM Jr English Showmanship, ST/HN
 380 PtHA - AM Sr English Showmanship, ST/HN
 381 PtHA - AM Elite - English Showmanship, ST/HN
 486 PtHA - AM Jr Hunter Under Saddle, ST/HN (NSBA)
 487 PtHA - AM Sr Hunter Under Saddle , ST/HN (NSBA)
 488 PtHA - AM Elite Hunter Under Saddle, ST/HN (NSBA)
 495 PtHA - AM Bareback Hunt Seat Equitation, ST/HN
 506 PtHA - AM Jr Hunt Seat Equitation, ST/HN
 507 PtHA - AM Sr Hunt Seat Equitation, ST/HN
 508 PtHA - AM Elite Hunt Seat Equitation, ST/HN
 564 PtHA - AM Jr Disciplined Rail English, ST/HN
 565 PtHA - AM Sr Disciplined Rail English, ST/HN
 566 PtHA - AM Elite Disciplined Rail English, ST/HN
 569 PtHA - AM Jr Ideal Pinto English, ST/HN
 570 PtHA - AM Sr Ideal Pinto English, ST/HN
 571 PtHA - AM Elite Ideal Pinto English, ST/HN

PtHA AMATEUR RANCH

112 PtHA - AM Ranch Trail, ST/HN (NSBA)
 158 PtHA - AM Ranch Riding, ST/HN (NSBA)
 228 PtHA - AM Ranch Reining, ST/HN
 248 PtHA - AM Ranch Rail Pleasure, ST/HN (NSBA)
 297 PtHA - AM Ranch Horsemanship, ST/HN
 305 PtHA - AM Ranch Ideal, ST/HN
 313 PtHA - AM Ranch Showmanship, ST/HN
 323 PtHA - AM Ranch Conformation, ST/HN

PtHA AMATEUR, SOLID

- 28 PtHA - AM Western Riding, ST/HN, Solid
- 31 PtHA - AM Western Showmanship, ST/HN, Solid
- 35 PtHA - AM Bareback Western Horsemanship, ST/HN, Solid
- 40 PtHA - AM Western Horsemanship, ST/HN, Solid
- 44 PtHA - AM Western Pleasure, ST/HN, Solid (NSBA)
- 75 PtHA - AM Discipline Rail Western, ST/HN, Solid
- 78 PtHA - AM Ideal Pinto Western, ST/HN, Solid
- 176 PtHA - AM Halter Mares, ST/HN, Solid
- 177 PtHA - AM Performance Halter Mares, ST/HN, Solid
- 178 PtHA - AM Yearling Longe Line, Hunter Type, Solid (NSBA)
- 179 PtHA - AM Two Year Old Longe Line, ST/HN Type, Solid (NSBA)
- 180 PtHA - AM Halter Stallion/Geldings, ST/HN, Solid
- 181 PtHA - AM Performance Halter Stallion/Geldings, ST/HN, Solid
- 182 PtHA - AM Yearling Longe Line, Stock Type, Solid (NSBA)
- 264 PtHA - AM Two Yr Old In Hand Trail, ST/HN, Solid
- 274 PtHA - AM Trail, ST/HN, Solid (NSBA)
- 342 PtHA - AM Yearling In Hand Trail, ST/HN, Solid
- 364 PtHA - AM Discipline Rail English, ST/HN, Solid
- 382 PtHA - AM English Showmanship, ST/HN, Solid
- 478 PtHA - AM Bareback Hunt Seat Equitation, ST/HN, Solid
- 481 PtHA - AM Hunter Under Saddle, ST/HN, Solid (NSBA)
- 483 PtHA - AM Hunt Seat Equitation, ST/HN, Solid
- 494 PtHA - AM Ideal Pinto English, ST/HN Solid

PtHA AMATEUR RANCH, SOLID

- 113 PtHA - AM Ranch Trail, ST/HN, Solid (NSBA)
- 159 PtHA - AM Ranch Riding, ST/HN, Solid (NSBA)
- 229 PtHA - AM Ranch Reining, ST/HN, Solid
- 249 PtHA - AM Ranch Rail Pleasure, ST/HN, Solid (NSBA)
- 298 PtHA - AM Ranch Horsemanship, ST/HN Solid
- 306 PtHA - AM Ranch Ideal, ST/HN Solid
- 314 PtHA - AM Ranch Showmanship, ST/HN Solid
- 324 PtHA - AM Ranch Conformation, ST/HN, Solid

PtHA AMATEUR NOVICE

- 4 PtHA - AM Novice Western Showmanship, ST/HN
- 9 PtHA - AM Novice Western Horsemanship, ST/HN
- 43 PtHA - AM Novice Western Pleasure, ST/HN
- 270 PtHA - AM Novice Trail, ST/HN
- 388 PtHA - AM Novice Hunter Under Saddle, ST/HN
- 500 PtHA - AM Novice Hunt Seat Equitation, ST/HN

PtHA AMATEUR JUNIOR WALK/TROT

- 5 PtHA - AM Jr W/T Western Showmanship, ST/HN
- 42 PtHA - AM Jr W/T Western Horsemanship, ST/HN
- 56 PtHA - AM Jr W/T Ideal Pinto Western, ST/HN
- 63 PtHA - AM Jr W/T Western Pleasure, ST/HN
- 89 PtHA - AM Jr W/T Disciplined Rail Western, ST/HN
- 265 PtHA - AM Jr W/T Trail, ST/HN
- 383 PtHA - AM Jr W/T English Showmanship, ST/HN
- 390 PtHA - AM Jr W/T Ideal Pinto English, ST/HN
- 490 PtHA - AM Jr W/T Disciplined Rail English, ST/HN
- 496 PtHA - AM Jr W/T Hunter Under Saddle, ST/HN
- 501 PtHA - AM Jr W/T Hunt Seat Equitation, ST/HN

PtHA AMATEUR SENIOR WALK/TROT

- 6 PtHA - AM Sr W/T Western Showmanship, ST/HN
- 14 PtHA - AM Sr W/T Western Horsemanship, ST/HN
- 57 PtHA - AM Sr W/T Ideal Pinto Western, ST/HN
- 64 PtHA - AM Sr W/T Western Pleasure, ST/HN
- 90 PtHA - AM Sr W/T Disciplined Rail Western, ST/HN
- 266 PtHA - AM Sr W/T Trail, ST/HN
- 384 PtHA - AM Sr W/T English Showmanship, ST/HN
- 391 PtHA - AM Sr W/T Ideal Pinto English, ST/HN
- 491 PtHA - AM Sr W/T Disciplined Rail English, ST/HN
- 497 PtHA - AM Sr W/T Hunter Under Saddle, ST/HN
- 502 PtHA - AM Sr W/T Hunt Seat Equitation, ST/HN

PtHA AMATEUR ELITE WALK/TROT

- 7 PtHA - AM El W/T Western Showmanship, ST/HN
- 15 PtHA - AM El W/T Western Horsemanship, ST/HN
- 58 PtHA - AM El W/T Ideal Pinto Western, ST/HN
- 65 PtHA - AM El W/T Western Pleasure, ST/HN
- 91 PtHA - AM El W/T Disciplined Rail Western, ST/HN
- 267 PtHA - AM El W/T Trail, ST/HN
- 385 PtHA - AM El W/T English Showmanship, ST/HN
- 392 PtHA - AM El W/T Ideal Pinto English, ST/HN
- 492 PtHA - AM El W/T Disciplined Rail English, ST/HN
- 498 PtHA - AM El W/T Hunter Under Saddle, ST/HN
- 503 PtHA - AM El W/T Hunt Seat Equitation, ST/HN

PtHA AMATEUR WALK/TROT, SOLID

- 30 PtHA - AM W/T Western Showmanship, ST/HN, Solid
- 41 PtHA - AM W/T Western Horsemanship, ST/HN, Solid
- 66 PtHA - AM W/T Western Pleasure, ST/HN, Solid
- 268 PtHA - AM W/T Trail, ST/HN, Solid
- 366 PtHA - AM W/T Hunter Under Saddle, ST/HN, Solid
- 386 PtHA - AM W/T English Showmanship, ST/HN, Solid
- 482 PtHA - AM W/T Hunt Seat Equitation, ST/HN, Solid

PtHA OPEN

- 45 PtHA - OP West Pl, ST/HN , 5 & U (NSBA)
- 86 PtHA - OP West Pleas, 2 yo Sn Bit, ST/HN, (NSBA)
- 87 PtHA - OP West Pl, ST/HN , 6 & O (NSBA)
- 102 PtHA - OP Western Riding, ST/HN (NSBA)
- 122 PtHA - OP Green Western Pleasure, ST/HN
- 126 PtHA - OP Ideal Pinto Western, ST/HN
- 128 PtHA - OP Disciplined Rail Western, ST/HN
- 193 PtHA - OP Yearling Longe Line, Hunter Type (NSBA)
- 194 PtHA - OP Halter Mares, ST/HN, Weanlings
- 195 PtHA - OP Halter Mares, ST/HN, Yearlings
- 196 PtHA - OP Halter Mares, ST/HN, 2 Yr Old
- 197 PtHA - OP Halter Mares, ST/HN, 3 Yr Old
- 198 PtHA - OP Halter Mares, ST/HN, 4 Yr Old
- 199 PtHA - OP Halter Mares, ST/HN, 5 & Older
- 200 PtHA - OP Performance Halter Mares, ST/HN
- 202 PtHA - OP Yearling Longe Line, Stock Type (NSBA)
- 203 PtHA - OP Halter Geldings, ST/HN, Weanlings
- 204 PtHA - OP Halter Geldings, ST/HN, Yearlings
- 205 PtHA - OP Halter Geldings, ST/HN, 2 Yr Old
- 206 PtHA - OP Halter Geldings, ST/HN, 3 Yr Old
- 207 PtHA - OP Halter Geldings, ST/HN, 4 Yr Old

- 208 PtHA - OP Halter Geldings, ST/HN, 5 & Older
- 209 PtHA - OP Performance Halter Geldings, ST/HN
- 214 PtHA - OP Halter Stallions, ST/HN, Weanling
- 215 PtHA - OP Halter Stallions, ST/HN, Yearling
- 216 PtHA - OP Halter Stallions, ST/HN, 2 Yr Old
- 217 PtHA - OP Halter Stallions, ST/HN, 3 Yr Old
- 218 PtHA - OP Halter Stallions, ST/HN, 4 Yr Old
- 219 PtHA - OP Halter Stallions, ST/HN, 5 & Older
- 220 PtHA - OP Performance Halter Stallions, ST/HN
- 261 PtHA - OP Two Yr Old In Hand Trail, ST/HN
- 269 PtHA - OP Green Trail, ST/HN
- 275 PtHA - OP Trail, 5 & Under, ST/HN (NSBA)
- 277 PtHA - OP Trail, 6 & Older, ST/HN (NSBA)
- 279 PtHA - OP Tobiano Color, ST/HN
- 280 PtHA - OP Overo Color, ST/HN
- 282 PtHA - OP Two Year Old Longe Line, ST/HN Type (NSBA)
- 341 PtHA - OP Yearling In Hand Trail, ST/HN
- 387 PtHA - OP Hunt U Saddle, 6 & O, ST/HN (NSBA)
- 389 PtHA - OP Hunt U Saddle, 5 & U, ST/HN (NSBA)
- 484 PtHA - OP Green Hunt U Saddle, ST/HN
- 499 PtHA - OP Hunt U Saddle, 2 YO Snaf Bit, ST/HN, (NSBA)
- 563 PtHA - OP Discipl Rail English, HN Seat, ST/HN
- 568 PtHA - OP Ideal English, HN Seat, ST/HN

PtHA OPEN RANCH

- 117 PtHA - OP Ranch Trail, ST/HN (NSBA)
- 165 PtHA - OP Ranch Riding, ST/HN (NSBA)
- 233 PtHA - OP Ranch Reining, ST/HN
- 254 PtHA - OP Ranch Rail Pleasure, ST/HN (NSBA)
- 308 PtHA - OP Ranch Ideal, ST/HN
- 328 PtHA - OP Ranch Conformation, ST/HN

PtHA OPEN, SOLID

- 49 PtHA - OP Western Pleasure, ST/HN, Solid (NSBA)
- 62 PtHA - OP Western Pleasure, 2 yo Sn Bit, ST/HN, Solid (NSBA)
- 80 PtHA - OP Ideal Pinto Western, ST/HN, Solid
- 103 PtHA - OP Western Riding, ST/HN, Solid (NSBA)
- 129 PtHA - OP Discipline Rail Western, ST/HN, Solid
- 130 PtHA - OP Halter Stall/Geld, ST/HN, Solid, Weanlings
- 131 PtHA - OP Halter Stall/Geld, ST/HN, Solid, Yearlings
- 132 PtHA - OP Halter Stall/Geld, ST/HN, Solid, 2 & 3 Yr Old
- 133 PtHA - OP Halter Stall/Geld, ST/HN, Solid, 4 & Older
- 134 PtHA - OP Performance Halter Stall/Geldings, ST/HN, Solid
- 183 PtHA - OP Halter Mares, ST/HN, Solid, Weanlings
- 184 PtHA - OP Halter Mares, ST/HN, Solid, Yearlings
- 185 PtHA - OP Halter Mares, ST/HN, Solid, 2 & 3 Yr Old
- 186 PtHA - OP Halter Mares, ST/HN, Solid, 4 & Older
- 187 PtHA - OP Performance Halter Mares, ST/HN, Solid
- 191 PtHA - OP Yearling Longe Line, Stock Type, Solid (NSBA)
- 192 PtHA - OP Yearling Longe Line, Hunter Type, Solid (NSBA)
- 211 PtHA - OP Two Year Old Longe Line, ST/HN Type, Solid (NSBA)
- 263 PtHA - OP Two Yr Old In Hand Trail, ST/HN, Solid
- 276 PtHA - OP Trail, ST/HN, Solid (NSBA)

- 340 PtHA - OP Yearling In Hand Trail, ST/HN, Solid
- 365 PtHA - OP Discipline Rail English, ST/HN, Solid
- 480 PtHA - OP Hunter Under Saddle, ST/HN, Solid (NSBA)
- 489 PtHA - OP Hunt U Saddle, 2 YO Snaf Bit, ST/HN Solid, (NSBA)
- 493 PtHA - OP Ideal English, HN Seat, ST/HN, Solid

PtHA OPEN RANCH, SOLID

- 118 PtHA - OP Ranch Trail, ST/HN, Solid (NSBA)
- 166 PtHA - OP Ranch Riding, ST/HN, Solid (NSBA)
- 234 PtHA - OP Ranch Reining, ST/HN, Solid
- 255 PtHA - OP Ranch Rail Pleasure, ST/HN, Solid (NSBA)
- 309 PtHA - OP Ranch Ideal, ST/HN, Solid
- 329 PtHA - OP Ranch Conformation, ST/HN, Solid

PtHA YOUTH

- 17 PtHA - YA Jr Western Showmanship, ST/HN
- 18 PtHA - YA Sr Western Showmanship, ST/HN
- 21 PtHA - YA Jr Bareback Western Horsemanship, ST/HN
- 22 PtHA - YA Sr Bareback Western Horsemanship, ST/HN
- 24 PtHA - YA Jr Western Horsemanship, ST/HN
- 25 PtHA - YA Sr Western Horsemanship, ST/HN
- 27 PtHA - YA Western Riding, ST/HN
- 68 PtHA - YA Jr Western Pleasure, ST/HN (NSBA)
- 69 PtHA - YA Sr Western Pleasure, ST/HN (NSBA)
- 71 PtHA - YA Leadline, 8 & u, Western Pleasure
- 72 PtHA - YA Jr Disciplined Rail Western, ST/HN
- 73 PtHA - YA Sr Disciplined Rail Western, ST/HN
- 76 PtHA - YA Jr Ideal Pinto Western, ST/HN
- 77 PtHA - YA Sr Ideal Pinto Western, ST/HN
- 92 PtHA - YA Halter Mares, ST/HN
- 94 PtHA - YA Performance Halter Mares, ST/HN
- 96 PtHA - YA Halter Geldings, ST/HN
- 98 PtHA - YA Performance Halter Geldings, ST/HN
- 100 PtHA - YA Tobiano Color, ST/HN
- 101 PtHA - YA Overo Color, ST/HN
- 173 PtHA - YA Jr Trail, ST/HN (NSBA)
- 174 PtHA - YA Sr Trail, ST/HN (NSBA)
- 288 PtHA - YA Jr Bareback Hunt Seat Equitation, ST/HN
- 289 PtHA - YA Sr Bareback Hunt Seat Equitation, ST/HN
- 291 PtHA - YA Jr Hunt Seat Equitation, ST/HN
- 292 PtHA - YA Sr Hunt Seat Equitation, ST/HN
- 357 PtHA - YA Jr English Showmanship, ST/HN
- 358 PtHA - YA Sr English Showmanship, ST/HN
- 360 PtHA - YA Jr Disciplined Rail English, ST/HN
- 361 PtHA - YA Sr Disciplined Rail English, ST/HN
- 373 PtHA - YA Jr Hunter Under Saddle, ST/HN (NSBA)
- 374 PtHA - YA Sr Hunter Under Saddle, ST/HN (NSBA)
- 376 PtHA - YA Jr Ideal Pinto English, ST/HN
- 377 PtHA - YA Sr Ideal Pinto English, ST/HN

PtHA YOUTH RANCH

- 107 PtHA - YA Ranch Trail, ST/HN (NSBA)
- 152 PtHA - YA Ranch Riding, ST/HN (NSBA)
- 223 PtHA - YA Ranch Reining, ST/HN
- 240 PtHA - YA Ranch Rail Pleasure, ST/HN (NSBA)
- 295 PtHA - YA Ranch Horsemanship, ST/HN
- 301 PtHA - YA Ranch Ideal, ST/HN
- 311 PtHA - YA Ranch Showmanship, ST/HN
- 318 PtHA - YA Ranch Conformation, ST/HN

PtHA YOUTH, SOLID

26	PtHA - YA Western Horsemanship, ST/HN, Solid
32	PtHA - YA Western Showmanship, ST/HN, Solid
67	PtHA - YA Western Pleasure, ST/HN, Solid (NSBA)
70	PtHA - YA Leadline 8 & u, Western Pleasure, Solid
74	PtHA - YA Discipline Rail Western, ST/HN, Solid
79	PtHA - YA Ideal Pinto Western, ST/HN, Solid
93	PtHA - YA Halter Mares, ST/HN, Solid
95	PtHA - YA Performance Halter Mares, ST/HN, Solid
97	PtHA - YA Halter Geldings, ST/HN, Solid
99	PtHA - YA Performance Halter Geldings, ST/HN, Solid
175	PtHA - YA Trail, ST/HN, Solid (NSBA)
290	PtHA - YA Hunt Seat Equitation, ST/HN, Solid
359	PtHA - YA English Showmanship, ST/HN, Solid
362	PtHA - YA Discipline Rail English, ST/HN, Solid
375	PtHA - YA Hunter Under Saddle, ST/HN, Solid (NSBA)
378	PtHA - YA Ideal Pinto English, ST/HN, Solid

PtHA YOUTH RANCH, SOLID

108	PtHA - YA Ranch Trail, ST/HN, Solid (NSBA)
153	PtHA - YA Ranch Riding, ST/HN, Solid (NSBA)
224	PtHA - YA Ranch Reining, ST/HN, Solid
241	PtHA - YA Ranch Rail Pleasure, ST/HN, Solid (NSBA)
296	PtHA - YA Ranch Horsemanship, ST/HN Solid
302	PtHA - YA Ranch Ideal, ST/HN, Solid
312	PtHA - YA Ranch Showmanship, ST/HN Solid
319	PtHA - YA Ranch Conformation, ST/HN, Solid

PtHA YOUTH NOVICE

16	PtHA - YA Novice Western Showmanship, ST/HN
23	PtHA - YA Novice Western Horsemanship, ST/HN
85	PtHA - YA Novice Western Pleasure, ST/HN
172	PtHA - YA Novice Trail, ST/HN
293	PtHA - YA Novice Hunt Seat Equitation, ST/HN
368	PtHA - YA Novice Hunter Under Saddle, ST/HN

PtHA YOUTH WALK/TROT 11 - 18

20	PtHA - YA W/T, 11 -18 Western Showmanship, ST/HN
38	PtHA - YA W/T, 11-18 Western Horsemanship, ST/HN
84	PtHA - YA W/T, 11-18 Western Pleasure, ST/HN
170	PtHA - YA W/T, 11-18 Trail, ST/HN
284	PtHA - YA W/T, 11-18 Hunt Seat Equitation, ST/HN
372	PtHA - YA W/T, 11-18 Hunter Under Saddle, ST/HN

PtHA YOUTH WALK/TROT 11 - 18, SOLID

34	PtHA - YA W/T, 11-18 Western Showmanship, ST/HN, Solid
39	PtHA - YA W/T, 11-18 Western Horsemanship, ST/HN, Solid
83	PtHA - YA W/T, 11-18 Western Pleasure, ST/HN, Solid
171	PtHA - YA W/T, 11 -18 Trail, ST/HN, Solid
286	PtHA - YA W/T, 11-18 Hunt Seat Equitation, ST/HN, Solid
370	PtHA - YA W/T, 11-18 Hunter Under Saddle, ST/HN, Solid

PtHA YOUTH WALK/TROT 10 & UNDER

19	PtHA - YA W/T, 10 & u Western Showmanship, ST/HN
36	PtHA - YA W/T, 10 & u Western Horsemanship, ST/HN

82	PtHA - YA W/T, 10 & u Western Pleasure, ST/HN
168	PtHA - YA W/T, 10 & u Trail, ST/HN
283	PtHA - YA W/T, 10 & u Hunt Seat Equitation, ST/HN
371	PtHA - YA W/T, 10 & u Hunter Under Saddle, ST/HN

PtHA YOUTH WALK/TROT 10 & UNDER, SOLID

33	PtHA - YA W/T, 10 & u Western Showmanship, ST/HN, Solid
37	PtHA - YA W/T 10 & u Western Horsemanship, ST/HN, Solid
81	PtHA - YA W/T, 10 & u Western Pleasure, ST/HN, Solid
169	PtHA - YA W/T, 10 & u Trail, ST/HN, Solid
285	PtHA - YA W/T, 10 & u Hunt Seat Equitation, ST/HN, Solid
369	PtHA - YA W/T, 10 & u Hunter Under Saddle, ST/HN, Solid

PtHA YOUTH MULE

348	PtHA - YA Mule Western Trail
396	PtHA - YA Mule Barrels
401	PtHA - YA Mule Poles
411	PtHA - YA Mule English Pleasure
416	PtHA - YA Mule English Equitation
512	PtHA - YA Mule Western Pleasure
514	PtHA - YA Leadline Walk Only West Pleas, Donkey/Mules, 8 & u
519	PtHA - YA Mulemanship
534	PtHA - YA Mule Western Showmanship

PtHA AMATEUR MULE

351	PtHA - AM Mule Western Trail
395	PtHA - AM Mule Barrels
400	PtHA - AM Mule Poles
407	PtHA - AM Mule Pleasure Driving
410	PtHA - AM Mule English Pleasure
415	PtHA - AM Mule English Equitation
511	PtHA - AM Mule Western Pleasure
518	PtHA - AM Mulemanship
535	PtHA - AM Mule Western Showmanship

PtHA OPEN MULE

349	PtHA - OP Mule Western Trail
355	PtHA - OP Mule Obstacle Driving
394	PtHA - OP Mule Barrels
399	PtHA - OP Mule Poles
406	PtHA - OP Mule Pleasure Driving
409	PtHA - OP Mule English Pleasure
510	PtHA - OP Mule Western Pleasure
520	PtHA - OP Mule Halter, Johns
521	PtHA - OP Mule Halter, Mollies
PtHA OPEN RANCH, MULE	
119	PtHA - OP Ranch Trail, Mule
162	PtHA - OP Ranch Riding, Mule
235	PtHA - OP Ranch Reining, Mule
256	PtHA - OP Ranch Rail Pleasure, Mule
310	PtHA - OP Ranch Ideal, Mule
330	PtHA - OP Ranch Conformation, Mule

PtHA OPEN DONKEY

350	PtHA - OP Donkey Western Trail
356	PtHA - OP Donkey Obstacle Driving
397	PtHA - OP Donkey Barrels
402	PtHA - OP Donkey Poles
408	PtHA - OP Donkey Pleasure Driving
413	PtHA - OP Donkey English Pleasure
515	PtHA - OP Donkey Western Pleasure
522	PtHA - OP Donkey Halter, Jennets

523 PtHA - OP Donkey Halter, Geldings/Jacks

PtHA OPEN DONKEY TRAINING LEVEL WALK/TROT

- 347 PtHA - OP Donkey Training Level W/T Trail
- 393 PtHA - OP Donkey Training Level W/T Barrels
- 398 PtHA - OP Donkey Training Level W/T Poles
- 412 PtHA - OP Donkey Training Level W/T English Pleasure
- 513 PtHA - OP Donkey Training Level W/T Western Pleasure

PtHA OPEN MINI DONKEY

- 345 PtHA - OP Mini Donkey Western Trail In-Hand
- 353 PtHA - OP Mini Donkey Obstacle Driving
- 404 PtHA - OP Mini Donkey Pleasure Driving
- 516 PtHA - OP Mini Donkey Disciplined Rail Driving
- 524 PtHA - OP Mini Jacks & Geldings Halter
- 525 PtHA - OP Mini Jennets Halter

PtHA OPEN MINI MULE

- 346 PtHA - OP Mini Mule Western Trail In-Hand
- 354 PtHA - OP Mini Mule Obstacle Driving
- 405 PtHA - OP Mini Mule Pleasure Driving
- 517 PtHA - OP Mini Mule Disciplined Rail Driving
- 526 PtHA - OP Mini Mule John Halter
- 527 PtHA - OP Mini Mule Molly Halter

PtHA OPEN UTILITY

- 352 PtHA - OP Western Trail, Utility
- 403 PtHA - OP Pleasure Driving, Utility
- 414 PtHA - OP English Pleasure, Utility
- 509 PtHA - OP Western Pleasure, Utility
- 532 PtHA - OP Halter, Utility
- 533 PtHA - OP Color, Utility

ALL BREED AMATEUR RANCH

- 111 All Breed - AM Ranch Trail
- 157 All Breed - AM Ranch Riding
- 227 All Breed - AM Ranch Reining
- 246 All Breed - AM Ranch Rail Pleasure
- 304 All Breed - AM Ranch Ideal
- 320 All Breed - AM Ranch Conformation

ALL BREED AMATEUR W/T RANCH

- 105 All Breed - AM W/T Ranch Trail
- 156 All Breed - AM W/T Ranch Riding
- 245 All Breed - AM W/T Ranch Rail Pleasure
- 303 All Breed - AM W/T Ranch Ideal

ALL BREED OPEN RANCH

- 116 All Breed - OP Ranch Trail
- 167 All Breed - OP Ranch Riding
- 232 All Breed - OP Ranch Reining
- 253 All Breed - OP Ranch Rail Pleasure
- 307 All Breed - OP Ranch Ideal
- 325 All Breed - OP Ranch Conformation

ALL BREED YOUTH RANCH

- 106 All Breed - YA Ranch Trail
- 151 All Breed - YA Ranch Riding
- 222 All Breed - YA Ranch Reining
- 239 All Breed - YA Ranch Rail Pleasure

300 All Breed - YA Ranch Ideal

315 All Breed - YA Ranch Conformation

ALL BREED YOUTH W/T RANCH

- 104 All Breed - YA W/T Ranch Trail
- 150 All Breed - YA W/T Ranch Riding
- 238 All Breed - YA W/T Ranch Rail Pleasure
- 299 All Breed - YA W/T Ranch Ideal

CASH CHALLENGE

- 52 Cash Challenge West Pleasure, all ages, all divisions
- 124 Cash Challenge West Pleasure, Snaffle Bit, 2 yo, Horse
- 125 Cash Challenge Western Pleasure Snaf Bit, 3 & 4 yo Horse
- 149 Cash Challenge Ranch Riding, all ages
- 260 Cash Challenge Ranch Rail Pleasure, all ages
- 278 Cash Challenge Yearling Longe Line, Stock Type Horse
- 281 Cash Challenge Yearling Longe Line, Hunter Type Horse
- 339 Cash Challenge Trail - all ages, all divisions
- 479 Cash Challenge Hunter Under Saddle Snaffle Bit, 2 yo, Horse
- 485 Cash Challenge Hunter Under Saddle, all ages, all divisions
- 567 Cash Challenge Hunter Under Saddle Snaf Bit, 3 & 4 yo, Horse

CASH FOR COLOR FUTURITY

- 10 Cash for Color Non Pro Western Pleasure, W/T (NSBA Color)
- 50 Cash for Color Open Western Pleasure, 3 yr olds (NSBA Color)
- 51 Cash for Color Open Western Pleasure, 2 yr olds (NSBA Color)
- 88 Cash for Color Non Pro Western Pleasure, 5 & u (NSBA Color)
- 123 Cash for Color Non Pro Western Pleasure, 6 & over (NSBA Color)
- 127 Cash for Color Non Pro Western Pleasure, 3 yr olds (NSBA Color)
- 147 Cash for Color Non Pro Longe Line - Western (NSBA Color)
- 148 Cash for Color Non Pro Longe Line - Hunter (NSBA Color)
- 212 Cash for Color Open Longe Line - Western (NSBA Color)
- 213 Cash for Color Open Longe Line - Hunter (NSBA Color)
- 244 Cash for Color Non Pro Ranch Rail, 5 & under (NSBA Color)
- 247 Cash for Color Open Ranch Rail, 3 yr olds (NSBA Color)
- 252 Cash for Color Non Pro Ranch Rail, 3 yr olds (NSBA Color)
- 259 Cash for Color Non Pro Ranch Rail, 6 & over (NSBA Color)
- 287 Cash for Color Open Hunter Under Saddle, 2 yr olds (NSBA Color)
- 294 Cash for Color Open Hunter Under Saddle, 3 yr olds (NSBA Color)
- 344 Cash for Color Non Pro Yearling In Hand Trail (NSBA Color)
- 363 Cash for Color Non Pro Hunter Under Saddle, 3 yo (NSBA Color)
- 367 Cash for Color Non Pro Hunter Under Saddle, W/T (NSBA Color)
- 504 Cash for Color Non Pro Hunter Under Saddle, 6 & o (NSBA Color)
- 505 Cash for Color Non Pro Hunter Under Saddle, 5 & u (NSBA Color)

LONG EAR HALTER FUTURITY

- 528 Mule Weanling/Yearling Halter Futurity NON-ROM
- 529 Donkey Weanling/Yearling Halter Futurity NON-ROM
- 530 Mule 2 Year Old Halter Futurity NON-ROM
- 531 Donkey 2 year Old Halter Futurity NON-ROM

COLORED HORSE ASSOCIATION®
PRE-ENTRY DEADLINE:
OCTOBER 5TH

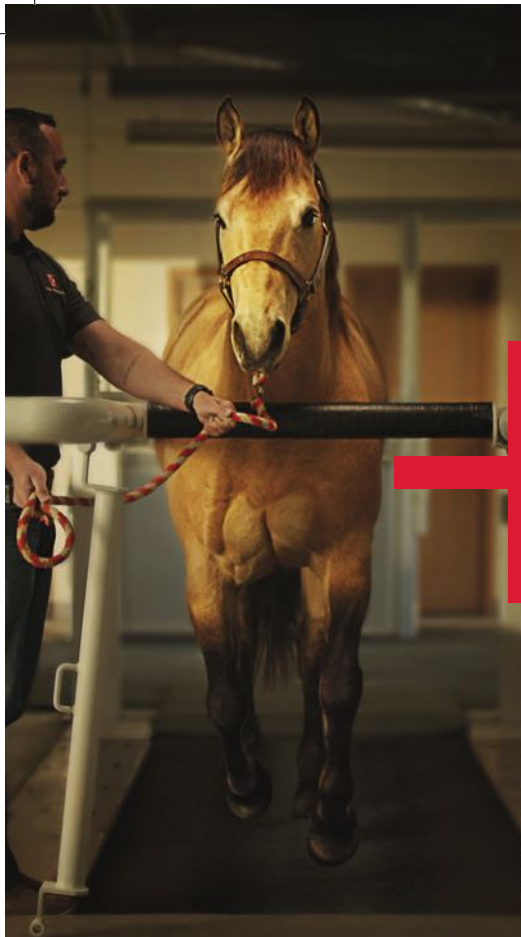
COLOR BREED CONGRESS
// COLOR BREED CONGRESS.COM



Here's what Joseph Harrison,
3X NFR qualifier,
3X AQHA World Champion,
2X ARHEA Heeling Futurity World Champion,
2019 ARHEA Heeling Futurity Reserve World
Champion and
RFD-TV's The American 2020 Champion Heeler
has to say about Arena Werks, "For
all horses, especially heel horses, the
ground is very important. You want
to keep your arena footing in the
best possible condition, that's why I
use Arena Werks."

ArenaWerks.com
The Ultimate Rotary Harrow
(800) 644-3724 or arenawerksinfo@facebook.net

Proverbs 16:3



Science + Love. Helping Horses Thrive.

Our Purina PhD Nutritionists tackle problems using science. And our love of horses keeps us at it until we get it right. Even with our most established feeds, we keep innovating. Even when it takes years of research, we don't stop until it's right. We're dedicated to the scientific method, but it can't capture the feeling of seeing a horse reach their full potential. It takes science and love to help your horse live their best life.

Put our research to the test at HorseInnovation.com



FEED GREATNESS®

© 2021 Purina Animal Nutrition LLC. All rights reserved.

Purina Science+Love Ad_8.5x11.indd 1

7/2/21 9:33 AM

Free coffee and donuts every morning at the hospitality booth in the Ford Dealer Barn.



What did you think?

Fill out a suggestion form at the show office to let us know what you liked or what you would like to see done differently next year. We love your feedback!

2023 Color Breed Congress® Premium Book • 57



CASH FOR COLOR

STALLION PROGRAM



CASH FOR COLOR

INFO@CASHFORCOLOR.COM



800-326-2208

www.gchrents.com

Moving you forward



Oklahoma • Texas • Colorado



WELCOME

TO EXPO SQUARE

BEDDING & FEED

**TO ORDER VISIT
BEDDING.EXPOSQUARE.COM**



CALL OR EMAIL

918-728-3299 | BEDDING@EXPOSQUARE.COM

YOU KNOW YOUR BUSINESS WE KNOW HOW TO HELP YOU INSURE IT



With everything you need to accomplish in a day insurance protection for your business might be the last thing on your mind. You do recognize, however, that a one-size-fits-all insurance policy isn't the smart way to run a business. Your operation is unique and we understand that.

Our **AGRIBUSINESS INSURANCE PROGRAM** can provide you with a flexible farm package that allows you to customize a policy to match your individual needs.

Visit our website to find an agent near you.



CARRAH DALEY
Market Manager,
Agribusiness & Equine

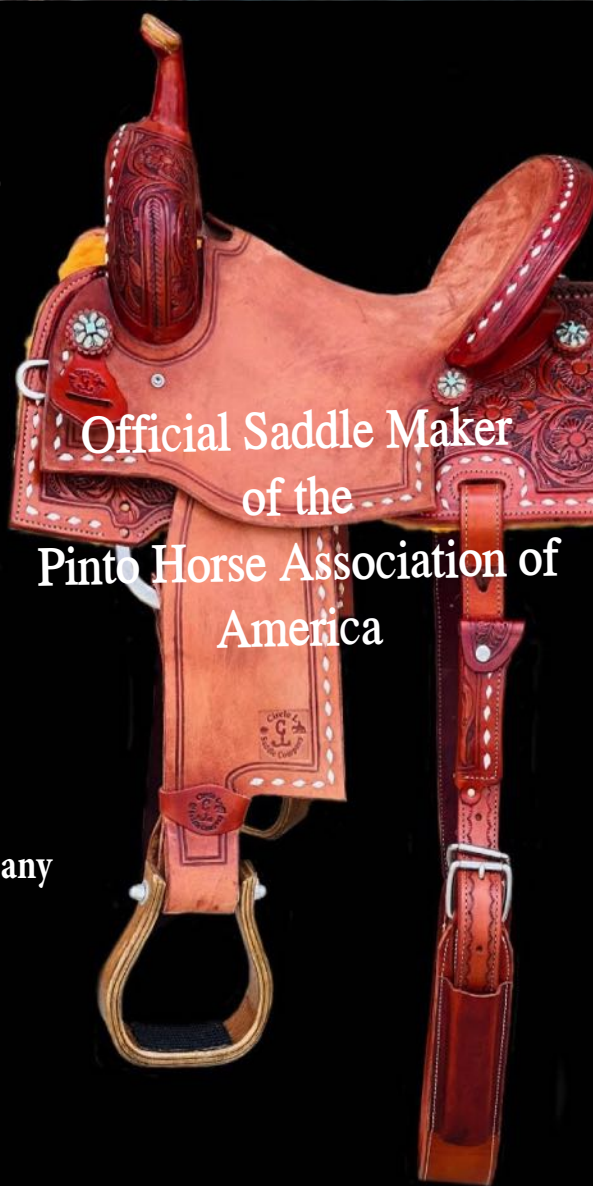
✉ carrah.daley@americannational.com
☎ 518.431.5125

Visit our website at
[Multipleline/AmericanNational.com/Equine/](https://www.Multipleline/AmericanNational.com/Equine/)
to request more information
and to find an agent near you!

Circle L Saddle Company

Handcrafted in the USA

STOP DREAMING...
START RIDING



Official Saddle Maker
of the
Pinto Horse Association of
America



Circle L Saddle Company



Frank Lamprey • 802-683-7335

Save the Date

2023 Pinto World Championship

June 10-22, 2024

Tulsa, Oklahoma





KELLY HERD
FINE JEWELRY SINCE 1983



MUST - HAVE STYLES

Shop the looks we love and never leave home without – from statement-making pieces to everyday essentials and more.



**HORSESHOE
COLLECTION**



**SOUTHWEST
COLLECTION**



**STIRRUP
COLLECTION**



Maxum HA

A powerful combination of Glucosamines, Chondroitin sulfate, MSM, Hyaluronic Acid and Vitamin C. An all-in-one product to aid in mobility and joint support.

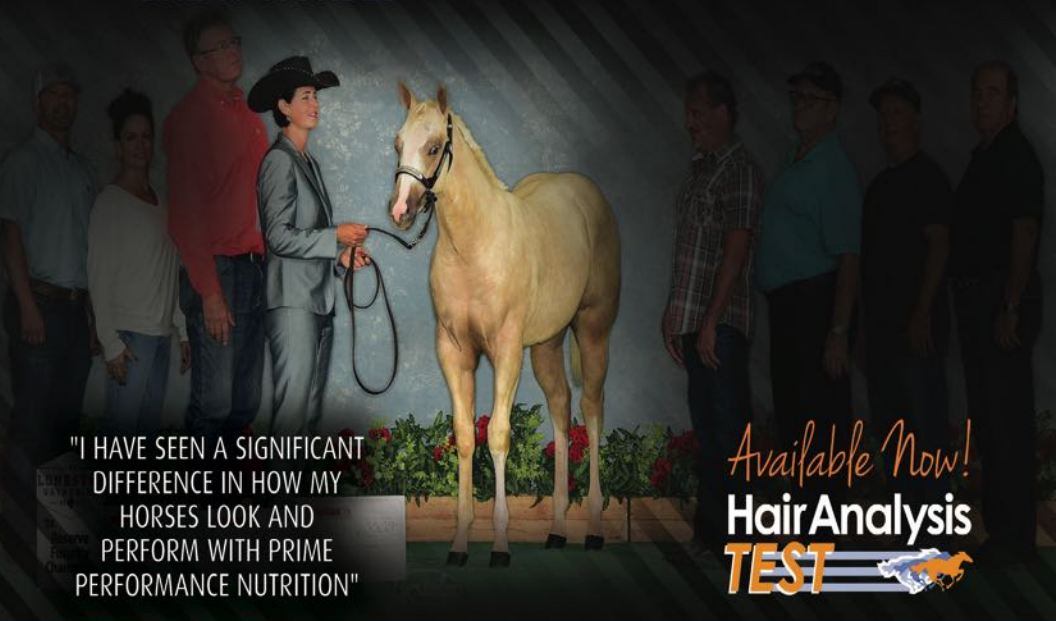


ASSURE GT

Carefully balanced for gastric upset, a biological feed additive for foals and horses in training that display reduced appetite and a reduction in performance.

Steve Cruise SHOW HORSES

APPALOOSAS, PAINTS AND QUARTER HORSES,
SPECIALIZING IN REGIONAL AND WORLD SHOWS IN HALTER.
OVER 100 WORLD CHAMPIONSHIPS INCLUDING OPEN, AMATEUR AND
YOUTH EXHIBITORS. REPRODUCTION AND FOALING FACILITY AS WELL.



"I HAVE SEEN A SIGNIFICANT
DIFFERENCE IN HOW MY
HORSES LOOK AND
PERFORM WITH PRIME
PERFORMANCE NUTRITION"

Available Now!
**Hair Analysis
TEST**



PRIME PERFORMANCE

n u t r i t i o n



www.primeperformancenutrition.com



THE BRAND OF THE FREE

Wrangler®
LONG LIVE COWGIRLS™

PRIME[®]

Metal Buildings & Components

ENHANCE THE EQUESTRIAN EXPERIENCE

254.445.4462 | PRIMEBLDG.COM



Your source for pre-engineered metal buildings & metal building components.

MADE IN THE USA

PtHA[®]



CORPORATE PARTNERS

DIAMOND SPUR



TULSA
CONVENTION &
VISITORS BUREAU

GOLD SPUR



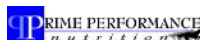
SILVER SPUR



KELLY HERD
FINE JEWELRY SINCE 1983



BRONZE SPUR



STEEL SPUR

