

Product Highlights

PoE, plus 25/100G

720XP-48ZC2

- 40 x mGig (100M - 2.5Gb) RJ45 @ 30W
- 8 x mGig (100M - 5Gb) RJ45 @ 60W
- Uplinks: 4x 25G, 2x 100G

720XP-24ZY4

- 16 x mGig (100M - 2.5Gb) RJ45 @ 30W
- 8x mGig (100M - 5Gb) RJ45 @ 60W
- Uplinks: 4x 25G

720XP-48Y6

- 48 x 10M-1GbE RJ45 @ 30W
- Uplinks: 6x 25G

720XP-24Y6

- 24x 10M-1GbE RJ45 @ 30W
- Uplinks: 6x 25G

Segmentation and overlay

- 4096 802.1Q VLANs
- V4/6 VRFs
- 16.7 Million VXLAN networks
- EVPN L2/3 (type 2/5)

Traffic and Flow Monitoring

- Hardware accelerated monitoring
- In band network telemetry
- sFlow and IPFIX
- FlowTracker to inventory devices and monitor conversations

Cognitive Campus Resilience

- N+1 redundant power/cooling
- Active/Active MLAG aggregation
- Dynamic uplink load balancing
- ISSU for software upgrades and hitless patching

Arista EOS

- Single binary image
- Fine-grained truly modular network OS
- Stateful Fault Containment (SFC)
- Stateful Fault Repair (SFR)
- Full access to Linux shell and tools
- Extensible platform - bash, python, C++ , GO, OpenConfig

Overview

The Arista Cognitive Campus 720XP series switches deliver connectivity and power for all campus user workloads, under the management and monitoring of Arista Cognitive Campus Services. The suite of platforms offer a variety of connection options for user desktops, PoE appliances and IoT devices. Managed 802.3af-t/bt power services deliver up to 60W, with speed options ranging from 10Mbps to 5Gbps over UTP. Modular SFP and QSFP uplinks support speeds from 1Gbps to 100Gbps delivering network design flexibility and scalability. Arista's common binary EOS provides a comprehensive, standards based, layer 2 and 3 feature set that includes EVPN virtualization and QoS services. Arista EOS supports standards based 802.1X access control, and LLDP device identification services to automate admission and segmentation of users, appliances, and applications in the campus. Together, Arista's family of switching and WiFi platforms are managed through a single Cognitive Campus management plane in CloudVision, providing sub-second real time telemetry, database archival and automated analytics to manage and monitor the infrastructure, users and applications in the Campus Cloud Network.

Cognitive Campus

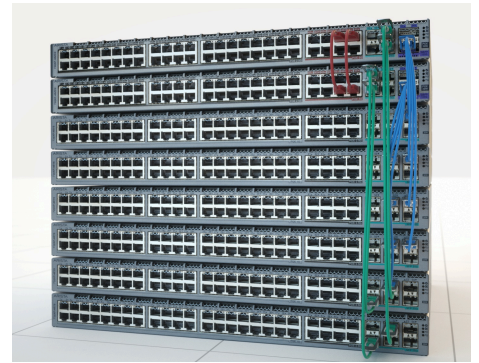
Arista's Cognitive Campus platforms' hardware based telemetry allows the EOS Cognitive Management Plane to deliver real time updates for all device state, performance statistics, and application flows, without burdening other system functions. With Arista's Cognitive Campus architecture, administrators can track in real time, application flows, talkers, listeners and device conversations. CloudVision analytics uses real time telemetry to baseline traffic flows and alert administrators of performance or security outliers. Flow telemetry is exportable through standard sFlow and IPFIX protocols, while other statistics are available through SNMP or GRPC/GNMI APIs. As with all Arista platforms, EOS ZTP provides support for auto provisioning by way of Arista CloudVision, or popular DevOps toolsets.

Cognitive Segmentation

The 720XP supports industry standard 802.1X authentication schemes and interoperates with leading authentication solutions. Authorized users and devices can be automatically connected into assigned 802.1Q or EVPN VXLAN segmented networks facilitating infrastructure and data security. WiFi VXLAN tunnels can be terminated on any 720XP platform. Additionally, the 720XP series scans and inventories all devices connecting to it, noting device and operating systems specifics so administrators have a comprehensive inventory of networking devices and applications used in the campus.

Data Center Reliability in the Campus

As with all Arista data center, routing and cloud platforms, the 720XP series switches use the same EOS binary running in thousands of production networks. Modular reliability, self-healing and high availability services like ECMP, L3 maintenance mode, and MLAG-ISSU, ensures reliability and reduces software lifecycle costs. To facilitate wiring closet port expansion, active/active MLAG, combined with hardware based dynamic load balancing lets administrators maintain and add switches to the MLAG stack without service interruption.



The 720XP series switches deliver enhanced hardware reliability and maintainability in a compact and power efficient 1U form factor. Resilient N+1 redundant, hot swappable fans and power supplies deliver data center class reliability for the campus. These switches utilize state of the art, system on chip packet processors which reduce component count, and eliminates internal oversubscription and uplink contention, The 720XP series delivers a new level of reliability and performance, providing long term, trouble free campus networking services with minimal environmental footprint.

Cognitive PoE for Mission Critical Services

Flexible power options, smart power budgeting and power prioritization allow the 720XP series switches to support critical campus services like security and emergency communications. Power supply options allow administrators to customize power allocation to mission critical services. The 720XP provides redundancy where highest availability is key or additional power is required for intensive utilization. Power delivery prioritization lets administrators mix critical and non-critical services on the same switch so in the event of a power supply failure, the switch automatically de-energizes non-critical ports to preserve mission critical devices. PoE service can also be maintained during software updates thus avoiding service interruption. With cognitive campus monitoring, power configuration and utilization are tracked in real time and archived, so administrators can accurately monitor and report service levels and infrastructure power demands.

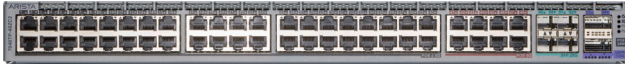
Features

Feature/Model	720XP-48ZC2	720XP-24ZY4	720XP-48Y6	720XP-24Y6
Ports	48 RJ45 4 25G SFP 2 100G QSFP	24 RJ45 4 25G SFP	48 RJ45 6 25G SFP	24 RJ45 6 25G SFP
10M-1G UTP (30W) ¹	N/A	N/A	48	24
100M-2.5G UTP (30W) ¹	40	16	N/A	N/A
100M-5G UTP (60W) ²	8	8	N/A	N/A
N+1 PoE Power budget (W)	800	500	800	500
25G SFP	4	4	6	6
100G QSFP	2	N/A	N/A	N/A
Throughput	560Gbps	180Gbps	198Gbps	174Gbps
Packets/Second	655Mpps	268Mpps	295Mpps	259Mpps
Latency (RJ-45)	1.2μs			
CPU	Dual Core-x86			
System Memory	4GB			
System Flash	4GB			
Packet Buffer	6MB			
USB Ports	1			
Console Ports	1			
100M/1G Management port	1			
Airflow	Front-Rear (Port Side - Power)			
Power (typical, excluding PoE)	175W	140W	175W	150W
Size (WxHxD)	1U (17.3" x 1.75" x 12.5") - (48.3 x 4.4 x 31.75 cm)			
Weight (2PS)	15.6Lb/7Kg	13.6Lb/6.2Kg	15.3Lb/6.9Kg	13.3Lb/6Kg
Fans: 3 (N+1 redundant)	FAN-7000-F			
Power Supply 650W 1050W	PWR-1021-AC-RED	PWR-621-AC-RED	PWR-1021-AC-RED	PWR-621-AC-RED
License Group	LIC-FIX-MG-xxx			
Minimum EOS	4.21	4.21	4.22 (FX)	4.22 (FX)

Arista 720XP-48ZC2

Provides:

- 40 x mGig (100M - 2.5GbE) RJ45 @ 30W
- 8 x mGig (100M - 5GbE) RJ45 @ 60W
- Uplinks: 4 x 25G, 2 x 100G
- 560Gbps switching bandwidth



Arista 720XP-48Y6

Provides:

- 48 x 10M - 1GbE RJ45 @ 30W
- Uplinks: 6 x 25G
- 198Gbps switching bandwidth



Arista 720XP-24ZY4

Provides:

- 16 x mGig (100M - 2.5GbE) RJ45 @ 30W
- 8 x mGig (100M - 5GbE) RJ45 @ 60W
- Uplinks: 4 x 25G
- 180Gbps switching bandwidth



Arista 720XP-24Y6

Provides:

- 24 x 10M - 1GbE RJ45 @ 30W
- Uplinks: 6 x 25G
- 174Gbps switching bandwidth



PWR-651/1021-AC-RED



FAN-7000-F

Campus Overlay Scale

The 720XP series switches utilizes data center class virtualization features to provide hundreds of segmented networks to thousands of users and devices. In addition to 4K, 802.1Q VLANs, the 720XP delivers 16.7 million VXLAN overlay networks with CVX and EVPN control plane support. The combination of virtualization scale plus the layer 2 and 3 hardware scale of the 720XP series ensures administrators can implement large segmented and secure campus networks with the ability to scale in the future.

Scaling Capabilities

Specifications	All Platforms
MAC Addresses	16K
IGMP Groups	4K
IPv4 Host Routes	16K
IPv4 Multicast Groups	8K
L3 Unified Forwarding Table Entries	96K
IPv4 LPM Routes (Ded + UFT)	Up to 128K
IPv6 LPM Routes (Ded + UFT)	Up to 80K / 64 Up to 32K / 128
ACL Entries (Ingress/Egress)	9K / 1K

Layer 2 Features

- 802.1w Rapid Spanning Tree
- 802.1s Multiple Spanning Tree Protocol
- Rapid Per Vlan Spanning Tree (RPVST+)
- 4096 VLANs
- Q-in-Q
- 802.3ad Link Aggregation/LACP
 - 64 Ports / Channel
 - 224 groups per system
- MLAG (Multi-Chassis Link Aggregation)
 - Uses IEEE 802.3ad LACP
 - 128 ports per MLAG
- 802.1Q VLANs/Trunking
- 802.1AB Link Layer Discovery Protocol
- 802.3x Flow Control
- Jumbo Frames (9216 Bytes)
- IGMP v1/v2/v3 snooping
- Storm Control
- 802.1 AVB*
- SMPTE-2059-2*
- VXLAN Tunnel Virtual Port Termination: 4K

Layer 3 Features

- Routing Protocols: OSPF, OSPFv3, BGP, MP-BGP, IS-IS, and RIPv2
- 64-way Equal Cost Multi-path Routing (ECMP)
- Resilient ECMP Routes
- VRF
- BFD
- Route Maps
- IGMP v2/v3
- PIM-SM / PIM-SSM / PIM-BIDIR*
- Anycast RP (RFC 4610)
- VRRP
- Virtual ARP (VARP)
- Policy Based Routing
- uRPF
- GRE IP Decap
- Selective Route Download

Advanced Monitoring and Provisioning

- Latency Analyzer and Microburst Detection (LANZ)
- Configurable Congestion Notification (CLI, Syslog) *
- Streaming Events (GPB Encoded) *
- Capture/Mirror of congested traffic *
- Zero Touch Provisioning (ZTP)
- Integrated packet capture/analysis with TCPDump
- Advanced Mirroring - Port Mirroring (16 sessions)
 - Enhanced Remote Port Mirroring
 - Port Mirroring (4 active sessions)
 - L2/3/4 Filtering on Mirror Sessions
- Advanced Event Management suite (AEM)
 - CLI Scheduler
 - Event Manager
 - Event Monitor
 - Linux tools
- BroadScan features
- RFC 3176 sFlow
- IPFIX support
- Restore & configure from USB
- Software Defined Networking (SDN)
 - Openflow 1.0*
 - Openflow 1.3*
 - Arista DirectFlow
 - eAPI
 - OpenStack Neutron Support
- IEEE 1588 PTP* (Transparent Clock and Boundary Clock)

Virtualization Support

- VXLAN Routing and Bridging
 - EOS CVX control plane
 - EVPN type 2 and type 5

Security Features

- PDP
- Service ACLs
- Control Plane Protection (CPP)
- Ingress / Egress ACLs using L2, L3, L4 fields
- Ingress / Egress ACL Logging and Counters
- MAC ACLs
- 802.1X Enhancements
 - Multi-Host 802.1X AUTH
 - MAC-Based AUTH (MAB)
 - Dynamic VLAN assignment
 - Named VLAN support
- ACL Deny Logging
- ACL Counters
- Atomic ACL Hitless restart
- DHCP Relay
- MAC access list security
- TACACS+
- RADIUS
- ARP trapping and rate limiting

Quality of Service (QoS) Features

- Up to 8 queues per port
- 802.1p based classification
- DSCP based classification and remarking
- Explicit Congestion Notification (ECN)
- QoS interface trust (COS / DSCP)
- Strict priority queueing
- Weighted Round Robin (WRR) Scheduling
- Per-Priority Flow Control (PFC)
- ACL based DSCP Marking
- ACL based Policing
- Policing/Shaping
- Rate limiting
- Audio Video Bridging (AVB)

PoE Capabilities

- LLDP Enhancements for PoE
- PoE Controls
- VLAN for VoIP, QoS

Network Management

- CloudVision
- Configuration rollback and commit
- 100/1000 Management Port
- RS-232 Serial Console Port
- USB Port
- SNMP v1, v2, v3
- Management over IPv6
- Telnet and SSHv2
- Syslog
- AAA
- Industry Standard CLI
- Beacon LED for system identification
- System Logging
- Environment monitoring
- MLAG ISSU
- Maintenance mode

Extensibility

- Linux Tools
 - Bash shell access and scripting
 - RPM support
 - Custom kernel modules
- Programmatic access to system state
 - Python
 - C++
 - Go
- Native KVM/QEMU support

Standard Compliance

- 802.1D Bridging and Spanning Tree
- 802.1p QOS/COS
- 802.1Q VLAN Tagging
- 802.1w Rapid Spanning Tree
- 802.1s Multiple Spanning Tree Protocol
- 802.1AB Link Layer Discovery Protocol
- 802.3ad Link Aggregation with LACP
- 802.3az Energy Efficient Ethernet (EEE)*
- 802.3x Flow Control
- 802.3u 100BASE-TX
- 802.3ab 1000BASE-T
- 802.3z 1000BASE-X
- 802.3ae 10 Gigabit Ethernet
- 802.3af/t 15/30W Power over Ethernet (PoE)
- 802.3bt 60W over over Ethernet (PoE)
- 802.3by 25 Gigabit Ethernet
- 802.3ba 40 Gigabit Ethernet
- 802.3ba 100 Gigabit Ethernet
- RFC 2460 Internet Protocol, Version 6 (IPv6) Specification
- RFC 2461 Neighbor Discovery for IP Version 6 (IPv6)
- RFC 2462 IPv6 Stateless Address Auto-configuration
- RFC 2463 Internet Control Message Protocol (ICMPv6) for the Internet Protocol Version 6 (IPv6) Specification
- IEEE 1588-2008 Precision Time Protocol

SNMP

- RFC 3635 EtherLike-MIB
- RFC 3418 SNMPv2-MIB
- RFC 2863 IF-MIB
- RFC 2864 IF-INVERTED-STACK-MIB
- RFC 2096 IP-FORWARD-MIB
- RFC 4363 Q-BRIDGE-MIB
- RFC 4188 BRIDGE-MIB
- RFC 2013 UDP-MIB
- RFC 2012 TCP-MIB
- RFC 2011 IP-MIB
- RFC 2790 HOST-RESOURCES-MIB
- RFC 3636 MAU-MIB
- RMON-MIB
- RMON2-MIB
- HC-RMON-MIB
- LLDP-MIB
- LLDP-EXT-DOT1-MIB
- LLDP-EXT-DOT3-MIB
- ENTITY-MIB
- ENTITY-SENSOR-MIB
- ENTITY-STATE-MIB
- ARISTA-ACL-MIB
- ARISTA-QUEUE-MIB
- RFC 4273 BGP4-MIB
- RFC 4750 OSPF-MIB
- ARISTA-CONFIG-MAN-MIB
- ARISTA-REDUNDANCY-MIB
- RFC 2787 VRRPv2MIB
- MSDP-MIB
- PIM-MIB
- IGMP-MIB
- IPMROUTE-STD-MIB
- SNMP Authentication Failure trap
- ENTITY-SENSOR-MIB support for DOM (Digital Optical

See EOS release notes for Supported MIBs

*Not currently supported in EOS

Supported Optics and Cables

Interface Type	40/100G QSFP Ports
10GBASE-CR	0.5m-5m QSFP+ to 4x SFP+
40GBASE-CR4	0.5m to 5m QSFP+ to QSFP+
40GBASE-AOC	3m to 100m
40GBASE-UNIV	150m (OM3) /150m (OM4) /500m (SM)
40GBASE-SRBD	100m (OM3) /150m (OM4)
40GBASE-SR4	100m (OM3) /150m (OM4)
40GBASE-XSR4	300m (OM3) /400m (OM4)
40GBASE-PLRL4	1km (1km 4x10G LR/LRL)
40GBASE-LRL4	1km
40GBASE-PLR4	10km (10km 4x10G LR/LRL)
40GBASE-LR4	10km
40GBASE-ER4	40km
100G	100G
100GBASE-SR4	70m OM3 / 100m OM4 Parallel MMF
100GBASE-SWDM4	70m OM3 / 100m OM4 Duplex MMF
100GBASE-SRBD	70m OM3 / 100m OM4 Duplex MMF
100GBASE-LR4	10km SM Duplex
100GBASE-LRL4	2km SM Duplex
100GBASE-CWDM4	2km SM Duplex
100GBASE-PSM4	500m SM Parallel
100GBASE-AOC	1m to 30m
100GBASE-ERL4	40km SM Duplex
100GBASE-CR4	QSFP to QSFP: 1m to 5m

10G	10G
10GBASE-CR	SFP+ to SFP+: 0.5m-5m
10GBASE-AOC	SFP+ to SFP+: 3m-30m
10GBASE-SRL	100m
10GBASE-SR	300m
10GBASE-LRL	1km
10GBASE-LR	10km
10GBASE-ER	40km
10GBASE-ZR	80km
10GBASE-DWDM	80km
100Mb TX, 1GbE SX/LX/TX	Yes
25G	25G
25GBASE-CR	QSFP to SFP+: 1m-3m lengths
25GBASE-AOC	SFP+ to SFP+: 3m-30m
25G-MR-SR (10/25G Multi)	70m
25GBASE-SR	70m
25G-MR-LR (10/25G Multi)	10km
25GBASE-LR	10km

Environmental Characteristics

Operating Temperature	0 to 40C (32 to 104F)
Storage Temperature	-40 to 70C (-40 to 158F)
Relative Humidity	5 to 95%
Operating Altitude	0 to 10,000 ft, (0-3,000m)

Emissions and Safety Compliance

EMC Emissions	FCC, EN55022, EN61000-3-2, EN61000-3-3 or EN61000-3-11, EN61000-3-12 (as applicable)
Immunity	EN55024 Emissions and Immunity: EN300 386
Safety	UL/CSA 60950-1, EN 60950-1, IEC 60950-1 CB Scheme with all country differences
Certifications	North America (NRTL) European Union (EU) BSMI (Taiwan) C-Tick (Australia) CCC (PRC) MSIP (Korea) EAC (Customs Union) VCCI (Japan)
European Union Directives	2006/95/EC Low Voltage Directive 2004/108/EC EMC Directive 2011/65/EU RoHS Directive 2012/19/EU WEEE Directive

Power Supply Specifications

Power Supply	PWR-650AC-F	PWR-1050AC-F
Input Voltage	100-270AC	
Typical Input Current	TBD	TBD
Input Frequency	50-60Hz	
Input Connector	IEC-320-C16	
Efficiency	80+ Platinum	

Product Number	Product Description
CCS-720XP-48ZC2-F	Arista 720XP, 40 x 100M-2.5G PoE, 8 x 100M-5G PoE, 4 x 25G SFP, 2 x 100G QSFP switch, front to rear air, 1 X 1050W AC Requires ordering one power cord (\$0)
CCS-720XP-24ZY4-F	Arista 720XP, 16 x 100M-2.5G PoE, 8 x 100M-5G PoE, 4 x 25G SFP switch, front to rear air, 1 X 650W AC Requires ordering one power cord (\$0)
CCS-720XP-48Y6-F	Arista 720XP, 48 x 10/100M-1G PoE, 6 x 25G SFP switch, front to rear air, 1 X 1050W AC Requires ordering one power cord (\$0)
CCS-720XP-24Y6-F	Arista 720XP, 24 x 10/100M-1G PoE, 6 x 25G SFP switch, front to rear air, 1 X 650W AC Requires ordering one power cord (\$0)
CCS-720XP-48ZC2-F-NA	Arista 720XP, 40 x 100M-2.5G, 8 x 100M-5G PoE, 4 x 25G SFP, 2 x 100G QSFP switch, front to rear air, AC, NA Power Cord
CCS-720XP-24ZY4-F-NA	Arista 720XP, 16 x 100M-2.5G, 8 x 100M-5G PoE, 4 x 25G SFP switch, front to rear air, AC, NA Power Cord
CCS-720XP-48Y6-F-NA	Arista 720XP, 48 x 10/100M-1G, 6 x 25G SFP switch, front to rear air, AC, NA Power Cord
CCS-720XP-24Y6-F-NA	Arista 720XP, 24 x 10/100M-1G PoE, 6 x 25G SFP switch, front to rear air, 1 X 650W AC NA Power Cord
CCS-720XP-48ZC2-F-UK	Arista 720XP, 40 x 100M - 2.5G, 8 x 100M-5G PoE, 4 x 25G SFP, 2 x 100G QSFP switch, front to rear air, AC, UK Power Cord
CCS-720XP-24ZY4-F-UK	Arista 720XP, 16 x 2.5G, 8 x 100M-5G PoE, 4 x 25G SFP switch, front to rear air, AC, UK Power Cord
CCS-720XP-48Y6-F-UK	Arista 720XP, 48 x 10/100M-1G, 6 x 25G SFP switch, front to rear air, AC, UK Power Cord
CCS-720XP-24Y6-F-UK	Arista 720XP, 24 x 10/100M-1G PoE, 6 x 25G SFP switch, front to rear air, 1 X 650W AC UK Power Cord
CCS-720XP-48ZC2-F-EU	Arista 720XP, 40 x 100M-2.5G, 8 x 100M-5G PoE, 4 x 25G SFP, 2 x 100G QSFP switch, front to rear air, AC, EU Power Cord
CCS-720XP-24ZY4-F-EU	Arista 720XP, 16 x 100M-2.5G, 8 x 100M-5G PoE, 4 x 25G SFP switch, front to rear air, AC, EU Power Cord
CCS-720XP-48Y6-F-EU	Arista 720XP, 48 x 10/100M-1G, 6 x 25G SFP switch, front to rear air, AC, EU Power Cord
CCS-720XP-24Y6-F-UK	Arista 720XP, 24 x 10/100M-1G PoE, 6 x 25G SFP switch, front to rear air, 1 X 650W AC EU Power Cord
CCS-720XP-48ZC2-F-C14	Arista 720XP, 40 x 100M-2.5G, 8 x 100M-5G PoE, 4 x 25G SFP, 2 x 100G QSFP switch, front to rear air, AC, C14 Power Cord
CCS-720XP-24ZY4-F-C14	Arista 720XP, 16 x 100M-2.5G, 8 x 100M-5G PoE, 4x25G SFP switch, front to rear air, AC, C14 Power Cord
CCS-720XP-48Y6-F-C14	Arista 720XP, 48 x 10/100M-1G, 6 x 25G SFP switch, front to rear air, AC, C14 Power Cord
CCS-720XP-24Y6-F-C14	Arista 720XP, 24 x 10/100M-1G PoE, 6 x 25G SFP switch, front to rear air, 1 X 650W AC C14 Power Cord
CCS-720XP-48ZC2-F-JPN	Arista 720XP, 40 x 100M-2.5G, 8 x 100M-5G PoE, 4 x 25G SFP, 2 x 100G QSFP switch, front to rear air, AC, JPN Power Cord
CCS-720XP-24ZY4-F-JPN	Arista 720XP, 16 x 100M-2.5G, 8 x 100M-5G PoE, 4 x 25G SFP switch, front to rear air, AC, JPN Power Cord
CCS-720XP-48Y6-F-JPN	Arista 720XP, 48 x 10/100M-1G, 6 x 25G SFP switch, front to rear air, AC, JPN Power Cord
CCS-720XP-24Y6-F-JPN	Arista 720XP, 24 x 10/100M-1G PoE, 6 x 25G SFP switch, front to rear air, 1 X 650W AC JPN Power Cord
LIC-FIX-MG-E	Enhanced License for Arista Fixed 1G/mG Ethernet Switches (OSPF, BGP, ISIS, PIM, VXLAN)
LIC-FIX-MG-FLX-L	FLX-Lite License for Arista Fixed 1G/mG Ethernet Switches - Full Routing Up to 32K Routes, EVPN, VXLAN

Product Number	Product Description
PWR-621-AC-RED	Spare 650 Watt AC power supply for Arista 720XP 1RU Switches (front-to-rear airflow)
PWR-1021-AC-RED	Spare 1050 Watt AC power supply for Arista 720XP 1RU Switches (front-to-rear airflow)
FAN-7000-F	Spare fan module for Arista 720XP, 7150, 7124SX(FX), 7050, 7280 & 7048-A switches (front-to-rear airflow)
KIT-CCS-720	Spare accessory kit for Arista 720XP Series switches
CCS-720-PCVR	Spare Blank Cover for 720 Series Power Supply Slot
CAB-C15-AUS	Power Cord, Australia,C15 to AS/NZS 3112, 8 Feet (2.5m)
CAB-C15-C14-INTL	Power Cord C15 to C14 (2m)
CAB-C15-EU	Power Cord, Europe,C15 to CEE 7/7, 8 Feet (2.5m)
CAB-C15-IT	Power Cord, Italy,C15 to CEI 23-16, 8 Feet (2.5m)
CAB-C15-UK	Power Cord, United Kingdom,C15 to BS 1363/A, 8 Feet (2.5m)
CAB-C15-US	Power Cord, North America,C15 to NEMA 5-15P, 8 Feet (2.5m)
CAB-C15-AUS	Power Cord, Australia,C15 to AS/NZS 3112, 8 Feet (2.5m)

Warranty

The Arista 720XP switches come with a one-year limited hardware warranty, which covers parts, repair, or replacement with a 10 business day turnaround after the unit is received.

Service and Support

Support services including next business day and 4-hour advance hardware replacement are available. For service depot locations, please see: <http://www.arista.com/en/service>

Headquarters

5453 Great America Parkway
Santa Clara, California 95054
408-547-5500

Support

support@arista.com
408-547-5502
866-476-0000

Sales

sales@arista.com
408-547-5501
866-497-0000